
MEETING NOTICE

The Parks and Recreation Board of the City of Woodcreek, Texas will conduct a meeting at Camp Young Judaea, 121 Camp Young Judaea Rd., Woodcreek, TX, in order to advance the public health goal of "social distancing" to slow the spread of COVID-19. The meeting will be held on July 8, 2021 at 11:00 AM.

Note: Smoking is not allowed anywhere on the property of Camp Young Judaea.

The meeting will have the following guidelines:

- Face coverings will be required to be worn by all attendees when a minimum of six-foot social distancing cannot be maintained.

The public may watch this meeting live at the following link: <https://meetings.ipvideotalk.com/197572649>. The public may listen to this meeting by dialing one of the following numbers: 1(617) 315-8088 or toll free at 1(866) 948-0772. When prompted enter Meeting ID: 197572649. Submit written comments by email to woodcreek@woodcreektx.gov by noon on the day prior to the meeting. Please include your full name, home or work address, and agenda item number. Written comments will be part of the official written record only. A recording of the meeting will be made and will be available to the public in accordance with the Texas Public Information Act upon written request.

This notice, as amended, is posted pursuant to the Texas Open Meetings Act (Vernon's Texas Codes Ann. Gov. Code Chapter 551).

AGENDA

CALL TO ORDER

PLEDGES

ROLL CALL

PUBLIC COMMENTS

Interested persons are required to sign up with the presiding officer or designee before the meeting begins and shall indicate the topic about which they wish to speak and whether they wish to speak on the item at the beginning of the meeting or during the meeting when the agenda item is being considered by the City Council. Speakers shall refrain from comments regarding the City's staff, elected officials, or council appointed committee membership which are prohibited by law. Delegations of more than five persons shall appoint one person to present their views before the City Council. The City Council may not discuss or comment about an item not included on the agenda, except that the Council may (1) make a statement of fact regarding the item; (2) make a statement concerning the policy regarding the item; or (3) propose that the item be placed on a future agenda. Comments will be limited to three (3) minutes per speaker.

CONSENT AGENDA

1. Approval of Parks and Rec Meeting Minutes from May 12, 2021.

REGULAR AGENDA

2. Discussion and Take Appropriate Action on Improvements to City-owned Property on the South Side of the Entrance to the City on Woodcreek Drive (R48798)
3. Discussion and Take Appropriate Action on Improvements to the Area Known as the "Triangle" at the Intersection of Woodcreek Drive and Brookhollow Drive
4. Discussion and Take Appropriate Action on Improvements to Augusta Park
5. Discussion and Take Appropriate Action on Improvements to City-owned Property on Brookhollow Drive (R49178)
6. Discussion and Take Appropriate Action on Parks & Open Space Advisory Committee (POSAC) Grant Information and Hays County Project Information Form
7. Discussion of Future Recreation Events

ADJOURN

Executive sessions held during this meeting will generally take place in the City Manager's office, at the discretion of the Parks and Recreation Board.

The Parks and Recreation Board may retire to executive session any time between the meeting's opening and adjournment for the purpose of consultation with legal counsel pursuant to Chapter 551.071 of the Texas Government Code; discussion of personnel matters pursuant to Chapter 551.074 of the Texas Government Code; deliberation regarding real property pursuant to Chapter 551.072 of the Texas Government Code; deliberation regarding economic development negotiations pursuant to Chapter 551.087 of the Texas Government Code; and/or deliberation regarding the deployment, or specific occasions for implementation of security personnel or devices pursuant to Chapter 551.076 of the Texas Government Code. Action, if any, will be taken in open session.

This agenda has been reviewed and approved by the City's legal counsel and the presence of any subject in any Executive Session portion of the agenda constitutes a written interpretation of Texas Government Code Chapter 551 by legal counsel for the governmental body and constitutes an opinion by the attorney that the items discussed therein may be legally discussed in the closed portion of the meeting considering available opinions of a court of record and opinions of the Texas Attorney General known to the attorney. This provision has been added to this agenda with the intent to meet all elements necessary to satisfy Texas Government Code Chapter 551.144(c) and the meeting is conducted by all participants in reliance on this opinion.

Attendance by Other Elected or Appointed Officials:

It is anticipated that members of other city board, commissions and/or committees may attend the meeting in numbers that may constitute a quorum of the other city boards, commissions and/or committees. Notice is hereby given that the meeting, to the extent required by law, is also noticed as a meeting of the other boards, commissions and/or committees of the City, whose members may be in attendance. The members of the boards, commissions and/or committees may participate in discussions on the same items listed on the agenda, which occur at the meeting, but no action will be taken by such in attendance unless such item and action is specifically provided for on an agenda for that board, commission or committee subject to the Texas Open Meetings Act.

The City of Woodcreek is committed to compliance with the Americans with Disabilities Act. Reasonable modifications and equal access to communications will be provided upon request. Please call the City Secretary's Office at 512-847-9390 for information. Hearing-impaired or speech disabled persons equipped with telecommunications devices for the deaf may call 7-1-1 or may utilize the statewide Relay Texas program at 1-800-735-2988.

Pursuant to Section 30.07, Penal Code (trespass by license holder with an openly carried handgun), a person licensed under Subchapter H, Chapter 411, Government Code (handgun licensing law), may not enter this property with a handgun that is carried openly.

I certify that the above notice was posted on the **2nd day of JULY 2021 at 4:05 PM.**

By: 
Brenton B. Lewis, City Manager

**SPECIAL PARKS AND RECREATION BOARD MEETING (CYJ)
May 12, 2021; 10:00 AM
Woodcreek, Texas**

MINUTES

CALL TO ORDER

Chairperson Rawlings called the meeting to order at 10:02AM.

PLEDGES

ROLL CALL

PRESENT

Chairperson Pat Rawlings
Vice-Chairperson Karen Poe
Board Member Cody Abney
Board Member Ruth Ann Gilbert
Board Member Jane Little

Ex Officio Members: Present - City Manager Brenton B. Lewis
Absent – Mayor Gloria Whitehead
City Attorney Kent Wymore

STAFF PRESENT

Administrative Assistant Maureen Mele

PUBLIC COMMENTS

Public comments were offered by: Sheri Lin Lamoureux and Ray Don Tilley.

CONSENT AGENDA

1. Approval of Parks & Rec Board Meeting Minutes from April 7, 2021

A motion was made by Vice-Chairperson Poe to approve the minutes from the April 7, 2021 meeting. This motion was seconded by Board Member Abney.

Voting Yea: Chairperson Rawlings, Vice-Chairperson Poe, Board Member Abney, Board Member Gilbert, Board Member Little

The motion carried with a 5-0-0 vote.

REGULAR AGENDA

2. Discussion and Take Appropriate Action on Improvements to City-owned Property on Brookhollow Drive (R49178)

Board Member Gilbert made a motion to recommend to the City Council that the Brookhollow Dr. property be cleared of dead tree limbs, branches and large rocks. This was seconded by Board Member Abney.

After discussion, a roll call vote was held.

Voting Yea: Chairperson Rawlings, Vice-Chairperson Poe, Board Member Abney, Board Member Gilbert, Board Member Little

The motion carried with a 5-0-0 vote.

A motion was made by Board Member Gilbert to recommend to the City Council that a comprehensive survey of the property be commissioned. This was seconded by Board Member Abney.

After discussion, a roll call vote was held.

Voting Yea: Chairperson Rawlings, Vice-Chairperson Poe, Board Member Abney, Board Member Gilbert, Board Member Little

The motion carried with a 5-0-0 vote.

A motion was made by Board Member Gilbert to recommend to City Council that the property be designated as a city park. This was seconded by Board Member Abney.

After discussion, a roll call vote was held.

Voting Yea: Chairperson Rawlings, Vice-Chairperson Poe, Board Member Abney, Board Member Gilbert, Board Member Little

The motion carried with a 5-0-0 vote.

3. Discussion and Take Appropriate Action about Improvements to the Area Known as the "Triangle" at the Intersection of Woodcreek Drive and Brookhollow Drive

Board Member Gilbert made a motion to recommend to City Council that the area known as the triangle have a comprehensive survey commissioned. This was seconded by Board Member Abney.

After discussion, a roll call vote was held.

Voting Yea: Chairperson Rawlings, Vice-Chairperson Poe, Board Member Abney, Board Member Gilbert, Board Member Little

The motion carried with a 5-0-0 vote.

A motion was made by Board Member Abney to recommend to the City Council that the area known as the triangle be designated as a city park. This was seconded by Chairperson Rawlings.

After discussion, a roll call vote was held.

Voting Yea: Chairperson Rawlings, Vice-Chairperson Poe, Board Member Abney, Board Member Gilbert, Board Member Little

The motion carried with a 5-0-0 vote.

A motion was made by Chairperson Rawlings to add an appropriate covered structure to this property. Motion died for lack of second.

A motion was made by Chairperson Rawlings to appoint a sub-committee of Board Member Little and Board Member Poe to look at amenities for the area known as the triangle. This was seconded by Board Member Abney.

After discussion, a roll call vote was held.

Voting Yea: Chairperson Rawlings, Vice-Chairperson Poe, Board Member Abney, Board Member Gilbert, Board Member Little

The motion carried with a 5-0-0 vote.

4. Discuss and Take Appropriate Action on Improvements to Augusta Park

Board Member Abney made a motion to recommend to City Council that Augusta Park have an updated comprehensive survey commissioned. This was seconded by Vice-Chairperson Poe.

After discussion, a roll call vote was held.

Voting Yea: Chairperson Rawlings, Vice-Chairperson Poe, Board Member Abney, Board Member Gilbert, Board Member Little

The motion carried with a 5-0-0 vote.

A motion was made by Board Member Abney to recommend to the City Council that funds be allocated to Augusta Park to refresh the Park and its equipment . This was seconded by Vice-Chairperson Poe.

After discussion, a roll call vote was held.

Voting Yea: Chairperson Rawlings, Vice-Chairperson Poe, Board Member Abney, Board Member Gilbert, Board Member Little

The motion carried with a 5-0-0 vote.

A motion was made by Board Member Abney to recommend to City Council that the bocce ball courts be restored to useable condition. This was seconded by Vice-Chairperson Poe.

After discussion, a roll call vote was held.

Voting Yea: Chairperson Rawlings, Vice-Chairperson Poe, Board Member Abney, Board Member Gilbert, Board Member Little

The motion carried with a 5-0-0 vote.

A motion was made by Board Member Abney to recommend to City Council that funding be allocated to bring Augusta Park into ADA compliance. This was seconded by Board Member Little.

After discussion, a roll call vote was held.

Voting Yea: Chairperson Rawlings, Vice-Chairperson Poe, Board Member Abney, Board Member Gilbert, Board Member Little

The motion carried with a 5-0-0 vote.

5. Discuss and Take Appropriate Action on Improvements to City-owned Property on the South Side of the Entrance to the City on Woodcreek Drive (R48798)

Board Member Little made a motion to form a two-person subcommittee of Board Member Gilbert and Board Member Little to look into improvements to this lot in terms of enhancing landscaping. This was seconded by Vice-Chairperson Poe.

After discussion, a roll call vote was held.

Voting Yea: Chairperson Rawlings, Vice-Chairperson Poe, Board Member Abney, Board Member Gilbert, Board Member Little

The motion carried with a 5-0-0 vote.

A motion was made by Board Member Abney to recommend to the City Council that the property have a comprehensive survey commissioned with easements shown. This was seconded by Chairperson Rawlings.

After discussion, a roll call vote was held.

Voting Yea: Chairperson Rawlings, Vice-Chairperson Poe, Board Member Abney, Board Member Gilbert, Board Member Little

The motion carried with a 5-0-0 vote.

A motion was made by Board Member Little to have City Staff contact Hays County to have them consider adding adult exercise equipment to the Winter's Mill hike and bike trail. This was seconded by Chairperson Rawlings.

After discussion, a roll call vote was held.

Voting Yea: Chairperson Rawlings, Vice-Chairperson Poe, Board Member Abney, Board Member Gilbert, Board Member Little

The motion carried with a 5-0-0 vote.

ADJOURN

The meeting was adjourned at 11:34AM.

Gloria Whitehead, Mayor

Linda Land, City Secretary

DRAFT

PROJECT INFORMATION FORM
 Hays County Parks & Open Space 2020
 APPROVED by POSAC on 042920

PROJECT CRITERIA

Projects submitted to Hays County should be consistent with the goals and priorities set forth in the 2012 Hays County Parks, Open Space and Natural Areas MASTER PLAN. Applicants are highly encouraged to review the Master Plan (link below) and understand how your project fits within it.

https://hayscountytexas.com/download/departments/parks_recreation/Parks-Master-Plan-April-2012.pdf

Submitter's information required by form

Email Address

Name of Project

Submitters Name

Submitter's Phone

PROJECT CRITERIA

Projects submitted to Hays County should be consistent with the goals and priorities set forth in the 2012 Hays County Parks, Open Space and Natural Areas MASTER PLAN. Applicants are highly encouraged to review the Master Plan (link below) and understand how your project fits within it.

https://hayscountytexas.com/download/departments/parks_recreation/Parks-Master-Plan-April-2012.pdf

Project Sponsor (entity or individual):

Primary Contact Name

Primary Contact Email

Primary Contact Phone

Secondary Contact (name/email/phone)

PROJECT LOCATION & DESCRIPTION

Hays County Precinct (form to include link to precinct map):

Pct 1

Pct 2

Pct 3

Pct 4

Location

In municipal jurisdiction, including ETJ

In unincorporated area of County

Please provide:

Physical address
and/or

Google Map Link
and/or

GIS Coordinates

Approximate size of project (Lineal feet, square feet or acres):

PROJECT DESCRIPTION

For reference while answering the following questions, please review the 2012 Hays County Parks, Open Space and Natural Areas MASTER PLAN at <https://bit.ly/3cZpMhG>

Description of the proposed project.

(50 words or less)

Does the project address any of the following stated "Goals" of the Hays County Parks Master Plan? Check all that apply.

Community Goal: Provide ample parks and open spaces in the park and open space system; provide a range of recreational experiences to service a variety of age groups and user-types year-round; Connect the parks and open space system where appropriate.

Environmental Goal: Utilize the parks and open space system to improve the condition of water quality and quantity; protect scenic qualities throughout the County; conserve important natural resource areas that contribute to the health and vitality of the County.

Financial Goal: Incorporate a variety of funding mechanisms and partnerships for park and open space funding; promote economic development through increased year-round tourism.

Describe how the project will contribute to each goal, in 50 words or less. (For reference pages 9-10 in the 2012 Master Plan)

Which of the following 2012 Master Plan Project Priorities are met by your project?

(CHECK ALL THAT APPLY. The following project types are listed in order of priority in the 2012 Master Plan, pages 26-27.)

- River and creek access
- Multi-use trails
- Camping
- Youth camping facilities
- General nature enjoyment lands
- Nature center
- Festivals and special event spaces
- Recreation center and sports complex
- Shooting sports complex
- Community gardens

PROJECT CATEGORY

Please choose one of the following three categories that BEST fits your project.

Urban Park, Active Recreation, Infrastructure, Special Purpose Facility
 Projects submitted under this category may include acquisition of lands and/or easements or facilities for projects less than 50 acres in size; active and passive public recreation opportunities; proposed new or renovated facilities and/or hardscapes; projects creating or enhancing equity and access for all (ADA compliance).

Open or Natural Space, Habitat Land, Water Quality/Quantity Land
 Projects submitted under this category may include acquisition of lands and/or easements or facilities for projects 50 acres or greater in size; projects protecting known threatened/endangered flora and/or fauna and their habitat; projects with critical headwaters and watershed areas, live water creeks/streams, aquifer recharge areas, and/or karst (cave) feature protection; public trail, hiking, camping, and wilderness education opportunities, and protection of historic and/or working ranch and farmlands.

Connectivity (new or expanded connections to or between protected areas, parks, or trails)
 Projects submitted under this category may include: acquisition of lands and/or easements or facilities that create or expand trails connecting to or within one or more parks or protected open space lands; trailheads; way-finding and educational kiosks; enhancement or augmentation of existing non-motorized transportation plans and trails/facilities; projects creating or enhancing equity and access for all (ADA compliance).

Please complete ONLY the checklist below that corresponds to the project category you've selected above.

If you selected Urban Park, Active Recreation, Infrastructure, Special Purpose Facility, then:

Which of the following features apply to the proposed project?
(check all that apply)

- Multipurpose regional park
- Sports complex and/or special use parks
- River or water access

- Hiking, biking and multi-use trail connectivity
- Camping
- Shooting sports
- 4H livestock and/or equestrian
- Active recreation
- Experiencing nature
- Wildlife viewing
- New or renovated park facilities
- Located in an underserved area

If you selected Open or Natural Space, Habitat Land, Water Quality/Quantity Land, then:

Which of the following features apply to the proposed project? *(check all that apply)*

- Open space
- River or water access
- Wildlife habitat conservation
- Sensitive environmental feature conservation (karst, springs, seeps, steep slopes, rim rock, wetlands)
- Conservation of intact/rare plant communities
- Restoration of habitat
- Conservation of species of concern (threatened, endangered, rare)
- Scenic vistas and viewsheds
- Cultural resource preservation
- Hiking, biking trails
- Experiencing nature
- Camping
- Conservation easement
- Ecosystem services, riparian protection, recharge protection, water quality
- Conserve water resources or protect water quality
- Contribute to preservation of a larger, regional landscape of conserved lands
- Protect lands threatened by fragmentation or development
- Protect heritage ranch and farmlands

If you selected Connectivity, then:

Which of the following features apply to this proposed project?

(check all that apply)

- Walking, running, hiking, biking trails
- Equestrian trails
- Trail and/or greenway easement
- Active recreation
- Wildlife viewing
- Riparian area protection or restoration
- River or creek access
- Wildlife corridors
- Connectivity within (or to) one or more current parks and/or protected open space lands
- Expands existing park or open space area

___ Located within an underserved area

FUNDING & PROJECT COSTS

Funds are requested for the following purpose (check all that apply):

- ___ Land acquisition
- ___ Conservation easement acquisition
- ___ Trail easement acquisition
- ___ Planning (land management, design, engineering)
- ___ Facility design and/or construction
- ___ Other

If other, please explain:

Estimated amount of funds required for project and source, if known:

\$ _____ **Hays County (amount you are requesting from Hays County; can be range)**
 \$ _____ Other Public Entity, Name: _____
 \$ _____ Philanthropic Grant/Donation, Source: _____
 \$ _____ Other (Describe below): _____

\$ _____ **TOTAL ESTIMATED PROJECT COST**

PROJECT PARTNERS & ROLES

List all anticipated project partners and the role(s) they may play in your project. Roles can include funding partners (private, foundation, grants, loans or public funds), donated lands or easements, planning and design services, management and operations support, volunteer groups, public support, or any other project partner role.

Enter Partner & Role they will play. Press enter to add a line space between partners

Parks & Open Space Advisory Commission (POSAC) Grant Information

Item 6.

Project Location	Project Description	Est. Total Cost	Grant Request Amt.(75%)	City Support Amt.(25%)
<i>Triangle</i>	Gazebo, Concrete Foundation, Benches, Bike Racks, Water Fountain, Site Prep	\$35,000.00	\$26,250.00	\$8,750.00
<i>Augusta Park</i>	ADA Observation Deck w/Climbing Nets, Concrete Ping Pong, Cornhole, ADA bocce mod (SEE NOTE 1), path, benches, bike racks	\$50,800.00	\$38,100.00	\$12,700.00
<i>Brookhollow Lot - Creekside</i>	Large, Low-Maintenance Play Structure, Swings,site prep (SEE NOTE 2), bike racks, fence, path, parking, landscaping	\$164,133.80	\$123,100.35	\$41,033.45
TOTALS		\$249,933.80	\$187,450.35	\$62,483.45

*NOTE 1--:We may be able to do a DIY Ping Pong Table for \$5K Less

* NOTE 2-This playscape is constructed of metal components that will not need maintenance like a wood structure

Quote

Quote #: 3035576 - A
Date: 6/1/21
Good Until: 6/5/21

Project Advisor

Name: Robert Imbrogno
Phone: 888-293-2339 x246
Fax: 724-444-5301
Email: Robert.Imbrogno@fifthroom.com

Customer

Ref #:
Job Name: Item 6.
PO #:

Quantity	Product & Description	Unit Price	Total
1	16' Cedar Octagon Gazebo	\$12,899.00	\$12,899.00
1	Cedar Tone Stain/Sealer - Color Confirmed	\$899.00	\$899.00
1	Crimson Red Metal Roof - Color Confirmed	\$1,629.00	\$1,629.00
1	Standard 4x4 Straight Posts	\$0.00	\$0.00
1	Top Railing Sections	\$0.00	\$0.00
1	Standard Braces	\$0.00	\$0.00
1	1 x 3 Standard Railings	\$0.00	\$0.00
1	Cupola	\$0.00	\$0.00
1	Standard Roof	\$0.00	\$0.00
1	Straight Fascia	\$0.00	\$0.00
1	Hidden Wiring w/ 1 Receptacle & Switch	\$449.00	\$449.00
3	Bench Section	\$219.00	\$657.00
1	Footprint Drawings	\$99.00	\$99.00
1	Installation on a Prepared Site by Independent Installer	\$6,329.00	\$6,329.00
1	In House CAD Drawings for site plan (no approval needed)	\$0.00	\$0.00
0	Excluded: Deck, Ceiling, Screens, Fan		



Subtotal	\$22,961.00
Government Discount 5%	(\$831.60)
Shipping	\$2,049.00
Pre-Tax Total	\$24,178.40
Sales Tax	\$0.00
TOTAL	\$24,178.40

Billing Details

Company: Parks Board for Woodcreek
Name: Marilyn Little
Address: -
City: Woodcreek
State: Texas
Zip Code: 78676
Phone: 512-847-1027
Email: jlittle612@austin.rr.com

Shipping Details

Company: Parks Board for Woodcreek
Name: Marilyn Little
Address: -
City: Woodcreek
State: Texas
Zip Code: 78676
Phone: 512-847-1027
Email: jlittle612@austin.rr.com

Payment Terms

50% down payment to start production.
Balance due prior to shipping

Notes

- *5% Government Park Discount Included
- *No Touch Delivery Included in Shipping
- *Assembly Service requires Prepped Foundation Site

Shipping Notes

Shipping As a kit
Method: MotorFreight with No Touch Delivery
Estimated shipping 16-18 Weeks after Drawing
Approval.
Estimated transit time 3-4 days.

*Spec Drawings Available = Additional \$399

*Stamped Engineered Drawings with TYPICAL
Available = Additional \$1499

Item 6.

• Fasteners: All Fasteners Included



From: Karen Poe kpoe7@icloud.com
Subject: Bid
Date: Jul 1, 2021 at 12:35:08 PM
To: Karen Poe kpoe7@icloud.com

Item 6.

Ryan Anderson Concrete- Bid for 16'x16' circular concrete slab- 5" slab with 12" x12" exterior concrete footing - 4 bars of 1/2 rebar in footing and 3/8" rebar on 16" centers for mat - light brush finish- 3,500 psi concrete - \$2,048 material and labor

Sent from my iPhone

Your Local Concrete Experts

GET DEPENDABLE CONCRETE SERVICES IN KYLE, TX

Looking for an experienced concrete contractor in the Kyle, TX area? Look no further. Ryan Anderson Concrete has over 30 years of experience pouring everything from slab foundations to patios. We can handle all of your concrete pouring, stamping and staining needs.

Call 940-210-8823 now to get a free estimate and schedule concrete driveway installation services. Our concrete contractor will be happy to answer any questions.

Just like last time, Ryan was fantastic to work with. He was responsive and fair with pricing. We ran into a few delays with weather and the coronavirus stuff going on, but he kept in close contact and had everything ready before we needed it done. If we end up doing anything else concrete-related, we will DEFINITELY be hiring him again! Thanks again, Ryan!

Ryan's work was on time and exceptional. He consistently kept me up to date on project and was upfront and honest. I highly recommend him!! His prices are reasonable!


Braunfels, TX and surrounding areas. You should make us your go-to concrete company because:

- We are locally owned and operated
- We have over 30 years of experience
- We provide residential and commercial concrete services
- We offer free consultations and estimates
- We complete projects on time, every time

Our crew can pour a sturdy foundation for your home. Contact us right away to arrange for [concrete slab foundation](#) or [concrete patio installation](#) services.

Concrete Flatwork Done Right

TURN TO RYAN ANDERSON CONCRETE FOR RELIABLE CONCRETE SERVICES



Get the Most Out of Your Backyard

ARRANGE FOR CONCRETE PATIO INSTALLATION SERVICES IN KYLE & NEW BRAUNFELS, TX

[CONTACT US >](#)



Ryan Anderson Concrete
Fulfilling All Your Concrete Needs For 25 Years.



Concrete Driveways and Sidewalks

TRUST OUR TEAM TO POUR YOUR CONCRETE DRIVEWAY, PARKING LOT OR SIDEWALK.

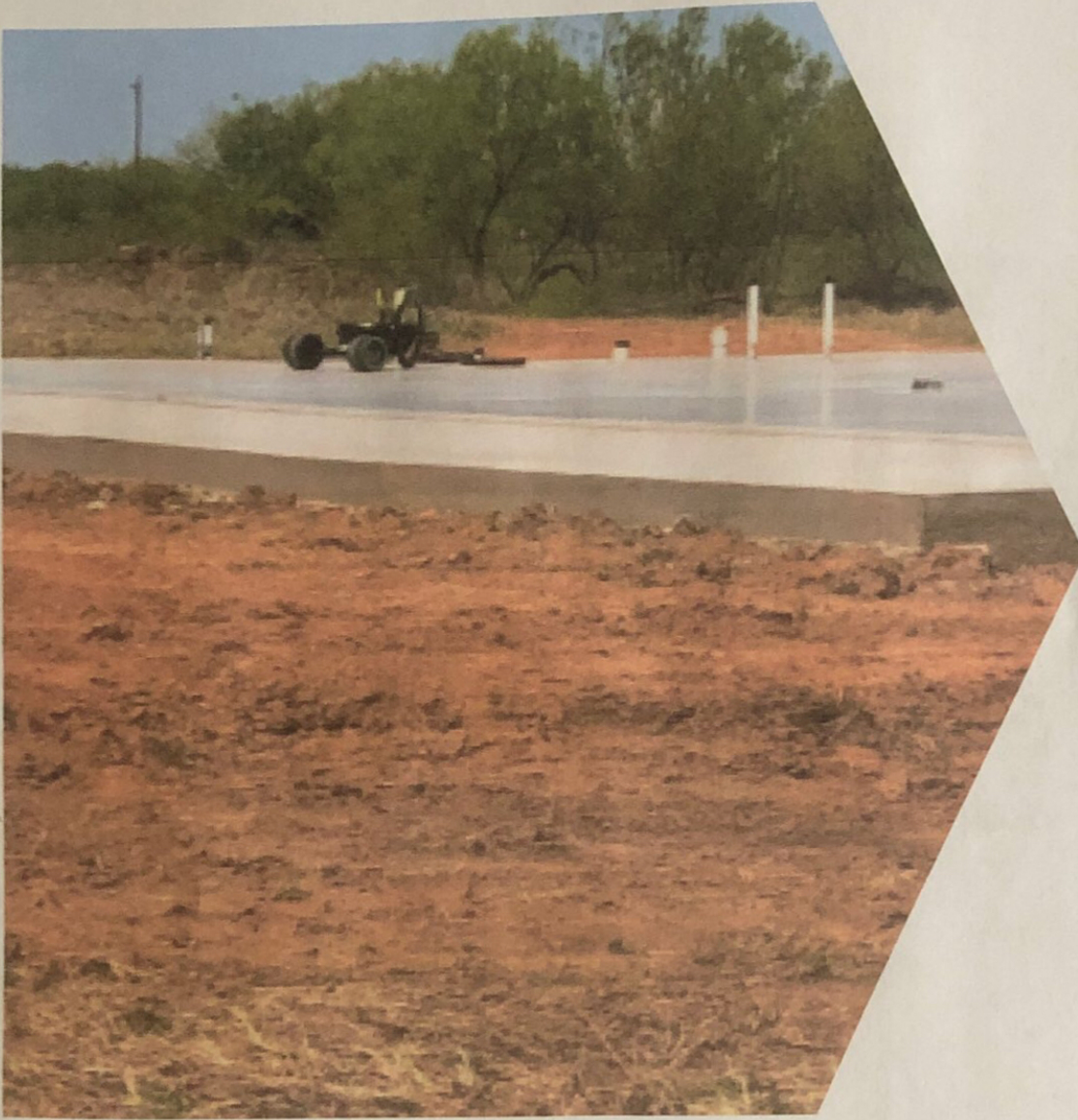
SEE WHY CUSTOMERS PREFER TO WORK WITH RYAN ANDERSON CONCRETE

Ryan Anderson Concrete offers a wide range of concrete services in Kyle & New




Concrete Patios

WE CAN INSTALL A DECORATIVE CONCRETE PATIO ON YOUR PROPERTY.



Concrete Slab Foundation

HIRE US TO COMPLETE YOUR CONCRETE SLAB FOUNDATION INSTALLATION.

 (940) 210-8823



Building a New Home?

SCHEDULE A CONCRETE SLAB FOUNDATION INSTALLATION IN KYLE & NEW BRAUNFELS, TX

[CONTACT US >](#)

Wimberley Restoration Company
 P.O. Box 281
 Wimberley, TX 78676
 (512) 648-1889
 melissa@wimberleyrestoration.com
 www.wimberleyrestoration.com

Estimate



ADDRESS
Pat Rawlings 82 Brookhollow Dr. Wimberley, TX 78676

ESTIMATE #	DATE	
2027	07/01/2021	

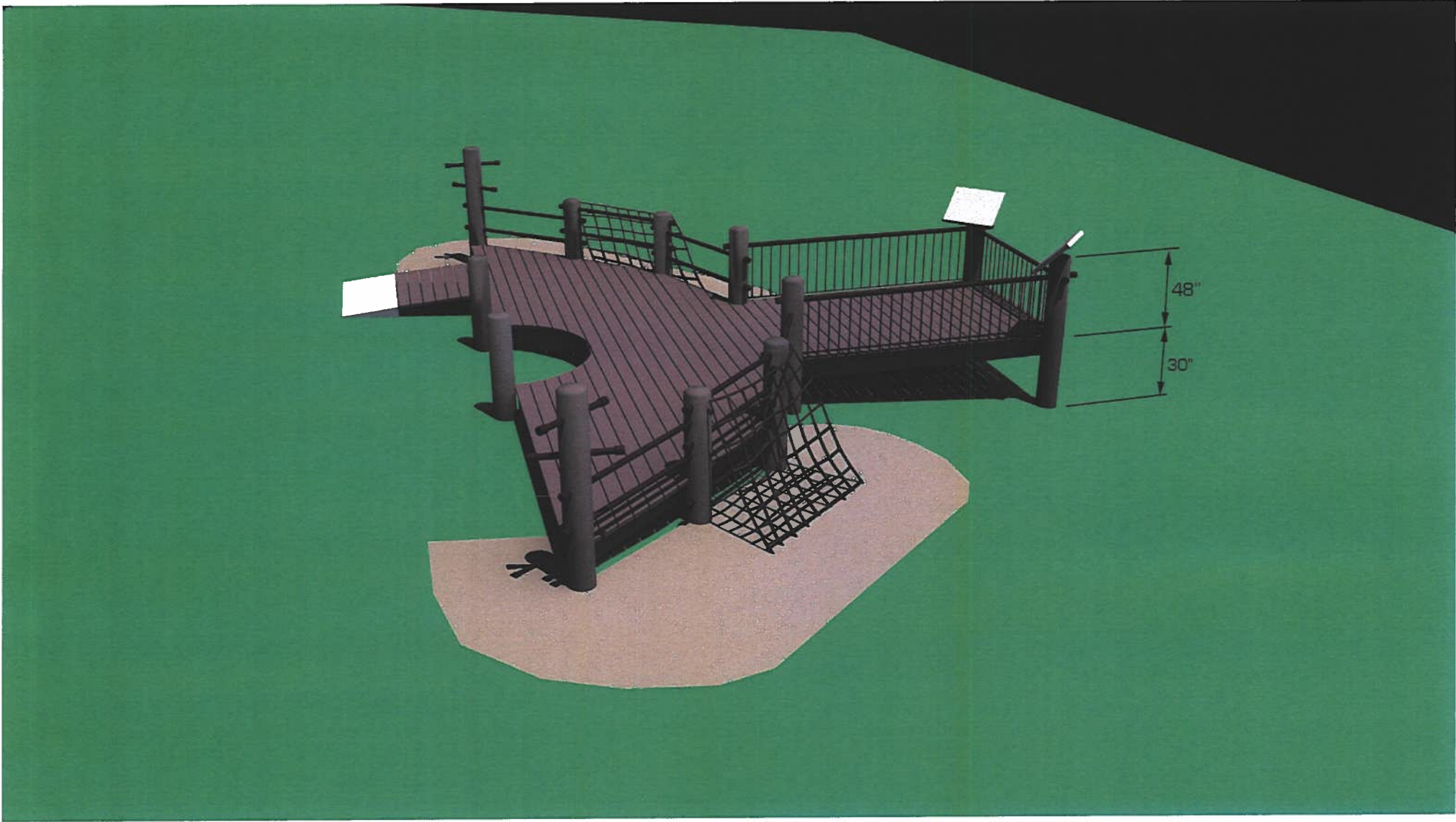
ACTIVITY	QTY	RATE	AMOUNT
Deck 20x30 horse shoe deck with ramp: Prepare grade as needed Supply and install 6" pressure treated rounds per plans Supply and install 2x8 Pressure treated sub structure Joists 12" OC Supply and install Trex "Enhanced Basics" composite decking Supply and install Galvanized terminal posts railing Signage by others Permits by others	1	35,857.50	35,857.50
TOTAL			\$35,857.50

Accepted By

Accepted Date

** 50% of project total due upon start of job & 50% due upon completion.**
 This estimate expires after 30 days from the date of generation.





Doty & Sons Concrete Products, Inc.

1275 East State Street
Sycamore, IL 60178

Phone: 800-233-3907

Fax: 815-895-8035

Quotation

Date	Quotation	Item 6.	er
6/14/2021	234737		

Name / Address
CITY OF WOODCREEK PAT RAWLINGS 82 BROOKHOLLOW DRIVE WOODCREEK, TX 78676
Customer Phone
512-983-6053

Ship To
CITY OF WOODCREEK WOODCREEK, TX 78676
Customer Fax
PAT@PATRAWLINGS.COM

Project/Job	Terms	FOB	Rep	Ship Via
		78676	JD	MOTOR FREIGHT

Item	Description	Qty	Price Each	Total
T1086035	REGULATION SIZE CONCRETE AND STEEL PING PONG / TENNIS TABLE. SIZE 108" X 60" X 30" HIGH. TOTAL WEIGHT 2615 LBS. FEATURES: 1. TWO PIECE TABLE TOP 4" THICK 2. TABLE TOP IS POLISHED WITH TWO COATS OF CONCRETE SEALER AND COVAL GRAFFITI SEALER 3. BLACK STRIPED CENTER LINE 4. STAINLESS STEEL NET 1/4" THICK WITH GUSSETED END SUPPORTS 5. STEEL I-BEAM CONSTRUCTION BASE 72" X 48" X 26" HIGH 6. STEEL FRAME POWDER COATED IN A TWO PART PROCESS. STANDARD COLOR BLACK. OTHER COLORS AVAILABLE - IF INTERESTED, PLEASE CALL FOR DETAILS	1	4,500.00	4,500.00
SB6LS	SANDBLAST NATURAL GRAY CONCRETE LIMESTONE MIX TOP	1	0.00	0.00
NET	YOUR CHOICE OF NET STYLE ONE OR STYLE TWO	1	0.00	0.00
Total				

Quoted by:	
Signature:	Date:

Doty & Sons Concrete Products, Inc.

1275 East State Street
Sycamore, IL 60178

Phone: 800-233-3907

Fax: 815-895-8035

Quotation

Date	Quotation	Item 6.	er
6/14/2021	234737		

Name / Address
CITY OF WOODCREEK PAT RAWLINGS 82 BROOKHOLLOW DRIVE WOODCREEK, TX 78676
Customer Phone
512-983-6053

Ship To
CITY OF WOODCREEK WOODCREEK, TX 78676
Customer Fax
PAT@PATRAWLINGS.COM

Project/Job	Terms	FOB	Rep	Ship Via
		78676	JD	MOTOR FREIGHT
Item	Description	Qty	Price Each	Total
SH1	PACKING AND SHIPPING - SEE COMPLETE DESCRIPTION BELOW.	1	1,121.00	1,121.00
SH1D	STANDARD DESCRIPTION - ALL SHIPPING CHARGES ARE LISTED ABOVE. SHIPPING IS SHIPPED BY MOTOR FREIGHT TRAILER ON PALLETS, TO ONE BUSINESS ADDRESS ONLY. CUSTOMER PERSONNEL TO MEET DRIVER (DURING REGULAR BUSINESS HOURS) AND PROMPTLY REMOVE PALLETS FROM TRUCK. A 4,000# PALLET JACK TO MOVE ITEMS TO TRAILER DOOR AS WELL AS A FORKTRUCK RATED @5,000# WITH 48" FORKS FOR UNLOADING MUST BE ON SITE AT TIME OF ARRIVAL. CUSTOMER TO UNPACK ITEMS AND SET AT SPECIFIC SITES. DELIVERY FEES ARE BASED ON FUEL PRICES TODAY. BECAUSE OF UNCERTAIN FUEL COSTS IN THE FUTURE, WE RESERVE THE RIGHT TO ADD OR SUBTRACT ANY CHANGE IN FUEL COSTS IN EFFECT ON THE DAY OF DELIVERY. ADDITIONAL FREIGHT COMPANY SERVICES, IF NEEDED, MUST BE SPECIFIED ON PURCHASE ORDER AND CHARGES WILL BE ADDED ONTO FINAL BILLING.		0.00	0.00
	Out-of-state sale, exempt from sales tax		0.00%	0.00
Total				\$5,621.00

IF YOU WISH TO PLACE AN ORDER, PLEASE SIGN AND DATE WHERE INDICATED AND RETURN BY FAX. THANK YOU FOR THE OPPORTUNITY TO SUBMIT THE ABOVE QUOTATION. THE INDICATED PRICE IS VALID FOR 30 DAYS. NOTE: ANY CHANGE IN ITEM OR QUANTITY WILL REQUIRE A REBID.

Quoted by:

Signature:

Date:

STONE AGE



CONCRETE TABLE TENNIS

BRAVADO OUTDOOR | EVERYONE PLAYS

Item 6.

1

Permanent Concrete Game Tables



Bravado Outdoor Products LLC. 541-671-6318 Kendra@concretetabletennis.com

STONE AGE

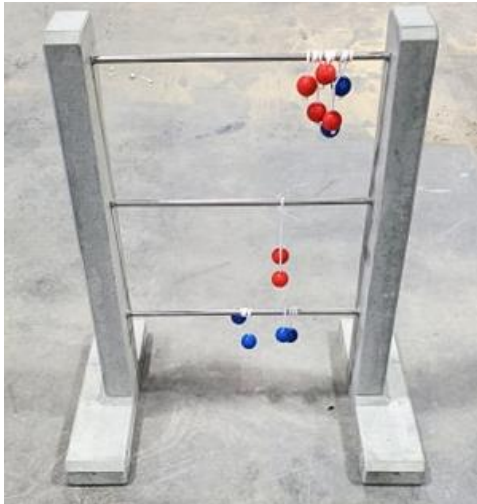


CONCRETE TABLE TENNIS
BRAVADO OUTDOOR | EVERYONE PLAYS

Item 6.

2

New for 2021! Ladder Ball!



All Products Feature:

- Triple reinforced concrete
- Regulation lines and low reflectivity
- Beautiful integrally colored concrete
- Vandal resistant fasteners
- SOLID concrete no hollow spots underneath
- FUN FUN FUN!
- Installs on most flat surfaces or existing solid surfaces
- Easy 1 hour set up and can be relocated
- Designed for over 50 years of excellent life
- 3 year limited warranty
- Shipped WORLDWIDE

Bravado Outdoor Products LLC. 541-671-6318 Kendra@concretetabletennis.com

STONE AGE



CONCRETE TABLE TENNIS

BRAVADO OUTDOOR | EVERYONE PLAYS

WHO WE ARE

Bravado Outdoor Products specializes in unique, permanent concrete recreational equipment for parks, schools, entertainment venues and home use. Bravado Promotes healthy physical and social activity for all ages and physical activity levels. Everybody plays! Our strong background in Government and construction contract sales makes us the only choice for permanent concrete games in North America. Our focus on beauty and craftsmanship makes us the inspired choice for entertainment venues and fine homes.

OUR PHILOSOPHY

We are the essence of post industrialism. Industrial quality is only a starting point. The ending point is to inspire joy through craftsmanship and to change places into a spontaneous combustion of activity, fun and innovative spirit.

QUALITY

Our finished products are satin smooth. Ball bounce and play meet ITTF standards except for the durable steel nets. Our nets are 3/8" steel with powder coating. Our nets are ALWAYS custom designed for each unique project! Underneath all that beauty, the engineering is overdesigned for long term durability. All Bravado tables are produced using our proprietary triple reinforced concrete. We finish the tables using quality anti-graffiti coating for long term beauty even in the roughest public venues.



STONE AGE



CONCRETE TABLE TENNIS
BRAVADO OUTDOOR | EVERYONE PLAYS

Pricing



Uptown Model Concrete Table Tennis Custom steel net, grey legs, table tennis lines.

Natural Grey with black lines \$5,665.00

Black acid wash or Green Integral \$5,865.00

Blue Integral Color \$6,308.00



Cantilever Model Concrete Table Tennis Black legs, custom steel net, table tennis lines.

Natural Grey with black lines \$6,308.00

Black acid wash or Green Integral \$6,631.00

Blue Integral Color \$6,975.00



Trapezoid Model Concrete Table Tennis with 2 Grey legs, custom steel net, table tennis lines.

Natural Grey with black lines \$6,734.00

Black acid wash or Green Integral \$6,949.00

Blue Integral Color \$7,377.00



Round 4 Way Table Tennis (New Product 2020)

Round Four Way Table Tennis makes an excellent complement to locations with regular Table Tennis Tables. Round Four Way Table Tennis allows for 2-4 players (4 is standard).

Green Table \$8,116.00

Multi Color (Blue, Red, Green, Black) \$8,827.00

STONE AGE

Item 6.

5



CONCRETE TABLE TENNIS

BRAVADO OUTDOOR | EVERYONE PLAYS



Dining Table Models Concrete Table Homeowners and entertainment venues like the flexibility of our dining table leg designs that facilitate seating for 10-12. Available with removable net upon request.

Brown Table Tennis Table \$6,308.00



Concrete Foosball Table Solid concrete top, drain holes in goals, stainless steel rods. Replaceable plastic men, rubber bumpers and handles.

Black or Green Integral Color \$5,950.00

Foosball Table with Trapezoid leg \$6,484.00



Concrete Fooosball Table

All the features of our regular Foosball table, but with twice the fun! Two times the rods and men makes this a great 4-8 person game.

Black or Green Integral Color \$10,835.00



Concrete Cornhole Boards

One piece concrete Cornhole Boards. Custom colors and logo pricing by request.

Black Integral Color \$1,684.00



Concrete Ladder Ball

Concrete Ladder ball posts with stainless steel bars.

Natural Grey \$1,684.00

Bravado Outdoor Products LLC. 541-671-6318 Kendra@concretetabletennis.com

STONE AGE



CONCRETE TABLE TENNIS

BRAVADO OUTDOOR | EVERYONE PLAYS



Genius Chess Table

Available in Freestanding or Direct Burial Post. Features marble inlay chess board, stone accent pieces, bolt down brackets and available with recycled glass content.

Freestanding \$2,568.00 Direct Burial Post \$2,168.00
Recycled Glass Content \$250.00 Integral Colors \$313.00



Chinese Checkers Table

Available in Freestanding or Direct Burial Post. Features cast in board for marbles, stone accent pieces, bolt down brackets and available with recycled glass content.

Freestanding \$2,568.00



Domino Table

Available in Freestanding or Direct Burial Post. Features cast in piece holders, beverage holders, bolt down brackets and available with recycled glass content.

Freestanding \$3,638.00



Backgammon Table

Available in Freestanding or Direct Burial Post. Features marble inlay Backgammon board, stone accent pieces, bolt down brackets and available with recycled glass content.

Freestanding \$2,835.00

STONE AGE

Item 6.

7



CONCRETE TABLE TENNIS

BRAVADO OUTDOOR | EVERYONE PLAYS



Knight Chess Table

One Piece Knight base chess table. Marble inlay chess board, stone accent pieces, available with recycled glass content for color and beauty.

Black or White Knight \$3,855.00

Recycled Glass Content \$250.00



Chess Stools (per pair)

Chess stools with bolt down brackets. Custom colors available on request. (Freestanding or Direct Burial to match your table)

Set of Stools \$476.00

Colored Stools \$595.00



Concrete Shuffleboard

First in the world concrete shuffleboard tables. Our monolith tops are the result of 8 years of playful precision concrete design.

Grey Concrete with Brown Sliding Surface and Board Stain Pattern.

12' \$13,553.00 16' \$16,445.00 22' \$23,941.00



Concrete Poker Table

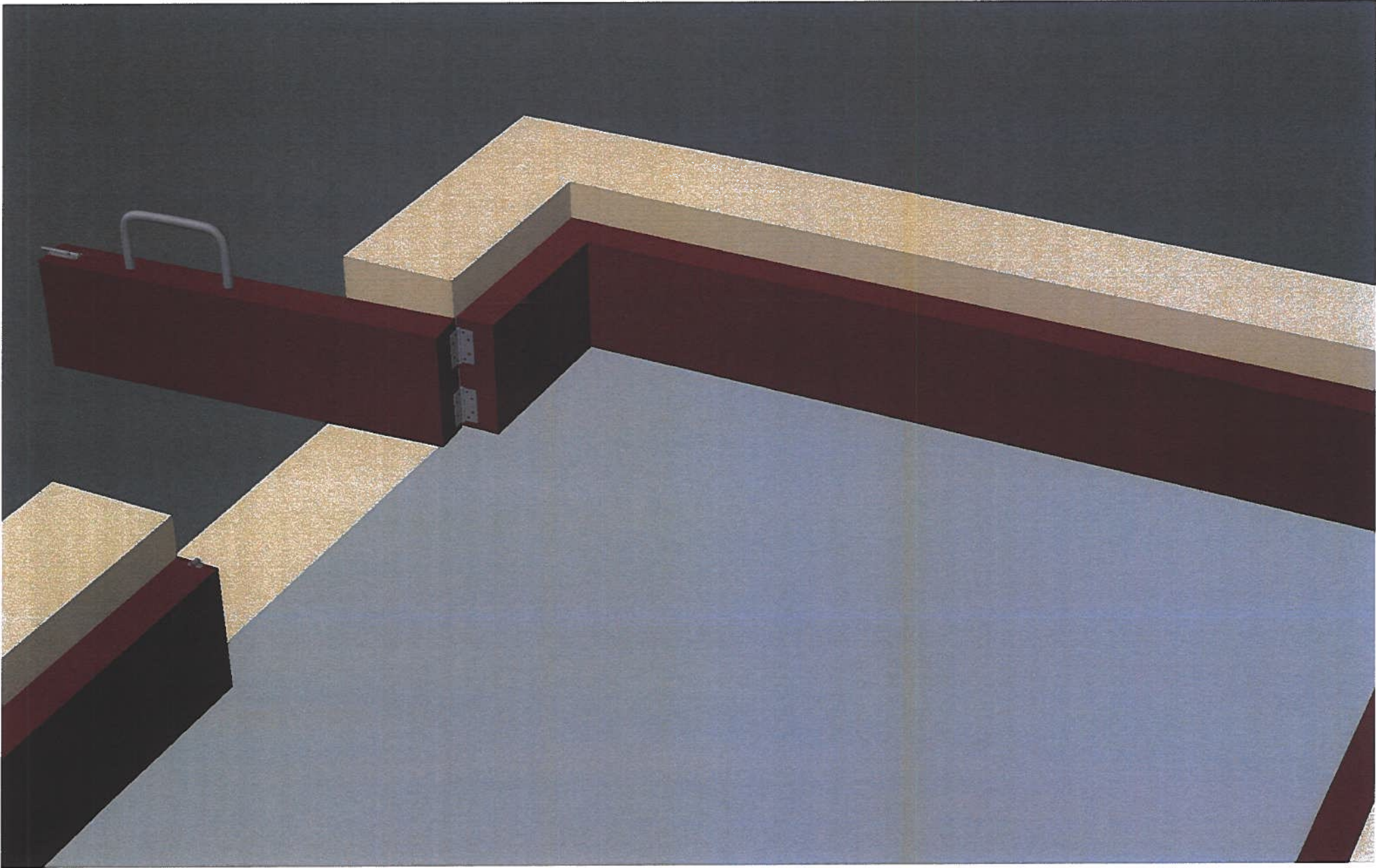
Solid Concrete Octagon Poker table with cast chip trays and cup holders. Custom colors and logos by request.

Black Integral Color \$8,115.00



The Bravado Advantage

- 🎾 Bravado produces the highest quality concrete game tables worldwide.
- 🎾 Bravado Manufactures our own products in our own facility. Unlike the competition who completely outsources their product. Made by hand to our stringent specifications by Bravado concrete artisans in our cutting-edge facility.
- 🎾 Every piece has been professionally engineered for public use and to last for decades in any environment.
- 🎾 Concrete game tables are ALL we do at Bravado. We are the leader in outdoor concrete games products so 100% of our research, engineering, design and production goes into making the highest quality game tables possible.
- 🎾 Bravado has sold concrete game tables around the world to resorts, schools, cities, military, home owners and even Olympic Committees as far away as Doha, Qatar. We have the experience to get it right and delivered safely to any location.
- 🎾 Bravado offers customization options concrete colors, custom designed plasma cut nets and powder coat colors so every table is one of a kind for your project.
- 🎾 There is no sales tax in Oregon so buying from Bravado can potentially save you hundreds if not thousands of dollars on your projects.
- 🎾 Bravado is comprised of individuals who love Table Tennis and our chosen games. We take pride in playing our games, promoting the sport and making our products true to the regulations and specifications of the ITTF. While ensuring our products last for generations.
- 🎾 Bravado Tables are Triple reinforced with steel and two kinds of fiber reinforcement using our proprietary process to ensure the highest quality of concrete finish and best longevity in the concrete industry.



**CREEKSIDE
PROPERTY
EQUIPMENT
PROPOSAL 1
6/14/2021**

CREEKSIDE PROPERTY FAQs

- **Why is the equipment so expensive?**

Nice things have a proportional price tag. We have approached this selection with a minimum quality standard that we feel is consonant with the overall aesthetic of our City, long-term durability, low maintenance cost over the lifespan of the equipment, and the safety of our children. There are multiple equipment options that will fit on this property that cost four and five times this proposed amount.

- **Why is the installation cost so high?**

It is very reasonable, actually, at essentially one third of the material cost for the equipment. Typical commercial construction costs are often close to a 1 to 1 ratio between labor and materials. Installation cost does not appear to be a substantial profit center in this proposal.

- **Do we have to choose this playground equipment?**

Absolutely not. This design proposal is exactly that: just a proposal. It is a design concept to start the conversation and set a rough-order-of-magnitude price tag. A great metaphor is “You can’t steer a parked car”.

- **I don’t like the equipment color scheme. It seems loud, and visually unappealing. Can we change the colors?**

Absolutely. The manufacturer has a full color palette, and any color or combination of colors can be chosen for any component of the system. The system is completely custom built to order.

- **Why are we proposing the use of “mulch” as the safety surface surrounding the equipment?**

This is not mulch. It is engineered wood fiber, or EWF. EWF is a composite material made up of large, medium and fine wood particles designed to be impact-forgiving for safety, cohesive for ease of maintenance, and inexpensive to install and replace. EWF costs around \$4.00 per square foot for initial installation, and about \$1.00 per square foot to repair or renew every other year. By comparison, poured in place rubber safety surface will be about \$85,000 in additional cost. This surface has a high initial installation cost, but the only maintenance required is an epoxy re-coat every 4 years that is very inexpensive. And can essentially be done by anyone with a paint roller.

- **I have heard swings are difficult and expensive to maintain. Do we need swings?**

Yes. Playgrounds have swings, and children expect to see them. They are a key component, and a major attraction. The cost and difficulty issues supposedly associated

with swings disappear if the equipment is selected and installed correctly. This equipment has been selected correctly.

- **There doesn't seem to be enough room for parking spaces.**

Where will everyone park?

This proposal is for a neighborhood "Pocket Park". The entire City of Woodcreek is one square mile, and this park is in the center. Foot and bicycle traffic to the park should be encouraged, while additional vehicle traffic and parking should not. This proposal does not recommend substantial parking area apart from the space for three vehicles apparently available. One might propose a single parking space, with a handicapped van-accessible space next to it. Bike racks will be included.

- **Will there be a water fountain available?**

AquaTexas has stated their willingness to furnish the City with a fountain. This would be a good place for it. There are utilities immediately adjacent that could be tapped. A line tap, a ¾" water supply line and a backflow preventer in a valve box would be not an appreciable expense. We can buy local for this service.

- **Will we have to cut down trees to do this?**

Yes, but not to any great extent. The old broken oak in the center of the property is no longer structurally sound and has been examined by a Certified Arborist. It is nice to look at, but it is ready to fall over in the next storm. There are also a pair of stunted cedars that need to be removed. All other trees should be pruned up by an arborist and left in place.

- **What will the neighbors think?**

There has never been a civic project of any kind without opposition. When the aqueducts were built in Rome, there was most likely a series of petitions circulated against it. Park hours should be daylight hours only, with no facility lighting. No Parking signs in the area should be a component of the project. Parking should be extremely limited, if not non-existent. The demand for a playground facility has been illustrated previously through surveys and an informal census.

- **What is the timeline for construction of this playground?**

Upon payment, the manufacturer needs eight weeks to build it at the factory. One week for shipping it to the site, and then one week to install it all, barring weather delays.

- **Are there any additional costs?**

Yes. We will want to look into fences, sidewalks, parking spaces, signs, and landscaping. A value should be assigned to this work, and further design work should be done to incorporate these elements. We will also need to furnish an 8' tall chain-link rental fence to surround the construction site from start to finish. The cost for this is not exorbitant. Funding should be sought based on a ROM number for all of these items.

- **How will we pay for this?**

75% of this cost should be paid for with Hays County funds. The remaining 25% in matching funds should be covered by additional grants, private donations, fundraisers, City funds, and other means. Ideally, the City would pay little or nothing, and we can support local businesses in the buy-out effort. The required yearly maintenance costs can be calculated simply and become a recurring budget allotment by Ordinance for Council to approve.



DRAFT

Intellectual property of GameTime, a PlayCore Company. The site shown in rendering is an interpretation and may not reflect exact site conditions.

City of Woodcreek

PS20006 Nature Walk
View 2



DRAFT

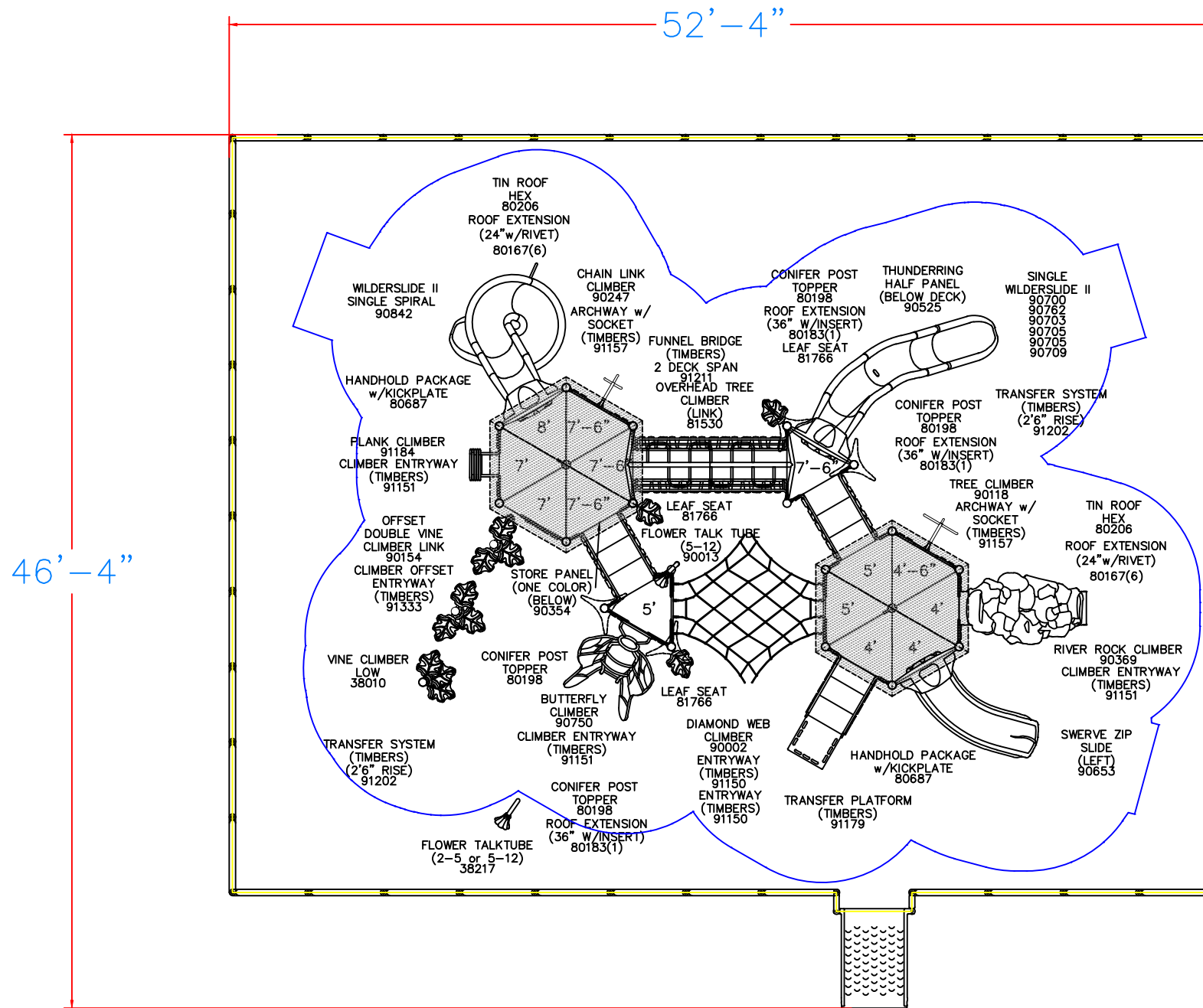
Intellectual property of GameTime, a PlayCore Company. The site shown in rendering is an interpretation and may not reflect exact site conditions.

City of Woodcreek

PS20006 Nature Walk
View 1

DRAFT

Item 6.



SURFACING		CURBING	
TYPE	EFW	TYPE	PLSTC
SQ FT	2085	LN FT	184
DEPTH	12"	HT	12"

SCALE IN FEET

<p>150 PlayCore Drive SE Fort Payne, AL 35967 www.gametime.com</p>	<p>City of Woodcreek</p>	<p>This Unit includes play events and routes or travel specifically designed for special needs users. It is the opinion of the manufacturer that these play events and routes of travel conform to the accessibility requirements of the ADA (Americans with Disabilities Act)</p>	<table border="1"> <tr> <td>Total Elevated Play Components</td> <td>0</td> <td>Required</td> <td>0</td> </tr> <tr> <td>Total Elevated Play Components Accessible By Ramp</td> <td>0</td> <td>Required</td> <td>0</td> </tr> <tr> <td>Total Elevated Components Accessible By Transfer</td> <td>0</td> <td>Required</td> <td>0</td> </tr> <tr> <td>Total Accessible Ground Level Components Shown</td> <td>0</td> <td>Required</td> <td>0</td> </tr> <tr> <td>Total Different Types Of Ground Level Components</td> <td>0</td> <td>Required</td> <td>0</td> </tr> </table>	Total Elevated Play Components	0	Required	0	Total Elevated Play Components Accessible By Ramp	0	Required	0	Total Elevated Components Accessible By Transfer	0	Required	0	Total Accessible Ground Level Components Shown	0	Required	0	Total Different Types Of Ground Level Components	0	Required	0	<p>This play equipment is recommended for children ages 5-12</p>	<p>Minimum Area Required: 52'-4" x 46'-4"</p> <p>Scale: This drawing can be scaled only when in an 18" x 24" format</p>	<p>IMPORTANT: Soft resilient surfacing should be placed in the use zones of all equipment, as specified for each type of equipment, and at depths to meet the critical fall heights as specified by the U.S. consumer Product Safety Commission, ASTM standard F 1487 and Canadian Standard CAN/CSA-Z-614</p>	<p>Drawn By: MW</p> <p>Date: 06/08/2021</p> <p>Drawing Name: TM-06021-21-1A1</p>
				Total Elevated Play Components	0	Required	0																				
Total Elevated Play Components Accessible By Ramp	0	Required	0																								
Total Elevated Components Accessible By Transfer	0	Required	0																								
Total Accessible Ground Level Components Shown	0	Required	0																								
Total Different Types Of Ground Level Components	0	Required	0																								
<p>Representative Total Recreation Products, Inc.</p>																											



Intellectual property of GameTime, a PlayCore Company. The site shown in rendering is an interpretation and may not reflect exact site conditions.

City of Woodcreek

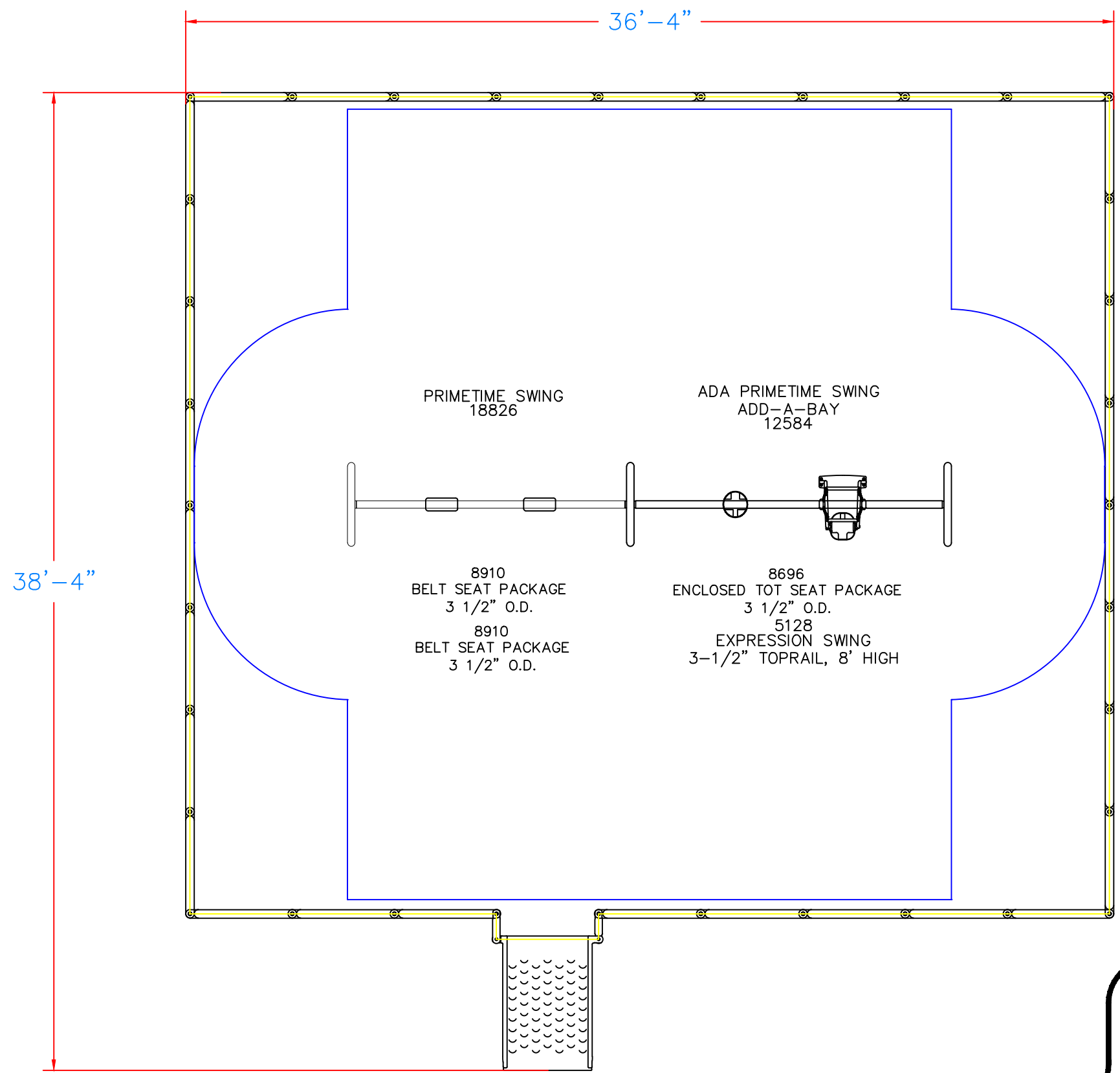
2 Bay Primetime Swings



www.gametime.com



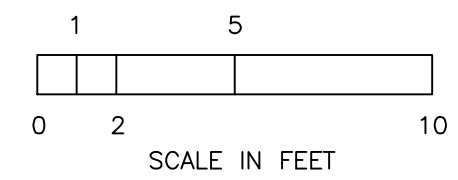
www.totalrecreation.net



DRAFT

CURBING	
TYPE	PLSTC
LN FT	136
HT	12"

SURFACING	
TYPE	EWF
SQ FT	1157
DEPTH	12"



This Unit includes play events and routes or travel specifically designed for special needs users. It is the opinion of the manufacturer that these play events and routes of travel conform to the accessibility requirements of the ADA (Americans with Disabilities Act)	Total Elevated Play Components	0	Required	0
	Total Elevated Play Components Accessible By Ramp	0	Required	0
	Total Elevated Components Accessible By Transfer	0	Required	0
	Total Accessible Ground Level Components Shown	0	Required	0
	Total Different Types Of Ground Level Components	0	Required	0

GameTime
A PLAYCORE Company
150 PlayCore Drive SE
Fort Payne, AL 35967
www.gametime.com



City of Woodcreek

Representative
Total Recreation Products, Inc.

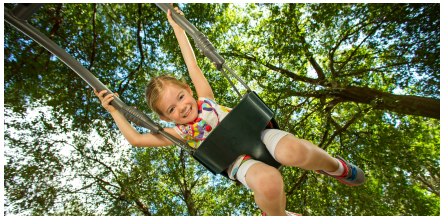
This play equipment is recommended for children ages 2-5, 5-12

Minimum Area Required:
36'-4" x 38'-4"
Scale:
This drawing can be scaled only when in an 11" x 17" format

IMPORTANT: Soft resilient surfacing should be placed in the use zones of all equipment, as specified for each type of equipment, and at depths to meet the critical fall heights as specified by the U.S. consumer Product Safety Commission, ASTM standard F 1487 and Canadian Standard CAN/CSA-Z-614

Drawn By:
MW
Date:
06/08/2021
Drawing Name:
TM-06021-21-1A2

DRAFT



Expression Swing is a GameTime exclusive and the industry's first playground swing that promotes intergenerational play as adults and children swing together. The patented face-to-face design features a bucket seat for children under five and a comfortable adult swing seat that allows a parent and child (or grandparent and grandchild) to interact with each other and experience...

Features and Benefits:

- See Eye to Eye - Patent-pending face-to-face design positions adult and child at eye level with one another so they can interact
- Swing in Comfort - Exclusive platform swing seat is ergonomically designed for adults and compliant with current swing safety standards

Model: 5128

Limited Lifetime Warranty on uprights, hardware and connections. Visit gametime.com/warranty for full warranty information





DRAFT

Our park accessories and amenities are constructed of the same durable materials as our playground equipment and are supported by a worldwide network of qualified recreation consultants. Together we can make your park a welcome oasis for your community.

Features and Benefits:

Includes in-ground amenities:

- 6' Tuffclad Bench (x2)
- 32 Gallon Tuffclad Receptacle

Model: FS21008

Limited Lifetime Warranty on uprights, hardware and connections. Visit gametime.com/warranty for full warranty information



Designing award-winning playgrounds since 1929.



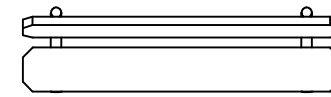
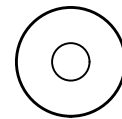
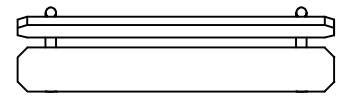
Certified Installer Network - GameTime trained for GameTime playgrounds.



Complies with ASTM standards before it leaves the factory.

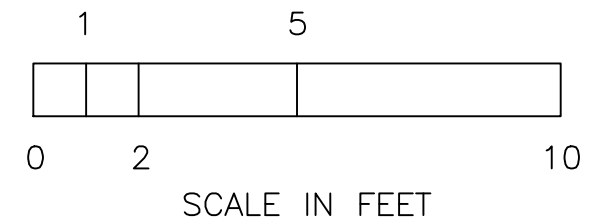
TUFFCLAD
6' BENCH w/BACK
IN-GROUND (PS)
28009

TUFFCLAD
6' BENCH w/BACK
IN-GROUND (PS)
28009



TUFFCLAD RECEPTACLE
FLAT LID, IN-GROUND (PS)
28026

DRAFT



This Unit includes play events and routes or travel specifically designed for special needs users. It is the opinion of the manufacturer that these play events and routes of travel conform to the accessibility requirements of the ADA (Americans with Disabilities Act)

Total Elevated Play Components	-	Required	-
Total Elevated Play Components Accessible By Ramp	-	Required	-
Total Elevated Components Accessible By Transfer	-	Required	-
Total Accessible Ground Level Components Shown	-	Required	-
Total Different Types Of Ground Level Components	-	Required	-

GameTime
A PLAYCORE Company
150 PlayCore Drive SE
Fort Payne, AL 35967
www.gametime.com



City of Woodcreek
FS21008 Comfort Package B
Representative
Total Recreation Products, Inc.

This play equipment is recommended for children ages
-

Minimum Area Required:
-
Scale: -
This drawing can be scaled only when in an 8 1/2" x 11" format

IMPORTANT: Soft resilient surfacing should be placed in the use zones of all equipment, as specified for each type of equipment, and at depths to meet the critical fall heights as specified by the U.S. consumer Product Safety Commission, ASTM standard F 1487 and Canadian Standard CAN/CSA-Z-614

Drawn By:
MW
Date:
06/09/2021
Drawing Name:
TM-06021-21-2A3



c/o Total Recreation Products, Inc.
 17802 Grant Road Cypress, Texas 77429
 Phone: 281-351-2402
 Toll Free: 800-392-9909
 Fax: 281-351-2493

06/0
 Quote #101606 Item 6.

TM-06021-21 City of Woodcreek

City of Woodcreek
 Attn: Cody Abney
 27 Shade Grove Lane
 Wimberley, TX 78676
 Phone: 512-677-7860
 cody.abney@ryancompanies.com

Ship to Zip 78744

Quantity	Part #	Description	Unit Price	Amount
1	RDU	GameTime - TM-06021-21-2A1 PS20006 Nature Walk 5-12 Unit	\$97,141.00	\$97,141.00
1	38217	GameTime - Flower Talk Tube Ground Level 2-5	\$633.00	\$633.00
1	RDU	GameTime - 2-Bay Primetime Swing with (2) Belt Seats, (1) Enclosed Tot Seat & (1) Expression Swing	\$4,282.00	\$4,282.00
1	RDU	GT-Site - FS21008 Comfort Package B	\$2,220.00	\$2,220.00
1	RDU	GameTime - Surfacing Accessories: (78) Playcurbs, (2) ADA Access Ramps, (2) Rolls of Geo-Textile Fabric & (7) Wear Mats	\$8,603.00	\$8,603.00
1	178749	GameTime - Owner's Kit	\$60.00	\$60.00
1	W86854	GT-Impax - 161 CY (3,242 SF) Engineered Wood Fiber Surfacing, 12" Compacted Depth- <i>Price includes discount of \$607.23 and freight to site</i>	\$5,436.26	\$5,436.26
1	INSTALL	GameTime - Installation- <i>Installation of Above Equipment and Surfacing Only; No other site work, demolition or concrete work included. Acquisition of any and all permits is the sole responsibility of the customer. Standard installation does not include any extra or additional machinery, drillers, etc., for rock excavation. If rock conditions are encountered, additional charges will apply.</i>	\$33,582.90	\$33,582.90
Contract: OMNIA			Sub Total	\$151,958.16
			Discount	(\$25,350.65)
			Material Surcharge	\$8,776.29
			Freight	\$3,250.00
			Total	\$138,633.80

Comments

Freight Calculated to Installer Address

Omnia Partners (Formerly US Communities) #201701134

DUE TO FLUCTUATING FUEL COSTS, FREIGHT SHOWN IS ESTIMATED FREIGHT. ACTUAL FREIGHT WILL BE DETERMINED AT THE TIME OF YOUR ORDER. PLEASE FEEL FREE TO CONTACT US TO VERIFY CURRENT FREIGHT CHARGES PRIOR TO PLACING YOUR ORDER.

Important Terms & Conditions - Please Review

To place an order, you must provide one of the following: a Purchase Order assigned to GameTime; or this Price Quotation, signed by an authorized purchaser, with a check made payable to GameTime. GameTime will also accept payment by Visa, MasterCard, or American Express. A current approved credit application is required for Net 30 terms.



c/o Total Recreation Products, Inc.
17802 Grant Road Cypress, Texas 77429
Phone: 281-351-2402
Toll Free: 800-392-9909
Fax: 281-351-2493

06/0
Quote #101606 Item 6.

TM-06021-21 City of Woodcreek

This quotation explicitly excludes any and all items not expressly specified or identified above. No other product, equipment, or service is included, regardless of any Contract Document, Contract Section, Plans, Specifications, Drawing, or Addendum. Delivery for most GameTime equipment is approximately 6-8 weeks after all order documents have been received and payment terms have been approved. A current, approved credit application is required for N30 terms. To place an order, you must provide a purchase order or a signed Total Recreation Products, Inc. (hereafter described as TRP) quote, assigned to GameTime. Neither general contractor nor subcontractor contracts can be accepted. Purchase documents that contain indemnity or hold harmless conditions cannot be accepted. Retainage is not permitted. The following must be received before your order can be processed: complete billing and shipping addresses, a contact name and phone #, and all color choices. Manufacturer's colors may vary from year to year. You are responsible for ensuring that any required submittal approvals are completed before placing your order for processing. TRP reserves the right to limit submittals to one copy. Shop drawings, blueprints, sepias, are not available. Closeout documents may be limited to GameTime or TRP standard issue. If Sales Tax Exempt, a copy of your tax exemption form or resale certificate must accompany your order, or any applicable sales tax, will be added to your invoice. Most GameTime products are shipped from the Ft. Payne, AL plant. GameTime cannot hold orders or store equipment. Equipment is invoiced when shipped. If a cash sale, your payment must be received in full before the order will be processed. Contractors must also provide copies of current, fully executed bid/performance/payment bonds, as applicable. Pricing shown does not include any charges for permits, bonding, prevailing wage, or additional insured certifications.

Unless otherwise noted, any quantity of surfacing or playcurbs quoted has been calculated specifically for the equipment and layout shown. No additional surfacing or curbing is included, and no allowance has been made, for an uneven, convoluted or larger site, or for a different layout. Neither GameTime nor TRP is responsible for any surface, curbing, border, or drain that is provided by others. Also please confirm that your area is adequate for the equipment that you are purchasing.

Installation charges, if quoted, are for a "standard" installation unless specifically noted to be otherwise. Installation charges are due upon completion. Standard installations are based upon a soil work site, that is freely accessible by truck, (no fencing, tree/landscaping or utility obstacles, etc.), and level, (+/- 1-2% maximum slope). An accessible water source must be available to the installer. Any site work that is not expressly described is excluded. Standard installation does not include any extra or additional machinery, drillers, etc., for rock excavation. If rock conditions are encountered, additional charges will apply.

Standard installations generally require from 2-10 business days to complete, depending upon the amount and type of equipment, site conditions, weather, and the installer's schedule. Work may or may not be performed in consecutive days. Playcurbs are staked in, not set in concrete. Engineered wood fiber and shredded rubber surfacings are spread, not compacted, rolled, or watered. Landscape timbers are not warranted. The Customer is responsible for locating and clearly marking all underground utilities in the installation area before any installation work can begin. The installer is not responsible for damages, repairs, or discontinuance of business due to damaged utilities.

If applicable, sprinkler system locates, re-working and repairs are excluded from installation charges. Installation of all products, (equipment, borders, fall surfacing and amenities) are as quoted and approved by acceptance of quotes and drawings. As a precautionary measure, work in progress areas will be taped off at the end of the workday. Pier spoils from installation shall be spread at site, site will be left rough grade. The installer is not responsible for any damages or re-work resulting from after hours events or activities during the work in progress period. Temporary fencing is only provided by specific request, and additional charges will apply. Collectively and/or individually, not the manufacturer, TRP, their representatives, nor the installation company shall be held liable for any damages resulting from misuse, vandalism, or neglect. Any deviations from approved and accepted placement of all items, along with additional work, over and above quoted items, will be chargeable to the customer. Once work is completed the customer will be notified if present at the job site, and all responsibility of any new work will be transferred to the customer. The customer is responsible for maintaining the integrity of completed installation work until all components have seated and/or cured (concrete footings, etc.). Your project site must be completely prepared and ready to receive your equipment before any installation work begins. Acquisition of any and all permits is the sole responsibility of the customer. Additional charges may be billed for any extra hours or trips needed as a result of the work site not being ready. Neither the installation contractor, GameTime nor TRP will be responsible for delays caused by shortages, incorrect parts, weather conditions, other contractors, or lack of site readiness.

If you are receiving your equipment, you are responsible for unloading and accepting delivery from the freight company and reporting any damaged freight or shortages on the freight bill at the time. You will also be responsible for a complete inventory of your received equipment and reporting any discrepancies to us immediately. Neither the freight company nor the manufacturer will resolve shipment discrepancies that are not reported immediately. Make sure that all items have been received before any type of installation work is scheduled. The freight carrier will be instructed to call your designated contact 24 hours before delivery to arrange a delivery appointment.

Once accepted, orders can only be changed or canceled with the consent of GameTime and TRP, and on terms that will indemnify them against loss. Changed or canceled orders are subject to a \$100.00 service charge. Additionally, canceled orders are subject to a 25% restocking fee, plus freight charges (to and from). Built-to-order equipment orders are non-cancelable. Changes to orders that have been shipped and invoiced are subject to the above \$100.00 service charge plus additional restocking/return charges of 25%. Non-returnable items shall be charged at full invoice value. Any return transportation charges shall be for the Buyer's account. Replacement parts are also subject to the cancellation/returns policy. Please carefully review any research information that has been sent to you and confirm that you are ordering the correct replacement parts for your equipment. This quotation is valid 30 days. After 30 days, please request an updated quote. Prices may be subject to material and fuel surcharges at the time of shipment and are subject to change without notice. Current prices will apply at the time of shipment. Acceptance of this quote indicates your agreement to GameTime's credit terms, which are net 30 days, FOB shipping with approved credit. Any deviations from this proposal may invalidate the quoted pricing and/or terms.



c/o Total Recreation Products, Inc.
 17802 Grant Road Cypress, Texas 77429
 Phone: 281-351-2402
 Toll Free: 800-392-9909
 Fax: 281-351-2493

06/0
 Quote #101606 Item 6.

TM-06021-21 City of Woodcreek

THIS QUOTATION IS SUBJECT TO POLICES IN THE CURRENT GAMETIME PARK AND PLAYGROUND CATALOG AND THE FOLLOWING TERMS AND CONDITIONS. OUR QUOTATION IS BASED ON SHIPMENT OF ALL ITEMS AT ONE TIME TO A SINGLE DESTINATION, UNLESS NOTED, AND CHANGES ARE SUBJECT TO PRICE ADJUSTMENT. PURCHASES IN EXCESS OF \$1,000.00 TO BE SUPPORTED BY YOUR WRITTEN PURCHASE ORDER MADE OUT TO GAMETIME, C/O TOTAL RECREATION.

Please complete and return with your required form of payment:

Acceptance of quotation:

Accepted By (printed): _____ P.O. No: _____
 Signature: _____ Date: _____
 Title: _____ Phone: _____
 Facsimile: _____ Purchase Amount: **\$138,633.80**

Order Information:

DRAFT

Bill To: _____	Ship To: _____
Company: _____	Company: _____
Attn: _____	Attn: _____
Address: _____	Address: _____
City, State, Zip: _____	City, State, Zip: _____
Contact: _____	Contact: _____
Email Address: _____	Email Address: _____
Tel: _____	Tel: _____
Fax: _____	Fax: _____

For non-taxable purchases: Please also provide a copy of your Sales Tax Exemption Certificate or Resale Certificate.

CREEKSIDE PROPERTY ADDENDUM

1. Base equipment cost w/installation:	\$138,633.80
2. Two bike racks, for 12 bikes:	\$1800.00
3. Additional Comfort Package B:	\$2200.00
4. West/South side demising fence:	\$12,000.00
5. 4' x 150' DG pathway:	\$3600.00
6. Parking space:	\$1900.00
7. Landscaping:	\$1500.00
8. Construction fence rental:	\$1500.00
9. Contingency:	\$1000.00

Total ROM Cost:

\$164,133.80