



# KITAKATA SISTER CITY ADVISORY BOARD AGENDA

April 10, 2024 at 6:00 PM

Wilsonville Parks and Recreation Admin Office

---

**PARTICIPANTS MAY ATTEND THE MEETING AT:**

Zoom: <https://us02web.zoom.us/j/85902918334>

**TO PARTICIPATE REMOTELY OR PROVIDE PUBLIC COMMENT:**

Register with Erica Behler:

[Behler@ci.wilsonville.or.us](mailto:Behler@ci.wilsonville.or.us) or 503-570-1525

Individuals may submit comments by 12:00 PM on the day before the meeting date via email to the address above, or may mail written comments to:

Erica Behler- Wilsonville City Hall

29799 SW Town Center Loop East, Wilsonville, OR 97070

**CALL TO ORDER [6:00 PM]**

1. Roll Call

**CONSENT AGENDA**

2. Approval of 03.13.24 Minutes (Needs Motion)

**CITIZEN INPUT [6:05 PM]**

**FUNDRAISING / BUDGET [6:10 PM]**

3. Kitakata Line Item has \$5000 budget through June 30

**REVISIT GOALS DISCUSSION [6:15 PM]**

4. [Review draft goals document](#)
5. [Japanese Garden Update](#)

**REVISIT STRATEGIC PLAN [6:45 PM]**

**BOARD COMMENTS [7:00 PM]**

**ADJOURN [7:15 PM]**

**NEXT MEETING**

Wednesday, May 8, 2024 6:00 PM

Kitakata Sister City Advisory Board  
April 10, 2024

*Time frames for agenda items are not time certain (i.e. agenda items may be considered earlier than indicated). The City will endeavor to provide the following services, without cost, if requested at least 48 hours prior to the meeting by contacting Erica Behler, Recreation Coordinator at 503-570-1525 or [Behler@ci.wilsonville.or.us](mailto:Behler@ci.wilsonville.or.us) or: assistive listening devices (ALD), sign language interpreter, and/or bilingual interpreter. Those who need accessibility assistance can contact the City by phone through the Federal Information Relay Service at 1-800-877-8339 for TTY/Voice communication.*

*Habr  interpretes disponibles para aqu llas personas que no hablan Ingl s, previo acuerdo. Comun quese al 503-570-1525.*

# KITAKATA SISTER CITY ADVISORY BOARD GOALS

FISCAL YEAR JULY 1 2024- JUNE 30 2025



## INCREASE CONNECTIONS WITH COUNTERPARTS

- Quarterly zoom calls with Aizu-Kitakata International Association (AKIA)
- Have a board member chaperone a Wilsonville student trip to Kitakata



## ENGAGE WILSONVILLE YOUTH

- Create a specific position on the board for a teen member
- Recruit for the position above through targeted advertising and social media



## EXPAND EDUCATION FOR THE COMMUNITY

- Work with DEI Committee to co-host a speaker for existing speaker series
- Host a cooking class
- Create and maintain one annual event that the board becomes known for each year



## BUILD AWARENESS OF THE SISTER CITY PROGRAM IN WILSONVILLE

- Explore the feasibility of creating a Japanese style garden in a Wilsonville City Park with interpretive signage that explains the sister city relationship
- Continue to table at events to spread awareness



## CONTINUE TO PROVIDE HOME STAY PROGRAM

- Continue to provide meaningful home stay programs for students visiting Wilsonville
- Survey past participants to get feedback on past itineraries
- Create moments for ceremony within itineraries

# KITAKATA SISTER CITY ADVISORY BOARD GOALS

FISCAL YEAR JULY 1 2024- JUNE 30 2025



## ADJUST BYLAWS TO BETTER POSITION THE BOARD FOR LONGEVITY

- Work with the legal department to become a standing committee of the City
- Adjust bylaws to not include term limits
- Create a specific position within the board for a teen member



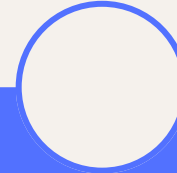
...



...



...



...

---

# INCREASING OUR SISTER CITY PROGRAM VISIBILITY WITHIN THE CITY OF WILSONVILLE

PRESENTED BY AARON REYNA

3/13/2024



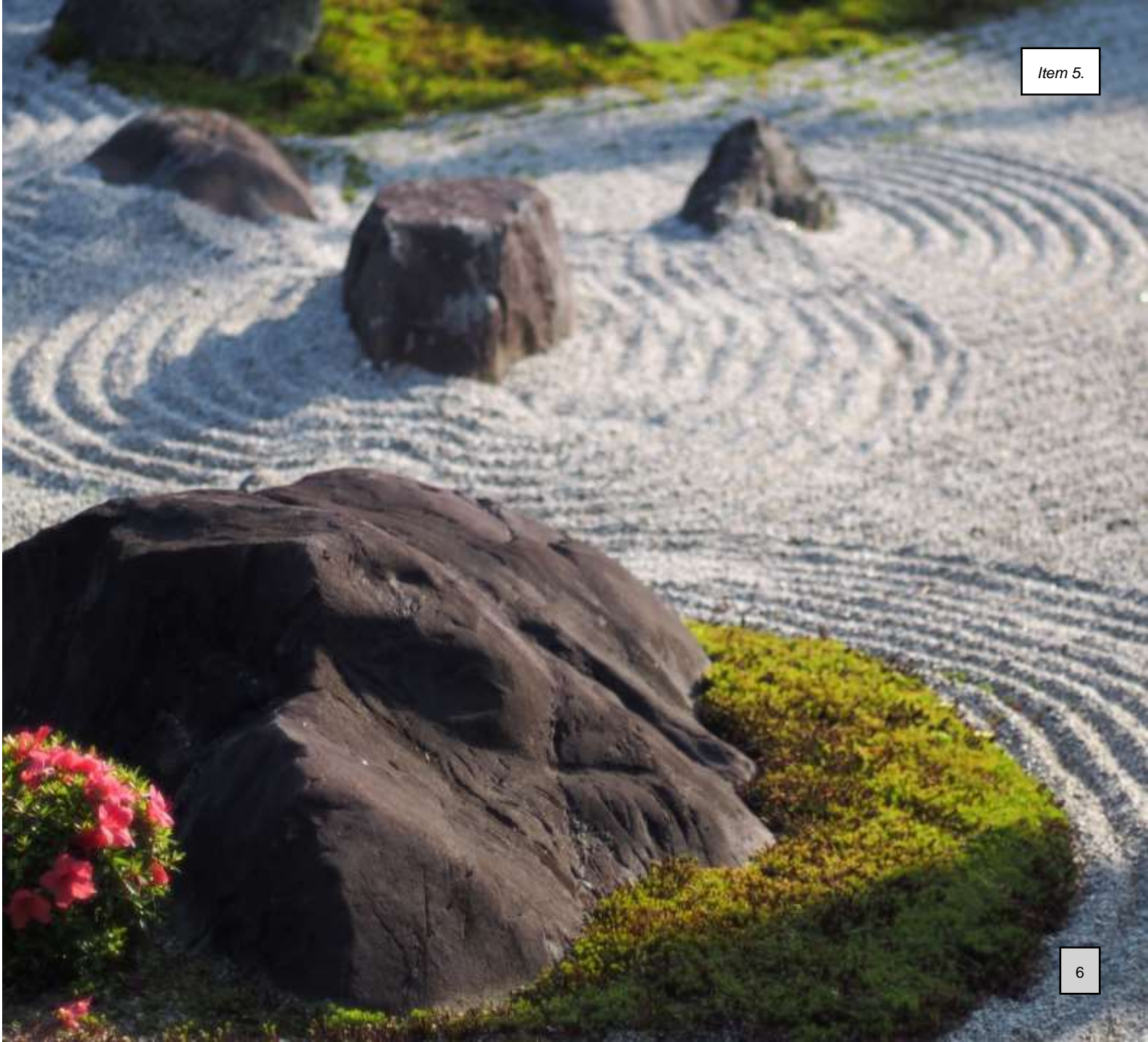
Item 5.



---

**HOW CAN WE INCREASE THE VISIBILITY OF OUR SISTER CITY PROGRAM WITHIN THE CITY OF WILSONVILLE AND FURTHER PROMOTE KITAKATA?**

What steps can we take to achieve this and who's past works can we honor, build from, and expand on?





# ROBERT MURASE

(SEPTEMBER 9, 1938 – JULY 19, 2005)

LANDSCAPE ARCHITECT WHO DESIGNED THE WATER FEATURE IN TOWN CENTER PARK AND MURASE PLAZA WHICH IS NAMED AFTER HIM.

"What attracts me to Japanese gardens lies in the essence of quietness which they express; their meditative emptiness, the illusion of nature, the effects of shadow and filtered light, and their stark simplicity. These gardens provide a sense of "wabi," the absence of any ostentatious element, and a sense of humility and melancholy. There is a dark, mysterious quality about them, an undiscoverable unknown which goes beyond our individual small self, which could be described as "yugen" in Japanese. These are some of the qualities I strive to express in the design process"

--Robert Murase

[https://en.wikipedia.org/wiki/Robert\\_Murase](https://en.wikipedia.org/wiki/Robert_Murase)



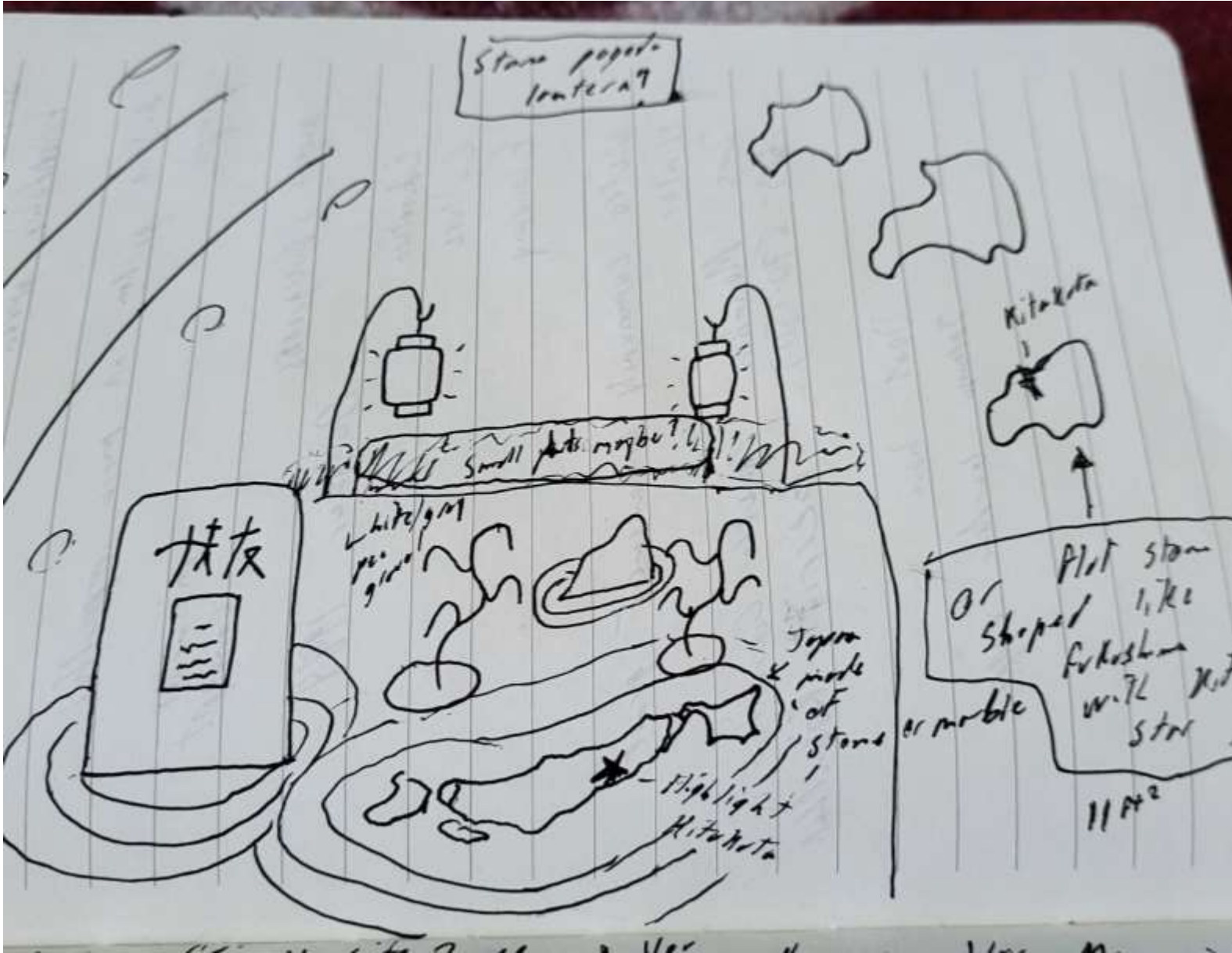
# THE ASK

Consider these projects as potential goals for 2024-2025:

- Project 1: Reimagining the landscaping around the Kitakata stone and adding more interpretive signage near the stone.
- Project 2: Conducting a feasibility study for a larger rock garden project in Town Center Park, Wilsonville Public Library or possibly Memorial Park near Murase Plaza.
- Gauge community interest for a larger project 2 concept.
- Leveraging grant funding in 2025.







# PROJECT ONE CONCEPT

- INCREASE SISTER CITY PROGRAM VISIBILITY WITHIN WILSONVILLE
- DRAW MORE ATTENTION TO KITAKATA
- BUILD THE NARRATIVE AND BEGIN CONNECTING THE DIFFERENT PARK ELEMENTS OF TOWN CENTER PARK

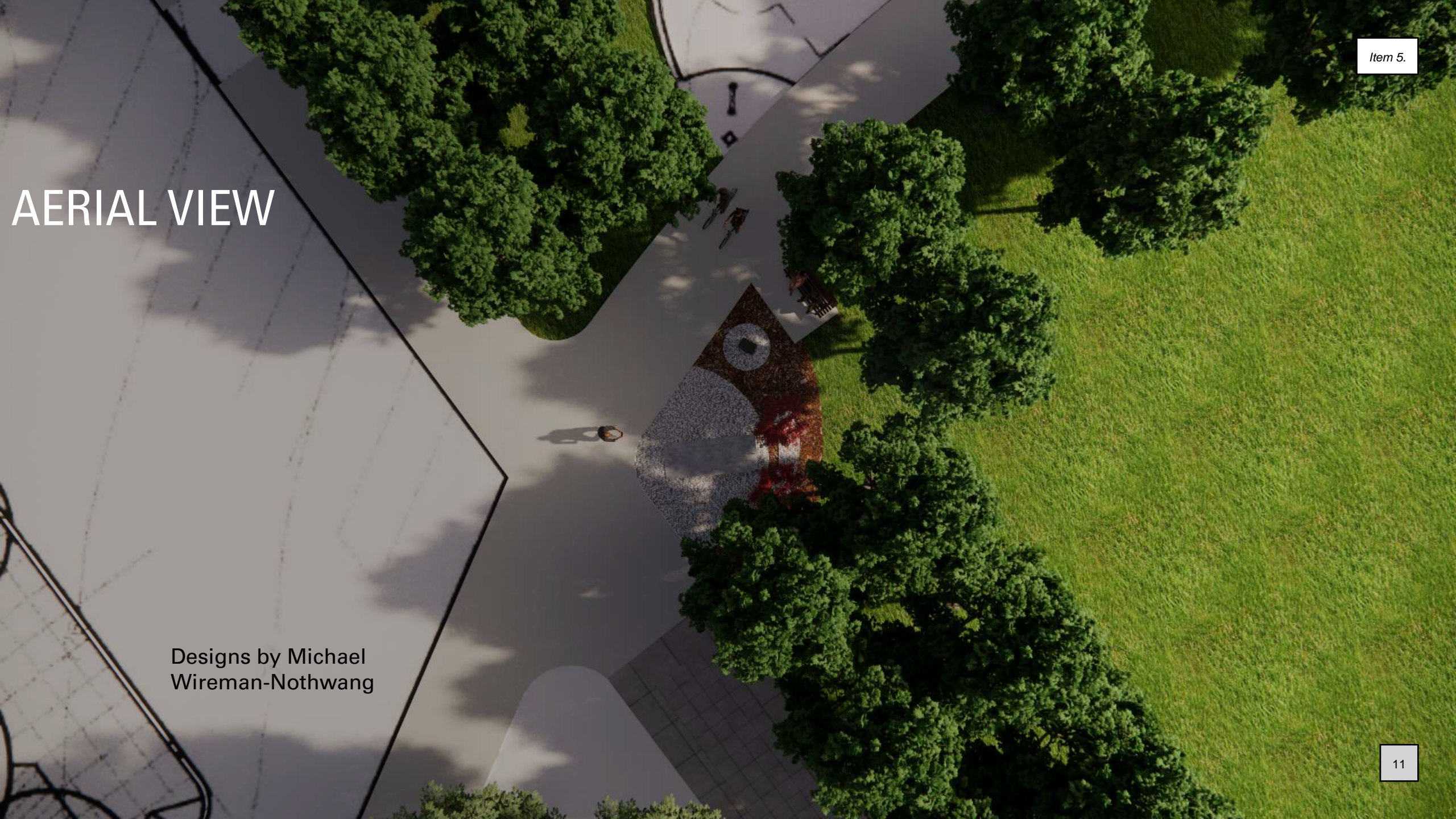


Designs by Michael  
Wireman-Nothwang



# AERIAL VIEW

Designs by Michael  
Wireman-Nothwang







Designs by Michael  
Wireman-Nothwang and  
Pink Cherry Blossoms by  
Aaron Reyna



ANY QUESTIONS REGARDING PROJECT ONE?

## PROJECT 2 CONCEPT

This corner to the left side of the Korean War Memorial was one idea for a larger phase two meditative garden project that we could seek grant funding for.

This site though beautiful may require more intentional community dialogue.

Additional considerations may include:

- Japanese and Korean nation to nation relations/history.
- Korean-American and Japanese-American intergenerational perspectives.

A different part of the park or alternate site may be the preferable option to avoid these historical layers.

Memorial Park near Murase Plaza or the Wilsonville Public Library could be potential alternate sites. More research on site location will be required.





# PROJECT 2 CONCEPT IN DEPTH

We can illustrate and better connect these different cultural and historical elements within Town Center Park by creating a meditative walk from the Kitakata stone to the pathways of War and Peace.

The walk illustrates the fragility & beauty of life and how there are always crossroads in life where we must choose a path. It also illustrates how people that our nation once considered our greatest enemies are now some of our closest allies, friends, neighbors and community members.



# POTENTIAL COMMUNITY PARTNER ENGAGEMENT IDEAS

- Kitakata, Japan counterparts
- Wilsonville Citizen input
- Wilsonville Parks and Recreation staff
- Wilsonville Planning Department staff
- Wilsonville City Council/Mayor
- Wilsonville Chamber of Commerce
- Local Businesses
- Korean War Memorial Foundation of Oregon
- Wilsonville Tourism Committee
- Japanese American Citizens League
- A Korean Community Organization?



# POTENTIAL NON-PROFIT PARTNERS

- Wilsonville Friends of the Library
- (WACC) Wilsonville Arts and Culture Council
- (WAIC) Wilsonville Alliance for Inclusive Community



# POTENTIAL GRANTS TO APPY TO:

- **Wilsonville-Metro Community Enhancement Program**
- **Wilsonville Community Opportunity Grant Program**
- **Wilsonville Community Tourism Grant Program**



# PROJECT ONE COSTS

## Estimated Costs in Detail

- \$6,000-7,000 cost estimate from contractor includes: digging down two inches to fill with gravel, moving existing landscaping, landscaping cloth barrier to hold gravel, placing two additional stones.
- \$100-200 for large basalt stone
- Pea gravel \$200-400
- \$600-1000 dark color contrast “absolute black granite” 1 inch and a quarter thick with laser engraving of Japan (Recommend having it bedded in concrete to prevent theft) and can laminate four inches thickness.
- Additional research on maintenance costs needed.

## Estimated Costs:

Landscaping contractor labor	\$7,000
Large basalt stone	\$200
Pea gravel	\$400
Laser engraved stone	\$1,000
Concrete	\$50?
Stone delivery fees?	\$100
<b>Total Estimated Cost:</b>	<b>8,750.00</b>

# PROJECT TWO COSTS

## Estimated Costs in Detail

- \$8,000-9,000 cost estimate from contractor includes: digging down two inches to fill with gravel, moving existing landscaping, landscaping cloth barrier to hold gravel, placing two additional stones.
- \$100-200 for large basalt stone x 2 stones
- Pea gravel \$400-600
- Two Japanese Maples \$200(Optional idea but irrigation and maintenance is a question for park staff)
- \$560-1,000 large column stone
- Additional research on maintenance costs needed.

## Estimated Costs:

Landscaping contractor labor	\$9,000
Two large basalt stones	\$400
Pea gravel	\$600
Large Column stone	\$1,000
Concrete	\$50-100?
Stone delivery fees?	\$100
Two Japanese Maples	\$200*
Stones for Path	\$400?
Phase 2 renderings	TBD
<b>Total Estimated Cost:</b>	<b>\$11,750.00</b>



# ADDITIONAL RESOURCES

[North American Japanese Garden Association](#)

[OSU Master Gardener Program](#) for Zen rock garden ideas/support/collaboration.

[Wilsonville garden club](#)

## Japanese Garden examples in Oregon:

[Ashland, Oregon Japanese Garden](#)

[Gresham, Oregon Japanese Garden](#)

[Portland, Oregon Japanese Garden](#)

[Japan Foundation New York](#)

[Portland Japanese American Citizens League](#)

[Oregon Korean War Memorial Foundation of Oregon](#)

[Japanese American History Museum of Oregon](#)

[Oregon Asian and Pacific Islander Organization \(APANO\)](#)

ANY QUESTIONS REGARDING PROJECT TWO?

## Parks and Recreation Meeting notes

Attendees: Kris Ammerman, Erica Behler, Aaron Reyna, Dustin Schull

4/4/2024

- Introductions

Aaron- Provided an overview of the Wilsonville Japanese rock garden project concept and the desire to increase the visibility of the Kitakata Sister City Program within the City of Wilsonville. Also brought up some of the existing issues with the current location of the Kitakata stone and its proximity to the Korean War Memorial.

### Discussion of rock garden potential sites:

**Town Center Park-** With the current redevelopment plans for the park stage and surrounding area this site does seem suitable for this project.

**Memorial Park-** We discussed several options:

- Near Murase Plaza- Dustin brought up potential issues with children climbing on structures if it was placed too close to the water feature.
- The lower section below Muraze Plaza near the oak trees and winding path to the Grove Shelter- Dustin brought up current noxious weed treatment that is currently underway and a second phase for an adjacent section that is in the works. He also discussed plans to connect a trail system to the park. Kris brought up future expansion plans for the path to 10ft (Part of a 5-to-10-year plan) and redevelopment of the grass hill amphitheater area. (This area could be possible but these future development plans would have to be taken into consideration.)
- Near the entrance to the Muraze Plaza close to existing garden area and shelter -Dustin site not ideal due to tree drip zone.
- Kris and Dustin- Suggested two future parking lot projects that we could incorporate this concept into the design. (There is no current timeline for implementation of these future parking lot projects.)

### Library grounds:

Parks and Recreation doesn't manage that area so we would need to connect with the Library Director and potentially Facilities.

Erica-Brought up a grassy knoll area adjacent to the library that is currently undeveloped.

Aaron-brought up the area between the library and the main road as another idea.

**Next Steps:**

- Debrief with Kitakata Board
- Reach out to Wilsonville Library Director
- Reach out to Wilsonville Planning Department
- Reach out to Wilsonville Tourism Committee
- Follow up on any other alternate site suggestions from Dustin or Kris if any.



### References Maps

Page 21 Memorial Park Master Plan Update May 2015

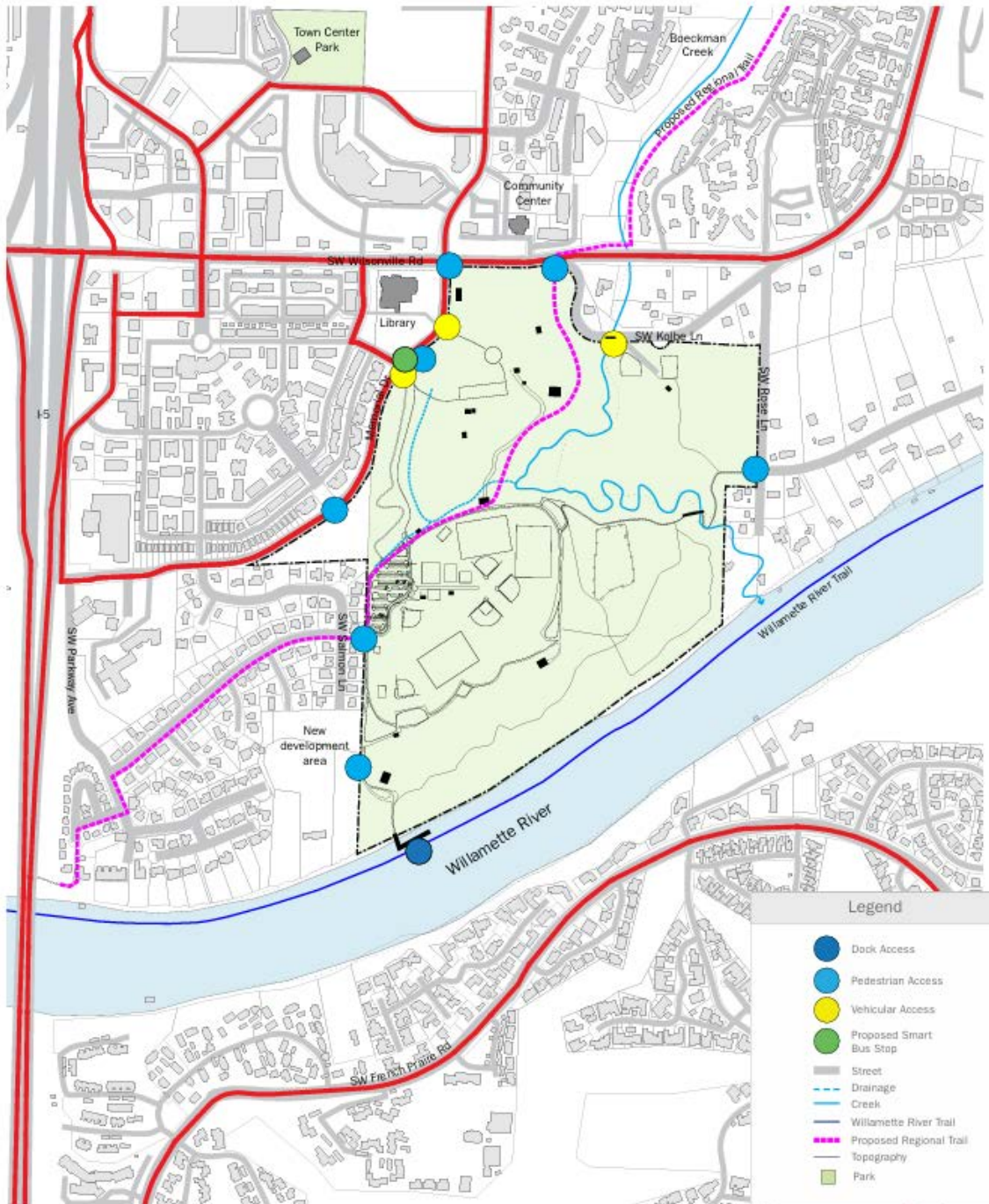


Figure 4 - CONTEXT ANALYSIS

The interface between Memorial Park and adjoining communities is important for providing safe and efficient access by different modes of transportation. The context analysis diagram highlights the existing types of access points and prominent circulation routes to and through the park.

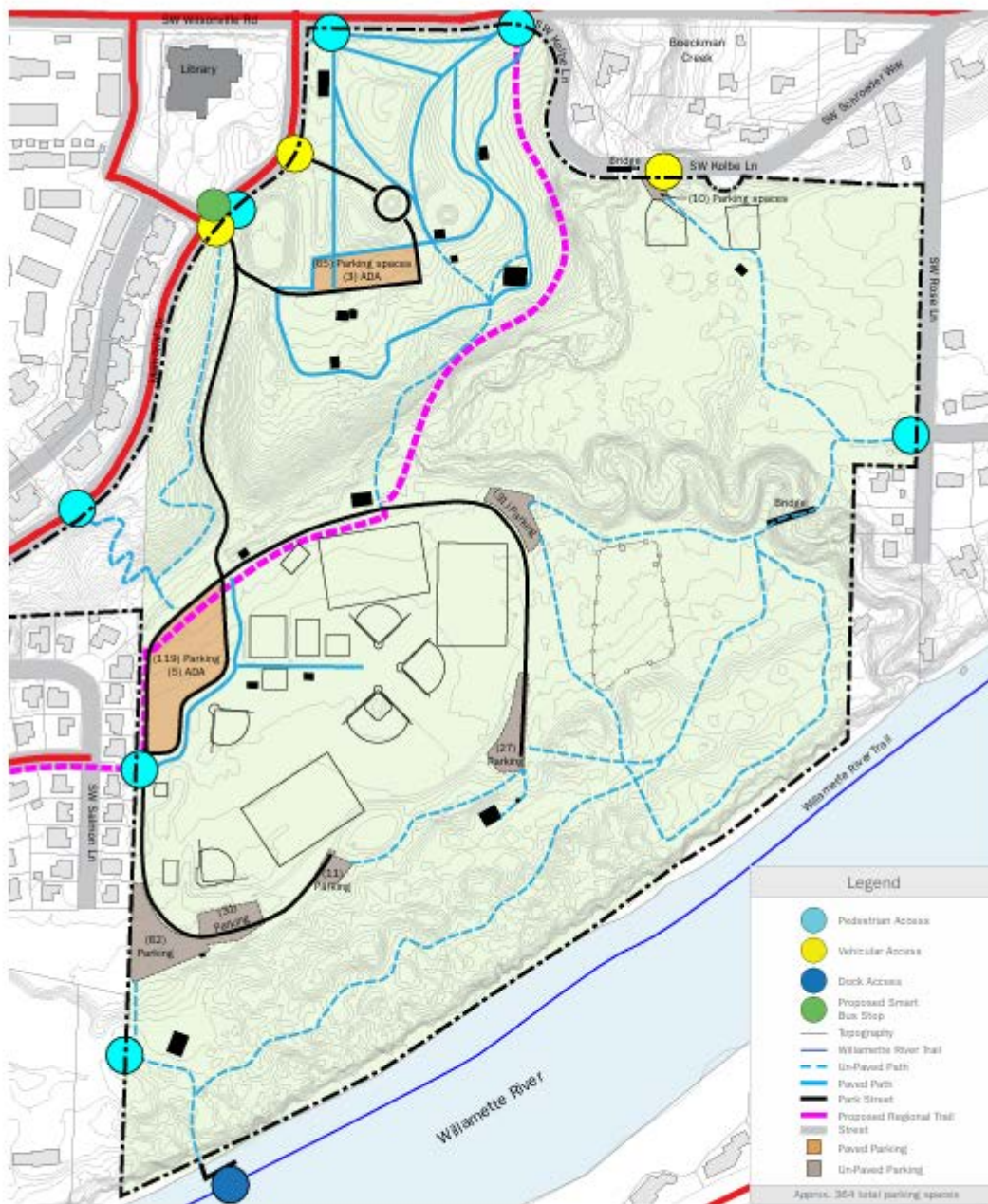


Figure 6 - CIRCULATION

Cohesive circulation throughout the park is important for safety, emergency access, user access, and way finding. The diagram maps existing locations and types of access, streets, paths, and trails. Parking lot locations and quantities of parking spaces are shown.



