

Kitakata Delegation

December 3-10, 2022



Background

- Wilsonville and Kitakata have shared a sister city relationship since 1988
- Student delegations (before the pandemic) were roughly every other year switching between Kitakata and Wilsonville students
- Adult delegations on special occasions
- Kitakata is located in Fukushima prefecture and is roughly 4.5 hours North of Tokyo. Kitakata is known for the ramen, sake, traditional storehouses and lacquerware.



Host family Info:

- 4 boys, 6 girls, 2 teachers, 1 travel agent
- Host expenses
- More than one student?
- Contact list
- Week day drop off and pick up (City Hall / High School)
- Detailed Itinerary
- Welcome breakfast and farewell dinner
- Take pictures!
- Host families weekends (Sunday, 12/4)
 - Sleeping arrangements
 - 2 Kitakata students of the same gender may share a room with separate beds
 - A Kitakata student may not share a room with a host sibling
 - A Kitakata student may use your child's room if you have alternate sleeping arrangements for your child



strongly believe that
the moment you decid
letter at your chosen
men, you'll become m
more to learn. My jo
over-ambitious
should transition
impulsive bail
it looks as if you

Dates: December 3 – 10

Destination: Wilsonville, Oregon

Dates & Itinerary

Sat. 12/3	Sun. 12/4	Mon. 12/5	Tues. 12/6	Wed. 12/7
<ul style="list-style-type: none"> • Arrival PDX 2:36pm • Host families pick up at Parks and Rec Admin ~3:30pm • Evening with host families 	<ul style="list-style-type: none"> • Day with host families • Organized Welcome Meal at McMenamins 	<ul style="list-style-type: none"> • Drop off at City Hall ~8am • Pick up at City Hall ~5pm 	<ul style="list-style-type: none"> • Drop off at City Hall at ~8am • Pick up at City Hall ~5pm 	<ul style="list-style-type: none"> • Drop off at City Hall ~7:45am • Pick up at CREST school ~5pm

Thurs. 12/8	Fri. 12/9	Sat. 12/10
<ul style="list-style-type: none"> • Drop off at City Hall ~7:45am • Pick up at City Hall ~9:30pm 	<ul style="list-style-type: none"> • Drop off at City Hall ~8am • Pick up City Hall ~5pm 	<ul style="list-style-type: none"> • Departure PDX • Drop off at City Hall for shuttle to airport at 12:30pm



What to Expect:

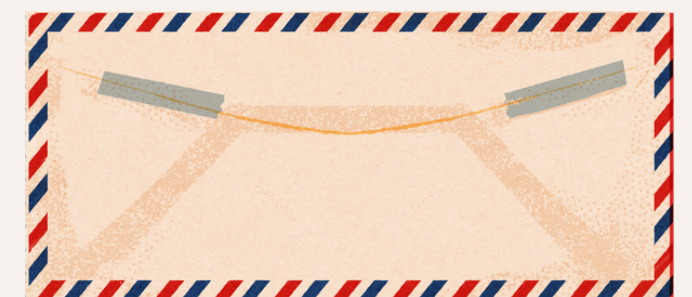
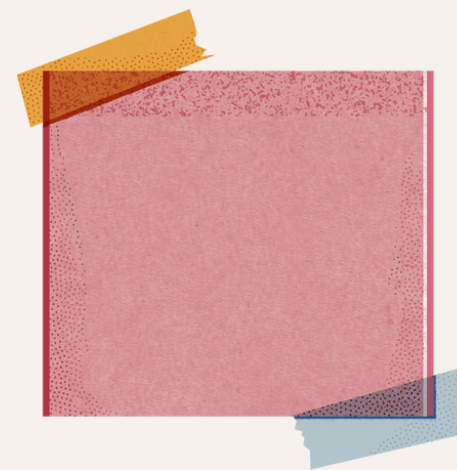


- Students will speak some English, but may be shy to communicate
- Students may use translators on their phone to communicate
- Home stays are often the most remembered part of students' travel experience
- Show students how to use the various aspects of your home – they may be too shy to ask questions
- Traditional American food will likely be new to them
- Keep your routines the same
- Lead by example



Next Steps

- If interested in being a host family, please confirm your interest by completing the host family application and emailing board staff liaison Erica Behler at behler@ci.wilsonville.or.us by October 17!
- You will be contacted via email the week of October 17 to set up a time for a home visit to ensure your home is suitable for an exchange student and to confirm information in application is correct.





*quite a session, I'll
be temporarily*

AIRLINE TICKET

DATE AND TIME: GATE SEAT FLIGHT
28 A62 B-2366

NAME:

FROM

TO

Questions?