



Urban Forestry Commission

Whitewater Municipal Building Community Room,
312 West Whitewater St., Whitewater, WI 53190
*In Person and Virtual

Monday, September 25, 2023 - 4:30 PM

Citizens are welcome (and encouraged) to join our webinar via computer, smart phone, or telephone.
Citizen participation is welcome during topic discussion periods.

Urban Forestry Commission
Sep 25, 2023, 4:30 – 6:00 PM (America/Chicago)

Please join my meeting from your computer, tablet or smartphone.

<https://meet.goto.com/294006101>

You can also dial in using your phone.

Access Code: 294-006-101

United States: +1 (224) 501-3412

Get the app now and be ready when your first meeting starts:

<https://meet.goto.com/install>

Please note that although every effort will be made to provide for virtual participation, unforeseen technical difficulties may prevent this, in which case the meeting may still proceed as long as there is a quorum. Should you wish to make a comment in this situation, you are welcome to call this number: (262) 473-0108.

AGENDA

CALL TO ORDER

ROLL CALL

CONSENT AGENDA

Items on the Consent Agenda will be approved together unless any committee member requests that an item be removed for individual consideration.

1. August 28, 2023 Minutes

HEARING OF CITIZEN COMMENTS

No formal Committee action will be taken during this meeting although issues raised may become a part of a future agenda. Participants are allotted a three minute speaking period. Specific items listed on the agenda may not be discussed at this time; however, citizens are invited to speak to those specific issues at the time the Committee discusses that particular item.

To make a comment during this period, or during any agenda item: On a computer or handheld device, locate the controls on your computer to raise your hand. You may need to move your mouse to see these controls. On a traditional telephone, dial *6 to unmute your phone and dial *9 to raise your hand.

CONSIDERATIONS / DISCUSSIONS / REPORTS

- [2.](#) Discussion of the Starin Park Detention Pond

TREASURER'S REPORT

STAFF REPORT

3. Arboretum-Tree Reimbursement Update.
4. Spongy Moss update
5. Tree City Application Update
6. Tree Growth Update
7. Territorial Oak update
8. TREE CITY
 - 2024 Tree Order
 - Update DNR Grant Process
 - Update on Pulse Welcome Center Signs
 - Generac Arboretum volunteers
9. BIRD CITY
 - Discussion on 2023 Application
 - Swift Night Out Report
 - Purple Martin House Report

FUTURE AGENDA ITEMS

10. Milkweed Protection/Planting
11. Protection of oaks from Library expansion.

ADJOURNMENT

A quorum of the Common Council may be present. This notice is given to inform the public that no formal action will be taken at this meeting.

Anyone requiring special arrangements is asked to call the Office of the City Manager / City Clerk (262-473-0102) at least 72 hours prior to the meeting.

**City of Whitewater Urban Forestry Commission
August 28, 2023 Minutes
Community Room - 2nd Floor - 4:30 p.m. In Person and Virtual
312 W. Whitewater St., Whitewater, WI 53190**

Roll Call: Present: Stone, Alt, Leaver, Taylor, Chandler, and Brockman. Absent: Tevis and Stanek.

Called to Order: By Vice Chair Alt at 4:03 p.m.

Hearing of Citizens Comments: None

Approval of Agenda: Taylor/Stone Approved

Approval of July 24, 2023 Meeting Minutes: Leaver/Stone. Approved

Treasurer's Report: (Leaver) Still \$1,049-no action since last meeting. Haven't heard from City regarding reimbursements for Stanek, Chandler/Neis reimbursement status?

Staff Report: (Beckman) Storm clean up regarding city work from July 29th through August 4th

301 Man Hrs	\$12,994.17
81 Hrs Chipper and truck	\$2,812.32
50.5 Hrs Pick up	\$834.26
56 Hrs Dump Truck	\$1649.76
3 Hrs Bucket/boom Truck	\$190.44
4 Hrs Wheel Loader	\$302.00
32 Hrs Sweeper Truck	\$3,251.20
30.5 Hrs Chain Saw	\$241.56
Total	\$22,275.71

Recognition by Commission of City's Cleanup Efforts and brush services.

Four trees to be removed due to storm damage after concrete/asphalt work.

Discussion and handout regarding tree diseases and trees to avoid in future plantings. Handout is attached.

Arboretum Update: Interpretive signage for Welcome Center has been ordered, paid for and waiting for delivery Tree inventory has been completed, just need to input numbers to comply with grant requirements. City is watering 1x 2 times per week. Just about everything planted for

the arboretum is surviving. It's a big investment the City is making in efforts to protect the investment of plantings.

Weeding in beds is an issue and spraying needs to be done. If 5-8 people volunteer then will take a day to go through all beds.

Tree City/Tree Talk: Territorial Tree condition report: Bid requested, and waiting back. A difficult job; crane potentially needed, large job.

Bird City/Bird Talk: Purple Martin nests update Chandler: 103 Martins fledged from 2 City Bird Houses and three privately owned houses. Continue membership in Purple Martin Association. Motion to renew at \$35.00. Taylor and Stone; Passed unanimously.

Swift Night Out updates (Stanek and Chandler); August 450 birds counted. Counting at middle school chimney. Next September 1 and September 9 sessions beginning at sunset to conclusion

Items For Future Discussion: 1) Milkweed protection/planting. 2) Protection of oaks from library expansion.

Adjournment: 5:29 p.m.

Next Meeting: September 25, 2023

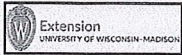
ISA

- Avoid these plants -

2023 WAA Summer Conference

New and Emerging
Tree and Shrub Diseases

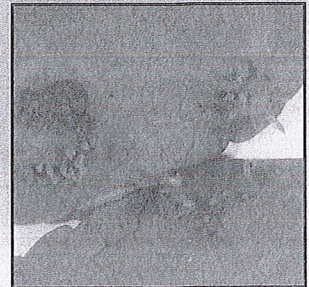
Brian D. Hudelson
Department of Plant Pathology
University of Wisconsin-Madison/Extension

New and Emerging Tree/Shrub Diseases
Lipstick Rust (Japanese Apple Rust)

- Pathogen: *Gymnosporangium yamadae*
- Hosts
 - Junipers
 - *Juniperus chinensis*
 - *Juniperus chinensis* var. *procumbens*
 - *Juniperus chinensis* var. *sargentii*
 - *Juniperus squamata*

New and Emerging Tree/Shrub Diseases
Lipstick Rust (Japanese Apple Rust)

- Hosts
 - *Malus* spp.
 - *M. asiatica*
 - *M. halliana*
 - *M. platycarpa*
 - *M. pumila* var. *domestica*
 - *M. spontanea*
 - *M. toringo*
 - *M. yunnanensis*
 - *M. baccata*
 - *M. micromalus*
 - *M. prunifolia*
 - *M. scheideckeri*
 - *M. theifera*
 - *M. transitoria*
- Favorable environment: Wet weather

New and Emerging Tree/Shrub Diseases
Lipstick Rust (Japanese Apple Rust)

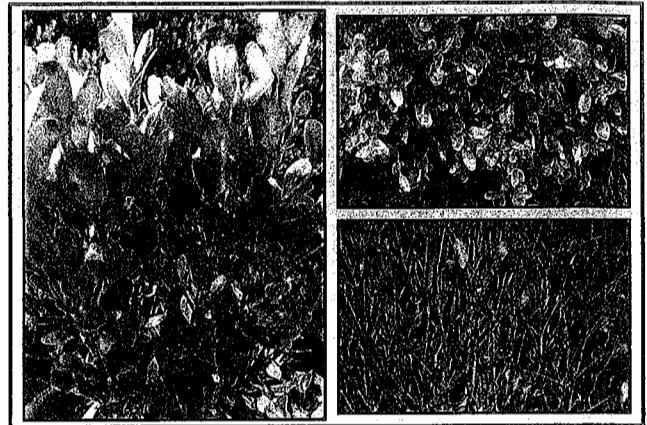
- Control
 - Grow only junipers or rosaceous hosts
 - Carefully inspect junipers prior to purchase
 - Remove galls
 - Decontaminate pruning tools
(70% alcohol, disinfectants, bleach)

New and Emerging Tree/Shrub Diseases
Lipstick Rust (Japanese Apple Rust)

- Control
 - Destroy infected materials
 - Burn (where allowed)
 - Deep bury
 - DO NOT use fungicides
 - Contact the PDDC if you suspect you have seen this disease

New and Emerging Tree/Shrub Diseases Boxwood Blight

- Pathogen
 - *Calonectria pseudonaviculata*
 - *Cylindrocladium pseudonaviculatum*
(*Cylindrocladium buxicola*)
- Hosts
 - Boxwood
 - Pachysandra
- Favorable Environment: Cool, wet weather



New and Emerging Tree/Shrub Diseases Boxwood Blight

- Control
 - Be cautious about holiday wreaths
 - Grow shrubs other than boxwood
 - Buy from a reputable supplier
 - Buy locally produced boxwood

New and Emerging Tree/Shrub Diseases Boxwood Blight

- Control
 - Grow resistant varieties
 - Hybrid boxwood
 - 'Green Gem'
 - 'Karzgreen' (Green Ice®)
 - Japanese littleleaf boxwood
 - 'Jim Stauffer'
 - 'Little Missy'
 - 'Winter Gem'

New and Emerging Tree/Shrub Diseases Boxwood Blight

- Control
 - Grow resistant varieties
 - Korean littleleaf boxwood
 - 'Eseles' (Wedding Ring®)
 - 'Franklin's Gem'
 - 'Pincushion'
 - 'Wee Willie'
 - 'Winter Beauty'
 - 'Wintergreen'

New and Emerging Tree/Shrub Diseases Boxwood Blight

- Control
 - DO NOT replant in an area where boxwood blight has been a problem
 - Avoid symptomatic plants
 - Keep new plants isolated
 - Space plants far apart
 - DO NOT overhead water

New and Emerging Tree/Shrub Diseases Boxwood Blight

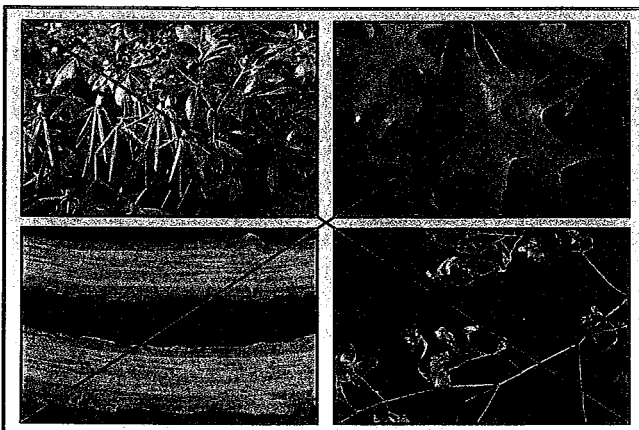
- **Control**
 - Prune out diseased branches
 - Decontaminate (70% alcohol, commercial disinfectants)
 - Remove and destroy infected plants
 - Burn (where allowed)
 - Deep bury (two feet)/Double bag and landfill
 - DO NOT compost

New and Emerging Tree/Shrub Diseases Boxwood Blight

- **Control**
 - Use fungicides to prevent infections
 - Chlorothalonil (alone or with propiconazole or thiophanate-methyl), fludioxonil, metconazole, tebuconazole
 - Alternate active ingredients (FRAC codes)
 - Apply at 7 day intervals
 - Contact the PDDC if you suspect you have seen this disease

New and Emerging Tree/Shrub Diseases Ramorum Blight (Sudden Oak Death)

- **Pathogen:** *Phytophthora ramorum*
- **Hosts**
 - A wide range of woody and herbaceous ornamentals
 - Rhododendrons/Azaleas
 - Roses ('Double Red Knockout')
 - Viburnums
 - Lilacs
 - Oaks



New and Emerging Tree/Shrub Diseases Ramorum Blight (Sudden Oak Death)

- **Control**
 - Buy woody ornamentals from a reputable source
 - Inspect plants prior to purchase for symptoms of sudden oak death
 - Keep new plants isolated from established plants

New and Emerging Tree/Shrub Diseases Ramorum Blight (Sudden Oak Death)

- Control
 - Remove and destroy infected plants
 - Decontaminate (70% alcohol, bleach, commercial disinfectants)
 - Contact the PDDC if you believe you have seen this disease

New and Emerging Tree/Shrub Diseases Beech Leaf Disease

- Pathogen: *Litylenchus crenatae* subsp. *mccannii*
- Hosts
 - American beech
 - European beech
 - Asian beech
- Favorable environment: None



New and Emerging Tree/Shrub Diseases Beech Leaf Disease

- Control
 - Limit movement of beech wood
 - Avoid symptomatic nursery stock
 - Remove affected trees
 - Hope for eventual resistant varieties
 - Contact the PDDC if you believe you have seen this disease

only a few Beech in town

New and Emerging Tree/Shrub Diseases Thousand Cankers Disease

- Pathogen: *Geosmithia morbida*
- Hosts
 - Black walnut
 - Other walnuts
- Favorable Environment: None
- Transmission
 - Walnut twig beetle (*Pityophthorus juglandis*)



New and Emerging Tree/Shrub Diseases Thousand Cankers Disease

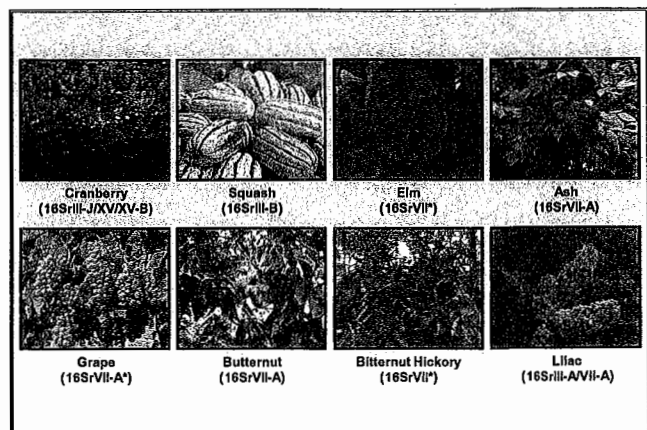
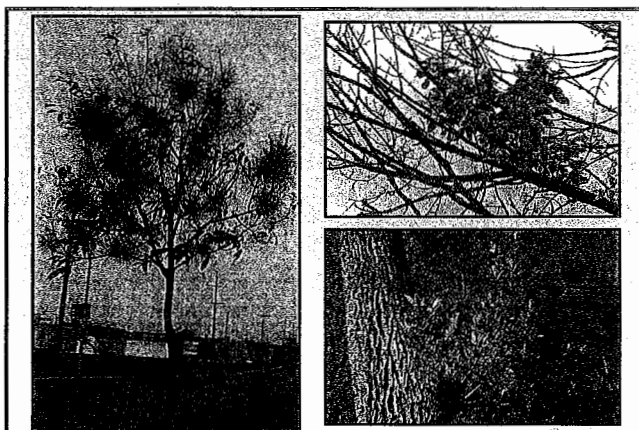
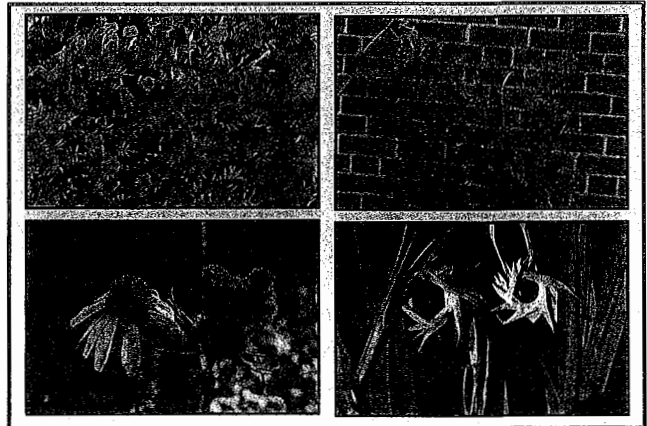
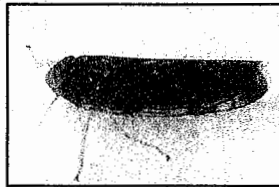
- **Control**
 - DO NOT transport walnut wood/products from areas known to have the disease
 - Remove and destroy affected trees (burn)
 - No effective fungicide strategies known
 - No effective insecticide strategies known
 - Contact the PDDC if you believe you have seen this disease

New and Emerging Tree/Shrub Diseases Phytoplasma Diseases

- **Examples**
 - Aster yellows
 - Ash yellows
- **Pathogens: Miscellaneous phytoplasmas**
- **Hosts**
 - Many herbaceous plants (aster yellows)
 - Ash, lilac (ash yellows)
 - “The more you look, the more you find.”

New and Emerging Tree/Shrub Diseases Phytoplasma Diseases

- **Favorable environment: None**
- **Transmission: Leafhoppers**



New and Emerging Tree/Shrub Diseases Phytoplasma Diseases

- **Control**
 - Remove infected plants
 - Destroy infected materials
 - Compost
 - Bury
 - Burn (where allowed)
 - Avoid growing susceptible plants
 - Use insecticides for leafhopper control (?)

New and Emerging Tree/Shrub Diseases Where to Go for Help

Plant Disease Diagnostics Clinic
Department of Plant Pathology
University of Wisconsin-Madison
1630 Linden Drive
Madison, WI 53706-1598
(608) 262-2863
pddc@wisc.edu

<https://pddc.wisc.edu>

Follow on Facebook, Twitter, YouTube: @UWPDDC
Subscribe to the PDDC Listserv: UWPDDCLearn

New and Emerging Tree/Shrub Diseases Need CEUs?

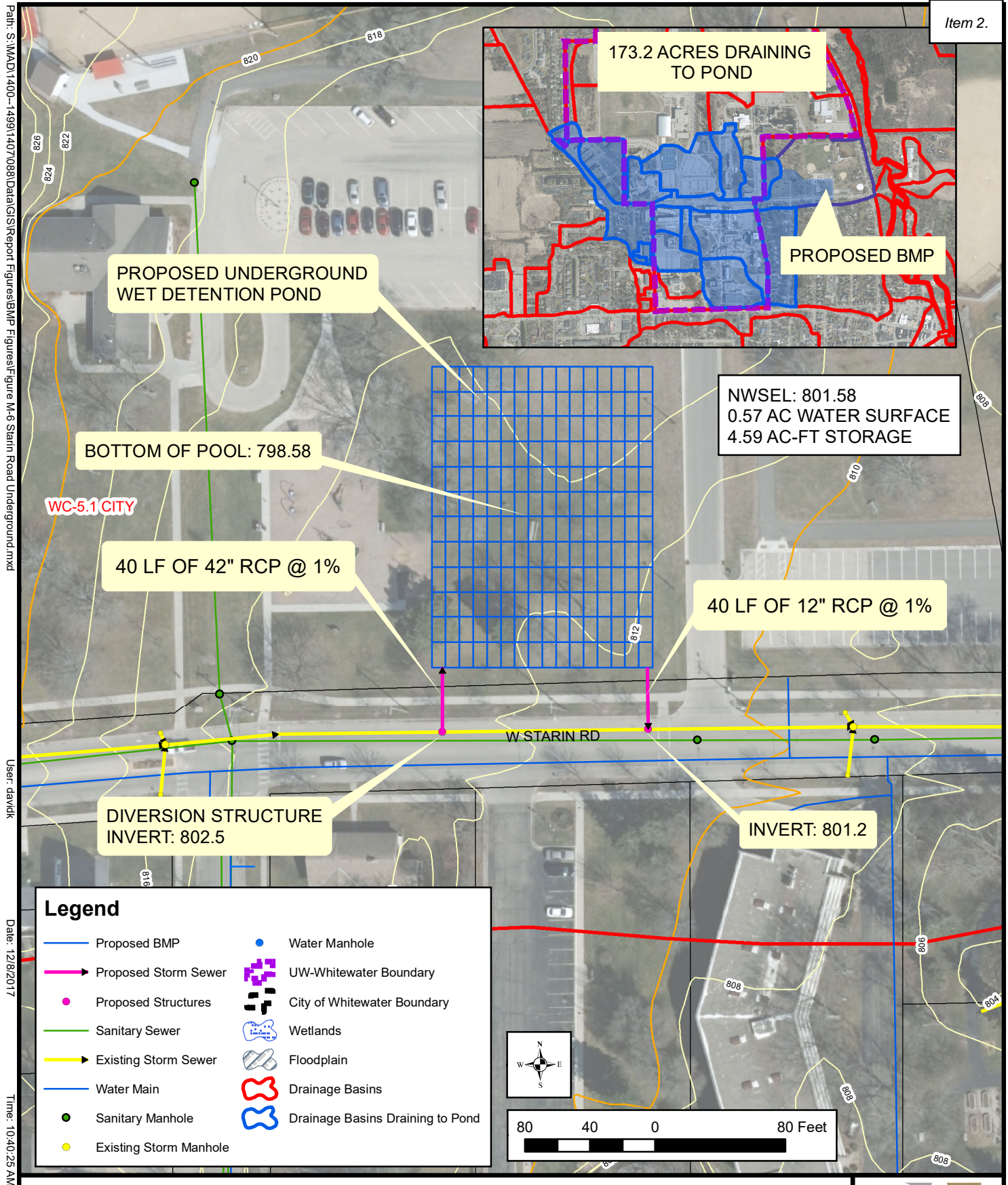


New and Emerging Tree and Shrub Diseases

Brian Hudelson

CEU Code: WI – 23 – 080

CA: 1 BCMA-S: 1



**STARIN ROAD UNDERGROUND WET
DETENTION POND (WC-5.1 CITY)
TMDL STORMWATER PLAN
CITY OF WHITEWATER
WALWORTH AND JEFFERSON COUNTIES, WISCONSIN**