



Urban Forestry Commission Meeting

Cravath Lakefront room 2nd floor 312 West
Whitewater Str, Whitewater, WI, 53190 *In Person
and Virtual

Monday, February 02, 2026 - 5:30 PM

Citizens are welcome (and encouraged) to join our webinar via computer, smart phone, or telephone.
Citizen participation is welcome during topic discussion periods.

<https://teams.microsoft.com/meet/28157411477414?p=GAEYN82QyzBrNmCEAO>

Please note that although every effort will be made to provide for virtual participation, unforeseen technical difficulties may prevent this, in which case the meeting may still proceed as long as there is a quorum. Should you wish to make a comment in this situation, you are welcome to call this number: (262) 473-0108.

AGENDA

CALL TO ORDER

ROLL CALL

APPROVAL OF AGENDA

A committee member can choose to remove an item from the agenda or rearrange its order; however, introducing new items to the agenda is not allowed. Any proposed changes require a motion, a second, and approval from the Committee to be implemented. The agenda shall be approved at each meeting even if no changes are being made at that meeting.

CONSENT AGENDA

Items on the Consent Agenda will be approved together unless any committee member requests that an item be removed for individual consideration.

1. Urban Forestry Commission meeting minutes from September 29, 2025.

CONSIDERATIONS / DISCUSSIONS / REPORTS

2. Discussion on tree health concerns along Jefferson Street and justification for planned removals.
3. Discussion and possible action on Whitewater Unified School District landscape plan for the Whitewater High School improvement project.
4. Discussion and possible action on Whitewater Unified School District landscape plan for the Whitewater Middle School improvement project.
5. Discussion and possible action on an education piece for the Whitewater Banner why the Bradford Pear tree should not be used in plantings and the environmental impact of planting them.
6. Discussion and possible action on an education session at the Arboretum in 2026.
7. Discussion on Whitewater Community Foundation grant award and potential signage to purchase with the funds.

8. Discussion on what to do with the wood from the Territorial Oak.
9. Discussion and possible action on a spring clean up day at the Arboretum.
10. Discussion and possible action on installation of Monarch Waystation sign at Clay Street Nature Park.

BIRD CITY

11. Discussion and possible action on contracting Fellow Mortals to conduct an educational program at the 2026 Swift Night Out for \$100.00.
12. Discussion on Bird of the Year Contest.

FUTURE AGENDA ITEMS

ADJOURNMENT

A quorum of the Common Council may be present. This notice is given to inform the public that no formal action will be taken at this meeting.

Anyone requiring special arrangements is asked to call the Office of the City Manager / City Clerk (262-473-0102) at least 72 hours prior to the meeting.



Urban Forestry Commission Item 1.

Cravath Lakefront room 2nd floor 312 West
Whitewater Str, Whitewater, WI, 53190 *In Person
and Virtual

Monday, September 29, 2025 - 5:30 PM

Citizens are welcome (and encouraged) to join our webinar via computer, smart phone, or telephone.
Citizen participation is welcome during topic discussion periods.

Please note that although every effort will be made to provide for virtual participation, unforeseen technical difficulties may prevent this, in which case the meeting may still proceed as long as there is a quorum. Should you wish to make a comment in this situation, you are welcome to call this number: (262) 473-0108.

1. Topic: Urban Forestry Commission
Time: Sep 29, 2025 05:30 PM Central Time (US and Canada)
Join Zoom Meeting
<https://us02web.zoom.us/j/89592911936?pwd=1wZ4pxV2jTv6NCSjH4ZooxLJnW0ObW.1>

Meeting ID: 895 9291 1936
Passcode: 004861

One tap mobile
+16469313860,,89592911936#,,,,*004861# US
+19292056099,,89592911936#,,,,*004861# US (New York)

Join instructions
https://us02web.zoom.us/join/89592911936/invitations?signature=L4hFmDvIN404KQSva3ad6bMq7y5bOew5u_P6ryeL9GY

AGENDA

CALL TO ORDER

Called to order at 5:30pm by Chairperson Nick Alt.

ROLL CALL

Present: Chairperson Nick Alt, Board Member Sherry Stanek, Board Member Joshua Kapfer, Board Member Marjorie Stoneman, Board Member Bill Chandler, Board Member Kerry Katovich.

Absent: None

Others Present: City Staff Kevin Boehm, City Forester Andrew Beckman.

APPROVAL OF AGENDA

A committee member can choose to remove an item from the agenda or rearrange its order; however, introducing new items to the agenda is not allowed. Any proposed changes require a motion, a second,

and approval from the Committee to be implemented. The agenda shall be approved at each meeting even if no changes are being made at that meeting.

Motion made by Board Member Kapfer, Seconded by Board Member Stoneman to approve the agenda.

Voting Yea: Board Member Kapfer, Board Member Katovich, Board Member Stoneman, Board Member Chandler, Board Member Stanek, Chairperson Alt.

CONSENT AGENDA

Items on the Consent Agenda will be approved together unless any committee member requests that an item be removed for individual consideration.

2. Urban Forestry Commission meeting minutes from August 25, 2025

Motion made by Board Member Stoneman, Seconded by Board member Katovich to approve minutes as presented.

Voting Yea: Board Member Kapfer, Board Member Katovich, Board Member Stoneman, Board Member Chandler, Board Member Stanek, Chairperson Alt.

HEARING OF CITIZEN COMMENTS

No formal Committee action will be taken during this meeting although issues raised may become a part of a future agenda. Participants are allotted a three minute speaking period. Specific items listed on the agenda may not be discussed at this time; however, citizens are invited to speak to those specific issues at the time the Committee discusses that particular item.

To make a comment during this period, or during any agenda item: On a computer or handheld device, locate the controls on your computer to raise your hand. You may need to move your mouse to see these controls. On a traditional telephone, dial *6 to unmute your phone and dial *9 to raise your hand.

Discussion was had with the students present about what an Urban Forest is and tree diversity by Alt, Chandler and Stanek.

TREASURER REPORT

3. Treasurers Report

Boehm gave an update on the fund balance available to the Urban Forestry Commission with a total available of \$4,722.51.

Motion made by Board Member Chandler, Seconded by Board member Katovich to approve the treasurers report as presented.

Voting Yea: Board Member Kapfer, Board Member Katovich, Board Member Stoneman, Board Member Chandler, Board Member Stanek, Chairperson Alt.

CONSIDERATIONS / DISCUSSIONS / REPORTS

4. Discussion and possible action on moving day of week for future meetings, and frequency of meetings.

Boehm asked for discussion on moving the meeting date from the last Monday of the month due to network updates held on that date every month.

Motion made by Board Member Stanek, Seconded by Board member Kapfer to change the meeting night to the fourth Tuesday of the month at 5:30pm.

Voting Nay: Board Member Kapfer, Board Member Katovich, Board Member Stoneman, Board Member Chandler, Board Member Stanek, Chairperson Alt. Motion Failed

Motion made by Board Member Chandler, Seconded by Board member Stanek to change the meeting night to the first Monday of the month at 5:30pm quarterly or as needed.

Voting Aye: Board Member Kapfer, Board Member Katovich, Board Member Stoneman, Board Member Chandler, Board Member Stanek, Chairperson Alt. Motion passed.

Further discussion was had on frequency of meetings moving forward. It was decided to have meetings in February, May, August and November or as needed.

5. Discussion and possible action on an education piece for the Whitewater Banner why the Bradford pear should not be used in plantings and the environmental impact of planting them.

Alt gave a brief explanation to the students present. Kapfer gave information that the student he reached out did not respond. He will follow up.

6. Discussion and possible action on education session at the Arboretum.

No action has been taken since the last meeting. Alt and Stanek to follow up.

7. Discussion and possible action on funding ideas for the Arboretum.

No action has been taken since the last meeting. Stanek will look into grants. Fundraising will be used for signage, tree ID.

8. Discussion and possible action on what to do with wood from Territorial Oak.

Stanek will continue to work with Russ Walton.

BIRD CITY

9. Update on Bird City.

Chandler gave an update on Swift Night Out and the overall success of the event. Saturday August 29th will be the night in 2026 starting at 7pm. He gave an update of the Lake Geneva event. Fellow Mortals of Lake Geneva will be solicited to attend the event and give a wildlife presentation for \$100.00, the school district has been notified of the event and an indoor location at the school has been requested. Chandler and Stanek worked with Boehm to update the Urban Forestry pages on the City Website.

FUTURE AGENDA ITEMS

- Potential Bird of the Year contest.

ADJOURNMENT

Meeting was adjourned at 6:28pm.

A quorum of the Common Council may be present. This notice is given to inform the public that no formal action will be taken at this meeting.

Anyone requiring special arrangements is asked to call the Office of the City Manager / City Clerk (262-473-0102) at least 72 hours prior to the meeting.

JEFFERSON ST TREES

A glimpse of health







Item 2.



Item 2.



Item 2.



Item 2.







Item 2.







Item 2.



Item 2.







Item 2.







Item 2.





Item 2.

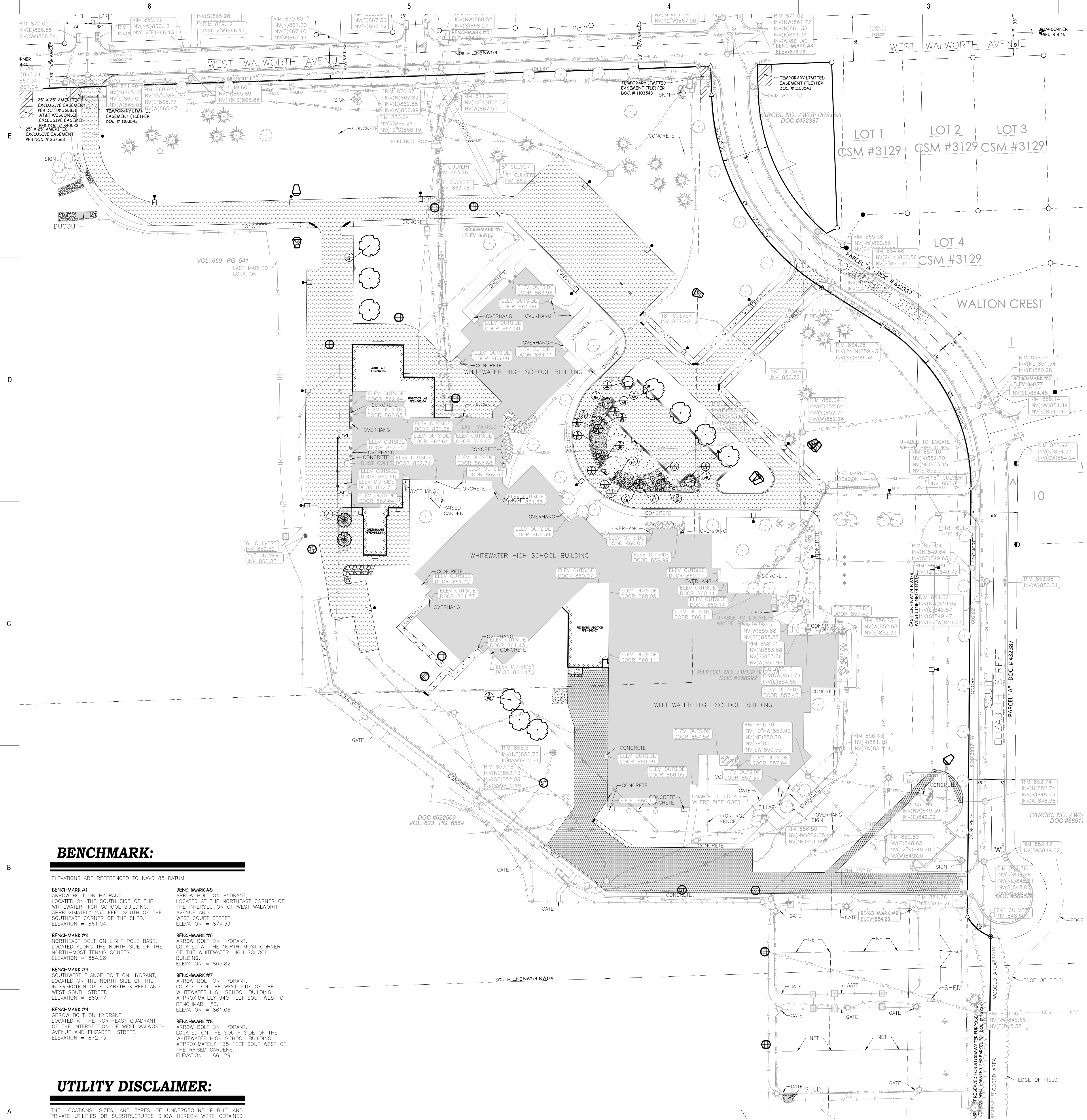


Item 2.



Item 2.





BENCHMARK:

ELEVATIONS ARE REFERENCED TO NAVD 88 DATUM.

- BENCHMARK #1**
ARROW BOLT ON HYDRANT,
LOCATED ON THE SOUTH SIDE OF THE
WHITWATER HIGH SCHOOL BUILDING,
APPROXIMATELY 235 FEET SOUTH OF THE
SOUTHEAST CORNER OF THE SHED.
ELEVATION = 861.04
- BENCHMARK #2**
NORTHEAST BOLT ON LIGHT POLE BASE,
LOCATED ALONG THE NORTH SIDE OF THE
NORTH-MOST TENNIS COURTS.
ELEVATION = 864.28
- BENCHMARK #3**
SOUTHWEST FLANGE BOLT ON HYDRANT,
LOCATED ON THE NORTH SIDE OF THE
WHITWATER HIGH SCHOOL BUILDING,
APPROXIMATELY 940 FEET SOUTHWEST OF
BENCHMARK #6.
ELEVATION = 861.06
- BENCHMARK #4**
ARROW BOLT ON HYDRANT,
LOCATED AT THE NORTHEAST QUADRANT
OF THE INTERSECTION OF WEST WALWORTH
AVENUE AND ELIZABETH STREET.
ELEVATION = 872.73
- BENCHMARK #5**
ARROW BOLT ON HYDRANT,
LOCATED AT THE NORTHEAST CORNER OF
THE INTERSECTION OF WEST WALWORTH
AVENUE AND WEST COURT STREET.
ELEVATION = 874.39
- BENCHMARK #6**
ARROW BOLT ON HYDRANT,
LOCATED ALONG THE NORTH SIDE OF THE
NORTH-MOST CORNER OF THE WHITWATER HIGH SCHOOL
BUILDING.
ELEVATION = 865.82
- BENCHMARK #7**
ARROW BOLT ON HYDRANT,
LOCATED ON THE WEST SIDE OF THE
WHITWATER HIGH SCHOOL BUILDING,
APPROXIMATELY 940 FEET SOUTHWEST OF
BENCHMARK #6.
ELEVATION = 861.06
- BENCHMARK #8**
ARROW BOLT ON HYDRANT,
LOCATED ON THE SOUTH SIDE OF THE
WHITWATER HIGH SCHOOL BUILDING,
APPROXIMATELY 135 FEET SOUTHWEST OF
THE RAISED GARDENS.
ELEVATION = 861.29

UTILITY DISCLAIMER:

THE LOCATIONS, SIZES, AND TYPES OF UNDERGROUND PUBLIC AND PRIVATE UTILITIES OR SUBSTRUCTURES SHOWN HEREON WERE OBTAINED FROM VISUAL INSPECTION, FIELD MEASUREMENTS, AND/OR AS-BUILT PLANS. SANITARY SEWER AND STORM SEWER PIPE SIZES, INVERTS, DIRECTION, AND LOCATIONS BETWEEN MANHOLES ARE SUPPLEMENTED BY AS-BUILT PLANS AND/OR ESTIMATED BASED ON FIELD OBSERVATIONS. PRIOR TO CONSTRUCTION IN THE VICINITY OF ANY UTILITIES SHOWN HEREON, IT IS RECOMMENDED THAT THE LOCATIONS, DEPTHS, AND SIZES BE FIELD VERIFIED. THE LOCATIONS SHOWN HEREON ARE ONLY APPROXIMATE, WITH POSSIBILITY THAT ADDITIONAL UTILITY LINES NOT DISCOVERED, OR MARKED, DURING THE SEARCH OF RECORDS AND THE FIELD SURVEY MAY EXIST. ANY CONTRACTOR USING THE INFORMATION SHOWN HEREON IS HEREBY FOREWARNED THAT ANY EXCAVATION UPON THIS SITE MAY RESULT IN THE DISCOVERY OF ADDITIONAL UNDERGROUND UTILITIES NOT SHOWN HEREON. IN GENERAL, UNDERGROUND UTILITY LOCATIONS ARE SHOWN FROM UTILITY MARKINGS, BY OTHERS, AND/OR AS-BUILT PLANS, PROVIDED BY OTHERS. POINT OF BEGINNING MAKES NO WARRANTY OF ANY KIND, EXPRESS OR IMPLIED, WITH RESPECT TO THE EXISTING UTILITIES SHOWN HEREON, AND BELIEVES THAT THE INFORMATION CONTAINED HEREIN IS RELIABLE AND GENERALLY ACCURATE FOR THE PURPOSE INTENDED.

GENERAL NOTES:

- CONTACT DIGGER'S HOTLINE 5 WORKING DAYS PRIOR TO THE START OF DEMOLITION/CONSTRUCTION.
- 6" OF TOPSOIL SHALL BE PROVIDED IN ALL GENERAL LANDSCAPE AREAS. LANDSCAPE CONTRACTOR SHALL VERIFY THAT SPECIFIED PLANTING SOIL DEPTH IS PRESENT PRIOR TO PLANTING.
- SEED/FERTILIZE/CRIMP HAY MULCH ALL GENERAL LANDSCAPE AREAS DISTURBED DURING CONSTRUCTION, EXCEPT AREAS NOTED ON THIS DOCUMENT TO BE SODDED.
- ALL PLANT MATERIALS LISTED SHALL MEET THE STANDARDS OF THE AMERICAN NURSERY & LANDSCAPE ASSOCIATION FOR THE SIZES GIVEN.
- ALL TREES SHALL BE STAKED WITH A MINIMUM OF THREE STAKES.
- ALL TREES IN THE TURF AREA SHALL HAVE A 5" DIAMETER CIRCLE OF 4" DEPTH SHREDDED HARDWOOD BARK MULCH.
- EDG-KING LANDSCAPE EDGING OR EQUAL SHALL BE PLACED AROUND ALL LANDSCAPE BEDS.
- 3" OF SHREDDED BARK MULCH SHALL BE PLACED IN ALL PLANTING BEDS.
- FILTER FABRIC SHALL BE PLACED BENEATH ALL LANDSCAPE BARK MULCH.
- COORDINATE ALL LANDSCAPE WORK WITH GAS, ELECTRIC, (INCLUDING MAIN SERVICE, SITE LIGHTING, CONDUITS AND SIGNAGE) CABLE AND TELEPHONE CONSTRUCTION AND RESPECTIVE TRADES FOR THE INSTALLATION OF SAID UTILITIES.

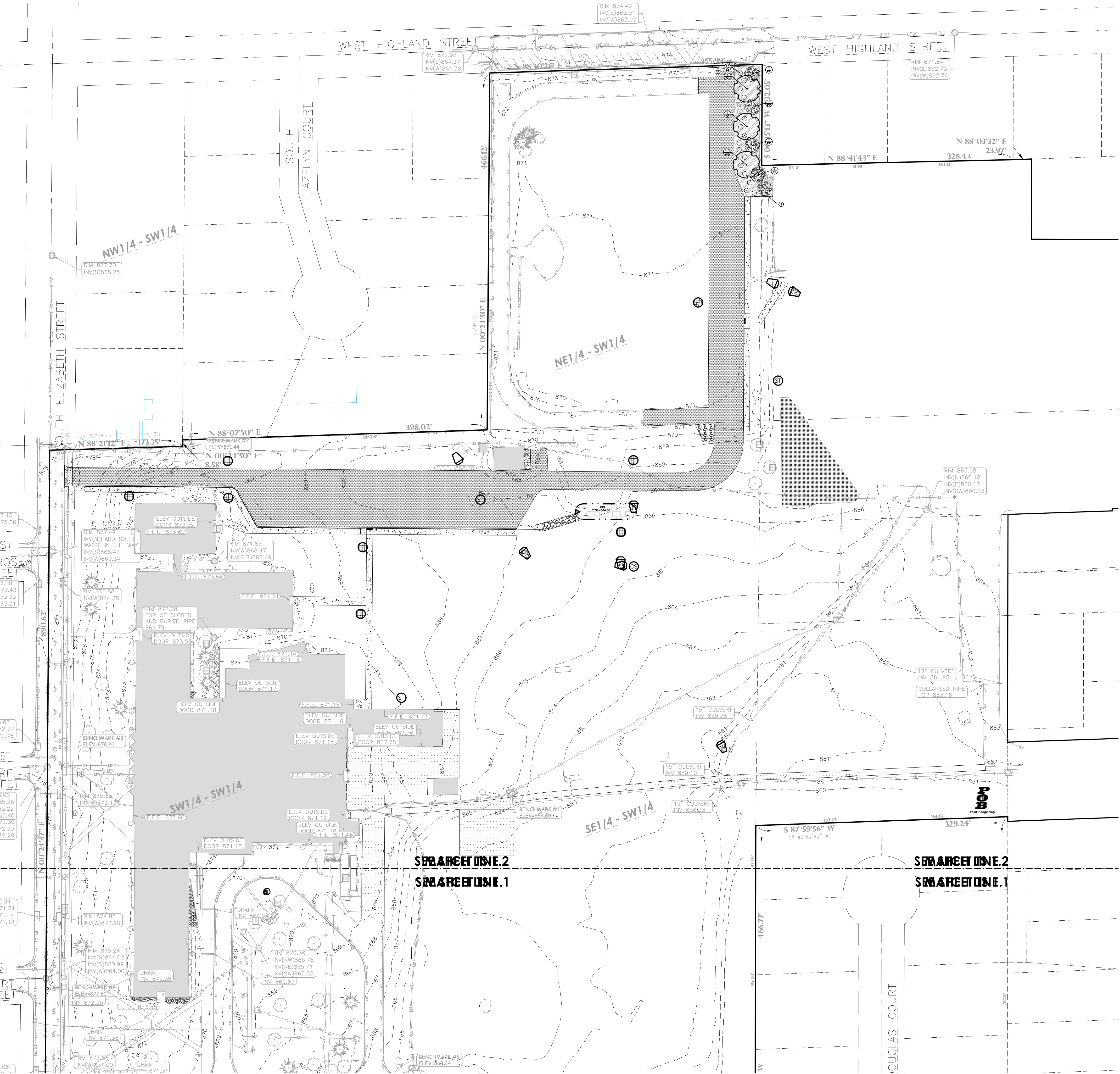
LEGEND:

LANDSCAPE WOOD MULCH
(SEE GENERAL NOTE 8)

PLANTING SCHEDULE:

TREES SYMBOLS	BOTANICAL NAME	COMMON NAME	INSTALLATION SIZE	SIZE AT MATURITY	QUANTITY
AM	ACER MIYABEI 'MORTON'	STATE STREET MAPLE	2" CAL.	45"TX35"W	4
AR	ACER RUBRUM 'JFS-KW78'	ARMSTRONG GOLD MAPLE	1.5" CAL.	35"TX12"W	3
CL	CELTIS 'JFS-KSU1'	PRAIRIE SENTINEL HACKBERRY	1.5" CAL.	40"TX12"W	2
GB	GINKGO BILOBA 'PRINCETON SENTRY'	PRINCETON SENTRY COLUMNAR GINKGO	1.5" CAL.	25"TX12"W	4
GD	GYMNOCLADUS DIOICUS 'ESPRESSO'	ESPRESSO KENTUCKY COFFEE	2" CAL.	50"TX35"W	3
PG	PICEA GLAUCA VAR. DESATA	BLACK HILLS SPRUCE	5"	40"TX20"W	3

SHRUBS SYMBOLS	BOTANICAL NAME	COMMON NAME	INSTALLATION SIZE	SIZE AT MATURITY	QUANTITY
BC	BUXUS X 'GLENCOE'	CHICAGO/LAND GREEN BOXWOOD	5 GAL.	3"TX3"W	9
CE	CEANOTHUS AMERICANUS	NEW JERSEY TEA	5 GAL.	3"TX3"W	18
DI	DIERVILLA IONICERA	DWARF BUSH HONEYSUCKLE	5 GAL.	3"TX3"W	19
HP	HYDRANGEA PANICULATA 'SMHPLOF'	LITTLE QUICK FIRE HYDRANGEA	5 GAL.	5"TX5"W	14
JH	JUNPERUS HORIZONTALIS	CREeping JUNPER	3 GAL.	1"TX8"W	22
RA	RHUS AROMATICA 'GRO-LOW'	GRO-LOW SUMAC	5 GAL.	2"TX6"W	16
SJ	SPIRAEA JAPONICA 'SMNSJMF'	DOUBLE PLAY RED SPIREA	5 GAL.	3"TX3"W	11



BENCHMARK:

ELEVATIONS ARE REFERENCED TO NGVD 29 DATUM.

BENCHMARK #1
600 SPIKE ON NORTH SIDE OF POWER POLE,
LOCATED APPROXIMATELY 70 FEET EAST OF THE
EAST EDGE OF THE SALT SHED.
ELEVATION = 864.69

BENCHMARK #2
600 SPIKE ON SOUTH SIDE OF POWER POLE,
LOCATED APPROXIMATELY 75 FEET NORTH OF THE NORTH EDGE OF THE WHITEWATER MIDDLE SCHOOL BUILDING.
ELEVATION = 871.44

BENCHMARK #3
ARROW BOLT ON HYDRANT, LOCATED ON THE EAST SIDE OF THE INTERSECTION OF SOUTH ELIZABETH STREET AND WEST LAUREL STREET.
ELEVATION = 878.20

BENCHMARK #4
ARROW BOLT ON HYDRANT, LOCATED ON THE EAST SIDE OF THE INTERSECTION OF SOUTH ELIZABETH STREET AND WEST COURT STREET.
ELEVATION = 877.61

BENCHMARK #5
ARROW BOLT ON HYDRANT, LOCATED APPROXIMATELY 175 FEET NORTHEAST OF THE NORTHWEST CORNER OF THE WHITEWATER UNITED SCHOOL DISTRICT CENTRAL OFFICE BUILDING.
ELEVATION = 868.34

UTILITY DISCLAIMER:

THE LOCATIONS, SIZES, AND TYPES OF UNDERGROUND PUBLIC AND PRIVATE UTILITIES OR SUBSTRUCTURES SHOWN HEREON WERE OBTAINED FROM VISUAL INSPECTION, FIELD MEASUREMENTS, AND/OR AS-BUILT PLANS. SANITARY SEWER AND STORM SEWER PIPE SIZES, INVERTS, DIRECTION, AND LOCATIONS BETWEEN MANHOLES ARE SUPPLEMENTED BY AS-BUILT PLANS AND/OR ESTIMATED BASED ON FIELD OBSERVATIONS. PRIOR TO CONSTRUCTION IN THE VICINITY OF ANY UTILITIES SHOWN HEREON, IT IS RECOMMENDED THAT THE LOCATIONS, DEPTHS, AND SIZES BE FIELD VERIFIED. THE LOCATIONS SHOWN HEREON ARE ONLY APPROXIMATE, WITH POSSIBILITY THAT ADDITIONAL UTILITY LINES NOT DISCOVERED, OR MARKED, DURING THE SEARCH OF RECORDS AND THE FIELD SURVEY MAY EXIST. ANY CONTRACTOR USING THE INFORMATION SHOWN HEREON IS HEREBY FOREWARNED THAT ANY EXCAVATION UPON THIS SITE MAY RESULT IN THE DISCOVERY OF ADDITIONAL UNDERGROUND UTILITIES NOT SHOWN HEREON. IN GENERAL, UNDERGROUND UTILITY LOCATIONS ARE SHOWN FROM UTILITY MARKINGS, BY OTHER, AND/OR AS-BUILT PLANS, PROVIDED BY OTHERS. POINT OF BEGINNING MAKES NO WARRANTY OF ANY KIND, EXPRESS OR IMPLIED, WITH RESPECT TO THE EXISTING UTILITIES SHOWN HEREON, AND BELIEVES THAT THE INFORMATION CONTAINED HEREIN IS RELIABLE AND GENERALLY ACCURATE FOR THE PURPOSE INTENDED.

GENERAL NOTES:

- CONTACT DIGGER'S HOTLINE 5 WORKING DAYS PRIOR TO THE START OF DEMOLITION/CONSTRUCTION.
- 6" OF TOPSOIL SHALL BE PROVIDED IN ALL GENERAL LANDSCAPE AREAS. LANDSCAPE CONTRACTOR SHALL VERIFY THAT SPECIFIED PLANTING SOIL DEPTH IS PRESENT PRIOR TO PLANTING.
- SEED/FERTILIZE/CRIMP HAY MULCH ALL GENERAL LANDSCAPE AREAS DISTURBED DURING CONSTRUCTION, EXCEPT AREAS NOTED ON THIS DOCUMENT TO BE SODDED.
- ALL PLANT MATERIALS LISTED SHALL MEET THE STANDARDS OF THE AMERICAN NURSERY & LANDSCAPE ASSOCIATION FOR THE SIZES GIVEN.
- ALL TREES SHALL BE STAKED WITH A MINIMUM OF THREE STAKES.
- ALL TREES IN THE TURF AREA SHALL HAVE A 5" DIAMETER CIRCLE OF 4" DEPTH SHREDDED HARDWOOD BARK MULCH.
- EDG-KING LANDSCAPE EDGING OR EQUAL SHALL BE PLACED AROUND ALL LANDSCAPE BEDS.
- 3" DEPTH OF HARDWOOD BARK MULCH SHALL BE PLACED IN ALL SHRUB PLANTING BEDS. COLOR TO BE SELECTED BY OWNER.
- FILTER FABRIC SHALL BE PLACED BENEATH ALL LANDSCAPE BARK MULCH.
- COORDINATE ALL LANDSCAPE WORK WITH GAS, ELECTRIC, (INCLUDING MAIN SERVICE, SITE LIGHTING, CONDUITS AND SIGNAGE) CABLE AND TELEPHONE CONSTRUCTION AND RESPECTIVE TRADES FOR THE INSTALLATION OF SAID UTILITIES.

PLANTING SCHEDULE:

TREES SYMBOLS	BOTANICAL NAME	COMMON NAME	INSTALLATION SIZE	SIZE AT MATURITY	QUANTITY
AR	ACER RUBRUM 'NORTHWOOD'	NORTHWOOD MAPLE	3" CAL.	50"TX35"W	3
PP	PICEA PUNGENS	COLORADO SPRUCE	5"-6"	45"TX20"W	8
SHRUBS SYMBOLS	BOTANICAL NAME	COMMON NAME	INSTALLATION SIZE	SIZE AT MATURITY	QUANTITY
JC	JUNIPERUS CHINENSIS 'SEA GREEN'	SEA GREEN JUNIPER	24"	4"1"-6"W	17

KEYNOTES:

- LANDSCAPE EDGING - SEE GENERAL NOTES

LEGEND:

MULCH AREA. SEE LANDSCAPE NOTES

LANDSCAPE REQUIREMENTS:

REQUIREMENT: BUFFERYARD REQUIRED TO BE LANDSCAPED WITH (2) LARGE DECIDUOUS TREE, (5) SMALL DECIDUOUS / EVERGREEN TREES AND (12) SHRUBS FOR EVERY 100 FEET OF BUFFERYARD LENGTH.

TOTAL BUFFERYARD LENGTH 135 FEET EQUALS (3) LARGE DECIDUOUS TREES (7) EVERGREEN TREES AND (17) SHRUBS

PROPOSED: 3 LARGE DECIDUOUS TREES & 7 EVERGREEN TREES & 17 SHRUBS

ISSUANCES + REVISIONS:

DATE	DESCRIPTION
1 01/12/26	ADDENDUM 01

Issued for:

CONSTRUCTION DOCUMENTS

12/19/2025

Project Number:

3705

Sheet Title:

LANDSCAPE PLAN

Sheet Number:

L1.0

Bradford Pear trees are often planted for their rapid growth and showy white spring flowers, but research and local experience have shown they are a poor choice for Walworth County and the City of Whitewater. Although once widely recommended as an ornamental tree, Bradford Pears have significant structural and environmental drawbacks. They are short-lived, prone to severe branch breakage during storms and winter weather and frequently fail just as they reach maturity. Their weak branch structure results in higher maintenance costs and increased risk to property and public safety.

In addition to structural issues, Bradford Pear trees are widely known for the unpleasant odor produced by their spring blossoms. While visually striking, the flowers emit a strong smell that many residents find offensive, particularly when trees are planted near homes, sidewalks, parks, or downtown areas. This odor, often compared to rotting fish or other decaying organic matter, can linger for days during peak bloom and significantly detracts from the perceived benefit of the tree's short-lived floral display.

Beyond these concerns, Bradford Pear trees pose a serious environmental threat. While individual Bradford Pear trees are often marketed as sterile, they readily cross-pollinate with other pear varieties, producing viable seed. These seeds spread into natural areas, parks, roadsides, and woodland edges, where they establish aggressively. Once established, Bradford Pears form dense stands that displace native plants, reduce plant diversity, and degrade habitat. The loss of native vegetation directly affects insects, birds, and pollinators that depend on specific native plants for food, reproduction, and shelter.

Fortunately, there are many native tree species well suited to Whitewater's climate and soils that provide spring interest while supporting local ecosystems. These native trees offer attractive blooms, early foliage, and habitat benefits without the long-term problems associated with Bradford Pears.

Native tree alternatives and their spring benefits include:

- Serviceberry (*Amelanchier* spp.) – One of the earliest spring bloomers, producing delicate white flowers that provide nectar for early pollinators.
- Eastern redbud (*Cercis canadensis*) – Known for bright pink to magenta flowers that appear along branches and trunks in early spring.
- Bur oak (*Quercus macrocarpa*) – Produces Spring catkins and supports hundreds of native insect species essential to birds and wildlife.
- Swamp white oak (*Quercus bicolor*) – Adaptable to a range of soil conditions, with soft green spring foliage and early-season catkins.

- Red oak (*Quercus rubra*) – Leafing out early in spring, red oak provides critical habitat and food for native insects.
- Hackberry (*Celtis occidentalis*) – A hardy native that leafs out early and serves as a host tree for several butterfly species.
- American hornbeam (*Carpinus caroliniana*) – A smaller native tree with fine-textured spring foliage and early flowers, well suited for understory planting.
- Ironwood or hophornbeam (*Ostrya virginiana*) – Extremely durable, with subtle spring catkins and strong wildlife value.
- American basswood (*Tilia americana*) – Leafing out in spring with large, soft green leaves and later producing highly valuable flowers for pollinators.
- River birch (*Betula nigra*) – Displays Spring catkins and fresh green growth, along with distinctive exfoliating bark.
- Black cherry (*Prunus serotina*) – Produces showy white flower clusters in spring that attract pollinators and later provide fruit for birds.
- Kentucky coffeetree (*Gymnocladus dioica*) – A unique native that leafs out later in spring, allowing early-season sunlight to reach the ground.

Why native trees matter

Native trees evolved alongside Wisconsin's wildlife and climate, making them far more beneficial than non-native ornamentals. Native insects rely on native plants to complete their life cycles, and birds depend on those insects to feed their young. A single native oak can support hundreds of insect species, while non-native trees often support very few. Native trees are also better adapted to local soils and weather patterns, meaning they typically require less maintenance, are more resilient to pests and disease, and contribute to a stronger, more sustainable urban forest over time.

Residents interested in planting native trees will have an opportunity to do so through the City of Whitewater Urban Forestry Commission Tree Sale. The sale begins the last Friday in April at Starin Park and offers a selection of native, regionally appropriate trees while supplies last. Choosing native trees helps strengthen Whitewater's urban forest, protect nearby natural areas, and ensure that spring beauty enhances the community without unintended environmental or quality-of-life impacts.