



Urban Forestry Commission

Cravath Lakefront room 2nd floor 312 West
Whitewater Str, Whitewater, WI, 53190 *In Person
and Virtual

Monday, March 24, 2025 - 5:30 PM

**Citizens are welcome (and encouraged) to join our webinar via computer, smart phone, or telephone.
Citizen participation is welcome during topic discussion periods.**

Please click the link below to join the webinar:

Topic: Urban Forestry Commission

Time: Mar 24, 2025 05:30 PM Central Time (US and Canada)

Join Zoom Meeting

<https://us02web.zoom.us/j/86740339960?pwd=Vq2Y4CsbTA4vMOaVliqno7Tz0JxQWx.1>

Meeting ID: 867 4033 9960

Passcode: 110869

One tap mobile

+13126266799,,86740339960#,,,,*110869# US (Chicago)

Please note that although every effort will be made to provide for virtual participation, unforeseen technical difficulties may prevent this, in which case the meeting may still proceed as long as there is a quorum. Should you wish to make a comment in this situation, you are welcome to call this number: (262) 473-0108.

AGENDA

CALL TO ORDER

ROLL CALL

APPROVAL OF AGENDA

A committee member can choose to remove an item from the agenda or rearrange its order; however, introducing new items to the agenda is not allowed. Any proposed changes require a motion, a second, and approval from the Committee to be implemented. The agenda shall be approved at each meeting even if no changes are being made at that meeting.

CONSENT AGENDA

Items on the Consent Agenda will be approved together unless any committee member requests that an item be removed for individual consideration.

1. Minutes of January 27, 2025.
2. Minutes of February 24, 2025.

HEARING OF CITIZEN COMMENTS

No formal Committee action will be taken during this meeting although issues raised may become a part of a future agenda. Participants are allotted a three minute speaking period. Specific items listed on the agenda may not be discussed at this time; however, citizens are invited to speak to those specific issues at the time the Committee discusses that particular item.

To make a comment during this period, or during any agenda item: On a computer or handheld device, locate the controls on your computer to raise your hand. You may need to move your mouse to see these controls. On a traditional telephone, dial *6 to unmute your phone and dial *9 to raise your hand.

TREASURER'S REPORT

3. Treasurer's Report
4. Update on segregating funds between City and Urban Forestry Commission.

STAFF REPORT**CONSIDERATIONS / DISCUSSIONS / REPORTS**

5. Discussion and possible action to make Kerry Katovich a permanent member of the commission.
6. Discussion and possible approval of updated Landscape plan for Martin Bower located at 411 N Newcomb Street.
7. Discussion and possible action on retaining the stump and replacing all signage at the Territorial Oak until a time when rot or hazard dictates removal of the stump.
8. Discussion and possible approval of final revision of the City of Whitewater, Landscape Design Guidelines and Standards.

TREE CITY

9. Discussion on how is funding going to be secured on a continual basis for the future?
10. Discussion and possible action regarding 2025 Tree Sale
 - A. Amount to spend on trees.
 - B. Making sure order contains more of what people are requesting.
11. Discussion on website updates for 2025 Tree Sale
12. Discussion on advertising for Tree Sale
13. Discussion on payment of Arboretum website domain.

BIRD CITY**FUTURE AGENDA ITEMS****ADJOURNMENT**

A quorum of the Common Council may be present. This notice is given to inform the public that no formal action will be taken at this meeting.

Anyone requiring special arrangements is asked to call the Office of the City Manager / City Clerk (262-473-0102) at least 72 hours prior to the meeting.



Urban Forestry Commission

Cravath Lakefront room 2nd floor 312 West
Whitewater Str, Whitewater, WI, 53190 *In Person
and Virtual

Monday, January 27, 2025 - 5:30 PM

MINUTES

CALL TO ORDER

Meeting called to order by Board Member McCormick at 5:32 p.m.

Board Member Brown arrived via zoom at 5:35 p.m.

ROLL CALL

PRESENT

Council Representative Brienne Brown
Board Member Joshua Kapfer
Board Member Kerry Katovich
Board Member Carol McCormick
Board Member Bill Chandler

ABSENT

Board Member Sherry Stanek
Chairperson Nicholas Alt

STAFF

Andrew Beckman, Arborist
Kevin Boehm, Director of Park and Recreation

APPROVAL OF AGENDA

A committee member can choose to remove an item from the agenda or rearrange its order; however, introducing new items to the agenda is not allowed. Any proposed changes require a motion, a second, and approval from the Committee to be implemented. The agenda shall be approved at each meeting even if no changes are being made at that meeting.

Motion made by Board Member Katovich, Seconded by Board Member Chandler.

Voting Yea: Board Member Kapfer, Board Member Katovich, Board Member McCormick, Board Member Chandler

CONSENT AGENDA

Items on the Consent Agenda will be approved together unless any committee member requests that an item be removed for individual consideration.

1. Approval of October 10, 2024 Minutes

Motion made by Board Member Kapfer, Seconded by Board Member Katovich.

Voting Yea: Board Member Kapfer, Board Member Katovich, Board Member McCormick, Board Member Chandler

Voting Abstaining: Council Representative Brown

HEARING OF CITIZEN COMMENTS

No formal Committee action will be taken during this meeting although issues raised may become a part of a future agenda. Participants are allotted a three minute speaking period. Specific items listed on the agenda may not be discussed at this time; however, citizens are invited to speak to those specific issues at the time the Committee discusses that particular item.

To make a comment during this period, or during any agenda item: On a computer or handheld device, locate the controls on your computer to raise your hand. You may need to move your mouse to see these controls. On a traditional telephone, dial *6 to unmute your phone and dial *9 to raise your hand.

None

TREASURER'S REPORT

2. Treasurer's Report

Motion to table matter till next meeting.

Motion made by Board Member Kapfer, Seconded by Board Member Chandler.

Voting Yea: Board Member Kapfer, Board Member Katovich, Board Member McCormick, Board Member Chandler

Voting Abstaining: Council Representative Brown

3. Discussion and possible action on segregated funds between City and Urban Forestry Commisison.

Matter was tabled

Motion made by Board Member Chandler, Seconded by Board Member Katovich.

Voting Yea: Council Representative Brown, Board Member Kapfer, Board Member Katovich, Board Member McCormick, Board Member Chandler

STAFF REPORT

None

TREE CITY

4. Discussion on how is funding going to be secured on a continual basis for the future?

This matter was tabled

Motion made by Board Member Chandler, Seconded by Board Member Katovich.
Voting Yea: Council Representative Brown, Board Member Kapfer, Board Member Katovich, Board Member McCormick, Board Member Chandler

5. Discussion and possible action regarding 2025 Tree Sale

A. Amount to spend on trees

B. Making sure order contains more of what people are requesting

This matter was tabled

Motion made by Board Member Chandler, Seconded by Board Member Katovich.
Voting Yea: Council Representative Brown, Board Member Kapfer, Board Member Katovich, Board Member McCormick, Board Member Chandler

6. Discussion and revision of current Landscaping Guidelines policy.

McCormick explained that this was brought to Plan Commission and she was put to task by other members of the commission for a red line version of the changes. The question is related to the point system. Are we going to continue with the policy and red line it, which means to go page by page and make changes or do we do away with it.

Beckman stated that if you get away from the points systems you would have to replace it.

McCormick stated that the point system felt archaic.

Beckman explained that with the point system if a development leaves certain size trees they get points for those. If plant certain type trees you get points for those. The developer has to come up with a landscape plan with the minimum amount of points that are required. They can have more.

McCormick asked about who does the points. Beckman explained that when the landscapers are together the development plan they are keeping a running total of the points. Most will do the bare minimum and some will do more. The idea is to get them to have enough points in that they have diverse landscape. This is why we updated the trees and plants.

Boehm stated that there is no where in the guidelines is there a description of what the point system is or how many points you need.

Brown asked if this was something that Board Member Stanek would now but she was not at the meeting.

McCormick stated that the policy was adopted in 2005, revised in 2006 and revised in 2010 which is 14 years.

Beckman stated that it is very dated.

McCormick asked who decided the point system. Beckman stated who could tell you who it has been here a long time.

Katovich pointed out that on page 7 of the packet or page 2 of the policy under paved areas it says one large deciduous tree and additional landscaping should be planted for each 1,500 square feet of paved area but there are no points listed there.

Katovich mentioned that even on page 9 of packet or page 4 of policy that an additional 200 points of landscaping should be planted for each 5,000 square feet of total site area.

Chandler stated that a point system is very efficient at looking at things objectively.

Beckman stated that we need to figure out the end game.

Boehm asked Beckman if where the species are currently listed, is this where the new lists would be going into.

Beckman confirmed that would be the case.

McCormick asked is there a threshold that developers have to reach. Recommended we showed reach out to another city how they do theirs.

McCormick stated this is a work in process.

FUTURE AGENDA ITEMS

-Moving Kerry Katovich to a full position

-One of the landlords order stickers from the purple martin society and they will be added to the poles with contact information for those houses.

-Territorial Oak joint meeting with Landmarks Commission

NEXT MEETING DATE FEBRUARY 25, 2025

ADJOURNMENT

Meeting adjournment at 6:05 p.m.



Urban Forestry Commission

Cravath Lakefront room 2nd floor 312 West
Whitewater Str, Whitewater, WI, 53190 *In Person
and Virtual

Monday, February 24, 2025 - 5:30 PM

CALL TO ORDER

Meeting called at 5:32 p.m.

ROLL CALL

PRESENT

Board Member Sherry Stanek
Chairperson Nicholas Alt
Board Member Joshua Kapfer
Board Member Kerry Katovich
Board Member Carol McCormick
Board Member Bill Chandler

ABSENT

Council Representative Brienne Brown

STAFF

Andrew Beckman, Arborist

LANDMARKS MEMBER

Pat Blackmer

APPROVAL OF AGENDA

A committee member can choose to remove an item from the agenda or rearrange its order; however, introducing new items to the agenda is not allowed. Any proposed changes require a motion, a second, and approval from the Committee to be implemented. The agenda shall be approved at each meeting even if no changes are being made at that meeting.

Motion made by Board Member McCormick, Seconded by Board Member Kapfer.

Voting Yea: Board Member Stanek, Chairperson Alt, Board Member Kapfer, Board Member Katovich, Board Member McCormick, Board Member Chandler

CONSENT AGENDA

Items on the Consent Agenda will be approved together unless any committee member requests that an item be removed for individual consideration.

HEARING OF CITIZEN COMMENTS

No formal Committee action will be taken during this meeting although issues raised may become a part of a future agenda. Participants are allotted a three minute speaking period. Specific items listed on the

agenda may not be discussed at this time; however, citizens are invited to speak to those specific issues at the time the Committee discusses that particular item.

To make a comment during this period, or during any agenda item: On a computer or handheld device, locate the controls on your computer to raise your hand. You may need to move your mouse to see these controls. On a traditional telephone, dial *6 to unmute your phone and dial *9 to raise your hand.

TREASURER'S REPORT

1. Treasurer's Report.

Sherry provided a back ground that prior to the current board Urban Forestry received a donation of \$800.00 from Peter Underwood and his wife to be put towards educational programs on bees, trees and birds.

At that time Chuck Nass who was the arborist at that time recommended that the Urban Forestry Commission get a regular checking account and provided the City Tax ID to open the account so we were not paying fees.

Recently, Karen Dieter who is the comptroller of the city recently inform Kevin Boehm, Park and Recs Direction that since the checking account has a City Tax ID number that it needs to be available to be audited and viewed by the City.

We viewed this as petty cash which is not ok with the City.

We have two choses. We can either closed the current checking account with the City Tax ID and turn the money over to the City for Deposit into Fund 245 which is were Urban Forestry and Parks money is kept. This would allow the City to front us money for the tree sale and other projects.

Or we closed the current account and open a new account not associated with the City's Tax ID. The City will issue us a check for that they hold in for us in the 245 Account which is currently \$1,311.76. They would no longer front us funds for trees for the tree sale or other projects. We would be on our own.

We have never been a separate entity or a 501 3c. We don't have money coming in. We are an advisory committee to the city.

Kapner asked what Alt is most worried about with the money.

2. Discussion and possible action on segregated funds between the City and Urban Forestry Commission.

Matter was discussed in the Treasurer's Report.

Tabled to next meeting.

STAFF REPORT

Beckman stated that the structure pruning of the smaller trees is continuing.

CONSIDERATIONS / DISCUSSIONS / REPORTS

3. Discussion and possible action related to the Territorial Oak.

Beckman stated that entire tree wood is at shop. We have two slabs available. The tree was actually two trees.

Stanek stated one of the cookies is to go to the Historical Society. The other is for the arboretum.

Beckman stated that they still need to be treated.

Walworth County Historically wanted a slab

Blackmer asked about the stump.

Beckman stated that he is waiting for direction.

Stanek stated that she would like stump to stay. The center of the tree had a lot of rot.

Blackmer stated that it is not entirely Urban Forestry choice. Landmarks also has to weigh in on what will happen.

Chandler asked about whether the sign was easily stolen.

Beckman explained that is about 3 to 4 foot high monument that is permanent it was just removed during removal of the tree so it would not be damaged.

Beckman would like to look at lowering it.

Chandler made a motion that the marker be place back next to the Territorial Oak Stump. where it was previously located.

Motion made by Board Member Chandler, Seconded by Board Member McCormick.
Voting Yea: Board Member Stanek, Chairperson Alt, Board Member Kapfer, Board Member Katovich, Board Member McCormick, Board Member Chandler.

Blackmer asked about the stump.

Stanek made a motion that the stump remain until Urban Forestry and Landmarks can have further discussion. Second was made by Kapfer.

Motion made by Board Member Stanek, Seconded by Board Member Kapfer.
Voting Yea: Board Member Stanek, Chairperson Alt, Board Member Kapfer, Board Member Katovich, Board Member McCormick, Board Member Chandler

4. Discussion and possible action on making alternate a permanent member of commission.

No action taken.

5. Discussion and possible approval of Landscape plan for Martin Bower located at 411 N Newcomb Street.

Beckman stated that the only the only thing change with this site is the southeast corner, they are adding a dumpster enclosure with 6 arborvitaes. The piece to the north east is already an impervious surface. They are making loading docks so no change to impervious surface.

Motion by Stanek to approve the dumpster pad and the six arborvitaes.

Motion made by Board Member Stanek, Seconded by Board Member McCormick.
Voting Yea: Board Member Stanek, Chairperson Alt, Board Member Kapfer, Board Member Katovich, Board Member McCormick, Board Member Chandler.

6. Discussion and possible approval of the landscape plan for contractor shops to be located at Greenway Court.

Beckman stated that he had issues with the species with of freeman maple which is a broad description. Beckman recommended 4 freeman maples, two celebration maples and two sienna glen maples.

Alt suggested 3 Shoei mountain ash 3 black tupelo 3 yellowwood.

Beckman stated that he created a more diversified list.

Stanek made a motion to approve the landscape plans with changes that the city forester is recommending.

Motion made by Board Member Stanek, Seconded by Board Member McCormick.
Voting Yea: Board Member Stanek, Chairperson Alt, Board Member Kapfer, Board Member Katovich, Board Member McCormick, Board Member Chandler

7. Discussion and possible action regarding landscaping guidelines.

McCormick explained that this came from Plan Commission with questions regarding updating and the point system. Due to having no information it was recommended it come back to this commission.

Beckman stated that he had the deer in the headlights look at the last meeting since no where in the landscaping guidelines policy does it explain the points system. At some point it was getting revised, however that person left and it never got passed on for completion. We are one of the few communities that actually has our landscape guidelines on our website. Beckman stated there is not much wrong with our landscape guidelines once you put the point system in it.

Alt stated that the old plants and species listed no longer works, however we can add points to the new plant species.

Motion by Chandler to have Beckman, arborist update the new plant list and add the points to each plant and add to the policy with a new revised date.

Motion made by Board Member Chandler, Seconded by Board Member Stanek.
Voting Yea: Board Member Stanek, Chairperson Alt, Board Member Kapfer, Board Member Katovich, Board Member McCormick, Board Member Chandler

TREE CITY

8. Discussion on how is funding going to be secured on a continual basis for the future?

Matter Tabled

9. Discussion and possible action regarding 2025 Tree Sale

A. Amount to spend on trees.

B. Making sure order contains more of what people are requesting.

Matter Tabled

FUTURE AGENDA ITEMS

-Website updates for Tree Sale

-Advertising for Tree Sale

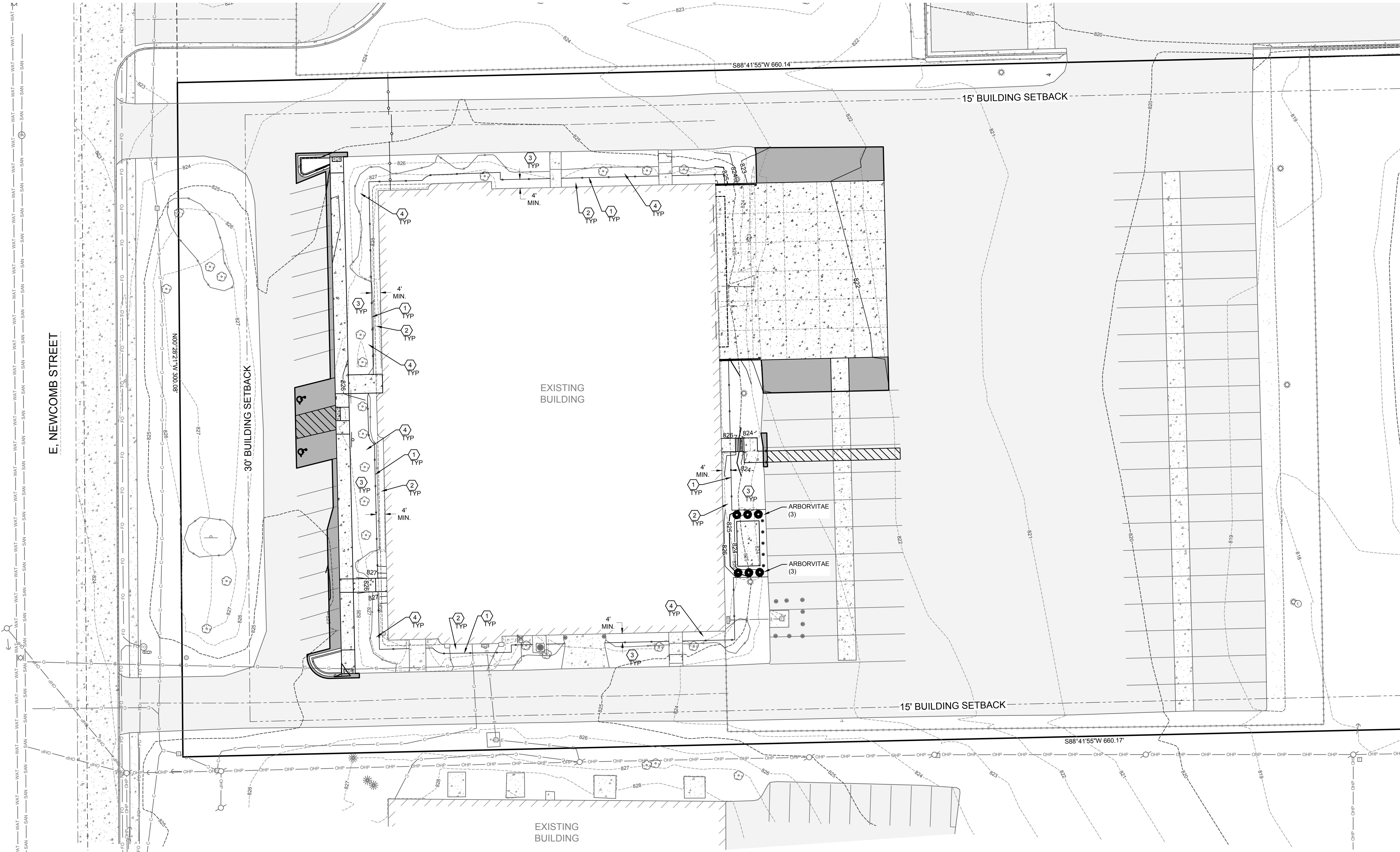
NEXT MEETING DATE MARCH 24, 2025

ADJOURNMENT

Meeting was adjourned at 6:47 p.m.

Motion made by Board Member McCormick, Seconded by Board Member Kapfer.

Voting Yea: Board Member Stanek, Chairperson Alt, Board Member Kapfer, Board Member Katovich, Board Member McCormick, Board Member Chandler

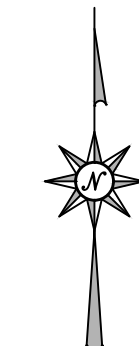


SHEET KEY NOTES:

- ① PROFESSIONAL GRADE EDGING
- ② 4" THICK X 4' WIDE STONE MULCH (RODENT RUN) OVER WEED BARRIER FABRIC; MULCH TO MATCH EXISTING. WEED BARRIER SHALL BE 10 MIL POLY.
- ③ LAWN
- ④ PROTECT EXISTING LANDSCAPING

PLANT TABLE

SYMBOL	COMMON NAME	SCIENTIFIC NAME	QUANTITY	SIZE
●	ARBORVITAE	THUJA OCCIDENTALIS 'SMARAGD'	6	2 GAL.



2260 Salscheider Court Green Bay, WI 54313
 PH: 920-569-5765; Fax: 920-569-5767
 www.mach-iv.com
 Project Number: 2303-01-25

CITY SITE REVIEW - NOT FOR CONSTRUCTION

A NEW BUILD-OUT FOR:
MARTIN BROWER - WHITEWATER
 WHITEWATER, WISCONSIN

SHEET TITLE
 LANDSCAPE PLAN

REVISION HISTORY

NO.	DESCRIPTION	DATE

date: 02-10-2025
 job: XX-XXX
 d. by:

L100

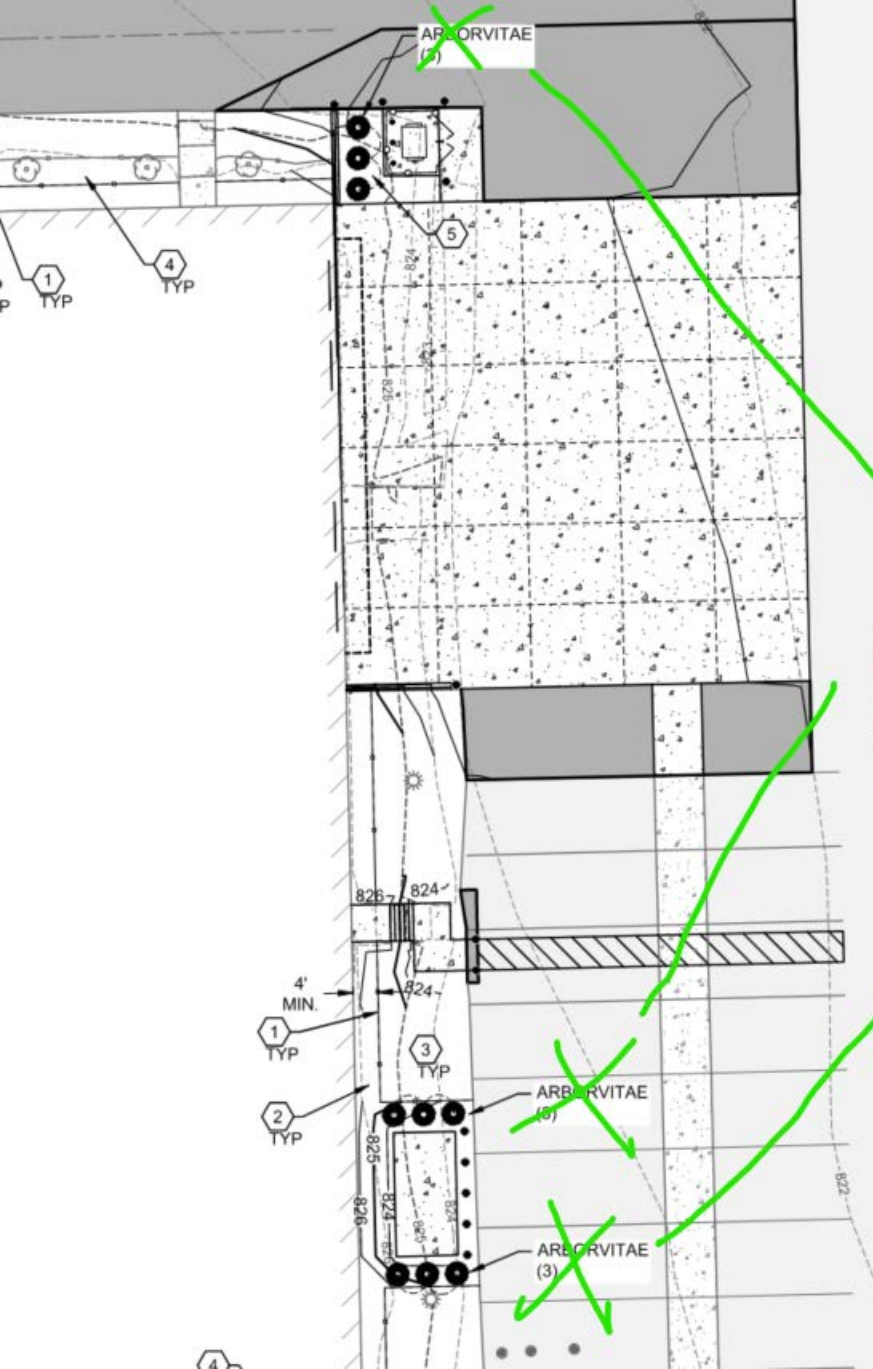
Item 6.

Gries
 Architectural Group Inc.

NEENAH OFFICE:
 500 North Commercial Street
 Neenah, WI 54956
 Phone: 920-722-2445
 www.gries.design

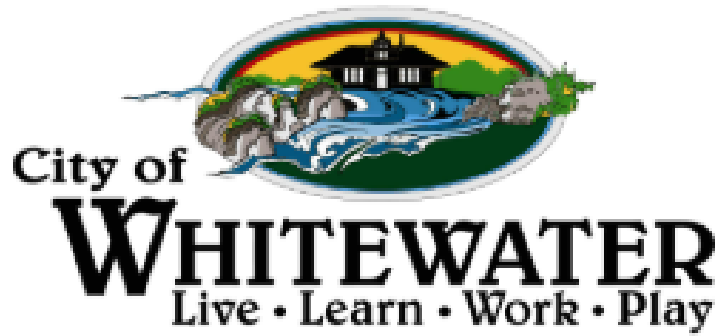
HUDSON OFFICE:
 400 South 3rd Street
 Hudson, WI 54633
 Phone: 920-722-2445
 www.gries.design

©Copyright. This Print/Computer File is the Exclusive Property of Gries Architectural Group, Inc. Use Only For Purpose Which Licensed. Copying Or Reproducing Is Prohibited. Return Upon Request.



Item 6.

Remove



LANDSCAPE DESIGN GUIDELINES AND STANDARDS

REVISED January 29, 2025



TABLE OF CONTENTS

Required Components of a Landscape Plan 1

Treating of Existing Vegetation 1

Recommended Locations and Amount of New Landscaping 2

 Street Frontages..... 2

 Paved Areas..... 2

 Building Foundations..... 3

 Landscaped Buffer Yards..... 3

 General Yard Areas..... 4

 Screening 4

 Vision Triangles and Easement..... 5

Recommended Sizes and Species of New Landscaping 5

Prohibited Species 5

Descriptions and Standards for Rain Gardens and Bioswales 14

General Installation for Landscaping and Buffer Yards 15

Deciduous Tree Planting Standard..... 16

Scoring Landscaping Proposals 17



Landscape Guidelines

The Plan and Architectural Review Commission reviews site and landscape plans for all new and expanded commercial, industrial, institutional, and multiple family housing projects. Landscaping beautifies the property and City, buffers land uses and unattractive structures, increases property values, conserves energy, and helps clean the air and water. The Commission adopted the following guidelines to assist developers, builders, and property owners in meeting the expectations for landscaping. The use of the term “must” below, reflects zoning ordinance requirements that are mandatory.

Required Components of a Landscape Plan

- A scale (e.g. 1 inch = 50 feet) a north arrow, a date, and an accurate representation of site conditions (e.g. property dimensions should be correct with all features drawn to scale).
- All areas to be left in green space and how they will be covered (e.g. grass, mulch, native vegetation).
- All trees over 4-inch caliper to be removed or portions of woods with such trees that are proposed for removal.
- All existing trees that are over 4-inch caliper or edges of woods with such trees.
- All existing trees and other plantings proposed to remain on site after construction, including proposed locations for barrier fencing or other ways to ensure their preservation.
- Location, species, size at time of planting, and size at maturity for proposed landscape plants.
- Adjacent streets, existing and proposed buildings, parking lots, loading areas, dumpsters, existing or proposed grades, outdoor storage areas, and mechanical units and utilities in relation to proposed plantings.
- Name, address, and phone number of both the person who prepared the plan and the property owner.

For simple projects, the Landscape Plan may be included on a map that also shows other proposed site improvements, like proposed buildings, signs, lighting, utilities, and grading.

Treatment of Existing Vegetation

Pre-existing landforms, terrain, and vegetation should be preserved as much as practical. This may be achieved by minimizing building construction and site modifications in areas not essential to project development. High quality, mature, and native trees and hedges should be retained where practical and should not be removed to facilitate commercial signage. Preservation of existing vegetation will reduce expectations for new landscaping, while major removal of existing vegetation may result in expectations for new landscaping greater than what guidelines normally suggest. In general, where large, high quality trees are proposed for removal on a landscape plan, the equivalent diameter of new tree should also be included in the plan (e.g. one maple with a 12-inch diameter trunk removed = planting of four 3-inch diameter hardwood canopy trees). Similarly, mature trees identified for preservation in the approved Landscape Plan but subsequently lost should be replaced by new trees of similar total diameter.

Mature trees identified for preservation on a Landscape Plan should be protected during construction by not allowing grading or equipment or vehicle storage in these areas and by

making all contractors aware of the preservation requirements. During construction, barrier fencing should generally be placed at the Critical Root Zone (CRZ) of the tree, as defined as a radius equivalent to 1.5 feet for every inch in trunk Diameter at Breast Height (DBH). For example, a tree with a trunk diameter of 12 inches has a Critical Root Zone radius of 18 ft.

The Urban Forestry Management Plan available from the City's Parks, Recreation and Forestry Department contains additional preservation guidance (see particularly the City's Terrace Tree Protection Guideline).

Recommended Locations and Amount of New Landscaping

New Landscaping planting should be provided on different parts of the site, as advised below;

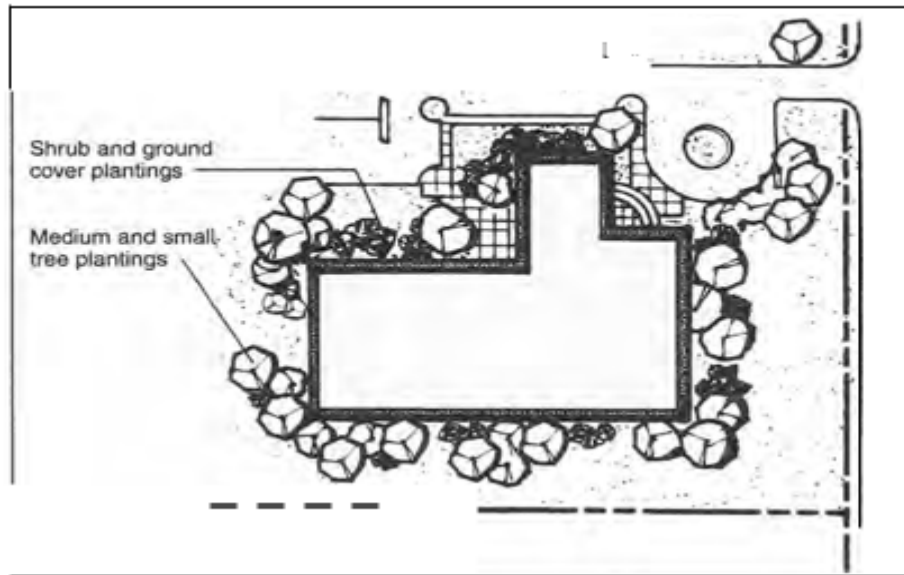
1. **Street Frontages.** One deciduous tree must be planted for each 35 feet along each side of a street right of way, except where a clustered or wider spacing is allowed by the City Forester where traffic visibility, street lights, or utilities would be negatively affected. Street trees should be planted midway between the sidewalk and curb, or within 15 feet of the property line adjoining the street, but only if space is not available between the sidewalk and curb. Plantings may also be appropriate in any boulevard included in development plans. Street tree species should be approved by City Forester prior to installation, and should be based generally upon the information provided in Figures 3 below.
2. **Paved Areas.** One large deciduous tree and 60 points of additional landscaping (see Figure 3. Appropriate Plant Species and Sizes) should be planted for each 1,500 square feet of paved area, which is about the same amount of space required for five parking spaces plus a driveway. Plants should be installed in landscaped islands within the paved area of within 15 feet of the edges of the paved area. Landscaped islands or peninsulas must be provided at the end of every parking row, and interior islands should be provided for every 20 parking spaces in non-industrial projects. Species selection for paved area plantings is particularly important to ensure salt and snow tolerance (see Figure 3), proper growth habit and branch height, avoidance of messy fruit or other litter from the tree, and maintenance of good visibility within parking lots.

Figure 1: Parking Lot Landscaping Example



3. **Building Foundations.** 160 points of landscaping (see Figure 3) should be planted for each 100 lineal feet of exterior building wall that is visible from public right of way and adjoining sites. The graphic on the following page provides an example of building landscaping. Plants required by this section should be installed within 20 feet of the building foundation and generally should not include large deciduous trees.
4. **Landscaped Buffer Yards.** The City requires installation of a landscape buffer yard;
 - In yards where a B-1, B-3. or M-1 zoning district abuts a residential use or zoning districts;
 - Where off-street parking areas for five or more vehicles are within 15 feet of lot line, except where the next-door lot also contains parking within that same distance, and;
 - Where lots in new residential subdivision back onto a proposed major street.

Figure 2: Building Foundation Planting Example



The minimum width of a landscaped buffer yard is 10 feet (30 feet where subdivision lots back onto a major street), not including the area between the sidewalk and street curb. Buffer yards are generally required to be landscaped with two large deciduous trees, five small deciduous and/or evergreen trees, and twelve shrubs for every 100 feet of buffer yard length. The Plan Commission may instead approve substitute landscaping, a berm, an opaque fence or wall, or some combination. Fences or walls should generally not be used in street yards and must not be more than six feet tall in residential zoning districts and 10 ft tall in non-residential districts. A berm is mound of soil surfaced with a landscape ground cover, generally three to six feet above the surrounding grade and preferably of an undulating or otherwise visually interesting layout.

5. **General Yard Areas.** In other parts of the site, 200 additional points of landscaping (see Figure 3) should be planted for each 5,000 square feet of total site area. Most general yard area landscaping should be located in street facing yards. Except for approved natural areas, general yard areas should be seeded. Slopes should be a maximum of three vertical feet for every one horizontal foot. Where retaining walls are necessary, they should be designed to be less than 10 feet in height and constructed with stone or block, or terraced if the grade change is 10 feet or more.

6. **Screening.**

Dumpsters, outside storage area, loading docks, vending machines, and large or unsightly mechanical utility, or telecommunication units should be enclosed by a fence, wall, and /or landscaping designed to provide a total visual screen from public right of way and adjacent properties. Screening fences and walls surrounding outdoor storage areas should generally be between six and eight feet tall, while fences and walls designed to screen other areas should generally be between four and six feet tall. Future trimming of screen planting that limits their capacity to provide a total visual screen is not permitted. The base of freestanding signs- monuments and pylon signs- should also be landscaped. Low level plantings should be selected in sign areas.

- 7. Vision Triangles and Easements.** No parts of plantings within 10 feet of ground level may extend over any public right of way. No new landscape plantings with a mature height over two and one-half feet or with branches at maturity that will be less than 10 feet may be placed in vision triangles near street intersections (see Section 19.51.010 of zoning ordinance in order to measure extent of vision triangle). Planting in utility easements is at risk of the property owner and may be subject to restrictions associated with the easement. Tree plantings should generally be at least 20 feet from street lights, 10 feet from hydrants, and six feet from gas and water valves.

Recommended Sizes and Species of New Landscaping

Figure 3 indicates the points that may be obtained for each plant within the five different categories of landscape plantings. Large deciduous tree, small deciduous tree, evergreen tree, shrub and perennial planting bed. When added together, the points obtained from each plant depicted in a Landscape Plan may be used to determine whether the landscaping point guideline above are being met. Figure 3 also provides a starting point for potential plant species selection within each of the five categories of plantings.

Figure 3 includes examples of appropriate tree and shrub species for different, unique applications. These include trees appropriate for placement under power lines.

For more information in selecting plants:

<https://hort.extension.wisc.edu/article-topic/deciduous-selection/>

For more information on prohibited plantings:

<https://dnr.wisconsin.gov/topic/Invasives/RegulatedSpecies>

Figure 3
Approved Street Tree List

STREET NAME	BOTANICAL NAME	HEIGHT	LENGTH	POINTS
Aspen				
Quaking	Populus tremuloides	40-50	20-30	165
Buckeye				
Yellow	Aesculus Flava	60-75	30-50	150
Coffeetree				
Espresso Kentucky	Gymnocladus dioicus 'Espresso'	50	35	150
Kentucky	Gymnocladus dioicus	50-60	50-60	165
Cypress				
Bald	Taxodium distichum	50-70	20-30	150
Shawnee Brave Bald	Taxodium distichum 'Mickelson'	50	15-20	150
Elm				
Princeton	Ulmus americana 'Princeton'	60-80	40-60	150
Valley Forge	Ulmus americana 'Valley Forge'	80	60	150
Ginko				
Autumn Gold	Ginko biloba 'Autumn Gold'	40-50	25-30	150
Magyar	Ginko biloba 'Magyar'	40-50	20-25	150
Princeton Sentry	Ginko biloba 'Princeton Sentry'	40-50	15-20	150
Gum				
Black	Nyssa sylvatica	30-50	20-30	165
Hackberry				
	Celtis Occidentalis	40-60	40-60	165
Linden				
Boulevard American	Tilia americana 'Boulevard'	60	25	150
Sweet Street	Tilia americana 'Kromm'	50	25	150
Honey Locust				
	Gleditsia triacanthos	40-50	30-40	150
Maple				
Celebration	Acer x freemanii 'Celzam'	40-50	20-35	150
Sienna Glen	Acer x freemanii 'Sienna'	40-50	35-40	150
Sugar	Acer saccharum	50-75	50	165
Oak				
Burr	Quercus macrocarpa	70-80	75-90	165
Chinkapin	Quercus muehlenbergii	50-60	50-60	165
Hybrid Swamp x Burr	Quercus x schuettei	75	70	165
Red	Quercus rubra	60-75	60-75	165
Planetree				
Exclamation London	Platanus x acerifolia 'Morton Circle'	60	45	150

Minimum size at time of planting - 2-inch trunk
Diameter measure at 4ft. up

Approved Large Area Tree List

STREET NAME	BOTANICAL NAME	HEIGHT	LENGTH	POINTS
Aspen				
Quaking	Populus tremuloides	40-50	20-30	165
Basswood				
American	Tilia americana	75-130	23-35	165
Beech				
American	Fagus grandifolia	60-75	55-65	165
Birch				
Paper	Betula papyrifera	50	35	165
River	Betula nigra	40-70	40-60	165
Yellow	Betula alleghaniensis	40-60	40-50	165
Buckeye				
Yellow	Aesculus Flava	60-75	30-50	150
Butternut	Juglans cinerea	40-60	40-60	165
Coffeetree				
Kentucky	Gymnocladus dioicus	50-60	50-60	165
Cypress				
Bald	Taxodium distichum	50-70	20-30	150
Shawnee Brave Bald	Taxodium distichum 'Mickelson'	50	15-20	150
Elm				
Princeton	Ulmus americana 'Princeton'	60-80	40-60	150
Valley Forge	Ulmus americana 'Valley Forge'	80	60	150
Ginko				
Autumn Gold	Ginko biloba 'Autumn Gold'	40-50	25-30	150
Magyar	Ginko biloba 'Magyar'	40-50	20-25	150
Princeton Sentry	Ginko biloba 'Princeton Sentry'	40-50	15-20	150
Gum				
Black	Nyssa sylvatica	30-50	20-30	165
Moraine Sweet	Liquidambar styraciflua 'Moraine'	40-45	25-30	150
Hackberry	Celtis Occidentalis	40-60	40-60	165
Hickory				
Shagbark	Carya ovata	80	40	165
Katsura	Cercidiphyllum japonicum	40-60	20-35	150
Linden				
American Sentry	Tilia americana 'McKSentry'	50-60	20-25	150
Honey Locust	Gleditsia triacanthos	40-50	30-40	150
Maple				
Red	Acer rubrum	40-60	40-60	165
Sienna Glen	Acer x freemanii 'Sienna'	40-50	35-40	150
Sugar	Acer saccharum	50-75	50	165

Magnolia				
Cucumbertree	Magnolia acuminata	50-80	35-60	150
Oak				
Black	Quercus Velutina	50-60	50-60	165
Burr	Quercus macrocarpa	70-80	75-90	165
Chinkapin	Quercus muehlenbergii	50-60	50-60	165
Hybrid Swamp x Burr	Quercus x schuettei	75	70	165
Red	Quercus rubra	60-75	60-75	165
Planetree				
Exclamation London	Platanus x acerifolia 'Morton Circle'	60	45	150
Redwood				
Dawn	Metasequoia glyptostroboides	75-100	15-25	150
Sycamore				
American	Platanus occidentalis	70-90	80	165
Tuliptree	Liriodendron tulipifera	70-80	35-45	150
Yellowwood	Cladrastic kentukea	30-50	40-50	165

Minimum size at time of planting
2-inch trunk diameter measures 4 ft. up

Approved Medium-Small Street Tree List

STREET NAME	BOTANICAL NAME	HEIGHT	LENGTH	POINTS
Buckeye				
Early Glow	Aesculus glabra 'J.N. Select'	35	35	60
Mystic Ruby	Aesculus x bushii 'Aaron#1'	30-35	15-20	60
Cockspur Hawthorn Thornless				
	Crataegus Crus-galli var. inermis	20-30	25-35	75
Crabapple				
Crab	Non-native			60
Prairie	Malus ioensis	15-20	15-20	75
Elm				
New Horizon	Ulmus 'New Horizon'	30-40	15-25	60
Ironwood	Ostrya virginiana	25	15	75
Lilac				
Ivory Silk Japanese	Syringa reticulata subsp. Reticulata	25	15	60
Maple				
Paper Barked	Acer griseum	20-30	20-30	60
State Street Miyabe's	Acer miyabei 'Morton'	50	40	60
Magnolia				
Royal Star	Magnolia stellata 'Royal Star'	10-15	10-15	60
Musclewood	Carpinus caroliniana	25-30	25-30	75
Red Bud, Eastern	Cercis canadensis	20-30	25-35	75
Serviceberry				
Allegheny	Amelanchier laevis	25	15	75
Apple	Amelanchier x grandiflora	25-30	25-30	75
Autumn Brilliance	Amelanchier x grandiflora 'Autumn Brilliance'	20-25	20-25	60

Minimum size at time of planting

1 1/2-inch trunk diameter measured at 4 ft. up

Approved Medium-Small Off-Street Tree List

STREET NAME	BOTANICAL NAME	HEIGHT	LENGTH	POINTS
Buckeye				
Early Glow	Aesculus glabra 'J.N. Select'	35	35	60
Mystic Ruby	Aesculus x bushii 'Aaron#1'	30-35	15-20	60
Crabapple				
Crab	Non-native			60
Prairie	Malus ioensis	15-20	15-20	75
Dogwood				
Golden Glory	Cornus mas 'Golden Glory'	15-25	15-25	60
Pagoda	Cornus alternifolia	15-25	15-25	75
Elm				
New Horizon	Ulmus 'New Horizon'	30-40	15-25	60
Ironwood	Ostrya virginiana	25	15	75
Lilac				
Ivory Silk Japanese	Syringa reticulata subsp. reticulata	25	15	60
Maple				
Paper Barked	Acer griseum	20-30	20-30	60
Striped	Acer pensylvanicum	20	15	60
Magnolia				
Royal Star	Magnolia stellata 'Royal Star'	10-15	10-15	60
Musclewood	Carpinus caroliniana	25-30	25-30	75
Red Bud, Eastern	Cercis canadensis	20-30	25-35	75
Serviceberry				
Allegheny	Amelanchier laevis	25	15	75
Apple	Amelanchier x grandiflora	25-30	25-30	75
Autumn Brilliance	Amelanchier x grandiflora 'Autumn Brilliance'	20-25	20-25	60
Seven Son Flower	Heptacodium miconioides	15-20	8-15	60

Minimum size at time of planting
1 1/2-inch trunk diameter measured 4 ft. up

Approved Native Conifer Tree List

COMMON NAME	BOTANICAL NAME	HEIGHT	LENGTH	POINTS
Balsam fir	Abies balsamea	40-60	15-25	55
Growth narrow, conical				
Eastern red cedar	Juniperus virginiana	30-40	8-20	55
Growth tree form				
Tamarack	Larix laricina	30-50	10-15	55
Growth conical, upright				
Northern white cedar	Thuja occidentalis	20-30	10-15	55
Growth tree form				
Canadian hemlock	Tsuga canadensis	20-45	15-25	55
Growth dense, conical				
Eastern white pine	Pinus strobus	50-80	20-40	55
Pyramidal in youth				
White spruce	Picea glauca	40-60	10-20	55
Broad, conical				
Jack pine	Pinus banksiana	35-50	20-30	55
Upright				
Black spruce	Picea mariana	20-50	20-30	55
Upright, narrow, conical				
Red pine	Pinus resinosa	50-80	20-25	55
Tree form				
All other Evergreens				40

Approved Landscape Plants

NATIVE - HERBACIOUS				
COMMON	LATIN	HEIGHT	BLOOM COLOR	POINTS
Lavender Hyssop	Agastache foeniculum	2-4'	Purple	
Nodding Onion	Allium cernuum	18"	Pink	
Sullivant's Milkweed (Prairie)	Asclepias sullivantii	3-5'	Pink	
Butterfly Milkweed	Asclepias tuberosa	2'	Orange	
New England Aster	Aster novae-angliae	5'	Purple/Pink	
Canada Milk Vetch	Astragalus canadensis	1-3'	Cream	
White Wild Indigo	Baptisia alba	4'	White	
Blue Wild Indigo	Baptisia australis	3-5'	Blue	
Cream False Indigo	Baptisia bracteata	1-2'	Cream	
Yellow Wild Indigo	Baptisia tinctoria	2-3'	Yellow	
Downy Wood Mint	Blephilia cilata	1-2'	Purple	
Pale Purple Coneflower	Echinacea pallida	3-5'	Purple	
Purple Coneflower	Echinacea purpurea	3-4'	Purple	
Rattlesnake Master	Eryngium yuccifolium	4'	White/Green	
Early Sunflower	Helianthus helianthoides	3-5'	Yellow	
Prairie Alumroot	Heuchera richardsonii	2'	Green	
Round Headed Bush Clover	Lespedeza capitata	4'	White	
Rough Blazing Star	Liatris aspera	2-5'	Purple	
Michigan Lilly	Lilium michiganense		Orange	
Wild Bergamot	Monarda fistulosa	2-4'	Lavender	
Eastern Prickly Pear Cactus	Optuntia humifosa	6"	Yellow	
Wild Quinine	Parthenium integrifolium	4'	White	
Smooth Penstemon	Penstemon digitalis	1-3'	White	
Large Flowered-Penstemon	Penstemon grandiflorus	1-3'	Lavender	
Compass Plant	Silphium laciniatum	8'	Yellow	
Rosin Weed	Silphium integrifolium	4-6'	Yellow	
Spiderwort	Tradescantia ohiensis	2-4'	Blue	
Hoary Vervain	Vergenea stricta	2-4'	Blue	
NATIVE - GRASSES/SEDGES				
River Oats/Northern Sea Oats	Chasmanthium latifolium	3-4'	Grass	
Little Blue Stem	Schizachyrium scoparium	2-3'	Grass	
Prairie Dropseed	Sporobolus heterolepis	2-3'	Grass	
Side Oats Gramma	Bouteloua curtipendula	1-3'	Grass	

NATIVE - SMALL SHRUBS				
White Snowberry	Symphoricarpos albus	3-5'	White	35
Black Chokeberry	aronia melanocarpa	3-6'	White	35
Juneberry	amelanchier alnifolia	4-15'	White	35
Running Serviceberry	Amelanchier stolonifera	3-5'	White	35
Northern Bush Honeysuckle	Diervilla lonicera	1-3'	Yellow	35
Pasture Rose	Rosa carolina	2'	Pink	35
New Jersey Tea	Ceanothus americanus	3'	White	35
Shrubby St. Johns Wort	Hypericum prolificum	4'	Yellow	35
Sweet Fern	Comptonia peregrina	2-5'	Green/Bronzey Brown	
Lead Plant	Amorpha canescens	3'	Purple	35
Shrubby Cinquefoil (Potentilla)	Dasphora fruticosa	204'	Yellow	35
All other shrubs				20

Minimum size at time of planting
2 feet in height or 2-gallon pot

Descriptions and Standards for Rain Gardens and Bioswales

Rain gardens and bioswales can serve both as landscaping and stormwater management features on a building site, where appropriately designed and sited.

A rain garden is a shallow, depressed garden that is designed and positioned on a site to capture stormwater runoff and allow for the infiltration of water back into the ground. Rain garden plants are carefully chosen for their ability to withstand moisture extremes and potentially high concentrations of nutrients and sediments that are often found in stormwater runoff. A well designed and maintained rain garden serves as an attractive component of an overall landscaping plan for a development site.

A bioswale is a linear, vegetative stormwater runoff conveyance system that is designed to store and infiltrate water from small storm events back into the ground and direct water from heavy rain events to appropriate storm sewer inlets or other management facilities. The flow of water being conveyed through a bioswale is slowed down, allowing for municipal storm systems to more effectively manage heavier rain events and help reduce the risk of flooding on or off-site. Water being infiltrated or conveyed via a bioswale is also filtered by the vegetation within it, generally improving both ground and surface water quality.

The installation of a rain garden or bioswale may contribute to the overall stormwater management plan for a development site and count toward meeting the City's landscaping guidelines in the same manner as that presented for "perennial planting bed" in Figure 3 above (20 points for every 20 sq. ft.), provided that:

1. Detailed plans are provided that show all proposed dimensions of the rain garden including length, width, depth, and slope of depression; location of the rain garden on the lot relative to hard-surfaced areas, downspouts, and site topography; characteristics of the soil underlying the rain garden or bioswale; description of planting media; the species, number, and size at the time of installation of all vegetation proposed for the rain garden or bioswale; and information of any other materials, (e.g., rocks) that will be used to line the rain garden or bioswale.
2. Installation is not proposed for areas where there is known soil contamination unless the rain garden is proposed to be constructed with an under-drain; where the characteristics of the soil would not allow for the proper infiltration of water into the ground; or where there are expected high levels of foot traffic.
3. The owner can demonstrate that the rain garden or bioswale will be properly maintained; kept free of trash, weeds debris, and dead or dying plants; any pipes associated with the garden will be inspected on an annual basis and kept free of debris; and by the beginning of every spring dead plant materials will be cut back or removed.
4. Bioswales and rain gardens must be generously (and appropriately) vegetated to qualify for landscaping points. Bioswales and rain gardens (or portions thereof) that are lined with turf and/or rocks do not include other vegetation will not qualify for landscaping points.
5. To serve as a component of an overall stormwater management plan for a site, detailed plans, calculations, and specifications meeting the City's stormwater management

ordinance are provided. Detailed plans should include the location and description of all other stormwater management facilities serving the site, particularly those to which any bioswale will be directed.

For further information on rain garden and bioswale design:

<https://dnr.wisconsin.gov/sites/default/files/topic/Stormwater/RainGardenManualPrint.pdf>

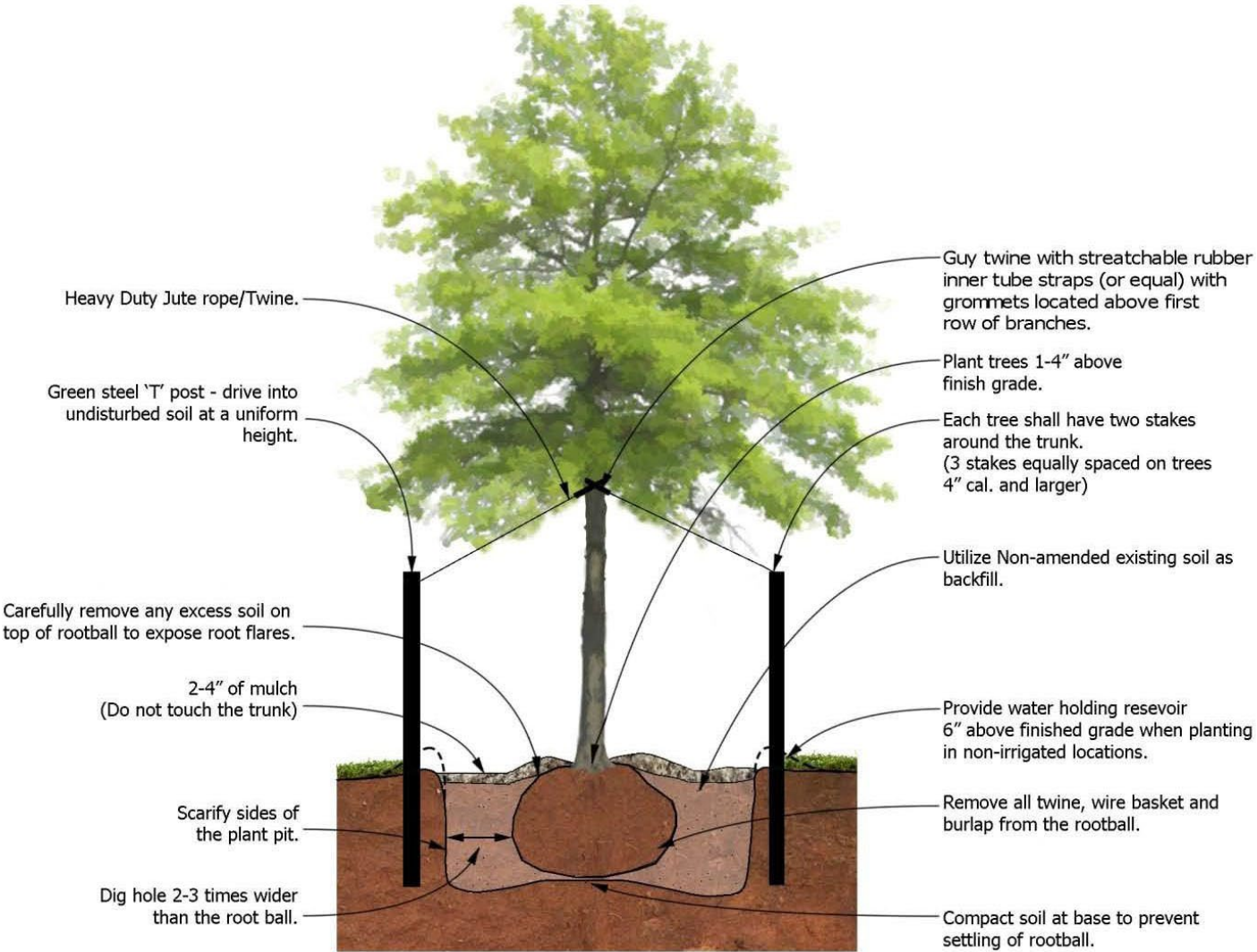
General Installation and Maintenance for Landscaping and Buffer Yards

Landscaping must be installed using landscape contracting industry standards available from landscape designers and nurseries. These include proper soil conditioning, removing any packing materials including wire cages, burlap, and string, and the placement of the root collar at or slightly above grade. A six-foot bark mulch radius around a tree is ideal, with the mulch no thicker than four inches in general and tapered to a depth of one inch at the base of the tree (the classic saucer shape). Rock mulch is discouraged around all planting areas. Figure 4 shall be proper planting and maintenance techniques for deciduous trees; techniques for evergreen trees and shrubs vary slightly, but the basic principles are similar.

All landscaping must be installed prior to building occupancy or operations, unless doing so would result in unsatisfactory plant survival. In this case, the City requires a site improvement deposit until landscaping is installed according to the plan.

All required landscaping should be continually maintained in a live state to meet its original function (e.g., screen plants not overly pruned). Maintenance must include replacement of dead or dying plants, regardless of when the plant dies. Replacement should occur within the same year in which a plant dies or the next spring.

Figure 4: Deciduous Tree Planting Standard



SCORING LANDSCAPING PROPOSALS

IMPORTANT: ADDITIONAL DOCUMENT (INCLUDING MAP) NEEDED DETAILING PRE-DEVELOPMENT CONDITIONS, SOILS AND VEGETATION - POINTS ASSIGNED FOR MATURE TREES 4" CALIPER AND OVER AND NOTABLES)

REQUIRED FOR PLANS

Scale: North Arrow Date Accurate Representation of Conditions
 Inventory: Removed Tree over 4" caliper, and their associated woodlands, Existing Trees over 4" caliper
 All trees and other plantings are to remain and must be protected in construction

Record: Large, high quality trees proposed for removal: Note: Equivalent diameter should be included in plan showing replacement of trees of similar quality and equivalent total diameter (4 x 4 diameter hardwood to replace 1 x 12 diameter hardwood either removed or lost in construction.

Green space: specify coverage - report mulch, etc.

Calculations may be completed by filling in the Orange Square below. All measurement in feet.

PAVED AREA				
Length	Width	Total Area	Required Points	NOTE: 1500 sq. ft. = 5 parking places plus driveway. Tree islands each end of 20 parking spaces (4 trees) same
1	98174	98174	3927	

FOUNDATION AREA				
Length	Width	Total Area	Required Points	160 points per 100 lineal feet for appropriate plantings within 20 feet of visible foundation (shrubs, groundcover, medium and small trees)
1	98174	98174	3927	

BUFFER				
Length	Width	Total Area	Required Points	160 points per 100 lineal feet for appropriate plantings within 20 feet of visible area (shrubs, groundcover, medium and small trees)
1	98174	98174	3927	

GENERAL YARDS				
Length	Width	Total Area	Required Points	
1	98174	98174	3927	

STREET Frontage & Total Trees Requirements				
	Street Frontage Length	Footage Per Length	Number of Trees per Street	Points Gained
Large Trees		35		0
Native Large Trees		45		0
Small Tree		35		0
Native Small Tree		45		0
POINTS PER PLANT Do not count the above Street Frontage Tree Requirements				

Type	Size	Point	Number	Total
Large Deciduous	Equal to or greater than 25 ft. 2" diameter @ chest	150		
Native	Equal to or greater than 25 ft. 2" diameter @ chest	165		
Small Deciduous	Less than 25 ft. 2" diameter @ chest	60		
Native	Less than 25 ft. 2" diameter @ chest	75		
Evergreen	10 to 4 feet tall	40		
Native	10 to 4 feet tall	55		
Shrub	2 foot or 2 gallons	20		
Native	2 foot or 2 gallons	35		
Perennial	20 points for 20 sq. ft.	20		
Native	20 points for 20 sq. ft.	35		
Note: Use with Whitewater Landscaping Guideline AND Nowak, M. Beyond the Bird Feeder, WSObirds.org		Number of Overall Points		

TOTAL REQUIRED	6167
-----------------------	-------------

TOTAL POINTS PER PROPOSED PLAN	
---------------------------------------	--

<p>If the maximum number of points can not be met, the applicant may have the option to donate the difference to the Whitewater Tree Fund. Each point under will be the equivalent of \$1.00.</p>	
---	--