



SPECIAL TOWNSHIP BOARD MEETING
LOCATION: 7527 HIGHLAND ROAD, WHITE LAKE - ANNEX BOARD ROOM
TUESDAY, NOVEMBER 28, 2023 – 6:00 PM

White Lake Township | 7525 Highland Rd | White Lake, MI 48383 | Phone: (248) 698-3300 | www.whitelaketwp.com

AGENDA

1. **CALL TO ORDER**
2. **PLEDGE OF ALLEGIANCE**
3. **ROLL CALL**
4. **APPROVAL OF AGENDA**
5. **PUBLIC COMMENT**

6. **PRESENTATION**
 - A. DEVELOPMENT PLAN AND TAX INCREMENT FINANCING PLAN FOR THE WHITE LAKE TOWNSHIP CORRIDOR IMPROVEMENT AUTHORITY

7. **PUBLIC HEARING**
 - A. [TO HEAR PUBLIC COMMENT ON THE DEVELOPMENT PLAN AND TAX INCREMENT FINANCING PLAN FOR THE WHITE LAKE TOWNSHIP CORRIDOR IMPROVEMENT AUTHORITY](#)

8. **NEW BUSINESS**
 - A. [RESOLUTION #23-040; APPROVING THE WHITE LAKE TOWNSHIP CORRIDOR IMPROVEMENT AUTHORITY DEVELOPMENT AND TAX INCREMENT FINANCING PLAN](#)

9. **ADJOURNMENT**

Procedures for accommodations for persons with disabilities: The Township will follow its normal procedures for individuals with disabilities needing accommodations for effective participation in this meeting. **Please contact the Township Clerk's office at (248) 698-3300 X-164 at least three days in advance of the meeting.** An attempt will be made to provide reasonable accommodations.

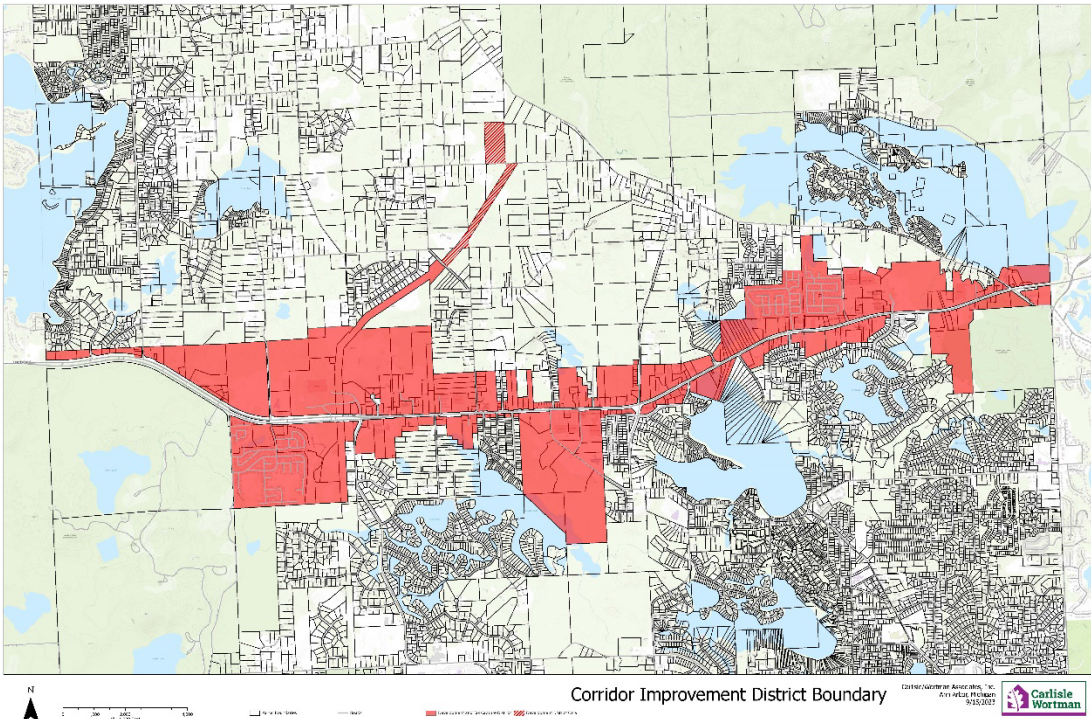
NOTICE OF PUBLIC HEARING
White Lake Township Corridor Improvement Authority
Development and Tax Increment Financing Plan Approval

The Board of Trustees of the Charter Township of White Lake, Oakland County, Michigan, will hold a Public Hearing on:

Tuesday, November 28th, 2023 at 6:00 p.m.

Please note change in date & time

At the White Lake Township Annex Building, 7527 Highland Rd., White Lake, MI 48383, to receive comment on the approval of the White Lake Township Corridor Improvement Authority Development and Tax Increment Financing Plan in accordance with Public Act 57 of 2018. The boundaries of the Corridor Improvement Authority Tax Increment Finance District area are depicted below:



The Board will hear comments from citizens, taxpayers and property owners, officials from any affected taxing jurisdiction and any other interested persons on any aspects of the Plan. Any further information regarding the above Public Hearing, including: (a) a description of the proposed development area in relation to highways, streets, streams, or otherwise; (b) maps, plats, and a description of the development plan, including the method of relocating families and individuals who may be displaced from the area, are available for public inspection at a place designated in the notice; (c) all aspects of the development plan that will be open for discussion at the public hearing; and (d) other information that the governing body considers appropriate, may be obtained at the Township Clerk’s Office during regular office hours 8:00 a.m. to 5:00 p.m. Monday through Friday, or by phone at (248) 698-3300. Individuals needing assistance or aid to attend the meeting should contact the Township Clerk at least 5 days prior to the meeting in writing or by calling 248-698-3300 ext. 7.

Anthony L. Noble, Clerk
Charter Township of White Lake
Oakland County, Michigan

WHITE LAKE TOWNSHIP

COMMUNITY DEVELOPMENT DEPARTMENT

DATE: November 20, 2023

TO: Rik Kowall, Supervisor
Township Board of Trustees

FROM: Sean O'Neil, Community Development Director



SUBJECT: Corridor Improvement Authority, Tax Increment Financing Plan

As you are aware, the Township has established a Corridor Improvement Authority (CIA) to assist in improving and revitalizing the M-59 corridor. The CIA has been tasked with creating a Development Plan and Tax Increment Financing Plan (TIF Plan). As the CIA has worked through this process, they have identified specific development areas, public improvement projects, recommendations, and strategies to achieve these goals. The establishment of the CIA and TIF Plan will be consistent with the Recodified Tax Increment Financing Act – PA 57 of 2018.

On August 3rd the CIA held a meeting to consider the draft TIF Plan, and accepted input and recommendations from the Citizens Advisory Council. After much review and discussion, the CIA recommended adoption of the TIF Plan to the Township Board. Since that recommendation was made in August, the staff has worked with our consultants to meet or exceed all of the publication and notification requirements within PA 57 or 2018. The TIF Plan is now ready for your formal consideration. Prior to adoption of the TIF Plan, the Board must hold a public hearing. For your reference, Resolution #23-040, approving the development and tax increment financing plan, is attached.

I look forward to discussing this matter with you at the November 28th Township Board meeting. If you have any questions, or require additional information, please do not hesitate to contact me.

Thank you.

STATE OF MICHIGAN
COUNTY OF OAKLAND
CHARTER TOWNSHIP OF WHITE LAKE
RES #23-040

A RESOLUTION APPROVING THE WHITE LAKE TOWNSHIP CORRIDOR
IMPROVEMENT AUTHORITY DEVELOPMENT
AND TAX INCREMENT FINANCING PLAN

November 28, 2023

At a Special Meeting of the Charter Township of White Lake Board held on November 28, 2023, at 6:00 pm the following Resolution was passed:

Moved by: _____
Seconded by: _____

WHEREAS, On October 17, 2006, the White Lake Charter Township Board of Trustees, pursuant to the Corridor Improvement Authority Act, PA 280 of 2005, established the White Lake Township Corridor Improvement Authority to revitalize and redevelop its commercial and business corridors and to promote economic growth within the Corridor Development District (the “District”); and

WHEREAS, Section 611 of Part 6 of the Recodified Tax Increment Financing Act, PA 57 of 2018 (the Act) authorizes a Corridor Improvement Authority to implement plans and programs in the District necessary to achieve the purposes of the Act; and

WHEREAS Sections 618 and 621 of Part 6 of the Act authorizes a Corridor Improvement Authority that finds it necessary for the achievement of the purposes of the Act to prepare and submit a Development and Tax Increment Financing Plan (the “Plan”) to the governing body of the municipality; and

WHEREAS, The White Lake Township Corridor Improvement Authority Board has determined that the Plan is necessary for the best interests of the public to revitalize and redevelop the District; and

WHEREAS, Pursuant to the Act, the White Lake Township Corridor Improvement Authority Board has approved and recommends that the Township Board adopt the Plan; and

WHEREAS, The White Lake Charter Township Board of Trustees held a public hearing on the White Lake Township Corridor Improvement Authority Plan on November 28, 2023; and

WHEREAS, The Board of Trustees has considered the following factors in approving the Plan,

- (a) The Plan meets the requirements under section 620(2);

- (b) The proposed method of financing the development is feasible and the Authority has the ability to arrange the financing;
- (c) The development is reasonable and necessary to carry out the purposes of this Act;
- (d) The land included within the development area to be acquired is reasonably necessary to carry out the purposes of the Plan and of this act in an efficient and economically satisfactory manner;
- (e) The development plan is in reasonable accord with the land use plan of the municipality;
- (f) Public services, such as fire and police protection and utilities, are or will be adequate to service the project area; and
- (g) Changes in zoning, streets, street levels, intersections, and utilities are reasonably necessary for the project and for the municipality.

NOW THEREFORE BE IT RESOLVED that the White Lake Charter Township Board of Trustees hereby determines that the White Lake Township Corridor Improvement Authority Development and Tax Increment Financing Plan constitutes a public purpose.

BE IT FURTHER RESOLVED that the Board of Trustees approves the White Lake Township Corridor Improvement Authority Development and Tax Increment Financing Plan.

AYES:

NAYS:

ABSENT:

ABSTAIN:

I, Anthony L. Noble, duly elected Clerk of White Lake Township; do hereby certify that the foregoing constitutes a true and complete copy of a resolution adopted by the Charter Township of White Lake Board at a Special Meeting duly called and held on Tuesday, the 28th day of November 2023.

Anthony L. Noble, Township Clerk

Development Plan and Tax Increment Financing Plan for the White Lake Township Corridor Improvement Authority

White Lake Township
Corridor Improvement Authority

_____ 2023

Recommended by the Corridor Improvement Authority
Board on: August 3, 2023

Adopted by White Lake Township Board on: _____

ACKNOWLEDGEMENTS

Township Board

- Rik Kowall
- Andrea Voorheis
- Anthony Noble
- Liz Smith
- Michael Powell
- Mike Roman
- Scott Ruggles

Corridor Improvement Authority Board

- Rik Kowall
- Debbie Lennis
- Jim Christopher
- Rick Wakalet
- Tony Madaffer

Citizens Advisory Council

- Kristiana Kaufmann
- John M. Newberry
- Dale (Boomer) Ulman
- Sandra Ulman
- Shawn Austin
- Mary Kotcher
- Bruce Johnson

Township Staff

- Sean O’Neil, Community Development Director
- Justin Quagliata, Staff Planner

Assisted by: Carlisle/Wortman Associates, Inc.
Ann Arbor, MI

This page intentionally left blank.

TABLE OF CONTENTS

Section 1 Introduction

Introduction	7
Purpose of CIA Act	7
Actions of the Township to Date	8
Content of the Plan	9

Section 2 Development Plan

Description of Development Area	10
Existing Streets and Public Facilities	12
Existing and Proposed Land Uses	12
Zoning	18
Vision Statement	21
Goals and Priorities	21
Description of Improvements	22
Location, Extent, Character, Estimated Cost, and Timeline of Improvements	23
Statement of Construction	26
Open Space	26
Development Area Ownership and Tenure	26
Zoning Changes and Changes in Streets, Street Levels, Intersections, and Utilities	26
Proposed Method of Financing the Development	26
Lease, Sale, or Conveyance of Development	30
Residential Population and the Displacement of Persons	30
Development Area Citizens Advisory Council	31

Section 3 Tax Increment Financing Plan

Introduction	32
Explanation of the Tax Increment Procedures	32
Projection of Captured Assessed Values and Revenues	33
Use of Tax Increment Revenues	35
Statement of the Estimated Impact of Tax Increment Financing on Taxing Jurisdictions	36
Justification of the Tax Increment Financing Plan	36

Appendices

- | | |
|--|----|
| | 37 |
| 1. Parcel List of CIA Development Area | |
| 2. Historical Percent Change Real Property | |
| 3. White Lake Township Estimated Tax Capture of Corridor Improvement Authority | |

List of Figures

FIGURE 1	CIA Development Area and CIA Authority Boundary	11
FIGURE 2	Existing Land Uses	14
FIGURE 3	Planning Areas	15
FIGURE 4	White Lake Future Land Use	16
FIGURE 5	Corridor Improvement Area Existing Zoning	17

List of Tables

TABLE 1	Major Road Data	12
TABLE 2	Proposed CIA Projects	23
TABLE 3	Summary of Proposed Development Activities	28
TABLE 4	Millage Capture	33
TABLE 5	Estimated TIF Capture 2024 - 2043	35

Section 1

Introduction

The Charter Township of White Lake, located in Oakland County, is bordered on the east by Waterford Charter Township, on the north by Springfield Charter Township, on the west by Highland Charter Township, and on the south by Commerce Charter Township. The current population is 30,950 (2020 Census). The White Lake Township Corridor Improvement Authority (CIA) was created by the Township Board in October 2006. The CIA is governed by a Board of Directors whose primary purpose is to correct and prevent deterioration and promote economic growth within White Lake Township’s principal business district. Other purposes of a CIA include reversing declining property values, improving the overall business climate, and increasing employment opportunities.

A primary benefit of forming the CIA is the ability to capture the incremental increase in the property taxes that result from improvements in the development area. Local school taxes are not captured by the Authority. The captured revenues are used to finance public improvement projects within the development area, as a means for jump-starting economic growth.

A Corridor Improvement Plan is one tool the CIA relies on for achieving its purposes. The goals, objectives and recommended actions presented in this document are intended to plan and prioritize projects, such that the development, redevelopment and other improvements within the corridor occur in an orderly manner. Recommendations also ensure improvements match the available revenues and can enable the CIA to become eligible for other funding sources. The Plan was prepared in accordance with the Recodified Tax Increment Financing Act of 2018, Part 6 Corridor Improvement Authorities, which is the successor act to PA 280 of 2005.

PURPOSE OF CIA ACT

Both Part 6 of PA57 of 2018 (the “Act” or “Act 57”) and successor PA 280 of 2005 were enacted to provide a new community development tool designed specifically for the commercial corridors of Michigan. The Act allows communities to create “Corridor Improvement Authorities” with special powers, conditions, and criteria unique to commercial corridors. One of the chief features of a CIA is the ability to fund infrastructure improvements using tax increment financing, discussed more in depth later in this report.

The Act is intended to combat the deterioration of existing business districts and promote economic development efforts within the development area. Communities are permitted to create as many CIA’s as they wish, provided no single parcel is located within more than one CIA development area.

Another distinction of a CIA is the ability for municipalities to develop a single CIA development area for a corridor that is located in more than one community. Such benefits as continuity of appearance, uniformity of improvements and land use regulations, and cooperative traffic management are all potential benefits of multi-jurisdictional CIA’s development areas.

The CIA is granted specific powers and duties to empower it to accomplish its mission. These include, but are not limited to, the following:

PURPOSE OF THE CIA ACT (CONT)

- Acquire and construct public facilities, and improve public facilities to comply with barrier-free design requirements;
- Conduct analysis of economic changes in the development area along with impacts of metropolitan growth on the development area; and develop long range plans (in coordination with planning/building department) to halt deterioration of property values and promote economic growth;
- Implement any plans of development which achieve the purposes of the Act;
- Make and enter into contracts and acquire, own, convey, dispose of or lease all or part of land, real or personal property, or interests in property, grant or acquire licenses, easements, and options;
- Improve land, construct, re-construct, rehabilitate, restore, and preserve, equip, improve, maintain, repair, and operate any building, including multiple-family dwellings, of any public or private person or combination thereof;
- Accept grants and donations of property, labor, or other things of value and fix, charge, and collect fees, rents, and charges for the use of any facility, building or property under its control; and,
- Conduct market research and public relations campaigns, develop, coordinate, and conduct retail and institutional promotions, and sponsor special events and related activities.

ACTIONS OF THE TOWNSHIP TO DATE

The White Lake Township Corridor Improvement Authority was originally established on October 17, 2006, when the Township Board adopted a Corridor Improvement Authority Ordinance. Although a Corridor Improvement Plan was prepared, the Township Board took no further action to formalize the Authority. The CIA remained inactive until the latter part of 2022 when the Township Board moved to resurrect the CIA and hired a consultant to begin the process of updating the Development and Tax Increment Financing Plan for the Corridor. On January 17, 2023, the Township Board approved the Township Supervisor's recommendations and appointed a five-person Corridor Improvement Authority Board. Minor amendments to the Corridor Improvement Authority Ordinance were adopted by the Township Board on May 16, 2023. With more than one hundred residents in the Development Area, the Township Board also established a Citizens Advisory Council (CAC).

The boundaries of the CIA development area are identified in Figure 1 found on Page 11 which follows, and the parcel list is in Appendix 1.

CONTENT OF THE PLAN

The CIA Plan consists of two (2) components required by Part 6 of Act 57, as amended: the Development Plan and the Tax Increment Financing Plan. The Development Plan includes specific programs, projects, and strategies the CIA intends to pursue for the revitalization of underutilized properties, improve visual appearance, and encourage new investment in the development area. The Tax Increment Financing (TIF) Plan provides the legal foundation for funding these improvements within the development area.

Section 2

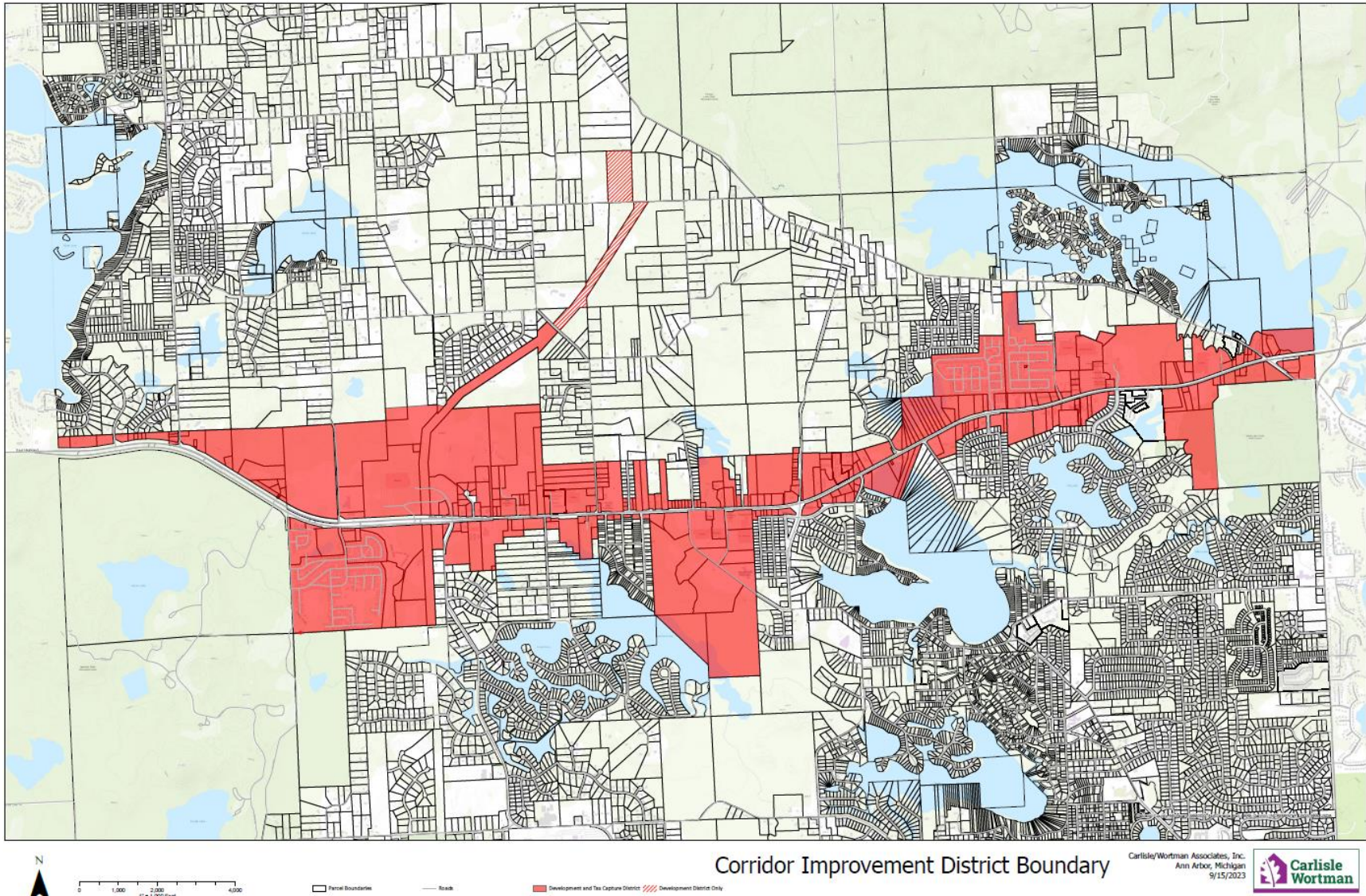
Development Plan

DESCRIPTION OF DEVELOPMENT AREA

Designation of Boundaries of the Development Area in Relation to Highways, Streets, Streams, or Otherwise

The White Lake Township CIA has been given the authority by the Township Board to operate within the boundaries identified in Figure 1. In general, the Corridor District includes all properties with frontage along M-59 (Highland Road) from the boundary of Highland Charter Township to the west and Waterford Charter Township to the east. The development area abuts several land use designations and is located within the areas identified in the Township Master Plan as the Highland West, Lakes Village and Highland East Planning Areas. These areas are connected via the M-59 Corridor and shown on Figure 3.

FIGURE 1. CIA Development Area and CIA Authority Boundary



Existing Streets and Public Facilities

The predominant roadway within the development area is M-59 (Highland Road) with prominent intersections at Teggerdine Road, Ormond Road, and Elizabeth Lake Road. M-59 is a state trunkline under the administration of the Michigan Department of Transportation (MDOT). Teggerdine Road, Elizabeth Lake Road and Ormond Road all serve as primarily north / south collectors and minor arterials as shown below. Interstate and Highway access is supported by US-23 to the west and I-75 to the north.

The National Functional Classification System designates majors roads within the development area as:

- M-59 / Principal Arterial
- Teggerdine Road / Collector
- Elizabeth Lake Road / Minor Arterial
- Ormond Road / Minor Arterial

Public Facilities include the White Lake Township Hall and Police Department, Library, three Fire Stations, the Dublin Community Senior Center, six Township parks, Town Center, and several urgent care centers. The nearest major hospital is Detroit Medical Center Huron Valley-Sinai Hospital which is approximately two miles south of the Township’s southern border.

TABLE 1: Major Road Data

Road	Segment	Traffic Volumes / Average Daily Trips (ADT)
M-59 / Highland Road	Teggerdine Rd. intersection	32,800 (2019)
	Elizabeth Lake Rd. intersection	31,300 (2015)
	Ormond Rd. intersection	17,300 (2021)

Source: SEMCOG AADT Traffic Tool

Existing and Proposed Land Uses

M-59 is a major entry point to White Lake Township from areas to the east and west. Historically, uses along the corridor have been commercial / office, institutional, industrial, agricultural, mobile home parks, multi-family, and various densities of single family residential. Undeveloped land still exists along portions of the corridor as shown in Figure 2.

Commercial use varies from big box and retail mall establishments to local business services. Portions of the corridor are utilized by public facilities and religious institutions. Residential uses range in the form of single and multiple-family residential as well as mobile home parks. Industrial uses are sparse and of lighter intensities. In general, the condition of all uses along the corridor look to be either newer development in good condition or older/original development showing signs of age.

The Township Master Plan places greater emphasis on planned uses along M-59 as well as sustainable development practices, natural feature conservation, infrastructure, and open space throughout the Township. The Master Plan also segments the community into several Planning Areas as shown on Figure 3. Within these Planning Areas are specific Area Plans which are created to highlight certain locals within the greater community that provide unique opportunities to spur economic development, correct blight or fill specific communal needs. These Area Plans, titled Four Towns, Lakes Town Center, Pontiac Lake Gateway, and Elizabeth Lake Road / Union Lake Road. The Master Plan outlines where there are areas for development and redevelopment opportunities, provides specific recommendations and encourages new investment that will gradually shape the appearance and character of the Township.

Regarding the development area, the current Master Plan recognizes the need for more uses to accommodate the higher demand for investment along the M-59 corridor. Figure 4 presents the future land use concepts within this geography as shown in the Township Master Plan.

FIGURE 2. Existing Land Uses

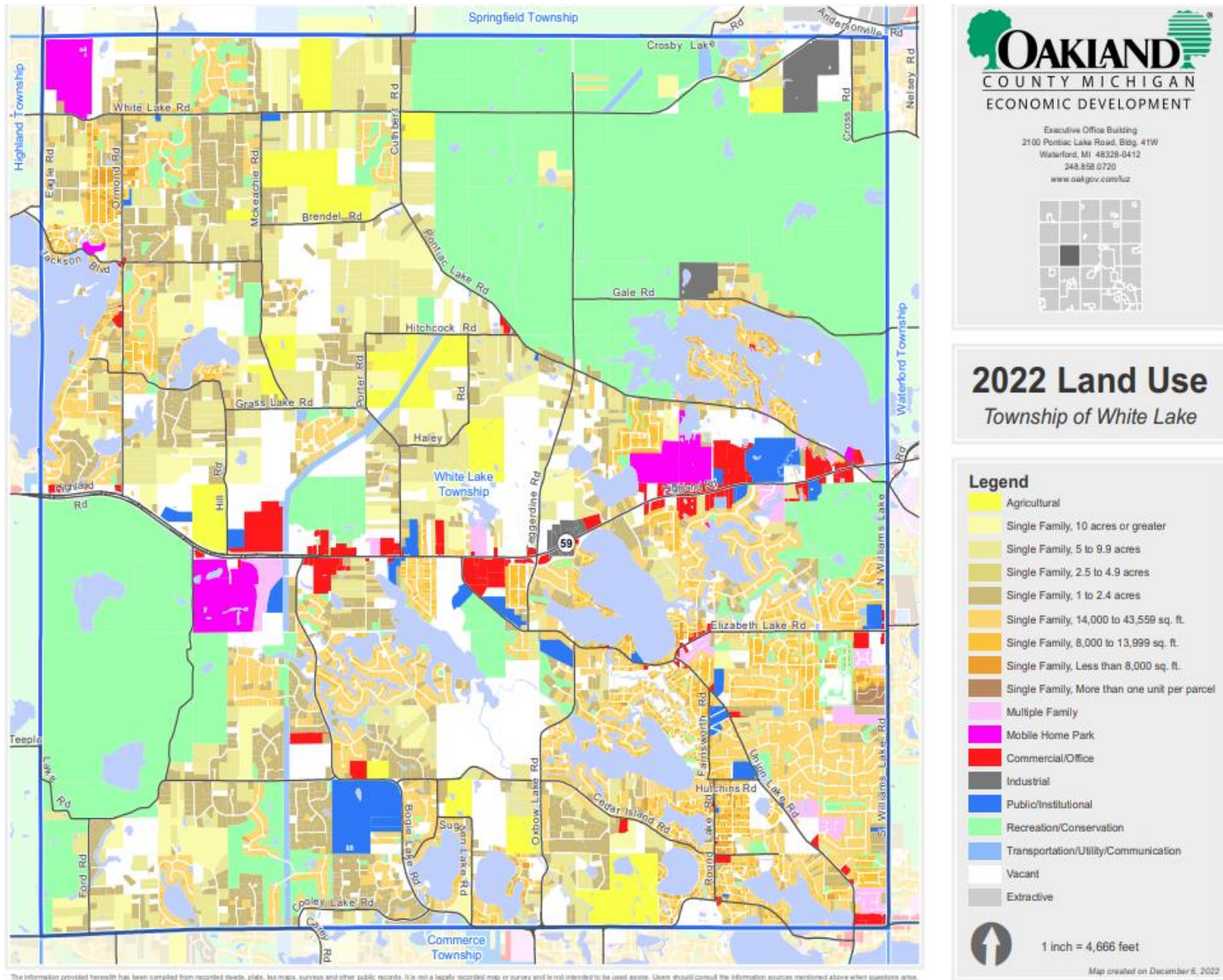


FIGURE 3. Planning Areas

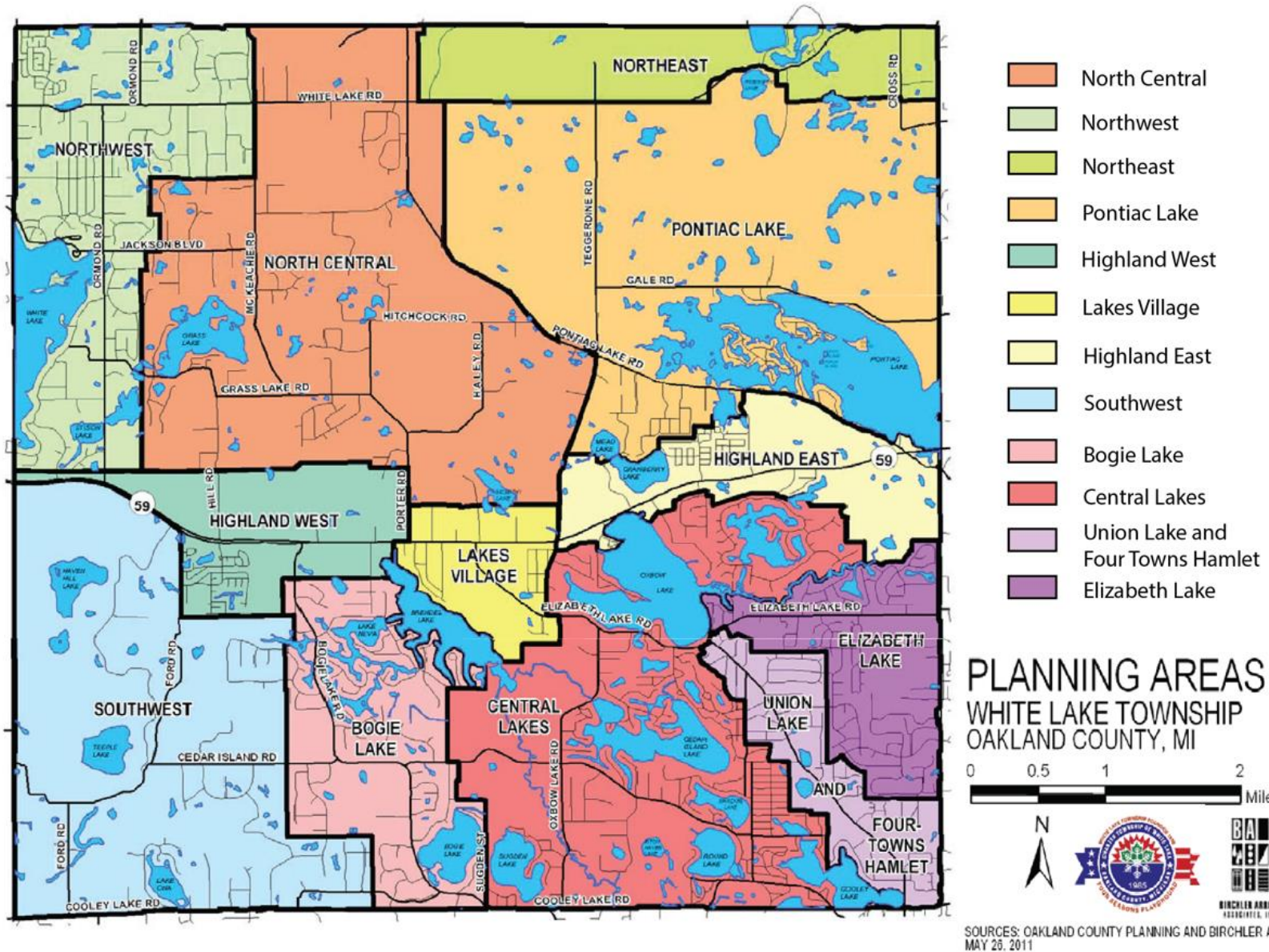


FIGURE 4. White Lake Future Land Use

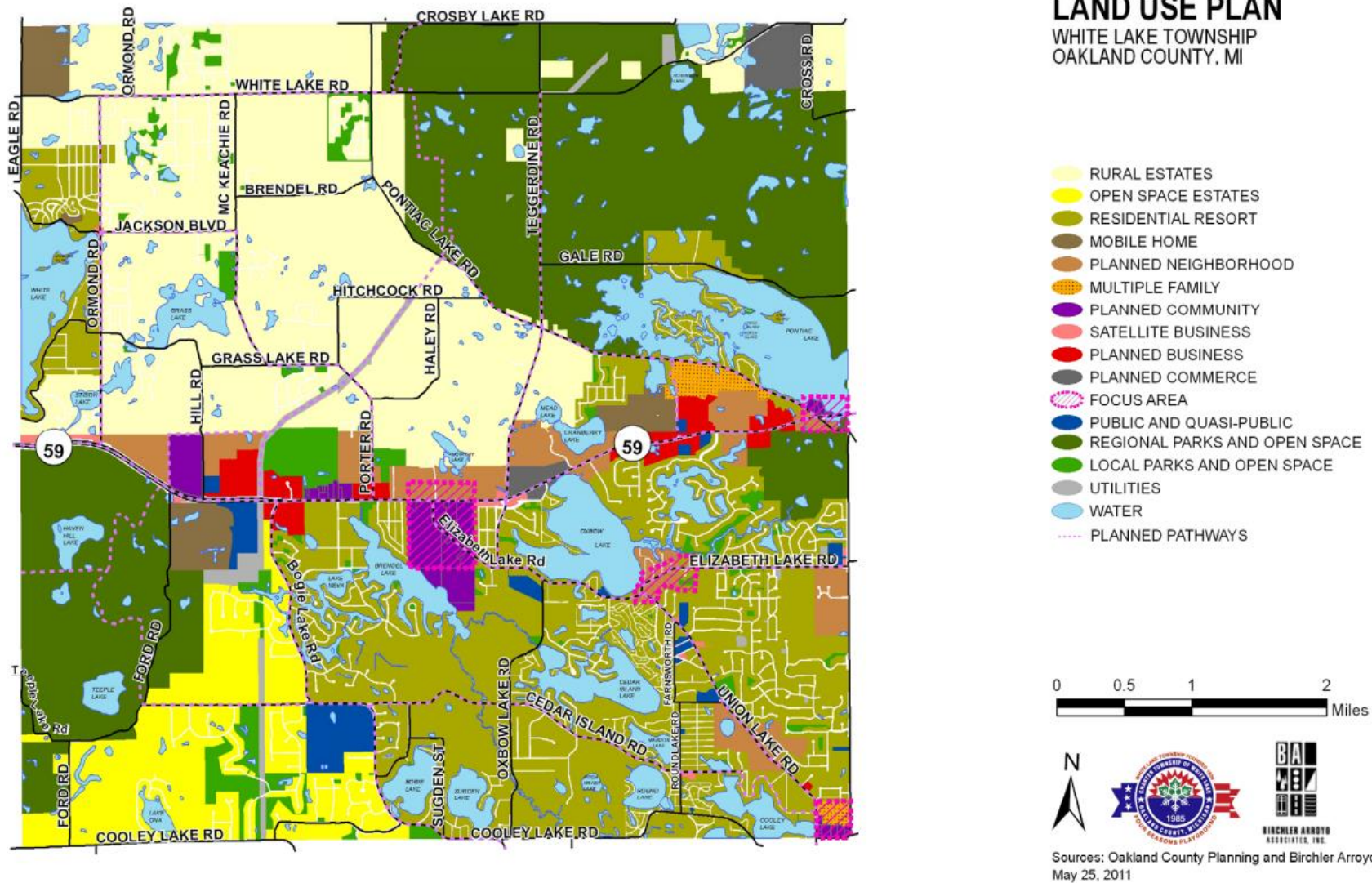
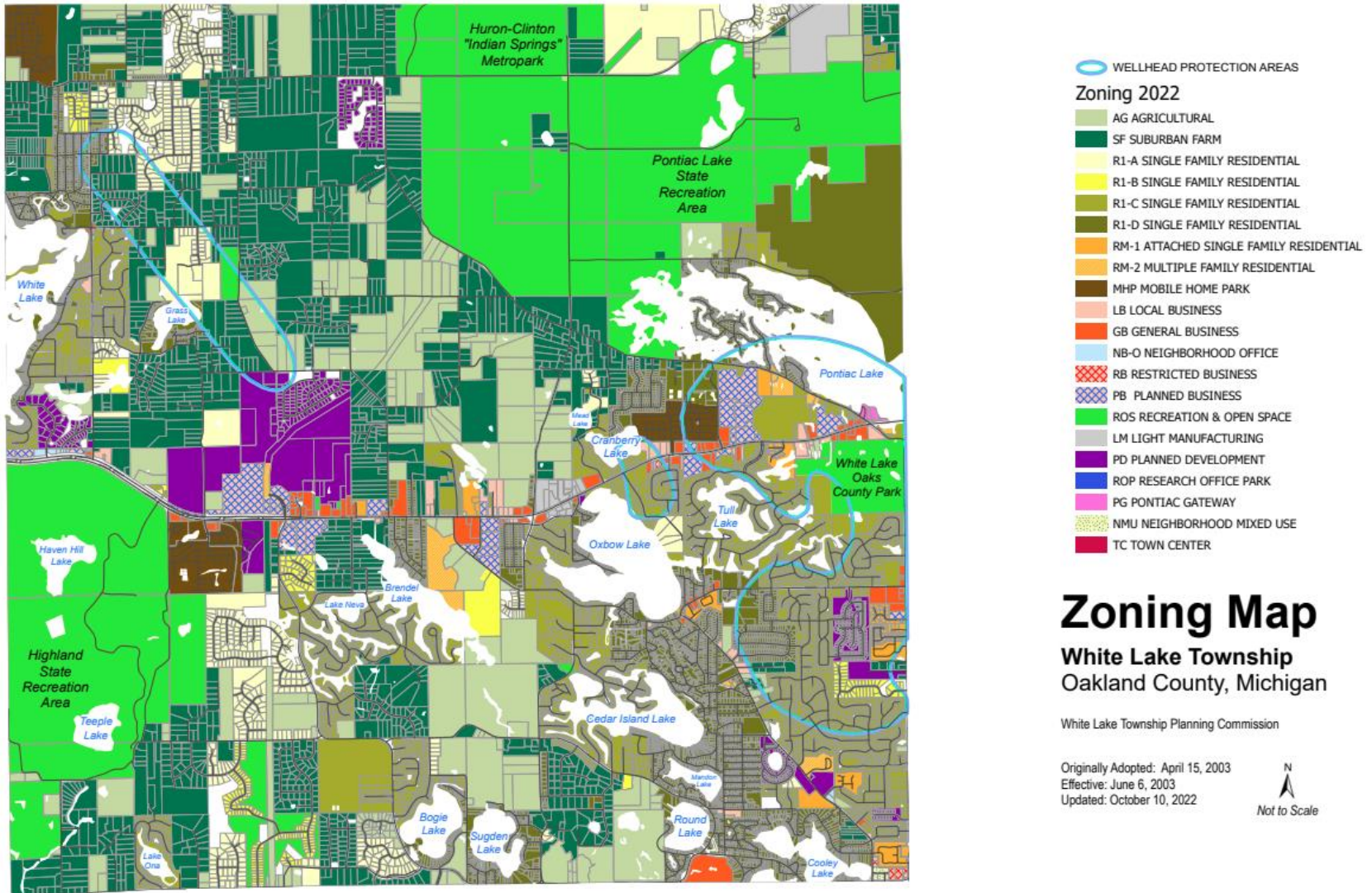


FIGURE 5. Corridor Improvement Development Area Existing Zoning



Zoning

There are numerous existing zoning districts represented in the Development Area, as illustrated in Figure 5. The following describes the purpose and intent of each designation represented in the Development Area.

- AG / Agricultural – The Agricultural District is established as a district in which the principal use of land is for farming, dairying, forestry operations and other agricultural activities. The intent of this article is to protect land needed for agricultural pursuits from encroachment by untimely and unplanned residential, commercial, or industrial development.
- SF / Suburban Farms - The Suburban Farms District was created to establish areas of the Township for single family residences in a rural environment characterized by low densities and significant open spaces.
- R1-B, C&D / Single Family - The Single-Family Residential Districts are established as districts in which the principal use of land is for single family dwellings, located in neighborhoods that include open space and that preserve sensitive natural environmental features.
- MHP / Mobile Home Park - The Mobile Home Park District is for areas of the Township suitable for mobile home parks. For the Mobile Home Park District, in promoting the general purpose of this ordinance, the specific intent of this Article is: A)- To require adequate space and facilities for healthy living conditions for occupants of such mobile home parks so as to maintain the residential character of the area. B)- To require all such districts to have access to a major thoroughfare for easy accessibility. C)- To ensure suitable water and sewer facilities would be provided in accordance with state, county and township health regulations and statutes. D)- To provide for the development of mobile home parks for long-term residential use.
- RM-1 / Attached Single Family - The Attached Single-Family Residential District is designed to permit various attached single-family dwellings including row or townhouse dwellings and two-family or duplex dwellings. These areas should be located near shopping, community services and facilities, and major roads for good accessibility.
- RM-2 / Multiple Family Residential - The Multiple-Family Residential District is designed to permit a more intensive residential use of land with various types and sizes of multiple-family dwellings, two-family dwellings, apartments and convalescent or nursing homes. These areas should be located near shopping, community services and facilities, and major roads for good accessibility.
- PD / Planned Development – The Planned Development District is intended to provide for the location and various types of planned land use on large parcels held in common ownership and includes such alternate terms as cluster zoning, planned development, community unit plan, planned residential development and other similar terminology. Uses planned may include single-family detached housing, single-family attached housing, multiple-family housing, local commercial business, office uses, and similar activities. The PD District is intended to result in a unique, planned development that includes such techniques as open space preservation. A public hearing shall be held prior to formal consideration of the PD.

- NB-O / Neighborhood Office - The Neighborhood Office District permits those office and service uses which are compatible in intensity and character with nearby residential areas. The intent of this article is to encourage well-designed office buildings, employing high quality architecture, in a professionally landscaped setting, as well as uses which will not cause large volumes of traffic, traffic congestion, or parking problems. These uses will be designed and constructed to fully complement and enhance the adjoining or nearby residential areas.
- LB / Local Business - The Local Business District is intended to be that district permitting retail business and service uses which are needed to provide for the day-to-day needs of the nearby residential areas. The specific intent of the Local Business District is: A)- To encourage the concentration of local business uses in certain strategic locations to the mutual advantage of both the consumers and merchants and to avoid the continuance of marginal strip business development along major streets. B)- To prohibit uses that would create hazards, offensive and loud noises, dust, dirt, smoke, odor, glare, vibrations, or excessive truck traffic.
- GB / General Business - The General Business District, as established in this article, is intended to permit a wider range of business activities than those permitted in the Local Business and Restricted Business districts. The specific intent of this article is to allow those uses which would not only serve nearby residential areas, but also the entire community's comparison business, offices, services, and automotive service needs, including open-air sales and uses requiring location on a major highway or street. These uses would generate larger volumes of vehicular traffic, would need more off-street parking and loading, and would require more detailed planning to provide an appropriate transition between such districts and adjacent residential areas.
- PB / Planned Business - The PB Planned Business District is primarily a commercial district intended to permit, with Township approval, private and/or public development in a coordinated and cohesive arrangement which may be more difficult to achieve under more conventional, piecemeal development designed to conform with standard zoning requirements. To that end it becomes possible to permit greater flexibility in the types of land uses, land use arrangements and development requirements than would otherwise apply. It is further intended that the PB District be located along major thoroughfares, such as M-59, as opposed to locations in residential neighborhood areas where conflicts of land uses may arise more easily.

Development standards, as approved in a development plan, in this district shall result in a project that is superior to one constructed under standard zoning requirements and shall be mutually acceptable to the applicant(s) and the Township. Therefore, any PB Plan shall be substantially consistent with the Township Master Plan, desirable principals of land use planning, zoning ordinance standards and other applicable development requirements. To achieve these objectives, approval of a PB development requires approval of both a Site Plan and PB Agreement which sets forth specific physical, functional, amenity and design features and other related requirements considered essential to the development.

- PG / Pontiac Lake Gateway - The Pontiac Lake Gateway sub-district is intended to create a unique gateway into White Lake Township, enhancing the views of Pontiac Lake and White Lake Oaks Golf Course and reinforcing the appeal of the Township as a "four seasons playground." Properties located in this area, adjacent to the state trunkline, may accommodate greater height and more intense land activity than elsewhere in this otherwise low-density community. This district will allow flexibility in the redevelopment of property along Highland Road (M-59), encourage pedestrian-oriented design, provide a unique identity to this region of the Township, and be compatible with existing residential, institutional, and recreational uses.

- ROS / Recreation and Open Space - The Recreation and Open Space District is intended to provide areas for the development of public and private outdoor recreation facilities and open space preservation uses. The intent of the Recreation and Open Space District is: to encourage recreational uses of an outdoor nature that will take full advantage of the land in its natural state; and to encourage those large outdoor recreation uses that could not easily be provided in the already urbanized portions of White Lake Township and the metropolitan area.

- LM / Light Manufacturing - The LM, Light Manufacturing District is established as a district in which the principal uses allowed are light manufacturing, fabrication, processing, wholesale activities or warehousing activities. The intent of this article is to control nuisance effects of warehousing, wholesale activities, open storage, and light industry such as smoke, noise, odor, dust, dirt, glare, vibrations, and other adverse effects so that such uses could be compatible with other nearby land uses such as commercial or residential. The light manufacturing district encourages uses to locate on major highways so that traffic generated by these uses would not utilize local residential streets.

VISION STATEMENT

Public investment brought about by the Corridor Improvement Authority will attract private development and redevelopment that promotes the White Lake Township “Four Season’s Playground” concept. The M-59 / Highland Road Corridor will become a destination for world-class recreational opportunities. The uses along the corridor act as a lifeline to the community’s many lakes, natural areas, and parks. Residents and visitors know when they’ve arrived in White Lake, because of the consistent use of high-quality, unique materials and environmentally friendly landscaping that reflects a hardy resort atmosphere. An interconnected network of pathways and equestrian trails draw people to the out-of-doors. Distinct nodes of activity will feature retail, dining, entertainment, or lodging experiences, while providing employment and an increased tax base. Enhanced transit stops and transit-oriented development will support the long-term development and sustainability of the corridor.

GOALS AND PRIORITIES

The overall goal of the White Lake Township Corridor Improvement Authority is to improve and encourage the long-term economic viability of the development area. The projects and improvements outlined in this Development Plan are designed to nurture the necessary physical, economic, and social environment which will enable White Lake Township to protect existing investment, attract new development, and stimulate the revitalization of properties within the development area. Furthermore, the goal is to foster a mix of uses that both serve the surrounding neighborhood and attract regional visitors to the Township.

Physical Environment

- Support infrastructure improvements necessary to ensure that existing businesses can expand, and new businesses develop in the development area.
- Promote environmental awareness in the design and implementation of improvements.
- Encourage good design, architectural compatibility, color coordination, high-quality materials, consistent building orientation, and façade articulation that contribute to a cohesive and inviting corridor.
- Promote streetscape improvements, outdoor seating areas, pathways, bike racks and other measures that will make the development area a comfortable place to visit and will encourage the neighborhood residents to walk or bike to commercial offerings.
- Create new opportunities for transportation options linking residential communities with public and recreational facilities.
- Incorporate enhanced facilities that will serve transit and identify nodes for transit-oriented development.

Economic Environment

- Undertake projects and programs which are designed to create a corridor with a competitive advantage that is attractive to owners and investors and offers quality customer environment and healthy business mix.
- Support financing of projects by leveraging TIF dollars with Federal and State grants, State tax incentives, Township funds and private investment.
- Retain the economically viable businesses which presently exist and encourage their expansion.
- Provide economic development support to businesses and potential developers.

Social Environment

- Promote a positive and welcoming image of the corridor that fosters cooperation between the public and private sector.
- Distribute promotional materials and maintain online resources and tools for living, working, and doing business in the district.

DESCRIPTION OF IMPROVEMENTS

The Development Plan for the White Lake Township Corridor Improvement Authority includes projects and programs which will fulfill the priorities and objectives of this Plan. The following projects directly impact the physical environment to increase investment in the development area, improve the visual image of the development area, and enhance the overall economic and social environment. The programs are intended to create a stable economic and social environment for sustained investment in the development area.

Projects and Programs

- Branding
- Development area entryways and wayfinding.
- Streetscape improvements including landscaping, trees, flower planters, plazas, trash receptacles, and other amenities.
- Pathways and pedestrian improvements including sidewalks, bike racks, pedestrian lighting, and seating.
- Enhanced transit stops / TOD / Designated Transit Routes.
- Traffic safety improvement.
- Extension of sewer and water utilities to unserved areas including tap fee assistance.

- Economic development assistance including façade improvement programs, site circulation, access management, and utility tap fee assistance, particularly focused on redevelopment of substandard and underutilized properties.
- Property / Easement Acquisition needed to implement anticipated improvements.

The duration of this program will be for twenty (20) years and will conclude with a final capture of tax increment revenues on December 31, 2043, and expenditure of those revenues by December 31, 2044. Projects and programs will be undertaken based on the ability of the CIA to finance such. It is recognized by the CIA that the projects listed may be beyond the scope of the CIA to complete with its own limited resources. Public-private partnerships as well as State and Federal grant assistance may be necessary to implement all of the above-mentioned items.

LOCATION, EXTENT, CHARACTER, ESTIMATED COST, AND TIMELINE OF IMPROVEMENTS

The CIA is positioned to fund small scale improvements as well as projects related to marketing, planning, and operations. There are no plans for large scale construction projects; however, the CIA may provide economic development services and support to private redevelopment, particularly where other funding can be leveraged. The following projects on Table 2 represent the scope of potential projects that will accomplish the objectives of the CIA and the Development Plan and Tax Increment Financing Plan. A description of each project is provided below as well as the estimated cost and year of completion.

TABLE 2: Proposed CIA Projects

Branding	2024 – 2025	\$75,000 - \$100,000
<p>A branding process creates a distinct identity to be established for the District as the Township and CIA promotes the area as a community center and an area of regional appeal and business attraction. Branding of the District will also set the themes of other visual improvements, gateway signage, marketing, and wayfinding so that a consistent message is conveyed. While branding the District should be distinct, it should also tie into Township identification as a “Four Season Playground.” This effort will be undertaken in conjunction with several other Township boards.</p>		
Entryway and Wayfinding Signage	2027-2029	\$250,000 - \$400,000
<p>The project would include wayfinding that would direct visitors within the district to the Town Center, Gateway district, parks, community buildings, and other points of interest. Wayfinding signage will reflect the theme created through the branding process. To reinforce the identity of the Township and District, identification signage will be erected at key entry points in the Township.</p>		

Streetscape Improvements	2030-2032	\$2,000,000 - \$2,500,000
<p>This project involves enhancements to the streetscaping, including gateway improvements in the Development Area. Proposed improvements may include unifying elements via a streetscape plan which would include landscaping of street frontages, public spaces and art, seasonal displays, design elements and sound buffers. A key objective of streetscape improvements is to provide a visual connection between M-59 and other significant roadway corridors such as Elizabeth Lake, Teggerdine and Ormond Roads.</p>		

Pathway Extensions and Improvements	2028 - 2032	\$3,000,000 - \$4,000,000
<p>An important objective of the CIA is to improve pathway options throughout the District. Pathways will be improved and extended along the length of M-59 within the District connecting residential areas with commercial and recreational resources. The Township Triangle trail will be completed to connect the Town Center and Library to M-59 and Teggerdine Road.</p>		

Traffic Safety Improvements	2025 - 2035	\$2,000,000 - \$3,000,000
<p>Intersection capacity and safety improvements are needed at Elizabeth Lake and M-59, at White Banks Boulevard and M-59, at Teggerdine Road and M-59 and at Fisk Road and M-59. Access management is also needed along the more congested commercial areas of M-59. In conjunction with non-motorized improvements, safe pedestrian crossings of M-59 are also needed.</p>		

Enhanced Transit Stops / TOD / Dedicated Transit Routes	2028-2034	\$1,500,000 - \$2,250,000
<p>White Lake Township is part of the Western Oakland Transportation Authority (WOTA) system, which is expected to be expanding service along M-59 and the Town Center area. Enhanced transit stops with cover and seating will be strategically located to improve ridership. In conjunction with improved transit, the Township will also promote transit-oriented development in conjunction with enhanced transit stops. These stops will be meant to serve dedicated WOTA / SMART routes along the M-59 corridor.</p>		

Sewer Extensions	2028 - 2035	\$1,500,000 - \$3,000,000
<p>There are areas within the district that lack adequate sanitary sewer-service. This project would include extension and / or upgrading of sewers into underserved and unserved areas.</p>		
Water Extension / System Improvement	2028 - 2034	\$1,500,000 - \$3,000,000
<p>As with sanitary sewers, there are areas within the district which lack adequate drinking water. This project would include extension and / or upgrading of the water service into underserved and unserved areas. System improvements are also needed to upgrade fire flows and capacity with additional pumping and booster stations. Improvements to the Twin Lakes Wellhouse including filtration and maintenance facilities will be considered for this fund.</p>		
Economic Development Assistance	2024-ongoing	\$1,500,000- \$2,000,000
<p>Provide economic development assistance targeted at substandard or underutilized including façade improvements, improvements to site circulation and access management (addressing vehicle-pedestrian safety conflicts) and utility tap fee assistance. The latter may be provided to new or expansion of existing uses in sewerred areas or in areas where sewer service will be extended.</p>		
Property / Easement Acquisition	2025 - 2035	\$3,000,000 - \$4,000,000
<p>To implement the specific projects set forth in this plan, it may be necessary to acquire property in either fee simple or by easement. This will be coordinated via the necessary agencies such as the Department of Environmental, Great Lakes and Energy (EGLE), Michigan Department of Transportation (MDOT) and any other necessary organizations. Permits and/or entitlements will be acquired where needed.</p>		
Administrative, auditing, operating & consultation	2024 - 2043	\$500,000 - \$600,000
<p>The CIA will incur annual administrative, auditing, and operating costs which may also include planning, legal, engineering, and promotion consultation. These expenses are not anticipated to exceed \$25,000 - \$40,000 per year and will be reflected in the annual budget of the Authority, as approved by the Township Board.</p>		

STATEMENT OF CONSTRUCTION

Construction of the projects proposed above will be accomplished during construction seasons.

OPEN SPACE

It is anticipated open space features may be incorporated as part of the entryway and streetscape improvements and at strategic locations within the development area. Where applicable, green infrastructure to manage stormwater will be incorporated in both open space and project design.

DEVELOPMENT AREA OWNERSHIP AND TENURE

It may be necessary for property to be acquired either through fee simple purchase or easement acquisition to implement the overall purpose or specific projects within the plan. If the CIA acquires land for roads or improvements, the necessary rights-of-way will be dedicated to either the Township or the appropriate County or State entity.

ZONING CHANGES AND CHANGES IN STREETS, STREET LEVELS, INTERSECTIONS, AND UTILITIES

Most of the land within the CIA development area is zoned for commercial use. The Township Master Plan contemplates allowing mixed-use within the development area, including transit-oriented development. The Township is committed to reflecting both concepts in revisions to their Master Plan. As a result, there is the potential for additional residential development within both mixed-use and transit-oriented developments.

It is anticipated that public utilities will be extended, and improved in the Development Area, as needed. It may also be necessary to loop water lines as developments are made. As the specific areas are redeveloped, it may also be necessary to re-route or construct new utilities to service the new buildings.

PROPOSED METHOD OF FINANCING THE DEVELOPMENT

Projected improvements and their anticipated costs are shown in Table 3. These projects are set to occur over a period of approx. twenty years. This program will shift as developments are finalized and financing is secured. The estimated cost of the specific projects anticipated in this Development Plan is approximately \$16,825,000 to \$24,850,000, as summarized in Table 3. Table 5 anticipates that the CIA will capture approximately \$12,273,133 from TIF sources. Approximately \$11,325,000 to \$15,950,000 is planned to be expended using TIF funds by the CIA towards projects outlined in Table 2 and 3. It should be noted that all expenses and revenues discussed in these sections are estimates that attempt to account for inflation over time and potential changes in the scope of projects. As capture commences and project bids are reviewed, annual CIA budgets will be adjusted accordingly.

Pursuant to Part 6 of Act 57, as amended, the costs of development may be financed by private contributions or donations received by the CIA, Federal and State grants, tax increment financing revenues, revenue bonds issued pursuant to Act 94 of 1933, as amended, general obligation bonds issued by the Township payable from the anticipated tax increment revenues available for payment of debt service on such bond, tax increment bonds issued by the CIA pledging solely the tax increments, other revenues of the CIA, and other dedicated Township funds.

Tables 4 and 5 in the Tax Increment Financing Plan indicate the sources of income available to the CIA to pay the costs of the development and the estimated amounts of each source, based on captured assessed value of property within the District.

It is unlikely that all projects can be financed from revenues received by the CIA. Therefore, the TIF and millage funds should be used to leverage funding from other sources. The various available methods of financing the CIA may seek to use are described in the following text.

TABLE 3: Summary of Proposed Development Activities

Proposed Project	Cost	CIA Share	Year	Anticipated Method of Financing
Branding	\$75,000 - \$100,000	\$75,000 - \$100,000	2024 - 2025	1
Entryways / Wayfinding	\$250,000 - \$400,000	\$250,000 - \$400,000	2027 - 2029	1, 4, 5
Streetscape Improvements	\$2,000,000 - \$2,500,000	\$1,000,000 - \$1,500,000	2030 - 2032	1, 4
Pathway Extension / Improvements	\$3,000,000 - \$4,000,000	\$1,000,000 - \$1,500,000	2028 - 2032	1, 2, 4
Traffic Safety Improvements	\$2,000,000 - \$3,000,000	\$500,000 - \$1,000,000	2025 - 2035	1,2, 4
Enhanced Transit Stops / TOD / Dedicated Transit Routes	\$1,500,000 - \$2,250,000	\$500,000 - \$850,000	2028 – 2034	1, 2, 4, 5
Sewer Extension	\$1,500,000 - \$3,000,000	\$1,500,000 - \$2,000,000	2028 - 2035	1, 3, 4
Water Extension / System Improvements	\$1,500,000 - \$3,000,000	\$1,500,000 - \$2,000,000	2028 - 2034	1, 3, 4
Economic Development Assistance	\$1,500,000- \$2,000,000	\$1,500,000- \$2,000,000	2024 – Ongoing	1
Property / Easement Acquisition	\$3,000,000 - \$4,000,000	\$3,000,000 - \$4,000,000	2025 - 2035	1
Administrative, auditing, operating & consultation	\$500,000 - \$600,000 (\$25,000 - \$30,000 per year)	\$500,000 - \$600,000	2024 - Ongoing	1
Estimated Totals	\$16,825,000 - \$24,850,000	\$11,325,000 - \$15,950,000		
1 = Annual Tax Increment 2 = Tax Increment Bonds 3 = Township Funds (either General or Dedicated) 4 = State and Federal Grants 5 = Private donation				

White Lake Township Limited Tax General Obligation Bonds Issued Pursuant to Section 216 of Act 57, as amended.

Section 216(1) of Act 57 permits the Township to issue general obligation bonds, which pledge CIA revenues as additional security. Section 216(2) permits the CIA to issue bonds payable solely from tax increment revenues. Currently, neither the Township nor the CIA have outstanding bonds issued under Section 216 of Act 57. It is anticipated the CIA or Township will incur no more than \$9,000,000 in bonded indebtedness under this Plan.

Special Assessment/General Obligation Bonds

The Township may also issue special assessment bonds along or in combination with general obligation bonds to finance all or part of the projects identified in this plan. The size of such bond issues would depend on the project included and the portion of each such project to be financed from special assessments and the portion, if any, to be financed from general funds. Payment of such special assessment bonds would be from the proceeds of the special assessment rolls consisting of the lands specially benefitted by the project. Payment of the general obligation bonds would be from the general fund of the Township derived from the proceeds of taxes levied upon all property within the Township.

State and Federal Grant Programs

The Township will also assist the CIA in pursuing relevant State and Federal transportation, environmental, economic development, and community enhancement grants that either are or may become available. Supplemental sources of funding will be necessary to fully complete all the projects outlined in this plan.

Private Contributions

The CIA may also accept private contributions from individuals, corporations, and foundations.

LEASE, SALE, OR CONVEYANCE OF DEVELOPMENT

All public improvement projects undertaken as part of this Plan will remain in public ownership for the public benefit.

It is anticipated certain lands may be acquired and later sold to commercial developers who are willing to build a project acceptable to the Authority. There are no known direct beneficiaries at this time. To the extent that certain projects, such as the provision of public parking facilities, will benefit a set of businesses, efforts will be made to capture such benefit through special assessments and development agreements.

RESIDENTIAL POPULATION AND THE DISPLACEMENT OF PERSONS

There is no anticipated displacement or relocation required for this Plan. However, if there is the need for relocation of any individuals, the CIA, when required, will provide for the cost of relocation and reimbursement of expenses in accordance with the Federal Uniform Relocation Assistance and Real Property Acquisition Policies Act of 1970.

The relocation of any families, individuals, or businesses shall also be carried out in accordance with the statutory requirements and provisions of State of Michigan Act No. 227 of the Public Acts of 1972, being sections 213.321 to 213.332 of the Michigan Compiled Laws.

DEVELOPMENT AREA CITIZENS ADVISORY COUNCIL

If a Development Area has one hundred (100) or more residents residing within it, a Development Area Citizens Advisory Council (CAC) must be appointed at least ninety (90) days before the public hearing on the Plan. The Citizen Advisory Council was appointed by the Township Board ninety (90) days prior to the adoption of the Plan. In a joint meeting with the CIA Board on August 3rd, 2023, the CAC recommended approval of the Plan.

Section 3

Tax Increment Financing Plan

INTRODUCTION

This Tax Increment Financing Plan is established to make possible the financing of the public improvements necessary or desirable for the Corridor Improvement Authority Development Area in accordance with the Development Plan for that area.

EXPLANATION OF THE TAX INCREMENT PROCEDURES

The Corridor Improvement Authority enabling legislation, Act. No. 57 of the Public Acts of 2018 enables Corridor Improvement Authorities (CIA) to undertake a broad range of development area improvement activities which will contribute to the economic growth and the halting of deterioration of property values in the designated development area. These improvement activities include, but are not limited to, the following: plan and propose the construction, renovation, repair, remodeling, rehabilitation, restoration or reconstruction of public facilities or buildings; development of long-range plans; and otherwise implement any plan for development in the development area necessary to achieve the purpose of the enabling statute.

To provide the Authority with the means of financing the planning and implementation of development proposals, the statute affords the opportunity to undertake tax increment financing or development programs. These programs must be identified in a Tax Increment Financing Plan which has been approved by the governing body of a municipality.

Simply stated, tax increment financing permits the Authority to capture tax revenues attributable to the increase in value of real and personal property located within an approved development area. The increases in property value may be attributable to new construction, rehabilitation, remodeling, alterations, additions, or to such other factors the assessor may deem appropriate.

At the time the CIA Ordinance establishing the Tax Increment Financing Plan is approved, the sum of the most recently assessed values, i.e., the values as finally equalized by the State Board of Equalization, of those taxable properties located within the development area, is established as the "Initial Assessed Value." Property exempt from taxation at the time of determination of the Initial Assessed Value shall be included as zero on the date of adoption of this Plan. The local taxing jurisdictions consist of the White Lake Township Operating & Parks, Township Police, Township Fire, Library (minus debt) Oakland County Operating, Oakland County Parks & Rec, Oakland County Transportation, Oakland Community College, and the Huron-Clinton Metropolitan Authority. As a result of Proposal A passed in March 1994, local school districts, intermediate school districts, and the State of Michigan are no longer included as part of the capture.

In each subsequent year, the total assessed value of real and personal property within the district is termed the "Current Assessed Value."

The difference between any one (1) year period between the Current Assessed Value and the Initial Assessed Value is the “Captured Assessed Value.” During that period which the TIF Plan is in place, local taxing jurisdictions continue to receive ad valorem taxes based on the Initial Assessed Value. Taxes paid on the Captured Assessed Value in allotted years after the establishment of the TIF Plan, however, are payable to the CIA for the purposes established in the Tax Increment Financing Plan.

For the White Lake Township Corridor Improvements Authority Tax Increment Financing Plan, the initial assessed value will be the assessed value of all real and personal property in the Development Area as of December 31, 2023, and equalized by the State in May of 2024. The initial taxable value of Development Area is estimated to be \$123,684,420, which includes both real and personal property. The Township Assessor does not anticipate significant growth in personal property due to the characteristics of land use in the Township and increased availability of exemptions from the State of Michigan.

The tax levy of all taxing jurisdiction in 2023 is 16.7946 mills. Under the Tax Increment Financing Plan, the tax levy on the entire capture assessed valuation is to be utilized by the CIA in the manner as hereinafter set forth.

PROJECTION OF CAPTURED ASSESSED VALUES AND REVENUES

The Tax Increment Financing Plan is based on the redevelopment or revitalization of desired properties within Development Area.

As noted in the Development Plan, there are areas available for commercial expansion and the CIA may support these large redevelopment projects by providing economic development services or applying for State and Federal grants. However, most projects will focus on supporting existing businesses via branding, gateways, signage improvements, utility extensions, safety path extensions and improvements, traffic improvements, and streetscape improvements. CIA projects will also enhance the overall physical and economic environment of the corridor to promote revitalization and investment.

The taxing jurisdictions and their respective millages subject to capture are presented in Table 4.

TABLE 4: Millage Capture

Millage Name	Ad Val Rate
White Lake Township Operating (inc. Twp. Parks and Recreation)	1.1884
Township Police	4.6871
Township Fire	2.9032
Library (minus debt)	1.0581
Oakland County Operating	3.9686
Oakland County Parks & Rec.	.3431
Oakland County Transport	.95
Huron Clinton Metro Auth.	.2070
Oakland Community College	1.4891
Total	16.7946

The Township has taken a somewhat unique approach by proposing only a 35% capture of taxes for the TIF. Such an approach allows all taxing jurisdictions to enjoy a substantial benefit in the economic growth of the development area. Based on the projected growth outlined in the Development Plan and the existing tax rate of 16.7946 to be captured, the anticipated revenues are summarized in Table 5. Detailed estimates of the impact on tax capture for each taxing jurisdiction are provided in Appendix 3.

This projection is based on current tax rates. Possible factors leading to the deviation from current values are below:

1. If other taxing districts that are subject to capture in the Development Area raise their millage, more revenues will be raised for the Corridor Improvement Plan.
2. An annual inflation growth rate of 3% has been projected for each year and is reflected in Table 5. To develop this estimate, taxable value increases were reviewed over a ten-year period beginning in 2014 and ending with anticipated values from 2024. This review is shown in Appendix 2. The result was an average real property taxable value increase of 4.92% over the ten-year span. Using conservative parameters, 3% was chosen to inform the projections.

Proposal A, adopted in March 1994, limits the annual assessment increase for each property parcel in the State of Michigan to 5% or the inflation rate, whichever is less. When property is sold or transferred, the tax assessment is adjusted to current values.

TABLE 5: Estimated TIF Capture 2024 - 2043

Year	Capture
2024	\$29,017
2025	\$132,381
2026	\$230,029
2027	\$330,606
2028	\$434,201
2029	\$467,427
2030	\$501,650
2031	\$536,899
2032	\$573,206
2033	\$610,602
2034	\$649,120
2035	\$688,794
2036	\$729,658
2037	\$771,747
2038	\$815,100
2039	\$859,753
2040	\$905,745
2041	\$953,118
2042	\$1,001,911
2043	\$1,052,169
Total Est.	\$12,273,133

USE OF TAX INCREMENT REVENUES

The tax increment revenues generated within the development area, pursuant to the Development Plan as it now exists or is hereafter amended, shall be used according to the budget of the Authority as approved by Township Board in accordance with the following:

- First, to pay the administrative, auditing, and operating expenses of the CIA and the Township for the development area, including planning, legal, engineering and promotion to the extent provided in the annual budget of the Authority, as approved by the Township Board.
- Second, to pay for projects and ongoing programs identified in the Development Plan.
- Third, any tax increment receipts more than those needed under the preceding paragraphs would be used for future development activities within the development area, as defined in the Development Plan. Expansion or contraction of the development area is possible pursuant to an amendment or modification of the Development Plan and Tax Increment Financing Plan via applicable provisions of Act 57 and other laws.

STATEMENT OF THE ESTIMATED IMPACT OF TAX INCREMENT FINANCING ON TAXING JURISDICTIONS

The primary overall impact of the Plan is anticipated increased economic activity within the development area. This increase in activity will, in turn, generate additional tax revenue to local taxing jurisdictions through increases in assessed valuation of real and personal property, improved residential neighborhoods, and from increased personal income from new employment within the development area.

To the extent the current assessed value equals the initial assessed value, the taxing jurisdictions would always receive the tax revenues they would have received prior to the adoption of this Plan. The local taxing jurisdictions shall, therefore, suffer no loss of current tax revenues.

The debt retirement millages for any local taxing jurisdiction within the development area will also remain with those taxing jurisdictions.

It is anticipated the development activities of the Corridor Improvement Authority, financed in whole or in part by tax increment revenues, will produce a positive, material effect on the assessed values of property within, and in, the proximity of the development area and will ultimately result in the eventual collection of greater real and personal property tax revenues than would otherwise have been available.

The CIA proposed all the eligible taxes, minus those presently collected for debt service retirement, subject to any agreements with the various taxing units, levied on the captured assessed value within the district, be used by the Authority to the extent needed from year-to-year to accomplish the purpose of this Plan.

JUSTIFICATION OF THE TAX INCREMENT FINANCING PLAN

This Tax Increment Financing Plan is based upon the premise that the anticipated increase in development would not occur without the public improvements projected in the Development Plan. Since 2020 private investment within the development area has stagnated. Portions of commercial properties remain vacant or underutilized with higher than desired rates of business turnover. Without the benefits that would result from implementation of the Development Plan, the loss of value and taxes is projected to continue.

The basic premise of this Plan is that private development would not take place without public investment. Therefore, the short-term investment made by the taxing units in foregoing initial growth in tax revenues is repaid by the long-term benefit of substantially greater taxes, improved neighborhoods, and increased employment realized from a significantly stronger commercial tax base.

Appendices

- Appendix 1 Parcel List of CIA Development Area
- Appendix 2 Historical Percent Change Real Property
- Appendix 3 Estimates of TIF Capture

Appendix 1: Parcel List of CIA Development Area

12-09-476-005	12-16-301-011
12-13-351-004	12-19-101-016
12-13-376-004	12-19-101-017
12-13-376-010	12-19-101-021
12-13-376-011	12-19-101-023
12-13-376-012	12-19-101-024
12-13-376-014	12-19-101-025
12-13-376-015	12-19-101-027
12-13-451-011	12-19-101-028
12-13-454-005	12-19-101-033
12-13-454-006	12-19-101-034
12-13-454-013	12-19-101-035
12-13-454-015	12-19-101-036
12-13-454-018	12-19-101-037
12-13-454-019	12-19-201-001
12-13-454-046	12-19-201-003
12-13-454-047	12-19-201-006
12-13-455-008	12-19-201-011
12-13-455-009	12-19-201-012
12-13-455-017	12-19-226-006
12-13-455-020	12-19-226-007
12-13-455-021	12-19-276-002
12-13-455-024	12-19-276-003
12-13-476-001	12-19-276-006
12-13-476-003	12-19-276-007
12-13-476-004	12-19-276-008
12-13-476-007	12-19-276-009
12-13-476-008	12-20-101-003
12-13-476-009	12-20-126-005
12-13-476-010	12-20-126-006
12-13-477-002	12-20-151-006
12-13-478-001	12-20-151-007
12-13-478-003	12-20-151-008
12-13-478-007	12-20-176-001
12-13-478-008	12-20-226-003
12-14-300-019	12-20-251-019
12-14-451-002	12-20-251-020
12-14-451-003	12-20-276-005
12-14-476-002	12-20-276-013
12-14-476-007	12-20-276-014
12-14-476-009	12-20-276-020
12-14-476-010	12-20-276-023
12-14-476-011	12-20-276-024
12-14-476-012	12-20-276-025
12-14-476-013	12-20-276-026
12-14-476-015	12-20-276-027
12-16-176-001	12-20-276-028
12-16-176-002	12-20-276-029
12-16-200-023	12-20-276-030
12-16-200-024	12-20-276-034
12-16-200-025	12-20-276-035
12-21-176-009	12-20-276-036

12-21-176-010	12-20-300-003
12-21-176-011	12-20-300-011
12-21-176-012	12-20-300-018
12-21-176-013	12-20-300-021
12-21-176-014	12-20-300-022
12-21-176-015	12-20-300-023
12-21-176-016	12-20-300-024
12-21-176-017	12-20-401-004
12-21-176-018	12-20-401-005
12-21-176-019	12-20-402-003
12-21-176-020	12-20-426-003
12-21-176-021	12-20-427-004
12-21-176-022	12-20-427-006
12-21-176-023	12-20-427-008
12-21-176-024	12-20-427-009
12-21-176-025	12-20-427-010
12-21-176-026	12-20-427-011
12-21-176-027	12-20-451-005
12-21-176-028	12-20-451-006
12-21-176-029	12-20-451-010
12-21-176-030	12-21-100-002
12-21-176-031	12-21-100-003
12-21-176-032	12-21-100-004
12-21-176-033	12-21-100-005
12-21-176-034	12-21-100-006
12-21-176-035	12-21-100-011
12-21-176-036	12-21-100-013
12-21-176-037	12-21-100-014
12-21-176-038	12-21-100-025
12-21-176-039	12-21-100-026
12-21-176-040	12-21-100-043
12-21-176-041	12-21-100-045
12-21-176-042	12-21-100-046
12-21-176-043	12-21-100-047
12-21-176-044	12-21-100-049
12-21-176-045	12-21-100-050
12-21-176-046	12-21-100-053
12-21-176-047	12-21-100-054
12-21-176-048	12-21-100-055
12-21-176-049	12-21-100-057
12-21-176-050	12-21-100-066
12-21-176-051	12-21-100-071
12-21-176-052	12-21-100-072
12-21-176-053	12-21-100-073
12-21-176-054	12-21-100-074
12-21-176-055	12-21-100-075
12-21-176-056	12-21-176-001
12-21-176-057	12-21-176-002
12-21-176-058	12-21-176-003
12-21-176-059	12-21-176-004
12-21-176-060	12-21-176-005
12-21-176-061	12-21-176-006
12-21-326-012	12-21-176-007

12-21-326-014	12-21-176-008
12-21-326-015	12-21-176-062
12-21-326-016	12-21-176-063
12-21-401-019	12-21-176-064
12-21-402-022	12-21-176-065
12-21-402-025	12-21-176-066
12-21-403-001	12-21-176-067
12-21-403-012	12-21-176-068
12-21-406-038	12-21-176-069
12-21-426-001	12-21-176-070
12-21-426-006	12-21-176-071
12-21-426-007	12-21-176-072
12-21-426-008	12-21-176-073
12-22-126-002	12-21-176-074
12-22-151-002	12-21-176-075
12-22-151-007	12-21-176-076
12-22-151-011	12-21-176-077
12-22-151-012	12-21-176-078
12-22-151-013	12-21-176-079
12-22-151-016	12-21-176-080
12-22-151-017	12-21-176-081
12-22-152-001	12-21-251-001
12-22-176-003	12-21-251-002
12-22-176-004	12-21-251-003
12-22-176-005	12-21-251-004
12-22-176-006	12-21-251-005
12-22-176-007	12-21-251-006
12-22-176-008	12-21-251-008
12-22-177-003	12-21-251-023
12-22-177-006	12-21-251-024
12-22-177-007	12-21-251-025
12-22-177-008	12-21-251-028
12-22-177-009	12-21-252-011
12-22-177-010	12-21-252-012
12-22-177-014	12-21-252-013
12-22-177-016	12-21-252-014
12-22-177-025	12-21-276-004
12-22-177-026	12-21-276-005
12-22-178-002	12-21-276-008
12-22-226-005	12-21-276-009
12-22-226-008	12-21-276-010
12-22-226-009	12-21-276-011
12-22-226-010	12-21-276-012
12-22-226-011	12-21-276-013
12-22-227-011	12-21-276-014
12-22-251-003	12-21-276-023
12-22-251-004	12-21-278-010
12-22-251-009	12-21-278-011
12-22-251-010	12-21-301-004
12-22-251-014	12-21-301-005
12-22-251-015	12-21-301-032
12-22-251-016	12-21-326-004
12-23-101-011	12-21-326-006

12-23-101-012	12-21-326-009
12-23-101-014	12-22-251-017
12-23-101-015	12-22-251-018
12-23-126-004	12-22-251-019
12-23-126-005	12-22-251-020
12-23-126-006	12-22-251-021
12-23-127-001	12-22-251-022
12-23-128-001	12-22-251-023
12-23-128-012	12-22-251-024
12-23-128-026	12-22-251-025
12-23-128-028	12-22-251-026
12-23-128-029	12-22-251-027
12-23-128-030	12-22-252-011
12-23-129-008	12-22-252-014
12-23-129-018	12-22-252-017
12-23-151-001	12-22-252-019
12-23-151-002	12-22-252-020
12-23-151-003	12-22-252-021
12-23-152-001	12-22-252-022
12-23-152-002	12-22-252-023
12-23-201-001	12-22-276-002
12-23-201-002	12-22-276-003
12-23-201-008	12-22-276-004
12-23-201-009	12-22-279-001
12-23-201-010	12-22-279-004
12-23-201-011	12-22-279-005
12-23-202-001	12-22-279-006
12-23-202-004	12-22-279-008
12-23-202-006	12-22-301-007
12-23-202-008	12-22-301-009
12-23-226-002	12-22-301-010
12-23-226-003	12-22-301-012
12-23-226-005	12-22-301-013
12-23-227-001	12-22-301-014
12-23-227-003	12-22-301-015
12-23-227-006	12-22-326-004
12-23-227-007	12-22-326-005
12-23-227-008	12-22-326-014
12-23-227-009	12-22-326-018
12-23-227-010	12-22-326-024
12-23-227-011	12-22-326-025
12-23-227-012	12-22-326-026
12-23-227-013	12-22-351-006
12-23-228-001	12-22-401-034
12-24-126-001	12-23-101-001
12-24-126-002	12-23-101-002
12-24-126-003	12-23-101-003
12-24-126-004	12-23-101-004
12-24-126-005	12-23-101-005
12-24-126-009	12-23-101-006
12-27-100-014	12-23-101-007
12-28-226-001	12-23-101-008
12-23-101-010	12-23-101-009

Appendix 2: Historical Percent Change Real Property

Historical Percent Change Real Property - White Lake Township			
Year	Prior Year's Taxable Value	Current Year's Taxable Value	% Change
2014 Comparison	903,891,530	926,341,810	2.48%
2015 Comparison	926,341,810	955,486,460	3.15%
2016 Comparison	955,486,460	981,439,960	2.72%
2017 Comparison	981,439,960	1,025,833,710	4.52%
2018 Comparison	1,025,833,710	1,078,549,040	5.14%
2019 Comparison	1,078,549,040	1,139,844,130	5.68%
2020 Comparison	1,139,844,130	1,195,930,760	4.92%
2021 Comparison	1,195,930,760	1,244,632,260	4.07%
2022 Comparison	1,244,632,260	1,326,390,710	6.57%
2023 Comparison	1,326,390,710	1,430,154,920	7.82%
2024 Comparison	1,430,154,920	1,530,265,764	7.00%
		Average % Change	4.92%

Appendix 3: White Lake Township Estimated Tax Capture of Corridor Improvement Authority

Assumed Percent of Growth*:	3.00%	Taxable Value of Real Property	Taxable Value of Personal Property	Captured TV Over Base Year	35%	35%	35%	35%	35%	35%	35%	35%	35%	Estimated Annual TIF Revenue	
					Capture of Township Operating & Parks (1.1884)	Capture of Township Police (4.6871)	Capture of Township Fire (2.9032)	Capture of Library minus debt (1.0581)	Capture of County Operating (3.9686)	Capture of County Parks & Rec (.3431)	Capture of County Transport (.95)	Capture of Huron Clinton Metroparks (.2070)	Capture of Oakland CC (1.4891)		
Tax Year					0.41594	1.64049	1.01612	0.37034	1.38901	0.12009	0.33250	0.07245	0.52119		
2023	114,549,250	9,135,170	0	0	0	0	0	0	0	0	0	0	0		2023
2024	119,485,728	9,135,170	4,936,478	2,053	8,098	5,016	1,828	6,857	593	1,641	358	2,573		29,017	2024
2025	137,070,299	9,135,170	22,521,049	9,367	36,945	22,884	8,340	31,282	2,704	7,488	1,632	11,738		132,381	2025
2026	153,682,408	9,135,170	39,133,158	16,277	64,197	39,764	14,492	54,356	4,699	13,012	2,835	20,396		230,029	2026
2027	170,792,881	9,135,170	56,243,631	23,394	92,267	57,150	20,829	78,123	6,754	18,701	4,075	29,313		330,606	2027
2028	188,416,667	9,135,170	73,867,417	30,724	121,178	75,058	27,356	102,603	8,870	24,561	5,352	38,499		434,201	2028
2029	194,069,167	9,135,170	79,519,917	33,076	130,451	80,802	29,449	110,454	9,549	26,440	5,761	41,445		467,427	2029
2030	199,891,242	9,135,170	85,341,992	35,497	140,002	86,718	31,605	118,541	10,248	28,376	6,183	44,479		501,650	2030
2031	205,887,979	9,135,170	91,338,729	37,991	149,840	92,811	33,826	126,870	10,968	30,370	6,617	47,604		536,899	2031
2032	212,064,619	9,135,170	97,515,369	40,561	159,972	99,087	36,113	135,450	11,710	32,424	7,065	50,824		573,206	2032
2033	218,426,557	9,135,170	103,877,307	43,207	170,409	105,552	38,469	144,287	12,474	34,539	7,526	54,139		610,602	2033
2034	224,979,354	9,135,170	110,430,104	45,932	181,159	112,210	40,896	153,389	13,261	36,718	8,001	57,555		649,120	2034
2035	231,728,735	9,135,170	117,179,485	48,740	192,231	119,068	43,396	162,763	14,071	38,962	8,490	61,072		688,794	2035
2036	238,680,597	9,135,170	124,131,347	51,631	203,636	126,132	45,970	172,420	14,906	41,274	8,993	64,695		729,658	2036
2037	245,841,014	9,135,170	131,291,764	54,609	215,382	133,408	48,622	182,366	15,766	43,655	9,512	68,427		771,747	2037
2038	253,216,245	9,135,170	138,666,995	57,677	227,481	140,902	51,353	192,610	16,652	46,107	10,046	72,271		815,100	2038
2039	260,812,732	9,135,170	146,263,482	60,837	239,943	148,621	54,166	203,161	17,564	48,633	10,597	76,230		859,753	2039
2040	268,637,114	9,135,170	154,087,864	64,091	252,779	156,572	57,064	214,030	18,504	51,234	11,164	80,308		905,745	2040
2041	276,696,228	9,135,170	162,146,978	67,443	266,000	164,761	60,049	225,224	19,471	53,914	11,748	84,509		953,118	2041
2042	284,997,114	9,135,170	170,447,864	70,896	279,617	173,195	63,123	236,754	20,468	56,674	12,349	88,835		1,001,911	2042
2043	293,547,028	9,135,170	178,997,778	74,452	293,643	181,883	66,289	248,630	21,495	59,517	12,968	93,291		1,052,169	2043
					868,457	3,425,232	2,121,596	773,237	2,900,168	250,730	694,240	151,271	1,088,202	12,273,133	

POTENTIAL PROJECT VALUE:

2024	Commercial / Retail Development	1,500,000
2025	Commercial / Retail Development Mixed-Residential Development	14,000,000
2026	Mixed-Residential Development	12,500,000
2027	Mixed-Residential Development	12,500,000
2028	Mixed-Residential Development	12,500,000

*The above table reflects 2024-2028 anticipated developments' taxable value in addition to annual 3% normal taxable value increase.