

CITY OF WESTLAKE



SEMINOLE IMPROVEMENT DISTRICT



AGENDA

City of Westlake and Seminole Improvement District Joint Workshop

Tuesday, May 21, 2024, at 4:00 PM

The Lodge at Westlake Adventure Park
5490 Kingfisher Blvd.
Westlake, Florida 33470

CITY COUNCIL:

JohnPaul O'Connor, Mayor
Greg Langowski, Vice Mayor
Gary Werner, Council Member – Seat 1
Julian Martinez, Council Member – Seat 2
Charlotte Leonard, Council Member – Seat 3

BOARD OF SUPERVISORS:

Scott Massey, President – Seat 2
Zane Beard, Vice President – Seat 3
Leolani Gevers, Secretary – Seat 1

CITY STAFF:

Ken Cassel, City Manager
Zoie P. Burgess, CMC, City Clerk
Donald J. Doody, Esq., City Attorney
Nilsa Zacarias, AICP, Planning and Zoning Director
Suzanne Dombrowski, P.E., ENV SP, City Engineer

DISTRICT STAFF:

Ken Cassel, District Manager
Sandra DeMarco, District Clerk
Seth Behn, Esq., District Counsel
Ryan Wheeler, P.E., LEED AP

[TENTATIVE: SUBJECT TO REVISION]

CALL TO ORDER

ROLL CALL

PLEDGE OF ALLEGIANCE

WORKSHOP AGENDA

- A. Presentation:** Seminole Improvement District (SID) and the City of Westlake's Interlocal Agreement, the Working Relationship and the Areas of Responsibility and Jurisdiction

Presented By: Seth Behn, AICP

- B.** Seminole Improvement District (SID) - Park Update and Future Development and Current and Future Development

DISCUSSION

- A. City of Westlake and Seminole Improvement District Boards Q & A and General Discussion

PUBLIC COMMENTS

This section of the agenda allows for comments from the public to speak. Each speaker will be given a total of three (3) minutes to comment. A public comment card should be completed and returned to the City Clerk. When you are called to speak, please go to the podium, and prior to addressing the Board, state your name and address for the record. All public comments will be noted and may receive a response if necessary. Any follow-up will be handled by staff later.

ADJOURNMENT

NOTICE: If a person, firm or corporation decides to appeal any decision made by the City Council with respect to any matter considered at this meeting, you will need a record of the proceedings, and you may need to ensure that a verbatim record of the proceedings is made, which record includes the testimony and evidence upon which the appeal is to be based. (The above notice is required by State Law. Anyone desiring a verbatim transcript shall have the responsibility, at his own cost, to arrange for the transcript). The City of Westlake does not prepare or provide such verbatim record.

In accordance with the Americans with Disabilities Act, persons who need an accommodation in order to attend or participate in this meeting should contact the City Clerk at (561) 530-5880 at least three (3) business days prior to the meeting in order to request such assistance.

AGENDA POSTED: Friday, May 17, 2024

File Attachments for Item:

B. Seminole Improvement District (SID) - Park Update and Future Development and Current and Future Development

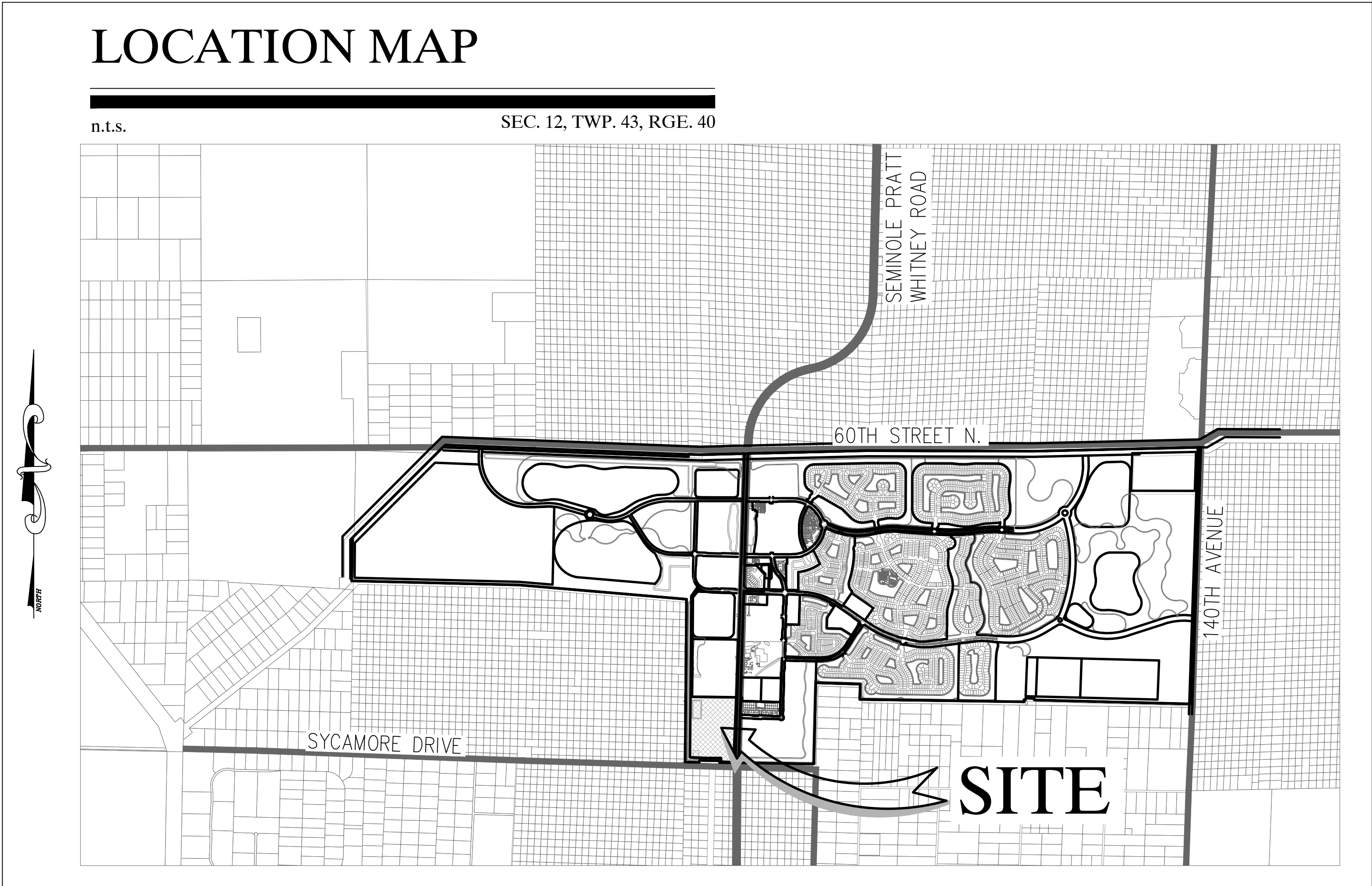
SEMINOLE IMPROVEMENT DISTRICT

Park Parcel C-4 Drainage Modifications

Westlake, Florida

| REVISIONS | DATE | BY |
|-----------|------|----|
| | | |
| | | |
| | | |
| | | |
| | | |

CAULFIELD & WHEELER, INC.
 CIVIL ENGINEERING - LAND PLANNING
 LANDSCAPE ARCHITECTURE - SURVEYING
 7900 GLADES ROAD - SUITE 100
 BOCA RATON, FLORIDA 33434
 PHONE (561) 392-1991 / FAX (561) 750-1452

INDEX

| | |
|---------------|-------------------------------------|
| 01 | Cover Page |
| 02 - 03 | Paving, Grading, & Drainage Plans |
| 04 - 05 | Paving, Grading, & Drainage Details |
| 06 | Pollution Prevention Plan |

SEMINOLE IMPROVEMENT DISTRICT /
 WESTLAKE PARK PARCEL C-4

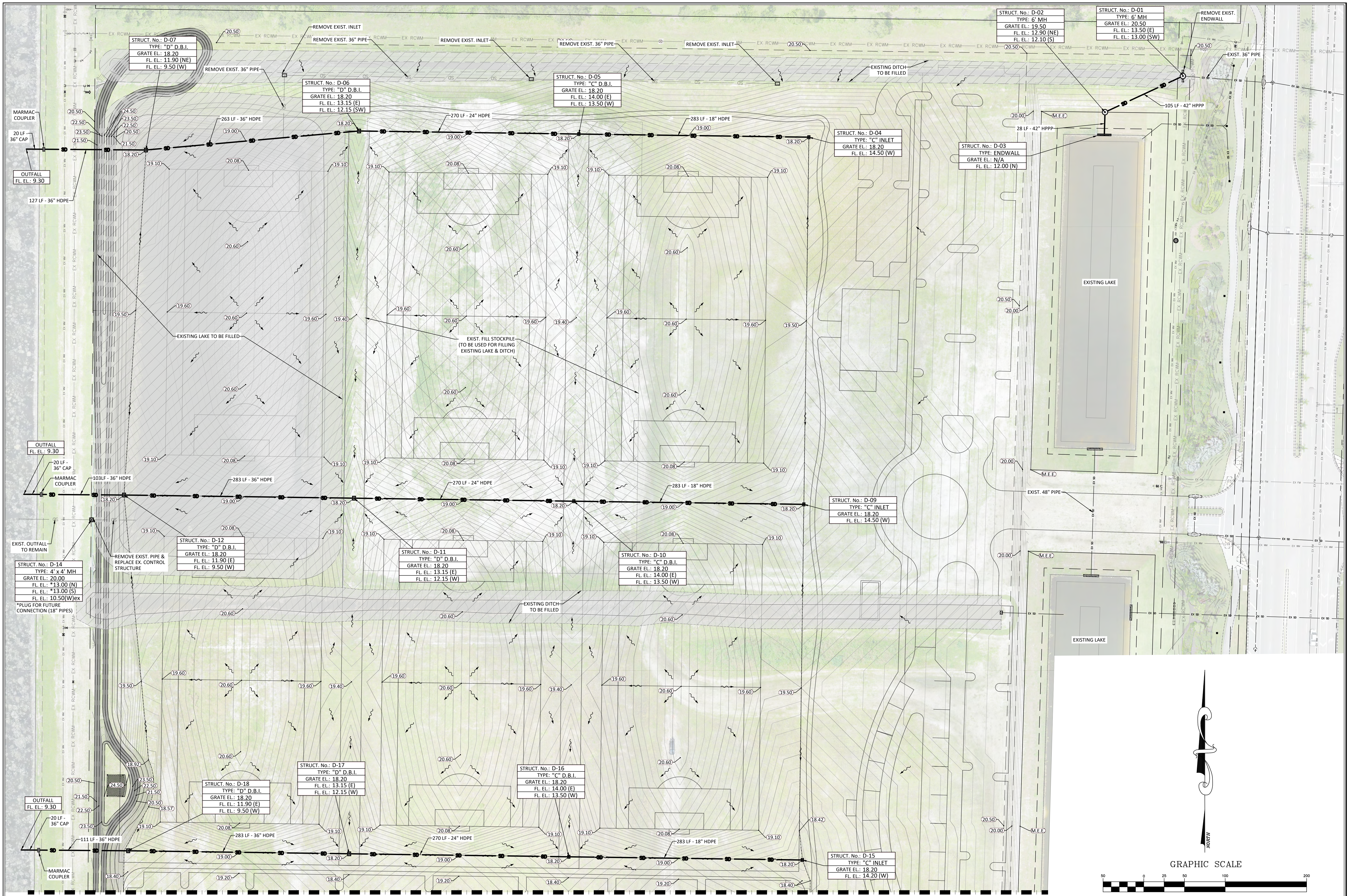
COVER SHEET
 WESTLAKE, FLORIDA

| | |
|-----------|------------|
| DATE | 09/06/2023 |
| DRAWN BY | RHT |
| F.B./ PG. | 0000 |
| SCALE | N/A |

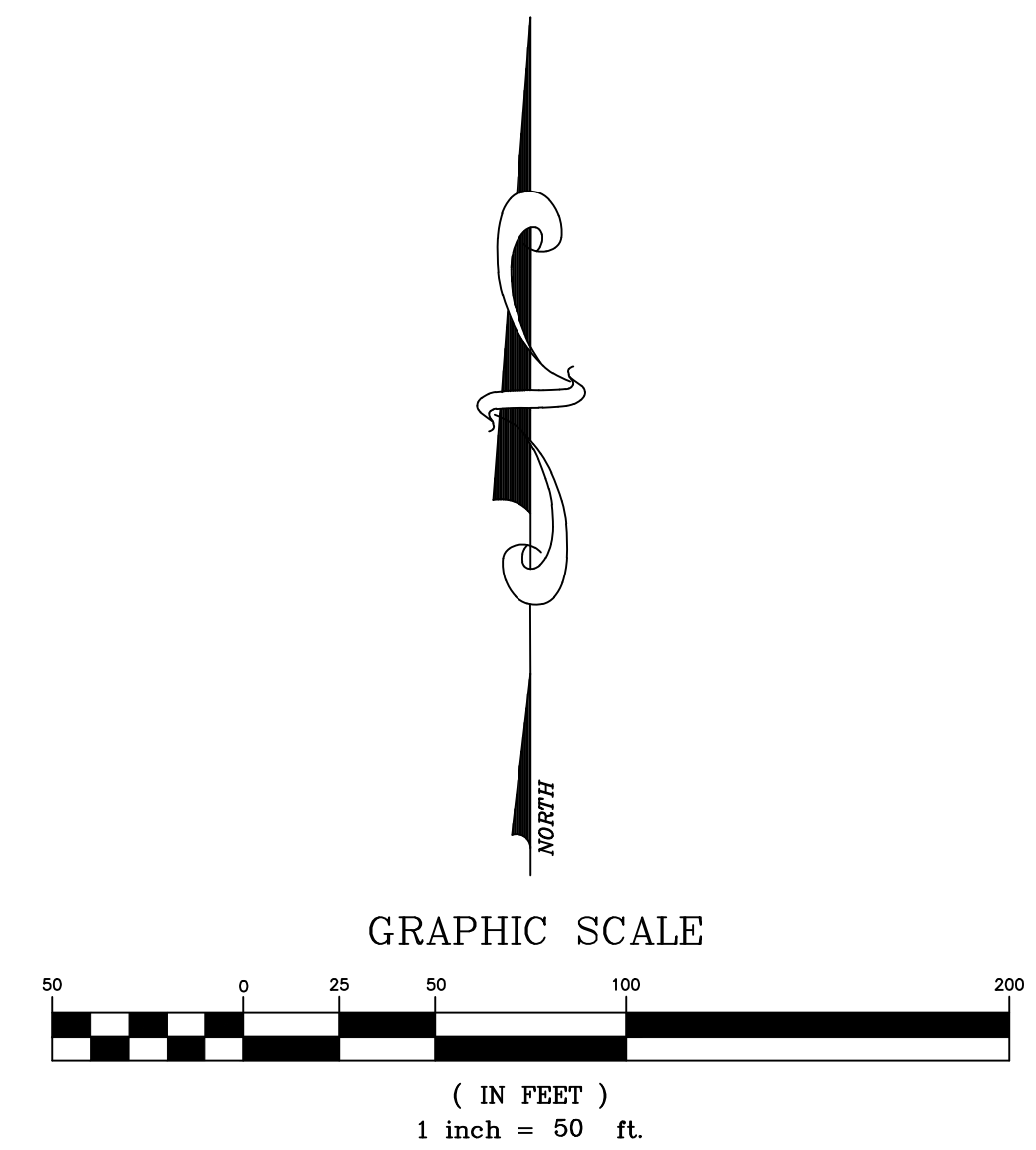
RYAN D. WHEELER
 PROFESSIONAL ENGINEER
 LICENSE NO. 71477
 STATE OF FLORIDA
 FOR THE FIRM -
 DATE May 13, 2024

FOR CONSTRUCTION
 05/13/2024

JOB # 8500
 SHT. NO.
01
 OF 06 SHEETS



MATCHLINE
(SHEET NO. 03)



| DATE | BY |
|----------------------------------|-----|
| 01/17/2023 | RHT |
| FILE NAME: S01_Park_Drainage.dwg | |
| REVISIONS | |
| A. ADDED FLORITAM 500 | |

CAULFIELD & WHEELER, INC.
 CIVIL ENGINEERING - LAND PLANNING
 LANDSCAPE ARCHITECTURE - SURVEYING
 7900 GLADES ROAD - SUITE 100
 BOCA RATON, FLORIDA 33434
 PHONE (561) 392-1991 / FAX (561) 750-1452

SEMINOLE IMPROVEMENT DISTRICT /
 WESTLAKE PARK PARCEL C-4

DRAINAGE IMPROVEMENTS

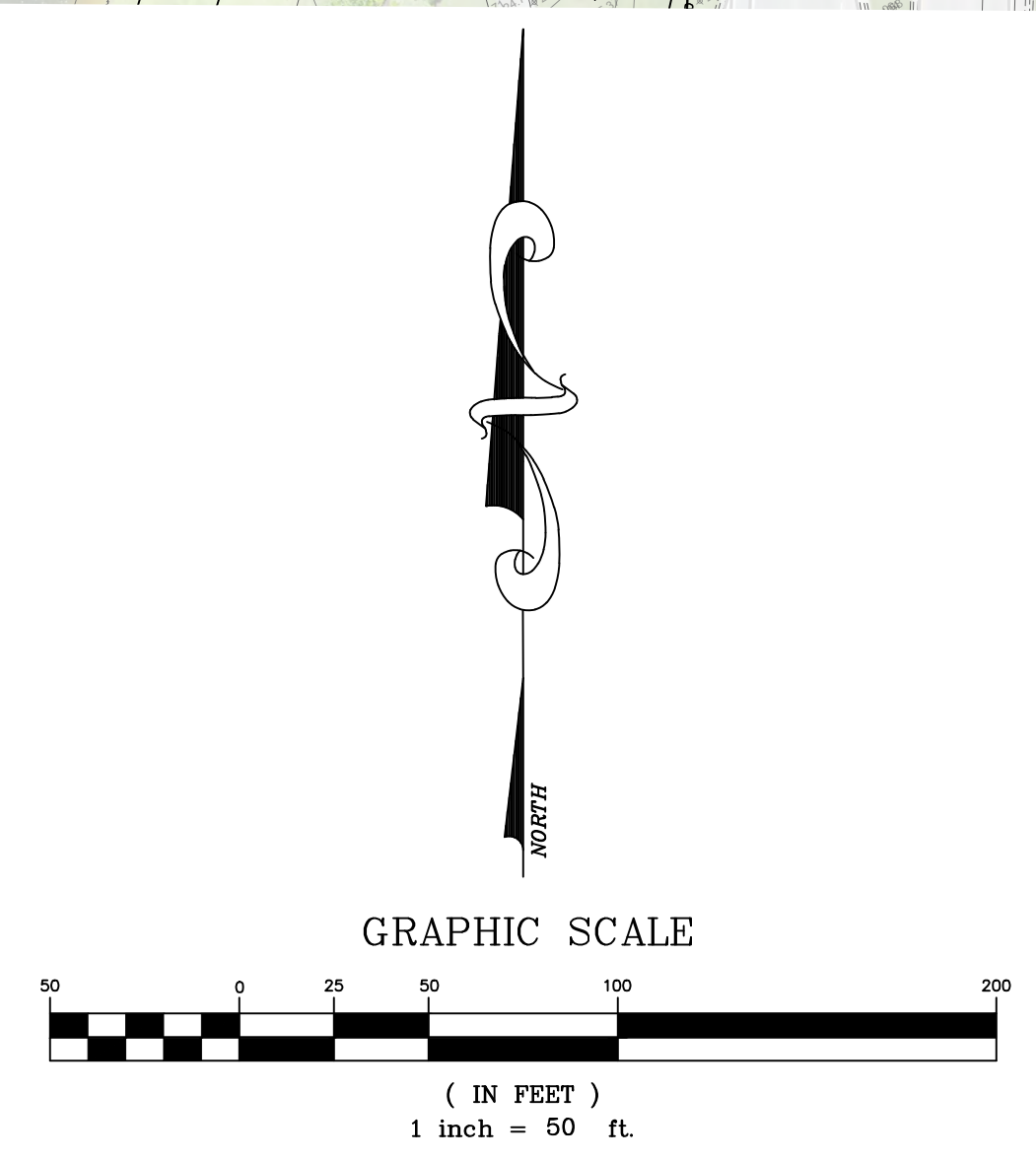
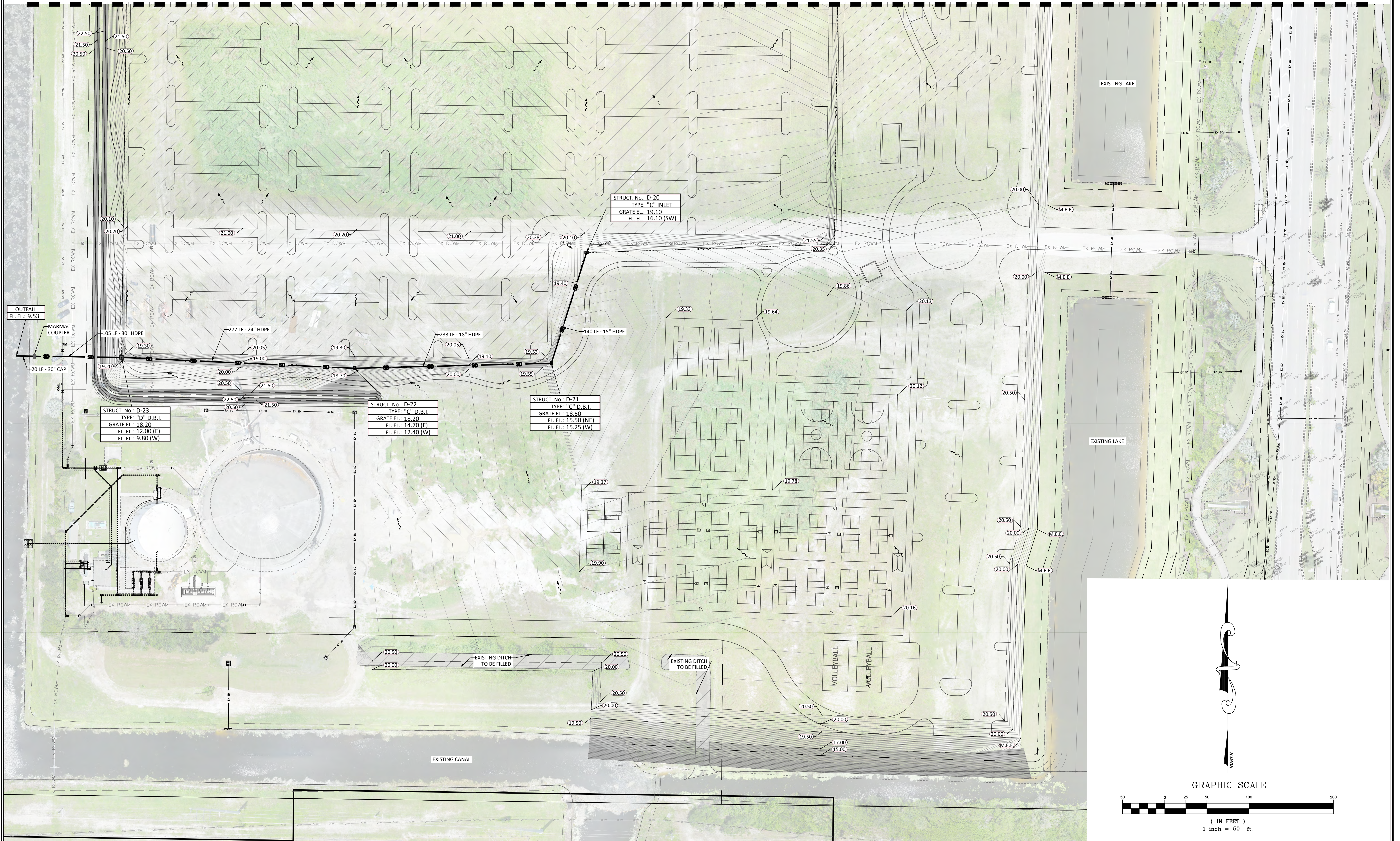
WESTLAKE, FLORIDA

| |
|-----------------|
| DATE 09/06/2023 |
| DRAWN BY RHT |
| F.B./ PG. N/A |
| SCALE 1"=50' |

RYAN D. WHEELER
 PROFESSIONAL ENGINEER
 LICENSE NO. 71477
 STATE OF FLORIDA
 = FOR THE FIRM =
 DATE: May 13, 2024

| |
|--------------|
| JOB # 8500 |
| SHT. NO. |
| 02 |
| OF 06 SHEETS |

MATCHLINE
(SHEET NO. 02)



| REVISIONS | DATE | BY |
|-----------|------------|-----|
| 1 | 01/17/2023 | RHT |

FILE NAME: S01_Park_Drainage.dwg

CAULFIELD & WHEELER, INC.
 CIVIL ENGINEERING - LAND PLANNING
 LANDSCAPE ARCHITECTURE - SURVEYING
 7900 GLADES ROAD - SUITE 100
 BOCA RATON, FLORIDA 33434
 PHONE (561) 392-1991 / FAX (561) 750-1452

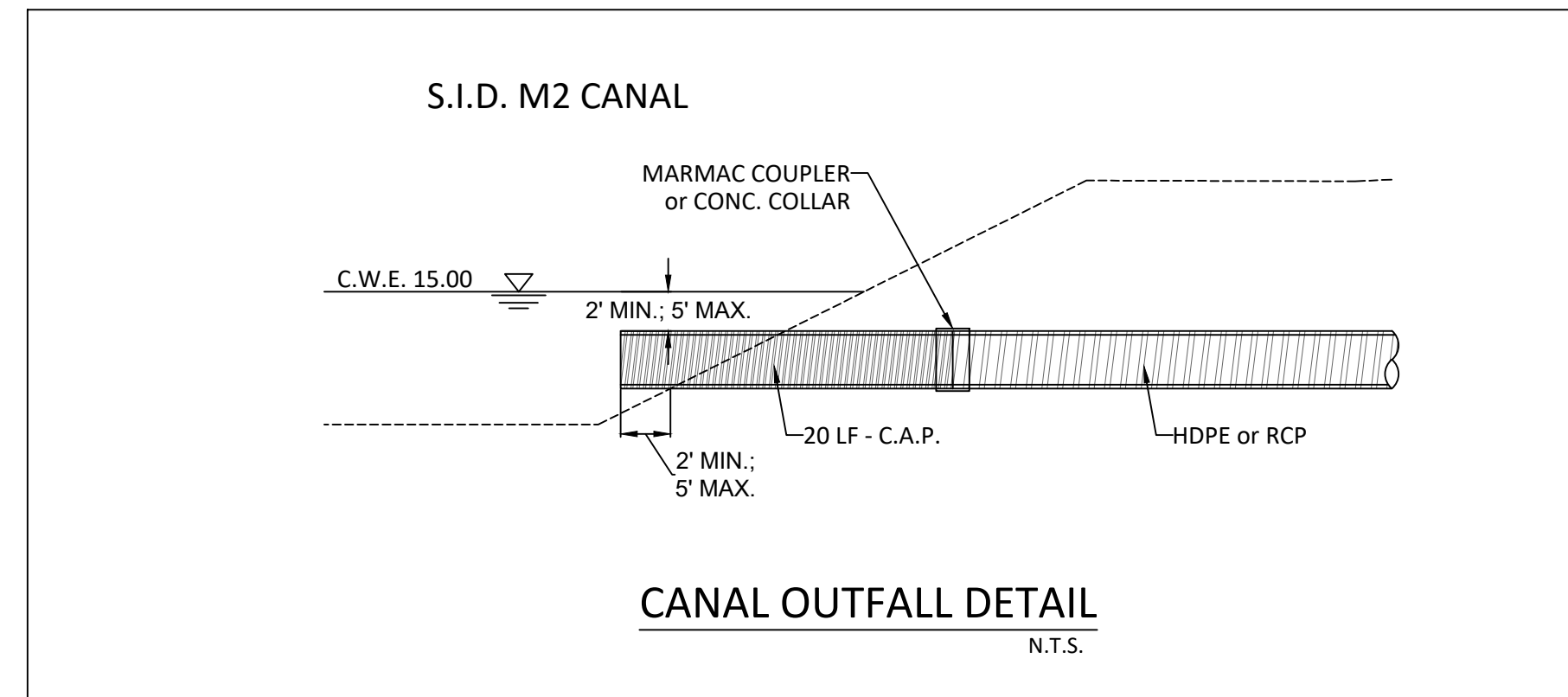
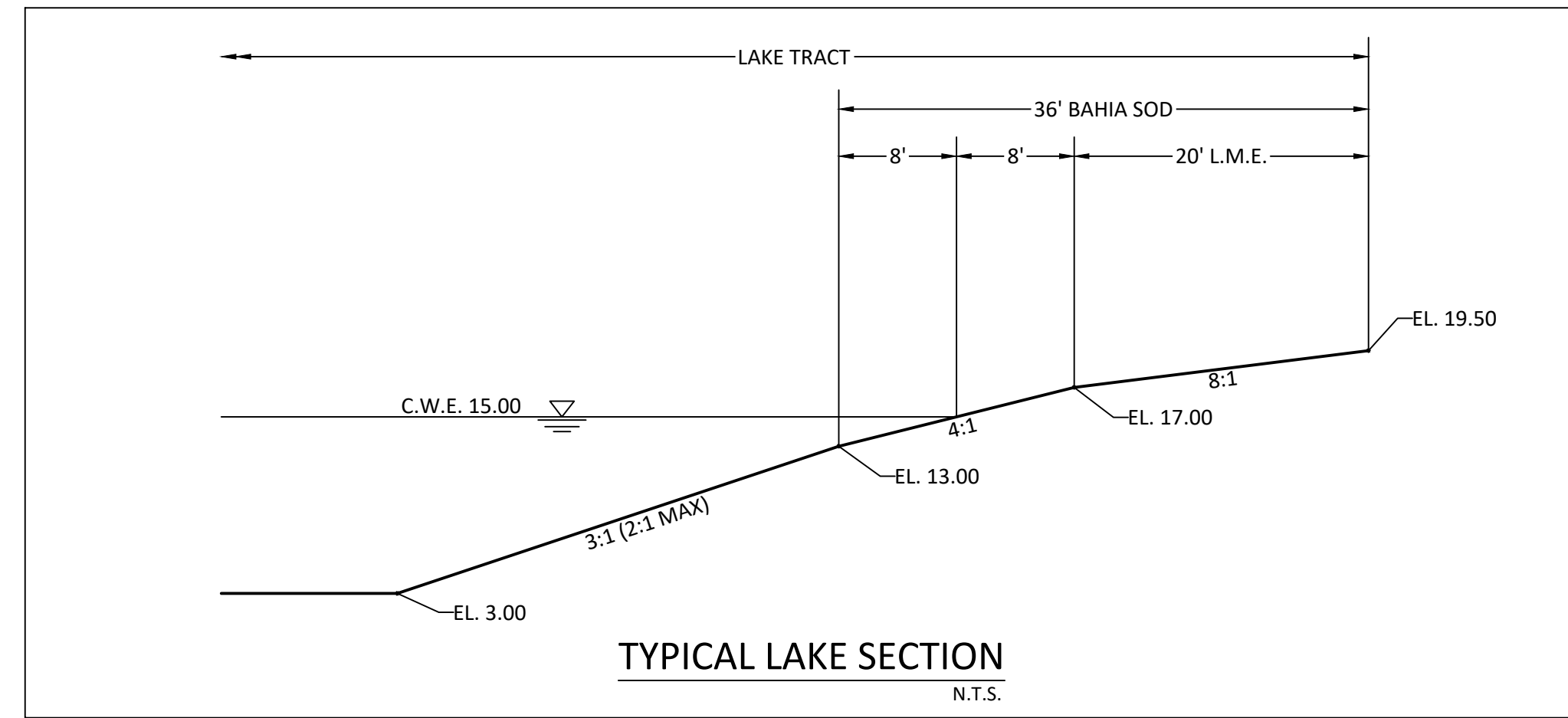


SEMINOLE IMPROVEMENT DISTRICT /
 WESTLAKE PARK PARCEL C-4
DRAINAGE IMPROVEMENTS
 WESTLAKE, FLORIDA

DATE 09/06/2023
 DRAWN BY RHT
 F.B./ PG. N/A
 SCALE 1"=50'

RYAN D. WHEELER
 PROFESSIONAL ENGINEER
 LICENSE NO. 71477
 STATE OF FLORIDA
 = FOR THE FIRM =
 DATE May 13, 2024

JOB # 8500
 SHT. NO.
03
 OF 06 SHEETS



STORM DRAIN PIPE IS REQUIRED TO COMPLY WITH THE FOLLOWING STANDARDS

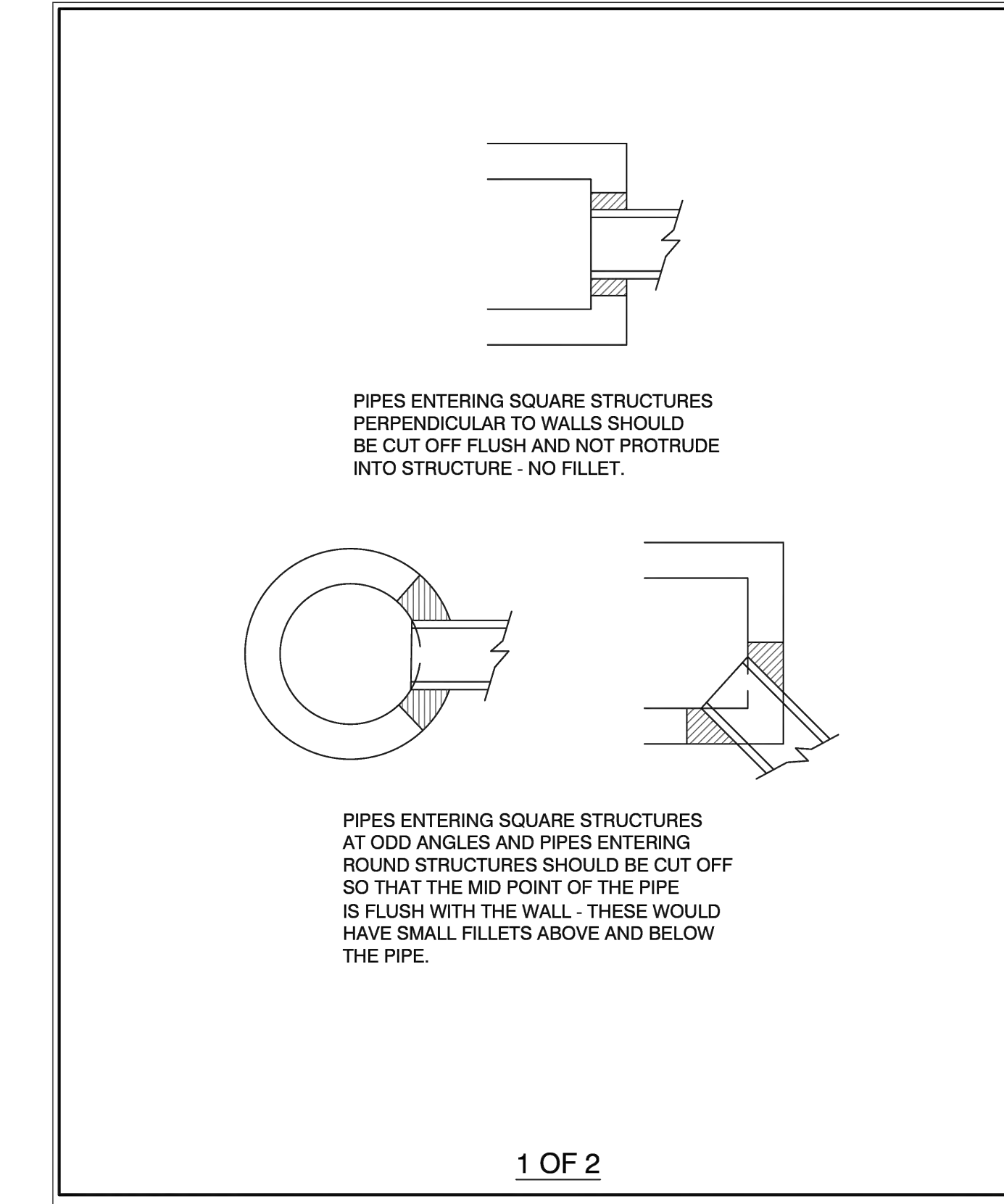
- ROAD CROSS DRAIN PIPE
 - ACCEPTABLE TYPES-REINFORCED CONCRETE, GALVANIZED, CORRUGATED METAL, CORRUGATED ALUMINUM, HDPE, A2000 PVC, OR OTHER FDOT APPROVED MATERIALS
 - MINIMUM SIZE-FIFTEEN (15) INCHES DIAMETER OR EQUAL.
 - ENDWALL, INLET, MANHOLE OR MITERED END SECTION WITH CONCRETE COLLAR REQUIRED AT EACH END. PROTRUDING, SUBMERGED PIPES ARE ACCEPTABLE BUT SHALL HAVE A MINIMUM OF 2' OF WATER ABOVE THE CROWN OF PIPE AND SHALL EXTEND NO LESS THAN 2' BEYOND THE LAKE SLOPE (INTO THE WATER). THE PROTRUDING PIPE SHALL BE CMP WITH A CONCRETE COLLAR CONNECTION TO RCP/HDPE.
- ROAD SIDE-DRAIN PIPE
 - ACCEPTABLE TYPES-REINFORCED CONCRETE, GALVANIZED, CORRUGATED METAL, CORRUGATED ALUMINUM, HDPE, A2000 PVC, OR OTHER FDOT APPROVED MATERIALS
 - MINIMUM SIZE-15 (15) INCHES DIAMETER OR EQUAL.
- STORM SEWER PIPE
 - ACCEPTABLE TYPES-REINFORCED CONCRETE, GALVANIZED, CORRUGATED METAL, CORRUGATED ALUMINUM, HDPE, A2000 PVC, OR OTHER FDOT APPROVED MATERIALS
 - MINIMUM SIZE-15 (15) INCHES DIAMETER OR EQUAL.
 - INLET OR MANHOLE REQUIRED AT EACH CHANGE OF ALIGNMENT OR GRADE

LATEST REVISION DATE: 06/04/2023 NOT TO SCALE

CAULFIELD & WHEELER, INC. CIVIL ENGINEERING - LAND PLANNING LANDSCAPE ARCHITECTURE - SURVEYING 7900 GLADES ROAD - SUITE 100 BOCA RATON, FL ORLA 33434 PHONE (561) 392-1991 / FAX (561) 750-1452

STORM DRAIN PIPE MATERIALS

SD-05

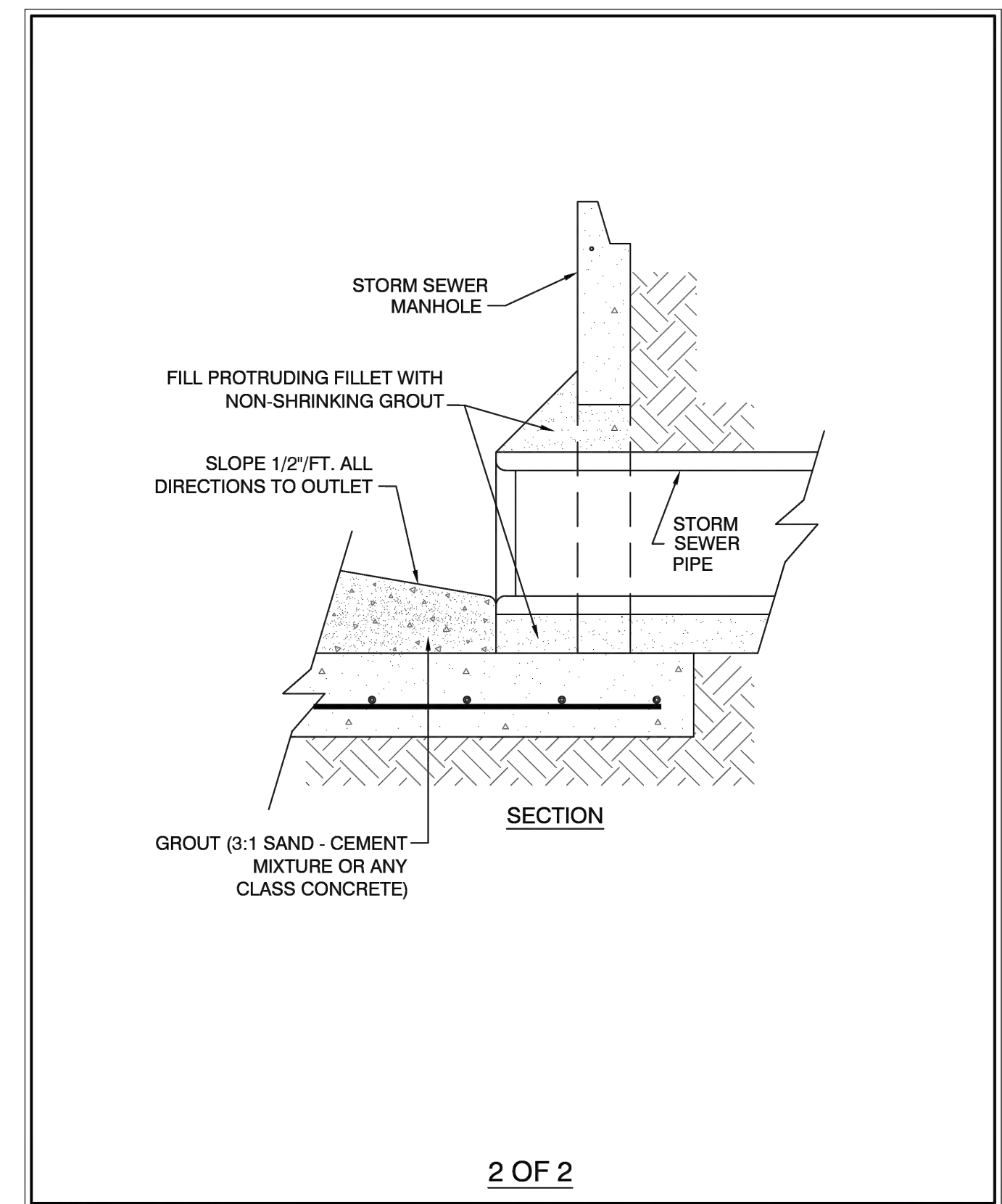


LATEST REVISION DATE: 06/01/18 NOT TO SCALE

CAULFIELD & WHEELER, INC. CIVIL ENGINEERING - LAND PLANNING LANDSCAPE ARCHITECTURE - SURVEYING 7900 GLADES ROAD - SUITE 100 BOCA RATON, FL ORLA 33434 PHONE (561) 392-1991 / FAX (561) 750-1452

STRUCTURE PIPE GROUTING DETAIL (1 of 2)

SD-06

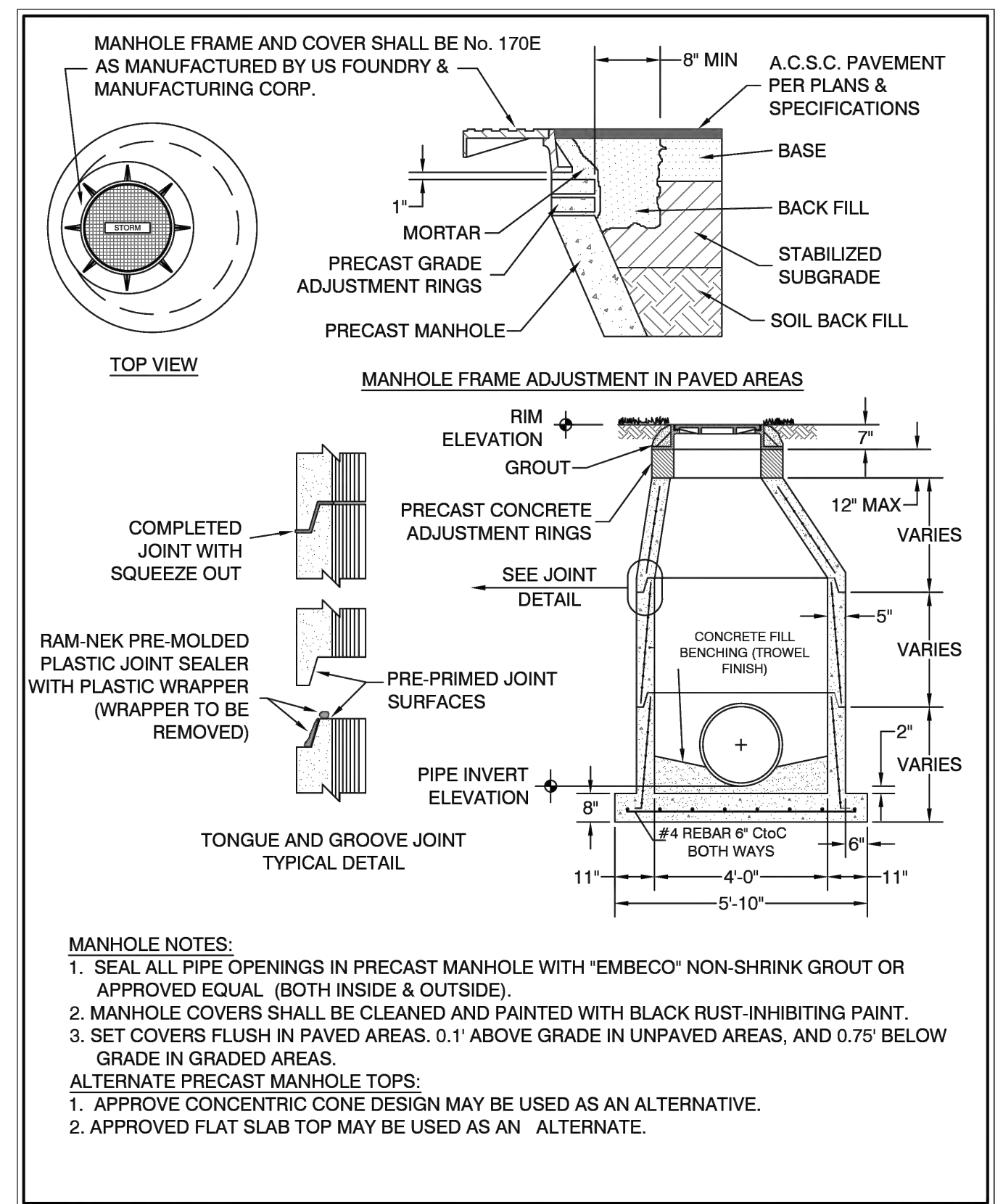


LATEST REVISION DATE: 06/01/18 NOT TO SCALE

CAULFIELD & WHEELER, INC. CIVIL ENGINEERING - LAND PLANNING LANDSCAPE ARCHITECTURE - SURVEYING 7900 GLADES ROAD - SUITE 100 BOCA RATON, FL ORLA 33434 PHONE (561) 392-1991 / FAX (561) 750-1452

STRUCTURE PIPE GROUTING DETAIL (2 of 2)

SD-07

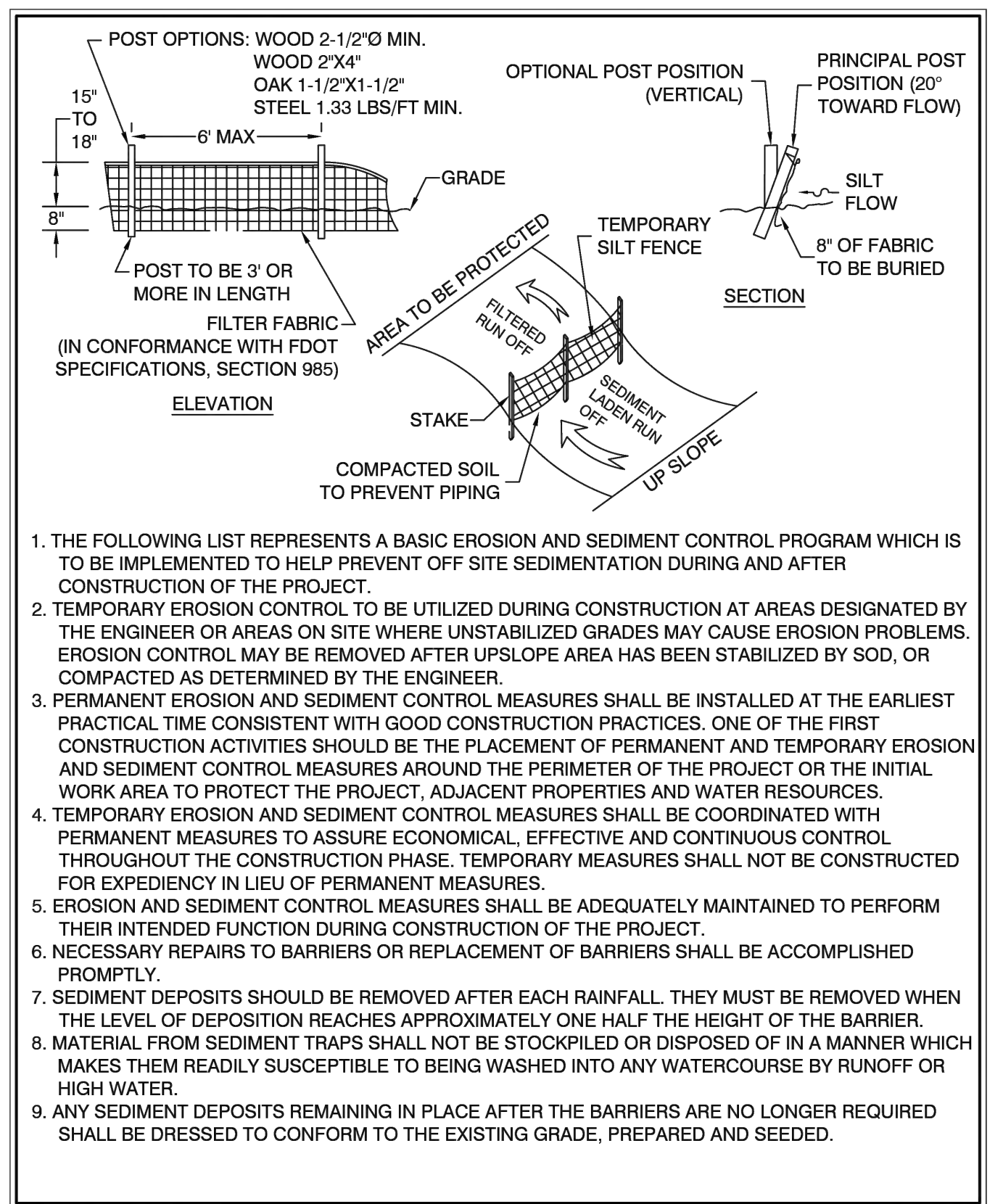


LATEST REVISION DATE: 06/01/18 NOT TO SCALE

CAULFIELD & WHEELER, INC. CIVIL ENGINEERING - LAND PLANNING LANDSCAPE ARCHITECTURE - SURVEYING 7900 GLADES ROAD - SUITE 100 BOCA RATON, FL ORLA 33434 PHONE (561) 392-1991 / FAX (561) 750-1452

STORM SEWER MANHOLE DETAIL

SD-08

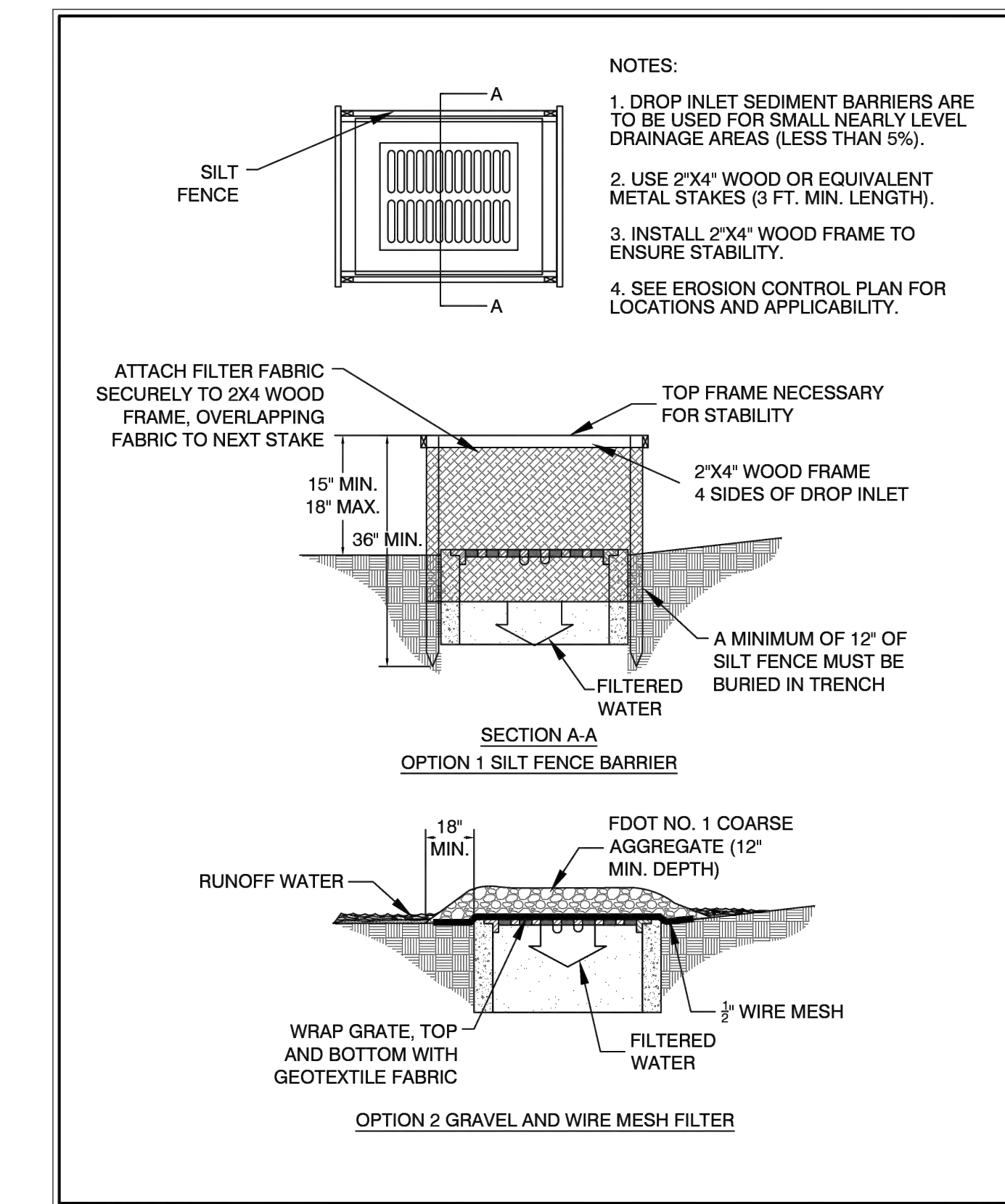


LATEST REVISION DATE: 06/01/18 NOT TO SCALE

CAULFIELD & WHEELER, INC. CIVIL ENGINEERING - LAND PLANNING LANDSCAPE ARCHITECTURE - SURVEYING 7900 GLADES ROAD - SUITE 100 BOCA RATON, FL ORLA 33434 PHONE (561) 392-1991 / FAX (561) 750-1452

SILT FENCE AND EROSION CONTROL DETAIL

PP-01



LATEST REVISION DATE: 06/01/18 NOT TO SCALE

CAULFIELD & WHEELER, INC. CIVIL ENGINEERING - LAND PLANNING LANDSCAPE ARCHITECTURE - SURVEYING 7900 GLADES ROAD - SUITE 100 BOCA RATON, FL ORLA 33434 PHONE (561) 392-1991 / FAX (561) 750-1452

DROP INLET SEDIMENT FILTER DETAIL

PP-02

| | |
|---------------------------------|--|
| BY | |
| DATE | |
| REVISIONS | |
| FILE NAME: SD_Perf_Drainage.dwg | |

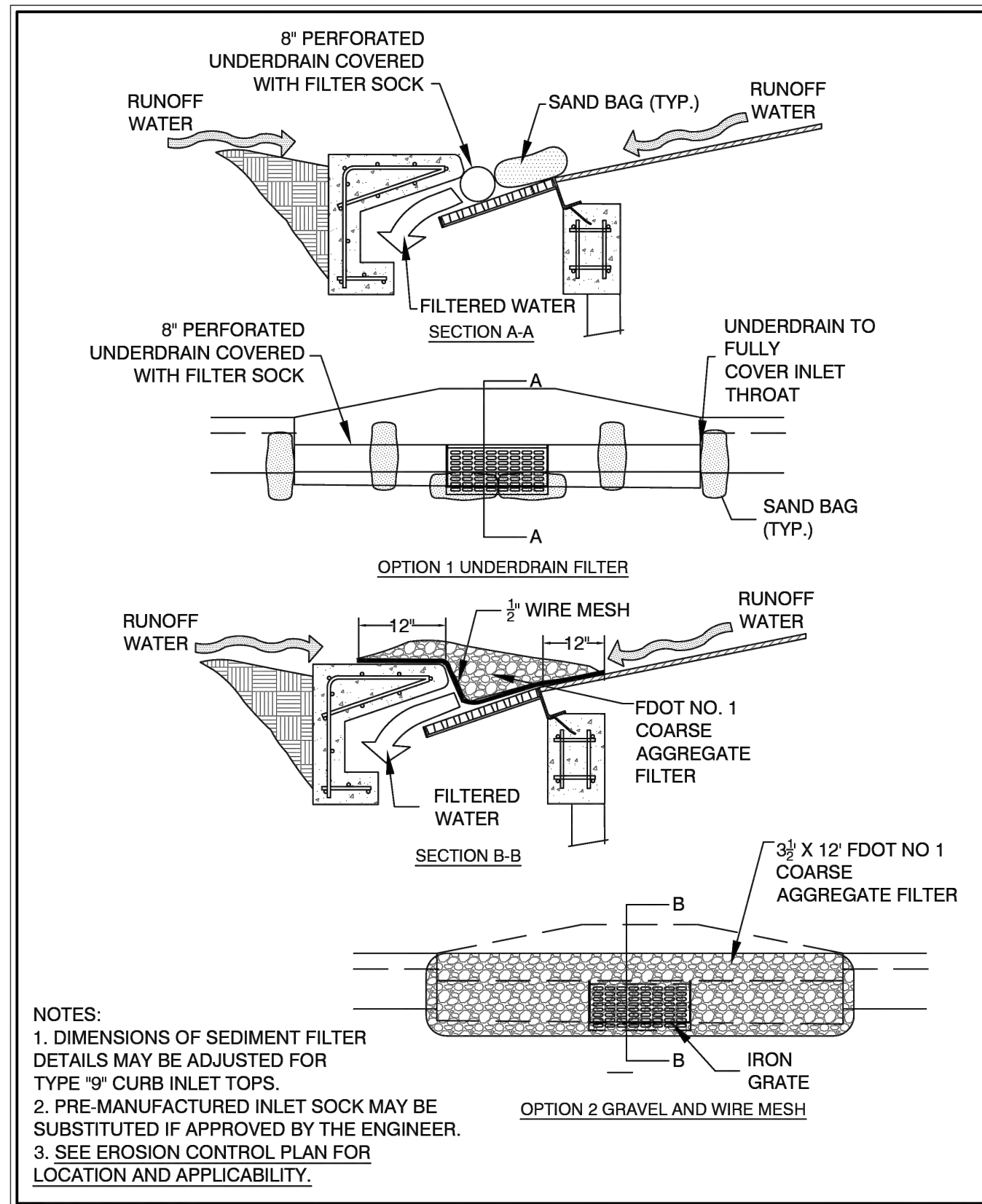
CAULFIELD & WHEELER, INC.
 CIVIL ENGINEERING - LAND PLANNING
 LANDSCAPE ARCHITECTURE - SURVEYING
 7900 GLADES ROAD - SUITE 100
 BOCA RATON, FLORIDA 33434
 PHONE (561) 392-1991 / FAX (561) 750-1452

SEMINOLE IMPROVEMENT DISTRICT / WESTLAKE PARK PARCEL C-4
PAVING, GRADING & DRAINAGE DETAILS
 WESTLAKE, FLORIDA

| | |
|------------|------------|
| DATE | 09/06/2023 |
| DRAWN BY | RHT |
| F.B./ P.C. | N/A |
| SCALE | N/A |

RYAN D. WHEELER
 PROFESSIONAL ENGINEER
 LICENSE NO. 71477
 STATE OF FLORIDA
 - FOR THE FIRM -
 DATE: May 13, 2024

| | |
|----------|-----------|
| JOB # | 8500 |
| SHT. NO. | 03 |
| OF | 06 SHEETS |



NOTES:
 1. DIMENSIONS OF SEDIMENT FILTER DETAILS MAY BE ADJUSTED FOR TYPE '9" CURB INLET TOPS.
 2. PRE-MANUFACTURED INLET SOCK MAY BE SUBSTITUTED IF APPROVED BY THE ENGINEER.
 3. SEE EROSION CONTROL PLAN FOR LOCATION AND APPLICABILITY.

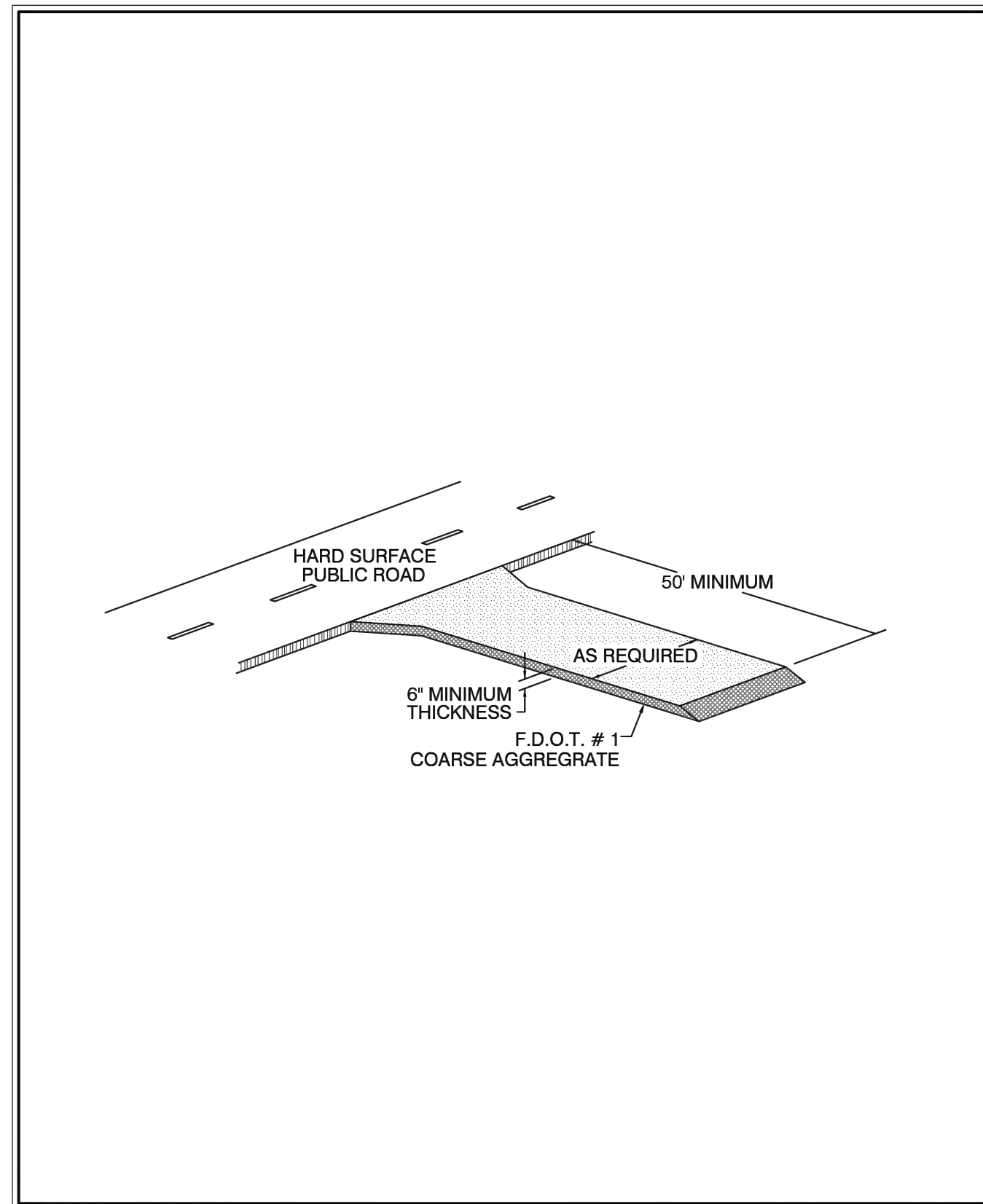
LATEST REVISION DATE: 09/01/18 NOT TO SCALE

CAULFIELD & WHEELER, INC.
 CIVIL ENGINEERING - LAND PLANNING
 LANDSCAPE ARCHITECTURE - SURVEYING
 7900 GLADES ROAD - SUITE 100
 BOCA RATON, FLORIDA 33434
 PHONE: (561) 392-1991 / FAX: (561) 750-1452

CURB INLET SEDIMENT FILTER DETAIL

SEMIOLE Improvement District
 PP-03

FILE NAME: 01_S0 POLLUTION PREVENTION DETAILS (P)1.DWG



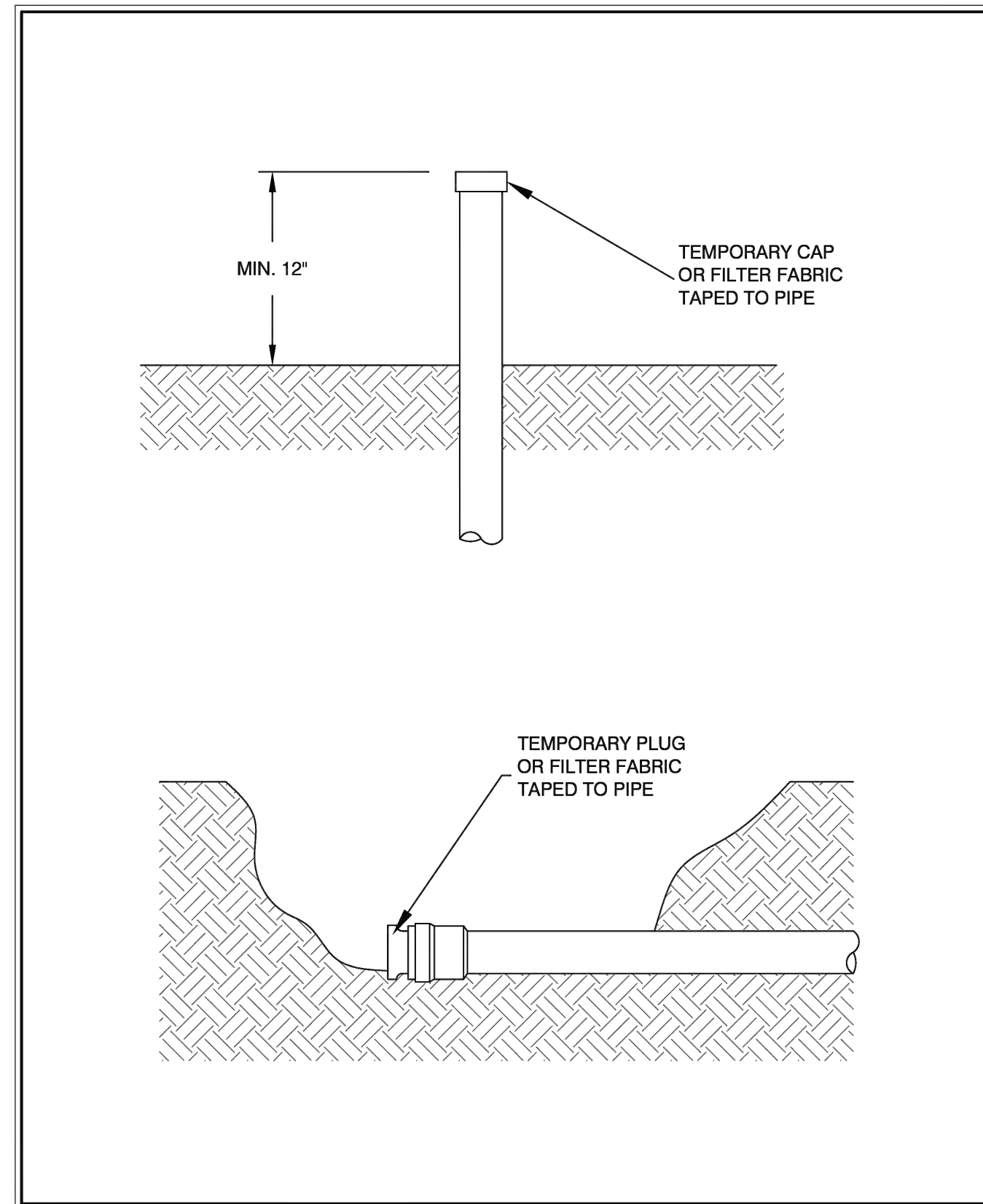
LATEST REVISION DATE: 09/01/18 NOT TO SCALE

CAULFIELD & WHEELER, INC.
 CIVIL ENGINEERING - LAND PLANNING
 LANDSCAPE ARCHITECTURE - SURVEYING
 7900 GLADES ROAD - SUITE 100
 BOCA RATON, FLORIDA 33434
 PHONE: (561) 392-1991 / FAX: (561) 750-1452

GRAVEL CONSTRUCTION ENTRANCE DETAIL

SEMIOLE Improvement District
 PP-04

FILE NAME: 01_S0 POLLUTION PREVENTION DETAILS (P)5.DWG



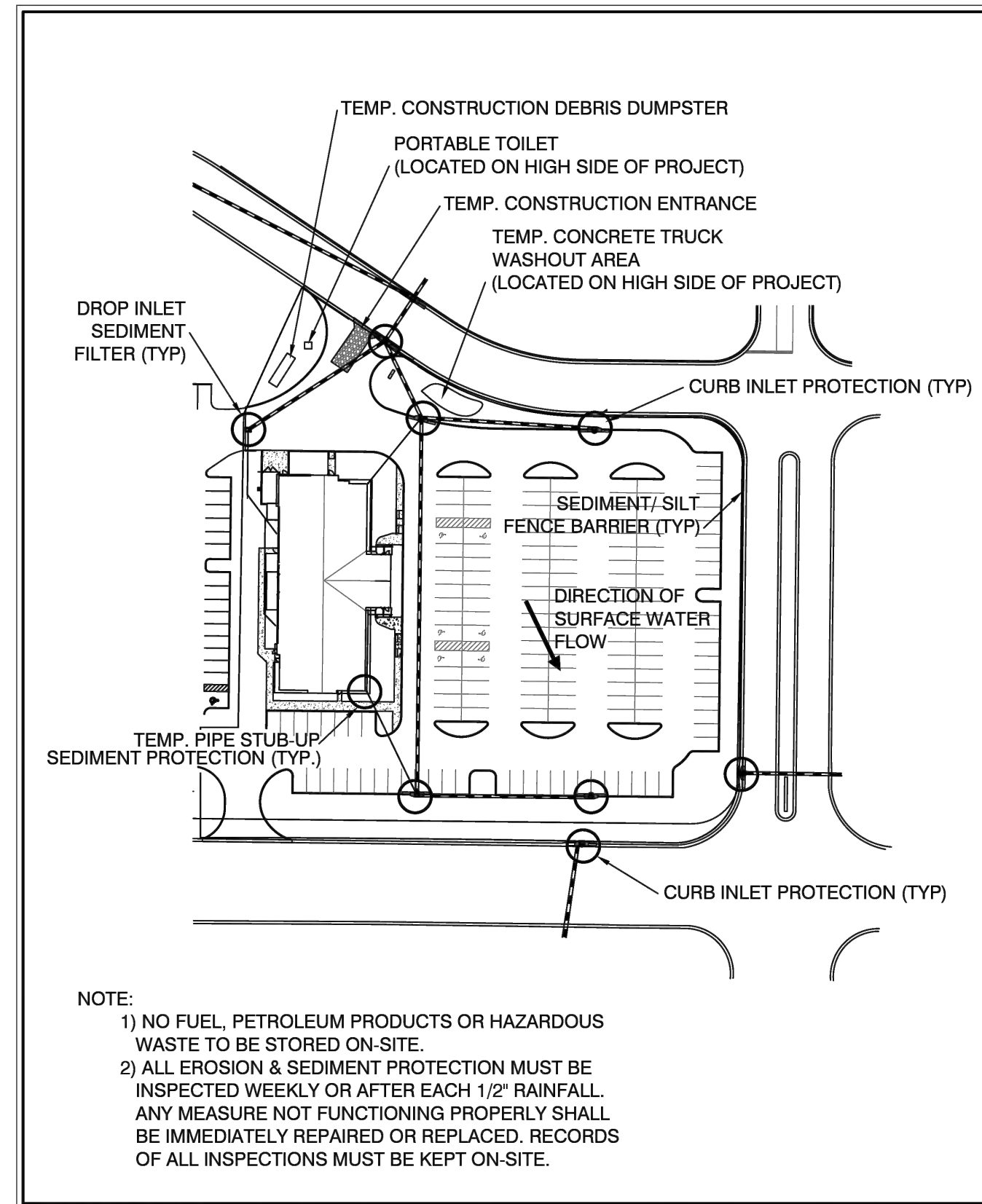
LATEST REVISION DATE: 09/01/18 NOT TO SCALE

CAULFIELD & WHEELER, INC.
 CIVIL ENGINEERING - LAND PLANNING
 LANDSCAPE ARCHITECTURE - SURVEYING
 7900 GLADES ROAD - SUITE 100
 BOCA RATON, FLORIDA 33434
 PHONE: (561) 392-1991 / FAX: (561) 750-1452

TEMPORARY PIPE END SEDIMENT PROTECTION DETAIL

SEMIOLE Improvement District
 PP-05

FILE NAME: 01_S0 POLLUTION PREVENTION DETAILS (P)5.DWG



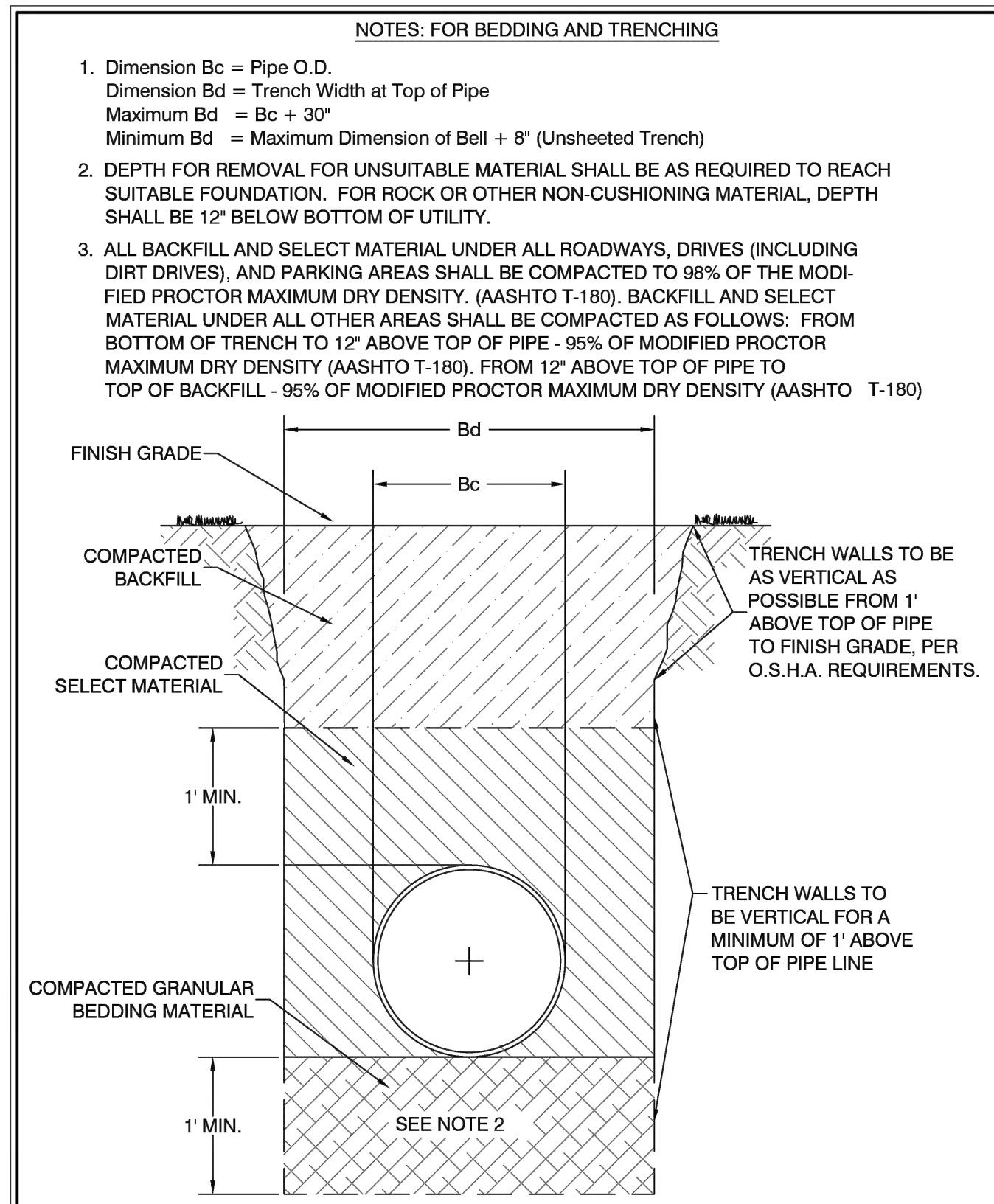
LATEST REVISION DATE: 09/01/18 NOT TO SCALE

CAULFIELD & WHEELER, INC.
 CIVIL ENGINEERING - LAND PLANNING
 LANDSCAPE ARCHITECTURE - SURVEYING
 7900 GLADES ROAD - SUITE 100
 BOCA RATON, FLORIDA 33434
 PHONE: (561) 392-1991 / FAX: (561) 750-1452

SAMPLE EROSION AND SEDIMENT CONTROL PLAN DETAIL

SEMIOLE Improvement District
 PP-06

FILE NAME: 01_S0 POLLUTION PREVENTION DETAILS (P)5.DWG



NOTES: FOR BEDDING AND TRENCHING

- Dimension Bc = Pipe O.D.
 Dimension Bd = Trench Width at Top of Pipe
 Maximum Bd = Bc + 30"
 Minimum Bd = Maximum Dimension of Bell + 8" (Unsheeted Trench)
- DEPTH FOR REMOVAL FOR UNSUITABLE MATERIAL SHALL BE AS REQUIRED TO REACH SUITABLE FOUNDATION. FOR ROCK OR OTHER NON-CUSHIONING MATERIAL, DEPTH SHALL BE 12" BELOW BOTTOM OF UTILITY.
- ALL BACKFILL AND SELECT MATERIAL UNDER ALL ROADWAYS, DRIVES (INCLUDING DIRT DRIVES), AND PARKING AREAS SHALL BE COMPACTED TO 98% OF THE MODIFIED PROCTOR MAXIMUM DRY DENSITY. (AASHTO T-180). BACKFILL AND SELECT MATERIAL UNDER ALL OTHER AREAS SHALL BE COMPACTED AS FOLLOWS: FROM BOTTOM OF TRENCH TO 12" ABOVE TOP OF PIPE - 95% OF MODIFIED PROCTOR MAXIMUM DRY DENSITY (AASHTO T-180). FROM 12" ABOVE TOP OF PIPE TO TOP OF BACKFILL - 95% OF MODIFIED PROCTOR MAXIMUM DRY DENSITY (AASHTO T-180)

LATEST REVISION DATE: 01/13/18 NOT TO SCALE

CAULFIELD & WHEELER, INC.
 CIVIL ENGINEERING - LAND PLANNING
 LANDSCAPE ARCHITECTURE - SURVEYING
 7900 GLADES ROAD - SUITE 100
 BOCA RATON, FLORIDA 33434
 PHONE: (561) 392-1991 / FAX: (561) 750-1452

STANDARD PIPE BEDDING DETAIL

SEMIOLE Improvement District
 GU-03

FILE NAME: 04_S0 GENERAL UTILITY DETAILS (G)3.DWG

| NO. | DATE | BY |
|-----|------|----|
| | | |
| | | |
| | | |
| | | |

CAULFIELD & WHEELER, INC.
 CIVIL ENGINEERING - LAND PLANNING
 LANDSCAPE ARCHITECTURE - SURVEYING
 7900 GLADES ROAD - SUITE 100
 BOCA RATON, FLORIDA 33434
 PHONE: (561) 392-1991 / FAX: (561) 750-1452

SEMIOLE Improvement District

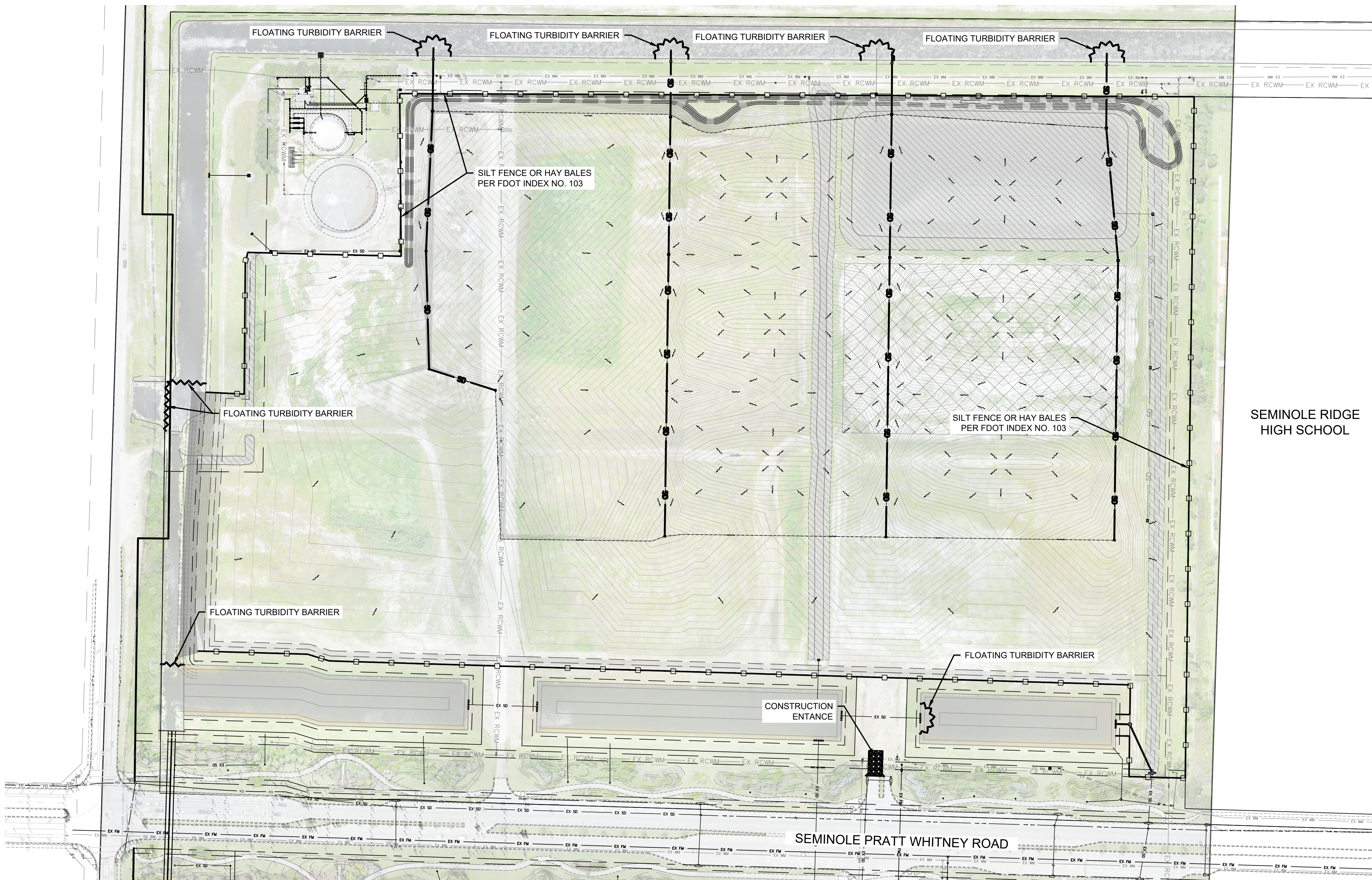
SEMIOLE IMPROVEMENT DISTRICT / WESTLAKE PARK PARCEL C-4

PAVING, GRADING, & DRAINAGE DETAILS
 WESTLAKE, FLORIDA

DATE 09/06/2023
 DRAWN BY RHT
 F.B./ PG. N/A
 SCALE N/A

RYAN D. WHEELER
 PROFESSIONAL ENGINEER
 LICENSE NO. 71477
 STATE OF FLORIDA
 - FOR THE FIRM -
 DATE: May 13, 2024

JOB # 8500
 SHT. NO.
04
 OF 06 SHEETS



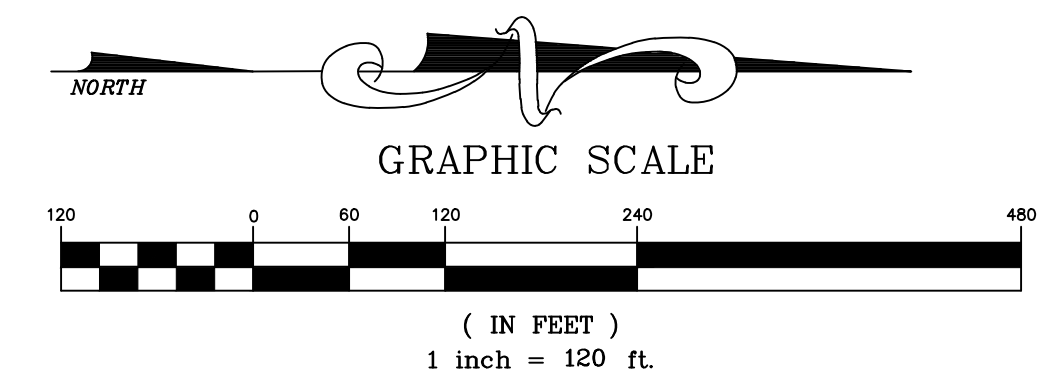
DEFINITIONS

1. COUNTY – PALM BEACH COUNTY
2. CONTRACTOR – UTILITY CONTRACTOR AND ALL UTILITY SUBCONTRACTORS
3. ENGINEER – ENGINEER RESPONSIBLE FOR INSPECTION AND CERTIFICATION

PROCEDURE

1. A PRE-CONSTRUCTION MEETING IS TO BE HELD PRIOR TO DELIVERY OF MATERIALS AND INITIATION OF ANY WATER AND SEWER CONSTRUCTION. THE MEETING SHALL BE ATTENDED BY THE COUNTY, CONTRACTOR, SUBCONTRACTORS, ENGINEER AND OTHER INTERESTED PARTIES.
2. ANY REVISIONS TO THE APPROVED PLANS MUST BE APPROVED BY THE COUNTY PRIOR TO THE PRE-CONSTRUCTION MEETING.
3. A MINIMUM OF THREE (3) COPIES OF THE CURRENT APPROVED PRODUCT LIST AND ALL NECESSARY SHOP DRAWINGS SHALL BE SUBMITTED FOR APPROVAL PRIOR TO SCHEDULING THE PRE-CONSTRUCTION MEETING. ALL PIPE MANUFACTURERS SHALL SUBMIT THREE (3) COPIES OF AN AFFIDAVIT THAT THE PIPE AND COATINGS WERE MANUFACTURED IN ACCORDANCE WITH AWWA C151/A21.51-91.
4. ALL APPLICABLE PERMITS MUST BE OBTAINED WITH COPIES PROVIDED TO THE COUNTY PRIOR TO COMMENCEMENT OF CONSTRUCTION.
5. THE CONTRACTOR SHALL MAINTAIN A CURRENT APPROVED SET OF CONSTRUCTION DOCUMENTS ON SITE AT ALL TIMES.
6. ALL MATERIALS SUPPLIED SHALL CONFORM TO PRODUCT LIST AND SHOP DRAWINGS AS APPROVED BY THE COUNTY PRIOR TO CONSTRUCTION. ALL REQUESTS FOR MATERIAL SUBSTITUTION SHALL BE APPROVED PRIOR TO DELIVERY OF THESE MATERIALS TO THE JOB SITE.
7. THE LOCATION OF THE EXISTING UTILITIES AS SHOWN ON THE PLANS ARE APPROXIMATE ONLY. THE EXACT LOCATIONS SHALL BE DETERMINED BY THE CONTRACTOR PRIOR TO CONSTRUCTION. IN ADDITION, THE CONTRACTOR SHALL BE RESPONSIBLE TO VERIFY IF OTHER UTILITIES (NOT SHOWN ON THE PLAN) EXIST WITHIN THE AREA OF CONSTRUCTION. SHOULD THERE BE UTILITY CONFLICTS, THE CONTRACTOR SHALL INFORM THE COUNTY AND NOTIFY THE RESPECTIVE UTILITY OWNER TO RESOLVE THE UTILITY CONFLICTS AND THE UTILITY ADJUSTMENTS AS REQUIRED.
8. THE CONTRACTOR SHALL BE RESPONSIBLE AT ALL TIMES THROUGHOUT THE DURATION OF CONSTRUCTION FOR THE PROTECTION OF EXISTING AND NEWLY INSTALLED UTILITIES FROM DAMAGE OR DISRUPTION OF SERVICE. THE CONTRACTOR SHALL BE RESPONSIBLE FOR TAKING SUCH MEASURES AS NECESSARY TO PROTECT THE HEALTH, SAFETY, AND WELFARE OF THOSE PERSONS HAVING ACCESS TO THE WORK SITE.
9. THE CONTRACTOR SHALL BE RESPONSIBLE FOR OBTAINING LOCATIONS OF ALL OTHER UTILITY FACILITIES.
10. THE CONTRACTOR SHALL SCHEDULE INSPECTIONS AND TESTS WITH THE COUNTY A MINIMUM OF 24 HOURS IN ADVANCE.
11. CONTRACTOR SHALL NOT DISTURB EXISTING COUNTY MAINS OR STRUCTURES WITHOUT THE PRESENCE OF A COUNTY INSPECTOR. COUNTY UTILITY SYSTEM VALVES AND APPURTENANCES MAY ONLY BE OPERATED BY COUNTY PERSONNEL.
12. FACILITIES PROPOSED HEREIN SHALL BE CONSTRUCTED IN ACCORDANCE WITH THE APPROVED PLANS. DEVIATIONS FROM THE APPROVED PLANS MUST BE APPROVED IN ADVANCE BY THE COUNTY.
13. UPON COMPLETION OF CONSTRUCTION AND PRIOR TO FINAL ACCEPTANCE OF THE WORK, A FINAL INSPECTION SHALL VERIFY PROPER ADHERENCE TO ALL FACETS OF THE PLANS AND SPECIFICATIONS.
14. PAVING, DRAINAGE AND TRAFFIC CONSTRUCTION SHALL CONFORM TO FLORIDA DEPARTMENT OF TRANSPORTATION ROADWAY AND DESIGN STANDARDS, STANDARD SPECIFICATIONS FOR ROAD AND BRIDGE CONSTRUCTION, MANUAL ON UNIFORM TRAFFIC CONTROL DEVICES (MUTCD) AND PALM BEACH COUNTY TYPICAL No. T-P-18 UNLESS SHOWN OTHERWISE.
15. AS-BUILT DRAWINGS SHALL BE PREPARED BY A REGISTERED LAND SURVEYOR, REGISTERED IN THE STATE OF FLORIDA, AND SUBMITTED BY THE CONTRACTOR TO THE COUNTY.

16. PRIOR TO COMMENCEMENT OF ANY EXCAVATION, THE CONTRACTOR SHALL COMPLY WITH FLORIDA STATUTE 553-851 FOR PROTECTION OF UNDERGROUND GAS PIPE LINES.
 17. CONTRACTOR SHALL NOTIFY SUNSHINE STATE ONE (1-800-432-4770) 48 HOURS IN ADVANCE OF CONSTRUCTION.
 18. GRADES SHOWN ON PLANS ARE FINISHED GRADES. THE CONTRACTOR SHALL BE REQUIRED TO ADJUST EXISTING SANITARY SEWER MANHOLE TOPS AND VALVE BOX COVERS TO FINISHED GRADE.
 19. CONTRACTOR SHALL MAINTAIN LOCAL TRAFFIC AT ALL TIMES DURING CONSTRUCTION AND SHALL BE REQUIRED TO PROVIDE ALL BARRICADES, LIGHTING, SIGNAGE AND FLAGMEN AS NECESSARY TO PROVIDE FOR THE SAFETY OF THE PUBLIC IN THE WORK AREA. THE CONTRACTOR SHALL SUBMIT A DETAILED TRAFFIC MAINTENANCE PLAN PRIOR TO CONSTRUCTION.
 20. EXISTING BASE MATERIAL THAT IS REMOVED DURING CONSTRUCTION SHALL NOT BE USED IN THE CONSTRUCTION OF NEW LIMEROCK BASE.
 21. ALL VEGETATION, DEBRIS, CONCRETE OR OTHER UNSUITABLE MATERIAL SHALL BE LEGALLY DISPOSED OF OFF-SITE IN AN AREA AT THE CONTRACTORS EXPENSE.
 22. CONTRACTOR SHALL UTILIZE CONSTRUCTION METHODS AND DEVICES, SUCH AS TURBIDITY SCREENS, CURTAINS AND FLOATING SILT BARRIERS WHERE NECESSARY IN ORDER TO COMPLY WITH ALL STATE AND LOCAL WATER QUALITY STANDARDS.
 23. ALL REINFORCED CONCRETE STORM SEWER PIPE SHALL BE CLASS III, UNLESS OTHERWISE NOTED.
 24. ALL PAVED SURFACES SHALL BE PROPERLY MARKED PRIOR TO HOURS OF DARKNESS. PERMANENT PAVEMENT MARKING STALLS SHALL BE LAID OUT USING MARKING CHALK. LAYOUT TO BE REVIEWED BY THE COUNTY PRIOR TO PLACEMENT OF FINAL MARKING.
 25. EMBANKMENT (FILL) AND EXCESS MATERIAL REQUIRED FOR ROADWAY RECONSTRUCTION AND UTILITY INSTALLATIONS SHALL BE SUPPLIED AND/OR DISPOSED OF BY THE CONTRACTOR. ALL COSTS ASSOCIATED WITH EARTHWORK REQUIREMENTS TO COMPLETE THE ROADWAY RECONSTRUCTION AND UTILITY IMPROVEMENTS SHALL BE INCLUDED IN THE COSTS OF OTHER APPROPRIATE PAY ITEMS.
 26. CONTINUITY OF WATER AND SEWER SERVICE TO COUNTY UTILITY CUSTOMERS SHALL BE MAINTAINED THROUGHOUT THE DURATION OF THIS PROJECT. IF A BREAK IN SERVICE IS UNAVOIDABLE TO ACCOMMODATE CONNECTION OF NEW FACILITIES, IT SHALL BE SCHEDULED FOR OFF PEAK HOURS WITH THE COUNTY. DETERMINATION OF SERVICE BREAK REQUIREMENT WILL BE MADE BY THE COUNTY.
- SITE INFORMATION BASED ON A SURVEY PREPARED BY: **GEOPONT SURVEYING / CAULFIELD & WHEELER, INC.**
27. RELOCATION OF UTILITY POLES AND GAS PIPE LINES SHALL BE COORDINATED BY THE CONTRACTOR WITH FLORIDA POWER AND LIGHT, AND FLORIDA PUBLIC UTILITIES, RESPECTIVELY. EACH UTILITY HAS BEEN NOTIFIED THAT THEY WILL BE REQUIRED TO RELOCATE THEIR UTILITIES.



| REVISIONS | DATE | BY |
|-----------|------|----|
| | | |
| | | |
| | | |
| | | |

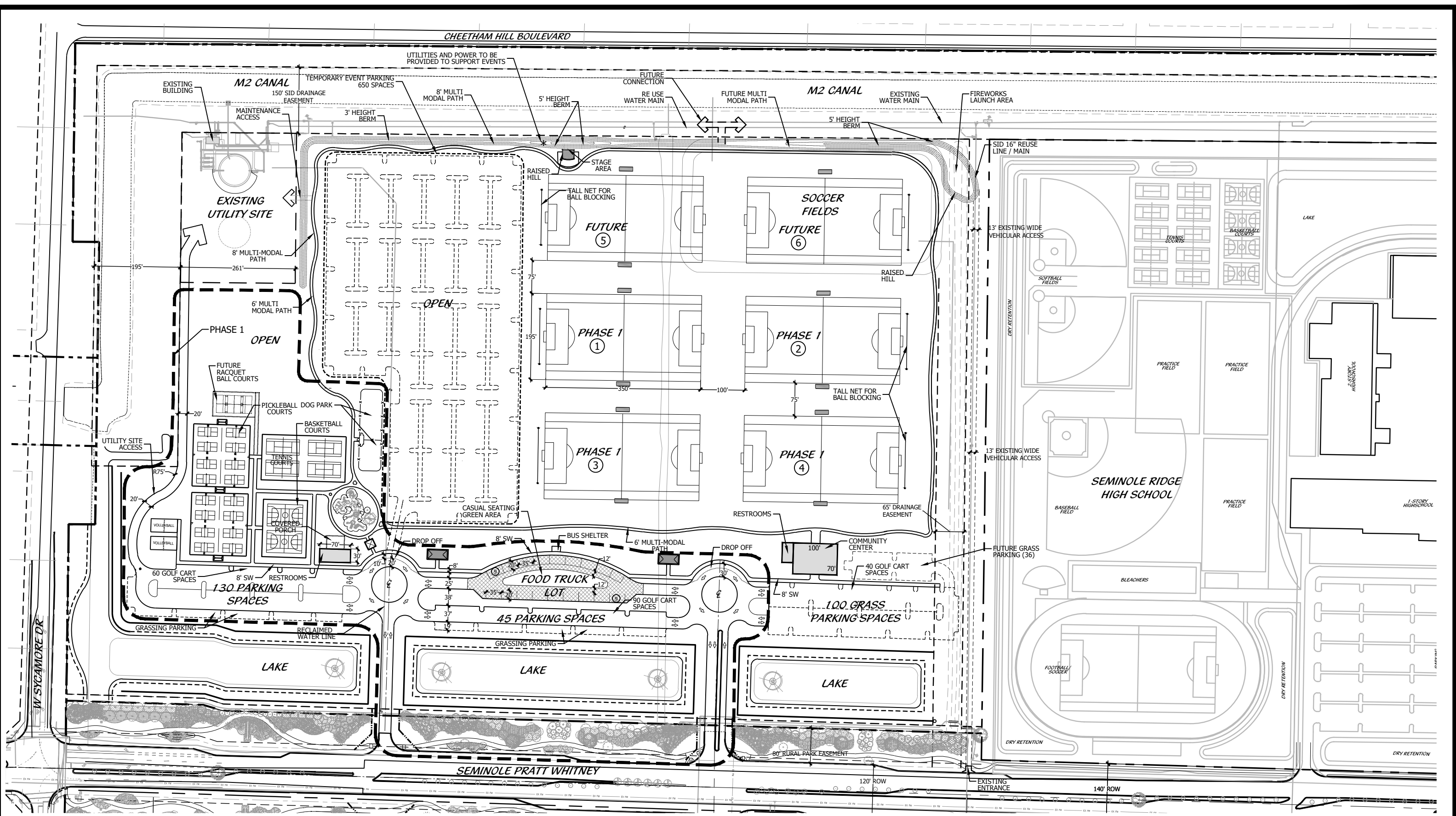
CAULFIELD & WHEELER, INC.
 CIVIL ENGINEERING - LAND PLANNING
 LANDSCAPE ARCHITECTURE - SURVEYING
 7900 GLADES ROAD - SUITE 100
 BOCA RATON, FLORIDA 33434
 PHONE (561) 392-1991 / FAX (561) 750-1452

SEMINOLE IMPROVEMENT DISTRICT /
 WESTLAKE PARK PARCEL C-4
POLLUTION PREVENTION PLAN
 WESTLAKE, FLORIDA

DATE 09/06/2023
 DRAWN BY RHT
 F.B./ P.C. N/A
 SCALE 1"=120'

RYAN D. WHEELER
 PROFESSIONAL ENGINEER
 LICENSE NO. 71477
 STATE OF FLORIDA
 FOR THE FIRM -
 DATE: May 13, 2024

JOB # 8500
 SHT. NO.
06
 OF 06 SHEETS



WESTLAKE PARK CONCEPT 1.2B

PARCEL C-4
City of Westlake, Florida



ENGINEER'S COST ESTIMATE

PROJECT: *SID PARK SITE - INITIAL PUBLIC PHASE*

A. SID PARK SITE INITIAL PUBLIC PHASE

| ITEM # | DESCRIPTION | UNIT | RATE | QTY | COST |
|--------|------------------------------------|------|-----------------|--------|-----------------|
| A1 | SITWORK (EARTWORK) | LS | \$ 100,000.00 | 1 | \$ 100,000.00 |
| A2 | SITWORK (PAVING) | SY | \$ 45.00 | 16,825 | \$ 757,125.00 |
| A3 | SITWORK (SIDEWALKS) | SY | \$ 60.00 | 2,395 | \$ 143,700.00 |
| A4 | SITWORK (UTILITIES) | LS | \$ 475,000.00 | 1 | \$ 475,000.00 |
| A5 | SITWORK (DRAINAGE) | LS | \$ 685,000.00 | 1 | \$ 685,000.00 |
| A6 | SPORTS COURTS | SF | \$ 16.00 | 68,708 | \$ 1,099,328.00 |
| A7 | SOCCER FIELDS | EA | \$ 550,000.00 | 4 | \$ 2,200,000.00 |
| A8 | RESTROOM BUILDING | SF | \$ 275.00 | 2,100 | \$ 577,500.00 |
| A9 | PLAYGROUND ALLOWANCE | LS | \$ 750,000.00 | 1 | \$ 750,000.00 |
| A10 | LIGHTING ALLOWANCE | LS | \$ 2,500,000.00 | 1 | \$ 2,500,000.00 |
| A11 | LANDSCAPE & IRRIGATION | LS | \$ 250,000.00 | 1 | \$ 250,000.00 |
| A12 | GENERAL CONDITIONS | LS | \$ 150,000.00 | 1 | \$ 150,000.00 |
| A13 | PERMITTING, ENGINEERING, SURVEYING | LS | \$ 300,000.00 | 1 | \$ 300,000.00 |
| | | | | | |
| | | | | | |

SUB-TOTAL - A. SID PARK SITE - INITIAL PUBLIC PHASE **\$ 9,987,653.00**

CONTINGENCIES (30%) **\$ 2,996,295.90**

TOTAL COST ESTIMATE **\$ 12,983,948.90**

Ryan D. Wheeler, P.E.
 Florida P.E. No. 71477

Date