



**A G E N D A**  
**CITY OF WAUPUN BOARD OF PUBLIC WORKS**  
**MEETING**  
Waupun City Hall – 201 E. Main Street, Waupun WI  
Monday, August 19, 2024 at 4:30 PM

**The City of Waupun Board of Public Works and Facilities Committee will meet in-person, virtually and teleconference. Instructions to join the meeting are provided below:**

Virtual: <https://us02web.zoom.us/j/81987138114>

Meeting ID: 819 8713 8114

Phone: 312 626 6799 US (Chicago)

**CALL TO ORDER**

**ROLL CALL**

**PERSONS WISHING TO ADDRESS THE BOARD OF PUBLIC WORKS**--State name, address, and subject of comments.  
(2 Minutes)

***No Public Participation after this point.***

**FUTURE MEETINGS AND GATHERING INVOLVING THE BOARD OF PUBLIC WORKS**

1. Next Regularly Scheduled Meeting is September 10, 2024, 4:30 pm

**CONSIDERATION - ACTION**

- [2.](#) Approve Minutes from July 9, 2024 Board of Public Works Meeting
- [3.](#) Authorize Replacement of Damaged Flatbed 39-06 with New Vehicle
- [4.](#) Approve Rebid for City Hall Reroof of Existing Ballasted Roofs with EPDM Adhered Roof System (Roof Areas: East, West and North, 201 E Main Street)
- [5.](#) Emergency Declaration City Garage Roof
- [6.](#) Recommend Public Works Garage Emergency Roof Replacement Bid to Council for Approval

**ADJOURNMENT**

*Upon reasonable notice, efforts will be made to accommodate disabled individuals through appropriate aids and services. For additional information, contact the City Clerk at 920-324-7915.*



## Minutes - City of Waupun

Board of Public Works

Tuesday, July 9, 2024 – City Council Chambers

### CALL TO ORDER

Chairman Matoushek calls the meeting to order at 4:30

### ROLL CALL:

Citizens: Dave Rens, Dale Heeringa, Andrew Sullivan, Gregg Zonnefield

Alderman: Mike Matoushek, Kambria Ledesma, Pete Kaczmarski

Ex-officio: DPW Jeff Daane

Additional attendees: Mayor Rohn Bishop, Remi

### FUTURE MEETINGS AND GATHERING INVOLVING THE BOARD OF PUBLIC WORKS

1. There is an election scheduled the day of the regular meeting, this board will reschedule based on when the Council reschedules their meeting.

### CONSIDERATION - ACTION

2. Nominate and Appoint a Clerk for Board of Public Works, Zonnefield will be vacating the position at this time. Matoushek nominates Ledesma, she accepts. Motion by Heeringa, seconded by Zonnefield. Motion passes unanimously.
3. Approve Minutes from May 14, 2024 Board of Public Works Meeting. Motion by Heeringa, seconded by Sullivan. Motion passes unanimously.
4. Nominate and Appoint a Vice Chair for Board of Public Works. Ledesma nominates Kaczmarski, he accepts. Motion by Ledesma, seconded by Rens. Motion passes unanimously.
5. Approve Landscape Contractor for 520 McKinley Street Project (New Community Center). Motion by Zonnefield recommending to the Common Council the low quote from Rens Nursery Retail in the amount of \$19,204.85. This includes up to 7 trees donated at a value of \$2,000. Seconded by Rens. Motion passes unanimously.
6. Approve Contractor to Pave Area Around Railroad Tracks on Lincoln St. Motion by Ledesma to recommend to the Common Council the low quote from Northeast Asphalt in the amount of \$10,920 to complete paving in the area surrounding the railroad crossing on Lincoln Street. It is understood that final work is contingent on the railroad obtaining approval and funding to complete the railroad crossing repair. Seconded by Kaczmarski, who also asked that if this project cannot be completed this year that the funds be rolled over to 2025. Motion passes unanimously.
7. Approve Replacement of Damaged Flatbed Truck 39-06. The amount the truck was totaled for does not cover the cost to replace with a truck of similar quality. Motion by Ledesma to recommend to the Common Council the purchase of a quality used flatbed replacement vehicle and authorize staff to negotiate the

purchase price in an amount not to exceed \$30,000. Seconded by Zonnefield.  
Motion passes unanimously.

DISCUSSION ITEMS

City garage sustained roof damage from the hailstorm that resulted in a leak.  
This will need to be addressed soon.

Motion by Sullivan to adjourn, seconded by Rens.

ADJOURNMENT

Respectfully submitted,

A handwritten signature in black ink, appearing to read "Kambria Ledesma". The signature is fluid and cursive, with a long horizontal flourish extending to the right.

Kambria Ledesma, Clerk  
City of Waupun



**MEETING DATE:** 8/19/24

**TITLE:** Authorize Replacement of Damaged Flatbed 39-06 with New Vehicle

**AGENDA SECTION:** RECOMMENDATION  
BOARDS & COMMISSIONS

**PRESENTER:** Jeff Daane, Director of Public Works

DEPARTMENT GOAL(S) SUPPORTED <i>(if applicable)</i>	FISCAL IMPACT
Public Infrastructure	\$55,000

**ISSUE SUMMARY**

At last month’s meeting it was approved to look at replacement vehicles up to \$30,000. Our search was unsuccessful after looking at numerous vehicles where we found most had higher mileage with significant frame rusting due to use as snow and salt trucks. We are now moving forward with the alternative recommendation from our last meeting to purchase a new truck and dump bed. We received a check from the insurance company to offset a portion of the cost (\$12,674.75). In reviewing the settlement with our insurance carrier, the settlement was for a fully depreciated vehicle. The City’s policy values “passenger vehicles” for older model years on an actual cash value basis (ACV) - which is cost new less accumulated depreciation. Due to the type of vehicle and its age of the vehicle (2006) at the time of accident the actual cash value (\$12,674) was lower than the cost to replace it with a new vehicle. The city could declare a higher agreed value for certain older vehicles moving forward between ACV and replacement cost. However, the city would pay additional premium based on the higher declared values and risk vs. value needs to be weighed in any decision to change this. Note that newer passenger vehicles, heavy commercial vehicles, and specialized fire/rescue apparatus are valued at replacement cost.

Current policy language permits for a 1% differential allowance for local vendors – defined as dealers in Fond du Lac and Dodge Counties. Actual variance between the two vendors is .28%. Quote specs were sent to three local dealers. We received response from two as follows. Both meet the local dealer preference provision in policy language.

Chassis Vendor	Chassis	Truck Bed	TOTAL
Homan	\$ 46,162.44	\$ 7,966.00	\$ 54,128.44
Holiday	\$ 46,011.00	\$ 7,966.00	\$ 53,977.00
	Differential		\$ 151.44
	% Variance		0.28%

**STAFF RECOMMENDATION:**

Council will revisit the purchasing policy. Proposed policy language focuses on vendor selection based on best overall value for the city. Conversation as such should focus on defining vendor selection based on best overall value and should be included in the recommendation to the Common Council for approval.

**ATTACHMENTS:**

- Homan Auto quote
- Holiday Auto quote
- Madison Truck quote for the bed

**RECCOMENDED MOTION:**

Motion to authorize vehicle purchase from [insert vendor name] and additional equipment from Madison Truck in the amount not to exceed \$54,128.44.



**Homan Auto**  
Eric Homan

Vehicle: [Fleet] 2025 Chevrolet Silverado 3500HD CC (CK31403) 4WD Reg Cab 171" WB, 84.5" CA  
Work Truck





# Homan Auto

Eric Homan

Vehicle: [Fleet] 2025 Chevrolet Silverado 3500HD CC (CK31403) 4WD Reg Cab 171" WB, 84.5" CA Work Truck (✔ Complete)

## Standard Equipment

### Mechanical

Engine, 6.6L V8 with Direct Injection and Variable Valve Timing, gasoline (401 hp [299 kW] @ 5200 rpm, 464 lb-ft of torque [629 N-m] @ 4000 rpm) (STD)

Transmission, Allison 10-Speed automatic (STD)

Rear axle, 3.73 ratio (Requires (L8T) 6.6L V8 gas engine. Not available with (L5P) Duramax 6.6L Turbo-Diesel V8 engine.)

Auto-locking rear differential

Air filter, heavy-duty

Air filtration monitoring

Transfer case, two-speed, electronic shift with push button controls (Requires 4WD models.)

Four wheel drive

Cooling, external engine oil cooler

Cooling, auxiliary external transmission oil cooler

Battery, heavy-duty 720 cold-cranking amps/80 Amp-hr, maintenance-free with rundown protection and retained accessory power (Included and only available with (L8T) 6.6L V8 gas engine.)

Alternator, 170 amps (Requires (L8T) 6.6L V8 gas engine.)

Trailer brake controller, integrated

Recovery hooks, front, frame-mounted, Black

Body, Chassis Cab

Frame, fully-boxed, hydroformed front section and an open "C" rear section

GVWR, 14,000 lbs. (6350 kg)

Suspension Package

Steering, Recirculating Ball with smart flow power steering system

Brakes, 4-wheel antilock, 4-wheel disc with DURALIFE rotors

Fuel tank, front and rear, 63.5 gallon

Capped Fuel Fill

### Exterior

Wheels, 17" (43.2 cm) painted steel (STD)

Tires, LT235/80R17E all-terrain, blackwall (STD)

Spare tire delete Deletes the spare tire and wheel.

Dual Rear Wheels

This document contains information considered Confidential between GM and its Clients uniquely. The information provided is not intended for public disclosure. Prices, specifications, and availability are subject to change without notice, and do not include certain fees, taxes and charges that may be required by law or vary by manufacturer or region. Performance figures are guidelines only, and actual performance may vary. Photos may not represent actual vehicles or exact configurations. Content based on report preparer's input is subject to the accuracy of the input provided.

Data Version: 23120. Data Updated: Aug 5, 2024 6:43:00 PM PDT.



# Homan Auto

Eric Homan

Vehicle: [Fleet] 2025 Chevrolet Silverado 3500HD CC (CK31403) 4WD Reg Cab 171" WB, 84.5" CA Work Truck (✔ Complete)

## Exterior

- Wheel trim, painted center caps
- Bumpers, front, Black
- Bumper, rear, delete
- Moldings, beltline, Black
- Grille (Front grille bar with "CHEVROLET" molded in Black, includes Black mesh inserts with small Gold bowtie emblem.)
- Headlamps, halogen reflector with halogen Daytime Running Lamps
- IntelliBeam, automatic high beam on/off
- Lamps, Smoked Amber roof marker, (LED)
- Lamps, cargo area, cab mounted integrated with center high mount stop lamp with switch in bank on left side of steering wheel
- Mirrors, outside power-adjustable vertical trailing with heated upper glass, lower convex mirrors, integrated turn signals, manual folding/extending (extends 3.31" [84.25mm]) (Standard on Regular Cab models. Included and only available with (PCV) WT Convenience Package or (ZLQ) WT Fleet Convenience Package.)
- Mirror caps, Black
- Glass, solar absorbing, tinted
- Door handles, Black grained

## Entertainment

- Audio system, Chevrolet Infotainment 3 system, 7" diagonal HD color touchscreen, AM/FM stereo Bluetooth audio streaming for 2 active devices, voice command pass-through to phone, Wireless Apple CarPlay and Wireless Android Auto compatibility (STD)
- Audio system feature, 2-speakers (Requires Regular Cab model.)
- Bluetooth for phone, connectivity to vehicle infotainment system
- Wi-Fi Hotspot capable (Terms and limitations apply. See onstar.com or dealer for details.)

## Interior

- Seats, front 40/20/40 split-bench with covered armrest storage and under-seat storage (lockable) (STD)
- Seat adjuster, driver 4-way manual
- Seat adjuster, passenger 4-way manual
- Vinyl seat trim
- Floor covering, rubberized-vinyl
- Steering column, Tilt-Wheel, manual with wheel locking security feature
- Steering wheel, urethane

This document contains information considered Confidential between GM and its Clients uniquely. The information provided is not intended for public disclosure. Prices, specifications, and availability are subject to change without notice, and do not include certain fees, taxes and charges that may be required by law or vary by manufacturer or region. Performance figures are guidelines only, and actual performance may vary. Photos may not represent actual vehicles or exact configurations. Content based on report preparer's input is subject to the accuracy of the input provided.

Data Version: 23120. Data Updated: Aug 5, 2024 6:43:00 PM PDT.





# Homan Auto

Eric Homan

Vehicle: [Fleet] 2025 Chevrolet Silverado 3500HD CC (CK31403) 4WD Reg Cab 171" WB, 84.5" CA Work Truck (✔ Complete)

## Interior

Instrument cluster 6-gauge cluster featuring speedometer, fuel level, engine temperature, tachometer, voltage and oil pressure

Compass, located in instrument cluster

Driver Information Center, 3.5" diagonal monochromatic display

Universal Vehicle Module Includes module, customer interface harness and instructions. Provides vehicle data over an open CAN network (J1939). 10 switchable inputs/outputs and Custom Configuration Tool to integrate upfit equipment controls. Software features that support Auto Vehicle Start, Shutdown Inhibit, Fast Idle and Snow Plow.

Exterior Temperature Display located in radio display

Brake lining wear indicator

Window, power front, drivers express up/down

Window, power front, passenger express down

Door locks, power

Remote Keyless Entry, with 2 transmitters

Cruise control, electronic with set and resume speed, steering wheel-mounted

Power outlet, front auxiliary, 12-volt

USB Ports, 2, Charge/Data ports located on instrument panel

Air conditioning, single-zone

Mirror, inside rearview, manual tilt

Assist handles front A-pillar mounted for driver and passenger

Chevrolet Connected Access capable (Subject to terms. See onstar.com or dealer for details.)

Back-up alarm calibration. This calibration will allow installation of an aftermarket back-up alarm by disabling rear perimeter lighting (Not available with (8S3) Back-up alarm.)

## Safety-Mechanical

StabiliTrak, stability control system with Proactive Roll Avoidance and traction control, includes electronic trailer sway control and hill start assist

Automatic Emergency Braking

Front Pedestrian Braking

## Safety-Exterior

Daytime Running Lamps with automatic exterior lamp control

This document contains information considered Confidential between GM and its Clients uniquely. The information provided is not intended for public disclosure. Prices, specifications, and availability are subject to change without notice, and do not include certain fees, taxes and charges that may be required by law or vary by manufacturer or region. Performance figures are guidelines only, and actual performance may vary. Photos may not represent actual vehicles or exact configurations. Content based on report preparer's input is subject to the accuracy of the input provided.

Data Version: 23120. Data Updated: Aug 5, 2024 6:43:00 PM PDT.



# Homan Auto

Eric Homan

Vehicle: [Fleet] 2025 Chevrolet Silverado 3500HD CC (CK31403) 4WD Reg Cab 171" WB, 84.5" CA  
Work Truck (✔ Complete)

## Safety-Interior

Airbags Dual-stage frontal airbags for driver and front outboard passenger; Seat-mounted side impact airbags for driver and front outboard passenger; Head-curtain airbags for front and rear outboard seating positions; Includes front outboard Passenger Sensing System for frontal outboard passenger airbag (Always use seat belts and child restraints. Children are safer when properly secured in a rear seat in the appropriate child restraint. See the Owner's Manual for more information.)

Following Distance Indicator

Forward Collision Alert

Tire Pressure Monitoring System with Tire Fill Alert (does not apply to spare tire)

Teen Driver a configurable feature that lets you activate customizable vehicle settings associated with a key fob, to help encourage safe driving behavior. It can limit certain available vehicle features, and it prevents certain safety systems from being turned off. An in-vehicle report card gives you information on driving habits and helps you to continue to coach your new driver

Buckle to Drive prevents vehicle from being shifted out of Park until driver seat belt is fastened; times out after 20 seconds and encourages seat belt use

OnStar Services capable (See onstar.com for details and limitations. Services vary by model. Service plan required.)

OnStar One Essentials (OnStar One Business Essentials for Fleet) Drive confidently with core OnStar services including select mobile app commands, built-in voice assistance, real-time traffic and navigation, and Automatic Crash Response to help if you're in need. (OnStar One Essentials includes select remote commands, Navigation, Voice Assistance, and Automatic Crash Response, for eligible vehicles with compatible software. Fleet customers get select remote commands through OnStar Vehicle Insights. For MY25 vehicles, OnStar One Essentials is standard for 8 years; services may require an OnStar paid plan to continue thereafter. See OnStar.com for service descriptions and terms.)

## WARRANTY

Warranty Note: <<< Preliminary 2025 Warranty >>>

Basic Years: 3

Basic Miles/km: 36,000

Drivetrain Years: 5

Drivetrain Miles/km: 60,000

Drivetrain Note: 3.0L & 6.0L Duramax® Turbo-Diesel engines, and certain commercial, government, and qualified fleet vehicles: 5 years/100,000 miles

Corrosion Years (Rust-Through): 6

Corrosion Years: 3

Corrosion Miles/km (Rust-Through): 100,000

Corrosion Miles/km: 36,000

Roadside Assistance Years: 5

Roadside Assistance Miles/km: 60,000

Roadside Assistance Note: 3.0L & 6.0L Duramax® Turbo-Diesel engines, and certain commercial, government, and qualified fleet vehicles: 5 years/100,000 miles

Maintenance Note: First Visit: 12 Months/12,000 Miles

## Selected Model and Options

This document contains information considered Confidential between GM and its Clients uniquely. The information provided is not intended for public disclosure. Prices, specifications, and availability are subject to change without notice, and do not include certain fees, taxes and charges that may be required by law or vary by manufacturer or region. Performance figures are guidelines only, and actual performance may vary. Photos may not represent actual vehicles or exact configurations. Content based on report preparer's input is subject to the accuracy of the input provided.

Data Version: 23120. Data Updated: Aug 5, 2024 6:43:00 PM PDT.



# Homan Auto

Eric Homan

Vehicle: [Fleet] 2025 Chevrolet Silverado 3500HD CC (CK31403) 4WD Reg Cab 171" WB, 84.5" CA Work Truck (✔ Complete)

## MODEL

CODE	MODEL	MSRP
CK31403	2025 Chevrolet Silverado 3500HD CC 4WD Reg Cab 171" WB, 84.5" CA Work Truck	\$48,700.00

## COLORS

CODE	DESCRIPTION
GXP	Lakeshore Blue Metallic

## EMISSIONS

CODE	DESCRIPTION	MSRP
FE9	Emissions, Federal requirements	\$0.00

## ENGINE

CODE	DESCRIPTION	MSRP
L8T	Engine, 6.6L V8 with Direct Injection and Variable Valve Timing, gasoline (401 hp [299 kW] @ 5200 rpm, 464 lb-ft of torque [629 N-m] @ 4000 rpm) (STD)	\$0.00

## TRANSMISSION

CODE	DESCRIPTION	MSRP
MKM	Transmission, Allison 10-Speed automatic (STD)	\$0.00

## AXLE

CODE	DESCRIPTION	MSRP
GT4	Rear axle, 3.73 ratio (Requires (L8T) 6.6L V8 gas engine. Not available with (L5P) Duramax 6.6L Turbo-Diesel V8 engine.)	\$0.00

## PREFERRED EQUIPMENT GROUP

CODE	DESCRIPTION	MSRP
1WT	Work Truck Preferred Equipment Group includes standard equipment	\$0.00

## WHEELS

CODE	DESCRIPTION	MSRP
PYW	Wheels, 17" (43.2 cm) painted steel (STD)	\$0.00

This document contains information considered Confidential between GM and its Clients uniquely. The information provided is not intended for public disclosure. Prices, specifications, and availability are subject to change without notice, and do not include certain fees, taxes and charges that may be required by law or vary by manufacturer or region. Performance figures are guidelines only, and actual performance may vary. Photos may not represent actual vehicles or exact configurations. Content based on report preparer's input is subject to the accuracy of the input provided.

Data Version: 23120. Data Updated: Aug 5, 2024 6:43:00 PM PDT.



# Homan Auto

Eric Homan

Vehicle: [Fleet] 2025 Chevrolet Silverado 3500HD CC (CK31403) 4WD Reg Cab 171" WB, 84.5" CA Work Truck (✔ Complete)

### TIRES

CODE	DESCRIPTION	MSRP
QZT	Tires, LT235/80R17E all-terrain, blackwall (STD)	\$0.00

### SPARE TIRE

CODE	DESCRIPTION	MSRP
9L3	Spare tire delete	\$0.00

### PAINT

CODE	DESCRIPTION	MSRP
GXP	Lakeshore Blue Metallic	\$0.00

### SEAT TYPE

CODE	DESCRIPTION	MSRP
AZ3	Seats, front 40/20/40 split-bench with covered armrest storage and under-seat storage (lockable) (STD)	\$0.00

### SEAT TRIM

CODE	DESCRIPTION	MSRP
H2G	Jet Black, Vinyl seat trim	\$0.00

### RADIO

CODE	DESCRIPTION	MSRP
IOR	Audio system, Chevrolet Infotainment 3 system, 7" diagonal HD color touchscreen, AM/FM stereo Bluetooth audio streaming for 2 active devices, voice command pass-through to phone, Wireless Apple CarPlay and Wireless Android Auto compatibility (STD)	\$0.00

### ADDITIONAL EQUIPMENT - PACKAGE

CODE	DESCRIPTION	MSRP
VYU	Snow Plow Prep Package includes (KW5) 220-amp alternator, includes increased front GAWR on Heavy Duty models, (NZZ) skid plates (transfer case and oil pan), pass through dash grommet hole and roof emergency light provisions. Contact GM Upfitter Integration at <a href="http://www.gmupfitter.com">www.gmupfitter.com</a> for plow installation details and assistance (Requires 4WD model. Upgradeable to (KHF) Dual alternators (220-amp primary, 170-amp auxiliary). Not available with (F60) Heavy Duty Front Spring Package.)	\$300.00

This document contains information considered Confidential between GM and its Clients uniquely. The information provided is not intended for public disclosure. Prices, specifications, and availability are subject to change without notice, and do not include certain fees, taxes and charges that may be required by law or vary by manufacturer or region. Performance figures are guidelines only, and actual performance may vary. Photos may not represent actual vehicles or exact configurations. Content based on report preparer's input is subject to the accuracy of the input provided.

Data Version: 23120. Data Updated: Aug 5, 2024 6:43:00 PM PDT.



# Homan Auto

Eric Homan

Vehicle: [Fleet] 2025 Chevrolet Silverado 3500HD CC (CK31403) 4WD Reg Cab 171" WB, 84.5" CA Work Truck (✔ Complete)

### ADDITIONAL EQUIPMENT - MECHANICAL

CODE	DESCRIPTION	MSRP
KW5	Alternator, 220 amps (Included with (L5P) Duramax 6.6L Turbo-Diesel V8 engine or (VYU) Snow Plow Prep Package. Free flow on (L8T) 6.6L V8 gas engine.)	Inc.
NZZ	Skid Plates protect the oil pan, front axle and transfer case (Included with (VYU) Snow Plow Prep Package.)	Inc.

### ADDITIONAL EQUIPMENT - INTERIOR

CODE	DESCRIPTION	MSRP
9L7	Upfitter switch kit, (5) Provides 3-30 amp and 2-20 amp configurable circuits to facilitate installation of aftermarket electrical accessories. Kit with all required parts will be shipped loose with the truck for installation by the dealer or upfitter at customer expense. Installation instructions and technical assistance available at <a href="http://www.gmupfitter.com">www.gmupfitter.com</a> .	\$150.00
C49	Defogger, rear-window electric (Included with (PCV) WT Convenience Package.)	\$225.00

### ADDITIONAL EQUIPMENT - SAFETY-INTERIOR

CODE	DESCRIPTION	MSRP
5N5	Rear Camera Kit. Kit includes camera, fixed position bracket & 19 ft cable with attachment clips. Rear camera radio calibration provided from the factory. See Upfitter Integration Bulletin for installation instructions at <a href="http://www.gmupfitter.com">www.gmupfitter.com</a>	\$73.00
<b>Options Total</b>		<b>\$748.00</b>

This document contains information considered Confidential between GM and its Clients uniquely. The information provided is not intended for public disclosure. Prices, specifications, and availability are subject to change without notice, and do not include certain fees, taxes and charges that may be required by law or vary by manufacturer or region. Performance figures are guidelines only, and actual performance may vary. Photos may not represent actual vehicles or exact configurations. Content based on report preparer's input is subject to the accuracy of the input provided.

Data Version: 23120. Data Updated: Aug 5, 2024 6:43:00 PM PDT.



# Homan Auto

Eric Homan

Vehicle: [Fleet] 2025 Chevrolet Silverado 3500HD CC (CK31403) 4WD Reg Cab 171" WB, 84.5" CA Work Truck (✔ Complete)

## Window Sticker

### SUMMARY

[Fleet] 2025 Chevrolet Silverado 3500HD CC (CK31403) 4WD Reg Cab 171" WB, 84.5" CA Work Truck MSRP:\$48,700.00

Interior:Jet Black, Vinyl seat trim

Exterior 1:Lakeshore Blue Metallic

Exterior 2:No color has been selected.

Engine, 6.6L V8 with Direct Injection and Variable Valve Timing, gasoline

Transmission, Allison 10-Speed automatic

### OPTIONS

CODE	MODEL	MSRP
CK31403	[Fleet] 2025 Chevrolet Silverado 3500HD CC (CK31403) 4WD Reg Cab 171" WB, 84.5" CA Work Truck	\$48,700.00
<b>OPTIONS</b>		
1WT	Work Truck Preferred Equipment Group	\$0.00
5N5	Rear Camera Kit.	\$73.00
9L3	Spare tire delete	\$0.00
9L7	Upfitter switch kit, (5)	\$150.00
AZ3	Seats, front 40/20/40 split-bench	\$0.00
C49	Defogger, rear-window electric	\$225.00
FE9	Emissions, Federal requirements	\$0.00
GT4	Rear axle, 3.73 ratio	\$0.00
GXP	Lakeshore Blue Metallic	\$0.00
H2G	Jet Black, Vinyl seat trim	\$0.00
IOR	Audio system, Chevrolet Infotainment 3 system, 7" diagonal HD color touchscreen, AM/FM stereo	\$0.00
KW5	Alternator, 220 amps	Inc.
L8T	Engine, 6.6L V8 with Direct Injection and Variable Valve Timing, gasoline	\$0.00
MKM	Transmission, Allison 10-Speed automatic	\$0.00
NZZ	Skid Plates	Inc.
PYW	Wheels, 17" (43.2 cm) painted steel	\$0.00

This document contains information considered Confidential between GM and its Clients uniquely. The information provided is not intended for public disclosure. Prices, specifications, and availability are subject to change without notice, and do not include certain fees, taxes and charges that may be required by law or vary by manufacturer or region. Performance figures are guidelines only, and actual performance may vary. Photos may not represent actual vehicles or exact configurations. Content based on report preparer's input is subject to the accuracy of the input provided.

Data Version: 23120. Data Updated: Aug 5, 2024 6:43:00 PM PDT.



# Homan Auto

Eric Homan

Vehicle: [Fleet] 2025 Chevrolet Silverado 3500HD CC (CK31403) 4WD Reg Cab 171" WB, 84.5" CA Work Truck (✔ Complete)

QZT	Tires, LT235/80R17E all-terrain, blackwall	\$0.00
VYU	Snow Plow Prep Package	\$300.00
<b>SUBTOTAL</b>		<b>\$49,448.00</b>
	Adjustments Total	\$0.00
	Destination Charge	\$1,995.00
<b>TOTAL PRICE</b>		<b>\$51,443.00</b>

## FUEL ECONOMY

Est City:N/A

Est Highway:N/A

Est Highway Cruising Range:N/A

This document contains information considered Confidential between GM and its Clients uniquely. The information provided is not intended for public disclosure. Prices, specifications, and availability are subject to change without notice, and do not include certain fees, taxes and charges that may be required by law or vary by manufacturer or region. Performance figures are guidelines only, and actual performance may vary. Photos may not represent actual vehicles or exact configurations. Content based on report preparer's input is subject to the accuracy of the input provided.

Data Version: 23120. Data Updated: Aug 5, 2024 6:43:00 PM PDT.



# Homan Auto

Eric Homan

Vehicle: [Fleet] 2025 Chevrolet Silverado 3500HD CC (CK31403) 4WD Reg Cab 171" WB, 84.5" CA  
Work Truck (✔ Complete)

## Quote Worksheet

	<b>MSRP</b>
Base Price	\$48,700.00
Dest Charge	\$1,995.00
Total Options	\$748.00
<b>Subtotal</b>	<b>\$51,443.00</b>
<b>Subtotal Pre-Tax Adjustments</b>	<b>\$0.00</b>
Less Customer Discount	(\$3,080.56)
<b>Subtotal Discount</b>	<b>(\$3,080.56)</b>
Trade-In	\$0.00
<b>Subtotal Trade-In</b>	<b>\$0.00</b>
<b>Taxable Price</b>	<b>\$48,362.44</b>
Sales Tax	\$0.00
<b>Subtotal Taxes</b>	<b>\$0.00</b>
Fleet Discount	(\$2,200.00)
<b>Subtotal Post-Tax Adjustments</b>	<b>(\$2,200.00)</b>
<b>Total Sales Price</b>	<b>\$46,162.44</b>

Dealer Signature / Date

Customer Signature / Date

This document contains information considered Confidential between GM and its Clients uniquely. The information provided is not intended for public disclosure. Prices, specifications, and availability are subject to change without notice, and do not include certain fees, taxes and charges that may be required by law or vary by manufacturer or region. Performance figures are guidelines only, and actual performance may vary. Photos may not represent actual vehicles or exact configurations. Content based on report preparer's input is subject to the accuracy of the input provided.

Data Version: 23120. Data Updated: Aug 5, 2024 6:43:00 PM PDT.





# Order Workbench

Order Details - Order #DRSRCG

*Holiday Automotive*

Displayed: 8/5/24 at 02:42:14 PM EDT

Printed By: whealon, Tim

*WAPUN*

## BAC Information

Contact Name	Contact Phone
DAN	Stock No.

*FAN # 815904*      *Wayward*

## Model/Order Information

Model Year	2025	VIN		MSRP W/DFC	\$51,870.00
Division	CHEVROLET	Request ID	DRSRCG		
Distribution Entity	FLT				
Order Type	FNR - Fleet Commercial				
Allocation Group	CHDREG				
Model	✓ CK31403 - 3500HD Silverado: Reg Chassis-Cab, 4WD				
TPW					
Requested TPW	8/26/24				

*Price 45,638.00 + TTL*  
*SNOW = low prep + 300.00*  
*CAMERA + 73.00*  


---

*46,011.00 + TTL*

## Vehicle Specifications

PEG	IWT - Work Truck Preferred Equipment Group	Trim	H2G - IWT-Vinyl, Jet Black, Interior Trim	Transmission	MKM - 10-Speed Automatic
Color	✓ GXP - Lakeshore Blue Metallic	Engine	L8T - Engine: 6.6L, V-8, SIDI	Emissions	FE9 - Federal Emissions

### Ordered Options

- |       |  |       |   |
|-------|--|-------|---|
| 1WT   | Work Truck Preferred Equipment Group                     | KW7   | Alternator, 170 AMP                                     |
| 9J4   | Bumper: Rear Delete                                      | L8T   | Engine: 6.6L, V-8, SIDI                                 |
| ✓ 9L7 | Upfitter / Accessory Electrical Switches                 | MKM   | 10-Speed Automatic                                      |
| AKO   | Glass, Deep Tinted                                       | N2N   | Fuel Tank, Dual Front and Rear, 63.5 Gallon Total       |
| AQQ   | Keyless Remote Entry                                     | NQF   | Transfer Case: w/ Rotary Dial Control, Electronic Shift |
| AZ3   | Seats: Front 40/20/40 Split-Bench, Full Feature          | ✓ NZZ | Skid Plate  |
| BG9   | Floor Covering: Rubberized Vinyl, Black                  | P03   | Painted Wheel Trim Skins, Painted Center Caps           |
| C49   | Defogger, Rear Window, Electric                          | ✓ PCV | IWT Convenience 1 Package                               |
| DD8   | ISRV Mirror, Electro-chromatic                           | PYW   | Wheels: 17" Steel, Painted--Dual Rear Wheels            |
| ✓ DWI | Mirrors, O/S: Pwr Fold., Man. Ext., Heat, Turn Indicator | QZT   | Tires: LT235/80 R17 All Terrain, Blackwall              |

FE9 Federal Emissions  
 G80 Auto Locking Differential, Rear  
 G9Y GVW Rating 14,000 Lbs. Dual Rear Wheels  
 GT4 Rear Axle: 3.73 Ratio  
 GXP Lakeshore Blue Metallic  
 H2G 1WT-Vinyl, Jet Black, Interior Trim  
 IOR Chevrolet Infotainment, 7" Color Screen  
 JL1 Integrated Trailer Brake Controller  
 K34 Cruise Control  
 K47 Heavy Duty Air Filter  
 KC4 Cooler, Engine Oil  
 KGU Universal Vehicle Module  
 KNP Transmission Cooling System

SFW Back-Up Alarm Calibration (SEO)  
 TQ5 Headlamps, IntelliBeam  
 U01 Roof Marker Lamps  
 UE1 OnStar Communication System  
 UE4 Following Distance Indicator  
 UEU Sensor, Forward Collision Alert  
 UHY Automatic Emergency Braking  
 UKJ Sensor, Front Pedestrian Braking  
 V76 Recovery Hooks  
 VK3 Front License Plate Mounting Provisions  
 VQ2 Holdback N/A, Dealer Fleet Assistance  
 ZW9 Delete: Pick-Up Box

### Fleet Information

Email	City	Country
Daytime Phone	Zip/Postal Code	
Address	Province/State/Territory	

### Event History

Event Code	Event Description	Effective Date	Timestamp	End Date	System	User ID
1000	Order Request Accepted by GM	08/05/2024	08/05/2024 02:41:40.741 PM		NAOWB	twhealon1234
1001	Order Request Added	08/05/2024	08/05/2024 02:41:40.741 PM		NAOWB	twhealon1234

### Change History

Effective Date	Timestamp	Data Element	Before Value	After Value	User ID
----------------	-----------	--------------	--------------	-------------	---------

No data found.



A Complete Line  
Of  
Truck Equipment

2410 S. Stoughton Road  
Madison, WI 53716-2898

**Telephone (608) 222-5591**  
Wisconsin (800) 259-7453  
FAX (608) 222-3644

To: **City Of Waupun**  
Address: 201 E. Main ST.  
City: Waupun, WI  
Attention: **Jeff Daane**  
Telephone #: 920-324-7918 office  
Fax #: 920-324-7939

Date: 07/10/24  
Delivery:  
Dealer:  
P. O. #:  
Shop 324-7936 Terms: **NET ON DELIVERY, unless specified**  
920-324-7935 shop

Quantity	QUOTE GOOD FOR 30 DAYS		PRICE EACH
<b>One</b>	<b>Knapheide PVMX- 11' 5" X 96" Platform Body with</b> 5" structural steel longrails 3" steel "self-cleaning" crossmembers on <b>12" centers</b> 2" nominal dense yellow pine floor, CCA treated, tongue in groove 12 gauge high strength steel side & end rails with 2" X 4" stake pockets FMVSS clearance lights mounted in rubber grommets Electrodeposition primer, complete Immersion (Dipping), finish painted black <b>10 Gauge Steel Floor Overlay</b>		
<b>One</b>	<b>Crysteel LB 516 SA electric/hydraulic hoist</b> with push button controls  Not Installed  FOB Madison, WI		
	TOTAL		\$7,966.00
<b>Note</b>	<b>Crysteel LB516 Replaces Crysteel LB 510</b>		
The quoted price includes ONLY what is described above. It is your responsibility to review the specifications.			
<b>Chassis Make</b>	CA: 84"	Trans:	Subtotal
Customer Signature and Date	Salesman		Tax 5.5%
	<b>Kurt Schadewalt</b>		F.E.T. 12%
			<b>TOTAL</b>



# AGENDA SUMMARY SHEET

**MEETING DATE:** 8/19/24

**TITLE:** Approve Rebid for City Hall Reroof of Existing Ballasted Roofs with EPDM Adhered Roof System (Roof Areas: East, West and North, 201 E Main Street)

**AGENDA SECTION:** RECOMMENDATION BOARDS & COMMISSIONS

**PRESENTER:** Jeff Daane, Director of Public Works

DEPARMTENT GOAL(S) SUPPORTED <i>(if applicable)</i>	FISCAL IMPACT	
Sustainability	\$103,860	

**ISSUE SUMMARY**

The City opened bids (rebid after initial rejection earlier this year) for the City Hall roof project on August 6<sup>th</sup> 2024. We received two bids, both lower than the bids received first round and more in alignment though still over budgeted amounts. The rebid is roughly \$10,000 with potential of more savings if insulation is found in good shape during the project. The variance from budgeted amount to award amount will be covered by fund balance.

**STAFF RECCOMENDATION:**

Approve M. W. Tighe Roofing Inc. as the lowest responsible bidder

**ATTACHMENTS:**

Bid Tab

**RECOMMENDED MOTION:**

Motion to approve bid from MW Tighe Roofing, Inc. in the amount of \$103,860 to reroof the existing ballasted roof with an EPDM Adhered roof system on the east, west and north sections of Waupun City Hall, 201 E Main Street, as presented.

CITY OF WAUPUN  
Waupun, Wisconsin

**DEPARTMENT OF PUBLIC WORKS**

**BID TAB**

**August 6, 2024**

**REBID - City Hall - Reroof Existing Ballasted Roofs with EPDM Adhered Roof System  
(Roof Areas: East, West and North)**

**201 E Main St**

	M.W. Tighe Roofing Inc. 183 W . McWilliams Street Fond Du Lac WI 54935	Security Luebke Roofing Inc. 3921 E Endeavour Dr Appleton WI 54915
TOTAL BID SUBMITTED:	\$ 103,860.00	\$108,298.00



**AGENDA SUMMARY SHEET**

**MEETING DATE:** 8/19/24

**TITLE:** Public Emergency Declaration City Garage Roof Damaged during Hailstorm

**AGENDA SECTION:** RECOMMENDATION  
BOARDS & COMMISSIONS

**PRESENTER:** Jeff Daane, Director of Public Works

DEPARMTENT GOAL(S) SUPPORTED <i>(if applicable)</i>	FISCAL IMPACT	
Public Infrastructure	--	

**ISSUE SUMMARY**

On May 20<sup>th</sup> a hailstorm came through Waupun and widespread damage was found across the community. Staff worked with a roofing company to check roofs on all city buildings. With the number of roofs damaged in the area this has taken some time. Last month we started noticing water leaking into the Public Works Garage. After inspection by a roofing contractor, hail damage was identified. Staff alerted our insurance carrier and on July 17<sup>th</sup> an adjuster inspected the roof. Because of the size and value of the roof, that individual escalated the claim to a large claim, which required a different adjuster assessed the condition. On Friday July 26<sup>th</sup> a second adjuster evaluated the roof and declared the roof a complete loss in need of replacement. To understand the seriousness of the leaking, our roofer pulled several cores to determine how widespread the damage was. The samples pulled all showed moisture, indicating extensive damage over most of the roof, which continues to leak. The DPW Garage houses all maintenance and DPW operations for the city and is deemed an essential facility for that reason. WI Statute 62.15 (1b) permits the Board of Public Works and Common Council to declare an emergency when public interest is threatened. This must be done by resolution, which permits staff to order immediate repairs to the structure by foregoing the public bidding process. An emergency resolution is provided for consideration. If we adhere to the public bidding process, it would delay replacement most likely until next spring due to the time to complete that process. This would result in further damage to the building and possibly its contents and is not advised due to the condition of the roof.

**STAFF RECOMMENDATION:**

Approve emergency declaration permitting staff to immediately repair the roof of the DPW Garage

**ATTACHMENTS:**

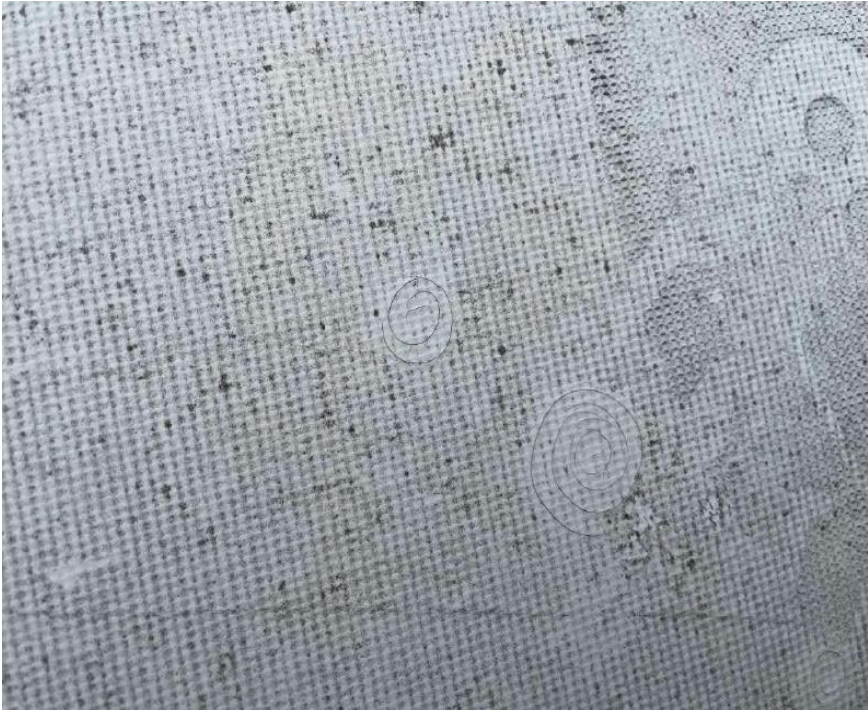
- Pictures of Roof
- Estimate from Insurance on Replacement Costs

**RECOMMENDED MOTION:**

Motion to approve the resolution for a Public Emergency Declaration for the City Garage Roof Damaged during the May 2024 Hailstorm as presented.



TPO roof



TPO Damage





Additional photo of spiral fractures





Possible hail damage to vent stack



Rubber Roof No damage



Manmade and old damage to downspout



Metal Roof



Possible hail hit to metal roof. Dirt /debris on roof. No damage

RESOLUTION # \_\_\_\_\_

**A RESOLUTION DECLARING AN EMERGENCY TO  
DEPARTMENT OF PUBLIC WORKS FACILITY ROOF**

THIS RESOLUTION is made by the Board of Public Works of the City of Waupun;

**FINDINGS AND DETERMINATION:**

WHEREAS, significant hail damage was identified to the roof of the City of Waupun Public Works Garage, located at 903 N Madison St, resulting in widespread damage that has caused water infiltration and leaks across a majority of the roof, which if not repaired immediately, may lead to further structural issues with the facility that could endanger public welfare,

NOW THEREFORE BE IT RESOLVED THAT the Board of Public Works declares an emergency under WI Statute 62.15 at the Public Works Garage for the purpose of expediting roof repair on this critical facility and that the emergency should remain in place until needed repairs are complete.

Dated this 19<sup>th</sup> day of August, 2024.

---

Mike Matoushek, Jr.  
Chairman, Board of Public Works

ATTEST:

---

Angela Hull  
City Clerk





## AGENDA SUMMARY SHEET

**MEETING DATE:** 8/19/24

**TITLE:** Approve Public Works Garage Emergency Roof Replacement Bid

**AGENDA SECTION:** RECOMMENDATION  
BOARDS & COMMISSIONS

**PRESENTER:** Jeff Daane, Director of Public Works

---

DEPARTMENT GOAL(S) SUPPORTED <i>(if applicable)</i>	FISCAL IMPACT	
Public Infrastructure	\$29,313.14 (after insurance settlement)	

---

### ISSUE SUMMARY

The City Garage roof was damaged during the May 20, 2024 hail storm. The roof is leaking and needs to be replaced. A copy of our insurance settlement is included in the packet. We are recommending that the council pass an emergency resolution to authorize immediate repair of the facility, which permits us to forgo the public construction bidding process required under WI Statute 62.15. The attached estimate includes an option for new gutters. The old gutters had fallen off a portion of the building due to not having proper blocking installed during the last roof project. Staff is recommending that gutter replacement be included in this project to protect the building. The City would be responsible for the full deductible amount of \$10,000, plus the cost of gutters as outlined. Under this action, materials would be ordered immediately and roof replacement can be expected yet this fall, preventing further damage that could occur from leaking/freeze/thaw over the winter.

### STAFF RECOMMENDATION:

Approve emergency roof replacement bid as presented

### ATTACHMENTS:

Insurance Claim Settlement  
Project estimate  
Pictures

### **RECOMMENDED MOTION:**

Motion to recommend to the Common Council approval of the Emergency Roof Repair and Gutter Replacement Bid for Waupun Public Works Garage as presented.

PO Box 7264  
London, KY 40742  
Fax: 877-233-0917

Insured: City Of Waupun  
Property: 903 N MADISON ST  
WAUPUN TS, WI 53963  
Business: 201 E Main St  
Waupun, WI 53963-2019  
Home: 903 N MADISON ST  
WAUPUN TS, WI 53963

E-mail: jeff@cityofwaupunwi.gov

Claim Rep.: David Clark

E-mail: david.clark@selective.com

Estimator: David Clark

E-mail: david.clark@selective.com

**Claim Number:** 22646177

**Policy Number:** S 2198633

**Type of Loss:** Hail

Date Contacted: 7/22/2024 12:09 PM

Date of Loss: 5/20/2024 12:00 AM

Date Received: 7/11/2024 12:00 AM

Date Inspected: 7/26/2024 12:09 PM

Date Entered: 7/18/2024 10:48 AM

Date Est. Completed: 7/22/2024 12:10 PM

Price List: WIMA8X\_JUL24  
Restoration/Service/Remodel

Estimate: CITY\_OF\_WAUPUN1

**Important! Please Read First:**

This estimate is prepared using prevailing prices of building materials and labor in your area. The decision to use and the choice of any particular contractor is entirely insured's privilege and ultimate responsibility. If the contractor you choose thinks he or she is unable to complete the specified repairs for the amount allowed in our estimate, please have your contractor contact your adjuster immediately. Any request for supplemental funds must be made prior to the supplemental work being performed, or such requests cannot be honored.



PO Box 7264  
London, KY 40742  
Fax: 877-233-0917

**CITY\_OF\_WAUPUNI**

**Source - HOVER Roof**

**Exterior**

DESCRIPTION	QUANTITY	UNIT PRICE	TAX	RCV	DEPREC.	ACV
Roofing						
Damage to TPO Roof.						
2. R&R Single-ply membrane - Mechanically attached - 45 mil	197.41 SQ	515.48	1,464.68	103,225.59	(20,068.06)	83,157.53
3. R&R Pipe jack flashing - PVC/TPO	23.00 EA	82.40	50.02	1,945.22	(685.32)	1,259.90
1. R&R Exhaust cap - through roof - 6" to 8"	2.00 EA	140.51	5.66	286.68	(46.54)	240.14
4. R&R Curb flashing - PVC/TPO	645.58 LF	22.50	346.19	14,871.74	(4,743.28)	10,128.46
7. Remove Additional charge for high roof (2 stories or greater)	197.41 SQ	7.01	0.00	1,383.84	(0.00)	1,383.84
8. Additional charge for high roof (2 stories or greater)	197.41 SQ	29.81	0.00	5,884.79	(0.00)	5,884.79
14. Detach & Reset Gutter / downspout - aluminum - up to 5"	480.00 LF	7.09	0.00	3,403.20	(0.00)	3,403.20
Remove and Reset for roofing work						
General Conditions						
12. Temporary toilet (per month)	1.00 MO	170.00	0.00	170.00	(0.00)	170.00
10. Commercial Supervision / Project Management - per hour	60.00 HR	85.18	0.00	5,110.80	(0.00)	5,110.80
3 weeks--Managing roofers, Safety, cleaning area around land/ground.						
9. Dumpster load - Approx. 30 yards, 5-7 tons of debris	4.00 EA	830.00	0.00	3,320.00	(0.00)	3,320.00
13. Crane and operator - 14 ton capacity - 65' extension boom	20.00 HR	188.00	0.00	3,760.00	(0.00)	3,760.00
11. Taxes, insurance, permits & fees (Bid Item)	1.00 EA	0.00	0.00	0.00	(0.00)	0.00
<b>Totals: Roof1</b>			<b>1,866.55</b>	<b>143,361.86</b>	<b>25,543.20</b>	<b>117,818.66</b>
<b>Total: Exterior</b>			<b>1,866.55</b>	<b>143,361.86</b>	<b>25,543.20</b>	<b>117,818.66</b>
<b>Total: Source - HOVER Roof</b>			<b>1,866.55</b>	<b>143,361.86</b>	<b>25,543.20</b>	<b>117,818.66</b>
<b>Line Item Totals: CITY_OF_WAUPUNI</b>			<b>1,866.55</b>	<b>143,361.86</b>	<b>25,543.20</b>	<b>117,818.66</b>

PO Box 7264  
London, KY 40742  
Fax: 877-233-0917

**Grand Total Areas:**

0.00 SF Walls	0.00 SF Ceiling	0.00 SF Walls and Ceiling
0.00 SF Floor	0.00 SY Flooring	0.00 LF Floor Perimeter
0.00 SF Long Wall	0.00 SF Short Wall	0.00 LF Ceil. Perimeter
0.00 Floor Area	0.00 Total Area	0.00 Interior Wall Area
0.00 Exterior Wall Area	0.00 Exterior Perimeter of Walls	
19,740.98 Surface Area	197.41 Number of Squares	645.58 Total Perimeter Length
240.81 Total Ridge Length	0.00 Total Hip Length	

PO Box 7264  
London, KY 40742  
Fax: 877-233-0917

**Summary for Dwelling**

Line Item Total	141,495.31
Material Sales Tax	1,866.55
<b>Replacement Cost Value</b>	<b>\$143,361.86</b>
Less Depreciation	(25,543.20)
<b>Actual Cash Value</b>	<b>\$117,818.66</b>
Less Deductible	(10,000.00)
<b>Net Claim</b>	<b>\$107,818.66</b>
Total Recoverable Depreciation	25,543.20
<b>Net Claim if Depreciation is Recovered</b>	<b>\$133,361.86</b>

\_\_\_\_\_  
David Clark

PO Box 7264  
London, KY 40742  
Fax: 877-233-0917

**Recap of Taxes**

	<b>Material Sales Tax (5.5%)</b>	<b>Services Mat'l Tax (5.5%)</b>	<b>Service Sales Tax (5.5%)</b>	<b>Manuf. Home Tax (5.5%)</b>	<b>Storage Tax (5.5%)</b>
<b>Line Items</b>	1,866.55	0.00	0.00	0.00	0.00
<b>Total</b>	<b>1,866.55</b>	<b>0.00</b>	<b>0.00</b>	<b>0.00</b>	<b>0.00</b>

PO Box 7264  
London, KY 40742  
Fax: 877-233-0917

**Recap by Room**

**Estimate: CITY\_OF\_WAUPUN1**

**Area: Source - HOVER Roof**

**Area: Exterior  
Roof1**

**141,495.31 100.00%**

**Area Subtotal: Exterior**

**141,495.31 100.00%**

**Area Subtotal: Source - HOVER Roof**

**141,495.31 100.00%**

**Subtotal of Areas**

**141,495.31 100.00%**

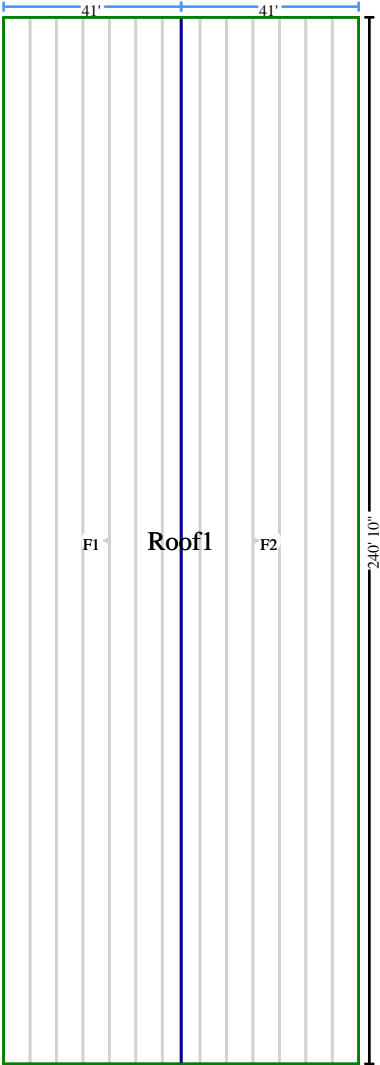
**Total**

**141,495.31 100.00%**

PO Box 7264  
London, KY 40742  
Fax: 877-233-0917

**Recap by Category with Depreciation**

<b>Items</b>	<b>RCV</b>	<b>Deprec.</b>	<b>ACV</b>
<b>GENERAL DEMOLITION</b>	<b>26,521.29</b>		<b>26,521.29</b>
<b>HEAVY EQUIPMENT</b>	<b>3,760.00</b>		<b>3,760.00</b>
<b>LABOR ONLY</b>	<b>5,110.80</b>		<b>5,110.80</b>
<b>ROOFING</b>	<b>102,530.02</b>	<b>24,211.56</b>	<b>78,318.46</b>
<b>SOFFIT, FASCIA, &amp; GUTTER</b>	<b>3,403.20</b>		<b>3,403.20</b>
<b>TEMPORARY REPAIRS</b>	<b>170.00</b>		<b>170.00</b>
<b>Subtotal</b>	<b>141,495.31</b>	<b>24,211.56</b>	<b>117,283.75</b>
<b>Material Sales Tax</b>	<b>1,866.55</b>	<b>1,331.64</b>	<b>534.91</b>
<b>Total</b>	<b>143,361.86</b>	<b>25,543.20</b>	<b>117,818.66</b>



Exterior



**M. W. TIGHE ROOFING, INC.**

183 McWilliams • Fond du Lac, Wisconsin 54935  
(920) 923-2603 • FAX: (920) 923-2343

August 14, 2024

City of Waupun  
Attn: Jeff Daane

**Project: City Garage North Building – Re-Roof  
Hail Damaged Roof 19,800 SF**

Dear Jeff:

Please consider the following scope of work and pricing for the above referred project:

**Scope of Work:**

<u>Item #</u>	<u>Description</u>
1.	Remove existing roof membrane and EPS insulations.
2.	Install EPS filler strips 1# density in low ribs of metal roof. Overlay EPS with one layer of 1.5” ISO insulation Total R-Value 13.81.
3.	Install wood blocking at the perimeter to match height of new roof insulation.
4.	Install a 60 mil TPO Mechanically Attached Roof System (Versico or equal).
5.	Install 24 ga pre-finished perimeter metal.
6.	Furnish Manufacturer’s 15 Year Warranty.
	<b>Total Cost: \$152,830.00</b>
<i>Line Item 1:</i>	<i>For new 24 ga pre-finished roof apron style gutter and 10 ea. open face downspouts. ADD: \$ 19,845.00</i>

If further information is needed, please advise.

*Sincerely,*  
*James C. Schneider*  
*M.W. Tighe Roofing, Inc.*  
*920-923-2603*