



A G E N D A
CITY OF WAUPUN BOARD OF PUBLIC WORKS AND
FACILITIES COMMITTEE
Waupun City Hall – 201 E. Main Street, Waupun WI
Tuesday, December 13, 2022 at 4:30 PM

The Waupun Board of Public Works and Facilities Committee will meet in-person, virtual, and teleconference. Instructions to join the meeting are provided below:

To Join Zoom Meeting

<https://us02web.zoom.us/j/83430608522?pwd=N1pSZ05zUStFdVEybWxwSHcyc2JyUT09>

Meeting ID: 834 3060 8522

Passcode: 630201

By Phone: (312) 626-6799 US (Chicago)

CALL TO ORDER

ROLL CALL

Mayoral Appointment to Board of Public Works - Sullivan, Andrew

PERSONS WISHING TO ADDRESS THE BOARD OF PUBLIC WORKS--*State name, address, and subject of comments.*
(2 Minutes)

No Public Participation after this point.

FUTURE MEETINGS AND GATHERING INVOLVING THE BOARD OF PUBLIC WORKS

CONSIDERATION - ACTION

- [1.](#) Approve Minutes of the November 9, 2022 meeting.
- [2.](#) Madison St. Parking ordinance updates
- [3.](#) 5 year street plan

ADJOURNMENT

Upon reasonable notice, efforts will be made to accommodate disabled individuals through appropriate aids and services. For additional information, contact the City Clerk at 920-324-7915.



MINUTES—CITY OF WAUPUN BOARD OF PUBLIC WORKS & FACILITIES

Wednesday, 9-November-2022 – City Council Chambers

CALL TO ORDER

Chairman Peter Kaczmarki called the meeting to order at 4:32 PM

ROLL CALL

Roll call was taken:

Alders—Peter Kaczmarki, Mike Matoushek, William Langford

Citizens—Dale Heeringa, Ryan Mielke, Dave Rens, Gregg Zonnefeld

Ex-officio—DPW Director Jeff Daane, Recreation Director Rachel Kaminski, Mayor Rohn Bishop, City Administrator Kathy Schlieve

Guest—Carly Crook

PERSON WISHING TO ADDRESS THE BOARD OF PUBLIC WORKS & FACILITIES COMMITTEE

There were no guests for public comment portion of the meeting.

FUTURE MEETINGS AND GATHERINGS OF THE BOARD OF PUBLIC WORKS & FACILITIES COMMITTEE

Next meeting will be on Tuesday, December 13th at 4:30PM.

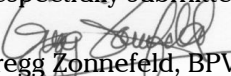
CONSIDERATION - ACTION

1. Approve minutes of the September 13, 2022 Board of Public Works & Facilities Meeting.
Minutes of the August 10 meeting were presented. Motion (Matoushek/Heeringa) to approve minutes as presented.
MOTION CARRIED (7-0)
2. Review ordinance to amend chapter six of the municipal code of the city of Waupun entitled “Traffic Code”
DPW Director Jeff Daane requests approval to add a stop sign on Sommerville Street at Rounsville Street. Motion (Zonnefeld/Rens) to approve recommending amendment to City Council. **MOTION CARRIED (7-0).**
3. 2023 One-Ton Flatbed purchase
DPW Director Daane explained the need for the timely purchase of a replacement for our 1999 Flatbed truck. Funding is in the equipment budget for this year. The price has increased from last year, as has the municipal discount through the state fleet discount. Mayor Bishop encouraged the BPW to explore how to make these purchases locally. Motion (Mielke/Rens) to approve the ordering of a 2023 Ford One-Ton Flatbed with hoist from Ewald upon City Council adopting the 2023 budget on November 9th. **MOTION CARRIED 6-1 (Zonnefeld).**
4. 2023 259DE – W CAT Skid Loader
DPW Director Daane laid out the government purchasing option through Sourcewell that can aid in replacing our 1996 Bobcat Skid Loader with a new model. Motion (Matoushek/Mielke) to approve the ordering of a 2023 259DE – W CAT Skid Loader upon City Council adopting the 2023 budget on November 9th. **MOTION CARRIED (7-0).**
5. 2023 Grapple Bucket
DPW Director Daane shared that currently the city uses pallet forks with clams to load brush from bins after storm damage. Using a Grapple bucket will improve efficiency for city crews. Motion (Zonnefeld/Matoushek) to approve the ordering of a Grapple Bucket upon City Council adopting the 2023 budget on November 9th. **MOTION CARRIED (7-0).**
6. Temporary easement form the dead end of Summer Avenue extending East approximately 450’.
The City of Waupun has engaged in conversation with the owner of the farm field that has water draining into the city north of Hawthorne Drive. Director Daane reported that while there is a storm pipe there that ends on Summer Avenue, extending this pipe and adding a swale should aid in major rain events. Estimated cost for the easement work is around \$1,000. Motion (Heeringa/Matoushek) to approve the City to work with MSA on a temporary easement for storm water swale work near the dead end of Summer Avenue. **MOTION CARRIED (7-0).**

ADJOURNMENT

Motion (Matoushek/Mielke) to adjourn the meeting of the BPW at 5:17PM. **MOTION CARRIED (7-0).**

Respectfully submitted,


Gregg Zonnefeld, BPW Clerk



AGENDA SUMMARY SHEET

MEETING DATE: December 12, 2022

TITLE: Madison St. Parking ordinance updates

AGENDA SECTION: Consideration/Action

PRESENTER: Jeff Daane

| DEPARMTENT GOAL(S) SUPPORTED <i>(if applicable)</i> | FISCAL IMPACT | |
|---|---------------|--|
| | | |

ISSUE SUMMARY

When new streets are designed and constructed they are updated for new codes for both vehicle traffic and pedestrian safety. The no parking areas change when new crosswalks are added and new design standards are implemented.

The 2019 project was from the bridge on N. Madison St. to E. Lincoln St. The Southern portion was pushed out a couple years as this was an STP-U grant we received in the amount of \$1,234,084. This was federally funded and the designers would have to follow federal guidelines for setting up signing and marking. The Southern portion went through many layers of reviews before approval. They follow MUTCD for parking zones and other features.

We did receive a couple of emails of concern for the parking restrictions that are now going to be in place for the Southern section from E. Lincoln St. to Doty St. They are here for you to review along with a couple emails from both the DOT and engineers for the project.

STAFF RECCOMENDATION:

Approve the parking ordinance with changes per changes to new crosswalks and designs during the past street reconstruction projects on Madison St.

ATTACHMENTS:

| |
|----------------------------|
| RECCOMENDED MOTION: |
|----------------------------|

| |
|---|
| Approve to pass on parking ordinance changes to City Council. |
|---|

ORDINANCE # _____

AN ORDINANCE TO AMEND CHAPTER SIX OF THE MUNICIPAL CODE OF THE CITY OF WAUPUN ENTITLED "TRAFFIC CODE."

THE COMMON COUNCIL OF THE CITY OF WAUPUN ORDAINS:

SECTION 1: Section 6.05(3)(c) of the Municipal Code of the City of Waupun entitled "Handicapped Parking Zones" is amended to add subsection 11 as specified on Exhibit 1 to this ordinance, which exhibit is attached and incorporated by reference.

SECTION 2: Section 6.05(3)(e) of the Municipal Code of the City of Waupun entitled "No Parking" is amended to add subsections 122 through 150 as specified on Exhibit 1 to this ordinance, which exhibit is attached and incorporated by reference.

SECTION 3: All ordinances or portions of ordinances inconsistent with the provisions of this ordinance are repealed.

SECTION 4: This Ordinance shall be in full force and effect on its passage and publication as provided by law.

Enacted this ____ day of _____, 2022.

Rohn W. Bishop
Mayor

ATTEST:

Angela Hull
City Clerk

EXHIBIT 1

MADISON STREET PARKING ORDINANCE ADDITIONS

6.05(3)(c) - Handicapped Parking Addition.

- 11. On the west side of N. Madison St. commencing 35 feet north of the north curbline of E. Franklin St. going north for 20 feet.**

6.05(3)(e) No Parking Additions.

122. On the west side of N. Madison St. commencing 642' 6" north of the north curbline of Monroe St. continuing south for 324 ft.
123. On the east side of N. Madison St. commencing 325' south of the south curbline of Nummerdor continuing south for 324'
124. At the intersection of N. Madison St. and Monroe St.
The west 37 feet on the north side of Monroe St.
The north 34 feet on the west side of N Madison St.
The west 29 feet on the south side of Monroe St.
The south 48 feet on the west side of N. Madison St.
125. On the east side of N. Madison St. commencing 405 feet north of the north curbline of Jackson St. continuing south for 73 feet.
126. At the intersection of N. Madison St. and Jackson St.
The west 35 feet on the north side of Jackson St.
The north 35 feet on the west side of N. Madison St
The north 37 feet on the east side of N. Madison St.
The east 26 feet on the north side of Jackson St
The south 38 feet on the west side of N. Madison St.
The south 25 feet on the east side of N. Madison St.
127. At the intersection of N. Madison St. and E. Franklin St.
The west 58 feet on north side of E. Franklin St.
The north 35 feet on the west side of N. Madison St.
The north 38 feet on the east side of N. Madison St.
The east 28 feet north side of E. Franklin St.
The south 38 feet on the east side of N. Madison St.
128. On the west side of N. Madison St., commencing 54 feet 6 inches south of the south curbline of E. Franklin St. continuing south for 11 feet.

129. On the east side of N. Madison St., commencing 122 feet south of the south curbline of E. Franklin St. continuing south for 15 feet.
130. On the west side of S. Madison St., commencing 144 feet north of the north curbline of E. Jefferson St. continuing south for 15 feet
131. On the east side of S. Madison St., commencing 178 feet north of the north curbline of E. Brown St. continuing south for 17 feet.
132. At the intersection of S. Madison St. and E. Brown St.
The north 32 feet and the south 38 feet on the west side of S. Madison St.
The north 71 feet and the south 67 feet on the east side of S. Madison St.
The west 28 feet and the east 30 feet on the north side of E. Brown St.
133. On the east side of S. Madison St. commencing 448 feet south of the south curbline of E. Brown St. continuing south for 34 feet.
134. On the east side of S. Madison St. commencing 675 feet south of the south curbline of E. Brown St. continuing south for 14 feet.
135. On the east side of S. Madison St. commencing 828 feet south of the south curbline of E. Brown St. continuing south for 16 feet.
136. On the east side of S. Madison St. commencing 880 feet south of the south curbline of E. Brown St. continuing south for 27 feet.
137. On the east side of S. Madison St. commencing 468 feet north of the north curbline of E. Lincoln St. continuing north for 46 feet.
138. On the east side of S. Madison St. commencing 437 feet north of the north curbline of E. Lincoln St. continuing north for 14 feet.
139. On the east side of S. Madison St. commencing 261 feet north of the north curbline of E. Lincoln St. continuing south for 27 feet.
140. On the east side of S. Madison St. commencing 222 feet north of the north curbline of E. Lincoln St. continuing south for 25 feet.
141. On the west side of S. Madison St. commencing 339 feet north of the north curbline of Olmstead St. continuing north for 16 feet.
142. On the west side of S. Madison St. commencing 226 feet north of the north curbline of Olmstead St. continuing north for 36 feet.

143. On the north side of Olmstead St. from the west curbline of S. Madison St. going west for 131 feet.
144. On the east side of S. Madison St. from the south curbline of E. Lincoln St. going south for 33 feet.
145. On the east side of S. Madison St. commencing 272 feet north of the north curbline of Park Ave. continuing north for 20 feet.
146. At the intersection of S. Madison St. and Park Ave (going west).
The north 34 feet of on the west side of S. Madison St.
The west 37 feet on the north and south side of Park Ave.
147. At the intersection of S. Madison St. and Park Ave (going east).
The north 113 feet on the east side of S. Madison St.
The east 42 feet on the north side of Park Ave.
The south 71 feet on the east side of S. Madison St.
The east 43 feet on the south side of Park Ave.
148. At the intersection of S. Madison St. and Doty St (going east)
The north 38 feet on the east side of S. Madison St.
The south 154 feet on the east side of S. Madison St.
The east 36 feet on the north side of Doty St.
The east 37 feet on the south side of Doty St.
149. At the intersection of S. Madison St. and Doty St. (going west)
The north 36 feet on the west side of S. Madison St.
The south 52 feet on the west side of S. Madison St.
The west 27 feet on the north side of Doty St.
The west 29 feet on the south side of Doty St.
150. On the east side of S. Madison St. commencing 92 feet north of the north curbline of Doty St. continuing north for 51 feet.

ORDINANCE # _____

AN ORDINANCE TO AMEND CHAPTER SIX OF THE MUNICIPAL CODE OF THE CITY OF WAUPUN ENTITLED "TRAFFIC CODE."

THE COMMON COUNCIL OF THE CITY OF WAUPUN ORDAINS:

SECTION 1: Section 6.05(2)(a) of the Municipal Code of the City of Waupun entitled "Two Hour Parking Limits" is amended to revise subsection 2. as follows:

2. Carrington Street, South Madison Street, South Mill Street and west side of South Forest Street between East Main Street and East Jefferson Street, except as otherwise provided in this Municipal Code.

SECTION 2: Section 6.05(2)(c) of the Municipal Code of the City of Waupun entitled "Fifteen Minute Limit" is amended to eliminate subsections 2. and 3. in their entirety.

SECTION 3: Section 6.05(2)(d) of the Municipal Code of the City of Waupun entitled "Thirty Minute Limit" is amended as follows:

(d) Thirty Minute Limit. The east side of South Madison Street extending from the south curb line of East Jefferson Street and continuing south for 38 feet.

SECTION 4: Section 6.05(3)(e) of the Municipal Code of the City of Waupun entitled "No Parking" is amended to revise subsection 2. as follows:

2. On the east side of North Madison Street commencing 149 feet north of the north curb line of East Main Street and continuing north for a distance of 24 feet.

SECTION 5: Section 6.05(3)(e) of the Municipal Code of the City of Waupun entitled "No Parking" is amended to revise subsection 11. as follows:

11. At the intersection of East Main Street and Madison Street:

The west 26 feet and the east 38 feet on the north side of E. Main St.

The west 37 feet and the east 30 feet on the south side of E. Main St.

The north 47 feet on the west side of N. Madison St.

The north 41 feet on the east side of N. Madison St.

The south 43 feet on the west side of S. Madison St.

The south 74 feet on the east side of S. Madison St.

SECTION 6: Section 6.05(3)(e) of the Municipal Code of the City of Waupun entitled "No Parking" is amended to revise subsection 14. as follows:

14. At the intersection of South Madison Street and East Jefferson Street:

The south 48 feet and the north 52 feet on the west side of S. Madison St.

The south 30 feet and the north 43 feet on the east side of S. Madison St.

The west 46 feet and the east 37 feet on the south side of E. Jefferson St.

SECTION 7: Section 6.05(3)(e) of the Municipal Code of the City of Waupun entitled "No Parking" is amended to revise subsection 25. as follows:

25. The south 106 feet and the north 64 feet of that portion of the west side of S. Madison St. lying between E. Lincoln St. and Olmstead St.

SECTION 8: Section 6.05(3)(e) of the Municipal Code of the City of Waupun entitled "No Parking" is amended to revise subsection 26. as follows:

26. The south 85 feet of that portion of the west side of S. Madison St. lying between Olmstead St. and the Wisconsin State Prison.

SECTION 9: Section 6.05(3)(e) of the Municipal Code of the City of Waupun entitled "No Parking" is amended to revise subsection 30. as follows:

30. The south side of that portion of E. Lincoln St. lying between the railroad tracks and S. Watertown St., and the north side of that portion of E. Lincoln St. lying between S. Madison St. and Carrington St. and the east 60 feet of the north side of that portion of E. Lincoln St. lying between S. Madison St. and S. Drummond St.

SECTION 10: Section 6.05(3)(e) of the Municipal Code of the City of Waupun entitled "No Parking" is amended to revise subsection 32. as follows:

32. The east 62 feet of the south side of that portion of Olmstead St. lying between S. Madison St. and S. Drummond St.

SECTION 11: Section 6.05(3)(e) of the Municipal Code of the City of Waupun entitled "No Parking" is amended to revise subsection 61. as follows:

61. The west side of S. Madison St. from its intersection with E. Lincoln St. to a point 106 feet south of the south curb line of E. Lincoln St. and from its intersection with Park Ave. to a point 28 feet north of the north curb line of Park Ave.

SECTION 12: Section 6.05(3)(e) of the Municipal Code of the City of Waupun entitled "No Parking" is amended to revise subsection 76. as follows:

76. The east side of S. Madison St. from the north curb line of E. Lincoln St. extending north a distance of 38 feet.

SECTION 13: Section 6.05(3)(e) of the Municipal Code of the City of Waupun entitled "No Parking" is amended to eliminate subsections 77, 78 and 79 in their entirety.

SECTION 14: Section 6.05(3)(e) of the Municipal Code of the City of Waupun entitled "No Parking" is amended to revise subsection 87. as follows:

87. The west side of S. Madison St. commencing at the south curb line of Park Ave. and continuing south for 148 feet.

SECTION 15: Section 6.05(3) of the Municipal Code of the City of Waupun entitled "RESTRICTED PARKING AT ANY TIME" is amended to eliminate in their entirety, subsection (q) "North Madison Street Parking Lot Loading Zone," and subsection (y) "Restricted Parking, South Madison Street."

SECTION 16: All ordinances or portions of ordinances inconsistent with the provisions of this ordinance are repealed.

SECTION 17: This Ordinance shall be in full force and effect on its passage and publication as provided by law.

Enacted this ____ day of _____, 2022.

Rohn W. Bishop
Mayor

ATTEST:

Angela Hull
City Clerk

6.05 PARKING LIMITATIONS.

(1) OFF-STREET PARKING.

- (a) When signs are erected in any off-street municipal parking lot giving notice thereof, no person shall park a vehicle in such lot for longer than 12 hours in any day, excepting on New Year's Day, Memorial Day, Independence Day, Labor Day, Thanksgiving, and Christmas when parking shall be restricted.
- (b) This ordinance shall not alter the existing winter parking restrictions identified in Section 6.05(5) of the Waupun Municipal Code, and no person shall park any vehicle in any off-street parking municipal lot between 2:00 a.m. and 6:00 a.m. on any day during December, January, February and March, except for areas designated in the Waupun Municipal Code as "Overnight Off-Street Parking Areas".

(2) RESTRICTED PARKING. When signs are erected in any block giving notice thereof, no person shall park a vehicle for longer than the period hereinafter specified at any time between 8:00 a.m. and 6:00 p.m., except Sundays and the following holidays: New Year's Day, Memorial Day, Independence Day, Labor Day, Thanksgiving and Christmas, or between 8:00 a.m. and 9:00 p.m. on Fridays upon the following streets or portions of streets, except when parking meters shall be erected on any portion thereof:

(a) Two Hour Parking Limits.

- 1. E. Main St. from Watertown St. to the railroad tracks of the railroad tracks.
- 2. Carrington St., S. Madison St., S. Mill St. and the west side of S. Forest St. between E. Main St. and E. Jefferson St. except as otherwise provided in this Municipal Code.
- 3. Fond du Lac St., N. Madison St. and N. Mill St. Between E. Main St. and E. Franklin St., except as otherwise provided in this Municipal Code.
- 4. The north side of E. Franklin St. from Fond du Lac St. to Drummond St., except for the east 215 feet (front of 450 E. Franklin St.) and the west 150 feet (front of post office) of that portion of E. Franklin St. lying between the intersection of E. Franklin St. and N. Madison St. and E. Franklin St. and Fond du Lac St.
- 5. The south side of E. Jefferson St. from Carrington St. to Drummond St.
- 6. The south side of Olmstead St.
- 7. The east 98 feet of the south side of that portion of E. Franklin St. lying between N. Drummond St. and the railroad tracks.
- 8. The north 239.25 feet of the east side of that portion of S. Madison St. lying south of the intersection with E. Lincoln St.
- 9. The north side of that portion of E. Spring St. lying between N. Madison St. and Home Ave.
- 10. The east side of S. Drummond St. from its intersection with Olmstead St. to its intersection with Lincoln St.
- 11. The north side of W. Main St. beginning 27 feet west of the west curbline of Commercial St. and continuing westerly for a distance of 64 feet.

(b) Three Hour Parking Limit.

- 1. The east side of S. Madison St. extending from the north curbline of E. Lincoln St. and continuing north to a point 68 feet south of the south curbline of E. Jefferson St.
- 2. The west side of S. West St. between W. Brown St. and Fox Lake Rd., except for the north 250 feet thereof.

Formatted: Font color: Red

-
3. The north side of E. Brown St. between Carrington St. and Watertown St. between the hours of 6:00 a.m. and 6:00 p.m.
 4. The east side of Division St. between Grandview Ave. and a point that is 343 feet north of the north curbline of Grandview Ave. between the hours of 7:00 a.m. and 7:00 p.m.
 5. The west side of S. Division St., beginning 235 feet north of the curbline of Grandview Ave., and continuing northerly for a distance of 140 feet, between the hours of 7:00 a.m. and 7:00 p.m.
 6. The north side of W. Lincoln St. commencing at the east curbline of Rens Way and continuing east to a point due north of the west curbline of Pattee Dr.

(c) Fifteen Minute Limit.

1. The west 150 feet of the north side of that portion of E. Franklin St. (front of post office) lying between the intersection of E. Franklin St. and N. Madison St. and E. Franklin St. and Fond du Lac St.
2. ~~On the east of North Madison St. commencing 138 feet north of the north curbline of East Main St. and continuing north for a distance of 19 feet.~~
3. ~~That portion of the east side of S. Madison St. lying between the 2 driveways to the off-street parking lot of the Pella Lutheran Church, which is part of Secs. 90, 91, and 92.~~

(d) Thirty Minute Limit. The east side of S. Madison St. extending from the south curbline of E. Jefferson St. and continuing south for ~~68~~ 38 feet.

(3) RESTRICTED PARKING AT ANY TIME.

(a) Two-Hour Limit. When signs are erected in any block giving notice thereof, no person shall park a vehicle for longer than 2 hours at any time upon the following streets or portions of streets:

1. On the south side of E. Jefferson St. from S. Drummond St. to S. Forest St.
2. On S. Drummond St. from E. Main St. to E. Brown St.
3. On Shaler Dr. between E. Main St. and E. Jefferson St.
4. On the east side of N. Drummond St. starting 29 feet north of the intersection of E. Main St continuing north to the to the intersection of E. Franklin St.

(b) Three-Hour Limit. S. Grove St. between the hours of 7:30 a.m. and 4:30 p.m. during school days on the east and west sides of S. Grove St. commencing at the south curbline of Sawyer St. to the north curbline of Argonne St.

(c) Handicapped Parking Zones. The following areas shall be signed for handicap parking and no person shall park or leave any vehicle standing in these areas unless a vehicle occupant is authorized by State law to utilize such parking areas:

1. On the east side of N. Madison St. commencing 39 feet north of the north curb line of E. Main St., going north for 21 feet.
2. On the west side of Carrington St. commencing 39 feet south of the south curb line of E. Main St., going south for 20 feet.
3. Four stalls as designated by signs in the parking lot located south of the 300 Block of E. Main St. (between S. Mill St., S. Madison St., E. Main St. and E. Jefferson St.). Part of Lots 1, 2, 3, 4, 5 and 6, Block 10, Plat of East Waupun.
4. On the east side of Cochrane St. commencing 232 feet south of the south curbline of E. Lincoln St. going south for 57 feet.

-
5. On the west side of Pine St. commencing 224 feet north of the north curblineline of Tulip Ln. going north for 20 feet. (Cr. #16-03)
 6. Four stalls as designated by signs in the off-street parking area on W. Lincoln St. between Rens Way and Pattee Dr.
 7. On the east side of N. Madison St. commencing 38 feet north of the north curblineline of E. Franklin St. going north for 20 feet.
 8. On the west side of S. Watertown St. commencing 137 feet north of the curblineline of S. Watertown St. and E. Lincoln St. going north for 60 feet.
 9. On the north side of Buwalda Dr. commencing 375 feet west of the curblineline of Buwalda Dr. and Shaler Dr. going west for 56 feet.
 10. On the west side of Brandon St. commencing 507 feet north of the curblineline of Brandon St. and Rock River Ave. going north for 56 feet.
- (d) Senior Center Van Parking Stall.
1. One stall as designated by sign in the parking lot located south of the 300 Block of E. Main Street (between S. Mill St., S. Madison St., E. Main St. and E. Jefferson St.). Part of Lots 1, 2, 3 4, 5 and 6, Block 10, Plat of East Waupun.
- (e) No Parking. When signs are erected in any block giving notice thereof, no person shall park a vehicle at any time upon the following streets or portions of streets:
1. On the east side of Carrington St. between E. Jefferson St. and E. Brown St.
 2. On the east side of N. Madison St. commencing ~~138~~ 149 feet north of the north curblineline of E. Main St. and commencing north for a distance of ~~19~~ 24 feet.
 3. On the south side of Brown St. from Carrington St. to Walker St.
 4. On either side of E. Jefferson St. from the railroad tracks to Drummond St.
 5. On the north side of E. Jefferson St. from Drummond St. to Young St.
 6. On the south side of E. Franklin St. between N. Watertown St. and N. Drummond St.
 7. On the east side of N. Forest St. between Main St. and Franklin St.
 8. At the intersection of E. Main St. and Drummond St.
 - The west 29 feet and the east 86 feet on the north side of E. Main St.
 - The west 21 feet and the east 31 feet on the south side of E. Main St.
 - The north 28 feet on the west side of N. Drummond St.
 - The north 29 feet on the east side of N. Drummond St.
 - The south 18 feet on the west side of S. Drummond St.
 - The south 22 feet on the east side of S. Drummond St.
 9. At the intersection of E. Main St. and Forest St.
 - The west 28 feet and the east 41 feet on the north side of E. Main St.
 - The west 39 feet and the east 31 feet on the south side of E. Main St.
 - The north 32 feet on the west side of N. Forest St.

The north 26 feet on the east side of N. Forest St.

The south 32 feet on the west side of S. Forest St.

10. At the intersection of E. Main St. and Mill St.

The west 30 feet and the east 41 feet on the north side of E. Main St.

The west 40 feet and the east 29 feet on the south side of E. Main St.

The north 29 feet on the west side of N. Mill St.

The north 142 feet on the east side of N. Mill St.

The south 34 feet on the west side of S. Mill St.

The south 32 feet on the east side of S. Mill St.

11. At the intersection of E. Main St. and Madison St.

The west 26 feet and the east ~~28~~ 38 feet on the north side of E. Main St.

The west 37 feet and the east 30 feet on the south side of E. Main St.

The north 47 feet on the west side of N. Madison St.

The north ~~40~~ 41 feet on the east side of N. Madison St.

The south ~~47~~ 43 feet on the west side of S. Madison St.

The south ~~58~~ 74 feet on the east side of S. Madison St.

12. At the intersection on E. Main St. and Fond du Lac St./Carrington St.

The west 29 feet and the east 46 feet on the north side of E. Main St.

The west 42 feet and the east 107 feet on the south side of E. Main St.

The north 64 feet on the west side of Fond du Lac St.

The north 42 feet on the east side of Fond du Lac St.

The south 27 feet on the west side of Carrington St.

The south 48 feet on the east side of Carrington St.

13. At the intersection of E. Main St. and Watertown St.

The west 58 feet and the east 154 feet on the north side of E. Main St.

The west 86 feet and the east 128 feet on the south side of E. Main St.

The north 74 feet on the west side of N. Watertown St.

The north 62 feet on the east side of N. Watertown St.

The south 87 feet on the west side of S. Watertown St.

The south 72 feet on the east side of S. Watertown St.

14. At the intersection of S. Madison St. and E. Jefferson St.

The south ~~47~~ 48 feet and the north ~~58~~ 52 feet on the west side of S. Madison St.

The south ~~24~~ 30 feet and the north 43 feet on the east side of S. Madison St.

The west 46 feet and the east 37 feet on the south side of E. Jefferson St.

Formatted: Font color: Red, Strikethrough

Formatted: Font color: Red

Formatted: Font color: Red, Strikethrough

Formatted: Font color: Red, Strikethrough

-
15. The south 142 feet of the east side of N. Mill St., being that portion of the east side of N. Mill St. between the center line of E. Main St. and the alley running in a general east-west direction through Block 15 of the Plat of East Waupun.
 16. On the east side of Walker St. from the intersection of W. Brown St. and Walker St., extending south a distance of 175 feet.
 17. Upon any street or alley whereon official no parking signs have been erected at or under the direction of the Chief of Police.
 18. The east side of S. Mill St. between E. Main St. and E. Jefferson St.; the west side of S. Mill St. between E. Main St. and E. Jefferson St.; and the west side of S. Mill St. between E. Jefferson St. and E. Brown St.
 19. On the east side of Carrington St. between E. Brown St. and E. Lincoln St.
 20. On the east side of Zimmerman St. between W. Franklin St. and W. Main St.
 21. On the east side of N. Mill St. from E. Main St. and E. Franklin St.
 22. The north side of W. Main St. between Brandon St. and River St.
 23. The west side of Brandon St. commencing at the north curblin of Main St. and continuing north 160 feet.
 24. All of the east and west sides of Beaver Dam St. lying between Jefferson St. and Main St.
 25. The south ~~108~~ 106 feet and the north ~~62~~ 62 ~~64~~ feet of that portion of the west side of S. Madison St. lying between E. Lincoln St. and Olmstead St.
 26. The south ~~87~~ 85 feet of that portion of the west side of S. Madison St. lying between Olmstead St. and the Wisconsin State Prison.
 27. The entire east side of that portion of S. Drummond St. lying between E. Jefferson St. and E. Brown St.
 28. The northwest 55 feet of the northeast side of N. Grove St. and the northwest 211 feet of the southwest side of N. Grove St., measured from the point of intersection of N. Grove St. with the southeast boundary line of Fond du Lac St.
 29. The east side of S. Forest St. between E. Main St. and E. Jefferson St.
 30. The south side of that portion of E. Lincoln St. lying between the railroad tracks and S. Watertown St., and the north side of that portion of E. Lincoln St. lying between S. Madison St. and Carrington St. and the east ~~50~~ 60 feet of the north side of that portion of E. Lincoln St. lying between S. Madison St. and S. Drummond St.
 31. The east side of Beaver Dam St. from the south curblin of W. Brown St. extending south a distance of 43 feet.
 32. The east ~~64~~ 62 feet of the south side of that portion of Olmstead St. lying between S. Madison St. and S. Drummond St.
 33. The north side of Olmstead St.
 34. The east 48 feet of the west 348 feet of that portion of the south side of W. Main St. lying between the railroad tracks and the intersection with State St.
 35. That portion of the south side of E. Main St. lying between Shaler Dr. and the STH 151 overpass.

Formatted: Font color: Red

Formatted: Font color: Red, Strikethrough

Formatted: Font color: Red

Formatted: Font color: Red, Strikethrough

Formatted: Font color: Red

-
36. On that portion of the west side of S. Division St. between the driveway at 316 S. Division St. and the driveway at 318 S. Division St.
 37. The south side of Wilcox St. between Carrington St. and S. Grove St.
 38. The west 30 feet of the north side of E. Brown St. between S. Mill St. and S. Forest St.
 39. The north 96 feet of the east side of Fond du Lac St. lying between E. Main St. and E. Franklin St.
 40. Reserved.
 41. Reserved.
 42. The 120 feet of the north side of W. Jefferson St. being immediately east of the intersection of W. Jefferson St. and Beaver Dam St.
 43. The west side of S. Division St. between W. Jefferson St. and W. Brown St.
 44. The north side of W. Jefferson St. from the railroad crossing to S. State St.
 45. The east side of S. Forest St. from the corner of S. Forest and E. Jefferson St. South to the corner of S. Forest and E. Brown St. However, this prohibition shall not apply to vehicles temporarily lining up for a funeral procession.
 46. The west side of S. Drummond St. from the intersection of the west curblineline of S. Drummond St. and the south curblineline of E. Jefferson St., thence south 78 feet.
 47. The west side of S. Drummond St. from the intersection of the west curblineline of S. Drummond St. and the south curblineline of E. Brown St., thence 61 feet south to the north edge of the first driveway thereon.
 48. Along the north side of W. Main St., starting 138 feet west of the west curb line of River St. going west for 792 feet.
 49. On the south side of W. Jefferson St. from the east curblineline of S. State St. easterly 37 feet.
 50. The west side of N. Drummond St. from the south curblineline of E. Franklin St. southerly 173 feet.
 51. The south side of E. Main St. from the right-of-way of the railroad tracks easterly 148 feet.
 52. The north side of E. Main St. from the right-of-way of the railroad tracks easterly 202 feet.
 53. The east side of S. Drummond St. between E. Main St. and E. Jefferson St.
 54. The west side of Fond du Lac St. from a point 23 feet from the intersection of the south curblineline of the alley, thence in a northeasterly direction to the intersection of the alley.
 55. The south side of W. Main St. between Johnson St. and Fox Lake Rd.
 56. The east side of S. Drummond St. from its intersection with E. Brown St. to a point 47 feet south of such intersection.
 57. The west side of N. State St. a distance of 162 feet from the alley to W. Franklin St.
 58. Reserved.
 59. The east side of Morse St. from E. Lincoln St. to Park Ave.
 60. The east side of S. Mill St., commencing at the curblineline of E. Brown St. and 40 feet north from that point.

-
61. The west side of S. Madison St. from its intersection with E. Lincoln St. to a point ~~104~~ 106 feet south of the south curblineline of E. Lincoln St. and from its intersection with Park Ave. to a point 28 feet north of the north curblineline of Park Ave.
 62. The west side of S. Drummond St., commencing on the north side of the truck entrance of Waupun Correctional Institution Central Receiving, and continuing north for 20 feet.
 63. The west side of Drummond St., commencing on the south side of the truck entrance of Waupun Correctional Institution Central Receiving, and continuing south for 20 feet.
 64. The east side of S. Madison St., commencing at the south side of the Pella Lutheran Church exit and continuing south for 26 feet.
 65. On both sides of Shaler Dr., from E. Main St. through E. Jefferson St.
 66. On both sides of Gateway Dr., from its intersection with E. Main St. and continuing northerly through its intersection with Kelly Ave.
 67. The circular turnaround on Robin Rd.
 68. The south side of W. Jefferson St. commencing at the west curblineline of S. Division St. and continuing west for 198 feet.
 69. The north side of W. Brown St. commencing at the west curblineline of S. Division St. and continuing west for 280 feet.
 70. The west side of Elm Ave. commencing at the south curblineline of Visser Ave. and continuing south to the north curblineline of Grandview Ave.
 71. The west side of Fox Lake Rd. commencing at the south curb line of W. Main St. and continuing south for 182 feet.
 72. The west side of River St. commencing at the south curblineline of Pioneer Ave. and continuing south for 119 feet.
 73. The north side of E. Lincoln St. commencing at the east curblineline of S. Grove St. and continuing east to the west curblineline of Shaler Dr.
 74. The north side of Main St. from the east curblineline of Pluim Dr. to the west curblineline of Shaler Dr.
 75. The south side of Main St. from a point due south of the west curblineline of Pluim Dr. to the west curblineline of Shaler Dr.
 76. The east side of S. Madison St. from the north curblineline of E. Lincoln St. extending north a distance of ~~47~~ 38 feet.
 - ~~77. The west side of S. Madison St. from the north curblineline of E. Jefferson St. extending north a distance of 58 feet.~~
 - ~~78. The west side of N. Madison St. from the north curblineline of E. Franklin St. extending north a distance of 40 feet.~~
 - ~~79. The east side of N. Madison St. from the north curblineline of E. Franklin St. extending north a distance of 38 feet.~~
 80. The west side of Beaver Dam St. from the north curblineline of W. Brown St. extending north a distance of 50 feet.
 81. The west side of Beaver Dam St. from the south curblineline of W. Brown St. extending south a distance of 35 feet.

-
82. The east side of Beaver Dam St. from the north curblineline of W. Brown St. extending north a distance of 61 feet.
 83. The east side of Brandon St. commencing at the north curblineline of Main St. and continuing north to a point which is 72 feet north of the north end of the Rock River Bridge.
 84. Reserved.
 85. The east side of Elm Ave. commencing at the north curblineline of Grandview Ave. and extending north to the south curblineline of McKinley Ave.
 86. The fire lane lying south of the Waupun Community Center and located immediately adjacent to Spring St., except for designated parking stalls.
 87. On the west side of S. Madison St. commencing at the south curblineline of Park Ave. and continuing south for ~~20~~ 148 feet.
 88. The south side of W. Lincoln St. commencing at the east curb line of Beaver Dam St. and continuing east to the intersection of W. Lincoln St. with Waubun Ave.
 89. The east side of N. Drummond St. commencing at its intersection with E. Main St. and continuing north for 97 feet.
 90. The south side of Wilcox St. commencing at the west curb line of Welch St. extended south and continuing west for 165 feet.
 91. The south side of N. Watertown St. commencing at the easterly curb line of Fond du Lac St. extending in a southeasterly direction to a point due west of the north curb line of Park St. Also the north side of N. Watertown St. commencing at the easterly curb line of Fond du Lac St. extending in a southeasterly direction to the north curb line of Park St.
 92. The north side of Mayfair St. commencing 245 feet east of the curblineline of S. Watertown St. going east along property line of 600 Mayfair St. for 185 feet.
 93. The north side of W. Jefferson St. extending from the west curblineline of Liberty St. and continuing west for 397 feet.
 94. The west side of Rens Way commencing at the intersection of Pleasant Ave. going north for 30 feet.
 95. The north and south sides of Pleasant Ave. commencing at the intersection of Rens Way going west for 29 feet.
 96. The west side of Rens Way commencing at the intersection of Pleasant Ave. going south for 30 feet.
 97. The south side of W. Main St. from the west curb line of Fox Lake Rd. going west for 350 feet.
 98. The south side of E. Main St. from the west curblineline of Shaler Dr. going west for 210 feet.
 99. On the south side of Jackson St. from the East curblineline of N. Madison St. to the West curblineline of Fond du Lac St. (Cr. #16-04)
 100. The east side of Beaver Dam St. from the south curblineline of W. Jefferson St. extending south a distance of 61 feet. (Cr. #16-08)
 101. The south side of W. Jefferson Street from the west curblineline of Beaver Dam St. extending east for a distance of 30 feet. (Cr. #16-08)
 102. The south side of W. Main St, between Beaver Dam St. and Elm Ave.

-
103. The north side of W. Main St, from the east curb line of Brandon St. going east for 402 feet.
 104. The south side of W. Main St., from the east curb line of Beaver Dam St. going east for 309 feet.
 105. The south side of W. Main St. between S. West St. to County Park Rd.
 106. The north side of W. Main St. between N. West St. to County Park Rd.
 107. The east side of Fox Lake Rd. commencing at the south curb line of W. Main St. going south for 230 feet.
 108. The south side of E. Main St. from the west curb line of Johnson St. to the east curb line of Fox Lake Rd.
 109. On the south side of W. Main St. commencing 304 feet west of the west curb line of Hillyer St. going west for 50 feet.
 110. On the south side of W. Main St. commencing 350 feet east of the east curb line of Bly St. going east for 49 feet.
 111. On the north side of W. Main St. commencing 394 feet west of the west curb line of N. Division St. going west for 99 feet.
 112. On the north side of W. Main St. commencing 266 feet east of Zimmerman St. going east for 115 feet.
 113. At the intersection of W. Main St. and S. State St.
The west 17 feet on the south side of W. Main St.
The west 19 feet on the north side of W. Main St.
 114. At the intersection of W. Main St. and N. Division St.
The west 48 feet on the north side of W. Main St.
The east 48 feet on the north side of W. Main St
The north 22 feet on the east side of N. Division St.
The north 24 feet on the west side of N. Division St.
 115. At the intersection of W. Main St. and Bly St.
The east 45 feet on the south side of W. Main St.
The west 50 feet on the south side of W. Main St.
The south 50 feet on the east side of Bly St.
The south 50 feet on the west side of Bly St.
 116. At the intersection of W. Main St. and Hillyer St.
The east 49 feet on the south side of W. Main St.
The west 51 feet on the south side of W. Main St.
The south 49 feet on the east side of Hillyer St.
The south 49 feet on the west side of Hillyer St.
 117. At the intersection of W. Main St. and Zimmerman St.
The east 59 feet on the north side of W. Main St.

The west 57 feet on the north side of W. Main St.

The north 33 feet on the west side of Zimmerman St.

118. At the intersection of W. Main St. and Elm Ave.

The south 50 feet on the east side of Elm Ave.

The south 50 feet on the west side of Elm Ave.

The west 57 feet on the south side of W. Main St.

119. At the intersection of W. Main St. and River St.

The north 23 feet on the east side of River St.

The north 50 feet on the west side of River St.

The west 54 feet on the north side of W. Main St.

120. At the intersection of W. Main St. and Johnson St.

The east 118 feet on the south side of W. Main St.

The south 36 feet on the east side of Johnson St.

The south 44 feet on the west side of Johnson St.

121. At the intersection of W. Main St. and West St.

The east 48 feet on the south side of W. Main St.

The east 92 feet on the north side of W. Main St.

The south 32 feet on the east side of S. West St.

The north 50 feet on the east side of N. West St.

- (f) Street Storage. No person shall, without permit, park or store any motor home, mobile home, manufactured home, camper trailer or any motor vehicle having 2 or less axles, on any street in excess of 24 hours. No person shall, without permit, park or store any semi-tractor trailer or motor vehicle having more than 2 axles on any street in excess of 2 hours. This section shall not apply to the following:
1. Vehicles owned or operated by the City of Waupun.
 2. Commercial vehicles while directly engaged in activities for which such vehicles are necessary, including without limitation, loading and unloading goods, digging, hauling and trimming.
 3. The Board of Public Works may authorize, by resolution or otherwise, the issuance of complimentary parking permits to motor vehicle owners or operators visiting the City for the purpose of a convention, conference, tournament or other function determined to be primarily for a public, charitable, religious, philanthropic, educational or other nonprofit purpose.
- (g) Street Cleaning and Repair. Upon direction by an officer, the owner or operator of any parked vehicle shall immediately move the same from any street or alley for the purpose of permitting such street or alley to be repaired or cleaned or for the removal of snow.
- (h) Wisconsin State Penitentiary Official Parking Zone. That portion of the west side of S. Madison St. extending from a point 96 feet north of the main S. Madison St. entrance to a point 96 feet south of the main S. Madison St. entrance is designated as a restricted parking area for those persons having official business at the Wisconsin State Penitentiary. The warden, or his duly authorized agent, shall determine the persons who may utilize this restricted parking area while on official business, and no

other person shall park a motor vehicle or bicycle in the restricted parking area without the authorization of the warden or his designated agent.

- (i) Waupun Memorial Hospital Official Parking Zone. That portion of the east side of Elm Ave. extending from the south edge of the driveway leading to the Elm Ave. Clinic, southerly for 150 feet is designated as a restricted parking area for those doctors and physicians having official business at the Waupun Memorial Hospital. The Administrator of the Waupun Memorial Hospital, or his authorized agent, shall determine who may utilize this restricted parking area while on official business, and no other person shall park a motor vehicle or bicycle in the restricted parking area without the authorization of the Administrator or his designated agent.
- (j) Hospital Zone. When signs are erected giving notice, no person shall park a vehicle from Monday through Friday of any week on the west side of Beaver Dam St. commencing at the south curblineline of W. Jefferson St. extended south to the north curblineline of W. Brown St.
- (k) Hospital Parking. That portion of the north side of W. Brown St. extending from the curblineline of Beaver Dam St. continuing west 215 feet to the east side of the driveway is designated as clinic patient parking from 7:00 a.m. to 5:00 p.m. Monday through Friday, excluding Holidays. The administrator of the Waupun Memorial Hospital, or his or her authorized agent, shall determine who may utilize this restricted parking area while on official business, and no other person shall park a motor vehicle or bicycle in the restricted parking area without the authorization of the Administrator or his or her designated agent. Signs shall be placed giving adequate notice of these restrictions.
- (l) Restricted Parking. There shall be no parking on the west side of that portion of N. Grove St. lying between E. Franklin St. and Chapman Dr. between the hours of 6:00 p.m. and 10:00 p.m. during the months of May through August.
- (m) Mill St. Loading Zone. The east side of N. Mill St. 30 feet south of the public alley to a point 110 feet south of the southerly line of the alley shall be designated as a "Loading Zone," and no parking for purpose other than for the loading or unloading of supplies shall be permitted.
- (n) Reserved.
- (o) Waupun Correctional Institution Parking Zones. The following parking zones are established:
 - 1. A loading zone is established on the west side of S. Madison St., commencing 275 feet south from the south curblineline of E. Brown St. and continuing south for a distance of 40 feet; this area shall be signed as a "Loading Zone" and no person shall park or leave any vehicle standing in this area unless the vehicle is being used to transport goods to or from the Waupun Correctional Institution.
 - 2. A handicap parking zone is established on the west side of S. Madison St., commencing 315 feet south from the south curblineline of E. Brown St. and continuing south for a distance of 82 feet; this area shall be signed for handicap parking and no person shall park or leave any vehicle standing in this area unless a vehicle occupant is authorized by State law to utilize such parking area.
 - 3. No person shall park any vehicle for longer than 10 minutes on the west side of S. Madison St., commencing 767 feet south from the south curblineline of E. Brown St. and continuing south for a distance of 86 feet.
- (p) School Bus Loading Zones. The following street areas shall each be designated as a school bus loading zone, and no person may stop or leave any vehicle standing, whether temporarily or otherwise, between the hours of 7:30 a.m. and 4:30 p.m. during school days, except for school buses receiving and discharging passengers:
 - 1. E. Spring St. along the south curblineline beginning at a point 450 feet east of the east curblineline of North Madison Street for a distance of 435 feet east.

-
- ~~(q) North Madison Street Parking Lot Loading Zone. One parking space situated on the west side of the buildings fronting N. Madison St. on the 100 block of N Madison St. shall be designated as a "Loading Zone," to be used as such only while actually in the process of loading or unloading material or supplies from or to a motor vehicle. No person may stop or leave any vehicle standing, whether temporarily or otherwise, in this space between the hours of 7:30 a.m. and 6:00 p.m., Monday through Saturday. Such parking space commences 74 feet north of the north right-of-way line of the alley running in an easterly and westerly direction through that block. Such parking space is also 94 feet south of the south curbline of E. Franklin St.~~
- (r) Restricted Parking Space, S. Drummond St. Loading Zone. Between the hours of 8:00 a.m. and 4:00 p.m., Monday through Friday, there shall be no parking permitted along the east side of S. Drummond St., commencing with the intersection of the south line of the prison alley and S. Drummond St. southerly for a distance of 57 feet.
- (s) Pella Lutheran Church Loading Zone. That portion of the east side of S. Madison St., being 84 74 feet in length, and lying between the 2 driveways leading to the off-street parking lot of the Pella Lutheran Church shall be designated as a "Loading Zone," to be used as such only while actually in the process of unloading or loading materials, supplies or persons from or to a motor vehicle. No person may stop or leave any vehicle standing, whether temporary or otherwise, in this space other than for the above purposes.
- (t) National Rivet Loading Zone. That portion of the west side of S. Drummond St. lying between a point 150 feet south of the south curbline of E. Main St. and E. Jefferson St. shall be designated as a loading zone to be used as such by persons only while actually in the process of loading or unloading materials, supplies or persons from or to a motor vehicle. No person may stop or leave any vehicle standing, whether temporary or otherwise, in this space other than for the above purposes.
- (u) 221 E. Jefferson St. Loading Zone. One 30-foot parking space situated on the south side of E. Jefferson St. in front of the building known as 221 E. Jefferson St. shall be designated as a loading zone to be used as such by persons only while actually in the process of unloading or loading materials, supplies or persons to and from a motor vehicle. No person may stop or leave any vehicle standing, whether temporarily or otherwise, in this space other than for the above purpose. In addition to the above 30 foot parking space, one 40-foot parking space, situated on the west side of S. Mill St., extending from the corner of E. Jefferson St. south 40 feet shall also be designated as a loading zone to be used as described in the sentences immediately preceding.
- (v) Parking in City Parks. Parking within City parks shall not be permitted without prior approval of the Director of Public Works.
- (w) Restricted Parking Space, N. Forest St. Between the hours of 7:00 a.m. and 4:00 p.m., Monday through Friday, there shall be no parking permitted along the east side of N. Forest St. commencing at the north curbline of Jackson St. and thence north 100 feet.
- (x) Day Care Loading Zone. The north 68 feet of the east side of Walker St. and shall be designated as a loading zone to be used as such by persons only while actually in the process of loading or unloading materials, supplies or persons from or to a motor vehicle. No person may stop or leave any vehicle standing, whether temporary or otherwise, in this space other than for the above purposes.
- ~~(y) Restricted Parking, S. Madison St. No person shall park or leave any vehicle standing, whether temporarily or otherwise, on the west side of S. Madison St. from the north curbline of Olmstead St. and continuing north 85 feet.~~
- (z) E. Lincoln St. Restrictions. No person may stop or leave any vehicle standing, whether temporarily or otherwise, between the hours of 7:30 a.m. and 4:30 p.m. during school days on the south side of E.

Lincoln St. commencing at the east curbline of S. Grove St. and continuing east to the west curbline of Shaler Dr.

- (aa) There shall be no parking on the east side of Elm Ave. commencing 147 feet south of the south curbline of E. Main St. going south for 95 feet between the hours of 7:00 a.m. and 5:00 p.m., Monday through Friday.
 - (ab) There shall be no parking on the south side of E. Spring St. commencing 885 feet east of the east curbline of N. Madison St. going east for a distance of 470 feet between the hours of 7:30 a.m. and 4:30 p.m. during school days.
 - (bb) Medema Field Loading Zone. One stall as designated by a sign in the off-street parking area on W. Lincoln St. between Rens Way and Pattee Dr. shall be designated as a "Loading Zone" and no parking for purpose other than for the loading or unloading of supplies shall be permitted.
 - (cc) N. Drummond St. Loading Zone. On the west side of N. Drummond St. starting 29 feet north of the intersection of Main St. and going north 152 feet shall be designated as a loading zone to be used as such by persons only while in the process of loading or unloading materials, supplies or persons from or to a motor vehicle. No person may stop or leave any vehicle standing, whether temporary or otherwise, in this space other than for the above purposes.
- (4) Parking shall be permitted at all times on the north side of W. Lincoln St. from west curbline of Beaver Dam St. to a point directly north of the east curbline of Pattee Dr. This ordinance is enacted in accordance with the authority granted under § 346.52(2), Wis. Stats.
- (5) WINTER PARKING.
- (a) For a period of 48 hours immediately following an accumulated snowfall of 2 inches (or more, as measured at the Waupun Safety Building, no person shall park any vehicle on any street or alley in the City of Waupun between the hours of 2:00 a.m. and 6:00 a.m.
 - (b) The restrictions set forth in subsection (a) above shall not apply to Physicians or Emergency Medical Technicians on emergency calls.
 - (c) For a period of 24 hours immediately following an accumulated snowfall of 2 inches or more, as measured at the Waupun Safety Building, no person shall park any vehicle in any City parking lot between the hours of 2:00 a.m. and 6:00 a.m., except the following areas designated as "Overnight Off-Street Parking Areas":
 - 1. The northerly 20 feet of that parking area lying north of 300-312 E Main St., being part of the south half of Lot 4 Block 15 of the Plat of East Waupun to the City.
 - 2. The southerly 60 feet of the east 20 feet of that parking area lying north of 416 E Main St., being part of Lot 1 Block 14 of the Plat of East Waupun to the City.
 - 3. The southerly parking area lying south of the east-west alley running through the 400 block of E. Main St. between Carrington St. and S. Madison St. being a part of the north half of Lot 7, Block 11 of the Plat of East Waupun to the City and being 56 feet in depth and 61 feet in width.
 - 4. The northeast tier and southern tier of parking stalls in the municipal parking lot bordered by S. Mill St. and S. Madison St.
 - (d) With regard to each of the winter time, overnight, off-street parking areas listed in paragraph (c) above, the following parking limitations shall apply:
 - 1. No vehicle shall remain in any such parking space for longer than a 12 hour period.

-
2. No person shall park any vehicle in any parking space between the hours of 8:00 a.m. and 11:00 a.m. for a period of 24 hours immediately following an accumulated snowfall of 2 inches or more, as measured at the Waupun Safety Building.
- (e) The Director of Public Works or, in his absence, any member of the Police Department, may authorize immediate and summary removal of any vehicle parked in violation of these sections and the costs of removal and subsequent storage shall be paid by the owner of the vehicle removed before the vehicle is restored and released to the owner.
- (6) SPECIAL PRIVILEGE PARKING PERMIT.
- (a) May be Issued. Special privilege parking permits may be issued by the Police Department upon application and payment of the permit fee as required herein.
- (b) Parking Privilege. Such permit shall entitle the permittee to park any motor vehicle, upon which a special privilege parking permit is displayed in accordance with paragraph (e) herein, in any space in any off-street parking facility maintained by the City, without complying with time restrictions otherwise imposed, except that holders of these permits shall conform with the wintertime overnight parking restrictions set forth in paragraph (4)(b). In addition, in no event shall any vehicle be kept in any one parking spot for any longer than a 24-hour period. Vehicles must be moved at least once every 24 hours even when a special privilege parking permit is displayed.
- (c) Application. The application shall contain the name and address of the applicant.
- (d) Permit. In addition to the information required in paragraph (c) herein, the permit shall contain the month of issuance. All permits shall expire at midnight on the last day of the month of issue. The color of the permit shall alternate each month. All permits shall be numbered consecutively.
- (e) Permits to be Displayed. Permits shall be placed in the lower right-hand corner of the windshield or in such other conspicuous place as the Police Department may designate while the motor vehicle is in parked position.
- (f) Permit Fees. The special privileges fee shall be \$15.00 per month or \$150.00 per year. However, each business located in the downtown area, which is open for business at least 40 hours per week on a regular basis, shall be entitled to receive 2 parking permits free of charge. Businesses located in the downtown area shall be defined as those located on Main St. between Carrington St. and the railroad right-of-way and those located on the part of Carrington, Fond du Lac, Madison, Mill, Forest and Drummond Sts. south of Franklin St. and north of Jefferson St. The permit shall be used by persons engaged in the operation of the business at the times that the permits are used.
- (g) Revocation, Penalty. The permit of any person who shall violate any of the terms of this section shall be automatically revoked and may not be reinstated without approval of the City Council and the holder thereof shall be subject to the penalties as provided herein.
- (7) RESTRICTED PARKING DURING CERTAIN HOURS. When signs are erected in any block giving notice thereof, no person shall park a vehicle on the east 362 feet of that portion of the south side of E. Main St. lying west of Young St. between 6:00 a.m. and 6:00 p.m.
- (8) PUBLIC LIBRARY PARKING LOT.
- (a) Except as provided in subsection (b) below, no person shall park any motor vehicle or trailer in the public parking lot located adjacent to and immediately south and west of the Public Library, unless such person is using the Public Library at all times during which such vehicle or trailer is parked.
- (b) No person shall park a vehicle for longer than 12 hours in the western most row, the 4 west stalls of the north row, and the 4 west stalls of the south row, all in the parking lot area located adjacent to and immediately west of the Public Library.

(c) Persons violating this subsection shall be subject to the penalties provided in §§ 6.15 and 6.16 of this chapter.

- (9) RESTRICTED PARKING DURING CERTAIN HOURS. No person shall park any vehicle between the hours of 10:00 p.m. and 6:00 a.m. on the north side of E. Jefferson St. from the west curblineline of Shaler Dr. westerly 338 feet.
- (10) SOUTH MILL STREET MUNICIPAL LOT RESTRICTED PARKING. When signs are erected giving notice, no person shall at any time park a vehicle for longer than 3 hours on the S. Mill St. municipal parking lot and adjacent alley.
- (11) CITY HALL LOT RESTRICTED PARKING. No person shall park any motor vehicle or trailer in the municipal parking lot located adjacent to and immediately south of the Waupun City Hall, unless such person is using the City Hall at all times during which such vehicle or trailer is parked. This restriction shall not apply to any vehicle or trailer which is owned or operated by the City of Waupun.
- (12) RESERVED.
- (13) DRUMMOND/FRANKLIN MUNICIPAL LOT. No person shall at any time park a vehicle for longer than 12 hours in the municipal parking lot located adjacent to N. Drummond St. and E. Franklin St.
- (14) CENTRAL WISCONSIN CHRISTIAN SCHOOLS PARKING. The north side of Pleasant Ave. commencing 278 feet west of the intersection of Pleasant Ave. and S. West St. for a distance of 230 feet shall be designated as no parking from 7:30 a.m. to 3:00 p.m. on school days.

(Ord. No. 15-03, § 1, 6-9-2015; Ord. No. 15-04, § 1, 6-9-2015; Ord. No. 15-06, § 1, 7-14-2015; Ord. No. 15-07, § 1, 8-11-2015; Ord. No. 17-03, §§ 1—3, 3-14-2017; Ord. No. 17-12, § 1, 12-12-2017; Ord. No. 17-13, §§ 1, 2, 12-12-2017; Ord. No. 18-07, §§ 1, 2, 10-24-2018; Ord. No. 19-04, §§ 1—6, 6-25-2019; Ord. No. 19-08, § 1, 11-12-2019; Ord. No. 20-05, § 1, 6-9-2020; Ord. No. 20-07, § 1, 8-25-2020; Ord. No. 20-11, § 1, 11-10-2020; Ord. No. 21-01, § 1, 1-12-2021; Ord. No. 21-04, § 1, 8-17-2021; Ord. No. 21-05, § 1, 8-17-2021)

Trista Steinbach

From: Peter Kaczmarski
Sent: Monday, November 28, 2022 8:58 AM
To: Jeff Daane
Subject: Fwd: Construction on Madison st

Please include this letter with my letter and pictures in the December DPW agenda.

Get [Outlook for iOS](#)

From: johnstna@msn.com <johnstna@msn.com>
Sent: Wednesday, November 2, 2022 6:26:12 PM
To: Peter Kaczmarski <pkaczmarski@cityofwaupun.org>
Subject: Construction on Madison st

Good evening Pete,

My fiancé told me that someone was walking door to door to get feedback about the construction. I hope you are the person I need to contact about my thoughts.

First off, I do not understand why they shifted the cross walk down. We now have 3-4 crosswalks.

Also, I do not understand why we need so much no parking. I can't even park in front of my own house. So now when I have guests visiting they have to either park in front of neighbors or park a block away. There has never been a parking issue on S. Madsion st. This is going to be a serious issue next spring for the Easter Egg hunt at Dodge Park.

I am Unable to attend next week's meeting.

Thank you for your time.

Nate Johnston
555 S. Madsion St.

Trista Steinbach

From: Peter Kaczmariski <kaczp@sbcglobal.net>
Sent: Monday, November 28, 2022 8:53 AM
To: Jeff Daane; Peter Kaczmariski
Subject: Parking restrictions for South Madison Street

To Whom It May Concern,

My name is Pete Kaczmariski and have lived at 640 South Madison Street for 34 years. I have seen many issues during my time living here. I have received an Associate Degree in Police Science from Fox Valley Technical College. Part of that program was studying road and safety design. After that, I was successful in completing the Certified Police Officer program. I was hired as a 911 Dispatcher for Dodge County Sheriff's Department, worked there for 33 years, and retired in 2020. I'm currently in my 13th. year as an Alderman for the second ward in the City of Waupun. The intent of this letter is to show a "commonsense" approach to an Engineer in Madison's decision here in Waupun.

In 1985 South Madison Street had a complete rebuild to include water, sewer, and blacktop pavement. Three years ago the street project was broken up into two build years. During a public hearing, outlining the project, the parking restrictions were never disclosed. The year before that North Madison Street had a complete rebuild which is relevant later on. Pictures of targeted areas will be included and referenced in this letter.

Nine homes have had all parking taken away in front of their homes in a two-block stretch of South Madison Street. I have personally measured the yellow marked lines. The email from the State Engineer states he recommends 20 feet as no parking from a crosswalk. This will show that the distance is greater than the recommended distance. The following are the listed homes in numerical order.

555 South Madison Street: 48' from the driveway to the crosswalk.

559 South Madison Street: 40' from the crosswalk to the next crosswalk.

602 South Madison Street: 38' from the crosswalk to the next crosswalk.

608 South Madison Street: 61' from the crosswalk to the next crosswalk and 18' from the crosswalk to the South.

605 South Madison Street: 50' from the crosswalk to the end of yellow by the fire hydrant. (City ordinance says 7.5' from each side of the fire hydrant for a total of 15')

641 South Madison Street: 70' from the crosswalk to the next crosswalk.

638/640 South Madison Street: 52' from the crosswalk to the next crosswalk.

701 South Madison Street: 28' from the crosswalk to the driveway of the home. The distance between the driveway to the South of the fire hydrant is 13'.

The next picture is of Doty Street West, it is a truck route leading to several semi-driven businesses including the State of Wisconsin Warehouse. I have counted 30 semi's going both directions on Doty Street on a weekday and I quit counting at 11:00 a.m. Why is this relevant? Some people are now parking on Doty Street West because they cannot park in front of their own home. This street is 32' wide and you can see cars parking on both sides of the street. For people choosing to park on Doty Street East because of not being able to park in front of their home. That street is even more narrow at 28' wide.

You will hear comparisons to other streets in the city, especially West Main Street but that street is a State Highway (higher traffic volume), and South Madison Street is not.

A reference will be made that this excessive distance was necessary on South Madison Street because it is a "T" Intersection. Remember North Madison Street was done recently, just before South Madison Street. The last picture is of North Madison Street at Monroe Street. It is marked in yellow 14' from the crosswalk to the North (white SUV), 12' from the driveway South to the crosswalk, and 14' from the crosswalk South. These are all on the East Side of the Street.

Both North and South Madison Street are the same, a 50' wide street. I requested auto accidents from the Police Department from 555-701 South Madison Street going back to 2020 and there were none. So if it was not a traffic problem for years, not causing accidents then why is it a problem now, inconveniencing nine homeowners in a two-block stretch? Also, I have observed Police Officers observing traffic (radar) in the middle of Dodge Park area of the street. If they want to do the same South of 555 South Madison Street will be more difficult with no parking in front of nine homes. Also, the use of the Police Radar Trailer will be limited as it could not be parked in front of nine homes.

I'm asking for a review of these parking restrictions for the nine homeowners that when all factors are considered, bring a more "Commonsense" approach to this now and in the future.



Virus-free. www.avg.com







To: Jeff Daane <jeff@cityofwaupun.org>

Cc: Heath Hagner <Heath.Hagner@isginc.com>; Shawn Demers <Shawn.Demers@ISGInc.com>; Thomas Lanser <T.Lanser@gremmerassociates.com>

Subject: RE: 6998-05-05 Pavement Marking

Jeff,

The limits of parking were established by the parameters set in the Wisconsin State Statutes, Wisconsin Manual on Uniform Traffic Control Devices (WMUTCD), Federal Highway Administration Manual on Uniform Traffic Control Devices (MUTCD), and Uniform Vehicle Code (UCV).

UVC Section 11-1003 Stopping, standing, or parking prohibited in specified places states the following:

11-1003(a)1.C. Within an intersection

11-1003(a)2 Stand or park a vehicle, whether occupied or not, except momentarily to pick up or discharge a passenger or passengers:

A. In front of a public or private driveway;

B. Within 15 feet of a fire hydrant;

C. Within 20 feet of a crosswalk at an intersection;

D. Within 30 feet of any flashing signal, stop sign, yield sign or traffic control signal located at the side of a roadway.

E. Within 20 feet of the driveway entrance to any fire station and on the side of a street opposite the entrance to any fire station within 75 feet of the entrance (when properly sign posted);

F. At any place where official traffic control devices prohibit standing.

WMUTCD Section 3B.19 Parking Space Markings states the following:

Wisconsin State Statutes 346.51 to 346.55 describe provisions for standing, stopping and parking. Figure 3B-21 shows parking prohibited for a distance of 20 to 30 feet from the near limits of a crosswalk.

Wisconsin State Statute 346.53(5) restricts parking no closer than 15 feet to the near limits of any crosswalk. This limitation would apply on the approach to a traffic signal as well, but in usual practice, prohibitions of up to 100 feet are common on the approach to a signal where the approach is one lane plus parking or otherwise restricted such that provisions need to be made to allow through traffic to bypass left turning traffic thereby increasing intersection efficiency.

Wisconsin State Statute 346.52 Stopping prohibited in certain specified places states the following:

(1) No person may stop or leave standing any vehicle, whether attended or unattended or whether temporarily or otherwise, in any of the following places:

(a) Within an intersection.

Wisconsin State Statute 346.53 Parking prohibited in certain specified places states the following:

No person shall stop or leave any vehicle standing in any of the following places except temporarily for the purpose of and while actually engaged in loading or unloading or in receiving or discharging passengers and while the vehicle is attended by a licensed operator so that it may promptly be moved in case of an emergency or to avoid obstruction of traffic:

(1) In a loading zone.

(2) In an alley in a business district.

(3) Within 10 feet of a fire hydrant, unless a greater distance is indicated by an official traffic sign.

(4) Within 4 feet of the entrance to an alley or a private road or driveway.

(5) Closer than 15 feet to the near limits of a crosswalk.

(6) Upon any portion of a highway where and at the time when parking is prohibited, limited or restricted by official traffic signs.

There are some slight differences in the distances from hydrants and crosswalks between the reference documents. Generally speaking, we designed the pavement marking to restrict parking within the limits of an intersection, within 20-feet of a crosswalk and within 10-feet of a fire hydrant. Please let me know if you have any further questions or would like to discuss specific areas in more detail.

Thanks,
Jeff

Jeffrey A. Chvosta, PE

Project Engineer

E: j.chvosta@gremmerassociates.com

O: (920) 924-5720

W: www.gremmerassociates.com



93 S. Pioneer Road, Suite 300
Fond du Lac, WI 54935

Hi Jeff,

As we had discussed, this project is in the Surface Transportation Projects-Urban program. This is a federally funded program and the designers for the project would have followed federal guidelines. For setting up signing and marking, they Manual on Uniform Traffic Control Devices (MUTCD) would have been used to determine spacing of signs, where no parking zones are put, and other features. The Facilities Development Manual (FDM) is also used for determining safety features like corner clearance at intersections.

If you would like to do even more digging, state law would also apply as we need to follow Trans 206. Trans 206 also references these manuals.

- **(9) STANDARDS.** All municipal street improvement projects funded under this chapter shall be designed and constructed using the state standards as described in the department's facility development manual procedure 11-20-1 except as provided in s. [Trans 206.03 \(13\)](#).

See link: https://docs.legis.wisconsin.gov/code/admin_code/trans/206

From: Jeff Daane <jeff@cityofwaupun.org>

Sent: Thursday, November 10, 2022 8:45 AM

To: Pearson, Zachary L - DOT <Zachary.Pearson@dot.wi.gov>

Subject: FW: 6998-05-05 Pavement Marking

From: Shawn Demers <Shawn.Demers@ISGInc.com>
Sent: Tuesday, October 18, 2022 8:49 AM
To: Jeff Daane <jeff@cityofwaupun.org>
Cc: Heath Hagner <Heath.Hagner@isginc.com>
Subject: 6998-05-05 Pavement Marking

Good morning Jeff,

The Manual on Uniform Traffic Control Devices (MUTCD) that the DOT uses, references the Uniform Vehicle Code (UVC) for traffic laws throughout the United States. Within the UVC it states parking is prohibited within an intersection (Sec. 11-1003.a.1.C) and within 20' of a crosswalk at an intersection (Sec. 11-1003.a.2.C).

Since we didn't design this project, we can only assume these were the regulations that were followed.

If you have further questions regarding the design please reach out to the designer Jeffrey Chvosta with Gremmer & Associates, Inc. at j.chvosta@gremmerassociates.com.

Thanks,



Shawn Demers
Graduate Engineer
Employee Owner

P 608.789.2034

E Shawn.Demers@ISGInc.com

A 201 Main Street + Suite 1020 + La Crosse, WI 54601

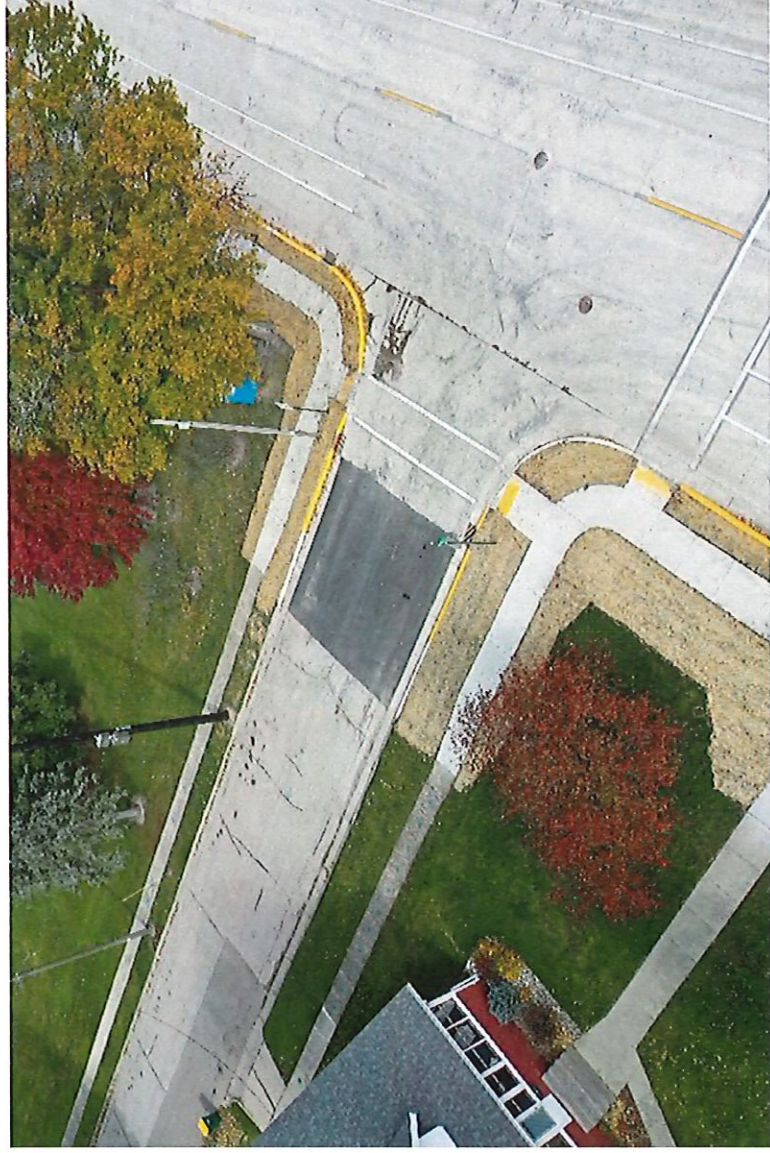
W ISGInc.com



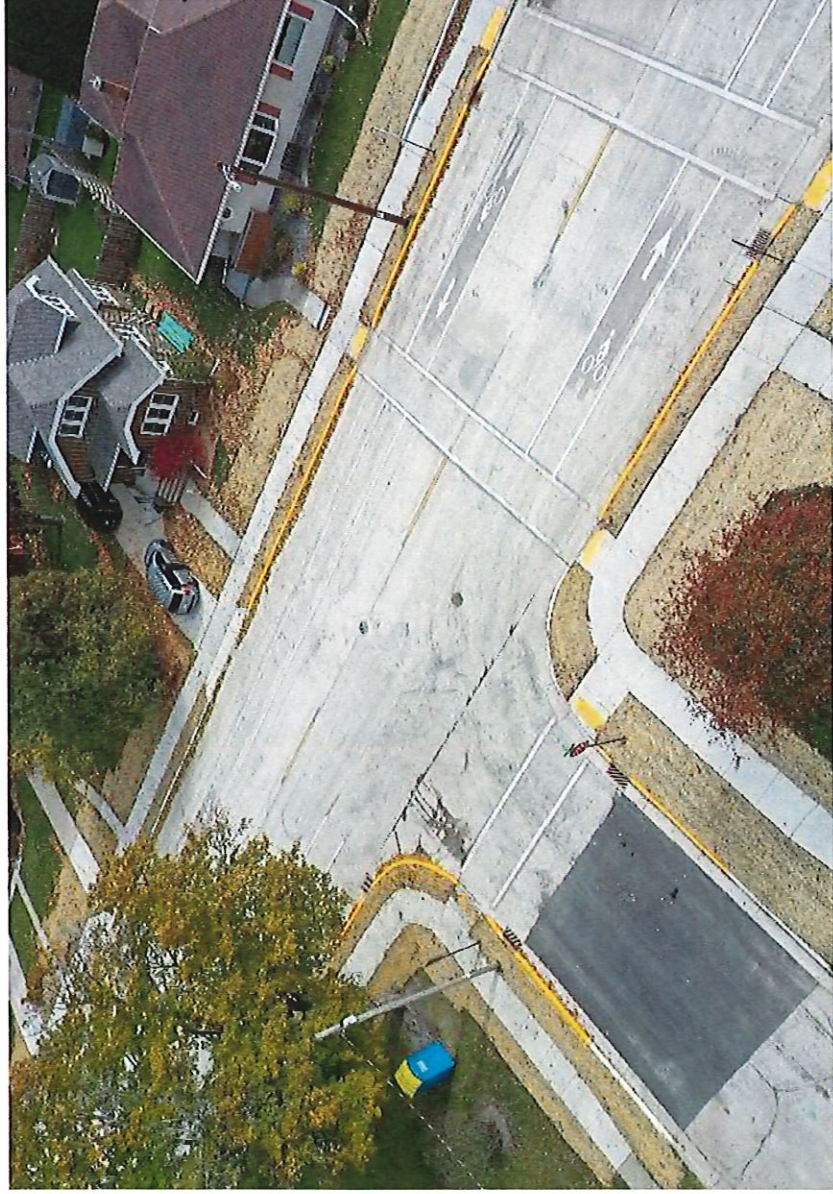
South Madison Street Parking Restrictions



Intersection of South Madison and Park Street



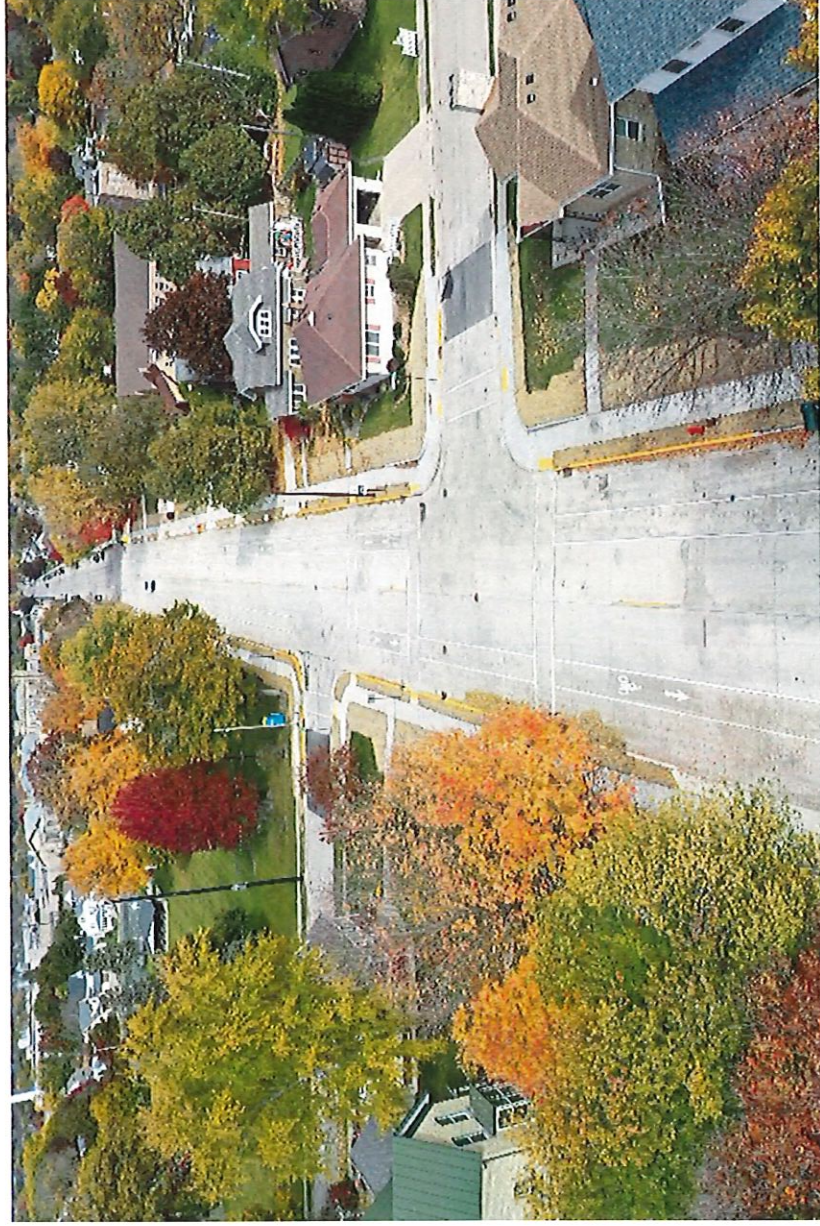
555 and 559 South Madison Street



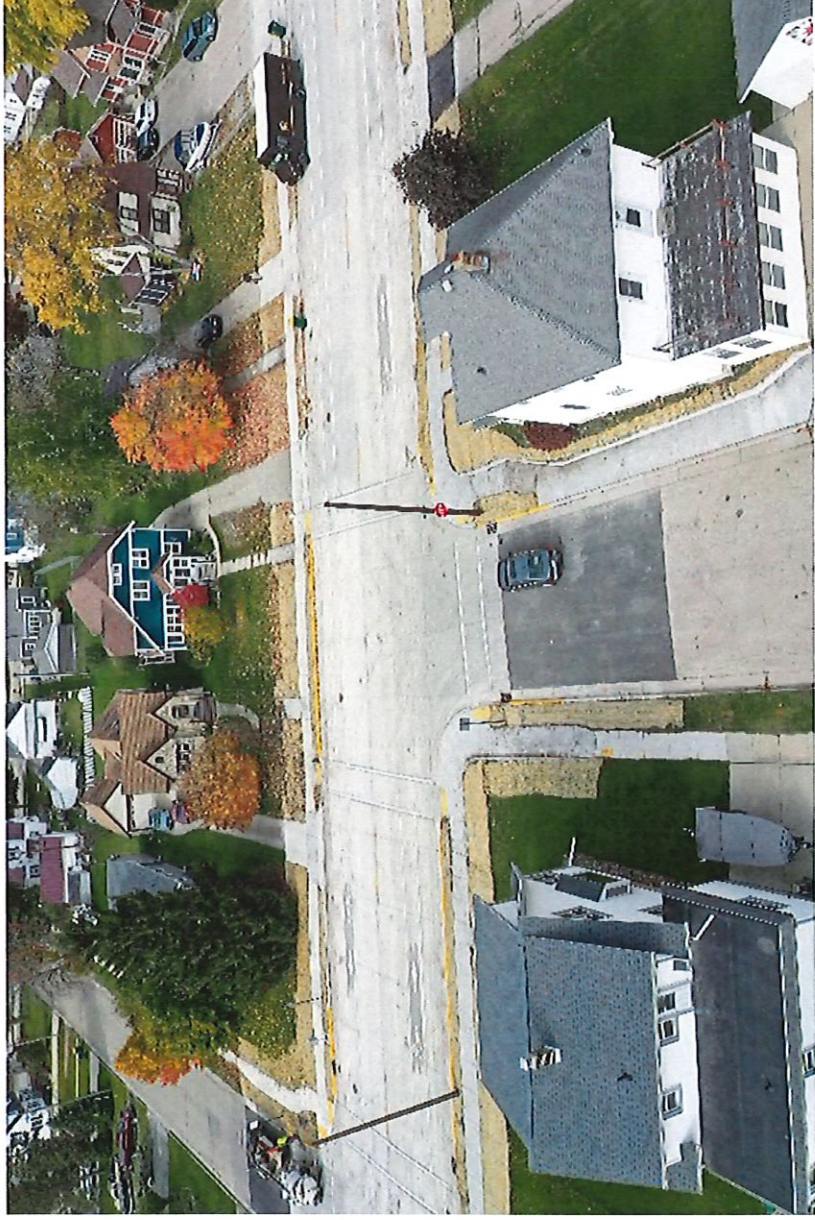
602 South Madison Street



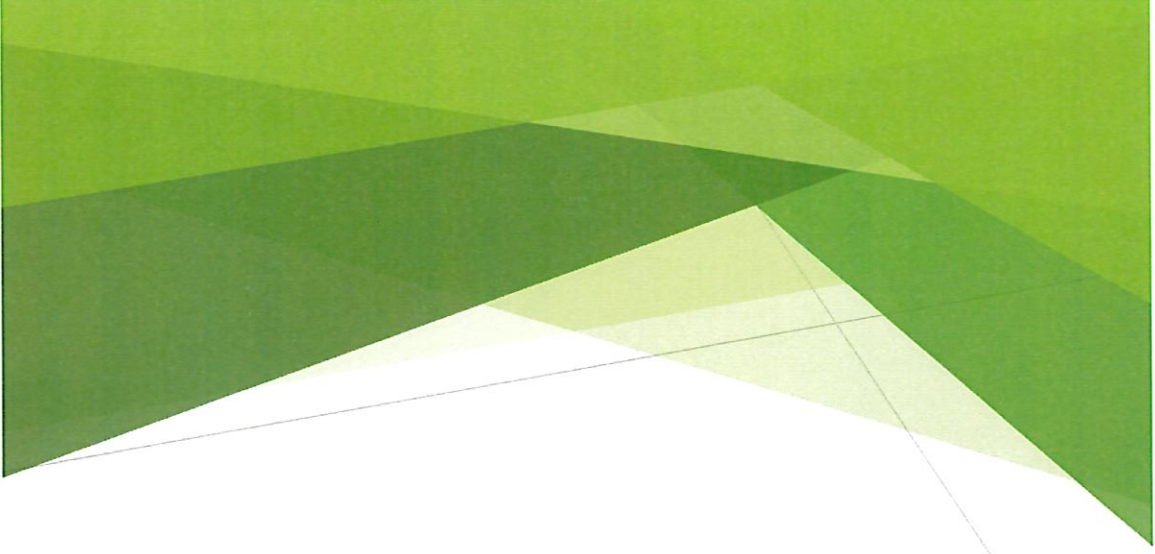
605 South Madison Street



638 and 640 South Madison Street



641 South Madison Street



701 South Madison Street



Madison Street Project Final Video





AGENDA SUMMARY SHEET

MEETING DATE: December 12, 2022

TITLE: 5 year street plan

AGENDA SECTION: Consideration/Action

PRESENTER: Jeff Daane

| DEPARMTENT GOAL(S) SUPPORTED <i>(if applicable)</i> | FISCAL IMPACT | |
|---|---------------|--|
| | | |

ISSUE SUMMARY

Each year after street projects are complete the City updates the 5 year street plan. We have had conversations with the Waupun Utilities on this plan and they are in agreement. There are a couple streets we will look into in more detail as we get closer.

This plan is also updated yearly so the city can then use this when applying for grants and any other funding opportunities.

STAFF RECCOMENDATION:

Approve updated street plan

ATTACHMENTS:

5 year Street plan summary sheet

RECCOMENDED MOTION:

1. Approve 5 year street plan.

| City of Waupun | | | | | | | | | | |
|--|--|-----------------------|-----------------------|--------------------------|--------------------|---|----------------|-----------------|-------|---|
| Long Range Street Plan w/ Proposed Funding | | | | | | | | | | |
| 12/6/2022 | | | | | | | | | | |
| Year | Street | Construction | | | | Mill & Overlay | | | Total | Funding |
| | | Estimated Street Cost | Estimated Storm Water | Construction Engineering | Design Engineering | Street | Estimated Cost | | | |
| 2023 | | \$ - | \$ - | \$ - | \$ - | Taylor St (Howard to Brandon) Rens Way (Fox Lake to W Lincoln) Parking Lot (Community Center - repair) Wilcox St (Washington to S Grove) Railroad Tracks (Main St) | \$ 285,055.28 | \$ 285,055.28 | | |
| 2024 | None (Design Engineering for 2025 Construction projects) | \$ - | \$ - | \$ - | \$ 52,470.36 | Gateway Dr (Hwy 26 to Kelly) Grace St (Beaver Dam to Hillyer) Confirm Utilities Grandview (S State to S Division) Alley (N Division to N State) | \$ 246,625.90 | \$ 299,096.26 | | Pay-As-You-Go |
| 2025 | Newton Ave (Rock Ave to N Harris) Rock Ave (Newton Ave to N Harris) Rock Ave (CTH M to Newton/Rock) | \$ 911,178.00 | \$ 328,024.08 | \$ 272,624.46 | \$ - | | | \$ 1,511,826.54 | | Debt Financing / Pay-As-You-Go / \$400,000 LRIP Grant |
| 2026 | Alley (N Mill to N Madison) Design Engineering for 2027 projects) | \$ 234,380.00 | \$ - | \$ - | \$ 60,821.17 | STH 26 (Doty to Barnes) DOT Project Parking Lot across from Community Center Parking Lot - Schlieve Field Sunset Ct | \$ 241,762.96 | \$ 536,964.13 | | |
| 2027 | N Grove (Park to Franklin) Roosevelt St (N Grove to N Watertown) Park St (N Grove to N Watertown) Franklin St Young St (Wilcox to Main) W. Jefferson St (S Harris to Liberty) Sawyer St (S Grove to Termini) River St (Pioneer to Rock River Ave) E. Jefferson St (S. Watertown to S Grove) Wilcox Ct (Wilcox St. to Termini) | \$ 2,241,343.52 | \$ 953,257.10 | \$ 702,812.14 | \$ - | S West St (W Lincoln to Visser) W Brown St (County Park Rd to Termini) River Rd (E Spring to Frontage Rd) W Brown St (Beaver Dam to RR Tracks) Utilities may need to do work here | \$ 255,215.92 | \$ 4,152,628.68 | | Debt Financing |