



BOARD OF COMMISSIONERS CALLED MEETING

Tuesday, May 16, 2023 at 5:00 PM

Historic Walton County Courthouse, 111 South Broad Street, Monroe Georgia

Phone: 770-267-1301 | Fax: 770-267-1400

AGENDA

1. MEETING OPENING

- 1.1. Pledge of Allegiance & Invocation
- 1.2. Call to Order
- 1.3. Roll Call

2. ADOPTION OF AGENDA

- 2.1. Additions/Deletions

3. FINANCE

- 3.1. Public Hearing - FY24 Budget

4. PRESENTATIONS

- 4.1. Hard Labor Creek Reservoir Recreational Area Grant Application - John Ward - County Manager

5. RESOLUTIONS

- 5.1. Resolution - Pre-application Funding for HLCR Recreational Area (Land & Water Conservation Fund)
- 5.2. Resolution - Supplemental Resolution to approve the final terms for the Walton Co. Public Facilities Authority (Ga.) Revenue Bonds (Walton Co. Projects), Series 2023 and other related items
- 5.3. Resolution - Capital Improvements Element Transmittal - Impact Fee Program

6. ANNOUNCEMENTS

7. ADJOURNMENT

If you are an individual with a disability and require special assistance at this meeting, please contact our office at 770-267-1301 and arrangements will be made.

People wanting to make a Public Comment before the Board of Commissioners must complete the form at the link below and return it to the County Clerk no later than 4:00 PM the day prior to the meeting. You may email, fax, mail or deliver the form.

<http://www.waltoncountyga.gov/Clerk/Public%20Comment%20Form.pdf>

For more information, please contact Rhonda Hawk.

Hard Labor Creek Reservoir Recreational Area



Land and Water Conservation Fund
(LWCF)

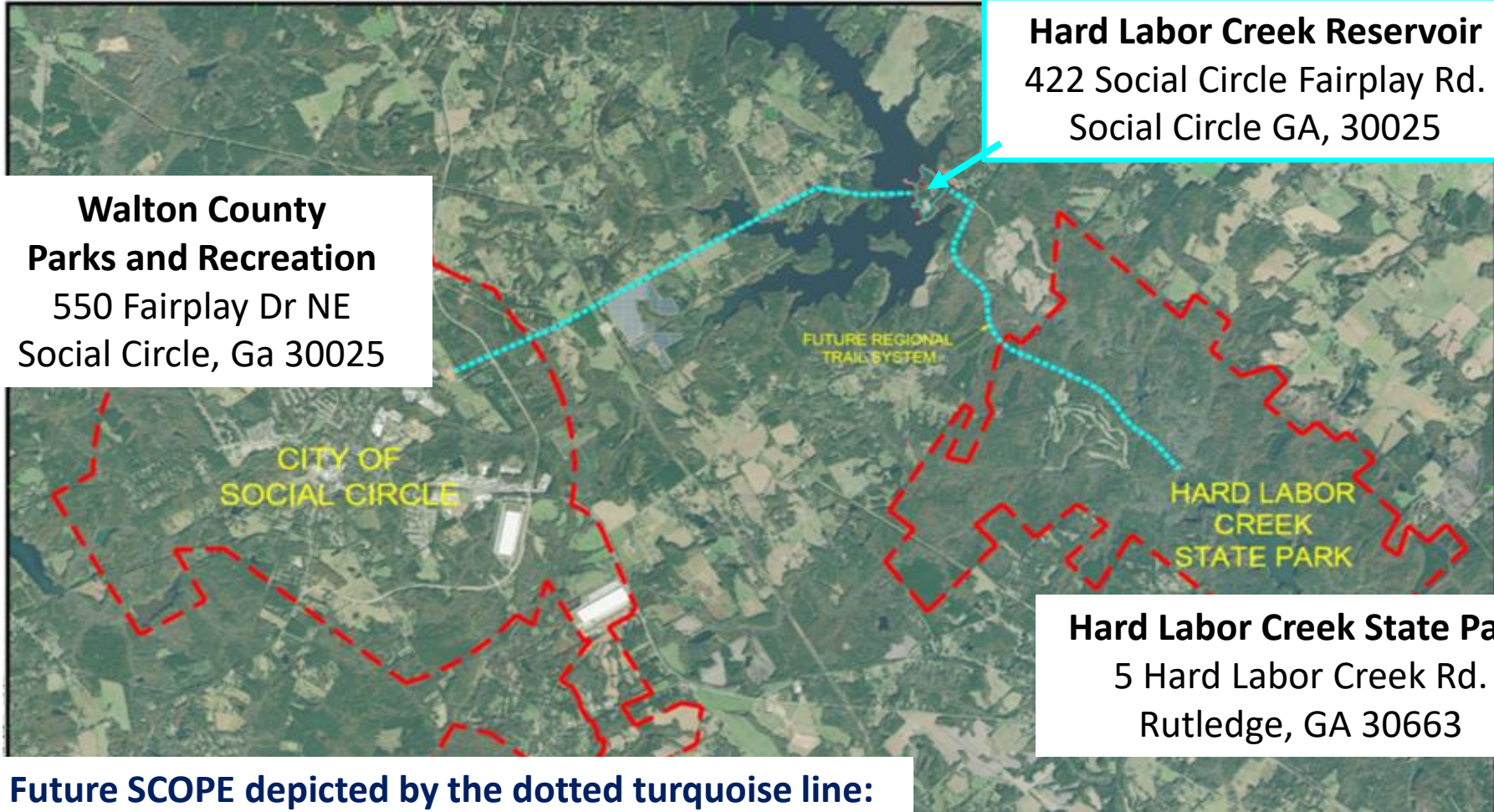
Grant Application

Scope





Hard Labor Creek Reservoir Recreational Area



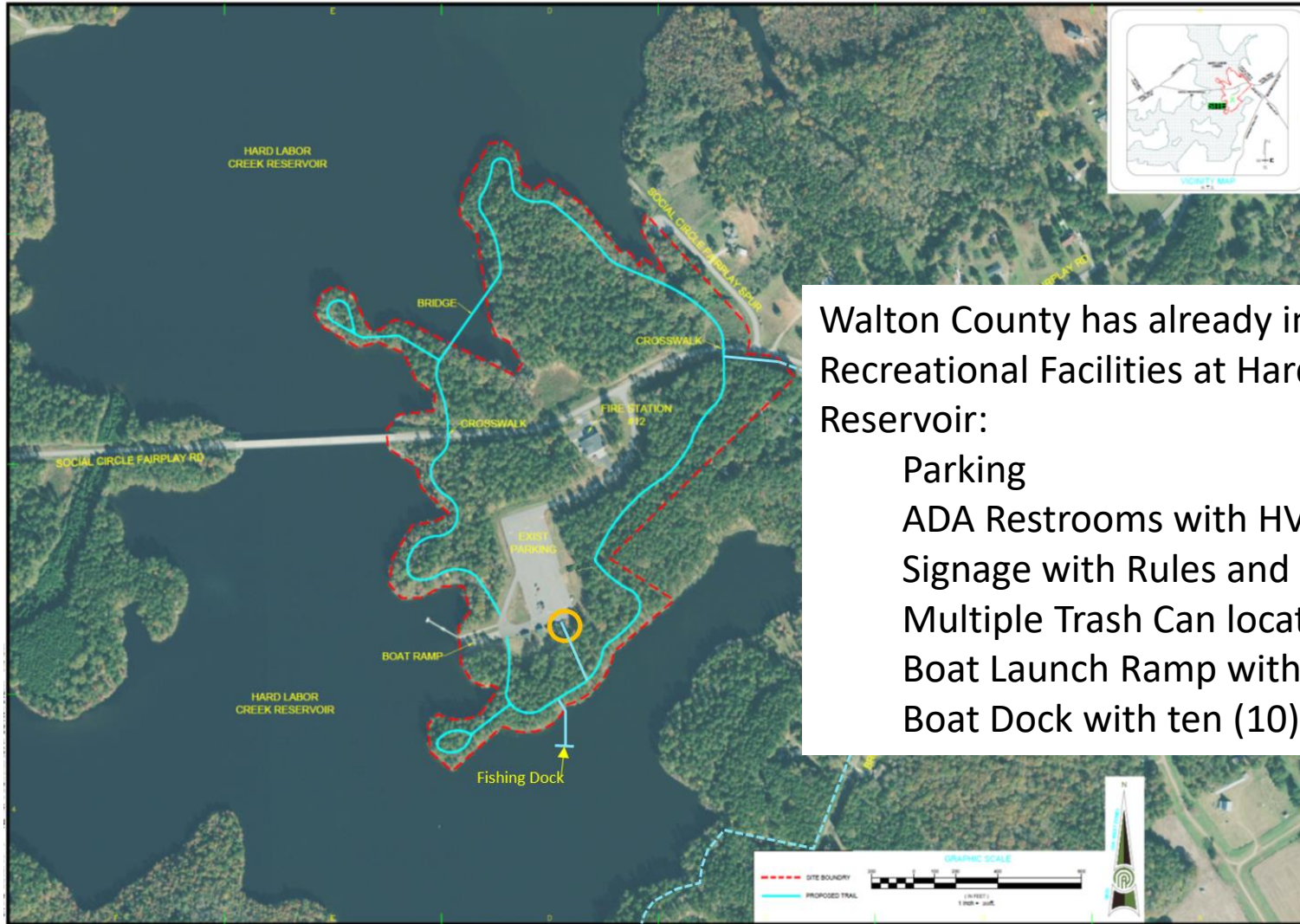
**Walton County
Parks and Recreation**
550 Fairplay Dr NE
Social Circle, Ga 30025

Hard Labor Creek Reservoir
422 Social Circle Fairplay Rd.
Social Circle GA, 30025

Hard Labor Creek State Park
5 Hard Labor Creek Rd.
Rutledge, GA 30663

Future SCOPE depicted by the dotted turquoise line:
Develop a Recreational Trail approximately thirteen (13) miles long.
Recreational Trail connects the existing Walton Parks and Recreation and the Hard Labor
Creek State Park. The Hard Labor Creek Reservoir is positioned in the middle of this Trail.

Hard Labor Creek Reservoir Recreational Area



Walton County has already invested in the following Recreational Facilities at Hard Labor Creek Reservoir:

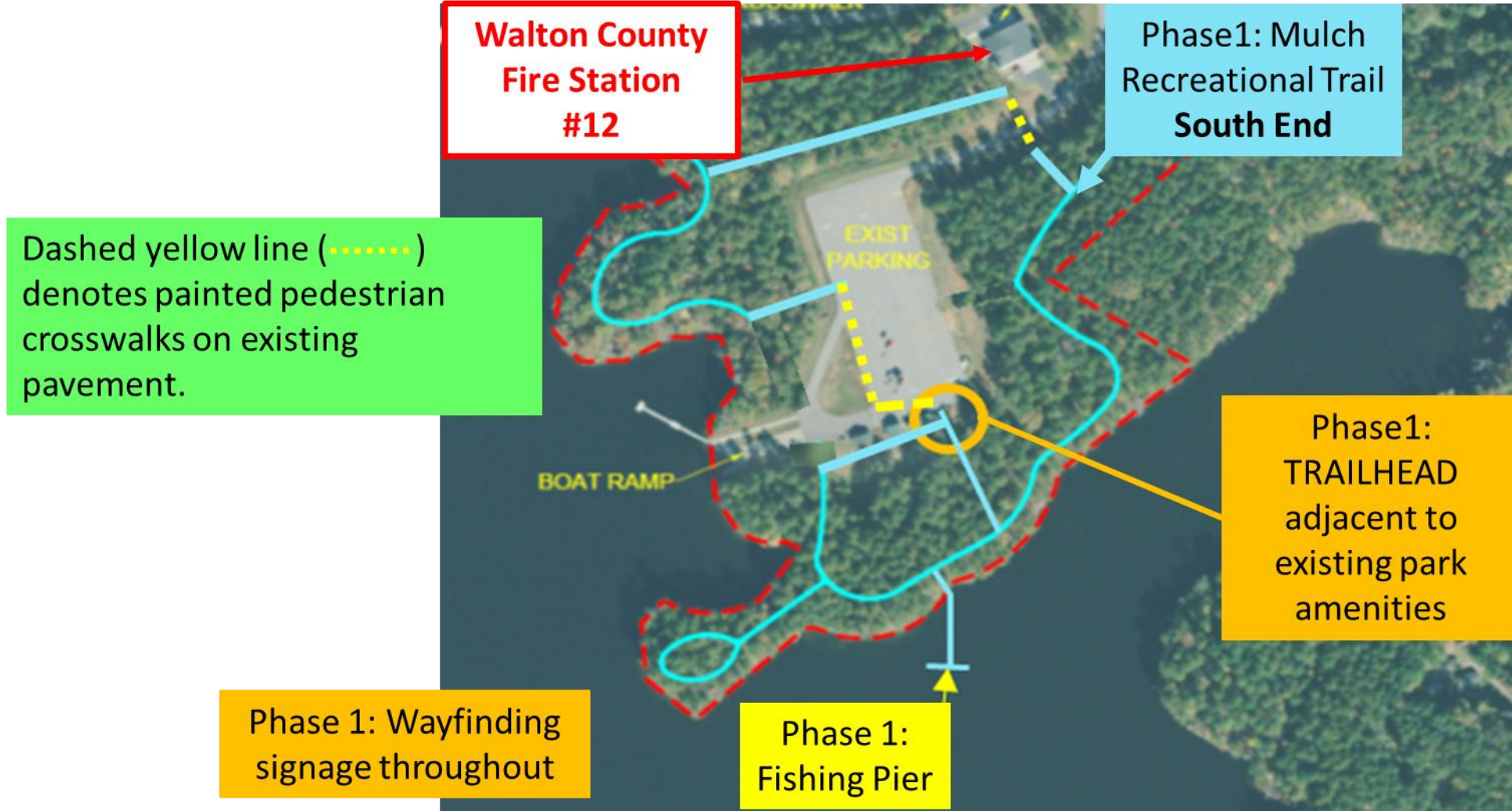
- Parking
- ADA Restrooms with HVAC
- Signage with Rules and Parking Collection
- Multiple Trash Can locations
- Boat Launch Ramp with Kayak/Canoe access
- Boat Dock with ten (10) mooring posts

The entire proposed Recreational Trail System (dotted turquoise line) is within the boundary (red line) of the Walton County Water and Sewer Board, as well as the Walton County Fire Station #12.



Hard Labor Creek Reservoir Recreational Area

Phase1: Recreational mulch Trail with Fishing Pier



Land and Water Conservation Fund (LWCF) Grant Application Scope



Hard Labor Creek Reservoir Recreational Area

Proposed Recreational Trailhead and existing Park facilities



Proposed
Trailhead
KIOSK Cover;
Group Meeting
Location



Park
Maintenance
Building

Two (2) ADA Public
Restrooms with water
fountain and HVAC

Signage for Boat Ramp
Rules and Parking Permits

Land and Water Conservation Fund (LWCF) Grant Application Scope

View of rear of ADA Public Restroom Facility and Walton County Water Rescue Building and Proposed Recreational TRAILHEAD structure – Turquoise arrow..



Propose Traditional Kiosk in the TRAILHEAD structure, for Phase 1.



Hard Labor Creek Reservoir Recreational Area

In summary, the completion of this project will open the current Hard Labor Creek Reservoir boat launch facilities to pedestrian traffic.

The establishment of the recreational trailhead will serve as a group meeting place away safely away from vehicular traffic.

The fishing pier will allow the public safe access to fish away from boat traffic.

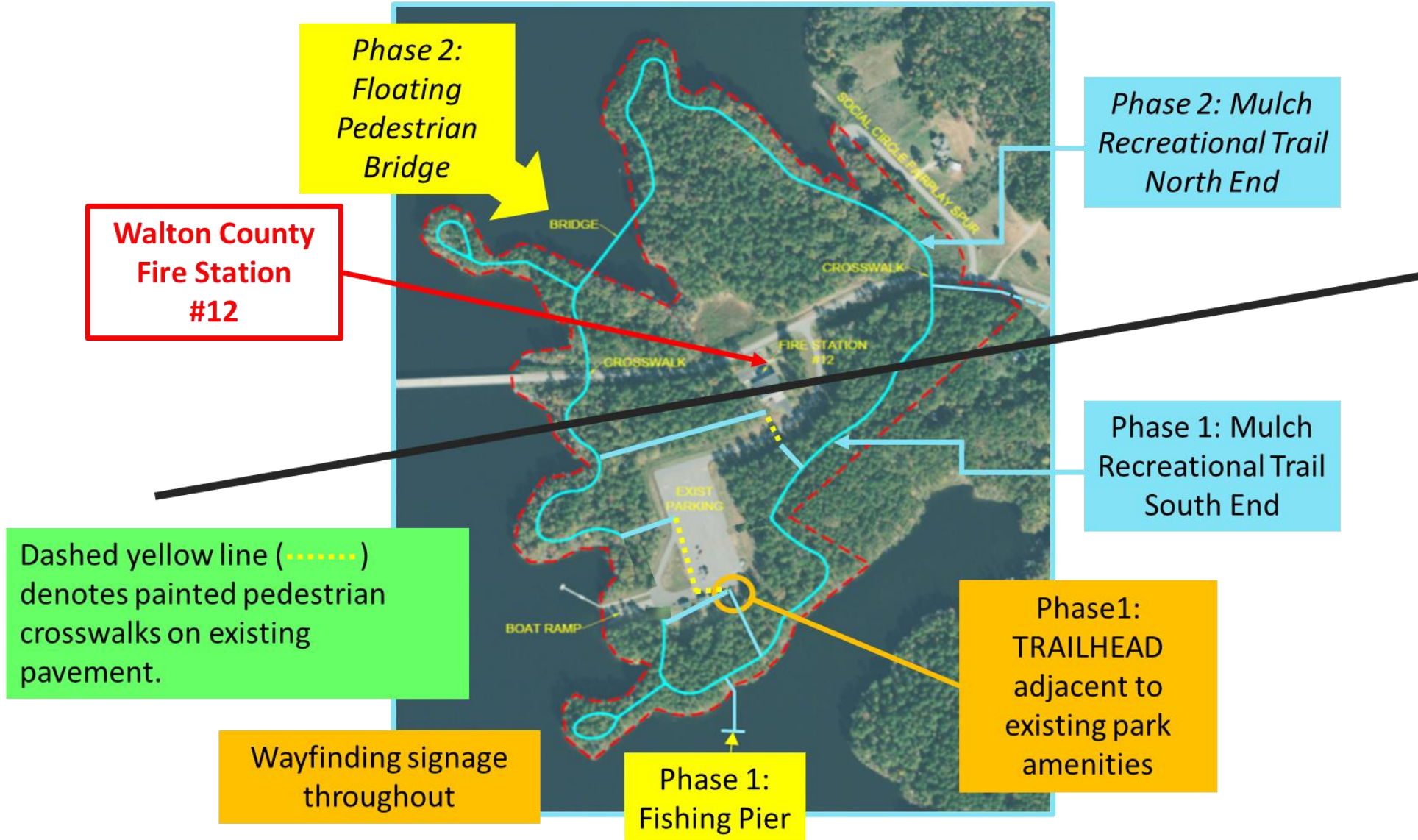


South end of proposed trail with destination feature of fishing dock.



Hard Labor Creek Reservoir Recreational Area

Phase 1 and Phase 2: Recreational mulch Trail with destination locations: Fishing Pier and Floating Pedestrian Bridge



Land and Water Conservation Fund (LWCF) Grant Application Scope



Hard Labor Creek Reservoir Recreational Area

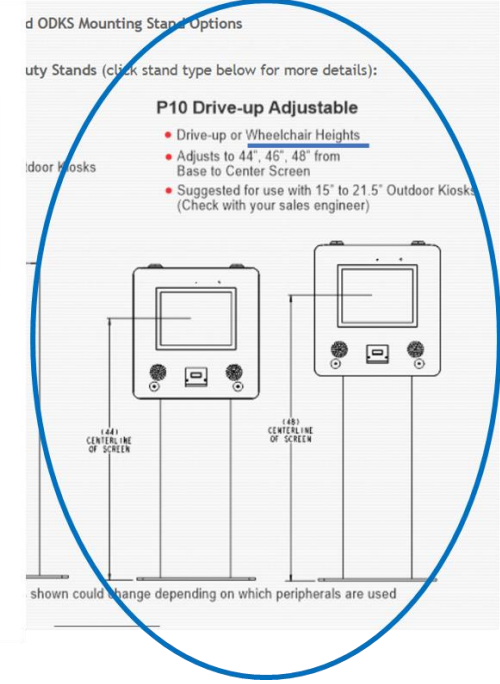
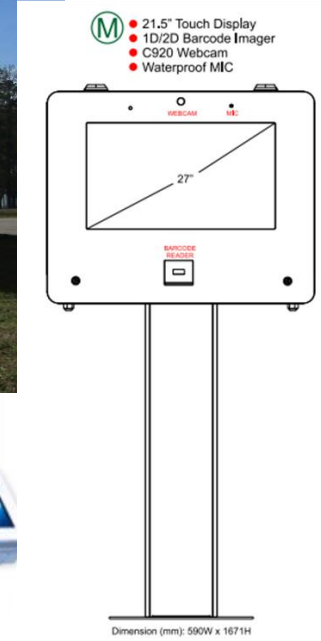
Phase 2:

- Develop the north end recreational trail with floating pedestrian bridge.
- Connect the south and north ends via raised pedestrian crosswalks, and
- Enhance the Trailhead and Recreational Trail communication with interactive kiosks/wildlife posts.



Phase 2: North end of proposed trail with destination feature of pedestrian bridge.

View of rear of ADA Public Restroom Facility and Walton County Water Rescue Building and Proposed Recreational TRAILHEAD structure – Turquoise arrow..



Phase 2: enhance current Traditional Kiosk with State of the Art (electronic) Kiosk in the TRAILHEAD structure.



Hard Labor Creek Reservoir Recreational Area

Phase 2: Pedestrian Crosswalks to connect South and North ends



East
Cross Walk

West
Cross Walk



Fire Station #12





Hard Labor Creek Reservoir Recreational Area

Phase 2:

Two (2) pedestrian crosswalks – East and West of the Walton County Fire Station #12 – Social Circle Fairplay Rd. Walton County, GA.



PEDESTRIAN CROSSING SYSTEMS

ELTEC's Pedestrian Crossing System is designed to alert approaching motorists that a crosswalk is occupied.

ELTEC's Pedestrian Crossing System may be integrated for AC or solar power. All ELTEC solar powered systems never dim any signal during the day, maintaining the beacon's effectiveness and the warning system's integrity.

APPLICATIONS

- Jogging/Running Paths
- Hiking Trails
- Horse Trails
- Cyclist Crossings
- Golf Cart Crossings
- Middle-of-the-Block Crosswalks



Rural Bike and Pedestrian Crossing

ELTEC manufactures three mid-block pedestrian crossings:

- Standard: single or dual round amber signals per pole
- RRFB: Rectangular Rapid Flashing Beacon
- HAWK (hybrid): High Intensity Activated CrossWalk

Every ELTEC pedestrian crossing system is designed and manufactured to individual project specifications. Each solar powered system takes into consideration geographic location and system loads. On solar powered systems, ELTEC does not agree with the "one size fits all" philosophy.

Activation of the flashing signal(s) is initiated with a pedestrian push button, motion sensor, or camera. Our wireless radio communication eliminates the need to run conduit for hard-wiring. Once activated, the signals remain ON for an adjustable pre-set time period as determined by the signal technician.

ELTEC's wireless system can turn ON multiple signals from one activation point including medians or advance warnings. Each programmable transceiver is linked to one or more poles creating an isolated network with no "cross talk".

All ELTEC systems meet the Federal Highway Administration's MUTCD (Manual on Uniform Traffic Control Devices) and ITE (Institute of Transportation Engineers) standards.



Standard and Hawk
Mid-block Pedestrian Crossings



RRFB with
Pedestrian Verification Light

A typical system includes two or more poles with mounted beacon(s), RRFB light bar, or the HAWK crossing hybrid beacon face. Each pole supports a small cabinet housing the electronics with pre-assembled wiring for easy installation. If the unit is solar powered, a charge controller and battery are included, and a solar panel with a rack is mounted on each pole.

STANDARD FEATURES

- AC or Solar Powered
- Activation Options: pedestrian push button, motion sensor, camera
- System Flexibility: tailored to meet project requirements
- Programmable Timed Crossing
- No Trenching or Boring Cable with Wireless System
- 8" or 12" Amber Signal Heads: 1 or 2 per pole
- RRFB Light Bar
- Hybrid Beacon with Mikros EIC DC Controller
- Optional Night Dimming
- AC: optional battery back-up
- Meets MUTCD and ITE Standards

When AC power is not available or practical, solar power is the solution. ELTEC's solar powered pedestrian crossings are sized for geographic location including average weather conditions, number of crossings (activation time), and electrical load for optimal effectiveness guaranteeing sufficient power for the flashing beacons throughout the year. As specified by the FHWA, "it is not acceptable to dim signal indications or flashing beacons during daytime conditions...."

ADDITIONAL FEATURES for SOLAR POWERED SYSTEMS

- No Electrical Bills: self-contained
- No Power Interruption
- Electrical Contractors Not Required for Installation
- Solar Panel Mounting Rack Options: side or top-of-pole
- Self Cleaning Solar Panels Warranted for 20 Years
- No Maintenance AGM Sealed Batteries
- Controller with Display Showing Battery Voltage, Solar Amps, and Load Amps
- Solid State Flasher (FS-2 or FS-2B) or Mikros EIC for Hybrid Flash Pattern
- Sized by Computer Program: ensures power generated exceeds load requirements
- 12 Month Solar Sizing Report Supplied (no charge) with Each Project
- Flash Rate is Constant at Selected Rate: does not vary as a function of battery voltage

For more information or a quotation, contact ELTEC or your local ELTEC Dealer

Local Dealer Information: Mr. Bradford Berner – brad@tsandl.us – 800-216-4044 ext. 710 [cell: 954-224-1402].



Mid-block Crossing with Island



Wrap-around RRFB Light Bar
with Required Signage



ELECTROTECHNICS CORPORATION
1310 Commerce Street, Marshall, TX 75672 • 800-227-1734 903-938-1901 Fax 903-938-1977
sales@elteccorp.com

Rev. 0214



Hard Labor Creek Reservoir *proposed* Recreational Area

LWCF – Grant Constraints:

- *dollar for dollar match – reimburseable only*
- *design/engineering – no more than 10% of budget costs*
- **Maximum Award - \$500,000 (with matching funds \$1M – total project)**

Walton County Cost Estimate:

Hard Labor Creek Reservoir Recreational Area

Total Development:

Recreational Trail:

Site Preparation Grading/Equipment	86,000
Site Final Grade/Material/Equipment	237,000
Site Final Grade/Labor	166,000
Trailhead	72,000
Wayfinding	14,000

Fishing Pier

Materials/Construction	328,000
------------------------	---------

Total Budgeted Costs	903,000
Total "In-Kind" Costs	97,000
TOTAL Project Costs	1,000,000



2023-__

Board of Commissioners, Walton County Georgia

Resolution – Pre-application for

Funding the Land and Water Conservation Fund

WHEREAS, at the regular meeting of the Walton County Board of County Commissioners, Walton County, Georgia, held on **Tuesday, _____, 2023**, a motion was made and duly seconded that the County of Walton agrees to submit a Pre-application for the funding from the Land and Water Conservation Fund (LWCF). The County of Walton further agrees that in the event the County of Walton’s pre-application is recommended for funding by the Department of Natural Resources, the County of Walton certifies and assures that it has the **ability** and **intention** to finance their fifty (50%) percent of the total project cost and will move forward with due diligence to prepare, or have prepared, appropriate documentation required for a formal LWCF application.

NOW THEREFORE, BE IT RESOLVED, The County of Walton further agrees that in the event the County of Walton’s pre-application is recommended for funding by the Department of Natural Resources, the County of Walton certifies and assures that it has the **ability** and **intention** to finance their fifty (50%) percent of the total project cost and will move forward with due diligence to prepare, or have prepared, appropriate documentation required for a formal LWCF application.

Adopted this ___ day of May, 2023.

By: _____
David G. Thompson, Chairman

Attest: _____
Rhonda Hawk, County Clerk

Walton County, Georgia



Capital Improvements Element

2023 Annual Update: Financial Report & Short Term Work Program

May 2, 2023 Draft

Introduction

This Capital Improvements Element Annual Update has been prepared based on the rules and regulations pertaining to impact fees in Georgia, as specified by the Development Impact Fee Act (DIFA) documents Development Impact Fee Compliance Requirements and Standards and Procedures Local Comprehensive Planning. These documents dictate the essential elements of an Annual Update, specifically the inclusion of a financial report and a schedule of improvements.

According to the Compliance Requirements, the Annual Update:

"must include: 1) the Annual Report on impact fees required under O.C.G.A. 36-71-8; and 2) a new fifth year schedule of improvements, and any changes to or revision previously listed CIE projects including alterations in project costs proposed changes in funding sources, construction schedules, or project scope." (Chapter 110-12-2-.03(2)(c))

The Annual Update itself is based on the amended Walton County Capital

Improvements Element, as adopted by the County on July 7, 2020.

Financial Report

The Financial Report included in this document is based on DIFA, specifically:

"As part of its annual audit process, a municipality or county shall prepare an annual report describing the amount of any development impact fees collected, encumbered, and used during the preceding year by category of public facility and service area." (O.C.G.A. 36-71-8(d)(1))

The County's fiscal year runs from July 1 to June 30. Thus, these financial reports are based on the audits prepared for FY 2022. The required financial information for each public facility appears in the main financial tables.

Schedule of Improvements

In addition to the financial report, the County has prepared a five-year schedule of improvements-a community work program (CWP)- as specified in the Compliance

Requirements (Chapter 110-12-2-.03(2)(c)), which states that local governments that have a CIE must "upgrade their entire Short Term [i.e., Community] Work Program annually."¹

According to DCA's requirements,² the Community Work Program must include:

Introduction

- A brief description of the activity;
- Timeframe for undertaking the activity;
- Responsible party for implementing the activity;
- Estimated cost (if any) of implementing the activity; and,
- Funding source(s), if applicable.

All of this information appears in the Community Work Program portion of this document.

¹ Note the Compliance Requirements specify that the short term work program is to meet the requirements of Chapter 110-12-1-.04(7)(a), which is a reference to the STWP requirements in a previous version of the Standards and Procedures for Local Comprehensive Planning. The correct current description of a STWP is found at Chapter 110-12-1-.03(3).

² Chapter 110-12-1-.03(3).

Emergency Medical Services	New Ambulances (5)	0	0	0	0	0	Emergency Medical Services Department	\$828,413	100% Impact Fees	One per year
Emergency Medical Services	Loganville Office & 2 bays (3,500 sf)	0	0				Emergency Medical Services Department	\$886,233	100% Impact Fees	
Emergency Medical Services	Response Vehicle	0					Emergency Medical Services Department	\$44,046	100% Impact Fees	
Emergency Medical Services	Education Facility (2,500 sf)	0	0				Emergency Medical Services Department	\$830,045	100% Impact Fees	

* Local Taxation Sources include but are not limited to the County General Fund, the Capital Projects Fund or other County taxation source, as determined during the annual budget adoption process, SPLOST or separate funds of the Monroe-Walton Library System.

Category	Item	Quantity	Department	Cost	Funding Source	Notes
Parks and Recreation	Walnut Grove New Picnic Pavilions (4)	0	Parks and Recreation Department	\$355,027	88.50% impact fees (net), 11.5% Local Taxation Sources	
Parks and Recreation	Walnut Grove New Splash Pad	0	Parks and Recreation Department	\$1,396,348	35.43% impact fees (net), 64.57% Local Taxation Sources	
Law Enforcement	New Jail	0	Sheriff's Office	\$12,228,771	4% impact fees (net), 96% Local Taxation Sources	Cost estimate is based on proposed building size (84,900 square feet). Percentage of impact fees as a funding source (i.e., impact fee eligibility) is based on the increase in size (3,400 sq.ft.) from the existing jail (81,500 sq.ft.) to the proposed new facility.
Fire Protection	New Fire Station (81 N.)	0	Fire Rescue Department	\$2,242,422	100% Impact Fees	7,000 sf facility
Fire Protection	New Fire Station (Oasis)	0	Fire Rescue Department	\$2,242,422	100% Impact Fees	7,000 sf facility
Fire Protection	New Support Vehicles (2)	0	Fire Rescue Department	\$106,524	100% Impact Fees	One per year
Fire Protection	New Pumper Fire Trucks (1)	0	Fire Rescue Department	\$485,484	100% Impact Fees	
Fire Protection	New Platform or Ladder Fire Truck	0	Fire Rescue Department	\$738,814	100% Impact Fees	
Fire Protection	New Pumper Fire Truck	0	Fire Rescue Department	\$485,484	100% Impact Fees	
Fire Protection	Support Vehicle (1)	0	Fire Rescue Department	\$53,262	100% Impact Fees	

Category	Activity	2020	2021	2022	2023	2024	Responsible Party	Estimated Cost	Impact Fees / Local Taxation Sources	Other Details
Parks and Recreation	Between Park New Playground	0	0	0	0	0	Parks and Recreation Department	\$406,473	91.14% impact fees (net), 8.86% Local Taxation Sources	
Parks and Recreation	South Walton New Batting Cage Building	0	0				Parks and Recreation Department	\$171,649	99.98% impact fees (net), 0.02% Local Taxation Sources	2,880 sf facility
Parks and Recreation	Walnut Grove New Community Center	0					Parks and Recreation Department	\$7,180,600	58.12% impact fees (net), 41.88% Local Taxation Sources	20,342 sf of 35,000 sf impact fee eligible
Parks and Recreation	Walnut Grove New Concession Building	0					Parks and Recreation Department	\$291,805	99.99% impact fees (net), 0.01% Local Taxation Sources	1,200 sf facility
Parks and Recreation	Walnut Grove New Maintenance Building	0					Parks and Recreation Department	\$33,008	99.97% impact fees (net), 0.03% Local Taxation Sources	1,100 sf facility
Parks and Recreation	Walnut Grove New Dugouts	0					Parks and Recreation Department	\$94,709	99.95% impact fees (net), 0.05% Local Taxation Sources	1,914 sf facility
Parks and Recreation	Walnut Grove New Basketball Court	0					Parks and Recreation Department	\$106,787	88.5% impact fees (net), 11.5% Local Taxation Sources	
Parks and Recreation	Walnut Grove New Parking Lot	0					Parks and Recreation Department	\$565,528	99.92% impact fees (net), 0.08% Local Taxation Sources	250 spaces
Parks and Recreation	Walnut Grove New Baseball Fields (5)	0					Parks and Recreation Department	\$1,767,217	92.2% impact fees (net), 7.8% Local Taxation Sources	
Parks and Recreation	Walnut Grove New Multi-Purpose Fields (4)	0					Parks and Recreation Department	\$1,272,396	88.50% impact fees (net), 11.5% Local Taxation Sources	
Parks and Recreation	Expansion of West Walton Park (Portion of 574 projected spaces)	0					Parks and Recreation Department	\$160,000	37.50% Donation, 62.42% impact fees, 0.08% Local Taxation Sources	150 spaces

**COMMUNITY WORK PROGRAM (CWP) – WALTON COUNTY, GA¹
2023 – 2027**

Category ²	Action/Item	2023	2024	2025	2026	2027	Responsible Party	Cost Estimate	Funding Source	
Library Services	Collection Materials Purchase	□					Monroe-Walton County Library System Board	\$72,487	95.15% impact fees (net), 4.85% Local Taxation Sources	On-going annual purchases
Library Services	Collection Materials Purchase	□					Monroe-Walton County Library System Board	\$74,015	95.15% impact fees (net), 4.85% Local Taxation Sources	On-going annual purchases
Library Services	Collection Materials Purchase		□				Monroe-Walton County Library System Board	\$75,450	95.15% impact fees (net), 4.85% Local Taxation Sources	On-going annual purchases
Library Services	Collection Materials Purchase			□			Monroe-Walton County Library System Board	\$77,036	95.15% impact fees (net), 4.85% Local Taxation Sources	On-going annual purchases
Library Services	Collection Materials Purchase				□		Monroe-Walton County Library System Board	\$78,274	95.15% impact fees (net), 4.85% Local Taxation Sources	On-going annual purchases
Library Services	O'Kelly Replacement		□				Monroe-Walton County Library System Board	\$4,402,000	54.57% impact fees (net), 45.43% Local Taxation Sources	Cost includes \$2,000,000 State participation. The County's maximum participation is 70.92% of the impact fee eligible portion of the project cost

¹ CWP is based on the amended Capital Improvements Element that was adopted on July 7, 2020.

² CWP excludes Animal Services because no impact fee projects are anticipated between 2023 and 2027.

Park Office	986	2030	2030	\$256,497.27	99.99%	\$256,471.62				
Restroom Building	319	2030	2030	\$90,198.60	99.95%	\$90,153.50				
<i>Subtotal (square feet)</i>	41,451									
Recreation Components										
Walnut Grove Basketball Court	1	2024	2024	\$106,786.98	88.50%	\$94,506.47			\$94,506.47	
Walnut Grove Baseball Fields	5	2024	2024	\$1,767,216.79	92.20%	\$1,629,373.88				
Walnut Grove Multi-Purpose Fields	4	2024	2024	\$1,272,396.09	88.50%	\$1,126,070.54				
Walnut Grove Picnic Pavilions	4	2024	2024	\$355,026.78	88.50%	\$314,198.70			\$78,549.68	
Walnut Grove Splash Pad	1	2024	2024	\$1,396,347.49	35.43%	\$494,725.92				
Between Park New Playground	1	2024	2024	\$406,472.79	91.14%	\$370,459.30				
Future Softball Fields	3	2030	2040	\$1,060,287.75	82.67%	\$876,539.88				
Future Picnic Pavilions	2	2030	2040	\$177,513.39	88.50%	\$157,099.35				
Future Basketball Court	1	2030	2040	\$106,786.98	88.50%	\$94,506.47				
Future Tennis Courts	3	2030	2040	\$318,099.02	71.00%	\$225,850.31				
Future Volleyball Court	1	2030	2040	\$58,911.94	11.00%	\$6,480.31				
Future Playgrounds	6	2030	2040	\$2,438,836.77	91.14%	\$2,222,755.83				
Parking Spaces										
Walnut Grove Parking Lot	250	2024	2024	\$565,528.05	99.92%	\$565,075.63				
Future Parking Spaces	324			\$732,924.35	99.92%	\$732,338.01				
<i>Subtotal (parking spaces)</i>	574	2024	2024	\$565,510.00	99.92%	\$565,057.59				
				\$25,645,498.73		\$20,784,215.16	\$0.00	\$0.00	\$880,571.01	

Subtotal (vehicles)	8									
				\$3,613,689.09		\$3,613,689.09	\$0.00	\$0.00	\$42,375.58	

Public Facility: Animal Control*										
Service Area: County-wide										
Project Description	Number	Project Start Date	Project End Date	Cost of Project	Maximum Percentage of Funding from Impact Fees	Maximum Funding Possible from Impact Fees	Impact Fees Expended (this year)	Impact Fees Expended Previously	Impact Fees Encumbered	Status/Remarks
New Floor Area (square feet)	4,676	2028	2028	\$1,938,941.21	100.00%	\$1,938,941.21	\$0.00	\$0.00		
New Vehicles	3	2028	2028	\$81,649.13	94.47%	\$77,134.77	\$0.00	\$0.00		
New Boxes	2	2028	2028	\$41,657.08	100.00%	\$41,657.08	\$0.00	\$0.00		
				\$2,062,247.42		\$2,057,733.06	\$0.00	\$0.00	\$0.00	

*The adopted fee schedule currently does not include 'animal control', thus no impact fees are being collected for this public facility.

Public Facility: Parks & Recreation										
Service Area: County-wide										
Project Description	Units	Project Start Date	Project End Date	Cost of Project	Maximum Percentage of Funding from Impact Fees	Maximum Funding Possible from Impact Fees	Impact Fees Expended (this year)	Impact Fees Expended Previously	Impact Fees Encumbered	Status/Remarks
Parkland Acquisition	147.58	2020	2040	\$3,755,604.00	100.00%	\$3,755,604.00				
New Building Area (square feet)										
South Walton Batting Cage Building	2,880	2023	2023	\$171,649.21	99.98%	\$171,614.88			\$171,614.88	
Walnut Grove Community Center	20,342	2024	2024	\$7,180,600.00	58.12%	\$4,173,364.72			\$108,240.74	20,342 sf of total building size (35,000 sf) is impact fee eligible
Walnut Grove Concession Building	1,200	2024	2024	\$291,805.60	99.99%	\$291,776.42				
Walnut Grove Maintenance Building	1,100	2024	2024	\$33,007.96	99.97%	\$32,998.06			\$32,998.06	
Walnut Grove Dugouts	1,914	2021	2024	\$94,708.53	99.95%	\$94,661.18			\$94,661.18	
Recreation Center	8,459	2030	2030	\$1,605,598.35	99.99%	\$1,605,437.79				
Concession Building Space	3,329	2030	2040	\$809,517.37	99.99%	\$809,436.42				
Maintenance Building Space	922	2030	2030	\$27,666.67	99.97%	\$27,658.37				

New Facilities	40,158	2022	2030	\$12,228,771.91	100.00%	\$12,228,771.91	134129.64			Includes new jail**
				\$12,228,771.91		\$12,228,771.91	134129.64	\$0.00	\$264,912.34	

* Total amount of impact fee eligible building area per adopted CIE (2020).

** Proposed new jail to replace existing jail. Total cost and impact fee eligibility dependent on final size of planned structure. See CWP for details on known plans at this time.

Public Facility: Emergency Communications										
Service Area:		County-wide								
Project Description	Square Feet	Project Start Date	Project End Date	Cost of Project	Maximum Percentage of Funding from Impact Fees	Maximum Funding Possible from Impact Fees	Impact Fees Expended (this year)	Impact Fees Expended Previously	Impact Fees Encumbered	Status/Remarks
Call Center Expansion	1,541	2030	2030	\$356,957.42	100%	\$356,957.42			\$24,554.82	
New Equipment Building	207	2030	2030	\$47,949.50	100%	\$47,949.50				
All New Construction	1,748	2030	2030	\$404,906.92	100%	\$404,906.92				
<i>Subtotal (square feet)</i>	3,496									
				\$809,813.84		\$809,813.84	\$0.00	\$0.00	\$24,554.82	
Public Facility: Emergency Medical Services										
Service Area:		County-wide								
Project Description	Units	Project Start Date	Project End Date	Cost of Project	Maximum Percentage of Funding from Impact Fees	Maximum Funding Possible from Impact Fees	Impact Fees Expended (this year)	Impact Fees Expended Previously	Impact Fees Encumbered	Status/Remarks
Education Facility	2,500	2022	2022	\$830,044.83	100%	\$830,044.83				
Loganville Office & 2 bays	3,500	2023	2023	\$886,233.08	100%	\$886,233.08				
Monroe Garage	2,000	2035	2035	\$639,351.91	100%	\$639,351.91				
<i>Subtotal (square feet)</i>	8,000									
Ambulance	5	2022	2026	\$828,412.93	100%	\$828,412.93			\$42,375.58	1 per year
Response Vehicle	1	2023	2023	\$44,045.63	100%	\$44,045.63				
Ambulance	1	2035	2035	\$188,656.52	100%	\$188,656.52				
Ambulance	1	2038	2038	\$196,944.19	100%	\$196,944.19				

Public Facility: Fire Protection										
Service Area: Unincorporated County plus Between, Good Hope and Walnut Grove										
Project Description	Units	Project Start Date	Project End Date	Cost of Project	Maximum Percentage of Funding from Impact Fees	Maximum Funding Possible from Impact Fees	Impact Fees Expended (this year)	Impact Fees Expended Previously	Impact Fees Encumbered	Status/Remarks
New Building Area (square feet)										
New Fire Station (81 N.)	7,000	2022	2025	\$ 2,242,422.20	100%	\$2,242,422.20				7,000 sf facility
New Fire Station (Oasis)	7,000	2024	2024	\$ 2,242,422.20	100%	\$2,242,422.20				7,000 sf facility
Future Space	13,504	2030	2030	\$4,325,952.78	100%	\$4,325,952.78				
Subtotal (square feet)	27,504									
Support Vehicle	2	2022	2023	\$106,524.00	100%	\$106,524.00				1 per year
Support Vehicle	1	2024	2024	\$53,262.00	100%	\$53,262.00				
Support Vehicle	5	2030	2040	\$266,310.00	100%	\$266,310.00				
Subtotal (support vehicles)	8									
Pumper Truck	2	2022	2022	\$970,967.32	100%	\$970,967.32			\$339,064.31	
Pumper Truck	1	2023	2023	\$485,483.66	100%	\$485,483.66				
Pumper Truck	4	2030	2040	\$1,941,934.65	100%	\$1,941,934.65				
Platform or Ladder Truck	1	2022	2024	\$738,813.76	100%	\$738,813.76				
Brush Truck	2	2030	2040	\$105,679.16	100%	\$105,679.16				
Boat	1	2030	2040	\$31,580.58	100%	\$31,580.58				
HazMat	1	2030	2040	\$426,094.94	100%	\$426,094.94				
Subtotal (heavy vehicles)	12									
				\$13,937,447.26		\$13,937,447.26	\$0.00	\$0.00	\$339,064.31	
Public Facility: Law Enforcement (Sheriff's Office & County Jail)										
Service Area: County-wide										
Project Description	Square Feet*	Project Start Date	Project End Date	Cost of Project	Maximum Percentage of Funding from Impact Fees	Maximum Funding Possible from Impact Fees	Impact Fees Expended (this year)	Impact Fees Expended Previously	Impact Fees Encumbered	Status/Remarks

Public Facility: Library										
Service Area: County-wide										
Project Description	Units	Project Start Date	Project End Date	Cost of Project	Maximum Percentage of Funding from Impact Fees	Maximum Funding Possible from Impact Fees	Impact Fees Expended (this year)	Impact Fees Expended Previously	Impact Fees Encumbered	Status/Remarks
Collection Materials	2,446	2020	2022	\$67,615.28	95.15%	\$64,334.24				
Collection Materials	2,462	2021	2022	\$69,053.13	95.15%	\$65,702.31				
Collection Materials	2,491	2022	2022	\$70,869.82	95.15%	\$67,430.85				
Collection Materials	2,512	2023	2023	\$72,486.91	95.15%	\$68,969.47	28539.62			
Collection Materials	2,528	2024	2024	\$74,015.37	95.15%	\$70,423.76				
Collection Materials	2,541	2025	2025	\$75,450.57	95.15%	\$71,789.31				
Collection Materials	2,557	2026	2026	\$77,035.82	95.15%	\$73,297.64				
Collection Materials	2,561	2027	2027	\$78,273.60	95.15%	\$74,475.35				
Collection Materials	2,561	2028	2028	\$79,403.40	95.15%	\$75,550.33				
Collection Materials	2,570	2029	2029	\$80,808.50	95.15%	\$76,887.25				
Collection Materials	2,574	2030	2030	\$82,106.25	95.15%	\$78,122.03				
Collection Materials	2,574	2031	2031	\$83,291.37	95.15%	\$79,249.64				
Collection Materials	2,578	2032	2032	\$84,628.79	95.15%	\$80,522.16				
Collection Materials	2,570	2033	2033	\$85,576.04	95.15%	\$81,423.45				
Collection Materials	2,570	2034	2034	\$86,811.25	95.15%	\$82,598.71				
Collection Materials	2,561	2035	2035	\$87,782.02	95.15%	\$83,522.38				
Collection Materials	2,549	2036	2036	\$88,619.56	95.15%	\$84,319.28				
Collection Materials	2,549	2037	2037	\$89,898.70	95.15%	\$85,536.34				
Collection Materials	2,537	2038	2038	\$90,754.30	95.15%	\$86,350.43				
Collection Materials	2,532	2039	2039	\$91,914.80	95.15%	\$87,454.62				
Collection Materials	2,537	2040	2040	\$93,393.10	95.15%	\$88,861.18				
<i>Subtotal (materials)</i>	<i>53,359</i>									
O'Kelly Replacement (square feet)*	15,000	2024	2024	\$4,402,000.00	54.57%	\$1,845,059.21			1248513.32	See note below
Future expansion (square feet)*	5,227	2034	2034	\$1,949,045.36	100%	\$1,382,262.97				See note below
<i>Subtotal (square feet)</i>	<i>20,227</i>						28539.62			
				\$8,060,833.95		\$4,854,142.92	\$0.00	\$0.00	\$1248513.32	

*The County's maximum participation is 70.92% of the impact fee eligible portion of the projected cost. This percentage represent the proportion of the county population that resides outside of the four cities in which the public libraries are located.

WALTON CO **Annual Impact Fee Financial Report - Fiscal Year 2022**

Public Facility	Libraries	Fire Protection	Law Enforcement		Emergency Communications	EMS	Parks & Recreation	*Animal Control	CIE Prep**	Administration	TOTAL
			County Jail	Sheriff's Office							
Service Area	County-wide	Unincorporated County plus Between, Good Hope and Walnut Grove	County-wide	County-wide	County-wide	County-wide	County-wide	County-wide			
Impact Fee Fund Balance July 1, 2021	\$224,479.63	\$339,064.31	\$106,161.29	\$158,751.05	\$24,554.82	\$42,375.58	\$580,571.01	\$0.00	\$6,733.60	\$39,900.32	\$1,522,591.61
Subtotal: Fee Accounts	\$368,136.13	\$551,979.55	\$158,787.88	\$208,170.29	\$29,561.76	\$51,200.80	\$971,411.21	\$0.00	\$12,355.49	\$65,801.28	\$2,417,404.39
Accrued Interest	\$265.46	\$398.03	\$114.50	\$150.11	\$21.32	\$36.92	\$700.47	\$0.00	\$8.91	\$47.45	\$1,743.16
(Impact Fee Refunds)	\$0.00	\$0.00	\$0.00	\$0.00	\$0.00	\$0.00	\$0.00	\$0.00	\$0.00	(\$1,224.01)	(\$1,224.01)
Subtotal Expenditures	(\$28,539.62)	\$0.00	\$0.00	(\$134,129.64)	\$0.00	\$0.00	\$0.00	\$0.00	\$0.00	(\$5,270.00)	(\$167,939.26)
Impact Fee Fund Balance June 30, 2022	\$339,861.97	\$552,377.58	\$158,902.38	\$74,190.76	\$29,583.08	\$51,237.72	\$972,111.68	\$0.00	\$12,364.40	\$59,354.72	\$2,249,984.28
Impact Fees Encumbered	\$1,248,513.32	\$339,064.31	\$264,912.34	\$0.00	\$24,554.82	\$42,375.58	\$580,571.01	\$0.00	\$0.00	\$0.00	\$2,499,991.38

*The adopted fee schedule currently does not include "animal control", thus no impact fees are being collected for this public facility.

**CIE Prep is the recoupment of the cost to complete the original impact fee study and create the impact fee program.

Georgia, Walton County

Transmittal Resolution

Capital Improvements Element Annual Update

Walton County, Georgia

WHEREAS, Walton County adopted a Capital Improvements Element as an amendment to the *Walton County Comprehensive Plan*; and

WHEREAS, the Capital Improvements Element Annual Update was prepared in accordance with the “Development Impact Fee Compliance Requirements” and the “Minimum Planning Standards and Procedures for Local Comprehensive Planning” adopted by the Board of Community Affairs pursuant to the Georgia Planning Act of 1989, and a duly advertised Public Hearing was held on May 16, 2023, at 5:00 P.M.

BE IT THEREFORE RESOLVED, that the Board of Commissioners of Walton County does hereby submit the Capital Improvements Element Annual Update to the Northeast Georgia Regional Development Center for Regional and State review, as per the requirements of the Development Impact Fee Compliance Requirements.

Adopted this 16th day of May, 2023.

BY: _____

ATTEST: _____