



AGENDA FOR LAKE COMMITTEE

A Lake Committee meeting will be held on **Thursday, May 18, 2023 at 5:00 PM**
in the **Council Chambers at City Hall, 819 Superior Avenue, Tomah, WI.**

Zoom Meeting

<https://us06web.zoom.us/j/2708608080?pwd=ZTZ0cmJLVFEFb1dzVDNwdi91UHFYQT09>

Meeting ID: 270 860 8080

Passcode: 206751

Dial by your location

1 312 626 6799

1. **Call to Order / Roll Call**
2. **Approve Minutes**
[March 2023 Minutes](#)
3. **Elect Chairperson & Vice Chair**
4. **Adaptive Management**
5. **Climate Change Task Force Update**
6. **Warden Update**
7. **Weed Management**
8. **Winnebago Park Phase I**
9. **Lake Informational Sign Boards**
10. **Boat Dock Approvals**
[1101 Lakeside Dr](#)
11. **Review & Possible Action on Dock Ordinance**
12. **Request for Condo Tree Removal**
13. **Request for Fish Stocking Lake Tomah**
14. **Stormwater Inlet Monitoring**
15. **Monitoring Water Quality at Inlets**
16. **Chairman Updates**
17. **Future Meeting Date - July 20, 2023**
18. **Adjourn**

NOTICE: It is possible that a quorum of members of other governmental bodies of the municipality may be in attendance at the above-stated meeting to gather information. No action will be taken by any governmental body at the above-stated meeting other than the governmental body specifically referred to above in this notice. Please note that, upon reasonable notice, efforts will be made to accommodate the needs of disabled individuals through appropriate aids and services. For additional information or to request this service, contact Becki Weyer, City Clerk, at 819 Superior Avenue, Tomah, WI 54660.

Minutes FOR LAKE COMMITTEE

A Lake Committee was held on **Thursday, March 16, 2023 at 5:00 PM** in the Council Chambers at City Hall, 819 Superior Avenue, Tomah, WI.

1. Call to Order / Roll Call

The Lake Committee met in regular session on Thursday, March 16, 2023, the meeting was called to order by Chairman Kiefer at 5:01 PM. Roll call was taken with Commissioners, Lamont Kiefer, John Rusch, Kim Mello, Hal Burnham, Duane Chapman, Lee Lang and Kevin Arkeketa present. Also present, Director Kirk Arity and Warden Patrick Seybert.

2. Approve Minutes

Motion made by Rusch, second by Lang to approve minutes from previous meeting. All ayes. Motion passed.

3. Adaptive Management

No updates

4. Climate Change Task Force Update

No updates

5. Warden Update

Still some ice out on the lake but ice fishing has decreased. No big issues during the ice fishing season.

6. Weed Management

No updates

7. Storm Water Inlet Monitoring

No updates

8. Winnebago Park Phase I

Projects are continuing. Roof is going on the bathroom. Benches for observation area will be install in spring. Anchor system for dock needs work before dock can be installed.

9. Lake Informational Sign Boards

Motion made by Chapman, second by Arkeketa to designate a spot on the new information board by the dock to acknowledge donations from Tomah Warrens Fisheree.

10. Boat Dock Approvals

No boat dock approvals

11. Review of Boat Dock Composition & Specs

State guidelines state 1 dock, 1 lift, and 2 personal watercrafts per 50 ft of shoreline. The city will be updating the ordinance to reflect state guidelines.

12. Request for Condo Tree Removal

Director Arity will reach out to the association about this request as the request was made by a nonresident.

13. Request for Fish Stocking Lake Tomah

There is a request in with the DNR's fish biologist on a recommendation as far as fish stocking to Lake Tomah.

14. Ag Update

Chapman went over reports from his farm land for the DNR. The reports went over surface run off, and phosphorus and sulfur levels.

15. Chairman Updates

Elections and reorganization are coming up for Lake Committee. Lee Lang and Duane Chapman's terms are up in 2023. Both Lang and Chapman are interested in re-election.

Burnham would like to pass the water sampling onto Lang and Arkeketa this year. Sampling is started 2 weeks after ice out.

Lamont Kiefer attended the Red Cedar Conference in Stevens Point. Motion made by Arkeketa, second by Lang to approve Kiefer's bills from the conference. All ayes. Motion carried.

16. Future Meeting Date - May 18, 2023

17. Adjourn

Motion made by Lang, second Rusch to adjourn at 6:37 PM. All ayes. Motion carried.

CITY OF TOMAH

819 Superior Avenue
Tomah, WI 54660
Public Works Phone: (608) 374-7430

BOAT DOCK/LIFT PERMIT APPLICATION

Name: AMY MADLON

Address: 1101 LAKESIDE DR TOMAH WI 54660

Address where dock and lift will be located: SAME

Please give the following general information regarding the boat dock:

Length (Max 24 lineal ft. from the shore) 3 FOOT ON LAND & 12 FEET IN WATER

Width (30"min.-72"max.) 48 INCHES

Shape (straight, L or T) STRAIGHT

*Maximum length of 12' parallel to the shore as defined in sec. 30-80

Materials used (metal or treated wood) METAL SUPPORTS & HAND RAILS, WOOD DECKING

As per City Ordinance Section 30-84 the following regulations must be met:

- * All docks must be securely anchored to the shoreline
- * No dock or lift may be placed in Lake Tomah before April 1 of the calendar year and all docks and lifts must be removed by October 15 of the same calendar year
- * No dock shall include more than one boat lift per dock.
- * All docks and lifts shall be subject to periodic inspection by the Public Works and Utilities Commission.

(A copy of City ordinance 30-84 is attached)



(Signature of Applicant)

=====

_____ Approved

_____ Denied

Public Works and Utilities Director

Date



KAYAK RAMP ASSEMBLY GUIDE

This guide includes instructions for assembling a kayak or canoe ramp with **aluminum or wood handrails**.

- The **aluminum handrails** and ergonomic handles are included in the ready-to-assemble Kayak Ramp Kit #19290. They can also be ordered online.
- For the **wooden handrails**, we suggest you choose cedar.

If this box is not part of a complete Ramp Kit, here are the products to get (see following pages for the wood needed) :

(with
34110
Wheel Kit)

4x 96" handrail lengths with finishing caps and 12x 3" stainless steel screws.



4 in. wheels



PVC Bumper
(white or black)



Inside
Corners



Back
Plates



Back
Plates



Leg
Holders



Posts &
PVC Caps



16x

2x # 34110 8 / box

1x

#15000, 8' white /
#15028, 10' black

6x

10002

16x

10003

2x

10010

4x

10011

4x

11006
cap. # 15005

4x

11107



40x 3/8" x 2-1/2" Or **5x** # 10200



100x 3/4" Treated wood screws



2x Pan head 1" stainless steel screws

Help line :
1-800-585-1237
info@multinautic.com



STRUCTURE

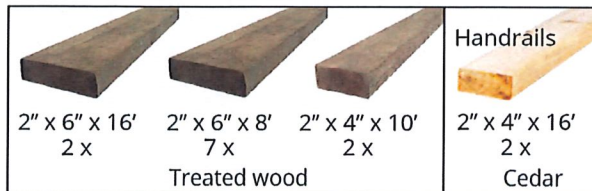
TOOLS NEEDED FOR THIS PROJECT :

- > Saw
- > Tape measure
- > Pencil
- > Hammer
- > 1/4" Allen key
- > Drill with:
 - 7/16" drill bit
 - 9/16" & 3/4" Sockets or wrenches
 - Square head bit

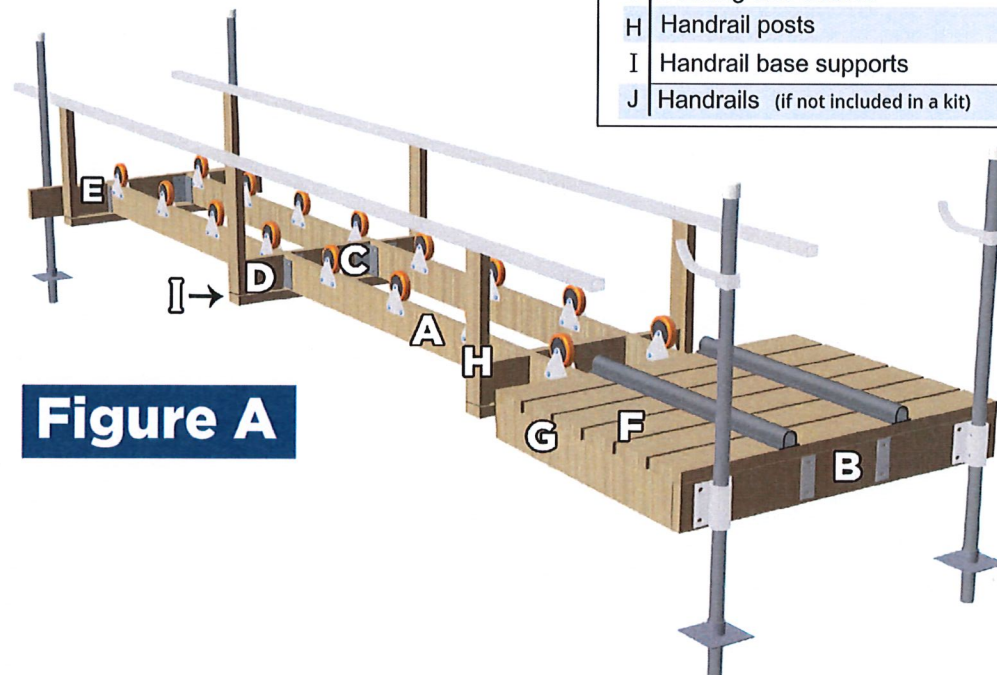
This booklet will guide you through the steps to follow to complete your project.

- > First, you will assemble the basic structure.
- > The second step will guide you through the installation of the steel hardware pieces.
- > You will complete it with the wheels and accessories necessary for its installation.

It is recommended to be 2 people to assemble and install this kayak ramp. The time required is estimated at 4 hours.

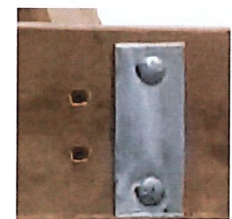


Required Lumber -see Image A		Qty	Size	Lenght
A	Main beams	2	2" x 6"	192" (16')
B	End beams (for posts)	2	" "	48" (4')
C	Central girts	2	" "	15"
D	Outside girts	4	" "	7"
E	Outside girts (at beam location)	2	" "	6 3/4"
F	Decking boards	6	" "	48" (4')
G	Decking side boards	2	" "	34 1/2"
H	Handrail posts	6	2" x 4"	18"
I	Handrail base supports	3	" "	35"
J	Handrails (if not included in a kit)	2	2" x 4"	192" (16')



Assemble the parts without interfering with the installation of the bolts for the steel hardware (see **Figure B**).

To do so, use only 2 screws at these locations. Note that the holes in these steel parts are spaced 3 1/2" apart from center to center.



1 PREPARATION



As each kayak model has its own characteristics, some preparation is necessary to adjust the ramp size to your situation. Before cutting the wood as indicated in the suggested material list, check the location of the scupper holes and the ribs under the hull if there are any. You may need to adjust the length of the Central Girts (C) and Outside ones (D & E) accordingly.

> To evaluate the width of your ramp, place 2 wheels under your kayak where the rolling will be done without any problem all along its length and measure the distance between the wheels. This dimension will be the same as the Central Girts length.

> If you estimate that the Central Girts will need to be extended by 2", the corresponding Outside Girts will be shorter by 1" each : the 7" will be 6", and the 6 3/4" will become 5 3/4".

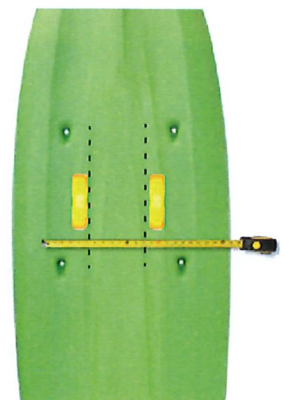
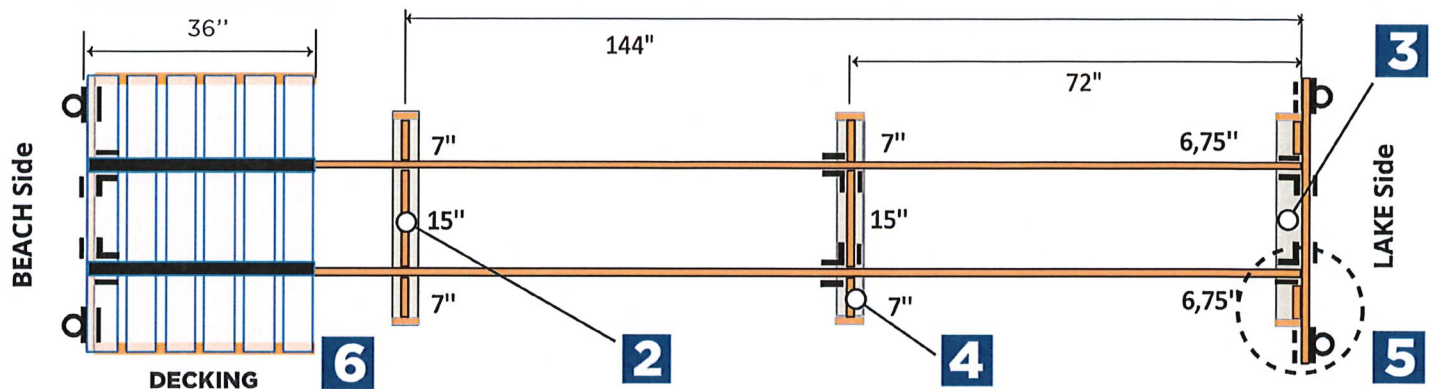


Figure B



2 MAIN BEAMS - CENTER GIRTS - END BEAMS

The assembly will first be done upside down.

- > Assemble the Main Beams (A) and Center Girts (C) with their centers at 72" and 144" as shown in **Figure B**.
- > Add the two End Beams (B).

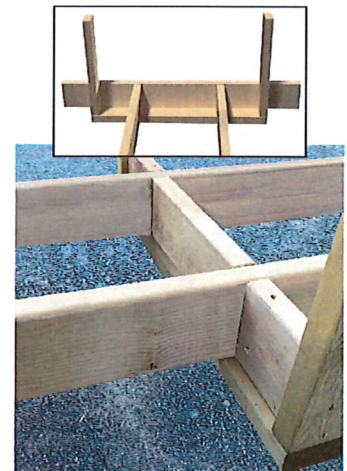


3 HANDRAIL BASE SUPPORTS

- > Center and screw one of the Handrail Support Bases (I) into the Beams (A) near the End Beam (B) on the LAKE Side. Screw the other 2 Bases (I) into the Main Beams (A), making sure to center them to the 72" measurements shown.

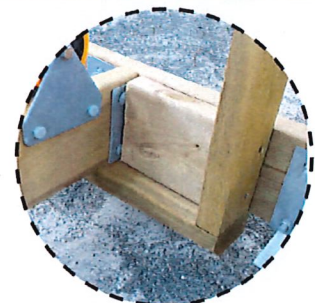
4 OUTSIDE GIRTS

- > Screw the four 7" Outside Girts (D) into these Bases (I). To facilitate screwing in the next step, it is not necessary to align them exactly with the Central Girts (C).
- > Turn the structure right side up and add screws to these Outside Girts (D) to connect them to the Main Beams (A). To do this, install the screws at an angle.



5 HANDRAIL POSTS

- > Add the six Handrails Posts (H) with 5 screws each, 3 on the side and 2 underneath.
- > When you have finished installing the steel hardware, you will need to consolidate the Handrails from End Cap (B) on the Lake Side by screwing them into the End Cap with 3 screws.
- > Then you will imbricate the two remaining Outside Girts (E) with 6 screws each, in the End Beam, Support and Base.



see **Figure B**

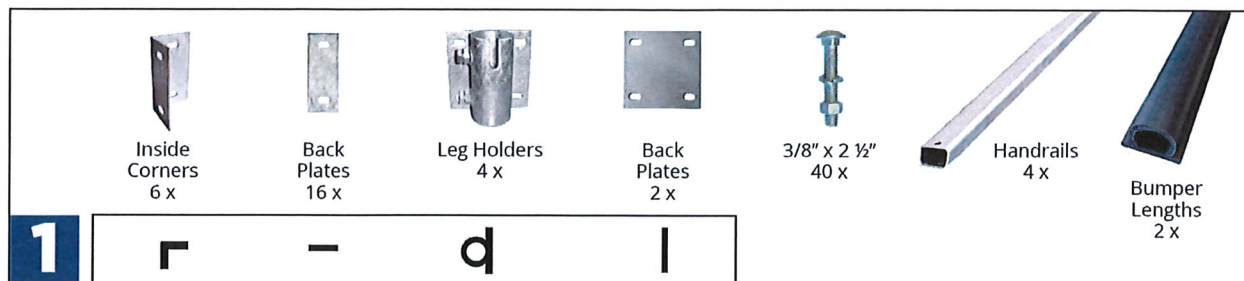
6 DECKING

- > Screw the Decking Boards (F) onto the Main Beams (A) leaving a distance of about 1/2" between them to cover 36".
- > Screw the Decking Side Boards (G) into the End Beam (B) and then screw the Decking Boards (F) into these Sides (G).





HARDWARE



STEEL HARDWARE

1

Refer to the icons in the above parts images to locate the steel hardware locations as shown in **Figure B**.

2

Position the Inside Corners and mark the holes with a pencil. Do the same with the Leg Holders.

3

Drill straight with a 7/16" drill bit.

4

Install components with 3/8" x 2 1/2" bolts. Use a hammer if the bolts do not fit easily into the wood.

HANDRAILS

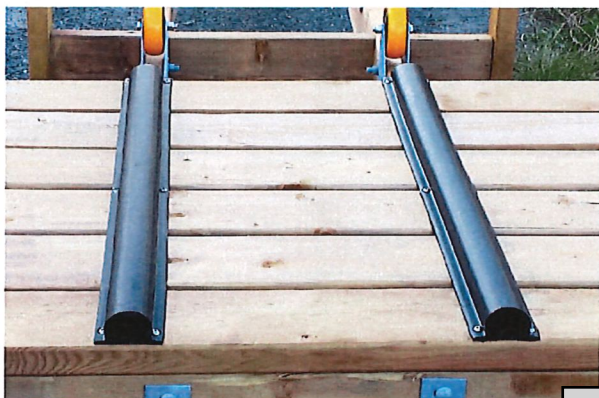
5

- > Locate the ends of the Handrails that do not have protective caps. These ends will be joined on the Center Handrail Support (H).
- > Position the Handrails on the Vertical Supports (H) with the larger, countersunk holes, on top.
- > Screw them securely into these Supports (H).

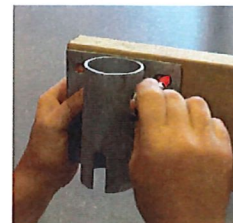
PVC BUMPERS

6

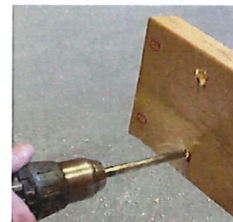
Install the Bumper Lengths on the Decking with stainless steel screws. They will stabilize and protect your kayak at the front.



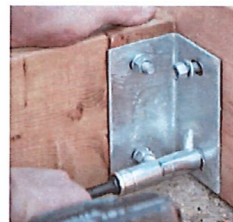
2



3



4



5



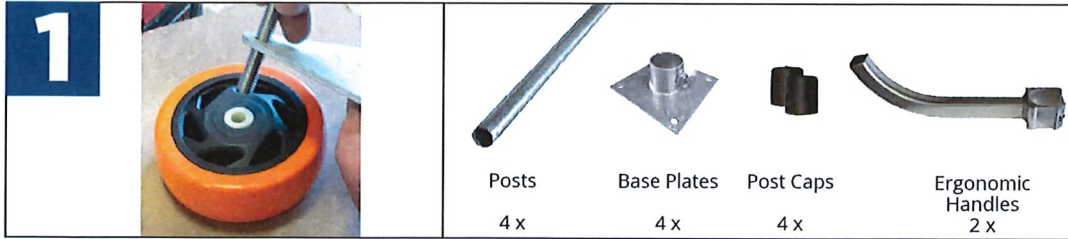
Should you encounter any difficulties with this product, do not return it to the store.

Please contact our customer service at

1-800-585-1237

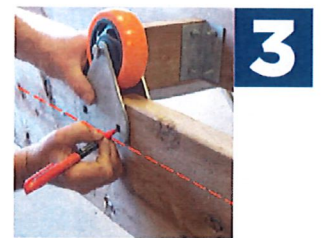
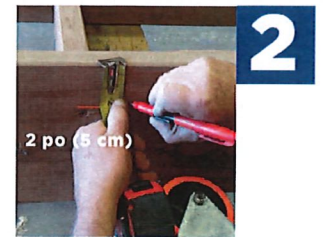


WHEELS & RAMP INSTALLATION



WHEELS INSTALLATION

- 1 Assemble the Wheels as shown above with the nylon bushing, the stainless steel center axle bolt and the 2 triangular plates.
- 2 Mark the structure at the distances shown in **Figure C** with lines 2" from the top of the Beams.
- 3 Position the Wheels by aligning their triangular plate bases to your marks and note in pencil the location of the holes to be drilled.
- 4 Drill the holes straight. Install the Wheels and adjust the assembly.



RAMP INSTALLATION

- 5 Slide the Posts located "LAKE Side" into the Leg Holders and temporarily stabilize them with one of the hexagonal bolts. Securely fasten the Base Plates within +/- 6" of the ends of these Posts.
- 6
 - > Move the ramp to its final location. Once properly positioned, drive the Posts until the Base Plates are on the ground.
 - > Add the other 2 Posts leaving at least 30 in. sticking out. Base Plates at this end are not always required especially if the ramp is resting on the ground.
 - > Adjust the height and level of the ramp with the bolts of the 4 Leg Holders.
 - > Add the Ergonomic Handles. Adjust their height to fit your needs, then install the Caps.
 - > If the ramp floats, drive the Posts deeper into the ground for a better grip. In order to prevent ice damage, it is suggested to take the ramp out of the water during winter.

