



# JOINT CITY COUNCIL/PLANNING COMMISSION MEETING

Wednesday, March 16, 2022 at 5:30 PM

---

## COUNCIL MEMBERS:

Mayor Rick Scholl  
Council President Doug Morten  
Councilor Patrick Birkle  
Councilor Stephen R. Topaz  
Councilor Jessica Chilton

## LOCATION & CONTACT:

HYBRID: Council Chambers & Zoom (details below)

Website | [www.sthelensoregon.gov](http://www.sthelensoregon.gov)

Email | [kpayne@sthelensoregon.gov](mailto:kpayne@sthelensoregon.gov)

Phone | 503-397-6272

Fax | 503-397-4016

---

## AGENDA

### CALL SPECIAL SESSION TO ORDER

### DISCUSSION TOPICS

1. Update on Street and Utility Extensions Project for S. 1st Street and Strand Street through the St. Helens Waterfront Property to Plymouth Street

### OTHER BUSINESS

### ADJOURN

### VIRTUAL MEETING DETAILS

Join: <https://us02web.zoom.us/j/84870770603?pwd=VFdBSUxvUzIVc2xMZXYwT09DWTJEUT09>

Meeting ID: 848 7077 0603

Passcode: 505983

Dial: 346-248-7799

---

The St. Helens City Council Chambers are handicapped accessible. If you wish to participate or attend the meeting and need special accommodation, please contact City Hall at 503-397-6272 in advance of the meeting.

Be a part of the vision...Get involved with your City...Volunteer for a City of St. Helens Board or Commission!

For more information or for an application, stop by City Hall or call 503-366-8217.

**CITY OF ST. HELENS**

265 Strand Street  
St. Helens, OR 97051  
Phone: 503-397-6272  
Fax: 503-397-4016

**Crystal King**  
Communications Officer  
Phone: 503-366-8215  
Fax: 503-397-4016  
Email: cking@sthelensoregon.gov

---

# PRESS RELEASE

FOR IMMEDIATE RELEASE  
March 3, 2022

## **ST. HELENS HOSTS JOINT MEETING TO GIVE RIVERFRONT PROJECT UPDATE**

**St. Helens, Ore.** – The St. Helens City Council and Planning Commission are holding a joint meeting on Wednesday, March 16, 2022, at 5:30 p.m. to review progress on the St. Helens Riverfront Project. The meeting will be an opportunity for the City's consultants to provide an update on the design efforts specific to the Streets and Utilities Extension Project.

Otak, Inc. is the City's project engineer and Mayer/Reed, Inc. is the City's landscape architect for the project. The consultants will present the newest project design which is currently 90% complete. Groundbreaking for the Streets and Utilities Extension Project is anticipated to begin in 2022. This project is only focused on public infrastructure and does not include any private development component.

The community is invited to attend the joint meeting to learn about the design either in person or virtually. The meeting is being hosted in the St. Helens Council Chambers. Space is limited, but the presentation will be live streamed on the [City's YouTube page](#) and on [Zoom](#). A recording of the presentation will also be

available to [watch online](#) the following day. This meeting is intended for the City Council and Planning Commission to review the latest design updates from the City's consultants and is not being held as a community open house. Because of this, there will be limited opportunity for public comment during the meeting.

The City of St. Helens launched the Streets and Utilities Extension Project in March 2021. The project is focused on creating design documents, securing permits, and constructing street and utility extensions for South 1<sup>st</sup> Street and Strand Street through the St. Helens waterfront property. Street extension design has been focused on creating safe pedestrian connections, inviting intersection treatments, and providing ample on-street parking. Pedestrian amenities such as landscaped seating, interpretive and wayfinding signage, more visible crosswalks, and consistent light fixtures throughout the existing area and onto the property are designed to create a cohesive Riverfront District.

The March 16 presentation will include a description of the design along South 1<sup>st</sup> Street, beginning at Cowlitz Street and extending south through the waterfront property to Plymouth Street. The pedestrian network design for the bluff trail connecting Nob Hill Nature Park, the Tualatin Street staircase, and ultimately the future [Riverwalk Project](#) pathway at the south end of the site will also be reviewed. The bluff trail will be located immediately west of the new South 1<sup>st</sup> Street roadway. Its connection with the Riverwalk Project pathway will create a complete off-street pedestrian loop through the property, similar to the interim trail route on the site today. To see the current Riverwalk Project plans, visit the project's website at [www.sthelensoregon.gov/waterfront/page/riverwalk-project](http://www.sthelensoregon.gov/waterfront/page/riverwalk-project).

The presentation will review how pedestrian safety on Strand Street will be improved in front of City Hall. It will also show how Cowlitz Street will be extended onto the waterfront property with a traffic circle just south of Columbia View Park. The extension of Strand Street onto the property and its connection to South 1<sup>st</sup> Street will also be reviewed.

The meeting presentation will be posted on the [City's website](#) on March 15, 2022. The meeting is being held in the Council Chambers at City Hall, 265 Strand Street, Plaza Entrance, St. Helens, OR 97051. The facility is handicap accessible. If you need special accommodations, please contact City Hall at 503-397-6272 at least 48 hours before the meeting.

### **Project Background**

The City of St. Helens is currently working on two riverfront projects to bring major infrastructure and public amenity improvements to the St. Helens waterfront. Both projects are focused on infrastructure development on the former Boise veneer property. The property is a vacant 22-acre, half-mile long piece of property. It is bordered by the Columbia River to the east, Columbia View Park and the historic St. Helens Riverfront District to the north, Nob Hill Nature Park to the southwest, and Plymouth Street at its south end. The site is commonly referred to as the St. Helens waterfront property.

While the purpose of the upcoming meeting focuses on the Streets and Utilities Extension Project, the City also launched the [Riverwalk Project](#) in March 2021 to design public access on the St. Helens waterfront property and a new stage for the Columbia View Park amphitheater. The riverwalk will extend along the banks of the Columbia River from Columbia View Park to Plymouth Street and



Nob Hill Nature Park. The new linear park design will incorporate a combination of pathways, boardwalks, and overlooks.

Both projects are part of the City's ongoing efforts to open a large expanse of riverfront property that was formerly private industrial land fenced off from community access. With the City's purchase of the property in 2015, major planning and design work has taken place to reclaim the waterfront to serve the St. Helens community in new ways. This redevelopment process aims to pay homage to both the past and future of the city by creating new amenities to attract new business and residents to St. Helens and provide guaranteed public access to a larger stretch of the Columbia River.

###

For further information regarding this meeting, please contact Communications Officer Crystal King at [cking@sthelensoregon.gov](mailto:cking@sthelensoregon.gov).





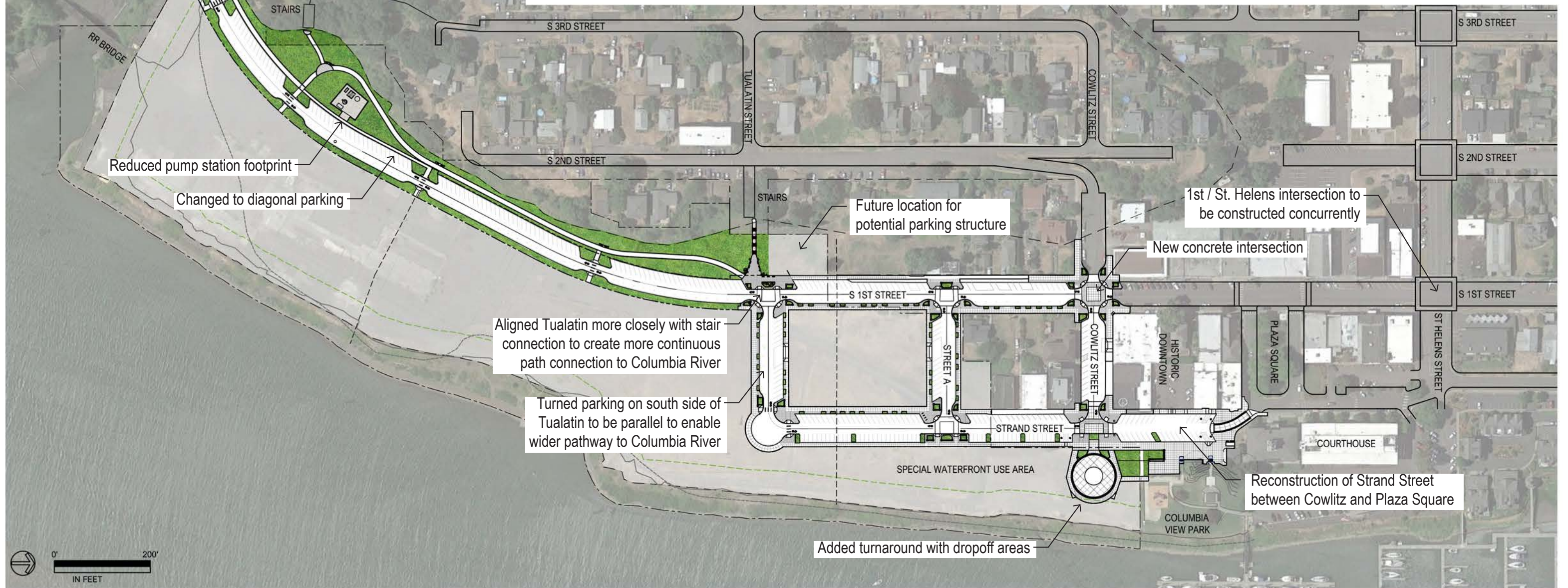






## Shift of project focus to downtown:

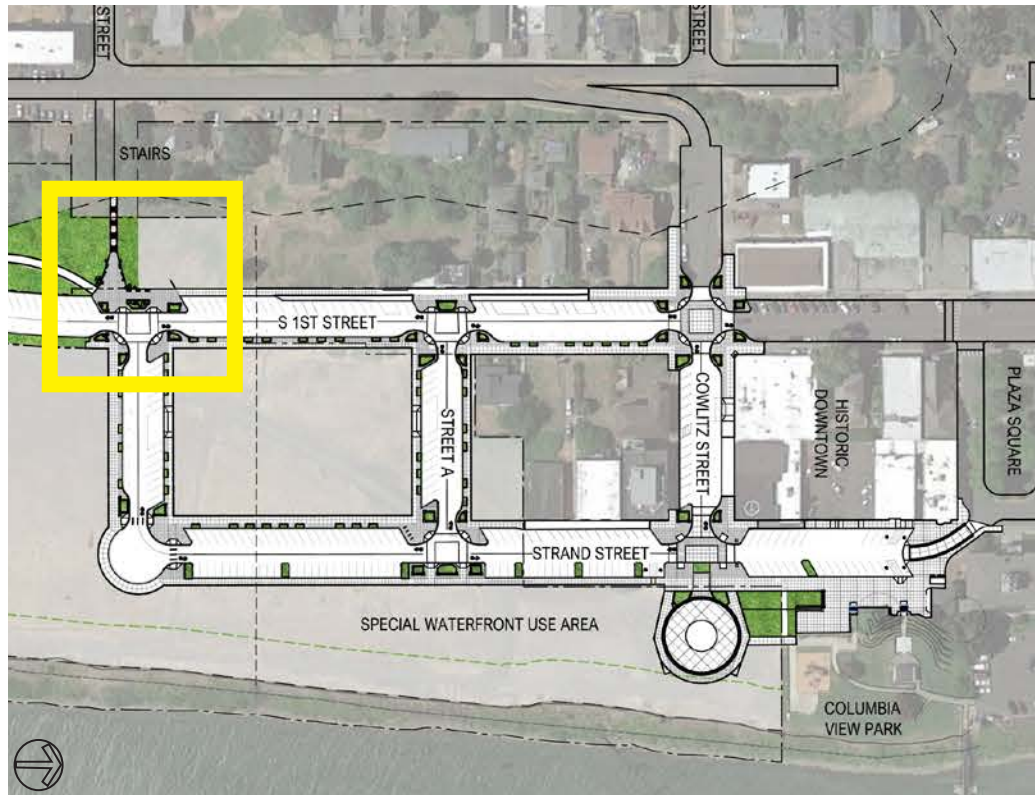
- Create consistent urban form at center of city, which will set up the development to the south.
- Connect existing historic downtown to new mixed-use development.
- Utilize existing street network to create improved access to river.
- Focus festival street and gateway toward existing event and public spaces.
- Create cohesive project with first phase of riverwalk and improvements to Columbia View Park.



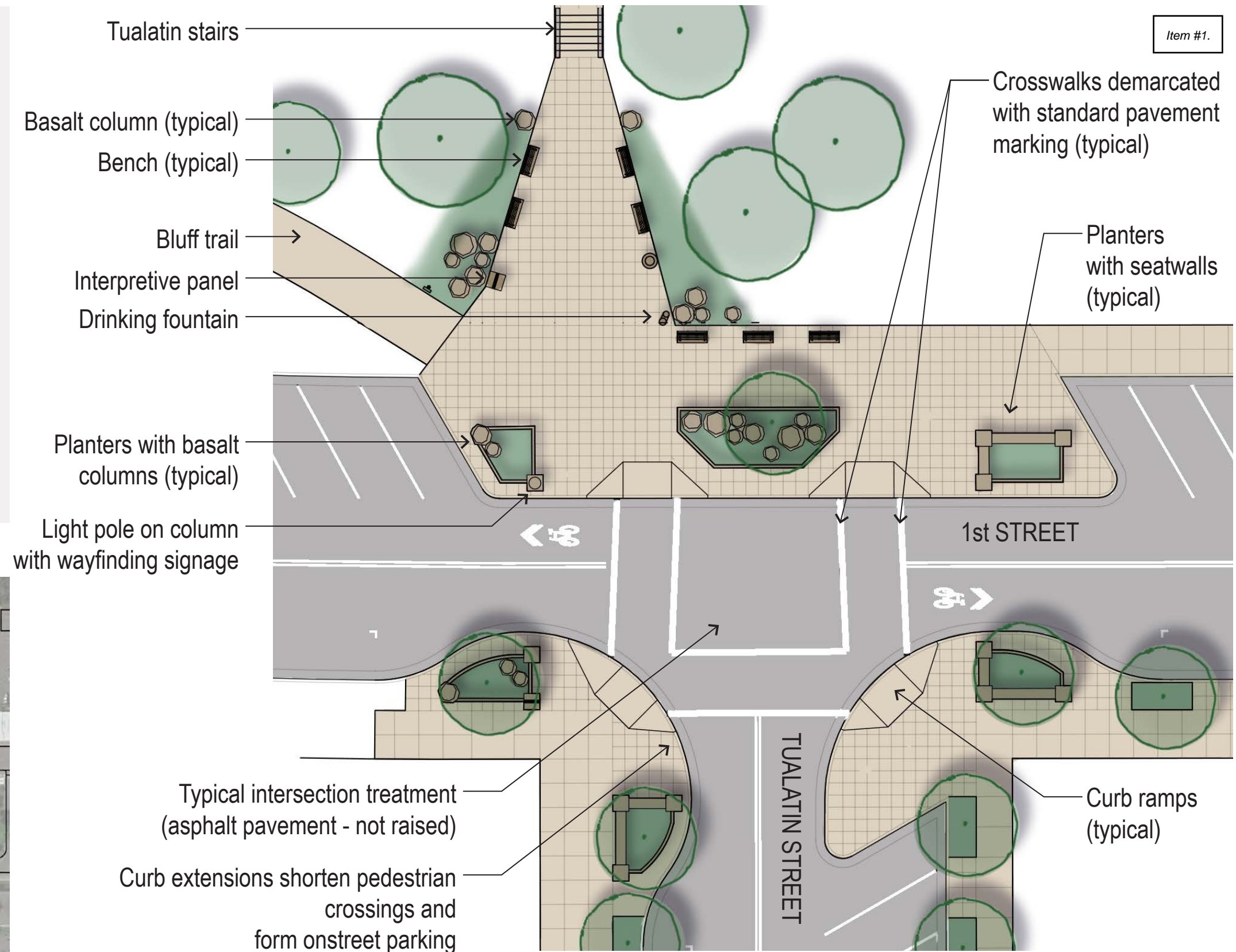


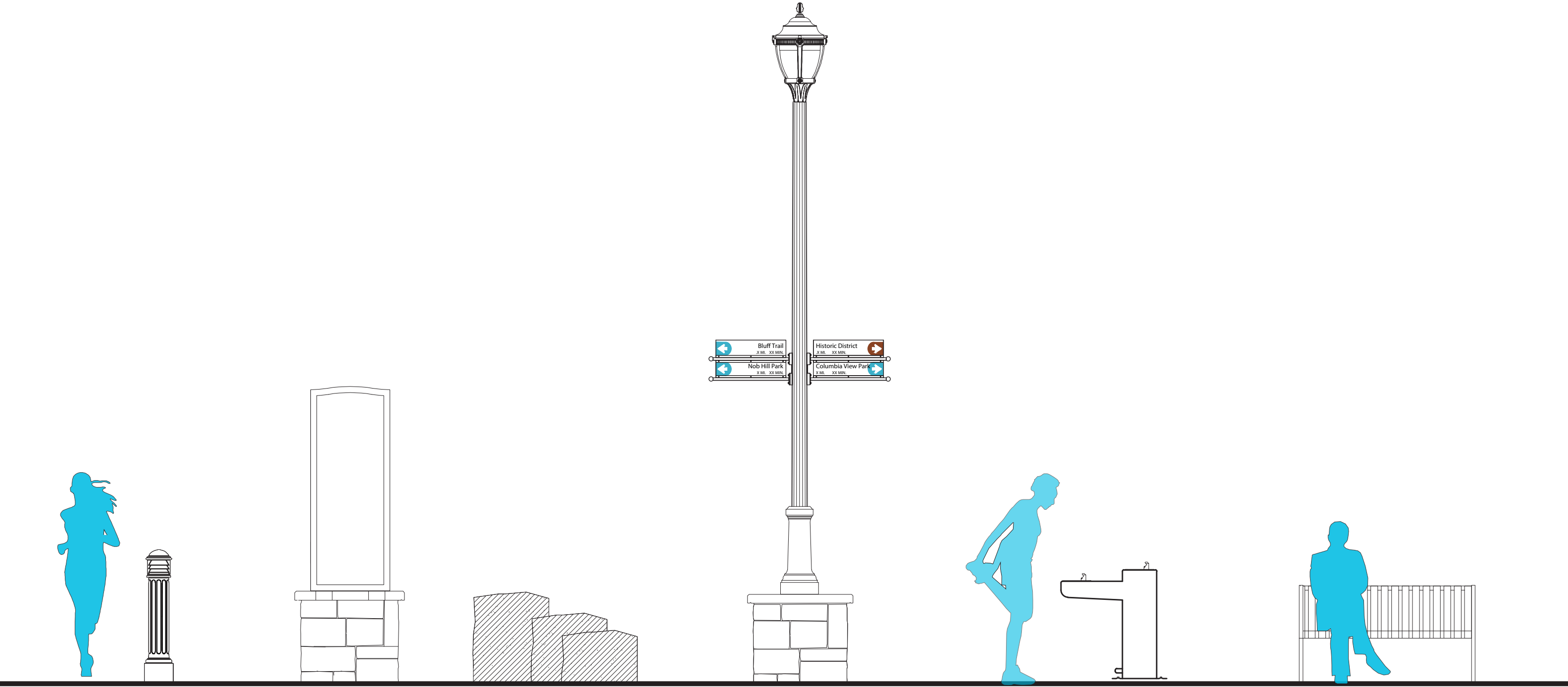
## 1st and Tualatin Intersection

- Standard treatment is asphalt pavement through intersection
- Curb extensions at intersections designed to reduce pedestrian crossing distance and form parking
- Single curb ramp at each corner to be provided
- Planters distinguish each intersection with some including seatwalls



Location Map





LIGHTED  
BOLLARD

INTERPRETIVE  
PANEL

BASALT  
COLUMNS

WAYFINDING  
SIGNAGE

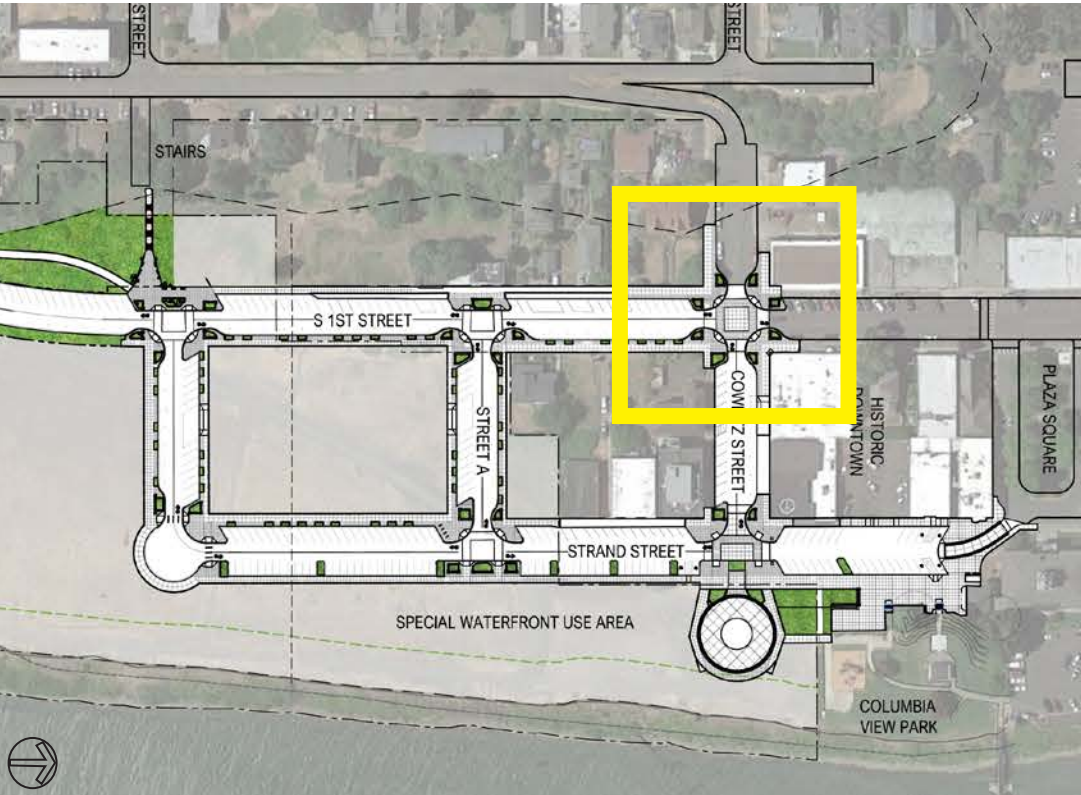
DRINKING FOUNTAIN

BENCH

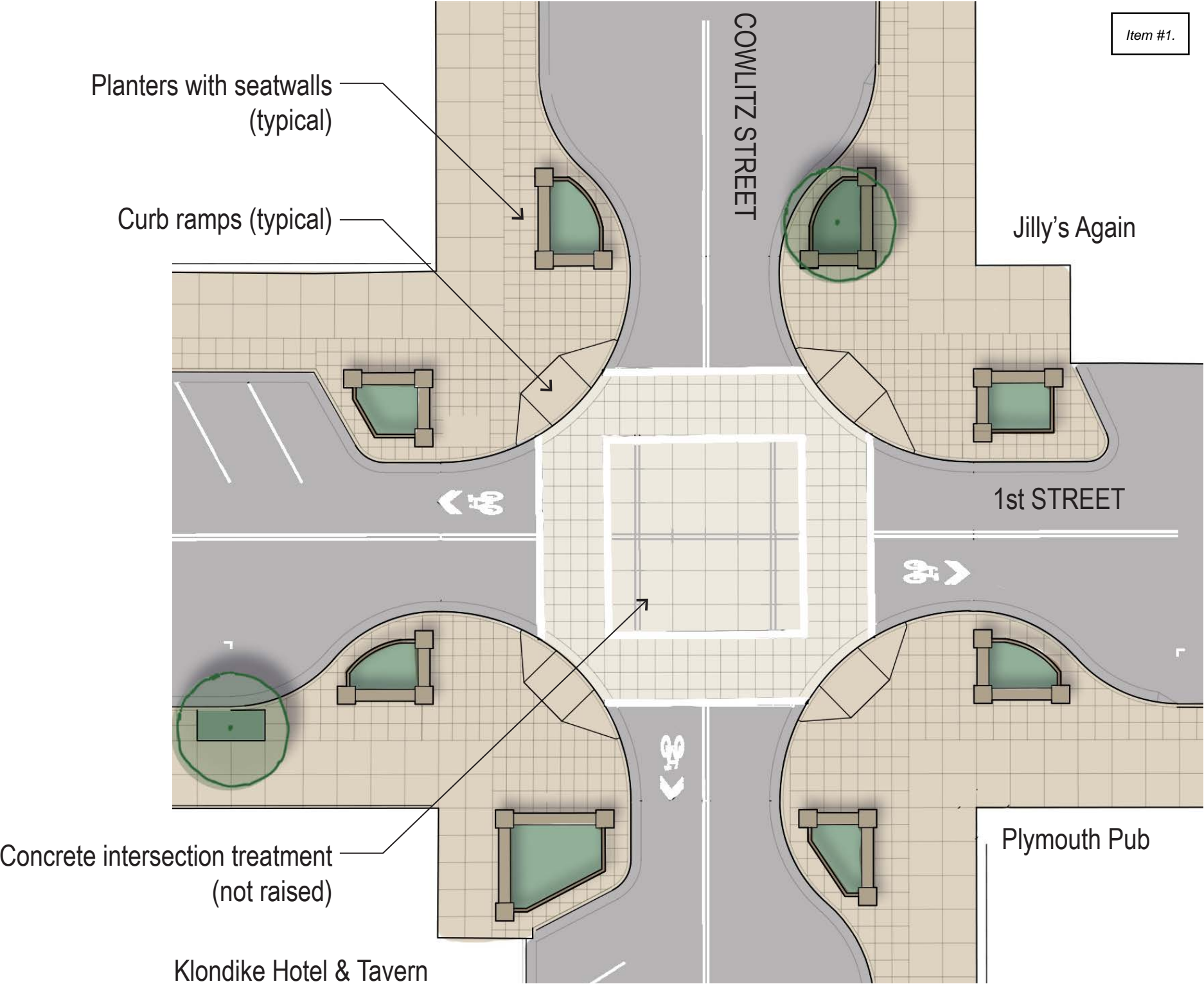


1st and Cowlitz Intersection

- Similar to 1st and Tualatin in geometry
- Concrete treatment (not raised)



Location Map

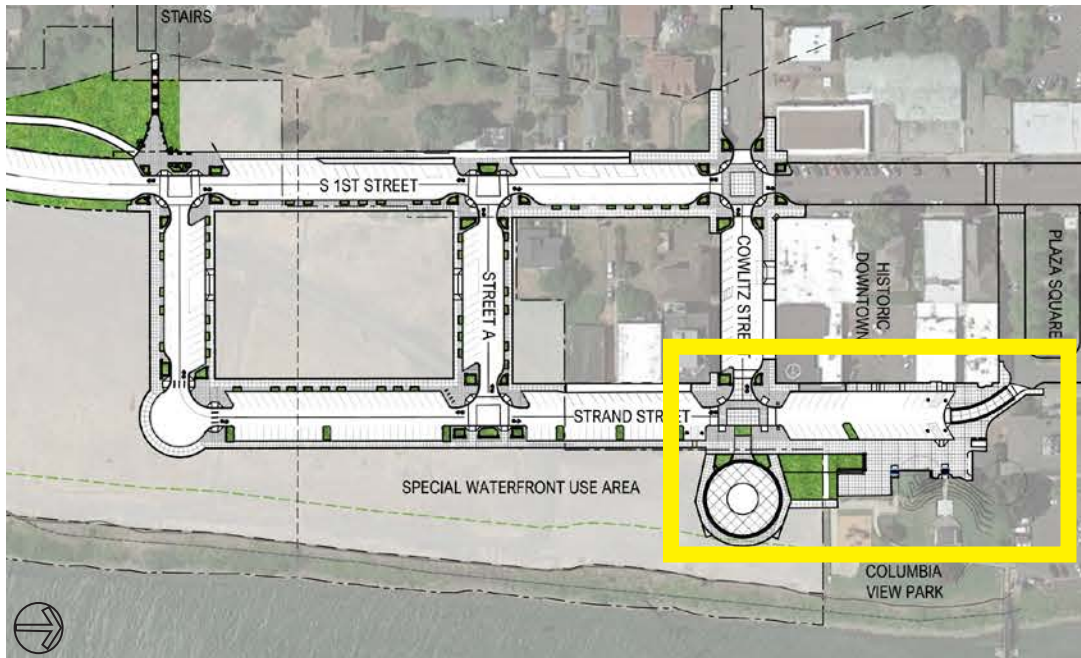


Item #1.

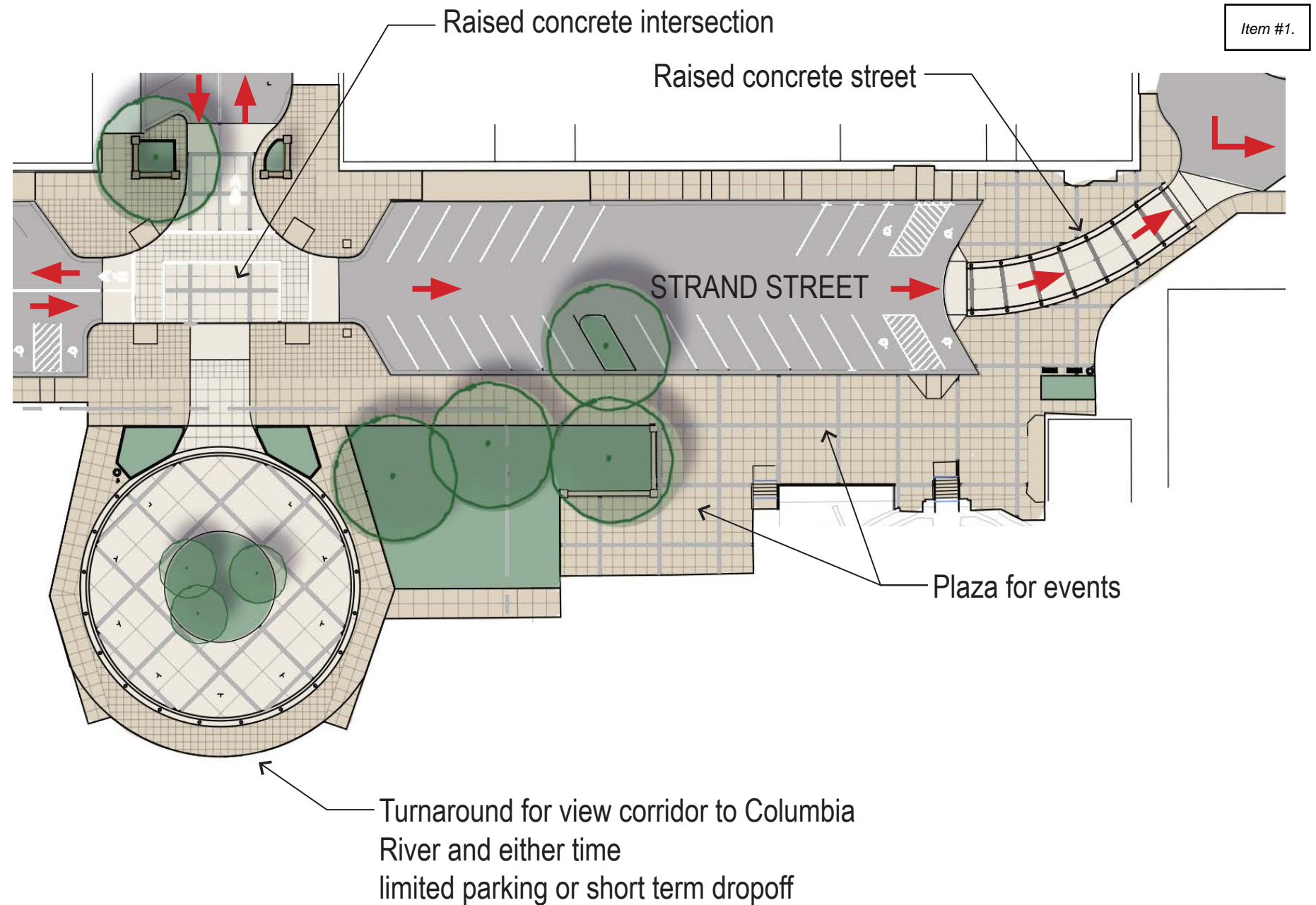


## Strand Street Conversion to one-way north between Cowlitz Street and Plaza Square:

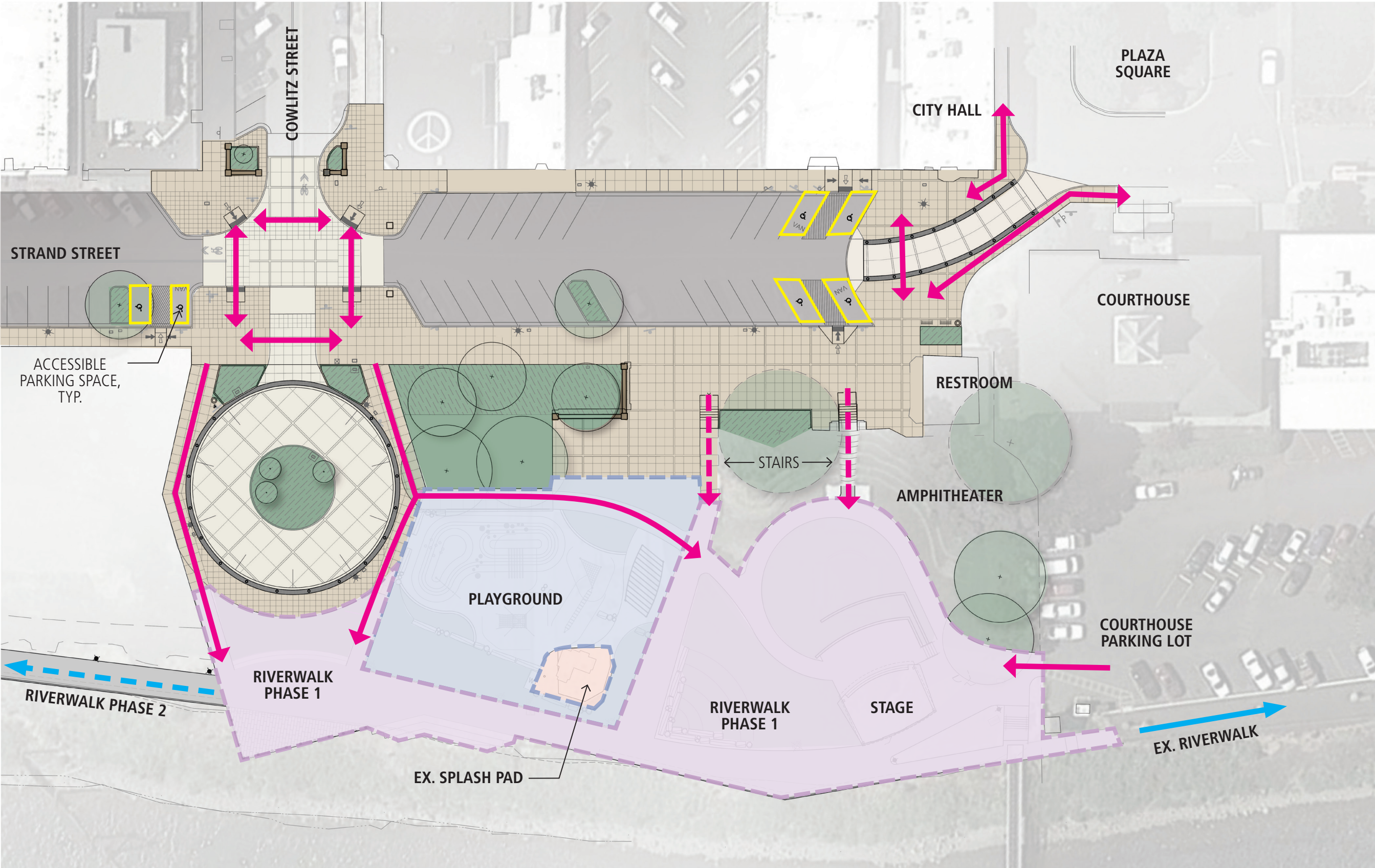
- Increases safety at blind corner created with City Hall building.
- Increases pedestrian accessibility by concentrating parking along Strand Street and opening up pedestrian plaza above Columbia View Park.
- Raised intersection at Cowlitz/Strand and raised portion of Strand Street near City Hall and Courthouse create more opportunities for pedestrian crossing.
- Revised grading along Strand Street allows for ADA parking stalls to be compliant with maximum ADA grades.
- Reduces amount of vehicle control signage (stop signs) to enable more fluid vehicle movement.



Location Map





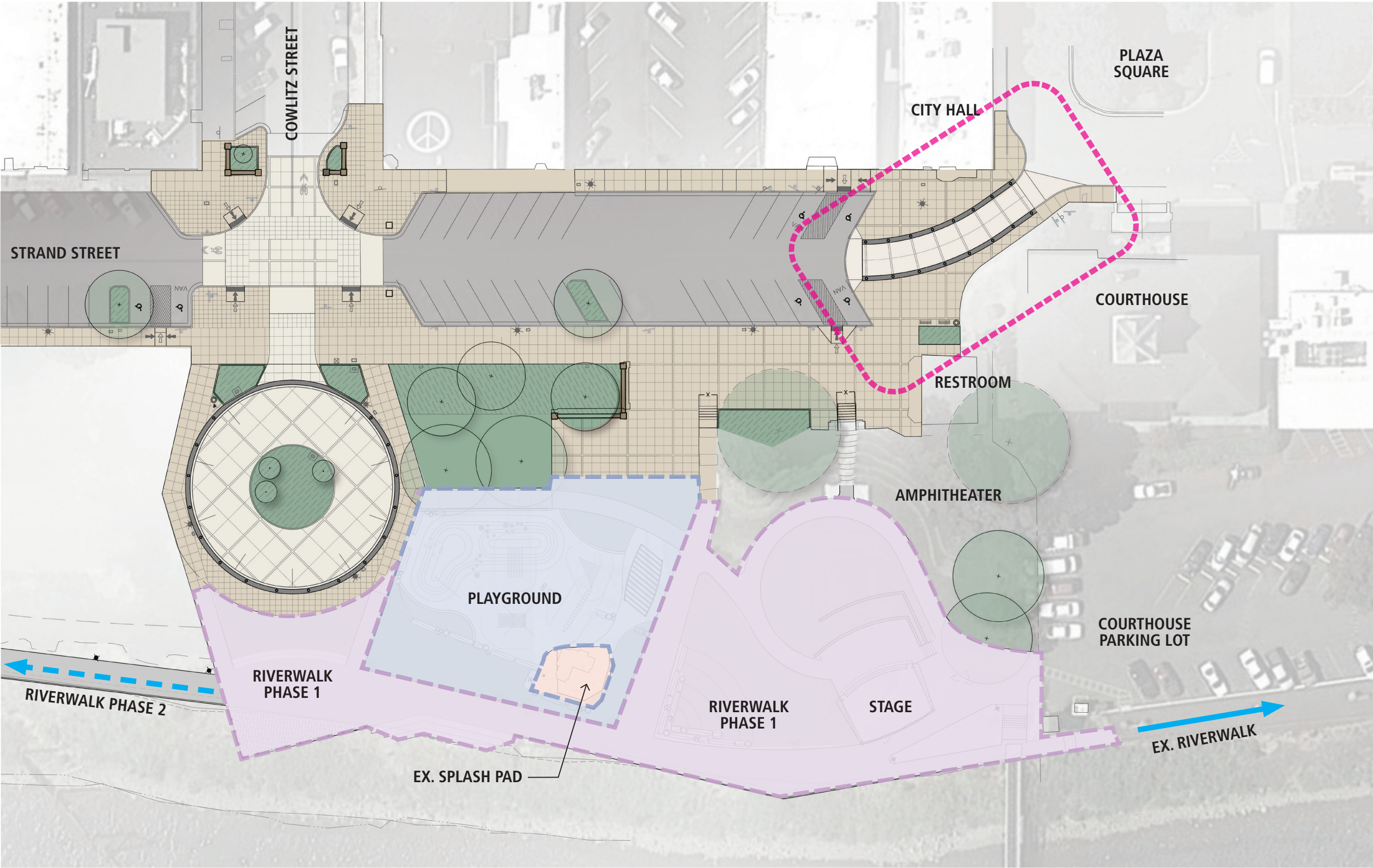


S. 1st AND STRAND STREETS | PEDESTRIAN CIRCULATION

MARCH 16, 2022







S. 1st AND STRAND STREETS | CURBLESS AREA AT PINCH POINT

MARCH 16, 2022



Mayer/Reed



Narrow sidewalk and difficult sightlines at City Hall corner

Skewed crosswalk

No sidewalk

Vehicle-dominated space





More pedestrian space  
at City Hall Corner

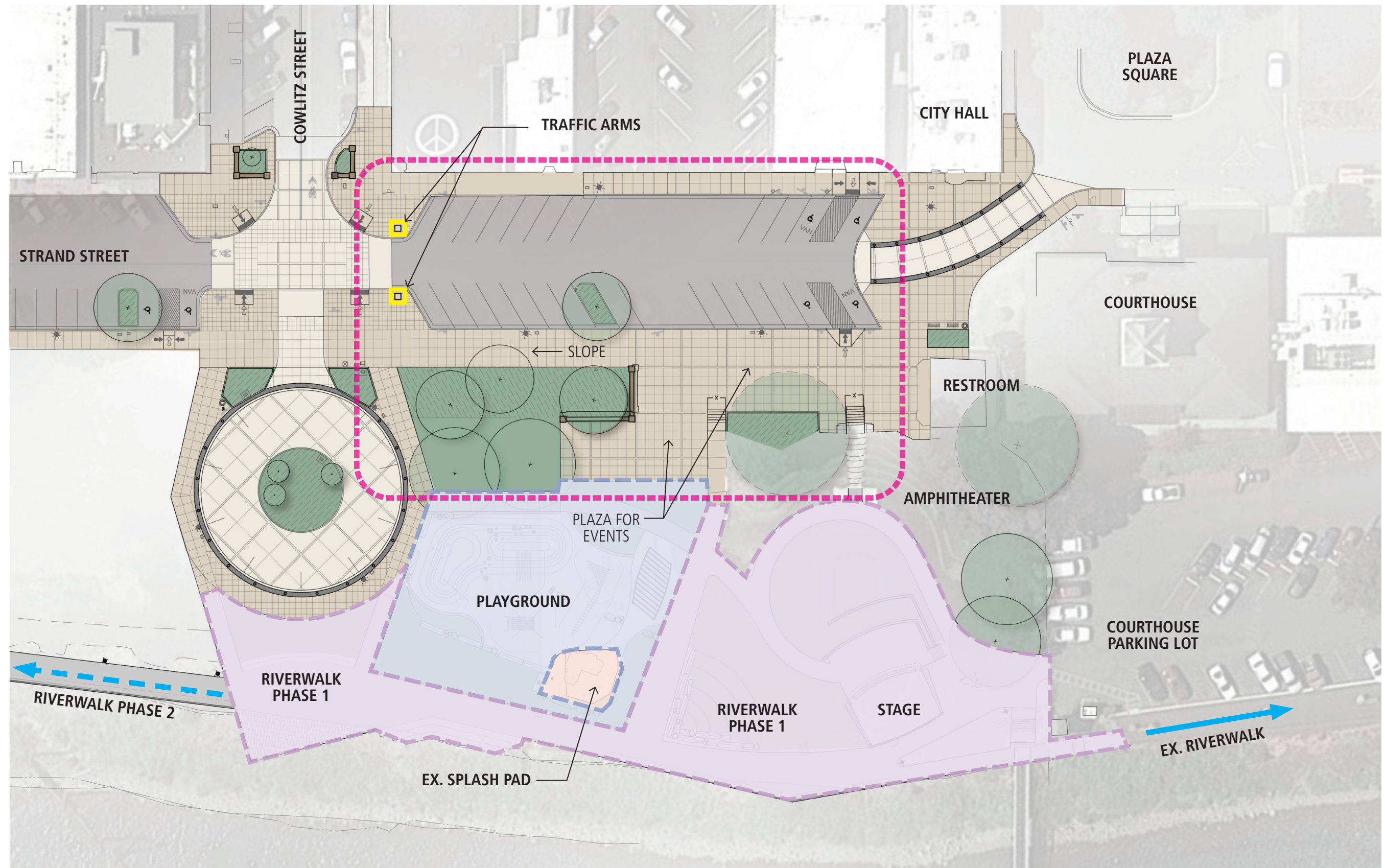
Curbless one-way street with bollards

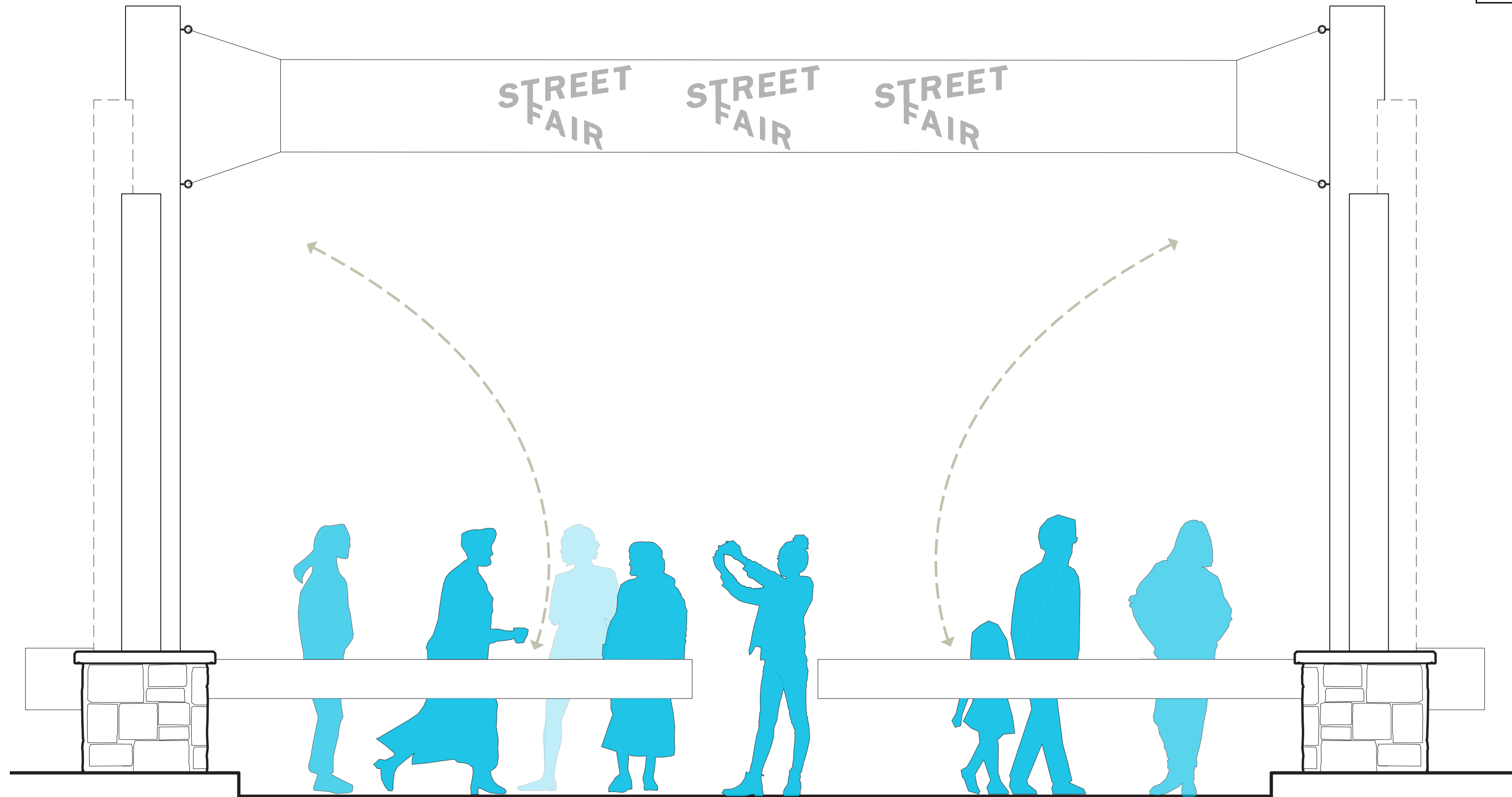
Pedestrian-dominated space

Sidewalk added

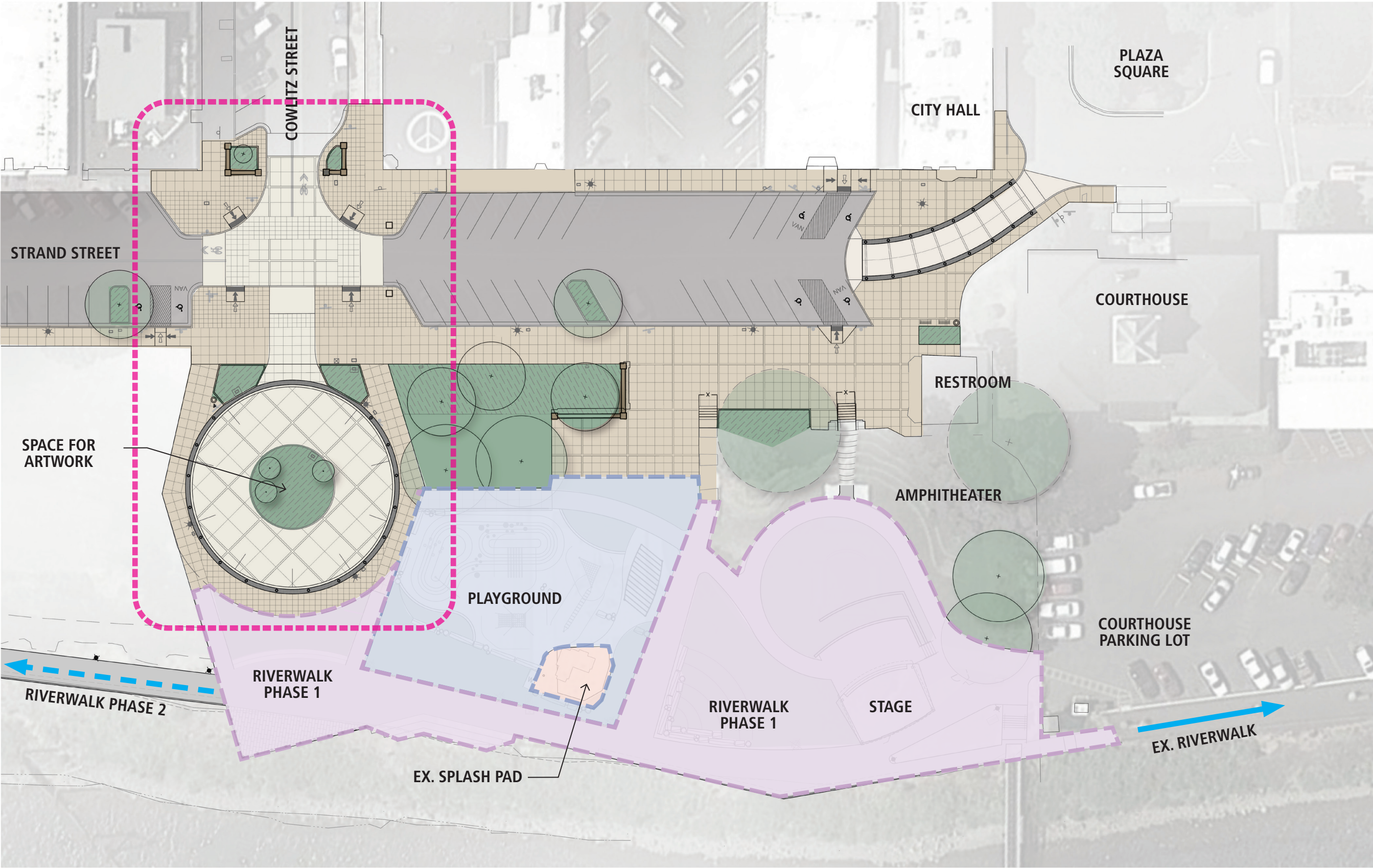














BOLLARD TRASH RECEPTACLE BIKE RACK LIGHT POLE STONE SEATWALL PLANTER BENCH



