



PARKS AND TRAILS COMMISSION

Monday, May 13, 2024 at 4:00 PM

HYBRID: Council Chambers & Zoom (details below)

AGENDA

CALL TO ORDER

APPROVAL OF MINUTES

1. 1-Approve April Minutes

GUEST COMMENTS (3 MINUTES)

NEW BUSINESS

- 2-Welcome new Commissioners - Pettit
- 3-Milton Creek Woodland Reserve Sub-Committee - Jacobson
- 4-Park Assignments - Jacobson
- 5-Memorial Process - Jacobson
- 6-Urban Trail Sub-Committee - Belcher
- 7-Phone Booth in McCormick - Hellmich
- 8-Disc Golf maintenance - Hellmich
- 9-Grey Cliff off-leash area - Blumenthal
- 10-Pedestrian traffic during construction - Blumenthal
- 11-Dalton Lake presentation - Pettit
- 12-Walnut Park presentation - Pettit
- 13-City Council Annual Report - Pettit
- 14-SUP Impact Assessments - Lathrope

OLD BUSINESS

- 15 - Milton Creek Proposal - Pettit

STAFF REPORT

COUNCILOR'S REPORT

DISCUSSION ITEMS

ACTION ITEMS

ADJOURNMENT

Join Zoom Meeting

<https://zoom.us/j/97550362785?pwd=QVBzWGZScTBBM0VLWUJZNm1ENXI4Zz09>

Meeting ID: 975 5036 2785

Passcode: 670236

One tap mobile

+16694449171,,97550362785#,,,,*670236# US

Dial by your location

- +1 669 444 9171 US
- +1 253 215 8782 US (Tacoma)

The meeting location is accessible to persons with disabilities. A request for an interpreter for the hearing impaired or for other accommodations for persons with disabilities should be made at least 48 hours before the meeting to City Hall at 503-397-6272.

Be a part of the vision and get involved...volunteer for a City Board or Commission! For more information or for an application, go to www.sthelensoregon.gov or call 503-366-8217.



PARKS AND TRAILS COMMISSION

Monday, April 08, 2024 at 4:00 PM

DRAFT MINUTES

MEMBERS PRESENT

Commissioner Dana Lathrope
Chair Lynne Pettit
Commissioner Paul Barlow
Commissioner Jerry Belcher
Commissioner Howard Blumenthal
Vice Chair Scott Jacobson

STAFF PRESENT

Brandon Sundeen, City Council
Melisa Gaelrun-Maggi, Parks Administrative Assistant
Buck Tupper, Facilities Maintenance Supervisor

VISITORS

Nick Hellmich

CALL TO ORDER 4pm

APPROVAL OF MINUTES

1. Approval of March minutes

Belcher would like to double check the audio to see if he mentioned squatters on Sand Island.

Motion made by Commissioner Blumenthal, Seconded by Commissioner Belcher.

Voting Yea: Chair Lathrope, Vice Chair Pettit, Commissioner Barlow, Commissioner Belcher, Commissioner Blumenthal, Commissioner Jacobson

NEW BUSINESS

2 - Milton Creek Reserve presentation - Chair Pettit

Chair Pettit wants Vice Chair Jacobson to move his part of the presentation to next month in the interest of time.

Chair Pettit gave a presentation on establishing a Milton Creek Reserve.

Belcher pointed out that he thought the Milton Creek sub-committee was about the trail on the other side of the creek not the reserve. It appears that Jacobson was talking about another project.

Barlow is concerned that they should see if the City has plans for the area before putting in the work.

Pettit doesn't feel they need a motion at this time until the sub-committee has met.

Lathrope wants all of the Commissioners to keep in mind the money the City would lose from the tax lots as well as the money it would require to renovate the space.

3 - Citizens Day - Pettit

Pettit has secured a booth space for the event and can provide a tent and table. Most of the other Commissioners are already volunteering for other booths.

4 - Candidate Interviews - Pettit

The interview sub-committee met and interviewed both candidates. Pettit gave a brief review of their achievements and highlights. The sub-committee recommends both.

Motion made by Commissioner Blumenthal, Seconded by Commissioner Belcher.

Voting Yea: Chair Lathrope, Vice Chair Pettit, Commissioner Barlow, Commissioner Belcher, Commissioner Blumenthal, Commissioner Jacobson

5 - Bike lanes & crosswalks - Barlow

Barlow has been riding his bike around town and has been noticing areas that need paint touch-ups.

6 - Planning Commission - Belcher

Belcher made a motion that the Planning Commission obtain input from the Parks & Trails Commission prior to deliberations on construction requests in City parks.

Motion made by Commissioner Belcher, Seconded by Commissioner Jacobson.

Blumenthal would like to extend the motion to any city utility construction in or near the parks as well. Belcher feels that would be included in his motion language.

Lathrope asked how the Planning Commission would notify them about changes? Jacobson feels that information sent to the commission secretary would be sufficient. Belcher prefers a pre-planning consultation.

Lathrope therefore added an addendum to the motion saying that the information be brought to the Parks & Trails Commission via an email to the current chair two weeks before a Parks & Trails Commission meeting prior to the Planning Commission's deliberations giving the Parks & Trails Commission time to discuss and give opinions back to the Planning Commission.

Jacobson thinks Belcher should talk to the Chair of the Planning Commission before making any motion. Belcher seconded addendum. All yea.

7 - Electric bikes - Blumenthal

Blumenthal claims that there is someone who is riding an electric bike on the trails in Nob Hill Park. Tupper says he will get signs that say pedestrian traffic only for all the entry points.

OLD BUSINESS**8 - Memorial bench - Pettit**

Pettit met with the citizen that wants to put a memorial bench at Dalton Lake. They picked out a few spots but are not quite ready to put it in yet.

STAFF REPORT

Tupper reported that they are busy with sports teams and grass mowing.

Pettit wanted to know if her signs for Dalton Lake are in yet. They are not.

Blumenthal wanted to know what the new gravel at McCormick Park was for. Tupper said it is for a proposed crosswalk for 13 Nights.

Barlow mentioned that someone attempted to break into one of the BMX buildings.

COUNCILOR'S REPORT

Sundeen thanked everyone who attended the Nob Hill work party.

He announced that 13 Nights will officially be at McCormick park.

The City is still looking for volunteers for Citizens Day in the Park. Taylor Thiel would like to meet with Tupper on the 16th of April to walk the parks and talk about removing invasive species.

Tupper mentioned that there will be work done on McCormick Park by PUD to update and upgrade the power at McCormick Park but it shouldn't be damaging.

DISCUSSION ITEMS

Barlow thinks it is weird that the City would buy back buildings that Sand Island LLC built on Sand Island when we don't do the same for other organizations like BMX and sports leagues that put money into City property.

Belcher informed the Commission that Pettit has removed herself from the Urban Trail sub-committee and therefore he is looking for another member.

Nick Hellmich is a proponent of Liberty Hill but it is not City property.

Pettit gave out the handout for the Annual board appreciation dinner.

Pettit would like to have a clean up day on earth day. Many people are not available.

Jacobson created a proposal for a Milton Creek Trail project. He will be giving a presentation to the Port on April 10th with John Walsh. Jacobson said that if there is an issue he can re-frame it to come from the City to the Port.

Pettit said that she talked to Kathy Payne and that it was not appropriate to go to the Port without making a motion to City Council first.

Barlow thinks it is a good idea, but feels it is odd to be at the point of giving a presentation to the Port when this is the first the Parks & Trails Commission is even hearing about it.

Belcher said that he did go on a walk with Jacobson and others and he was kept in the loop with the sub-committee. Pettit claims she is on the sub-committee and did not receive an email or phone call about any of this. Belcher feels that this project is different from Pettit's project and since Jacobson already has permission from the City Administrator and the Port has asked for it, it should move forward. Pettit stated again that the process should be followed of bringing it to the sub-committee, Parks & Trails Commission, then the City.

Jacobson says he is okay with John Walsh giving the presentation instead of him. Sundeen said it would be better coming from the Commission. Sundeen asked if it would hurt to sit down on April 10th and just have an informal discussion instead. Jacobson said he could do that.

Blumenthal gave an update of his work party in Nob Hill last weekend.

ADJOURNMENT 6:03pm

Milton Creek Woodland Reserve Project

Subcommittee Update to St Helens Parks & Trails Commission
May 13, 2024

Objectives

- 1 - Appoint new subcommittee members
- 2 - Review project background and timeline
- 3 - Update on Port presentation
- 4 - Obtain input / feedback on project scope and benefits
- 5 - Obtain input / feedback on draft high-level project timeline, considerations & stakeholders
- 6 - Obtain input / feedback on draft governance structure
- 7 - Arrange site visit for new subcommittee members and interested Commissioners
- 8 - Share observations on Commission and subcommittee ways of working

Subcommittee: Current Members & Vacancies

- Current members:
 - Jerry Belcher
 - Scott Jacobson (co-chair)
 - Vacancy #1
 - Vacancy #2
- Can have up to 4 members without creating quorum issues - looking to appoint 2 new members, as well as appoint a new co-chair
- Brian Long, Jacob Woodruff, and Lynne Petit were previously members
 - Brian resigned from Parks & Trails Commission
 - Jacob unable to participate at present due to other commitments - withdrew prior to April subcommittee meeting
 - At the conclusion of the April subcommittee meeting, Lynne (former co-chair) decided she no longer wanted to be a member - given the work she has put into this project to date, she was asked to reconsider her decision.

Project Background & Timeline Recap

Key Points

- 1 - Building a trail along Milton Creek was identified in the Master Plan in 2015.
- 2 - The P&T Commission site visit in 2022 was a great opportunity to expand our thinking about the possibilities for this area. Designating the area as the "Milton Creek Woodland Reserve" in 2023 highlighted the unique opportunities this project presents.
- 3 - Since the beginning of 2024, we've gained momentum in moving this project forward:
 - Site visits
 - Established a subcommittee to work on this project:
 - Big piece of work with many interconnected parts that need to be jointly coordinated
 - Team based approach drawing on members' different skills sets and strengths
 - Engaged with both City and Port
 - Began project scoping

2015

2.58 mile long regional trail following Milton Creek from McCormick Park to riverfront identified in Parks & Trails Master Plan

2022

Site visit to old Boise playground and picnic area by members of the St Helens Parks & Trails Commission, along with current Councilor Brandon Sundeen and former Councilor Patrick Birkle

Began initial discussions about possible recreational uses for this property

2023

Commission officially named project "Milton Creek Woodland Reserve"

Project Background & Timeline Recap (con't)

Jan 2024

Scott Jacobson and Patrick Birkle conducted initial site assessments of Port of Columbia County property on south and west side of Milton Creek with a view to creating a joint City and Port loop trail

P&T Commission Meeting:

Scott Jacobson gave update on site assessments

Lynne Petit mentioned she had been working on a PowerPoint related to Milton Creek

Feb 2024

P&T Commission Meeting:

Scott Jacobson updated Commission on Port site assessments; Lynne Petit mentioned again that she had been working on a PowerPoint related to Milton Creek

Parks & Trails Commission created Milton Creek Woodland Reserve subcommittee to take this project forward

Members appointed:

- Jerry Belcher
- Scott Jacobson (co-chair)
- Brian Long
- Lynne Petit (co-chair)
- Jacob Woodruff

Mar 2024

P&T Commission Meeting:

Scott Jacobson updated commission re: planned meeting with Port staff to gauge interest in developing a joint loop trail and to discuss other related possible initiatives

Scott Jacobson and Patrick Birkley met with Port staff (Sean Clark and Lacey Tolles); Sean Clark discussed importance of taking inclusive approach and involving more people / stakeholders in project

Port reaction positive - St Helens Parks & Trails Commission invited to make a presentation at the April Port of Columbia County Commission meeting

Scott Jacobson attended OSU extension seminar on trail building

Project Background & Timeline Recap (con't)

Apr 2024

Draft Port presentation circulated to subcommittee for input and feedback in advance of P&T Commission meeting, as well as to John Walsh and Sean Clark

P&T Commission Meeting:

- Lynne Petit shared Milton Creek Woodland Reserve presentation (subcommittee had no involvement)
- Scott Jacobson shared draft Port presentation

Port presentation finalized and sent to subcommittee; subcommittee members asked to co-present at Port meeting

Presentation to Port by John Walsh and members of subcommittee (Jerry Belcher and Scott Jacobson)

Subcommittee meeting with Councilor Sundeen in attendance

Follow-up email to John Walsh and Sean Clark thanking them for their support and to arrange for site visit and discussion of next steps

City Council Meeting:

Brief update by John Walsh re: Port meeting and by Brandon Sundeen re: subcommittee work on project

Draft high-level project timeline etc. prepared for P&T Commission to seek input and feedback at May meeting

Additional site visit by Jerry Belcher - photos of camas fields

Port Presentation Update

- Presentation to Port of Columbia County Commissioners on April 10, 2024 by John Walsh, Jerry Belcher, and Scott Jacobson
- Purpose of presentation was to explore possible joint uses of City and Port property including a joint trail and other related initiatives; there was no expectation that decisions would be made
- Initial reception was positive
- Subcommittee will scope out proposed trail and other potential related initiatives as part of developing the draft Milton Creek Woodland Reserve project plan / proposal
- City and Port staff will work on logistical side of things in parallel

Project Scope (for P&T Commission Input / Feedback)

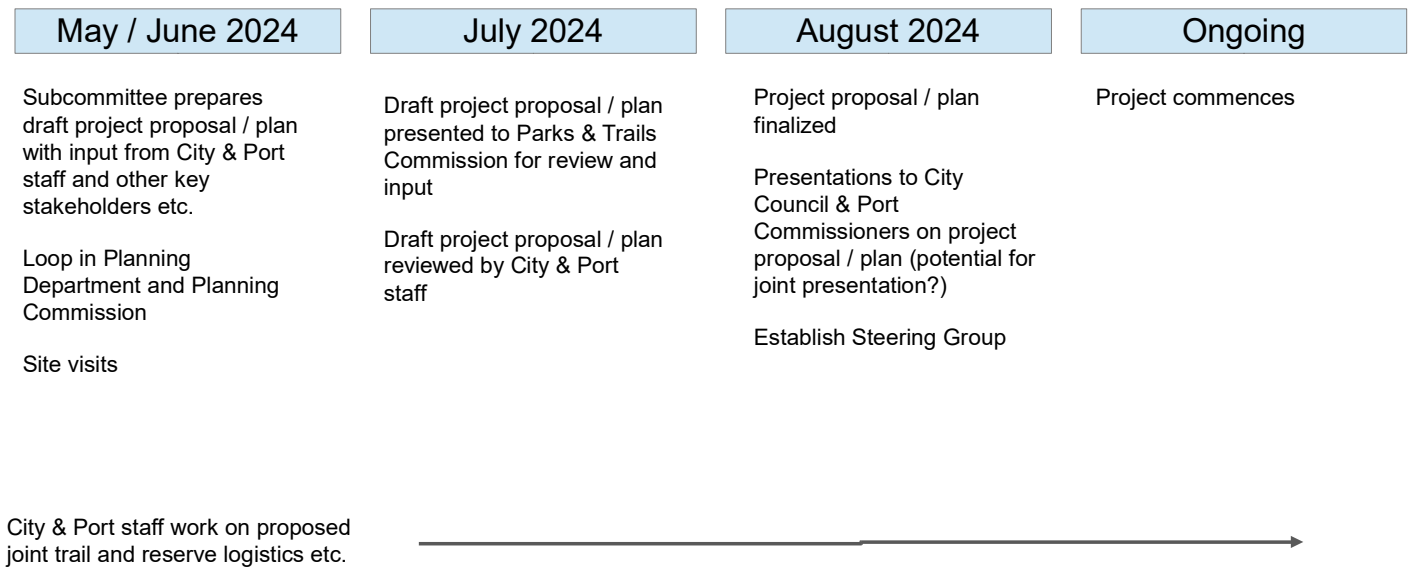
The Milton Creek Woodland Reserve subcommittee is tasked with preparing and implementing a project proposal and plan relating to:

- The possibility of establishing a reserve on City and Port property;
- The Milton Creek Trail identified in the Master Plan;
- The potential expansion of this trail working in conjunction with the Port;
- The potential to connect the trail to a broader network of trails;
- Other related initiatives as identified by the Commission, subcommittee, and key stakeholders;
- Input on the communications and stakeholder management approach; and
- Funding and resourcing options.

Project Benefits (for P&T Commission Input / Feedback)

- Preserving a unique setting with mature vegetation (oak and fir trees), native flora and fauna (e.g., camas fields, area being extensively used by eagles presently), and a creek which is home to several native fish species
- Mitigating local climate change impacts through preservation of forest land
- Providing opportunities for environmental and biology education
- Highlighting historic and prehistoric components (e.g., quarry sites / paving stones, Native American sites)
- Setting aside undeveloped land for public use and creating recreational opportunities
- Drawing visitors to the area to enjoy the trail and other local amenities and businesses
- Reducing wildfire through increased utilization and oversight of property
- Creating collaboration and partnership opportunities between county, city, and other key stakeholders

Draft High-level (Optimistic) Project Timeline (for P&T Commission Input / Feedback)



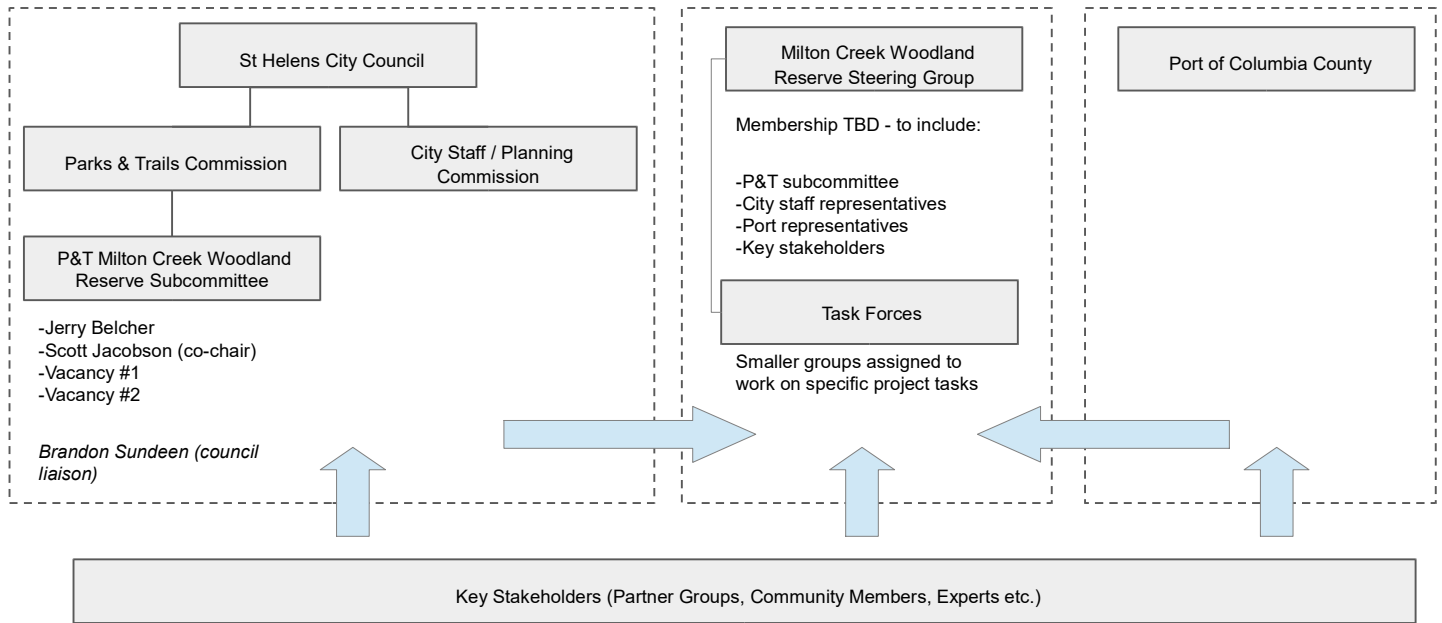
Things to Consider When Developing Draft Project Proposal / Plan (for P&T Commission Input / Feedback)

- Phasing
 - This will be a multi-year project - factor in resource and funding availability, Port / City logistics etc.
 - Structuring in phases will allow us to maintain momentum and celebrate progress as each phase completed
- Land use options
 - While there is a desire to set aside all of the land on the City side as a reserve, given potential value of land as an industrial site, we may need to consider scaled-back options (e.g., limited corridor along Milton Creek)
 - Importance of looping in Planning Department and Planning Commission during early stages of project proposal / plan development
 - Prioritizing areas (e.g., camas field, mature stands of trees, prehistoric / historic sites)
 - Creek - 50' upland protection zone, impacts regulated
 - 5 acre substation proposed on City property
- Picnic and / or playground area
 - Do we want to reestablish a picnic and / or playground area? If so, where? How many?
- Identifying other related initiatives - fully scoping out project options
- Funding - need to identify potential funding sources / options
- City and Port staff working on logistical side of things in parallel with subcommittee work on draft project proposal / plan - need to liaise with them with possible input
- Engaging with stakeholders prior to formal project commencement
- Other?

Draft Stakeholder List (for P&T Commission Input / Feedback)

- Environmental groups - e.g., Coast Conservation Association, Osprey, Scappoose Bay Watershed Council etc.
- Historic preservation groups - e.g., SHPO, Columbia County Museum etc.
- First American groups (potentially tie in with work St Helens Library plans to do on land and peoples acknowledgment?)
- Community members - e.g., Patrick Birkle (been involved with project since outset, key contributor), others?
- Experts
 - Some individuals may have already been communicated with and may have been unaware of the subcommittee's work causing confusion; need to close the loop with them
 - What other expertise do we need to draw on - e.g., educators
- Others?

Draft Governance Model (for P&T Commission Input / Feedback)



Site Visit: Proposed Dates / Times

- Purpose is to familiarize subcommittee members and other interested commissioners with site on both City and Port sides of Milton Creek and discuss project
- Other community members may be invited to join
- Need to keep quorum issues / notification process in mind
- Option 1 - Saturday May 18th
- Option 2 - Saturday May 25th (Note: this is Memorial Day weekend)
- Other options?

Note: There is poison oak on site

Milton Creek Woodland Reserve Project

Subcommittee Update to St Helens Parks & Trails Commission

May 13, 2024

Objectives

- 1 - Appoint new subcommittee members
- 2 - Review project background and timeline
- 3 - Update on Port presentation
- 4 - Obtain input / feedback on project scope and benefits
- 5 - Obtain input / feedback on draft high-level project timeline, considerations & stakeholders
- 6 - Obtain input / feedback on draft governance structure
- 7 - Arrange site visit for new subcommittee members and interested Commissioners
- 8 - Share observations on Commission and subcommittee ways of working

Subcommittee: Current Members & Vacancies

- Current members:
 - Jerry Belcher
 - Scott Jacobson (co-chair)
 - Vacancy #1
 - Vacancy #2
- Can have up to 4 members without creating quorum issues - looking to appoint 2 new members, as well as appoint a new co-chair
- Brian Long, Jacob Woodruff, and Lynne Petit were previously members
 - Brian resigned from Parks & Trails Commission
 - Jacob unable to participate at present due to other commitments - withdrew prior to April subcommittee meeting
 - At the conclusion of the April subcommittee meeting, Lynne (former co-chair) decided she no longer wanted to be a member - given the work she has put into this project to date, she was asked to reconsider her decision.

Project Background & Timeline Recap

Key Points

- 1 - Building a trail along Milton Creek was identified in the Master Plan in 2015.
- 2 - The P&T Commission site visit in 2022 was a great opportunity to expand our thinking about the possibilities for this area. Designating the area as the “Milton Creek Woodland Reserve” in 2023 highlighted the unique opportunities this project presents.
- 3 - Since the beginning of 2024, we’ve gained momentum in moving this project forward:
 - Site visits
 - Established a subcommittee to work on this project:
 - Big piece of work with many interconnected parts that need to be jointly coordinated
 - Team based approach drawing on members’ different skills sets and strengths
 - Engaged with both City and Port
 - Began project scoping

2015

2.58 mile long regional trail following Milton Creek from McCormick Park to riverfront identified in Parks & Trails Master Plan

2022

Site visit to old Boise playground and picnic area by members of the St Helens Parks & Trails Commission, along with current Councilor Brandon Sundeen and former Councilor Patrick Birkle

2023

Began initial discussions about possible recreational uses for this property

Commission officially named project “Milton Creek Woodland Reserve”

Project Background & Timeline Recap (con't)

Jan 2024

Scott Jacobson and Patrick Birkle conducted initial site assessments of Port of Columbia County property on south and west side of Milton Creek with a view to creating a joint City and Port loop trail

P&T Commission Meeting:

Scott Jacobson gave update on site assessments

Lynne Petit mentioned she had been working on a PowerPoint related to Milton Creek

Feb 2024

P&T Commission Meeting:

Scott Jacobson updated Commission on Port site assessments; Lynne Petit mentioned again that she had been working on a PowerPoint related to Milton Creek

Parks & Trails Commission created Milton Creek Woodland Reserve subcommittee to take this project forward

Members appointed:

- Jerry Belcher
- Scott Jacobson (co-chair)
- Brian Long
- Lynne Petit (co-chair)
- Jacob Woodruff

Mar 2024

P&T Commission Meeting:

Scott Jacobson updated commission re: planned meeting with Port staff to gauge interest in developing a joint loop trail and to discuss other related possible initiatives

* * *

Scott Jacobson and Patrick Birkley met with Port staff (Sean Clark and Lacey Tolles); Sean Clark discussed importance of taking inclusive approach and involving more people / stakeholders in project

Port reaction positive - St Helens Parks & Trails Commission invited to make a presentation at the April Port of Columbia County Commission meeting

* * *

Scott Jacobson attended OSU extension seminar on trail building

Project Background & Timeline Recap (con't)

Apr 2024

Draft Port presentation circulated to subcommittee for input and feedback in advance of P&T Commission meeting, as well as to John Walsh and Sean Clark

* * *

P&T Commission Meeting:
-Lynne Petit shared Milton Creek Woodland Reserve presentation (subcommittee had no involvement)
-Scott Jacobson shared draft Port presentation

Port presentation finalized and sent to subcommittee; subcommittee members asked to co-present at Port meeting

* * *

Presentation to Port by John Walsh and members of subcommittee (Jerry Belcher and Scott Jacobson)

Subcommittee meeting with Councilor Sundeen in attendance

* * *

Follow-up email to John Walsh and Sean Clark thanking them for their support and to arrange for site visit and discussion of next steps

City Council Meeting:

Brief update by John Walsh re: Port meeting and by Brandon Sundeen re: subcommittee work on project

* * *

Draft high-level project timeline etc. prepared for P&T Commission to seek input and feedback at May meeting

* * *

Additional site visit by Jerry Belcher - photos of camas fields

Port Presentation Update

- Presentation to Port of Columbia County Commissioners on April 10, 2024 by John Walsh, Jerry Belcher, and Scott Jacobson
- Purpose of presentation was to explore possible joint uses of City and Port property including a joint trail and other related initiatives; there was no expectation that decisions would be made
- Initial reception was positive
- Subcommittee will scope out proposed trail and other potential related initiatives as part of developing the draft Milton Creek Woodland Reserve project plan / proposal
- City and Port staff will work on logistical side of things in parallel

Project Scope (for P&T Commission Input / Feedback)

The Milton Creek Woodland Reserve subcommittee is tasked with preparing and implementing a project proposal and plan relating to:

- The possibility of establishing a reserve on City and Port property;
- The Milton Creek Trail identified in the Master Plan;
- The potential expansion of this trail working in conjunction with the Port;
- The potential to connect the trail to a broader network of trails;
- Other related initiatives as identified by the Commission, subcommittee, and key stakeholders;
- Input on the communications and stakeholder management approach; and
- Funding and resourcing options.

Project Benefits (for P&T Commission Input / Feedback)

- Preserving a unique setting with mature vegetation (oak and fir trees), native flora and fauna (e.g., camas fields, area being extensively used by eagles presently), and a creek which is home to several native fish species
- Mitigating local climate change impacts through preservation of forest land
- Providing opportunities for environmental and biology education
- Highlighting historic and prehistoric components (e.g., quarry sites / paving stones, Native American sites)
- Setting aside undeveloped land for public use and creating recreational opportunities
- Drawing visitors to the area to enjoy the trail and other local amenities and businesses
- Reducing wildfire through increased utilization and oversight of property
- Creating collaboration and partnership opportunities between county, city, and other key stakeholders

Draft High-level (Optimistic) Project Timeline (for P&T Commission Input / Feedback)

May / June 2024

Subcommittee prepares draft project proposal / plan with input from City & Port staff and other key stakeholders etc.

July 2024

Loop in Planning Department and Planning Commission

Draft project proposal / plan presented to Parks & Trails Commission for review and input

Draft project proposal / plan reviewed by City & Port staff

August 2024

Site visits

Project proposal / plan finalized

Presentations to City Council & Port

Commissioners on project proposal / plan (potential for joint presentation?)

Establish Steering Group

Ongoing

Project commences

City & Port staff work on proposed joint trail and reserve logistics etc.



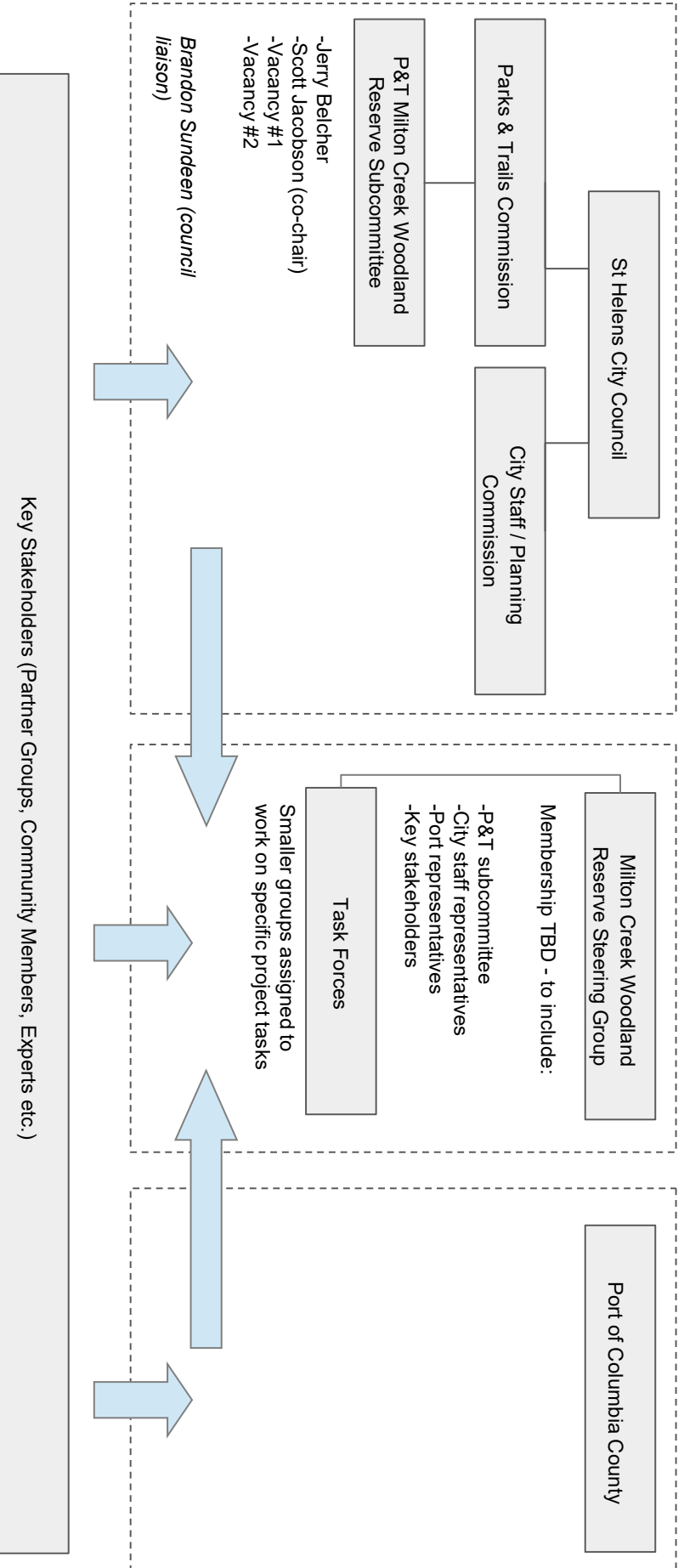
Things to Consider When Developing Draft Project Proposal / Plan (for P&T Commission Input / Feedback)

- Phasing
 - This will be a multi-year project - factor in resource and funding availability, Port / City logistics etc.
 - Structuring in phases will allow us to maintain momentum and celebrate progress as each phase completed
- Land use options
 - While there is a desire to set aside all of the land on the City side as a reserve, given potential value of land as an industrial site, we may need to consider scaled-back options (e.g., limited corridor along Milton Creek)
 - Importance of looping in Planning Department and Planning Commission during early stages of project proposal / plan development
 - Prioritizing areas (e.g., camas field, mature stands of trees, prehistoric / historic sites)
 - Creek - 50' upland protection zone, impacts regulated
 - 5 acre substation proposed on City property
- Picnic and / or playground area
 - Do we want to reestablish a picnic and / or playground area? If so, where? How many?
- Identifying other related initiatives - fully scoping out project options
- Funding - need to identify potential funding sources / options
- City and Port staff working on logistical side of things in parallel with subcommittee work on draft project proposal / plan - need to liaise with them with possible input
- Engaging with stakeholders prior to formal project commencement
- Other?

Draft Stakeholder List (for P&T Commission Input / Feedback)

- Environmental groups - e.g., Coast Conservation Association, Osprey, Scappoose Bay Watershed Council etc.
- Historic preservation groups - e.g., SHPO, Columbia County Museum etc.
- First American groups (potentially tie in with work St Helens Library plans to do on land and peoples acknowledgment?)
- Community members - e.g., Patrick Birkle (been involved with project since outset, key contributor), others?
- Experts
 - Some individuals may have already been communicated with and may have been unaware of the subcommittee's work causing confusion; need to close the loop with them
 - What other expertise do we need to draw on - e.g., educators
- Others?

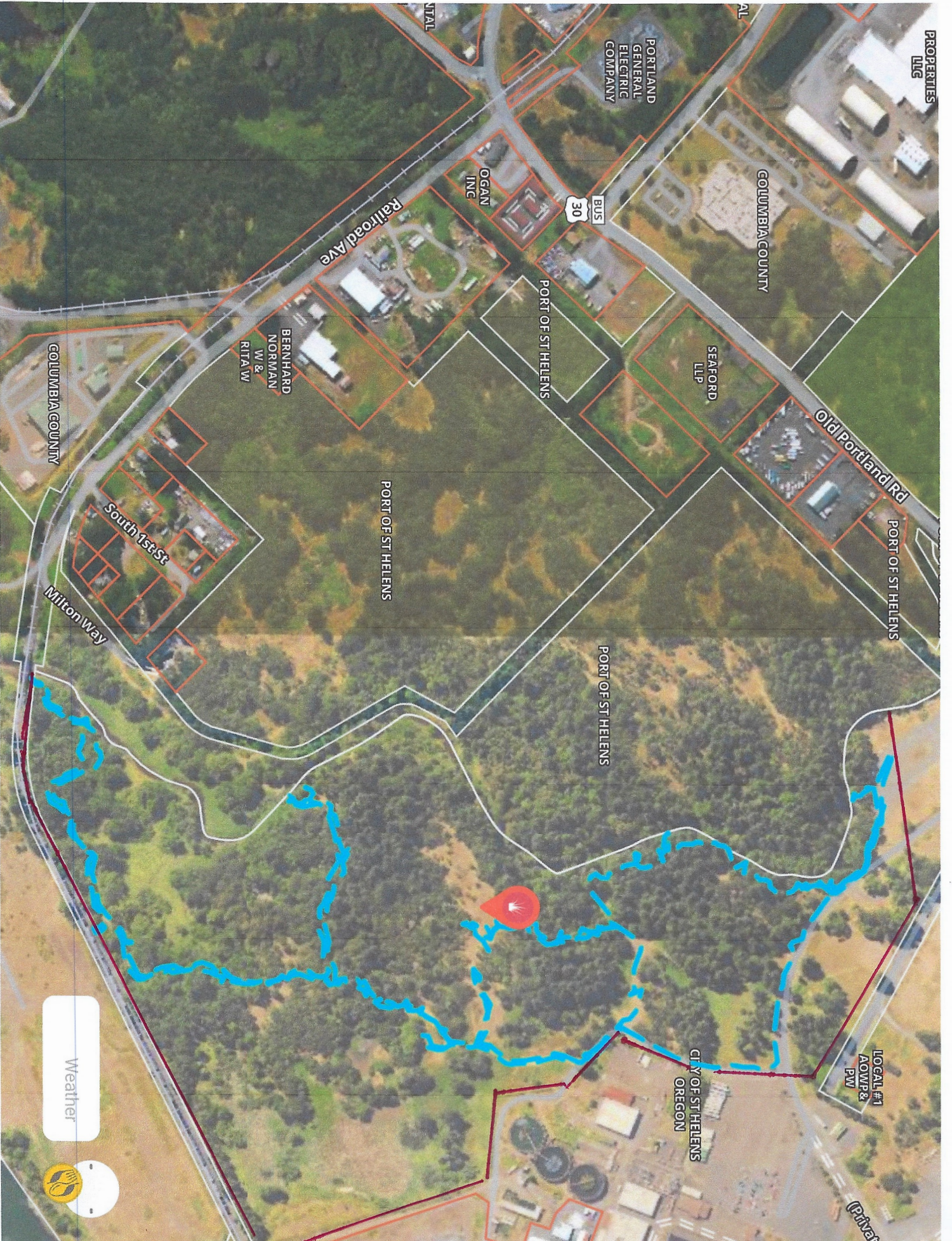
Draft Governance Model (for P&T Commission Input / Feedback)



Site Visit: Proposed Dates / Times

- Purpose is to familiarize subcommittee members and other interested commissioners with site on both City and Port sides of Milton Creek and discuss project
- Other community members may be invited to join
- Need to keep quorum issues / notification process in mind
- Option 1 - Saturday May 18th
- Option 2 - Saturday May 25th (Note: this is Memorial Day weekend)
- Other options?

Note: There is poison oak on site



PROPERTIES LLC

PORTLAND GENERAL ELECTRIC COMPANY

COLUMBIA COUNTY

BUS 30

Railroad Ave

OGAN INC

PORT OF ST. HELENS

SEAFORD LLP

Old Portland Rd

PORT OF ST. HELENS

BERNHARD NORMAN W & RITA W

PORT OF ST. HELENS

South 1st St

Milton Way

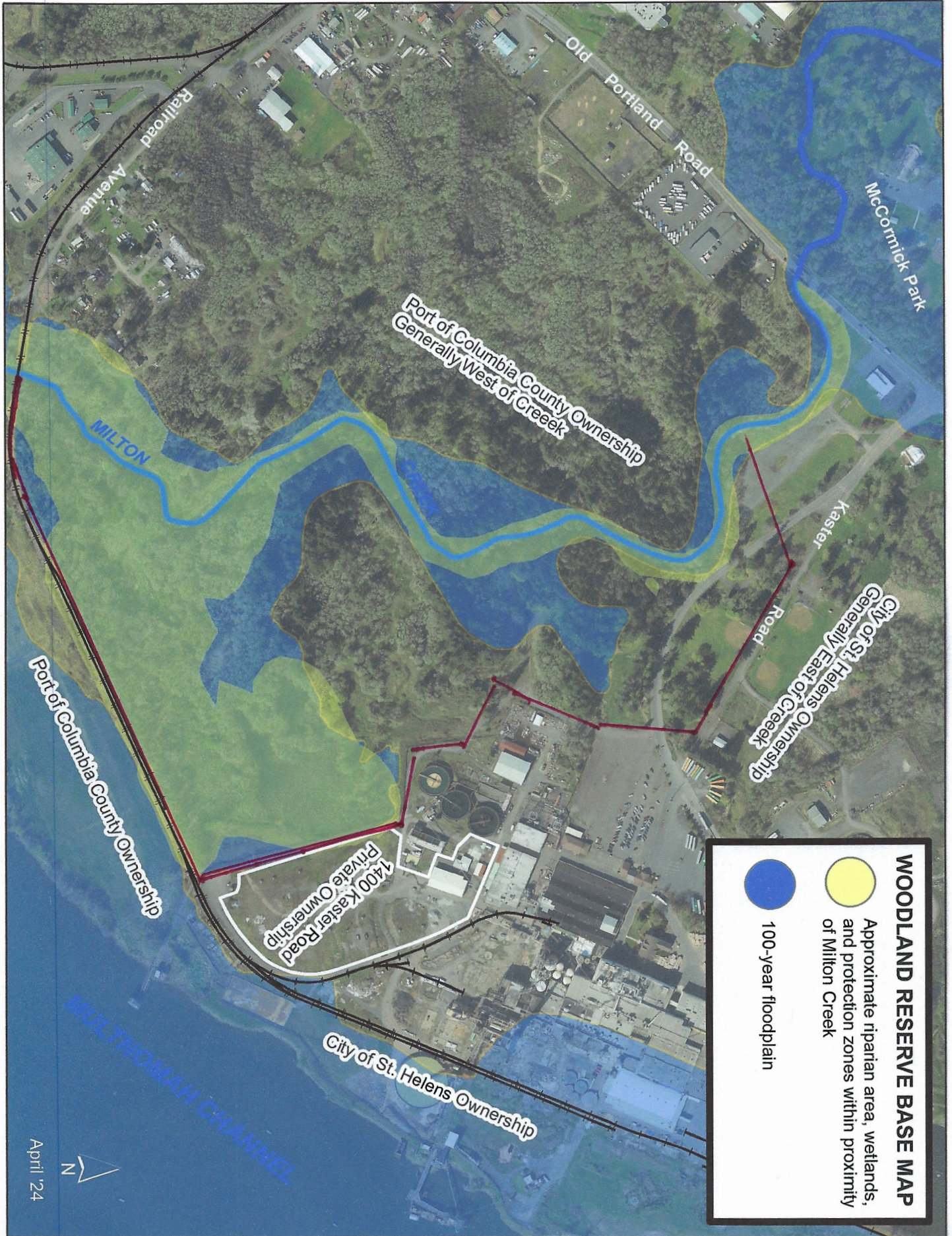
PORT OF ST. HELENS

LOCAL #1 AOWP& PW

CITY OF ST. HELENS OREGON

Weather





WOODLAND RESERVE BASE MAP

Approximate riparian area, wetlands, and protection zones within proximity of Milton Creek



100-year floodplain



April '24

