



## COUNCIL SPECIAL SESSION

Wednesday, August 04, 2021 at 6:00 PM

---

### COUNCIL MEMBERS:

Mayor Rick Scholl  
Council President Doug Morten  
Councilor Patrick Birkle  
Councilor Stephen R. Topaz  
Councilor Jessica Chilton

### LOCATION & CONTACT:

Council Chambers, 265 Strand Street, St. Helens  
Website | [www.sthelensoregon.gov](http://www.sthelensoregon.gov)  
Email | [kpayne@sthelensoregon.gov](mailto:kpayne@sthelensoregon.gov)  
Phone | 503-397-6272  
Fax | 503-397-4016

---

## AGENDA

### CALL SPECIAL SESSION TO ORDER

### DISCUSSION TOPICS

1. Riverwalk Project Design Alternatives Presentation - *Mayer/Reed*

### ADJOURN

---

The St. Helens City Council Chambers are handicapped accessible. If you wish to participate or attend the meeting and need special accommodation, please contact City Hall at 503-397-6272 in advance of the meeting.

Be a part of the vision...Get involved with your City...Volunteer for a City of St. Helens Board or Commission!

For more information or for an application, stop by City Hall or call 503-366-8217.



# St. Helens Riverwalk City Council Special Meeting

August 4, 2021



TAC Members:

Dan Cary, Planning Commission & Oregon DSL  
Jennifer Dimsho, City Planner  
Sue Nelson, City Engineer  
John Walsh, City Administrator  
Mouhamad Zaher, Public Works Director

Council Attendees:

Stephen Topaz \_\_\_\_\_  
Rick Scholl \_\_\_\_\_  
Doug Morten \_\_\_\_\_  
Patrick Birkle ] \_\_\_\_\_  
Jessica Chilton ] \_\_\_\_\_

TAC Meetings:

- #1: Kickoff & Goal Setting
- #2: Permitting Strategy Session
- #3: Riverwalk Programming Alternatives
- #4: Phase 1 Alternatives

Other Meetings:

Public Forum & Online Survey  
Interpretive Focus Group Meetings

### Project Goals:

- Provide **public access** to the waterfront for residents and visitors of all ages and abilities.
- Capture the **unique energy and authenticity** of St. Helens.
- Celebrate its long **history**.
- Protect and improve the local **ecology and habitat**.
- Emphasize **resiliency** by reducing risk against climate change and using sustainable materials.



May 19, 2021 Public Forum / 40+ Attendees / 471 Online survey responses

Top Priorities:



Pathway



Viewpoints  
Seating  
Overlooks



Paddlecraft  
Launch



Wildlife Habitat  
Improvements



Shoreline  
Access



Gathering Space  
Picnic Area  
Lounging  
Socializing



Outdoor Dining  
Relationship to Private  
Development



Playscapes



Fishing  
Channel  
River



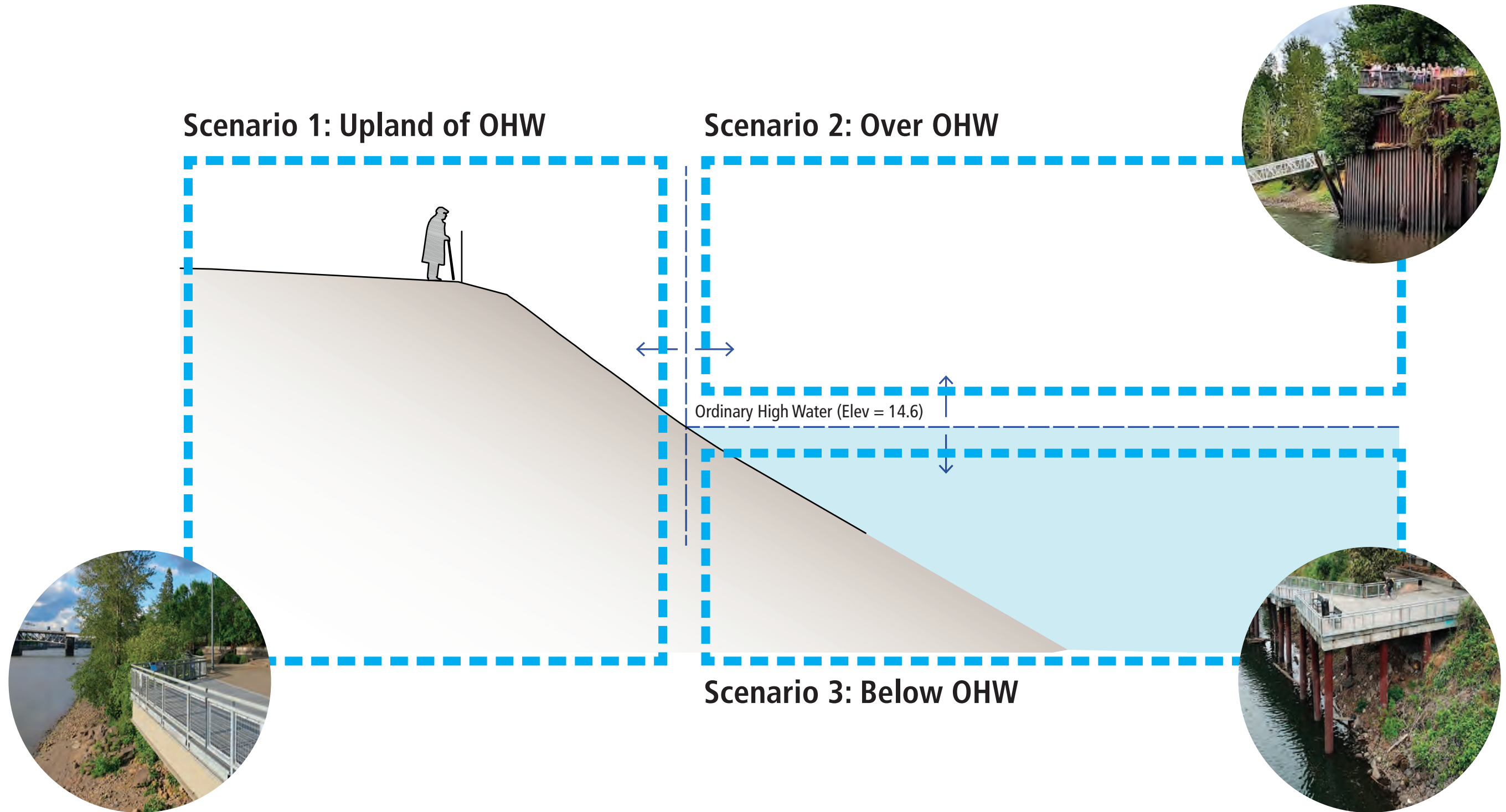
Other Considerations:

Special Opportunity  
Area

Potential Marina

Restrooms & Storage







## Audience

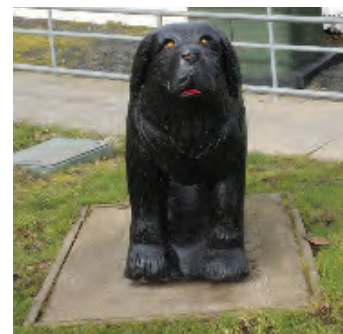
Riverwalk wayfinding and interpretive signs will be designed as an extension of the St. Helen’s wayfinding masterplan sign system.

St. Helens Area  
Residents  
Primary Audience

Regional  
Residents  
Secondary Audience

Visitors  
from Afar

Existing Elements / Character



Inspiration Images







Main Theme:

The City of St. Helens is shaped by the connectivity, sustenance and awe-inspiring beauty of the Columbia River.

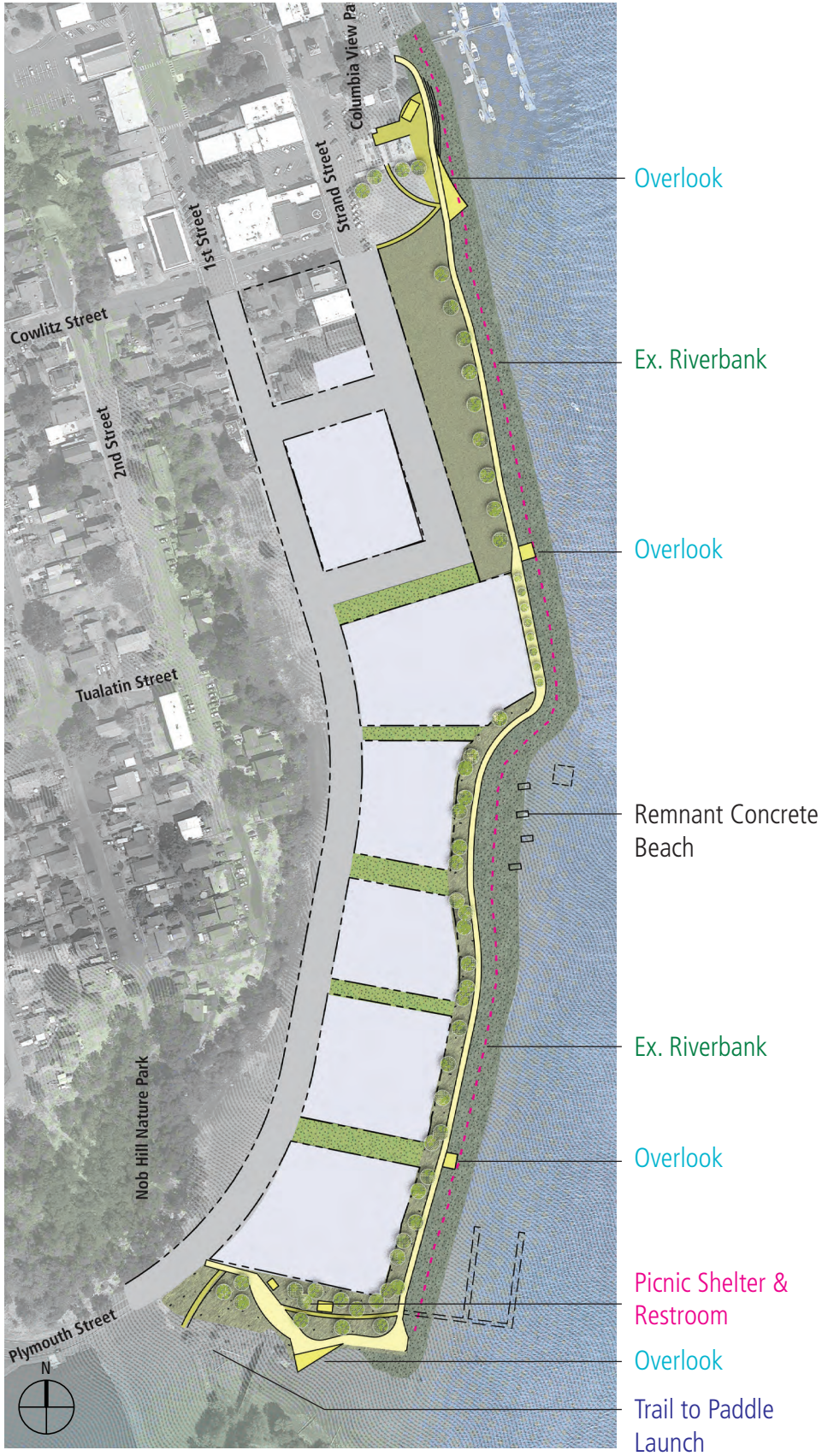
Subthemes:

- This site was created by geological events that shaped the mountains, river and landforms.
- The thriving ecosystem is rich with native vegetation, wildlife viewing, fishing and recreation.
- Before the City of St. Helens was founded, the Wapato Valley people occupied a large area at the confluence of the Columbia and Willamette Rivers, including the Gatlakmap village in the vicinity of present-day St. Helens.
- This port has provided ease of transportation and trade to industries such as ship building, a quarry, a mill and now offers views of the modern-day shipping channel.





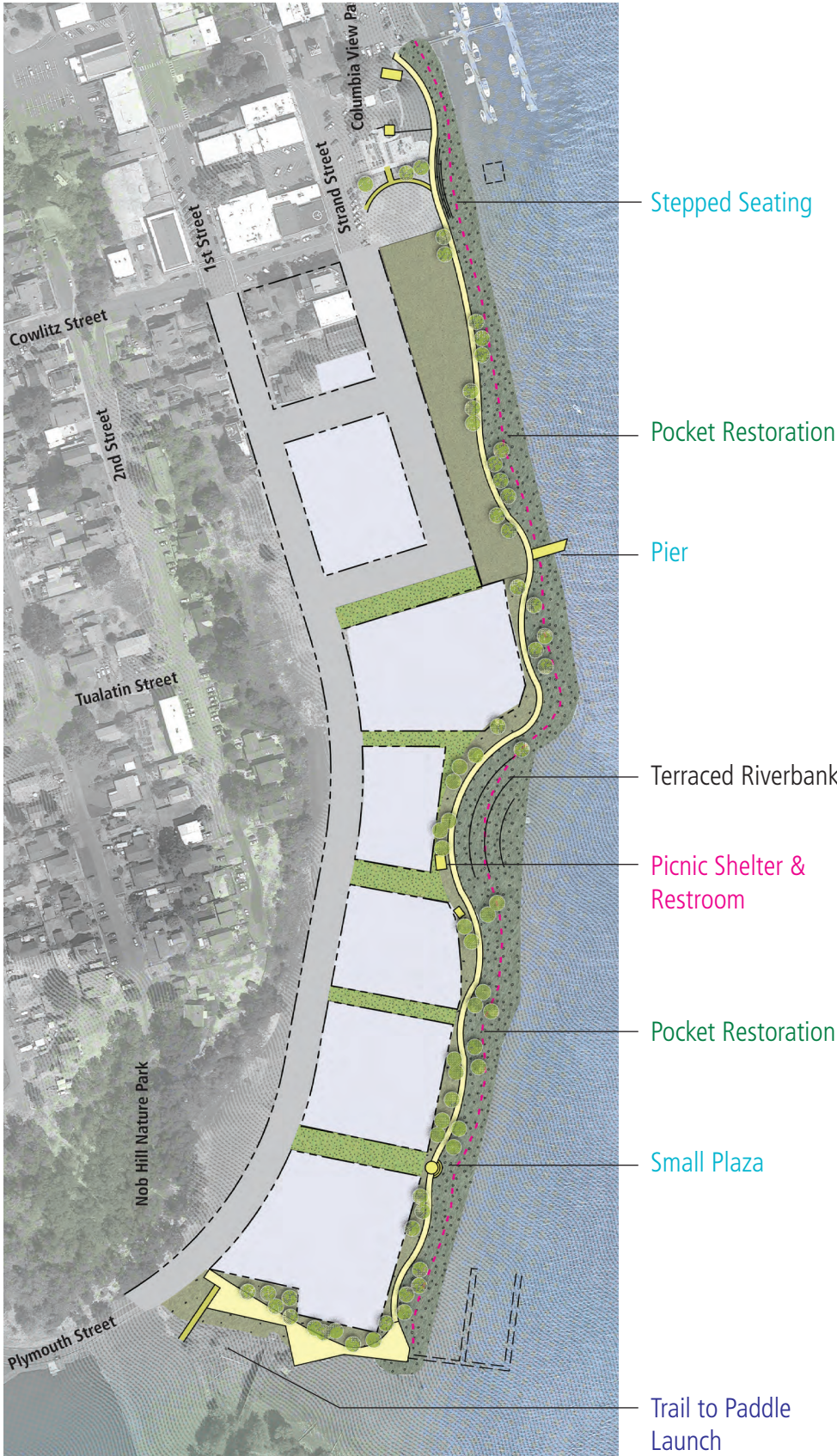
A | Bring the City to the River



B | Bring the River to the City



C | Push/Pull of River and City







Legend

	Upland Area		Ex. Riverbank
	Improved Riverbank		Rocky Beach
	Riverwalk Pathway		Secondary Pathway
	Setback from Ex. Top of Bank		







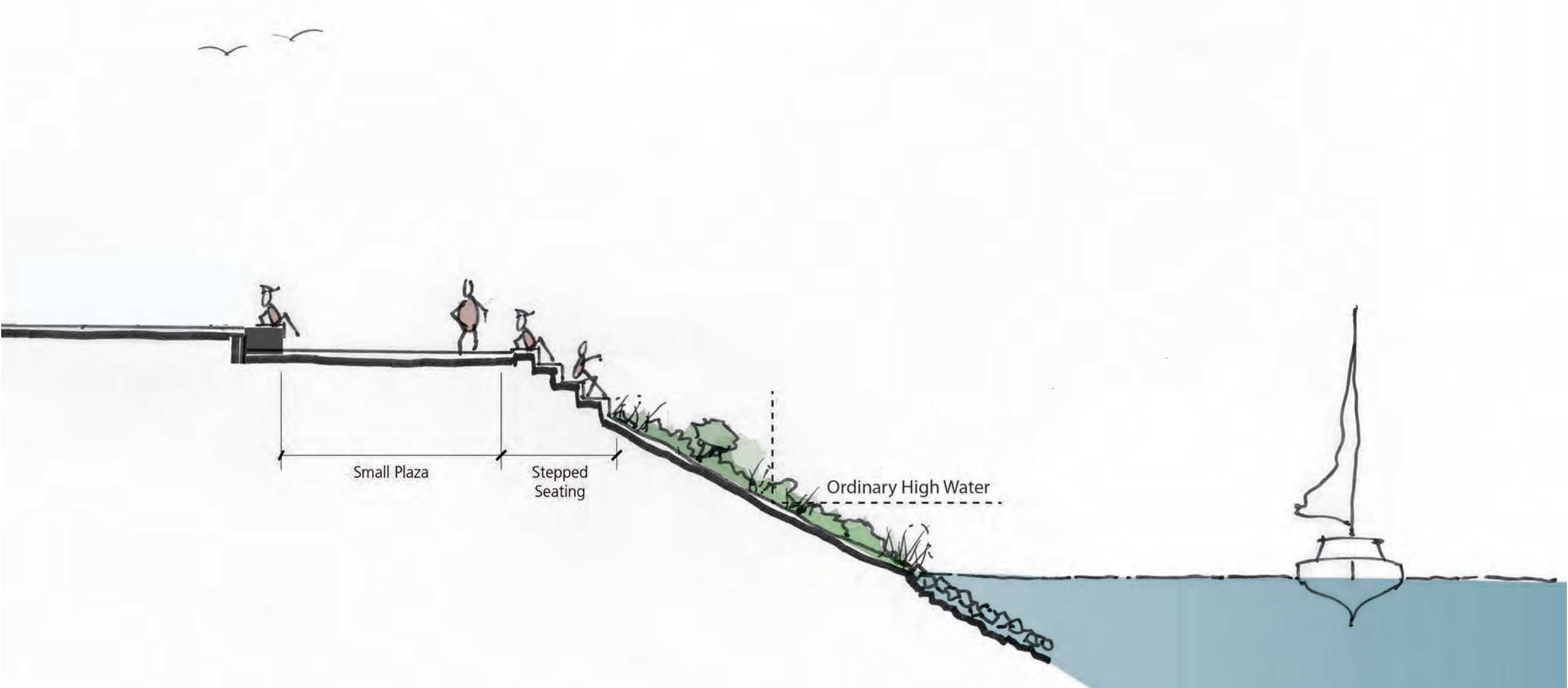
- Overlook cantilevered over water, off existing sheet pile wall.
- Paddle launch under trestle via trail. Loading area provided off 1st Street.
- Riverwalk within 100ft setback from existing top of bank.
- Future marina can be incorporated off east bank in river channel. Avoids conflict between marina users and paddle launch area in the slough.
- Opportunity for adjacent private development to support recreational hub uses.







- Small plaza with stepped seating built into top of bank.
- Aligns with connection to Nob Hill Nature Park.

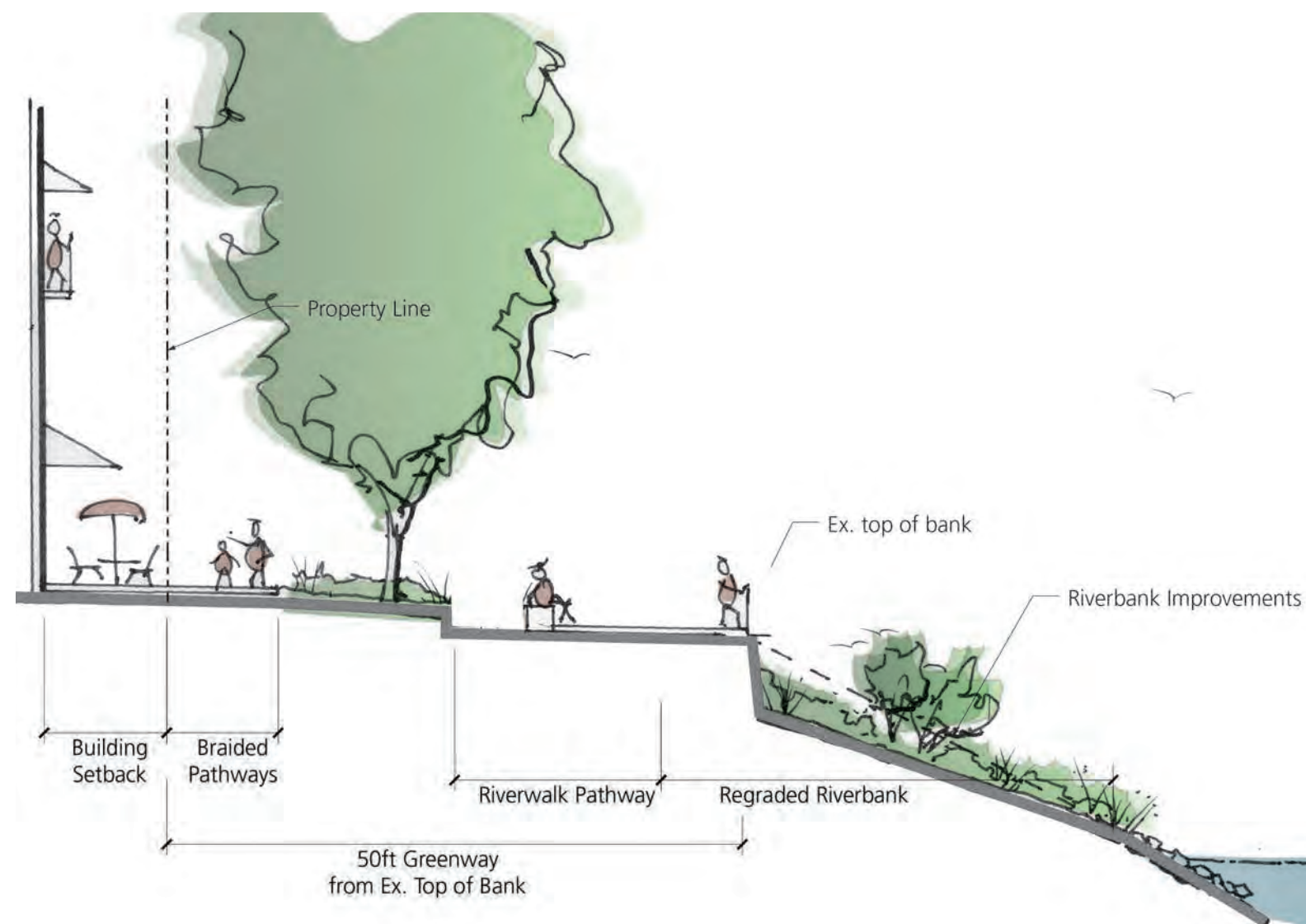




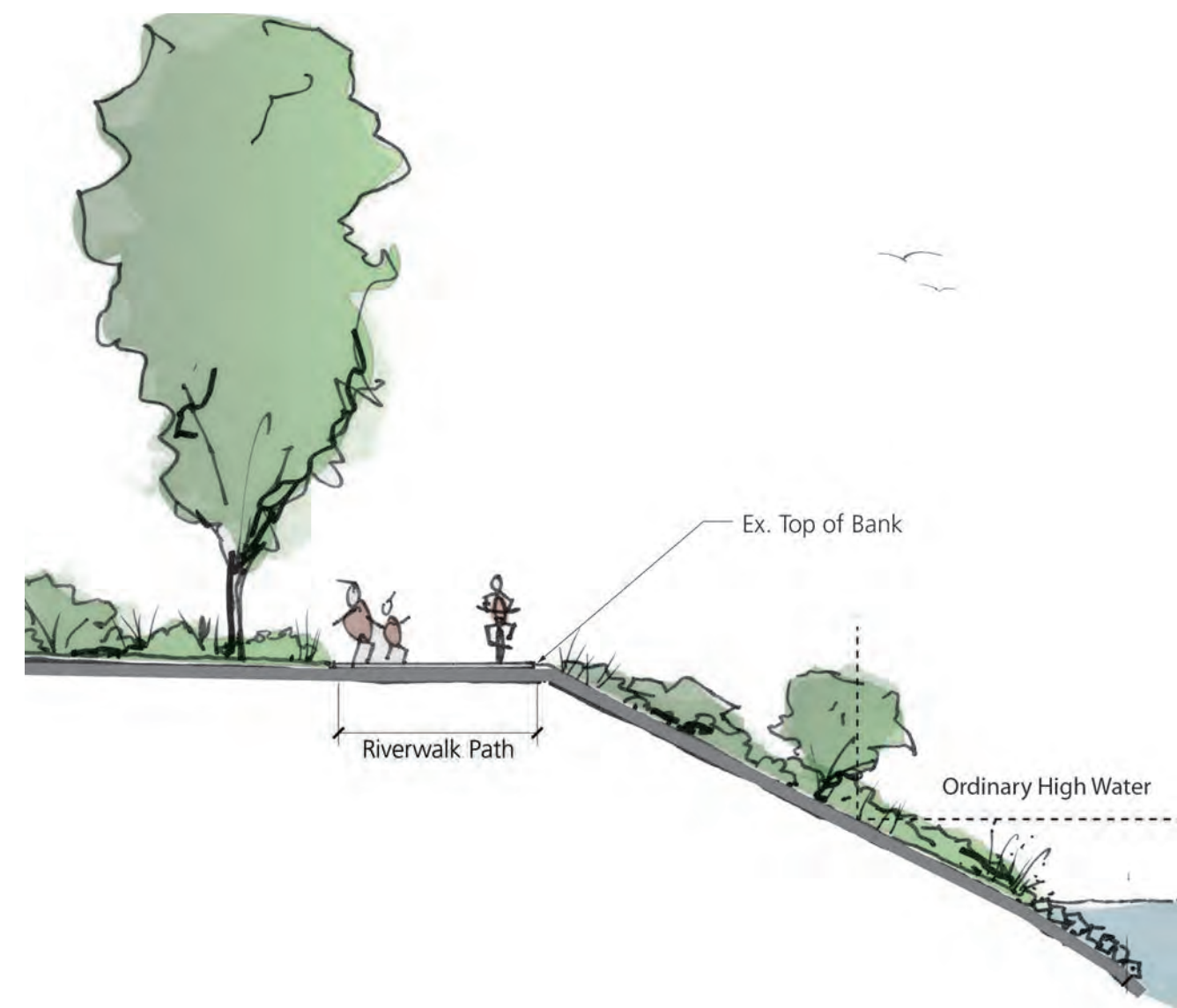
# Preferred Concept Riverwalk Typical Section - South



- Main pathway follows top of bank.
- Curves create pockets of riverbank restoration, regraded all the way to top of bank, with other areas relying on retaining walls for less significant regrading.
- Secondary, braided pathways may connect to adjacent private development or provide additional points of interest for path users.

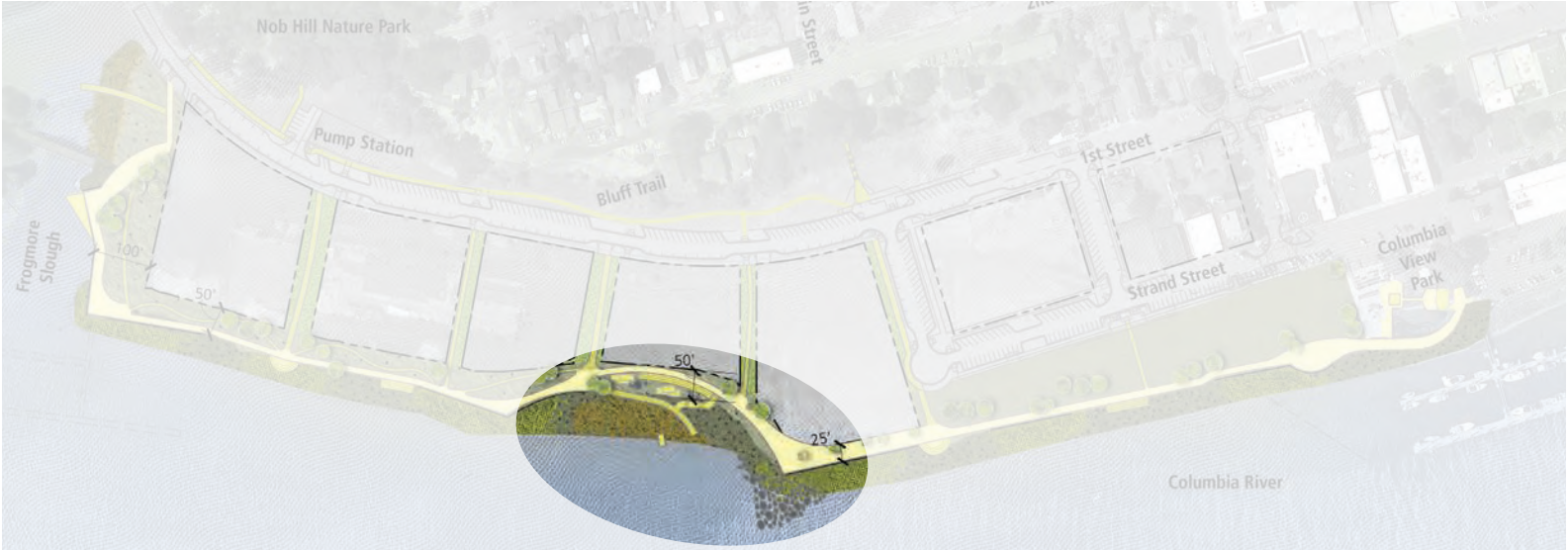


Riverwalk at Regraded Riverbank

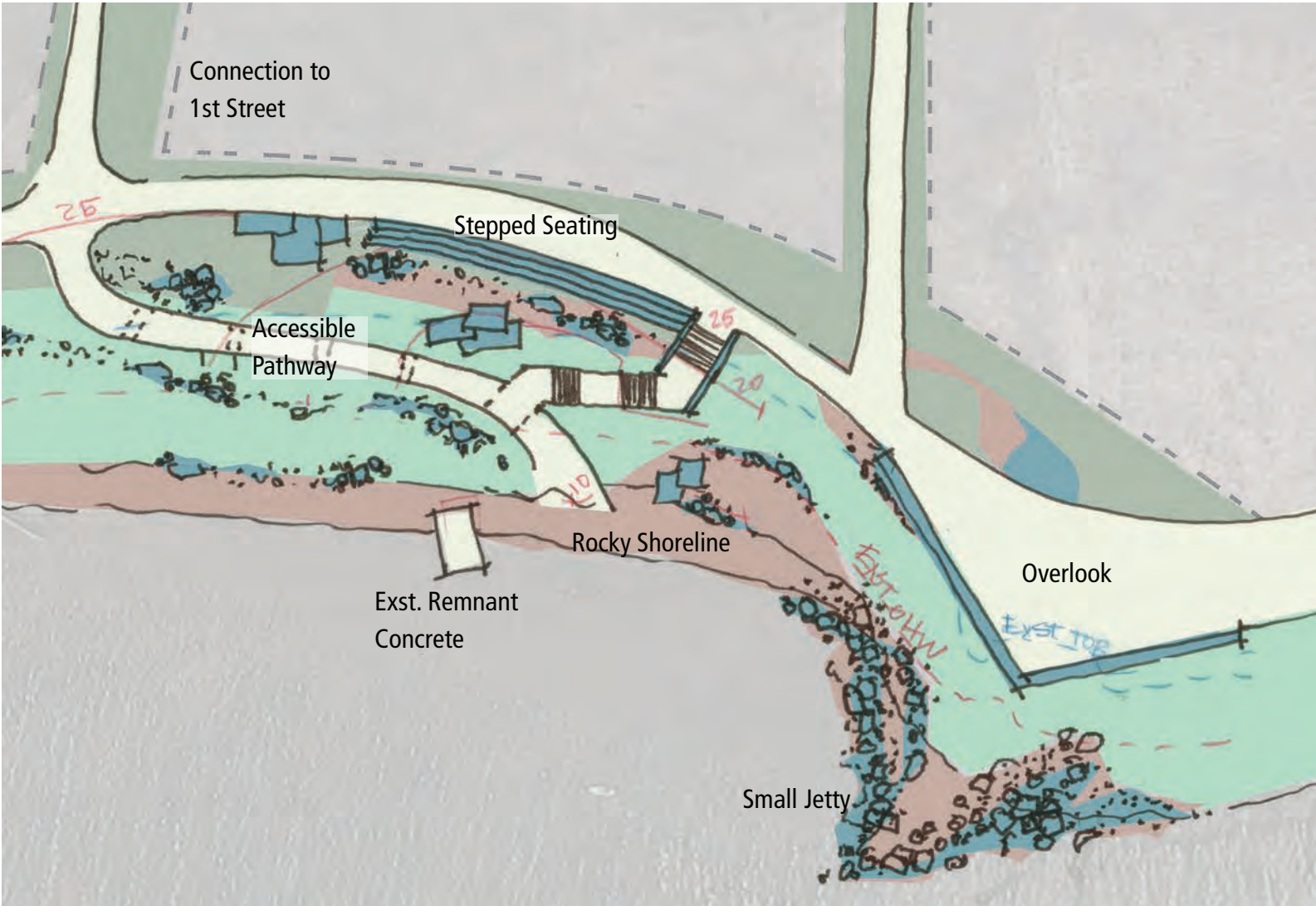


Riverwalk at Existing Riverbank





- Riverwalk within 50ft setback from existing top of bank.
- Accessible pathway and stairs down to shoreline.
- Rocky beach and small jetty invites scrambling and exploring. Rocks and riparian plantings secure slope.
- Overlook opportunity above small jetty.



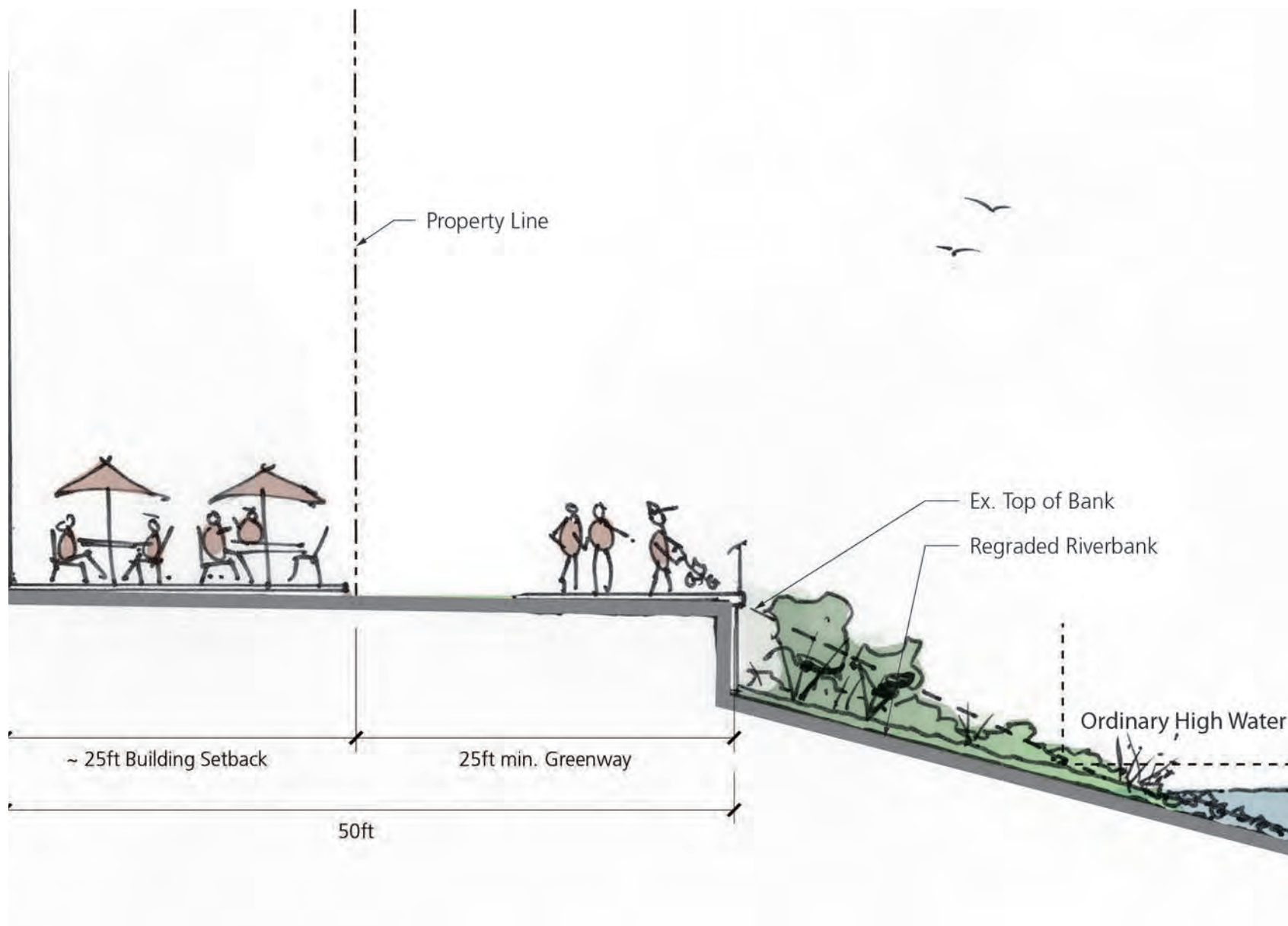


Preferred Concept  
Riverwalk at Potential Hotel

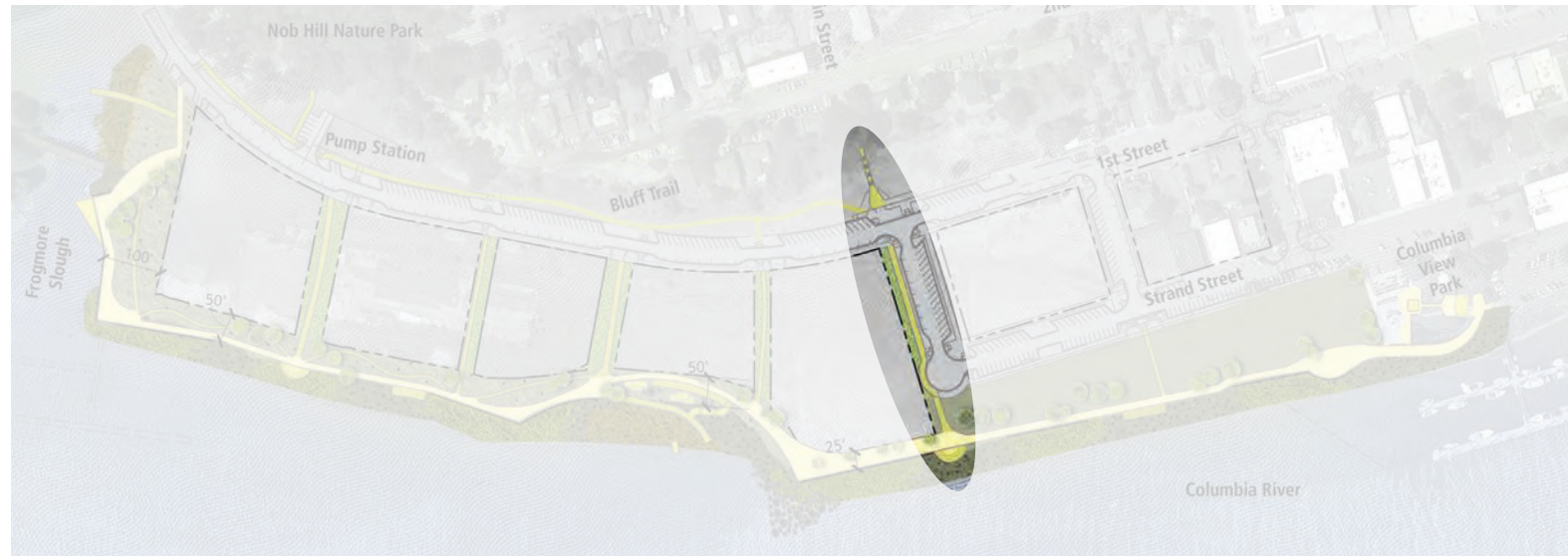
Item #1.



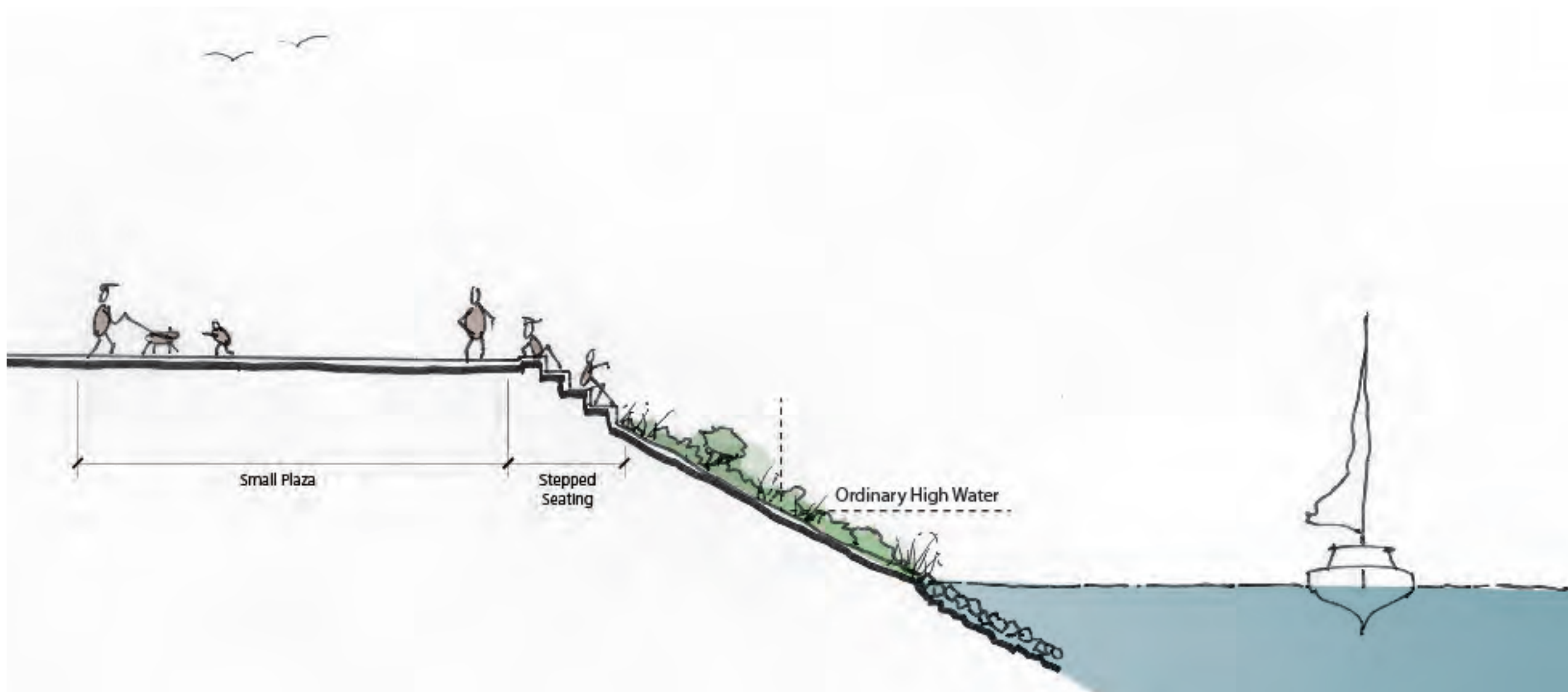
- Minimum 25ft setback for Riverwalk.
- Approx. 25ft building setback on private property.
- Existing riverbank remains.





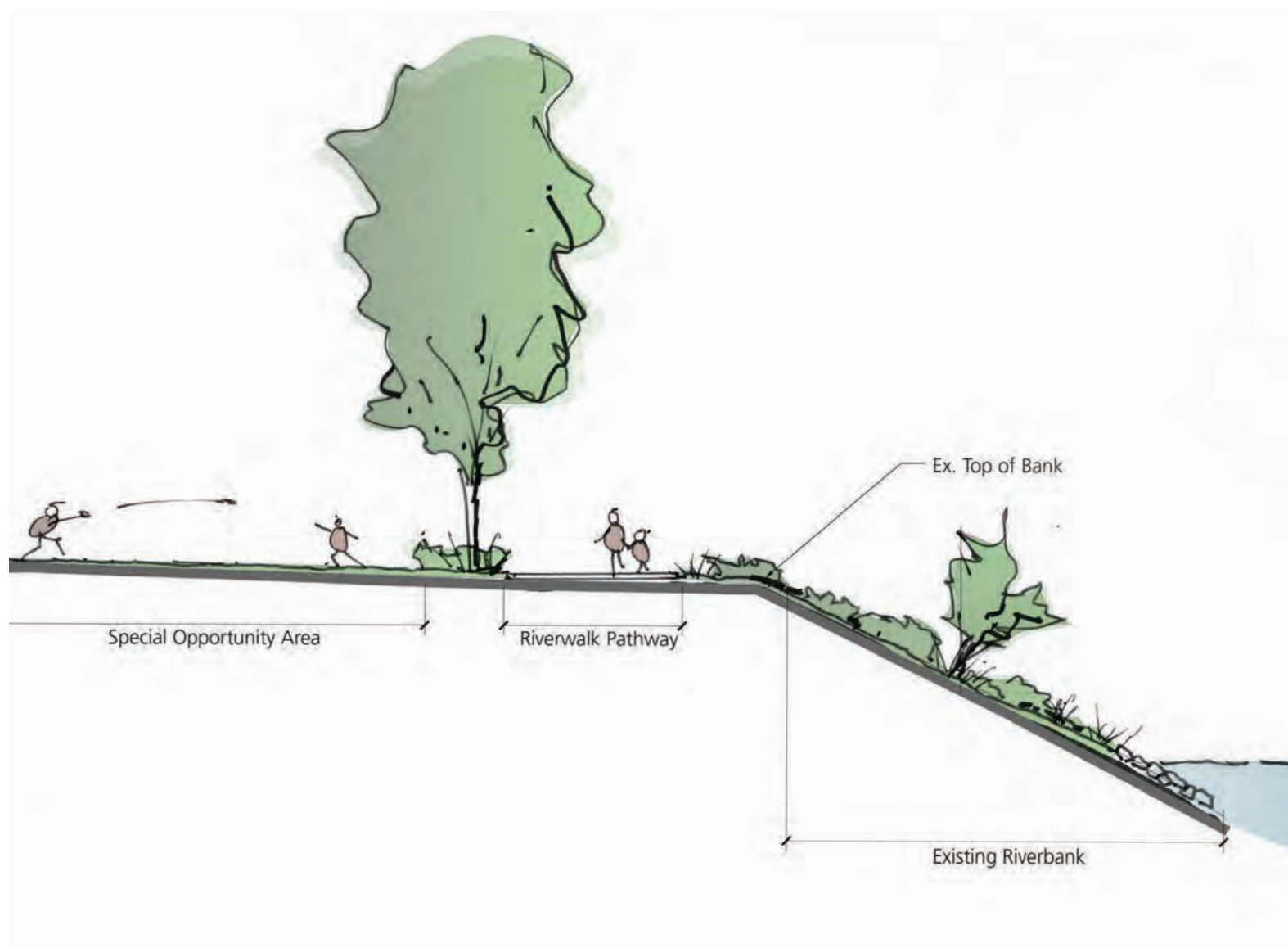


- Small plaza with stepped seating built into top of bank.
- Aligns with views from Tualatin stairway and Strand Street.

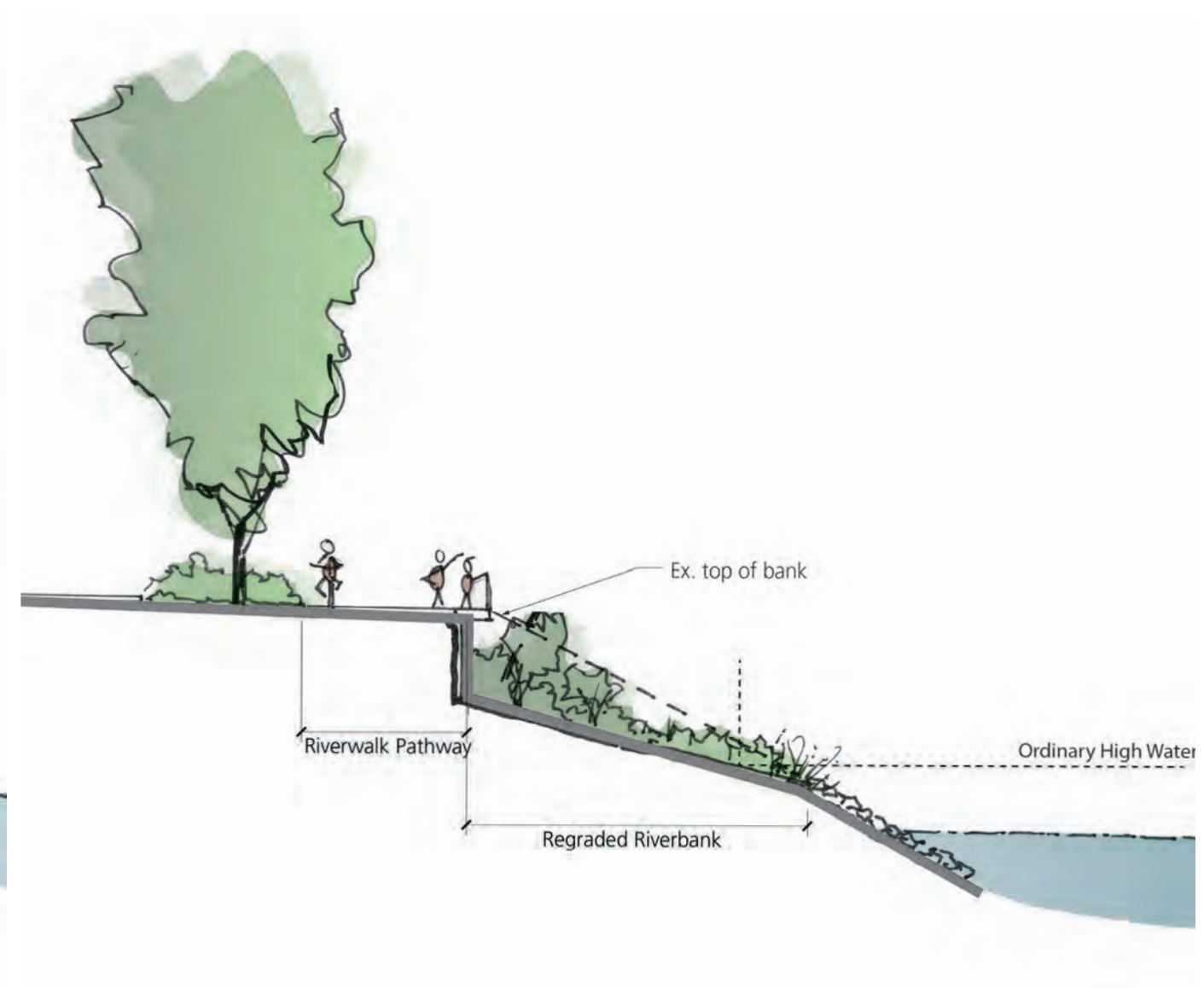




# Preferred Concept Riverwalk Typical Section - North



Riverwalk at Existing Riverbank



Riverwalk at Regraded Riverbank

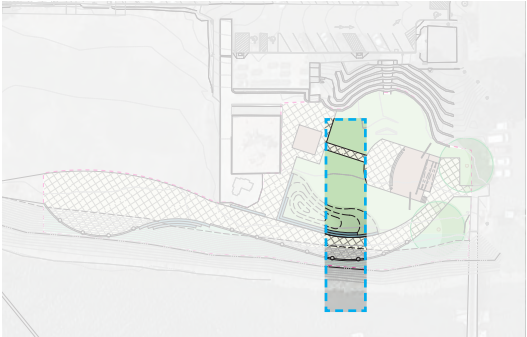




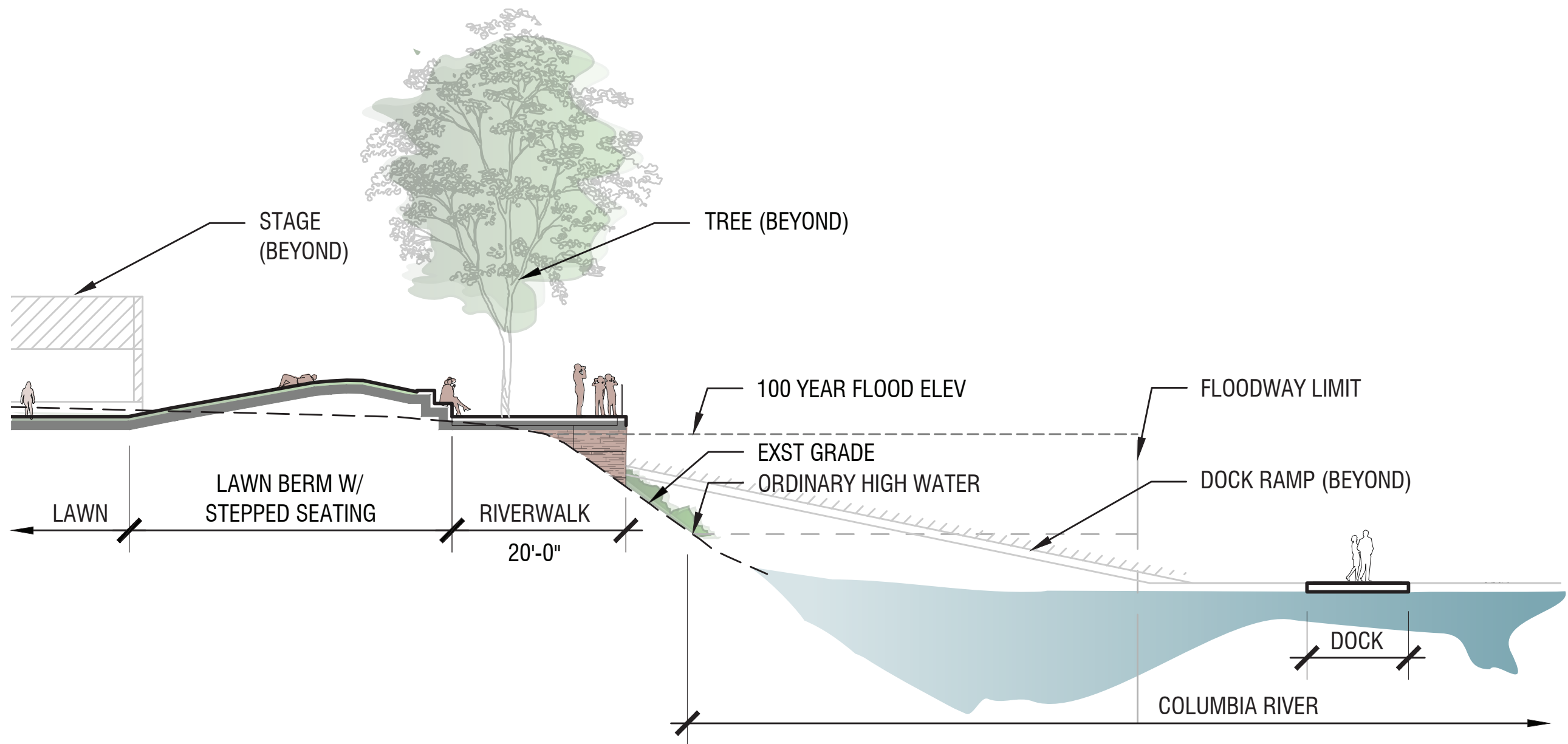








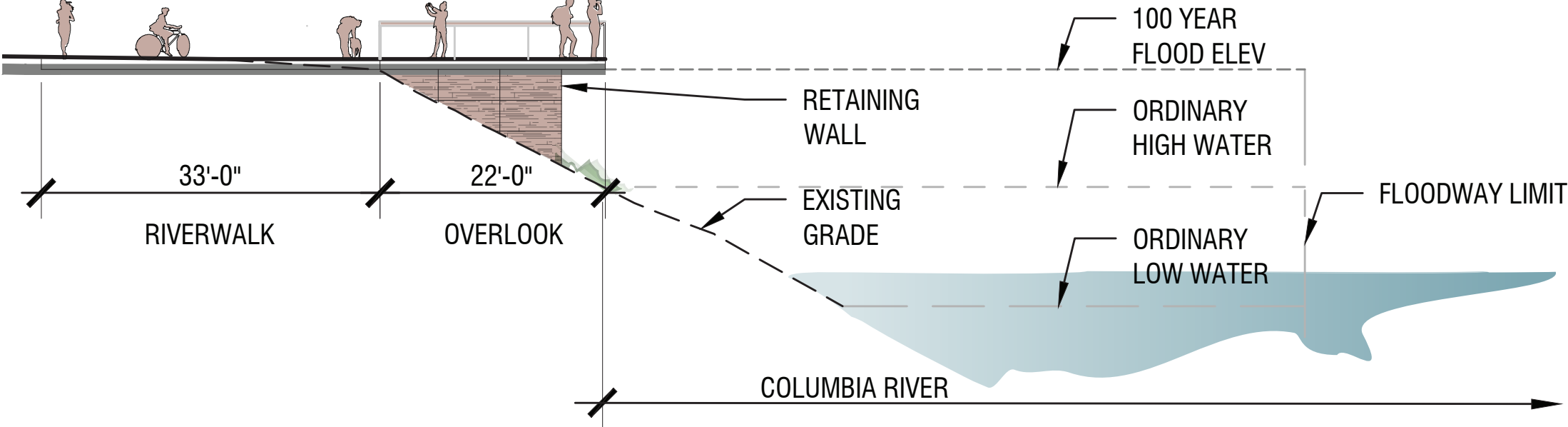
KEY PLAN







KEY PLAN





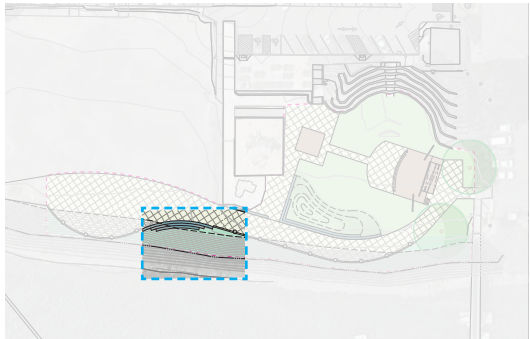


KEY PLAN



Overlook at Cowlitz





KEY PLAN



Stepped seating at Riverwalk



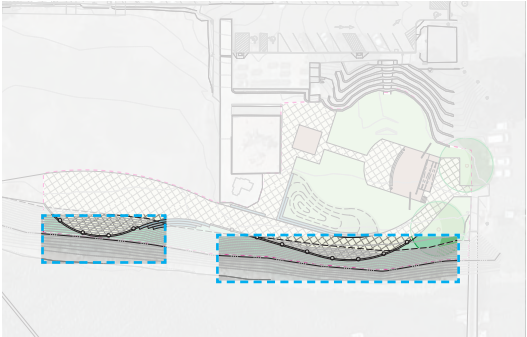


KEY PLAN



Lawn berm facing stage with stepped seating facing river





KEY PLAN



Retaining wall with railing





KEY PLAN

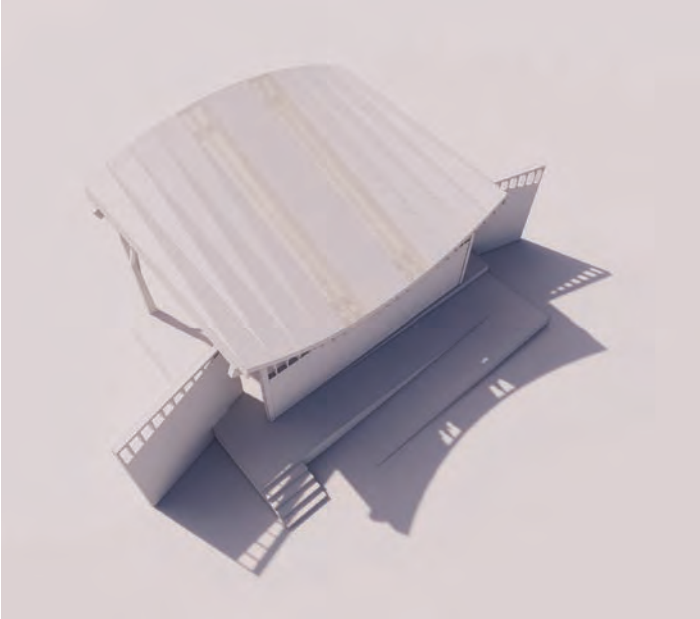
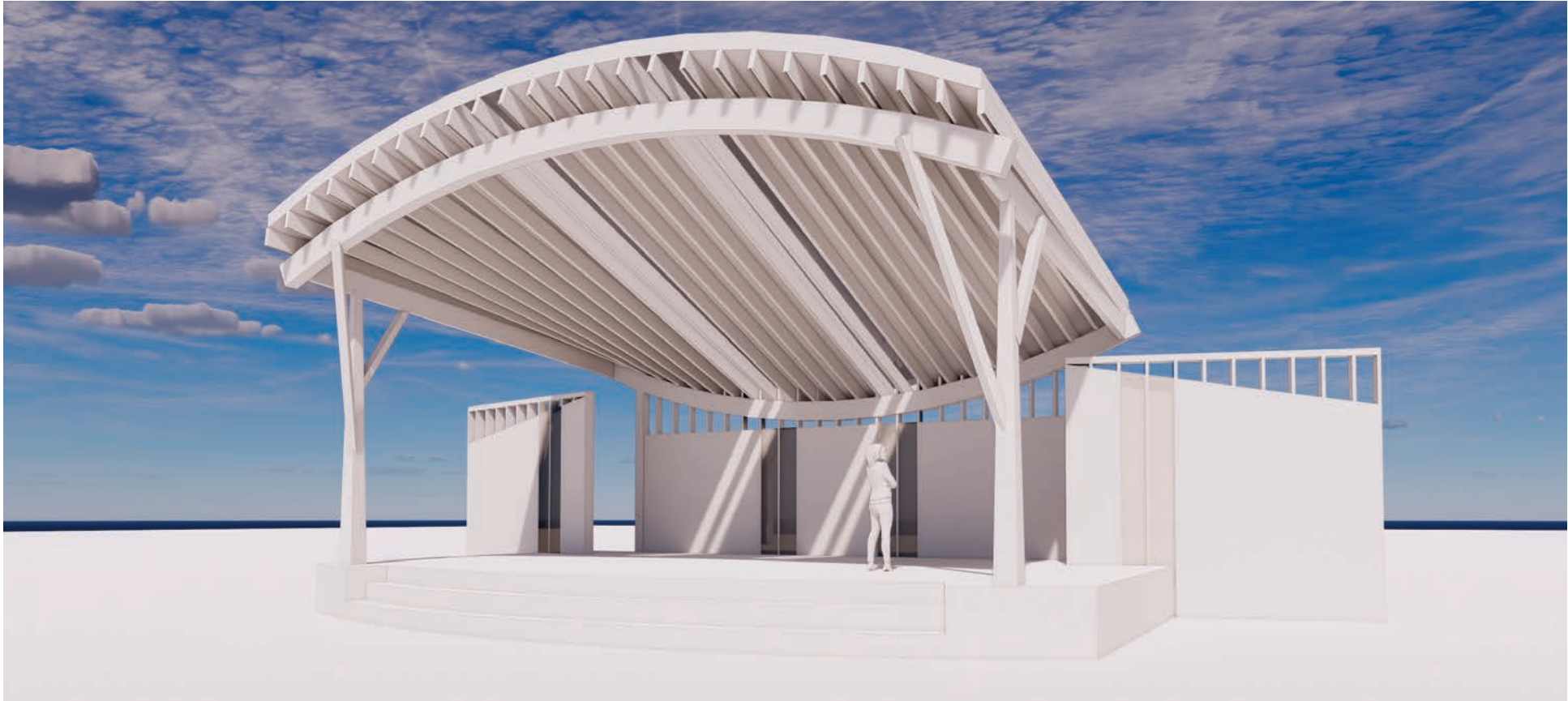


Unobstructed views past stage





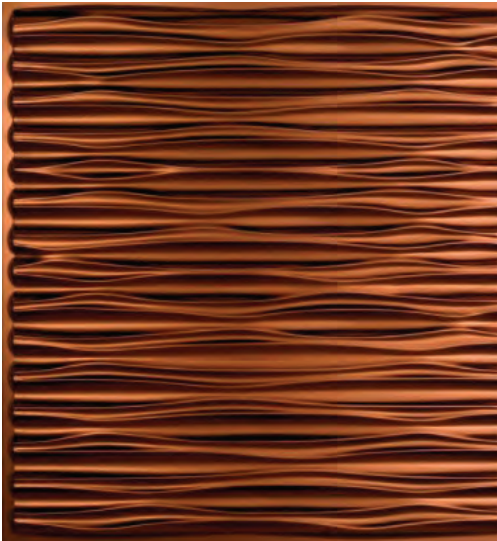
KEY PLAN







Organic imagery for structural support



Organic, soft textures, patterns



Simple, yet dynamic roof forms



Roof forms evoke wind, water, movement



Interactive light / shadow effects



Stage / Events sharing site with natural vistas



Basalt pattern relationship to Courthouse











