



CITY COUNCIL WORKSESSION AGENDA
MONDAY, MARCH 20, 2023
1301 81ST AVE NE at 5:30 PM

- 1. CALL TO ORDER**
- 2. DISCUSSION ITEMS**
 - A. No Mow May (*Councilmember Moran*)
 - B. OSA Performance Measurement Program Participation
 - C. City Hall Renovation/Expansion Project Update
- 3. REPORT**
 - A. City Council and Staff Reports
- 4. ADJOURN**



Memorandum

To: Mayor Nelson and Members of the City Council

From: Daniel R. Buchholtz, MMC, Administrator, Clerk/Treasurer

Date: March 13, 2023

Subject: No Mow May Initiative

Councilmember Moran asked that the City Council discuss the “No Mow May” initiative at a future work session.

No Mow May is a conservation initiative that encourages people to stop mowing or mow less often for the month of May to create habitat and provide resources for bees and other early-season pollinators. The City would refrain from enforcing the 9” long grass nuisance ordinance during the month of May.

Pros and Cons of Adopting “No Mow May”:

Pros

- Avoiding mowing protects overwinter habitat for native bees
- Provides a source of nutrients to pollinators at a time when they need it most
- A health and more biodiverse pollinator population helps Minnesota’s urban landscapes and statewide agriculture thrive
- Creates a reduction in small engine use (in May)

Cons

- Increased complaints about un-manicured lawns.
- Possible increased staff time (property registrations, backlog of inspections)
- Increased spread of dandelions, thistle, clover, violet and other “weed species”
- Rodent, tick population increase
- Justification for not mowing property
- Additional small engine use (in June)

Cities participating in No Mow May include: Edina, Crystal, Brooklyn Park, St. Louis Park, West St. Paul, Vadnais Heights, North Mankato, Mounds View, Monticello, Bemidji, Rochester, Savage, Roseville, Albertville, Columbia Heights, St. Peter, Redwing and South St Paul.

The City has incorporated pollinator friendly habitats into improvement projects. The City has planted pollinator friendly natural plantings around the Fillmore Street and Garfield Street storm water ponds after dredging projects. The City received a grant to plant natural plantings around the Triangle Park storm water pond, which will be planted this spring. Another consideration is

that a yard without flowering plants will not benefit bees while one rich in a diversity of native species will attract many bees.

Other cities have implemented “No Mow May” by:

- Starting with a one-year trial period.
- Requiring residents to register with the city prior to a date specific (e.g. May 15) to be a participant in the “No Mow May” program. Only registered properties would be exempt from weed ordinance enforcement during the month of May.
- Handing out signs to residents for placement in their yards advertising participation in the program.
- Once “No Mow May” is complete, identifying a date specific for properties to be brought back into compliance.

If the City Council wishes to implement the program, the Council will need to identify the parameters of the program. If the Council does not wish to implement the program, the City should make a statement to that effect on the City’s website.

Staff has included information from the City of Edina on their “No Mow May” initiative.

If you have any questions, please do not hesitate to contact me at 763-784-6491.

No Mow May

Registration is now open for No Mow May 2023. Sign up by May 1st to reserve your yard sign. Registration closes May 15th, 2023.

Participate in Edina's 2nd annual No Mow May program! No Mow May encourages residents who live in owner-occupied or rented properties to allow flowering plants to bloom that provide habitat and nutrition for early-season pollinators by pausing mowing their lawn during the month of May. Following the success of Edina's inaugural event in 2022, City Council passed a Resolution of Support for No Mow May in 2023, temporarily suspending its turf and weed ordinances related to lawn height for participating properties. Properties must come back into compliance by June 15, 2023.

Registration closes May 15th for the 2023 No Mow May program! Sign up by May 15th to ensure your yard is included in No Mow May this year.

Yard signs will be available to those who register by May 1st, 2023. In order to register, participants must be logged in to a BetterTogether account—those interested in participating who do not have an account can create one for free [here](#). Participants who register by May 1st can pick up their yard sign on the following Wednesdays (April 5th, April 12th, April 19th, April 26th, and May 3rd) from 8:00am-12:00pm at Edina City Hall in the main foyer (*limit one per household). Signs will be available to registrants after May 1st on a first-come first-serve basis, as quantity is limited. Have a sign from last year? **Reuse it!**

Pollinator Workshops: Interested in learning more ways you can help? Learn the [basics of planting and maintaining a bee lawn\(External link\)](#), or register for any of the following workshops as part of Edina's No Mow May Webinar Series - registration required:

- **Resilient Yards:** [Thursday, May 11th at 6:00 pm](#)
- **Pollinator Plantings:** [Thursday, May 18th at 6:00 pm](#)
- **Turf Alternatives:** [Tuesday, May 23rd at 6:00pm](#)

** Residents: After entering your information and Edina address, a coupon code will be automatically applied and mandatory payment will be dismissed. * Non-residents: cost is \$15 per workshop.*

Missed out on Edina No Mow May signs? Participants can print a free sign from [Bee City USA's No Mow May website](#)([External link](#)) to display.

Want to know what to do with your sign after May? **Save it!** The sign is meant to be used for multiple years, so consider stowing it in a closet, garage or basement after May, for future use in the years to come. If you don't expect to participate in No Mow May again, consider dropping off your sign at the Edina Public Works' front desk (7450 Metro Blvd), so that it can be reused.

Benefits of No Mow May: Participating in No Mow May supports all of Minnesota's pollinators - Minnesota pollinators include native bees, butterflies, ants, flies, beetles, birds and more! Avoid mowing in early spring and during the month of May to protect overwinter habitat for threatened bee populations and other pollinators, while allowing flowering plants to grow rich in nectar and other key nutrients that serve as food for our pollinator friends during a time when needed most. In urban areas, like Edina, pollinator habitat and food sources are relatively sparse this time of year—by joining No Mow May, you can help support the health and diversity of native pollinator populations by providing the resources needed for pollinators to thrive.

June - Return to Mow Tips: When you start mowing again in June, learn from the UMN about [mowing best practices for a healthy lawn](#)([External link](#)). Best practices for bringing your grass back down to a reasonable height while keeping it healthy include:

- Mow late in the day or when grass is dry
- Mow down in small increments (never more than 1/3 of grass blade's height at one time)
- Rake up excessive clippings to prevent them from going into streets. This protects your local water quality and keeps storm drains clear.

To Help Pollinators Year-round:

- Mow less – instead of mowing your lawn every single week, or even multiple times a week, mow every 2 to 3 weeks. Mowing stresses your grass and creates unhealthy lawns if mowed too frequently. Lawns mowed every 3 weeks can have as much as 2.5x more lawn flowers, and support a greater number of pollinators ([UMass-Amherst, 2018](#)).
- Mow higher – consider keeping your lawn 3.5-4.5” inches in height. Taller grass holds more moisture, is less prone to stress, and better hides plants like clover and dandelion that pollinators need.
- Water your lawn about 1” (in volume) per week in the early morning or late evening, and avoid watering during rain events.
- Water your lawn all at once rather than in smaller quantities more frequently. This can disrupt pollinators and other insects, and stress your lawn during periods of drought.
- Allow some flowering plants to persist in your lawn; tolerate clover and dandelions. To provide plenty of food sources from spring and throughout fall, avoid de-weeding your entire yard – no need to pull up all those 'evil' patches of clover or rid your lawn of all those 'pesky' dandelions. These are a favorite food source for many of MN's threatened pollinators, including several bee species.
- Limit or cease use of synthetic pesticides and fertilizers. Use organic sources sparingly instead.
- Ready to re-seed your grass lawn? Consider prioritizing fine fescue over Kentucky bluegrass. Fine fescue is slow growing, while KY bluegrass requires more frequent mowing.
- Consider applying for Minnesota's [Lawns to Legumes](#) program.

Program Registration

Register for No Mow May - 2023

189 responses

Register Today to participate in Edina's 2023 No Mow May program!

Residential properties that are owner-occupied or occupied by renters who receive landlord consent can participate. All other properties must comply with Edina's City Code related to turf and weed management. The program allows residents of owner-occupied or rented homes to avoid mowing their lawns for the month of May, to support pollinators in the community. Once registered, participants can pick up a yard sign from Edina City Hall to show their support for No Mow May (*signs are subject to availability after May 1st, 2023).

Missed out on a No Mow May sign this year? Participants can print a free sign from [Bee City USA's No Mow May website](#) to display.

COMPLETE REGISTRATION

CLOSED: Registration for 2022 No Mow May has concluded.

2022 Registration [CLOSED]

1182 responses

As of May 15th, 2022 Registration for this year's No Mow May program has **CLOSED.**

Thanks to all for participating in the program's inaugural year!

Register to participate in Edina's 2022 No Mow May program. Residential properties that are owner-occupied or occupied by renters who receive landlord consent can participate. All other properties must comply with Edina's City Code related to turf and weed management. The program allows residents of owner-occupied or rented homes to avoid mowing their lawns for the month of May, to support pollinators in the community. Once registered, participants can pick up a yard sign from Edina City Hall to show their support for No Mow May (*signs are subject to availability after May 1st, 2022).

Missed out on Edina's No Mow May yard signs this year? Participants can print a free sign from [Bee City USA's No Mow May website](#) to display.

COMPLETE REGISTRATION

Who's Listening

Grace Hancock

Sustainability Manager
City of Edina

Phone 952-826-1621

Email ghancock@EdinaMN.gov



Janet Canton

Parks & Recreation Administration
City of Edina

Phone 952-826-0367

Email jcanton@edinamn.gov



Helpful Documents

[Pollinator-Friendly Plants \(2.12 MB\) \(pdf\)](#)

[Noxious Weeds to Avoid \(1.02 MB\) \(pdf\)](#)

[Benefits of No Mow May \(1.57 MB\) \(pdf\)](#)

[City Council Resolution 2023-12 No Mow May \(776 KB\) \(pdf\)](#)

[City Council Resolution 2020-42 Supporting Pollinators \(262 KB\) \(pdf\)](#)

[2022 Inaugural Year](#)

[City Council Resolution 2022-34 No Mow May \(775 KB\) \(pdf\)](#)

[No Mow May 2022 \(15.6 KB\) \(docx\)](#)

[Terms and Conditions](#)

[Privacy Policy](#)

[Moderation Policy](#)

[Accessibility](#)

[Technical Support](#)

[City of Edina Website](#)

[Development and Construction Tracker](#)

[Cookie Policy](#)



BENEFITS OF A POLLINATOR-FRIENDLY YARD!



1. Can be a rest stop for pollinators as they migrate and search for food.



2. Provides a healthy habitat for pollinators & songbirds, helping increase biodiversity.



3. Native plants help sequester carbon and have long roots that help retain & filter water.



Learn more from the DNR about the benefits of growing native plants by scanning this QR code!



POLLINATOR FAVORITES: NATIVE PLANTS



Wild Bergamot

Easy to grow, fragrant foliage is mint-scented, bearing large, lilac-colored blooms



Butterfly Weed

Attract a handful of butterfly species with this long-lasting, vibrant bloomer



Common Yarrow

A must-have in any pollinator garden, hardy and drought-tolerant



Black-eyed Susan

Classic and eye-catching, these bright yellow flowers will keep blooming midsummer through the first frost.



Columbine

Early bloomer attracts hummingbirds, well suited for a variety of growing conditions



Showy Goldenrod

The bees will flock to your yard for these tall, late-season bloomers



What are the benefits of using native plants?

- Found to support greater abundance & diversity of bees, butterflies, and other kinds of wildlife.
- Studies have shown they support up to 15 times as many caterpillars compared to non-native plants.
- They are better adapted to local conditions, meaning they are often easier to grow & more likely to survive.

Leave the Weeds, Help Feed the Bees!



Common Milkweed

Monarch butterflies depend on milkweed - it is the sole food source for their larvae & is only plant they lay their eggs on.

Dandelion

Have one of the longest flowering seasons of any plant!

Clover

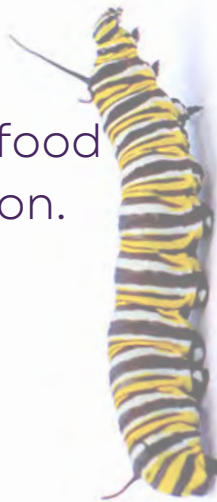
This low growing plant often grows in patches and among grass.

Yellow Wood Sorrel

Often considered a weed, but not in the eyes of pollinators.

Chickweed

Nutrient rich plant with small, white, star-shaped flowers.



AVOID THESE PLANTS & WEEDS!



Crabgrass

Spreads quickly and can easily overtake lawns.



European Buckthorn

Outcompetes native species, fast growing and difficult to manage.



Garlic Mustard

Can impede natural forest regeneration.



Bull Thistle

Spikey and painful to touch, grows quickly and is hard to control.



Common Tansy

Degrades pastures and impedes reforestation efforts, can be toxic if ingested.



Creeping Charlie

Its dense matting form can displace other ground plant cover.



Amur Silver Grass

Its horizontal root systems crowd out other plants.



**Learn more about invasive plants
from the Minnesota Department of
Natural Resources!**



Memorandum

To: Mayor Nelson and Members of the City Council

From: Daniel R. Buchholtz, MMC, Administrator, Clerk/Treasurer

Date: March 13, 2023

Subject: Office of the State Auditor Performance Measurement Program

In 2010, the State Legislature created the Council on Local Results and Innovation, which released a standard set of ten performance measures for cities that will aid residents, taxpayers and local officials in determining the efficiency in which cities provide services and measure residents' opinions of those services.

Participation in the program is voluntary. Participants receive a reimbursement of \$0.14 per capital (up to a maximum of \$25,000) and is exempt from levy limits under M.S. §§ 275.70 to 275.74, if levy limits are in effect.

Even though the reimbursement is less than \$1,000 for the City of Spring Lake Park, staff believes the effort will provide a snapshot into the opinions of residents into the quality of our city services and will help us improve as an organization.

I have drafted a sample survey for use. It is important to identify questions we can use year after year for comparison purposes.

Information regarding the ten performance measures is also attached.

Staff would utilize Google Forms for the survey tool, which is available at no cost to the City.

If you have any questions, please don't hesitate to contact me at 763-784-6491.

Sample resolution for cities/counties participating for the first time in the program

COUNTY BOARD OF COMMISSIONERS/CITY COUNCIL

, Minnesota

Date _____	Resolution No. _____
Motion by _____	Second by _____
Commissioner/Council _____	Commissioner/Council _____
Member _____	Member _____

WHEREAS, In 2010, the Minnesota Legislature created the Council on Local Results and Innovation; and

WHEREAS, The Council on Local Results and Innovation developed a standard set of performance measures that will aid residents, taxpayers, and state and local elected officials in determining the efficacy of counties in providing services and measure residents' opinion of those services; and

WHEREAS, Benefits to the City of _____ /County are outlined in MS 6.91 and include eligibility for a reimbursement as set by State statute; and

WHEREAS, Any city/county participating in the comprehensive performance measurement program is also exempt from levy limits for taxes, if levy limits are in effect; and

WHEREAS, The City Council of _____ /County Board has adopted and implemented at least 10 of the performance measures, as developed by the Council on Local Results and Innovation, and a system to use this information to help plan, budget, manage and evaluate programs and processes for optimal future outcomes; and

NOW THEREFORE LET IT BE RESOLVED THAT, The City Council of _____ /County will report the results of the performance measures to its citizenry by the end of the year through publication, direct mailing, posting on the city's/county's website, or through a public hearing at which the budget and levy will be discussed and public input allowed.

BE IT FURTHER RESOLVED, The City Council of _____ /County will submit to the Office of the State Auditor the actual results of the performance measures adopted by the county/city.

Detail of Voting: **Ayes** **Nays**

Standard Measures for Cities

Category	#	Measure	Notes:
General	1.	Rating of the overall quality of services provided by your city (survey data, provide year completed and total responses)	Example of responses: excellent, good, fair, poor
	2.	Percent change in the taxable property market value	County assessor's office data
	3.	Citizens' rating of the overall appearance of the city (survey data, provide year completed and total responses)	Example of responses: excellent, good, fair, poor
	4.*	Nuisance code enforcement cases per 1,000 population	$(\text{Number of cases} / \text{Population}) \times 1,000 = \text{cases per 1,000 population}$
	5.*	Number of library visits per 1,000 population	$(\text{Number of visits} / \text{Population}) \times 1,000 = \text{visits per 1,000 population}$
	6.*	Bond rating	Standard & Poor's Ratings Services or Moody's Investor Services
	7.	Citizens' rating of the quality of city recreational programs and facilities (survey data, provide year completed and total responses)	Example of responses: excellent, good, fair, poor
	8.*	Accuracy of post election audit (% of ballots counted accurately)	
Police Services	9.	Part I and II Crime Rates	Submit data as reported by the Minnesota Bureau of Criminal Apprehension
	10.*	Part I and II Crime Clearance Rates	Submit data as reported by the Minnesota Bureau of Criminal Apprehension
	11.	Citizens' rating of safety in their community (survey data, provide year completed and total responses)	Example of responses: very safe, somewhat safe, neither safe nor unsafe, somewhat unsafe, very unsafe
	12.	Average police response time	Average time it takes to respond to top priority calls from dispatch to officer on scene.
Fire & EMS Services	13.	Insurance industry rating of fire services	Insurance Service Office (ISO) Rating. The ISO issues ratings to fire departments throughout the country for the effectiveness of their fire protection services and equipment. ISO analyzes data and then assigns a classification from 1 to 10. Class 1 represents superior property fire protection and Class 10 indicates that the area's fire suppression program does not meet ISO's minimum criteria.
	14.	Citizens' rating of the quality of fire protection services (survey data, provide year completed and total responses)	Example of responses: excellent, good, fair, poor
	15.	Average fire response time	Average time it takes from dispatch to apparatus on scene for calls that are dispatched as a possible fire
	16.*	Fire calls per 1,000 population	$(\text{Number of calls} / \text{population}) \times 1,000 = \text{calls per 1,000 population}$
	17.*	Number of fires with loss resulting in investigation	
	18.*	EMS calls per 1,000 population	$(\text{Number of calls} / \text{population}) \times 1,000 = \text{calls per 1,000 population}$
	19.	Emergency Medical Services average response time	Average time it takes from dispatch to arrival of EMS
Streets	20.	Average city street pavement condition rating	Provide average rating and the rating system program/type. Example, 70 rating on the Pavement Condition Index (PCI).
	21.	Citizens' rating of the road conditions in their city (survey data, provide year completed and total responses)	Example of responses: excellent, good, fair, poor. Alternatively: good condition, mostly good condition, many bad spots
	22.*	Expenditures for road rehabilitation per paved lane mile rehabilitated (jurisdiction only roads)	Total cost for rehabilitations / lane miles rehabilitated
	23.*	Percentage of all jurisdiction lane miles rehabilitated in the year	Lane miles rehabilitated in year / total number of lane miles
	24.*	Average hours to complete road system during snow event	
	25.	Citizens' rating of the quality of snowplowing on city streets (survey data, provide year completed and total responses)	Example of responses: excellent, good, fair, poor
Water	26.	Citizens' rating of the dependability and quality of the city water supply (survey data, provide year completed and total responses)	Example of responses: excellent, good, fair, poor
	27.	Operating cost per 1,000,000 gallons of water pumped/produced	Centrally provided system: $(\text{actual operating expense for water utility} / (\text{total gallons pumped} / 1,000,000)) = \text{cost per million}$
Sanitary Sewer	28.	Citizens' rating of the dependability and quality of city sanitary sewer service (Provide year completed and total responses)	Example of responses: excellent, good, fair, poor
	29.	Number of sewer blockages on city system per 100 connections	Centrally provided system: $(\text{Number of blockages} / \text{number of connections}) \times 100 = \text{blockages per 100 connections}$

*New or amended measure

City of Spring Lake Park Citizen Survey

The City is conducting a city services survey as part of its participation in the voluntary Performance Measurement Program through the Minnesota Office of the State Auditor. The purpose of the program is to help residents and local officials determine how effective the city has been in providing core city services and to measure residents' opinions of those services.

The City's performance measures include both objective and subjective indicators of the quality of police services, fire, city streets, water system, sanitary sewer system, overall appearance, and changes in taxable market value and bond rating. The results of the survey will be posted on the City's website in June.

1. How would you rate the overall appearance of the city?

Mark only one oval.

- Excellent
 Good
 Fair
 Poor
 Don't know

2. How would you describe your overall feeling of safety in the city?

Mark only one oval.

- Very safe
 Somewhat safe
 Somewhat unsafe
 Very unsafe
 Don't know

3. How would you rate police services in the city?

Mark only one oval.

- Excellent
 Good
 Fair
 Poor
 Don't know

4. What is the biggest public safety concern in Spring Lake Park?

Mark only one oval.

- Violent Crime
- Traffic/Speeding
- Drugs
- Youth Crime and Vandalism
- Business Crimes (shoplifting, check fraud, etc)
- Residential Crimes (burglary, theft, etc)
- Identity Theft
- Lack of Police Capacity
- Thefts from Vehicles
- Other: _____

5. How would you rate the overall quality of fire protection services in the city?

Mark only one oval.

- Excellent
- Good
- Fair
- Poor
- Don't know

6. How would you rate the condition of the city streets?

Mark only one oval.

- Excellent
- Good
- Fair
- Poor
- Don't know

7. How would you rate the overall quality of snowplowing on city streets?

Mark only one oval.

- Excellent
- Good
- Fair
- Poor
- Don't know

8. How would you rate the dependability and overall quality of the city's water system?

Mark only one oval.

- Excellent
- Good
- Fair
- Poor
- Don't know

9. How would you rate the dependability and overall quality of the city's waste water system?

Mark only one oval.

- Excellent
- Good
- Fair
- Poor
- Don't know

10. How would you rate the overall quality of storm water management in the city?

Mark only one oval.

- Excellent
- Good
- Fair
- Poor
- Don't know

11. How would you rate the overall quality of city parks and trails?

Mark only one oval.

- Excellent
- Good
- Fair
- Poor
- Don't know

12. How would you rate the quality of the recreation programs offered by the city?

Mark only one oval.

- Excellent
- Good
- Fair
- Poor
- I've never participated in a recreation program offered by the city
- Other: _____

13. How would you describe the City's stance on enforcing the city code on such nuisance issues as exterior storage, inoperable vehicles and long grass/weeds?

Mark only one oval.

- Too tough
- About right
- Not tough enough
- Don't know

14. How would you rate the quality of communication/distribution of city information?

Mark only one oval.

- Excellent
- Good
- Fair
- Poor

15. Of these sources, how do you obtain the majority of your city information?

Mark only one oval.

- City publications
- City website
- City social media
- City emails
- Blaine/Spring Lake Park Life Newspaper
- North Metro Television
- Community billboard
- Other: _____

16. How would you rate the overall quality of services provided by the city?

Mark only one oval.

- Excellent
- Good
- Fair
- Poor

17. How would you rate the value of services you receive from the City for the taxes you pay?

Mark only one oval.

- Excellent
- Good
- Fair
- Poor

Demographic Information

18. What is your age?

Mark only one oval.

18-24

25-34

35-44

45-54

55-64

65 and over

19. How long have you lived in Spring Lake Park?

Mark only one oval.

0-1 year

2-5 years

6-10 years

11-20 years

More than 20 years

20. Which of the following categories represents your race/ethnicity?

Mark only one oval.

White

African American or African-born

Hispanic-Latino

Asian-Pacific Islander

Native American

Something Else

Mixed/Bi-Racial

Don't know

Other: _____

21. Thinking about your household finances, how would you describe your financial situation? Would you say that:

Mark only one oval.

- Your monthly expenses are exceeding your income
- You are meeting your monthly expenses but are putting aside little or no savings
- You are managing comfortably while putting some money aside
- You are managing very well

22. Gender

Mark only one oval.

- Female
- Male
- Prefer not to say
- Other: _____

This content is neither created nor endorsed by Google.

Google Forms



Memorandum

To: Mayor Nelson and Members of the City Council

From: Daniel R. Buchholtz, MMC, Administrator, Clerk/Treasurer

Date: March 13, 2023

Subject: City Hall Renovation/Expansion Project

Included with this memorandum is the latest design plan for the City Hall renovation project. The biggest change is to add square footage to the multi-purpose room by eliminating the Council Library and video room and shifting the City Council Chambers to the west. The conference room in the rear of the building (where Chief Antoine's office is currently) will be used as the Council Library.

This change will allow for less set-up/tear-down as the front portion of the multi-purpose room will serve as the senior center. The remainder of the multi-purpose room is of adequate size for a wide variety of recreation program and community events. Both rooms can be combined for larger events as well.

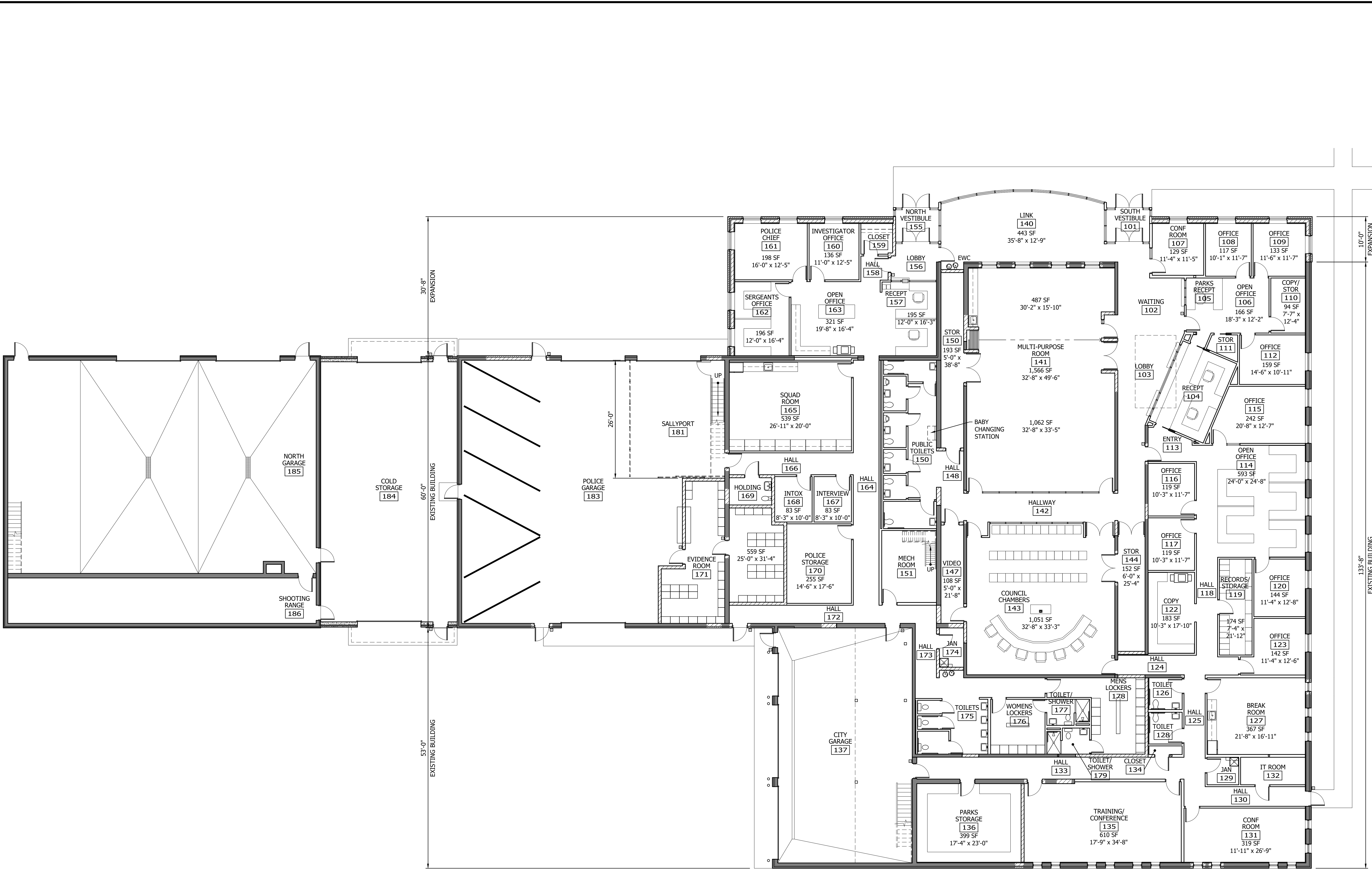
The City Council Chambers is the same size as in previous editions of the plan.

With these changes, staff is seeking City Council comment and acceptance of the plan. Once given, Stantec will begin the process of finishing the design (mechanical, electrical, structural, etc) and draft the construction documents needed to prepare for bidding out the project. As design moves forward, the City will receive a firm cost estimate to use for the Capital Improvement Plan public hearing.

The project is at a point that we can host an open house for the public to learn more about the project. The open house has been tentatively scheduled for Monday, May 8 from 5:30pm to 7:30pm. North Metro TV will be here at 5:00pm to work with staff and the architect to produce a video of the content shared at the open house for streaming. Information on the open house will be included in the next edition of the newsletter going out the beginning of April.

If you have any questions, please do not hesitate to contact me at 763-784-6491.

THE CONTRACTOR SHALL VERIFY AND BE RESPONSIBLE FOR ALL DIMENSIONS. DO NOT SCALE THE DRAWING. VERIFY ALL DIMENSIONS AND DRAWINGS ARE THE PROPERTY OF STANTEC. REPRODUCTION OR DISTRIBUTION OF THIS DRAWING WITHOUT THE WRITTEN PERMISSION OF STANTEC IS STRICTLY FORBIDDEN.

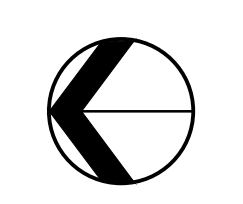
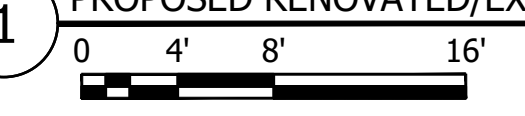


DATE: 08/26/2025
PROJECT: CITY HALL RENOVATION/EXPANSION
DRAWN BY: BPP
DESIGNED BY: BPP
CHECKED BY:
APPROVED BY:
PROJ. NO.: 19386049

CITY OF SPRING LAKE PARK, MINNESOTA
CITY HALL RENOVATION/EXPANSION
PROPOSED RENOVATED/EXPANDED FLOOR PLAN

NO.	REVISION	DATE

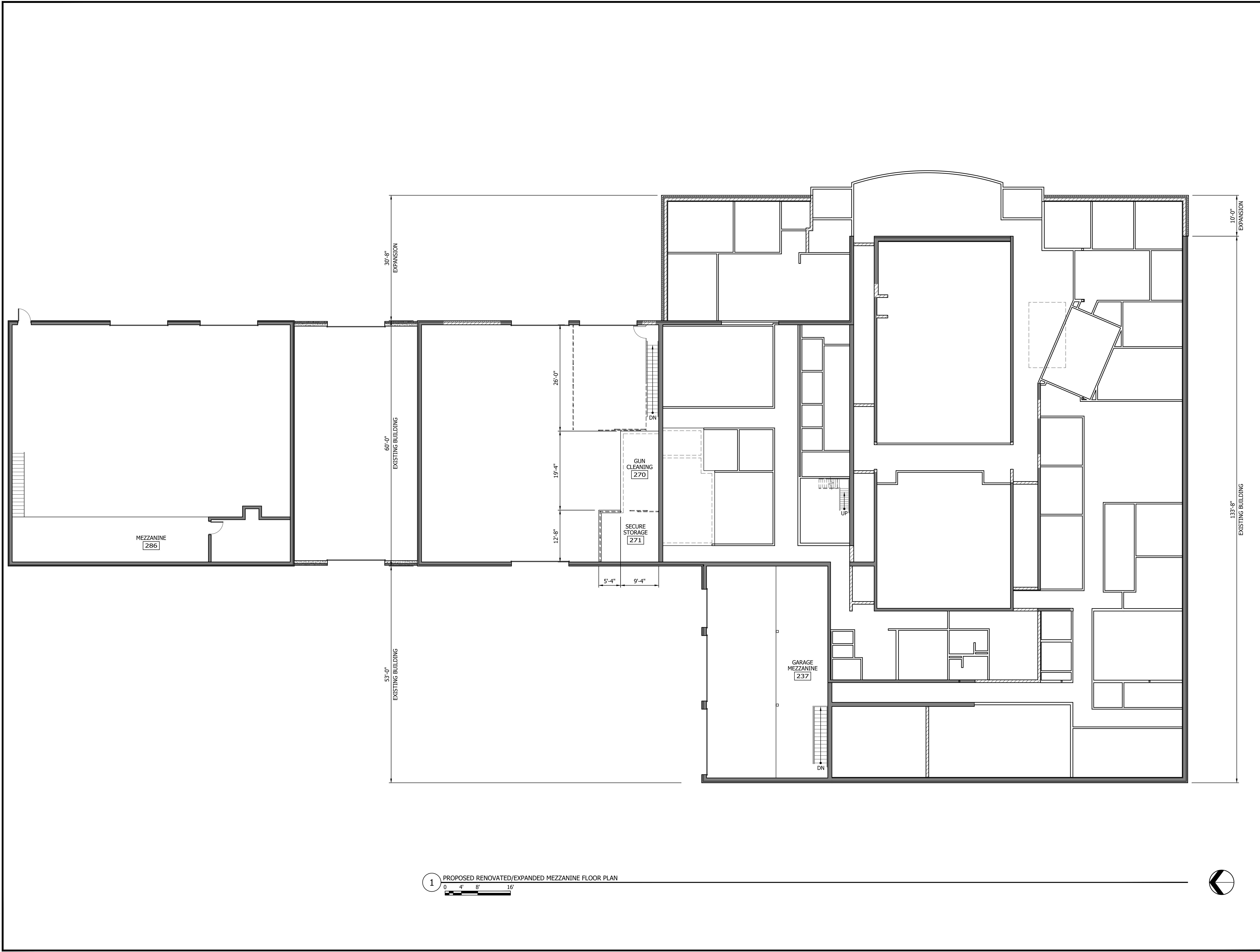
1 PROPOSED RENOVATED/EXPANDED FLOOR PLAN



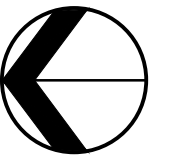
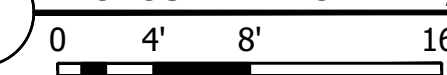
Plot Date: 08/26/2025 4:43pm
XREF: 19386049-A.101.dwg
PROJECT: 19386049
CADD: 19386049-A.101.dwg

THE CONTRACTOR SHALL VERIFY AND BE RESPONSIBLE FOR ALL DIMENSIONS. DO NOT SCALE THE DRAWING. THIS DRAWING IS THE PROPERTY OF STANTEC INC. ANY REPRODUCTION OR FOR ANY PURPOSES OTHER THAN THAT AUTHORIZED BY STANTEC IS FORBIDDEN.

Plot Date: 01/10/2025 3:35PM
 XREF: 193806049-002
 PROJECT: 193806049-002
 USER: JTB



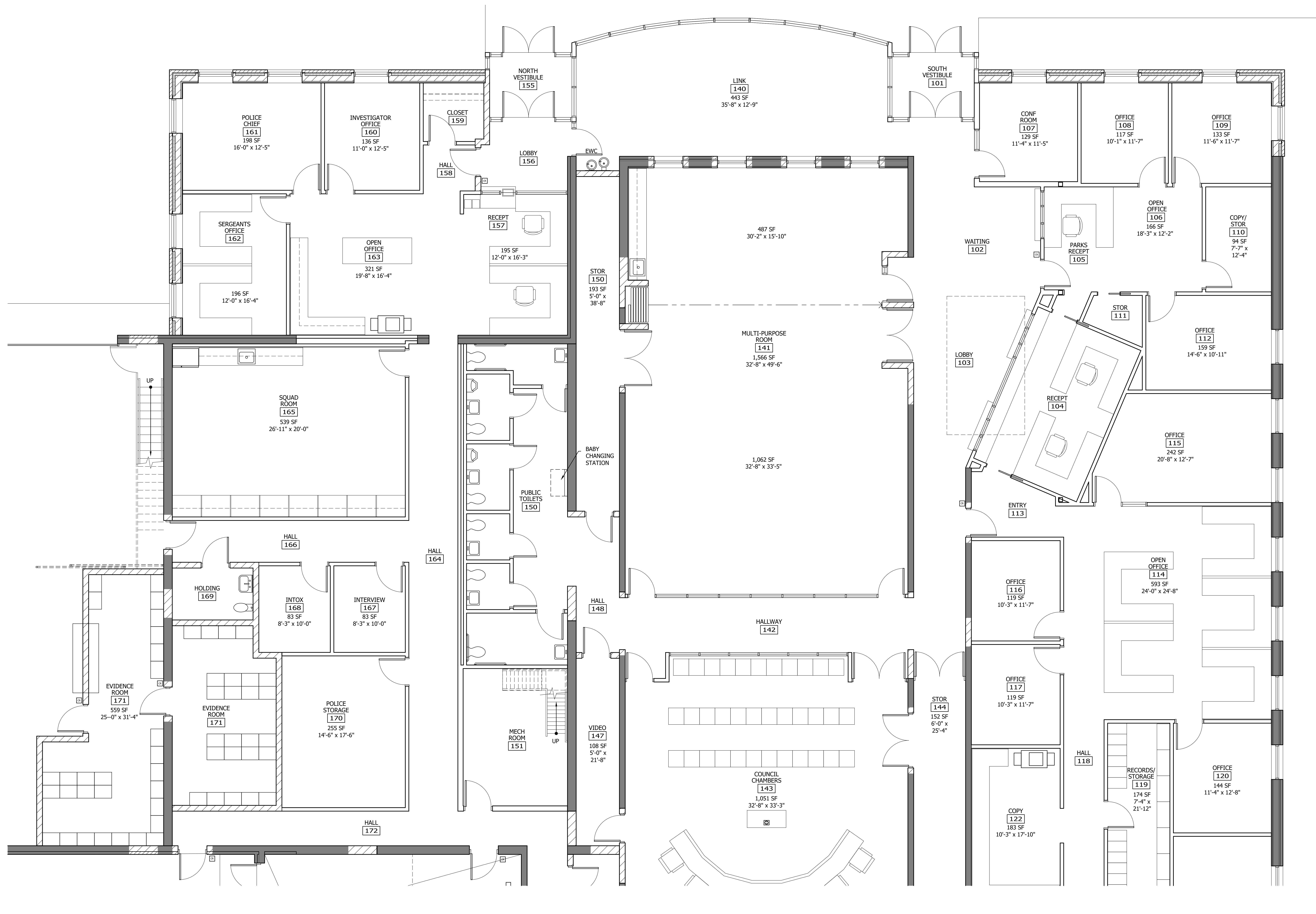
1 PROPOSED RENOVATED/EXPANDED MEZZANINE FLOOR PLAN



NO	REVISION	DATE

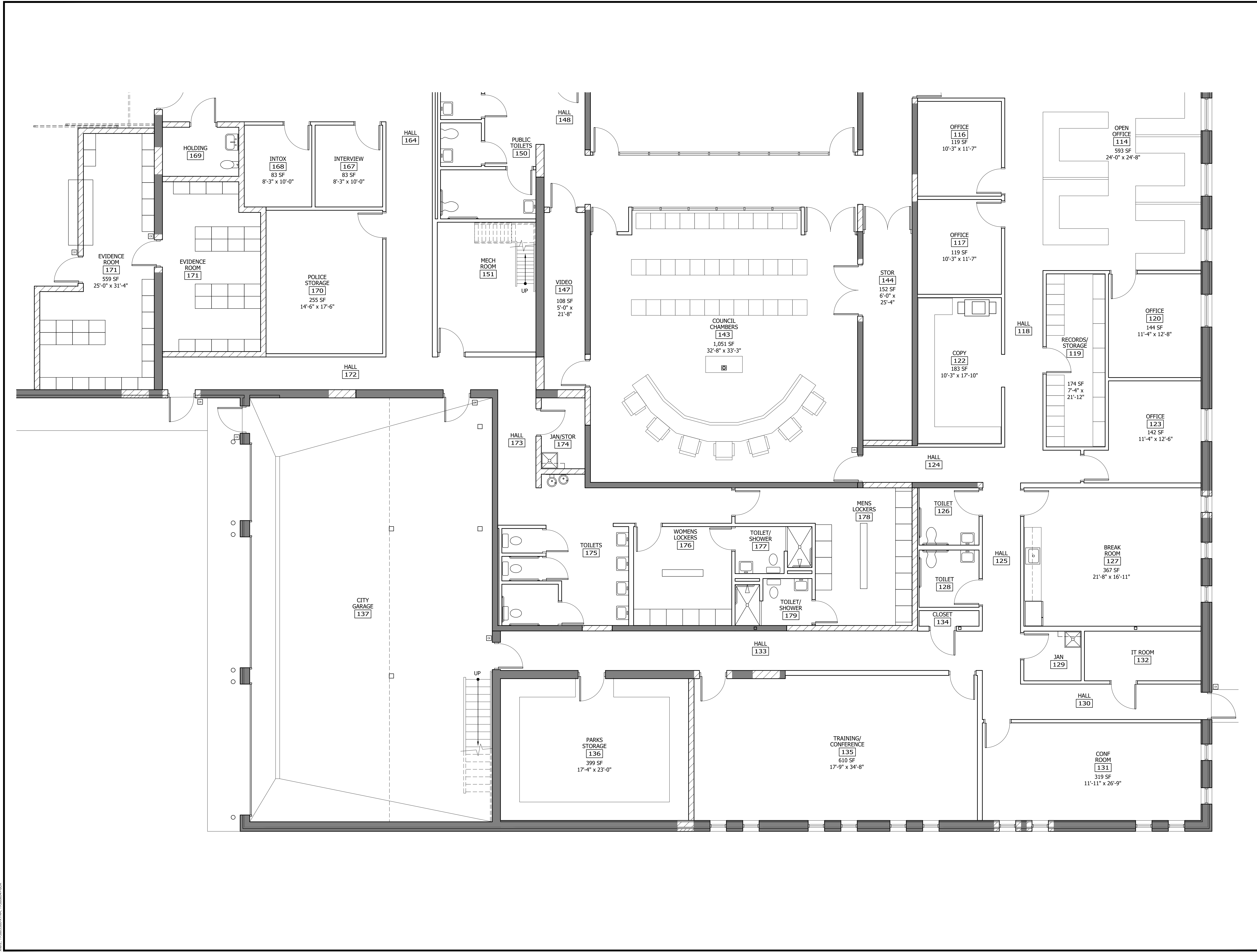
SHEET NUMBER
A102

THE CONTRACTOR SHALL VERIFY AND BE RESPONSIBLE FOR ALL DIMENSIONS. DO NOT SCALE THE DRAWINGS. THE CONTRACTOR SHALL VERIFY ALL DIMENSIONS AND DRAWINGS ARE THE PROPERTY OF STANTEC. REPRODUCTION OR USE FOR ANY PURPOSE OTHER THAN THAT AUTHORIZED BY STANTEC IS FORBIDDEN.



Plot Date: 03/01/2023 4:45pm
 Project: 19380649_A401.dwg
 User: 19380649_11/14/19 19380649.dwg

THE CONTRACTOR SHALL VERIFY AND BE RESPONSIBLE FOR ALL DIMENSIONS. DO NOT SCALE THE DRAWING. ALL DIMENSIONS AND LOCATIONS SHOWN ON THIS DRAWING SHALL TAKE PRECEDENCE OVER THE CONSTRUCTION DOCUMENTS. ANY DIMENSIONS OR LOCATIONS SHOWN ON THIS DRAWING THAT ARE NOT SHOWN ON THE CONSTRUCTION DOCUMENTS ARE FOR INFORMATION ONLY AND SHALL NOT BE USED FOR CONSTRUCTION.



WE HEREBY CERTIFY THAT WE HAVE PREPARED AND CHECKED THIS DOCUMENT OR REPORT AND THAT I AM A DULY LICENSED ARCHITECT UNDER THE LICENSE LAW OF MINNESOTA.
PRINT NAME: BRUCE E. LAUBACH
SIGNATURE: _____
DATE: 04/15/2023
LIC. NO.: 202015

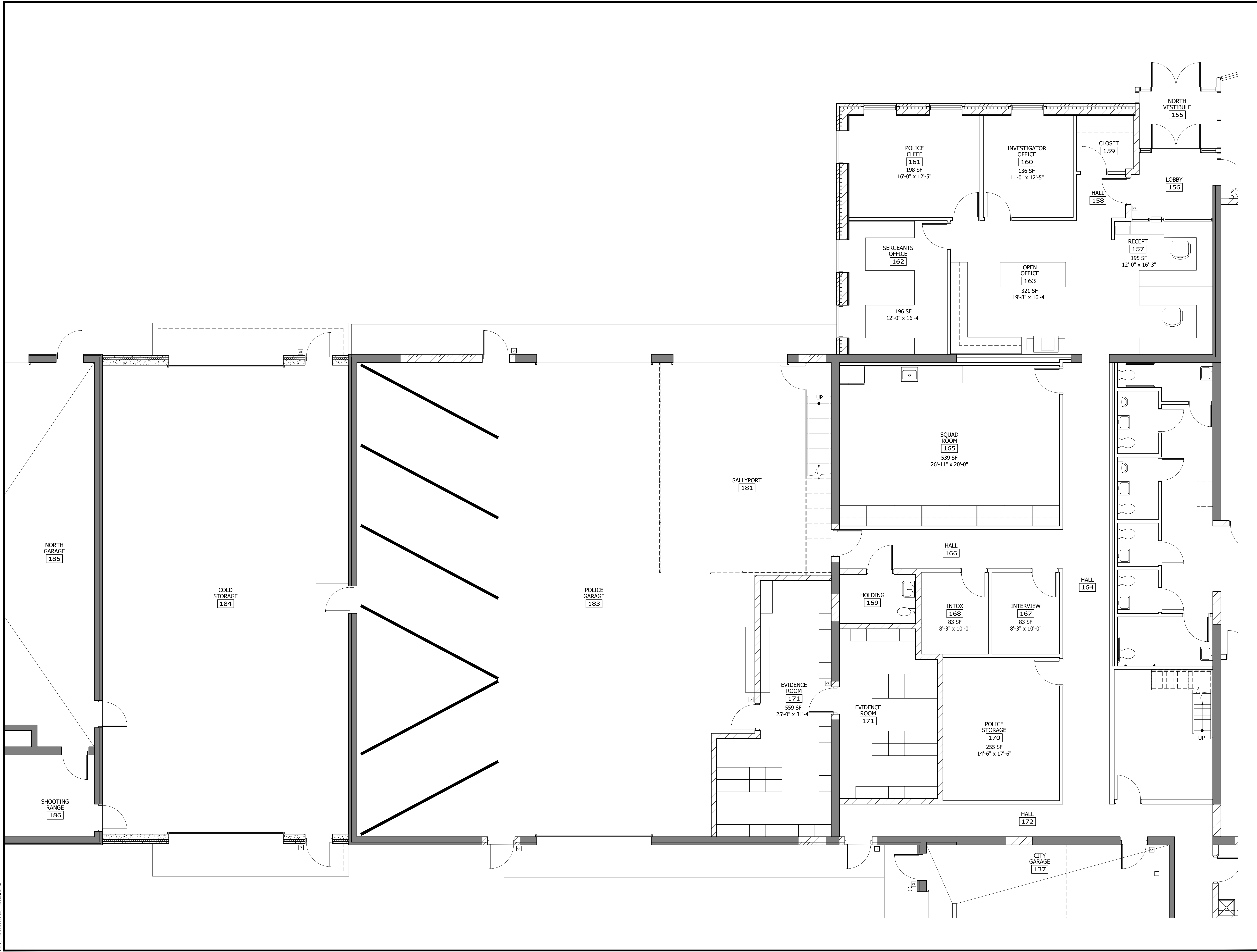
CITY OF SPRING LAKE PARK, MINNESOTA
CITY HALL RENOVATION/EXPANSION
PARTIAL ENLARGED FLOOR PLAN

NO	REVISION	DATE

SURVEY	
DRAWN	BPP
DESIGNED	BPP
CHECKED	
APPROVED	
PROJ. NO.	193806049
SHEET NUMBER	A402

Plot Date: 03/10/2023 4:43pm
PROJECT: 193806049 - City Hall Renovation/Expansion
SHEET: 193806049-A402.dwg

THE CONTRACTOR SHALL VERIFY AND BE RESPONSIBLE FOR ALL DIMENSIONS. DO NOT SCALE THE DRAWING. THE CONTRACTOR SHALL VERIFY ALL DIMENSIONS AND DRAWINGS ARE THE PROPERTY OF STANTEC. REPRODUCTION OF THIS DRAWING FOR ANY PURPOSE OTHER THAN THAT AUTHORIZED BY STANTEC IS FORBIDDEN.



Per Date: 08/10/2023 4:45pm
PROJECT: 193856049-0000-0000-0000-0000-0000-0000
DRAWN BY: 193856049-0000-0000-0000-0000-0000-0000

DESIGNED BY: BRUCE P. LAUBSON
DRAWN BY: BRUCE P. LAUBSON
CHECKED BY: BRUCE P. LAUBSON
APPROVED BY: BRUCE P. LAUBSON
DATE: 08/10/2023
LIC. NO.: 20210

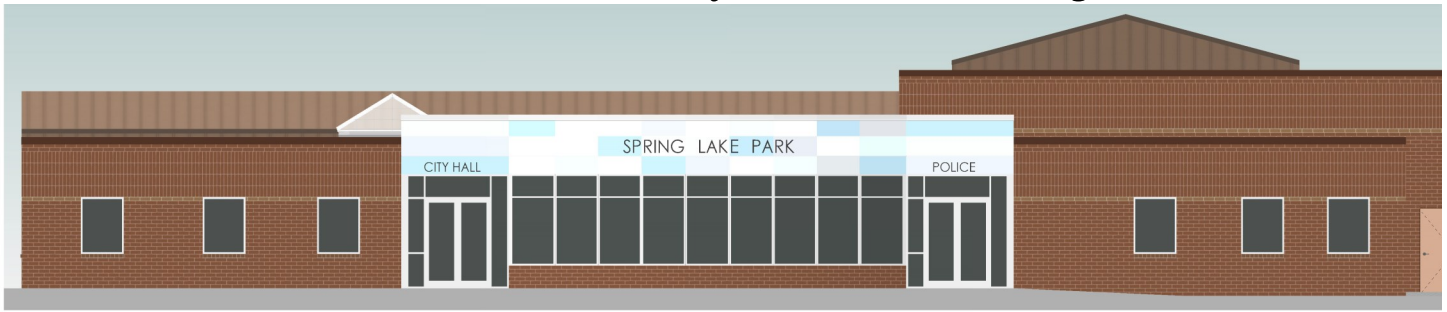
CITY OF SPRING LAKE PARK, MINNESOTA
CITY HALL RENOVATION/EXPANSION
PARTIAL ENLARGED FLOOR PLAN

NO.	REVISION	DATE

SURVEY	BPP
DRAWN	BPP
DESIGNED	BPP
CHECKED	BPP
APPROVED	BPP

PROJ. NO. 193856049
SHEET NUMBER
A403

Spring Lake Park City Hall Renovation/Expansion Project



As part of the capital improvement plan process, the City began to evaluate the long-term need for space and repairs at City Hall. In 2017, the City hired architect Leo A. Daly to complete a space needs study to determine future space needs and identify options to meet those future needs.

The study identified significant deficiencies at City Hall, including:

- Lack of ADA accessibility.
- Inadequate restrooms facilities.
- Inefficient heating/cooling systems.
- Lack of energy efficient lighting and insulation.
- Insufficient public meeting and program spaces.

The City Council, after reviewing the various options ranging in cost from \$8.5 million for a renovation to \$16.1 million for a new facility, decided that a complete renovation and small expansion of the existing facility was the most judicious use of public funds. The City Council contracted with its City Engineer, Stantec, to prepare a preliminary design for the renovation/expansion.

The proposed preliminary design benefits our residents by:

- Enlarging public meeting and program spaces to enhance sense of community.
- Increasing the number of restroom facilities to accommodate public gatherings of up to 200 people.
- Creating a separate entrance for the Police Dept.
- Expanding technology to promote citizen engagement.
- Increase operational efficiency for all City departments.
- Improving ADA accessibility throughout the building.
- Strengthening building security for public and staff.
- Enhancing energy efficiency of the building.

The City Council anticipates soliciting bids for the project in November 2023 with an estimated construction start date of February 2024.

City Hall Open House

Monday, May 8, 2023
5:30pm—7:30pm
Spring Lake Park City Hall

City Hall by the Numbers

- **1977 — City Hall opens at 1301 81st Ave. NE**
- **1987 — North Garage constructed for Public Works storage and Police firing range**
- **1994 — Police Addition constructed**
- **1996 — New carpet/office equipment installed; furnace system replaced**
- **2013 — Roof replaced**
- **2017—Space Needs Study Presented**
- **2022—Preliminary Design Completed**

Contact Us

Phone: 763-784-6491

Email: info@slpmn.org

www.slpmn.org/citycouncil/page/city-hall-project



Spring Lake Park
History. Community. Home.

