



CITY COUNCIL MEETING AGENDA

March 05, 2025 at 5:30 PM

Council Chambers at City Hall - 1123 W. Lake St. Sandpoint, Idaho

Call to Order

Roll Call

Pledge of Allegiance

Announcements and Reports

- [1.](#) Bonner County Report on Obstruction Removal Project at Sandpoint Airport

Public Comments

Consent Calendar - action item

- [2.](#) Approval of the Minutes from Council's February 19, 2025, Meeting - **action item**
- [3.](#) Payables Report / Bills for Payment Approval - **action item**

Old/Unfinished Business - none

New Business

- [4.](#) Presentation: Downtown Revitalization Phase 3 Update

Executive Session

- [5.](#) Decision to Convene in Executive Session under Idaho Code § 74-206(1)(d) to consider records that are exempt from disclosure as provided in Chapter 1, Title 74, Idaho Code, and Idaho Code § 74-206(1)(f) to communicate with legal counsel to discuss the legal ramifications of and legal options for pending litigation or controversies not yet being litigated but imminently likely to be litigated - **action item**
- [6.](#) Executive Session under Idaho Code §§ 74-206(1)(d) and (f), as described above

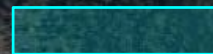
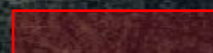

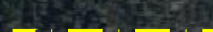
Reconvene Regular Meeting and Adjourn

Public Participation Options and Information

Before the meeting, comment in writing: Email cityclerk@sandpointidaho.gov or deliver to City Hall.
Attend in person: See above for meeting location. Seating available on first-come, first-served basis.
Attend remotely: Register at <https://www.sandpointidaho.gov/meetings>.
After the meeting, view the recording on YouTube: <https://www.youtube.com/c/CityofSandpoint>.
For questions or requests for special accommodation: At least 48 hours prior to the meeting, send a message to the email address above or call (208) 263-3310.

SANDPOINT AIRPORT OBSTRUCTION REMOVAL PROJECT PROJECT OVERVIEW

LEGEND

-  TREE REMOVAL AREA (CITY OF SANDPOINT)
-  TREE REMOVAL AREA (SANDPOINT AIRPORT)
-  RUNWAY APPROACH SURFACE
-  AIRPORT PROPERTY LINE



LAKE PEND OREILLE



**SANDPOINT AIRPORT
OBSTRUCTION REMOVAL PROJECT**

Item # 1.

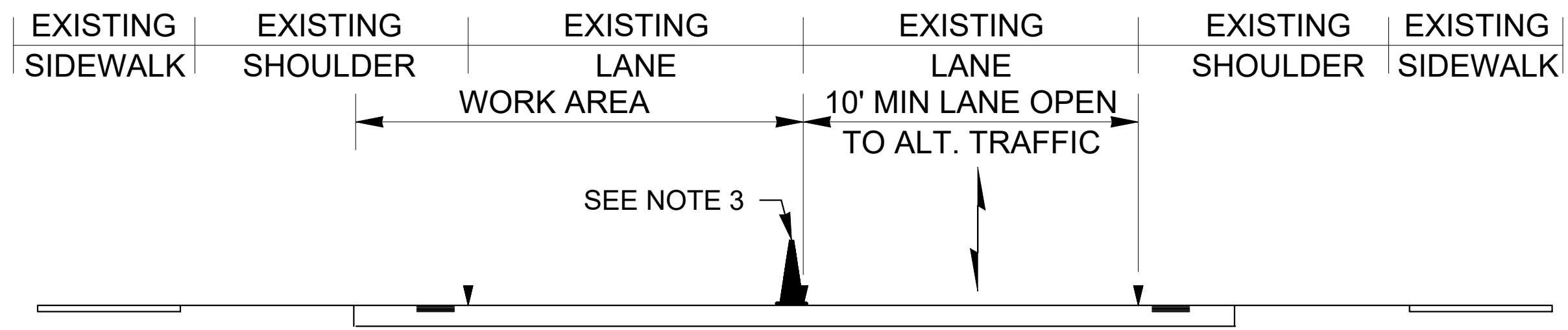
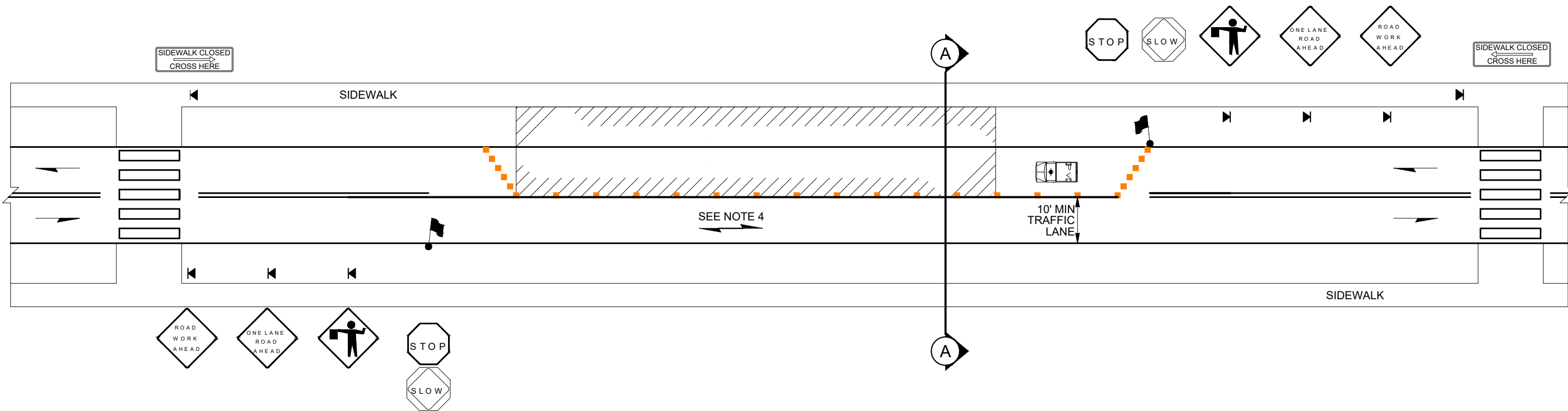
SCHWEITZER CUTTOFF RD

N BOYER AVE 1 LANE TRAFFIC CONTROL

SAND CREEK

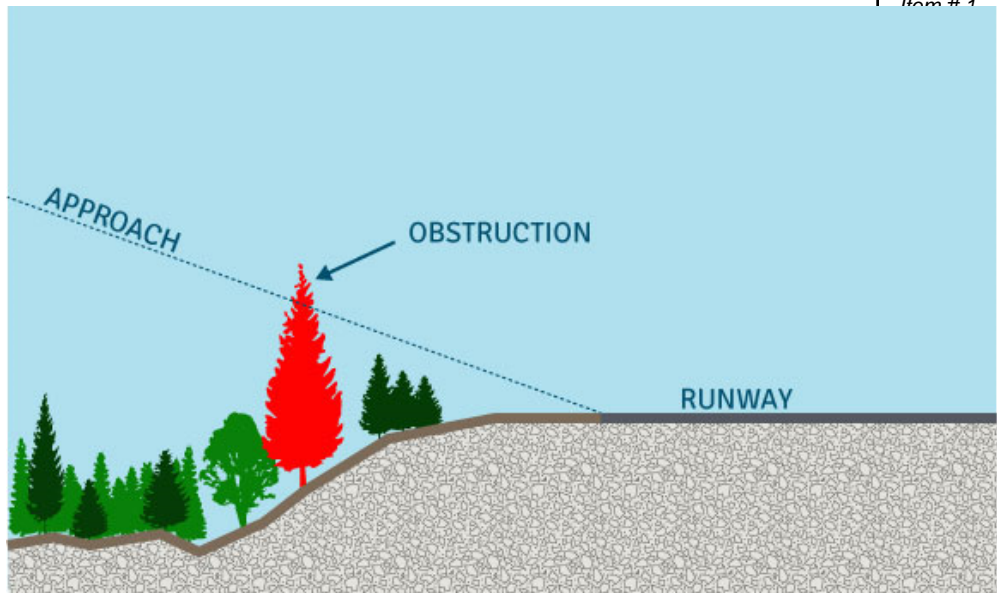
**RUNWAY APPROACH SURFACE
REMOVAL OF TREES
STUMP GRINDING
BUSH/SHRUB REPLANTING
SEPTEMBER 2025
(14 DAY CONSTRUCTION)**





SECTION A-A

ALTERNATING 1-LANE, 2-WAY TRAFFIC: FLAGGER-CONTROLLED



1.



PILOT GETAWAYS.
ADVENTURE TRAVEL FOR AVIATORS

www.pilotgetaways.com

6



CITY COUNCIL MEETING MINUTES

February 19, 2025 at 5:30 PM

Council Chambers at City Hall - 1123 W. Lake St. Sandpoint, Idaho

Call to Order

City Council President Deb Ruehle called the regular meeting of the Sandpoint City Council to order at 5:30 p.m. on Wednesday, February 19, 2025, in Council chambers at City Hall, 1123 West Lake Street, Sandpoint, Idaho.

Roll Call

PRESENT

Mayor Jeremy Grimm, attending remotely
 Councilor Deb Ruehle, Council President, presiding
 Councilor Joel Aispuro
 Councilor Justin Dick
 Councilor Kyle Schreiber
 Councilor Pam Duquette
 Councilor Rick Howarth

As required by the City's adopted Code of Ethics and Civility, as the presiding officer, Council President Ruehle identified law enforcement personnel in the room serving as sergeant-at-arms for the meeting: Sandpoint Police Sgt. Mike Hutter.

Pledge of Allegiance

Council President Ruehle led all present in the Pledge of Allegiance.

Announcements and Reports

Mayor Grimm provided information and clarification regarding the City's proposed parking management plan, as well as the separate issue regarding the number of parking spaces planned for the new hotel near Sandpoint City Beach, proposed to be built at 56 Bridge Street, and encouraged those with questions or concerns to reach out directly to him or to City staff.

Council members provided reports from recent meetings of the citizen advisory boards on which they serve as Council liaison, with Councilor Dick additionally reporting from meetings of the SPOT Bus Board, on which he serves as the City's representative.

At the invitation of the Council President, Department Directors and staff provided reports on projects and activities in their respective departments.

Public Comments

Council President Ruehle recited the rules and procedure for public comment, followed by an opportunity for comments from the public regarding Consent Calendar and Old/New Business items on the agenda and other topics relevant to the business of the City of Sandpoint. Information only; no Council action.

Consent Calendar

Council President Ruehle noted for the record the amount of bills presented for payment approval, and the Consent Calendar was **approved** by a unanimous vote of the Council.

Motion made by Councilor Schreiber, Seconded by Councilor Aispuro.

Voting Yea: Councilor Ruehle, Councilor Aispuro, Councilor Dick, Councilor Schreiber, Councilor Duquette, Councilor Howarth

1. The minutes from Council's February 5, 2025, Regular Meeting were approved as presented.
2. Bills in the amount of \$1,026,989.52 for regular payables were approved for payment.

Old/Unfinished Business - none

New Business

3. Presentation: FY2025 First Quarter Financial Report Review

Finance Director Sarah Lynds provided an overview of the City's ClearGov financial transparency website and reviewed the Fiscal Year 2025 First Quarter Financial Report, followed by FY2025 capital project reports from Public Works Director Holly Ellis and Community Planning and Development Director Jason Welker, who fielded questions from the Council members. Information only; no Council action.

Council President Ruehle recessed the meeting at 6:55 p.m., reconvening at 7:00 p.m.

4. Presentation: Update on Cedar Street Reconstruction Project Preliminary Design

Ms. Ellis provided an update on the preliminary design for the Cedar Street reconstruction project and fielded questions from Council members, who requested the scheduling of a workshop for further discussion regarding this project. Information only; no Council action.

5. **Resolution 25-009** LHTAC/Local Agreement 2024 Local Children Pedestrian Safety (CPS) Program Division Avenue Corridor Safety Improvement Project, Phase 2, City of Sandpoint CPS#24

Following a brief presentation by Ms. Ellis, who fielded questions from the Council members, this resolution/agreement was **approved** by a unanimous vote of the Council.

Motion made by Councilor Dick, Seconded by Councilor Aispuro.

Voting Yea: Councilor Ruehle, Councilor Aispuro, Councilor Dick, Councilor Schreiber, Councilor Duquette, Councilor Howarth

6. **Resolution 25-010** Accepting the Preliminary Design for Rehabilitation of the Downtown Parking Lot and Authorizing Staff to Transition the Project to the Final Design Stage and Advertise for Bids

Following an introduction by Ms. Ellis and additional information provided by Project Manager Erik Bush, City Engineer Brandon Staglund, and Mayor Grimm, along with questions from and discussion amongst the Council members, the Resolution was **approved under the condition that the design incorporates the recommendations of the Urban Forestry Commission.**

Motion made by Councilor Aispuro, Seconded by Councilor Dick.

Voting Yea: Councilor Ruehle, Councilor Aispuro, Councilor Dick

Voting Nay: Councilor Schreiber, Councilor Duquette, Councilor Howarth

Mayor Grimm voted in the affirmative to break the tie vote of Council.

Adjourn

With no further business on the agenda, the meeting adjourned at 8:47 p.m.

I presided over this meeting and can confirm that the foregoing minutes, prepared by the City Clerk, were approved by City Council during their meeting held _____, 2025.

Deb Ruehle, City Council President

Attest: Melissa Ward, City Clerk



CITY OF SANDPOINT INVOICE REGISTER
PAYABLE DATES OF: 02/20/2025 THROUGH 03/05/2025

Item # 3.

Invoice Number	Invoice Description Department/Division	GL Account Description	Line Item Amount	Invoice Amount
Vendor: ACCURATE TESTING LABS LLC				
144068	WWTP: 2 MERCURY LOW LEVEL TESTS WASTEWATER TREATMENT	TECH SERVICES - LABORATORY	260.00	\$260.00
144145	WTP: BACTERIA TESTING -NORTH WATER TREATMENT	TECH SERVICES - LABORATORY	150.00	\$150.00
144241	WTP: BACTERIA TESTING -SOUTH WATER TREATMENT	TECH SERVICES - LABORATORY	150.00	\$150.00
Total For: ACCURATE TESTING LABS LLC				\$560.00
Vendor: ADVANCED DIRT WORKS & DEVELOPMENT				
221 - 1	SC: BOYER SIDEWALK REPAIR -CONCRETE WASTEWATER COLLECTIONS	SERVICES - SIDEWALK/CURB REPAIR/FURNISHI	1,735.00	\$1,735.00
Total For: ADVANCED DIRT WORKS & DEVELOPMENT				\$1,735.00
Vendor: ALPINE MOTORS COMPANY INC				
161038	REPLACE LEFT FRONT WHEEL BEARING - CRO P1531 POLICE DEPARTMENT	SERVICES - AUTOMOTIVE - R&M	643.32	\$643.32
Total For: ALPINE MOTORS COMPANY INC				\$643.32
Vendor: AM HARDWARE				
53393	SC: PADLOCKS WITH COVER AND KEY CORES WASTEWATER COLLECTIONS	OPERATIONAL SUPPLIES/EQUIPMENT	1,620.00	\$1,652.00
	WASTEWATER COLLECTIONS	OPERATIONAL SUPPLIES/EQUIPMENT	32.00	
Total For: AM HARDWARE				\$1,652.00
Vendor: AMAZON.COM SALES, INC				
1J3X-PF74-44CP	WTP: SILICONE LUBRICANT & SEALANT WATER TREATMENT	OPERATIONAL SUPPLIES/EQUIPMENT	46.05	\$53.19
	WATER TREATMENT	OPERATIONAL SUPPLIES/EQUIPMENT	7.14	
1K9M-DLH4-Y44	WTP: EPOXY DISPENSER GUN & APPLICATOR WATER TREATMENT	OPERATIONAL SUPPLIES/EQUIPMENT	85.44	\$85.44
1Q4F-QJJL-DQV	ACRYLIC SAFETY DOMES FOR CAMERAS PARK MAINTENANCE & CAPITAL	FACILITY SUPPLIES	6.99	\$367.92
	PARK MAINTENANCE & CAPITAL	FACILITY SUPPLIES	(6.99)	

Invoice Number	Invoice Description Department/Division	GL Account Description	Line Item Amount	Invd	Item # 3.
	PARK MAINTENANCE & CAPITAL	FACILITY SUPPLIES	91.98		
	PARK MAINTENANCE & CAPITAL	FACILITY SUPPLIES	91.98		
	PARK MAINTENANCE & CAPITAL	FACILITY SUPPLIES	91.98		
	PARK MAINTENANCE & CAPITAL	OPERATIONAL SUPPLIES/EQUIPMENT	91.98		
Total For: AMAZON.COM SALES, INC					\$506.55
Vendor: AMIN PARYAVI					
13226	REFUND FOR DOUBLE CITATION PAYMENT #13226 UNCLASSIFIED	PARKING FINES	75.00		\$75.00
Total For: AMIN PARYAVI					\$75.00
Vendor: AUTO HAUS INC					
8942	SHOP: AXEL NUT SOCKET STREET MAINTENANCE DIVISION	VEHICLE & MACH SUPPLIES/PARTS	6.66		\$19.99
	WATER DISTRIBUTION	VEHICLE & MACH SUPPLIES/PARTS	6.66		
	WASTEWATER COLLECTIONS	VEHICLE & MACH SUPPLIES/PARTS	6.67		
Total For: AUTO HAUS INC					\$19.99
Vendor: B&E ELECTRIC INC					
CS4278	SCADA WATER & WASTEWATER UPGRADES - CO#3 WASTEWATER CAPITAL PROJECTS	CAPITAL IMPROVEMENTS OTHER THAN BUILDING	13,917.50		\$23,322.50
	WASTEWATER CAPITAL PROJECTS	CAPITAL IMPROVEMENTS OTHER THAN BUILDING	9,405.00		
CS4277	SCADA WATER/WASTEWATER UPGRADES 1.20.25-2.18.25 WASTEWATER CAPITAL PROJECTS	CAPITAL IMPROVEMENTS OTHER THAN BUILDING	5,925.82		\$8,844.50
	WATER TREATMENT	CAPITAL IMPROVEMENTS OTHER THAN BUILDING	2,918.68		
Total For: B&E ELECTRIC INC					\$32,167.00
Vendor: BIG BELLY SOLAR LLC					
55741	BATTERIES FOR BIG BELLY TRASH CANS SANITATION/GARBAGE COLLECTION	OPERATIONAL SUPPLIES/EQUIPMENT	330.00		\$330.00
Total For: BIG BELLY SOLAR LLC					\$330.00
Vendor: BOUNDARY TRACTOR YAMAHA					
BTC-2117626	PIPE STRAIGHT PART FOR CHAIN SAW- ROW MAINT PARK MAINTENANCE & CAPITAL	VEHICLE & MACH SUPPLIES/PARTS	12.99		\$12.99
Total For: BOUNDARY TRACTOR YAMAHA					\$12.99
Vendor: CC VENDOR - WELLS FARGO					
69740796	WTP: WATER OP LICENSE RENEW -J. LANDER WATER TREATMENT	LICENSES/DUES & SUBSCR (JOB RELATED)	55.00		\$55.00
111-5842212-44	MILWAUKEE CORDLESS 6-TOOL COMBO KIT - ALL PARKS				\$5

Invoice Number	Invoice Description Department/Division	GL Account Description	Line Item Amount	Invd	Item # 3.
	PARK MAINTENANCE & CAPITAL	TOOLS	584.99		
111-2813834-51	ATV SNOW PLOW MNT - ROW PLOWING PARK MAINTENANCE & CAPITAL	OPERATIONAL SUPPLIES/EQUIPMENT	81.53		\$81.53
114-7047265-55	FELT TIP PENS - PW ADMIN PUBLIC WORKS ADMINISTRATION	OFFICE SUPPLIES/EQUIPMENT	11.52		\$11.52
114-6876907-96	BROCHURE HLDRS, HIGHLIGHTERS, WALL ORGANIZ, PUBLIC WORKS ADMINISTRATION	NOTE PADS OFFICE SUPPLIES/EQUIPMENT	48.54		\$62.22
	WATER TREATMENT	OFFICE SUPPLIES/EQUIPMENT	13.68		
111-6104238-55	UNDELIVERED SHELVING UNIT REFUND JAMES E. RUSSELL SPORTS CENTER FACILITY	OPERATIONAL SUPPLIES/EQUIPMENT	(47.59)		\$(47.59)
4BV43763E9109	BARCODE KEY TAGS JER MEMBERSHIPS JAMES E. RUSSELL SPORTS CENTER FACILITY	OPERATIONAL SUPPLIES/EQUIPMENT	549.41		\$549.41
111-6104238-55	UNDELIVERED SUPPLIES -JER CREDIT JAMES E. RUSSELL SPORTS CENTER FACILITY	OPERATIONAL SUPPLIES/EQUIPMENT	(37.72)		\$(37.72)
00037205	FEB'25 COFFEE BRK - FRUIT, BAGELS, YOGURT CENTRAL SERVICES DEPARTMENT	SUSTENANCE/FOOD	66.14		\$66.14
073634	FEB'25 COFFEE BREAK - DONUTS, CRMCHSE, YOGURT CENTRAL SERVICES DEPARTMENT	SUSTENANCE/FOOD	57.70		\$57.70
80867678686	2025 IRWA SPRING CONF REGISTRATION -HIGGINS, AKINS, ALBIN, ST. MARIE -T00 WASTEWATER COLLECTIONS	TRAINING AND TRAVEL	325.00		\$1,300.00
	WATER DISTRIBUTION	TRAINING AND TRAVEL	650.00		
	WASTEWATER TREATMENT	TRAINING AND TRAVEL	325.00		
87655	WD/SC: OFFICE SUPPLIES WATER DISTRIBUTION	OFFICE SUPPLIES/EQUIPMENT	64.44		\$128.88
	WASTEWATER COLLECTIONS	OFFICE SUPPLIES/EQUIPMENT	64.44		
2204632	BLUEBEAM LICENSE AECO SUBSCRIPTION X3 INFORMATION TECHNOLOGY DIVISION	SOFTWARE/SAAS - PDF/BLUEBEAM/AUTOCAD	990.00		\$990.00
I-0000337278	BLUEBEAM LICENSE AECO SUBSCRIPTION INFORMATION TECHNOLOGY DIVISION	SOFTWARE/SAAS - PDF/BLUEBEAM/AUTOCAD	660.00		\$660.00
1588585	GPS SERVICE FEB '25 - PATROL VEHICLES POLICE DEPARTMENT	TECH SERVICES - PUBLIC SAFETY MISC	223.20		\$223.20
020625	PERSONAL CHARGE - REIMBURSED UNCLASSIFIED	SUSPENSE ACCOUNT	56.41		\$56.41
87242	STAPLES - 3 DESKTOP CALENDERS POLICE DEPARTMENT	OFFICE SUPPLIES/EQUIPMENT	14.97		\$14.97
0272396509274	FLIGHT FOR T. RILEY ILETS TRAINING BOISE -T0063 POLICE DEPARTMENT	TRAINING AND TRAVEL	166.60		\$166.60

Invoice Number	Invoice Description Department/Division	GL Account Description	Line Item Amount	Invd	Item # 3.
112-6953040-40	PICTURE FRAMES - PD LIFE PICTURES POLICE DEPARTMENT	FACILITY SUPPLIES	94.04		\$94.04
9XH82859EP089	ICOM RADIO SEPARATION CABLE POLICE DEPARTMENT	OPERATIONAL SUPPLIES/EQUIPMENT	66.05		\$66.05
112-9856557-00	PICTURE FRAMES - CHIEFS & RETIRED OFFICERS -WALL DISPLAY POLICE DEPARTMENT	FACILITY SUPPLIES	73.97		\$73.97
3C24006196797	ICOM RADIO SEPERATION CABLE POLICE DEPARTMENT	OPERATIONAL SUPPLIES/EQUIPMENT	94.00		\$94.00
000027100	CALIBRATION GAS FOR BREATH TESTING POLICE DEPARTMENT	SERVICES - EQUIPMENT - R&M	523.85		\$523.85
114-7464565-16	DESK LIGHT, PHONE STAND, MONITOR RAISER - UB DESK FINANCE DEPARTMENT	OPERATIONAL SUPPLIES/EQUIPMENT	99.07		\$99.07
VS015594	RECTRAC SOFTWARE TRAINING RECREATION PROGRAMS	SOFTWARE/SAAS - REC 1/TEAMSIDELINE	386.25		\$386.25
113-8201213-72	KID'S CAMP CRAFT SUPPLIES RECREATION PROGRAMS	OPERATIONAL SUPPLIES/EQUIPMENT	40.83		\$40.83
45931656242991	WAL-MART KID'S CAMP CRAFT SUPPLIES RECREATION PROGRAMS	OPERATIONAL SUPPLIES/EQUIPMENT	53.72		\$53.72
Total For: CC VENDOR - WELLS FARGO					\$6,355.04

Vendor: CIVICPLUS INC

326096	CIVIC REC SOFTWARE FEES -DEC'24 RECREATION PROGRAMS	SOFTWARE/SAAS - REC 1/TEAMSIDELINE	40.00		\$200.16
	RECREATION PROGRAMS	SOFTWARE/SAAS - REC 1/TEAMSIDELINE	3.41		
	CITY BEACH RV PARK	SOFTWARE/SAAS - REC 1/TEAMSIDELINE	1.05		
	GOVERNMENT BUILDING & GROUNDS DIVISION	SOFTWARE/SAAS - REC 1/TEAMSIDELINE	4.82		
	JAMES E. RUSSELL SPORTS CENTER FACILITY	SOFTWARE/SAAS - REC 1/TEAMSIDELINE	150.88		
Total For: CIVICPLUS INC					\$200.16

Vendor: CLYDE'S TOWING LLC

11188	ST: TOW FROM 58 BRIDGE TO CITY SHOP STREET MAINTENANCE DIVISION	SERVICES - AUTOMOTIVE - R&M	192.40		\$192.40
Total For: CLYDE'S TOWING LLC					\$192.40

Vendor: COMMERCIAL TIRE INC

55-38238	ST: LABOR ON TIRES FOR LOADER STREET MAINTENANCE DIVISION	SERVICES - EQUIPMENT - R&M	378.00		\$665.96
	STREET MAINTENANCE DIVISION	VEHICLE & MACH SUPPLIES/PARTS	95.96		
	STREET MAINTENANCE DIVISION	VEHICLE & MACH SUPPLIES/PARTS	192.00		

Invoice Number	Invoice Description Department/Division	GL Account Description	Line Item Amount	Invd	Item # 3.	t
55-38063	ST: TIRES FOR TWO LOADERS STREET MAINTENANCE DIVISION STREET MAINTENANCE DIVISION	VEHICLE & MACH SUPPLIES/PARTS VEHICLE & MACH SUPPLIES/PARTS	12,049.92 8.00			\$12,057.92
Total For: COMMERCIAL TIRE INC						\$12,723.88

Vendor: CO-OP GAS & SUPPLY CO.

32001	WD: HOSE HANGER WALL MOUNT WATER DISTRIBUTION	OPERATIONAL SUPPLIES/EQUIPMENT	16.99			\$16.99
32621	WTP: WIPES, BROOM, CLEANER WATER TREATMENT	CLEANING SUPPLIES	28.57			\$28.57
32152	WWTP: PROPANE WASTEWATER TREATMENT	FACILITY SUPPLIES	18.98			\$18.98
49694	WWTP: PROPANE WASTEWATER TREATMENT	FACILITY SUPPLIES	19.25			\$19.25
73360	WWTP: PROPANE WASTEWATER TREATMENT	FACILITY SUPPLIES	38.23			\$38.23
72718	WWTP: PROPANE WASTEWATER TREATMENT	FACILITY SUPPLIES	18.70			\$18.70
49304	WELDING TIPS/ELECTRICAL WIRE PARK MAINTENANCE & CAPITAL	OPERATIONAL SUPPLIES/EQUIPMENT	39.97			\$39.97
Total For: CO-OP GAS & SUPPLY CO.						\$180.69

Vendor: EDNETICS INC

127928	FIX FOYER DOORS -NOT RESPONDING TO KEY CARDS INFORMATION TECHNOLOGY DIVISION	CAPITAL EQUIPMENT & MACHINERY	205.00			\$205.00
Total For: EDNETICS INC						\$205.00

Vendor: ENDRESS & HAUSER INC

6002663237	WWTP: ELECTROMAGNETIC FLOW METER WASTEWATER TREATMENT WASTEWATER TREATMENT	OPERATIONAL SUPPLIES/EQUIPMENT OPERATIONAL SUPPLIES/EQUIPMENT	1,311.18 29.76			\$1,340.94
Total For: ENDRESS & HAUSER INC						\$1,340.94

Vendor: FASTENAL COMPANY

IDCOE214046	SHOP: 1/2 INCH BOLTS STREET MAINTENANCE DIVISION WATER DISTRIBUTION WASTEWATER COLLECTIONS	OPERATIONAL SUPPLIES/EQUIPMENT OPERATIONAL SUPPLIES/EQUIPMENT OPERATIONAL SUPPLIES/EQUIPMENT	22.72 22.71 22.72			\$68.15
Total For: FASTENAL COMPANY						\$

Vendor: GRAINGER INC

Invoice Number	Invoice Description Department/Division	GL Account Description	Line Item Amount	Invd	Item # 3.	t
9415991562	WTP: VACUUM AND BATTERY PACK WATER TREATMENT	FACILITY SUPPLIES	321.00			\$321.00
9410083829	WTP: (REFUND) RESIPRATOR CARTRIDGE WATER TREATMENT	SAFETY/PPE/MEDICAL SUPPLIES/EQUIPMENT	(147.42)			\$(147.42)
9408197110	WTP: COMBO RESPIRATOR FILTER WATER TREATMENT	SAFETY/PPE/MEDICAL SUPPLIES/EQUIPMENT	62.37			\$62.37
9404156565	WTP: LENS CLEANING WIPES WATER TREATMENT	OPERATIONAL SUPPLIES/EQUIPMENT	32.91			\$32.91
Total For: GRAINGER INC						\$268.86
Vendor: HACH COMPANY						
14371015	WTP: MEMBRANE KIT/TURBIDITY ANALYZER WATER TREATMENT	LABORATORY SUPPLIES	428.65			\$428.65
Total For: HACH COMPANY						\$428.65
Vendor: IDAHO DEPT OF ENVIRON QUALITY						
CI8065	WTP: 3RD QTR DRINK WTR ASSESSMENTS FY'25 WATER TREATMENT	TECH SERVICES - REGULATORY AGENCIES	3,674.25			\$3,674.25
Total For: IDAHO DEPT OF ENVIRON QUALITY						\$3,674.25
Vendor: INSIGHT DISTRIBUTING INC						
0521779-IN	ICE MELT - COMM HALL & CITY HALL GOVERNMENT BUILDING & GROUNDS DIVISION	OPERATIONAL SUPPLIES/EQUIPMENT	634.55			\$1,269.10
	GOVERNMENT BUILDING & GROUNDS DIVISION	OPERATIONAL SUPPLIES/EQUIPMENT	634.55			
Total For: INSIGHT DISTRIBUTING INC						\$1,269.10
Vendor: INTERSTATE CONCRETE & ASPHALT						
PAY APP 3	FIR ST REHAB CONSTR -THRU 11/1/24 STREET CAPITAL & PROJECTS	CONSTRUCTION SERVICES - NON CAPITAL	1,683.41			\$31,677.74
	WATER CAPITAL PROJECTS	CAPITAL IMPROVEMENTS OTHER THAN BUILDING	14,827.36			
	STREET CAPITAL & PROJECTS	CONSTRUCTION SERVICES - NON CAPITAL	12,521.97			
	STREET CAPITAL & PROJECTS	CONSTRUCTION SERVICES - NON CAPITAL	2,645.00			
Total For: INTERSTATE CONCRETE & ASPHALT						\$31,677.74
Vendor: JACOBS ENGINEERING GROUP INC						
W3Y13702-08	PLANNER SERVICES 11/23/24-12/27/24 PLANNING DIVISION	TECH SERVICES - PLANNING	999.00			\$999.00
Total For: JACOBS ENGINEERING GROUP INC						\$999.00
Vendor: JARED RYAN SUNDBERG						
1805	POWER TAKE OFF REPAIR/TRANSMISSION WORK 1141					\$4,114

Invoice Number	Invoice Description Department/Division	GL Account Description	Line Item Amount	Invd	Item # 3.
1810	FIRE DEPARTMENT - SANDPOINT 1132 ANNUAL PM SERVICES	SERVICES - AUTOMOTIVE - R&M	4,175.00		
					\$700.00
1809	FIRE DEPARTMENT - SANDPOINT 1131 COOLANT LEAK AND PM SERVICE	SERVICES - AUTOMOTIVE - R&M	700.00		
					\$3,670.00
1808	FIRE DEPARTMENT - SANDPOINT 1141 PM SERVICE	SERVICES - AUTOMOTIVE - R&M	1,000.00		
			2,670.00		\$1,470.00
1806	FIRE DEPARTMENT - SANDPOINT 1141 EXHAUST GAS RECIRCULATION FIX	SERVICES - AUTOMOTIVE - R&M	1,470.00		
			1,137.50		\$1,137.50
Total For: JARED RYAN SUNDBERG					\$11,152.50
Vendor: KG & T SEPTIC INC					
48971	WWTP: VAC TRAILER FOR GREASE BUILD-UP WASTEWATER TREATMENT	SERVICES - EQUIPMENT - R&M	1,437.50		\$1,437.50
49992	PORTABLE TOILET MONTHLY RENTAL 1/6-2/2 PARK MAINTENANCE & CAPITAL	MULTI-PURPOSE WASTE DISPOSAL/PORTALOO	302.00		\$1,306.00
	PARK MAINTENANCE & CAPITAL	MULTI-PURPOSE WASTE DISPOSAL/PORTALOO	302.00		
	WATER TREATMENT	MULTI-PURPOSE WASTE DISPOSAL/PORTALOO	122.00		
	PARK MAINTENANCE & CAPITAL	MULTI-PURPOSE WASTE DISPOSAL/PORTALOO	278.00		
	PARK MAINTENANCE & CAPITAL	MULTI-PURPOSE WASTE DISPOSAL/PORTALOO	302.00		
Total For: KG & T SEPTIC INC					\$2,743.50
Vendor: LIPPERT EXCAVATION & PIPELINE INC					
24389	EXCAVATOR RNTL FOR FIRE DEPT FIRE DEPARTMENT - SANDPOINT	RENTAL OF EQUIPMENT AND VEHICLES	1,370.00		\$1,370.00
Total For: LIPPERT EXCAVATION & PIPELINE INC					\$1,370.00
Vendor: MICHAEL D. TERRELL					
6193	TRAVERS TENNIS COURT REHAB DSGN SVCS THRU 2/15/25 PARK MAINTENANCE & CAPITAL	CAPITAL IMPROVEMENTS OTHER THAN BUILDING	3,287.90		\$3,287.90
Total For: MICHAEL D. TERRELL					\$3,287.90
Vendor: NAPA AUTO PARTS					
218988	SUPPLIES FOR FIELD PAINTER - ALL PARKS PARK MAINTENANCE & CAPITAL	VEHICLE & MACH SUPPLIES/PARTS	9.59		\$9.59
218976	WIPER BLADES FOR PARK TRUCKS - ALL PARKS PARK MAINTENANCE & CAPITAL	VEHICLE & MACH SUPPLIES/PARTS	64.35		\$64.35
219795	SC: HAND CLEANER & CAR FRESHENERS WASTEWATER COLLECTIONS	OPERATIONAL SUPPLIES/EQUIPMENT	18.55		\$15

Invoice Number	Invoice Description Department/Division	GL Account Description	Line Item Amount	Invd Item # 3.	t
Total For: NAPA AUTO PARTS				\$92.49	
Vendor: NORTH 40 OUTFITTERS					
047738/B	SC: T-BOLT CLAMP WASTEWATER COLLECTIONS	OPERATIONAL SUPPLIES/EQUIPMENT	11.99		\$11.99
047744/B	SC: T-BOLT CLAMP WASTEWATER COLLECTIONS	OPERATIONAL SUPPLIES/EQUIPMENT	11.99		\$11.99
047702/B	ST: 36" PLOW BLADE GUIDES STREET MAINTENANCE DIVISION	VEHICLE & MACH SUPPLIES/PARTS	79.98		\$79.98
047627/B	WD: 20V GREASE GUN WATER DISTRIBUTION	TOOLS	229.99		\$229.99
047633/B	WWTP: BLOCK HEATER + SWIVEL ADAPT REFUND WASTEWATER TREATMENT	FACILITY SUPPLIES	(12.97)		\$(12.97)
047594/B	WWTP: CUTTING BOARD TO MAKE SHIMS WASTEWATER TREATMENT	OPERATIONAL SUPPLIES/EQUIPMENT	37.99		\$37.99
047619/B	WWTP: HEATER & CHARGING CABLE WASTEWATER TREATMENT	OPERATIONAL SUPPLIES/EQUIPMENT	50.98		\$50.98
047615/B	SHOP: BULK FASTENERS AND BRACES STREET MAINTENANCE DIVISION	VEHICLE & MACH SUPPLIES/PARTS	5.68		\$17.04
	WATER DISTRIBUTION	VEHICLE & MACH SUPPLIES/PARTS	5.68		
	WASTEWATER COLLECTIONS	VEHICLE & MACH SUPPLIES/PARTS	5.68		
047557/B	WTP: SCREWS FOR REPAIR AT LAKE PLANT WATER TREATMENT	FACILITY SUPPLIES	21.99		\$21.99
047475/B	SHOP SUPPLIES - MEMORIAL PARK MAINTENANCE & CAPITAL	OPERATIONAL SUPPLIES/EQUIPMENT	14.77		\$14.77
Total For: NORTH 40 OUTFITTERS				\$463.75	
Vendor: OXARC INC					
0032264531	WTP: SAND CREEK CHLORINE CYLINDER WATER TREATMENT	CHEMICAL SUPPLIES	3,855.70		\$7,756.15
	WATER TREATMENT	CHEMICAL SUPPLIES	44.75		
	WATER TREATMENT	CHEMICAL SUPPLIES	3,855.70		
Total For: OXARC INC				\$7,756.15	
Vendor: PAPE MACHINERY INC					
15901758	V BELT FOR JOHN DEERE - ROW PLOWING PARK MAINTENANCE & CAPITAL	OPERATIONAL SUPPLIES/EQUIPMENT	82.95		\$82.95
Total For: PAPE MACHINERY INC				\$82.95	
Vendor: PASSPORT LABS INC					

Invoice Number	Invoice Description Department/Division	GL Account Description	Line Item Amount	Invd	Item # 3.
INV-1050980	PARKING TICKET SOFTWARE SVCS JAN '25 POLICE DEPARTMENT	TECH SERVICES - PUBLIC SAFETY TICKETING	1,090.91		
Total For: PASSPORT LABS INC					\$1,090.91
Vendor: QUALITY CONTROL SERVICES INC					
INV12224055	WWTP: INSTRUMENT & EQUIP CALIBRATIONS WASTEWATER TREATMENT	TECH SERVICES - LABORATORY	1,055.00		
Total For: QUALITY CONTROL SERVICES INC					\$1,055.00
Vendor: QUICK TURN DESIGNS LLC					
2025-2	10 PORT RADIO BATTERIES, PROGRAM 2 IN-CAR RADIOS POLICE DEPARTMENT	OPERATIONAL SUPPLIES/EQUIPMENT	729.00		
Total For: QUICK TURN DESIGNS LLC					\$729.00
Vendor: RECTRAC LLC					
VS015662	PARKS & REC SOFTWARE 1.5 HRS SET UP/TRAINING RECREATION PROGRAMS	SOFTWARE/SAAS - REC 1/TEAMSIDELINE	15.35		
	PARK MAINTENANCE & CAPITAL	SOFTWARE/SAAS - REC 1/TEAMSIDELINE	60.21		
	PARK MAINTENANCE & CAPITAL	SOFTWARE/SAAS - REC 1/TEAMSIDELINE	22.86		
	PARK MAINTENANCE & CAPITAL	SOFTWARE/SAAS - REC 1/TEAMSIDELINE	6.84		
	CITY BEACH RV PARK	SOFTWARE/SAAS - REC 1/TEAMSIDELINE	22.50		
	JAMES E. RUSSELL SPORTS CENTER FACILITY	SOFTWARE/SAAS - REC 1/TEAMSIDELINE	59.74		
VS001138	TRAINING TIME NEW REC SOFTWARE RECREATION PROGRAMS	SOFTWARE/SAAS - REC 1/TEAMSIDELINE	194.51		
	PARK MAINTENANCE & CAPITAL	SOFTWARE/SAAS - REC 1/TEAMSIDELINE	762.61		
	PARK MAINTENANCE & CAPITAL	SOFTWARE/SAAS - REC 1/TEAMSIDELINE	289.52		
	PARK MAINTENANCE & CAPITAL	SOFTWARE/SAAS - REC 1/TEAMSIDELINE	86.69		
	CITY BEACH RV PARK	SOFTWARE/SAAS - REC 1/TEAMSIDELINE	285.00		
	JAMES E. RUSSELL SPORTS CENTER FACILITY	SOFTWARE/SAAS - REC 1/TEAMSIDELINE	756.67		
Total For: RECTRAC LLC					\$2,562.50
Vendor: SANDPOINT BUILDING SUPPLY					
2493235	MATERIALS FOR WORK BENCH - MEMORIAL PARK MAINTENANCE & CAPITAL	OPERATIONAL SUPPLIES/EQUIPMENT	80.77		
Total For: SANDPOINT BUILDING SUPPLY					\$80.77
Vendor: SANDPOINT MARINE & MOTORSPORTS					
96883	PLOW MOUNT PARK MAINTENANCE & CAPITAL	VEHICLE & MACH SUPPLIES/PARTS	178.44		
96916	PLOW MOUNT RETURNED - ALL PARKS				\$(17)

Invoice Number	Invoice Description Department/Division	GL Account Description	Line Item Amount	Invd	Item # 3.
	PARK MAINTENANCE & CAPITAL	VEHICLE & MACH SUPPLIES/PARTS	(178.44)		
Total For: SANDPOINT MARINE & MOTORSPORTS			\$0.00		

Vendor: SANDPOINT SUPER DRUG

29739/1	ST: PRIMER, RUSTSTOP, REFLECTIVE SPRAY -PLOW STREET MAINTENANCE DIVISION	VEHICLE & MACH SUPPLIES/PARTS	33.69		\$33.69
29743/1	SHOP: TRASH BAGS & BATHROOM SPRAY STREET MAINTENANCE DIVISION	FACILITY SUPPLIES	18.33		\$55.01
	WATER DISTRIBUTION	FACILITY SUPPLIES	18.34		
	WASTEWATER COLLECTIONS	FACILITY SUPPLIES	18.34		
29562/1	WD: EPOXY AND MINI-LIGHT WATER DISTRIBUTION	OPERATIONAL SUPPLIES/EQUIPMENT	9.88		\$9.88
Total For: SANDPOINT SUPER DRUG					\$98.58

Vendor: SANDPOINT URBAN RENEWAL AGENCY

02242025	JAN'25 TAX RECEIPTS COLLECTED UNCLASSIFIED	SANDPOINT URBAN RENEWAL AGENCY - DOWNTOW	55,634.82		\$67,319.86
	UNCLASSIFIED	SANDPOINT URBAN RENEWAL AGENCY - NORTH	11,685.04		
Total For: SANDPOINT URBAN RENEWAL AGENCY					\$67,319.86

Vendor: SOUTH FORK HARDWARE (PARKS)

397899	SUPPLIES FOR WORK BENCH - MEMORIAL PARK MAINTENANCE & CAPITAL	OPERATIONAL SUPPLIES/EQUIPMENT	41.73		\$41.73
397887	SUPPLIES TO SAND & STAIN BENCHES - TRAVERS PARK MAINTENANCE & CAPITAL	OPERATIONAL SUPPLIES/EQUIPMENT	48.74		\$48.74
397274	MASONARY BIT, PLSTC ANCHOR - BEACH PARK MAINTENANCE & CAPITAL	OPERATIONAL SUPPLIES/EQUIPMENT	13.24		\$13.24
397277	NUTS AND BOLTS - SPORTS COMPLEX PARK MAINTENANCE & CAPITAL	OPERATIONAL SUPPLIES/EQUIPMENT	4.20		\$4.20
397374	ELECTRICAL PLATES/GFCI RPLCMNTS- JEFF JONES RESTROOM PARK MAINTENANCE & CAPITAL	OPERATIONAL SUPPLIES/EQUIPMENT	60.62		\$60.62
396832	STAPLER, STAPLES, POCKET TORCH - MEMORIAL PARK MAINTENANCE & CAPITAL	TOOLS	11.99		\$25.77
	PARK MAINTENANCE & CAPITAL	OFFICE SUPPLIES/EQUIPMENT	13.78		
397071	ANTI TIP KIT, NUTS & BOLTS - C HALL ART INSTALLATION GOVERNMENT BUILDING & GROUNDS DIVISION	OPERATIONAL SUPPLIES/EQUIPMENT	19.78		\$19.78
397871	WOOD FINISH - TRAVERS BENCHES PARK MAINTENANCE & CAPITAL	OPERATIONAL SUPPLIES/EQUIPMENT	8.49		\$8.49
Total For: SOUTH FORK HARDWARE (PARKS)					\$218

Invoice Number	Invoice Description Department/Division	GL Account Description	Line Item Amount	Invd	Item # 3.
Vendor: SOUTH FORK HARDWARE (PUB WKS)					
398076	WWTP: CLOROX WIPES AND 2 POWER STRIPS WASTEWATER TREATMENT	CLEANING SUPPLIES	15.98		
	WASTEWATER TREATMENT	FACILITY SUPPLIES	73.98		
Total For: SOUTH FORK HARDWARE (PUB WKS)					\$89.96
Vendor: SPECIALTY AUTO GLASS					
I0081636	WD/SC: PICKUP 1500 WINDSHIELD REPAIR WATER DISTRIBUTION	SERVICES - AUTOMOTIVE - R&M	30.00		\$60.00
	WASTEWATER COLLECTIONS	SERVICES - AUTOMOTIVE - R&M	30.00		
Total For: SPECIALTY AUTO GLASS					\$60.00
Vendor: TRAFFIC SAFETY SUPPLY CO					
INV078197	PLANING NOTICING BARRICADES PLANNING DIVISION	OPERATIONAL SUPPLIES/EQUIPMENT	1,083.15		\$1,083.15
Total For: TRAFFIC SAFETY SUPPLY CO					\$1,083.15
Vendor: USA BLUE BOOK					
INV00624063	WWTP: DISINFECTING WIPES WASTEWATER TREATMENT	CLEANING SUPPLIES	7.49		\$7.49
INV00623579	WWTP: PH STORAGE/15' SAMPLERS WASTEWATER TREATMENT	LABORATORY SUPPLIES	641.21		\$641.21
INV00624911	WWTP: WATER TEMP RECORDING DEVICE WASTEWATER TREATMENT	LABORATORY SUPPLIES	94.95		\$94.95
Total For: USA BLUE BOOK					\$743.65
Vendor: WESTERN STATES EQUIPMENT CO					
IN003074125	BRUSH CLIPPER RNTL - BAY TRAIL PARK MAINTENANCE & CAPITAL	RENTAL OF EQUIPMENT AND VEHICLES	680.05		\$680.05
Total For: WESTERN STATES EQUIPMENT CO					\$680.05

City of Sandpoint Payroll Breakdown for February 2025
Employee Benefit Compensation Export
From 02/01/2025 - 02/28/2025

WAGES	MEDICAL	DENTAL	SUPPLEMENTAL	TAXES	RETIREMENT	Employer Total
Total Employer Amount	Total Employer Amount	Total Employer Amount	Total Employer Amount	Total Employer Amount	Total Employer Amount	
541,568.74	105,569.13	4,365.00	13,738.05	35,672.39	72,385.81	773,299.12

Payables Total: \$200,050.95
Payroll Total: \$773,299.12

Grand Total: \$973,350.07

Councilor Signature: _____ Date: _____

Councilor Name: JUSTIN DICK



AGENDA REPORT

City Council Meeting

TODAY'S DATE: February 25, 2025

MEETING DATE: March 5, 2025

TO: MAYOR AND CITY COUNCIL

FROM: Erik Bush, Project Manager

SUBJECT: Update on the Downtown Revitalization Phase 3 Project

BACKGROUND/ DESCRIPTION:

On December 5, 2012, City Council adopted the Downtown Streets Plan and Design Guide, envisioning Downtown Sandpoint as the “Hub of the Inland Northwest”—a vibrant and welcoming destination for dining, entertainment, shopping, art, and recreation, fostering a strong sense of community throughout the year. The effort to revitalize Downtown Sandpoint began in the early 2000s, with significant contributions from business owners, property owners, community members, consultants, and City representatives working collaboratively to plan, design, secure funding, and implement improvements.

On May 5, 2021, City Council adopted the Multimodal Transportation Plan (MTMP), which refined the concept for completing the third/final phase of the SURA-funded Downtown Revitalization Project. This phase involves a full reconstruction of First Avenue from Church Street to at least Lake Street, as well as short-term improvements identified in the MTMP at Bridge Street and First Avenue.

On November 15, 2023, City Council adopted an additional report recommending improvements to First Avenue to support new development. These improvements include specialty paving, planting beds, street trees, street furnishings, wayfinding, and signage. A new intersection configuration at Bridge Street and First Avenue is also planned to improve pedestrian safety and improve traffic flow. South of Bridge Street, the plan incorporates expanded sidewalks to accommodate a multi-use pathway and angled parking. The Report also envisions a traffic circle at First and Superior, under a phase 4 improvement.

Phases 1 and 2, completed between 2018 and 2021, improved Cedar Street (from Fifth Avenue to First Avenue) and First Avenue (from Cedar Street to Church Street). These improvements, funded by the Sandpoint Urban Renewal Agency (SURA), provided upgraded pedestrian sidewalk, improved stormwater management, and enhanced public spaces.

The City of Sandpoint is now set to commence the design phase for Phase 3 of the Downtown Revitalization project. This phase will align with the Downtown Streets Plan and Design Guide, the Multimodal Transportation Master Plan, and the Comprehensive Plan. The key objectives of this revitalization effort are to enhance downtown connectivity, improve multimodal infrastructure, and support economic growth.

Phase 3 will extend the improvements along First Avenue from Church Street to approximately Pine Street, including portions of Bridge Street. The project scope includes:

- Wider sidewalks to improve pedestrian accessibility.
- Street furniture and landscaping to enhance public spaces and aesthetics.
- Parking upgrades to optimize downtown usability.

- Bioretention cells for stormwater treatment before discharge into Sand Creek.
- Public art installations to enrich Sandpoint's cultural environment.

Funding for Phase 3 will continue through the Sandpoint Urban Renewal Agency (SURA).

The next step in the process is to issue a Request for Proposals (RFP) to engage a design consultant. Following this, a request for approval of a Professional Services Agreement for design services will be presented to the City Council. The selected consultant will reference multiple guiding documents to ensure consistency with prior phases, including the Downtown Streets Plan and Design Guide (streetscape standards and planning goals), Multimodal Transportation Plan (mobility and accessibility improvements), and the Downtown Waterfront Design Competition Stage 3 Design Report (stormwater management and lighting).

The design process will incorporate "lessons learned" from Phases 1 and 2, conduct site survey, conduct a traffic study, and construction document development to create a seamless streetscape along First Avenue from Cedar Street to the south.

A public engagement plan will be presented to the Council for consideration and approval. This plan aims to promote transparency, gather community input, and encourage stakeholder participation throughout the design process. Engagement strategies will include Public Meetings & Open Houses, Stakeholder Workshops, Online Surveys & Feedback Forms, Project Website & Social Media Updates, Press Releases & Newsletters, and Advisory Committee Briefings.

STAFF RECOMMENDATION: No Action Requested

ACTION: No Action Required

WILL THERE BE ANY FINANCIAL IMPACT? YES HAS THIS ITEM BEEN BUDGETED? YES;
within FY25 budget.

ATTACHMENTS:

1. Concept Comparison
2. Downtown Streets Plan and Design Guide – First and Cedar Concept
3. Multimodal Transportation Master Plan – First and Bridge Concepts
4. Downtown Waterfront Design Competition – First Ave Concept
5. Downtown Streets Plan and Design Guide – First and Superior

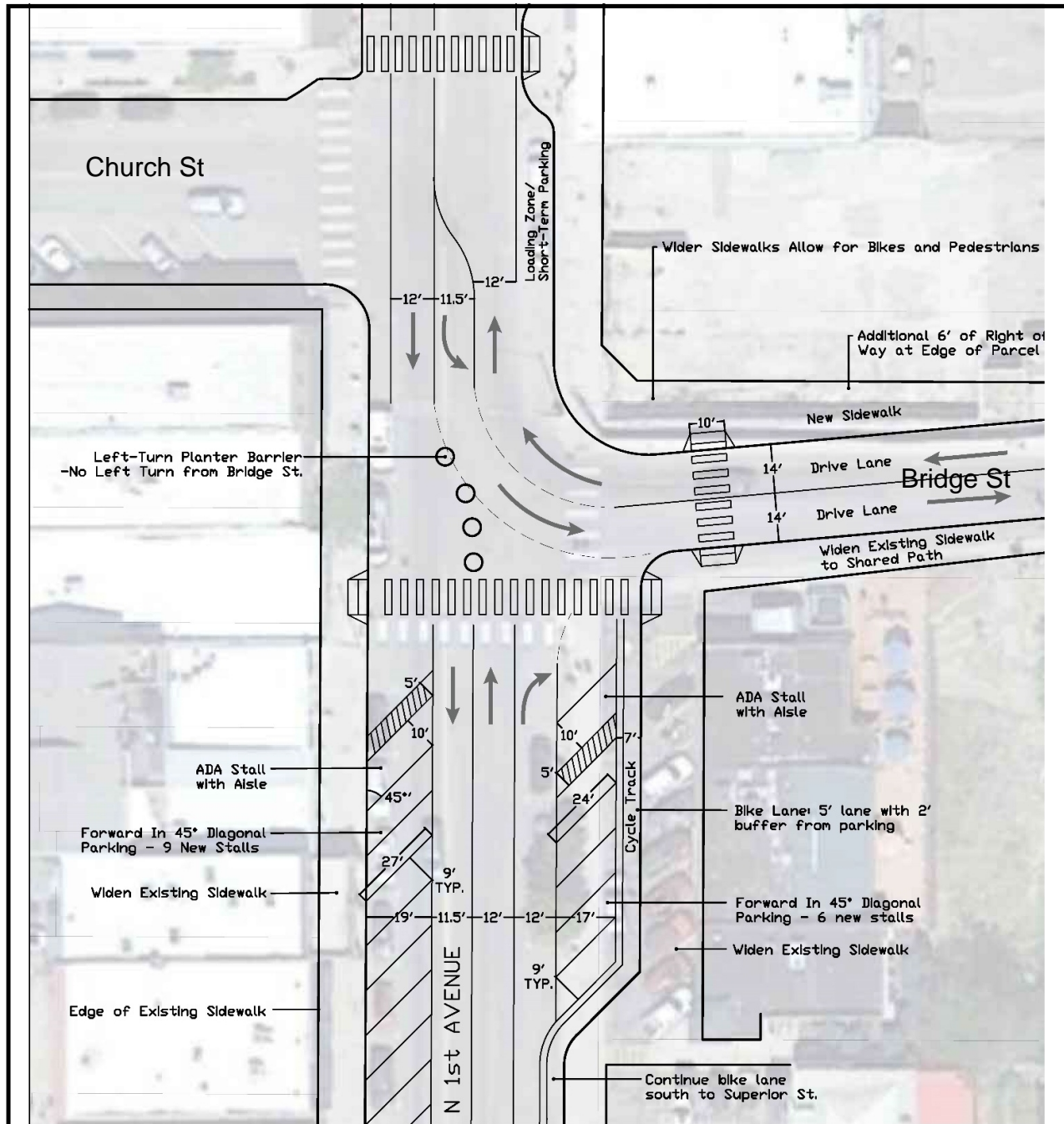
LINKS:

1. [Downtown Streets Plan and Design Guide](https://www.sandpointidaho.gov/media/3541) - https://www.sandpointidaho.gov/media/3541
2. [Multimodal Transportation Master Plan](https://www.sandpointidaho.gov/media/3491) - https://www.sandpointidaho.gov/media/3491
3. [Downtown Waterfront Design Competition Stage 3 Design Report](https://www.sandpointidaho.gov/media/3641) - https://www.sandpointidaho.gov/media/3641
4. [Cleargov Project Page](https://sandpoint-id.cleargov.com/projects/14340/downtown-revitalization-phase-3) - https://sandpoint-id.cleargov.com/projects/14340/downtown-revitalization-phase-3

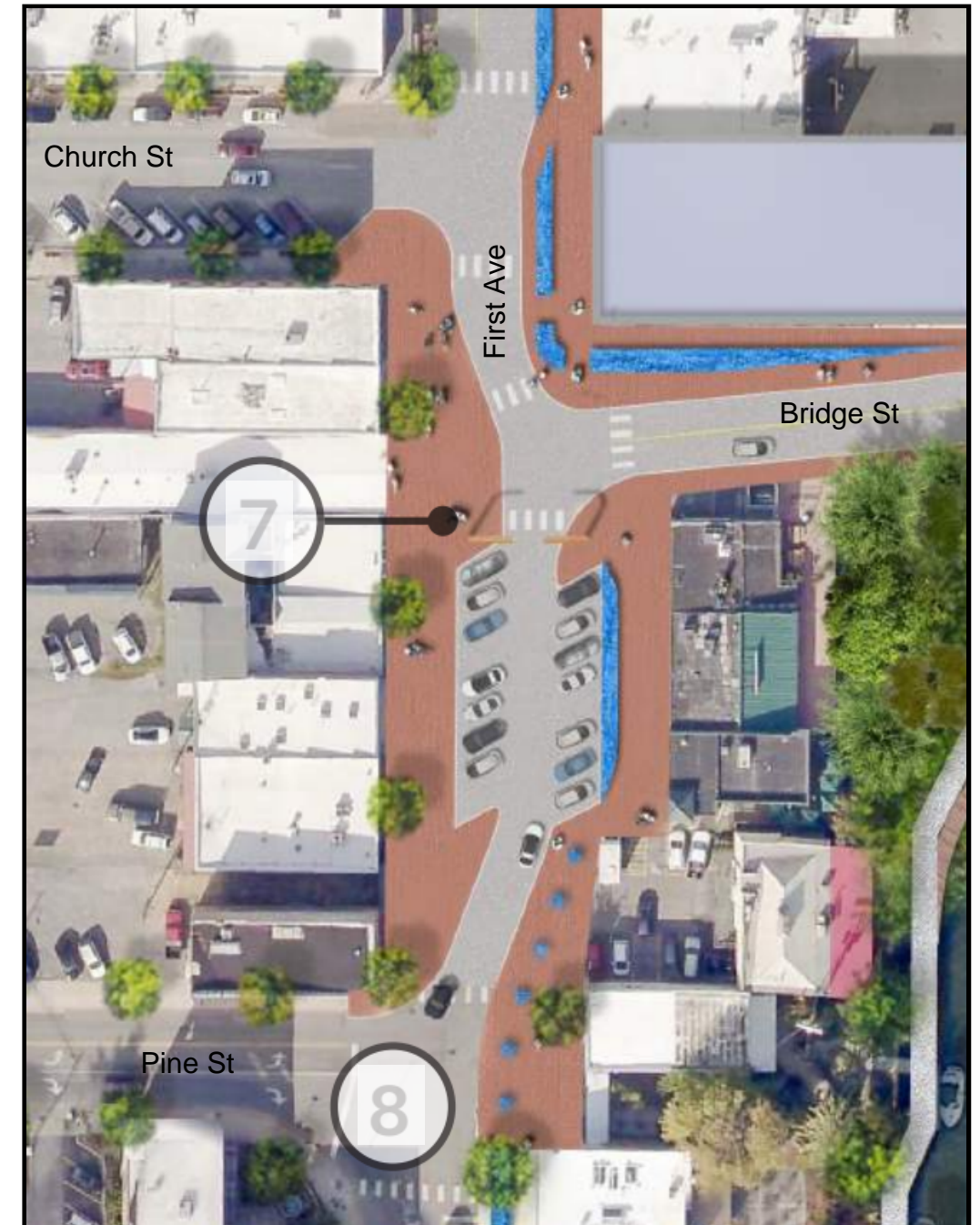
Concept Comparison

MTMP - Short Term Concept at Bridge/ First

Downtown Design Competition - Concept at Bridge/ First



- Improvements with Both Concepts:
- Traffic Study Required
 - Wider sidewalks
 - Street Trees
 - Stormwater Management
 - Street Lighting
 - Diagonal parking between Pine/ Bridge



- Intersections:
- Bridge/First:
 - Short term: 3 vehicular lanes; no left from Bridge St to First Ave
 - Long term: 2 vehicular lanes; no north/south bound through vehicular access
 - Pine/First: Traffic Signal Warranted in future
 - Superior/First: Traffic Signal Warranted in future
- Cyclist: Cycle track on east side of first

- Intersections:
- Bridge/First: 2 vehicular lanes; full access
 - Pine/First: Traffic Signal Warranted in future
 - Superior/First: Traffic Circle
- Cyclist: Multi-use pathway
- Other: First Avenue Gateway Concept; Blue Necklace

5. FIRST AND CEDAR STREETScape CONCEPT. DOWNTOWN'S FRONT PORCH.

An important component of the Downtown Streets project was to have a discussion with community members, business owners, property owners, and visitors about how First Avenue and Cedar Street should look, feel, and function once the streets are relinquished by ITD. First Avenue and Cedar Street are widely recognized as the streets that anchor the commercial heart of Downtown Sandpoint. They also have the most opportunity to further transform Downtown by becoming a preeminent pedestrian-oriented community destination and gathering place.

First Avenue and Cedar Street - along with the refocused Sand Creek shoreline - are part of Downtown Sandpoint's "front porch". It defines Sandpoint's curb appeal. It's the place people see when they pass through. It's where people gather and hang out. It's for people-watching and strolling and browsing store windows. It's the place for locals and visitors to come together without any good reason - a place just to be.

During the Downtown Streets public outreach process, some themes consistently came up in

conversations: **pedestrian-oriented, bicycle-friendly, vibrant, active, safe, artistic, green.**

First Avenue and Cedar Street are also places to do business and pursue dreams. Most of the businesses are locally-owned and have been battling a crippling recession for the last several years. Those that survived the 2008-2009 epoch are generally excited about the potential for change on First and Cedar but are worried that their fragile economic livelihood might be jeopardized in the face of too much change. While much of the business community is supportive of a vibrant and active street, they also expressed concerns about customer access, deliveries, and financial impacts on their property or business.

The objective of the Downtown Streets project was to determine a preferred street cross-section for First Avenue and Cedar Street and set a general design direction for the streetscape(s). Details about materials, street trees, landscaping, stormwater, loading zones, and other design components will be developed at a later date. Some initial ideas for those features are presented here to help guide that future process.



First Avenue - looking south (May 2012)

The preferred streetscape cross-section for First Avenue and Cedar Street attempts to balance the desire for a vibrant, pedestrian-oriented, bicycle-friendly streetscape with the perceived need for more downtown parking.

The preferred cross-section is a compromise solution that reorganizes the existing 80-foot public right-of-way to include wider sidewalks (16-feet versus the existing 12-feet), parallel parking on one side of the street, and 45-degree front-in angled parking on the opposite side of the street. This solution increases the on-street parking supply by over 50% and establishes a sidewalk width that supports healthy street trees, outdoor seating, lighting, site furniture, and a high level of pedestrian activity.

The location of the angled parking changes along the streets to provide the most parking for vehicles going in the predominant direction of travel and to maximize solar gain on the sidewalks next to parallel parking spaces. Parallel parking spaces can be easily converted into seasonal sidewalk extension areas.

On Cedar Street, the angled parking is on the south side of the street. On First Avenue, the angled parking is generally location on the east side of the street, but shifts in the long block face between Main and Cedar (See diagram on page 61). This shift is an attempt to balance the parking distribution and provide additional spaces for pedestrian amenities.

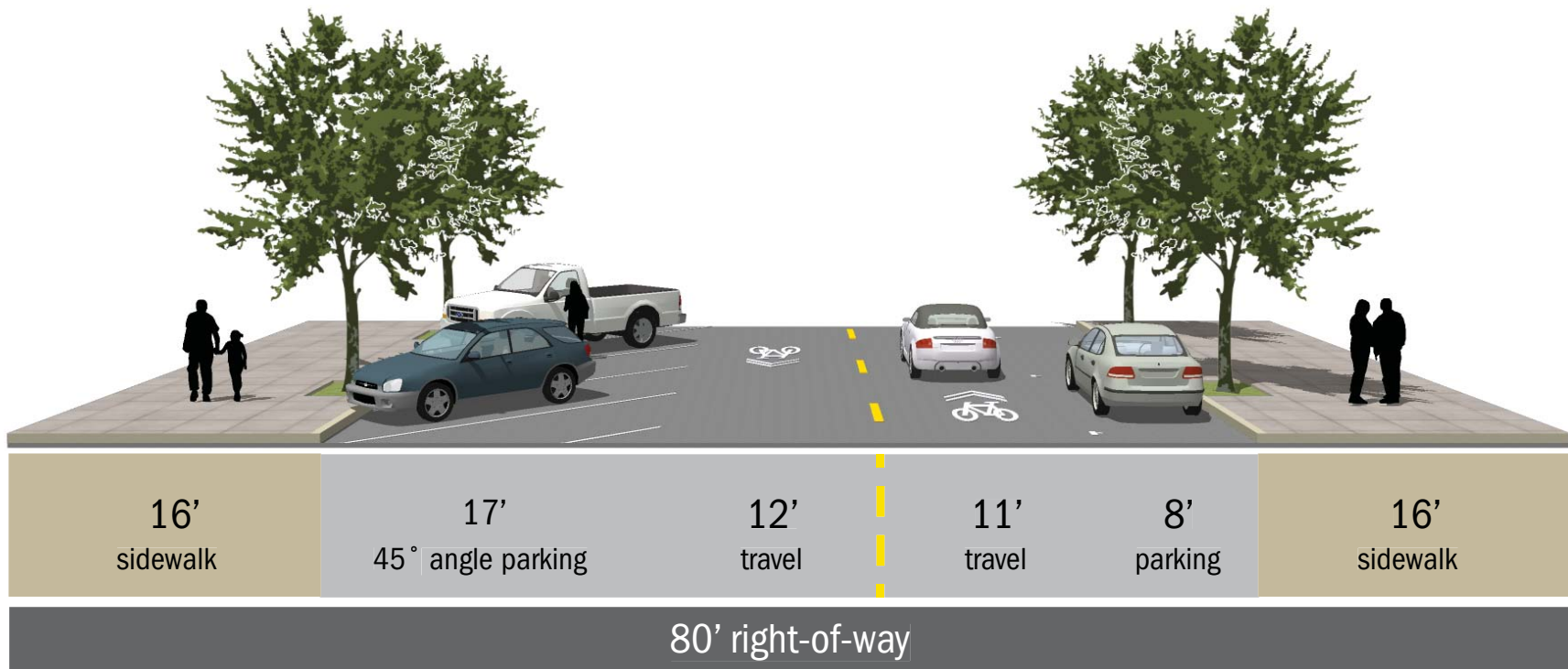
One of the benefits of this cross-section is that it's flexible. In the summer, when visitor populations and pedestrian activity is highest and there is more demand for sidewalk space for outdoor cafe seating and bicycle parking, select on-street parking spaces can be dedicated to these activities using temporary sidewalk extensions or temporary bike corrals (See Section 4 of this document for more information on those treatments). When there are fewer people out, the space can revert to parking or delivery areas.

Angled parking demands larger curb extensions at intersections, which provide opportunities for displaying public art, concentrating pedestrian and bicycle amenities, and/or centralizing stormwater facilities. These areas could also be used to

temporarily store snow in the winter when the space is not used as heavily.

Angled parking has a traffic calming effect when actively used. Motorists have to back into traffic slowly - sometimes blindly - which consequently slows traffic along the street. Bicycling on streets with angled parking is less predictable because of this issue. Back-in angled parking is a safer parking method for both motorists and bicyclists, but the community has expressed that it is too difficult to use and would prefer front-in angled parking.

Sharrows should be marked in the travel lanes to guide bicyclists away from the parking areas and to communicate that First Avenue and Cedar Street are shared, slow speed streets.



Preferred Streetscape Cross-Section for First Avenue and Cedar Street



First Avenue today



Artist rendering of First Avenue with the Preferred Streetscape

FIRST AND CEDAR STREETScape ELEMENTS

The vision for the First and Cedar streetscape should be to create a flexible, durable streetscape that invites pedestrian-oriented activities, supports existing businesses, encourages opportunities for new businesses, and facilitates bicycle use by keeping the design speed of the street to 20 miles per hour or less.

Angled parking should be sited along First and Cedar in the following manner (refer to diagram at right):

- First Avenue (Church-Main) - east side
- First Avenue (Main-Cedar) - east side + west side (chicane style)
- Cedar (First-Fourth) - south side

The following streetscape features *should be included* as part of the future First and Cedar streetscape project:

- two-way travel lanes
- sharrows
- 16-foot concrete sidewalks
- designated delivery zones

- street trees
- pedestrian-scale lighting (16-foot minimum)
- programmed curb extensions (areas for bicycle parking, stormwater facilities, seating, and/or public art)
- stormwater planters
- high-visibility crosswalks
- site furnishings (benches, waste and recycling cans, bicycle racks, etc.)
- pedestrian wayfinding signs and maps
- public art

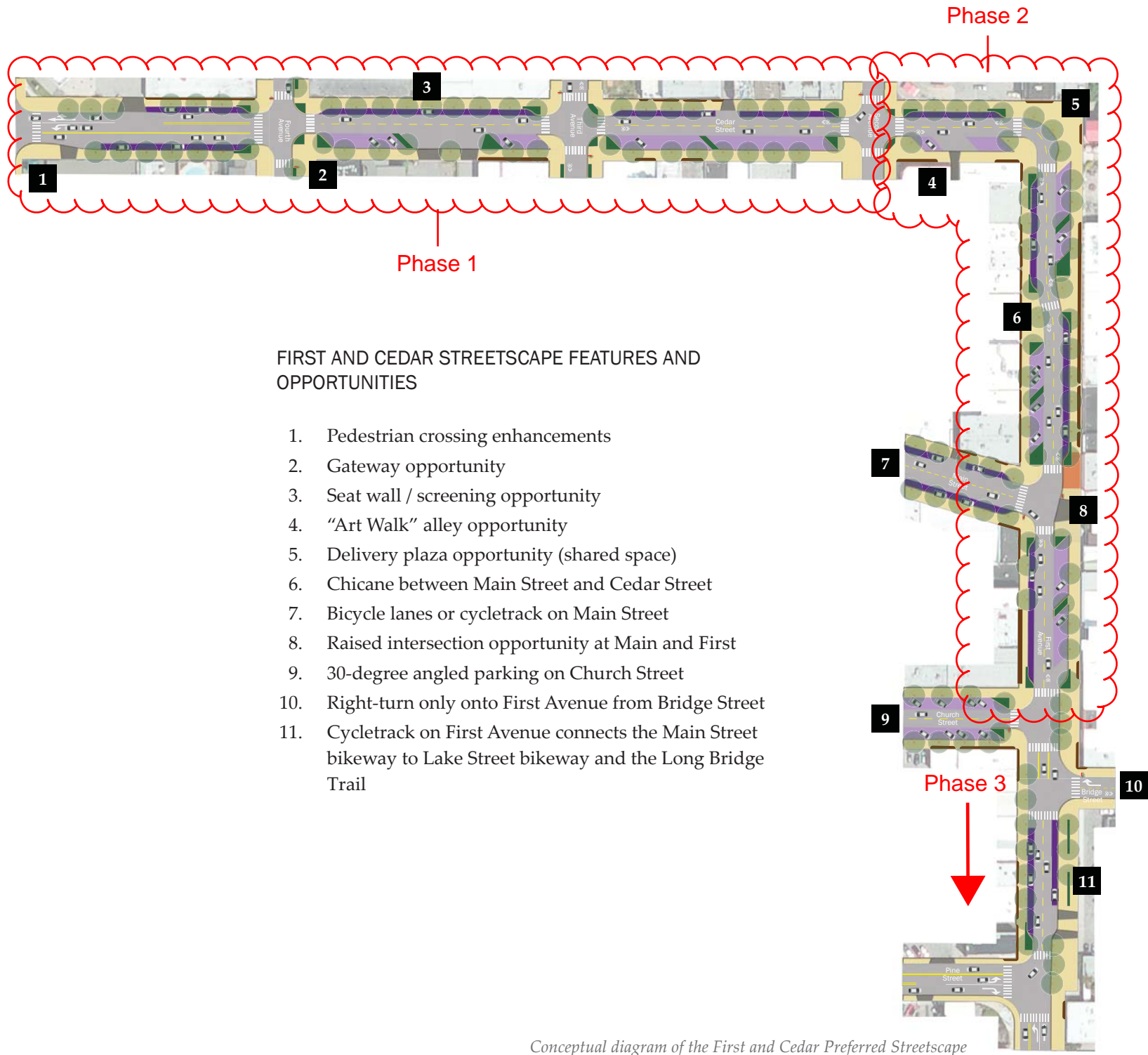
The following streetscape features *should be considered* for the future First and Cedar streetscape project:

- pavers
- raised intersection at First and Main
- undergrounding overhead utilities
- curbless sidewalks
- seasonal sidewalk extensions
- bike corrals or shelters
- heated sidewalks

SHORT-TERM OPPORTUNITIES

Once the US 2 “Curve” project is constructed and a Memorandum of Understanding (MOU) between the City and ITD is created, the City will have more control over how the streets in Downtown feel and function. However, a major streetscape investment along First and/or Cedar may not be feasible until funding is identified and secured. The following are some short-term solutions for the curb-to-curb width on First Avenue and Cedar Street and some “ready to go” streetscape amenities that the City and community members can invest in to make the streets in Downtown safer, more bicycle and pedestrian-friendly, and more attractive without precluding a more substantial infrastructure project in the future.

- Restripe First and Cedar to reflect the preferred cross-section, but with wider travel lanes (14-feet)
- Implement seasonal sidewalk extension program
- Add more seating, bicycle racks (features that can be removed and then returned after a construction project)
- Implement pedestrian wayfinding signage and map program



FIRST AND CEDAR STREETScape FEATURES AND OPPORTUNITIES

1. Pedestrian crossing enhancements
2. Gateway opportunity
3. Seat wall / screening opportunity
4. "Art Walk" alley opportunity
5. Delivery plaza opportunity (shared space)
6. Chicane between Main Street and Cedar Street
7. Bicycle lanes or cycletrack on Main Street
8. Raised intersection opportunity at Main and First
9. 30-degree angled parking on Church Street
10. Right-turn only onto First Avenue from Bridge Street
11. Cycletrack on First Avenue connects the Main Street bikeway to Lake Street bikeway and the Long Bridge Trail

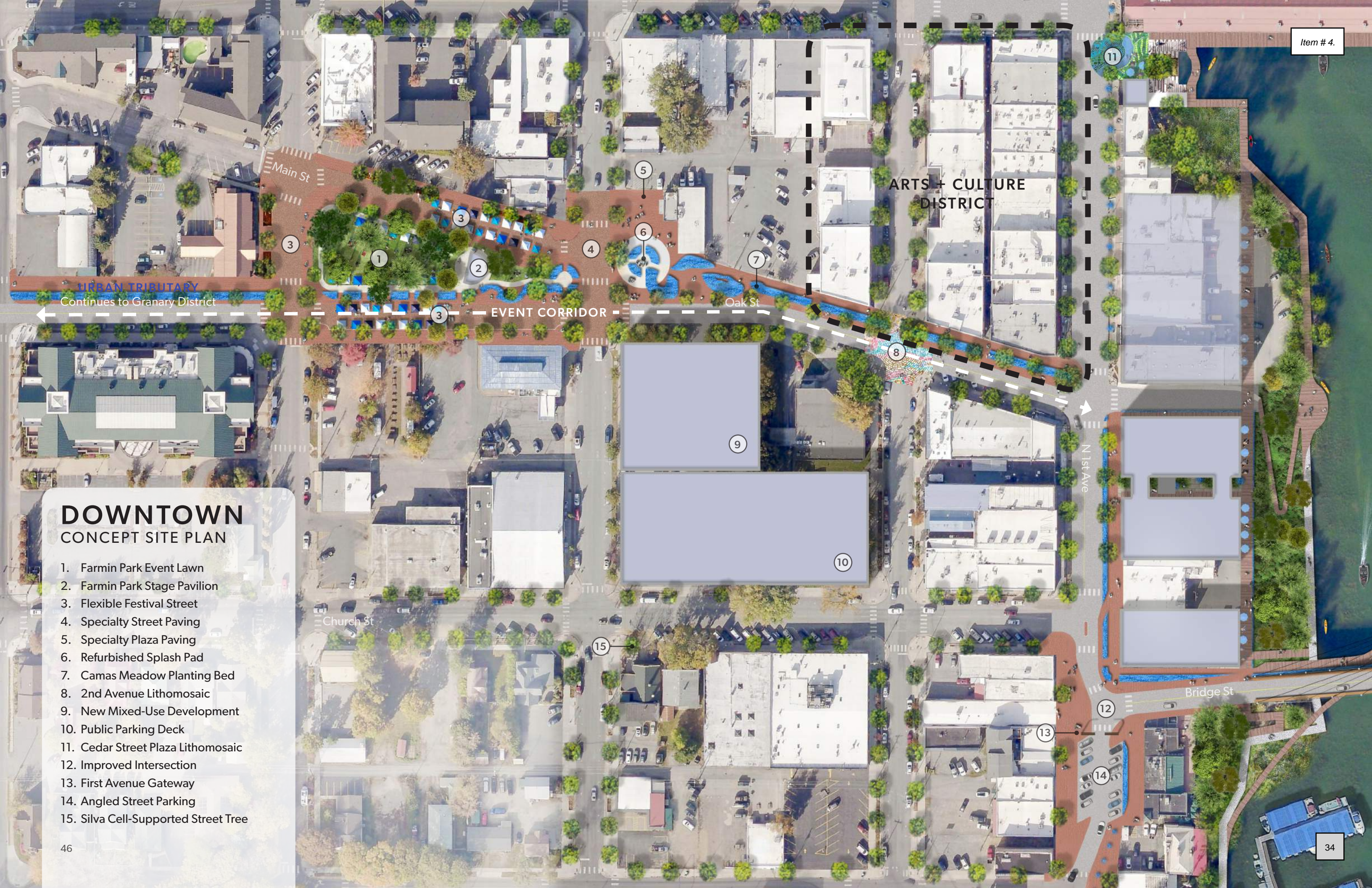
Conceptual diagram of the First and Cedar Preferred Streetscape

THE BLUE NECKLACE CONCEPT SITE PLAN

- 1. Farmin Park Expansion
- 2. 'Urban Tributary' Camas Path
- 3. New Mixed-Use Development
- 4. Public Parking Deck
- 5. Cedar Street Terrace
- 6. Farmin's Landing Enhancements
- 7. First Avenue Gateway
- 8. Improved Intersection
- 9. Bridge Concept
- 10. Water Trail
- 11. Carousel
- 12. Constructed Island
- 13. Underpass Enhancements
- 14. Bridge Street Hotel
- 15. Lions Emerging Artist Plaza
- 16. Non-motorized Boat Launch
- 17. Boat House
- 18. Nature Playscape

- 19. ADA-Accessible Water Entry Ramp
- 20. Boat Trailer Parking
- 21. Ice Ribbon/Roller Sports Course
- 22. Event Pavilion
- 23. Great Lawn
- 24. Swim Dock
- 25. Sand Volleyball Courts
- 26. Tennis and Pickle Ball Courts
- 27. Community Forest
- 28. Native Pollinator Meadow
- 29. Picnic Pavilions
- 30. Restored Point





ARTS + CULTURE DISTRICT

URBAN TRIBUTARY
Continues to Granary District

EVENT CORRIDOR

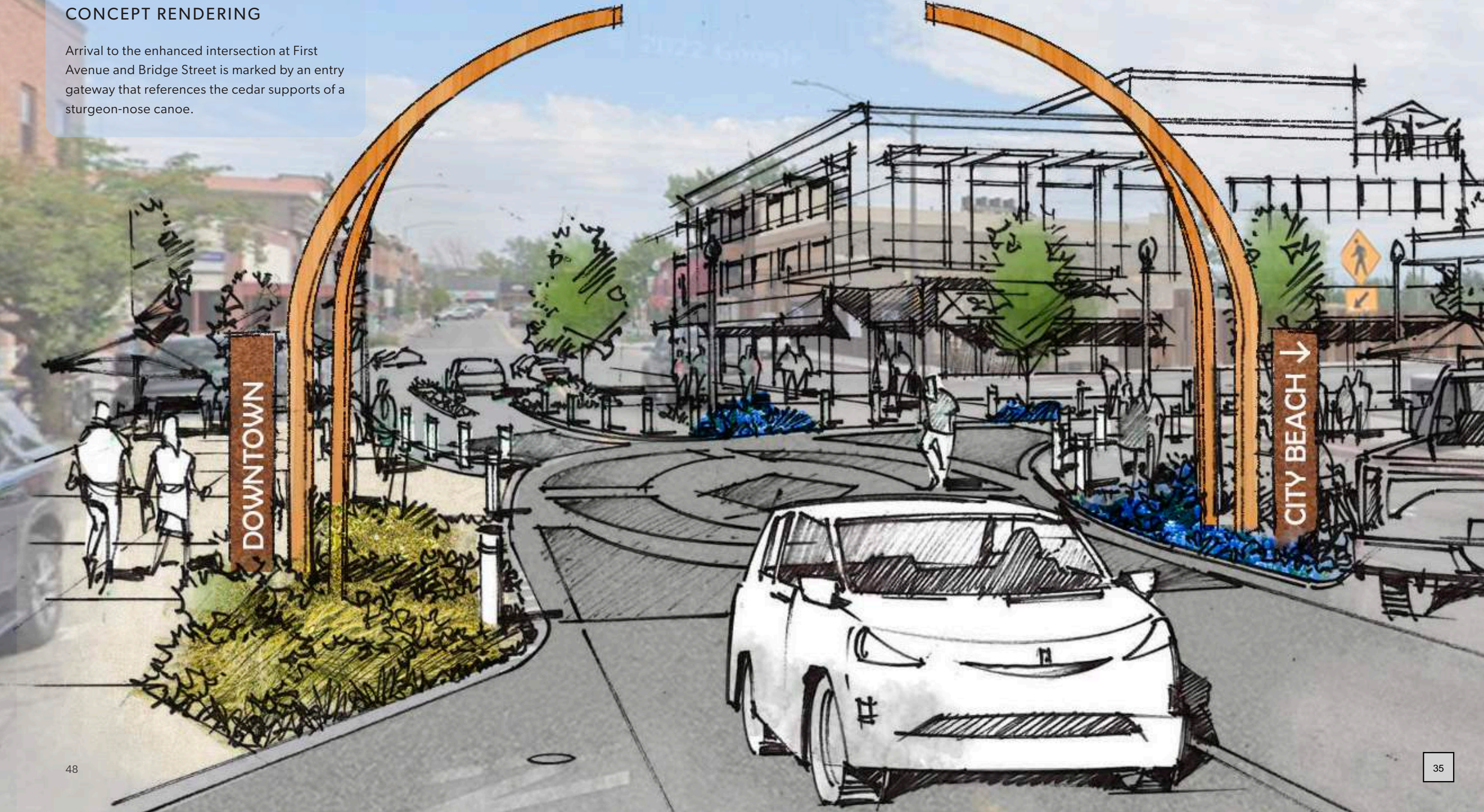
DOWNTOWN
CONCEPT SITE PLAN

- 1. Farmin Park Event Lawn
- 2. Farmin Park Stage Pavilion
- 3. Flexible Festival Street
- 4. Specialty Street Paving
- 5. Specialty Plaza Paving
- 6. Refurbished Splash Pad
- 7. Camas Meadow Planting Bed
- 8. 2nd Avenue Lithomosaic
- 9. New Mixed-Use Development
- 10. Public Parking Deck
- 11. Cedar Street Plaza Lithomosaic
- 12. Improved Intersection
- 13. First Avenue Gateway
- 14. Angled Street Parking
- 15. Silva Cell-Supported Street Tree

FIRST AVENUE GATEWAY

CONCEPT RENDERING

Arrival to the enhanced intersection at First Avenue and Bridge Street is marked by an entry gateway that references the cedar supports of a sturgeon-nose canoe.



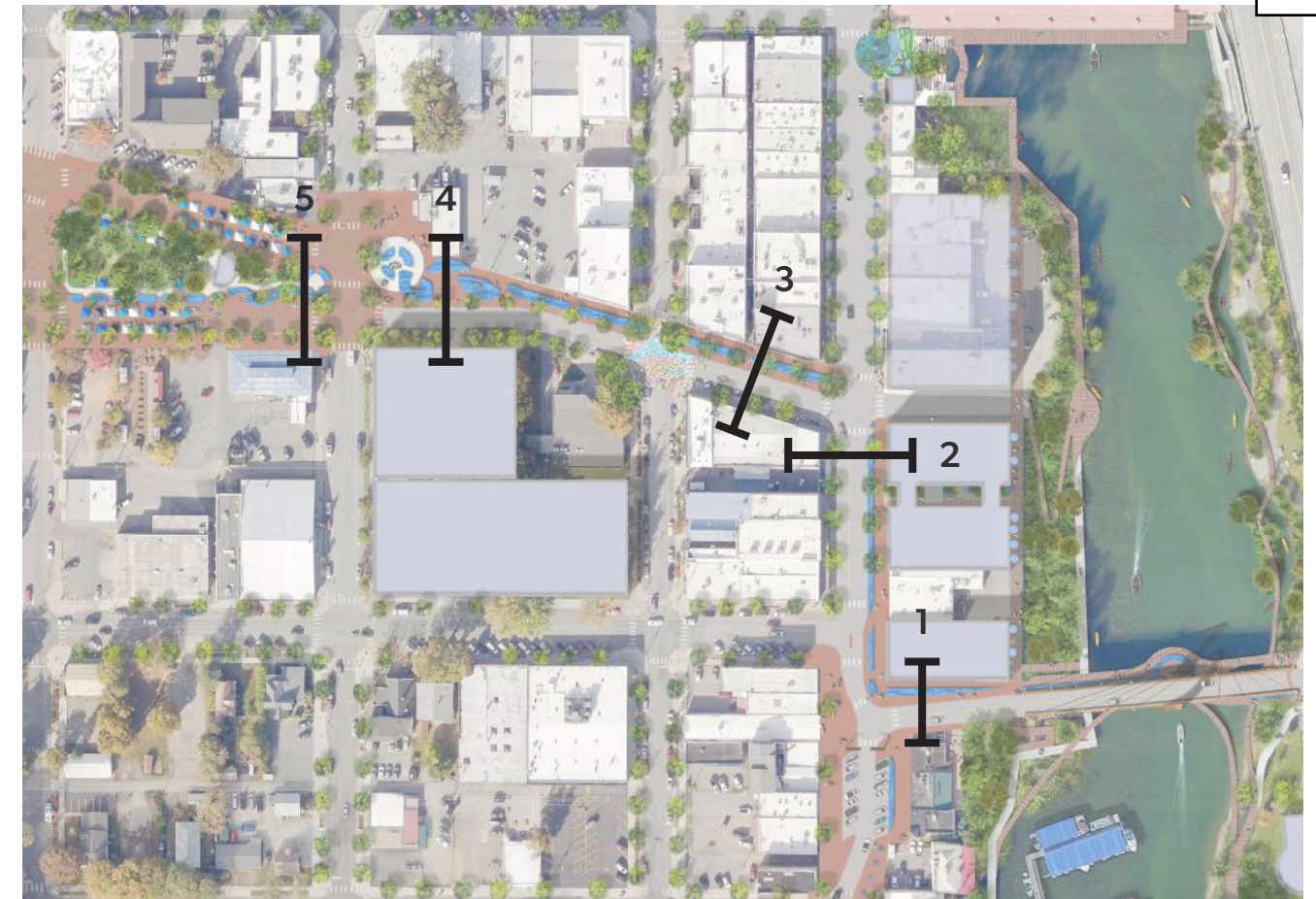


URBAN TRIBUTARY DOWNTOWN CONCEPT DESIGN

The Blue Necklace manifests itself in the form of an art- and nature-centered path that weaves through Sandpoint. This path becomes an urban tributary — a mechanism that harnesses Sandpoint’s creative energy, binding the Downtown together through an expression of nature, art, and light. This urban tributary is conceived as an experience for all ages and abilities, leading through town from the Granary District all the way to the point at City Beach.

The path is conceptualized as a wide, multi-use path for use by both pedestrians and casual cyclists. Lining the path is a carefully selected

palette of native plantings. We recommend working with the Kalispel Tribe’s native plant nursery to implement what would consist of a range of native camas prairie plantings to create a consistent and wild nature intervention stretching through town. Blooming a beautiful blue in the springtime with a multitude of wildflowers, the tributary will showcase a traditional food source vital to the indigenous peoples of this region, the camas. In spring, the camas could be harvested in a festival setting, building a stronger connection between the town and its history.



- 1. Bridge Street Section
- 2. First Avenue Section
- 3. Oak Street Section
- 4. Oak Street Section at Plaza
- 5. Oak Street Section at Farmin Park

On the following pages, representative street sections are provided to convey the design intent for the urban tributary as it weaves through Downtown. The sections are numbered and correspond to the map shown above. A representative section depicting the current existing condition is provided for each as a reference point.

Consistent across each of the sections is a multi-use pathway featuring specialty paving to differentiate it from a typical sidewalk. Plantings line the pathway and are accommodated in either at-grade planting beds or raised planters

depending on the context. At-grade planters provide stormwater retention and purification benefits, while raised planters can help create a stronger barrier between the pedestrian and vehicular zones while also providing opportunity for integrated seating and closer interaction with the plantings themselves, a desirable condition for camas plantings intended for harvest.

Specialty lighting, art features, and interpretive signage that tell the story of Sandpoint are integrated throughout the urban tributary.

2 FIRST AVENUE EXISTING SECTION

Property Line

Property Line

Existing Building

Existing Building



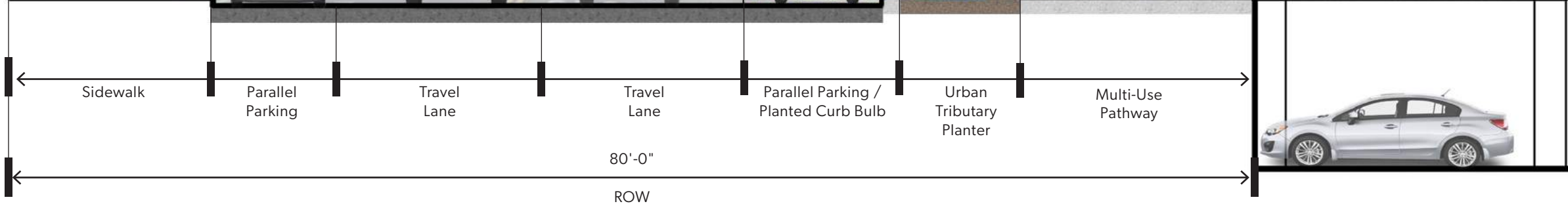
2 FIRST AVENUE CONCEPT SECTION

Property Line

Property Line

Existing Building

Mixed Use Development





SAND CREEK CONCEPT SITE PLAN

1. Cedar Street Terrace
2. Mixed-Use Development with Creek Frontage
3. Elevated Public Walkway
4. Restored Riparian Habitat
5. Refurbished Farmin's Landing
6. Constructed Island
7. Constructed Play Channel
8. Pedestrian Crossing
9. Grade-Separated Vehicular Crossing
10. Constructed Wetland
11. Lake Street Pedestrian Improvements
12. Cyclist and Pedestrian Bridge
13. Boardwalk Connection to City Beach
14. Carousel
15. Non-Motorized Watercraft Launch
16. Enhanced Underpass



Item # 4.

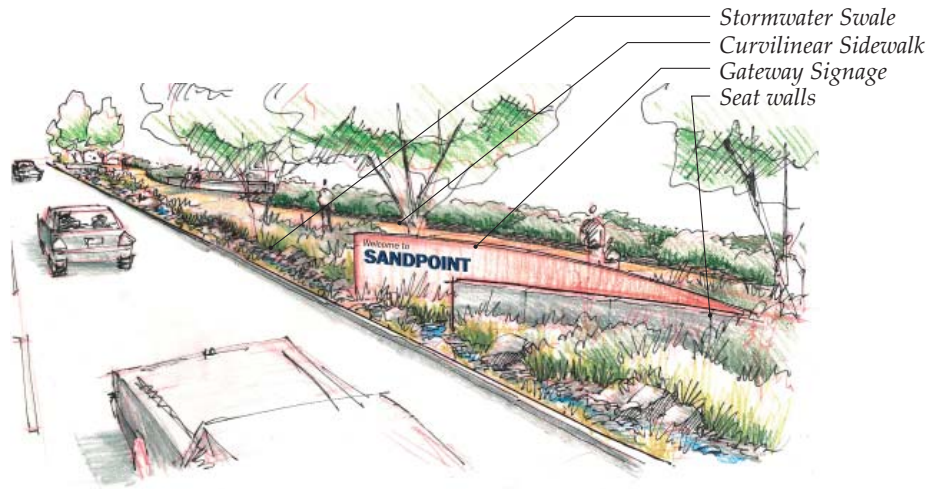
39



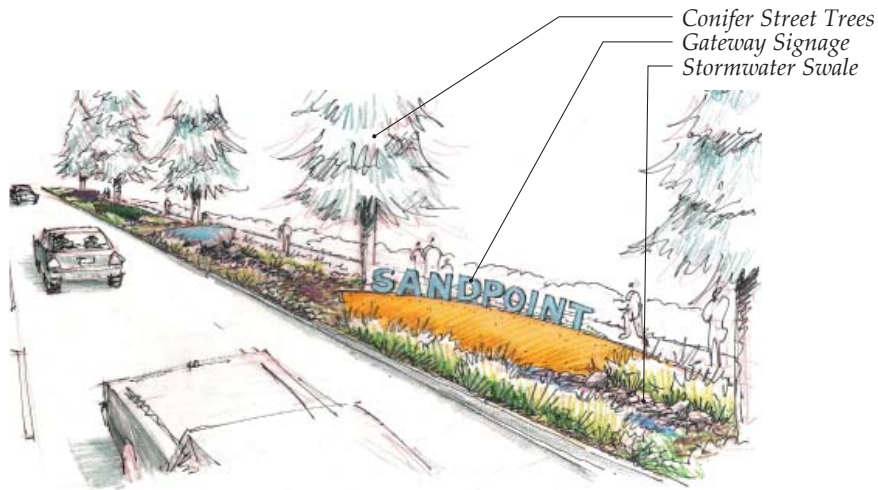
PHASE 1

2024 - 2028

- 1. Bridge St Enhancements
- 2. Phase 3 Revitalization First Ave Enhancements
- 3. Phase 4 Revitalization First Ave Enhancements
- 4. Farmin's Landing Enhancements Phase 1
- 5. Cedar Street Terrace
- 6. Sand Creek Boardwalk Extension
- 7. Constructed Wetland I
- 8. City Parking Lot Redevelopment
- 9. City Beach Enhancements Phase 1
- 10. Water Trail Implementation



“Natural Flow” welcome sign concept



“Sculptural Waves” welcome sign concept

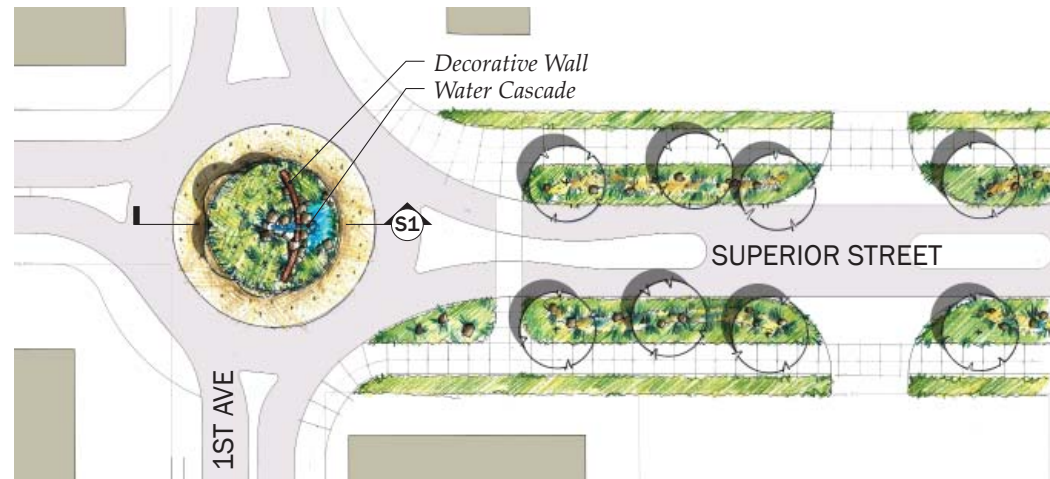
SUPERIOR STREET / FIRST AVENUE ROUNDABOUT

A roundabout located at the intersection of Superior Street and First Avenue is an alternative gateway to the two linear gateway concepts already described. The roundabout would create a gateway focal point and a wayfinding feature for the Superior Street gateway and Downtown Sandpoint. The roundabout would also clarify the intersection and make it easier to navigate, as both a motorist and a pedestrian. The concept of the roundabout was very well received by the community and is the preferred intersection treatment for Superior Street and First Avenue.

Each of the roundabout gateway concepts proposed translate the two linear gateway concepts previously described for Superior Street (‘Natural Flow’ and Sculptural Waves’) to fit to the circular form of the roundabout. If the roundabout option were adopted, then this plan proposes that the treatment along Superior Street be less intensive so that the focus is on the roundabout gateway feature.

The 'Natural Flow' roundabout concept proposes a simple decorative wall that slices across the circle that could be constructed of either board formed concrete or brick. Natural boulders of native stone would be placed in such a way that the wall appears to have been constructed around the boulders. A natural like water feature flows through the wall and into a pool. While it is recognized that a feature such as this presents certain funding and technical issues to overcome, it would be an attractive and iconic scene right at the entrance to downtown. Sandpoint entry lettering could be placed on the wall. This lettering should contrast with the wall material for optimal visibility. With attention given to the roundabout grading and engineering, stormwater could be directed into the roundabout and treated in a stormwater treatment facility.

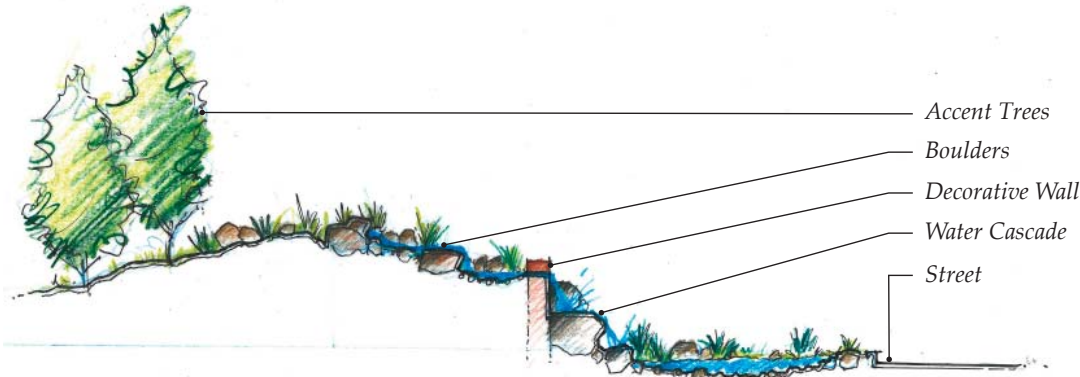
The 'Sculptural Waves' roundabout concept proposes incorporating the colorful steel panels in a radial pattern within a mounding landform. At the center of the roundabout would be a conifer that could serve as a living holiday tree for Sandpoint. Nobel Fir is a preferred tree species for such



"Natural Flow" roundabout concept



"Sculptural Waves" roundabout concept



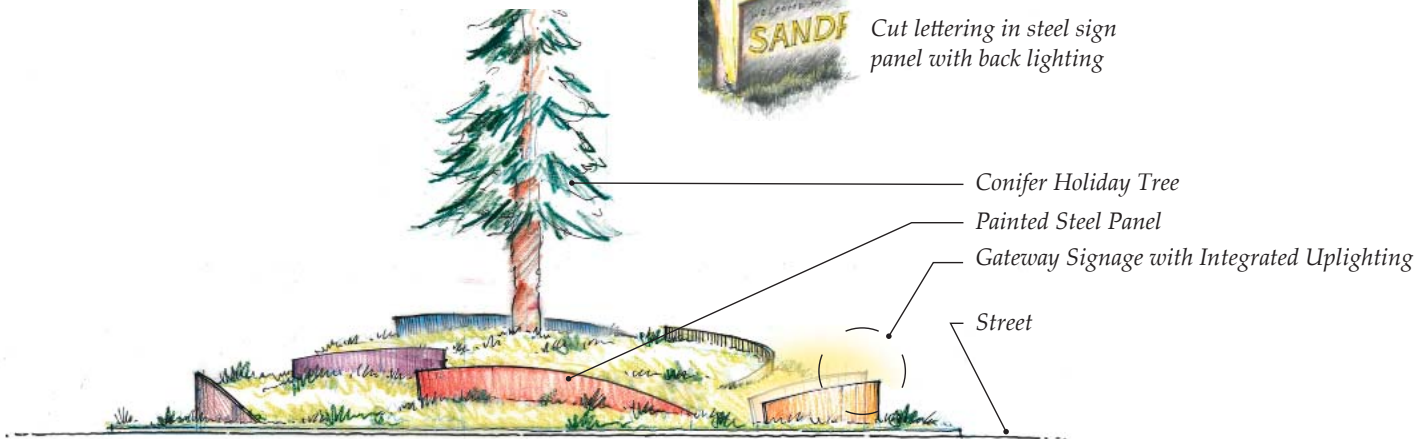
Section 1 (S1) - "Natural Flow" roundabout concept

applications. An entry sign panel would be created with a double steel panel with cut lettering into the front exposed panel with up-lighting between the panels to backlight through the lettering. The foreground panel should be a darker color and the background panel should be a lighter color or white. The panels would be spaced approximately 6 to 8 inches apart.



Gateway Signage Detail

Cut lettering in steel sign panel with back lighting



Section 2 (S2) - "Sculptural Waves" roundabout concept

"Neutral Flow" roundabout concept rendering

