



City of Sidney, MT
Park and Recreation Committee Meeting
August 28, 2023 5:15 PM
115 2nd Street SE | Sidney, MT 59270

The City Council meetings are open to the public attending in person, with masks encouraged when social distancing cannot be accomplished. If the public does not wish to participate in person, they are also invited to participate via a Zoom meeting. You can participate via phone:

Meeting ID: 713 080 5898 Passcode: 4332809

Call: 1-346-248-7799

1. New Business

[a.](#) Svarre Pool Dock

Proposal

Item a.

PROPOSAL NO.
SHEET NO.
DATE

PROPOSAL SUBMITTED TO:

WORK TO BE PERFORMED AT:

NAME <i>Interstate Engineering / Sidney Smith Team</i>
ADDRESS <i>Sidney MT</i>
PHONE NO.

ADDRESS <i>Nichenke Weleling</i>
DATE OF PLANS
ARCHITECT

We hereby propose to furnish the materials and perform the labor necessary for the completion of The Construction
Aluminum Dock/Kick Board TO go Across pool - these prices
are just a preliminary prices of materials - until A final
Design is Done - then we will Reassess prices of Alum - this
structure will be Built out of 6063 Alum for better marine use -
with a Marine Fiberglass Grating on top with Duragrid SPP
Polyester Resin Fine grit surface. - these prices are subject to
change with unstable prices -

Detailed Materials for Dock subject to change \$52,000⁰⁰
Labor subject to change depending on Build \$60,000⁰⁰
\$112,000⁰⁰

All prices are subject to change with the fluctuation of prices ever changing.

All material is guaranteed to be as specified, and the above work to be performed in accordance with the drawings and specifications submitted for above work and completed in a substantial workmanlike manner for the sum of _____ Dollars (\$ _____) with payments to be made as follows.

Any alteration or deviation from above specifications involving extra costs will be executed only upon written order, and will become an extra charge over and above the estimate. All agreements contingent upon strikes, accidents, or delays beyond our control.

Respectfully submitted _____
 Per _____
 Note — this proposal may be withdrawn by us if not accepted within _____ days.

ACCEPTANCE OF PROPOSAL

The above prices, specifications, and conditions are satisfactory and are hereby accepted. You are authorized to do the work as specified. Payments will be made as outlined above.

Signature _____
 Date _____ Signature _____

SIDNEY SWIMMING POOL IMPROVEMENTS

BASE BID - CONCRETE BULKHEAD					
ITEM No.	DESCRIPTION	UNITS	EST. QTY.	UNIT PRICE	EXTENDED PRICE
101	CONCRETE	CY	27	\$ 1,200.00	\$ 32,400.00
102	CONCRETE DECKING	CY	4	\$ 1,300.00	\$ 5,200.00
103	GUTTER MODIFICATION	LS	1	\$ 3,250.00	\$ 3,250.00
104	PAINTING ENTIRE POOL	LS	1	\$ 45,000.00	\$ 45,000.00
105	MISCELLANEOUS WORK	LS	1	\$ 8,500.00	\$ 8,500.00
106	BOND/MOBILIZATION	LS	1	\$ 7,500.00	\$ 7,500.00

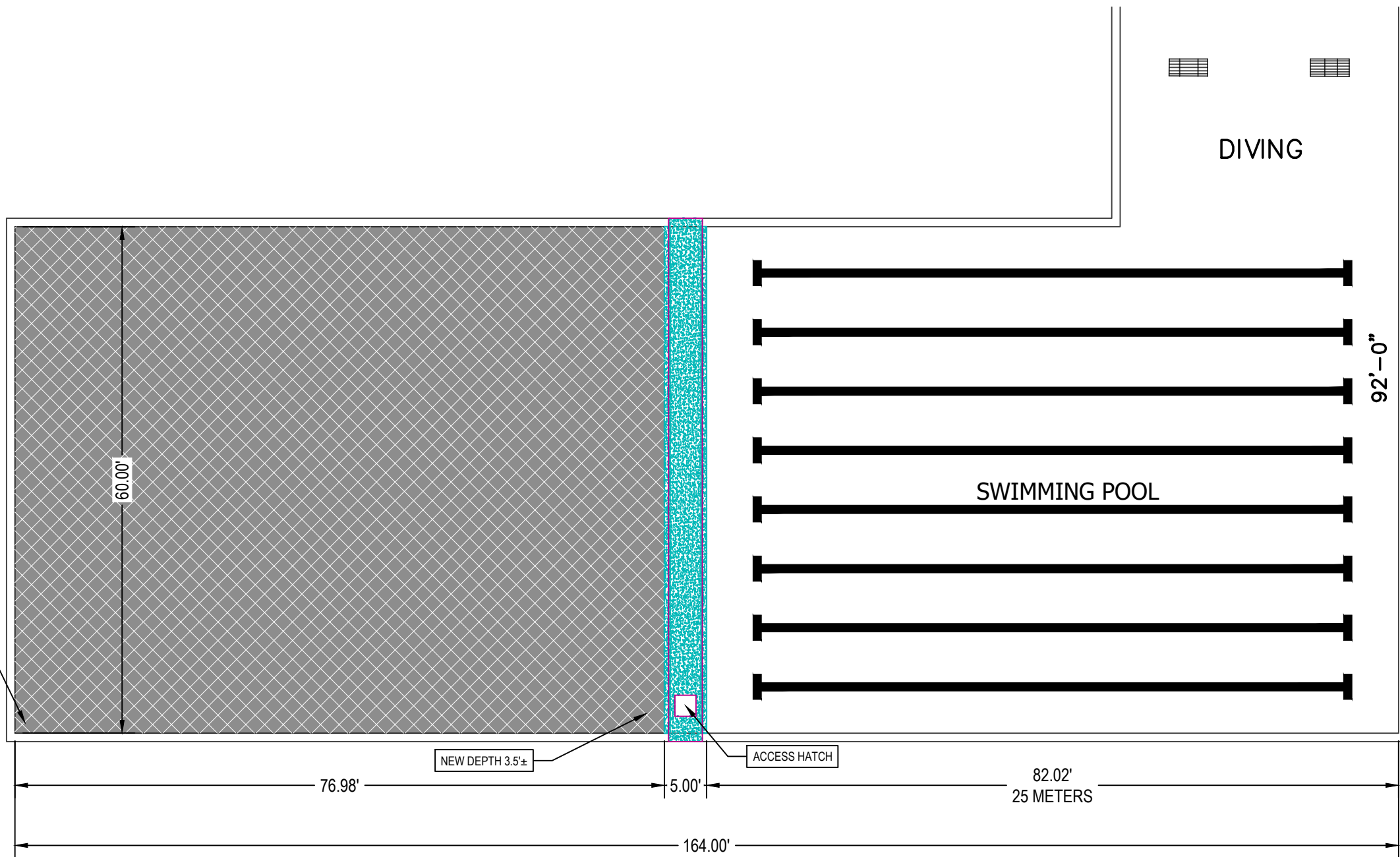
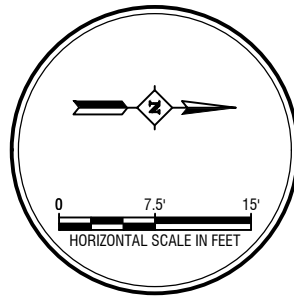
BASE BID TOTAL \$ \$ 101,850.00

ALTERNATIVE I- RAISE SOUTH SIDE OF POOL 1FT					
ITEM No.	DESCRIPTION	UNITS	EST. QTY.	UNIT PRICE	EXTENDED PRICE
201	CONCRETE	CY	172	\$ 350.00	\$ 60,200.00
202	MISCELLANEOUS WORK	LS	1	\$ 2,500.00	\$ 2,500.00
203	BOND/MOBILIZATION	LS	1	\$ 2,500.00	\$ 2,500.00

ALTERNATIVE I TOTAL \$ \$ 65,200.00

ALTERNATIVE II- T-STYLE GRATING					
ITEM No.	DESCRIPTION	UNITS	EST. QTY.	UNIT PRICE	EXTENDED PRICE
301	CONCRETE DECKING DELETE	CY	-4	\$ 1,300.00	\$ (5,200.00)
302	GALVANIZED STEEL GRATING SUPPORT	LS	1	\$ 1,300.00	\$ 1,300.00
303	T-STYLE GRATING	SF	246	\$ 55.00	\$ 13,530.00

ALTERNATIVE II TOTAL \$



RAISE SOUTH
SIDE OF POOL
BY 1'
NEW DEPTH 2.5'

NEW DEPTH 3.5'±

ACCESS HATCH

92'-0"

SWIMMING POOL

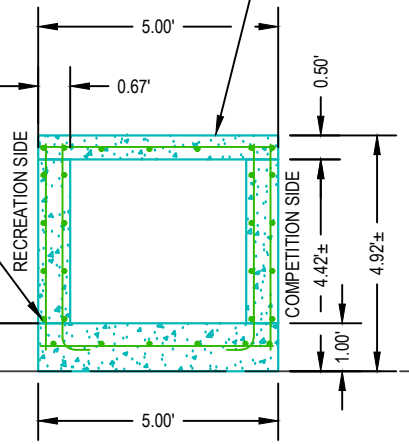
DIVING

STEEL PAN W/ CONCRETE DECK

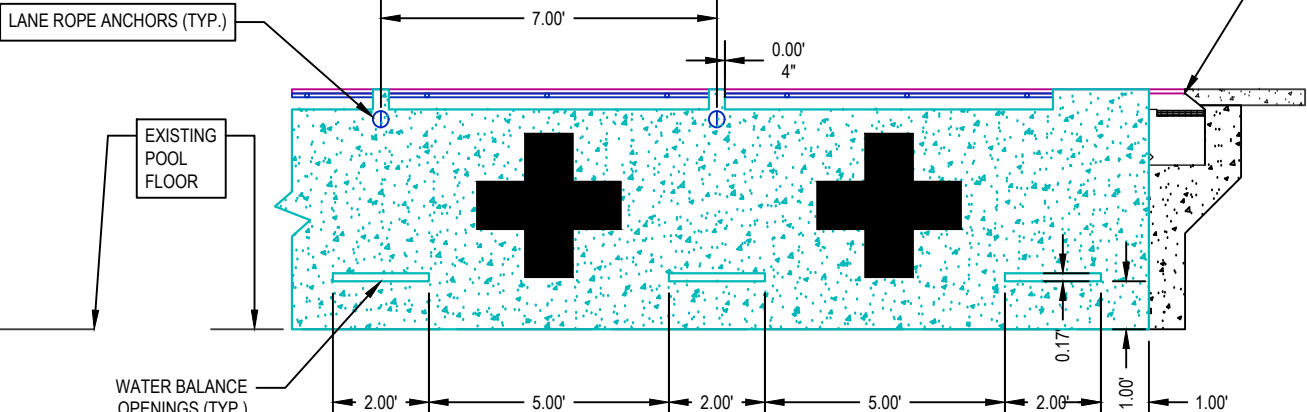
INSTALL STAINLESS STEEL ANGLE FOR GRATING SUPPORT

REINFORCE CONCRETE
NO. 5 @ 12" O.C. EACH WAY

PROPOSED RAISED
FINISHED FLOOR ELEVATION



A
C-1 BULKHEAD CROSS SECTION
Scale: 1" = 4'

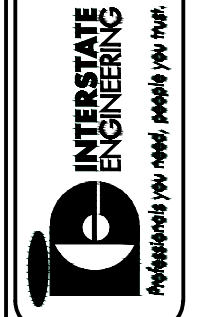


B
C-1 BULKHEAD FRONT VIEW
Scale: 1" = 4'

Item a.			
Rev No.	Date	By	Description

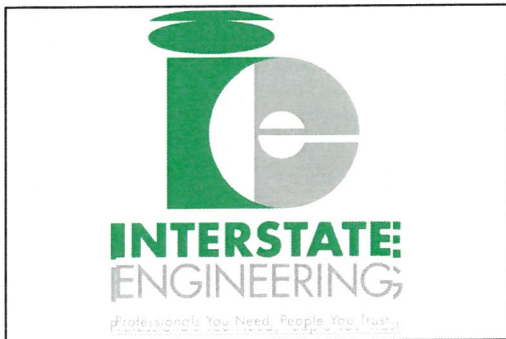
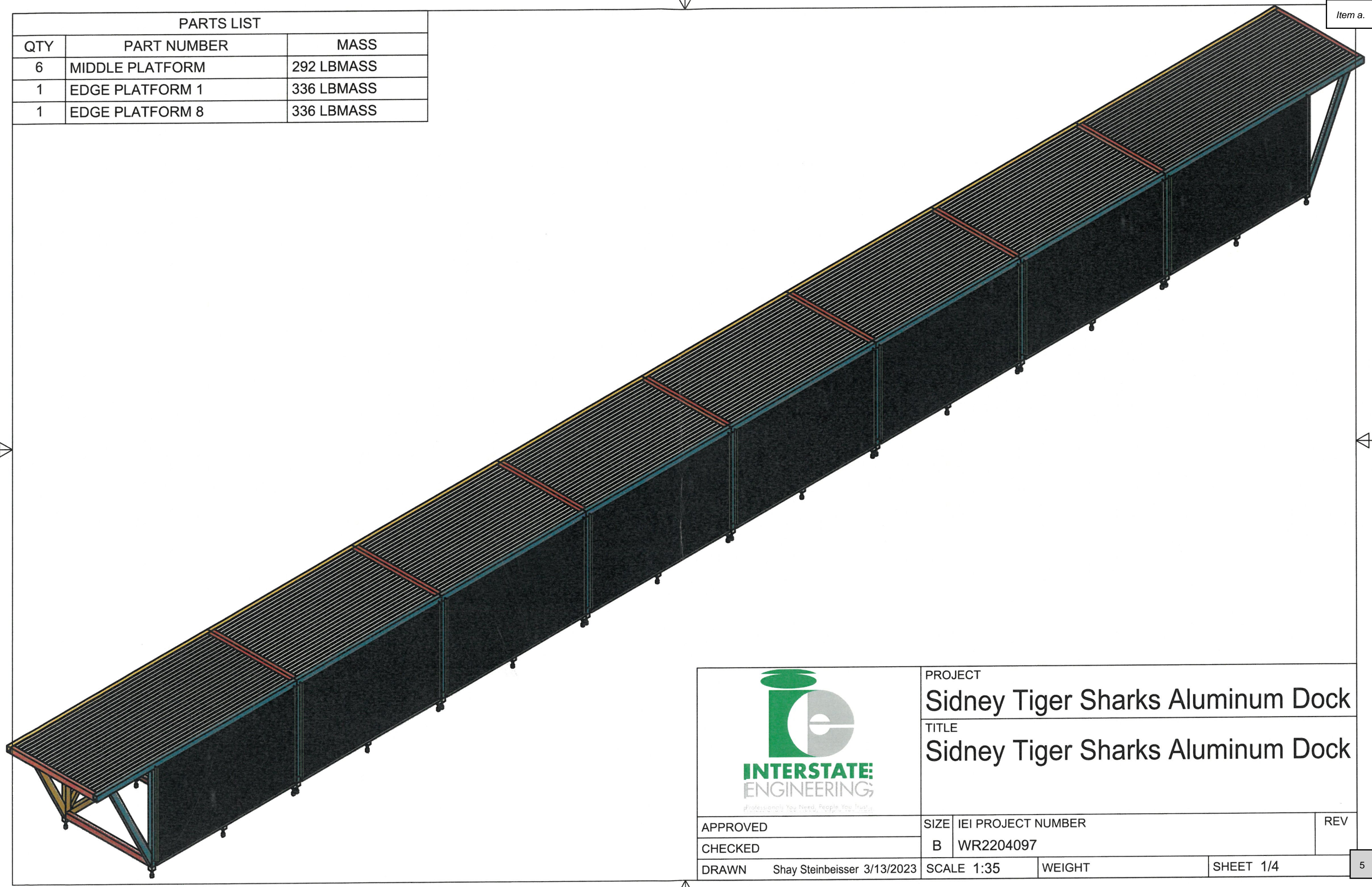
SIDNEY SWIMMING POOL BULKHEAD OPTIONS	
CITY OF SIDNEY SIDNEY, MT	
CONCRETE BULKHEAD	
Drawn By: SRS	Checked By: _____
Surveyed By: _____	Designed By: _____
Project No: WR22-06-108	Date: 05/17/2023

Interstate Engineering
2177 Lincoln Ave SE
PO Box 648
Sidney, MT 59270
(406) 433.5617
www.interstateeng.com



SECTION	C
1	
SHEET NO.	4

PARTS LIST		
QTY	PART NUMBER	MASS
6	MIDDLE PLATFORM	292 LBMASS
1	EDGE PLATFORM 1	336 LBMASS
1	EDGE PLATFORM 8	336 LBMASS



PROJECT
Sidney Tiger Sharks Aluminum Dock

TITLE
Sidney Tiger Sharks Aluminum Dock

APPROVED
 CHECKED

SIZE | IEI PROJECT NUMBER | REV
 B | WR2204097 |

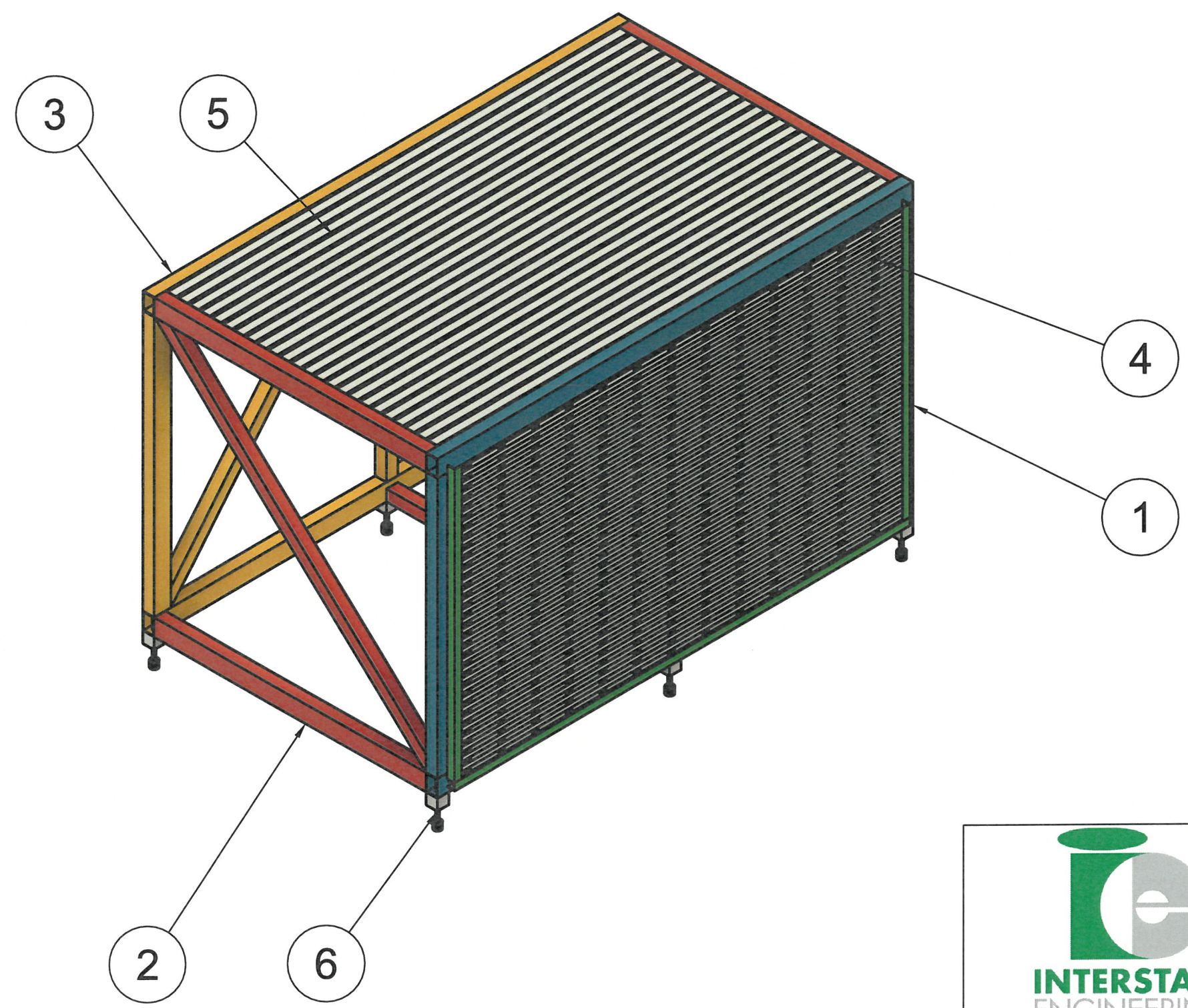
DRAWN Shay Steinbeisser 3/13/2023


SCALE 1:35 | WEIGHT | SHEET 1/4

Item a.

PARTS LIST

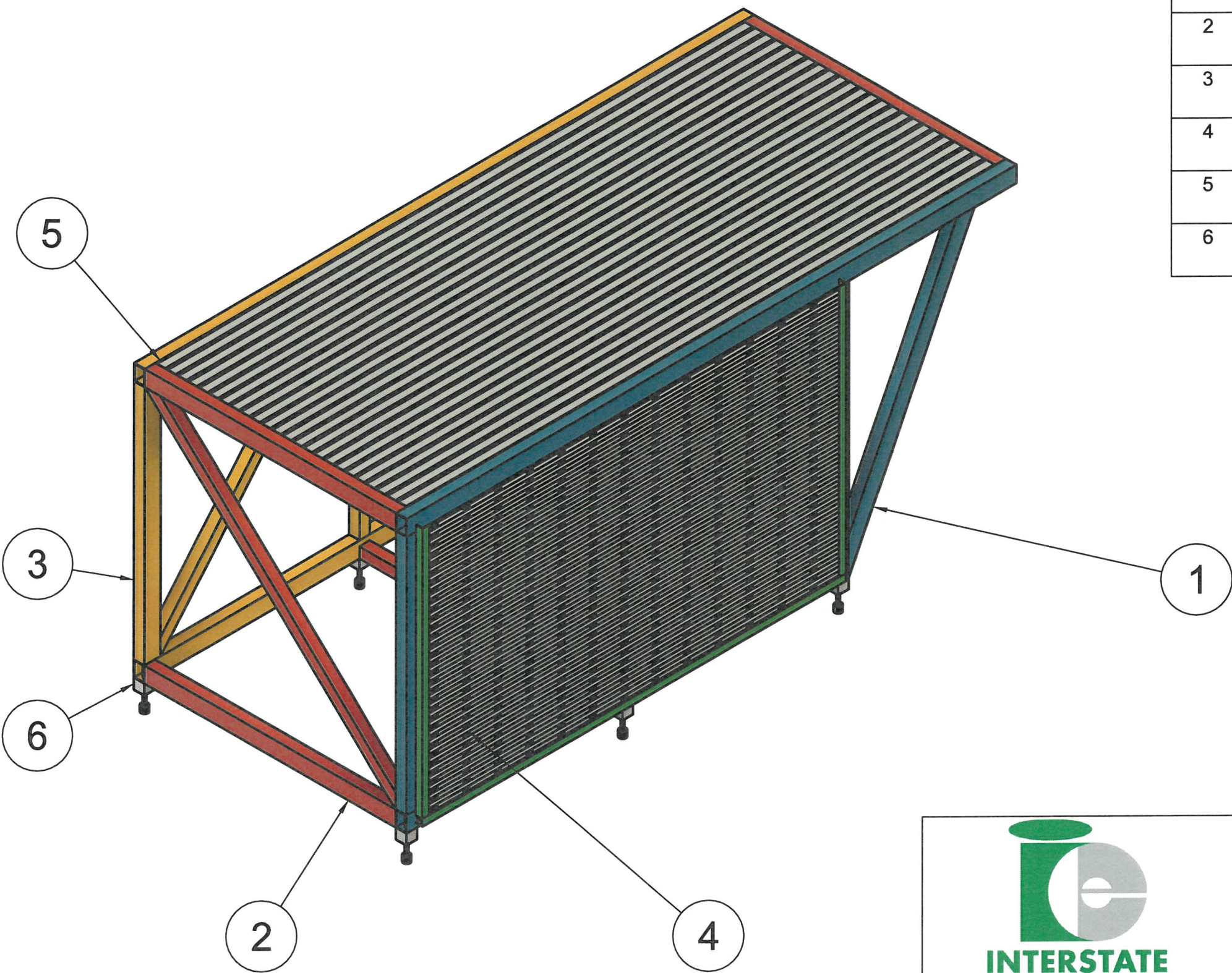
ITEM	QTY	PART NAME
1	1	FRONT FRAME_MIDDLE PLATFORM V11
2	1	SIDES/INNER FRAME_MIDDLE PLATFORM V8
3	1	BACK FRAME_MIDDLE PLATFORM V7
4	1	FIBERGLASS I-BAR GRATING V3
5	1	FIBERGLASS T-BAR GRATING V8
6	6	FEET ASSEMBLY V5

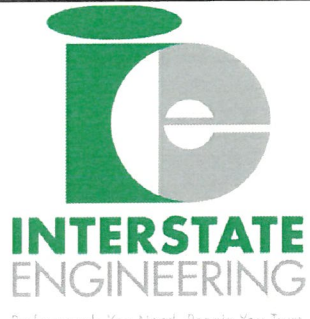


 INTERSTATE ENGINEERING <small>Professionals You Need. People You Trust.</small>	PROJECT		Sidney Tiger Sharks Aluminum Dock TITLE Middle Platform (x6)
	APPROVED	SIZE	
CHECKED	B	WR2204097	
DRAWN Shay Steinbeisser 3/13/2023	SCALE 1:16	WEIGHT	SHEET 2/4

Item a.

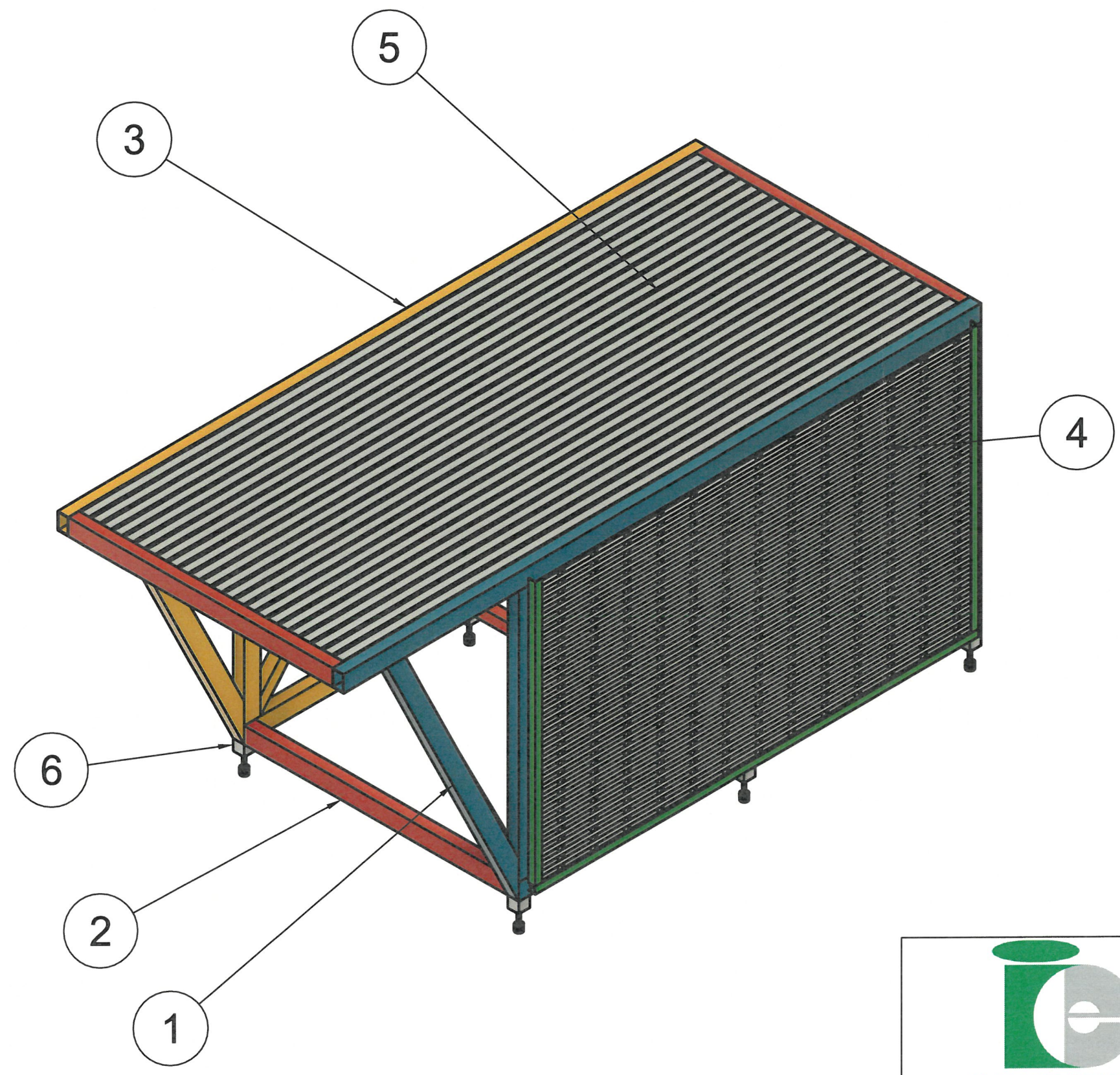
PARTS LIST		
ITEM	QTY	PART NAME
1	1	FRONT FRAME_EDGE PLATFORM 1
2	1	SIDES/INNER FRAME_MIDDLE PLATFORM V8
3	1	BACK FRAME_EDGE PLATFORM
4	1	FIBERGLASS I-BAR GRATING V3
5	1	FIBERGLASS T-BAR GRATING V2
6	6	FEET ASSEMBLY V5




 INTERSTATE ENGINEERING <small>Professionals You Need. People You Trust</small>	PROJECT		Sidney Tiger Sharks Aluminum Dock
	TITLE		
APPROVED	SIZE	IEI PROJECT NUMBER	REV
CHECKED	B	WR2204097	
DRAWN	Shay Steinbeisser	3/13/2023	SCALE 1:16
		WEIGHT	SHEET 3/4

Item a.

PARTS LIST		
ITEM	QTY	PART NAME
1	1	FRONT FRAME_EDGE PLATFORM 8
2	1	SIDES/INNER FRAME_EDGE PLATFORM 8
3	1	BACK FRAME_EDGE PLATFORM 8
4	1	FIBERGLASS I-BAR GRATING
5	1	FIBERGLASS T-BAR GRATING
6	6	FEET ASSEMBLY V5



 INTERSTATE ENGINEERING <small>Professionals You Need. People You Trust.</small>	PROJECT		Sidney Tiger Sharks Aluminum Dock
	TITLE		
APPROVED	SIZE	IEI PROJECT NUMBER	REV
CHECKED	B	WR2204097	
DRAWN	Shay Steinbeisser	3/13/2023	SCALE 1:16
		WEIGHT	SHEET 4/4