



# MEAD PUBLIC LIBRARY BOARD OF TRUSTEES AGENDA

May 20, 2026 at 5:00 PM

Mead Public Library, Rocca Conference Room, 710 N 8th Street

---

Notice of the Mead Public Library Board of Trustees Committee Meeting at 5:00 PM, Wednesday, May 20, 2026, at Mead Public Library's Rocca Room, 710 N 8th Street, Sheboygan, WI.

Persons with disabilities who need accommodations to attend this meeting should contact Pattie Pilz at the Mead Public Library, (920) 459-3400 extension 2039 as soon as possible. Persons other than commission, committee, and board members who wish to participate remotely shall provide notice to Pattie Pilz at the Mead Public Library at 920-459-3400 extension 2039 at least 24 hours before the meeting so that the person may be provided a remote link for that purpose.

## OPENING OF MEETING

1. Call to Order and Determination of Quorum - Erin Bremser, Vice President. All trustees may attend the meeting remotely.
2. Pledge of Allegiance
- [3.](#) Public Comments [5 people at 5 minutes each. Commenters must be City residents or residents of non-libraries areas in Sheboygan County] (Please sign in prior to meeting)
4. Introduction of New Board Member Barbara Alvarez
5. Introduction of New Board Member Katherine (Kathi) McNellis
6. Introduction of New Board Member Kurt Jensen
7. New Circulation Supervisor - Aleah Hill
8. Correspondence, Announcements, and Common Council Reports
- [9.](#) Approval of Minutes

## CONSENT AGENDA

- [10.](#) Services and Programming
- [11.](#) Facilities Report
- [12.](#) Security Update
- [13.](#) Monthly Statistics
- [14.](#) Monarch Library System - Maeve Quinn

15. Mead Library Foundation - Kathie Norman

[16.](#) Friends of Mead - Pattie Pilz

## **COMMITTEE REPORTS**

[17.](#) Finance Committee - Review and Possible Action on Payment of Current Expenditures, including Payroll and Special Revenues (Grants, Gifts and Donations). Receive Budget Status Report to Date

18. Exclusion Appeals Committee

[19.](#) Art Committee

## **ITEMS FOR DISCUSSION AND POSSIBLE ACTION**

20. Art Donation - Maria Alfaro

[21.](#) Code of Conduct Update

[22.](#) Table of Organization

## **ELECTION OF OFFICERS**

23. Nominations from the Floor and Election of Officers for 2026 - 2027 (Closed Ballot Permitted) - President and Vice President

24. Remarks from Outgoing and Incoming Officers

[25.](#) Adopt Schedule of Meetings for 2026-2027

26. Appoint Finance Officer for 2026-2027

27. Confirm/Propose One But No More Than Two Trustees for Continued Service/Election as Liaisons of the Mead Public Library Foundation

28. Confirm/Propose Trustee to Serve On/For Appointment to The Monarch Board - President

29. Appoint Standing Committee Chairs and Members as Set Forth in the Bylaws - President

30. Appoint Ad Hoc Committee Chairs and Members as Set Forth in the Bylaws - President

31. Roster Update

## **DIRECTOR'S REPORT**

## **UPCOMING MEETINGS**

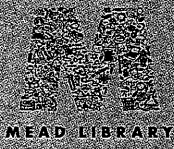
32. Library Board of Trustees on June 17, 2026, at 5:00 p.m.

## **ADJOURN**

33. Motion to Adjourn

**In compliance with Wisconsin's Open Meetings Law, this agenda was posted in the following locations more than 24 hours prior to the time of the meeting:**

City Hall • Mead Public Library  
Sheboygan County Administration Building • City's website



# WHAT WOULD MAKE THE LIBRARY EVEN BETTER?

Item 3.

## WE WELCOME YOUR IDEAS, SUGGESTIONS, COURTEOUS COMPLAINTS AND COMPLIMENTS

Are there events, services, equipment, digital resources, new public spaces or other enhancements you'd like to see at the library?

this place was amazing  
for me I was homeless  
and on drugs and San Antonio  
real helped me with his  
talks and resources to  
where I am clean and have  
houseings and in a much  
better place thanks

---

Please provide your contact information in case  
we need to follow up on your feedback (optional):



SCAN TO FILL  
OUT ONLINE



# MEAD PUBLIC LIBRARY BOARD OF TRUSTEES MINUTES

**April 15, 2026 at 5:00 PM**

**Mead Public Library, Rocca Room, 710 N 8th Street**

In-Person: Erin Bremser (Vice President), Michael Close, Susan Kuck, and Maeve Quinn

Virtual: Barbara Alvarez, Julia Hart, and Andre Walton

Staff: Garrett Erickson, Evan Grossen and Pattie Pilz

1. Call to Order

Bremser determined a quorum and called meeting to order at 5:00 p.m.

2. Pledge of Allegiance

3. Public Comments – none

4. Approval of Minutes

a. Quinn moved to approve the February 18, 2026, minutes. Close seconded. Motion passed.

5. Correspondence, Announcements, and Common Council Report

- a. Close reported that the Common Council approved a block grant fund to assist unhoused individuals for daytime services and to support those seeking treatment for addiction
- b. Meg Albrinck will retire from the board when her terms ends on 4/20/26
- c. Hugo Cardenas was recently hired as the new Facilities Director
- d. Bremser was recently elected to the Common Council
- e. Patron's positive comments were shared with those present

6. Consent Agenda (Items 6-11)

Quinn moved to adopt the consent agenda. Close seconded. Motion passed.

- a. Facilities Report
- b. Security Update
- c. Monthly Statistics
- d. Monarch Library System
- e. Mead Library Foundation
- f. Friends of Mead

12. Review and Possible Action on Payment of Current Expenditures including payroll and special revenues

- a. Financial reports for December 2025 and January 2026 were reviewed
- b. February and March 2026 financial reports will be available at our next meeting
- c. Walton moved to approve the payment of current expenditures (including payroll), and acceptance of special revenues. Close seconded. Motion passed.

13. Code of Conduct – Erickson

- a. Erickson worked with staff to update the policy
- b. Food and Beverages, Messes and Building Access sections were added

- c. Quinn asked Erickson if the word “loitering” could be changed as she didn’t think the public was familiar with what this word means. Erickson to mention this to the committee.
  - d. Erickson outlined the procedure if policies are not being followed.
    - i. Desk staff will explain policy to patron and, if warranted, ask patron to leave
    - ii. Security Specialist is called to assist, if needed
    - iii. Police are called, if patron is still uncooperative
  - e. Hart moved to approve the changes to the Code of Conduct Policy. Quinn seconded. Motion passed.
14. Food and Beverage Policy – Erickson
- a. Quinn moved to rescind this policy. Close seconded. Motion passed.
15. Digital Media Policy – Erickson
- a. Erickson to discuss City’s draft Digital Media Policy with Mead’s Communication Specialist
  - b. This policy may replace Mead’s Social Media Policy in full or in part
  - c. Kuck moved to table topic for May meeting. Quinn seconded. Motion passed.
16. Services and Programming - Erickson
- a. Six staff attended the Public Library Association Conference
  - b. Over 925 patrons attended WinterGreen, Mead’s spring event
  - c. 250<sup>th</sup> America’s Anniversary was on display on second floor
17. Staffing Update - Erickson
- a. Aleah Hill hired as Circulation Supervisor
  - b. Vacated Associate Librarian position will be posted
18. Safety and Welcoming Workgroup – Erickson
- a. Group researched redesigning spaces at Mead
  - b. Smoke-free block is being investigated to reduce loitering/smoking issues
  - c. Group will continue to review current policy and make additional recommendations at future board meetings
19. Staff In-Service Training – Erickson
- a. In-service training for staff was held the morning of April 10
    - i. State of library updated was presented by Erickson
    - ii. Staff committees and departments shared updates with everyone
    - iii. Training held on patron privacy and state statutes
20. Motion to Adjourn
- g. Close moved to adjourn the meeting. Quinn seconded. Motion passed.
  - h. Meeting was adjourned at 5:55 p.m.

Next Meeting May 20, 2026, at 5:00 p.m. in the Rocca Room.

## Support & Public Services Report to the Mead Library Board of Trustees

Submitted by Cheryl Nessman

May, 2026

### Staffing:

- We are in the process of hiring a new Associate Librarian for the Circulation area
- We are working with the consultant on a position description that will combine Library Assistant and Cataloger duties in hopes of getting that approved and posted before summer
- The following staff members attended the Wisconsin Association of Public Libraries Conference in Elkhart Lake in April:
  - Circulation Library Assistant  
Adult Services Librarian
  - Adult Services Associate Librarian
  - Deputy Director
  - Children's Librarian - presented on Ready Set Prek
  - Children's Librarian

### Programming/Exhibit/Outreach Highlights:

- May-Aug:
  - The 7th annual MeadCon was a huge success with over 400 attendees.
  - [Pre-registration](#) for the Summer Reading program is underway. Some of the fun activities that are planned include:
    - Summer Math Adventure (May 26-Aug 8)
    - Tween Summer Science Club (Wednesdays, June 10-July 8)
    - Acuity Cool Picks Summer Reading Program Kickoff for Teens (June 16th)
    - Kids on Canvas (June 18th)
    - Red, White & Read: Craftsavaganza (July 2)
    - Dinosaur Dimansion Show (July 7)
    - Stuffed Animal Sleepover (a family favorite! July 14-15)
    - Be My Neighbor Storytime (Tuesdays July 14-Aug. 4)
    - Milwaukee Public Museum Dinosaur Hunt (Aug. 1)
    - Tween Steam Camp (Aug. 3-6)
    - Bubble Bash at the City Green (Aug. 12)
    - Build Your Own 3-D Dragon (Aug. 20)
  - Amanda Strojinc will be serving as [Mead's STEMist-in-Residence](#) with programming on gardening, homesteading, and culminating in a community project to beautify a portion of the library's landscaping.

**Patron Services**

- We are implementing LibraryIQ and SmartyCat services which are designed to help with collection management and evaluation, as well as with targeted marketing of materials. LibraryIQ also allows libraries to customize the statistical dashboard to assist with programming and outreach efforts.
- Staff have begun enforcing the new food policy contained in the updated Code of Conduct. Things have been going smoothly so far.
- The 24/7 Holds Lockers are still very popular and completely full most days, resulting in a backlog of holds a lot of the time.
- The Programming 4 the Unhoused working group has been working on bringing outside resources in for our library users. Aubrey and Aleah worked with a Navigator at the Job Center of Wisconsin to create appointments that Library Staff will field so the navigator can best help individuals while at the library. Cheryl and Katie have been working with some local attorneys to start a Free Legal Help Clinic at the library, and they've also been working with HHS to create a health hub.

**Collections**

- We continue working to combine our Young Adult and Adult Graphic Novel/Manga collections
- There is a new Role Playing Game (RPG) collection between the magazines and Imaginarium on 2nd floor.

## Facilities Report - May 2026

### In Process

- Roof Drain – drain is not sealed properly and is leaking. We are working with plumber and roofer to repair
- Restroom Remodel - working with engineering firm to create drawings for cost estimate
- Second floor study rooms – awaiting start date in fall
- Sensory Room – awaiting start date in fall
- Warschau Display Unit - units onsite, need to be set up for public viewing
- Outside Landscaping – requested a bid for landscaping
- AV microphones system funding approved by Mead Foundation Board (\$25,000)
  - Working with vendor to get job scheduled
- Window shades funding approved by Mead Foundation (\$26,732.51)
  - Working with vendor to get job scheduled

### Completed

- Roof Replacement – roof completed, safety railings need to be completed
- Staff computer added to back end of the 24/7 holds locker area
- Additional camera – added/moved cameras as requested
- Fob access – test of new fob access hardware installed on main electrical door
- Phone booths and security office
- Second floor carpet issue - contractor came in and re-adhered carpet down
- Imaginarium – additional outlets installed by city electrician
- Repositioned library furniture per Deputy Director's request
- Anti-slam doors installed
- 3rd floor entrance redesigned for ADA accessibility

Disruptive Patron Interaction Report April 2026							
		Monthly			Year To Date		
	Age	April 2025	April 2026	Monthly 2025 vs 2026	Year-to-date 2025	Year-to-date 2026	YTD 2025 vs 2026
<b>Reported Incidents</b>	Adult	46	41	-11%	156	190	22%
	Teen	5	5	0%	35	23	-34%
	Total	51	46	-10%	191	213	12%
<b>Exclusions Over 10 Days</b>		3	11	267%	25	46	84%
<b>Emergency Services Called</b>		5	1	-80%	12	6	-50%

## Volunteer Report - April 2026

<b>Type</b>	<b>Total Hours</b>	<b>Volunteer Count</b>
Adult	186	34
Teen	13	3
Grand total	199	37

		Monthly			Year To Date		
Type	Name	*April 2025	*April 2026	*Monthly 2025 vs 2026	*Year-to-date 2025	*Year-to-date 2026	*YTD 2025 vs 2026
<b>Circulation Transactions</b>	Adult Materials	16,695	15,753	-6%	69,746	64,581	-7%
	Teen Materials	1,575	1,339	-15%	4,535	4,325	-5%
	Children's Materials	10,656	9,552	-10%	45,498	40,288	-11%
	Total Adult/Teen/Children's Materials	28,926	26,644	-8%	119,779	109,194	-9%
<b>Materials Shared With Other Libraries</b>	Items provided to other libraries from Mead	10,634	10,497	-1%	44,078	43,773	-1%
	Items received for Mead patrons from other libraries	4,742	4,327	-9%	19,509	18,033	-8%
	Total Interlibrary Loans (Transits)	15,376	14,824	-4%	63,587	61,806	-3%
<b>E-Content Checkouts</b>	Total E-Content Checkouts	10,205	10,183	0%	41,490	40,359	-3%
<b>Library Visits</b>	Gate count	22,803	19,932	-13%	80,920	81,790	1%
<b>Research Inquiries</b>	Research Inquiries	3,990	3,269	-18%	12,300	9,924	-19%
<b>Internet Usage Provided</b>	Library Workstation Sessions	2,084	2,145	3%	8,928	8,219	-8%
	Wireless Sessions	6,968	6,058	-13%	30,210	24,137	-20%
<b>Number of Library Card Holders</b>	Sheboygan Residents				29,137	29,530	1%
	Non-Sheboygan Residents				6,487	6,451	-1%
	Total Number of Library Card Holders				35,624	35,981	1%
<b>Classes, Seminars, Workshops, Events</b>	Children (0-11) Quantity	39	49	26%	153	177	16%
	Children (0-11) Participants	1,402	1,081	-23%	4,668	4,327	-7%
	Teen (12-18) Quantity	1	4	300%	7	15	114%
	Teen (12-18) Participants	15	235	1467%	183	392	114%
	Adult (18+) Quantity	25	42	68%	110	155	41%
	Adult (18+) Participants	348	295	-15%	1,321	1,433	8%
	Total number of Classes, Seminars, Workshops, Events	65	95	46%	270	347	29%
	Total number of Participants	1,765	1,611	-9%	6,172	6,152	0%
<b>Conference Room Utilization</b>	Rocca Meeting Room	56%	61%	5%	48%	62%	14%
	Loft Meeting Room	35%	56%	21%	31%	47%	16%
	Public Conference Room #1	38%	40%	3%	40%	46%	7%
	Public Conference Room #2	47%	46%	-1%	42%	40%	-1%
<b>Study Rooms Utilization</b>	Study Rooms Hours Used	750	756	1%	3305.5	3424.25	4%
	Percent Utilization	54%	54%	0%	63%	66%	3%

10% or higher  
-10% or lower

## Monarch Library System Board of Trustees

### Minutes

Kewaskum Town Hall 9019 Kettle Moraine Drive Kewaskum, WI 53040

March 12, 2026

1. **Call to Order; Doane called the meeting to order at 6:00 pm. The meeting was properly**

**noticed in accordance with Wisconsin Open Meetings Law.**

2. **Roll Call: Doane, Goehring, Bailey, Caine, Neis, Nelson, Quinn, and Strom, were present. Absent: Katzka, Sprenger, Olsen, Lamb, Westfall, and Marose  
Also Present: Grover, Federer, Hoffman, MLS Staff.**
3. **Public Comment or Correspondence: None**
4. **Approval of the Agenda for March 12, 2026:**

*Nelson motioned to approve the Agenda for March 12, 2026, with the following amendments*

- i. **#7 to be changed to: Approval of Expenditures for January and February 2026.**
- ii. **#8 Removal of Meet Ben Miller, State Librarian from the agenda.**

*Neis seconded the motion. Motion carried.*

#### **5. Approval of the Minutes for February 12, 2026:**

*a. Goehring motioned to approve the minutes. Motion seconded by Nelson. Motion carried.*

#### **6. Approval of Expenditures for January and February 2026:**

*a. Nelson motioned to approve the Expenditure totals for January as \$239,318.49. and for February as \$372,184.89. Bailey seconded the motion. Motion passed.*

#### **7. Monarch Library System Update:**

1. **Grover asked if there were any questions regarding the Monarch System Update as**

**presented in the packet. Finding none the meeting continued.**

2. **All the libraries completed and submitted their 2025 Annual Reports by February 27<sup>th</sup>.**
3. **The 2025 Monarch Annual System Report is in process.**
4. **Innovative is in the process of assigning an engineer and creating the team for our**

conversion to the cloud with the first meeting to be held in May.

5. Three member libraries have completed or are nearing completion of their renovation projects.

i. Reeseville's ribbon cutting is set for March 14<sup>th</sup>.

ii. Port Washington will have their ribbon cutting towards the end of March.

iii. Beaver Dam is anticipating their move back to their renovated library to begin in mid-April. They will be closed April 15 through May 15.

6. Six of our new directors will be attending the DPI New Directors Boot Camp. They are: Darnell-OO, Frey-KE, Mercer-HU, Ney-MV, Schultz-JU, and O'Brien-IR.

7. DPI informed us that \$3 million will be awarded to Wisconsin by LSTA for grants.

8. Hustisford and Iron Ridge have each received a \$2500 grant to hire a Summer Intern.

9. *Monarch will be applying for the Accessibility Grant to be offered. The unofficial*

*amount would be \$10,000. This will be available to help fund revision of our website to comply with the required accessibility updates needed on the website. Any remaining funds will be distributed to aid smaller library website accessibility updating.*

10. *Grover presented a booklet created by students at Lincoln Erdman Elementary proclaiming their appreciation of the Bookmobile.*

11. *We had a successful update of Polaris on March 8<sup>th</sup> moving from version 7.7 to 8.0.*

**8. Committee Reports:**

**a. The Executive Committee**

*i. Doane motioned to authorize the Executive Committee to give final approval of the 2025 Annual System Report at a meeting before the end of March. Nelson seconded the motion. Motion carried.*

**b. Operations Committee**

i. The Operations Committee did not meet.

**c. Finance Committee**

i. The Finance Committee did not meet.

ii. Grover stated both Finance and Bookmobile Committees will be approached in April or May to hold meetings for presentations of their respective budgets for approval.

**d. Bookmobile Committee**

i. The Bookmobile Committee did not meet.

**9. New Business:**

- 1. Dean Cooper, Senior Account Manager, Innovative prepared a power point presentation “Cloud Hosting for Polaris” for our February Directors Council.**
  - i. The presentation showed several of the libraries and systems who are using Polaris Cloud Hosting that have not been compromised. It also showed libraries and systems that are not hosted by Innovative that have been compromised.**
  - ii. The presentation shows the various certifications that are applied to Polaris Cloud Hosting.**
  - iii. It outlines the various parts of Polaris and Vega that we will have available to us. All parts of VEGA including Discover with LX Starter, and Promote will be part of our package.**
- 2. We have 2 prospective applicants for the Network Administrator position.**

**10. Unfinished Business - None**

**11. Next meeting** will be held on May 14, 2026, at 6:00 pm at the Kewaskum Community Center.

**12. Adjourn** - Nelson motioned to adjourn with Caine, seconding the motion. Meeting was adjourned at 6:28 pm

**Friends of Mead  
Board of Trustee's Report – May 2026**

1. Circulation Supervisor position filled
2. Associate Librarian interviews scheduled for May 21
3. First two Lincoln Lectures were successful. Final two lectures will be held in the Rocca Room from 6-8 pm as outlined below:
  - May 21 = Lincoln: Dreams, Omens, and Ghosts
  - June 4 = Lincoln: Caskets, Funerals, and Burials
4. Friends gave staff members a \$5 gift card for Paradigm Coffee for National Library Workers Day on April 21
5. Gift of Reading Campaign ended May 15 – final tally TBD
6. Pop Up Sale March 7 proceeds were \$466.50
7. Odds and Ends Sale proceeds were \$450.00
8. Jigsaw Puzzle Sale scheduled for July 14 from 3-7p.m. in Rocca Room
9. Sharon Winkle plaque has been hung in the Friends Bookstore
10. Friends donated 82 Chilton and Mitchell auto repair books to Lakeshore College who will use them in programs for incarcerated adults
11. Big Book Sale scheduled for October 16 and 17

**Mead Public Library - Financial Statement for March 31, 2026**

ORG	OBJ	ACCOUNT DESCRIPTION	ORIGINAL APPROP	TRANFRS/ADJSMTS	REVISED BUDGET	YTD ACTUAL	ENCUMBRANCES	AVAILABLE BUDGET
255	411100	PROPERTY TAX LEVY	(3,117,913.00)	-	(3,117,913.00)	(776,210.02)	-	(2,341,702.98)
255	437200	MONARCH - SHEBOYGAN COUNTY	(932,458.00)	-	(932,458.00)	-	-	(932,458.00)
255	437210	MONARCH - OZAUKEE COUNTY	(32,793.00)	-	(32,793.00)	-	-	(32,793.00)
255	437220	MONARCH - RESOURCE	(100,000.00)	-	(100,000.00)	(100,000.00)	-	-
255	437230	MONARCH - ADJACENT COUNTIES	(45,787.00)	-	(45,787.00)	(1,425.48)	-	(44,361.52)
255	451915	PATRON FEES	(7,000.00)	-	(7,000.00)	(1,975.21)	-	(5,024.79)
255	461000	PHOTOCOPIES	(8,000.00)	-	(8,000.00)	(6,472.52)	-	(1,527.48)
255	469100	VENDING/CONCESSION SALES	(600.00)	-	(600.00)	(183.66)	-	(416.34)
255	481100	INTEREST INCOME	(50,000.00)	-	(50,000.00)	(13,303.63)	-	(36,696.37)
255	485000	CONTRIBUTIONS/DONATIONS	(70,000.00)	-	(70,000.00)	(144,227.51)	-	74,227.51
255	489000	MISCELLANEOUS REVENUE	(2,000.00)	-	(2,000.00)	(268.50)	-	(1,731.50)
<b>TOTAL REVENUE</b>			<b>(4,366,551.00)</b>	<b>-</b>	<b>(4,366,551.00)</b>	<b>(1,044,066.53)</b>	<b>-</b>	<b>(3,322,484.47)</b>
255511	510110	FULL TIME SALARIES - REGULAR	2,377,235.00	-	2,377,235.00	387,357.39	-	1,989,877.61
255511	510111	FULL TIME SALARIES - OVERTIME	-	-	-	560.48	-	(560.48)
255511	510120	PART TIME SALARIES - REGULAR	-	-	-	63,082.76	-	(63,082.76)
255511	520310	FICA	143,995.00	-	143,995.00	26,563.47	-	117,431.53
255511	520311	MEDICARE	33,673.00	-	33,673.00	6,212.42	-	27,460.58
255511	520320	WI RETIREMENT FUND	162,710.00	-	162,710.00	30,960.38	-	131,749.62
255511	520340	HEALTH INSURANCE	494,155.00	-	494,155.00	125,957.46	-	368,197.54
255511	520350	DENTAL INSURANCE	30,046.00	-	30,046.00	7,514.28	-	22,531.72
255511	520360	LIFE INSURANCE	4,188.00	-	4,188.00	1,046.16	-	3,141.84
255511	520400	WORKERS COMPENSATION	847.00	-	847.00	847.00	-	-
255511	531100	CONTRACTED SERVICES	163,027.00	-	163,027.00	26,019.70	-	137,007.30
255511	531110	FINANCIAL SERVICE FEES	6,435.00	-	6,435.00	2,313.08	-	4,121.92
255511	531206	INSURANCE PREMIUMS	24,150.00	-	24,150.00	12,576.57	-	11,573.43
255511	531400	ADVERTISING & MARKETING	9,400.00	-	9,400.00	939.12	-	8,460.88
255511	531800	PROGRAM SERVICES	10,000.00	-	10,000.00	7,818.35	-	2,181.65
255511	533105	IT SERVICE FUND CHARGES	57,746.00	-	57,746.00	57,746.00	-	-
255511	533106	SOFTWARE MAINT & SUBSCRIPTIONS	30,000.00	-	30,000.00	21,753.70	-	8,246.30
255511	536125	EMPLOYEE DEVELOPMENT	8,500.00	-	8,500.00	707.28	-	7,792.72
255511	537100	VEHICLE & PARKING EXPENSES	19,440.00	-	19,440.00	4.35	-	19,435.65
255511	540100	OFFICE SUPPLIES	11,700.00	-	11,700.00	1,590.54	-	10,109.46
255511	540130	POSTAGE & DELIVERY	7,000.00	-	7,000.00	4,212.39	-	2,787.61
255511	540205	DISPLAYS	1,000.00	-	1,000.00	-	-	1,000.00
255511	540222	JANITORIAL SUPPLIES	-	-	-	-	-	-
<b>*Janitorial Supplies expense budgets and actuals covered by Building and Grounds Department starting in 2025</b>								
255511	548001	DONATION PURCHASES	70,000.00	-	70,000.00	39,408.91	39,295.32	(8,704.23)
255511	548002	MATERIALS - ALL CATEGORIES	370,767.00	-	370,767.00	57,552.94	-	313,214.06

**Mead Public Library - Financial Statement for March 31, 2026**

ORG	OBJ	ACCOUNT DESCRIPTION	ORIGINAL APPROP	TRANFRS/ADJSMTS	REVISED BUDGET	YTD ACTUAL	ENCUMBRANCES	AVAILABLE BUDGET
255511	548003	OTHER CONTENT	150,102.00	-	150,102.00	197,058.20	-	(46,956.20)
255511	550110	BUILDING MAINT & REPAIR	-	-	-	-	-	-
<b>*Building Maint &amp; Repair expense budgets and actuals covered by Building and Grounds Department starting in 2025</b>								
255511	555100	UTILITIES	148,835.00	-	148,835.00	40,680.28	-	108,154.72
255511	555120	PHONES	4,000.00	-	4,000.00	-	-	4,000.00
255511	560255	TOOLS & SMALL EQUIPMENT	3,100.00	-	3,100.00	513.50	-	2,586.50
255511	631200	BUILDING IMPROVEMENTS	-	-	-	57,862.05	(57,862.05)	-
255511	652200	IT EQUIPMENT	24,500.00	-	24,500.00	23,331.96	-	1,168.04
<b>TOTAL EXPENSES</b>			<b>4,366,551.00</b>	<b>-</b>	<b>4,366,551.00</b>	<b>1,202,190.72</b>	<b>(18,566.73)</b>	<b>3,182,927.01</b>
TOTAL REVENUE LESS EXPENSES			-	-	-	158,124.19	(18,566.73)	(139,557.46)

**Mead Public Library - Financial Statement for February 28, 2026**

ORG	OBJ	ACCOUNT DESCRIPTION	ORIGINAL APPROP	TRANFRS/ADJSMTS	REVISED BUDGET	YTD ACTUAL	ENCUMBRANCES	AVAILABLE BUDGET
255	411100	PROPERTY TAX LEVY	(3,117,913.00)	-	(3,117,913.00)	(776,210.02)	-	(2,341,702.98)
255	437200	MONARCH - SHEBOYGAN COUNTY	(932,458.00)	-	(932,458.00)	-	-	(932,458.00)
255	437210	MONARCH - OZAUKEE COUNTY	(32,793.00)	-	(32,793.00)	-	-	(32,793.00)
255	437220	MONARCH - RESOURCE	(100,000.00)	-	(100,000.00)	-	-	(100,000.00)
255	437230	MONARCH - ADJACENT COUNTIES	(45,787.00)	-	(45,787.00)	(713.00)	-	(45,074.00)
255	451915	PATRON FEES	(7,000.00)	-	(7,000.00)	(1,552.67)	-	(5,447.33)
255	461000	PHOTOCOPIES	(8,000.00)	-	(8,000.00)	(4,538.35)	-	(3,461.65)
255	469100	VENDING/CONCESSION SALES	(600.00)	-	(600.00)	(136.16)	-	(463.84)
255	481100	INTEREST INCOME	(50,000.00)	-	(50,000.00)	(11,153.38)	-	(38,846.62)
255	485000	CONTRIBUTIONS/DONATIONS	(70,000.00)	-	(70,000.00)	(144,227.51)	-	74,227.51
255	489000	MISCELLANEOUS REVENUE	(2,000.00)	-	(2,000.00)	(184.50)	-	(1,815.50)
		<b>TOTAL REVENUE</b>	<b>(4,366,551.00)</b>	<b>-</b>	<b>(4,366,551.00)</b>	<b>(938,715.59)</b>	<b>-</b>	<b>(3,427,835.41)</b>
255511	510110	FULL TIME SALARIES - REGULAR	2,377,235.00	-	2,377,235.00	236,317.05	-	2,140,917.95
255511	510111	FULL TIME SALARIES - OVERTIME	-	-	-	360.56	-	(360.56)
255511	510120	PART TIME SALARIES - REGULAR	-	-	-	38,487.01	-	(38,487.01)
255511	520310	FICA	143,995.00	-	143,995.00	16,196.21	-	127,798.79
255511	520311	MEDICARE	33,673.00	-	33,673.00	3,787.86	-	29,885.14
255511	520320	WI RETIREMENT FUND	162,710.00	-	162,710.00	19,127.24	-	143,582.76
255511	520340	HEALTH INSURANCE	494,155.00	-	494,155.00	86,512.08	-	407,642.92
255511	520350	DENTAL INSURANCE	30,046.00	-	30,046.00	5,170.62	-	24,875.38
255511	520360	LIFE INSURANCE	4,188.00	-	4,188.00	707.69	-	3,480.31
255511	520400	WORKERS COMPENSATION	847.00	-	847.00	847.00	-	-
255511	531100	CONTRACTED SERVICES	163,027.00	-	163,027.00	7,751.03	-	155,275.97
255511	531110	FINANCIAL SERVICE FEES	6,435.00	-	6,435.00	1,657.40	-	4,777.60
255511	531206	INSURANCE PREMIUMS	24,150.00	-	24,150.00	12,576.57	-	11,573.43
255511	531400	ADVERTISING & MARKETING	9,400.00	-	9,400.00	272.35	-	9,127.65
255511	531800	PROGRAM SERVICES	10,000.00	-	10,000.00	4,010.58	-	5,989.42
255511	533105	IT SERVICE FUND CHARGES	57,746.00	-	57,746.00	57,746.00	-	-
255511	533106	SOFTWARE MAINT & SUBSCRIPTIONS	30,000.00	-	30,000.00	4,540.99	-	25,459.01
255511	536125	EMPLOYEE DEVELOPMENT	8,500.00	-	8,500.00	576.46	-	7,923.54
255511	537100	VEHICLE & PARKING EXPENSES	19,440.00	-	19,440.00	4.35	-	19,435.65
255511	540100	OFFICE SUPPLIES	11,700.00	-	11,700.00	979.78	-	10,720.22
255511	540130	POSTAGE & DELIVERY	7,000.00	-	7,000.00	2,000.00	-	5,000.00
255511	540205	DISPLAYS	1,000.00	-	1,000.00	-	-	1,000.00
255511	540222	JANITORIAL SUPPLIES	-	-	-	-	-	-
		<b>*Janitorial Supplies expense budgets and actuals covered by Building and Grounds Department starting in 2025</b>						
255511	548001	DONATION PURCHASES	70,000.00	-	70,000.00	18,407.12	13,537.60	38,055.28
255511	548002	MATERIALS - ALL CATEGORIES	370,767.00	-	370,767.00	32,636.60	-	338,130.40

**Mead Public Library - Financial Statement for February 28, 2026**

ORG	OBJ	ACCOUNT DESCRIPTION	ORIGINAL APPROP	TRANFRS/ADJSMTS	REVISED BUDGET	YTD ACTUAL	ENCUMBRANCES	AVAILABLE BUDGET
255511	548003	OTHER CONTENT	150,102.00	-	150,102.00	174,413.96	-	(24,311.96)
255511	550110	BUILDING MAINT & REPAIR	-	-	-	-	-	-
<b>*Building Maint &amp; Repair expense budgets and actuals covered by Building and Grounds Department starting in 2025</b>								
255511	555100	UTILITIES	148,835.00	-	148,835.00	27,490.33	-	121,344.67
255511	555120	PHONES	4,000.00	-	4,000.00	-	-	4,000.00
255511	560255	TOOLS & SMALL EQUIPMENT	3,100.00	-	3,100.00	49.47	-	3,050.53
255511	631200	BUILDING IMPROVEMENTS	-	-	-	9,690.10	(9,690.10)	-
255511	652200	IT EQUIPMENT	24,500.00	-	24,500.00	8,863.41	-	15,636.59
<b>TOTAL EXPENSES</b>			<b>4,366,551.00</b>	<b>-</b>	<b>4,366,551.00</b>	<b>771,179.82</b>	<b>3,847.50</b>	<b>3,591,523.68</b>
TOTAL REVENUE LESS EXPENSES			-	-	-	(167,535.77)	3,847.50	163,688.27

*Mead Public Library - Accounts Payable February 1st, 2026 through February 28th, 2026*

VENDOR NAME	ACCOUNT	ACCOUNT DESC	AMOUNT	WARRANT	CHECK NO	FULL DESC
MEAD PUBLIC LIBRARY	255 211000	ACCOUNTS PAYABLE	5,000.00	02272026	370,794	DONATION FROM ESTATE OF CAROL J. SHAFFER
KAY H BAJUS	255 451915	PATRON FEES	21.80	02182026	370,694	PATRON REFUND
NIKKI BRIGHAM	255 451915	PATRON FEES	57.85	02182026	370,697	PATRON REFUND
AT&T CORP	255511 531100	CONTRACTED SERVICES	90.02	02182026	370,622	ACCT #831-001-4630 820 JAN BILLING MPL BROADBAND
MONITORING SERVICES	255511 531100	CONTRACTED SERVICES	520.00	02182026	370,681	FIRE ALARM/SPRINKLER SYS MONITORING 3/1/26-3/1/27
ENGBERG ANDERSON INC	255511 531100	CONTRACTED SERVICES	170.00	02182026	370,647	MEAD PL INTERIOR & AMH RENO - PROJ # 213396.02
AT&T	255511 531100	CONTRACTED SERVICES	415.81	02182026	370,621	ACCT#920 Z83-0200 109 8 JAN TELEPHONE EXPENSE
AMAZON CAPITAL SERVI	255511 531800	PROGRAM SERVICES	226.05	02182026	7,099	ACCT #A2JXVCVZU4S49M - PROGRAM EXPENSE
AMAZON CAPITAL SERVI	255511 531800	PROGRAM SERVICES	39.96	02182026	7,099	ACCT #A2JXVCVZU4S49M PROGRAM EXPENSE
AMAZON CAPITAL SERVI	255511 531800	PROGRAM SERVICES	12.46	02182026	7,099	ACCT #A2JXVCVZU4S49M PROGRAM EXPENSE
AMAZON CAPITAL SERVI	255511 531800	PROGRAM SERVICES	35.98	02182026	7,099	ACCT #A2JXVCVZU4S49M PROGRAM EXPENSE
AMAZON CAPITAL SERVI	255511 531800	PROGRAM SERVICES	34.96	02182026	7,099	ACCT #A2JXVCVZU4S49M PROGRAM EXPENSE
AMAZON CAPITAL SERVI	255511 531800	PROGRAM SERVICES	123.97	02182026	7,099	ACCT #A2JXVCVZU4S49M YS PROGRAMMING
AMAZON CAPITAL SERVI	255511 531800	PROGRAM SERVICES	28.88	02182026	7,099	ACCT #A2JXVCVZU4S49M YS PROGRAMMING SUPPLIES
AMAZON CAPITAL SERVI	255511 531800	PROGRAM SERVICES	75.01	02182026	7,099	ACCT #A2JXVCVZU4S49M SEWING PROGRAM ITEMS
AMAZON CAPITAL SERVI	255511 531800	PROGRAM SERVICES	95.94	02182026	7,099	ACCT #A2JXVCVZU4S49M PROGRAM EXPENSE
AMAZON CAPITAL SERVI	255511 531800	PROGRAM SERVICES	44.62	02182026	7,099	ACCT #A2JXVCVZU4S49M - PROGRAM EXPENSE
AMAZON CAPITAL SERVI	255511 531800	PROGRAM SERVICES	104.23	02182026	7,099	ACCT #A2JXVCVZU4S49M PROGRAM EXPENSE
AMAZON CAPITAL SERVI	255511 531800	PROGRAM SERVICES	100.27	02182026	7,099	ACCT #A2JXVCVZU4S49M STEM SELF DIRECTED ACTIVITY
AMAZON CAPITAL SERVI	255511 531800	PROGRAM SERVICES	20.45	02182026	7,099	ACCT #A2JXVCVZU4S49M WISH CARD PAPERS
AMAZON CAPITAL SERVI	255511 531800	PROGRAM SERVICES	151.70	02182026	7,099	ACCT #A2JXVCVZU4S49M YS PROGRAMMING
AMAZON CAPITAL SERVI	255511 531800	PROGRAM SERVICES	9.48	02182026	7,099	ACCT #A2JXVCVZU4S49M WISH CARDS
AMAZON CAPITAL SERVI	255511 531800	PROGRAM SERVICES	9.98	02182026	7,099	ACCT #A2JXVCVZU4S49M PROGRAM EXPENSE
AMAZON CAPITAL SERVI	255511 531800	PROGRAM SERVICES	28.99	02182026	7,099	ACCT #A2JXVCVZU4S49M PROGRAM EXPENSE
AMAZON CAPITAL SERVI	255511 531800	PROGRAM SERVICES	25.37	02182026	7,099	ACCT #A2JXVCVZU4S49M PROGRAM EXPENSE
AMAZON CAPITAL SERVI	255511 531800	PROGRAM SERVICES	52.48	02182026	7,099	ACCT #A2JXVCVZU4S49M PROGRAM EXPENSE
AMAZON CAPITAL SERVI	255511 540100	OFFICE SUPPLIES	29.99	02042026	7,059	ACCT #A2JXVCVZU4S49M OFFICE SUPPLIES
AMAZON CAPITAL SERVI	255511 540100	OFFICE SUPPLIES	49.08	02042026	7,059	ACCT #A2JXVCVZU4S49M OFFICE SUPPLIES
AMAZON CAPITAL SERVI	255511 540100	OFFICE SUPPLIES	61.74	02182026	7,099	ACCT #A2JXVCVZU4S49M OFFICE SUPPLIES
AMAZON CAPITAL SERVI	255511 548001	DONATION PURCHASES	5.99	02182026	7,099	ACCT #A2JXVCVZU4S49M FOUNDATION WISHLIST
AMAZON CAPITAL SERVI	255511 548001	DONATION PURCHASES	9.99	02182026	7,099	ACCT #A2JXVCVZU4S49M YS PROGRAMMING
AMAZON CAPITAL SERVI	255511 548001	DONATION PURCHASES	36.16	02182026	7,099	ACCT #A2JXVCVZU4S49M MAKERSPACE EQUIPMENT
ZOOLOGICAL SOCIETY O	255511 548001	DONATION PURCHASES	1,000.00	02182026	370,701	FUNDED BY THE MEAD LIBRARY FOUNDATION
MIDWEST TAPE	255511 548002	MATERIALS - ALL CATEGORIES	470.19	02042026	7,082	CUST #2000015656 MATERIAL PURCHASE
MIDWEST TAPE	255511 548002	MATERIALS - ALL CATEGORIES	42.16	02042026	7,082	CUST #2000016317 MONARCH GRANT/PROJECT
MIDWEST TAPE	255511 548002	MATERIALS - ALL CATEGORIES	284.30	02042026	7,082	CUST #2000016317 MONARCH GRANT/PROJECT FUND
MIDWEST TAPE	255511 548002	MATERIALS - ALL CATEGORIES	828.75	02182026	7,134	CUST# 2000015656 MATERIAL PURCHASE
MIDWEST TAPE	255511 548002	MATERIALS - ALL CATEGORIES	449.61	02182026	7,134	CUST# 2000015656 MATERIAL PURCHASE
MIDWEST TAPE	255511 548002	MATERIALS - ALL CATEGORIES	284.97	02182026	7,134	CUST# 2000016317 MONARCH GRANT/PROJECT
CAVENDISH SQUARE	255511 548002	MATERIALS - ALL CATEGORIES	186.03	02182026	370,635	STANDING ORDERS ACCT #1000136576

*Mead Public Library - Accounts Payable February 1st, 2026 through February 28th, 2026*

VENDOR NAME	ACCOUNT	ACCOUNT DESC	AMOUNT	WARRANT	CHECK NO	FULL DESC
UNIVERSITY OF MINN.	255511 548002	MATERIALS - ALL CATEGORIES	2,420.00	02182026	370,748	CUST #5059519 CLEAR RFID TAGS-COLLECTION SUPPLIES
INGRAM LIBRARY SERV	255511 548002	MATERIALS - ALL CATEGORIES	20.93	02042026	7,075	ACCT #20W1532 MATERIAL PURCHASE
INGRAM LIBRARY SERV	255511 548002	MATERIALS - ALL CATEGORIES	340.47	02042026	7,075	CUST #20W8082 MAT. PURCH & MONARCH GRANT \$34.18
INGRAM LIBRARY SERV	255511 548002	MATERIALS - ALL CATEGORIES	22.29	02042026	7,075	ACCT #20W8082 MATERIAL PURCHASE
INGRAM LIBRARY SERV	255511 548002	MATERIALS - ALL CATEGORIES	1,536.78	02182026	7,127	ACCT #20W1532 MATERIAL PURCHASE
INGRAM LIBRARY SERV	255511 548002	MATERIALS - ALL CATEGORIES	83.83	02182026	7,127	ACCT #20W1532 MATERIAL PURCHASE
INGRAM LIBRARY SERV	255511 548002	MATERIALS - ALL CATEGORIES	2,064.53	02182026	7,127	ACCT # 20W1532 MATERIAL PURCHASE
INGRAM LIBRARY SERV	255511 548002	MATERIALS - ALL CATEGORIES	96.17	02182026	7,127	ACCT # 20W8082 MATERIAL PURCHASE
INGRAM LIBRARY SERV	255511 548002	MATERIALS - ALL CATEGORIES	1,740.02	02182026	7,127	ACCT #20W1532 MATERIAL PURCHASE
INGRAM LIBRARY SERV	255511 548002	MATERIALS - ALL CATEGORIES	46.50	02182026	7,127	ACCT #20W8082 MATERIAL PURCHASE
INGRAM LIBRARY SERV	255511 548002	MATERIALS - ALL CATEGORIES	747.80	02182026	7,127	ACCT #20W1532 MATERIAL PURCHASE
INGRAM LIBRARY SERV	255511 548002	MATERIALS - ALL CATEGORIES	66.04	02182026	7,127	ACCT #20X7192 MONARCH GRANT/PROJECT
INGRAM LIBRARY SERV	255511 548002	MATERIALS - ALL CATEGORIES	13.19	02182026	7,127	ACCT #20W1532 MATERIAL PURCHASE
INGRAM LIBRARY SERV	255511 548002	MATERIALS - ALL CATEGORIES	20.65	02182026	7,127	ACCT #20W8082 MATERIAL PURCHASE
INGRAM LIBRARY SERV	255511 548002	MATERIALS - ALL CATEGORIES	55.95	02182026	7,127	ACCT #20W8082 MATERIAL PURCHASE
INGRAM LIBRARY SERV	255511 548002	MATERIALS - ALL CATEGORIES	63.65	02182026	7,127	ACCT #20W1532 MATERIAL PURCHASE
INGRAM LIBRARY SERV	255511 548002	MATERIALS - ALL CATEGORIES	4,105.43	02182026	7,127	ACCT #20W1532 MATERIAL PURCHASE
INGRAM LIBRARY SERV	255511 548002	MATERIALS - ALL CATEGORIES	19.50	02182026	7,127	ACCT #20W1532 MATERIAL PURCHASE
INGRAM LIBRARY SERV	255511 548002	MATERIALS - ALL CATEGORIES	140.97	02182026	7,127	ACCT #20X7192 MONARCH GRANT/PROJECT
INGRAM LIBRARY SERV	255511 548002	MATERIALS - ALL CATEGORIES	19.50	02182026	7,127	ACCT #20W1532 MATERIAL PURCHASE
INGRAM LIBRARY SERV	255511 548002	MATERIALS - ALL CATEGORIES	291.14	02182026	7,127	ACCT #20W8082 MATERIAL PURCHASE
AMAZON CAPITAL SERVI	255511 548002	MATERIALS - ALL CATEGORIES	15.95	02182026	7,099	ACCT #A2JXVCVZU4S49M MONARCH GRANT/PROJECT
AMAZON CAPITAL SERVI	255511 548002	MATERIALS - ALL CATEGORIES	33.96	02182026	7,099	ACCT #A2JXVCVZU4S49M COLL. SUPPLIES
AMAZON CAPITAL SERVI	255511 548002	MATERIALS - ALL CATEGORIES	18.19	02182026	7,099	ACCT #A2JXVCVZU4S49M COLLECTION SUPPLIES
AMAZON CAPITAL SERVI	255511 548002	MATERIALS - ALL CATEGORIES	33.00	02182026	7,099	ACCT #A2JXVCVZU4S49M MONARCH GRANT/PROJECT
AMAZON CAPITAL SERVI	255511 548002	MATERIALS - ALL CATEGORIES	36.28	02182026	7,099	ACCT #A2JXVCVZU4S49M MONARCH GRANT/PROJECT
AMAZON CAPITAL SERVI	255511 548002	MATERIALS - ALL CATEGORIES	33.92	02182026	7,099	ACCT #A2JXVCVZU4S49M MAT. PURCH - MOVIE GEEK BOXES
AMAZON CAPITAL SERVI	255511 548002	MATERIALS - ALL CATEGORIES	171.58	02182026	7,099	ACCT #A2JXVCVZU4S49M MATERIAL PURCHASE
AMAZON CAPITAL SERVI	255511 548002	MATERIALS - ALL CATEGORIES	3.26	02182026	7,099	ACCT #A2JXVCVZU4S49M COLLECTION SUPPLIES
AMAZON CAPITAL SERVI	255511 548002	MATERIALS - ALL CATEGORIES	37.66	02182026	7,099	ACCT #A2JXVCVZU4S49M MATERIAL PURCHASE
AMAZON CAPITAL SERVI	255511 548002	MATERIALS - ALL CATEGORIES	208.80	02182026	7,099	ACCT #A2JXVCVZU4S49M MATERIAL PURCHASE
AMAZON CAPITAL SERVI	255511 548002	MATERIALS - ALL CATEGORIES	16.50	02182026	7,099	ACCT #A2JXVCVZU4S49M MONARCH GRANT/PROJECT
AMAZON CAPITAL SERVI	255511 548002	MATERIALS - ALL CATEGORIES	13.75	02182026	7,099	ACCT #A2JXVCVZU4S49M MONARCH GRANT/PROJECT
AMAZON CAPITAL SERVI	255511 548002	MATERIALS - ALL CATEGORIES	6.61	02182026	7,099	ACCT #A2JXVCVZU4S49M MATERIAL PURCHASE
AMAZON CAPITAL SERVI	255511 548002	MATERIALS - ALL CATEGORIES	39.98	02182026	7,099	ACCT #A2JXVCVZU4S49M EXP. COLLECTION SUPPLIES
AMAZON CAPITAL SERVI	255511 548002	MATERIALS - ALL CATEGORIES	8.05	02182026	7,099	ACCT #A2JXVCVZU4S49M MATERIAL PURCHASE
AMAZON CAPITAL SERVI	255511 548002	MATERIALS - ALL CATEGORIES	143.19	02182026	7,099	ACCT #A2JXVCVZU4S49M MOVIE GEEK BOXES
BED BUG HEAT DOCTOR	255511 548002	MATERIALS - ALL CATEGORIES	2,199.00	02182026	370,629	COLLECTION SUPPLIES - MEAD PUBLIC LIBRARY
MIDWEST TAPE	255511 548003	OTHER CONTENT	428.17	02182026	7,134	CUST #2000014274 OTHER CONTENT
BLOOMSBURY PUBLISHIN	255511 548003	OTHER CONTENT	2,528.00	02182026	7,104	SUBSCRIPTION RENEWAL JAN - DEC 2026

*Mead Public Library - Accounts Payable February 1st, 2026 through February 28th, 2026*

VENDOR NAME	ACCOUNT	ACCOUNT DESC	AMOUNT	WARRANT	CHECK NO	FULL DESC
SHEBOYGAN WATER UTIL	255511 555100	UTILITIES	891.05	022826DD	371,161	JANUARY WATER BILLING
ALLIANT ENERGY	255511 555100	UTILITIES	6,883.19	022826DD	371,156	JANUARY BILLING-ACCT #5498700000
WISCONSIN PUBLIC SER	255511 555100	UTILITIES	6,617.91	022326DD	371,176	JAN WPS BILLING-ACCT #0403257315-00031
AMAZON CAPITAL SERVI	255511 560255	TOOLS & SMALL EQUIPMENT	49.47	02182026	7,099	ACCT #A2JXVCVZU4S49M EXTENSION CABLES - MEAD
ELITE BUILDS INC	255511 631200	BUILDING IMPROVEMENTS	9,690.10	02182026	7,113	INTERIOR IMPROVEMENTS TO MPL APPLICATION 3
AMAZON CAPITAL SERVI	255511 652200	IT EQUIPMENT	3,717.00	02182026	7,099	ACCT #A2JXVCVZU4S49M GAMING DESKTOP-MEAD
AMAZON CAPITAL SERVI	255511 652200	IT EQUIPMENT	1,468.31	02182026	7,099	ACCT #A2JXVCVZU4S49M TONER CARTRIDGES - MEAD
AMAZON CAPITAL SERVI	255511 652200	IT EQUIPMENT	597.00	02182026	7,099	ACCT #A2JXVCVZU4S49M DVD PLAYER & IPAD - MEAD
AMAZON CAPITAL SERVI	255511 652200	IT EQUIPMENT	675.00	02182026	7,099	ACCT #A2JXVCVZU4S49M MICROPHONES - MEAD
AMAZON CAPITAL SERVI	255511 652200	IT EQUIPMENT	1,176.11	02182026	7,099	ACCT #A2JXVCVZU4S49M GAMING DESKTOP - MEAD
AMAZON CAPITAL SERVI	255511 652200	IT EQUIPMENT	1,229.99	02182026	7,099	ACCT #A2JXVCVZU4S49M GAMING DESKTOP - MEAD

*Mead Public Library - Accounts Payable March 1st, 2026 through March 31st, 2026*

VENDOR NAME	ACCOUNT	ACCOUNT DESC	AMOUNT	WARRANT	CHECK NO	FULL DESC
HAL SPECHT II	255 451915	PATRON FEES	11.29	03182026	371,055	PATRON REFUND FOR LILLYANNE SPECHT
AT&T CORP	255511 531100	CONTRACTED SERVICES	90.74	03182026	370,986	ACCT #831-001-4630 820 FEB BILLING MPL BROADBAND
JAMES LEASING	255511 531100	CONTRACTED SERVICES	139.55	03182026	371,028	ACCT #MP15 KONICA STAPLES - MEAD PUBLIC LIBRARY
JAMES LEASING	255511 531100	CONTRACTED SERVICES	1,379.00	03182026	371,028	ACCT #MP15 XM CLOUD PREPAID CREDITS
ENGBERG ANDERSON INC	255511 531100	CONTRACTED SERVICES	425.00	03182026	371,006	MEAD PL INTERIOR & AMH RENO - PROJ # 213396.02
JILL A DOERING	255511 531100	CONTRACTED SERVICES	320.00	03182026	371,030	INTERPRETING TAX APPT - MEAD PUBLIC LIBRARY
AT&T	255511 531100	CONTRACTED SERVICES	414.89	03182026	370,985	ACCT#920 Z83-0200 109 8 FEB TELEPHONE EXPENSE
WILS	255511 531100	CONTRACTED SERVICES	1,800.00	03182026	371,107	CUST #MEADP010 - 2026 CITY LIBRARY COLLECTIVE
AMAZON CAPITAL SERVI	255511 531800	PROGRAM SERVICES	64.77	03042026	7,156	ACCT #A2JXVCVZU4S49M PROGRAM EXPENSE
AMAZON CAPITAL SERVI	255511 531800	PROGRAM SERVICES	39.99	03182026	7,200	ACCT #A2JXVCVZU4S49M PROGRAMMING
AMAZON CAPITAL SERVI	255511 531800	PROGRAM SERVICES	45.58	03182026	7,200	ACCT #A2JXVCVZU4S49M PROGRAMMING
AMAZON CAPITAL SERVI	255511 531800	PROGRAM SERVICES	287.72	03182026	7,200	ACCT #A2JXVCVZU4S49M PROGRAM EXPENSE
AMAZON CAPITAL SERVI	255511 531800	PROGRAM SERVICES	19.98	03182026	7,200	ACCT #A2JXVCVZU4S49M PROGRAMMING
AMAZON CAPITAL SERVI	255511 531800	PROGRAM SERVICES	27.89	03182026	7,200	ACCT #A2JXVCVZU4S49M PROGRAM EXPENSE
AMAZON CAPITAL SERVI	255511 531800	PROGRAM SERVICES	25.79	03182026	7,200	ACCT #A2JXVCVZU4S49M PROGRAMMING
AMAZON CAPITAL SERVI	255511 531800	PROGRAM SERVICES	191.52	03182026	7,200	ACCT #A2JXVCVZU4S49M PROGRAM EXPENSE
AMAZON CAPITAL SERVI	255511 531800	PROGRAM SERVICES	23.98	03182026	7,200	ACCT #A2JXVCVZU4S49M PROGRAM EXPENSE
AMAZON CAPITAL SERVI	255511 531800	PROGRAM SERVICES	21.84	03182026	7,200	ACCT #A2JXVCVZU4S49M PROGRAM EXPENSE
AMAZON CAPITAL SERVI	255511 531800	PROGRAM SERVICES	165.21	03182026	7,200	ACCT #A2JXVCVZU4S49M PROGRAM EXPENSE
AMAZON CAPITAL SERVI	255511 531800	PROGRAM SERVICES	44.37	03182026	7,200	ACCT #A2JXVCVZU4S49M PROGRAM EXPENSE
AMAZON CAPITAL SERVI	255511 531800	PROGRAM SERVICES	107.53	03182026	7,200	ACCT #A2JXVCVZU4S49M PROGRAM EXPENSE
LINDSEY JOCHMAN	255511 531800	PROGRAM SERVICES	318.46	03042026	370,845	JAN LIBRARY AQUARIUM SERVICES - MPL
ORANGEBOY	255511 533106	SOFTWARE MAINT & SUBSCRIPTIONS	15,500.00	03182026	7,242	CARNEGIE GRANT/SOFTWARE SUBSCRIPTION 3/2/26-3/2/27
WINDING RIVERS LIB	255511 536125	EMPLOYEE DEVELOPMENT	100.00	03182026	371,108	SRLAAW MEMBERSHIP 2026 - MEAD PUBLIC LIBRARY
AMAZON CAPITAL SERVI	255511 540100	OFFICE SUPPLIES	95.72	03182026	7,200	ACCT #A2JXVCVZU4S49M OFFICE SUPPLIES
AMAZON CAPITAL SERVI	255511 540100	OFFICE SUPPLIES	77.60	03182026	7,200	ACCT #A2JXVCVZU4S49M OFFICE SUPPLIES
AMAZON CAPITAL SERVI	255511 540100	OFFICE SUPPLIES	336.72	03182026	7,200	ACCT #A2JXVCVZU4S49M OFFICE SUPPLIES
PITNEY BOWES GLOBAL	255511 540130	POSTAGE & DELIVERY	2,000.00	03042026	370,876	RESERVE ACCT # 30097430 MARCH 2026
PITNEY BOWES GLOBAL	255511 540130	POSTAGE & DELIVERY	322.02	03182026	371,065	ACCT #0013152143 RED INK CTDG-POSTAGE
IMAGINE VIDEO PROD	255511 548001	DONATION PURCHASES	350.00	03182026	371,024	FOUNDATION WISHLIST-PROGRAMMING-ORDINARY PEOPLE
METTER-JENSEN, L	255511 548001	DONATION PURCHASES	150.00	03042026	370,851	FOUNDATION WISHLIST-PROGRAMMING-NON-FICTION GROUP
DISCOVERY COACH	255511 548001	DONATION PURCHASES	85.50	03182026	371,003	BUSING KIDS-EARLY LEARNING CENTER TO MEAD 1/20/26
DISCOVERY COACH	255511 548001	DONATION PURCHASES	85.50	03182026	371,003	BUSING KIDS-EARLY LEARNING CENTER TO MEAD 02/24/26
DISCOVERY COACH	255511 548001	DONATION PURCHASES	85.50	03182026	371,003	BUSING KIDS-EARLY LEARNING CENTER TO MEAD 02/10/26
DISCOVERY COACH	255511 548001	DONATION PURCHASES	85.50	03182026	371,003	BUSING KIDS-EARLY LEARNING CENTER TO MEAD 02/10/26
DISCOVERY COACH	255511 548001	DONATION PURCHASES	85.50	03182026	371,003	BUSING KIDS-EARLY LEARNING CENTER TO MEAD 01/20/26
DISCOVERY COACH	255511 548001	DONATION PURCHASES	85.50	03182026	371,003	BUSING KIDS-EARLY LEARNING CENTER TO MEAD 02/24/26
DISCOVERY COACH	255511 548001	DONATION PURCHASES	171.00	03042026	370,817	BUSING KIDS-EARLY LEARNING CENTER TO MEAD 1/13/26
DOLL, JON W.	255511 548001	DONATION PURCHASES	200.00	03042026	370,819	FOUNDATION WISHLIST-PROGRAMMING-WINTERGREEN
MIND, SOUL AND SELF	255511 548001	DONATION PURCHASES	1,050.00	03042026	7,188	FOUNDATION WISHLIST-PROGRAMMING-GARDENING

*Mead Public Library - Accounts Payable March 1st, 2026 through March 31st, 2026*

VENDOR NAME	ACCOUNT	ACCOUNT DESC	AMOUNT	WARRANT	CHECK NO	FULL DESC
HOPEFULLY HOMESTEAD	255511 548001	DONATION PURCHASES	200.00	03182026	371,022	MILLIPORE SIGMA GRANT-WINTERGREEN 03.21.26
AMAZON CAPITAL SERVI	255511 548001	DONATION PURCHASES	335.99	03182026	7,200	ACCT #A2JXVCVZU4S49M-FOUNDATION WISHLIST/BOEHLKE
AMAZON CAPITAL SERVI	255511 548001	DONATION PURCHASES	349.32	03182026	7,200	ACCT #A2JXVCVZU4S49M MILLIPORE SIGMA GRANT
AMAZON CAPITAL SERVI	255511 548001	DONATION PURCHASES	24.99	03182026	7,200	ACCT #A2JXVCVZU4S49M MILLIPORE SIGMA GRANT
AMAZON CAPITAL SERVI	255511 548001	DONATION PURCHASES	28.49	03182026	7,200	ACCT #A2JXVCVZU4S49M MILLIPORE SIGMA GRANT
AMAZON CAPITAL SERVI	255511 548001	DONATION PURCHASES	465.16	03182026	7,200	ACCT #A2JXVCVZU4S49M MILLIPORE SIGMA GRANT
AMAZON CAPITAL SERVI	255511 548001	DONATION PURCHASES	588.17	03182026	7,200	ACCT #A2JXVCVZU4S49M READY SET PRE-K GRANT
AMAZON CAPITAL SERVI	255511 548001	DONATION PURCHASES	119.87	03182026	7,200	ACCT #A2JXVCVZU4S49M READY SET PRE-K KOHLER GRANT
ELAINE JACKS	255511 548001	DONATION PURCHASES	1,800.00	03042026	370,822	FOUNDATION WISHLIST-PROGRAMMING-SEWING CLASSES
MARCIA ZINK	255511 548001	DONATION PURCHASES	400.00	03042026	370,847	FOUNDATION WISHLIST-PROGRAMMING-MAR/APR 2026
WORLDWIDE DRAGON	255511 548001	DONATION PURCHASES	700.00	03182026	371,112	FOUNDATION WISHLIST-PROG./MILLIPORE SIGMA- 2026
ADRIENNE ALLEN	255511 548001	DONATION PURCHASES	400.00	03042026	370,795	FOUNDATION WISHLIST-PROGRAMMING-03.14.26 QUILTING
NANCY TESELLE	255511 548001	DONATION PURCHASES	150.00	03042026	370,859	FOUNDATION WISHLIST-PROGRAMMING-MAYWOOD BOOK CLUB
KIDS ON CANVAS	255511 548001	DONATION PURCHASES	650.00	03182026	371,032	FOUNDATION WISHLIST-PROGRAMMING-2026 KIDS ON CANVA
MILWAUKEE BALLET CO	255511 548001	DONATION PURCHASES	165.00	03042026	370,856	FOUNDATION WISHLIST-PROGRAMMING-11/14/26 WORKHOP
JACQUELINE KOTYZA	255511 548001	DONATION PURCHASES	100.00	03182026	371,026	MILLIPORE SIGMA GRANT - WINTERGREEN 03.21.26
ANNELIESE FINKE	255511 548001	DONATION PURCHASES	300.00	03042026	370,797	FOUNDATION WISHLIST-PROGRAMING-POET LAUREATE
MEGAN NASGOVITZ	255511 548001	DONATION PURCHASES	100.00	03042026	370,850	MILLIPORE SIGMA GRANT-WINTERGREEN YOGA BASICS
MICHELLE HACKETT	255511 548001	DONATION PURCHASES	425.00	03042026	370,852	RODNEY PRINSEN FUND-PROGRAMMING-BUBBLE BASH
MIDWEST TAPE	255511 548002	MATERIALS - ALL CATEGORIES	118.82	03042026	7,187	CUST #2000016317 MONARCH GRANT/PROJECT
MIDWEST TAPE	255511 548002	MATERIALS - ALL CATEGORIES	1,202.40	03182026	7,237	CUST #2000015656 MATERIAL PURCHASE
MIDWEST TAPE	255511 548002	MATERIALS - ALL CATEGORIES	25.58	03182026	7,237	CUST #2000016317 MONARCH GRANT/PROJECT FUND
MIDWEST TAPE	255511 548002	MATERIALS - ALL CATEGORIES	139.15	03182026	7,237	ACCT #2000016317 MONARCH GRANT/PROJECT
MIDWEST TAPE	255511 548002	MATERIALS - ALL CATEGORIES	1,014.30	03182026	7,237	ACCT #2000015656 MATERIAL PURCHASE
INGRAM LIBRARY SERV	255511 548002	MATERIALS - ALL CATEGORIES	1,196.30	03182026	7,228	ACCT #20W8082 MATERIAL PURCHASE
INGRAM LIBRARY SERV	255511 548002	MATERIALS - ALL CATEGORIES	516.66	03182026	7,228	ACCT #A2JXVCVZU4S49M MATERIAL PURCHASE
INGRAM LIBRARY SERV	255511 548002	MATERIALS - ALL CATEGORIES	20.10	03182026	7,228	ACCT #20W8082 MATERIAL PURCHASE
INGRAM LIBRARY SERV	255511 548002	MATERIALS - ALL CATEGORIES	12.78	03182026	7,228	ACCT #A2JXVCVZU4S49M MATERIAL PURCHASE
INGRAM LIBRARY SERV	255511 548002	MATERIALS - ALL CATEGORIES	1,051.80	03182026	7,228	ACCT #A2JXVCVZU4S49M MATERIAL PURCHASE
INGRAM LIBRARY SERV	255511 548002	MATERIALS - ALL CATEGORIES	71.95	03182026	7,228	ACCT #20W8082 MATERIAL PURCHASE
INGRAM LIBRARY SERV	255511 548002	MATERIALS - ALL CATEGORIES	329.15	03182026	7,228	ACCT #20W1532 MATERIAL PURCHASE
INGRAM LIBRARY SERV	255511 548002	MATERIALS - ALL CATEGORIES	88.68	03182026	7,228	ACCT #20X7192 MONARCH GRANT/PROJECT FUND
INGRAM LIBRARY SERV	255511 548002	MATERIALS - ALL CATEGORIES	410.67	03182026	7,228	ACCT #20W1532 MATERIAL PURCHASE
INGRAM LIBRARY SERV	255511 548002	MATERIALS - ALL CATEGORIES	691.05	03182026	7,228	ACCT #20W8082 MATERIAL PURCHASE
AMAZON CAPITAL SERVI	255511 548002	MATERIALS - ALL CATEGORIES	347.85	03182026	7,200	ACCT #A2JXVCVZU4S49M MATERIAL PURCHASE
AMAZON CAPITAL SERVI	255511 548002	MATERIALS - ALL CATEGORIES	4.88	03182026	7,200	ACCT #A2JXVCVZU4S49M COLLECTION SUPPLIES
AMAZON CAPITAL SERVI	255511 548002	MATERIALS - ALL CATEGORIES	523.25	03182026	7,200	ACCT #A2JXVCVZU4S49M COLLECTION SUPPLIES
AMAZON CAPITAL SERVI	255511 548002	MATERIALS - ALL CATEGORIES	27.96	03182026	7,200	ACCT #A2JXVCVZU4S49M MONARCH GRANT/PROJECT
AMAZON CAPITAL SERVI	255511 548002	MATERIALS - ALL CATEGORIES	17.24	03182026	7,200	ACCT #A2JXVCVZU4S49M MATERIAL PURCHASE
BERTELSMANN PUBLISH	255511 548002	MATERIALS - ALL CATEGORIES	145.98	03182026	370,992	SALES ORDER #484938 - MEAD PUBLIC LIBRARY

*Mead Public Library - Accounts Payable March 1st, 2026 through March 31st, 2026*

VENDOR NAME	ACCOUNT	ACCOUNT DESC	AMOUNT	WARRANT	CHECK NO	FULL DESC
STATE BAR OF WISCONS	255511 548002	MATERIALS - ALL CATEGORIES	96.50	03182026	371,084	ACCT #12587 JUDICIAL BENCHBOOK
SALEM PRESS PRODUCT	255511 548002	MATERIALS - ALL CATEGORIES	260.05	03182026	7,247	CUST #1011364 STANDING ORDERS - GUIDE
MIDWEST TAPE	255511 548003	OTHER CONTENT	83.99	03182026	7,237	CUST #2000014274 OTHER CONTENT
MIDWEST TAPE	255511 548003	OTHER CONTENT	474.46	03182026	7,237	CUST #2000014274 OTHER CONTENT
MANGO LANGUAGES	255511 548003	OTHER CONTENT	3,950.00	03182026	371,041	SUBSCRIPTION- MANGO CONVERSATIONS 3/1/26-02/28/27
MANGO LANGUAGES	255511 548003	OTHER CONTENT	524.50	03182026	371,041	SUBSCRIPTION LITTLE PIM 3/1/26-2/28/27
MANGO LANGUAGES	255511 548003	OTHER CONTENT	524.50	03182026	371,041	SUBSCRIPTION INSIDE LIBRARY - 03/01/26-2/28/27
ALLIANT ENERGY	255511 555100	UTILITIES	6,678.90	033126DD	371,447	FEBRUARY BILLING-ACCT #5498700000
WISCONSIN PUBLIC SER	255511 555100	UTILITIES	6,511.05	033126DD	371,456	FEBRUARY BILLING-ACCT #0403257315-00031
AMAZON CAPITAL SERVI	255511 560255	TOOLS & SMALL EQUIPMENT	464.03	03042026	7,156	ACCT #A2JXVCVZU4S49M CABLES & NETWORK SVCS-LIB
ELITE BUILDS INC	255511 631200	BUILDING IMPROVEMENTS	43,533.45	03182026	7,218	INTERIOR IMPROVEMENTS TO MEAD PUBLIC LIBRARY IN AC
CDWG	255511 652200	IT EQUIPMENT	1,120.08	03182026	370,996	CUST #3162682 YOGA 7 2 IN 1 - IT EQUIPMENT
CDWG	255511 652200	IT EQUIPMENT	1,202.98	03042026	370,808	CUST #3162682 CISCO CATALYST - IT EQUIPMENT MEAD
CDWG	255511 652200	IT EQUIPMENT	409.81	03182026	370,996	CUST #3162682 LABEL PRINTER & LABELS - MEAD
CDWG	255511 652200	IT EQUIPMENT	133.26	03182026	370,996	CUST #3162682 SELF-LAMINATING LABELS - MEAD
CDWG	255511 652200	IT EQUIPMENT	65.04	03182026	370,996	CUST #3162682 PROLINE CISCO - IT EQUIPMENT - MEAD
CDWG	255511 652200	IT EQUIPMENT	115.04	03042026	370,808	CUST #3162682 NETGEAR 5-PORT ETHERNET - MEAD
CDWG	255511 652200	IT EQUIPMENT	405.52	03182026	370,996	CUST #3162682 SURVEILLANCE CAMERA - MEAD
CDWG	255511 652200	IT EQUIPMENT	8,642.16	03042026	370,808	CUST #3162682 SURVEILLANCE CAMERAS - MEAD
CDWG	255511 652200	IT EQUIPMENT	312.26	03042026	370,808	CUST #3162682 LED MONITOR AND CABLE - MEAD
CDWG	255511 652200	IT EQUIPMENT	811.04	03042026	370,808	CUST #3162682 SURVEILLANCE CAMERA
CDWG	255511 652200	IT EQUIPMENT	463.42	03042026	370,808	CUST #3162682 BARCODE SCANNER
AMAZON CAPITAL SERVI	255511 652200	IT EQUIPMENT	427.96	03042026	7,156	ACCT #A2JXVCVZU4S49M IT CABLE - LIBRARY
AMAZON CAPITAL SERVI	255511 652200	IT EQUIPMENT	359.98	03042026	7,156	ACCT #A2JXVCVZU4S49M BARCODE SCANNER



MEAD LIBRARY

Mead Public Library Art & Object Collection Donation Application

Procedure Checklist for Donated Artwork and Objects Proposals

Donor Information

Donor Name: Maria Alfaro

Donor Telephone: \_\_\_\_\_

Donor Email: \_\_\_\_\_

Donor Mailing Address: \_\_\_\_\_

Donation Information

Artwork, Object, or Collection Name: Petri-dish

Description of the Donation: Large woodcut relief print with a little girl and multiple animals -

Subject: animals, plants, people

Type (painting, drawing, sculpture, etc.): Wood cut

Size/ Dimensions: 48" x 48"

Artist/ Creator: Maria Alfaro

Date Completed: Oct 28, 2020

Materials/ mediums: wood panel, pg

Appraisal/ Purchase Amount (if applicable): \$500



**MEAD LIBRARY**

**Provenance: Please supply images and the known history of the donation being considered as additional documentation.**

Installation Requirements (pedestal, supports, etc.): 2 nails

Maintenance/ Upkeep Needs (polishing, protective coats, etc.) and estimated expense:

dusting

Reason for selecting Mead Public Library for this donation: Mead public library is a safe place, feels like home and we enjoy coming here often.

If accepted, the donor would like the following name(s) acknowledged:

María Alfaro

I have received a copy of Mead Public Library's Art Policy, and I have read, understand, and agree to Mead Public Library's terms and conditions should my donation be accepted. I also acknowledge that decisions on donation proposals may take time as the Library Director, the Library Board, and the Library Art Committee discuss them.

MA  
Donor's Initials



Title: <b>Code of Conduct</b> Chapter: <b>Miscellaneous</b> Approved By: <b>Library Board of Trustees</b>	Document Type: <b>Policy</b> Document Number: <b>14.01</b> Original Effective Date: Date of Last Revision: <b>4/15/2026</b>
-----------------------------------------------------------------------------------------------------------------	--------------------------------------------------------------------------------------------------------------------------------------

## Code of Conduct

### Introduction

This code of conduct will help you understand which behaviors are acceptable at the Library and which are unacceptable.

### The Library's Values

We welcome and serve everyone who comes to the Library, and hold ourselves to the highest standards as we provide resources and experiences that encourage curiosity, discovery, and lifelong learning.

We want you to feel safe and welcome at the Library, and we depend on you to follow Library rules so others can feel safe and welcome. People who do not follow the Library's rules may be asked to leave. People banned from the Library for more than 10 days can appeal that decision by calling the library at 920-459-3400 or contacting us online at <https://www.meadpl.org/contact>.

### Acceptable Behaviors at the Library:

- Asking questions: our staff are here to help you
- Showing respect to others: be kind to those around you and give people their space
- Keeping noise levels low: use your inside voice when talking and headphones while using cell phones, computers, and other devices
- Taking care of the Library and everything in it: handle books and other materials carefully, return borrowed materials on time. ~~eat only in the Library Café, and always clean up after yourself~~
- Requesting ADA accommodations
- ~~Bringing ADA defined service animals into the library~~
- Following library rules: The Library has policies that explain what is and is not allowed at the library. The policies also explain your rights at the library. You can read our policies online at <https://www.meadpl.org/policies>, or you can request specific policies in print at any service desk

### Unacceptable Behaviors at the Library:

- Breaking the law
- Bringing weapons into the Library
- Bringing drugs or alcohol into the Library
- Being drunk or under the influence of illegal drugs
- Smoking or vaping in the Library or within 25 ft. of the Library's doors
- ~~Being rude or abusive to people in the Library~~
- Stealing or damaging property that does not belong to you
- Asking people you don't know for money
- Coming to the Library when you are sick and contagious
- Leaving children under the age of 10 unattended

- Leaving your personal belongings unattended
- Creating a mess or tripping hazard with your personal belongings
- ~~Bringing pets or non-service animals into the library~~
- Not following Library rules <https://www.meadpl.org/policies>

### **Food & Beverages**

Small snack foods in closeable containers are allowed except when using library equipment or the children's play area. All other food is prohibited.

Nonalcoholic beverages in portable containers — such as travel mugs, screw-top bottles, and juice boxes — are allowed. Open containers, such as canned beverages, are prohibited.

### **Messes**

Please clean up after yourself and leave all areas as you found them. For messes that require additional attention, such as spills, please alert staff.

### **Building Access**

No loitering in and around the library entrance, and no blocking doorways, walkways or otherwise interfering with free passage throughout the building. Anyone remaining in the first-floor entrance areas for more than 10 minutes will be asked to move to a different area of the library.

Visitors may not remain in the library or attempt to remain in the library after regular business hours, unless taking part in an after-hours program or with prior permission of library administration

The Children's area is meant for children and their families. While the Children's collections are available to all, unaccompanied adults not using the collection may be asked to leave.

The Hanson and Maas Teen Centers are meant for teens. While the YA Collection is available to all, unaccompanied adults and children not using the collection may be asked to leave.

### **Use of Library Restrooms**

Visitors are not allowed to shave, bathe, dye or cut hair, wash clothes or dishes, smoke, vape, drink alcohol, or loiter in library restrooms. Restrooms will be checked periodically by staff.

### **Staff Only Areas**

Library visitors are not allowed to enter or attempt to enter any area of the building or grounds marked as restricted or for staff only.

### **Harassment & Disorderly Behavior:**

Harassment of library visitors or staff is prohibited. Harassment includes, but is not limited to:

- Verbal abuse, stalking, following or staring
- Unwanted physical contact or gesturing
- Any other behavior intended to annoy, disturb, threaten or intimidate

Disorderly behavior that disrupts other library visitors is prohibited. This includes but is not limited to:

- Using loud, abusive, profane, or offensive language
- Fighting or rough play
- Running

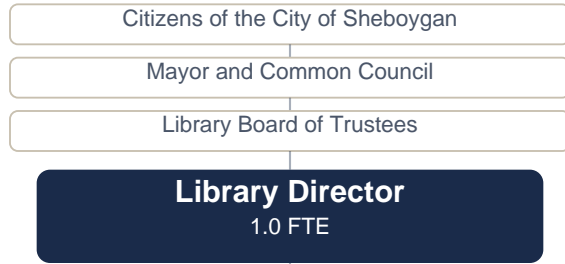
**Animals**

Animals are not allowed inside the library, with the exception of ADA-defined service animals and animals that are part of library-sponsored programs.

# Mead Public Library

City of Sheboygan

Item 22.



ADMINISTRATION	
Marketing Specialist	1.0
Admin. Assistant	1.0
IT Specialist	1.0
Headcount	3
<b>Total FTE</b>	<b>3.0</b>



CIRCULATION SERVICES	
Circ. Supervisor	1.0
Assoc. Librarian (vacant)	1.0
Library Asst.	5.5
Library Clerk	9.5
Headcount	21
<b>Total FTE</b>	<b>17.0</b>

ADULT SERVICES	
Librarian	4.0
Assoc. Librarian	2.0
Headcount	6
<b>Total FTE</b>	<b>6.0</b>

SECURITY SERVICES	
Public Safety Spec.	1.0
Security Monitor (vacant)	0.5
Headcount	2
<b>Total FTE</b>	<b>1.5</b>

TECHNICAL SERVICES	
Cataloger	3.0
Library Asst.	0.5
Headcount	4
<b>Total FTE</b>	<b>3.5</b>

YOUTH SERVICES	
Librarian	4.0
Assoc. Librarian	1.0
Library Asst.	2.0
Headcount	7
<b>Total FTE</b>	<b>7.0</b>

Organization summary

Team	Full-time		Part-time		Total	
	Count	FTE	Count	FTE	Count	FTE
Administration (incl. Director & Deputy Dir.)	5	5.0	—	—	5	5.0
Adult Services	6	6.0	—	—	6	6.0
Circulation Services (1 vacancy)	6	6.0	14	10.0	21	17.0
Security Services (1 vacancy)	1	1.0	1	0.5	2	1.5
Technical Services	3	3.0	1	0.5	4	3.5
Youth Services	7	7.0	—	—	7	7.0
<b>Organization total</b>	<b>28</b>	<b>28.0</b>	<b>16</b>	<b>11.0</b>	<b>45</b>	<b>40.0</b>

FTE based on scheduled hours (80 hrs = 1.0 FTE, 40 hrs = 0.5 FTE).

## Mead Library Board of Trustees 2026-2027 Meeting Schedule

### **2026**

June 17

July 15

August 19

September 16

October 21

November 18

December – No Meeting

### **2027**

January 20

February 17

March – No Meeting

April 21

May 19

**Date:** Meetings take place on the 3rd Wednesday of each month.

**Time:** 5:00 p.m.

**Location:** Rocca Room or (virtual) unless otherwise noted.