



**Saxman  
Master Plan Committee Meeting  
January 26, 2021  
4:00 PM**

## **AGENDA**

---

**Call to Order**

**Roll Call**

**Public Comment**

**Consideration of the Agenda**

**Old Business**

- [1.](#) Corvis Design Master Plan Drafts

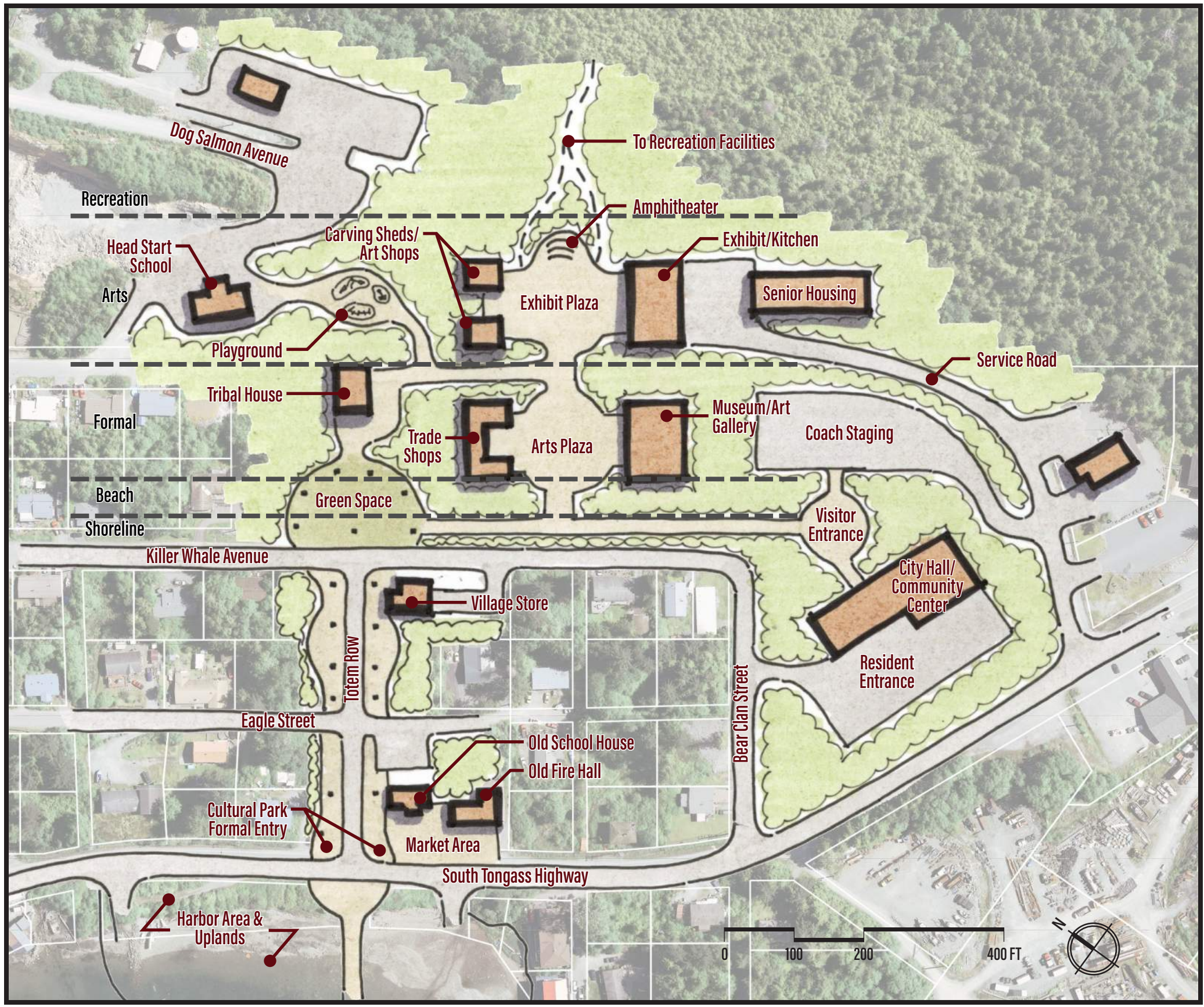
Background: Corvis Design presented Master Plan drafts in the last Regular Meeting. The Council wishes to discuss suggestions and changes in a committee meeting.

**New Business**

**Council Comments**

**Adjournment**

# CONCEPT 1: LAYERED



### Inspiration

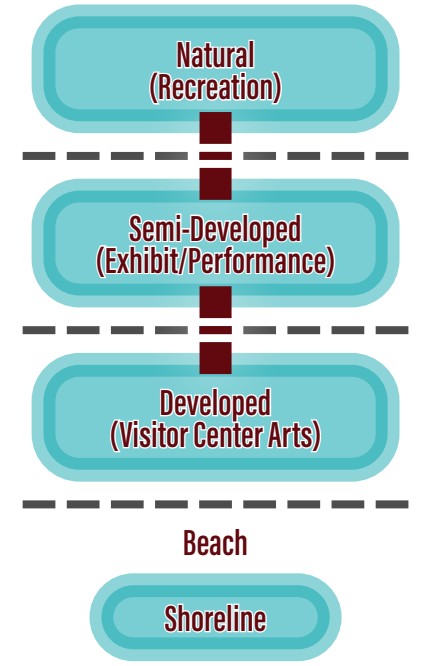
- A layered concept inspired by a traditional village layout with larger, more formal buildings located in a row along the shoreline or beach.
- Performance and exhibit facilities are located beyond these in the semi-developed area that blends with the natural environment.
- Visitors filter through the layers to explore the changing landscape.

### Opportunities/Constraints

- Pros
  - Strong connections
  - Separate visitor and resident entrances to the Community Center
  - Staging area for coaches and tours
  - Separates bus traffic from Totem Row
  - Connects the Head Start School with the Cultural Park and playground
- Cons
  - Requires relocating the Senior Housing and the Carving Shed
  - No separation between coach and tour staging
  - Disconnects Dog Salmon Avenue

### Amenities

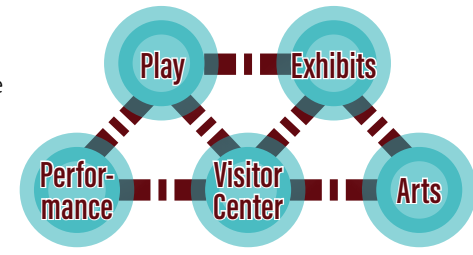
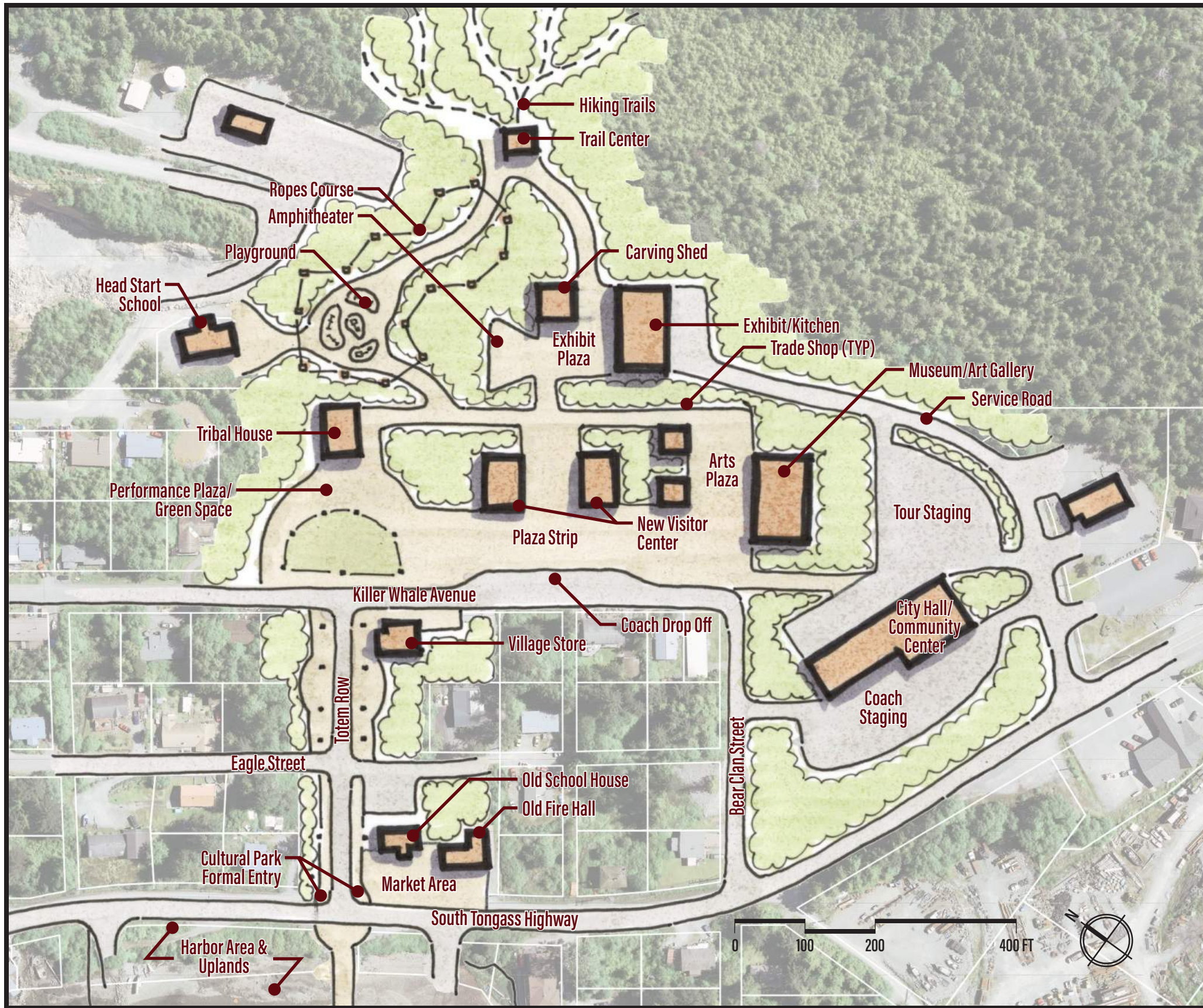
- Artists/makers workshops
- Amphitheater/outdoor performance space
- Exhibit/kitchen area to host food tours
- Market space
- Arts & culture museum
- Culturally themed playground



# SAXMAN CULTURAL PARK & HARBOR MASTER PLAN Cultural Park: Concept 1



## CONCEPT 2: SPOKE & HUB



### Inspiration

- Centralized formal entry point or a hub at the heart of the Cultural Park.
- New Visitor's Center located at the central hub.
- From the central area visitors will move out from the hub to the various activities

### Opportunities/Constraints

- Pros
  - Central area
  - Relocate the first point of contact away from the local Community Center
  - Separate tour and coach staging area
  - Strong entrance to the Cultural Park
  - Incorporates an outdoor performance space into the existing green space at the head of Totem Row
- Cons
  - Requires relocating the Senior Housing and the Carving Shed
  - Requires a new Visitor Center building
  - Disconnects Dog Salmon Avenue
  - Vehicle congestion along Totem Row

### Amenities

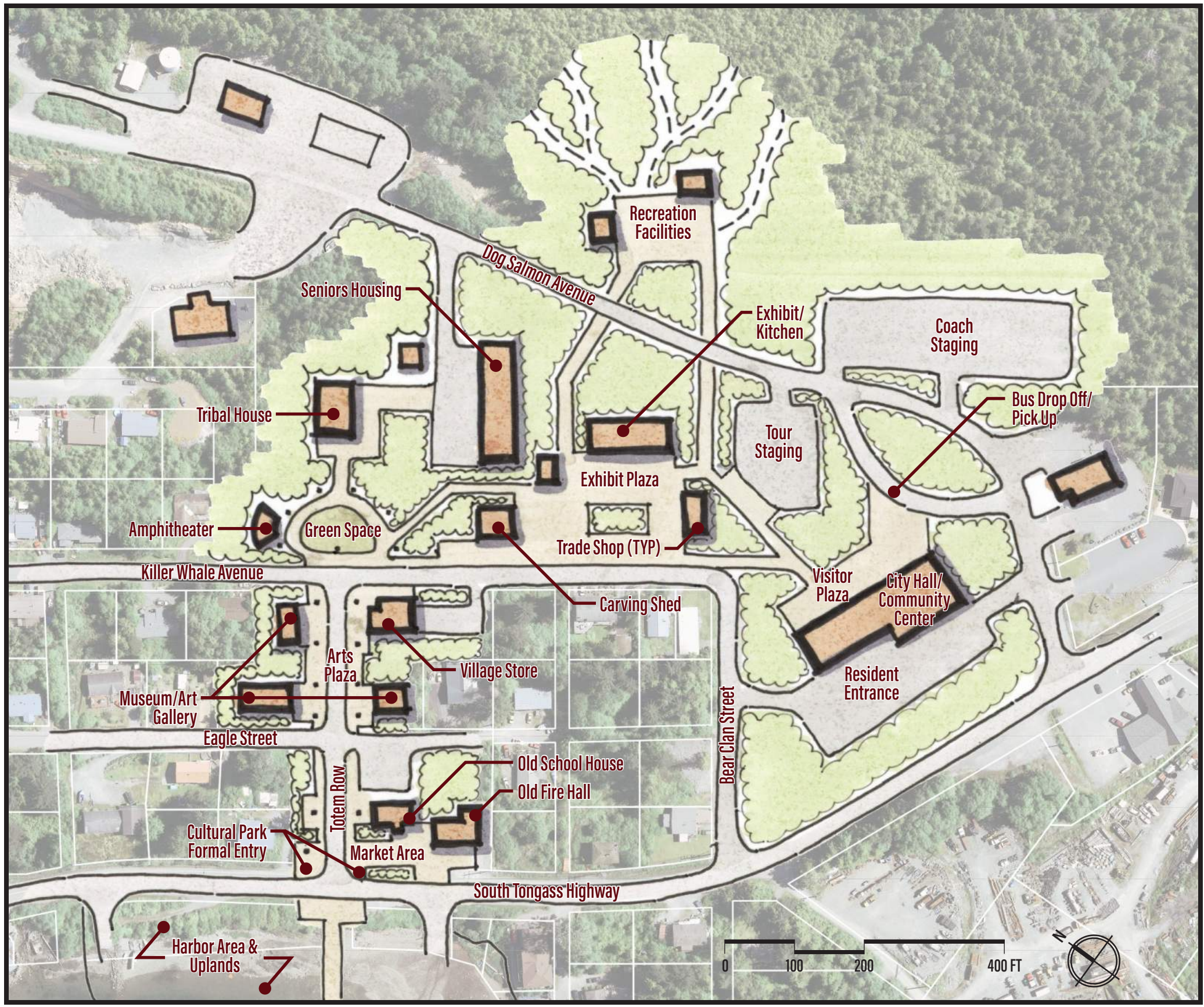
- Artists/makers workshops
- Amphitheater
- Outdoor performance space
- Exhibit/kitchen area to host food tours
- Market space
- Arts & culture museum
- Trail center and contact point
- Culturally themed playground
- Tree-based rope and adventure course



# SAXMAN CULTURAL PARK & HARBOR MASTER PLAN Cultural Park: Concept 2

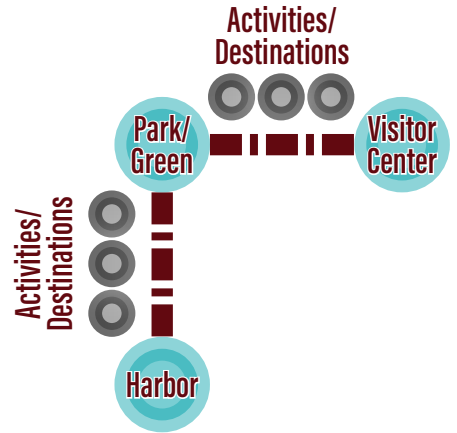


# CONCEPT 3: AXIS



### Inspiration

- The axis theme strengthens the pedestrian connections between the Harbor and the Cultural Park, meeting at the Tribal House.
- Activities are located along these connections similar to a pearl necklace, drawing a visitor along the connections and through the Cultural Park.



### Opportunities/Constraints

- Pros
  - Strong axis connection in the park
  - Separate tour and coach staging area
  - A visitor of the space goes on a journey between the connection points
  - Connects the outdoor performance space and amphitheater with the existing green space at the head of Totem Row
  - Senior Housing and Carving Shed remains in place
  - Maintains Dog Salmon Avenue
  - Separates bus traffic from Totem Row
- Cons
  - No connection between the Head Start School and the Cultural Park
  - Potential conflicts with properties along Totem Row to be developed with Museum/Art Gallery buildings

### Amenities

- Artists/makers workshops
- Amphitheater/outdoor performance space
- Exhibit/kitchen area to host food tours
- Market space
- Arts & culture museum
- Trail center and contact point

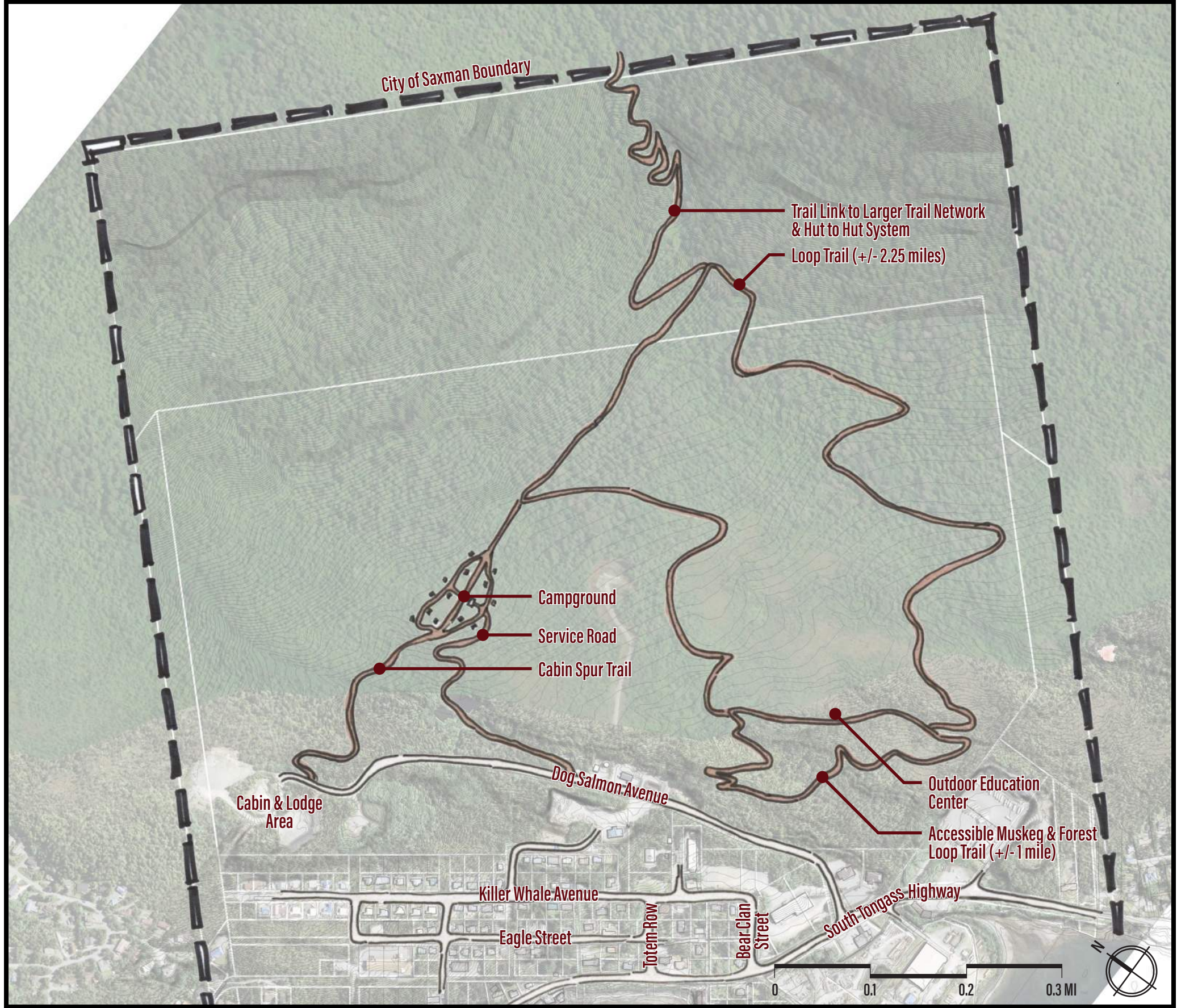


# SAXMAN CULTURAL PARK & HARBOR MASTER PLAN Cultural Park: Concept 3



January 19, 2021

# TRAILS & RECREATION



### Layout Description

- Looped system providing a variety of distances and challenges to the user.
- Highlights the local ecosystems with interpretive opportunities that can be developed for trail tours.
  - Trail tours can be self-led or offered as a guided tour with a group.
- Recreation center that connects with the Cultural Park
  - Trail loops that start from the Recreation Center
  - Spur trails that connect from the trail loops to important connection points (campground, cabin, and lodge area)
- The trails will range from accessible to more challenging and be hardened aggregate with boardwalks where required through wet environments.
- Long-range planning includes a spur trail to connect with a regional trail network and hut-to-hut camping amenities.
- Campground that includes 15 tent sites, vault toilets, and a day-use pavilion.
- Cabin & Lodge area (see next concept).

### Amenities

- Outdoor Education Center
- Cabin & lodge area
- Campground
- Looped trails for a variety of users
- Future regional trail connection opportunities



# SAXMAN CULTURAL PARK & HARBOR

## MASTER PLAN Recreational Park: Trails



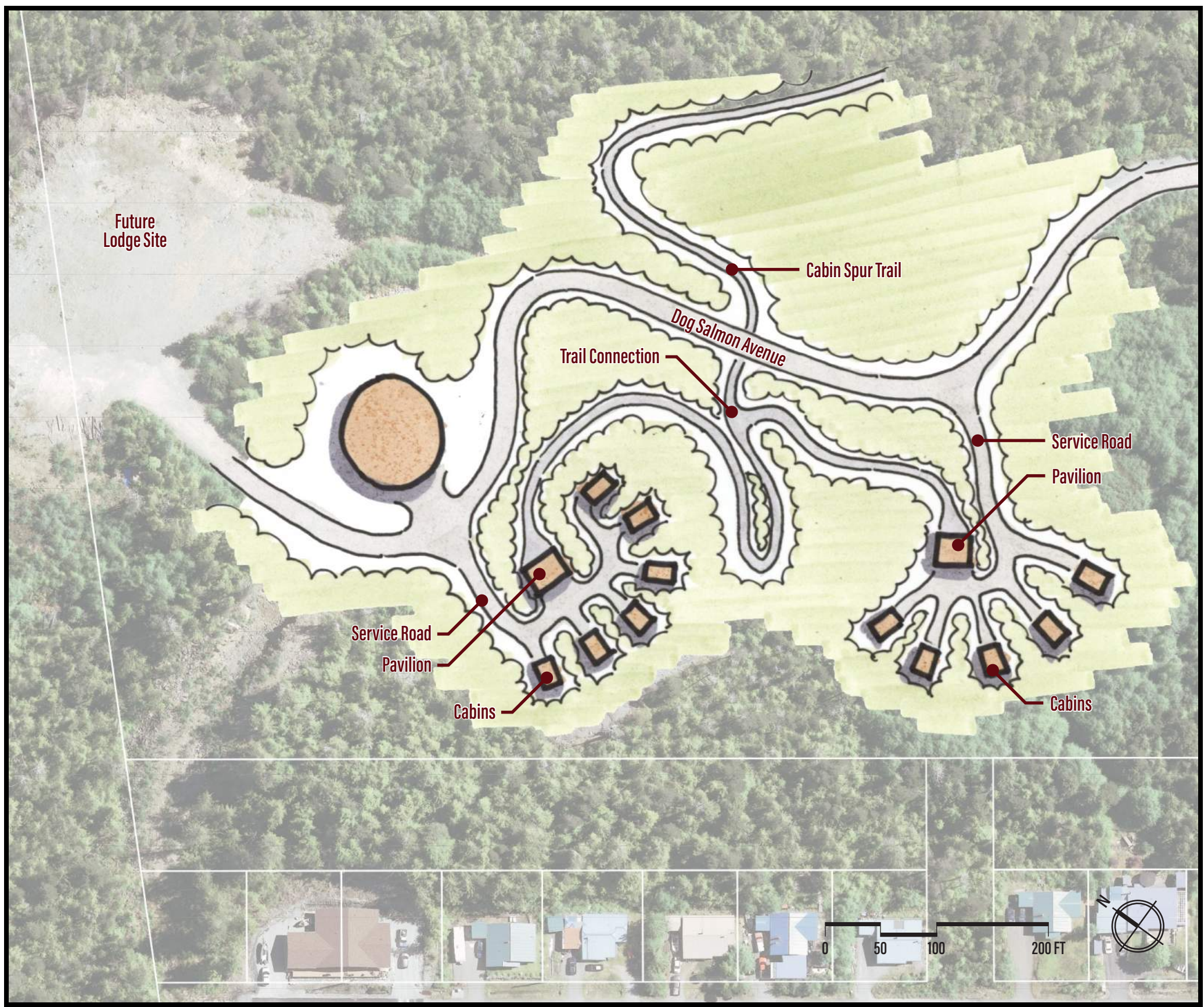
# RECREATION CABINS

## Layout Description

- Located away from the Cultural Park and Harbor activities in a quiet location that offers million dollar views.
- Clustered throughout a restored forest environment with a shared recreation space and linked connections to the hiking trails.
- Phased development to lower up-front costs.
- In the long-term, a space is provided for a future lodge site.

## Amenities

- Cabins
  - 16' x 26' (384 square feet)
  - Timber framed structures
  - Common living space, bathroom, and two bedrooms.
  - Propane for heating and cooking.
  - Connected to electricity.
- Shared recreation space
  - Day-use pavilion
  - Fire pit
  - Outdoor gathering space



# SAXMAN CULTURAL PARK & HARBOR MASTER PLAN Recreational Park: Cabins & Campground



# HARBOR CONCEPT 1



### Layout Description

- Breakwater/Wave Attenuator layout reflects recommendations of previous Wind/Wave analysis
  - (2) breakwater/wave attenuator floats
  - South breakwater/wave attenuator has dual purpose serving also as Drive-Down float w/ direct connection to the uplands area via vehicle/pedestrian access bridge
  - Cruise Ship/Yacht moorage float peripheral to harbor basin
    - Separate from majority of harbor users
    - Maximum maneuvering space for cruise ships
- Maximum harbor moorage w/ two pedestrian access gangways
  - Floats aligned with existing contours to avoid need for dredging
  - Headwalk float located along -20ft contour to allow access/usage at all tides
- Seaplane Facility incorporated into harbor float system – located far end of north mainwalk float
  - Provides wave protection while allowing for necessary space to maneuver

### Number of Moorage Slips

- Moorage Summary:
  - 60ft – 16
  - 40ft – 60
  - 24ft – 34
  - <20ft – 20
  - Yachts ~600 If transient moorage

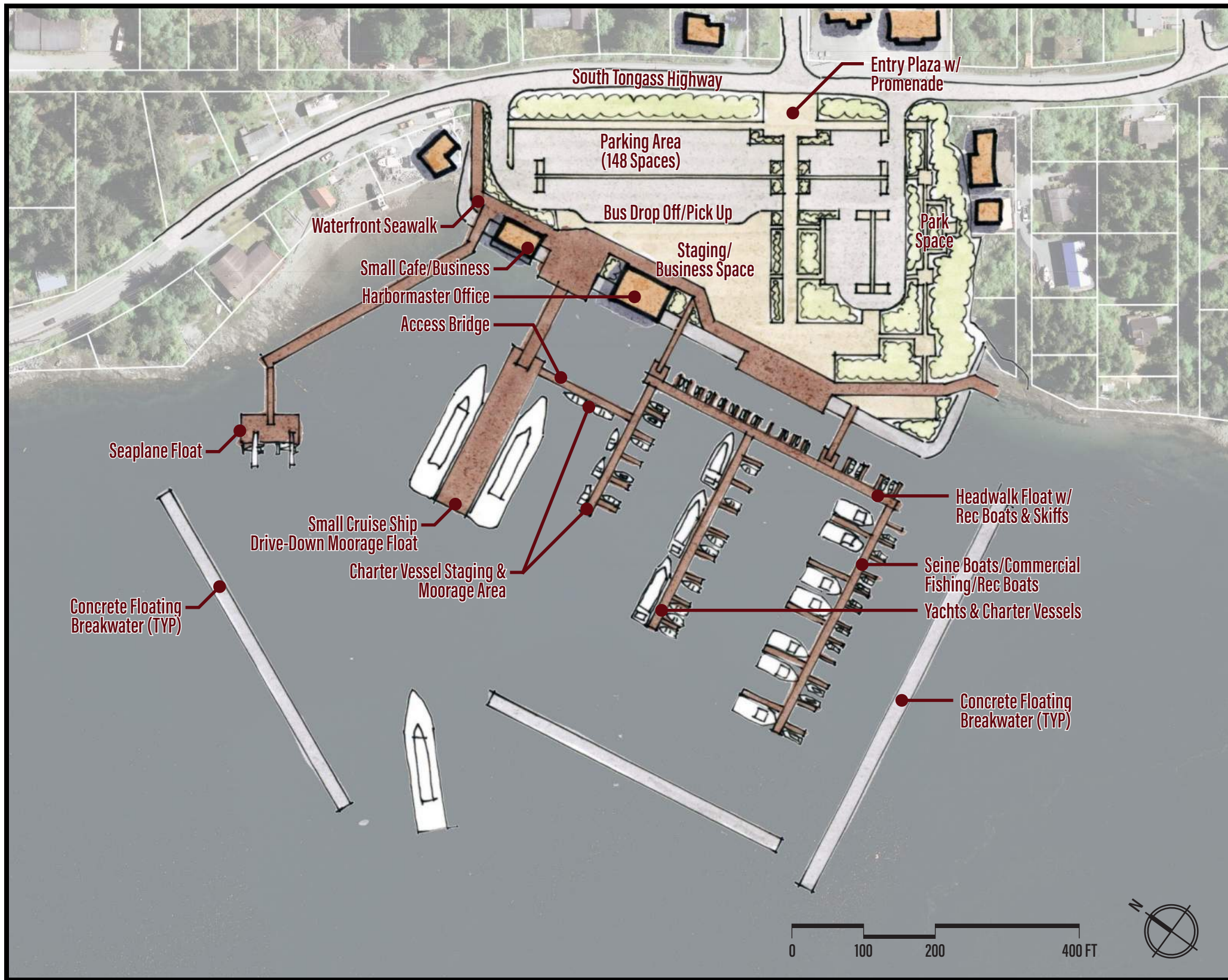
### Opportunities/Constraints

- Combined Cruise Ship and Drive-Down Float
  - Pros:
    - Cost savings
    - Cruise Ship/Yacht float and associated activities peripheral to harbor basin
    - Direct charter vessel access via moorage at Cruise Ship float
    - Combined use in summer but available between cruise ship dockings and year-round to locals
  - Cons:
    - Removal of existing rock pinnacle required due to navigation hazard (i.e. additional cost)
    - Potential conflicts w/ local/recreational and industry having combined-use facility
- Combined Seaplane float with moorage float system
  - Pros:
    - Cost savings
    - Combined use in summer but minimal use between cruise ship dockings and remainder of year
  - Cons:
    - Potential conflicts w/ local/recreational and industry having combined-use facility
- Option for alternate access or dual access to drive-down float via Bear Clan.



# SAXMAN CULTURAL PARK & HARBOR MASTER PLAN Harbor & Uplands: Concept 1





**Layout Description**

- Breakwater/Wave Attenuator layout reflects recommendations of previous Wind/Wave analysis
  - (3) breakwater/wave attenuator floats
  - Breakwater/wave attenuator layout to provide harbor protection but also adequate space for maneuvering of cruise ships in/out of harbor
- Dual purpose Cruise Ship/Yacht and Drive-Down float within harbor basin and direct connection to upland area via vehicle/pedestrian access bridge
- Float connection between Cruise Ship/Drive-down float and harbor float system for access to charter vessels
- Harbor moorage w/ two pedestrian access gangways
  - Floats aligned with existing contours to avoid need for dredging
  - Headwalk float located along -20ft contour to allow access/usage at all tides
- Seaplane Facility separate/peripheral to harbor float system but still inside breakwater/wave attenuator
  - Provides wave protection while allowing for necessary space to maneuver

**Number of Moorage Slips**

- Moorage Summary:
  - 60ft – 10
  - 40ft – 32; also ~ 300 If transient moorage
  - 24ft – 26
  - <20ft – 24
  - Yachts ~ 300 If transient moorage; also cruise ship float if available

**Opportunities/Constraints**

- Combined Cruise Ship and Drive-Down Float
  - Pros:
    - Cost savings
    - Combined use in summer but available between cruise ship dockings and year-round to locals
    - Direct access to harbor float system and charter vessels but still peripheral to local users
  - Cons:
    - Potential conflicts w/ local/recreational and industry having combined-use facility
- Seaplane Float Facility separate from harbor float system
  - Pros:
    - Separate access and peripheral to harbor basin and moorage floats
    - Maximum maneuvering space
  - Cons:
    - Additional cost
- Minimum Harbor Moorage due to need for large vessel maneuvering/navigation within harbor basin