



## CITY COUNCIL WORK SESSION MEETING

Tuesday, February 4<sup>th</sup>, 2025, at 5:30 PM  
City Hall Council Chambers and Online

### MINUTES

Mayor Olson called the meeting to order at 5:30 p.m.

#### ROLL CALL

Councilors present included Art Adcock, Brian Del Rosario, Travis Keel, Lynn Mecham, and Jeff Siddoway

Others present included City Manager Norm Beagley, Assistant City Manager Jason Bond, City Recorder Amalie Ottley, Legal Counsel Brett Rich, City Engineer Jon Lundell, Bruce Ward, Roger Pearson, Bart Leeflang, Caroline Openshaw, and Curtis Rowley.

#### PLEDGE OF ALLEGIANCE

Bruce Ward led the Pledge of Allegiance.

#### INVOCATION/INSPIRATIONAL THOUGHT

Roger Pearson offered an invocation.

#### DISCUSSION ITEMS

##### 1. Central Utah Water Conservancy District (CUWCD) Informational Presentation

Bruce Ward, Roger Pearson, and Bart Leeflang with the Central Utah Water Conservancy District attended the meeting to report to the City Council. They reported on the history of the Strawberry Valley Project that brought water to Utah County through Spanish Fork Canyon for irrigation purposes. They reported on current irrigation pipelines throughout the county that are serviced by the Strawberry Reservoir dam and the status of current and future pipeline projects. (See attached.)

##### 2. Cherry Hill Farms Trail Discussion

Curtis Rowley attended the meeting to discuss a proposed trail with the City Council. Mr. Rowley indicated that there have been concerns about residents walking through the orchards, especially with their pets as well as dirt bikes. He proposed that the city install a fenced trail along the orchard side near the railroad tracks on the north side of the city. City staff members and council members agreed to consider the proposal at a future work session to review what Mr. Rowley is envisioning and to work out details.

##### 3. Upcoming Agenda Items

Manager Beagley went over items on the upcoming Regular City Council meeting agenda.

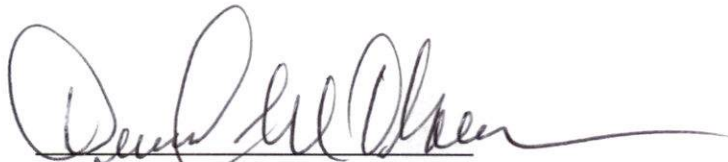
**ADJOURNMENT**

Councilor Mecham motioned to adjourn the Work Session Meeting. Councilor Del Rosario seconded the motion.

Councilor Adcock	Yes
Councilor Del Rosario	Yes
Councilor Keel	Yes
Councilor Mecham	Yes
Councilor Siddoway	Yes

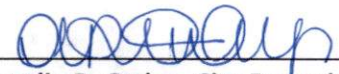
Motion passed unanimously.

The meeting was adjourned at 6:50 p.m.



**Daniel M. Olson, Mayor**

ATTEST:



**Amalie R. Ottley, City Recorder**

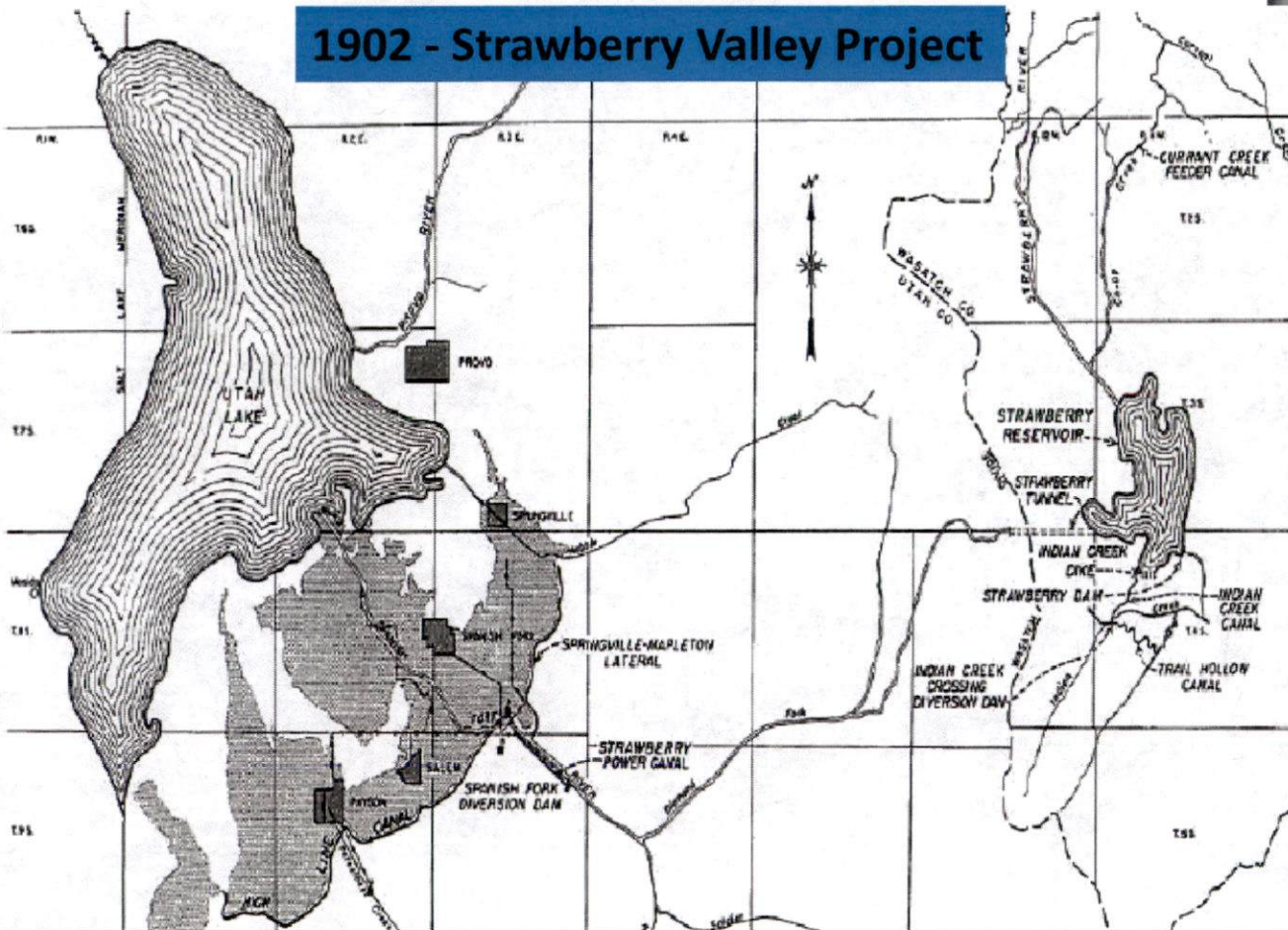
# Santaquin NWP Update

February 4, 2025



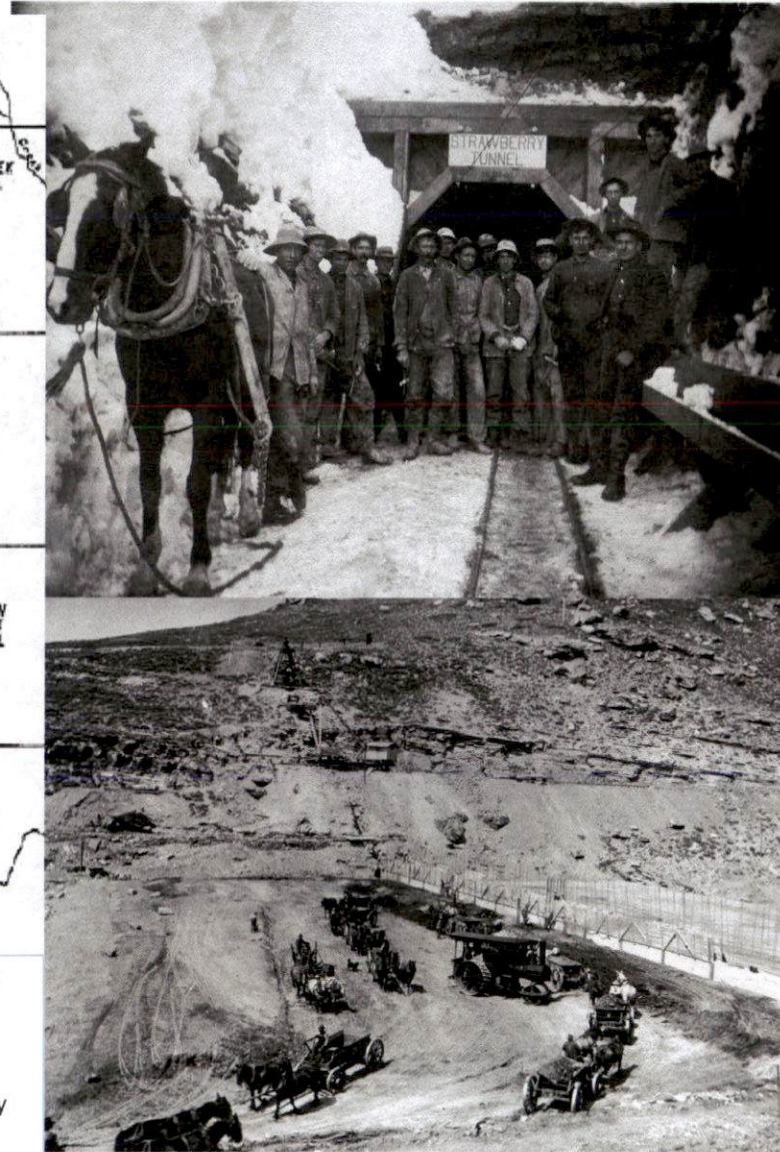
CENTRAL UTAH WATER  
CONSERVANCY DISTRICT

## 1902 - Strawberry Valley Project



In 1889 the people of Springville and Mapleton had formed a committee and petitioned the governor to "ascertain if the waters of Strawberry Creek, in Strawberry Valley, could be brought into Springville through Spanish Fork Canyon for Irrigation Purposes."

In 1902 with the passing of the Reclamation Act the Strawberry Valley Project was authorized to construct the Strawberry Reservoir and a tunnel to divert water to Spanish Fork Canyon. The reservoir and tunnel were completed in 1912.







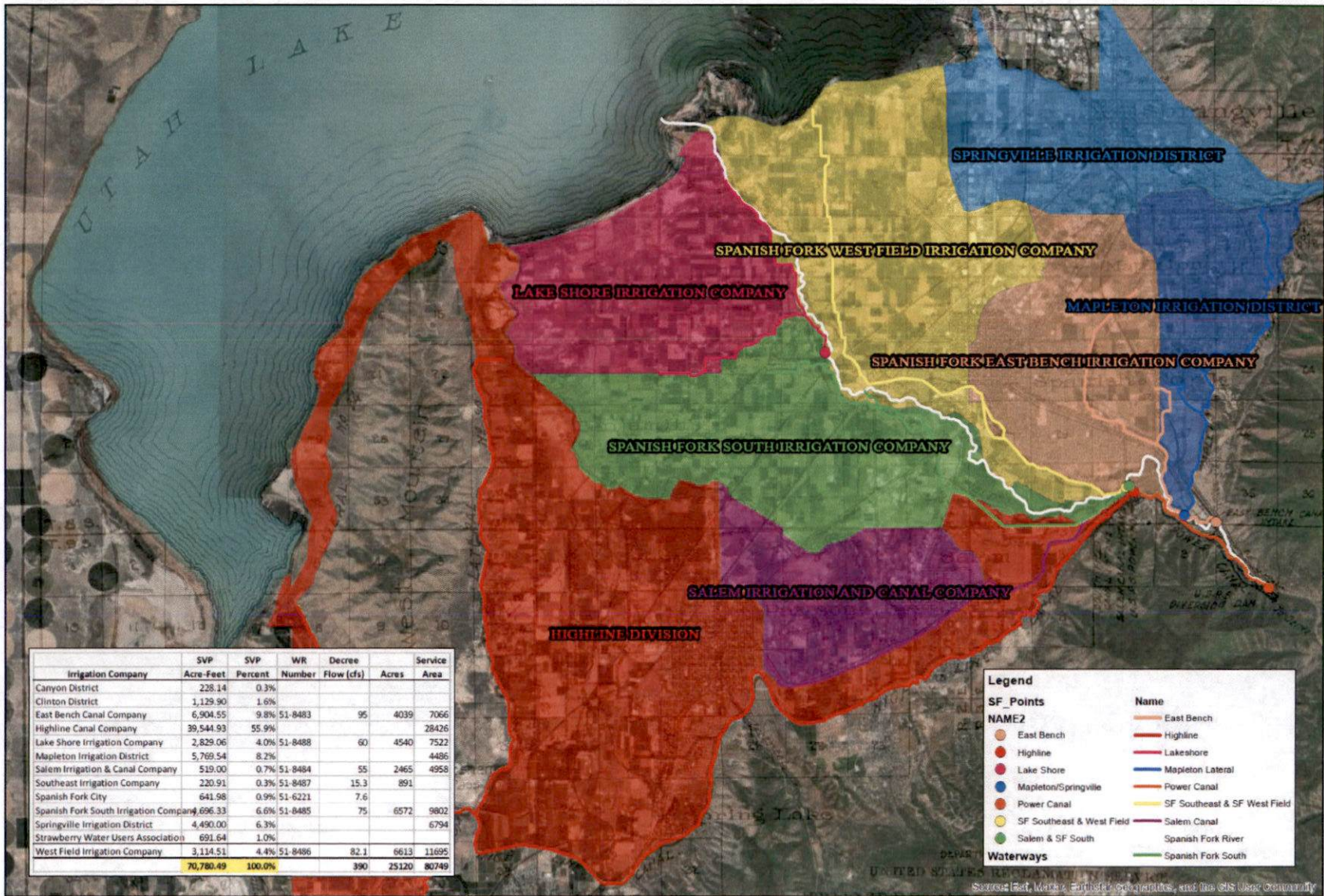
**Strawberry Dam**

Height: 72 feet

Length: 490 feet

Completed: September 20, 1913





Irrigation Company	SVP Acre-Feet	SVP Percent	WR Number	Decree Flow (cfs)	Acres	Service Area
Canyon District	228.14	0.3%				
Clinton District	1,129.90	1.6%				
East Bench Canal Company	6,904.55	9.8%	51-8483	95	4039	7066
Highline Canal Company	39,544.93	55.9%				28426
Lake Shore Irrigation Company	2,829.06	4.0%	51-8488	60	4540	7522
Mapleton Irrigation District	5,769.54	8.2%				4486
Salem Irrigation & Canal Company	519.00	0.7%	51-8484	55	2465	4958
Southeast Irrigation Company	220.91	0.3%	51-8487	15.3	891	
Spanish Fork City	641.98	0.9%	51-6221	7.6		
Spanish Fork South Irrigation Company	4,696.33	6.6%	51-8485	75	6572	9802
Springville Irrigation District	4,490.00	6.3%				6794
Strawberry Water Users Association	691.64	1.0%				
West Field Irrigation Company	3,114.51	4.4%	51-8486	82.1	6613	11695
<b>Total</b>	<b>70,780.49</b>	<b>100.0%</b>		<b>390</b>	<b>25120</b>	<b>80749</b>

**Legend**

**SF Points**

**NAME2**

- East Bench
- Highline
- Lake Shore
- Mapleton/Springville
- Power Canal
- SF Southeast & West Field
- Salem & SF South

**Name**


- East Bench
- Highline
- Lakeshore
- Mapleton Lateral
- Power Canal
- SF Southeast & SF West Field
- Salem Canal
- Spanish Fork River
- Spanish Fork South

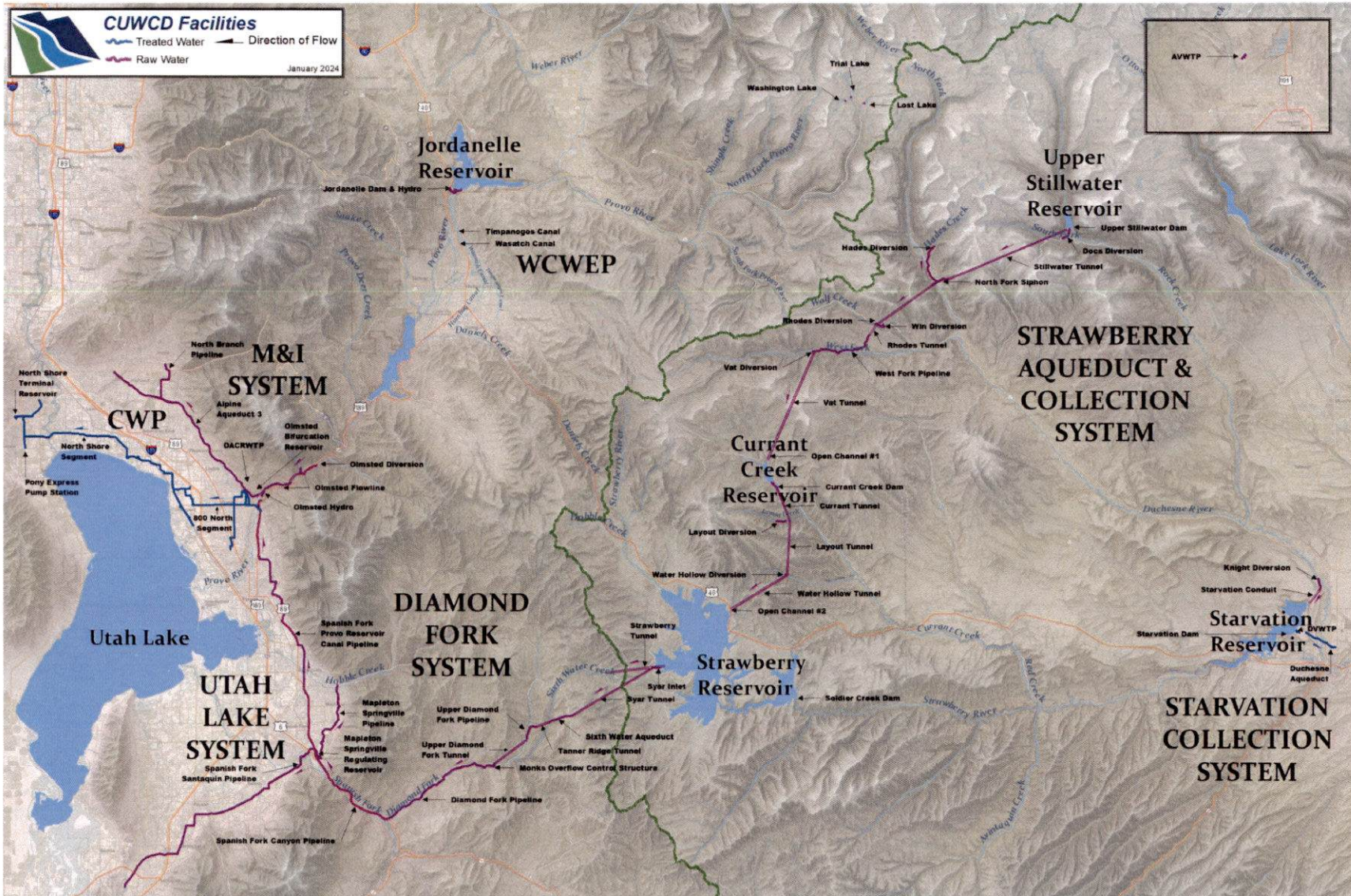
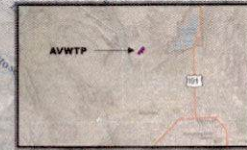
**Waterways**



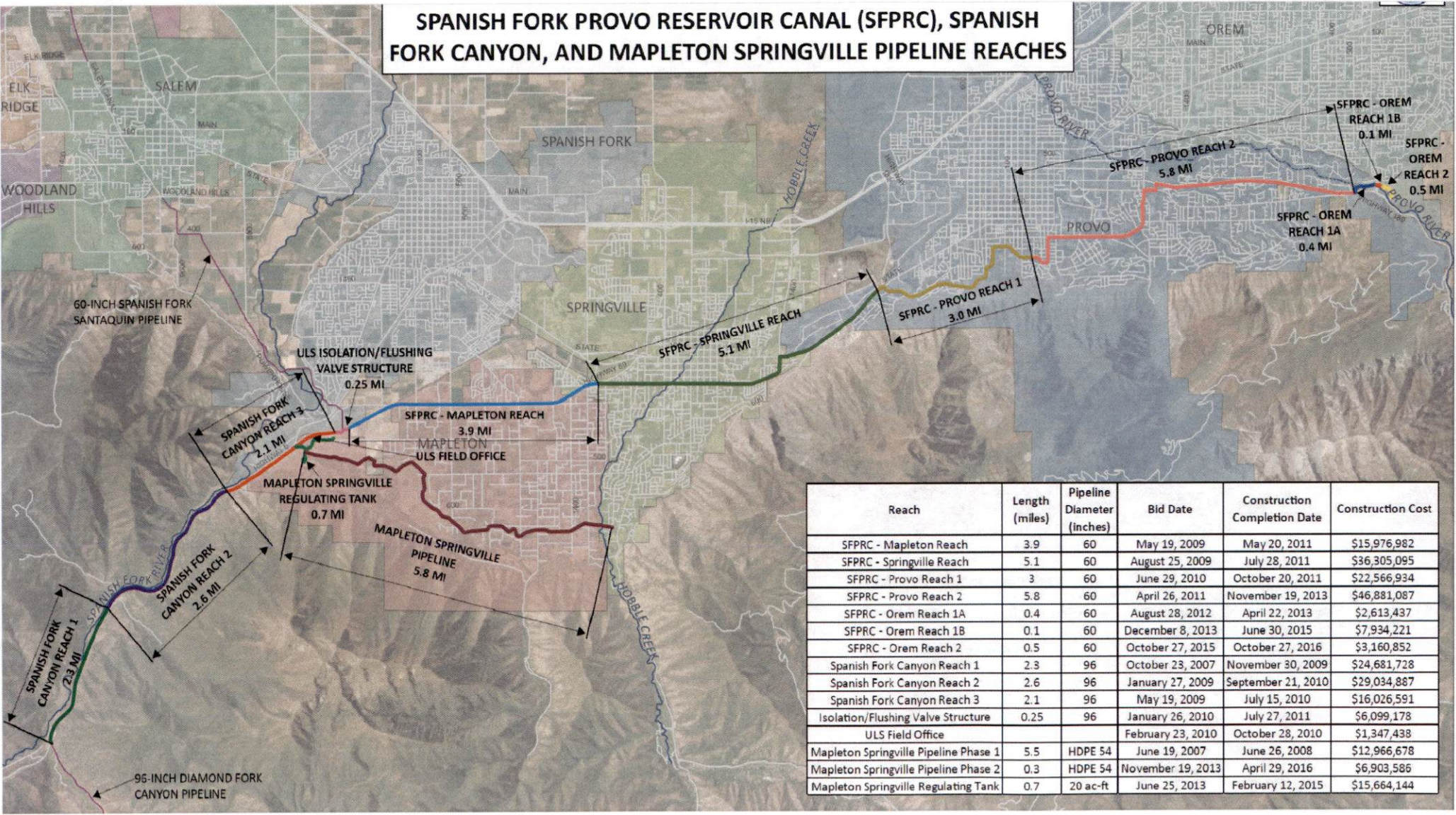
DEPARTMENT OF WATER  
 UNITED STATES RECLAMATION SERVICE  
 SOURCE: GCS, MAPS, AIRPHOTO, COGNITIVE, AND THE US USER COMMUNITY



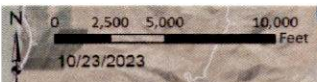
**CUWCD Facilities**  
  
 January 2024



## SPANISH FORK PROVO RESERVOIR CANAL (SFPRC), SPANISH FORK CANYON, AND MAPLETON SPRINGVILLE PIPELINE REACHES



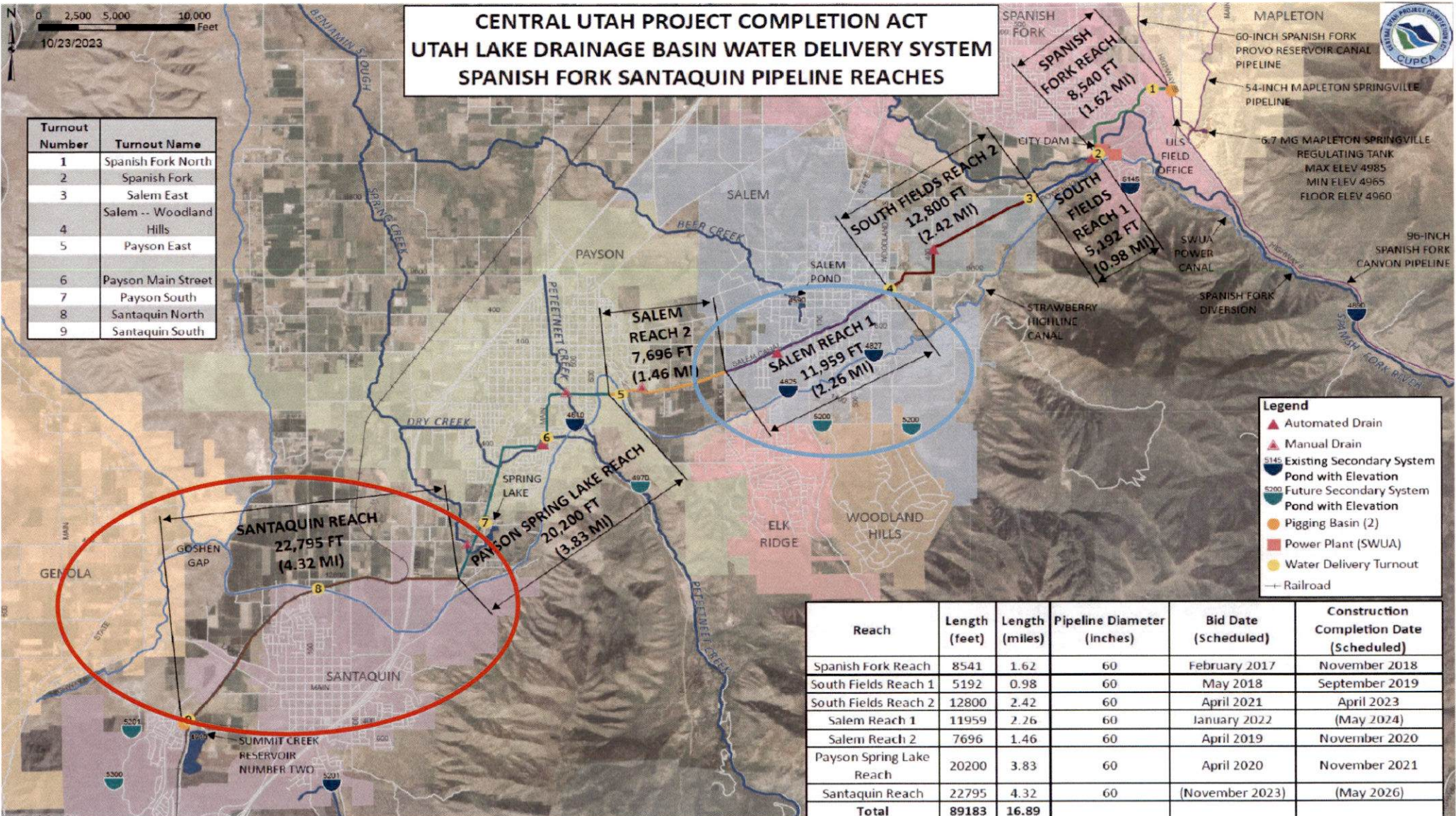
Reach	Length (miles)	Pipeline Diameter (inches)	Bid Date	Construction Completion Date	Construction Cost
SFPRC - Mapleton Reach	3.9	60	May 19, 2009	May 20, 2011	\$15,976,982
SFPRC - Springville Reach	5.1	60	August 25, 2009	July 28, 2011	\$36,305,095
SFPRC - Provo Reach 1	3	60	June 29, 2010	October 20, 2011	\$22,566,934
SFPRC - Provo Reach 2	5.8	60	April 26, 2011	November 19, 2013	\$46,881,087
SFPRC - Orem Reach 1A	0.4	60	August 28, 2012	April 22, 2013	\$2,613,437
SFPRC - Orem Reach 1B	0.1	60	December 8, 2013	June 30, 2015	\$7,934,221
SFPRC - Orem Reach 2	0.5	60	October 27, 2015	October 27, 2016	\$3,160,852
Spanish Fork Canyon Reach 1	2.3	96	October 23, 2007	November 30, 2009	\$24,681,728
Spanish Fork Canyon Reach 2	2.6	96	January 27, 2009	September 21, 2010	\$29,034,887
Spanish Fork Canyon Reach 3	2.1	96	May 19, 2009	July 15, 2010	\$16,026,591
Isolation/Flushing Valve Structure	0.25	96	January 26, 2010	July 27, 2011	\$6,099,178
ULS Field Office			February 23, 2010	October 28, 2010	\$1,347,438
Mapleton Springville Pipeline Phase 1	5.5	HDPE 54	June 19, 2007	June 26, 2008	\$12,966,678
Mapleton Springville Pipeline Phase 2	0.3	HDPE 54	November 19, 2013	April 29, 2016	\$6,903,586
Mapleton Springville Regulating Tank	0.7	20 ac-ft	June 25, 2013	February 12, 2015	\$15,664,144



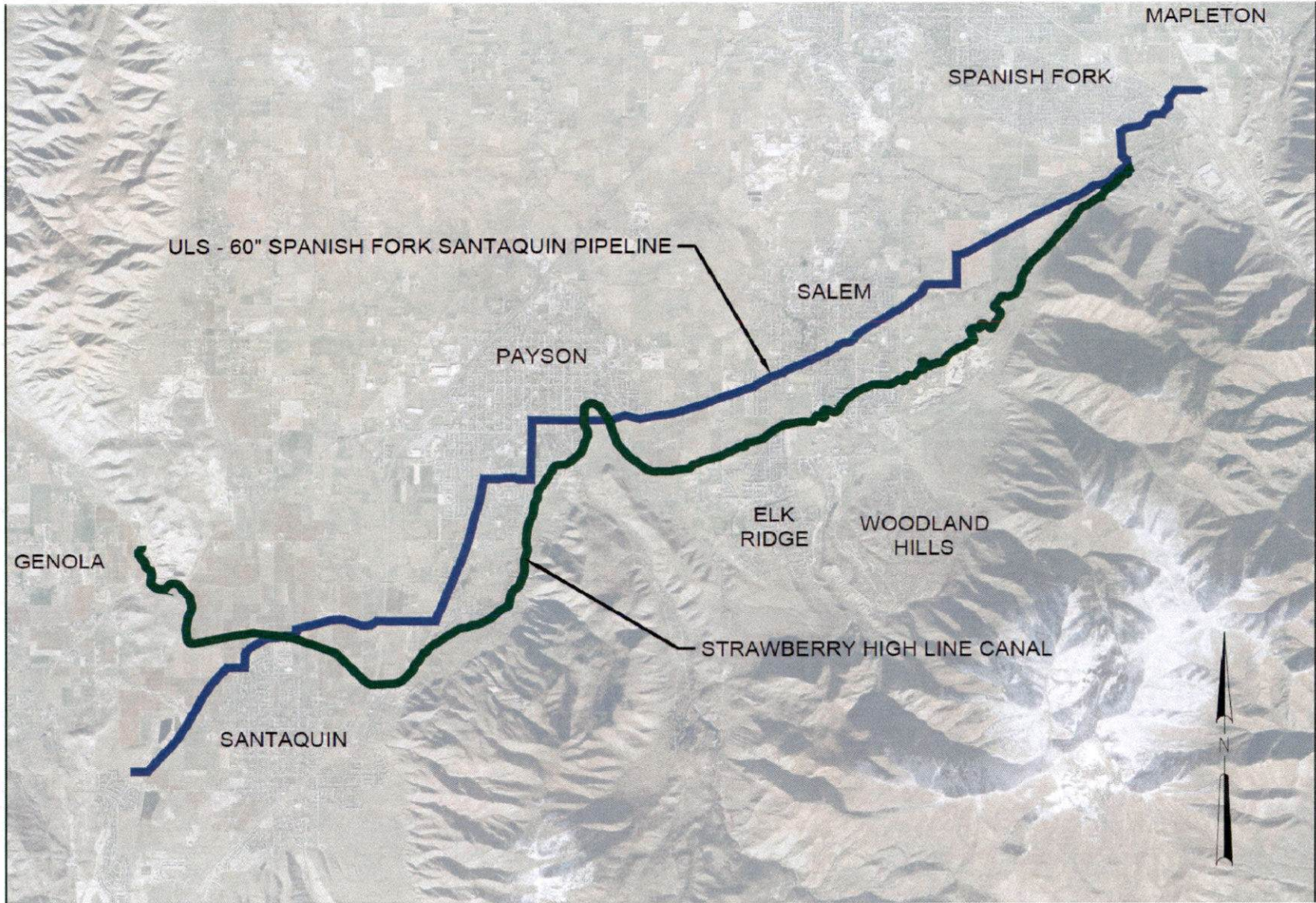
# CENTRAL UTAH PROJECT COMPLETION ACT UTAH LAKE DRAINAGE BASIN WATER DELIVERY SYSTEM SPANISH FORK SANTAQUIN PIPELINE REACHS

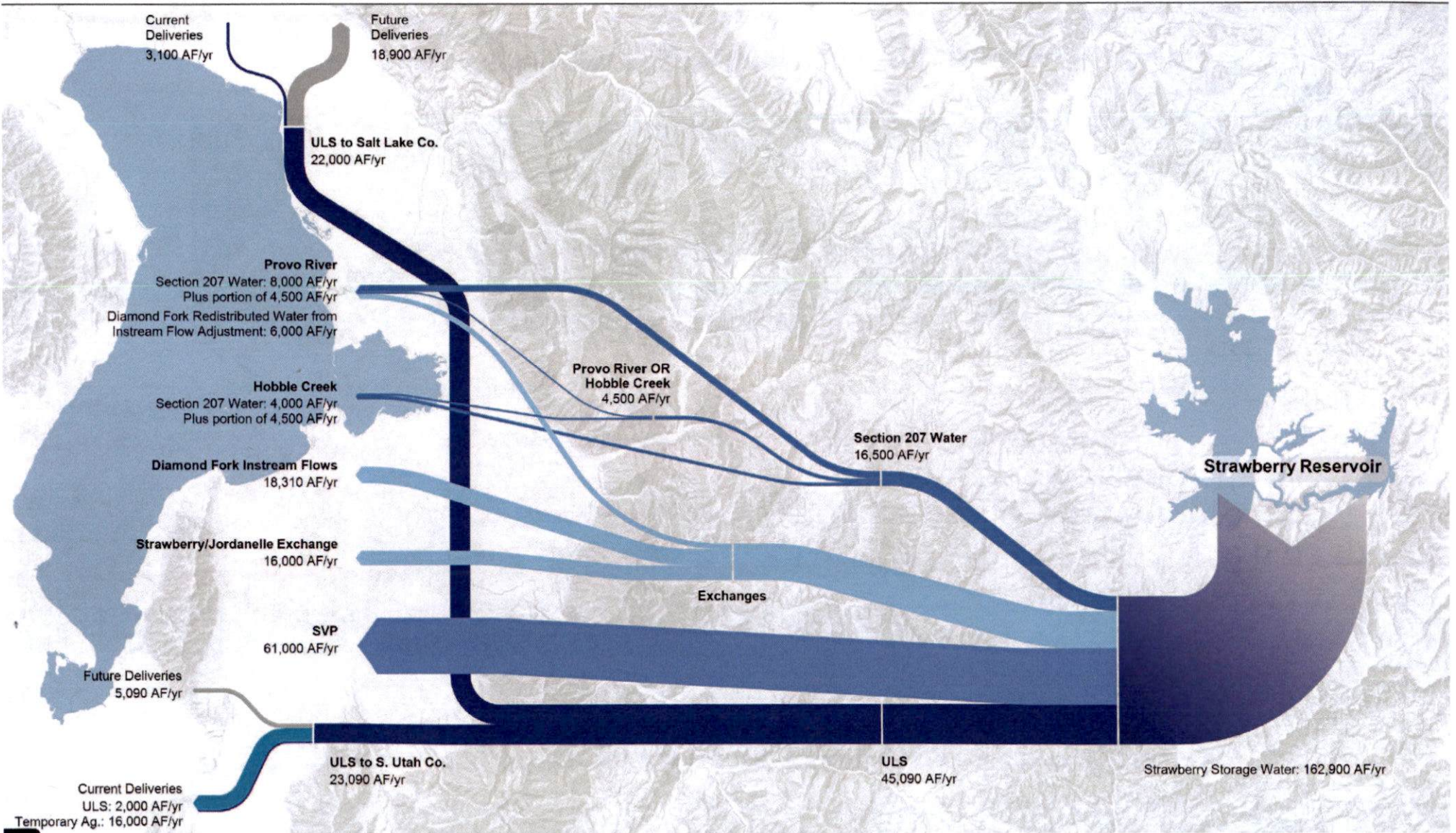


Turnout Number	Turnout Name
1	Spanish Fork North
2	Spanish Fork
3	Salem East
4	Salem -- Woodland Hills
5	Payson East
6	Payson Main Street
7	Payson South
8	Santaquin North
9	Santaquin South



Reach	Length (feet)	Length (miles)	Pipeline Diameter (Inches)	Bid Date (Scheduled)	Construction Completion Date (Scheduled)
Spanish Fork Reach	8541	1.62	60	February 2017	November 2018
South Fields Reach 1	5192	0.98	60	May 2018	September 2019
South Fields Reach 2	12800	2.42	60	April 2021	April 2023
Salem Reach 1	11959	2.26	60	January 2022	(May 2024)
Salem Reach 2	7696	1.46	60	April 2019	November 2020
Payson Spring Lake Reach	20200	3.83	60	April 2020	November 2021
Santaquin Reach	22795	4.32	60	(November 2023)	(May 2026)
<b>Total</b>	<b>89183</b>	<b>16.89</b>			





## Changes to the Strawberry High Line Canal

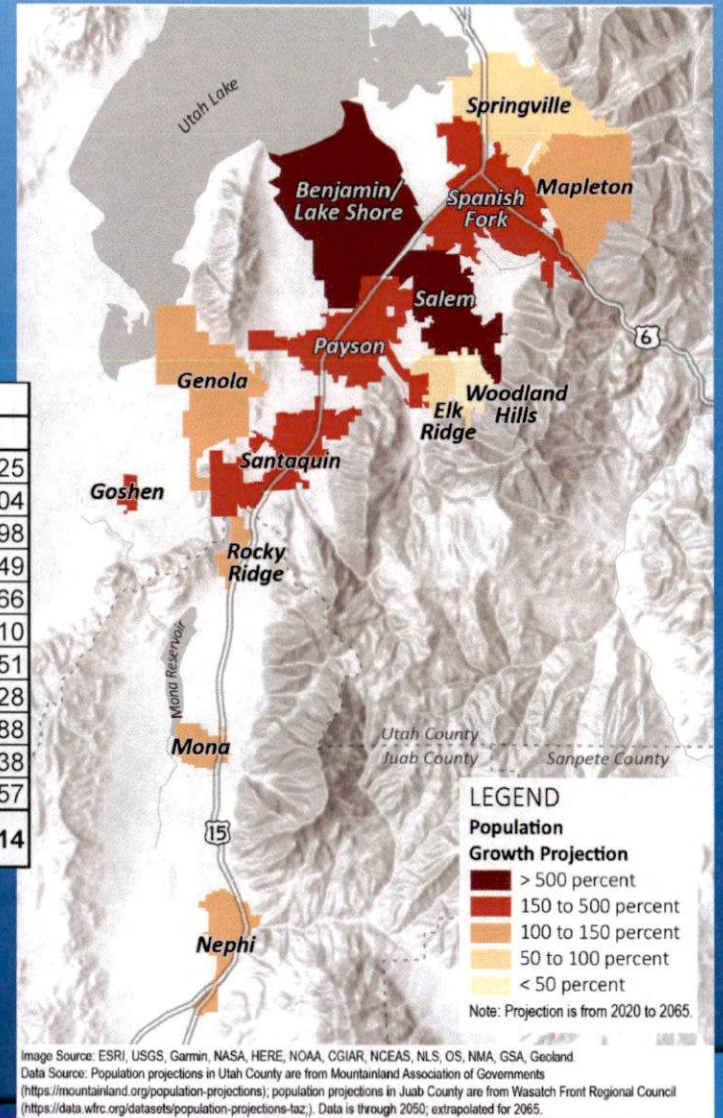


- Enclose High Line Canal in a pipe to provide public safety, improved water conservation, and efficient water management
- Capture saved water under CUPCA Section 207 authority for use by the Secretary and District
- Incorporate Return Flows to Utah Lake into Bonneville Unit water supply

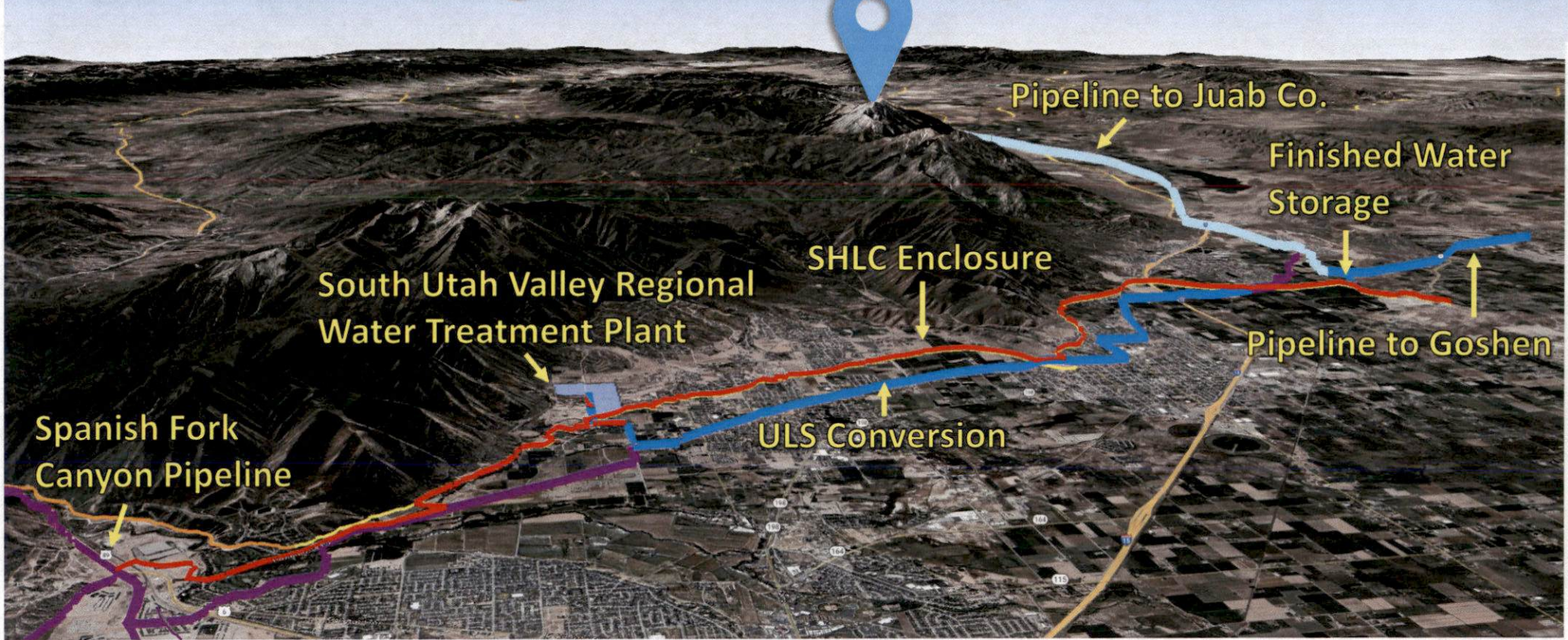


# Population Projections – South Utah County

TABLE 1	POPULATION				
	2030	2040	2050	2060	2065
Benjamin/Lake Shore	8,576	8,576	45,000	58,196	74,925
Elk Ridge	4,314	5,167	5,780	6,505	6,804
Genola	1,486	1,578	2,696	3,107	3,598
Goshen	1,185	1,671	2,095	2,542	2,749
Mapleton	16,480	19,726	21,724	24,375	25,366
Payson	30,341	42,728	64,887	79,944	90,210
Salem	21,426	36,057	48,708	62,222	68,451
Santaquin	19,162	29,982	41,507	52,179	57,728
Spanish Fork	58,643	79,575	93,509	111,291	118,288
Springville	48,562	58,174	61,969	69,134	71,138
Woodland Hills	1,824	2,018	2,200	2,373	2,457
<b>Total</b>	<b>211,999</b>	<b>285,252</b>	<b>390,075</b>	<b>471,868</b>	<b>521,714</b>



# Nebo Regional Water Project (NWP)





# Existing

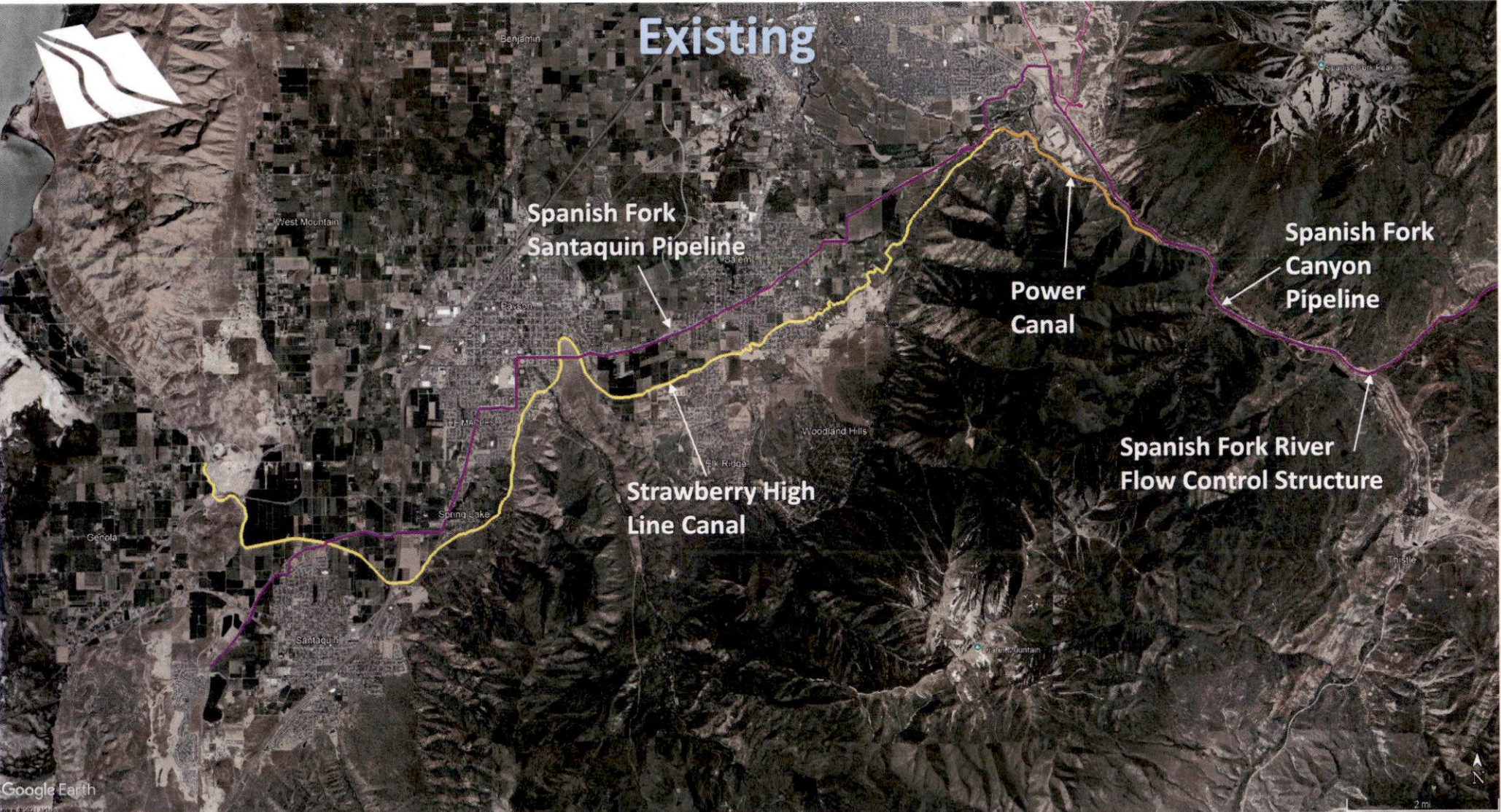
Spanish Fork  
Santaquin Pipeline

Power  
Canal

Spanish Fork  
Canyon  
Pipeline

Strawberry High  
Line Canal

Spanish Fork River  
Flow Control Structure



# Proposed

Finished Water in  
ULS Spanish Fork  
Santaquin Pipeline

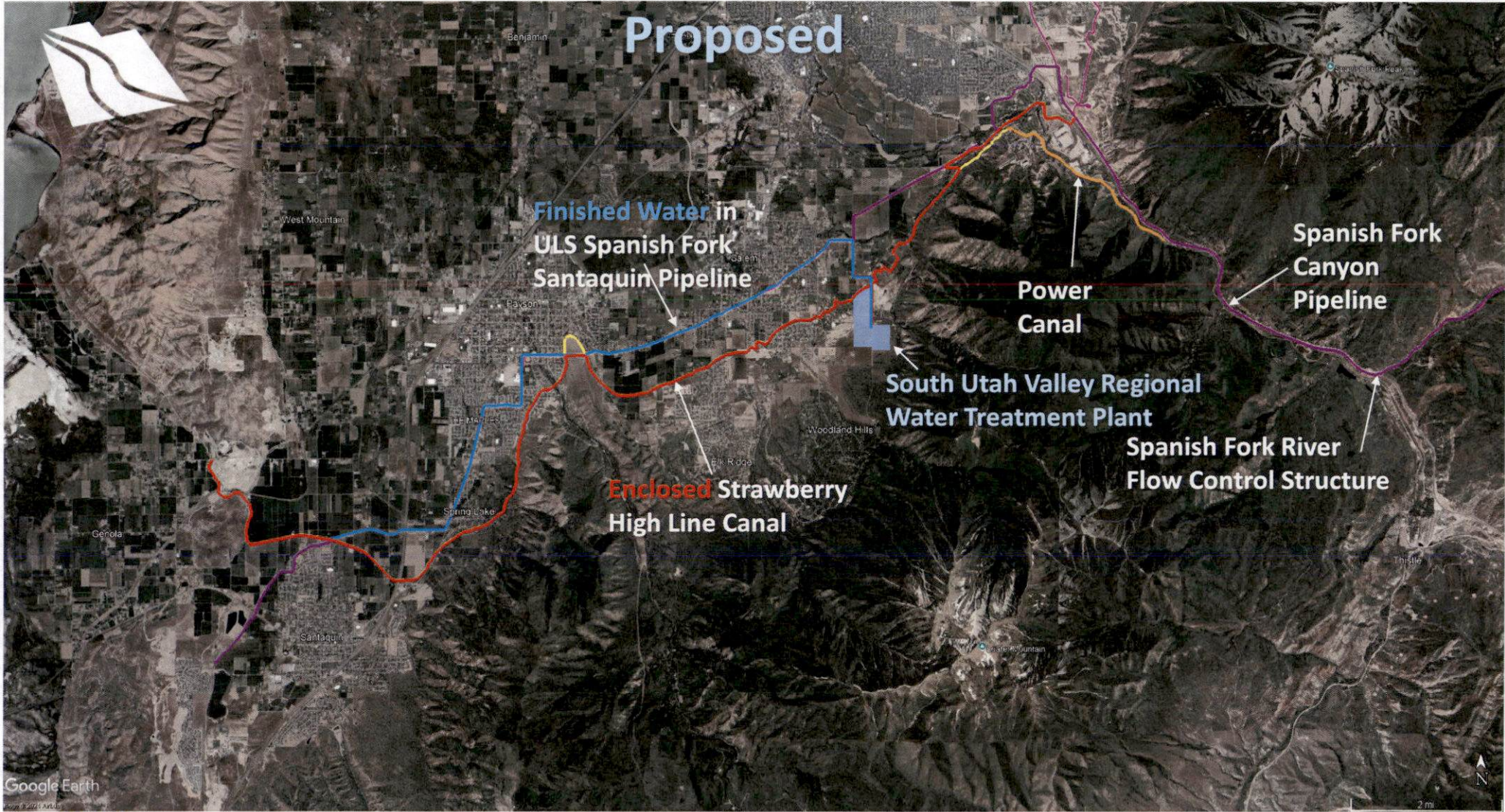
Power  
Canal

Spanish Fork  
Canyon  
Pipeline

South Utah Valley Regional  
Water Treatment Plant

Spanish Fork River  
Flow Control Structure

Enclosed Strawberry  
High Line Canal





Multi-use Trail

SmartSign.com • 800-952-1407 • 8-0709

Google Earth

2 mi

# NWP Timeline

