



PARKS & TRAILS ADVISORY BOARD

Wednesday, August 14, 2024 at 6:00 PM
via Zoom

AGENDA

THIS MEETING WILL BE HELD ONLINE VIA ZOOM:

<https://us02web.zoom.us/j/84264600830>

ROLL CALL

CHANGES TO THE AGENDA

PUBLIC COMMENT

CONSENT AGENDA

1. Approval of July Minutes

NEW BUSINESS

OLD BUSINESS

2. Lango Hansen Landscape Architects will present options for Meinig Park.

STAFF UPDATES

ADJOURN

Americans with Disabilities Act Notice: Please contact Sandy City Hall, 39250 Pioneer Blvd. Sandy, OR 97055 (Phone: 503-668-5533) at least 48 hours prior to the scheduled meeting time if you need an accommodation to observe and/or participate in this meeting.



PARKS & TRAILS ADVISORY BOARD MEETING

Wednesday, July 10, 2024 at 6:00 PM
Sandy City Hall and via Zoom

MINUTES

TO ATTEND THE MEETING IN-PERSON:

Come to City Hall Council Chambers- 39250 Pioneer Blvd. Sandy, OR 97055

TO ATTEND THE MEETING ONLINE VIA ZOOM:

Please use this link: <https://us02web.zoom.us/j/84264600830>

ROLL CALL

PRESENT

Alexandria Gale
Don Robertson
Will Toogood
Upekala Wijayratne

ABSENT

Ryan Aultman
David Breames
Kimberly Seigal

Staff Present:

Rochelle Anderholm-Parsch, Parks & Recreation Director
Tiana Rundell, Parks & Facilities Manager

Guest Presenters:

CHANGES TO THE AGENDA

PUBLIC COMMENT

CONSENT AGENDA

1. Approval of May Minutes

Motion to approve May minutes

Motion made by Toogood, Seconded by Gale.

Voting Yea: Gale, Robertson, Toogood, Wijayratne

NEW BUSINESS

2. Group will Discuss Meinig Park Visioning for the future.

Kurt Lango with Lango Hansen Landscape Architects presents a slideshow. The Parks Board is asked for their feedback on 5 focus areas: No Name Creek, Fantasy Forest playground, Pathways through the park, an off leash dog park, and Hillside seating. The parking lot is also discussed.

Dog park:

Consensus from the Parks Board was that they'd like to see the focus stick to the other areas of the park.

Creek:

Don thinks the creeks needs to be evaluated by professionals. Pek would like to see it restored. Alex agrees the creek is a priority.

Fantasy Forest:

Kurt mentions that the plan would be to replace Fantast Forest, as Fantasy Forest currently has maintenance, hazard, and ADA/inclusivity issues.

Alex agrees it needs to be fixed and their a lot of safety issues. Pek would like to see the playground replaced with something equal and has a likeness to the current design. Don agrees the new playground would need to have the same appeal.

Pathways:

Don expresses the pathways need to be fixed for accessibility. Pek agrees. Alex adds that the tree roots can make it hard to get around on current paths.

Hillside:

Will is not sure if built in seating is the answer but does feel it needs more seating and comfortable seating. Alex agrees. Pek would like it to be comfortable but natural. Do would like it to be accessible and safe.

Rochelle summarizes the Parks Boards feelings: No Name Creek, Fantasy Forest, the pathways, and seating are a priority. A lower priority is the dog park and is not the focus right now. Don mentions parking and neighborhood access points in terms of parking and signage.

3. Lango Hanson will show options for the Deer Pointe Playground.

Kurt presents and overview of the design so far as well as their playground idea.

Alex loves it- thinks it's whimsical and inclusive. Pek thinks it will be a visual draw and very unique. Will loves the design and he does ask a question on the walking path connecting to highway 26.

Don points out that a covered basketball court would provide another area for special events.

OLD BUSINESS

STAFF UPDATES

Rochelle's Updates:

I9 Sports Camps start next week at some Sandy parks.

Summer concerts kick off with Eagle Eyes July 24th, followed by two more concerts on August 7th and 21st.

Summer movies kick off July 19th, followed by two more on August 2nd and 16th.

Parks & Recreation partnered with Mt. Hood Athletic Club to offer swim opportunities to Sandy residents. This has been very popular. There are very few lessons remaining at this point.

Longest Day Parkway was another success with around 300 people attending.

It was also another successful year for Noah's Quest.

Cedar Park is on schedule and there are regular drone footage updates posted to the park webpage.

Tiana's Updates:

The Parks team is busy preparing for Mountain festival.

They've finished some Fantasy Forest and Bornstedt Playground repairs. Adding swings to Tupper is still under review.

Winterfest planning is well underway.

Brandon has his CDL now.

Tiana's time has been consumed with a lot of facility repairs.

ADJOURN

Americans with Disabilities Act Notice: Please contact Sandy City Hall, 39250 Pioneer Blvd. Sandy, OR 97055 (Phone: 503-668-5533) at least 48 hours prior to the scheduled meeting time if you need an accommodation to observe and/or participate in this meeting.



STAFF REPORT

Meeting Type: Parks and Trails Advisory Board
Meeting Date: August 14, 2024
From: Rochelle Anderholm-Parsch, Parks and Recreation Director
Subject: Meinig Memorial Park Improvements / Meeting #2

DECISION TO BE MADE:

This is the second meeting regarding improvements to Meinig Memorial Park and an opportunity for Staff and Lango Hansen Landscape Architects to review and seek input about Meinig Park Improvements / Restoration. Additionally, the Parks Board will be updated on the results from the Council meeting and will review refined options for consideration, incorporating the areas of focus.

PURPOSE / OBJECTIVE:

The objective is for the Parks Board to provide input and recommendations regarding the redevelopment and improvements of Meinig Park.

BACKGROUND / CONTEXT:

A master plan for Meinig Memorial Park was created in 2011, and the project went out to bid in 2017. The project stalled but now has been revitalized with funding allocated in the 2023-2025 fiscal year. The focus is on re-envisioning the ADA accessibility of Meinig Park, improving access for large events such as Winterfest and Mt. Festival, and redeveloping Fantasy Forest, which is beyond its useful life. The redevelopment aims to provide a safe and inclusive play experience. Additionally, "No Name Creek" has eroded creek beds, causing trail undermining, making stream and trail restoration a high priority.

Staff and Lango Hansen presented to the Council on July 15, 2024. Parks Board feedback was included in the report. The updated areas of focus are:

1. No Name Creek Restoration
2. Fantasy Forest Playground
3. Pathway and Trail System
4. Hillside Seating
5. Parking Lot Improvements

It was determined that the dog park should be studied as an amenity at another park location, as Meinig Park is not the best location for the originally proposed dog park.

The council will review Meinig Park options during the Sept. 3, 2024, meeting.

KEY CONSIDERATIONS / ANALYSIS:

Improvements to this cherished community park are crucial. The Parks and Recreation Department has been provided with funds to design the necessary improvements, focusing on enhancing accessibility, event accommodation, and safe, inclusive play areas.

BUDGET IMPACT:

Funding has been allocated for the design phase of Meinig Memorial Park for the fiscal year 2023-2025. This allocation covers the design and bid phases, and funds to address immediate safety issues.

RECOMMENDATION:

Staff requests that the Parks Board review the proposed options and provide recommendations.

LIST OF ATTACHMENTS / EXHIBITS:

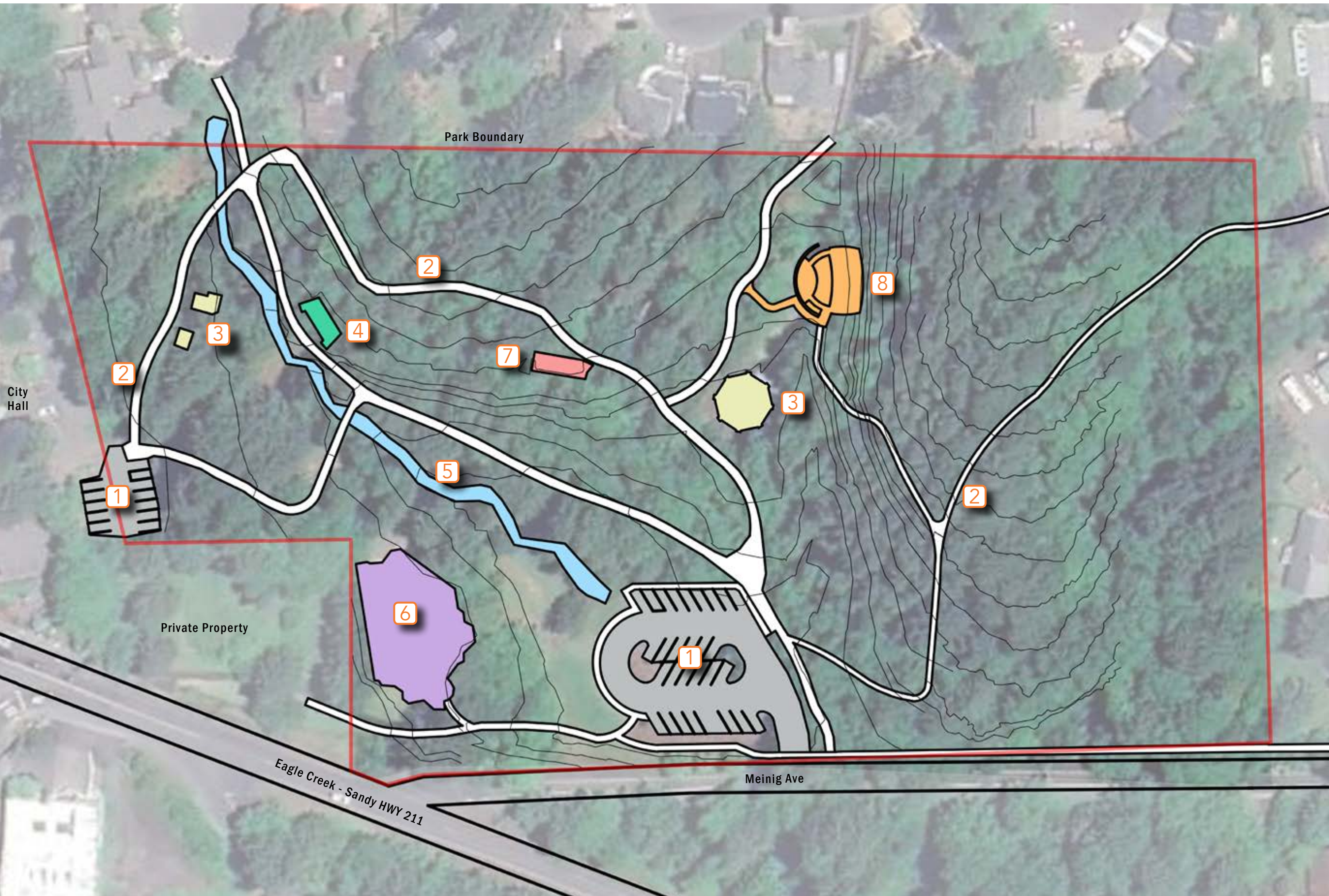
1. Presentation: Meinig Memorial Park



MEINIG MEMORIAL PARK
Parks and Trails Advisory Board
August 14, 2024

PARK AMENITIES Item # 2.

- 1** Parking Lot
- 2** Park Pathway System
- 3** Picnic Shelters
- 4** Main Stage
- 5** No Name Creek
- 6** Fantasy Forest Playground
- 7** Restrooms
- 8** Amphitheater



Existing Conditions

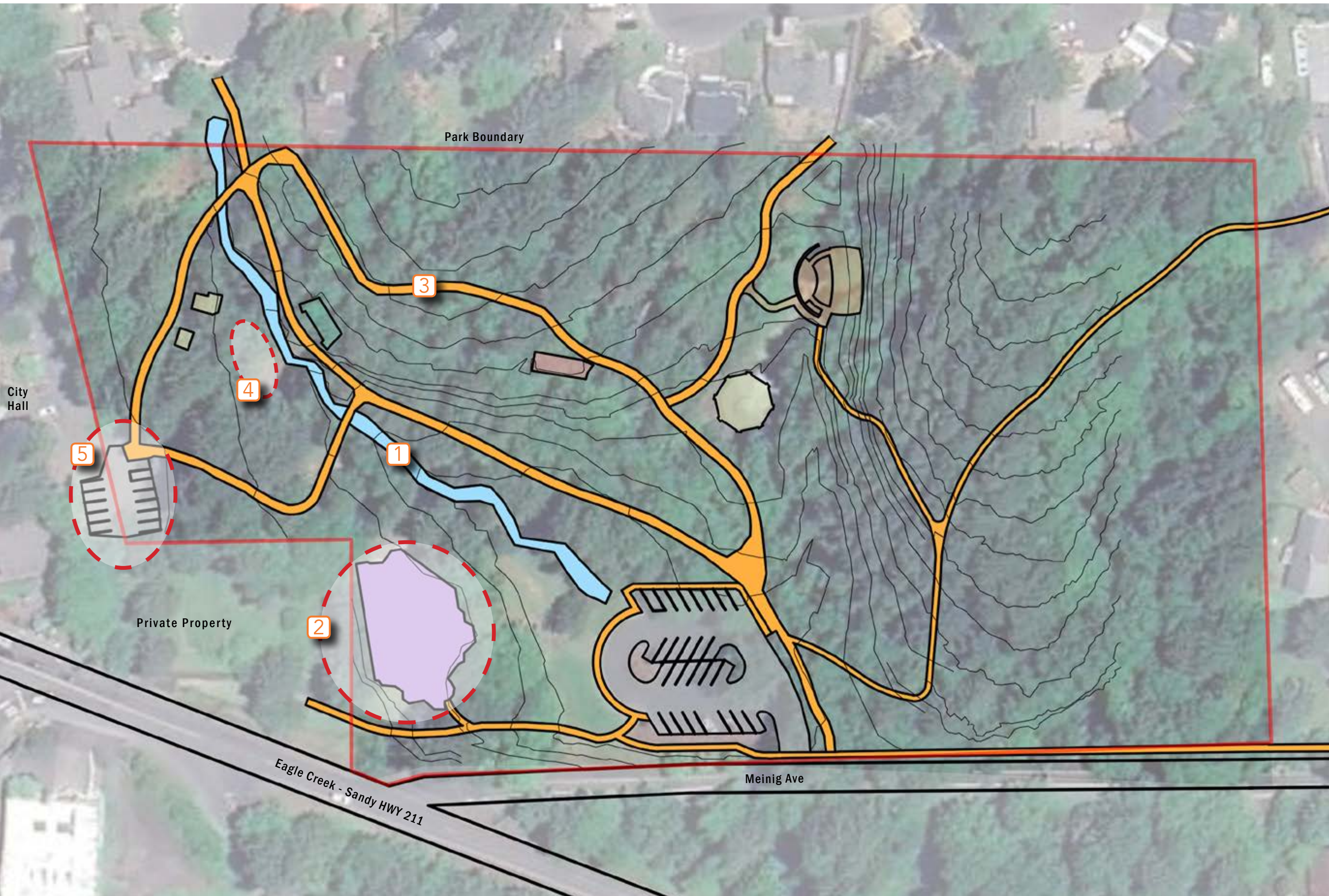
MEINIG MEMORIAL PARK 08.14.24



lango hansen LANDSCAPE ARCHITECTS

Focus Areas Item # 2.

- 1 No Name Creek
- 2 Fantasy Forest Playground
- 3 Park Pathway System
- 4 Hillside Seating
- 5 Parking Improvements





ISSUES

- Unregulated pedestrian access to creek
- Soil erosion from surrounding slopes
- Lack of vegetation and habitat
- Degraded water quality and bank conditions

IMPROVEMENTS

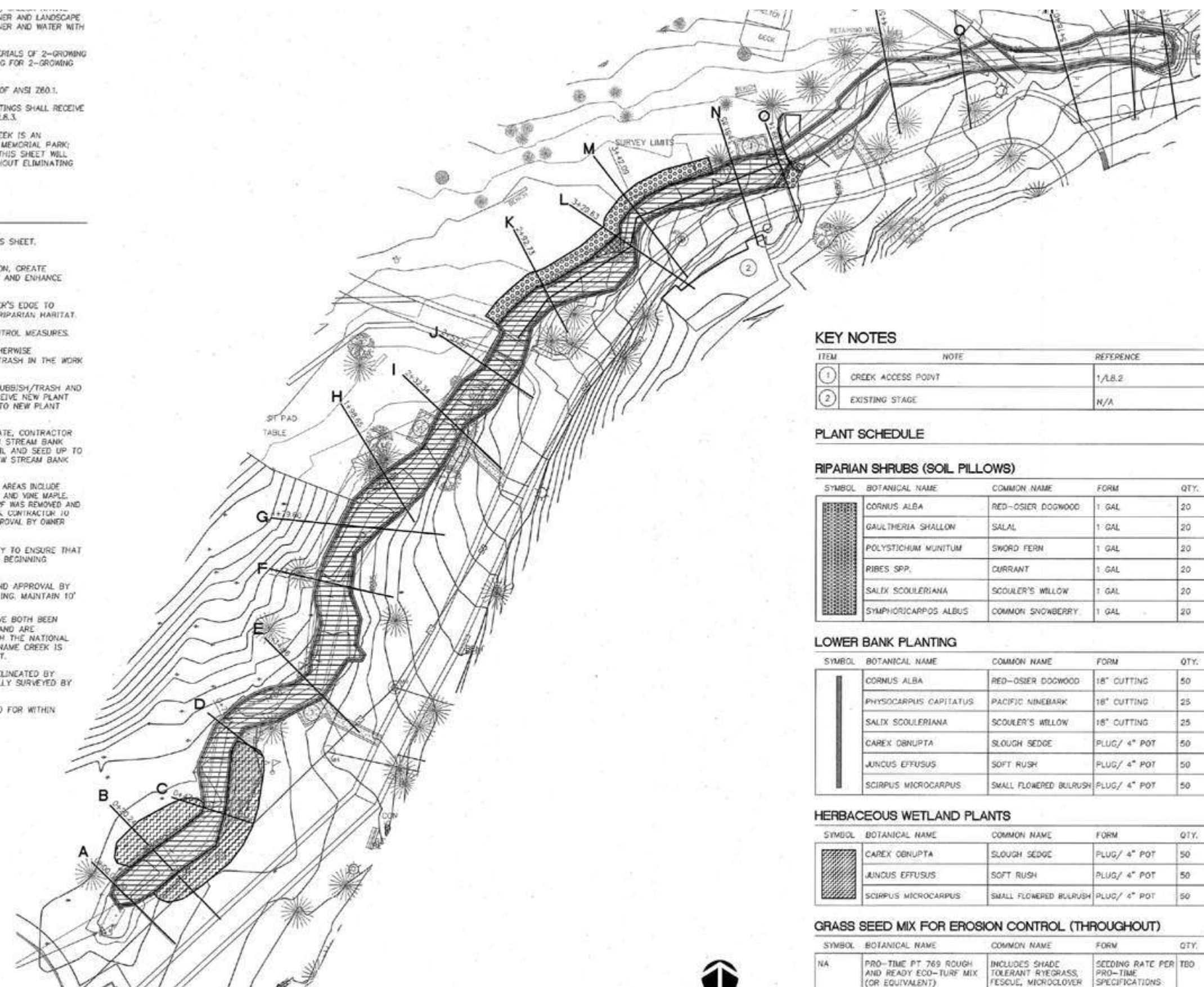
- 1 Stream Access
- 2 Bank Stabilization
- 3 Revegetation and Habitat restoration
- 4 Water quality improvement

Focus Area 1 - No Name Creek Restoration

- SHRUBS, PLANT SPECIES TO BE DETERMINED BY OWNER AND LANDSCAPE ARCHITECT. INSTALL IN AREAS AS DIRECTED BY OWNER AND WATER WITH DEL. PACKS. FOR 2-GROWING SEASONS.
- 2. PROVIDE A MINIMUM WARRANTY ON ALL PLANT MATERIALS OF 2-GROWING SEASONS. PROVIDE TEMPORARY IRRIGATION/WATERING FOR 2-GROWING SEASONS.
- 3. ALL PLANT MATERIAL SHALL MEET THE STANDARDS OF ANSI Z60.1.
- 4. ALL SHRUBS, GROUNDCOVER AND UPPER BANK PLANTINGS SHALL RECEIVE 2-INCHES OF COMPOSTED BARK MULCH COVER SEE L.B.3.
- 5. VIEW/ACCESS POINTS -- ACCESS TO NO NAME CREEK IS AN IMPORTANT PART OF THE EXPERIENCE AT MEINIG MEMORIAL PARK. LIMITING ACCESS TO THE LOCATIONS SHOWN ON THIS SHEET WILL HELP IMPROVE THE CONDITION OF THE BANK WITHOUT ELIMINATING THIS ACTIVITY SEE 1/L.B.2.

INSTALLATION NOTES

- GENERAL**
1. ALL INFORMATION ON SHEET T1.0 APPLIES TO THIS SHEET.
- NO NAME CREEK IMPROVEMENTS**
- INTENT - IMPROVE BANK CONDITIONS, REDUCE EROSION, CREATE OPPORTUNITY FOR HABITAT, IMPROVE WATER QUALITY AND ENHANCE PEDESTRIAN ACCESS.
2. VEGETATION - INSTALL VERY CLOSE TO THE WATER'S EDGE TO STABILIZE THE BANKS AND TO IMPROVE STREAM/RIPARIAN HABITAT.
 3. (SEE EROSION CONTROL PLANS) FOR EROSION CONTROL MEASURES.
 4. REMOVE ALL NON-NATIVE, DEAD, INVASIVE OR OTHERWISE UNDESIRABLE PLANT SPECIES AND ANY RUBBISH/TRASH IN THE WORK AREA.
 5. REMOVE SILT ACCUMULATION, WEEDS AND TURF, RUBBISH/TRASH AND OTHER ITEMS IN AREAS SHOWN ON PLANS TO RECEIVE NEW PLANT MATERIAL AND AS DIRECTED OF THE CITY PRIOR TO NEW PLANT MATERIAL INSTALLATION.
 6. BOUNDARY OF EXISTING LAWN AREA IS APPROXIMATE, CONTRACTOR SHALL PROVIDE SEAMLESS TRANSITION ZONE FROM STREAM BANK PLANTING TO EXISTING LAWN AREAS. PREPARE SOIL AND SEED UP TO THE EDGE OF ADJACENT PATHS AND EDGES OF NEW STREAM BANK PLANTINGS.
 5. PLANTS TO BE USED IN RE-VEGETATION OF DISTURBED AREAS INCLUDE INDIAN PLUM, RED-OSIER DOGWOOD, PACIFIC NINEBARK, AND VINE MAPLE. TURF TO BE USED ONLY IN AREAS WHERE EXISTING TURF WAS REMOVED AND NEED TO BE REPLACED TO MATCH EXISTING CONDITIONS. CONTRACTOR TO PROVIDE A RE-VEGETATION PLAN FOR REVIEW AND APPROVAL BY OWNER AND LANDSCAPE ARCHITECT. (SEE L2.1)
 6. CONTRACTOR SHALL COORDINATE WITH OWNER/CITY TO ENSURE THAT ALL NECESSARY PERMITS ARE IN PLACE PRIOR TO BEGINNING CONSTRUCTION ACTIVITIES.
 7. STAKE PROPOSED TREE LOCATIONS FOR REVIEW AND APPROVAL BY OWNER/OWNER'S REPRESENTATIVE PRIOR TO PLANTING. MAINTAIN 10' (FT.) MINIMUM DISTANCE FROM EXISTING TREES
 8. PERMITS - D.E.Q. AND ARMY CORPS. PERMITS HAVE BOTH BEEN SUBMITTED BY PACIFIC HABITAT SERVICES (PHS) AND ARE CURRENTLY UNDER REVIEW. NO COORDINATION WITH THE NATIONAL MARINE FISHERIES SERVICES IS REQUIRED AS NO NAME CREEK IS NOT DESIGNATED AS ESSENTIAL SALMONID HABITAT.
 - 8.1. THE ORDINARY HIGH WATER LINE HAS BEEN DELINEATED BY PACIFIC HABITAT SERVICES AND PROFESSIONALLY SURVEYED BY FIRWOOD DESIGN.
 - 8.2. CUT/FILL CALCULATION HAVE BEEN ACCOUNTED FOR WITHIN THESE PERMITS.



1 L22 FOCUS AREA A: CREEK IMPROVEMENTS 1" = 20'-0"

KEY NOTES

ITEM	NOTE	REFERENCE
1	CREEK ACCESS POINT	1/L.B.2
2	EXISTING STAGE	N/A

PLANT SCHEDULE

RIPARIAN SHRUBS (SOIL PILLOWS)

SYMBOL	BOTANICAL NAME	COMMON NAME	FORM	QTY.
[Symbol]	CORNUS ALBA	RED-OSIER DOGWOOD	1 GAL	20
[Symbol]	GAULTHERIA SHALLOW	SALAL	1 GAL	20
[Symbol]	POLYSTICHUM MUNIUM	SWORD FERN	1 GAL	20
[Symbol]	RIBES SPP.	CURRENT	1 GAL	20
[Symbol]	SALIX SCOULERIANA	SCOULER'S WILLOW	1 GAL	20
[Symbol]	SYMPHORICARPOS ALBUS	COMMON SNOWBERRY	1 GAL	20

LOWER BANK PLANTING

SYMBOL	BOTANICAL NAME	COMMON NAME	FORM	QTY.
[Symbol]	CORNUS ALBA	RED-OSIER DOGWOOD	18" CUTTING	50
[Symbol]	PHYSCARPUS CAPITATUS	PACIFIC NINEBARK	18" CUTTING	25
[Symbol]	SALIX SCOULERIANA	SCOULER'S WILLOW	18" CUTTING	25
[Symbol]	CAREX OBRUPTA	SLOUGH SEDGE	PLUG/ 4" POT	50
[Symbol]	JUNCUS EFFUSUS	SOFT RUSH	PLUG/ 4" POT	50
[Symbol]	SCIRPUS MICROCARPUS	SMALL FLOWERED BULRUSH	PLUG/ 4" POT	50

HERBACEOUS WETLAND PLANTS

SYMBOL	BOTANICAL NAME	COMMON NAME	FORM	QTY.
[Symbol]	CAREX OBRUPTA	SLOUGH SEDGE	PLUG/ 4" POT	50
[Symbol]	JUNCUS EFFUSUS	SOFT RUSH	PLUG/ 4" POT	50
[Symbol]	SCIRPUS MICROCARPUS	SMALL FLOWERED BULRUSH	PLUG/ 4" POT	50

GRASS SEED MIX FOR EROSION CONTROL (THROUGHOUT)

SYMBOL	BOTANICAL NAME	COMMON NAME	FORM	QTY.
NA	PRO-TIME PT 769 ROUGH AND READY ECO-TURF MIX (OR EQUIVALENT)	INCLUDES SHADE TOLERANT RYEGRASS, FESCUE, MICROCLOVER BLEND	SEEDING RATE PER PRO-TIME SPECIFICATIONS	TBD



Features

- Fort-like Structures
- Climbing Walls and Scrambles
- Nooks and Quiet Spaces
- Transfer Decks
- Ground Level Play Elements
- Swings
- Metal Posts and Platforms with Recycled Plastic Members

Focus Area 2 - Fantasy Forest Playground - Option 1



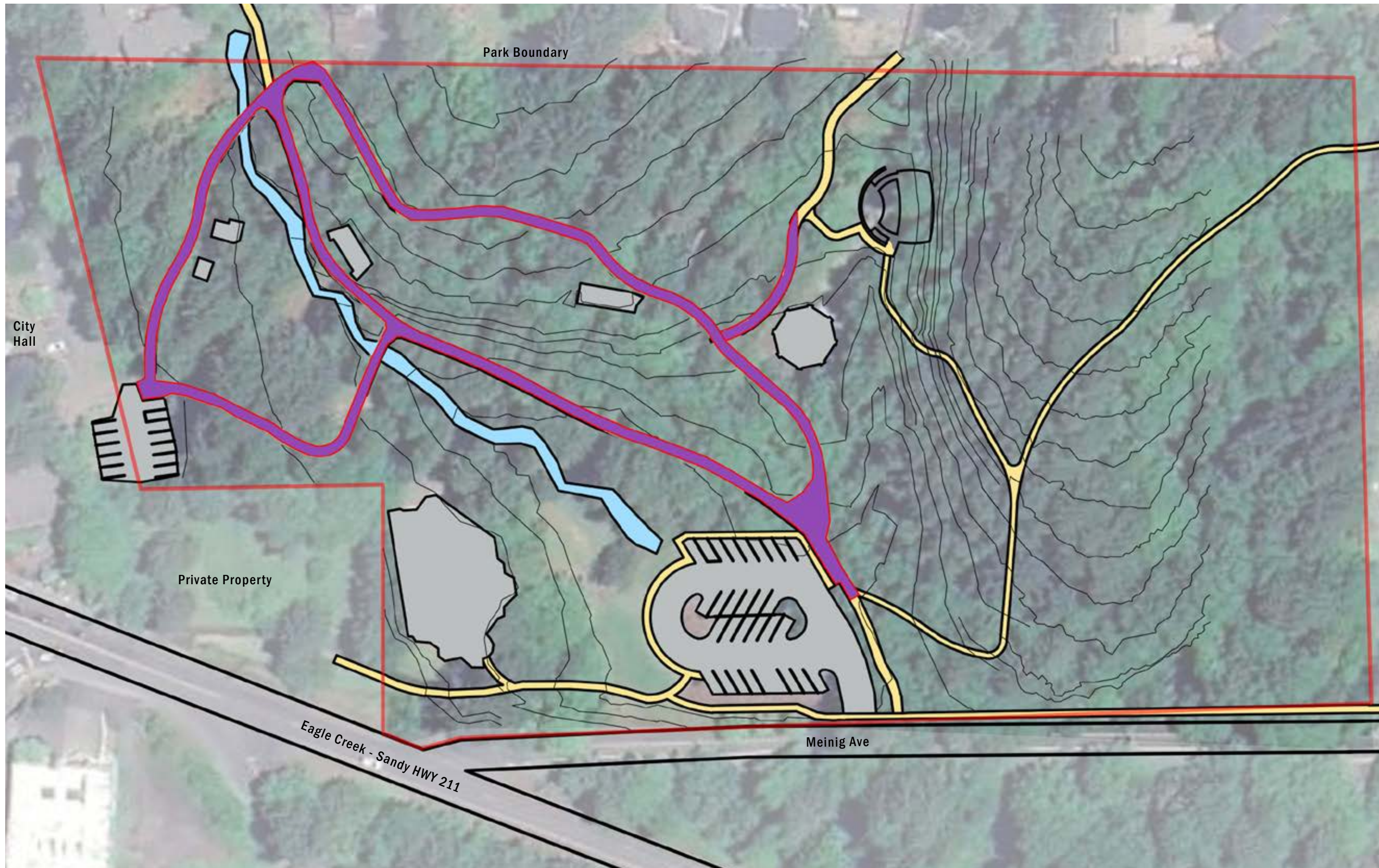
Features

- Climbing Maze
- Vertical Rope Column
- Wavy Net Scramble
- Spiraling tube slides
- Monkey Bars + Webbed Bridges
- Ground Level Play Elements
- Barrier-free Spinner



Features

- Embankment Ramp
- Sensory Tunnel
- Super Netplex
- Nature-inspired Climbers
- Spinners and Swings
- Symbol Communication Sign

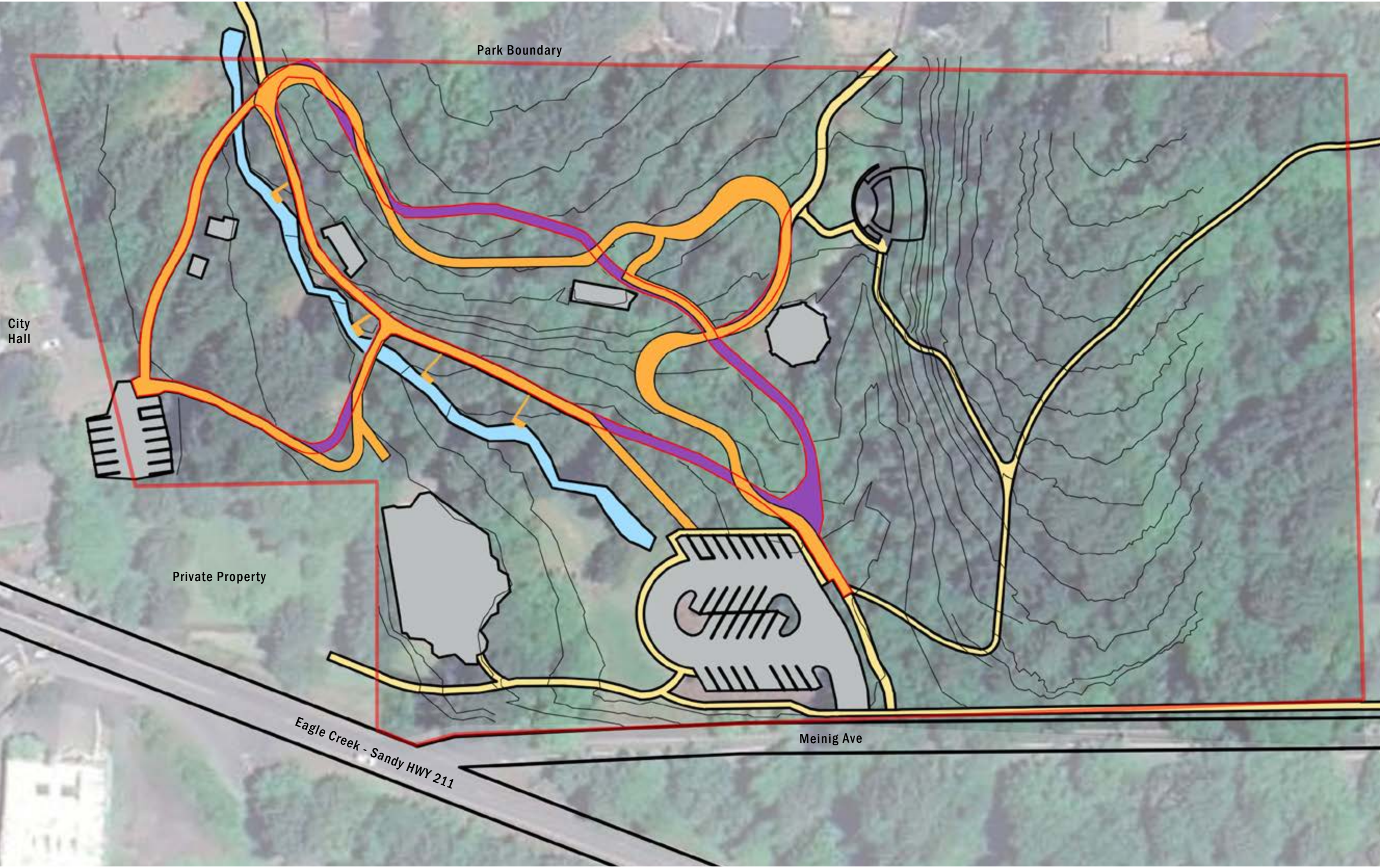


ISSUES

- Compromised by roots
- Not constructed to accommodate maintenance vehicles
- Inconsistent surfacing
- Lack of accessible routes through park to most destinations

IMPROVEMENTS


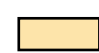

- Existing path to be removed
- Existing path to remain
- New path



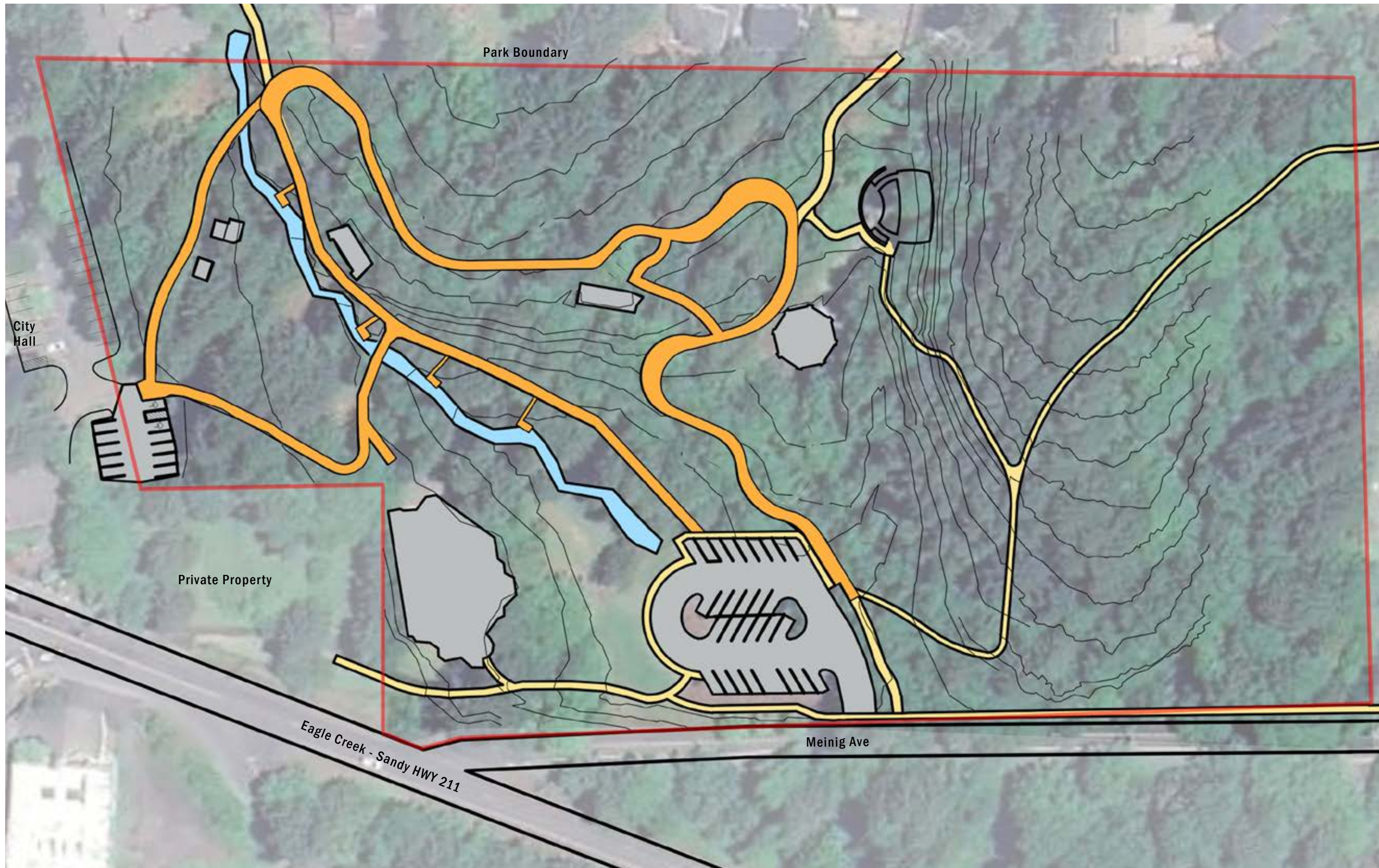
ISSUES

- Compromised by roots
- Not constructed to accommodate maintenance vehicles
- Inconsistent surfacing
- Lack of accessible routes through park to most destinations

IMPROVEMENTS

-  Existing path to be removed
-  Existing path to remain
-  New path




Focus Area 3 - Pathway and Trail System



ISSUES

- Compromised by roots
- Not constructed to accommodate maintenance vehicles
- Inconsistent surfacing
- Lack of accessible routes through park to most destinations

IMPROVEMENTS

-  Existing path to be removed
-  Existing path to remain
-  New path



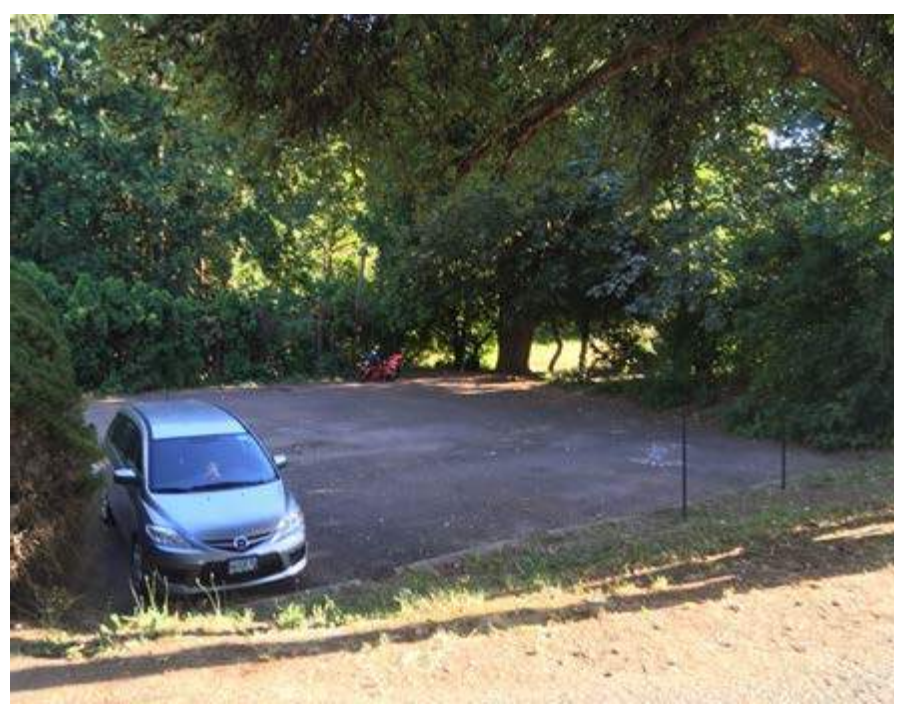
Previous Layout



Revised Plan Option



Parking Lot Improvements



- Replaces damaged asphalt pavement
- Formalizes parking spaces and creates 2 code-required accessible parking spaces
- Provides space for food cart setup to serve special events at the park
- Connects to reworked accessible pathways
- Updates landscape to match park planting
- Provides lighting and bollards at parking lot