



PARKS AND TRAILS ADVISORY BOARD MEETING

Wednesday, February 14, 2024 at 6:00 PM
via Zoom

AGENDA

THIS MEETING WILL BE HELD ONLINE VIA ZOOM:

Please use this link: <https://us02web.zoom.us/j/85290684685>

ROLL CALL

CHANGES TO THE AGENDA

PUBLIC COMMENT

The Parks Board Chair will call on each person when it is their time to speak. You will have 3 minutes to speak.

CONSENT AGENDA

1. Approval of January Minutes

NEW BUSINESS

2. Sarah McIntyre, Library Director, will speak in regards to a letter of support for a grant that would be used for a community outreach vehicle.

OLD BUSINESS

3. Review of Deer Point Park Concepts

STAFF UPDATES

ADJOURN

Americans with Disabilities Act Notice: Please contact Sandy City Hall, 39250 Pioneer Blvd. Sandy, OR 97055 (Phone: 503-668-5533) at least 48 hours prior to the scheduled meeting time if you need an accommodation to observe and/or participate in this meeting.



PARKS & TRAILS ADVISORY BOARD MEETING

Item # 1.

Wednesday, January 10, 2024 at 6:00 PM
via Zoom

MINUTES

THIS MEETING IS BEING HELD ONLINE VIA ZOOM:

<https://us02web.zoom.us/j/84264600830>

ROLL CALL

PRESENT

Ryan Aultman
David Breames
Alexandria Gale
Don Robertson
Kimberly Seigal
Will Toogood
Upekala Wijayratne

Staff Present:

Rochelle Anderholm Parsch, P&R Director
John Wallace, Recreation/Center Manager
Tiana Rundell, Parks & Facilities Manager
Chelsea Jarvis, Executive Assistant

Guest Presenters:

Kurt Lango, Lango Hansen Landscape Architects
Brian Martin, Lango Hansen Landscape Architects
Carly Boise, Lango Hansen Landscape Architects

CHANGES TO THE AGENDA

PUBLIC COMMENT

The Parks & Trails Advisory Board welcomes your comments at this time.

The Board Chair will call on each person when it is their turn to speak for up to three minutes.

CONSENT AGENDA

1. Approval of Minutes

Motion to approve minutes

Motion made by Toogood, Seconded by Aultman.

Voting Yea: Aultman, Gale, Robertson, Toogood, Wijayratne

(Breames & Seigal joined the meeting late and were not present for this vote)

NEW BUSINESS

2. Lango Hansen Landscape Architects will discuss Deer Point park.

Lango Hansen Landscape Architects present a slideshow relating to Deer Point park. Some constraints are mentioned such as the grade and location of current storm drains.

Some questions are asked such as how marshy the area is, if restrooms would be included, what the plan is for the blackberries, and the zoning of the adjacent property.

The Parks board was asked what amenities they would like to see- discussion ensued:

Disc golf was highly supported. It was mentioned that it would be a good attraction not currently offered in Sandy. It's also maintainable.

Pickleball was mentioned although noise concerns were a potential issue.

A 2nd smaller community garden came up as an idea.

Sound deadening could be turned into a potential feature.

A possible link to Tickle Creek could be an opportunity.

Another shelter would be good.

The natural area may not mix well with the highway noise but a trail could be a cool feature.

A suggestion was made to maintain and keep all the trees and blackberries.

A playground with drinking fountains, benches, and tables could be a nice addition.

A discussion on schedule and timeline followed this discussion.

OLD BUSINESS

STAFF UPDATES

Rochelle:

Demo of skate park starts very soon.

The Cedar Park site will be closed to the public for the remainder of the project.

Next week the Community Campus buildings will start to be deconstructed.

Sandy Bluff improvements- Bids close tomorrow, January 11th. This is for shelters and dog park reconfiguration. This project should be done by April/May 2024.

The contract for the construction of Cedar Park goes to council on Tuesday, Jan 16th. This park should be complete around this time next year.

John:

Cedar Park is the official name of the Community Campus Park.

Winterfest was a big success- almost 17,000 visits to the park this year during December.

Mountain Storm has begun- using approximately 6 gyms with around 30 teams.

Tiana:

Super proud of the parks team. They spent approximately 70 hours trouble shooting the Meinig park lights in December. They're currently 108 hours into light clean up. They're hoping to be able to catch up on other parks soon.

Picnic tables and shelters are on the way for the upgrades to Bluff Park.

Cedar Creek Trail- Glass is still an issue. A ribbon cutting to be announced soon. A portion of the lower part of the trail will be open soon however the top part of the trail will not due to the construction at Cedar Park.

ADJOURN

Americans with Disabilities Act Notice: Please contact Sandy City Hall, 39250 Pioneer Blvd. Sandy, OR 97055 (Phone: 503-668-5533) at least 48 hours prior to the scheduled meeting time if you need an accommodation to observe and/or participate in this meeting.

Dear Grants Committee,

We are writing in support of Sandy and Hoodland Libraries and their proposed Outreach Vehicle. As people who are passionate about Parks and Trails in our community, we believe this project has the potential to make a real impact. The Parks & Recreation Department (including Senior Services) already partners with the Library on a number of programs out in the Community, such as the Longest Day Parkway, Teen and Senior Egghunts, and the Tree Lighting. The addition of an outreach vehicle will allow for more partnership opportunities between the Library and Parks & Recreation.

We understand that the Sandy and Hoodland Libraries have a large service area and that many people without reliable transportation have difficulty traveling to the library to utilize their resources. Children specifically need additional support in their learning endeavors.

Staff of the Sandy and Hoodland Public Libraries have thought of an effective solution. By purchasing an outreach vehicle, and bringing it out to our beautiful Parks and Trails, as well as, City events, the library will be able to offer city information, computer resources, library programs, and materials to the entire community. Adults can gain valuable computer skills, have access to the Internet, and checkout library materials. Children can learn STEM and Early Literacy skills, and check out homework and pleasure reading.

The potential impact of this project is significant. Adults will have a greater ability to utilize the Internet and computer resources, as well as check out pleasure reading. Children who have access to STEM and literacy activities have a higher chance of success in school and in life. Through implementation of this project, we can expect our community to become stronger through the use of our shared resources.

We believe that an Outreach Vehicle is the right solution for our community. Sandy and Hoodland Libraries has a proven record of success with programs and has the experience and expertise to execute this project with excellence. We look forward to working with them to create great routes and stops for their vehicle. Thank you for considering this proposal. Your support will make a meaningful difference in the lives of our community members.

Sincerely,

An Outreach Vehicle for Sandy and Hoodland Libraries

A presentation by Library Staff
for the Parks and Trails Advisory
Board

Why an outreach vehicle?

- Sandy and Hoodland have a larger service area population than a number of LINCC Libraries, but have a lower % of library users and checkouts because of our significant square mileage.
- Libraries are once again getting bookmobiles on the road
 - Lake Oswego, Molalla, and Estacada all have bookmobiles
- Bring Library Services to where people are
 - Retirement homes and Senior Centers
 - Daycares, preschools, schools and parks
 - Community stops
 - Boring, Orient, Sandy, Rhododendron, Government Camp

How an outreach vehicle will be utilized

Digital Equity

- Teach computer classes
 - Started basic computer and basic Internet classes in April 2022, Microsoft Word in February 2023 and Google Drive on October 2023.
 - 122 people have signed up
- Make computers, printing services, and Internet available
 - FY2023 - 6,531 computer sessions and over 29,000 total pages printed in the library

Youth Services

- Storytime
 - Go to Daycares and Preschools
- STEM and literacy activities
 - Schools
 - Vista Apartments and Pioneer Mobile Home Court

Plus

Item # 2.

Did we mention
checking out
library materials?

Impacts of outreach vehicle in our community

- Increase kids early literacy activities
 - Storytimes
 - 1,000 Books Before Kindergarten
- Increase kids and teens STEM learning activities
 - Vista Apartments & Pioneer Mobile Home Park
 - Schools
- Increase # of computer sessions/computer class participation
- Increase # of library cardholders and regular library users

What you can do to help

- Write a letter of support from your organization
- Consider where/when would be good to park the vehicle
 - Fill out our survey when it is available (soon!)
- Talk about opportunities with your friends and neighbors
- Assist with Fundraising efforts

Deer Point Neighborhood Park

Site Plan Concepts - Parks & Trails Advisory Board

February 14, 2024





Highway 26 facing southeast



Highway 26 facing northwest



Meadow Ave facing north



Center of park facing HWY 26

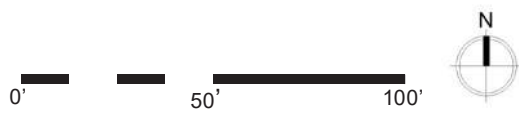


Meadow Ave facing south





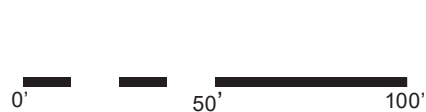
- PARK AMENITIES**
- 1** Playground
 - 2** Shelter
 - 3** Sport Court
 - 4** Open Lawn
 - 5** Shrubs and Groundcover





PARK AMENITIES

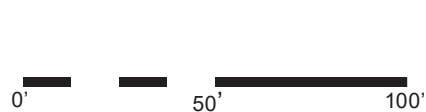
- 1** Playground
- 2** Shelter
- 3** Sport Court
- 4** Open Lawn
- 5** Shrubs and Groundcover

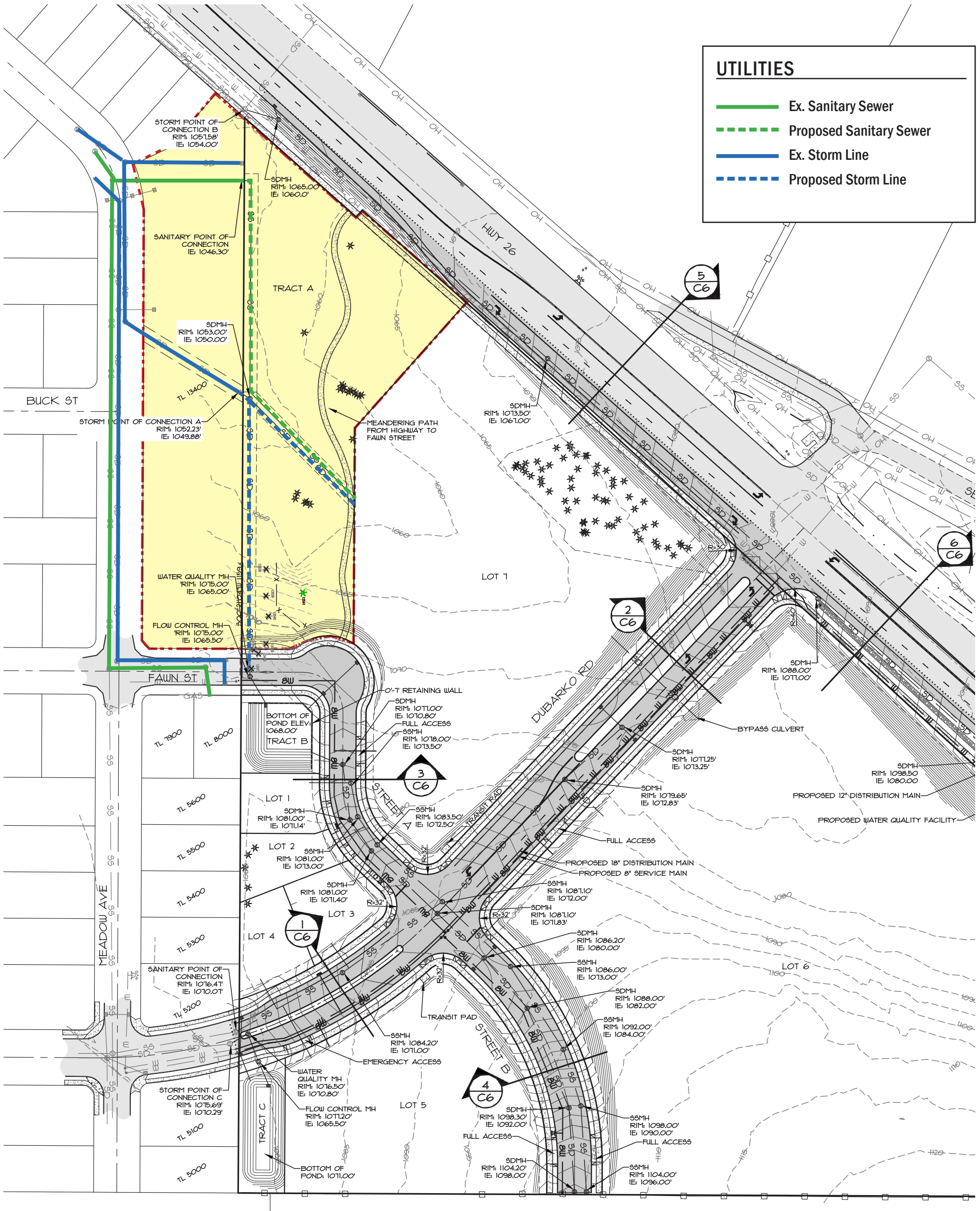




PARK AMENITIES

- 1** Playground
- 2** Sport Court
- 3** Open Lawn
- 4** Shrubs and Groundcover

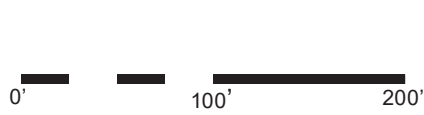




UTILITIES

- Ex. Sanitary Sewer
- - - Proposed Sanitary Sewer
- Ex. Storm Line
- - - Proposed Storm Line

| TREE NO. | SPECIES (COMMON NAME) | DBH (INCHES) | CONDITION | COMMENTS | TREATMENT |
|----------|-----------------------|--------------|-----------|-------------------------------------|-----------|
| 13538 | WESTERN REDCEDAR | 39 | GOOD | CODOMINANT AT 6' WITH INCLUDED BARK | REMOVE |
| 13539 | DOUGLAS-FIR | 32 | GOOD | MODERATELY ONE SIDED | REMOVE |
| 13540 | WESTERN REDCEDAR | 37,33 | GOOD | CODOMINANT AT 3' WITH INCLUDED BARK | REMOVE |





Option 1



Option 2



Option 3