



LIBRARY ADVISORY BOARD MEETING

Wednesday, February 07, 2024 at 6:00 PM
Sandy Public Library Community Room and via Zoom

AGENDA

TO ATTEND THE MEETING IN-PERSON:

Come to the Library Community Room - 38980 Proctor Blvd
Sandy, OR 97055

TO ATTEND THE MEETING ONLINE VIA ZOOM:

Please use this link: <https://us06web.zoom.us/j/84905444995>

Or by phone: (253) 215-8782; Meeting ID: 84905444995

ROLL CALL

1. Introduction of new Board members

PUBLIC COMMENT

APPROVAL OF MINUTES

- [2.](#) Approval of Minutes from December 6th, 2023

NEW BUSINESS

- [3.](#) Infographic Snapshot for 2023
- [4.](#) Presentation on outreach vehicle

OLD BUSINESS

5. Hoodland rent update
- [6.](#) Library District Advisory Committee (LDAC) update

STAFF UPDATES

ADJOURN

Americans with Disabilities Act Notice: Please contact Sandy City Hall, 39250 Pioneer Blvd. Sandy, OR 97055 (Phone: 503-668-5533) at least 48 hours prior to the scheduled meeting time if you need an accommodation to observe and/or participate in this meeting.



LIBRARY ADVISORY BOARD MEETING

Wednesday, December 06, 2023 at 6:00 PM
Sandy Public Library Community Room and Meinig Park

MINUTES

There will not be a zoom meeting this evening. Please attend in person. We will be having food and then heading to Meinig Park to view the Winterfest lights

ROLL CALL

PRESENT

Heather Michet
Kathleen Draine
Lynne Pollard
Bethany Shultz
Dale Hauff
Sarah McIntyre

ABSENT

Cheyenne Holliday
Dale Scobert
Cynthia Bowie
Kathleen Walker

PUBLIC COMMENT

APPROVAL OF MINUTES

1. Approval of Minutes from November 1st

Motion made by Draine to accept the minutes from November 1st as written, seconded by Shultz.

Voting Yea: Michet, Draine, Pollard, Shultz

OLD BUSINESS

2. Hoodland rent update

Library Board representatives Lynne Pollard and Kathleen Draine, City Manager Tyler Deems, Mayor Stan Pulliam, and Library Director Sarah McIntyre met with the County Administrator

Gary Schmidt, Board of County Commissioners Paul Savas and Mark Shull, as well as County Counsel and the Director of Transportation and Development on November 28.

At this meeting, Commissioner Shull suggested that he take a close look at the County Budget with Administrator Schmidt to see if they could come up with approximately \$25,000/year for 5 years. This would give the County time to get past its current building projects and look towards the future of Hoodland Library.

3. Library District Advisory Committee update

The Board of County Commissioners has an issues session scheduled for November 29th where they will discuss the questions brought forward by LDAC months ago, including use of library funds for capital expenditures.

STAFF UPDATES

NEW BUSINESS

4. View the light in Meinig Park

ADJOURN

Americans with Disabilities Act Notice: Please contact Sandy City Hall, 39250 Pioneer Blvd. Sandy, OR 97055 (Phone: 503-668-5533) at least 48 hours prior to the scheduled meeting time if you need an accommodation to observe and/or participate in this meeting.

Sandy / Hoodland Public Library Snapshot of 2023

January - December



Hoodland 7,239
Sandy 35,044

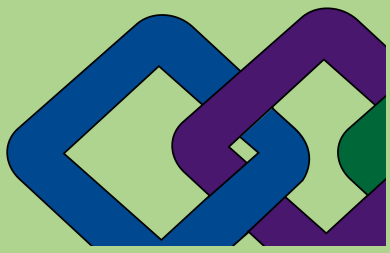
Physical checkouts



Hoodland 45,152
Sandy 232,691

Hold's Fulfilled

Hoodland 10,658
Sandy 51,195



Card Sign-up

Hoodland 264
Sandy 1,524

Total Programs
Sandy 489
Hoodland 83

Attendance
Sandy 10,842
Hoodland 964

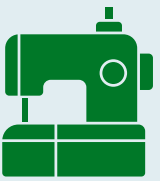
Our Top Programs

Trick or Treat Trail	1,179
Stocking Stroll	525
Shortest Day	500
Tree Lighting	500
Longest Day Parkway	404

Library of Things

Hoodland 80

Items most requested were:



Paper shredder 10
Sewing Machine 9
Pasta Machine 7



Sandy 867

Items most requested were:



WIFI Hotspot 103
Negatives & Slides to digital 37
VHS to DVD converter 36
VR Headset 33

Take & Make



Kids 1,431
Teens 929
Adult 1,372

*** Cards for Seniors
343 Received**

Mobile Printing



Patrons 325
Print jobs 1,522
Pages Printed 1,371

Hoodland

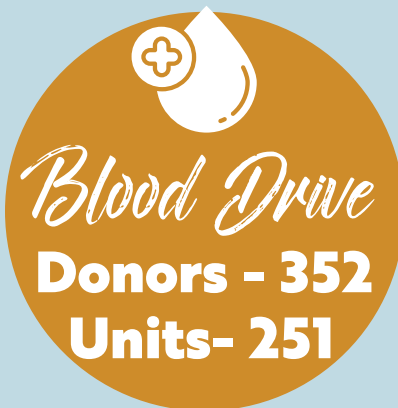
Printing

Print jobs 1,928
Pages Printed 3,171

Patrons 566
Print jobs 1,871
Pages Printed 5,335

Sandy

Print jobs 6,344
Pages Printed 23,236



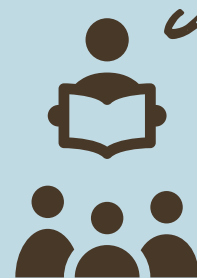
Blood Drive
Donors - 352
Units- 251



computer use
Sessions

Hoodland 1,188
Sandy 5,904

Storytime



Hoodland 617
Sandy 1,537
Virtual 1,322

Sandy / Hoodland Public Library Snapshot of 2023

January - December

Favorite Authors

ADULT FICTION AUTHORS

Sandy Hoodland

James Patterson James Patterson

C.J. Box Judith Jance

David Baldacci David Baldacci

Kaiu Shirai Stephen King

Teen Fiction

Sandy
Hoodland

Akira Toriyama

Kiera Cass

Hiro Mashima



Adults

Cooking

Biography

Psychology

Teens

Sociology

Medicine

Biography

Kids

Zoology

Biography

Mammals



Favorite NonFiction Subjects



Library of Things

	Sandy	Hoodland
Check outs	867	80
Average \$	\$100.51	\$66.84
Total value	\$87,142.17	\$5,347.20

Take & Make Kits

	Sandy	Hoodland
Check outs	3,118	640
\$ per kit	\$5	\$5
Total value	\$15,590.00	\$3,200.00

Social Media

Facebook (Friends) 1,647

Instagram 900



Value of Libraries

Overall	Sandy	Hoodland
Population	28,041	5,741
Value / Cap.	\$114.24	\$98.90
Regular Users	8,588	1,803
Value / User	\$373.02	\$314.91
Total value	\$3,203,477.97	\$567,780.10

i Lovelibraries.org/what-libraries-do/calculator

An Outreach Vehicle for Sandy and Hoodland Libraries

A presentation by Library Staff
for the Library Advisory Board

Why an outreach vehicle?

- Sandy and Hoodland have a larger service area population than a number of LINCC Libraries, but have a lower % of library users and checkouts because of our significant square mileage.
- Libraries are once again getting bookmobiles on the road
 - Lake Oswego, Molalla, and Estacada all have bookmobiles
- Bring Library Services to where people are
 - Retirement homes and Senior Centers
 - Daycares, preschools, schools and parks
 - Community stops
 - Boring, Orient, Sandy, Rhododendron, Government Camp

How an outreach vehicle will be utilized

Digital Equity

- Teach computer classes
 - Started basic computer and basic Internet classes in April 2022, Microsoft Word in February 2023 and Google Drive on October 2023.
 - 122 people have signed up
- Make computers, printing services, and Internet available
 - FY2023 - 6,531 computer sessions and 780 library users utilized our mobile printing service, over 29,000 pages printed

Youth Services

- Storytime
 - Go to Daycares and Preschools
- STEM and literacy activities
 - Schools
 - Vista Apartments and Pioneer Mobile Home Court

Plus

Item # 4.

Did we mention
checking out
library materials?

Impacts of outreach vehicle in our community

- Increase # of library cardholders and regular library users
- Increase # of computer sessions/computer class participation
- Increase kids early literacy activities
 - Storytimes
 - 1,000 Books Before Kindergarten
- Increase kids and teens STEM learning activities
 - Vista Apartments & Pioneer Mobile Home Park
 - Schools

What you can do to help

- Write a letter of support from your organization
- Consider where/when would be good to park the vehicle
 - Fill out our survey when it is available (soon!)
- Talk about opportunities with your friends and neighbors
- Assist with Fundraising efforts

DRAFT 1/2/2024 Letter addressed to Library Boards to sign petition to BCC

Re: Recent Decision by the BCC regarding possibly changing the Library District from just a Service District to one permitting capital expenditures

We ask your Board, collectively, or especially those members who represent the unincorporated residents within your Service Area to consider signing the following petition to the County Commissioners, sitting as the Library District Board. If the majority of your library board is in favor, please send us a note with the date of the vote approving the motion in support of the petition. If only individual members would like to sign the petition, they may contact us at: [email]

The undersigned [members of] individual library advisory boards in the Clackamas County Library District, ask the District Library Board to reconsider its decision on November 29, 2023, to consult only cities on the possible transformation of the Library District from a service district, as originally formed, into one permitting capital expenditures. That question should be put to the voters.

Referring that critical question to just city politicians immediately disenfranchises over 44% of the District's population, who provide over 45% of the District's revenue. Those 187,400+ residents do not and cannot vote for city politicians and have no leverage over their decisions. Your referral also ignores the outsized importance of the money those unincorporated residents contribute to City libraries: at 8 of the 13 libraries, **more than half** of the distributed District tax revenue comes from the unincorporated residents. Again, the use of that money is controlled only by city politicians and administrators, with no voter leverage available to the unincorporated contributors.

The Board should be asking ALL the taxpayers in the County whether any money collected from the Library District could now be used for capital purposes. County Counsel has confirmed to the Board that the District at its formation was a service district that could NOT use collected funds for capital purposes. You should not reconfigure the District in this fundamental way by just asking cities.

Put the question to the voters: Do voters want to allow cities to funnel District Revenue to improve, renovate or build city owned buildings, at the expense of the library services promised to the voters in 2008?

If you are not willing to ask County voters, then limit your action to clarifying that District Revenue cannot be used for capital purposes, consistent with the founding premise approved by the voters in 2008.

Library Service Areas - impact of funds provided by unincorporated resident population

(based on 2023-2024 current year tax receipt estimate [w/o prior interest & delinquencies])

Libraries	% of funding provided by <u>unincorp</u> residents	Out of 13 libraries:
Hoodland	100.00%	8 receive more than half of their funding from unincorporated residents
Oak Lodge	100.00%	
<u>Estacada</u>	80.13%	
Molalla	74.17%	
Sandy	66.37%	
Happy Valley	57.72%	
Gladstone	56.24%	
Milwaukie	54.36%	
Oregon City	33.47%	
<u>Canby</u>	33.47%	
<u>Wilsonville</u> **	9.27%	
West Linn**	7.55%	
Lake Oswego**	7.36%	
<u>[Tualatin]</u> ***	0.00%	
Total		

* per capita for each unincorporated resident is derived by taking the total tax collected from the assessed value within the unincorporated portion of the County (\$10,375,025) divided by the total number of unincorporated residents. (187,336) = just less than \$55.4 per unincorporated resident

** including allocation from Tualatin

*** Tualatin receives funds but does not operate a District Library