

THE VILLAGE OF



# RIDGWAY

## **PARK & RECREATION COMMISSION MEETING AGENDA**

**June 04, 2025 at 7:00 PM**

Ridgeway Community Center - Room 101/102 208 Jarvis Street, Ridgeway, WI 53582

---

### **CALL TO ORDER AND ROLL CALL**

### **CONFIRMATION OF OPEN MEETING**

### **MEETING AGENDA**

1. Meeting Agenda
2. Minutes

### **PUBLIC COMMENTS**

3. New Items

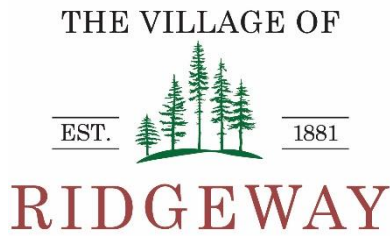
### **CORRESPONDENCE, ANNOUNCEMENTS, AND REPORTS**

4. Appoint new Chair
5. Farmers' Market updates
6. Community Center update
7. Dog Park update
8. Library updates
9. Veterans Memorial/Bricks update
10. Independence Day Planning updates

### **ITEMS FOR CONSIDERATION AND ACTION**

### **ADJOURNMENT**

*Any person(s) with a qualifying disability, as defined by the Americans with Disabilities Act, that requires the meeting or material at the meeting to be in an accessible location or format, must contact the Village Clerk at the address listed above or call 608-924-5881, prior to the meeting so that any necessary arrangements can be made to accommodate each request.*



## **PARK & RECREATION COMMISSION MEETING MINUTES**

**May 20, 2025 at 7:00 PM**

Ridgeway Community Center - Room 101/102 208 Jarvis Street, Ridgeway, WI 53582

---

### **CALL TO ORDER AND ROLL CALL**

Meeting called to order by Chair Butler at 6:56 pm.

PRESENT: Chair Brad Butler, Trustee Cynthia Niehaus, Trustee Julene Garner, Commissioner Melissa Hooks, Commissioner Tara Meckley, Marj Riniker-Administrative Services Specialist.

Not Present: Commissioner Michele Casper, Streets & Parks Superintendent Kevin Meckley

Minutes taken by M Riniker.

### **CONFIRMATION OF OPEN MEETING**

Riniker confirmed this was a properly noticed meeting posted on May 19, 2025, at the Ridgeway Community Center and the Village website, with notification sent via email/text to subscribers.

### **MEETING AGENDA**

Motion by C Niehaus, seconded by J Garner to approve the consent agenda as presented. Motion carried.

1. Meeting Agenda
2. Minutes

### **CORRESPONDENCE, ANNOUNCEMENTS, AND REPORTS**

3. Independence Day Planning

Went thru schedule of events. After discussion, all approved the schedule and will move forward with printing/advertising.

Discussed need for new volunteers to run 5K/2M and do the Chicken BBQ

Approved the bouncy houses, balloon artist, face painting and Doggy Derby expenses. Members were excited about new event.

Outstanding items were assigned amongst the commission.

Will send creative to advertising outlets to get that started.

Approved use of online sign up process. Discussed need for floater positions and will add those.

Will have Michele line up interviews.

B Butler mentioned possibility of a Dodgeville Student Liaison attending future Park & Rec meetings in an on-going basis.

**ITEMS FOR CONSIDERATION AND ACTION**

**ADJOURNMENT**

Motion by J Garner seconded by C Niehaus to adjourn at 8:24 pm. Motion carried.

DRAFT



# Square Straight Steel Pole

SSS

Item 7.

## PROJECT INFORMATION

JOB NAME	
FIXTURE TYPE	Square Straight Steel Pole
CATALOG NUMBER	
APPROVED BY	

## SPECIFICATIONS

**Pole Shaft:**  
Straight poles are 4", 5", or 6" square. Pole shaft is electro-welded ASTM-A595 Grade A steel tubing with a minimum yield strength of 55,000 psi. On Tenon Mount steel poles, tenon is 2-3/8" O.D. high-strength pipe. Tenon is 4-3/4" in length.

**Hand-Hole:**  
Standard hand-hole location is 12" above pole base. Hand-hole size is 4" x 6" and reinforced.

**Ground Lug:**  
Ground lug is standard.

**Duplex Receptacle:**  
Weatherproof duplex receptacle is optional.

**Anchor Bolts:**  
Poles are furnished with anchor bolts featuring zinc-plated double nuts and washers. Galvanized anchor bolts are optional. Anchor bolts conform to ASTM F 1554-07a Grade 55 with a minimum yield strength of 55,000 psi.

**Base:**  
ASTM-A36 hot-rolled steel plate with a minimum yield strength of 36,000 psi. Two-piece square base cover is optional.

**Ground Fault Circuit Interrupter:**  
Self-testing ground fault circuit interrupter is optional

**Finishes:**  
Baked-on polyester-powder finishing process which electrostatically applies and fuses a polyester powder to the pole. Provides a smooth and uniform finish to withstand extreme weather changes without cracking or peeling, and features a five-year limited warranty.

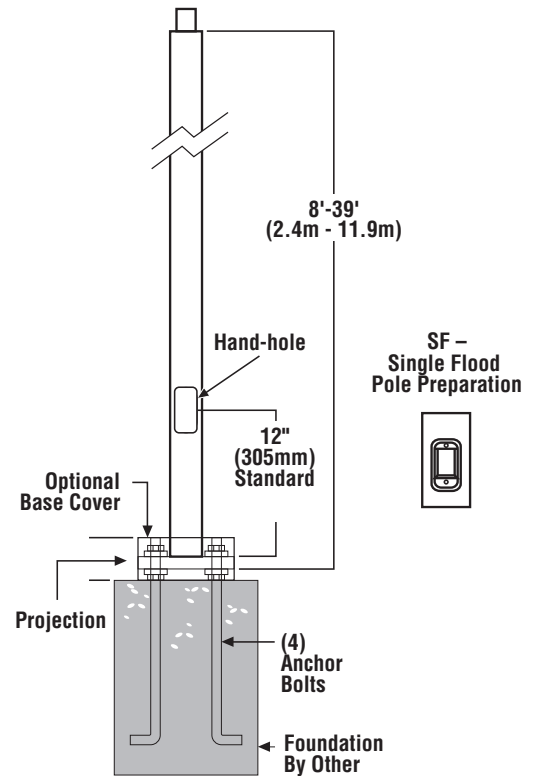
**Pole Vibration Damper:**  
A pole vibration damper is recommended in open terrain areas of the country where low steady state winds are common. Non-tapered poles and lightly loaded poles are more susceptible to destructive vibration if a damper is not installed.

**Listings:**  
UL Listed  
BAA/TAA Compliant

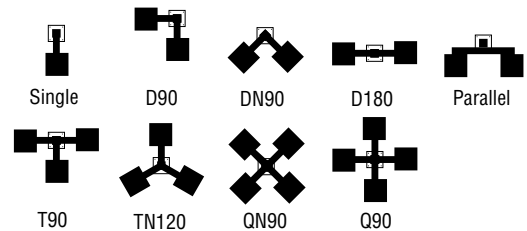


## DIMENSIONS

N = 2.375" O.D. x 4.75" Tenon



## FIXTURE CONFIGURATIONS



**ORDERING INFORMATION**

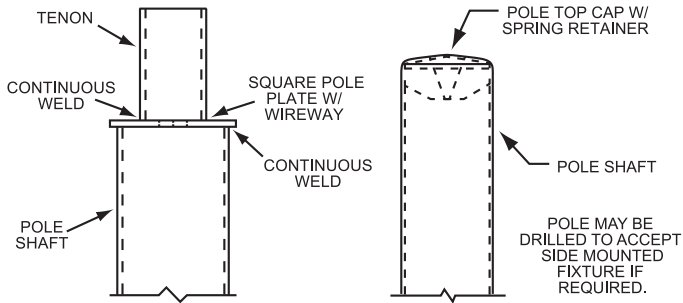
S	S	S	20	4	11	T		BZ			
SHAPE	SHAFT	STRUCTURE	HEIGHT (FT)	DIAMETER/WIDTH (IN)	GAUGE	TENON DETAIL	BASE DETAIL	COLOR	DROP SHIP	DRILL PATTERN	DRILL LOCATION
S = Square	S = Straight	S = Steel	12 = 12 ft 14 = 14 ft 15 = 15 ft 16 = 16 ft 18 = 18 ft 20 = 20 ft 25 = 25 ft 30 = 30 ft 35 = 35 ft 39 = 39 ft	4 = 4 in 5 = 5 in 6 = 6 in	11 = 11 Ga 07 = 7 Ga	T = Welded Blank = None	Blank = Anchor	BZ = Bronze WT = White SL = Silver BK = Black	DSLB = Drop Ship (Bolts ship separately) QSLB = Quick Ship* (Bolts ship separately) *12, 15, 20, 25 ft mt. ht.; 4" dia.; 11 ga.; drilled 4@90° only	Blank = SLPS/SLPM 0 = ORASEL	1 = 1 2 = 2 @ 90 3 = 2 @ 180 4 = 3 @ 90 5 = 4 @ 90

**ORDERING INFORMATION**

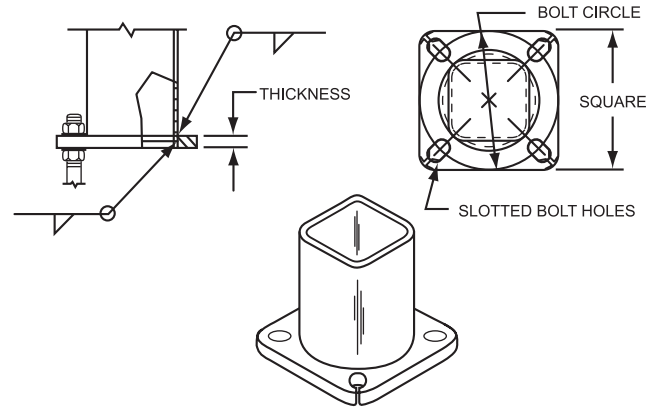
MOUNTING HEIGHT LENGTH (FT)	CATALOG NUMBER	SHAFT		POLE BASE			MAXIMUM LOADING									
		BASE O.D. (IN)	WALL THK. (GA)	GROSS WEIGHT (LBS)	BOLT CIRCLE RANGE	PLATE WIDTH (IN)	PLATE THICK (IN)	110 MPH	115 MPH	120 MPH	130 MPH	140 MPH	150 MPH	160 MPH	170 MPH	180 MPH
								EPA (FT²)	EPA (FT²)	EPA (FT²)	EPA (FT²)	EPA (FT²)	EPA (FT²)	EPA (FT²)	EPA (FT²)	EPA (FT²)
12	SSS12411BZ	4	11	90	8" - 11"	10.125	0.75	13.9	12.5	11.3	9.2	7.6	6.3	5.2	4.3	3.6
14	SSS14411BZ	4	11	105	8" - 11"	10.125	0.75	10.7	9.5	8.5	6.8	5.4	4.4	3.5	2.7	2.1
15	SSS15411BZ	4	11	113	8" - 11"	10.125	0.75	8.2	7.2	6.4	4.9	3.8	2.9	2.1	1.5	1.0
16	SSS16411BZ	4	11	120	8" - 11"	10.125	0.75	8.2	7.2	6.4	4.9	3.8	2.9	2.1	1.5	1.0
18	SSS18411BZ	4	11	135	8" - 11"	10.125	0.75	6.3	5.4	4.7	3.4	2.4	1.6	1	0.4	n/a
20	SSS20411BZ	4	11	150	8" - 11"	10.125	0.75	4.6	3.9	3.2	2.1	1.2	0.6	n/a	n/a	n/a
20	SSS20407BZ	4	7	200	8" - 11"	10.125	0.75	9.6	8.4	7.4	5.7	4.3	3.2	2.3	1.6	0.9
20	SSS20511BZ	5	11	180	9" - 11"	10.125	0.75	8.5	7.3	6.3	4.6	3.2	2.1	1.2	0.5	n/a
20	SSS20507BZ	5	7	250	9" - 11"	10.125	1.0	21.6	19.3	17.3	14	11.3	9.2	7.4	6	4.8
25	SSS25411BZ	4	11	188	8" - 11"	10.125	0.75	4.6	3.7	3	1.7	0.7	n/a	n/a	n/a	n/a
25	SSS25407BZ	4	7	250	8" - 11"	10.125	0.75	4.6	3.7	3	1.7	0.7	n/a	n/a	n/a	n/a
25	SSS25511BZ	5	11	225	9" - 11"	10.125	0.75	6.8	5.7	4.6	3	1.6	0.6	n/a	n/a	n/a
25	SSS25507BZ	5	7	313	9" - 11"	10.125	1.0	14.9	13.1	11.4	8.8	6.6	4.9	3.5	2.3	1.3
30	SSS30407BZ	4	7	225	8" - 11"	10.125	0.75	2.2	1.4	0.8	n/a	n/a	n/a	n/a	n/a	n/a
30	SSS30507BZ	5	7	375	9" - 11"	10.125	1.0	10.3	8.9	7.5	5.2	3.4	2	0.8	n/a	n/a
30	SSS30607BZ	6	7	462	12"	12	1.125	10.4	8.8	7.3	4.8	2.9	1.3	n/a	n/a	n/a
35	SSS35607BZ	6	7	539	12"	12	1.125	5.5	4.2	2.9	0.9	n/a	n/a	n/a	n/a	n/a
39	SSS39607BZ	6	7	539	12"	12	1.125	2.3	1.0	n/a	n/a	n/a	n/a	n/a	n/a	n/a

Actual performance data can vary depending on operating conditions. Specifications are subject to change without notice.

**POLE TOP DETAILS**

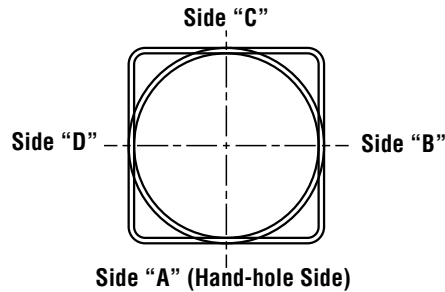


**POLE BASE DETAILS**



**DRILLING LOCATIONS**

Sides	A	B	C	D
Hand-hole	X			
Single	X			
D180		X		X
D90	X			X
DN90 <sup>1</sup>				
T90	X	X		X
TN120 <sup>2</sup>				
Q90	X	X	X	X
QN90 <sup>3</sup>				
Single FBO	X			
Double FBO		X		X



**NOTES:**

- 1 - Two locations will be 45° to the left and right of Side A.
- 2 - Other two locations will be 120° to the left and right of Side A.
- 3 - Two locations will be 45° to the left and right of Side A and two locations will be 135° to the left and right of Side A.

Consult factory for custom variations. Standard SF and DF pole preparations are located 3/4 of the height of the pole from the base, except on 20' poles. Maximum height for SF and DF pole preparations on 20' poles is 13' from the base.

Actual performance data can vary depending on operating conditions. Specifications are subject to change without notice.

