

THE VILLAGE OF



RIDGEWAY

PARK & RECREATION COMMISSION MEETING AGENDA

July 05, 2022 at 6:30 PM

Ridgeway Community Center - Room 101/102 208 Jarvis Street, Ridgeway, WI 53582

CALL TO ORDER AND ROLL CALL

CONFIRMATION OF OPEN MEETING

CONSENT AGENDA

- [1.](#) Minutes from 06.07.2022
- [2.](#) Minutes from 06.29.2022
3. Adoption of Agenda

CORRESPONDENCE, ANNOUNCEMENTS, AND REPORTS

ITEMS FOR CONSIDERATION AND ACTION

4. Farmers Market Updates
5. 4th of July Celebration Recap (Maggie/Michele)
6. Baseball Field Update (Maggie/Michele)
7. Youth and Home Talent Baseball Updates (Maggie/Michele)
- [8.](#) Dog Park Update
- [9.](#) Tree Planting Plan (Maggie)
10. Community Movie (Maggie)
11. Back to School Party (Maggie)
12. Halloween Planning

ADJOURNMENT

THE VILLAGE OF



RIDGEWAY

PARK & RECREATION COMMISSION MEETING MINUTES

June 07, 2022 at 6:30 PM

Ridgeway Community Center - Room 101/102 208 Jarvis Street, Ridgeway, WI 53582

CALL TO ORDER AND ROLL CALL

Meeting called to order by Chair Casper at 6:29 pm.

PRESENT: Michele Casper, Julene Garner, Megan James, John McSherry, Lexus Barnard, Streets & Parks Superintendent Tanner Cullen

ABSENT

Kellee Venden

CONFIRMATION OF OPEN MEETING

Johnson indicated this was a properly noticed meeting posted on June 6, 2022, at the Ridgeway Community Center, the Village website and Facebook page with notification sent via email/text to subscribers.

CONSENT AGENDA

Motion made by Garner, seconded by James to adopt the consent agenda as presented.

1. Minutes from 05.03.2022
2. Adoption of Agenda

CORRESPONDENCE, ANNOUNCEMENTS, AND REPORTS

3. Appointment of Member

Chair Casper welcomed new commission member, Lexus Barnard.

ITEMS FOR CONSIDERATION AND ACTION

4. Baseball Field Update (Maggie)

Johnson gave an update on the baseball field renovations. The Board of Trustees approved Midwest Athletic Fields' proposal to fix home plate, add more limestone to the infield, reset the foul poles, rebuild the pitcher's mound, and fix the lip where the outfield starts. Field updates are currently scheduled for the week of June 13th.

5. Youth and Home Talent Baseball Updates (Maggie)

Johnson gave an update on tee ball and home talent. Tee ball started May 22nd and is going well, according to Rock Reeson. Home talent's first game is June 9th at Argyle. Their first home game is scheduled for June 16th, but might be rescheduled due to field renovations.

6. Dog Park Update (Maggie)

Johnson gave an update on the dog park. DRH estimated they will have the fencing complete by the end of August. Cullen mentioned that he brush hogged and graded the space and Johnson noted she is working on ordering dog waste stations.

7. Internship Update (Maggie)

Johnson and Casper gave an update on the Park and Recreation Internship. The position will not be filled this year.

8. Concession Stand (Michele)

Casper mentioned she will be managing the concession stand and that the concession stand passed state inspection last month. The commission would also like to thank Lambert Keene for his time fixing the concession stand cooler.

9. Tree Planting Plan (Maggie)

Johnson presented the 2022 tree planting plan. Commission members made suggestions and recommended other tree species. The tree plan will be presented to the Board of Trustees on June 14th.

10. 4th of July Celebration Planning

Commission members continued discussing the 4th of July Celebration details. Johnson mentioned she created a Facebook event and post, but will continue to update both.

ADJOURNMENT

Motion made by McSherry, seconded by Barnard to adjourn at 8:20pm.



PARK & RECREATION COMMISSION MEETING MINUTES

June 29, 2022 at 6:30 PM

Village Park Shelter - 229 Hughitt St, Ridgeway, WI 53582

CALL TO ORDER AND ROLL CALL

Meeting called to order by Chair Casper at 6:33 pm.

PRESENT: Michele Casper, Kellee Venden, Julene Garner, John McSherry, Streets & Parks Superintendent Tanner Cullen

ABSENT: Megan James, Lexus Barnard

CONFIRMATION OF OPEN MEETING

Johnson indicated this was a properly noticed meeting posted on June 22, 2022, at the Ridgeway Community Center, the Village website and Facebook page with notification sent via email/text to subscribers.

CONSENT AGENDA

The minutes from June 7, 2022 and agenda will be approved at the July 5, 2022 meeting.

CORRESPONDENCE, ANNOUNCEMENTS, AND REPORTS

No announcements were made.

ITEMS FOR CONSIDERATION AND ACTION

1. July 3rd Timeline and Logistics

The Park and Recreation Commission discussed final details of the 4th of July Celebration. The celebration will be on Sunday, July 3rd starting at 11am and going until 11:30pm.

ADJOURNMENT

Motion made by McSherry, seconded by Venden to adjourn at 7:30pm.

BUDGET: \$1,600

Dog waste stations:

- \$264.99 each



Dog park rules sign:

- \$24
- Customized signs could cost \$50-\$100





Main Street/Blotz Court Intersection

No trees were removed from here but recommend planting:

Cluster of Redbuds nearer to end of the lot. MN Varietal, hardy. 20-30' T, 20-25' W



Shade Tree 25' from the bench –

Norway Spruce

50' T 25' W

Cold hardy, but tolerates hotter southern climates as well (extends south of Tenn., Northern TX/AL/MS, fast growing



700 BLOCK MAIN ST. (1) Removed

Recommend Planting:



Greenspire Linden

40-50' T 30-35' W

Shade Tree, fragrant yellow flowers in June, yellow fall foliage

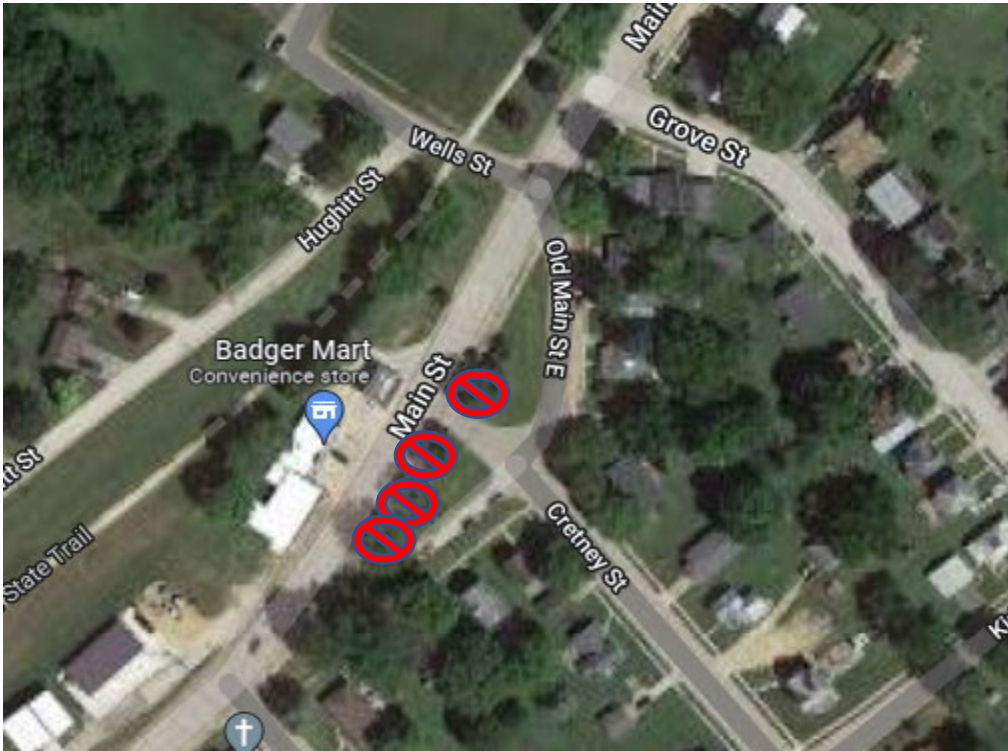
(would need to treat as a young tree if Japanese Beetles become a problem. \$35 would give you four treatments)

MN Redbuds nearer to end of the lot.

MN Varietal, hardy. 20-30' T, 20-25' W

Power lines run on the east side of this triangle and snow is piled here





300 and 400 BLOCK MAIN ST. Removed 3 Ash and 1 Elm

Recommend planting:

Across from Badgermart:



One: Ginkgo (nurseries typically only sell males, Aspen Ridge only carries males, the females have a foul odor in bloom)

slow growing, symmetrical, handsome, golden yellow in fall, free of disease/pests

50'

Another fast growing variety?

Possibly a larger tree? How will it get here? How much? How will it be planted? Is it hardy enough to acclimate and start growing right away?

Old Main Street East Triangle:



Japanese Tree Lilac

Doesn't spread/sucker, canopy is up, perfect for street/sidewalks, fragrant white blooms in spring, shorter for under the power lines

20'-25' T, 15-20' W



200 BLOCK MAIN ST. GREEN – removed 2 Ash

Recommend planting:



Northern Pin Oak

40'-75' T 40'-70' W

Adaptable, hardy, native, medium-growing, red in fall

Valley Forge Elm

Disease resistant, slow growing, yellow in fall

60'-80' T 60'W





PARK/HUGHITT ST. – removed 1 multi trunk Black Cherry along drive, 1 maple, 1 Ash

Recommend planting:

Shade trees near playground:



Sunburst Honeylocust

Adaptable, hardy, pest/disease free, filtered shade, small leaves disappear into grass, striking yellow foliage in fall

30'-70' T, 30-70' W

Pruning Recommendations:

Mature honey locust trees need little pruning except to remove dead or diseased branches, but until they are mature, you should prune them every five years or so to shape them as desired. This typically means keeping the canopy relatively open and airy. Branches that cross and rub can be susceptible to developing canker, which can

spread and kill a tree. The best time to prune is in late spring to fall when sap flow has lessened somewhat.



Bur Oak

Slow grower, 70-80' T, 80' W

Along Hughitt Street:



Japanese Tree Lilac

Doesn't spread/sucker, canopy is up, perfect for street/sidewalks, fragrant white blooms in spring,

20'-25' T, 15-20' W



600 BLOCK MAIN ST. GREEN - 1 Ash Removed

Recommended planting:



Star Magnolia Tree

Adaptable, slightly acidic soils, medium to fast growing, showy white fragrant flowers in spring, grows in oval/pyramidal shape

15'-20' T, 10'-15'

Meudt court/cemetery - 1 black cherry tree and 2 boxelder trees that were removed and stumps grinded.

Ternes Court - 1 oak tree was removed and stump grinded. There is a large courtyard between the road that use to go to 18/151 and the trail. This area is a bus stop. A Ginkgo, Linden, Pin Oak, or Maple would also be good here.

Budgeted \$25,000 for Tree Removal

Spent \$12,800

Available: \$12,200

Recommended Planting (APPROXIMATE) Cost:

(all #10 Size Trees about 5-8' tall, **any bigger and they don't grow/adapt as well**)

Redbuds – 5	\$875
Norway Spruce	\$250
Linden	\$200
Dogwood	\$200
Pin Oak	\$250
White Pine	\$100
Elm	\$200
Honeylocust	\$200
Bur Oak	\$250
Ginkgo	\$200
Jap Tree Lilac (7) – More for Main Street?	\$1,225
Star Magnolia	\$170
Ternes Court Tree?	

Estimated Total for planting as presented: \$4,120 (does not include trees in Ternes Court Courtyard area)

All indicated varietals can be obtained from Aspen Ridge in Mineral Point. They indicated they would work with us and offer an Arbor Day Discount of 15%. We would need to pick them up from Mineral Point.

Aaron Miller offered to dig the holes with a machine he could borrow (auger)

Everything but the shrubs recommended to be staked in high winds for the first couple growing seasons:

\$13 plus the fence post – extra \$18 tree (10 trees above = \$180)

Watering Bags:

[12 Pack 20 Gallon Tree Watering Bags](#): \$129.99

[Gemplers Tree Watering Bag, 12PK](#): \$247.99

[Tree Watering Bag, Polypropylene, 20 Gal.](#): \$16.39

[TreeGator Jr.](#): \$19.95

[DeWitt Donut Tree Watering Bag](#): \$16.99

With planting and maintenance by Public Works

*RECOMMENDED TO **WATER WEEKLY** FOR FIRST YEAR! **EVERGREENS** SHOULD BE WATERED UNTIL THE GROUND IS FROZEN SOLID AND CANNOT ABSORB ANY WATER*