



# Petersburg Borough

12 South Nordic Drive  
Petersburg, AK 99833

## Meeting Agenda Borough Assembly Regular Meeting

---

Monday, July 18, 2022

6:00 PM

Assembly Chambers

---

You are invited to a Zoom webinar.  
When: Jul 18, 2022 06:00 PM Alaska  
Topic: July 18, 2022 Regular Assembly Meeting

Please click the link below to join the webinar:

<https://petersburgak.gov.zoom.us/j/89534269857?pwd=bEfoelqxRXIwb2M1dkVyazNyRWM1dz09>

Passcode: 864522

By Telephone:  
(720) 707-2699 or (253) 215-8782

**Webinar ID:** 895 3426 9857

**Passcode:** 864522

1. **Call To Order/Roll Call**
2. **Voluntary Pledge of Allegiance**
3. **Approval of Minutes**
  - A. July 5, 2022 Regular Assembly Meeting Minutes**
4. **Amendment and Approval of Meeting Agenda**
5. **Public Hearings**
6. **Bid Awards**
7. **Persons to be Heard Related to Agenda**

*Persons wishing to share their views on any item on today's agenda may do so at this time.*
8. **Persons to be Heard Unrelated to Agenda**

*Persons with views on subjects not on today's agenda may share those views at this time.*
9. **Boards, Commission and Committee Reports**
10. **Consent Agenda**
11. **Report of Other Officers**

**A. Tongass National Forest Petersburg District**

Ranger Vernon "Ray" Born, the new District Ranger in Petersburg, will provide a report to the Assembly.

**12. Mayor's Report**

**A. July 18, 2022 Mayor's Report**

**13. Manager's Report**

**A. July 18, 2022 Manager's Report**

**14. Unfinished Business**

**15. New Business**

**A. Approval to Update Alaska Department of Transportation Needs List**

Manager Giesbrecht requests Assembly approval to update the ADOT Needs List as noted on the attached spreadsheet. Green denotes an addition of a project to the list; red denotes a request to ADOT to delete the project from the list.

**B. Purchase of High Pressure Valves for the Blind Slough Hydroelectric Project**

Utility Director Hagerman requests approval to purchase high pressure valves for the Blind Slough Hydroelectric project from B&K Valves as recommended by project engineer McMillen Jacobs.

**C. Approval of Letter to Coast Guard Regarding a Formal Lease Agreement**

Assembly Member Tremblay requests approval of a letter to the Coast Guard to authorize Manager Giesbrecht to pursue a formal lease agreement for housing units to help meet housing needs of first responders and other individuals in Petersburg.

**D. Approval of Mountain View Manor Director Hire**

Manager Giesbrecht recommends the hire of Derrick Casey to fill the MVM Director position at an annual salary of \$80,000.

**16. Communications**

**A. Correspondence Received Since June 30, 2022**

**17. Assembly Discussion Items**

**A. Housing Task Force**

Assembly Member Meucci requested this discussion item.

**B. Boroughwide Abandoned Vehicles**

Assembly Member Kensinger requested this discussion item.

**C. Assembly Member Comments**

**D. Recognitions**

**18. Adjourn**



# Petersburg Borough

12 South Nordic Drive  
Petersburg, AK 99833

## Meeting Minutes Borough Assembly Regular Meeting

---

Tuesday, July 05, 2022

12:00 PM

Assembly Chambers

### 1. Call To Order/Roll Call

Vice Mayor Stanton Gregor called the meeting to order at 12:00 pm.

#### PRESENT

Assembly Member Bob Lynn  
Assembly Member Chelsea Tremblay  
Assembly Member David Kensinger  
Vice Mayor Jeigh Stanton Gregor  
Assembly Member Jeff Meucci  
Assembly Member Thomas Fine-Walsh

#### EXCUSED

Mayor Mark Jensen

### 2. Voluntary Pledge of Allegiance

The Pledge was recited.

### 3. Swearing in of Sergeant Ayriss

Officer Andrew Ayriss was sworn in as Police Sergeant for the Petersburg Police Department.

### 4. Approval of Minutes

#### A. June 20, 2022 Assembly Meeting Minutes

The June 20, 2022 Assembly Meeting Minutes were unanimously approved.

Motion made by Assembly Member Meucci, Seconded by Assembly Member Lynn. Voting Yea: Assembly Member Lynn, Assembly Member Tremblay, Assembly Member Kensinger, Vice Mayor Stanton Gregor, Assembly Member Meucci, Assembly Member Fine-Walsh

### 5. Amendment and Approval of Meeting Agenda

The Agenda was approved as submitted.

Motion made by Assembly Member Meucci, Seconded by Assembly Member Tremblay. Voting Yea: Assembly Member Lynn, Assembly Member Tremblay, Assembly Member Kensinger, Vice Mayor Stanton Gregor, Assembly Member Meucci, Assembly Member Fine-Walsh

**6. Public Hearings**

There were no public hearings.

**7. Bid Awards**

There were no bid awards.

**8. Persons to be Heard Related to Agenda**

*Persons wishing to share their views on any item on today's agenda may do so at this time.*

Brenda Louise, representing herself, spoke about her concerns related to Ordinances #2022-08, #2022-09, and #2022-10. She would like to know which properties the Ordinances are referring to.

**9. Persons to be Heard Unrelated to Agenda**

*Persons with views on subjects not on today's agenda may share those views at this time.*

No views were shared.

**10. Boards, Commission and Committee Reports**

No reports were shared.

**11. Consent Agenda**

There were no consent agenda items.

**12. Report of Other Officers**

**A. Petersburg Medical Center**

PMC CEO Phil Hofstetter reported the following:

1) The work session with the Assembly and Hospital Board held on June 14th went well. The geo tech and environmental studies for the new hospital sites are moving forward. A funding application has been submitted to the State.

2) Last week the Hospital Board met and passed the hospital budget. There are staffing challenges and supply prices have increased.

3) The annual PMC Foundation Paddle Battle fundraiser will be held on August 6th. They have added a Pedal Battle this year as well. Go to the Petersburg Medical Center website for more information.

**13. Mayor's Report**

**A. July 5, 2022 Mayor's Report**

Vice Mayor Stanton Gregor read his report into the record.

**14. Manager's Report**

**A. July 5, 2022 Manager's Report**

Manager Giesbrecht read his report into the record, a copy of which is attached and made a permanent part of these minutes.

**15. Unfinished Business**

**A. Ordinance #2022-08: An Ordinance Proposing an Amendment to Section 14.02A (Services to be Provided Only by Service Area) of the Home Rule Charter of the Petersburg Borough, and Directing that the Proposed Charter Amendment be Submitted to the Qualified Voters of the Borough - Third Reading**

By unanimous roll call vote, the Assembly approved Ordinance #2022-08 in its third and final reading.

Motion made by Assembly Member Meucci, Seconded by Assembly Member Tremblay.

Voting Yea: Assembly Member Lynn, Assembly Member Tremblay, Assembly Member Kensinger, Vice Mayor Stanton Gregor, Assembly Member Meucci, Assembly Member Fine-Walsh

**B. Ordinance #2022-09: An Ordinance Proposing an Amendment to Section 19.03A (Personal Financial Interest and Nepotism) of the Home Rule Charter of the Petersburg Borough, and Directing that the Proposed Charter Amendment be Submitted to the Qualified Voters of the Borough - Third Reading**

By unanimous roll call vote, the Assembly approved Ordinance #2022-09 in its third and final reading.

Motion made by Assembly Member Meucci, Seconded by Assembly Member Tremblay.

Voting Yea: Assembly Member Lynn, Assembly Member Tremblay, Assembly Member Kensinger, Vice Mayor Stanton Gregor, Assembly Member Meucci, Assembly Member Fine-Walsh

**C. Ordinance #2022-10: An Ordinance Proposing an Amendment to Section 11.13E (Purchasing; Contracting) of the Home Rule Charter of the Petersburg Borough to Allow Borough Employees and Officials to Participate in Borough Property Sales when Conducted by Competitive Outcry Auction, and Directing that the Proposed Charter Amendment be Submitted to the Qualified Voters of the Borough - Third Reading**

By unanimous roll call vote, the Assembly approved Ordinance #2022-10 in its third and final reading.

Motion made by Assembly Member Meucci, Seconded by Assembly Member Tremblay. Voting Yea: Assembly Member Lynn, Assembly Member Tremblay, Assembly Member Kensinger, Vice Mayor Stanton Gregor, Assembly Member Meucci, Assembly Member Fine-Walsh

**16. New Business**

**A. Appointment of an Assembly Member to Facilitate Assembly Meetings of July 18th, August 1st and August 15th.**

Assembly Member Lynn was appointed to serve as Mayor Pro Tem for the July 18, August 1st and August 15th meetings.

Motion made by Assembly Member Tremblay, Seconded by Assembly Member Lynn. Voting Yea: Assembly Member Lynn, Assembly Member Tremblay, Assembly Member Kensinger, Vice Mayor Stanton Gregor, Assembly Member Meucci, Assembly Member Fine-Walsh

**17. Communications**

**A. Correspondence Received Since June 16, 2022**

**18. Assembly Discussion Items**

**A. Assembly Member Comments**

Assembly Member Tremblay reported that the Early Childhood Education Task Force has had their first meeting. Anyone who is interested can contact her for details. The housing group has been meeting several times a month. Everyone is welcome and anyone who is interested in attending should contact her for more information. Assembly Member Meucci reported that the SE Alaska Sea Otter Stakeholder Working Group has completed a Sea Otter survey and is now in the process of going through the data. A report will be available in March 2023.

**B. Recognitions**

Assembly Member Tremblay thanked all the volunteers and everyone who helped make Petersburg’s 2022 Fourth of July celebration a success.

**19. Adjourn**

The meeting was adjourned at 12:40 p.m.

Motion made by Assembly Member Tremblay, Seconded by Assembly Member Kensinger. Voting Yea: Assembly Member Lynn, Assembly Member Tremblay, Assembly Member Kensinger, Vice Mayor Stanton Gregor, Assembly Member Meucci, Assembly Member Fine-Walsh

**Mayor's Report  
July 18, 2022 Assembly Meeting**

- 1. Seeking Letters of Interest:** The Petersburg Borough is accepting letters of interest from citizens who wish to serve the community by filling one of the vacant seats on the following Borough Boards/Commissions until the October 2022 Municipal Election:

Planning Commission – two vacant seats

Parks & Recreation Advisory Board – one vacant seat

Letters of interest should be submitted to Clerk Thompson at the Borough offices located at 12 S. Nordic Drive; by sending to PO Box 329, Petersburg, AK 99833; or by emailing to [dthompson@petersburgak.gov](mailto:dthompson@petersburgak.gov)





**Borough Manager's Report  
Assembly Meeting 18 July 2022**

- ❖ Water Staff recently performed some maintenance on the City Creek Dam spillway.
- ❖ We continue to see failures of aging infrastructure around Petersburg. A planning meeting is scheduled for July 13<sup>th</sup> to discuss renewal projects for water distribution and wastewater collection piping.
- ❖ Wastewater Staff has been servicing cruise ships to accept black water on a repurposed street washing truck. Loads of wastewater are being hauled to the treatment plant as needed by the visiting ships.
- ❖ Blind Slough project progress:
  - An application for a non-capacity license amendment has been issued to FERC in Washington DC.
  - Project plans continue to come together with information being received from the equipment provider.
  - An award for specialty high pressure valves will be in front of the Assembly soon to allow for issuance of a PO that is above the Manager's spending authority.
- ❖ The annual FERC inspection at Crystal Lake Dam went well, with the inspector pleased about the condition of the project. Items of concern are generally minor and easily addressed.
- ❖ Bob Ziemke, Power Plant Mechanic, is retiring at the end of July with 25+ years of service to the department and the Borough. Bob has kept the diesel generators and hydro facility in top condition during his career and has responded to countless power outages in service to the community. Please join me in thanking Bob for his outstanding career and work efforts over the last 25 years. Congratulations to Bob on his retirement! A retirement gathering will be held in his last week of work with more information provided later.
- ❖ Summer STREAM & Baby Bookworms, the library's youth summer programs, wrapped up on July 10. 135 kids participated in the program, logging 78,750 minutes of reading and completing 1,423 educational challenges.
- ❖ The area in front of the library adjacent to the large landscaping bed in the front has been paved by Bob Olson & his crew. The project was funded by donations to the library. A few benches and planters are planned.
- ❖ A fountain/bottle filler is being installed in the library foyer.
- ❖ Tara will be out of the office July 20-Aug 13. Any updates to the website that are needed should wait until she returns.

- ❖ Chase Kirby accepted the conditional job offer for the police officer position. He's currently looking for housing opportunities in Petersburg.
- ❖ The Police Department is looking into requirements, pricing, and options for digital/live scan fingerprinting. Live scan fingerprinting would be a benefit to the entire Petersburg community.
- ❖ Reid Brothers has made good progress on the Public Works Yard Culvert Replacement and is on track to finish on schedule and within the Fish & Game permit window.
- ❖ The Streets crew is still clearing debris from the landslide that occurred during the weekend of June 25-26, which resulted in a discharge of blue clay material into the Hammer Slough Creek basin. The slide area has been stabilized and creek flow re-established. We are working with an engineer, DEC and permitting authorities to develop a plan for permanent repairs.
- ❖ The crew repaired a water main break near the intersection of 3<sup>rd</sup> and Fram Streets.
- ❖ We continue to make good headway on the backlog of building maintenance work orders. At present Sam and Jim are working to address some longstanding maintenance needs at the Clausen Museum.
- ❖ Lifeguard Course scheduled for July 29<sup>th</sup> – 31<sup>st</sup>. Must attend all 3 days and online portion before 1<sup>st</sup> day of class. If interested, please contact Scott Burt at Parks and Rec ASAP for online course voucher.
- ❖ New Volleyball net/pads will be arriving this week. Check out our schedule and come join us for some VB Fun!
- ❖ Parks and Recreation would like to thank Petersburg Rotary for purchasing and installing the new ADA Walkway Mat (Mobi-Mat) at the Sandy Beach Playground, making it more accessible for all mobility needs. Check it out – it is 100% Recycled and recyclable, UV, and rot resistant, life expectancy of 10+ yrs., easy maintenance, can be left out during winter months, and manufactured in USA. Thank you, Petersburg Rotary!
- ❖ The Aquatic Center is still expecting some smaller repairs to finalize our repair project. We will carry out these smaller projects with the least amount of schedule disruption as possible. Thank you for your patience!

## Petersburg Borough Capital Project Requests

Project Title	Est. Project Cost	Funding Potentially Secured	Funding shortfall	Capsis Y/N	Needs List	Congressionally Directed Spending	Priority
<b>Harbor Department, Borough launch ramps and remote docks (in priority order)</b>							
Scow Bay Haul out & Wash down Pad	\$ 7,240,000	\$ 500,000	\$ 6,740,000	Y		Y	5
Papke's (parking lot, dock, floats and ramp) Estimate.	\$ 6,400,000		\$ 6,400,000	Y		Y	4
South Harbor Maintenance Dredge	12,000,000	5,700,000	\$ 4,600,000	N			6
North Harbor - sheef pile and parking	\$ 2,530,000	\$ -	\$ 2,530,000	Y			
Scow Bay Boat Harbor	\$ 62,000,000		\$ 62,000,000	Y			
Harbor Maintenance Shop upgrade (if the Petro building is not acquired)	\$ 700,000		\$ 700,000	Y			
South Harbor Utility Float Reconstruction	\$ 400,000	\$ -	\$ 400,000	Y			
Harbor Office/Shower/Restroom facility redesign and reconstruction	\$ 500,000		\$ 500,000	Y			
Banana Point facilities, including launch ramp, breakwater, and access road			\$ -	N		Y	7
South Harbor Ramp Replacement (ADA ramps)	\$ 2,000,000	\$ 200,000	\$ 1,800,000	Y	Y	Y	14
South Harbor Parking Lot	\$ 250,000		\$ 250,000	N			
Purchase of private land adjacent to Harbor	\$ 900,000		\$ 900,000	Y			
Increase South Harbor Launch Ramp Capacity & Parking	\$ 1,580,000	\$ -	\$ 1,580,000	Y			
Berthing Dolphin at Petro Dock	\$ 400,000	\$ -	\$ 400,000	Y			
<b>Parks and Recreation Department (in priority order)</b>							
Aquatic Center Refurbishment - \$3M (painting, mechanical, control systems, etc)	\$ 3,000,000	120,000	2,880,000	Y			9
Eagles Roost Stair Replacement (or ADA option would be about \$500K)	\$ 45,000		\$ 45,000	Y			
Playground equipment for IRA II	\$ 60,000		\$ 60,000	Y			
Lighting for Ballpark and Ice Rink	\$ 125,000		\$ 125,000	Y			
Expansion of Weight Room Facility	\$ 150,000		\$ 150,000	Y			
Climate Controlled storage building near the Community Center	\$ 150,000		\$ 150,000	Y			
Story Poles for Sandy Beach Park	\$ 160,000		\$ 160,000	Y			
Trail Kiosks with trail guides and local interest information	\$ 40,000		\$ 40,000	Y			
Historical and Education signs along trails and at parks	\$ 30,000		\$ 30,000	Y			
Sandy Beach bike/walking trail			\$ -	N			
Severson's to Airport Trail			\$ -	N			
Public Address System for Community Center	\$ 35,000		\$ 35,000	Y			
Mathisen Fishing Pier	\$ 1,350,000	\$ 150,000	\$ 1,200,000	Y			
<b>Public Works Department (in priority order)</b>							

Item 15A.



<b>Wastewater Department (in priority order)</b>									
Pump station 4 Upgrade and Force Main Replacement	\$	2,000,000	\$	330,000	\$	1,670,000	N	Y	15
Wastewater SCADA system	\$	542,500	\$	42,500	\$	500,000	N		
Pump station 3 Upgrade	\$	650,000			\$	650,000	N		
Lake Street Sewer Main	\$	300,000			\$	300,000	N		
Skylark Pump station Rehabilitation	\$	550,000			\$	550,000	N		
Rasmus Enge Bridge Sewer Main project	\$	250,000			\$	250,000	N		
<b>Power and Light Department (in priority order)</b>									
Blind Slough Hydro Rehabilitation	\$	7,227,635	\$	727,635	\$	6,500,000	Y		10
Scow Bay Generator 2	\$	1,450,000	\$	50,000	\$	1,400,000	Y		11
AMI Infrastructure Project	\$	360,000	\$	20,000	\$	340,000	N		
24.9 Rebuild - Airport 2400 Conversion (in-house)	\$	162,000	\$	-	\$	162,000	N		
Downtown Streetlights (in-house)	\$	220,000	\$	195,000	\$	25,000	N		
Storage Yard Relocation - Storage Sheds (2)	\$	125,000	\$	118,316	\$	6,684	N		
EMD 16 Overhaul	\$	250,000			\$	250,000	N		
<b>Petersburg Medical Center (in priority order)</b>									
Petersburg Medical Center Replacement - Get to Construction Ready Status	\$	16,000,000	\$	8,000,000	\$	8,000,000	Y	Y	2
Emergency Room Doors	\$	40,000	\$	25,000	\$	15,000	N		
<b>Public Safety and Support (not in priority order)</b>									
Petersburg Mental Health- ADA Renovations/Totem Arms	\$	1,000,000			\$	1,000,000	Y		
Shooting Range Structure Rehabilitation	\$	50,000	\$	-	\$	50,000	Y		
Shooting Range Trap & Skeet Equipment Upgrades	\$	25,000	\$	-	\$	25,000	Y		
Shooting Range Boardwalk Improvements	\$	30,000	\$	-	\$	30,000	Y		
<b>Sanitation (in priority order)</b>									
Fire Sprinkler System Replacement - Baler	\$	75,000			\$	75,000	N		
Recycling drop off Center	\$	20,000			\$	20,000	N		
Enviroack Car Disposal System	\$	25,000			\$	25,000	N		
Waste Oil Storage System Upgrades	\$	20,000			\$	20,000	N		
Landfill Fencing repairs/replacement	\$	50,000			\$	50,000	N		
Storage Quonset Hut Replacement	\$	150,000			\$	150,000	N		
Baler Roof Replacement	\$	200,000			\$	200,000	N		
Sanitation Security Upgrades (camera and gate)	\$	25,000			\$	25,000	N		
<b>Community Development (in priority order)</b>									
Subdivision Build out for workforce housing - Airport Subdivision							N		8
Fram Street Lots buildout							N		

GREEN - SHOULD THESE BE ADDED TO THE NEEDS LIST?

RED - ASSEMBLY SHOULD DECIDE IF THIS ITEM SHOULD DELETED FROM THE NEEDS LIST

Item 15A.


---

---

**MEMORANDUM**

---

---

**TO:** MAYOR JENSEN AND BOROUGH ASSEMBLY  
**FROM:** KARL HAGERMAN, UTILITY DIRECTOR   
**SUBJECT:** AWARD RECOMMENDATION – BLIND SLOUGH HYDRO VALVE ORDER  
**DATE:** 7/13/2022  
**CC:** STEVE GIESBRECHT, BOROUGH MANAGER

PMPL and McMillen Jacobs and Associates have been working steadily on the Blind Slough Hydro Refurbishment project. As part of that work, various long lead time items that would normally be included in a construction contract are being ordered directly by the department in this year to circumvent any delay issues that currently exist with many industrial supply chains.

To that end, the project is in need of various high pressure butterfly valves for the hydro bypass line that feeds water to the Crystal Lake Hatchery in the event that the hydro is shut down for maintenance. Due to the highly specialized nature of these valves and the specifications that were developed by the engineering team, the engineers directly solicited quotes for the valves from vendors/manufacturers that were known to produce equipment that would meet the project needs.

Two quotes were received and were evaluated by the engineering team for adherence to the specifications. McMillen Jacobs is recommending that an award be made to B&K Valves for a cost of \$61,692.00. The second quote that was received was over \$100,000 for the specified valves.

**PMPL agrees with the recommendation of the Engineer and requests approval to issue a purchase order to B&K Valves for an amount not to exceed \$61,692.00.**

Thank you for your consideration.

**From:** [Moughamian, Matt](#)  
**To:** [Karl Hagerman](#)  
**Cc:** [Jarrett, Don](#)  
**Subject:** Recommendations for PO on 3 BFVs and Shipping for Blind Slough Bypass Pipelines  
**Date:** Wednesday, July 13, 2022 6:58:33 AM  
**Attachments:** [B&K Quote - Isolation Butterfly Valves for Burrough of Petersburg AK.pdf](#)

---

Karl

We have received final responses on our questions from **B&K Valves** relating to the three (3) new butterfly valves (V-200, V-201, and V-202) – and we are recommending that the City issue a PO to B&K Valves for:

- \$3,549 for V-200 valve, 12” dia by ValMatic (Series 2000/1C16SV BFV, AWWA Class 150B)
- \$20,813 for V-201, 12” dia valve by Orton (Series MV Triple Eccentric Butterfly, AWWA Class 300 Flanged Ends, w/ Gearbox and Handwheel Operator)
- \$32,830 for V-202, 12” dia valve by Orton (Series MV Triple Eccentric Butterfly, AWWA Class 300 Flanged Ends, w/ Gearbox and SAR10.2 Electric actuator by Auma )
- \$4,500 shipping (ground UPS)

**Total PO Amount = \$61,692.00**

I suggest including the entire Quote and info package pdf that is attached – with your PO

I will attach the other quote from Rocky Mtn Valve on a separate email

Let me know if you have questions

Thanks

Thanks

**Matt Moughamian, PE\***

**McMillen Jacobs Associates**

Sr. Project Mgr; Water Supply & Treatment  
 (\*registered in AK, ID, WA)

1471 Shoreline Drive, Suite 100, | Boise, ID 83702

(208) 985-1532      Boise office (direct)

(208) 830-2955      Cell

[moughamian@mcmjac.com](mailto:moughamian@mcmjac.com)



Quoted by: Sandi Watts  
 P: (916) 699-0152 E: [swatts@bkvalves.com](mailto:swatts@bkvalves.com)

**B&K Valves and Equipment - Northern California:**  
 3432 Swetzer Road, Suite A & B  
 Loomis, CA 95650

**B&K Valves and Equipment - Southern California:**  
 7040 Avenida Encinas, Suite 104  
 Carlsbad, CA 92011

**PROJECT:** Isolation Butterfly Valves for Burrough of Petersburg, AK

**BID DATE:** 7/8/2022 - Quote Valid for 30 Days

**NOTES:** *\*Quoted material represents a mix of import and domestic items and is not per American Iron & Steel or Buy American requirements.*

**TO:** McMillen Jacobs Associates

**POINT OF CONTACT:** Matt Moughamian

**E-Mail/Phone:** [moughamian@mcmjac.com](mailto:moughamian@mcmjac.com) / 208.830.2955

LINE ITEM	QTY	SIZE	DESCRIPTION	ACTUATOR TYPE	VALVE TAG #	\$ UNIT COST	\$ TOTAL COST
1	1	12"	Val-Matic Series 2000/1C16SV Butterfly Valve, AWWA Class 150B/125# Flanged Ends, Ductile Iron Body, 304SS Shaft, Ductile Iron Disc w/EPDM Resilient Seat, 316SS Bolts & Body Seat Ring, Buna-N V-Type Packing, Lined & Coated w/12-20 mils Fusion Bond Epoxy, 150 PSI CWP	TNA w/Handwheel	V-200	\$3,549.00	\$3,549.00



2	1	12"	<b>Orton Series MV Tripple Eccentric Butterfly Valve, AWWA Class 300 Flanged Ends, Carbon Steel ASTM A216-16 Body, 17.4PH Shaft, ASTM A351 -16 Stainless Steel Shaft, High Density Graphite Packing, ASTM A193 B8M Steel Bolts w/Heavy Hex Nuts, Jotun 2-Coat Epoxy Primer</b>	Gearbox w/Handwheel	V-201	\$20,813.00	\$20,813.00
3	1	12"	<b>Orton Series MV Tripple Eccentric Butterfly Valve, AWWA Class 300 Flanged Ends, Carbon Steel ASTM A216-16 Body, 17.4PH Shaft, ASTM A351 -16 Stainless Steel Shaft, High Density Graphite Packing, ASTM A193 B8M Steel Bolts w/Heavy Hex Nuts, Jotun 2-Coat Epoxy Primer</b>	Gearbox w/Auma EMO	V-202	\$32,830.00	\$32,830.00
4	1		<b>Freight to Alaska</b>			\$4,500.00	\$4,500.00
						<b>Total</b>	<b>\$61,692.00</b>

*B&K Valves & Equipment, Inc. is a Certified Small Business Enterprise in California*

**Bid Notes:**

- 1: No Taxes Included
- 2: Freight is estimated
- 3: Price Includes only the products referenced above and may vary subject to verification of quantity, product description, and dimensions.
- 4: Installation, Startup, Field Testing, Training, and other on-site services not included in quoted price.
- 5: Anchors and Spare Parts are not included in Quoted Price.
- 6: Submittals 1 week after purchase order is received.
- 7: Seat Test within 50 miles of District HQ not included.
- 8: Manufacture rep services are available at \$2400/day.
- 9: Factory Witness Testing and associated expenses not included.
- 10: **Lead Time TBD (after release to production with approved submittals):**

**Val-Matic butterfly valves are fully AWWA C504 compliant and utilize a mechanically retained seat on disc with a 316 stainless steel body seat. A mechanically retained seat on disc offers the same performance and functionality as seat on body, with the added benefit to the owner of being easily and economically replaced in the field with simple tools.**

## B&K VALVES & EQUIPMENT

### Terms & Conditions

- PAYMENT TERMS:** Net 30 days from date of invoice, with approved credit.
- ALL PRICES:** Prices do not include any Federal, State, local taxes or fees.
- FREIGHT:** Not Included, FOB ex-works factory unless otherwise stated specifically in the quote.
- ORDERS:** Orders accepted by the factory may not be cancelled, or shipment deferred without advance written consent of the factory. These orders shall be subject to cancellation charges.
- RETURNS:** Will be at the discretion of the Factory. Applicable returns will only be accepted by the factory if the shipping label states a return authorization number issued by the factory. A re-stocking charge shall apply to all returns. Return freight will be the customers' responsibility to arrange.
- SPECIAL MATERIALS:** Products manufactured of special materials of construction cannot be returned or the order cancelled.
- DELIVERY:** All products will be shipped as quickly as possible from the factory upon receipt of the customer's Purchase Order or, when possible, on the date specified by the customer within reason. We will not be responsible for delays in shipping due to conditions beyond our control.
- CLAIMS:** Any claims for shortage or damaged products must be made in writing within five (5) days after receipt of shipment.
- WARRANTY:** Manufactures standard Warranty will apply; a copy will be supplied upon request.



HOME	>
PROFILE	>
PRODUCTS	>
STOCKIST	>
SALES CONTACTS	>
SERVICES	>
APPLICATIONS	>
LOCATIONS	>
NEWS	>
CAREERS	>
ETHICS AND COMPLIANCE	>
PRIVACY POLICY	>
CONTACT US	>

## PRODUCTS

| MV Series | VF Series | MR Series | DS Series | TF Series | NR Series

### Triple Eccentric Metal Seated Valves

#### MV SERIES

##### FEATURES AND BENEFITS:

- Metal to metal sealing
- Triple eccentric quarter-turn design
- Torque seated
- Bi-directional tight shutoff
- Zero leakage
- Non-rubbing seating
- Inherently fire safe and fire tested



##### TYPICAL APPLICATIONS:

- Process fluids
- Hydrocarbons
- Steam/Geothermal steam
- Hot gas/Sour gas (NACE)
- Oxygen, Hydrogen
- Blow down
- Sulfur recovery
- Acid, Caustic, Chloride
- Abrasive service

##### TEMPERATURE LIMITS

From -253°C (-423°F) up to +818°C (+1600°F)

##### PRESSURE LIMITS

From Full Vacuum up to +450 Bar (2200 psi)

##### PRODUCTION RANGE

- ND 2" - 160" ANSI Cl. 150
- ND 2" - 80" ANSI Cl.300
- ND 3" - 80" ANSI Cl. 600
- ND 6" - 48" ANSI Cl. 900
- ND 6" - 24" ANSI body in ANSI Cl. 1500
- ANSI Cl. 2500 with ANSI Cl.900 trim

##### BODY STYLE

- Double flanged ISO 5752
- Double flanged ANSI B 16-10 (gate)
- Wafer & Lugged API 609
- Butt-Weld.

##### RATING

- NP 6-10 - 16 - 25
- ANSI Cl. 150 - 300 - 600 - 900 - 1500 - 2500

##### MATERIALS

- LCB, LC3
- Duplex
- Superduplex
- Monel
- Hastelloy
- 254 SMO
- Alloy steel WC6, WC9
- Inconel
- Alloy 20
- Aluminium Bronze
- Titanium.

##### APPLICABLE STANDARDS

**Design:** ANSI B16.34 / ASME VIII

**Face to face:** API/ISO/ANSI

**Flange:** ANSI/ISO/DIN/UNI/JIS  
**Testing:** ZERO leakage  
**Fire Test:** BS 6755 - API 607 fourth Ed.

[<< return to products](#)

[top ...^](#)

 Orton

Whilst every effort has been made to ensure content is correct the company cannot be held responsible for any errors/omissions. All rights reserved 2009. [Click for legal notice](#)

**From:** [Sandi Watts](#)  
**To:** [Moughamian, Matt](#)  
**Cc:** [bwall@bkvalves.com](mailto:bwall@bkvalves.com)  
**Subject:** Response - Isolation Butterfly Valves for Burrough of Petersburg AK  
**Date:** Wednesday, July 13, 2022 8:22:24 AM  
**Attachments:** [image001.png](#)  
[VM-LSA TNA with Handwheel.pdf](#)  
[Coating Data Sheet.pdf](#)

**CAUTION:** This email was received from an external source

Good morning Matt.

Below is the factory response for clarification. Per Ben & Matt's discussion we quoted 316SS disc on the triple offset butterfly valves. These have a carbon steel body and are lined with fusion bonded epoxy. Also attached is the data sheet on the coating for reference. Please let us know if you have any questions.

- **For Valve V-200**, Please see the attached TNA drawing.
- **For Valve V-201**, can you pls add on the quote that the CWP pressure will be ~540 psig. Does this valve come with some type of Fusion Bonded Epoxy coating – and not just a primer?  
 Thanks for clarifying  
 [ORTON Reply]: We quoted 12" with pressure rating ANSI Cl.300: we added the note on the quote that we considered a CWP of 540 psi.  
 We considered valve body in carbon steel, with internal fusion bonded epoxy lining. External surface of the body is painted as per our standard painting cycle ST-PC1 described in the quotation.  
 The disc is in Stainless steel, and as such it doesn't need to be epoxy lined.
- **For Valve V-202**, can you pls add on the quote that the CWP pressure will be ~540 psig. Does this valve come with some type of Fusion Bonded Epoxy coating – and not just a primer?  
 Thanks for clarifying  
 [ORTON Reply]: We quoted 12" with pressure rating ANSI Cl.300: we added the note on the quote that we considered a CWP of 540 psi.  
 We considered valve body in carbon steel, with internal fusion bonded epoxy lining. External surface of the body is painted as per our standard painting cycle ST-PC1 described in the quotation.  
 The disc is in Stainless steel, and as such it doesn't need to be epoxy lined.
- **For Valve V-202**, other quotes I received were working on the assumption that the Elect Motor Operator would be an Auma Series SAR07 actuator running on 480 VAC, 3-phase power for outdoor service. Can you pls provide a bit of info on the quote for the Auma EMO that you all are planning on using. We would like the ability to do some minor throttling on this high-perf butterfly from about 55% open to 80% open or so.  
 [ORTON Reply]: please see attached the technical description of the quoted electric motor.  
 The quoted AUMA model is SAR 10.2 with power supply 3ph/480V/60Hz. The quoted

actuator is suitable for outdoor service, however please note that we considered a minimum ambient temperature of -29°C (this limit is given by valve material, that is carbon steel, suitable up to -29°C, but also to electric motor, suitable up to -30°C). We confirm it is possible to perform throttling, through an analog input: there is an adaptive positioner with 0/4-20mA input for position setpoint.

Kind Regards,

**Sandi Watts**

**B&K Valves & Equipment, Inc.**

[www.bkvalves.com](http://www.bkvalves.com)

916-699-0152 mobile

866-999-3955 office

866-999-3955 fax

[swatts@bkvalves.com](mailto:swatts@bkvalves.com)





HOME	>
PROFILE	>
PRODUCTS	>
STOCKIST	>
SALES CONTACTS	>
SERVICES	>
APPLICATIONS	>
LOCATIONS	>
NEWS	>
CAREERS	>
ETHICS AND COMPLIANCE	>
PRIVACY POLICY	>
CONTACT US	>

## PRODUCTS

| MV Series | VF Series | MR Series | DS Series | TF Series | NR Series

### Triple Eccentric Metal Seated Valves

#### MV SERIES

##### FEATURES AND BENEFITS:

- Metal to metal sealing
- Triple eccentric quarter-turn design
- Torque seated
- Bi-directional tight shutoff
- Zero leakage
- Non-rubbing seating
- Inherently fire safe and fire tested



##### TYPICAL APPLICATIONS:

- Process fluids
- Hydrocarbons
- Steam/Geothermal steam
- Hot gas/Sour gas (NACE)
- Oxygen, Hydrogen
- Blow down
- Sulfur recovery
- Acid, Caustic, Chloride
- Abrasive service

##### TEMPERATURE LIMITS

From -253°C (-423°F) up to +818°C (+1600°F)

##### PRESSURE LIMITS

From Full Vacuum up to +450 Bar (2200 psi)

##### PRODUCTION RANGE

- ND 2" - 160" ANSI Cl. 150
- ND 2" - 80" ANSI Cl.300
- ND 3" - 80" ANSI Cl. 600
- ND 6" - 48" ANSI Cl. 900
- ND 6" - 24" ANSI body in ANSI Cl. 1500
- ANSI Cl. 2500 with ANSI Cl.900 trim

##### BODY STYLE

- Double flanged ISO 5752
- Double flanged ANSI B 16-10 (gate)
- Wafer & Lugged API 609
- Butt-Weld.

##### RATING

- NP 6-10 - 16 - 25
- ANSI Cl. 150 - 300 - 600 - 900 - 1500 - 2500

##### MATERIALS

- LCB, LC3
- Duplex
- Superduplex
- Monel
- Hastelloy
- 254 SMO
- Alloy steel WC6, WC9
- Inconel
- Alloy 20
- Aluminium Bronze
- Titanium.

##### APPLICABLE STANDARDS

**Design:** ANSI B16.34 / ASME VIII

**Face to face:** API/ISO/ANSI



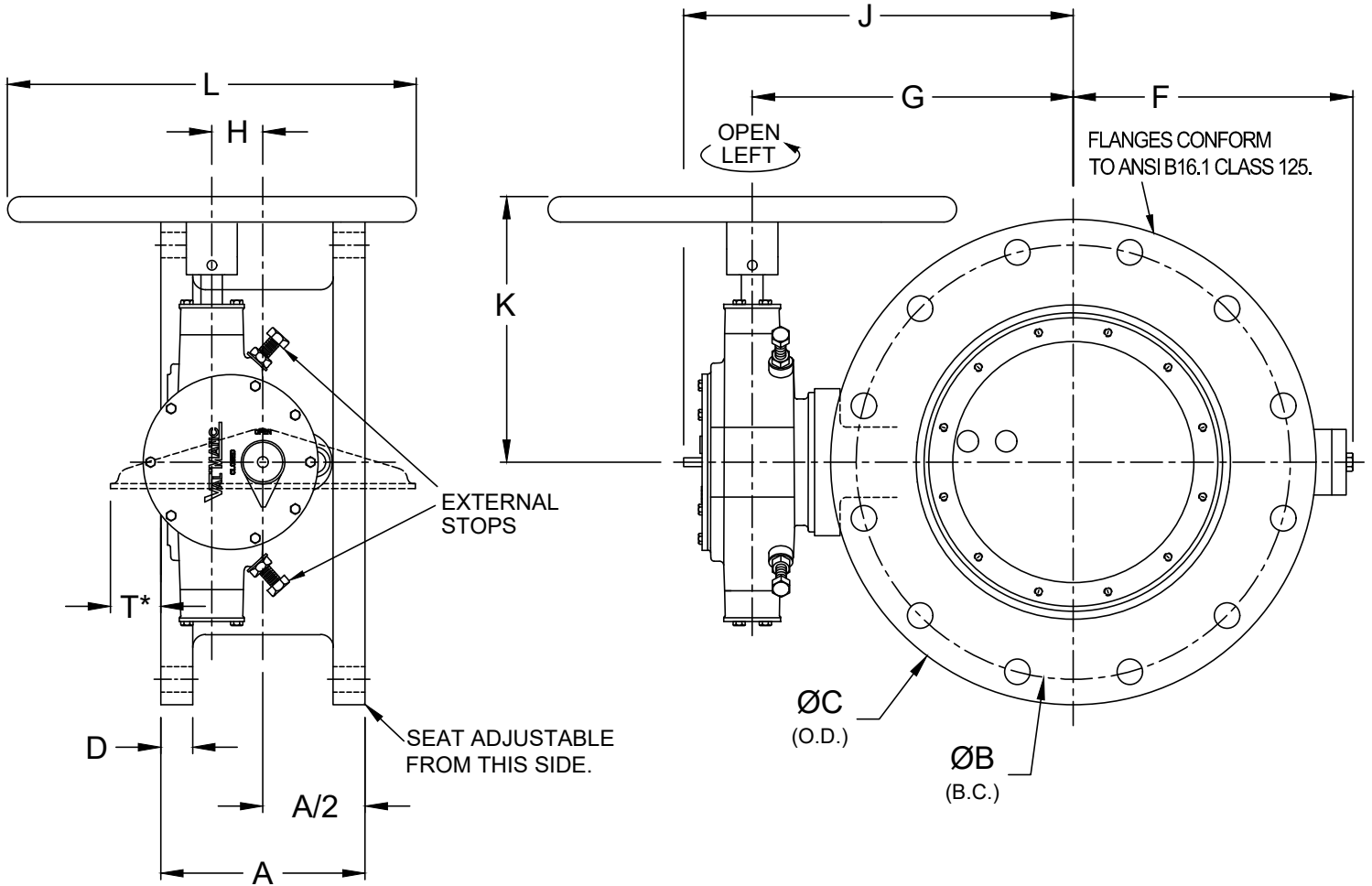
**Flange:** ANSI/ISO/DIN/UNI/JIS  
**Testing:** ZERO leakage  
**Fire Test:** BS 6755 - API 607 fourth Ed.

[<< return to products](#)

[top ...^](#)

 Orton

Whilst every effort has been made to ensure content is correct the company cannot be held responsible for any errors/omissions. All rights reserved 2009. [Click for legal notice](#)



VALVE DRAWN TO SCALE.  
 \*DISC SHOWN ROTATED 90°

COLD WORKING PRESSURE 150 PSI

**DIMENSIONS, INCHES**

VALVE SIZE	AWWA C504 CLASS	A	B	C	D	F	G	H	J	K	L	T*	TURNS TO OPEN	NO. OF BOLTS	BOLT SIZE	ACTUATOR SIZE	SHPG WT.
12	150B	8.00	17.00	19.00	1.25	11.1	12.6	2.0	15.4	10.4	16	1.94	20	12	7/8	LS-2A	270

150B FLANGED BUTTERFLY VALVE WITH TRAVELING NUT ACTUATOR, HANDWHEEL, EXTERNAL CLOSE STOPS AND POSITION INDICATOR

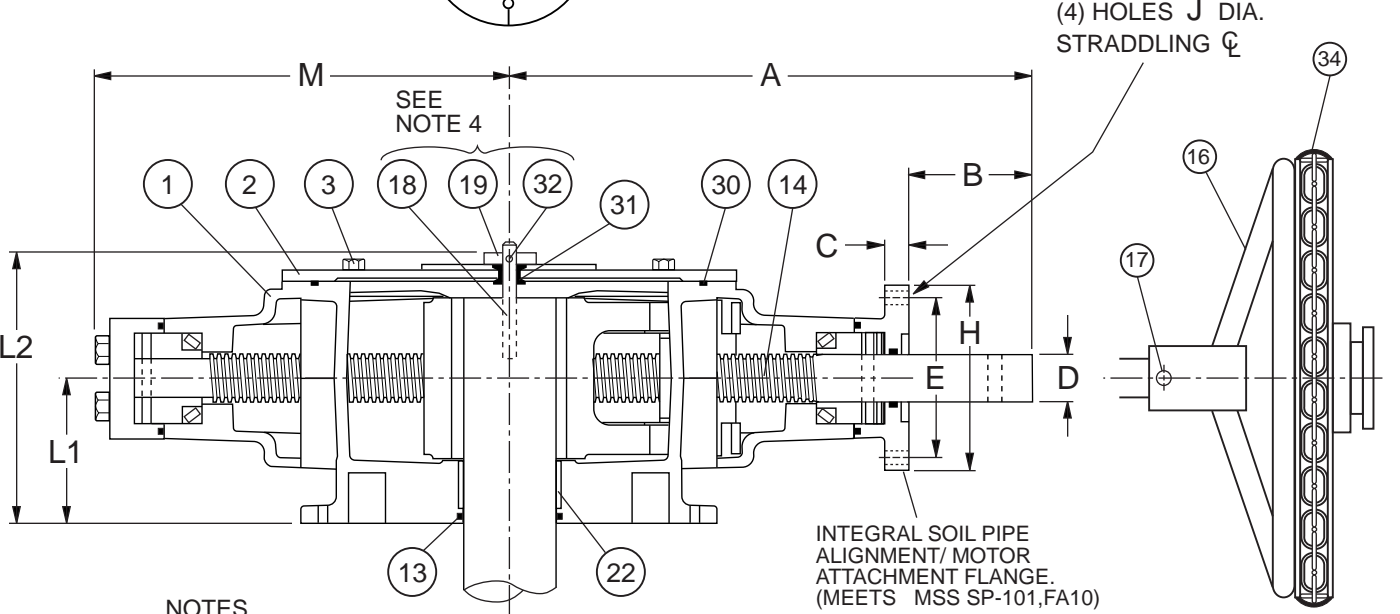
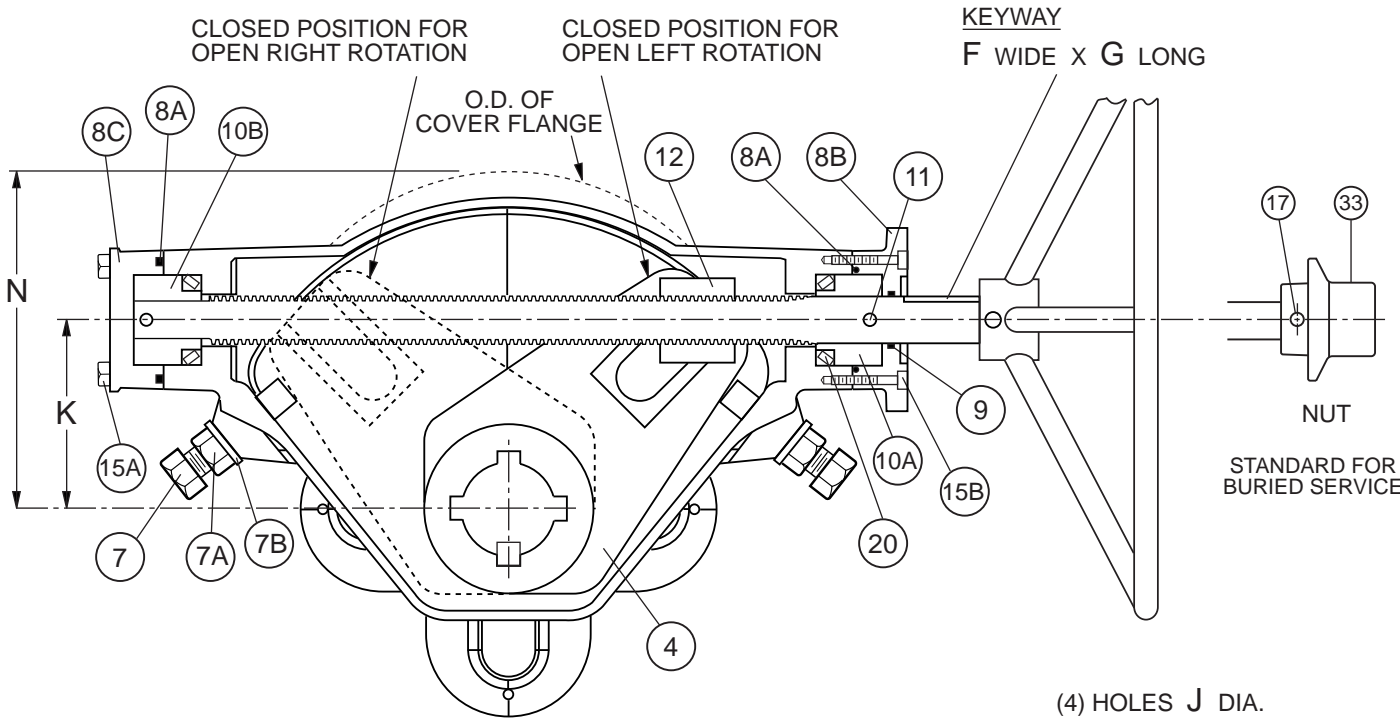
DATE 8-11-20

DRWG. NO.

VMC-2012



VALVE AND MANUFACTURING CORP.



**NOTES**

1. THE DIRECTION OF OPENING MAY BE REVERSED BY PULLING KEY WITH THE VALVE IN THE CLOSED POSITION, CYCLING ACTUATOR 90°, AND THEN REINSERTING KEY AS SHOWN BY DOTTED LINES.
2. ACTUATOR MEETS AWWA C504, LATEST REVISION.
3. SEE DRAWING NO. VM-LS1A-M FOR STANDARD MATERIALS OF CONSTRUCTION.
4. FOR BURIED OR SUBMERGED SERVICE, UNIT PACKED WITH GREASE, NO INDICATION.

DIMENSION, INCHES														
ACT. SIZE	A	B	C	D	E	F	G	H	J	K	L1	L2	M	N
LS-1A	7.83	2.52	0.50	1.00	4.00	0.25	2.00	4.88	0.44	1.50	2.06	4.56	5.53	3.66
LS-2A	8.71	2.52	0.50	1.00	4.00	0.25	2.00	4.88	0.44	2.00	2.44	5.13	6.40	4.22
LS-3A	12.06	3.25	0.50	1.25	4.00	0.25	2.75	4.88	0.44	3.50	3.56	6.94	9.09	6.94
LS-4A	13.81	3.25	0.50	1.25	4.00	0.25	2.75	4.88	0.44	5.00	3.81	7.25	10.84	9.13

Revised 5-19-11

**TRAVELING NUT ACTUATOR**

DATE 8-22-08

TRAVELING NUT ACTUATORSIZES LS-1A THROUGH LS-4A

<u>PART NO.</u>	<u>PART NAME</u>	<u>MATERIAL</u>
1	HOUSING	DUCTILE IRON ASTM A536, GRADE 65-45-12
2	HOUSING COVER	DUCTILE IRON ASTM A536, GRADE 65-45-12
3	COVER BOLTS	STAINLESS STEEL T316
4	LEVER	DUCTILE IRON ASTM A536, GRADE 65-45-12
7	STOP BOLT	PLATED STEEL
7A	LOCK NUT	PLATED STEEL
7B	STOP BOLT THREAD SEAL	PLATED STEEL WITH BUNA-N
8A	END CAP O-RING	BUNA-N
8B	END CAP (FOR SOIL PIPE ALIGNMENT OR MOTOR ATTACHMENT)	DUCTILE IRON ASTM A536, GRADE 65-45-12
8C	END CAP (BLIND END)	DUCTILE IRON ASTM A536, GRADE 65-45-12
9	STEM O-RING	BUNA-N
10A	STEM COLLAR (INPUT END)	ALUMINUM BRONZE (SIZES LS-1A & LS-2A) CARBON STEEL (SIZES LS-3A thru LS-4A)
10B	STEM COLLAR (BLIND END)	ALUMINUM BRONZE (SIZES LS-1A & LS-2A) CARBON STEEL (SIZES LS-3A thru LS-4A)
11	COLLAR PIN	ALLOY STEEL
12	CROSSHEAD	ALUMINUM BRONZE
13	SHAFT O-RING	BUNA-N
14	STEM	HIGH TENSILE STEEL (NICKEL PLATED EXPOSED END)
15A	END CAP HEX HD. BOLTS	STAINLESS STEEL T316
15B	END CAP SOCKET HD. BOLTS	STAINLESS STEEL T316
16	HANDWHEEL (OPTIONAL)	STEEL
17	PIN	STAINLESS STEEL T316
18	DOWEL PIN (NOTE 2)	PLATED STEEL ASTM A307
19	INDICATOR (NOTE 2)	CAST IRON ASTM A126, CLASS B
20	TAPERED ROLLER BEARING	HARDENED ALLOY STEEL (SEE NOTE 1)
22	SHAFT BEARING	TEFLON / FIBERGLASS BACKED
30	COVER O-RING	BUNA-N
31	GROMMET	BUNA-N
32	SET SCREW (NOTE 2)	STEEL
33	OPERATING NUT (OPTIONAL FOR ABOVE GROUND SERVICE, STANDARD FOR BURIED SERVICE)	CAST IRON ASTM A126, CLASS B
34	CHAINWHEEL KIT (OPTIONAL)	DUCTILE IRON

## NOTES:

1. FOR SIZES LS-3A & LS-4A, TAPERED ROLLER BEARINGS  
(PART NO. 20) ARE USED ON INBOARD SIDE OF  
EACH STEM COLLAR.

2. NOT FURNISHED FOR BURIED/SUBMERGED SERVICE.

NOTE: ALL SPECIFICATIONS AS  
LAST REVISED.

Revised 7-10-17

## MATERIALS OF CONSTRUCTION

DATE 8/22/08

**VAL-MATIC**<sup>®</sup>

VALVE AND MANUFACTURING CORP.

DRWG. NO.

VM-LS1A-I



July 19, 2022

**USCG Commandant Sector Juneau** (we are working on where to send this letter, so the receiver and salutation will change)

**To Whom it May Concern,**

First, we would like to once again welcome the USCGC Pike to our community. Multiple members of the Borough Assembly and the public were able to take a tour of the new vessel and meet the individuals who now call Petersburg their homeport, and we are grateful to everyone involved for their service to our region.

In our role as the local government body, it is our responsibility to identify needs in the community and look for potential solutions with a broad cross-section of partners. One such issue is the matter of housing, and the lack of units available for individuals as well as families. This issue affects many sectors of our town, notably the Borough's attempt to hire for multiple positions that qualify as first responders. Police officers, dispatchers and the Fire and EMS Director are all positions we are either currently advertising or in the process of hiring for, and the lack of available housing has been a documented deterrent for some applicants.

With the USCGC Pike requiring fewer personnel, we are aware there are unoccupied units located in the Petersburg Borough. This letter is to pursue a formal lease agreement between our two bodies for such units with priority for Borough first responder job positions. We would like to pursue further formal conversations and give authority to the Borough Manager to negotiate on our body's behalf.

We understand if this lease option can only be considered for formal Borough-related positions regarding emergency response. However, we would like to note that the definition of "first responder" includes paramedic and fire response, which is a volunteer-dependent activity here in Petersburg. Those individuals, or their family members, fill many other essential positions in town, such as: hospital employees, teachers and other school staff, independent business owners, utility and administrative Borough staff, grocery store employees, and much more. As the COVID-19 epidemic revealed, it takes everyone to keep a community operating smoothly. Beyond negotiations for a lease agreement to help meet the immediate needs of the Borough's first responder positions, we would like to invite those with decision-making authority to consider listing excess properties for sale so that more Petersburg families can make their dream of owning a home a reality.

Thank you for your consideration of our request. We are actively exploring many avenues for meeting the housing need in our community, and this request is just one.

**Borough Administration**  
PO Box 329, Petersburg, AK 99833 – Phone (907) 772-4425 Fax (907)772-3759  
[www.ci.petersburg.ak.us](http://www.ci.petersburg.ak.us)

Sincerely,

The Petersburg Borough Assembly:

Mark Jensen, Mayor  
Jeigh Stanton Gregor, Vice Mayor  
Thomas Fine-Walsh, Assembly Member  
David Kensinger, Assembly Member  
Bob Lynn, Assembly Member  
Jeff Meucci, Assembly Member  
Chelsea Tremblay, Assembly Member

**From:** Bob Martin <bobwmartin@yahoo.com>  
**Sent:** Friday, July 8, 2022 9:57 PM  
**To:** Assembly <assembly@petersburgak.gov>  
**Subject:** Papkes. Why two ramps?

Dear Mayor and Assembly,

I have always found that the ramp floats at our south harbor boat launch work great for getting down to sea level. That type of ramp alone could provide excellent access to the mooring floats. Please check out the south harbor launch ramp system at any stage of tide and consider how unnecessary a traditional gangway might be at Papkes. A boat launch without a ramp float is uncivilized, but a mooring float accessed by a floating ramp instead of a gangway would be fine. Furthermore, I want to emphasize my opinion that a decent boat launch with abundant parking is key to getting the most support from the community. Relatively few Borough residents on the road system have much use for the dock alone. We don't keep a boat or vehicle there.

Thanks to members Kensinger and Lynn for working on finalizing the plan. Don't let the initial conceptual design box you in though, and don't forget to make it appealing to the broadest number of taxpayers and voters. High usage could be the best way to get voter tax support and user fees that pay the bills.

Speaking of which, have we figured out how to pay for the operating costs? I am absolutely opposed to it being shouldered by downtown harbor moorage ratepayers. My concern remains that the fallback will always be to raise stall fees to cover any budget shortfalls caused by this worthy project. Please keep working on the financial side. It may be the most important piece of the puzzle. Thanks, Bob Martin.

**From:** Marja Smets <marjasmets@gmail.com>  
**Sent:** Sunday, July 10, 2022 11:40 AM  
**To:** Assembly <assembly@petersburgak.gov>  
**Subject:** The Market in Petersburg wins Award

July 10th, 2022

To the members of the Petersburg Borough Council,  
This summer is the 13th season for The Market in Petersburg, a locally organized community market that takes place twice a month from May through September. The Market features vendors who sell handmade and homegrown goods including fresh vegetables, baked goods and artisan jewelry. It is a celebration of the creativity and talent found in our small island community.

This year The Market in Petersburg was awarded a grant from the Alaska Farmers Market Association (AFMA)/USDA, administered by Cook Inlet Keeper. This award provides The Market with funds to increase its level of local advertising, including online, in the paper, and over the radio. Through increased advertising we hope to broaden our reach in the community and increase the number of vendors and participants at The Market this summer. The board of directors for The Market in Petersburg would like to invite you to participate in the event sometime this summer. The gathering happens every second and fourth Saturday of the month at Inga's Galley and the next market is scheduled for Saturday July 23rd. Hope to see you there!

Sincerely,  
Marja Smets  
Member of the Board of Directors for The Market in Petersburg