



SWA

Sinclair Water Authority

126 Cay Drive Milledgeville, GA 31061

Andrew Paracca Plant Manager

Phone (706) 485-8993 Fax (706) 485-8994

### **Agenda**

**Monday, May 10, 2021 ♦ 5:00 PM**

*Sinclair Water Plant*

#### **Opening**

1. Call to Order
2. Public Participation

#### **Minutes**

- [3.](#) Approval of Minutes - March 8, 2021 Regular Meeting

#### **Reports I**

- [4.](#) Manager's Report

#### **Old Business**

- [5.](#) Approval to Discard Surplus Inventory
- [6.](#) Discussion and possible action on Sludge Management

#### **New Business**

- [7.](#) Discussion and possible action on Turbidimeters
- [8.](#) Discussion and possible action on Electrical

#### **Reports II**

- [9.](#) Plant Product Reports
- [10.](#) Financial Reports

#### **Closing**

11. Next Meeting - July 12, 2021
12. Adjournment

**File Attachments for Item:**

3. Approval of Minutes - March 8, 2021 Regular Meeting



SWA

Sinclair Water Authority

126 Cay Drive Milledgeville, GA 31061

Andrew Paracca Plant Manager

Phone (706) 485-8993 Fax (706) 485-8994

**Minutes**

**Monday, March 8, 2021 ◊ 5:00 PM**

Sinclair Water Plant

The Sinclair Water Authority met on Monday, March 8, 2021 at approximately 5:00 PM at the Sinclair Water Plant, 126 Cay Drive, Milledgeville, Georgia.

*PRESENT*

- Chairman Robert Brown
- Member Tommy Jefferson
- Member David Waddell
- Member Billy Webster

*ABSENT*

- Member Sammy Hall

*STAFF PRESENT*

- Plant Manager Andrew Paracca
- Clerk Lynn Butterworth

**Opening**

- 1. Call to Order

Chairman Brown called the meeting to order at approximately 5:05 p.m.  
(Copy of agenda made a part of the minutes.)

- 2. Public Participation

None

**Minutes**

- 3. Approval of Minutes - January 11, 2021 Regular Meeting

**Motion to approve the January 11, 2021 Regular Meeting minutes.**

**Motion made by Member Jefferson, Seconded by Member Webster.**

**Voting Yea: Chairman Brown, Member Jefferson, Member Waddell, Member Webster**

Draft Minutes	Page 1 of 3	
March 8, 2021		

**Reports I**

4. Manager's Report

Plant Manager Paracca reported the following:

- Update of Sanitary Survey scheduled for March 17, 2021
- Update on Membrane performance
- Update on Cyber Security
- Clarification on Calibrating Choby's Meter
- Update on Piedmont and Putnam County meeting
- Update on CLO2 storage
- Update on Turbidimeter
- Update on NPDES Permit and testing procedures

(Copy of report made a part of the minutes.)

5. Discussion and possible action on Inventory Disposal

**Motion to develop a procedure for surplus disposal.**

**Motion made by Member Jefferson, Seconded by Member Webster.**

**Voting Yea: Chairman Brown, Member Jefferson, Member Waddell, Member Webster**

**Motion to approve disposal of listed items with Chairman Brown and Member Webster approving of final disposition.**

**Motion made by Member Waddell, Seconded by Member Jefferson.**

**Voting Yea: Chairman Brown, Member Jefferson, Member Waddell, Member Webster**

6. Discussion and possible action on Discontinuing Use of TOC Analyzer

**Motion to discontinue the use of the TOC analyzer and properly shutdown/store TOC analyzer at end of year, providing no need for use and discontinue SUEZ contract until further use is made for analyzer.**

**Motion made by Member Webster, Seconded by Member Jefferson.**

**Voting Yea: Chairman Brown, Member Jefferson, Member Waddell, Member Webster**

7. Discussion and possible action on Palintest Upgrade Testing Equipment

**Motion to replace one Palin test with a Kemio Chlorite kit at the cost of \$2800 and stock up on Palin tests at the end of the year.**

**Motion made by Member Jefferson, Seconded by Member Waddell.**

**Voting Yea: Chairman Brown, Member Jefferson, Member Waddell, Member Webster**

**New Business**

None

**Old Business**

8. Discussion and possible action on Alum Sludge Management Plan

Member Waddell would like to get pricing on clearing the land to the left of the ponds. Plant Manager Paracca will contact lot clearing companies for estimates.

It was also recommended to contact ESG for ideas concerning the alum sludge management.

**Reports II**

9. Plant Production Reports

Plant Production reports are in the meeting package to review. No action was taken.

Draft Minutes	Page 2 of 3	
March 8, 2021		

10. Financial Reports

Financial reports are in the meeting package to review. No action was taken.

**Closing**

11. Next Meeting - May 10, 2021

The next meeting is scheduled for May 10, 2021 at 5:00 p.m.

12. Adjournment

**Motion to adjourn the meeting.**

**Motion made by Member Jefferson, Seconded by Member Webster.**

**Voting Yea: Chairman Brown, Member Jefferson, Member Waddell, Member Webster**

Meeting adjourned at approximately 6:02 p.m.

ATTEST:

Lynn Butterworth  
Clerk

Robert Brown  
Chairman

Draft Minutes	Page 3 of 3	
March 8, 2021		

**File Attachments for Item:**

4. Manager's Report

## Manager's Report

- Update on Government Accounting
  - Christina has completed first course of three of Government Accounting
  - CFO Training and Support
- Update on Cyber Security
  - ACCG does not offer any additional coverage
  - ACCG will possibly be adding additional coverage in the future
- Update on Membrane performance
  - Membrane performance remains steady
  - Pressure decay rates being successfully maintained through fiber repairs
- Update on Repairs
  - Repairs being made to broken asphalt and chemical containment line for lime and carbon behind Clean in Place chemical room
  - Leak by driveway drainage ditch has been sealed
    - Leaking from sed basin #2 drainpipe (1 of 4) prior to valve
    - Fixed with sealed plug
  - Dealt with another CLO2 water feed to intake leak
    - SWA repaired
    - Also used down opportunity for SWA to repair leaking supply valve
  - Baldwin air relief valve rebuilt by CCNA
  - Muratic acid is being set up for outside installation
  - Old MIT airline taken out of service to be used as new clean in place pneumatic chemical pump air supply
    - using stainless in blower room and running plastic hose in corrosive chemical room
    - Eliminates corroded metal and electronics from corrosive environment
  - Setting up with GA power to start applying SCI-62 Algacide to intake cove
- Update on compressors
  - To our knowledge, compressors have not been professionally inspected in at least 7 years (if not longer), and we have been experiencing issues
  - Quincy Compressor sent a tech on 5/4/2021 for inspection (see attached report); quote for maintaining/restoring full capacity has not been received as of yet
- Update on Sanitary Survey from March 17<sup>th</sup>, 2021
  - Still awaiting full report
- Chlorine solution leak report number 96036
  - Drain valve failed to close during a chlorine solution filter clean
  - Chlorine solution made its way to lagoons and out to lake
  - State was notified and proper actions were taken
  - No violation will incur

- Update for Palin test kits discontinuation (for chlorine dioxide and chlorite readings)
  - New kit has been ordered
  - Old kit has been sent back
  
- Update on NPDES Permit and testing procedures
  - Total Chlorine 0.011 ppm test limit (only reporting for 1-year, effective limit by January 2022)
  - Total Chlorine elimination system needed





# Visit Report

date:2021/05/04 09:57

**SINCLAIR WATER AUTHORITY**  
126 CAY DR  
31061, MILLEDGEVILLE  
Contact:ANDREW 706-485-8993

### Work Comments

5-4-21 RM Customer requested tech to inspect unit and make recommendations on serviceing unit. This is a duplex unit Recommend the customer do full service with belts and replace valves. This will include oil and filter changes and valve plate replacement on both pumps. Pull and wash coolers. Will get customer quote sent over from CTS Sales.

### Time Confirmation

Date	Service Engineer	Hour/km
2021-05-04	- Robert Moody	100 ML
2021-05-04	- Robert Moody	4 HR

### Equipment

<b>Equipment:</b>	INTERNAL SVC LABOR	<b>Visit date:</b>	20210504
<b>Serial Number:</b>	LABOR	<b>Order Number:</b>	124375
<b>Running Hours:</b>	20214 hours	<b>PO number:</b>	CC SEE NOTES
		<b>Contract Number:</b>	

### Next Visit

Next recommended service is a "" estimated due date

### Recommended Repair

Following work is recommended, our service sales will contact you Estimated work hour:

### Work Done

Operations	Comments
✓ Check and clean cooler fins	-
✓ Check electrical components	-
✓ Check regulating valve	-
✓ Clean air filter and filter housing	-
✓ Check safeties	-
✓ Drain air receiver	-
✓ Inspect belt(s)	-

### Measurement Points

Counter	Reading after service	Before service	From last visit on //
Actual running hours (Total)	20214 OPH		20213.0 OPH

### AUTHORIZATION TO CARRY OUT WORK WITH/WITHOUT AN ORDER NO.

**Notes** Customer will agree to supply Quincy with a valid order number or payment for non-account holders for actual time spend, travelling and parts used during the breakdown intervention by next working day.

#### Customer Confirmation

Signature of Andrew Pascoe

Signed by ANDREW 706-485-8993 5/4/2021, 9:57:53 AM  
(Being duty authorize to sign on behalf of the customer)

#### Service Engineer Confirmation

Signature of Robert Moody

Signed by Robert Moody at 5/4/2021, 9:57:21 AM

### Quincy Compressor

Quincy Compressor  
701 North Dobson Avenue  
Bay Minette, AL 36507

Visitors' address:

Tel: 251.937.5900  
Fax:  
www.quincycompressor.com

**File Attachments for Item:**

5. Approval to Discard Surplus Inventory

## Old Business #1

- **Motion** on disposal of inventoried items (List Form attached)
  - Lodestar Hoist
  - 3 x air dryers
  - Old membrane racks
    - Suez has agreed to come pick up and supply shipping truck/pallets
    - We can request a dollar amount to how much resources it would take for us to put into moving these racks to be possibly taken off membrane contract
    - Suez not interested in selling
  - Work platform
    - Suez has deemed unusable considering it is designed for site specific applications
    - No use to SWA staff

# Surplus Inventory Items

## Liquidate/Discard List

Item Name	Description	Comments	Liquidate/Discard	Approved
Lodestar Hoist	Original filter crane for removing filter cassettes	Looking to resale to original crane company	Liquidate	
3 x Air Dryers	Air dryers for process air lines to dry compressed air	Repair costs exceeded replacement costs	Discard	
Membrane shipping racks	Racks used to ship new filter modules	Working with Suez for returning	Liquidate	
Suez work platform	Platform used to access filter cassettes	Working with Suez for returning. Other methods of accessing filters preferable	Liquidate	
Miox System	System used to generate mixed oxidants for disinfection	Looking into re-selling back to original provider. Too expensive to maintain compared to purchasing liquid bleach.	Liquidate	
Truck Bed Cover	Bed cover originally provided with work truck	Auctioning on Govdeals.com	Liquidate	
Electric Pallet Jack	Broken unusable electric pallet jack	Looking to dispose unusable/unrepairable	Discard	
Barrel Lifter	Potassium permanganate barrel lifter	We no longer use 55-gallon drums of potassium permanganate that required this device to use. No plans on returning to using. Auction on Govdeals.com	Liquidate	

**File Attachments for Item:**

6. Discussion and possible action on Sludge Management

## Old Business #2

- **Update and possible Motion on Sludge Management (Quote attached)**
  - Starting lagoon excavation on 5/10/2021
  - Possibly still need an engineer to help design overall process changes needed for sludge management improvements
  - Size of field – 5 acres
  - Eubanks Landco/Roberts Land Management are working on an estimate for clearing
    - Recommended getting Putnam county permits to clear
    - Will not be able to burn until October 1<sup>st</sup>
    - Also interested in assisting with removing sludge from lagoons at a cheaper price than renting equipment
    - \$21,800.00 for clearing only (see attached quote)
  - Reached out to Dan Domanski, provided by Tommy Jefferson, who is sending a list of consultants for forestry specific issues
    - Three recommended consultants, none in our district. Still plan to reach out for possible consulting on work
  - Will need to plan on having pipe work from Sedimentation Basins rerouted to new drying field upon completion

Roberts Land Management  
341A Lair Road  
Milledgeville, GA 31061  
(478) 457-5319  
robertslandmanagement@gmail.com

# Estimate

**ADDRESS**

Andrew Paracca  
Sinclair Water Authority  
126 Cay Drive  
Milledgeville, GA 31061

**ESTIMATE # 1153**  
**DATE 04/19/2021**

---

**ACTIVITY**

**AMOUNT**

**Services**

21,800.00

Clear, burn, sweep clean with dozier  
Install silt fence @ \$5.85 per ft - not included in cost above

---

**TOTAL**

**\$21,800.00**

Accepted By

Accepted Date

**File Attachments for Item:**

7. Discussion and possible action on Turbidimeters



## **New Business #1**

- **Discussion and possible Motion** on Turbidimeters (Hydrocal  
Quote attached)
  - No backups in storage usable
  - Need replacement for combined filter turbidimeter (Swan  
\$4,450.00 with 4-year warranty)
  - Consider additional Turbidimeter to have as back up



**HYDROCAL**

**QUOT** 18

# QOT-671

02/02/20

**Expires on 03/04/20**  
**At 30 days**

## Hydrocal LLC

5885 Cumming Hwy Ste. 108 - 221

Sugar Hill GA 30518

Email : alonzo@hydrocal.us

Phone : 678-595-9516

Website : www.hydrocal.us

### Billing address

Andrew Paracca

**Sinclair Water Authority**

126 Cay Drive

Milledgeville GA 31061

### Shipping address

**Sinclair Water Authority**

126 Cay Drive

Milledgeville GA 31061

Item name & description	Qty.	Unit price	Amount
<b>A-25.411.700.1 SWAN Turbidity Meter</b> Monitor AMI Turbiwell W/LED Analyzer for the measurement of turbidity. Complete on mounting panel. Power supply: 100-240 VAC,50/60 Hz or 24 VDC Chamber drain: manual 4 YEAR WARRANTY	1	\$4,350.00 /piece	\$4,350.00
<b>PS-006 Shipping</b> Shipping	1	\$100.00 /piece	\$100.00
<b>Subtotal</b>			<b>\$4,450.00</b>
<b>Total</b>			<b>\$4,450.00</b>

Payment Information

**File Attachments for Item:**

8. Discussion and possible action on Electrical

## New Business

### #2

- **Discussion and possible Motion** to have power ran from internal breakers to tractor shed and storage building (Quotes attached: Crawford Electric Inc., Baxley Electric Co., Ace Electric, Inc.)
  - Need to have climate control storage for various high-priced items that are degrading over time in humid uncontrolled environment
  - Crawford electric quoted \$5,170.00 to complete
  - Baxley Electric quoted \$6,820.00 to complete
  - Ace Electric quoted \$10,182.00 to complete

Crawford Electric Inc.

**Proposal**

P.O. Box 1788  
 Milledgeville, GA 31059-1788  
 PH. 478-452-8661  
 FAX 478-454-3275

Date	Estimate #
3/15/2021	1299

<b>Name / Address</b>
Sinclair Water Authority 126 Cay Drive Milledgeville, GA 31061 ATTN. Andrew

Terms	Project
Bid	

Description	Qty	Total
Quote to install 100 amp panel in outside building. This price will include a 100 amp panel fed from 120/208 panel inside plant, 1 inch EMT conduit ran to outside and converted to PVC ran in hand dug trench to building. Electrical Bid		5,170.00

THIS PROPOSAL MAY BE WITHDRAWN IF NOT ACCEPTED WITHIN 30-DAYS.	<b>Subtotal</b>	\$5,170.00
<b>Crawford Electric Inc. Is a Veteran owned small business.</b>	<b>Sales Tax (7.0%)</b>	\$0.00
	<b>Total</b>	\$5,170.00

Signature \_\_\_\_\_

# Baxley Electric Co. Inc.

285 West Lakeview Dr  
Milledgeville, GA 31061  
(478)932-5225

## Estimate

Date	Estimate #
3/16/2021	1420

Name / Address
Sinclair Water Authority 126 Cay Dr. Milledgeville GA 31061

P.O. No.

Item	Description	Total
Service	Install 100 amp electrical feed from existing electrical panel in building to new electrical panel in shed Install new 100 amp electrical panel in shed Install welder outlet and 4 - 120 volt electrical outlets trench feed from building to shop trench feed from shop to storage building Install electrical feed to window a/c and electrical feed to existing outlets in storage building	6,820.00

We look forward to doing business with you	<b>Total</b>	\$6,820.00
--	--------------	------------



VALDOSTA, GA • MACON, GA • ATLANTA, GA • STATESBORO, GA • JACKSON, TN • SILER CITY, NC

**Sinclair Water Authority**  
**126 Clay Drive**  
**Milledgeville, Ga. 31061**  
 sinclairewaterauthority@gmail.com  
 (706) 485-8993

3/22/21

Thank you for allowing Ace Electric the oppertunity to provide you with a quote for the following scope of work.

Install conduit and wiring from panel HA to a 40KVA 3 phase transformer that will be installed in the large out building that will provide 120/208V power for a 100A load center and from that load center a singe 20 amp cicuit will be ran to the smaller out building to provide power for the light and receptacles in that building. Trenching between buildings will be provided by Sinclair Water Authority personel.

Prices for conduit and copper are changing by the day. My vendor can only honor pricing for 24 hours.

Materials	\$5,282.00
Labor	\$4,600.00
Misc.	\$300.00
<b>Total</b>	<b>\$10,182.00</b>

Dave Williams     dave.williams@aceelectric.net  
 Office: 478-471-5100 / Cell: 478-256-0193

**File Attachments for Item:**

9. Plant Product Reports



# Flows Monthly Report

Date	Time	Raw	Permeate	Lagoon	Putnam	Baldwin	Choby's	Total Dis
2021-04-01	23:59:59	4,031,533	3,432,094	440,808	1,039,300	2,120,398		3,159,698
2021-04-02	23:59:59	4,092,349	3,452,212	478,961	959,435	2,324,062		3,283,497
2021-04-03	23:59:59	4,039,204	3,405,532	476,429	943,441	2,332,875		3,276,316
2021-04-04	23:59:59	4,137,531	3,510,509	454,734	1,176,527	2,323,330		3,499,857
2021-04-05	23:59:59	3,783,339	3,033,396	754,573	981,923	2,344,572		3,326,495
2021-04-06	23:59:59	4,293,766	3,419,485	799,674	996,184	2,108,630		3,104,814
2021-04-07	23:59:59	3,905,184	2,880,009	633,811	994,542	1,996,420		2,990,962
2021-04-08	23:59:59	3,940,618	3,418,130	382,547	1,150,799	2,303,209		3,454,008
2021-04-09	23:59:59	3,969,523	3,445,689	386,933	952,407	1,920,994		2,873,401
2021-04-10	23:59:59	3,377,332	2,915,423	373,956	956,077	1,914,255		2,870,332
2021-04-11	23:59:59	3,316,608	2,865,701	334,818	1,021,905	1,777,046		2,798,951
2021-04-12	23:59:59	3,416,062	2,969,366	318,997	1,202,568	1,940,672		3,143,240
2021-04-13	23:59:59	3,609,139	3,117,512	355,681	1,002,335	2,029,527		3,031,862
2021-04-14	23:59:59	3,756,399	3,257,947	352,837	1,160,363	2,014,916		3,175,279
2021-04-15	23:59:59	3,921,576	3,407,622	371,459	1,076,987	2,164,464		3,241,451
2021-04-16	23:59:59	3,668,893	3,176,520	364,270	998,366	1,883,885		2,882,251
2021-04-17	23:59:59	3,626,489	3,132,664	379,005	1,075,976	2,024,664		3,100,640
2021-04-18	23:59:59	3,889,697	3,364,180	388,077	1,191,254	2,357,965		3,549,219
2021-04-19	23:59:59	3,711,729	3,145,805	403,688	942,841	2,133,595		3,076,436
2021-04-20	23:59:59	3,680,484	3,172,175	394,078	1,091,609	2,126,809		3,218,418
2021-04-21	23:59:59	3,785,506	3,290,346	347,994	1,067,394	1,878,109		2,945,503
2021-04-22	23:59:59	3,555,351	3,052,050	370,351	1,037,297	2,085,424		3,122,721
2021-04-23	23:59:59	3,640,533	3,142,259	363,695	1,142,762	1,896,597		3,039,359
2021-04-24	23:59:59	3,360,785	2,910,003	393,748	935,091	1,880,536		2,815,627
2021-04-25	23:59:59	3,464,419	2,975,811	356,487	953,394	2,004,673		2,958,067
2021-04-26	23:59:59	3,667,504	3,200,496	342,750	1,210,698	1,819,853		3,030,551
2021-04-27	23:59:59	3,613,414	3,124,145	364,415	1,034,797	2,140,979		3,175,776
2021-04-28	23:59:59	3,821,670	3,311,864	359,880	1,176,821	2,266,347		3,443,168
2021-04-29	23:59:59	3,860,412	3,340,664	397,231	982,231	2,008,830		2,991,061
2021-04-30	23:59:59	3,679,321	3,182,955	370,331	1,240,498	2,050,214		3,290,712
	<b>TOTAL:</b>	<b>112,616,370</b>	<b>96,052,564</b>	<b>12,512,218</b>	<b>31,695,822</b>	<b>62,173,850</b>		<b>93,869,672</b>
	<b>MIN:</b>	<b>3,316,608</b>	<b>2,865,701</b>	<b>318,997</b>	<b>935,091</b>	<b>1,777,046</b>		<b>2,798,951</b>
	<b>MAX:</b>	<b>4,293,766</b>	<b>3,510,509</b>	<b>799,674</b>	<b>1,240,498</b>	<b>2,357,965</b>		<b>3,549,219</b>
	<b>AVG:</b>	<b>3,753,879</b>	<b>3,201,752</b>	<b>417,074</b>	<b>1,056,527</b>	<b>2,072,462</b>		<b>3,128,989</b>
	<b>COUNT:</b>	<b>30</b>	<b>30</b>	<b>30</b>	<b>30</b>	<b>30</b>	<b>0</b>	<b>30</b>

## April 2021 Flows

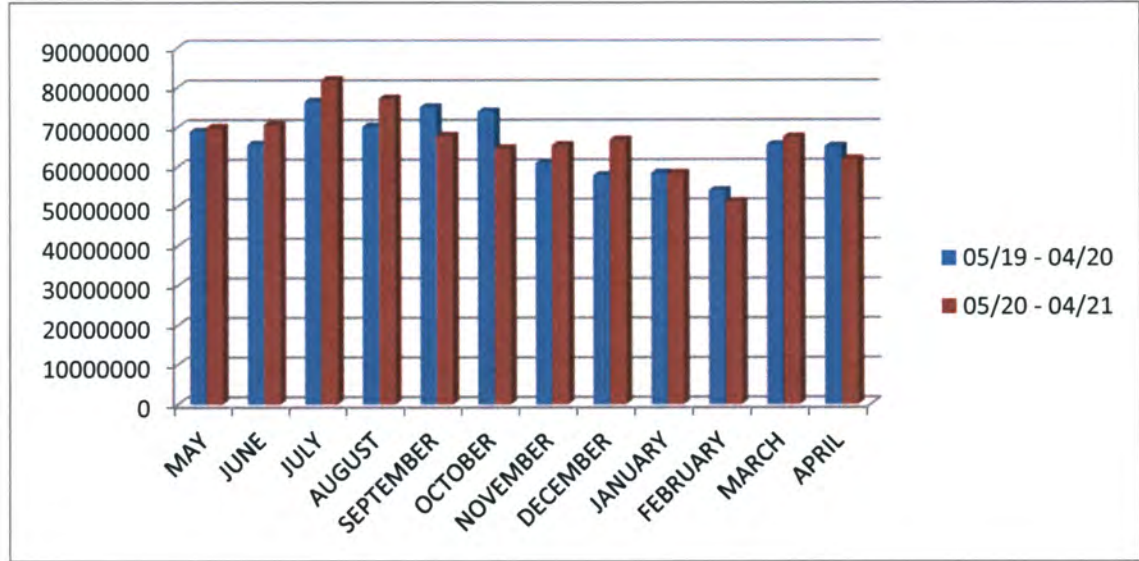
<u>Baldwin Gallons Usage</u>		<u>Baldwin Usage Info</u>	
Baldwin Main Meter	62,173,850	Baldwin Usage	61,804,775
Average of South Putnam Meters	369,075	<b>Baldwin April Projected Usage</b>	<b>66,195,000</b>
		Baldwin Excess Usage %	-7%
		Baldwin % of Total Usage	66%
<b>BALDWIN GALLONS USED</b>	<b>61,804,775</b>	<b>Baldwin May Projected Usage</b>	<b>71,313,000</b>

<u>Putnam Gallons Usage</u>		<u>Putnam Usage Info</u>	
Putnam Main Meter	31,695,822	Putnam Usage	32,064,897
Average of South Putnam Meters	369,075	<b>Putnam April Projected Usage</b>	<b>31,924,000</b>
		Putnam Excess Usage %	0%
		Putnam % of Total Usage	34%
<b>PUTNAM GALLONS USED</b>	<b>32,064,897</b>	<b>Putnam May Projected Usage</b>	<b>35,898,000</b>

Total of Gallons	93,869,672
Baldwin	66%
Putnam	34%
Total of Gallons	100%

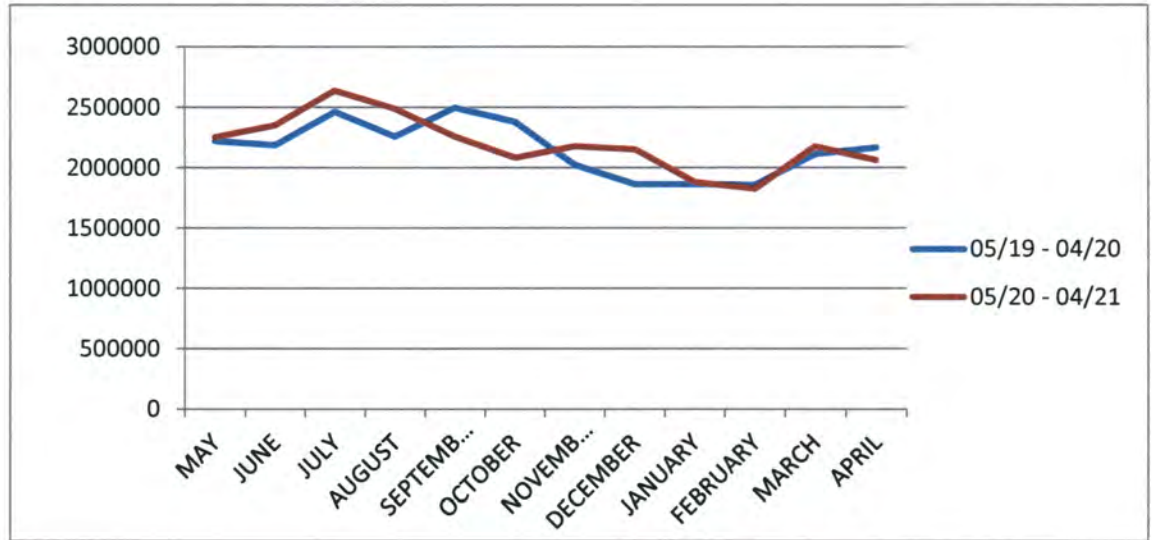
### MONTHLY BILLABLE GALLONS FOR BALDWIN COUNTY May 2019 Thru April 2021

	GALLONS 05/19 - 04/20	GALLONS 05/20 - 04/21
MAY	68890222	69800065
JUNE	65651546	70541369
JULY	76455716	81858675
AUGUST	70112600	77166156
SEPTEMBER	75008158	67710920
OCTOBER	73905735	64551807
NOVEMBER	60834801	65362489
DECEMBER	57773211	66727391
JANUARY	58385430	58303452
FEBRUARY	53967113	51114067
MARCH	65541932	67401652
APRIL	65051465	61804775



## MONTHLY FLOW RATES FOR BALDWIN COUNTY May 2019 Thru April 2021

	FLOWRATES* 05/19 - 04/20	FLOWRATES* 05/20 - 04/21
MAY	2222265	2251615
JUNE	2188384	2351378
JULY	2466313	2640602
AUGUST	2261696	2489230
SEPTEMBER	2500271	2257030
OCTOBER	2384055	2082316
NOVEMBER	2027826	2178749
DECEMBER	1863651	2152496
JANUARY	1864968	1880756
FEBRUARY	1860934	1825502
MARCH	2114255	2174246
APRIL	2168382	2060159

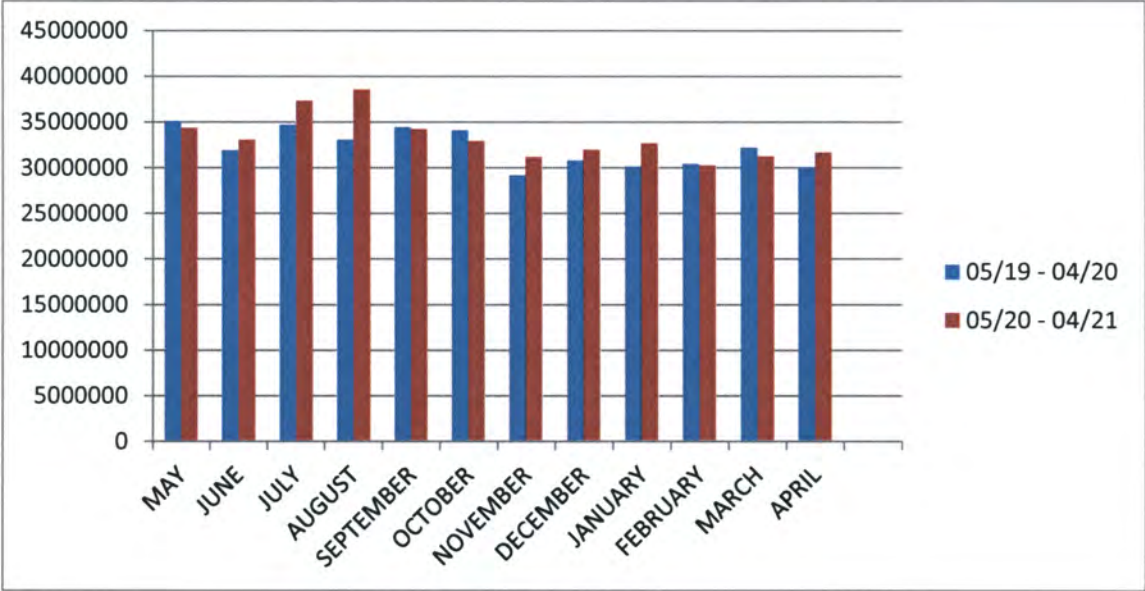


\*These figures are the average daily flow each month for Baldwin County  
These figures are based on the billable gallons for each month

# MONTHLY BILLABLE GALLONS FOR PUTNAM COUNTY

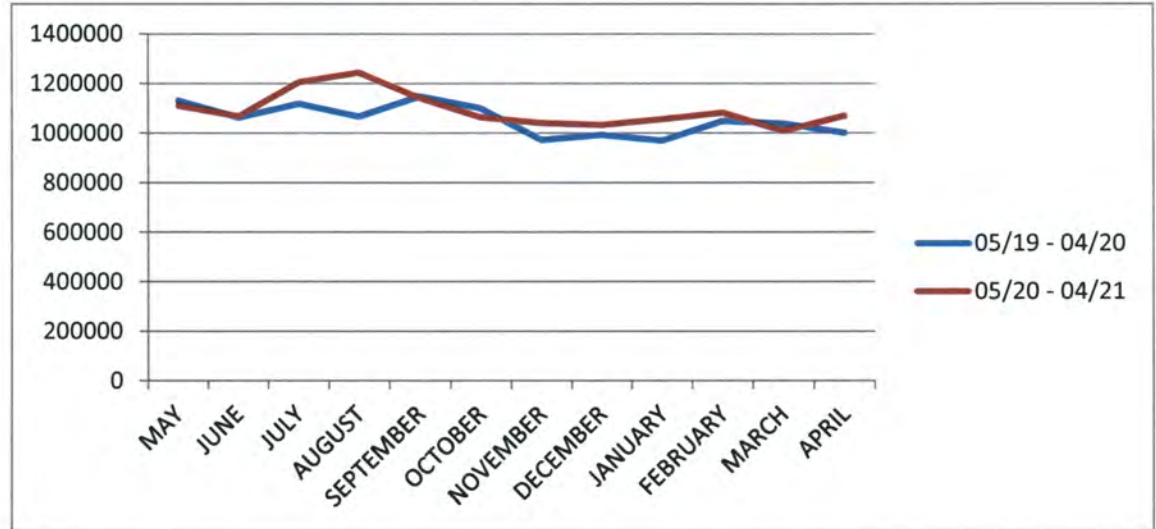
May 2019 Thru April 2021

	GALLONS 05/19 - 04/20	GALLONS 05/20 - 04/21
MAY	35124586	34404415
JUNE	31923228	33107645
JULY	34706334	37362638
AUGUST	33107378	38585492
SEPTEMBER	34482094	34265077
OCTOBER	34127326	32970729
NOVEMBER	29207270	31208446
DECEMBER	30826625	32012246
JANUARY	30123750	32716898
FEBRUARY	30434759	30282459
MARCH	32214416	31263234
APRIL	30061246	31695822



## MONTHLY FLOW RATES FOR PUTNAM COUNTY May 2019 Thru April 2021

	<b>FLOWRATES*</b> <b>05/19 - 04/20</b>	<b>FLOWRATES*</b> <b>05/20 - 04/21</b>
MAY	1133051	1109819
JUNE	1064107	1067988
JULY	1119559	1205246
AUGUST	1067979	1244693
SEPTEMBER	1149403	1142169
OCTOBER	1100881	1063571
NOVEMBER	973575	1040281
DECEMBER	994407	1032653
JANUARY	971733	1055383
FEBRUARY	1049474	1081516
MARCH	1039174	1008491
APRIL	1002041	1068829



\*These figures are the average daily flow each month for Putnam County  
These figures are based on the billable gallons for each month

# Flows Monthly Report

Date	Time	Raw	Permeate	Lagoon	Putnam	Baldwin	Choby's	Total Dist
2021-03-01	23:59:59	3,524,900	2,964,736	402,783	1,027,737	1,608,651		2,636,388
2021-03-02	23:59:59	3,312,589	2,764,541	419,406	989,024	1,704,585		2,693,609
2021-03-03	23:59:59	3,437,789	2,879,537	436,461	1,093,000	1,633,651		2,726,651
2021-03-04	23:59:59	3,474,397	2,905,867	422,261	1,064,331	2,135,370		3,199,701
2021-03-05	23:59:59	4,090,593	3,465,655	461,613	976,258	2,198,422		3,174,680
2021-03-06	23:59:59	4,081,600	3,454,649	472,629	1,052,056	2,286,986		3,339,042
2021-03-07	23:59:59	4,223,244	3,549,589	487,791	1,041,480	2,361,198		3,402,678
2021-03-08	23:59:59	3,841,061	3,275,996	422,665	1,002,636	2,381,196		3,383,832
2021-03-09	23:59:59	4,104,850	3,487,114	447,198	1,108,890	2,248,065		3,356,955
2021-03-10	23:59:59	4,015,405	3,409,444	426,206	1,051,241	2,270,697		3,321,938
2021-03-11	23:59:59	4,039,514	3,442,317	420,679	955,464	2,283,751		3,239,215
2021-03-12	23:59:59	3,975,321	3,358,819	437,575	1,179,029	2,351,660		3,530,689
2021-03-13	23:59:59	4,633,868	3,909,437	537,925	1,053,275	2,450,785		3,504,060
2021-03-14	23:59:59	4,198,378	3,518,998	505,278	1,009,060	2,516,378		3,525,438
2021-03-15	23:59:59	4,240,660	3,581,298	481,862	1,030,141	2,530,730		3,560,871
2021-03-16	23:59:59	3,984,051	3,384,645	310,710	1,050,341	2,167,275		3,217,616
2021-03-17	23:59:59	3,746,214	3,156,992	369,444	910,399	2,245,165		3,155,564
2021-03-18	23:59:59	3,992,592	3,397,450	575,584	963,312	2,295,772		3,259,084
2021-03-19	23:59:59	4,060,792	3,448,172	486,791	1,127,481	2,184,680		3,312,161
2021-03-20	23:59:59	4,193,404	3,532,671	502,364	1,055,110	2,380,422		3,435,532
2021-03-21	23:59:59	3,990,937	3,371,418	452,879	1,028,321	2,404,500		3,432,821
2021-03-22	23:59:59	3,907,580	3,313,303	439,291	987,064	2,249,967		3,237,031
2021-03-23	23:59:59	4,208,051	3,579,809	445,907	934,516	2,281,716		3,216,232
2021-03-24	23:59:59	3,971,928	3,368,772	446,481	1,189,103	2,288,462		3,477,565
2021-03-25	23:59:59	4,006,402	3,414,756	427,853	1,019,381	2,257,263		3,276,644
2021-03-26	23:59:59	3,918,591	3,338,016	474,722	909,172	2,515,200		3,424,372
2021-03-27	23:59:59	4,421,996	3,777,017	478,338	1,018,903	2,507,677		3,526,580
2021-03-28	23:59:59	4,057,508	3,455,587	458,161	1,151,167	2,472,721		3,623,888
2021-03-29	23:59:59	4,250,981	3,643,164	435,037	967,716	2,376,074		3,343,790
2021-03-30	23:59:59	3,827,943	3,232,841	437,730	948,551	2,181,708		3,130,259
2021-03-31	23:59:59	3,925,784	3,340,194	442,083	1,093,255	2,320,280		3,413,535
<b>TOTAL:</b>		<b>123,658,923</b>	<b>104,722,804</b>	<b>13,965,707</b>	<b>31,987,414</b>	<b>70,091,007</b>		<b>102,078,421</b>
<b>MIN:</b>		<b>3,312,589</b>	<b>2,764,541</b>	<b>310,710</b>	<b>909,172</b>	<b>1,608,651</b>		<b>2,636,388</b>
<b>MAX:</b>		<b>4,633,868</b>	<b>3,909,437</b>	<b>575,584</b>	<b>1,189,103</b>	<b>2,530,730</b>		<b>3,623,888</b>
<b>AVG:</b>		<b>3,988,998</b>	<b>3,378,155</b>	<b>450,507</b>	<b>1,031,852</b>	<b>2,261,000</b>		<b>3,292,852</b>
<b>COUNT:</b>		<b>31</b>	<b>31</b>	<b>31</b>	<b>31</b>	<b>31</b>	<b>0</b>	<b>31</b>

**March 2021 Flows**

<u>Baldwin Gallons Usage</u>		<u>Baldwin Usage Info</u>	
Baldwin Main Meter	70,091,007	Baldwin Usage	69,721,932
Average of South Putnam Meters	369,075	Baldwin <b>March</b> Projected Usage	67,054,000
		Baldwin Excess Usage %	4%
		Baldwin % of Total Usage	68%
<b>BALDWIN GALLONS USED</b>	<b>69,721,932</b>	Baldwin <b>April</b> Projected Usage	66,195,000

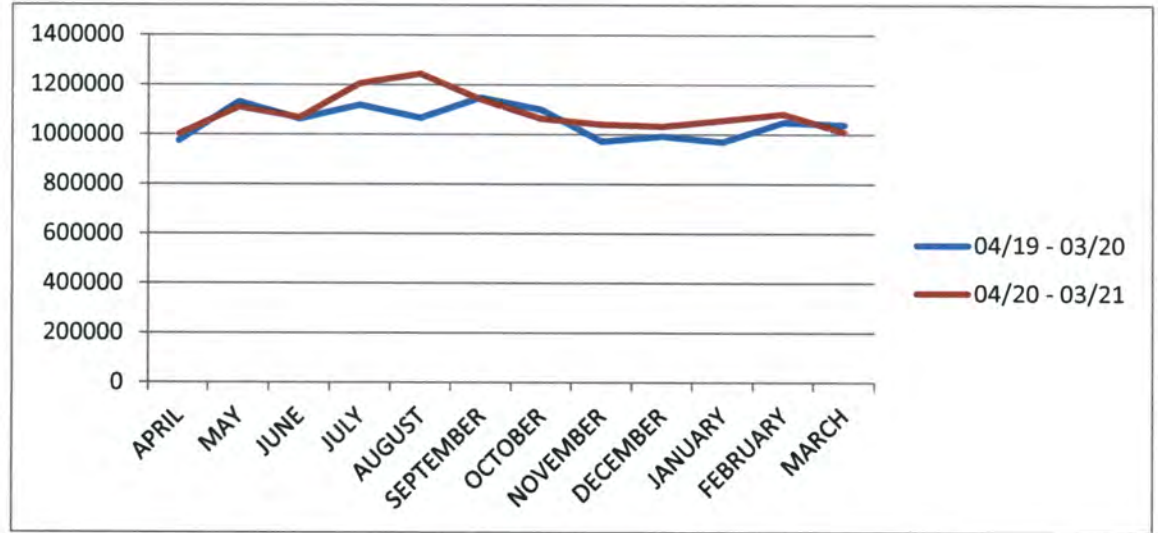
<u>Putnam Gallons Usage</u>		<u>Putnam Usage Info</u>	
Putnam Main Meter	31,987,414	Putnam Usage	32,356,489
Average of South Putnam Meters	369,075	Putnam <b>March</b> Projected Usage	33,708,000
		Putnam Excess Usage %	-4%
		Putnam % of Total Usage	32%
<b>PUTNAM GALLONS USED</b>	<b>32,356,489</b>	Putnam <b>April</b> Projected Usage	31,924,000

Total of Gallons	102,078,421
Baldwin	68%
Putnam	32%
Total of Gallons	100%



### MONTHLY FLOW RATES FOR PUTNAM COUNTY April 2019 Thru March 2021

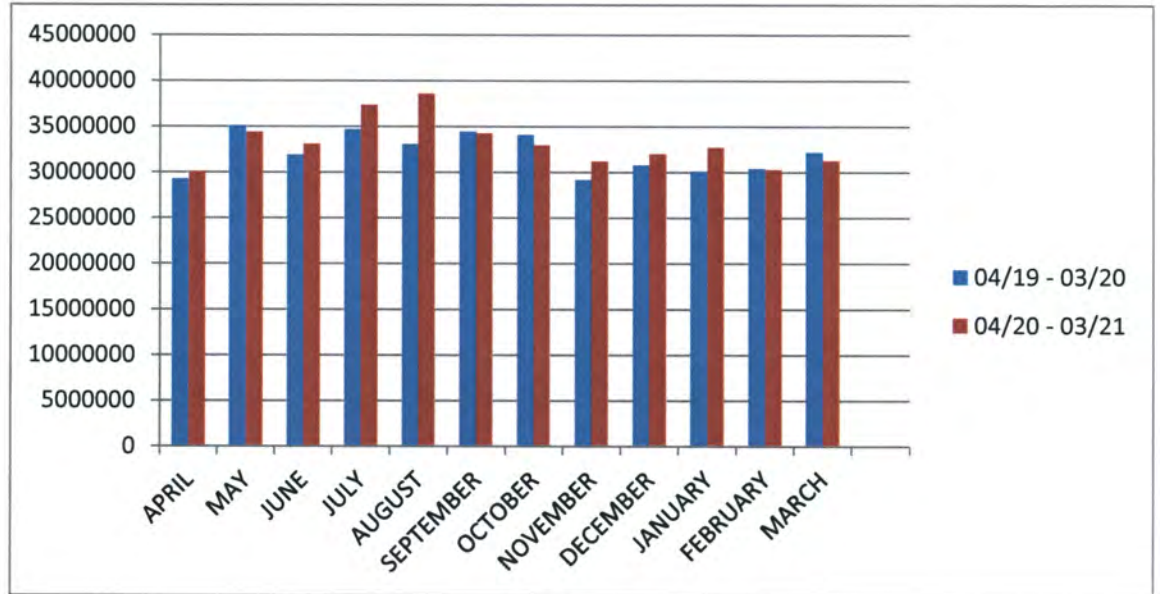
	FLOWRATES* 04/19 - 03/20	FLOWRATES* 04/20 - 03/21
APRIL	976193	1002041
MAY	1133051	1109819
JUNE	1064107	1067988
JULY	1119559	1205246
AUGUST	1067979	1244693
SEPTEMBER	1149403	1142169
OCTOBER	1100881	1063571
NOVEMBER	973575	1040281
DECEMBER	994407	1032653
JANUARY	971733	1055383
FEBRUARY	1049474	1081516
MARCH	1039174	1008491



\*These figures are the average daily flow each month for Putnam County  
These figures are based on the billable gallons for each month

### MONTHLY BILLABLE GALLONS FOR PUTNAM COUNTY April 2019 Thru March 2021

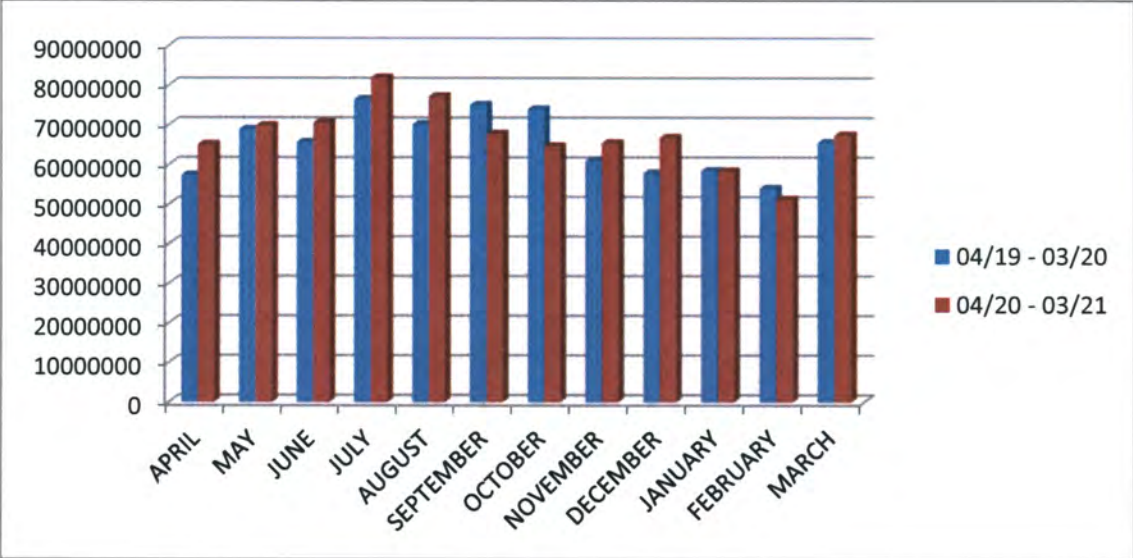
	GALLONS 04/19 - 03/20	GALLONS 04/20 - 03/21
APRIL	29285798	30061246
MAY	35124586	34404415
JUNE	31923228	33107645
JULY	34706334	37362638
AUGUST	33107378	38585492
SEPTEMBER	34482094	34265077
OCTOBER	34127326	32970729
NOVEMBER	29207270	31208446
DECEMBER	30826625	32012246
JANUARY	30123750	32716898
FEBRUARY	30434759	30282459
MARCH	32214416	31263234



# MONTHLY BILLABLE GALLONS FOR BALDWIN COUNTY

April 2019 Thru March 2021

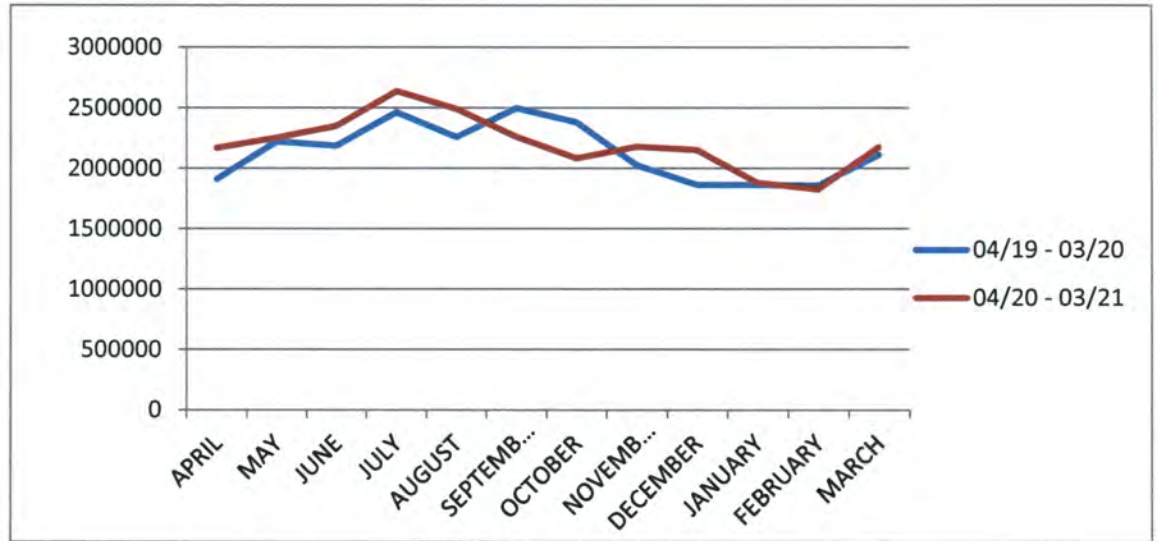
	GALLONS 04/19 - 03/20	GALLONS 04/20 - 03/21
APRIL	57353719	65051465
MAY	68890222	69800065
JUNE	65651546	70541369
JULY	76455716	81858675
AUGUST	70112600	77166156
SEPTEMBER	75008158	67710920
OCTOBER	73905735	64551807
NOVEMBER	60834801	65362489
DECEMBER	57773211	66727391
JANUARY	58385430	58303452
FEBRUARY	53967113	51114067
MARCH	65541932	67401652



## MONTHLY FLOW RATES FOR BALDWIN COUNTY

### April 2019 Thru March 2021

	FLOWRATES*	FLOWRATES*
	04/19 - 03/20	04/20 - 03/21
APRIL	1911790	2168382
MAY	2222265	2251615
JUNE	2188384	2351378
JULY	2466313	2640602
AUGUST	2261696	2489230
SEPTEMBER	2500271	2257030
OCTOBER	2384055	2082316
NOVEMBER	2027826	2178749
DECEMBER	1863651	2152496
JANUARY	1864968	1880756
FEBRUARY	1860934	1825502
MARCH	2114255	2174246



\*These figures are the average daily flow each month for Baldwin County  
 These figures are based on the billable gallons for each month

**File Attachments for Item:**

10. Financial Reports

Sinclair Water Authority

126 Cay Dr.  
Milledgeville, GA 31061

Date	Invoice #
4/30/2021	Baldwin0421

Bill To
Baldwin County Board of Commissioners 1601 North Columbia St Ste. 230 Milledgeville, GA 31061

Description	Qty	Rate	Amount
Baldwin Monthly Water Sales		95,481.41	95,481.41

			<b>Total</b>	\$95,481.41
--	--	--	--------------	-------------

Sinclair Water Authority

126 Cay Dr.  
Milledgeville, GA 31061

**Invoice** 39

Date	Invoice #
4/30/2021	315

Bill To
Putnam Co. Board of Commissioners 117 Putnam Drive Suite A Eatonton, GA 31024

Description	Qty	Rate	Amount
Putnam Billable Gallons		78,121.16	78,121.16

	<b>Total</b>	\$78,121.16
--	--------------	-------------

Sinclair Water Authority

126 Cay Dr.  
Milledgeville, GA 31061

Invoice 40

Date	Invoice #
3/31/2021	314

Bill To
Putnam Co. Board of Commissioners 117 Putnam Drive Suite A Eatonton, GA 31024

Description	Qty	Rate	Amount
Putnam Water Sales		78,121.16	78,121.16
SWA Total Distribution -102,078,421			
Putnam Main Meter as of March 31, 2021 - 31,987,414			
South Putnam Meters average = 369,075			
Putnam Gallons Used - 32,356,489			
Putnam March 2021 Projected Usage - 33,708,000			
Putnam Excess Usage - (-4%)			
Putnam % of Total Usage - 32%			
Putnam April 2021 Projections - 31,924,000			

			<b>Total</b>	\$78,121.16
--	--	--	--------------	-------------



Sinclair Water Authority

126 Cay Dr.  
Milledgeville, GA 31061

**Invoice** 41

Date	Invoice #
3/31/2021	313

Bill To
Baldwin County Board of Commissioners 121 N. Wilkinson St. Ate 314 Milledgeville, GA 31061

Description	Qty	Rate	Amount
Baldwin Monthly Water Sales		95,481.41	95,481.41
SWA Total Distribution -102,078,421			
Baldwin Main Meter as of March 31, 2021 -70,091,007			
Average of South Putnam Meters - 369,075			
Baldwin Gallons Used - 69,721,932			
Baldwin March Projected Usage - 67,054,000			
Baldwin Excess Usage 4%			
Baldwin % of Total Usage - 68%			
Baldwin April 2021 Projections - 66,195,000			

	<b>Total</b>	\$95,481.41
--	--------------	-------------

Sinclair Water Authority  
**Profit & Loss Budget Performance 2020**  
 January through April 2021

12:10 PM  
 05/03/2021  
 Accrual Basis

	<u>Jan - Apr 21</u>	<u>Budget</u>	<u>% of Budget</u>	<u>Annual Budget</u>
<b>Ordinary Income/Expense</b>				
<b>Income</b>				
<b>34.4200 · Water sales</b>				
34.4210 · Water sales - Baldwin	381,925.64	381,925.64	100.0%	1,145,777.00
34.4220 · Water sales - Putnam	312,484.64	312,484.64	100.0%	937,454.00
<b>Total 34.4200 · Water sales</b>	<u>694,410.28</u>	<u>694,410.28</u>	<u>100.0%</u>	<u>2,083,231.00</u>
36.1000 · Interest Earned	1,332.92	2,166.68	61.52%	6,500.00
<b>38.9000 · Other Income</b>				
38.9100 · Operating Reserve Income	0.00	0.00	0.0%	0.00
<b>Total 38.9000 · Other Income</b>	<u>0.00</u>	<u>0.00</u>	<u>0.0%</u>	<u>0.00</u>
<b>Total Income</b>	<u>695,743.20</u>	<u>696,576.96</u>	<u>99.88%</u>	<u>2,089,731.00</u>
<b>Gross Profit</b>	695,743.20	696,576.96	99.88%	2,089,731.00
<b>Expense</b>				
<b>51 · Pers Serv &amp; Benefits</b>				
<b>51.1000 · Salaries and wages</b>				
51.1100 · Salaries & Wages-Regular	116,217.94	119,103.36	97.58%	357,310.00
51.1400 · Salaries & Wages - Other	5,678.57	5,251.68	108.13%	15,755.00
<b>Total 51.1000 · Salaries and wages</b>	<u>121,896.51</u>	<u>124,355.04</u>	<u>98.02%</u>	<u>373,065.00</u>
<b>51.2000 · Employee Benefits</b>				
51.2100 · Group Health Insurance	20,105.40	18,211.68	110.4%	54,635.00
51.2120 · BCBS-Dental	1,125.55	1,003.36	112.18%	3,010.00
51.2130 · BCBS-Vision	200.35	139.36	143.76%	418.00
51.2200 · Social Security (FICA)	7,100.44	7,486.36	94.85%	22,459.00
51.2300 · Medicare	1,663.86	1,803.36	92.26%	5,410.00
51.2400 · Retirement Plan Base Contr	2,290.73	2,487.00	92.11%	7,461.00
51.2450 · Retirement Plan Match	3,391.63	3,730.68	90.91%	11,192.00
51.2460 · Pension Plan	0.00	2,243.36	0.0%	6,730.00
51.2700 · Workers' Compensation	-1,776.00	6,666.68	-26.64%	20,000.00
51.2900 · Group Life Insurance	419.86	486.00	86.39%	1,458.00
<b>Total 51.2000 · Employee Benefits</b>	<u>34,521.82</u>	<u>44,257.84</u>	<u>78.0%</u>	<u>132,773.00</u>
<b>Total 51 · Pers Serv &amp; Benefits</b>	<u>156,418.33</u>	<u>168,612.88</u>	<u>92.77%</u>	<u>505,838.00</u>
<b>52 · Services</b>				
<b>52.1000 · Professional &amp; technical</b>				
52.1200 · Professional services				
52.1210 · Legal Fees	313.50	366.68	85.5%	1,100.00
52.1220 · Accounting Services	2,000.01	8,533.36	23.44%	25,600.00
<b>Total 52.1200 · Professional services</b>	<u>2,313.51</u>	<u>8,900.04</u>	<u>25.99%</u>	<u>26,700.00</u>

	<u>Jan - Apr 21</u>	<u>Budget</u>	<u>% of Budget</u>	<u>Annual Budget</u>
<b>52.1300 · Technical services</b>				
52.1310 · Engineering	2,922.50	2,500.00	116.9%	7,500.00
52.1320 · Computer Services	156.83	366.68	42.77%	1,100.00
52.1330 · Laboratory Testing	4,262.65	8,833.36	48.26%	26,500.00
52.1340 · Payroll Processing	925.02	866.68	106.73%	2,600.00
<b>Total 52.1300 · Technical services</b>	<b>8,267.00</b>	<b>12,566.72</b>	<b>65.79%</b>	<b>37,700.00</b>
<b>Total 52.1000 · Professional &amp; technical</b>	<b>10,580.51</b>	<b>21,466.76</b>	<b>49.29%</b>	<b>64,400.00</b>
<b>52.2000 · Property services</b>				
52.2150 · Alum Sludge Disposal	3,976.75	15,000.00	26.51%	45,000.00
52.2210 · Building Maintenance	8,142.87	6,333.36	128.57%	19,000.00
52.2220 · Equipment Maintenance	13,979.26	17,333.36	80.65%	52,000.00
52.2230 · Automobile Expense	549.09	333.36	164.71%	1,000.00
52.2700 · Membrane Maintenance Services	0.00	6,426.00	0.0%	19,278.00
<b>Total 52.2000 · Property services</b>	<b>26,647.97</b>	<b>45,426.08</b>	<b>58.66%</b>	<b>136,278.00</b>
<b>52.3000 · Other services</b>				
52.3100 · Insurance Expense	0.00	9,166.68	0.0%	27,500.00
52.3200 · Telephone (communications)	1,351.22	1,333.36	101.34%	4,000.00
52.3300 · Advertising	0.00	250.00	0.0%	750.00
52.3500 · Travel Expense	130.53	1,333.36	9.79%	4,000.00
52.3600 · Dues and fees	119.00	333.36	35.7%	1,000.00
52.3700 · Education Training	1,039.00	1,300.00	79.92%	3,900.00
52.3800 · License Renewals	285.00	266.68	106.87%	800.00
52.3850 · Contract Labor	900.00	2,333.36	38.57%	7,000.00
<b>Total 52.3000 · Other services</b>	<b>3,824.75</b>	<b>16,316.80</b>	<b>23.44%</b>	<b>48,950.00</b>
<b>Total 52 · Services</b>	<b>41,053.23</b>	<b>83,209.64</b>	<b>49.34%</b>	<b>249,628.00</b>
<b>53 · Supplies</b>				
53.1100 · Office Supplies	2,795.74	1,666.68	167.74%	5,000.00
53.1130 · Other operating supplies	90.00			
53.1135 · Chemicals	63,789.36	80,400.00	79.34%	241,200.00
53.1140 · Laboratory Supplies	11,458.13	7,000.00	163.69%	21,000.00
53.1150 · Safety Items	397.93	666.68	59.69%	2,000.00
53.1200 · Utilities / Energy	54,645.65	55,000.00	99.36%	165,000.00
53.1220 · Raw Water Withdrawal	0.00	17,666.68	0.0%	53,000.00
53.1270 · Gasoline	392.48	666.68	58.87%	2,000.00
53.1600 · Small equipment & tools	0.00	333.36	0.0%	1,000.00
53.1710 · Uniforms	58.68	408.36	14.37%	1,225.00
<b>Total 53 · Supplies</b>	<b>133,627.97</b>	<b>163,808.44</b>	<b>81.58%</b>	<b>491,425.00</b>
<b>Total Expense</b>	<b>331,099.53</b>	<b>415,630.96</b>	<b>79.66%</b>	<b>1,246,891.00</b>
<b>Net Ordinary Income</b>	<b>364,643.67</b>	<b>280,946.00</b>	<b>129.79%</b>	<b>842,840.00</b>
<b>Other Income/Expense</b>				

	<u>Jan - Apr 21</u>	<u>Budget</u>	<u>% of Budget</u>	<u>Annual Budget</u>
<b>Other Expense</b>				
56 · Depreciation & amortization				
56.1500 · Membrane Replacement Contract	0.00	40,500.00	0.0%	121,500.00
<b>Total 56 · Depreciation &amp; amortization</b>	<u>0.00</u>	<u>40,500.00</u>	<u>0.0%</u>	<u>121,500.00</u>
58 · Debt service				
58.1330 · GEFA Loan #1 Principal	0.00	2,133.36	0.0%	6,400.00
58.1340 · GEFA Loan #2 Principal	0.00	15,100.00	0.0%	45,300.00
58.1350 · Series 2019 Principal	0.00	75,000.00	0.0%	225,000.00
58.2310 · GEFA Loan #1 Interest Expense	688.64	666.68	103.29%	2,000.00
58.2320 · GEFA Loan #2 Interest Expense	6,758.86	6,500.00	103.98%	19,500.00
58.2350 · Series 2019 Interest	113,991.30	154,300.00	73.88%	462,900.00
<b>Total 58 · Debt service</b>	<u>121,438.80</u>	<u>253,700.04</u>	<u>47.87%</u>	<u>761,100.00</u>
<b>Total Other Expense</b>	<u>121,438.80</u>	<u>294,200.04</u>	<u>41.28%</u>	<u>882,600.00</u>
<b>Net Other Income</b>	<u>-121,438.80</u>	<u>-294,200.04</u>	<u>41.28%</u>	<u>-882,600.00</u>
<b>Net Income</b>	<u><u>243,204.87</u></u>	<u><u>-13,254.04</u></u>	<u><u>-1,834.95%</u></u>	<u><u>-39,760.00</u></u>

<b>CAPITAL BUDGET</b>	
<b>Cash Available for Capital Projects:</b>	
Certificate of Deposit	\$ 264,921.91
(Unused reserves after bond refunding)	
Money Market Account	110,078.09
(Unused reserves after bond refunding)	
<b>Capital Project Expenditure Balance</b>	<b>\$ 375,000.00</b>

<b>OPERATING RESERVE</b>	
Unused Operating Reserves	\$ 220,642.49
(Membrane Reserve)	
FY21 Contingency Allocation	28,000.00
<b>Operating Reserve Balance</b>	<b>\$ 248,642.49</b>

## Capital Project Fund Balance

(Formerly USDA Reserve & USDA Reserve CD)

Date	Deposits	W/D Amounts	Memo	Fund Balance (See Balance Sheet)
------	----------	----------------	------	-------------------------------------

**FY2021**

			<b>USDA CD Reserve</b>	<b>\$ 264,921.91</b>
			<b>USDA Reserve</b>	<b>\$ 160,957.50</b>
<b>12/31/2021</b>			<b>Beginning Balance</b>	<b>\$ 425,879.41</b>
12/31/2021	\$ 3,206.98		CD Reserve Interest	\$ 429,086.39
1/31/2021	\$ 172.38		Monthly Interest Reserve	\$ 429,258.77
2/28/2021	\$ 155.87		Monthly Interest Reserve	\$ 429,414.64
3/2/2021		\$ 47,213.00	Transfer to Operating FY21 Budget	\$ 382,201.64
3/31/2021	\$ 122.17		Monthly Interest Reserve	\$ 382,323.81
4/30/2021	\$ 3,236.88		CD Reserve Interest	\$ 385,560.69
4/30/2021	\$ 118.36		Monthly Interest Reserve	<b>\$ 385,679.05</b>
Totals	\$ 7,012.64	\$ 47,213.00		

# Operating Reserve Fund

(Formerly Membrane Reserve)

Date	Deposits	W/D Amounts	Memo	Operating Reserve Fund Balance	Operating Account Balance Sheet	As of Date
------	----------	----------------	------	--------------------------------------	---------------------------------------	------------

**FY2021**

	\$ 220,642.49		Membrane Reserve Fund Closing Balance	\$ 220,642.49		
12/15/2020		\$ 140,747.00	Membrane Contract paid in advance	\$ 79,895.49		
1/1/2021	\$ 28,000.00		Contingency	\$ 107,895.49	\$ 441,526.38	4.30.21

Totals            \$ 248,642.49    \$ 140,747.00

12:23 PM  
05/03/21  
Accrual Basis

Sinclair Water Authority  
Balance Sheet  
As of April 30, 2021

	<u>Apr 30, 21</u>
<b>ASSETS</b>	
<b>Current Assets</b>	
<b>Checking/Savings</b>	
11.1100 · Cash	
11.1111 · Exchange Bank Operating	441,526.38
11.1112 · Exchange - Payroll	5,000.00
11.1120 · Exchange-USDA Reserve	114,194.92
11.1140 · CD - USDA Reserve	<u>264,921.91</u>
<b>Total 11.1100 · Cash</b>	825,643.21
11.1150 · Petty Cash	100.00
11.1200 · Cash With Fiscal Agent	<u>177,672.96</u>
<b>Total Checking/Savings</b>	1,003,416.17
<b>Accounts Receivable</b>	
11.1900 · Accounts Receivable	<u>95,481.41</u>
<b>Total Accounts Receivable</b>	95,481.41
<b>Other Current Assets</b>	
11.3800 · Prepaid Assets	<u>36,603.40</u>
<b>Total Other Current Assets</b>	<u>36,603.40</u>
<b>Total Current Assets</b>	1,135,500.98
<b>Fixed Assets</b>	
11.7100 · Land & Row	76,763.35
11.7400 · Water Treatment Plant	18,828,423.46
11.7410 · Accum Depr-Buildings	-6,862,414.92
11.7500 · Machinery and Equipment	110,702.80
11.7510 · Accum Depr-Machinery & Equip	-77,336.64
11.7620 · CIP - Membrane Replacement	286,571.58
11.7630 · CIP-CL02 Project	<u>46,911.86</u>
<b>Total Fixed Assets</b>	12,409,621.49
<b>Other Assets</b>	
11.9000 · Deferred Outflows of Resources	
11.9300 · Defrred Outflw of Resrc-Pension	<u>6,388.00</u>
<b>Total 11.9000 · Deferred Outflows of Resources</b>	6,388.00
11.9400 · Def Outfl of Res-Unam Bd Iss Cs	<u>4,490.20</u>
<b>Total Other Assets</b>	<u>10,878.20</u>
<b>TOTAL ASSETS</b>	<u><u>13,556,000.67</u></u>
<b>LIABILITIES &amp; EQUITY</b>	
<b>Liabilities</b>	
<b>Current Liabilities</b>	
<b>Accounts Payable</b>	
12.1110 · Accounts Payable	<u>1,168.62</u>
<b>Total Accounts Payable</b>	1,168.62
<b>Credit Cards</b>	
12.1122 · VISA	<u>1,059.59</u>
<b>Total Credit Cards</b>	1,059.59

12:23 PM  
05/03/21  
Accrual Basis

**Sinclair Water Authority**  
**Balance Sheet**  
As of April 30, 2021

	Apr 30, 21
<b>Other Current Liabilities</b>	
12.1300 · Payroll Deductions Payable	
12.1310 · BCBS-Dental	3,687.12
12.1312 · AFLAC	-90.20
12.1315 · BCBS-Vision	312.90
12.1320 · Group Health Insurance	8,206.24
12.1330 · Social Security (FICA)	-0.03
12.1350 · Federal Income Tax	231.37
12.1390 · 457 Plan Deductions	-35.74
12.1395 · Life Insurance - voluntary	-20.38
	12,291.28
<b>Total 12.1300 · Payroll Deductions Payable</b>	<b>12,291.28</b>
12.1400 · Emplr's part of E-ye Benefits	
12.1420 · Group Health Insurance	2,999.11
	2,999.11
<b>Total 12.1400 · Emplr's part of E-ye Benefits</b>	<b>2,999.11</b>
12.1435 · Compensated Absences Payable	5,752.12
12.2400 · Accrued Interest Payable	87,475.10
	93,227.22
<b>Total Other Current Liabilities</b>	<b>108,517.61</b>
<b>Total Current Liabilities</b>	<b>110,745.82</b>
<b>Long Term Liabilities</b>	
12.5265 · Net Pension Liability	-5,670.00
12.5300 · Notes Payable non-current	
12.5320 · GEFA Loan Payable 2013	95,691.85
12.5330 · GEFA Loan Payable 2014	868,508.49
	964,200.34
<b>Total 12.5300 · Notes Payable non-current</b>	<b>964,200.34</b>
12.5660 · Series 2019 Bonds Payable	10,805,000.00
12.9000 · Deferred Inflows of Resources	
12.9300 · Deferd Inflows of Resrs-Pension	8,992.00
	8,992.00
<b>Total 12.9000 · Deferred Inflows of Resources</b>	<b>8,992.00</b>
12.9310 · Def Inflows of Res-Series2019Bn	1,721,178.50
	1,721,178.50
<b>Total Long Term Liabilities</b>	<b>13,493,700.84</b>
<b>Total Liabilities</b>	<b>13,604,446.66</b>
<b>Equity</b>	
13.2400 · Contributed Capital-USDA	1,907,000.00
13.3700 · Retained Earnings	-2,051,633.54
13.3790 · Prior Period Adjustment	13,956.25
	-51,677.29
13.3791 · PPA-Change in Accounting Method	-46,757.57
13.3792 · PPA-Change in Acctg Principle	-114,216.00
Net Income	243,204.87
	-198,769.30
<b>Total Equity</b>	<b>-48,445.99</b>
<b>TOTAL LIABILITIES &amp; EQUITY</b>	<b>13,556,000.67</b>