



SWA

Sinclair Water Authority

126 Cay Drive Milledgeville, GA 31061

Joseph D. Witcher Plant Manager

Phone (706) 485-8993 Fax (706) 485-8994

### **Agenda**

**Monday, January 11, 2021 ◊ 5:00 PM**

*Sinclair Water Plant*

#### **Opening**

1. Call to Order
2. Public Participation

#### **Minutes**

- [3.](#) Approval of Minutes - November 9, 2020 Regular Meeting

#### **Reports I**

- [4.](#) Manager's Update
  - Manager's Report

#### **New Business**

5. Introduction of New Board Members

#### **Old Business**

None

#### **Reports II**

- [6.](#) Plant Production Reports
- [7.](#) Financial Reports

#### **Closing**

8. Next Meeting - March 8, 2021
9. Adjournment

**File Attachments for Item:**

3. Approval of Minutes - November 9, 2020 Regular Meeting



SWA

Sinclair Water Authority

126 Cay Drive Milledgeville, GA 31061

Joseph D. Witcher Plant Manager

Phone (706) 485-8993 Fax (706) 485-8994

### Minutes

**Monday, November 9, 2020 ◊ 5:00 PM**

*Sinclair Water Plant*

The Sinclair Water Authority met on Monday, November 9, 2020 at approximately 5:00 PM at the Sinclair Water Plant, 126 Cay Drive, Milledgeville, Georgia.

#### *PRESENT*

Chairman Robert Brown  
 Member Trevor Addison  
 Member Sammy Hall  
 Member Kelvin Irvin  
 Member David Waddell

#### *STAFF PRESENT*

Plant Manager Andrew Paracca  
 Clerk Lynn Butterworth

#### **Opening**

##### 1. Call to Order

Chairman Brown called the meeting to order at approximately 4:55 p.m.  
 (Copy of agenda made a part of the minutes.)

##### 2. Public Participation

None

#### **Minutes**

##### 3. Approval of Minutes

a. September 14, 2020 Regular Meeting

**Motion to approve the minutes of the September 14, 2020 Regular Meeting.**

**Motion made by Member Addison, Seconded by Member Hall.**

**Voting Yea: Chairman Brown, Member Addison, Member Hall, Member Irvin, Member Waddell**

b. October 19, 2020 Called Meeting

**Motion to approve the minutes of the October 19, 2020 Called Meeting.**

**Motion made by Member Addison, Seconded by Member Hall.**

**Voting Yea: Chairman Brown, Member Addison, Member Hall, Member Irvin, Member Waddell**

### **Reports I**

4. Introduction of Plant Manager Andrew Paracca

Chairman Brown introduced new Plant Manager Andrew Paracca.

5. Manager's Report

Plant Manager Paracca reported the on following:

(Copy of report made a part of the minutes.)

- DBP Improvements
- COVID-19 Update
- Alum Sludge
- Train Overhead Lift
- CIP System Rebuild

### **New Business**

6. Approval of 2021 SWA Meeting Calendar

**Motion to approve the proposed 2021 SWA Meeting Calendar**

**Motion made by Member Addison, Seconded by Member Irvin.**

**Voting Yea: Chairman Brown, Member Addison, Member Hall, Member Irvin, Member Waddell**

(Copy of meeting calendar made a part of the minutes.)

7. Election of Officers

a. Secretary (currently Christina Corn)

**Motion to appoint Christina Corn as SWA Secretary.**

**Motion made by Member Addison, Seconded by Member Irvin.**

**Voting Yea: Chairman Brown, Member Addison, Member Hall, Member Irvin, Member Waddell**

b. Treasurer (currently Linda Zarkowsky)

**Motion to appoint Linda Zarkowsky as SWA Treasurer.**

**Motion made by Member Hall, Seconded by Member Irvin.**

**Voting Yea: Chairman Brown, Member Addison, Member Hall, Member Irvin, Member Waddell**

8. Approval of 2021 Budget

Member Addison reviewed the highlights and increases to the budget. He requested to change line item 53.1200 - Utilities/Energy from \$180,000 to \$165,000 and the line item for Expense Contingency from \$13,000 to \$28,000.

**Motion to approve the 2021 Budget as amended.**

**Motion made by Member Addison, Seconded by Member Waddell.**

**Voting Yea: Chairman Brown, Member Addison, Member Hall, Member Irvin, Member Waddell**

(Copy of budget made a part of the minutes.)

**Old Business**

9. Update on Exchange Bank Accounts of Operating and USDA Reserve Account (TA)

Member Addison requested more time to research interest rates and will report back at the next meeting. No action was taken.

**Reports II**

10. Plant Production Reports

Plant Production reports are in the meeting package to review. No action was taken.

11. Financial Reports

Financial reports are in the meeting package to review. No action was taken.

**Closing**

12. Next Meeting - January 11, 2021

The next meeting is scheduled for January 11, 2021 at 5:00 p.m.

13. Adjournment

**Motion to adjourn the meeting.**

**Motion made by Member Irvin, Seconded by Member Waddell.**

**Voting Yea: Chairman Brown, Member Addison, Member Hall, Member Irvin, Member Waddell**

Meeting adjourned at approximately 5:12 p.m.

ATTEST:

Lynn Butterworth  
Clerk

Robert Brown  
Chairman

**File Attachments for Item:**

4. Manager's Update

a. Manager's Report

## Manager's Report

- New NPDES Permit has been received
  - Has new requirements
    - Phosphorus testing which requires additional lab reagents (\$80 for 50 tests)
    - New lower total chlorine residual of 0.011 mg/, which will require additional lab equipment (~\$800+)
    - E. Coli testing (needs to be sourced out)
    - Flow meter calibration verification every week
  - Sludge management plan will need to be submitted by February 19 each calendar year. This can be completed by plant manager with the assistance of Carter & Sloope engineer Alex Wiseman with hourly charge. (estimated \$350-\$700 if assistance is needed)
  - Request to have conceptual study done to optimize sludge management
    - Continual in-house methods are being investigated
- CLO2 update
  - CLO2 feed line from plant has burst 4 times in the past month
    - One was repaired by SWA staff, one was repaired by EPSWA staff, two were repaired by Baldwin county staff
    - During the CLO2 outage, no adverse effects on water quality were detected due to low temperatures limiting THM and HAAs
  - Due to the continual maintenance and repair of the CLO2 feed line, permanent set up has not been completed
    - Walls and rebar need to be cut and removed
    - Tote containments moved and hard piping glued
- Membrane performance
  - New hoist is operating better than previous hoist
  - Still investigating pressure decay issues on train #2 with Suez
    - Discovered plastic components of each cassette are recommended to be replaced every 10 years
    - This additional work is included in Suez contract and will need to be planned out
- Disposal of inventoried items
  - Electric pallet jack – beyond repair
  - Truck bed cover
  - Miox system, softeners, and chiller
  - Potassium Permanganate barrel lifter
- CIP Room changes
  - Relocating critical CIP pump components into noncorrosive environment
    - Parts for relocation cost ~\$2600
    - M.R. Systems will need to be quoted to run new conduit for electronics
  - Relocating Muriatic Acid outside of CIP room limiting corrosion (also safety issue)
    - Plans to drill access point through exterior wall
    - Concerting over to Muriatic totes and purchasing a covered tote containment for permanent location outdoors (~\$2600)

- SED basins clean out changes
  - Sludge Collector upgrades to get back online unnecessary with current clean out method used
  - Removing sludge collector hardware from bottom of basins to make clean outs more efficient



**File Attachments for Item:**

6. Plant Production Reports

# Flows Monthly Report

Date	Time	Raw	Permeate	Lagoon	Putnam	Baldwin	Choby's	Total Dis
2020-12-01	23:59:59	4,163,479	3,514,998	309,380	1,138,852	2,313,258		3,452,110
2020-12-02	23:59:59	3,948,846	3,341,423	295,103	937,272	2,100,382		3,037,654
2020-12-03	23:59:59	3,882,383	3,278,970	287,908	1,026,996	2,147,968		3,174,964
2020-12-04	23:59:59	3,711,505	3,087,896	311,758	1,081,817	2,257,223		3,339,040
2020-12-05	23:59:59	3,875,091	3,264,524	300,596	1,020,452	2,197,162		3,217,614
2020-12-06	23:59:59	3,964,887	3,346,299	287,996	978,612	2,288,110		3,266,722
2020-12-07	23:59:59	4,010,827	3,412,619	264,506	1,007,666	2,247,619		3,255,285
2020-12-08	23:59:59	4,074,416	3,404,904	325,744	979,802	2,163,287		3,143,089
2020-12-09	23:59:59	3,914,464	3,304,934	288,040	971,710	2,260,392		3,232,102
2020-12-10	23:59:59	3,846,905	3,236,847	294,464	1,084,015	2,221,216		3,305,231
2020-12-11	23:59:59	3,909,313	3,315,939	285,289	942,674	2,137,586		3,080,260
2020-12-12	23:59:59	3,938,661	3,332,790	289,150	1,036,593	2,269,097		3,305,690
2020-12-13	23:59:59	4,271,385	3,481,560	450,227	1,002,863	2,309,344		3,312,207
2020-12-14	23:59:59	3,716,786	3,156,108	256,004	1,033,555	2,254,884		3,288,439
2020-12-15	23:59:59	3,948,215	3,075,452	621,384	893,411	2,172,652		3,066,063
2020-12-16	23:59:59	3,703,348	3,107,907	511,828	964,998	2,017,653		2,982,651
2020-12-17	23:59:59	3,852,002	3,212,720	327,971	925,187	2,186,139		3,111,326
2020-12-18	23:59:59	4,114,048	3,303,514	269,806	996,065	2,068,540		3,064,605
2020-12-19	23:59:59	3,903,230	3,160,753	300,189	938,340	2,127,533		3,065,873
2020-12-20	23:59:59	3,814,792	3,200,114	285,583	968,630	2,130,139		3,098,769
2020-12-21	23:59:59	3,886,651	3,224,961	312,210	1,061,872	2,162,827		3,224,699
2020-12-22	23:59:59	3,962,051	3,241,805	359,963	1,118,577	2,129,697		3,248,274
2020-12-23	23:59:59	4,021,131	3,286,964	368,225	1,007,525	2,165,593		3,173,118
2020-12-24	23:59:59	4,175,402	3,459,013	417,076	985,899	2,241,116		3,227,015
2020-12-25	23:59:59	4,060,432	3,353,970	355,767	1,027,536	2,390,130		3,417,666
2020-12-26	23:59:59	4,218,472	3,472,952	385,871	1,152,914	2,124,475		3,277,389
2020-12-27	23:59:59	3,875,477	3,185,918	340,585	1,004,694	2,080,508		3,085,202
2020-12-28	23:59:59	3,748,092	3,103,183	312,327	1,159,711	1,966,598		3,126,309
2020-12-29	23:59:59	3,612,953	2,946,964	310,388	1,009,205	1,873,249		2,882,454
2020-12-30	23:59:59	3,713,269	3,049,298	325,058	1,135,863	1,936,685		3,072,548
2020-12-31	23:59:59	3,875,057	3,196,985	344,136	1,049,865	2,155,404		3,205,269
<b>TOTAL:</b>		<b>121,713,570</b>	<b>101,062,284</b>	<b>10,394,532</b>	<b>31,643,171</b>	<b>67,096,466</b>		<b>98,739,637</b>
<b>MIN:</b>		<b>3,612,953</b>	<b>2,946,964</b>	<b>256,004</b>	<b>893,411</b>	<b>1,873,249</b>		<b>2,882,454</b>
<b>MAX:</b>		<b>4,271,385</b>	<b>3,514,998</b>	<b>621,384</b>	<b>1,159,711</b>	<b>2,390,130</b>		<b>3,452,110</b>
<b>AVG:</b>		<b>3,926,244</b>	<b>3,260,074</b>	<b>335,307</b>	<b>1,020,747</b>	<b>2,164,402</b>		<b>3,185,150</b>
<b>COUNT:</b>		<b>31</b>	<b>31</b>	<b>31</b>	<b>31</b>	<b>31</b>	<b>0</b>	<b>31</b>

**December 2020 Flows**

<u>Baldwin Gallons Usage</u>		<u>Baldwin Usage Info</u>	
Baldwin Main Meter	67,096,466	Baldwin Usage	66,727,391
Average of South Putnam Meters	369,075	Baldwin <b>December</b> Projected Usage	56,766,000
		Baldwin Excess Usage %	15%
		Baldwin % of Total Usage	68%
<b>BALDWIN GALLONS USED</b>	<b>66,727,391</b>	January Projected Usage	59,327,000

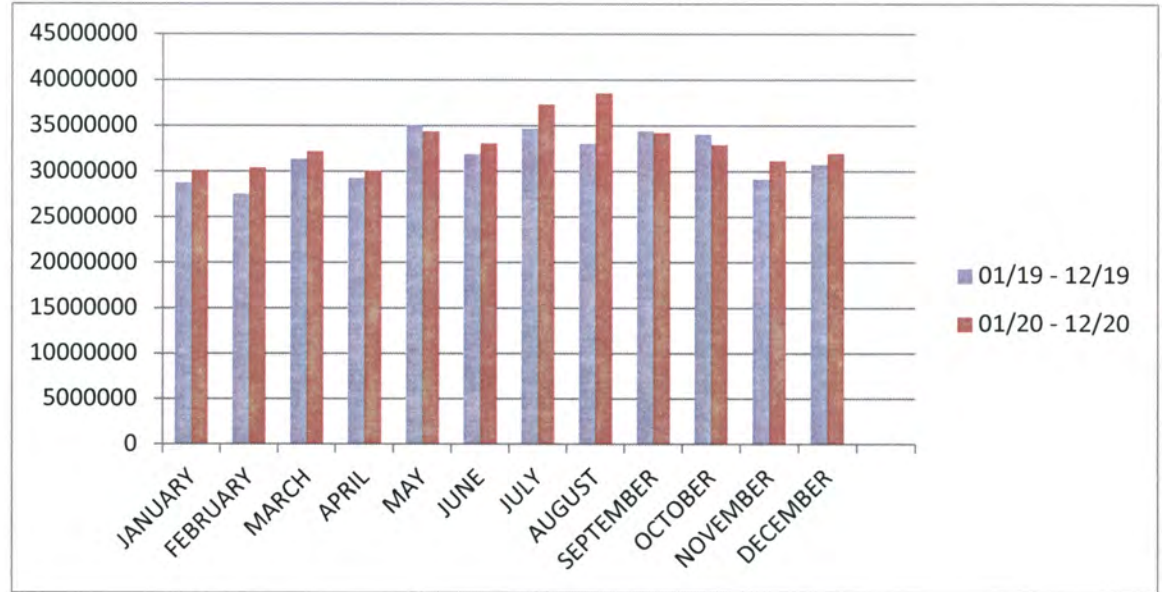
<u>Putnam Gallons Usage</u>		<u>Putnam Usage Info</u>	
Putnam Main Meter	31,643,171	Putnam Usage	32,012,246
Average of South Putnam Meters	369,075	Putnam <b>December</b> Projected Usage	28,194,000
		Putnam Excess Usage %	12%
		Putnam % of Total Usage	32%
<b>PUTNAM GALLONS USED</b>	<b>32,012,246</b>	January Projected Usage	31,617,000

Total of Gallons	98,739,637
Baldwin	68%
Putnam	32%
Total of Gallons	100%

# MONTHLY BILLABLE GALLONS FOR PUTNAM COUNTY

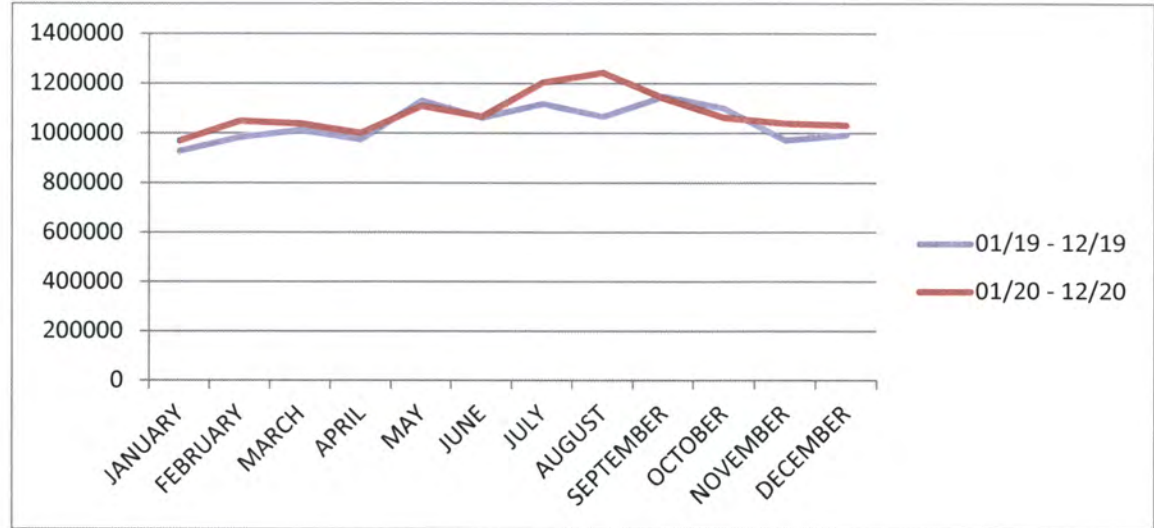
January 2019 Thru December 2020

	GALLONS 01/19 - 12/19	GALLONS 01/20 - 12/20
JANUARY	28818273	30123750
FEBRUARY	27584062	30434759
MARCH	31407865	32214416
APRIL	29285798	30061246
MAY	35124586	34404415
JUNE	31923228	33107645
JULY	34706334	37362638
AUGUST	33107378	38585492
SEPTEMBER	34482094	34265077
OCTOBER	34127326	32970729
NOVEMBER	29207270	31208446
DECEMBER	30826625	32012246



## MONTHLY FLOW RATES FOR PUTNAM COUNTY January 2019 Thru December 2020

	FLOWRATES* 01/19 - 12/19	FLOWRATES* 01/20 - 12/20
JANUARY	929621	971733
FEBRUARY	985145	1049474
MARCH	1013156	1039174
APRIL	976193	1002041
MAY	1133051	1109819
JUNE	1064107	1067988
JULY	1119559	1205246
AUGUST	1067979	1244693
SEPTEMBER	1149403	1142169
OCTOBER	1100881	1063571
NOVEMBER	973575	1040281
DECEMBER	994407	1032653

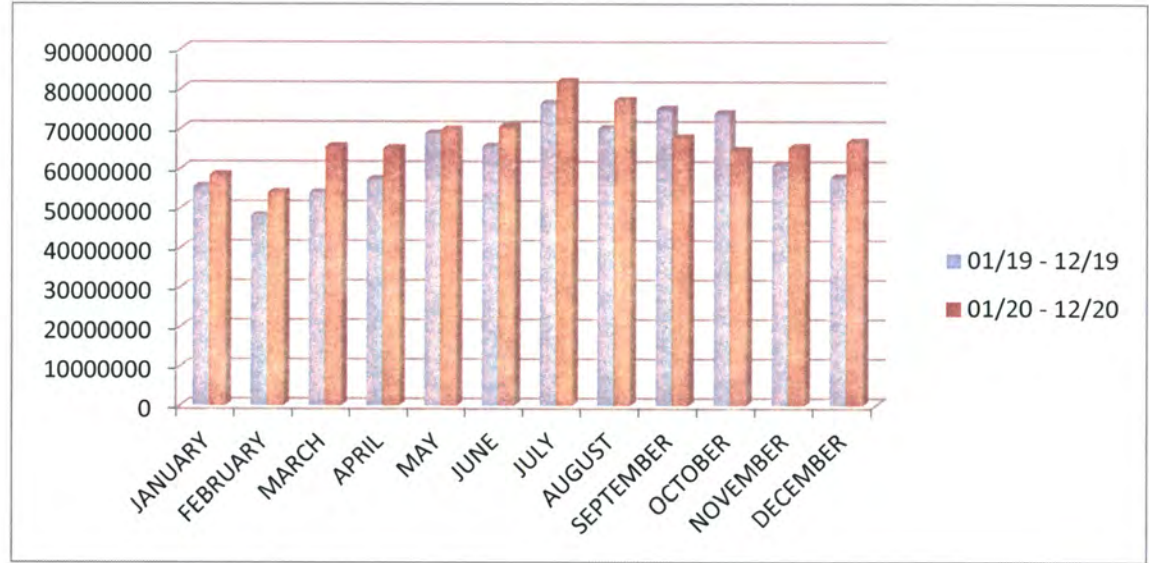


\*These figures are the average daily flow each month for Putnam County  
These figures are based on the billable gallons for each month



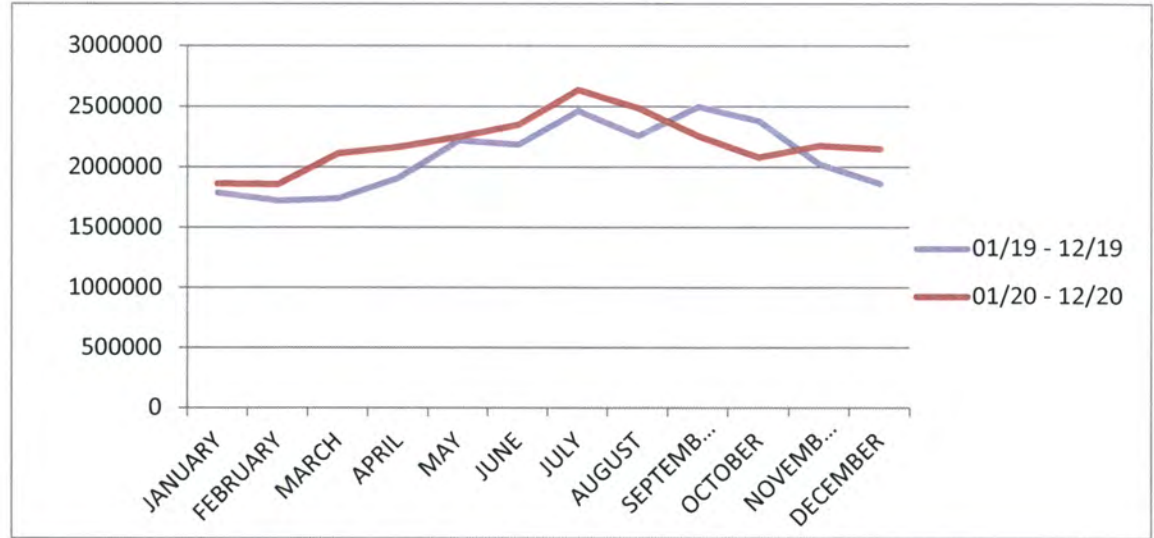
## MONTHLY BILLABLE GALLONS FOR BALDWIN COUNTY January 2019 Thru December 2020

	GALLONS 01/19 - 12/19	GALLONS 01/20 - 12/20
JANUARY	55462219	58385430
FEBRUARY	48265800	53967113
MARCH	53973721	65541932
APRIL	57353719	65051465
MAY	68890222	69800065
JUNE	65651546	70541369
JULY	76455716	81858675
AUGUST	70112600	77166156
SEPTEMBER	75008158	67710920
OCTOBER	73905735	64551807
NOVEMBER	60834801	65362489
DECEMBER	57773211	66727391



### MONTHLY FLOW RATES FOR BALDWIN COUNTY January 2019 Thru December 2020

	FLOWRATES* 01/19 - 12/19	FLOWRATES* 01/20 - 12/20
JANUARY	1789103	1864968
FEBRUARY	1723778	1860934
MARCH	1741087	2114255
APRIL	1911790	2168382
MAY	2222265	2251615
JUNE	2188384	2351378
JULY	2466313	2640602
AUGUST	2261696	2489230
SEPTEMBER	2500271	2257030
OCTOBER	2384055	2082316
NOVEMBER	2027826	2178749
DECEMBER	1863651	2152496



\*These figures are the average daily flow each month for Baldwin County  
These figures are based on the billable gallons for each month

# Flows Monthly Report

Date	Time	Raw	Permeate	Lagoon	Putnam	Baldwin	Choby's	Total Dist
2020-11-01	23:59:59	4,092,701	3,460,555	313,405	1,161,665	2,229,917		3,391,582
2020-11-02	23:59:59	3,862,390	3,257,533	282,804	925,090	2,248,391		3,173,481
2020-11-03	23:59:59	3,863,900	3,259,839	301,620	909,922	2,119,299		3,029,221
2020-11-04	23:59:59	3,995,075	3,359,867	315,290	1,240,701	2,232,286		3,472,987
2020-11-05	23:59:59	3,880,459	3,262,652	308,210	946,086	2,174,308		3,120,394
2020-11-06	23:59:59	3,794,730	3,203,538	278,565	969,451	2,125,590		3,095,041
2020-11-07	23:59:59	4,079,028	3,429,612	328,635	1,100,483	2,279,786		3,380,269
2020-11-08	23:59:59	3,877,871	3,284,164	288,315	1,027,592	2,307,389		3,334,981
2020-11-09	23:59:59	4,031,325	3,422,773	286,128	937,124	2,230,922		3,168,046
2020-11-10	23:59:59	3,881,774	3,265,023	309,482	961,277	2,071,849		3,033,126
2020-11-11	23:59:59	3,630,123	3,025,275	331,426	1,047,129	2,081,405		3,128,534
2020-11-12	23:59:59	3,779,941	3,175,761	363,965	1,009,872	2,155,449		3,165,321
2020-11-13	23:59:59	3,832,190	3,231,968	308,807	958,965	1,978,300		2,937,265
2020-11-14	23:59:59	4,007,850	3,358,263	328,345	1,164,148	2,324,446		3,488,594
2020-11-15	23:59:59	3,939,134	3,316,155	322,624	1,015,270	2,166,651		3,181,921
2020-11-16	23:59:59	3,812,178	3,220,178	279,802	938,475	2,178,451		3,116,926
2020-11-17	23:59:59	3,633,121	3,056,985	267,863	906,128	2,109,280		3,015,408
2020-11-18	23:59:59	3,890,421	3,277,686	293,322	1,128,594	2,117,867		3,246,461
2020-11-19	23:59:59	3,886,474	3,280,780	302,902	988,553	2,148,307		3,136,860
2020-11-20	23:59:59	3,858,766	3,247,664	300,059	926,030	2,163,197		3,089,227
2020-11-21	23:59:59	3,957,322	3,318,141	311,247	1,024,151	2,310,633		3,334,784
2020-11-22	23:59:59	3,993,273	3,346,532	321,564	1,085,964	2,247,269		3,333,233
2020-11-23	23:59:59	4,093,661	3,488,288	281,641	1,042,758	2,152,510		3,195,268
2020-11-24	23:59:59	3,951,595	3,334,914	293,753	1,064,911	2,234,137		3,299,048
2020-11-25	23:59:59	3,775,472	3,187,196	290,478	1,058,891	2,283,334		3,342,225
2020-11-26	23:59:59	4,197,730	3,571,444	310,545	973,738	2,196,857		3,170,595
2020-11-27	23:59:59	3,983,599	3,355,504	304,720	1,231,758	2,206,383		3,438,141
2020-11-28	23:59:59	4,076,844	3,468,801	302,500	1,009,893	2,239,510		3,249,403
2020-11-29	23:59:59	3,973,075	3,361,588	300,557	977,756	2,216,937		3,194,693
2020-11-30	23:59:59	3,866,738	3,266,917	286,406	1,106,996	2,200,904		3,307,900
<b>TOTAL:</b>		<b>117,498,760</b>	<b>99,095,596</b>	<b>9,114,980</b>	<b>30,839,371</b>	<b>65,731,564</b>		<b>96,570,935</b>
<b>MIN:</b>		<b>3,630,123</b>	<b>3,025,275</b>	<b>267,863</b>	<b>906,128</b>	<b>1,978,300</b>		<b>2,937,265</b>
<b>MAX:</b>		<b>4,197,730</b>	<b>3,571,444</b>	<b>363,965</b>	<b>1,240,701</b>	<b>2,324,446</b>		<b>3,488,594</b>
<b>AVG:</b>		<b>3,916,625</b>	<b>3,303,187</b>	<b>303,833</b>	<b>1,027,979</b>	<b>2,191,052</b>		<b>3,219,031</b>
<b>COUNT:</b>		<b>30</b>	<b>30</b>	<b>30</b>	<b>30</b>	<b>30</b>	<b>0</b>	<b>30</b>



# November 2020 Flows

## Baldwin Gallons Usage

Baldwin Main Meter	65,731,564
Average of South Putnam Meters	369,075

<b>BALDWIN GALLONS USED</b>	<b>65,362,489</b>
-----------------------------	-------------------

## Baldwin Usage Info

Baldwin Usage	65,362,489
Baldwin <b>November</b> Projected Usage	58,139,000
Baldwin Excess Usage %	11%
Baldwin % of Total Usage	68%
<b>December</b> Projected Usage	56,766,000

## Putnam Gallons Usage

Putnam Main Meter	30,839,371
Average of South Putnam Meters	369,075

<b>PUTNAM GALLONS USED</b>	<b>31,208,446</b>
----------------------------	-------------------

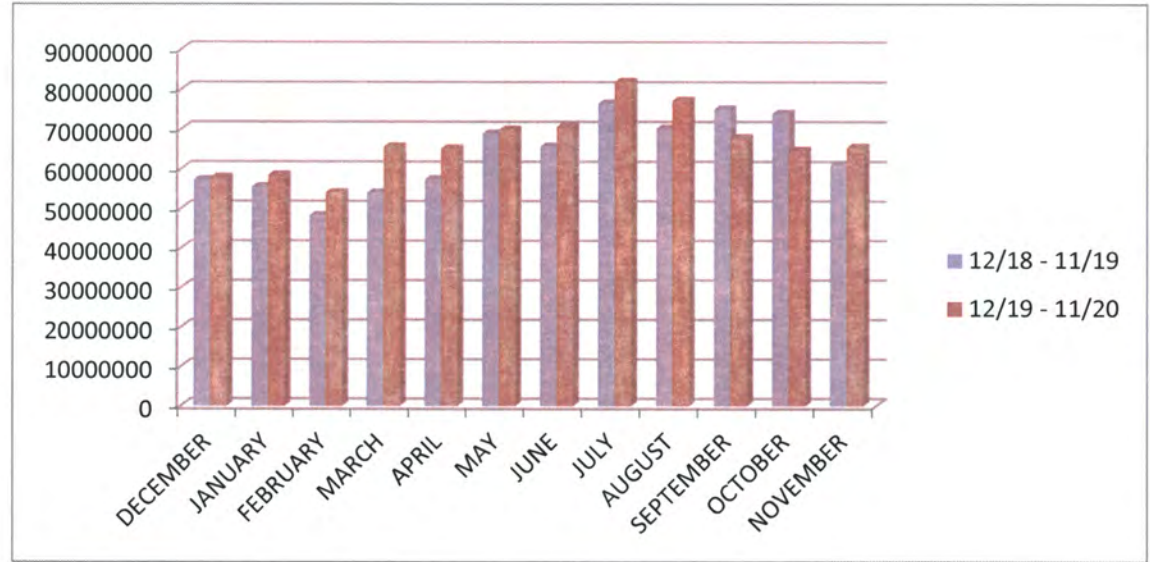
## Putnam Usage Info

Putnam Usage	31,208,446
Putnam <b>November</b> Projected Usage	28,269,000
Putnam Excess Usage %	9%
Putnam % of Total Usage	32%
<b>December</b> Projected Usage	28,194,000

Total of Gallons	96,570,935
Baldwin	68%
Putnam	32%
Total of Gallons	100%

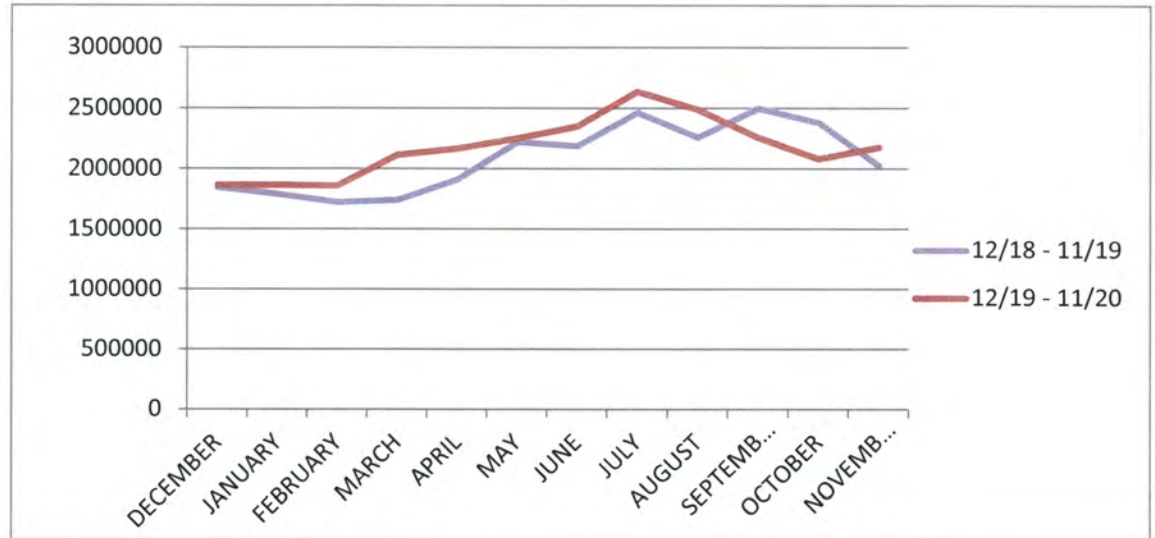
### MONTHLY BILLABLE GALLONS FOR BALDWIN COUNTY December 2018 Thru November 2020

	GALLONS 12/18 - 11/19	GALLONS 12/19 - 11/20
DECEMBER	57218316	57773211
JANUARY	55462219	58385430
FEBRUARY	48265800	53967113
MARCH	53973721	65541932
APRIL	57353719	65051465
MAY	68890222	69800065
JUNE	65651546	70541369
JULY	76455716	81858675
AUGUST	70112600	77166156
SEPTEMBER	75008158	67710920
OCTOBER	73905735	64551807
NOVEMBER	60834801	65362489



### MONTHLY FLOW RATES FOR BALDWIN COUNTY December 2018 Thru November 2020

	FLOWRATES* 12/18 - 11/19	FLOWRATES* 12/19 - 11/20
DECEMBER	1845752	1863651
JANUARY	1789103	1864968
FEBRUARY	1723778	1860934
MARCH	1741087	2114255
APRIL	1911790	2168382
MAY	2222265	2251615
JUNE	2188384	2351378
JULY	2466313	2640602
AUGUST	2261696	2489230
SEPTEMBER	2500271	2257030
OCTOBER	2384055	2082316
NOVEMBER	2027826	2178749

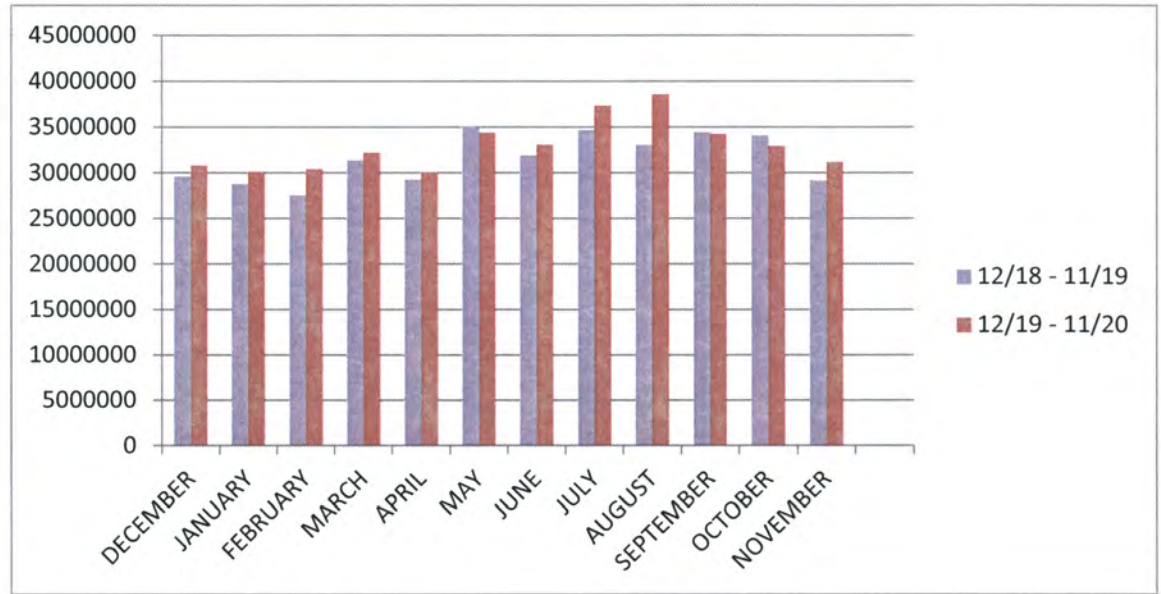


\*These figures are the average daily flow each month for Baldwin County  
These figures are based on the billable gallons for each month



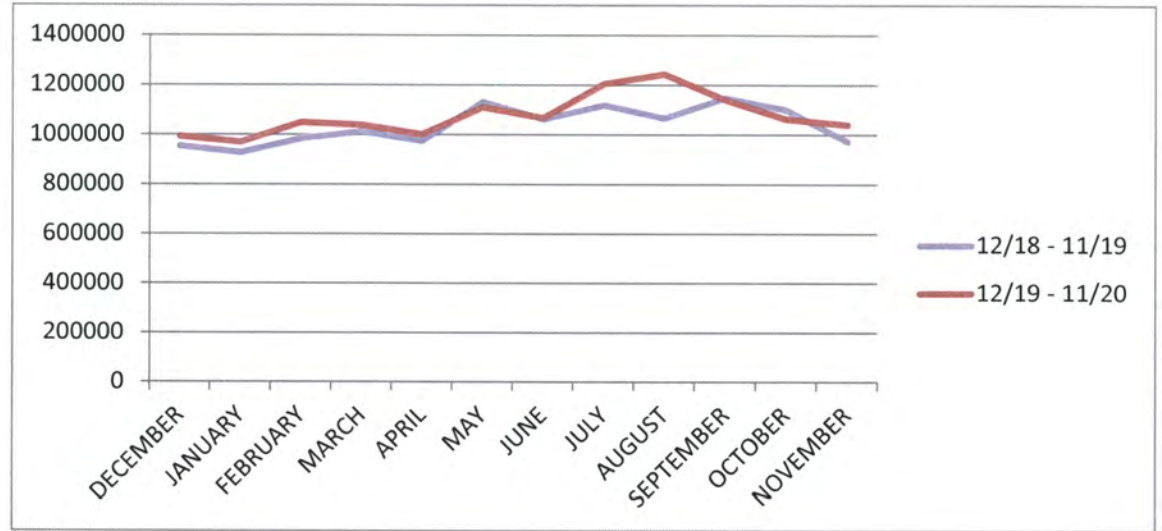
### MONTHLY BILLABLE GALLONS FOR PUTNAM COUNTY December 2018 Thru November 2020

	GALLONS 12/18 - 11/19	GALLONS 12/19 - 11/20
DECEMBER	29621963	30826625
JANUARY	28818273	30123750
FEBRUARY	27584062	30434759
MARCH	31407865	32214416
APRIL	29285798	30061246
MAY	35124586	34404415
JUNE	31923228	33107645
JULY	34706334	37362638
AUGUST	33107378	38585492
SEPTEMBER	34482094	34265077
OCTOBER	34127326	32970729
NOVEMBER	29207270	31208446



### MONTHLY FLOW RATES FOR PUTNAM COUNTY December 2018 Thru November 2020

	FLOWRATES* 12/18 - 11/19	FLOWRATES* 12/19 - 11/20
DECEMBER	955547	994407
JANUARY	929621	971733
FEBRUARY	985145	1049474
MARCH	1013156	1039174
APRIL	976193	1002041
MAY	1133051	1109819
JUNE	1064107	1067988
JULY	1119559	1205246
AUGUST	1067979	1244693
SEPTEMBER	1149403	1142169
OCTOBER	1100881	1063571
NOVEMBER	973575	1040281



\*These figures are the average daily flow each month for Putnam County  
These figures are based on the billable gallons for each month

**File Attachments for Item:**

7. Financial Reports

Sinclair Water Authority

126 Cay Dr.  
Milledgeville, GA 31061

**Invoice** 23

Date	Invoice #
12/31/2020	306

Bill To
Baldwin County Board of Commissioners 121 N. Wilkinson St. Ate 314 Milledgeville, GA 31061

Description	Qty	Rate	Amount
Baldwin Monthly Water Sales		92,948.45	92,948.45
SWA Total Distribution -98,739,637			
Baldwin Main Meter as of December 31, 2020 - 67,096,466			
Average of South Putnam Meters - 369,075			
Baldwin Gallons Used - 66,727,391			
BaldwinDecember Projected Usage - 56,766,000			
Baldwin Excess Usage - 15%			
Baldwin % of Total Usage - 68%			
Baldwin January 2021 Projections - 59,327,000			

	<b>Total</b>	\$92,948.45
--	--------------	-------------

Sinclair Water Authority

126 Cay Dr.  
Milledgeville, GA 31061

**Invoice** 24

Date	Invoice #
12/31/2020	307

Bill To
Putnam Co. Board of Commissioners 117 Putnam Drive Suite A Eatonton, GA 31024

Description	Qty	Rate	Amount
Putnam Water Sales		76,048.74	76,048.74
SWA Total Distribution - 98,739,637			
Putnam Main Meter as of December 31, 2020 - 31,643,171			
South Putnam Meters average = 369,075			
Putnam Gallons Used - 32,012,246			
Putnam December Projected Usage - 28,194,000			
Putnam Excess Usage - 12%			
Putnam % of Total Usage - 32%			
Putnam January 2021 Projections - 31,617,000			

<b>Total</b>			\$76,048.74
--------------	--	--	-------------



Sinclair Water Authority  
 126 Cay Dr.  
 Milledgeville, GA 31061

Date	Invoice #
11/30/2020	304

<b>Bill To</b>
Baldwin County Board of Commissioners 121 N. Wilkinson St. Ate 314 Milledgeville, GA 31061

Description	Qty	Rate	Amount
Baldwin Monthly Water Sales		92,948.45	92,948.45
SWA Total Distribution -96570935 Baldwin Main Meter as of November 30, 2020 - 65731564 Average of South Putnam Meters - 369,075 Baldwin Gallons Used - 65362489 Baldwin November Projected Usage - 58139000 Baldwin Excess Usage - 11% Baldwin % of Total Usage - 68% Baldwin December Projections - 56766000			

		<b>Total</b>	\$92,948.45
--	--	--------------	-------------

Sinclair Water Authority  
 126 Cay Dr.  
 Milledgeville, GA 31061

Date	Invoice #
11/30/2020	305

<b>Bill To</b>
Putnam Co. Board of Commissioners 117 Putnam Drive Suite A Eatonton, GA 31024

Description	Qty	Rate	Amount
Putnam Water Sales		76,048.74	76,048.74
SWA Total Distribution - 96570935 Putnam Main Meter as of November 30, 2020 - 30839371 South Putnam Meters average = 369,075 Putnam Gallons Used - 31208446 Putnam November Projected Usage - 28269000 Putnam Excess Usage - 9% Putnam % of Total Usage - 32% Putnam December Projections - 28194000			

	<b>Total</b>	\$76,048.74
--	--------------	-------------

**Sinclair Water Authority**  
**Profit & Loss Budget vs. Actual**  
 January through December 2020

	Jan - Dec 20	Budget	\$ Over Budget	% of Budget
<b>Ordinary Income/Expense</b>				
<b>Income</b>				
34.4200 · Water sales				
34.4210 · Water sales - Baldwin	1,104,658.07	1,087,250.88	17,407.19	101.6%
34.4220 · Water sales - Putnam	917,894.77	935,301.96	-17,407.19	98.1%
<b>Total 34.4200 · Water sales</b>	<b>2,022,552.84</b>	<b>2,022,552.84</b>	<b>0.00</b>	<b>100.0%</b>
36.1000 · Interest Earned	6,127.04	18,000.00	-11,872.96	34.0%
<b>Total Income</b>	<b>2,028,679.88</b>	<b>2,040,552.84</b>	<b>-11,872.96</b>	<b>99.4%</b>
<b>Gross Profit</b>	<b>2,028,679.88</b>	<b>2,040,552.84</b>	<b>-11,872.96</b>	<b>99.4%</b>
<b>Expense</b>				
51 · Pers Serv & Benefits				
51.1000 · Salaries and wages				
51.1100 · Salaries & Wages-Regular	312,881.19	319,373.00	-6,491.81	98.0%
51.1400 · Salaries & Wages - Other	22,661.10	31,435.00	-8,773.90	72.1%
<b>Total 51.1000 · Salaries and wages</b>	<b>335,542.29</b>	<b>350,808.00</b>	<b>-15,265.71</b>	<b>95.6%</b>
51.2000 · Employee Benefits				
51.2100 · Group Health Insurance	62,434.60	73,000.00	-10,565.40	85.5%
51.2120 · BCBS-Dental	4,406.16	3,010.00	1,396.16	146.4%
51.2130 · BCBS-Vision	506.04	418.00	88.04	121.1%
51.2200 · Social Security (FICA)	19,708.60	21,750.00	-2,041.40	90.6%
51.2300 · Medicare	4,609.31	5,087.00	-477.69	90.6%
51.2400 · Retirement Plan Base Contr	5,481.24	5,504.00	-22.76	99.6%
51.2450 · Retirement Plan Match	7,918.95	8,256.00	-337.05	95.9%
51.2460 · Pension Plan	6,729.00	6,500.00	229.00	103.5%
51.2700 · Workers' Compensation	14,409.00	20,000.00	-5,591.00	72.0%
51.2900 · Group Life Insurance	2,653.32	3,300.00	-646.68	80.4%
51.2950 · Other Employee Benefits	200.00	300.00	-100.00	66.7%
<b>Total 51.2000 · Employee Benefits</b>	<b>129,056.22</b>	<b>147,125.00</b>	<b>-18,068.78</b>	<b>87.7%</b>
<b>Total 51 · Pers Serv &amp; Benefits</b>	<b>464,598.51</b>	<b>497,933.00</b>	<b>-33,334.49</b>	<b>93.3%</b>
52 · Services				
52.1000 · Professional & technical				
52.1200 · Professional services				
52.1210 · Legal Fees	775.50	1,100.00	-324.50	70.5%
52.1220 · Accounting Services	30,410.32	25,600.00	4,810.32	118.8%
<b>Total 52.1200 · Professional services</b>	<b>31,185.82</b>	<b>26,700.00</b>	<b>4,485.82</b>	<b>116.8%</b>
52.1300 · Technical services				
52.1310 · Engineering	2,450.00	7,500.00	-5,050.00	32.7%
52.1320 · Computer Services	1,955.74	2,100.00	-144.26	93.1%

**Sinclair Water Authority**  
**Profit & Loss Budget vs. Actual**  
 January through December 2020

	Jan - Dec 20	Budget	\$ Over Budget	% of Budget
52.1330 · Laboratory Testing	28,122.29	26,500.00	1,622.29	106.1%
52.1340 · Payroll Processing	2,393.71	2,600.00	-206.29	92.1%
<b>Total 52.1300 · Technical services</b>	<b>34,921.74</b>	<b>38,700.00</b>	<b>-3,778.26</b>	<b>90.2%</b>
<b>Total 52.1000 · Professional &amp; technical</b>	<b>66,107.56</b>	<b>65,400.00</b>	<b>707.56</b>	<b>101.1%</b>
52.2000 · Property services				
52.2150 · Alum Sludge Disposal	40,823.63	11,000.00	29,823.63	371.1%
52.2210 · Building Maintenance	28,893.61	20,000.00	8,893.61	144.5%
52.2220 · Equipment Maintenance	70,183.31	52,000.00	18,183.31	135.0%
52.2230 · Automobile Expense	328.93	1,000.00	-671.07	32.9%
52.2700 · Membrane Maintenance Services	0.00	19,278.00	-19,278.00	0.0%
<b>Total 52.2000 · Property services</b>	<b>140,229.48</b>	<b>103,278.00</b>	<b>36,951.48</b>	<b>135.8%</b>
52.3000 · Other services				
52.3100 · Insurance Expense	25,642.00	27,500.00	-1,858.00	93.2%
52.3200 · Telephone (communications)	3,913.24	4,250.00	-336.76	92.1%
52.3300 · Advertising	256.00	750.00	-494.00	34.1%
52.3500 · Travel Expense	2,259.91	4,000.00	-1,740.09	56.5%
52.3600 · Dues and fees	735.54	400.00	335.54	183.9%
52.3700 · Education Training	836.00	3,900.00	-3,064.00	21.4%
52.3850 · Contract Labor	4,275.00	3,169.00	1,106.00	134.9%
<b>Total 52.3000 · Other services</b>	<b>37,917.69</b>	<b>43,969.00</b>	<b>-6,051.31</b>	<b>86.2%</b>
<b>Total 52 · Services</b>	<b>244,254.73</b>	<b>212,647.00</b>	<b>31,607.73</b>	<b>114.9%</b>
53 · Supplies				
53.1100 · Office Supplies	5,085.04	5,000.00	85.04	101.7%
53.1135 · Chemicals	280,519.28	241,193.00	39,326.28	116.3%
53.1140 · Laboratory Supplies	16,353.17	21,000.00	-4,646.83	77.9%
53.1150 · Safety Items	2,504.06	1,400.00	1,104.06	178.9%
53.1200 · Utilities / Energy	153,828.87	168,000.00	-14,171.13	91.6%
53.1220 · Raw Water Withdrawal	52,679.74	50,000.00	2,679.74	105.4%
53.1270 · Gasoline	758.69	2,000.00	-1,241.31	37.9%
53.1710 · Uniforms	931.15	1,225.00	-293.85	76.0%
<b>Total 53 · Supplies</b>	<b>512,660.00</b>	<b>489,818.00</b>	<b>22,842.00</b>	<b>104.7%</b>
66700 · Professional Fees	0.00			
<b>Total Expense</b>	<b>1,221,513.24</b>	<b>1,200,398.00</b>	<b>21,115.24</b>	<b>101.8%</b>
<b>Net Ordinary Income</b>	<b>807,166.64</b>	<b>840,154.84</b>	<b>-32,988.20</b>	<b>96.1%</b>
Other Income/Expense				
Other Expense				
56 · Depreciation & amortization				

**Sinclair Water Authority**  
**Profit & Loss Budget vs. Actual**  
 January through December 2020

	Jan - Dec 20	Budget	\$ Over Budget	% of Budget
56.1000 · Depreciation Expense	0.00			
56.1500 · Membrane Replacement Contract	0.00	121,500.00	-121,500.00	0.0%
<b>Total 56 · Depreciation &amp; amortization</b>	<b>0.00</b>	<b>121,500.00</b>	<b>-121,500.00</b>	<b>0.0%</b>
<b>58 · Debt service</b>				
58.1330 · GEFA Loan #1 Principal	0.00	6,300.00	-6,300.00	0.0%
58.1340 · GEFA Loan #2 Principal	0.00	44,300.00	-44,300.00	0.0%
58.2310 · GEFA Loan #1 Interest Expense	1,060.45	2,100.00	-1,039.55	50.5%
58.2320 · GEFA Loan #2 Interest Expense	10,350.78	20,500.00	-10,149.22	50.5%
58.2350 · Series 2019 Interest	641,290.86	645,455.00	-4,164.14	99.4%
<b>Total 58 · Debt service</b>	<b>652,702.09</b>	<b>718,655.00</b>	<b>-65,952.91</b>	<b>90.8%</b>
<b>Total Other Expense</b>	<b>652,702.09</b>	<b>840,155.00</b>	<b>-187,452.91</b>	<b>77.7%</b>
<b>Net Other Income</b>	<b>-652,702.09</b>	<b>-840,155.00</b>	<b>187,452.91</b>	<b>77.7%</b>
<b>Net Income</b>	<b>154,464.55</b>	<b>-0.16</b>	<b>154,464.71</b>	<b>-96,540,343.8%</b>

	<u>Dec 31, 20</u>
<b>ASSETS</b>	
<b>Current Assets</b>	
<b>Checking/Savings</b>	
11.1100 · Cash	
11.1111 · Exchange Bank Operating	208,361.20
11.1112 · Exchange - Payroll	5,000.00
11.1120 · Exchange-USDA Reserve	160,785.30
11.1140 · CD - USDA Reserve	264,921.91
	<hr/>
<b>Total 11.1100 · Cash</b>	639,068.41
11.1150 · Petty Cash	100.00
	<hr/>
<b>Total Checking/Savings</b>	639,168.41
<b>Accounts Receivable</b>	
11.1900 · Accounts Receivable	168,997.19
	<hr/>
<b>Total Accounts Receivable</b>	168,997.19
<b>Other Current Assets</b>	
11.3800 · Prepaid Assets	36,603.40
	<hr/>
<b>Total Other Current Assets</b>	36,603.40
	<hr/>
<b>Total Current Assets</b>	844,769.00
<b>Fixed Assets</b>	
11.7100 · Land & Row	76,763.35
11.7400 · Water Treatment Plant	18,828,423.46
11.7410 · Accum Depr-Buildings	-6,862,414.92
11.7500 · Machinery and Equipment	110,702.80
11.7510 · Accum Depr-Machinery & Equip	-77,336.64
11.7620 · CIP - Membrane Replacement	286,571.58
11.7630 · CIP-CL02 Project	45,956.39
	<hr/>
<b>Total Fixed Assets</b>	12,408,666.02

Sinclair Water Authority  
**Balance Sheet**  
As of December 31, 2020

	<u>Dec 31, 20</u>
<b>Other Assets</b>	
11.9000 · Deferred Outflows of Resources	
11.9300 · Defrred Outflw of Resrc-Pension	6,388.00
<b>Total 11.9000 · Deferred Outflows of Resources</b>	<u>6,388.00</u>
<b>Total Other Assets</b>	<u>6,388.00</u>
<b>TOTAL ASSETS</b>	<u><u>13,259,823.02</u></u>
<b>LIABILITIES &amp; EQUITY</b>	
<b>Liabilities</b>	
<b>Current Liabilities</b>	
<b>Credit Cards</b>	
12.1122 · VISA	2,564.77
<b>Total Credit Cards</b>	<u>2,564.77</u>
<b>Other Current Liabilities</b>	
12.1300 · Payroll Deductions Payable	
12.1310 · BCBS-Dental	3,167.24
12.1312 · AFLAC	-90.20
12.1315 · BCBS-Vision	257.14
12.1320 · Group Health Insurance	7,325.47
12.1330 · Social Security (FICA)	-0.03
12.1390 · 457 Plan Deductions	-35.74
12.1395 · Life Insurance - voluntary	-109.76
<b>Total 12.1300 · Payroll Deductions Payable</b>	<u>10,514.12</u>
12.1400 · Emplyr's part of E-yeer Benefits	
12.1420 · Group Health Insurance	2,999.11
<b>Total 12.1400 · Emplyr's part of E-yeer Ben...</b>	<u>2,999.11</u>
12.1435 · Compensated Absences Payable	5,752.12
<b>Total Other Current Liabilities</b>	<u>19,265.35</u>
<b>Total Current Liabilities</b>	<u>21,830.12</u>
<b>Long Term Liabilities</b>	
12.5265 · Net Pension Liability	-5,670.00

Sinclair Water Authority  
**Balance Sheet**  
As of December 31, 2020

	<u>Dec 31, 20</u>
12.5300 · Notes Payable non-current	
12.5310 · USDA Loan	12,734,509.79
12.5320 · GEFA Loan Payable 2013	97,770.13
12.5330 · GEFA Loan Payable 2014	883,330.89
	<hr/>
Total 12.5300 · Notes Payable non-current	13,715,610.81
12.9000 · Deferred Inflows of Resources	
12.9300 · Deferd Inflows of Resrs-Pension	8,992.00
	<hr/>
Total 12.9000 · Deferred Inflows of Resources	8,992.00
	<hr/>
Total Long Term Liabilities	13,718,932.81
	<hr/>
Total Liabilities	13,740,762.93
Equity	
13.2400 · Contributed Capital-USDA	1,907,000.00
13.3700 · Retained Earnings	-2,395,387.14
13.3790 · Prior Period Adjustment	13,956.25
13.3791 · PPA-Change in Accounting Method	-46,757.57
13.3792 · PPA-Change in Acctg Principle	-114,216.00
Net Income	154,464.55
	<hr/>
Total Equity	-480,939.91
	<hr/>
<b>TOTAL LIABILITIES &amp; EQUITY</b>	<b>13,259,823.02</b>
	<hr/> <hr/>