



# Agenda

Park & Rec Meeting

City Hall

Monday November 17<sup>th</sup>, 2025 - 5:15 PM

**Park and Recreation**

[www.oelweinparks.org](http://www.oelweinparks.org)

**Call to Order:**

**Roll Call:** Cantrell, Bouska, Gearhart, Johnson, Jorgensen, Meska, Stasi

**Attending:**

**Absent:**

**Approval of Minutes:**

- Consideration of a motion approving the minutes of the September 15<sup>th</sup>, 2025, meeting:

Motion: 2<sup>nd</sup>:

Aye: Nay:

**Citizen Comments:**

**Tree Board Updates:**

**Parks / Cemetery Updates:**

**Trail Segment 2 Updates:**

**Fee Schedule:**

- Consideration of a motion approving the fee schedule for 2026:

Motion: 2<sup>nd</sup>:

Aye: Nay:

**Board Member Updates:**

**Adjournment:**

**Next Meeting: January 2026**

---

In compliance with the Americans with Disabilities Act, those requiring accommodation for city meetings should notify city hall at least 24 hours prior to the meeting at 319-283-5440.



## Agenda – No Quorum

Park & Rec Meeting

City Park – Railroad Shelter

Monday October 20<sup>th</sup>, 2025 - 5:15 PM

**Park and Recreation**

[www.oelweinparks.org](http://www.oelweinparks.org)

### **Call to Order:**

**Roll Call:** Cantrell, Bouska, Gearhart, Johnson, Jorgensen, Meska, Stasi

### **Attending:**

### **Absent:**

### **Approval of Minutes:**

- Consideration of a motion approving the minutes of the September 15<sup>th</sup>, 2025, meeting:

Motion:

2<sup>nd</sup>:

Aye:

Nay:

### **Citizen Comments:**

### **Tree Board:**

- Trees for Kids planting
- Trees Forever planting
- Gravel bed trees
- IRA Tree planting grant

### **Parks / Cemetery Updates:**

### **Trail Segment 2 Updates:**

### **Fee Discussion:**

### **Board Member Updates:**

### **Adjournment:**

### **Next Meeting:**

---

In compliance with the Americans with Disabilities Act, those requiring accommodation for city meetings should notify city hall at least 24 hours prior to the meeting at 319-283-5440.





# OCTOBER 2025 PARK MONTHLY REPORT

## TREE BOARD UPDATE:

TREES FOR KIDS GRANT -\$2,500

OCTOBER 1ST

PARKS / CEMETERY / TRAILS / AQUATICS / CAMPGROUND







TREES FOREVER GRANT - \$5,000

OCTOBER 15TH











**PARK / CEMETERY UPDATE:**



















**Oelwein Daily Register**

October 10 at 8:09 AM · ⚙️



Athletes, trail walkers and their four-legged counterparts will enjoy outdoor activities more with the new addition of a water fountain recently installed at Veterans Sports Complex.



COMMUNITYNEWSPAPERGROUP.COM

### Veterans Sports Complex gets new fountain thanks to grant

Athletes, trail walkers and their four-legged counterparts will enjoy outdoor activities more wit...

👍❤️👏 28

3 shares

👍 Like

💬 Comment

➦ Share

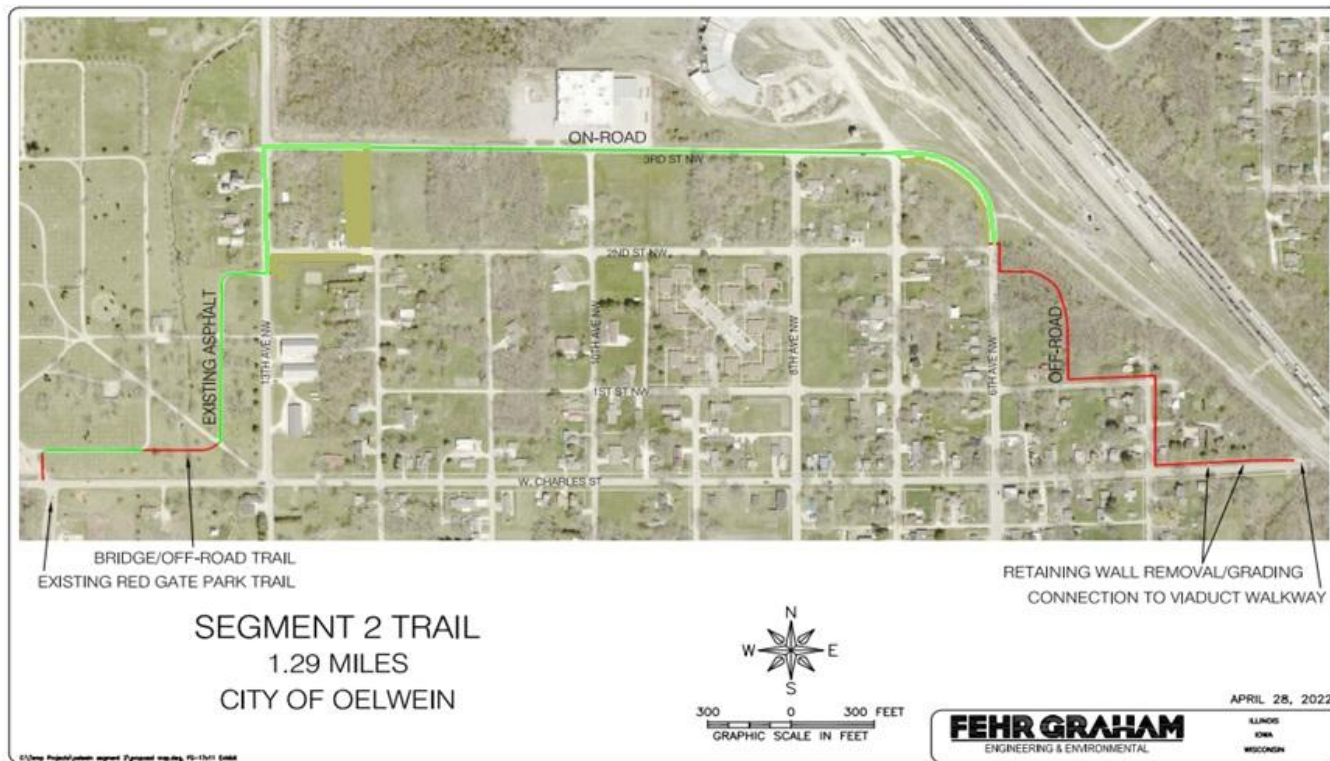


Comment as City of Oelwein





## TRAILS UPDATE:



## FUNDING:

|                     |                     |
|---------------------|---------------------|
| • PRIVATE DONATIONS | \$83,737.18         |
| • REAP GRANT        | \$100,000           |
| • FOUNDATION        | <u>\$246,006.47</u> |
| PROJECT BID         | \$429,743.65        |

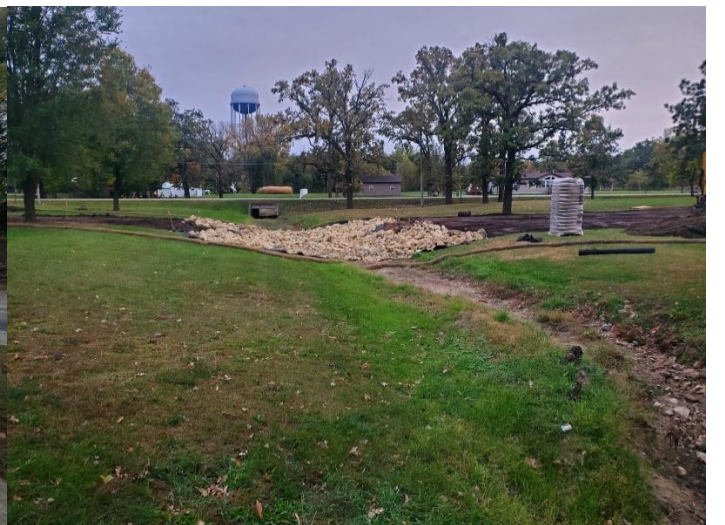




SEGMENT 2













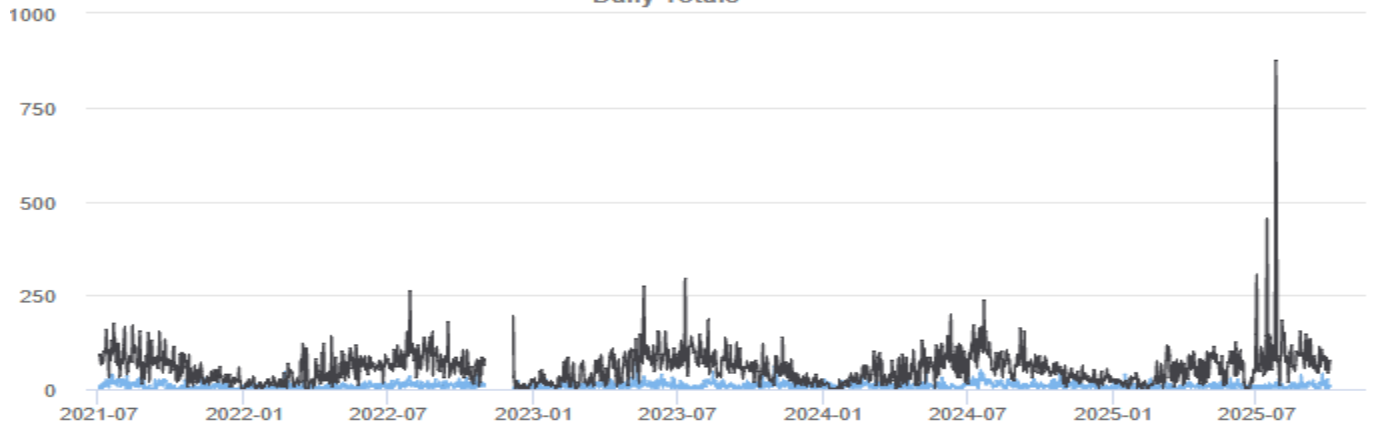


## Daily/Weekly/Monthly totals

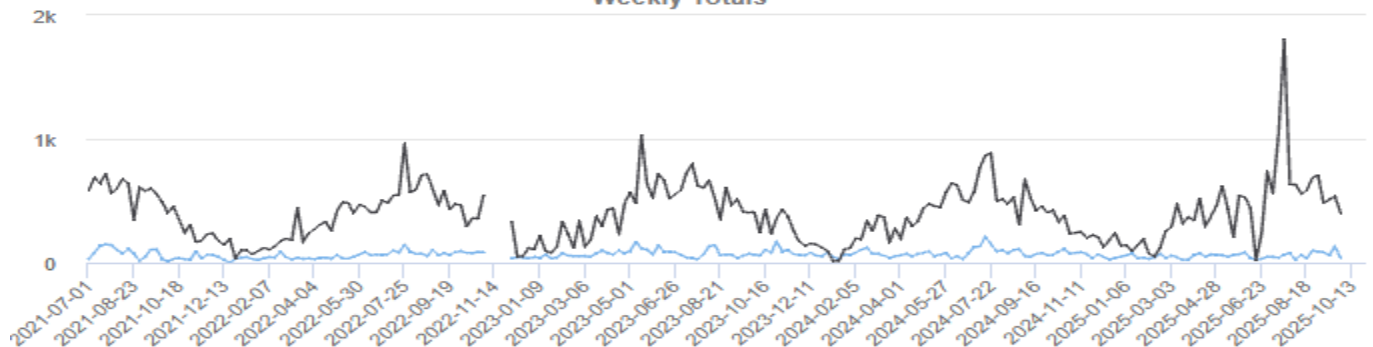
2021-07-01 to 2025-10-31 (1584 days)



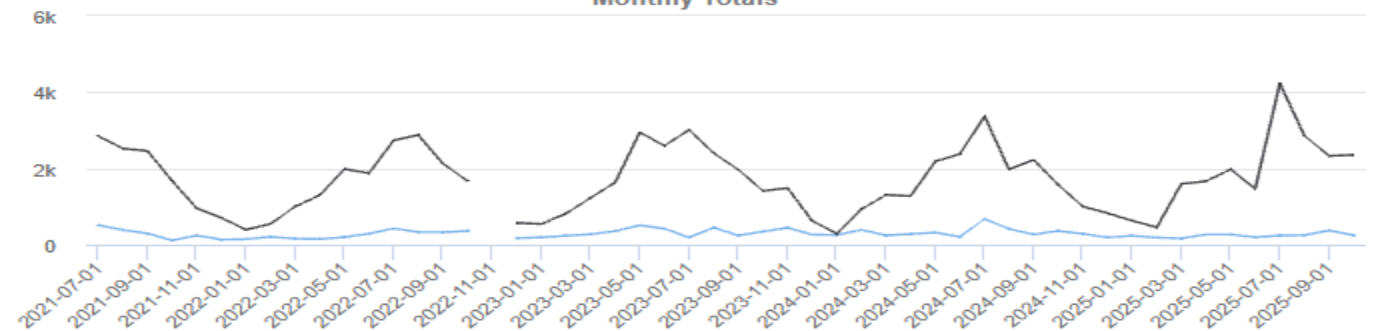
Daily Totals



Weekly Totals\*



Monthly Totals\*



■ Arlington Place Oelwein ■ Platt Park Oelwein

## Master Summary

Download as Excel CSV

| Year | Site                    | Jan | Feb | Mar   | Apr   | May   | Jun   | Jul    | Aug   | Sep   | Oct    | Nov   | Dec  | ADT†   | ADT†x365 | Days with data |
|------|-------------------------|-----|-----|-------|-------|-------|-------|--------|-------|-------|--------|-------|------|--------|----------|----------------|
| 2021 | Arlington Place Oelwein |     |     |       |       |       |       | 512*   | 388   | 294   | 115    | 242   | 134  | 9.115  | 3,327    | 183            |
|      | Platt Park Oelwein      |     |     |       |       |       |       | 2,845* | 2,523 | 2,458 | 1,675  | 950   | 704  | 60.454 | 22,066   | 183            |
| 2022 | Arlington Place Oelwein | 146 | 207 | 158   | 148   | 199   | 290   | 426    | 332   | 327   | 362    |       | 173* | 8.303  | 3,031    | 330            |
|      | Platt Park Oelwein      | 394 | 548 | 1,002 | 1,297 | 1,984 | 1,877 | 2,736  | 2,877 | 2,127 | 1,672  |       | 572* | 51.497 | 18,796   | 330            |
| 2023 | Arlington Place Oelwein | 193 | 235 | 274   | 356   | 510   | 421   | 190    | 451   | 241   | 347    | 441   | 266  | 10.753 | 3,925    | 365            |
|      | Platt Park Oelwein      | 543 | 816 | 1,229 | 1,635 | 2,948 | 2,592 | 3,013  | 2,399 | 1,969 | 1,411  | 1,485 | 628  | 56.625 | 20,668   | 365            |
| 2024 | Arlington Place Oelwein | 254 | 389 | 247   | 279   | 319   | 208   | 673    | 414   | 269   | 360    | 287   | 191  | 10.628 | 3,890    | 366            |
|      | Platt Park Oelwein      | 287 | 930 | 1,305 | 1,276 | 2,181 | 2,378 | 3,373  | 1,972 | 2,223 | 1,571  | 998   | 828  | 52.792 | 19,322   | 366            |
| 2025 | Arlington Place Oelwein | 236 | 186 | 165   | 268   | 268   | 196   | 240    | 249   | 374   | 248*   |       |      | 7.993  | 2,917    | 274            |
|      | Platt Park Oelwein      | 631 | 453 | 1,595 | 1,663 | 1,978 | 1,465 | 4,229  | 2,859 | 2,327 | 2,356* |       |      | 63.051 | 23,014   | 274            |

ADT† = Average Daily Traffic

\* = based upon that month's ADT [Learn more](#) Indicates months with less than 6 days of data.

[www.oelweinparks.org](http://www.oelweinparks.org)





## DAILY ACTIVITIES

- CLEAN/ORGANIZE SHOP AREAS
- PICK UP DOWNTOWN AREAS
- MAINTAINING PARK, CEMETERIES
- MAINTENANCE OF EQUIPMENT
- SAFETY MEETINGS
- MEET WITH CONTRACTORS
- RETRIEVE & UPLOAD TRAIL COUNT DATA
- WOODLAWN BURIALS
- PARK MAINTENANCE
- GRANT WORK

## PROGRESS ON PROJECTS

- WEBSITE UPDATING
- TRAIL EASEMENTS/GRANTS
- PARK AND REC MASTER PLAN
- TRAIL MAINTENANCE
- GRINDING STUMPS
- CIVICREC WORK
- TRAIL SEGMENT 2 ONGOING
- TREE TRIMMING
- EQUIPMENT MAINTENANCE
- SEASONAL EMPLOYEE WORK
- COMPLEX DRINKING FOUNTAIN
- UPPER EXPLORERLAND MEETINGS

## NEXT MONTH AND FUTURE PROJECTS

- REPURPOSE OLD WINGS BRIDGE
- GRANT WRITING
- TRAIL SEGMENTS 4/5 ALIGNMENT
- BOARD AND COMMITTEE MEETINGS
- WINTERIZING
- TREE REMOVAL

## 2025 PROJECTS COMPLETED

- ALL ASPHALT TRAILS CRACK FILLED AND SEALED
- PARK AND CEMETERY ROADS SEAL COATED
- RAGBRAI OVERNIGHT STAY
- STARTING GAZEBO FUNDRAISER
- CIVICREC FULL IMPLEMENTATION
- CITY PARK SOUTH ENTRANCE CULVERT REPLACED
- STARTED (50) CHESTNUT TREES
- SHOP WINDOWS REPLACED
- BCHC FREE DAY AT POOL, LATE NIGHT SWIM, VARIOUS OTHER EVENTS
- RAISED OVER \$16,000 THROUGH RAGBRAI EVENT AT POOL
- POOL TIKI HUT REFURBISHED
- UNITED WAY DAY OF CARING – SEVERAL PROJECTS
- YELLOW SAFETY DIAMOND TOPPER – DIAMOND 2 - \$550 RAISED
- CONCESSION WALL INSTALLATION / IMPROVEMENTS
- STORM DAMAGE CLEAN UP PLATT AND CITY PARK
- MAP CREATED BY NE IOWA RC&D FOR CAMPGROUND
- ELECTRICAL PEDESTALS REPLACED AT CAMPGROUND
- ARBOR DAY – PLANTING PRESENTATION / TREE WHIP GIVEAWAY-3<sup>RD</sup> GRADERS
- TRAIL SEGMENT 2 – STARTED 9-15-2025
  - \$100,000 REAP GRANT, \$82K PRIVATE DONATION, FOUNDATION
- DRINKING FOUNTAIN INSTALL
  - DELTA DENTAL \$6,814.99
- TREE PLANTINGS
  - TREES FOR KIDS \$2,500 – IOWA DNR
  - TREES FOREVER \$5,000 – FEATURED COMMUNITY
- BALL DIAMOND IMPROVEMENTS – FOUNDATION \$17,000
- CEMETERY FOUNDATIONS AND BEAN BAG GAME PADS POURED
- PRIVATE TREE DONATION - \$500





## WOODLAWN BURIALS

- 16 CREMATIONS
- 24 FULL BURIALS
- 1 INFANT DISINTERMENT

## SHELTER RESERVATIONS

- 50

JOSHUA JOHNSON MA  
OELWEIN PARK SUPERINTENDENT







# OCTOBER 2025 PARK MONTHLY REPORT

## TREE BOARD UPDATE:

TREES FOR KIDS GRANT -\$2,500

OCTOBER 1ST

PARKS / CEMETERY / TRAILS / AQUATICS / CAMPGROUND







TREES FOREVER GRANT - \$5,000

OCTOBER 15TH











### PARK / CEMETERY UPDATE:



















**Oelwein Daily Register**

October 10 at 8:09 AM · ⚙️



Athletes, trail walkers and their four-legged counterparts will enjoy outdoor activities more with the new addition of a water fountain recently installed at Veterans Sports Complex.



COMMUNITYNEWSPAPERGROUP.COM

### Veterans Sports Complex gets new fountain thanks to grant

Athletes, trail walkers and their four-legged counterparts will enjoy outdoor activities more wit...

👍❤️👉 28

3 shares

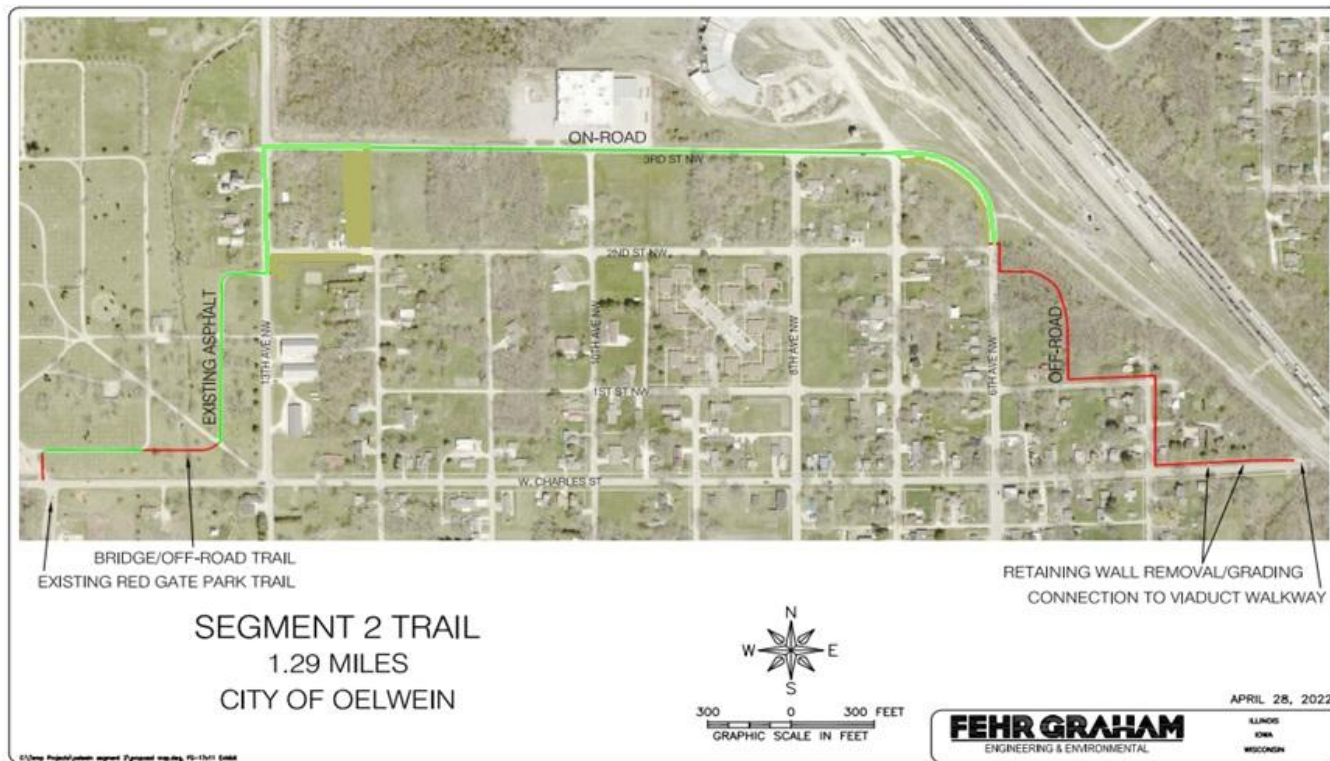


Comment as City of Oelwein





## TRAILS UPDATE:



## FUNDING:

|                     |                     |
|---------------------|---------------------|
| • PRIVATE DONATIONS | \$83,737.18         |
| • REAP GRANT        | \$100,000           |
| • FOUNDATION        | <u>\$246,006.47</u> |
| PROJECT BID         | \$429,743.65        |

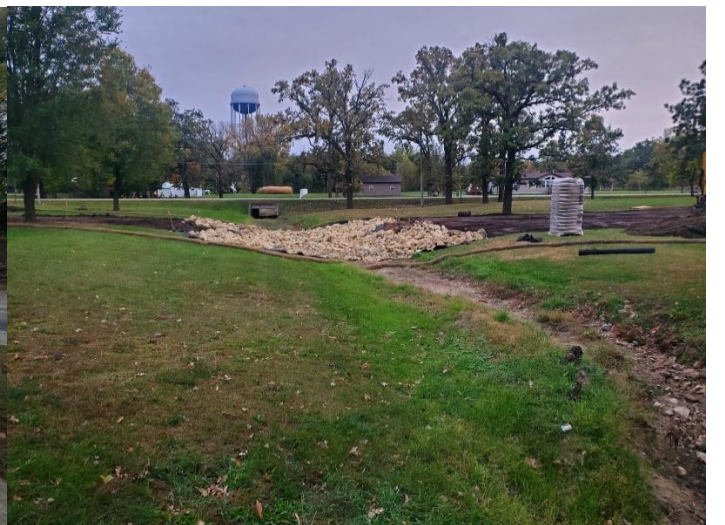




SEGMENT 2













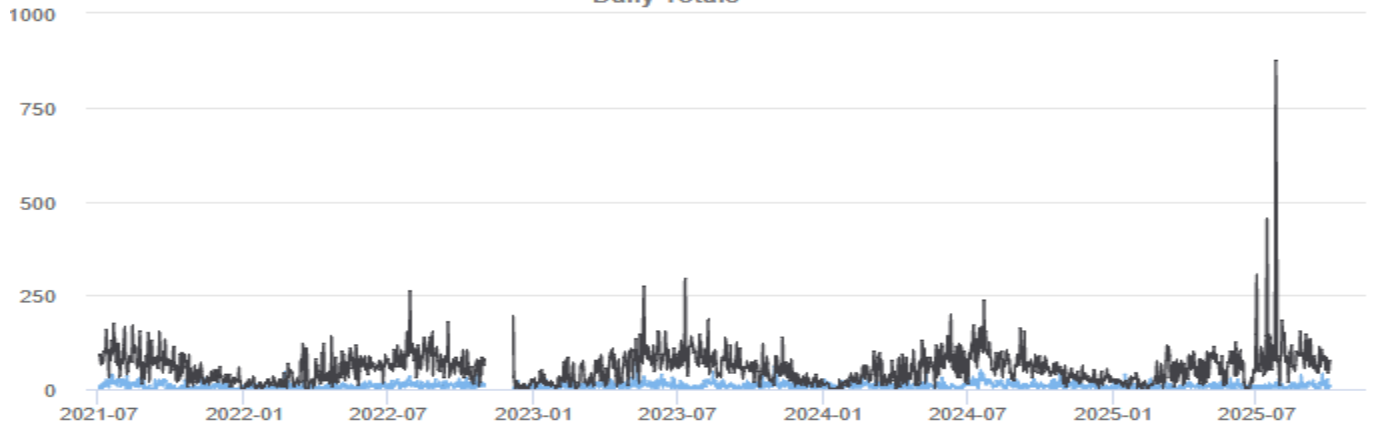


## Daily/Weekly/Monthly totals

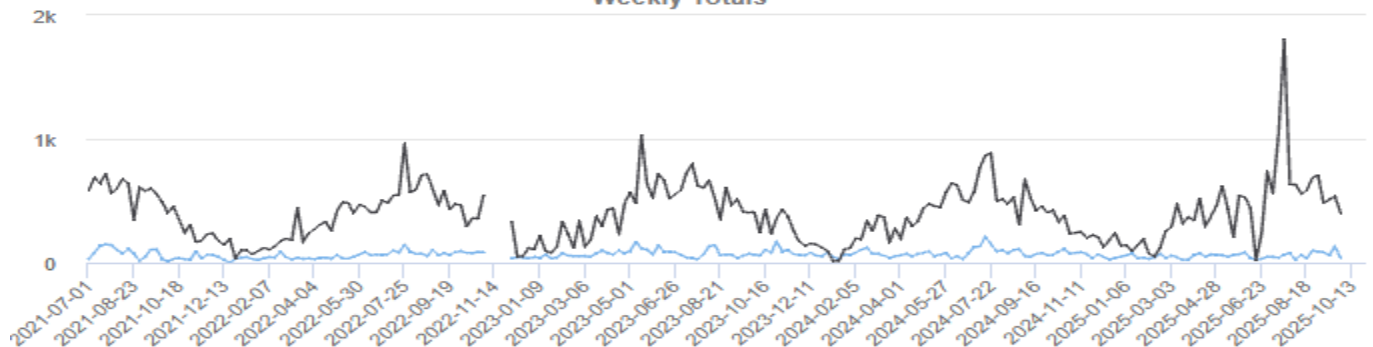
2021-07-01 to 2025-10-31 (1584 days)



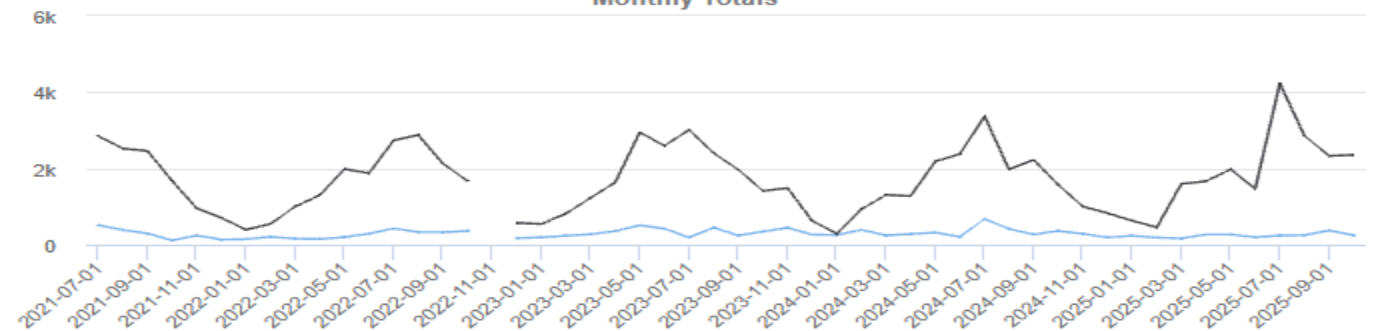
Daily Totals



Weekly Totals\*



Monthly Totals\*



■ Arlington Place Oelwein ■ Platt Park Oelwein

## Master Summary

Download as Excel CSV

| Year | Site                    | Jan | Feb | Mar   | Apr   | May   | Jun   | Jul    | Aug   | Sep   | Oct    | Nov   | Dec  | ADT†   | ADT†x365 | Days with data |
|------|-------------------------|-----|-----|-------|-------|-------|-------|--------|-------|-------|--------|-------|------|--------|----------|----------------|
| 2021 | Arlington Place Oelwein |     |     |       |       |       |       | 512*   | 388   | 294   | 115    | 242   | 134  | 9.115  | 3,327    | 183            |
|      | Platt Park Oelwein      |     |     |       |       |       |       | 2,845* | 2,523 | 2,458 | 1,675  | 950   | 704  | 60.454 | 22,066   | 183            |
| 2022 | Arlington Place Oelwein | 146 | 207 | 158   | 148   | 199   | 290   | 426    | 332   | 327   | 362    |       | 173* | 8.303  | 3,031    | 330            |
|      | Platt Park Oelwein      | 394 | 548 | 1,002 | 1,297 | 1,984 | 1,877 | 2,736  | 2,877 | 2,127 | 1,672  |       | 572* | 51.497 | 18,796   | 330            |
| 2023 | Arlington Place Oelwein | 193 | 235 | 274   | 356   | 510   | 421   | 190    | 451   | 241   | 347    | 441   | 266  | 10.753 | 3,925    | 365            |
|      | Platt Park Oelwein      | 543 | 816 | 1,229 | 1,635 | 2,948 | 2,592 | 3,013  | 2,399 | 1,969 | 1,411  | 1,485 | 628  | 56.625 | 20,668   | 365            |
| 2024 | Arlington Place Oelwein | 254 | 389 | 247   | 279   | 319   | 208   | 673    | 414   | 269   | 360    | 287   | 191  | 10.628 | 3,890    | 366            |
|      | Platt Park Oelwein      | 287 | 930 | 1,305 | 1,276 | 2,181 | 2,378 | 3,373  | 1,972 | 2,223 | 1,571  | 998   | 828  | 52.792 | 19,322   | 366            |
| 2025 | Arlington Place Oelwein | 236 | 186 | 165   | 268   | 268   | 196   | 240    | 249   | 374   | 248*   |       |      | 7.993  | 2,917    | 274            |
|      | Platt Park Oelwein      | 631 | 453 | 1,595 | 1,663 | 1,978 | 1,465 | 4,229  | 2,859 | 2,327 | 2,356* |       |      | 63.051 | 23,014   | 274            |

ADT† = Average Daily Traffic

\* = based upon that month's ADT [Learn more](#) Indicates months with less than 6 days of data.

[www.oelweinparks.org](http://www.oelweinparks.org)





## DAILY ACTIVITIES

- CLEAN/ORGANIZE SHOP AREAS
- PICK UP DOWNTOWN AREAS
- MAINTAINING PARK, CEMETERIES
- MAINTENANCE OF EQUIPMENT
- SAFETY MEETINGS
- MEET WITH CONTRACTORS
- RETRIEVE & UPLOAD TRAIL COUNT DATA
- WOODLAWN BURIALS
- PARK MAINTENANCE
- GRANT WORK

## PROGRESS ON PROJECTS

- WEBSITE UPDATING
- TRAIL EASEMENTS/GRANTS
- PARK AND REC MASTER PLAN
- TRAIL MAINTENANCE
- GRINDING STUMPS
- CIVICREC WORK
- TRAIL SEGMENT 2 ONGOING
- TREE TRIMMING
- EQUIPMENT MAINTENANCE
- SEASONAL EMPLOYEE WORK
- COMPLEX DRINKING FOUNTAIN
- UPPER EXPLORERLAND MEETINGS

## NEXT MONTH AND FUTURE PROJECTS

- REPURPOSE OLD WINGS BRIDGE
- GRANT WRITING
- TRAIL SEGMENTS 4/5 ALIGNMENT
- BOARD AND COMMITTEE MEETINGS
- WINTERIZING
- TREE REMOVAL

## 2025 PROJECTS COMPLETED

- ALL ASPHALT TRAILS CRACK FILLED AND SEALED
- PARK AND CEMETERY ROADS SEAL COATED
- RAGBRAI OVERNIGHT STAY
- STARTING GAZEBO FUNDRAISER
- CIVICREC FULL IMPLEMENTATION
- CITY PARK SOUTH ENTRANCE CULVERT REPLACED
- STARTED (50) CHESTNUT TREES
- SHOP WINDOWS REPLACED
- BCHC FREE DAY AT POOL, LATE NIGHT SWIM, VARIOUS OTHER EVENTS
- RAISED OVER \$16,000 THROUGH RAGBRAI EVENT AT POOL
- POOL TIKI HUT REFURBISHED
- UNITED WAY DAY OF CARING – SEVERAL PROJECTS
- YELLOW SAFETY DIAMOND TOPPER – DIAMOND 2 - \$550 RAISED
- CONCESSION WALL INSTALLATION / IMPROVEMENTS
- STORM DAMAGE CLEAN UP PLATT AND CITY PARK
- MAP CREATED BY NE IOWA RC&D FOR CAMPGROUND
- ELECTRICAL PEDESTALS REPLACED AT CAMPGROUND
- ARBOR DAY – PLANTING PRESENTATION / TREE WHIP GIVEAWAY-3<sup>RD</sup> GRADERS
- TRAIL SEGMENT 2 – STARTED 9-15-2025
  - \$100,000 REAP GRANT, \$82K PRIVATE DONATION, FOUNDATION
- DRINKING FOUNTAIN INSTALL
  - DELTA DENTAL \$6,814.99
- TREE PLANTINGS
  - TREES FOR KIDS \$2,500 – IOWA DNR
  - TREES FOREVER \$5,000 – FEATURED COMMUNITY
- BALL DIAMOND IMPROVEMENTS – FOUNDATION \$17,000
- CEMETERY FOUNDATIONS AND BEAN BAG GAME PADS POURED
- PRIVATE TREE DONATION - \$500





## WOODLAWN BURIALS

- 16 CREMATIONS
- 24 FULL BURIALS
- 1 INFANT DISINTERMENT

## SHELTER RESERVATIONS

- 50

JOSHUA JOHNSON MA  
OELWEIN PARK SUPERINTENDENT

