



# CITY OF NORMAN, OK CITY COUNCIL STUDY SESSION

Municipal Building, Executive Conference Room, 201 West Gray, Norman,  
OK 73069

Tuesday, August 29, 2023 at 5:30 PM

---

## AGENDA

### Virtual meeting of the City Council, Norman Utilities Authority, Norman Municipal Authority, And Norman Tax Increment Finance Authority

*It is the policy of the City of Norman that no person or groups of persons shall on the grounds of race, color, religion, ancestry, national origin, age, place of birth, sex, sexual orientation, gender identity or expression, familial status, marital status, including marriage to a person of the same sex, disability, retaliation, or genetic information, be excluded from participation in, be denied the benefits of, or otherwise subjected to discrimination in employment activities or in all programs, services, or activities administered by the City, its recipients, sub-recipients, and contractors. In the event of any comments, complaints, modifications, accommodations, alternative formats, and auxiliary aids and services regarding accessibility or inclusion, please contact the ADA Technician at 405-366-5424, Relay Service: 711. To better serve you, five (5) business days' advance notice is preferred.*

### CALL TO ORDER

### AGENDA ITEMS

1. UPDATE FROM THE NORMAN POLICE DEPARTMENT REGARDING ACTIVITY AND STATISTICS.
2. DISCUSSION REGARDING AN AVIGATION EASEMENT AT WESTWOOD PARK FOR THE MAX WESTHEIMER AIRPORT.

### ADJOURNMENT

# NORMAN POLICE DEPARTMENT

## CRIME DATA PRESENTATION

### AUGUST 2023



## OFFENSE DATA COMES FROM MULTIPLE SOURCES.

 **CALLS FOR SERVICE**

 **OFFENSE REPORTS**

 **COLLISIONS**

ANNUALLY, A COMPILATION OF THIS DATA IS REPORTED TO THE OKLAHOMA STATE BUREAU OF INVESTIGATION (OSBI) AND THE FEDERAL BUREAU OF INVESTIGATION (FBI) FOLLOWING THE STANDARD OF NATIONAL INCIDENT-BASED REPORTING SYSTEM (NIBRS).



## CRIME DATA COLLECTION OVERVIEW

**FBI CRIME DATA EXPLORER**

**OSBI ANNUAL STATEWIDE  
CRIME REPORTING**

**BENCHMARK CITIES SURVEY**

**NPD DAILY ACTIVITY REPORTS**

**NPD WEEKLY + MONTHLY  
DEPARTMENT OVERVIEW  
REPORTS**

**NPD 5-YEAR CRIME DATA  
REPORTS**  
  
OFFENSES  
CALLS FOR SERVICE  
COLLISIONS

**NPD OPEN DATA PORTAL**

**WHERE CRIME DATA CAN BE FOUND**



# TOTAL NUMBER OF REPORTED OFFENSES IN NORMAN

 3%

**2023 YTD: 9,036**

**2022 YTD: 8,781**

**2021 YTD: 8,445**

DATA REFLECTS ALL REPORTED OFFENSES FROM JANUARY 1 THROUGH JULY 31, 2023.

## OVERALL CRIME DATA



## GROUP A - OVERALL REPORTED OFFENSES

↓ 3%

**2023 YTD: 4,609**

**2022 YTD: 4,761**

**2021 YTD: 4,809**

**AGGRAVATED ASSAULT:** UP 19% (185/156)

**KIDNAPPING:** UP 40% (14/10)

**FRAUD:** UP 8% (554/513)

**DRUG VIOLATIONS:** UP 27% (384/303)

**SEXUAL ASSAULT:** DOWN 8% (110/119)

**VANDALISM:** DOWN 14% (527/612)

**LARCENY/THEFT:** DOWN 17% (1420/1703)

**MOTOR VEHICLE THEFT:** DOWN 7% (225/243)

DATA REFLECTS ALL REPORTED OFFENSES FROM JANUARY 1 THROUGH JULY 31, 2023.

## GROUP A OFFENSE DATA

### GROUP A - CRIMES AGAINST PERSONS Item 1.

↑ 11%

2023 YTD: 1,033 / 2022 YTD: 927

### GROUP A - CRIMES AGAINST PROPERTY

↓ 9%

2023 YTD: 3,179 / 2022 YTD: 3,440

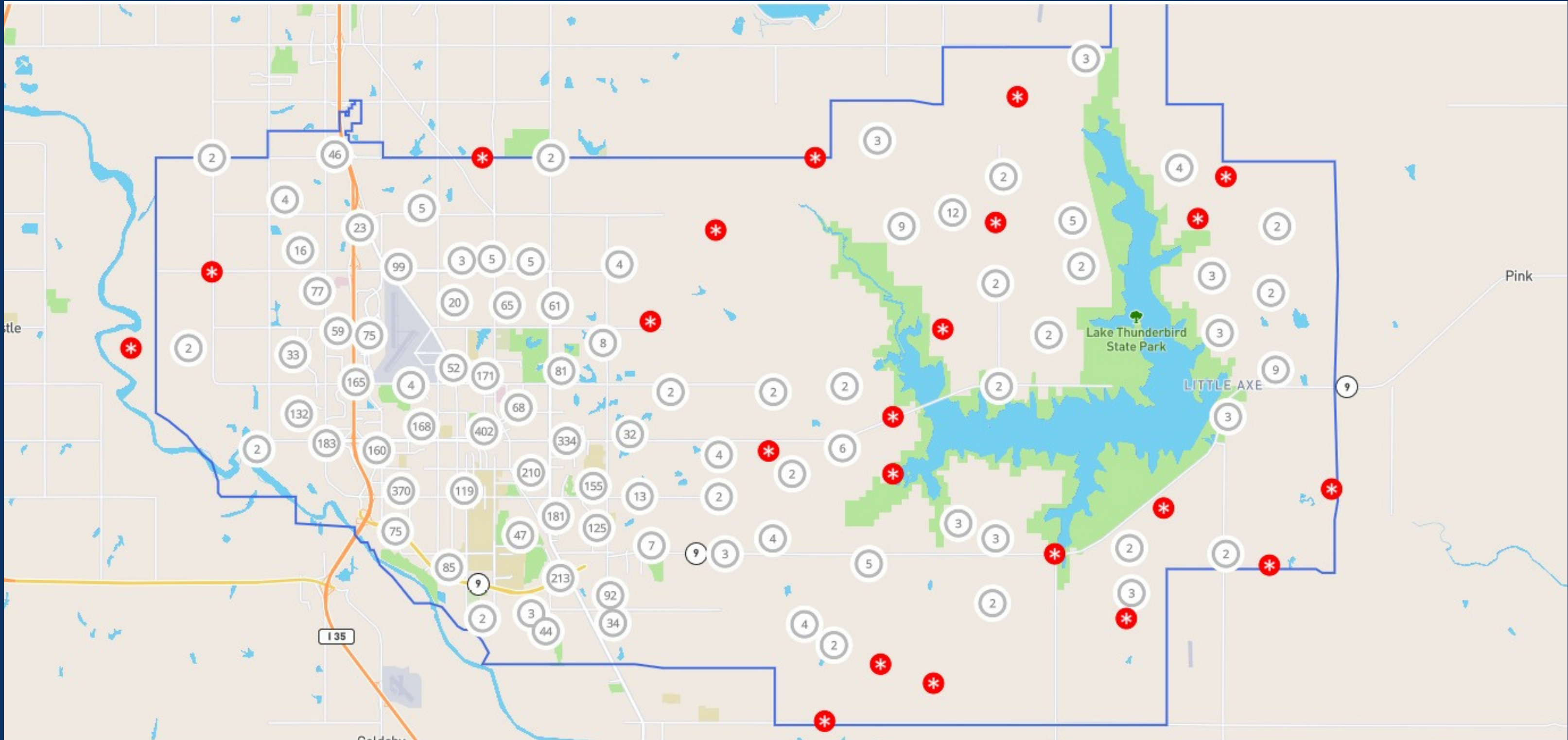
### GROUP A - CRIMES AGAINST SOCIETY

↑ 16%

2023 YTD: 457 / 2022 YTD: 394







DATA REFLECTS ALL REPORTED OFFENSES FROM JANUARY 1 THROUGH JULY 31, 2023.

# GROUP A OFFENSE DATA MAP



# GROUP B - OVERALL REPORTED OFFENSES

↗ 22%

2023 YTD: 2,070  
2022 YTD: 1,700  
2021 YTD: 1,440

DUI: UP 27% (246/194)  
PUBLIC INTOXICATION: UP 9% (314/287)  
RUNAWAY: UP 71% (247/144)

DATA REFLECTS ALL REPORTED OFFENSES FROM JANUARY 1 THROUGH JULY 31, 2023.

## GROUP B OFFENSE DATA





# OVERALL REPORTED COLLISIONS



2023 YTD: 1,199  
2022 YTD: 1,147  
2021 YTD: 1,071

PERSONS INJURED BY SEVERITY	2021 YTD	2022 YTD	2023 YTD
PERSONS WITH NO OR UNKNOWN INJURIES	2,340	2,534	2,651
PERSONS WITH SERIOUS OR MINOR INJURIES	535	482	560
PERSONS FATALLY INJURED	1	9	5
TOTAL PERSONS INJURED	536	591	565

# COLLISION DATA

## NON-INJURY COLLISIONS



2023 YTD: 810 / 2022 YTD: 784

## INJURY COLLISIONS



2023 YTD: 384 / 2022 YTD: 354

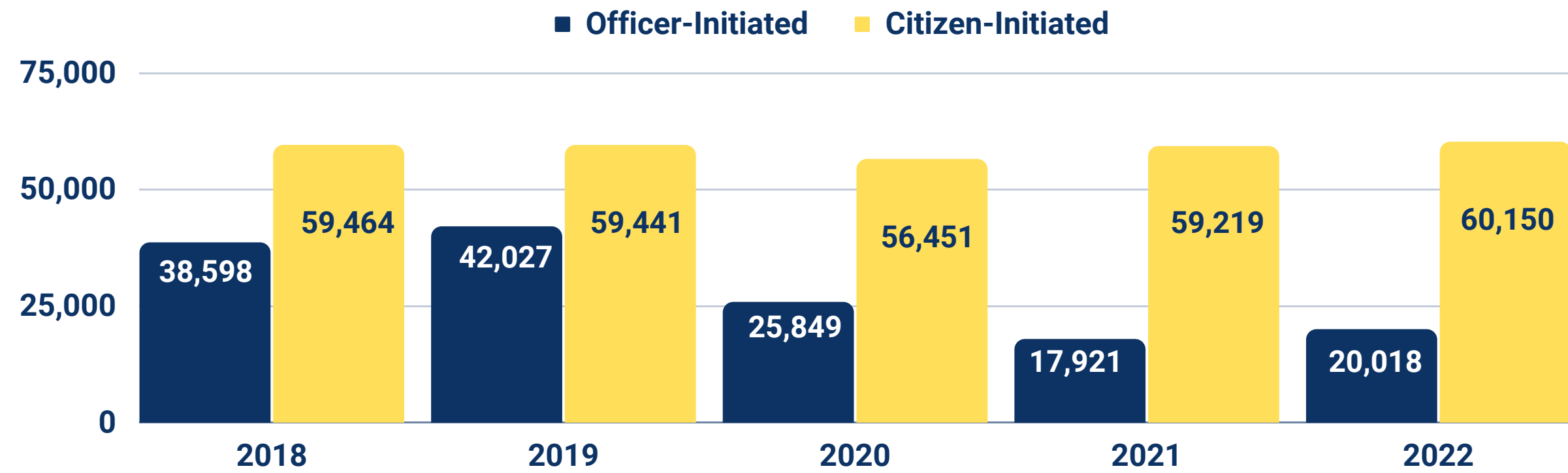
## FATAL COLLISIONS



2023 YTD: 5 / 2022 YTD: 9

DATA REFLECTS ALL REPORTED OFFENSES FROM  
JANUARY 1 THROUGH JULY 31, 2023.





# TOTAL NUMBER OF CALLS FOR SERVICE

## CALLS FOR SERVICE - 2023 YTD

 **7%**

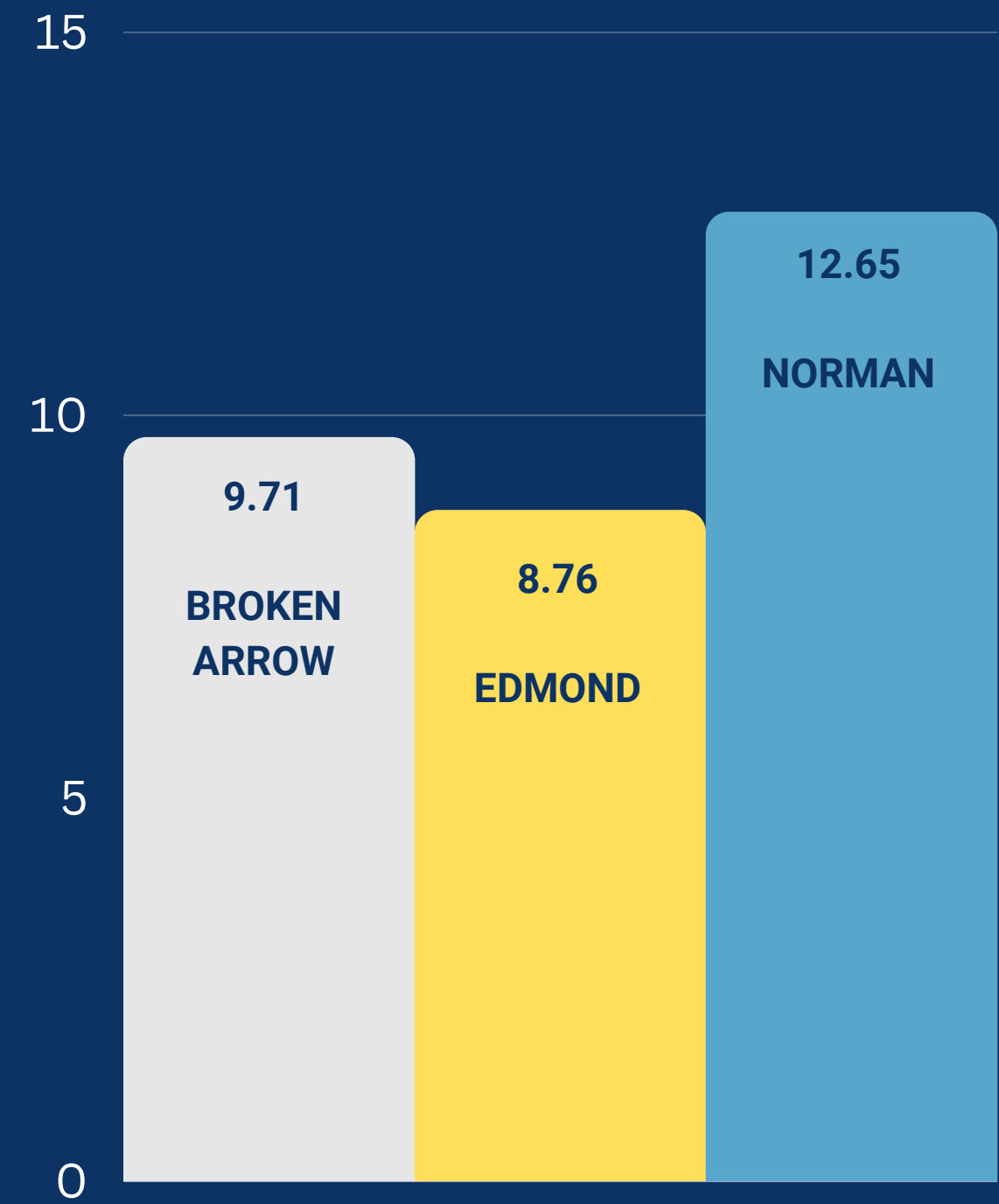
**2023 YTD: 50,311**  
**2022 YTD: 46,937**  
**2021 YTD: 44,719**

DATA REFLECTS ALL REPORTED OFFENSES FROM JANUARY 1 THROUGH JULY 31, 2023.

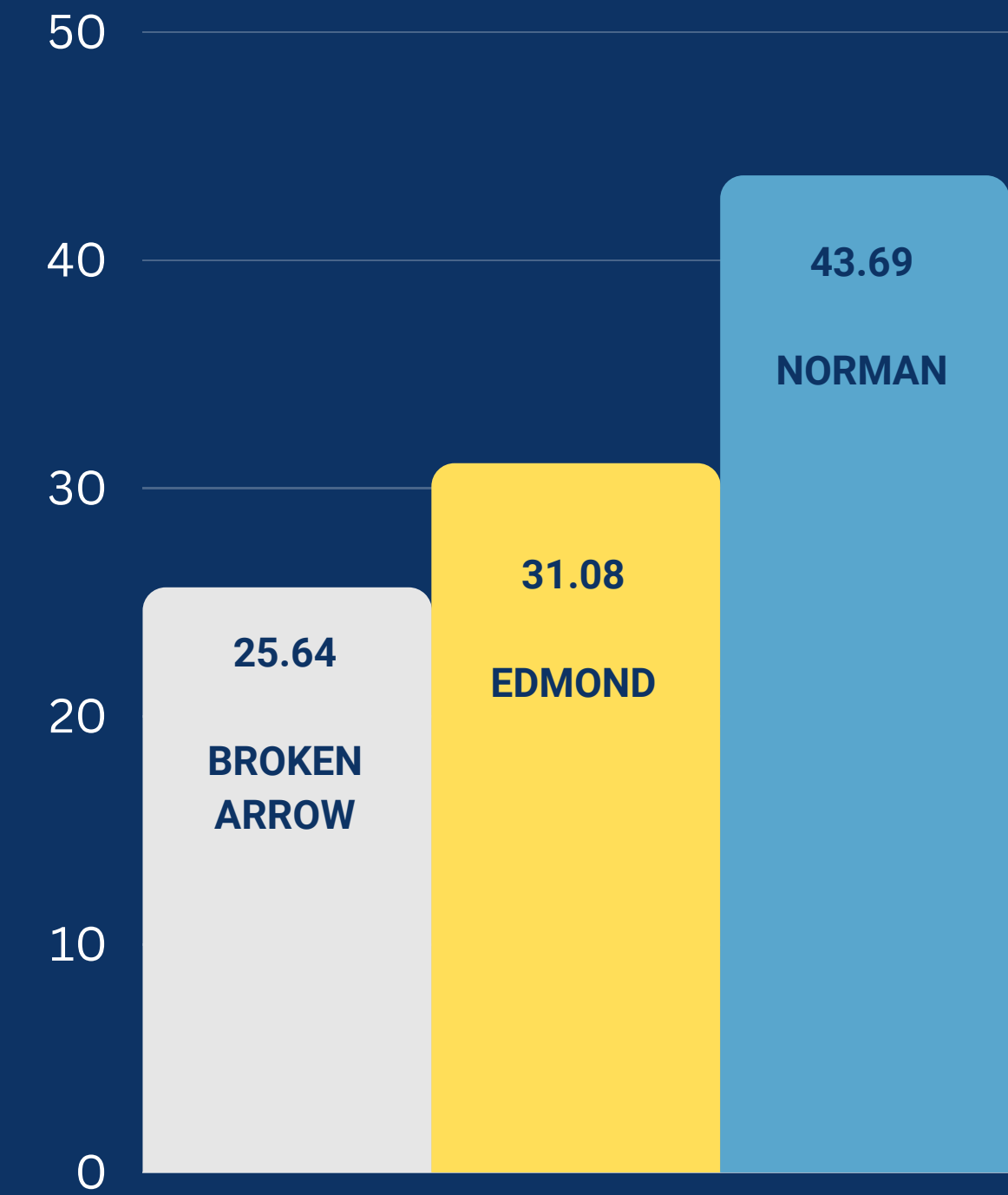
# CALL FOR SERVICE DATA



# RATE OF PERSONS CRIMES PER 1000 CITIZENS



# RATE OF PROPERTY CRIMES PER 1000 CITIZENS



# BENCHMARK CITY COMPARISONS



**BROKEN ARROW**

**POPULATION**

2022: 117,947

2021: 112,458

**PERCENTAGE OF CHANGE**

5% INCREASE

**AUTHORIZED SWORN OFFICERS**

161

**SIZE OF JURISDICTION**

63 SQUARE MILES

**EDMOND**

**POPULATION**

2022: 95,341

2021: 94,423

**PERCENTAGE OF CHANGE**

1% INCREASE

**AUTHORIZED SWORN OFFICERS**

126

**SIZE OF JURISDICTION**

88 SQUARE MILES

**NORMAN**

**POPULATION**

2022: 131,896

2021: 128,026

**PERCENTAGE OF CHANGE**

3% INCREASE

**AUTHORIZED SWORN OFFICERS**

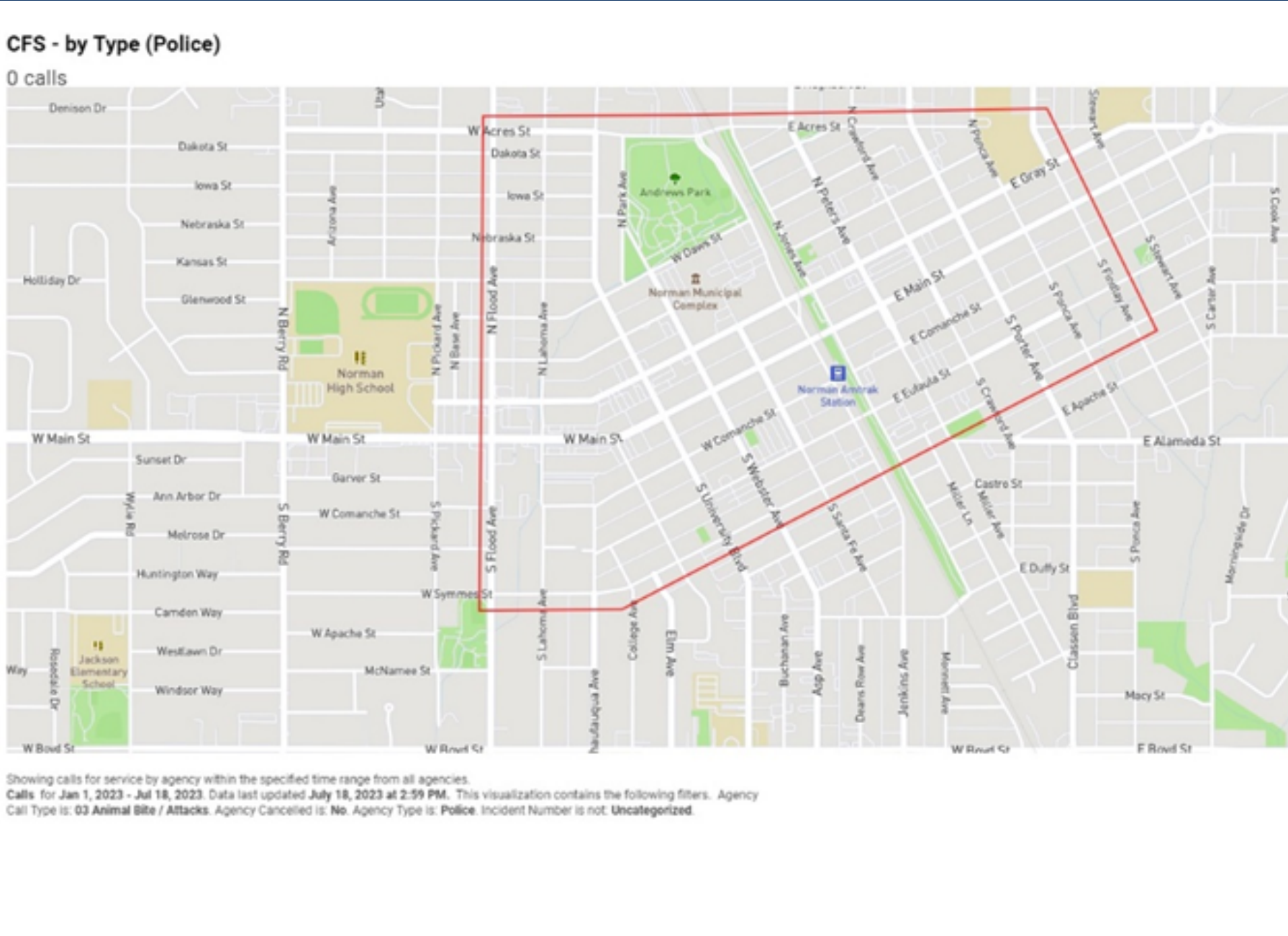
180

**SIZE OF JURISDICTION**

190 SQUARE MILES

# BENCHMARK CITIES COMPARISONS





# TOTAL CALLS FOR SERVICE

9%

2023 YTD: 3,721  
2022 YTD: 3,411  
2021 YTD: 2,644

# TOTAL OFFENSES REPORTED

17%

2023 YTD: 562  
2022 YTD: 479  
2021 YTD: 338

DATA REFLECTS ALL REPORTED OFFENSES FROM JANUARY 1 THROUGH JULY 31, 2023.

# DOWNTOWN NORMAN CRIME DATA



# TOTAL NUMBER OF CALLS FOR SERVICE INVOLVING AN UNHOUSED INDIVIDUAL 2023 YTD

## 2,736

### MOST FREQUENT CALLS TYPES:

1. TRESPASSING (24%)
2. WELFARE CHECK (19%)
3. DISTURBANCE (15%)

DATA REFLECTS ALL REPORTED OFFENSES FROM JANUARY 1 THROUGH JULY 31, 2023.

## DATA RELATING TO UNHOUSED PERSONS





CALL FOR SERVICE - POLICE ONLY

FACILITY	ADDRESS	2021	2022	2023 (YTD)
SALVATION ARMY	318 E HAYES	145	168	111*
FOOD & SHELTER	201 REED	340	533	337*
A FRIENDS PLACE	109 W GRAY	2**	23**	99*

MOST COMMON CALL TYPES: SUSPICIOUS, WELFARE CHECK, DISTURBANCE, ASSAULT, AND FIGHTS

\* 2023 DATA REFLECTS YEAR TO DATE (AUGUST 10, 2023)

\*\* FACILITY WAS ONLY OPEN NOVEMBER & DECEMBER

DATA RELATING TO UNHOUSED PERSONS



# NPD CASE REPORTS

FACILITY	ADDRESS	2021	2022	2023 (YTD)
SALVATION ARMY	318 E HAYES	23	36	23*
FOOD & SHELTER	201 REED	76	147	85*
A FRIENDS PLACE	109 W GRAY	0**	8**	29*

**MOST COMMON OFFENSE TYPES: DRUG VIOLATION, WARRANT SERVICE, PUBLIC INTOXICATION, ASSAULT, THEFT, AND ROBBERY**

\* 2023 DATA REFLECTS YEAR TO DATE (AUGUST 10, 2023)

\*\* FACILITY WAS ONLY OPEN NOVEMBER & DECEMBER

# DATA RELATING TO UNHOUSED PERSONS



# NPD ARRESTS

FACILITY	ADDRESS	2021	2022	2023 (YTD)
SALVATION ARMY	318 E HAYES	14	27	15*
FOOD & SHELTER	201 REED	55	130	70*
A FRIENDS PLACE	109 W GRAY	0**	7**	20*

**MOST COMMON ARREST TYPES: DRUG VIOLATION, WARRANT SERVICE, PUBLIC INTOXICATION, ASSAULT, AND THEFT**

\* 2023 DATA REFLECTS YEAR TO DATE (AUGUST 10, 2023)

\*\* FACILITY WAS ONLY OPEN NOVEMBER & DECEMBER

# DATA RELATING TO UNHOUSED PERSONS



## CURRENT ACTION UNDERWAY:



STAFFING LEVELS REBOUND AND REALLOCATION



INVESTIGATIONS USE OF WRAP AROUND SERVICES



UTILIZATION OF COMMUNITY OUTREACH + PARTNERSHIPS



INCREASED FOCUS ON STRATEGIC PROACTIVE ENFORCEMENT EFFORTS

# LOOKING FORWARD





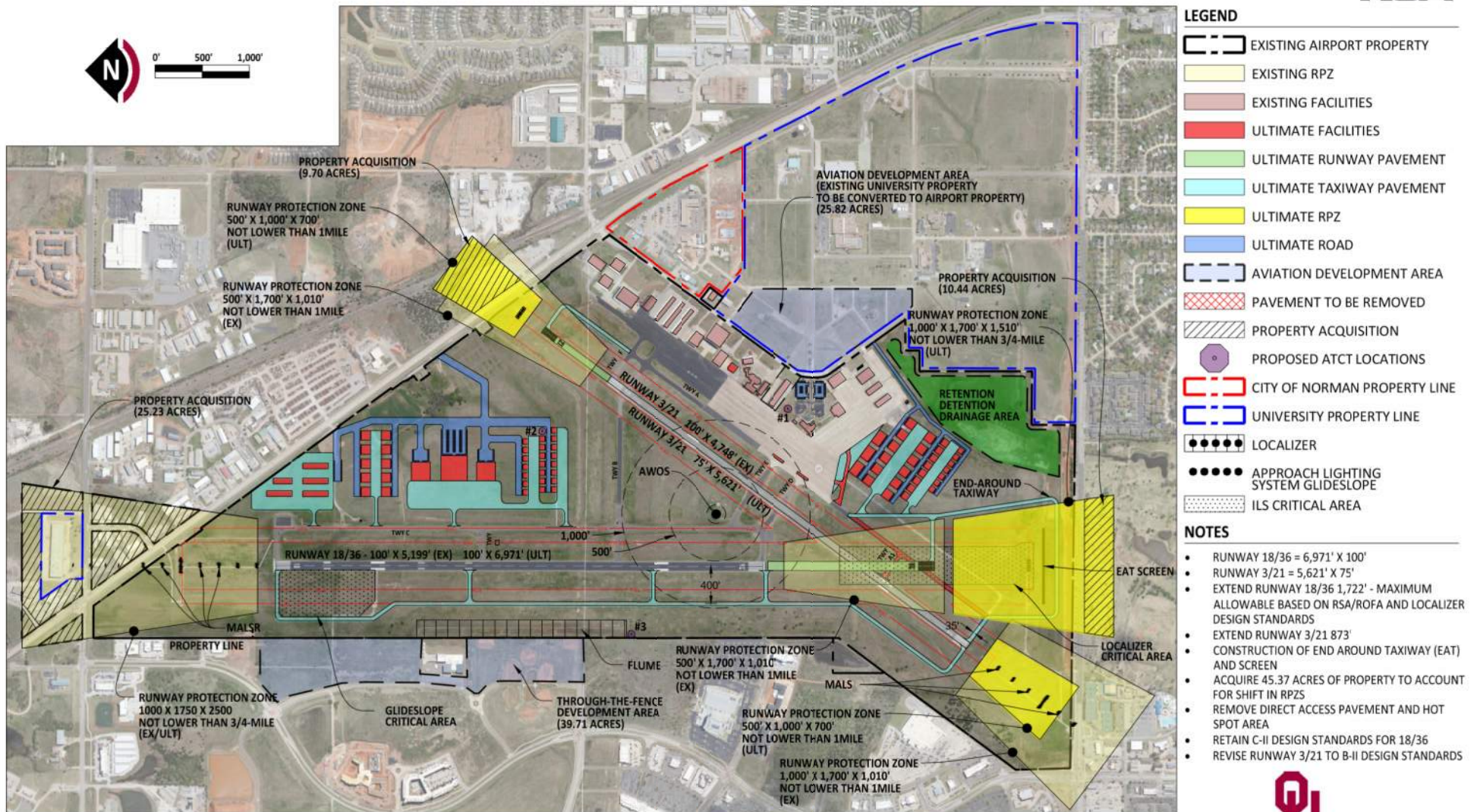


EXHIBIT 2 RECOMMENDED DEVELOPMENT PLAN

**MAX WESTHEIMER AIRPORT**  
The UNIVERSITY of OKLAHOMA