

City Manager
Glenn Steckman

Port Director
Joy Baker

Harbormaster
Lucas Stotts



Nome Port Commission
Jim West, Jr., Chairman
Charlie Lean, Vice Chairman
Derek McLarty
Shane Smithhisler
Scot Henderson
Russell Rowe
Gay Sheffield

102 Division St. • P.O. Box 281
Nome, Alaska 99762
(907) 443-6619
Fax (907) 443-5473

**NOME PORT COMMISSION
WORK SESSION & REGULAR MEETING AGENDA
THURSDAY, SEPTEMBER 17, 2020 @ 5:30/6:30 PM
COUNCIL CHAMBERS IN CITY HALL**

WORK SESSION – 5:30PM:

REVIEW AND REPRIORITIZATION OF PHASED LANDSIDE DEVELOPMENT

REGULAR MEETING – 6:30PM:

- I. ROLL CALL**
- II. APPROVAL OF AGENDA**
- III. APPROVAL OF MINUTES**
 - 20-08-20 Regular Meeting
- IV. CITIZEN’S COMMENTS**
- V. COMMUNICATIONS**
 - 20-07-08 USACE Nome SBH West Beach Dredging (Draft Figures)
 - 20-08-28 US investigates interactions after Russia confronts trawler in Bering Sea
 - 20-09-11 PON F20 Commodity Volumes Update (Draft)
 - 20-09-12 PON F20 Revenue/Expense Update (Draft)
- VI. COMMISSIONER UPDATES**
- VII. HARBORMASTER REPORT**
 - Harbormaster Report – Operations & Maintenance Update
- VIII. PORT DIRECTOR REPORT/PROJECTS UPDATE**
 - 2020-09-11 Port Director/Projects Status Report
 - Corps CAP 107 Harbor Study Update
 - Nome Anode Replacement Project Drawings & Bidding Schedule
- IX. OLD BUSINESS**
 - Landside Property Development – Prioritize Short & Long Term Actions
- X. NEW BUSINESS**
 - Rebuild and/or Replacement of 6” Block Valve at Fuel Header
- XI. CITIZEN’S COMMENTS**
- XII. COMMISSIONER COMMENTS**
- XIII. NEXT REGULAR MEETING**
 - October 15th, 2020 - 5:30pm
- XIV. ADJOURNMENT**

SHORT & LONG TERM DEVELOPMENT

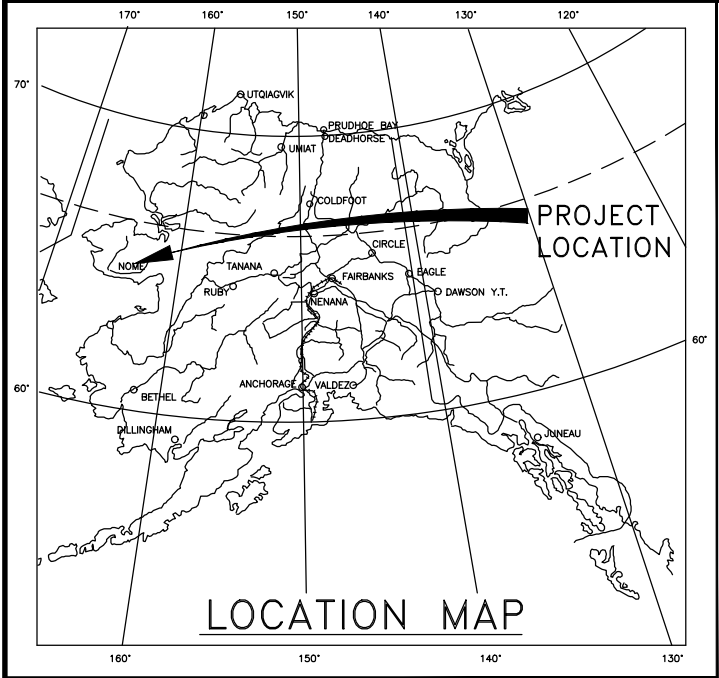
Port Staff recommendations based on 20 Aug 2020 Work Session discussion

Short Term:

- Distribution of dredge spoils stockpile (Snake River dredging 2017/18):
 - Fill permit application submitted to Corps (awaiting approval)
 - Arrange for survey to stake toe limits and determine lift thickness
 - City/Port personnel spread spoils as time and weather allows
- Relocation of Privately-owned Container Rows:
 - Release notices to property owners regarding spring relocation
 - Prep and layout old state trailer section of Thornbush (TBS) property
 - Define, plat and establish property access
 - Identify security camera and lighting needs/estimate costs
- Address TBS Pad Surface Settling:
 - Survey arranged to determine material quantity for cost estimation
 - Identify funding source and proceed to public bidding process
- Improve Submarine Beach (Postal Annex) Road up to TBS Pad
 - Expand width to increase safety
 - Stabilize shoulders for heavier/larger loads
 - Establish right-of-way for oncoming traffic
 - Investigate potential decrease of grade percent on incline
- Coordinate with Bonanza Fuel on filling adjacent areas along shared property line
 - Enables removal of drainage culvert and final gradation of pad surface
 - Define and plat realignment of temporary TBS access to existing Port Road
 - Investigate stabilization of adjacent pad shoulders

Long Term:

- **Realignment of Port Rd from Cswy to TBS pad**
 - Investigate, define and plat realignment corridor
 - Consider relocation of Alaska Marine Lines offices to west side of Port Road to allow for wider east shoulder
- **Determine most effective plan to fill tundra south of existing NJUS fuel tanks**
 - Consider insulating existing SW corner slopes with material/armor stone
 - Terrace this material to a lower pad surface for additional laydown property
- **Consider new areas for vessel haul out and/or laydown pad**
 - Consider beach area due south of cargo/ramp pad (west of channel entrance)
 - Armor perimeter - fill with dredge spoils and cap with surface material
 - Consider beach area south of LuLu beach (east of channel entrance)
- **Investigate and monitor property sales along Little Creek Rd for future development**
 - This is all tailings and thawed/settled ground – stable surface for building



STATE OF ALASKA
DEPARTMENT OF TRANSPORTATION
&
PUBLIC FACILITIES

PROPOSED HIGHWAY PROJECT
Z621230000 / 0002278
PORT ROAD RECONSTRUCTION
GRADING, DRAINAGE AND PAVING

NO.	DATE	REVISION	STATE	PROJECT DESIGNATION	YEAR	SHEET NO.	TOTAL SHEETS
			ALASKA	Z621230000 / 0002278	2020	A1	59
			CDS ROUTE: 168115		MILEPOINT: 0 TO 0.8818		

INDEX OF SHEETS	
SHEET NO.	DESCRIPTION
A1	TITLE SHEET
A2-A4	LEGEND, GENERAL NOTES, SURVEY CONTROL
B1-B2	TYPICAL SECTIONS
C1	ESTIMATE OF QUANTITIES
F1-F11	PLAN & PROFILE
G1-G11	GRADING SHEETS
H1-H10	SIGNING & STRIPING
Q1-Q6	EROSION SEDIMENT CONTROL PLANS
V1-V14	STANDARD DRAWINGS



DESIGN DESIGNATIONS	
ADT (2018)	1100
ADT (2045)	1400
DHV (%)	12.5%
PERCENT TRUCKS (T)	6.5%
DIRECTIONAL SPLIT (D)	40%/60%
DESIGN SPEED (V)	35 MPH
DESIGN EAL'S (2020 YEARS)	250,479

PROJECT SUMMARY	
WIDTH OF PAVEMENT	36-28 FT
LENGTH OF GRADING	2807 FT
LENGTH OF PAVING	2982 FT
LENGTH OF PROJECT	2807 FT

Joseph Kemp, P.E., PROJECT MANAGER

STATE OF ALASKA
DEPARTMENT OF TRANSPORTATION
&
PUBLIC FACILITIES

APPROVED BY: _____ DATE _____

Sarah E. Schacher, P.E.
Preconstruction Engineer, Northern Region
ACCEPTED FOR CONSTRUCTION:

Ryan F. Anderson, P.E.
Regional Director, Northern Region

**MINUTES
NOME PORT COMMISSION
REGULAR MEETING
August 20th, 2020**

The Regular Meeting of the Nome Port Commission was called to order at 7:02 pm by Chairman West in Council Chambers at City Hall, located at 102 Division Street.

ROLL CALL

Members Present: Smithhisler; Lean; West; Rowe (telephonically); Sheffield; McLarty

Absent: Henderson

Also Present: Lucas Stotts, Harbormaster; Glenn Steckman, City Manager; Joy Baker, Port Director

In the audience: Ken Hughes; James Mason; Ken Morton

APPROVAL OF AGENDA

Chairman West asked for a motion to approve the agenda:

Motion to approve made by Smithhisler, seconded by Lean.

At the Roll Call:

Ayes: Lean; West; Rowe; Sheffield; McLarty; Smithhisler

Nays:

Abstain:

The motion **CARRIED**.

APPROVAL OF MINUTES

June 18th, 2020 Motion made by Sheffield, seconded by Lean to approve minutes;
Regular Meeting

At the Roll Call

Ayes: West; Rowe; Sheffield; McLarty; Smithhisler; Lean

Nays:

Abstain:

The motion **CARRIED**.

CITIZENS' COMMENTS

None.

COMMUNICATIONS

- 20-06-09 Memo on Safeguarding U.S. National Interests in Arctic – White House
- 20-06-24 Senator Murkowski Statement for the Record re Mayor Beneville
- 20-06-24 Non-Credentialed Mariner Positive Drug Tests – USCG Safety Bulletin
- 20-07-15 Congressman Young Statement for the Record re WRDA 2020
- 20-07-15 Letter to Sector ANC Partners from CAPT MacKenzie (USCG)
- 20-07-28 Letter to Port Director from USACE re 2021-2023 Maintenance Dredging

Discussion:

PD Baker stated that the statement by Senator Murkowski on Mayor Beneville was very nicely done. HM Stotts commented that the memo on safeguarding U.S. National Interests in the Arctic was interesting and noted the mention of at least two different Arctic base locations to support large vessel activity.

COMMISSIONER'S UPDATES

None.

HARBORMASTER'S REPORT

HM Stotts commented the following;

- Overview of facility vessel traffic has been very busy with multiple companies exporting gravel which has kept the West Gold and Mid Docks very busy. There has been more material stockpiled on the Cswy this season than any other on record.
- USCG ALEX HALEY due into the City Dock on Thursday Sept 17th for a 4-day port call.
- SIKULIAQ and USCG due in mid-Nov, which shows missions extending later each season.
- The Lower IP (ramp pad) has been very busy transshipping cargo throughout the region, the congestion of which has been compounded by having several of the larger mining vessels still onshore. This shows that while uplands cargo laydown space is needed, we also need to plan for vessel haul-out / laydown area for additional and larger vessels.

Discussion:

Chairman West asked about the status of the Mid Dock repair from the DIANE H/KUMTUX allision earlier this season. HM Stotts commented that the repair was completed the previous week. The contractor use dye-penetrant to make sure the crack was terminated, ground out the sheetpile crack, then plated and welded from both sides.

PORT DIRECTOR'S REPORT

PD Baker reported;

- The draft F20 budget is going to the Council on Monday. The F21 activity for July and August is looking good based on increased gravel exports, but will advise further at end of season.
- The Corps CAP 107 Study to deepen/widen the dredge limits of the Inner Harbor is moving along. Recent monthly project calls requested details on the burial depth of the NJUS force main and vessel specs with data of incidents associated with the congested harbor.
- The team is doing a structural analysis on the South and East Walls to determine dredge toe depths and surface load limits. The East Wall was built with tie backs, but the South Wall does not. Once the analysis is complete, information will be shared with the Commission.

- The CAP Study sediment sampling and analysis RFP is on the street and due back on Aug 27th – we are hopeful that samples can be obtained before freeze up, but some contractors have indicated a desire to work from the ice. The Corps has agreed to extend the report due date to March 15th 2021 to allow flexibility in obtaining the samples.
- We anticipate flipping the switch on a 4-camera ‘bubble’ by the end of Sept, once it can be installed on a taller pole that is adjacent to the High Ramp. This design should provide adequate camera coverage of both cargo ramps and the adjacent staging/laydown area.

Discussion:

- Lean commented that tension rods of some type may serve to strengthen the existing South Wall and not require a rebuild of the entire face.
- McLarty commented that there may be an issue with overall face height of the sheetpile.
- West commented that if we are going to do sediment samples through the ice we need to be sure any jack up mining barges are not in the way.
- West asked if the Corps had put the next 3-year dredging contract out to bid, which PD Baker commented no, but it is presently being reviewed by port staff.
- Sheffield inquired on the status of the Water Resources Development Act (WRDA) legislation, with Baker commenting that it had been passed out of the Transportation & Infrastructure Committee, and onto the main body for a floor vote.

OLD BUSINESS

Landside Property Development – Laydown & Access

Discussion:

Lean commented;

- That as we have a member of the Planning Commission here he wanted to comment that he was thinking we need to keep our eye on the property north of Little Creek Rd, where the dog lots were located. It was noted that that area is all mining tailings and thawed ground and could be a good spot for USCG office or other governmental building or future development of that type.
- That the Snake River Bridge and approach are very important to the Port and City of Nome so we need to keep a close eye not only on the Port but also ground to the North, but there is property in that area that is already platted for the cemetery.

NEW BUSINESS

None.

CITIZENS' COMMENTS

None.

COMMISSIONER'S COMMENTS

Rowe commented that it was important to make sure we get what the Port/City wants in these projects and there have been a lot of good ideas and priorities. Straightening out of access ways and taking out some of the grade on the TBS north side access.

McLarty commented that he likes planning and being ahead of the curve on some of these items. Feels that we will have a lot more miners utilizing the Port of Nome in the 2021 season due to the price of gold. Laying the TBS pad and new container rows is important before we get more users.

Sheffield commented that 6hrs after leaving Seward yesterday the USCG HEALY had a catastrophic propulsion system failure on one side which resulted in them having to cancel all research missions in the Arctic and head to Seattle for dry dock repairs. This throws a huge wrench in research activity in the Beaufort and Chukchi Sea. The OSCAR DYSON is leaving Seattle soon to try and salvage some of these science missions but is not ice-hardened so will not go as far north as the HEALY. Lastly, there was recently a big marine debris event starting end of July for Gambell, Savoonga, Unalakleet, Nome, Wales, Diomedes, and Shishmaref. Trash with foreign (Russian and other) writing on it has been washing up in mass and the USCG, DEC, NOAA Marine Debris Program and others are working to track the source.

Smithhisler had no comments.

Lean commented that the ADF&G research vessel PANDALUS is in port after just finishing their trawl work, with results to be released soon. A lot of folks are interested in this information.

West commented that development of the TBS pad is a good idea to do now so we should be working with our neighbors on drainage, settling and other issues on development in the area. Likes the idea of identifying short, medium and long term needs for port development. Noted that there are a lot of inquiries right now about large amounts of gravel being loaded out from the Port of Nome in the 2021 season. One project was 280,000 tons of gravel and other smaller loads that would start later in the year. Noted it was nice to see freight coming in on the bigger mainlines but wondered how 2020 wharfage will compare to previous years in cargo, fuel and gravel.

ADJOURNMENT

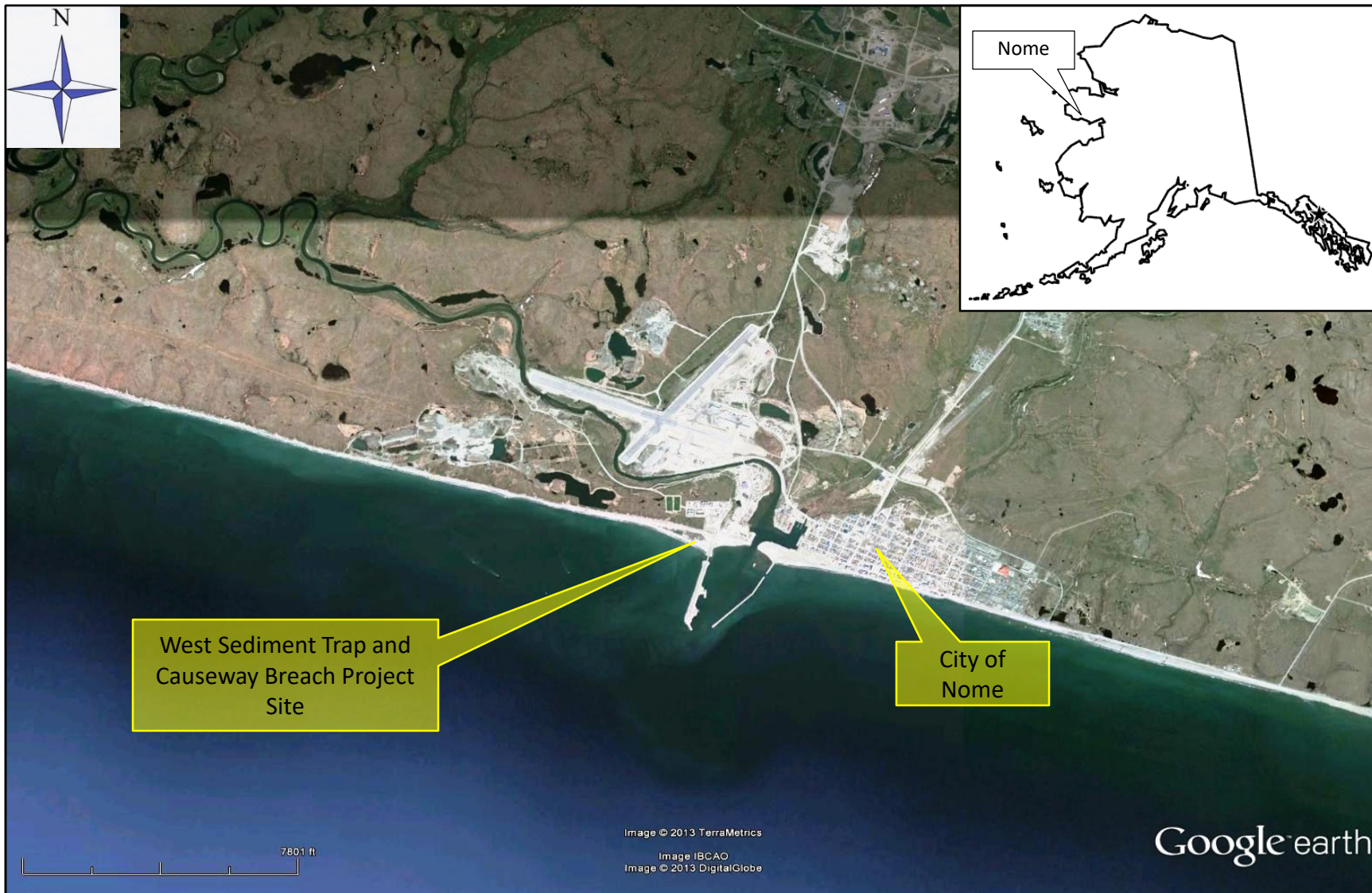
Motion was made by McLarty for adjournment 7:43 pm.

APPROVED and **SIGNED** this 17th day of September, 2020.

Jim West, Chairman

ATTEST:

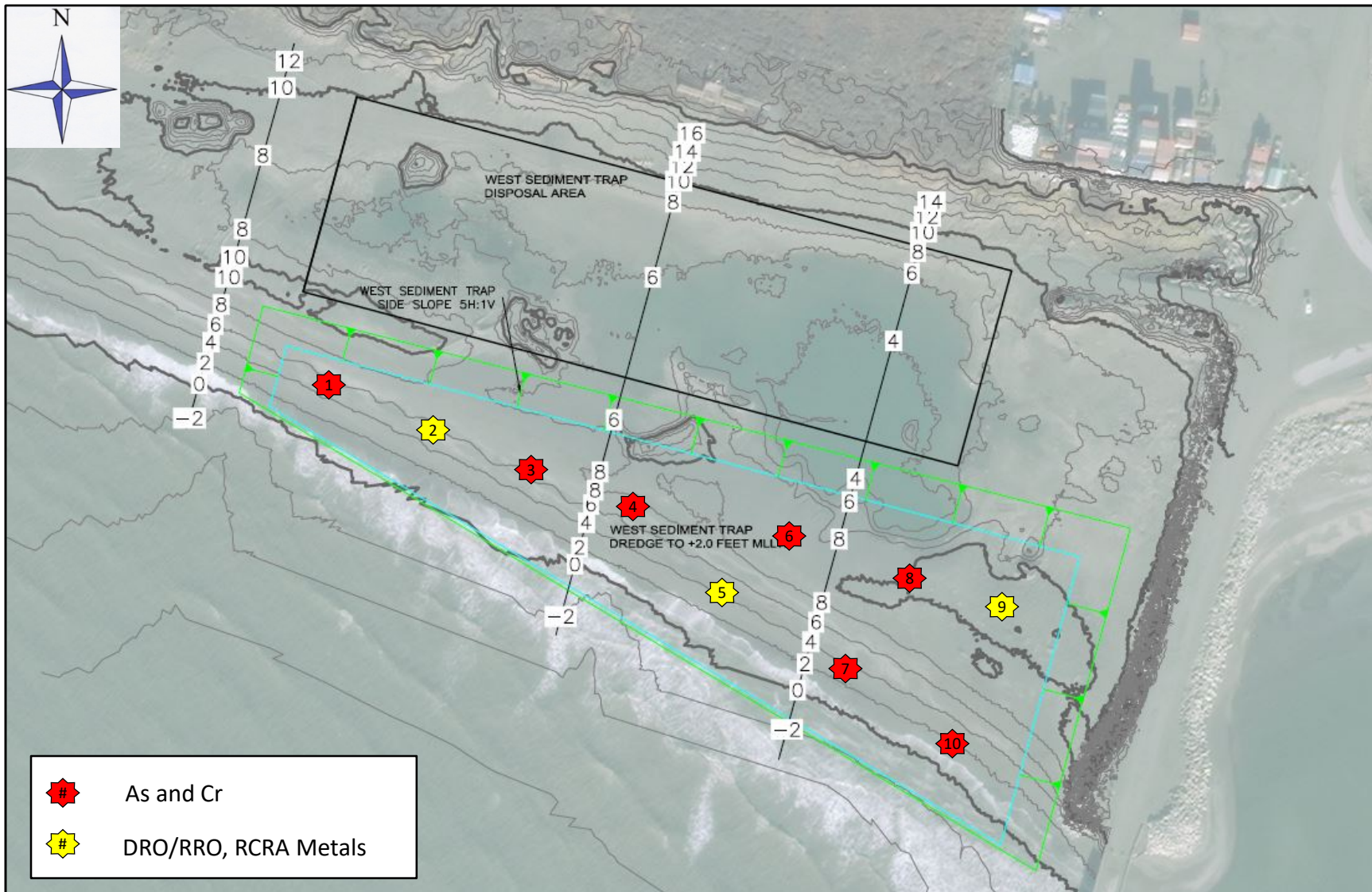
Joy Baker, Port Director



**Nome West Sediment Trap and Causeway
Breach Project Location
CEPOA-EC-EE**



**Figure 1:
Site Location and
Vicinity**

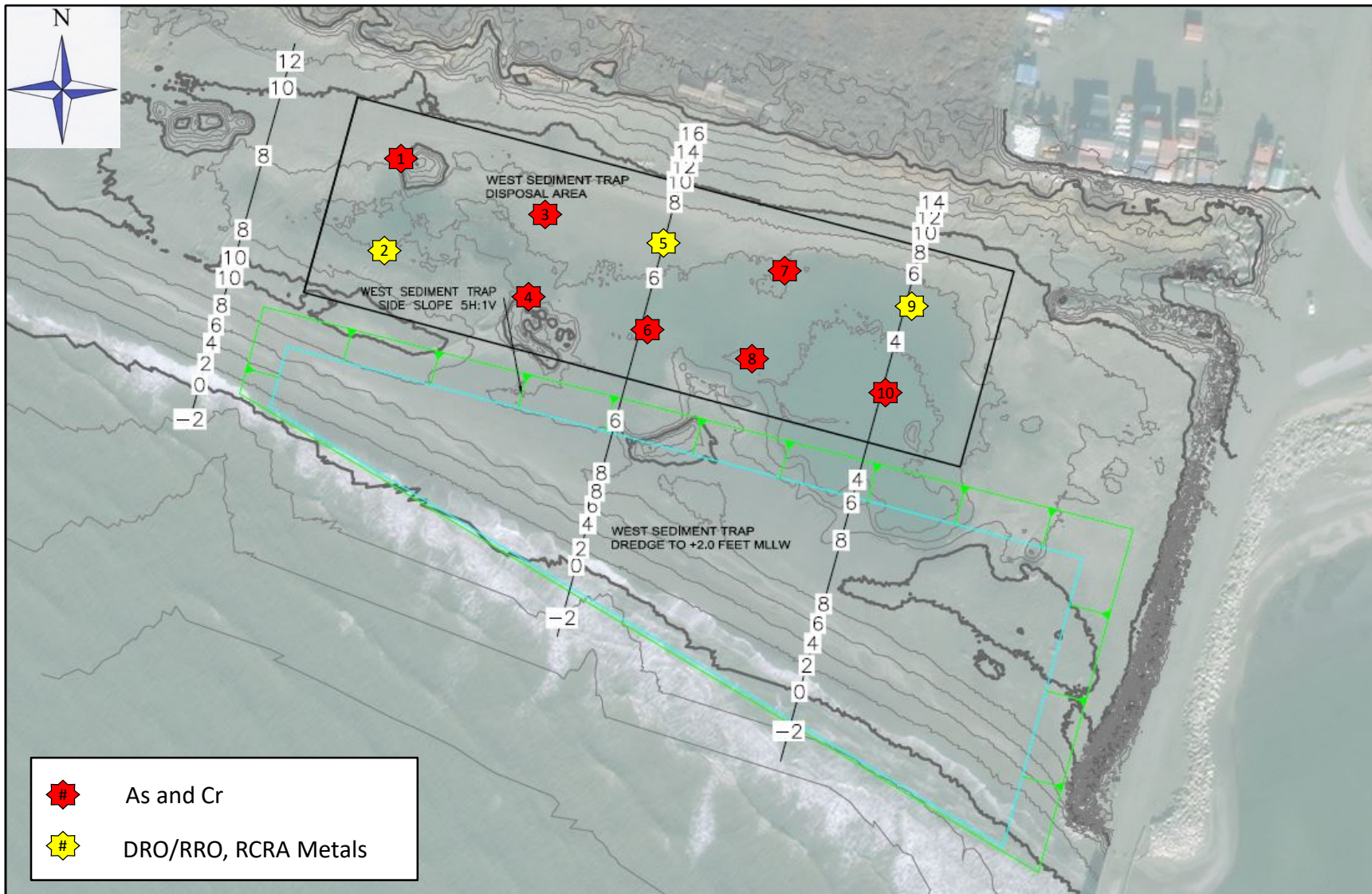


Nome West Sediment Trap and Causeway
Breach Project Location
CEPOA-EC-EE



US Army Corps
of Engineers
Alaska District

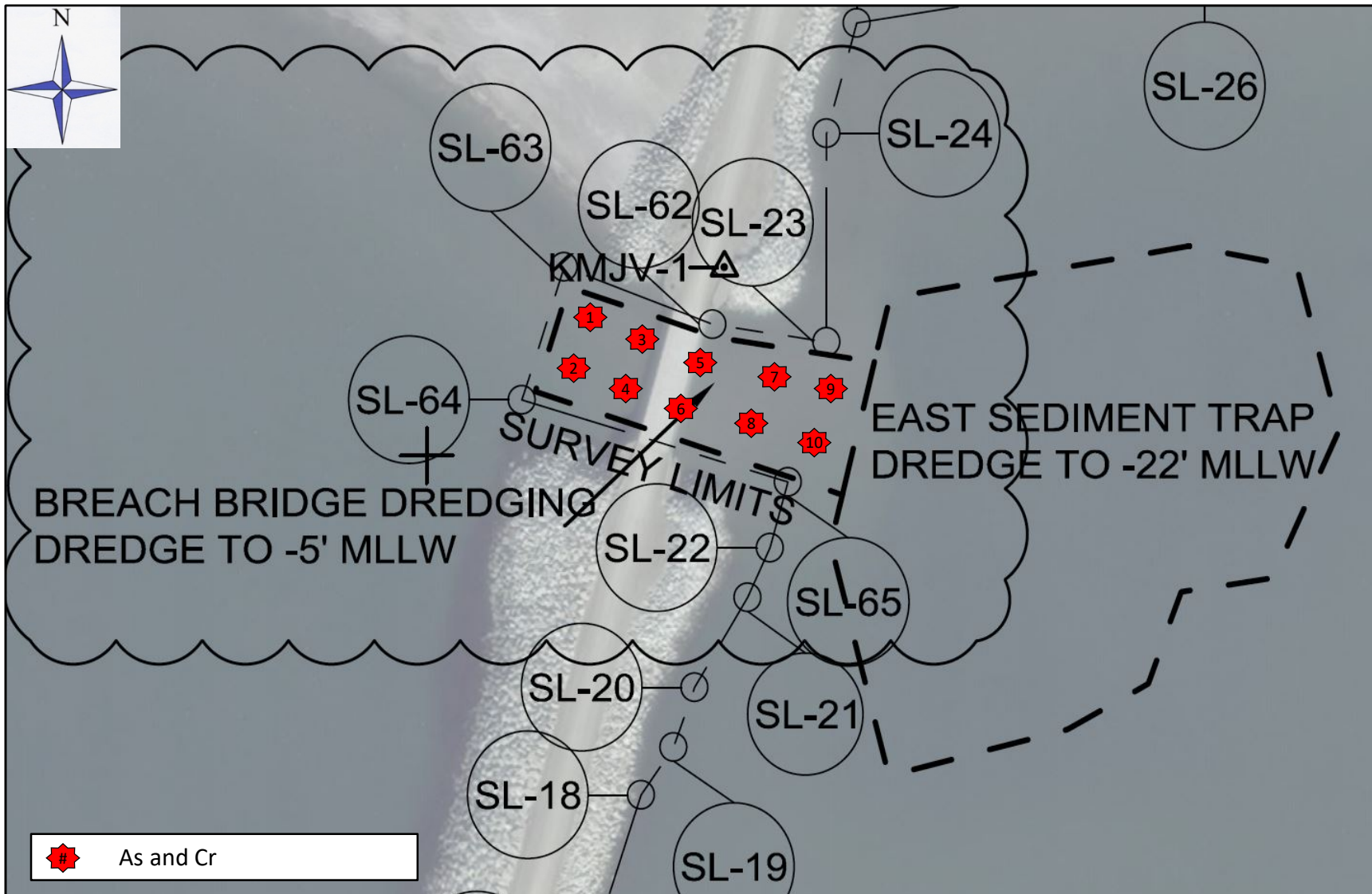
Figure 2:
West Sediment Trap
Sample Locations



Nome West Sediment Trap and Causeway
Breach Project Location
CEPOA-EC-EE



Figure 3:
Dewatering/Storage
Area Sample Locations



Nome West Sediment Trap and Causeway
Breach Project Location
CEPOA-EC-EE



Figure 4:
Causeway Breach Area
Sample Locations

U.S. investigates 'unprofessional interactions' after Russian military confronts Bering Sea fishermen

By **Nathaniel Herz, Alaska's Energy Desk - Anchorage** - August 28, 2020



A Russian vessel participating in military exercises on the Bering Sea steams past the pollock trawler Vesteraalen on Wednesday. (Courtesy Steve Elliott)

Steve Elliott's trawler, the Vesteraalen, was fishing for Bering Sea pollock Wednesday afternoon when he and his crew started hearing voices speaking Russian on their ship's radio — an unusual development, given that they were 80 miles from the U.S.-Russian maritime boundary.

Soon after, though, the voices switched to English, with a stern message to Elliott's boat, and the dozen others all fishing within a few miles: Move.

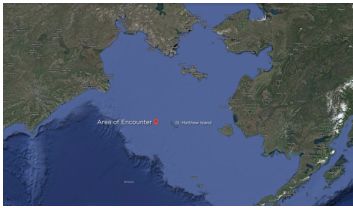
"Three warships and two support vessels of theirs were coming and would not turn," Elliott said in an interview over the Vesteraalen's satellite phone. "And they came marching right through the fleet."

Other vessels reported being buzzed by Russian aircraft and ordered out of the area on a specific heading. And the incident has now drawn the attention of both of Alaska's U.S. senators and an investigation by three federal agencies into what they're calling reports of "unprofessional interactions" by the Russian military.

RELATED: *Over 50 warships were involved in Russian Navy exercises that surprised Alaska trawlers*

The altercation interrupted fishing for several boats, and some industry players say they're worried about continuing impacts of exercises that, according to a federal notice, could run

into September. This year's summer pollock season has already been challenging, with slower fishing and added precautions due to the COVID-19 pandemic, and vessels only have until Nov. 1 to catch their limit.



A map of the close encounter between American fishing boats and Russian military vessels on the Bering Sea on Wednesday, August 26, 2020. (Valerie Kern/Alaska Public Media)

"We were caught by surprise," said Stephanie Madsen, executive director of the **At-Sea Processors Association**, a trade group of 13 large vessels that catch Bering Sea pollock and process it in onboard factories. "It caused a disruption in our fishing operations for at least the 24- to 36-hour period where we were trying to get the facts about what was happening. And then it's unclear what impacts could continue through the time that the Russians have given us notice the exercises will be underway."

Elliott said that in three decades of fishing, he's never seen anything like what he experienced Wednesday. But experts say this is unlikely to be the last encounter between Russian and American vessels in the Bering Sea, as the warming Arctic becomes an area of increasing military and economic focus for global powers.

"Welcome to the future," said **Heather Conley**, an Arctic expert at the Center for Strategic and International Studies. "Unfortunately, I think we're going to see more of this type of exercising and significant military presence in the Arctic — we just haven't seen it for a long time."

The pollock trawlers were operating within the U.S. "exclusive economic zone" — an area that reserves fishing rights for American boats but doesn't block international vessels from entering or operating, said Kip Wadlow, a Juneau-based U.S. Coast Guard spokesman.

While the Coast Guard called the exercises "pre-planned" and said that a notice about them was published earlier this month, fishing industry representatives argued that it was useless to them, because it was issued through a system they don't regularly monitor.

In interviews, Bering Sea fishermen and executives described a chaotic and unsettling run-in with the military assets, which **the Russian government now describes as part of "massive drills"** happening for the first time ever in the region, with missiles, submarines and dozens of warships and planes.

The Blue North, which was fishing for cod to the northeast of the trawl fleet, was buzzed six times by a Russian aircraft that, by radio, ordered the ship out of the area on a specific course at "maximum speed," according to Mike Fitzgerald, a crew member.

"I won't say we were fearful, because we're Bering Sea fishermen. But this goes beyond anything when you really know what happened," Fitzgerald said. "We had Russian military aircraft threatening us: 'Danger area. Missile area. Proceed out of here.' That's unheard of, and it's really wrong that we haven't gotten more protection out here."

Fitzgerald also provided a photo, sent by another fishing vessel, that appeared to show what fishermen thought was a Russian submarine surfaced close to the shore of St.

Matthew Island, which is part of the United States. But one defense analyst on Twitter, H.I. Sutton, **said the photo actually showed a U.S. naval submarine**, not a Russian one.

Republican U.S. Sen. Dan Sullivan said in a prepared statement that the exercises are a “stark reminder of why we need a strong U.S. military presence in the Arctic.”

“In recent months, Russian provocation has only increased. Our commercial fishing fleet encountered a frightening situation, with huge safety implications,” the statement quoted Sullivan as saying. “Clearly, there was a communications breakdown among our military agencies, and we are working to get to the bottom of it — so that this type of incident, which caught our fishermen off guard, does not happen again.”

Republican U.S. Sen. Lisa Murkowski also released a statement saying she’d been briefed by Coast Guard and NORAD officials in an effort to understand what happened, and to ensure that maritime interactions are conducted “lawfully, peacefully and with due regard for the safety of those at sea.”

On Thursday, military officials said only that they were monitoring the situation, and that the Russian military exercises were taking place in international waters “well outside the U.S. territorial sea.”

But on Friday, the Trump administration released a sharper statement, saying that the three federal agencies are investigating reports of “unprofessional interactions by Russian military forces with U.S. fishing vessels in the Bering Sea.”

“Initial indications are that these interactions stem from a Russian naval exercise,” said Larry Pixa, a spokesman for the U.S. Department of State, which is working with the U.S. Coast Guard.

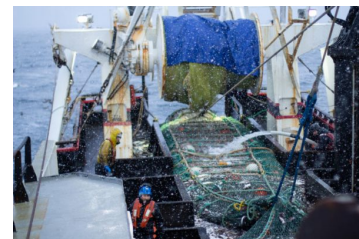
Experts say that the incident comes as the U.S. — not just Russia — has also become more assertive in the Arctic. Conley said there’s been **increasing American naval and air activity in the Barents Sea**, near Norway, and that the two nations are “signaling to one another” about the strategic and military importance of the Arctic.

The fishing boats’ experience in the Bering Sea highlights the need for enhanced systems of communication as the Arctic becomes more crowded, and it should serve as a learning experience, said **Mike Sfraga**, director of the Wilson Center’s Polar Institute and a former vice chancellor at University of Alaska Fairbanks.

The Russian military wasn’t operating outside “international norms” in conducting its Bering Sea drills, and neither were the American fishermen, Sfraga said. But though it appears that



This photo shows a submarine surfaced not far from the shore of U.S.-owned St. Matthew Island, in the Bering Sea. Fishermen thought the submarine was Russian, but defense analysts say it's a U.S. naval vessel. (Courtesy Mike Fitzgerald)



Crew members on the fishing vessel Commodore empty a trawl net of pollock during a trip on the Bering Sea last year. (Nat Herz/Alaska's Energy Desk)

certain parts of the U.S. government were made aware of the exercises in advance, that message didn't get passed along to the pollock fleet, he added.

"This is what most of us worry about," he said. "It seems to beckon for a higher, government-to-government level discussion about how we engage in the future, because this will not be the last time."

National Public Radio diplomatic correspondent Michele Kelemen contributed reporting from Washington, D.C.

This story has been updated to add detail about the photo of the submarine that reportedly surfaced near St. Matthew Island.

Nathaniel Herz, Alaska's Energy Desk - Anchorage

Select Language ▼

Invoice No	Seq	Description	Inv Date	Quantity	Unit Price	Extended Price	Billing Code	Category
C/Whfg-Dry								
CARG IN/C								
200143	2	Cargo Tons In at Middle Dock	07/17/2019	.25	11.550	2.89	CARG IN/C	C/Whfg-Dry
200143	5	Dirty Dlt Tons In at Middle Dock	07/17/2019	26.93	6.300	169.66	CARG IN/C	C/Whfg-Dry
200203	2	Cargo Tons In at Middle Dock	08/07/2019	364.32	11.550	4,207.90	CARG IN/C	C/Whfg-Dry
200368	2	Cargo Tons In at Middle Dock	09/16/2019	69.12	11.550	798.34	CARG IN/C	C/Whfg-Dry
200774	2	Cargo Tons In at Middle Dock	11/18/2019	227.82	11.550	2,631.32	CARG IN/C	C/Whfg-Dry
201189	2	Cargo Tons In at Westgold Dock	06/09/2020	333.47	12.710	4,238.40	CARG IN/C	C/Whfg-Dry
201334	2	Cargo Tons In at Middle Dock	06/30/2020	443.11	12.710	5,631.93	CARG IN/C	C/Whfg-Dry
200079	2	Cargo Tons In at City Dock	07/15/2019	2,202.82	11.550	25,442.57	CARG IN/C	C/Whfg-Dry
200154	5	Cargo Tons In at City Dock	07/22/2019	.21	11.550	2.43	CARG IN/C	C/Whfg-Dry
200211	2	Cargo Tons In at City Dock	08/09/2019	2,854.91	11.550	32,974.21	CARG IN/C	C/Whfg-Dry
200313	3	Cargo Tons In at City Dock	08/16/2019	35.99	11.550	415.68	CARG IN/C	C/Whfg-Dry
200449	2	Cargo Tons In at City Dock	09/23/2019	1,867.52	11.550	21,569.86	CARG IN/C	C/Whfg-Dry
200616	2	Cargo Tons In at City Dock	11/04/2019	1,473.74	11.550	17,021.70	CARG IN/C	C/Whfg-Dry
201190	2	Cargo Tons In at City Dock	06/09/2020	2,414.50	12.710	30,688.30	CARG IN/C	C/Whfg-Dry
201327	5	Cargo Tons In at City Dock	06/30/2020	7.52-	12.710	95.58-	CARG IN/C	C/Whfg-Dry
201329	2	Cargo Tons In at City Dock	06/30/2020	1,038.89	12.710	13,204.29	CARG IN/C	C/Whfg-Dry
201329	6	Cargo Tons In at City Dock - Kivalina	06/30/2020	313.78	12.710	3,988.14	CARG IN/C	C/Whfg-Dry
201329	7	Cargo Tons In at City Dock - Weight Corr	06/30/2020	53.52-	12.710	680.24-	CARG IN/C	C/Whfg-Dry
201329	8	Cargo Tons In at City Dock	06/30/2020	17.35-	12.710	220.52-	CARG IN/C	C/Whfg-Dry
200333	2	Cargo Tons In at Middle Dock	09/03/2019	546.13	11.550	6,307.80	CARG IN/C	C/Whfg-Dry
200334	2	Cargo Tons In at City Dock	09/03/2019	93.70	11.550	1,082.24	CARG IN/C	C/Whfg-Dry
200474	2	Cargo Tons In at Middle Dock	09/30/2019	50.00	11.550	577.50	CARG IN/C	C/Whfg-Dry
201292	2	Cargo Tons In at Middle Dock	06/30/2020	262.21	12.710	3,332.69	CARG IN/C	C/Whfg-Dry
201196	2	Cargo Tons In at West Gold Dock	06/11/2020	48.00	12.710	610.08	CARG IN/C	C/Whfg-Dry

Total CARG IN/C:

14,589.03

173,901.59

CARG OS/C

200143	3	Cargo Tons Through at Middle Dock	07/17/2019	.25	5.800	1.45	CARG OS/C	C/Whfg-Dry
200143	6	Dirty Dirt Tons Through at Middle Dock	07/17/2019	26.93	3.080	82.94	CARG OS/C	C/Whfg-Dry
200203	3	Cargo Tons Through at Middle Dock	08/07/2019	284.70	5.800	1,651.26	CARG OS/C	C/Whfg-Dry
200368	3	Cargo Tons OS Through at Middle Dock	09/16/2019	2.73	5.800	15.83	CARG OS/C	C/Whfg-Dry
200447	3	Cargo Tons Through at Cswy	09/23/2019	4.59	5.800	26.62	CARG OS/C	C/Whfg-Dry
200774	3	Cargo Tons Through at Middle Dock	11/18/2019	25.95	5.800	150.51	CARG OS/C	C/Whfg-Dry
201189	3	Cargo Tons Through at Westgold Dock	06/09/2020	22.61	6.380	144.25	CARG OS/C	C/Whfg-Dry
200158	3	Cargo Tons Through at Cswy	07/23/2019	36.44	5.800	211.35	CARG OS/C	C/Whfg-Dry
200159	3	Cargo Tons Through at Cswy	07/23/2019	3.00	5.800	17.40	CARG OS/C	C/Whfg-Dry
200162	4	Cargo Tons Through at Cswy	07/24/2019	26.70	5.800	154.86	CARG OS/C	C/Whfg-Dry
200306	3	Cargo Tons Through at Cswy	08/15/2019	5.00	5.800	29.00	CARG OS/C	C/Whfg-Dry
200452	3	Cargo Tons Through at Cswy	09/23/2019	13.75	5.800	79.75	CARG OS/C	C/Whfg-Dry
200454	3	Cargo Tons Through at Cswy	09/23/2019	.75	5.800	4.35	CARG OS/C	C/Whfg-Dry
200455	3	Cargo Tons Through at Cswy	09/23/2019	35.58	5.800	206.36	CARG OS/C	C/Whfg-Dry
200456	3	Cargo Tons Through at Cswy	09/23/2019	68.25	5.800	395.85	CARG OS/C	C/Whfg-Dry
200478	3	Cargo Tons Through at Cswy	09/30/2019	31.35	5.800	181.83	CARG OS/C	C/Whfg-Dry
200617	3	Cargo Tons Through at Cswy	11/04/2019	5.66	5.800	32.83	CARG OS/C	C/Whfg-Dry
200782	4	Cargo Tons Through at City Dock - W900	12/09/2019	1.58-	3.080	4.87-	CARG OS/C	C/Whfg-Dry
200782	7	Cargo Tons Through at City Dock - W900	12/09/2019	7.50-	5.800	43.50-	CARG OS/C	C/Whfg-Dry
200782	9	Cargo Tons Through at City Dock - W900	12/09/2019	7.48	3.080	23.04	CARG OS/C	C/Whfg-Dry
200782	13	Cargo Tons Through at City Dock - W900	12/09/2019	.59-	5.800	3.42-	CARG OS/C	C/Whfg-Dry
200858	3	Cargo Tons Through at City Dock - W900	12/24/2019	5.29	5.800	30.68	CARG OS/C	C/Whfg-Dry
200858	5	Cargo Tons Through at City Dock - W900	12/24/2019	2.70	5.800	15.66	CARG OS/C	C/Whfg-Dry
200859	3	Cargo Tons Through at City Dock - W900	12/31/2019	10.18	5.800	59.04	CARG OS/C	C/Whfg-Dry
200860	3	Cargo Tons Through at City Dock - W900	12/31/2019	8.53	5.800	49.47	CARG OS/C	C/Whfg-Dry

R Column: R = Recurring Billing

T Column: T = Taxable

Invoice No	Seq	Description	Inv Date	Quantity	Unit Price	Extended Price	Billing Code	Category
200860	5	Cargo Tons Through at City Dock - W900	12/31/2019	1.24	5.800	7.19	CARG OS/C	C/Whfg-Dry
200860	7	Cargo Tons Through at City Dock - W900	12/31/2019	3.36	5.800	19.49	CARG OS/C	C/Whfg-Dry
200860	9	Cargo Tons Through at City Dock - W900	12/31/2019	83.24	3.080	256.38	CARG OS/C	C/Whfg-Dry
200860	11	Cargo Tons Through at City Dock - W900	12/31/2019	18.28	5.800	106.02	CARG OS/C	C/Whfg-Dry
200333	3	Cargo Tons Through at Middle Dock	09/03/2019	120.00	5.800	696.00	CARG OS/C	C/Whfg-Dry
201292	3	Cargo Tons Through at Middle Dock	06/30/2020	309.66	6.380	1,975.63	CARG OS/C	C/Whfg-Dry
201324	4	Cargo Tons Through at Middle Dock	06/30/2020	213.91	6.380	1,364.75	CARG OS/C	C/Whfg-Dry
201325	4	Cargo Tons Through at Middle Dock	06/30/2020	78.66	6.380	501.85	CARG OS/C	C/Whfg-Dry
Total CARG OS/C:				1,440.38		8,400.87		
CARG OUT/C								
200143	4	Cargo Tons Out at Middle Dock	07/17/2019	5.50	11.550	63.53	CARG OUT/	C/Whfg-Dry
200579	2	Cargo Tons Out at Middle Dock	10/22/2019	132.30	11.550	1,528.07	CARG OUT/	C/Whfg-Dry
200615	1	Cargo Tons Out at City Dock	11/04/2019	827.50	11.550	9,557.63	CARG OUT/	C/Whfg-Dry
200774	4	Cargo Tons Out at Middle Dock	11/18/2019	493.33	11.550	5,697.96	CARG OUT/	C/Whfg-Dry
201189	4	Cargo Tons Out at Westgold Dock	06/09/2020	4.07	12.710	51.73	CARG OUT/	C/Whfg-Dry
200782	1	Cargo Tons Out at City Dock - W9003 SB	12/09/2019	164.16	11.550	1,896.05	CARG OUT/	C/Whfg-Dry
200782	2	Cargo Tons Out at City Dock - W9006 SB	12/09/2019	125.98	11.550	1,455.07	CARG OUT/	C/Whfg-Dry
200782	5	Cargo Tons Out at City Dock - W9007 SB	12/09/2019	143.65	11.550	1,659.16	CARG OUT/	C/Whfg-Dry
200858	1	Cargo Tons Out at City Dock - W9008 SB	12/24/2019	316.45	11.550	3,655.00	CARG OUT/	C/Whfg-Dry
200860	1	Cargo Tons Out at City Dock	12/31/2019	213.05	11.550	2,460.73	CARG OUT/	C/Whfg-Dry
200228	2	Cargo Tons Out at City Dock	08/14/2019	50.00	11.550	577.50	CARG OUT/	C/Whfg-Dry
200466	2	Cargo Tons Out at Middle Dock	09/23/2019	235.62	11.550	2,721.41	CARG OUT/	C/Whfg-Dry
201324	3	Cargo Tons Out at Middle Dock	06/30/2020	14.68	12.710	186.58	CARG OUT/	C/Whfg-Dry
201325	3	Cargo Tons Out at Middle Dock	06/30/2020	287.66	12.710	3,656.16	CARG OUT/	C/Whfg-Dry
200165	2	Cargo Tons Out at City Dock	07/24/2019	17.00	11.550	196.35	CARG OUT/	C/Whfg-Dry
201191	2	Cargo Tons Out at Middle Dock	06/09/2020	74.25	12.710	943.72	CARG OUT/	C/Whfg-Dry
201191	4	Super Sac Tons Out at Middle Dock	06/09/2020	67.50	6.930	467.78	CARG OUT/	C/Whfg-Dry
201192	3	Super Sac Tons Out at Middle Dock	06/09/2020	10.00	6.930	69.30	CARG OUT/	C/Whfg-Dry
Total CARG OUT/C:				3,182.70		36,843.73		
Total C/Whfg-Dry:				19,212.11		219,146.19		
C/WhfgFuel								
FUEL IN/C								
200312	1	Jet A1 Gallons In at City Dock	08/16/2019	745,547.10	.035	26,094.15	FUEL IN/C	C/WhfgFuel
200312	2	RUL Gallons In at City Dock	08/16/2019	372,479.00	.035	13,036.77	FUEL IN/C	C/WhfgFuel
200312	3	ULSD #2 Gallons In at City Dock	08/16/2019	765,852.80	.035	26,804.85	FUEL IN/C	C/WhfgFuel
200613	1	Gallons Jet A In at City Dock	11/04/2019	695,844.10	.035	24,354.54	FUEL IN/C	C/WhfgFuel
200614	1	Gallons ULSD #2 In at City Dock	11/04/2019	451,296.90	.035	15,795.39	FUEL IN/C	C/WhfgFuel
200614	2	Gallons RUL In at City Dock	11/04/2019	397,735.30	.035	13,920.74	FUEL IN/C	C/WhfgFuel
200614	3	Gallons ULSD #1 In at City Dock	11/04/2019	48,344.30	.035	1,692.05	FUEL IN/C	C/WhfgFuel
200165	3	Gallons ULSD #2 In at Cswy - West Tank	07/24/2019	195,236.00	.035	6,833.26	FUEL IN/C	C/WhfgFuel
200311	3	ULSD #2 Gallons In at City Dock - West	08/16/2019	180,714.00	.035	6,324.99	FUEL IN/C	C/WhfgFuel
200311	4	Gallons In at City Dock - West Tank Farm	08/16/2019	232,873.00	.035	8,150.56	FUEL IN/C	C/WhfgFuel
200331	2	Gallons Jet In at City Dock to West Tank	09/03/2019	516,425.00	.035	18,074.88	FUEL IN/C	C/WhfgFuel
200331	3	Gallons ULSD 2 In at Cswy to West Tank	09/03/2019	400,531.00	.035	14,018.59	FUEL IN/C	C/WhfgFuel
200611	2	Gallons Jet In at Cswy - West Tank Farm	11/04/2019	170,392.00	.035	5,963.72	FUEL IN/C	C/WhfgFuel
200612	2	Gallons ULSD #2 In at City Dock - West	11/04/2019	187,194.00	.035	6,551.79	FUEL IN/C	C/WhfgFuel
200680	1	Gallons In at City Dock - NJUS Tank Far	11/09/2019	2,139,399.00	.035	74,878.97	FUEL IN/C	C/WhfgFuel
Total FUEL IN/C:				7,499,863.50		262,495.25		

R Column: R = Recurring Billing

T Column: T = Taxable

Invoice No	Seq	Description	Inv Date	Quantity	Unit Price	Extended Price	Billing Code	Category
FUEL OS/C								
200311	2	Gallons Overside at City Dock - Kays Pt t	08/16/2019	164,556.00	.012	1,974.67	FUEL OS/C	C/WhfgFuel
Total FUEL OS/C:				164,556.00		1,974.67		
FUEL OUT/C								
200308	1	Gallons Out at City Dock	08/15/2019	42,201.80	.023	970.64	FUEL OUT/C	C/WhfgFuel
200309	1	Gallons Out at City Dock	08/15/2019	42,211.50	.023	970.86	FUEL OUT/C	C/WhfgFuel
200776	1	Gallons Out at Cswy	11/18/2019	73,032.00	.023	1,679.74	FUEL OUT/C	C/WhfgFuel
200467	1	Gallons Out at City Dock via Pipeline	09/23/2019	96,268.00	.023	2,214.16	FUEL OUT/C	C/WhfgFuel
Total FUEL OUT/C:				253,713.30		5,835.40		
Total C/WhfgFuel:				7,918,132.80		270,305.32		
C/Whf-Grav								
GRVL>2K/C								
200203	4	Gravel Tons >2K Out at West Gold Dock	08/07/2019	8,377.89	1.950	16,336.89	GRVL>2K/C	C/Whf-Grav
200227	2	Gravel Tons >2K Out at Middle Dock	08/14/2019	8,377.89	1.950	16,336.89	GRVL>2K/C	C/Whf-Grav
200318	2	Gravel Tons >2K Out at Cswy	08/23/2019	9,218.08	1.950	17,975.26	GRVL>2K/C	C/Whf-Grav
200476	2	Gravel (Fine Agg) Tons >2K Out at Cswy	09/30/2019	1,700.00	1.950	3,315.00	GRVL>2K/C	C/Whf-Grav
200477	2	Gravel (Coarse & Fine Agg) Tons >2K O	09/30/2019	5,742.08	1.950	11,197.06	GRVL>2K/C	C/Whf-Grav
200149	2	Rock Tons >2K Out at Cswy	07/19/2019	10,901.00	1.950	21,256.95	GRVL>2K/C	C/Whf-Grav
200226	2	Gravel Tons >2K Out at Middle Dock	08/13/2019	9,701.50	1.950	18,917.93	GRVL>2K/C	C/Whf-Grav
200329	2	Gravel Tons >2K Out at Cswy	09/03/2019	7,000.00	1.950	13,650.00	GRVL>2K/C	C/Whf-Grav
Total GRVL>2K/C:				61,018.44		118,985.98		
GRVL>40K/C								
201196	3	Gravel Tons >40K Out at West Gold Doc	06/11/2020	3,200.00	1.820	5,824.00	GRVL>40K/C	C/Whf-Grav
201240	3	Gravel Tons >40K Out at Cswy	06/17/2020	3,420.00	1.820	6,224.40	GRVL>40K/C	C/Whf-Grav
201258	2	Gravel Tons >40K Out at West Gold Doc	06/22/2020	3,116.00	1.820	5,671.12	GRVL>40K/C	C/Whf-Grav
201261	2	Gravel Tons >40K Out at West Gold Doc	06/24/2020	3,910.00	1.820	7,116.20	GRVL>40K/C	C/Whf-Grav
Total GRVL>40K/C:				13,646.00		24,835.72		
GRVL2K<=/C								
201324	2	Gravel Tons 2K and < Out at Cswy	06/30/2020	400.00	2.810	1,124.00	GRVL2K<=/C	C/Whf-Grav
201325	2	Dirty Dirt Tons Out at Middle Dock	06/30/2020	3.00	3.080	9.24	GRVL2K<=/C	C/Whf-Grav
200571	2	Gravel Tons 2K and < Out at Cswy	10/21/2019	1,723.80	2.550	4,395.69	GRVL2K<=/C	C/Whf-Grav
200572	2	Gravel Tons 2K and < Out at Cswy	10/21/2019	1,732.80	2.550	4,418.64	GRVL2K<=/C	C/Whf-Grav
200580	2	Gravel Tons 2K and < Out at Cswy	10/26/2019	1,727.40	2.550	4,404.87	GRVL2K<=/C	C/Whf-Grav
200464	2	Gravel Tons 2K and < Out at Cswy	09/23/2019	1,727.40	2.550	4,404.87	GRVL2K<=/C	C/Whf-Grav
200464	6	Void - Gravel Tons 2K and < Out at Cswy	10/26/2019	1,727.40-	2.550	4,404.87-	GRVL2K<=/C	C/Whf-Grav
201191	3	Gravel Tons 2K and < Out at Middle Doc	06/09/2020	1,000.00	2.810	2,810.00	GRVL2K<=/C	C/Whf-Grav
201192	2	Gravel Tons 2K and < Out at Middle Doc	06/09/2020	1,506.00	2.810	4,231.86	GRVL2K<=/C	C/Whf-Grav
Total GRVL2K<=/C:				8,093.00		21,394.30		
Total C/Whf-Grav:				82,757.44		165,216.00		
H/Whfg-Dry								
CARG IN/H								
200204	2	Cargo Tons In at High Ramp	08/07/2019	27.30	11.550	315.32	CARG IN/H	H/Whfg-Dry
200314	2	Cargo Tons In at High Ramp	08/19/2019	105.00	11.550	1,212.75	CARG IN/H	H/Whfg-Dry

R Column: R = Recurring Billing
T Column: T = Taxable

Invoice No	Seq	Description	Inv Date	Quantity	Unit Price	Extended Price	Billing Code	Category
200315	2	Cargo Tons In at High Ramp	08/19/2019	9.00	11.550	103.95	CARG IN/H	H/Whfg-Dry
200447	2	Cargo Tons In at Barge Ramp	09/23/2019	4.59	11.550	53.01	CARG IN/H	H/Whfg-Dry
200447	4	Cargo Tons In at Barge Ramp	09/23/2019	27.57	11.550	318.43	CARG IN/H	H/Whfg-Dry
200448	2	Cargo Tons In at High Ramp	09/23/2019	3.76	11.550	43.43	CARG IN/H	H/Whfg-Dry
200460	3	Cargo Tons In at Barge Ramp	09/23/2019	20.00	11.550	231.00	CARG IN/H	H/Whfg-Dry
200772	3	Cargo Tons In at High Ramp	11/18/2019	5.26	11.550	60.75	CARG IN/H	H/Whfg-Dry
200773	2	Cargo Tons In at High Ramp	11/18/2019	96.47	11.550	1,114.23	CARG IN/H	H/Whfg-Dry
200775	2	Cargo Tons In at High Ramp	11/18/2019	157.75	11.550	1,822.01	CARG IN/H	H/Whfg-Dry
200154	2	Cargo Tons In at High Ramp	07/22/2019	136.90	11.550	1,581.20	CARG IN/H	H/Whfg-Dry
200156	2	Cargo Tons In at High Ramp	07/22/2019	113.81	11.550	1,314.51	CARG IN/H	H/Whfg-Dry
200158	2	Cargo Tons In at High Ramp	07/23/2019	38.24	11.550	441.67	CARG IN/H	H/Whfg-Dry
200159	2	Cargo Tons In at High Ramp	07/23/2019	3.00	11.550	34.65	CARG IN/H	H/Whfg-Dry
200159	5	Cargo Tons In at High Ramp	07/23/2019	.75	11.550	8.66	CARG IN/H	H/Whfg-Dry
200162	2	Cargo Tons In at High Ramp	07/24/2019	37.45	11.550	432.55	CARG IN/H	H/Whfg-Dry
200306	2	Cargo Tons In at Barge Ramp	08/15/2019	83.28	11.550	961.88	CARG IN/H	H/Whfg-Dry
200452	2	Cargo Tons In at High Ramp	09/23/2019	13.75	11.550	158.81	CARG IN/H	H/Whfg-Dry
200454	2	Cargo Tons In at High Ramp	09/23/2019	10.75	11.550	124.16	CARG IN/H	H/Whfg-Dry
200455	2	Cargo Tons In at Barge Ramp	09/23/2019	41.58	11.550	480.25	CARG IN/H	H/Whfg-Dry
200456	2	Cargo Tons In at Barge Ramp	09/23/2019	94.65	11.550	1,093.21	CARG IN/H	H/Whfg-Dry
200478	2	Cargo Tons In at High Ramp	09/30/2019	31.35	11.550	362.09	CARG IN/H	H/Whfg-Dry
200479	2	Cargo Tons In at High Ramp	09/30/2019	29.03	11.550	335.30	CARG IN/H	H/Whfg-Dry
200617	2	Cargo Tons In at High Ramp	11/04/2019	83.33	11.550	962.46	CARG IN/H	H/Whfg-Dry
200782	3	Cargo Tons In at High Ramp - W9006 SB	12/09/2019	1.58-	6.300	9.95-	CARG IN/H	H/Whfg-Dry
200782	6	Cargo Tons In at High Ramp - W9007 SB	12/09/2019	7.50-	11.550	86.63-	CARG IN/H	H/Whfg-Dry
200782	8	Cargo Tons In at High Ramp - W9007 SB	12/09/2019	7.48	6.300	47.12	CARG IN/H	H/Whfg-Dry
200782	10	Cargo Tons In at High Ramp - W9007 SB	12/09/2019	2.30	11.550	26.57	CARG IN/H	H/Whfg-Dry
200782	12	Cargo Tons In at High Ramp - W9007 SB	12/09/2019	.59-	11.550	6.81-	CARG IN/H	H/Whfg-Dry
200858	2	Cargo Tons In at Barge Ramp - W9008 S	12/24/2019	5.29	11.550	61.10	CARG IN/H	H/Whfg-Dry
200858	4	Cargo Tons In at High Ramp - W9008 SB	12/24/2019	2.70	11.550	31.19	CARG IN/H	H/Whfg-Dry
200859	2	Cargo Tons In at High Ramp	12/31/2019	10.18	11.550	117.58	CARG IN/H	H/Whfg-Dry
200860	2	Cargo Tons In at High Ramp - W9009 SB	12/31/2019	8.53	11.550	98.52	CARG IN/H	H/Whfg-Dry
200860	4	Cargo Tons In at Barge Ramp - W9009 S	12/31/2019	1.24	11.550	14.32	CARG IN/H	H/Whfg-Dry
200860	6	Cargo Tons In at Barge Ramp - W9009 S	12/31/2019	3.36-	11.550	38.81-	CARG IN/H	H/Whfg-Dry
200860	8	Cargo Tons In at High Ramp - W9009 SB	12/31/2019	25.27-	6.300	159.20-	CARG IN/H	H/Whfg-Dry
200860	10	Cargo Tons In at High Ramp - W9009 SB	12/31/2019	11.74-	11.550	135.60-	CARG IN/H	H/Whfg-Dry
201323	2	Cargo Tons In at High Ramp	06/30/2020	4.40	12.710	55.92	CARG IN/H	H/Whfg-Dry
201327	2	Cargo Tons In at High Ramp	06/30/2020	16.00	12.710	203.36	CARG IN/H	H/Whfg-Dry
200366	2	Dirty Dirt Tons In at Harbor	09/16/2019	108.50	6.300	683.55	CARG IN/H	H/Whfg-Dry
200366	3	Cargo Tons In at High Ramp	09/16/2019	44.02	11.550	508.43	CARG IN/H	H/Whfg-Dry
200468	2	Cargo Tons In at High Ramp	09/23/2019	13.53	11.550	156.27	CARG IN/H	H/Whfg-Dry
200141	2	Cargo Tons In at High Ramp	07/17/2019	10.50	11.550	121.28	CARG IN/H	H/Whfg-Dry
200605	2	Cargo Tons In at High Ramp	11/04/2019	197.00	11.550	2,275.35	CARG IN/H	H/Whfg-Dry
200606	2	Cargo Tons In at High Ramp	11/04/2019	81.50	11.550	941.33	CARG IN/H	H/Whfg-Dry
200205	2	Cargo Tons In at Barge Ramp	08/08/2019	16.00	11.550	184.80	CARG IN/H	H/Whfg-Dry
201259	2	Cargo Tons In at Barge Ramp	06/22/2020	72.50	12.710	921.48	CARG IN/H	H/Whfg-Dry
201280	2	Cargo Tons In at High Ramp	06/29/2020	235.97	12.710	2,999.18	CARG IN/H	H/Whfg-Dry
201275	2	Cargo Tons In at High Ramp	06/29/2020	156.90	12.710	1,994.20	CARG IN/H	H/Whfg-Dry
200168	2	Cargo Tons In at Barge Ramp	07/25/2019	206.25	11.550	2,382.19	CARG IN/H	H/Whfg-Dry
200328	2	Cargo Tons In at High Ramp	09/03/2019	.25	11.550	2.89	CARG IN/H	H/Whfg-Dry
200365	2	Tons Dirty Dirt Supersacs In at High Ram	09/16/2019	703.75	6.300	4,433.63	CARG IN/H	H/Whfg-Dry
200465	2	Dirty Dirt Tons In at East Ramp	09/23/2019	360.00	6.300	2,268.00	CARG IN/H	H/Whfg-Dry
200465	3	Cargo Tons In at East Ramp	09/23/2019	25.00	11.550	288.75	CARG IN/H	H/Whfg-Dry
Total CARG IN/H:				3,414.32		33,946.29		

R Column: R = Recurring Billing

T Column: T = Taxable

Invoice No	Seq	Description	Inv Date	Quantity	Unit Price	Extended Price	Billing Code	Category
CARG OS/H								
200204	3	Cargo Tons Through at High Ramp	08/07/2019	25.05	5.800	145.29	CARG OS/H	H/Whfg-Dry
200314	3	Cargo Tons Through at High Ramp	08/19/2019	3.00	5.800	17.40	CARG OS/H	H/Whfg-Dry
200447	5	Cargo Tons Through at Barge Ramp	09/23/2019	27.57	5.800	159.91	CARG OS/H	H/Whfg-Dry
200460	4	Cargo Tons Through at Barge Ramp	09/23/2019	20.00	5.800	116.00	CARG OS/H	H/Whfg-Dry
200772	4	Cargo Tons Through at High Ramp	11/18/2019	5.26	5.800	30.51	CARG OS/H	H/Whfg-Dry
200773	3	Cargo Tons Through at High Ramp	11/18/2019	62.32	5.800	361.46	CARG OS/H	H/Whfg-Dry
200775	3	Cargo Tons Through at High Ramp	11/18/2019	155.60	5.800	902.48	CARG OS/H	H/Whfg-Dry
200079	3	Cargo Tons Through at High Ramp	07/15/2019	1,217.87	5.800	7,063.65	CARG OS/H	H/Whfg-Dry
200154	3	Cargo Tons Through at High Ramp	07/22/2019	110.75	5.800	642.35	CARG OS/H	H/Whfg-Dry
200154	6	Cargo Tons Through at High Ramp	07/22/2019	.21	5.800	1.22	CARG OS/H	H/Whfg-Dry
200156	3	Cargo Tons Through at High Ramp	07/22/2019	112.76	5.800	654.01	CARG OS/H	H/Whfg-Dry
200159	6	Cargo Tons Through at High Ramp	07/23/2019	55.75	5.800	323.35	CARG OS/H	H/Whfg-Dry
200161	5	Cargo Tons Through at Barge Ramp	07/24/2019	25.23	5.800	146.33	CARG OS/H	H/Whfg-Dry
200162	3	Cargo Tons Through at High Ramp	07/24/2019	10.75	5.800	62.35	CARG OS/H	H/Whfg-Dry
200211	3	Cargo Tons Through at High Ramp	08/09/2019	2,076.71	5.800	12,044.92	CARG OS/H	H/Whfg-Dry
200313	4	Cargo Tons Through at High Ramp	08/16/2019	35.99	5.800	208.74	CARG OS/H	H/Whfg-Dry
200449	3	Cargo Tons Through at High Ramp	09/23/2019	1,316.76	5.800	7,637.21	CARG OS/H	H/Whfg-Dry
200459	2	Cargo Tons Through at High Ramp	09/23/2019	1.74	5.800	10.09	CARG OS/H	H/Whfg-Dry
200479	3	Cargo Tons Through at High Ramp	09/30/2019	23.70	5.800	137.46	CARG OS/H	H/Whfg-Dry
200616	3	Cargo Tons Through at High Ramp	11/04/2019	239.30	5.800	1,387.94	CARG OS/H	H/Whfg-Dry
200782	11	Cargo Tons Through at High Ramp - W9	12/09/2019	2.30	5.800	13.34	CARG OS/H	H/Whfg-Dry
201190	3	Cargo Tons Through at High Ramp	06/09/2020	1,271.75	6.380	8,113.77	CARG OS/H	H/Whfg-Dry
201323	3	Cargo Tons Through at High Ramp	06/30/2020	4.40	6.380	28.07	CARG OS/H	H/Whfg-Dry
201327	3	Cargo Tons Through at High Ramp	06/30/2020	16.00	6.380	102.08	CARG OS/H	H/Whfg-Dry
201327	4	Cargo Tons Through at High Ramp	06/30/2020	7.52-	6.380	47.98-	CARG OS/H	H/Whfg-Dry
Total CARG OS/H:				6,813.25		40,261.95		

CARG OUT/H

200204	4	Cargo Tons Out at High Ramp	08/07/2019	1.75	11.550	20.21	CARG OUT/	H/Whfg-Dry
200447	6	Cargo Tons Out at Barge Ramp	09/23/2019	.13	11.550	1.50	CARG OUT/	H/Whfg-Dry
200448	3	Cargo Tons Out at High Ramp	09/23/2019	4.96	11.550	57.29	CARG OUT/	H/Whfg-Dry
200460	2	Cargo Tons Out at Barge Ramp	09/23/2019	117.35	11.550	1,355.39	CARG OUT/	H/Whfg-Dry
200772	2	Cargo Tons Out at High Ramp	11/18/2019	54.00	11.550	623.70	CARG OUT/	H/Whfg-Dry
200775	4	Cargo Tons Out at High Ramp	11/18/2019	22.50	11.550	259.88	CARG OUT/	H/Whfg-Dry
200154	4	Cargo Tons Out at High Ramp	07/22/2019	5.25	11.550	60.64	CARG OUT/	H/Whfg-Dry
200158	4	Cargo Tons Out at High Ramp	07/23/2019	43.71	11.550	504.85	CARG OUT/	H/Whfg-Dry
200159	4	Cargo Tons Out at High Ramp	07/23/2019	7.50	11.550	86.63	CARG OUT/	H/Whfg-Dry
200161	2	Cargo Tons Out at Barge Ramp	07/24/2019	27.00	11.550	311.85	CARG OUT/	H/Whfg-Dry
200162	5	Cargo Tons Out at High Ramp	07/24/2019	87.50	11.550	1,010.63	CARG OUT/	H/Whfg-Dry
200304	2	Cargo Tons Out at High Ramp	08/15/2019	9.08	11.550	104.87	CARG OUT/	H/Whfg-Dry
200305	2	Cargo Tons Out at Barge Ramp	08/15/2019	17.60	11.550	203.28	CARG OUT/	H/Whfg-Dry
200306	4	Cargo Tons Out at Barge Ramp	08/15/2019	5.00	11.550	57.75	CARG OUT/	H/Whfg-Dry
200313	2	Cargo Tons Out at High Ramp	08/16/2019	77.55	11.550	895.70	CARG OUT/	H/Whfg-Dry
200451	2	Cargo Tons Out at High Ramp	09/23/2019	3.50	11.550	40.43	CARG OUT/	H/Whfg-Dry
200453	2	Cargo Tons Out at High Ramp	09/23/2019	139.12	11.550	1,606.84	CARG OUT/	H/Whfg-Dry
200454	4	Cargo Tons Out at High Ramp	09/23/2019	170.50	11.550	1,969.28	CARG OUT/	H/Whfg-Dry
200455	4	Cargo Tons Out at Barge Ramp	09/23/2019	4.80	11.550	55.44	CARG OUT/	H/Whfg-Dry
200479	4	Cargo Tons Out at High Ramp	09/30/2019	122.75	11.550	1,417.76	CARG OUT/	H/Whfg-Dry
200859	4	Cargo Tons Out at High Ramp	12/31/2019	26.75	11.550	308.96	CARG OUT/	H/Whfg-Dry
201323	4	Cargo Tons Out at High Ramp	06/30/2020	41.44	12.710	526.70	CARG OUT/	H/Whfg-Dry
200080	2	Cargo Tons Out at High Ramp	07/15/2019	288.00	11.550	3,326.40	CARG OUT/	H/Whfg-Dry
200151	2	Cargo Tons Out at High Ramp	07/19/2019	155.62	11.550	1,797.41	CARG OUT/	H/Whfg-Dry
200366	4	Cargo Tons Out at High Ramp	09/16/2019	101.34	11.550	1,170.48	CARG OUT/	H/Whfg-Dry

R Column: R = Recurring Billing

T Column: T = Taxable

Invoice No	Seq	Description	Inv Date	Quantity	Unit Price	Extended Price	Billing Code	Category
200468	3	Cargo Tons Out at High Ramp	09/23/2019	22.45	11.550	259.30	CARG OUT/	H/Whfg-Dry
200575	3	Cargo Tons Out at High Ramp	10/21/2019	7.68	11.550	88.70	CARG OUT/	H/Whfg-Dry
200605	3	Cargo Tons Out at High Ramp	11/04/2019	45.00	11.550	519.75	CARG OUT/	H/Whfg-Dry
200606	3	Cargo Tons Out at High Ramp	11/04/2019	90.00	11.550	1,039.50	CARG OUT/	H/Whfg-Dry
200164	2	Cargo Tons Out at High Ramp	07/24/2019	33.00	11.550	381.15	CARG OUT/	H/Whfg-Dry
200332	2	Cargo Tons Out at Barge Ramp	09/03/2019	8.00	11.550	92.40	CARG OUT/	H/Whfg-Dry
200569	2	Cargo Tons Out at East Wall	10/21/2019	10.00	11.550	115.50	CARG OUT/	H/Whfg-Dry
200367	2	Cargo Tons Out at Barge Ramp	09/16/2019	13.20	11.550	152.46	CARG OUT/	H/Whfg-Dry
200475	2	Cargo Tons Out at Barge Ramp	09/30/2019	100.75	11.550	1,163.66	CARG OUT/	H/Whfg-Dry
200142	1	Cargo Tons Out at Barge Ramp	07/17/2019	1.50	11.550	17.33	CARG OUT/	H/Whfg-Dry
200224	1	Cargo Tons Out at Barge Ramp	08/13/2019	1.25	11.550	14.44	CARG OUT/	H/Whfg-Dry
200324	2	Cargo Tons Out at Barge Ramp	09/03/2019	1.25	11.550	14.44	CARG OUT/	H/Whfg-Dry
200325	2	Cargo Tons Out at Barge Ramp	09/03/2019	.65	11.550	7.51	CARG OUT/	H/Whfg-Dry
200206	2	Cargo Tons Out at Barge Ramp	08/08/2019	70.00	11.550	808.50	CARG OUT/	H/Whfg-Dry
200207	2	Cargo Tons Out at East Ramp	08/08/2019	53.50	11.550	617.93	CARG OUT/	H/Whfg-Dry
200328	3	Cargo Tons Out at High Ramp	09/03/2019	208.50	11.550	2,408.18	CARG OUT/	H/Whfg-Dry
200365	3	Cargo Tons Out at High Ramp	09/16/2019	151.75	11.550	1,752.71	CARG OUT/	H/Whfg-Dry
200465	4	Cargo Tons Out at East Ramp	09/23/2019	6.50	11.550	75.08	CARG OUT/	H/Whfg-Dry
Total CARG OUT/H:				2,359.68		27,302.41		
Total H/Whfg-Dry:				12,587.25		101,510.65		
H/WhfgFuel								
FUEL IN/H								
200568	2	Gallons RUL In at Tank Farm	10/21/2019	400,172.00	.035	14,006.02	FUEL IN/H	H/WhfgFuel
200607	2	Gallons ULSD In at East Tank Farm	11/04/2019	48,904.00	.035	1,711.64	FUEL IN/H	H/WhfgFuel
200608	2	Gallons Jet In at Harbor - East Tank Far	11/04/2019	242,134.00	.035	8,474.69	FUEL IN/H	H/WhfgFuel
200608	3	Gallons RUL In at Harbor - Fuel Truck	11/04/2019	2,245.00	.035	78.58	FUEL IN/H	H/WhfgFuel
200609	2	Gallons Jet In at Harbor - East Tank Far	11/04/2019	201,526.00	.035	7,053.41	FUEL IN/H	H/WhfgFuel
200609	3	Gallons RUL In at Harbor - East Tank Far	11/04/2019	69,083.00	.035	2,417.91	FUEL IN/H	H/WhfgFuel
200610	2	Gallon Jet In at Harbor - East Tank Farm	11/04/2019	94,195.00	.035	3,296.83	FUEL IN/H	H/WhfgFuel
200610	3	Gallons ULSD #1 In at Harbor - East Tan	11/04/2019	243,006.00	.035	8,505.21	FUEL IN/H	H/WhfgFuel
201277	2	Gallons In at East Dock - Barge to Tank	06/29/2020	184,952.00	.039	7,213.13	FUEL IN/H	H/WhfgFuel
Total FUEL IN/H:				1,486,217.00		52,757.42		
FUEL OUT/H								
200363	2	Gallons #2 Out at Harbor	09/14/2019	56,126.00	.023	1,290.90	FUEL OUT/H	H/WhfgFuel
200363	3	Gallons Jet Out at Harbor	09/14/2019	46,230.00	.023	1,063.29	FUEL OUT/H	H/WhfgFuel
200363	4	Gallons RUL Out at Harbor	09/14/2019	37,097.00	.023	853.23	FUEL OUT/H	H/WhfgFuel
Total FUEL OUT/H:				139,453.00		3,207.42		
Total H/WhfgFuel:				1,625,670.00		55,964.84		
H/Whf-Grav								
GRVL2K<=/H								
200186	2	Armor Rock Tons 2K and < Out at Harbor	07/31/2019	310.00	2.550	790.50	GRVL2K<=/H	H/Whf-Grav
200150	2	Rock Tons 2K and < Out at Harbor	07/19/2019	886.00	2.550	2,259.30	GRVL2K<=/H	H/Whf-Grav
200225	2	Gravel Tons 2K and < Out at High Ramp	08/13/2019	619.63	2.550	1,580.06	GRVL2K<=/H	H/Whf-Grav
200330	2	Gravel Tons 2K and < Out at Harbor	09/03/2019	238.00	2.550	606.90	GRVL2K<=/H	H/Whf-Grav
200463	2	Gravel Tons 2K and < Out at High Ramp	09/23/2019	1,049.82	2.550	2,677.04	GRVL2K<=/H	H/Whf-Grav
200570	2	Gravel Tons 2K and < Out at Harbor	10/21/2019	951.98	2.550	2,427.55	GRVL2K<=/H	H/Whf-Grav
200573	2	Gravel Tons 2K and < Out at Harbor	10/21/2019	931.14	2.550	2,374.41	GRVL2K<=/H	H/Whf-Grav

R Column: R = Recurring Billing

T Column: T = Taxable

Invoice No	Seq	Description	Inv Date	Quantity	Unit Price	Extended Price	Billing Code	Category
200574	2	Gravel Tons 2K and < Out at Harbor	10/21/2019	1,114.10	2.550	2,840.96	GRVL2K<=/H	H/Whf-Grav
200575	2	Gravel Tons 2K and < Out at Harbor	10/21/2019	735.97	2.550	1,876.72	GRVL2K<=/H	H/Whf-Grav
200168	3	Rock Tons 2K and < Out at Harbor	07/25/2019	250.00	2.550	637.50	GRVL2K<=/H	H/Whf-Grav
Total GRVL2K<=/H:				7,086.64		18,070.94		
Total H/Whf-Grav:				7,086.64		18,070.94		
Grand Totals:				9,665,446.24		830,213.94		

Customer Number Hash: 156597

Customer Number Hash - Split: 321106

Total Number of Invoices: 129

Total Number of Transactions: 260

City of Nome
Revenues with Comparison to Budget
For the 12 Months Ending June 30, 2020

PORT OPERATING FUND

		Budget	Period ACT	YTD ACT	Unearned	Pcnt
	<u>CAUSEWAY FACILITY</u>					
80.3111.2001	Causeway Dockage	85,000.00	.00	69,135.69	15,864.31	81.3
80.3111.2002	Causeway Wharfage - Dry	160,000.00	.00	213,029.94	(53,029.94)	133.1
80.3111.2003	Causeway Wharfage - Fuel	285,000.00	.00	270,305.32	14,694.68	94.8
80.3111.2004	Causeway Wharfage - Gravel	125,000.00	.00	148,879.11	(23,879.11)	119.1
80.3111.2005	Causeway Storage Rental	15,000.00	.00	8,464.07	6,535.93	56.4
80.3111.2006	Causeway Utility Sales	15,000.00	.00	8,804.21	6,195.79	58.7
80.3111.2007	Causeway Misc Term Revenue	90,000.00	.00	82,253.00	7,747.00	91.4
	Total CAUSEWAY FACILITY	775,000.00	.00	800,871.34	(25,871.34)	103.3
	<u>CPV Excise Tax</u>					
80.3112.1001	CPV Excise Tax	.00	.00	2,345.00	(2,345.00)	.0
	Total CPV Excise Tax	.00	.00	2,345.00	(2,345.00)	.0
	<u>HARBOR FACILITY</u>					
80.3211.1001	Harbor Seasonal Dock Permit	115,000.00	.00	113,339.88	1,660.12	98.6
80.3211.2001	Harbor Dockage	75,000.00	.00	79,379.49	(4,379.49)	105.8
80.3211.2002	Harbor Wharfage - Dry	95,000.00	.00	101,510.65	(6,510.65)	106.9
80.3211.2003	Harbor Wharfage - Fuel	60,000.00	.00	55,964.84	4,035.16	93.3
80.3211.2004	Harbor Wharfage - Gravel	25,000.00	.00	18,070.94	6,929.06	72.3
80.3211.2005	Harbor Storage Rental	27,000.00	.00	23,927.92	3,072.08	88.6
80.3211.2006	Harbor Utility Sales	8,000.00	.00	5,061.84	2,938.16	63.3
80.3211.2007	Harbor Misc Term Revenue	7,000.00	.00	5,266.00	1,734.00	75.2
80.3211.2008	Leases, Rentals, Land, Bldgs	45,000.00	.00	35,644.76	9,355.24	79.2
	Total HARBOR FACILITY	457,000.00	.00	438,166.32	18,833.68	95.9
	<u>INDUSTRIAL PARK FACILITY</u>					
80.3411.2005	Industrial Park Storage Rental	250,000.00	.00	224,774.63	25,225.37	89.9
80.3411.2008	Leases, Rentals, Land, Bldgs	175,000.00	.00	194,887.20	(19,887.20)	111.4
	Total INDUSTRIAL PARK FACILITY	425,000.00	.00	419,661.83	5,338.17	98.7
	<u>OTHER MISC REVENUE</u>					
80.3511.0001	Copies, Fax, Pubs, Film Lcns	1,000.00	.00	900.00	100.00	90.0
80.3511.0002	Banking / NSF Check Fee	50.00	.00	35.00	15.00	70.0
80.3511.0003	Credit Card Service Fees	5.00	.00	.00	5.00	.0
80.3511.0004	Resale-Hats,Charts,Spills,Appl	5,000.00	.00	3,405.25	1,594.75	68.1
80.3511.0005	Other Port Revenue	5,000.00	.00	2,104.10	2,895.90	42.1
	Total OTHER MISC REVENUE	11,055.00	.00	6,444.35	4,610.65	58.3

City of Nome
Revenues with Comparison to Budget
For the 12 Months Ending June 30, 2020

PORT OPERATING FUND

		Budget	Period ACT	YTD ACT	Unearned	Pcnt
	<u>INTEREST EARNINGS</u>					
80.3611.2001	Interest Earnings Port Op	6,500.00	.00	9,670.90	(3,170.90)	148.8
80.3611.2002	Interest Earnings Causeway	1,000.00	.00	761.43	238.57	76.1
80.3611.2003	Investment Earnings	15,000.00	.00	40,994.09	(25,994.09)	273.3
	Total INTEREST EARNINGS	22,500.00	.00	51,426.42	(28,926.42)	228.6
	<u>CONTRIBUTIONS/OTHER</u>					
80.3711.0001	StAK Employer On-Behalf PERS	13,000.00	22,405.76	22,405.76	(9,405.76)	172.4
80.3711.0002	Other Contributions	2,500.00	.00	1,977.27	522.73	79.1
	Total CONTRIBUTIONS/OTHER	15,500.00	22,405.76	24,383.03	(8,883.03)	157.3
	<u>FUND BALANCE APPROPRIATION</u>					
80.3899.9999	Port of Nome Use Fund Balance	1,001,577.01	.00	.00	1,001,577.01	.0
	Total FUND BALANCE APPROPRIATION	1,001,577.01	.00	.00	1,001,577.01	.0
	Total Fund Revenue	2,707,632.01	22,405.76	1,743,298.29	964,333.72	64.4

City of Nome
Expenditures with Comparison to Budget
For the 12 Months Ending June 30, 2020

PORT OPERATING FUND

	Budget	Period ACT	YTD ACT	YTD ENC	Unexpended	Pcnt
** CAUSEWAY FACILITY **						
80.6111.1101	Salaries - Causeway Maint	3,500.00	.00	486.15	.00	3,013.85 13.9
80.6111.1102	Salaries - Causeway Operations	13,282.00	99.90	13,129.94	.00	152.06 98.9
80.6111.1103	Salaries - Causeway Admin	23,489.00	(17.50)	22,453.37	.00	1,035.63 95.6
80.6111.1411	Accrued Personal Leave - Cswy	3,405.00	.00	6,743.13	.00	(3,338.13) 198.0
80.6111.1421	Health Insurance - Cswy	3,401.00	.00	8,662.91	.00	(5,261.91) 254.7
80.6111.1431	Life Insurance - Cswy	98.00	.00	11.85	.00	86.15 12.1
80.6111.1441	FICA/Medicare - Cswy	3,127.00	7.64	2,766.21	.00	360.79 88.5
80.6111.1451	ESC - Causeway	400.00	.00	854.62	.00	(454.62) 213.7
80.6111.1461	PERS - Cswy	8,565.00	2,475.42	10,389.08	.00	(1,824.08) 121.3
80.6111.1471	Workers' Comp Ins - Cswy	1,549.00	.00	1,182.82	.00	366.18 76.4
80.6111.1520	Vehicle/Boat Insurance	498.00	.00	504.65	.00	(6.65) 101.3
80.6111.1530	Property/Building Insurance	32,450.00	.00	27,665.00	.00	4,785.00 85.3
80.6111.1810	Audit/Accounting	15,750.00	.00	15,573.71	.00	176.29 98.9
80.6111.1820	Engineering/Architectural Svcs	30,000.00	.00	12,989.75	.00	17,010.25 43.3
80.6111.1830	Legal Services	1,000.00	.00	117.00	.00	883.00 11.7
80.6111.1840	Survey/Appraisal Services	500.00	.00	.00	.00	500.00 .0
80.6111.1870	Other Professional/Contract Sv	10,000.00	.00	4,631.50	.00	5,368.50 46.3
80.6111.2040	Uniform/Clothing	250.00	.00	.00	.00	250.00 .0
80.6111.2071	Operating Supplies	1,500.00	.00	1,035.93	.00	464.07 69.1
80.6111.4010	Gas & Oil Supplies	500.00	.00	136.23	.00	363.77 27.3
80.6111.4020	Vehicle/Boat/Eq Parts & Supply	300.00	.00	590.72	75.00	(365.72) 221.9
80.6111.4030	Vehicle/Boat/Eq Maintenance	2,000.00	.00	658.54	75.00	1,266.46 36.7
80.6111.4050	Small Tools & Equipment	1,000.00	.00	87.48	.00	912.52 8.8
80.6111.4060	Tools & Eq Repair & Maint	1,000.00	.00	.00	.00	1,000.00 .0
80.6111.4080	Road Maintenance Materials	10,000.00	.00	9,934.00	.00	66.00 99.3
80.6111.4090	Docks & Foundations	10,000.00	.00	.00	.00	10,000.00 .0
80.6111.4100	Fuel Lines Maintenance	24,000.00	14,746.08	34,363.58	.00	(10,363.58) 143.2
80.6111.7010	Bldg Maint Materials & Supply	1,200.00	.00	188.63	.00	1,011.37 15.7
80.6111.7011	Janitorial Services & Supplies	250.00	.00	.00	.00	250.00 .0
80.6111.7021	Utilities - Electric	3,300.00	578.05	2,571.61	.00	728.39 77.9
80.6111.7023	Utilities - Sewer	1,750.00	300.00	1,500.00	.00	250.00 85.7
80.6111.7024	Utilities - Garbage	6,500.00	.00	4,628.28	.00	1,871.72 71.2
80.6111.7026	Utilities - Resale	9,500.00	.00	.00	.00	9,500.00 .0
80.6111.7510	Debt Interest Payment	155,656.00	.00	155,655.83	.00	.17 100.0
80.6111.8030	Machinery & Equipment	25,000.00	2,515.63	23,910.63	.00	1,089.37 95.6
Total ** CAUSEWAY FACILITY **		404,720.00	20,705.22	363,423.15	150.00	41,146.85 89.8

City of Nome
Expenditures with Comparison to Budget
For the 12 Months Ending June 30, 2020

PORT OPERATING FUND

	Budget	Period ACT	YTD ACT	YTD ENC	Unexpended	Pcnt
<u>** HARBOR FACILITY **</u>						
80.6211.1101 Salaries - Harbor	10,625.00	301.70	10,742.57	.00 (117.57)	101.1
80.6211.1411 Accrued Personal Lv - Harbor	192.00	.00	1,563.04	.00 (1,371.04)	814.1
80.6211.1421 Health Insurance - Harbor	2,721.00	.00	2,742.01	.00 (21.01)	100.8
80.6211.1431 Life Insurance - Harbor	23.00	.00	25.11	.00 (2.11)	109.2
80.6211.1441 FICA/Medicare - Harbor	1,064.00	41.15	880.02	.00	183.98	82.7
80.6211.1451 ESC - Harbor	300.00	.00	198.09	.00	101.91	66.0
80.6211.1461 PERS - Harbor	2,694.00	900.72	3,313.12	.00 (619.12)	123.0
80.6211.1471 Workers' Comp Ins - Harbor	1,110.00	.00	630.23	.00	479.77	56.8
80.6211.1520 Vehicle/Boat Insurance	498.00	.00	504.66	.00 (6.66)	101.3
80.6211.1530 Property/Building Insurance	20,152.00	.00	20,152.00	.00	.00	100.0
80.6211.1820 Engineering/Architectural Svcs	20,000.00	.00	9,162.50	.00	10,837.50	45.8
80.6211.1870 Other Professional/Contract Sv	15,000.00	3,591.80	9,981.74	.00	5,018.26	66.5
80.6211.2040 Uniform/Clothing	150.00	.00	.00	.00	150.00	.0
80.6211.2071 Operating Supplies	3,000.00	.00	1,904.38	.00	1,095.62	63.5
80.6211.4010 Gas & Oil Supplies	500.00	.00	136.24	.00	363.76	27.3
80.6211.4020 Vehicle/Boat/Eq Parts & Supply	500.00	.00	50.87	.00	449.13	10.2
80.6211.4030 Vehicle/Boat/Eq Maintenance	1,500.00	.00	573.36	.00	926.64	38.2
80.6211.4040 Vehicle/Boat Regis & Permits	10.00	.00	10.00	.00	.00	100.0
80.6211.4050 Small Tools & Equipment	1,000.00	1,355.65	1,355.65	152.61 (508.26)	150.8
80.6211.4080 Road Maintenance Materials	10,000.00	.00	9,934.00	.00	66.00	99.3
80.6211.4090 Docks & Foundations	5,000.00	1,617.62	6,017.42	75.00 (1,092.42)	121.9
80.6211.4100 Fuel Lines Maintenance	500.00	.00	.00	.00	500.00	.0
80.6211.7010 Bldg Maint Materials & Supply	3,000.00	236.13	1,177.37	.00	1,822.63	39.3
80.6211.7011 Janitorial Services & Supplies	100.00	.00	.00	.00	100.00	.0
80.6211.7021 Utilities - Electric	6,500.00	208.65	4,526.21	.00	1,973.79	69.6
80.6211.7022 Utilities - Water Meter	3,850.00	276.52	3,742.32	.00	107.68	97.2
80.6211.7023 Utilities - Sewer	5,000.00	374.42	4,348.04	.00	651.96	87.0
80.6211.7024 Utilities - Garbage	16,500.00	1,003.88	5,860.51	.00	10,639.49	35.5
80.6211.7025 Utilities - Heat	3,800.00	.00	2,775.99	.00	1,024.01	73.1
80.6211.7560 Payment in Lieu of Tax	14,137.00	.00	18,377.45	.00 (4,240.45)	130.0
80.6211.8010 Land/Buildings	5,000.00	.00	.00	.00	5,000.00	.0
80.6211.8030 Machinery & Equipment	25,000.00	2,515.62	23,910.62	.00	1,089.38	95.6
Total ** HARBOR FACILITY **	179,426.00	12,423.86	144,595.52	227.61	34,602.87	80.7

City of Nome
Expenditures with Comparison to Budget
For the 12 Months Ending June 30, 2020

PORT OPERATING FUND

		Budget	Period ACT	YTD ACT	YTD ENC	Unexpended	Pcnt
	<u>** CAPE NOME FACILITY **</u>						
80.6311.1820	Engineering/Architectural Svcs	1,500.00	.00	.00	.00	1,500.00	.0
80.6311.1830	Legal Services	500.00	.00	.00	.00	500.00	.0
80.6311.1870	Other Professional/Contract Sv	1,000.00	.00	.00	.00	1,000.00	.0
	<u>Total ** CAPE NOME FACILITY **</u>	<u>3,000.00</u>	<u>.00</u>	<u>.00</u>	<u>.00</u>	<u>3,000.00</u>	<u>.0</u>

City of Nome
Expenditures with Comparison to Budget
For the 12 Months Ending June 30, 2020

PORT OPERATING FUND

	Budget	Period ACT	YTD ACT	YTD ENC	Unexpended	Pcnt
<u>** INDUST PARK FACILITY **</u>						
80.6411.1101 Salaries - Industrial Park	2,656.00	.00	1,343.93	.00	1,312.07	50.6
80.6411.1411 Accrued Personal Leave - IP	72.00	.00	251.31	.00	(179.31)	349.0
80.6411.1421 Health Insurance - IP	680.00	.00	353.86	.00	326.14	52.0
80.6411.1431 Life Insurance - IP	6.00	.00	2.96	.00	3.04	49.3
80.6411.1441 FICA/Medicare - IP	266.00	.00	102.81	.00	163.19	38.7
80.6411.1451 ESC - Industrial Park	100.00	.00	31.85	.00	68.15	31.9
80.6411.1461 PERS - IP	673.00	91.41	387.07	.00	285.93	57.5
80.6411.1471 Workers' Comp Ins - IP	277.00	.00	101.33	.00	175.67	36.6
80.6411.1530 Property/Building Insurance	916.00	.00	916.00	.00	.00	100.0
80.6411.1820 Engineering/Architectural Svcs	10,000.00	540.00	1,457.50	.00	8,542.50	14.6
80.6411.1870 Other Professional/Contract Sv	10,000.00	.00	3,710.00	.00	6,290.00	37.1
80.6411.1940 Advertising	250.00	.00	.00	.00	250.00	.0
80.6411.2071 Operating Supplies	1,500.00	.00	.00	.00	1,500.00	.0
80.6411.4050 Small Tools & Equipment	1,000.00	.00	.00	.00	1,000.00	.0
80.6411.4080 Road Maintenance Materials	10,000.00	.00	9,934.01	.00	65.99	99.3
80.6411.4100 Fuel Lines Maintenance	24,500.00	14,746.07	38,800.57	.00	(14,300.57)	158.4
80.6411.7010 Bldg Maint Materials & Supply	1,000.00	410.50	466.50	.00	533.50	46.7
80.6411.7011 Janitorial Services & Supplies	250.00	.00	.00	.00	250.00	.0
80.6411.7021 Utilities - Electric	4,500.00	177.12	3,642.51	.00	857.49	80.9
80.6411.7023 Utilities - Sewer	2,000.00	300.00	1,500.00	.00	500.00	75.0
80.6411.7560 Payment in Lieu of Taxes	45,637.00	.00	53,934.40	.00	(8,297.40)	118.2
Total ** INDUST PARK FACILITY **	116,283.00	16,265.10	116,936.61	.00	(653.61)	100.6

City of Nome
Expenditures with Comparison to Budget
For the 12 Months Ending June 30, 2020

PORT OPERATING FUND

		Budget	Period ACT	YTD ACT	YTD ENC	Unexpended	Pcnt
** PORT ADMIN OFFICE **							
80.6711.1101	Salaries - Port Admin	86,088.00	1,688.05	80,220.80	.00	5,867.20	93.2
80.6711.1102	Salaries - Port Staff	247,850.00	6,540.65	198,129.99	.00	49,720.01	79.9
80.6711.1201	Salaries - Overtime	10,000.00	327.81	9,915.44	.00	84.56	99.2
80.6711.1301	Stipends - Port Commission	2,480.00	840.00	3,360.00	.00	(880.00)	135.5
80.6711.1411	Accrued Personal Lv - Port Adm	10,583.00	.00	11,831.90	.00	(1,248.90)	111.8
80.6711.1421	Health Insurance - Port Adm	51,265.00	.00	48,589.29	.00	2,675.71	94.8
80.6711.1431	Life Insurance - Port Adm	519.00	.00	342.43	.00	176.57	66.0
80.6711.1441	FICA/Medicare - Port Adm	27,842.25	655.91	22,639.76	.00	5,202.49	81.3
80.6711.1451	ESC - Port Admin	.00	1,731.18	2,240.06	.00	(2,240.06)	.0
80.6711.1461	PERS - Port Adm	69,345.00	20,598.72	75,188.71	.00	(5,843.71)	108.4
80.6711.1471	Workers' Comp Ins - Port Adm	10,433.89	.00	10,362.43	.00	71.46	99.3
80.6711.1520	Vehicle/Boat Insurance	3,007.00	.00	3,007.00	.00	.00	100.0
80.6711.1530	Property/Building Insurance	246.00	.00	246.00	.00	.00	100.0
80.6711.1810	Audit/Accounting	15,800.00	.00	15,573.70	.00	226.30	98.6
80.6711.1820	Engineering/Architectural Svcs	10,000.00	3,281.00	5,981.00	3,070.00	949.00	90.5
80.6711.1830	Legal Services	10,000.00	1,128.00	13,685.50	.00	(3,685.50)	136.9
80.6711.1850	Lobbying	130,000.00	4,000.00	106,989.38	4,000.00	19,010.62	85.4
80.6711.1870	Other Professional/Contract Sv	30,000.00	.00	29,373.56	.00	626.44	97.9
80.6711.1940	Advertising	2,000.00	.00	1,381.75	.00	618.25	69.1
80.6711.1950	Buildings/Land Rental	7,200.00	.00	6,875.00	.00	325.00	95.5
80.6711.2010	Communications	4,100.00	515.60	3,708.67	.00	391.33	90.5
80.6711.2012	Computer Network/Hardware/Soft	4,000.00	.00	6,349.11	249.00	(2,598.11)	165.0
80.6711.2020	Dues & Memberships	750.00	.00	560.00	.00	190.00	74.7
80.6711.2030	Travel, Training & Related Cost	30,000.00	703.04	18,886.80	221.95	10,891.25	63.7
80.6711.2070	Office Supplies	750.00	375.63	1,653.50	.00	(903.50)	220.5
80.6711.2071	Operating Supplies	3,000.00	325.66	3,262.58	.00	(262.58)	108.8
80.6711.2073	Resale Supplies	2,500.00	.00	2,195.16	.00	304.84	87.8
80.6711.3010	Sponsorship/Donation/Contrib	1,000.00	.00	2,500.00	.00	(1,500.00)	250.0
80.6711.4010	Gas & Oil Supplies	4,500.00	434.07	5,247.17	.00	(747.17)	116.6
80.6711.4020	Vehicle/Boat/Eq Parts & Supply	5,000.00	.00	4,702.31	.00	297.69	94.1
80.6711.4030	Vehicle/Boat/Eq Maintenance	5,000.00	.00	4,894.52	.00	105.48	97.9
80.6711.4040	Vehicle/Boat Regis & Permits	50.00	.00	30.00	.00	20.00	60.0
80.6711.7010	Bldg Maint Materials & Supply	3,000.00	548.16	2,463.05	.00	536.95	82.1
80.6711.7011	Janitorial Services & Supplies	250.00	.00	126.82	.00	123.18	50.7
80.6711.7540	Banking/Credit Card Fees	150.00	.00	368.24	.00	(218.24)	245.5
80.6711.7550	Bad Debt	5,000.00	.00	20.33	.00	4,979.67	.4
Total ** PORT ADMIN OFFICE **		793,709.14	43,693.48	702,901.96	7,540.95	83,266.23	89.5

City of Nome
Expenditures with Comparison to Budget
For the 12 Months Ending June 30, 2020

PORT OPERATING FUND

		Budget	Period ACT	YTD ACT	YTD ENC	Unexpended	Pcnt
	<u>** TRANSFERS - INTERFUNDS **</u>						
80.6888.8820	Transfers Out - Other Funds	1,210,493.87	1,188,174.51	1,188,174.51	.00	22,319.36	98.2
	Total ** TRANSFERS - INTERFUNDS *	1,210,493.87	1,188,174.51	1,188,174.51	.00	22,319.36	98.2
	Total Fund Expenditures	2,707,632.01	1,281,262.17	2,516,031.75	7,918.56	183,681.70	93.2
	Net Revenue Over Expenditures	.00	(1,258,856.41)	(772,733.46)	(7,918.56)	780,652.02	.0

City of Nome
Revenues with Comparison to Budget
For the 12 Months Ending June 30, 2020

PORT CAPITAL PROJECTS FUND

		Budget	Period ACT	YTD ACT	YTD ENC	Unexpended	Pcnt
	<u>PORT GRANTS & AWARDS</u>						
85.3811.0020	17-DC-005 Arctic DDP Design	235,714.19	24,934.75	166,212.40	.00	69,501.79	70.5
85.3811.0021	19-DC-008 Support Design ADDP	1,600,000.00	152,357.66	152,357.66	.00	1,447,642.34	9.5
85.3811.0050	NSEDC Hbr Concrete Ramp Repair	300,000.00	.00	.00	.00	300,000.00	.0
85.3811.7100	EDA Harbor Launch Ramp Repair	1,692,413.00	34,813.12	34,813.12	.00	1,657,599.88	2.1
	Total PORT GRANTS & AWARDS	3,828,127.19	212,105.53	353,383.18	.00	3,474,744.01	9.2
	<u>TRANSFERS - INTERFUNDS</u>						
85.3888.8820	Transfers In - Other Funds	1,210,493.87	1,188,174.51	1,188,174.51	.00	22,319.36	98.2
	Total TRANSFERS - INTERFUNDS	1,210,493.87	1,188,174.51	1,188,174.51	.00	22,319.36	98.2
	Total Fund Revenue	5,038,621.06	1,400,280.04	1,541,557.69	.00	3,497,063.37	30.6

City of Nome
Expenditures with Comparison to Budget
For the 12 Months Ending June 30, 2020

PORT CAPITAL PROJECTS FUND

		Budget	Period ACT	YTD ACT	YTD ENC	Unexpended	Pcnt
<u>PORT GRANTS & AWARDS</u>							
85.6811.2100	19-DC-008 Support Design ADDP	1,600,000.00	.00	513.82	.00	1,599,486.18	.0
85.6811.2200	17-DC-005 Arctic DDP Design	235,714.19	8,979.90	166,212.40	.00	69,501.79	70.5
85.6811.2300	Harbor CAP 107 Feasib Study	.00	1,324.36	151,843.84	.00	(151,843.84)	.0
85.6811.7100	EDA Harbor Launch Ramp Repair	1,692,413.00	62.50	43,516.40	.00	1,648,896.60	2.6
85.6811.8001	Grant Match Port Contribution	123,103.00	.00	.00	.00	123,103.00	.0
85.6811.8005	Concrete Barge Ramp Repairs	300,000.00	.00	.00	.00	300,000.00	.0
85.6811.8006	Port Waste Reception Facility	5,000.00	.00	.00	.00	5,000.00	.0
85.6811.8009	WestGold Dock Emergency Repair	1,047,390.87	.00	1,047,109.23	.00	281.64	100.0
85.6811.8011	Cswy Docks - Replace Anodes	35,000.00	300.00	300.00	.00	34,700.00	.9
85.6811.8013	IP Fuel Line Repairs	.00	66,031.00	132,062.00	.00	(132,062.00)	.0
Total PORT GRANTS & AWARDS		5,038,621.06	76,697.76	1,541,557.69	.00	3,497,063.37	30.6
Total Fund Expenditures		5,038,621.06	76,697.76	1,541,557.69	.00	3,497,063.37	30.6
Net Revenue Over Expenditures		.00	1,323,582.28	.00	.00	.00	.0



Memo

To: Glenn Steckman – City Manager
From: Joy L. Baker – Port Director
CC: Acting Mayor & Common Council; Nome Port Commission
Date: September 11, 2020
Re: Monthly Report/Capital Projects Update – September 2020

Administrative:

Staff have been kept busy with F20 closeout, billing, audit prep, grant reporting and project planning, with field staff working on cleanup and organization of the expanding storage properties. The Port Commission will be having a Regular Meeting on Thursday, 17 September 2020 to receive updates on closing F20 revenue, expenses and commodity volumes as compared to previous fiscal years. A Work Session will be held just prior, to strategize and diagram shoreside property layout, which will inform further discussion with the NJU Board at a joint Work Session scheduled for Monday, 21 September 2020 at 5:30 pm. Additional elements for discussion will focus on proposed use of the USAF West Nome Tank Farm, along with the 2021 construction of the AKDOT Port Road Improvements.

The replacement CDIP/AOOS buoy was deployed off Nome on 27 Aug 2020, and immediately began providing data to mariners regarding wave, current and water temperature. Unfortunately, on 8 Sept, sensors indicated the buoy electronics were colder than could be tolerated for a long period. After recovery and inspection, it was determined a joint seal had not been properly seated at the factory and seawater had seeped inside the buoy. CDIP technicians are evaluating options to address the repair.

Causeway:***Arctic Deep Draft Port – Modification Feasibility Study (MFS):**

The 116th U.S. Congress is still considering the Water Resources & Development Act (WRDA 2020) legislation. In the meantime, the Alaska Corps District is waiting for the federal share of the Preconstruction, Engineering & Design (PED) funds, in order to enter into a design agreement with the City at a 75/25 cost-share. The City's 25% is funded through a portion of a grant from the State of Alaska (19-DC-008), and has been set aside for this purpose.

- Anyone with questions on this project can call 907-304-1905 or email jbaker@nomealaska.org, and further info on the project study is located on the Port of Nome page at www.nomealaska.org.

***Sediment at Causeway Bridge:**

The Alaska Corps District, Operations Branch, has released the draft bid package for 2021-2024 Nome Harbor Maintenance Dredging to interested stakeholders and agencies for review and comment. Once final comments are considered and West Beach property access authorized, the project should be on the street in late Oct 2020.

Harbor:***Inner Harbor CAP 107 Study (Deepen/Widen the Inner Basin):**

Under our Work-in-Kind agreement with the Corps, the City received and opened three proposals on 27 Aug 2020 for sediment sampling and analysis of the Inner Harbor. Two of the three were well above the Corps' budgeted funds, with the remaining proposal not only in range, but also prepared to do the sampling before freeze up as desired. The Corps reviewed and approved the proposal, which the Council then awarded through resolution, with all contract documents executed. Kinnetic Labs, Inc. will perform the work during the first few weeks in October.

Concrete Launch Ramp Replacement Project:

*The project bid package will be rebid on 1 Oct 2020, with bids due by 5 Nov 2020, and the winning bid awarded through Council resolution on 9 Nov 2020.

Snake River Moorage & Vessel Haulout Facility:

The City submitted an application to the US Department of Transportation's BUILD Grant Program on 18 May 2020 to fund the development of an additional moorage facility within the Snake River, and alleviate the risks of mixing large and small vessels, resulting from significant overcrowding in the Small Boat Harbor. Nome Eskimo Community (NEC) signed on as a co-applicant to the grant and committed \$200K funds, to be matched to the \$300K in local funds being provided by the City as combined in-kind and cash.

Port Industrial Pad:***West Nome Tank Farm (Property Conveyance):**

The USAF responded to the City's comments and concerns relating to draft property conveyance documents on 2 Sep 2020. Although a number of the City's concerns were adequately addressed, a few remained that warranted clarification. The City attorney is drafting a response for the USAF's consideration.

Port Rd. Improvements (ADOT Project cost-shared with City/Port):

ADOT continues to advise that this project will be on schedule for the 2021 construction season. PDC Engineers is still working on the design and specs, with a draft set of documents anticipated to be shared soon.

*Asterisks reflect new project information.

Presented by:
Port Commission
Action Taken:
Yes 5 No 0
Abstain 0

CITY OF NOME, ALASKA

RESOLUTION NO. R-20-09-01

**A RESOLUTION AWARDING THE PORT OF NOME INNER HARBOR
ANALYTICAL SAMPLING OF DREDGE SEDIMENT TO
KINNETIC LABORATORIES, INC.**

WHEREAS, the City of Nome owns the Port & Harbor, which serves as the regional maritime hub facility for over fifty (50) western Alaska communities, transshipping fuel, cargo and gravel throughout the region during the ice-free season; and

WHEREAS, Nome's Inner Harbor has experienced an escalation in vessel congestion in the last eight (8) years, which has created significant operational inefficiencies in the transshipment of goods and services across the region and caused vessel overcrowding that has impacted subsistence activities; and

WHEREAS, the existing maneuvering area in the Inner Harbor is restricted by depth and limited maneuvering space, which is compounded by strong north winds pushing 2-4 feet of water out of the harbor, delaying commodity movement to the region; and,

WHEREAS, the City of Nome has executed a cost-share agreement with the U.S. Army Corps of Engineers (USACE) for a Continuing Authorities Program (CAP) Section 107 study to deepen and expand the existing federal dredge limits in the harbor, with a portion of the City's Work-In-Kind effort to include sediment sampling and analysis work per USACE guidelines; and


WHEREAS, a solicitation requesting fee proposals was issued on 7 August 2020 to perform sampling and analysis of sediment from the inner harbor, with responses due by 27 August 2020 that resulted in the receipt of 3 proposals, with Kinnetic Laboratories, Inc. deemed the lowest, responsible bidder at \$184,500.00; and,

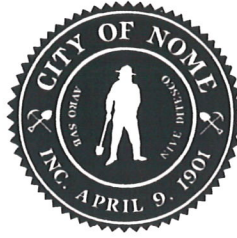
NOW, THEREFORE BE IT RESOLVED that the Nome Common Council awards the Harbor Analytical Sediment Sampling to Kinnetic Laboratories, Inc. for \$184,500.00.

APPROVED and **SIGNED** this 3rd day of September 2020.


JOHN HANDELAND, Mayor

ATTEST:


BRYANT HAMMOND, City Clerk



NOTICE OF INTENT TO AWARD

TO: Proposers of Record

PROJECT DESCRIPTION: PROFESSIONAL SERVICES TO CONDUCT
ANALYTICAL SAMPLING OF DREDGE SEDIMENT
PORT OF NOME, INNER HARBOR

The City of Nome has received and opened proposals on August 27, 2020 for the subject project. The City of Nome intends to award the project contract to Kinnetic Laboratories, Inc. for the Base Bid of \$184,500, subject to approval by the Nome Common Council at 7:00 PM on Monday, September 14, 2020.

Any proposer who believes the bid has been improperly awarded may file a protest no later than five (5) working days from the date of this Notice of Intent.

Dated this 28th day of August, 2020.

CITY OF NOME
OWNER

By

City Manager

Proposers of Record:

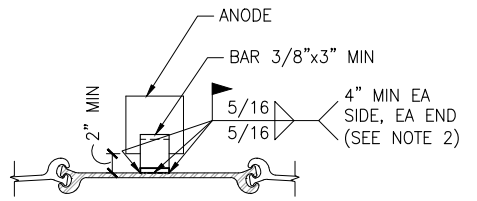
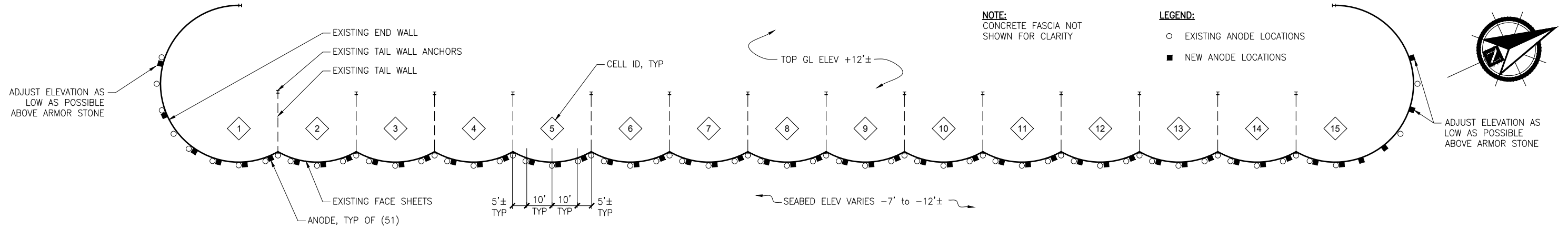
<u>Company</u>	<u>Representative</u>	<u>Contact Email</u>
Golder	Richard Mitchells	<i>Richard_Mitchells@golder.com</i>
Kinnetic Laboratories, Inc	Mark Savoie	<i>msavoie@kinneticlabs.net</i>
Shannon & Wilson	Kyle Brennan	<i>KLB@shanwil.com</i>

Cc: Brooks Chandler, City Attorney

ANALYTICAL SAMPLING OF DREDGE SEDIMENT - PORT OF NOME INNER HARBOR

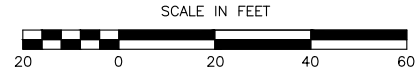
Plan Holder List

Company	Contact	Business Address	Email Address	Tel	Fax	Method Plans Obtained	Addenda Sent			Received Proposal Amount
						(Mail, Picked up at City office, Emailed by City, Plans Room)	001	002	003	
Plans Room		4831 Old Seward Hwy Suite 202, Anchorage, AK 99503	mail@theplansroom.com	907-563-2029	907-562-0956	Delivered by City (Bristol)	20-Aug			
AGC		3749 Bonita Street, Fairbanks, AK 99701	AGC Online Plans < agcplans@gmail.com >	907-452-1809		Delivered by City (Bristol)	20-Aug			
Golder	Rick Mitchells		Mitchells, Richard < Richard_Mitchells@golder.com >			Delivered by City (Bristol)	20-Aug			\$525,000
Shannon & Wilson	Kyle Brennan		Kyle Brennan < KLB@shanwil.com >			Delivered by City (Bristol)	20-Aug			\$369,300
R&M Consultants	Bob Pintner		bpintner@rmconsult.com			Delivered by City (Bristol)	20-Aug			
Kinnetic Laboratories, Inc.	Mark Savoie	704 West 2nd Avenue, Anchorage, AK 99501	msavoie@kinneticlabs.net	(907) 276-6178		Delivered by City (Bristol)	20-Aug			\$184,500
City of Nome	CLERK		Bryant Hammond (BHammond@nomealaska.org)	907-443-6611		Delivered by City (Bristol)	20-Aug			



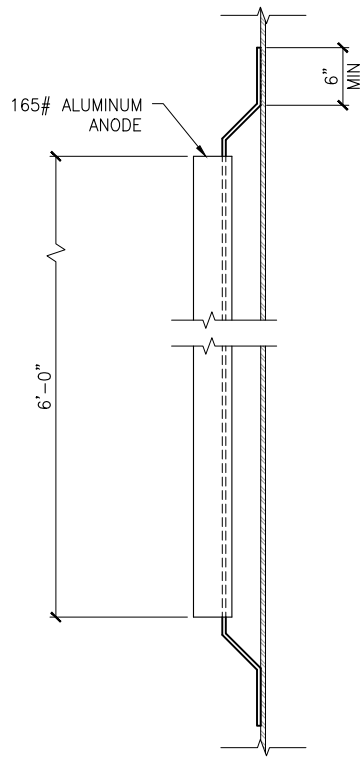
- NOTES:**
- (51) REQUIRED FOR 165# ANODE INSTALLATION.
 - WELD LENGTH OF 4" MIN REQUIRED PER LONG SIDE OF STEEL TAB/CORE. WELD FULL LENGTH ACROSS ENDS.

SMALL BOAT HARBOR FISH DOCK PLAN



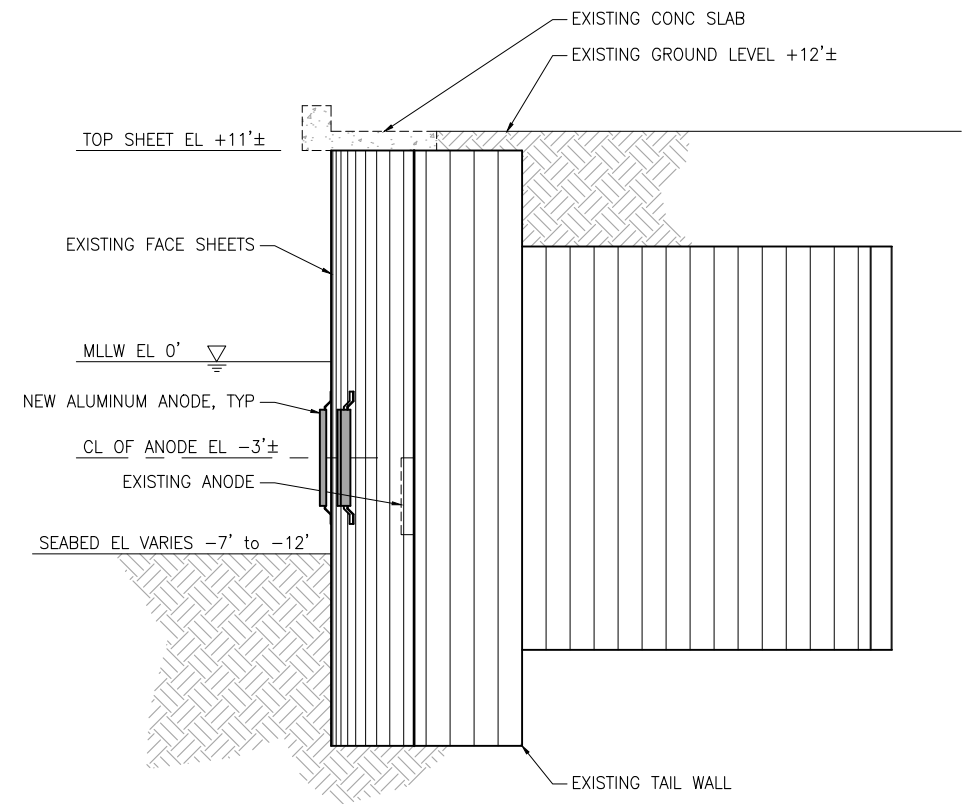
ALUMINUM ANODE DETAIL

NTS



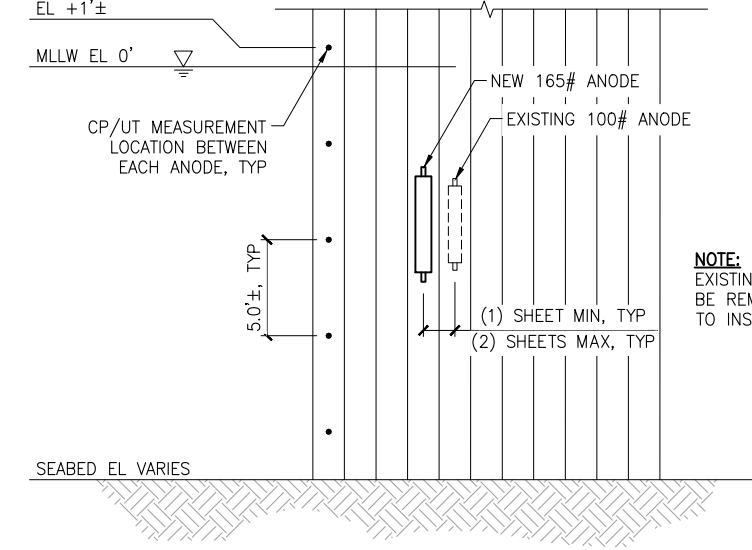
ALUMINUM ANODE ELEVATION

NTS



TYPICAL EXISTING TAIL WALL SECTION

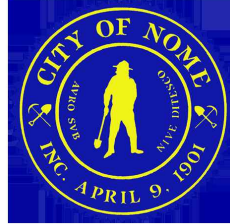
NTS



NOTE:
EXISTING ANODES SHALL BE REMOVED AS REQUIRED TO INSTALL NEW ANODES

ANODE REPLACEMENT DETAIL

NTS



**ISSUED FOR
CONSTRUCTION**
AUGUST 2020

PND Engineers, Inc. is not responsible for safety programs, methods or procedures of operation, or the construction of the design shown on these drawings. Where specifications are general or not called out, the specifications shall conform to standards of industry. Drawings are for use on this project only and are not intended for reuse without written approval from PND. Drawings are also not to be used in any manner that would constitute a detriment directly or indirectly to PND.

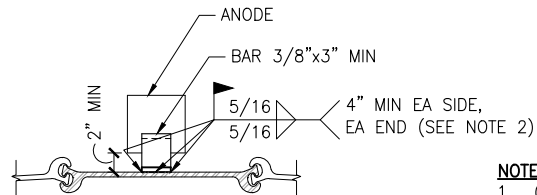
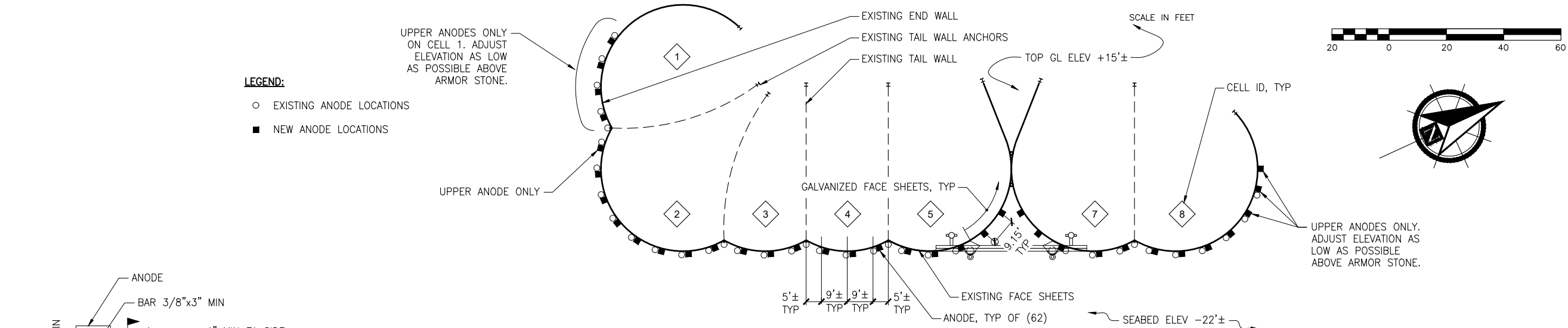
REV	DATE	DESCRIPTION



1506 West 36th Avenue
Anchorage, Alaska 99503
Phone: 907.561.1011
www.pndengineers.com
AK. LIC# AECC250

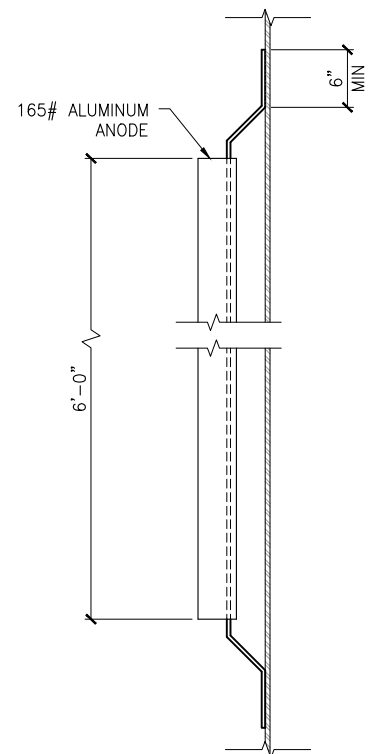


PROJECT:		PORT OF NOME ANODE REPLACEMENT	
TITLE:		SMALL BOAT HARBOR FISH DOCK	
DESIGNED BY: BH	DATE: 8/31/2020	SHEET NO:	1 OF 3
CHECKED BY: DDH	PROJECT NO: 201128		

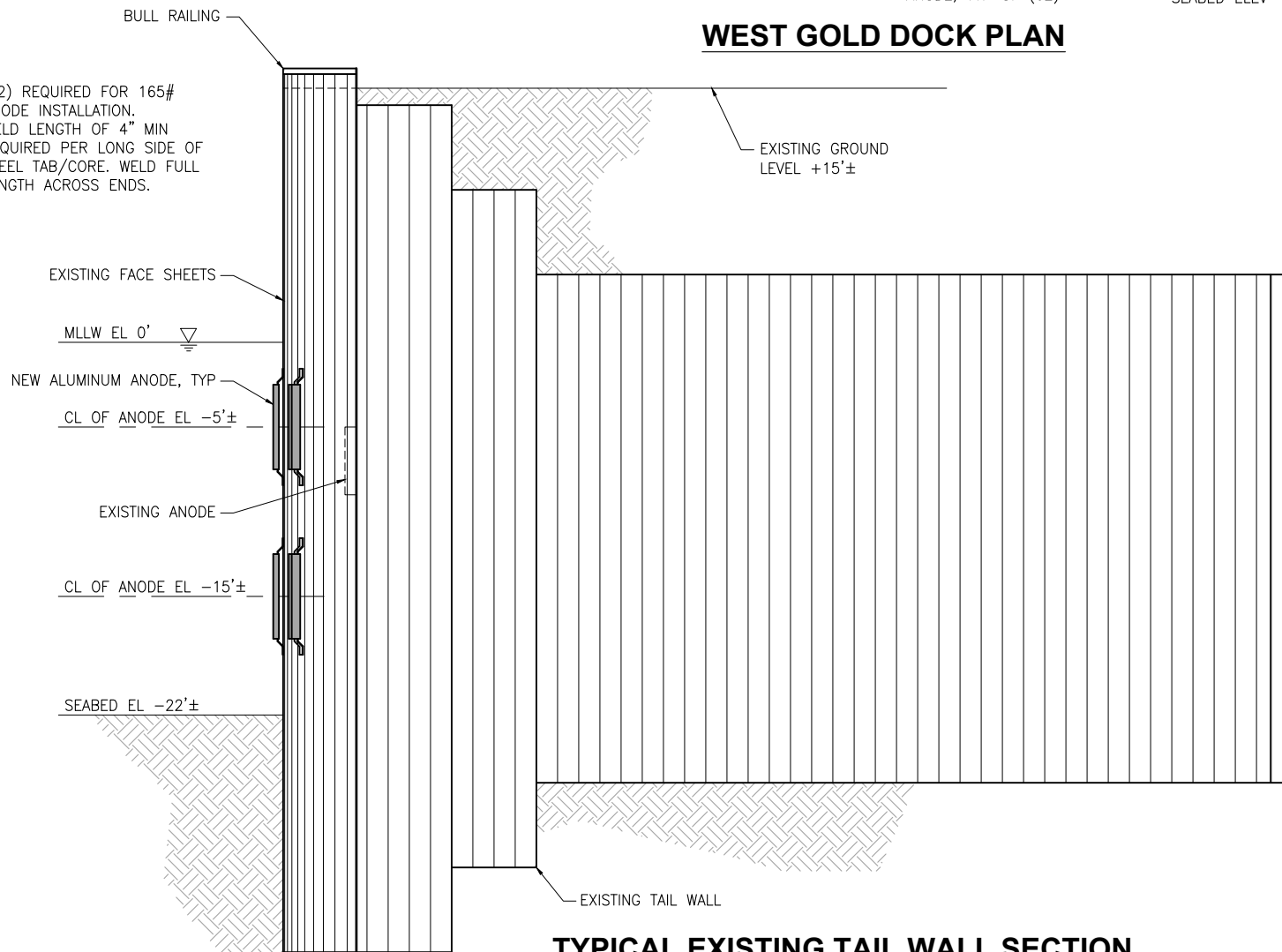


ALUMINUM ANODE DETAIL
NTS

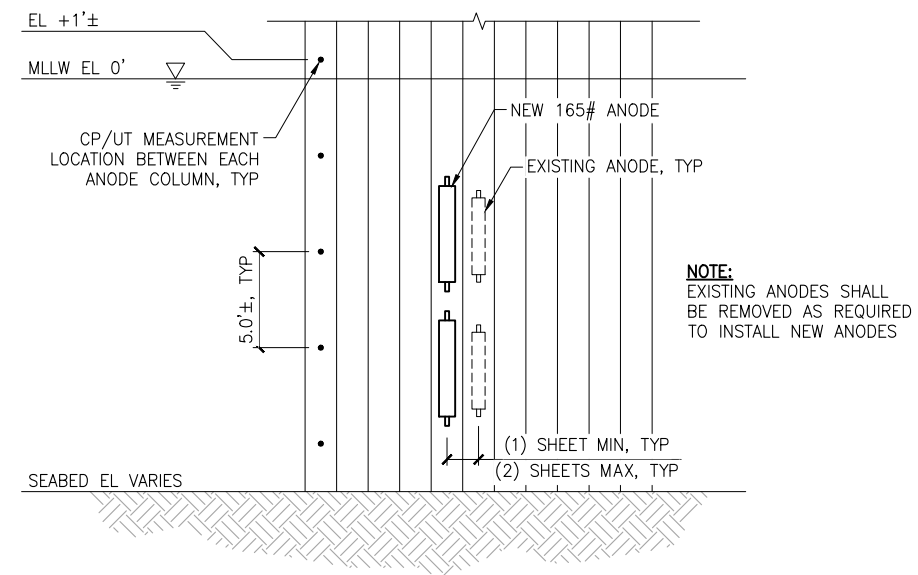
- NOTES:**
- (62) REQUIRED FOR 165# ANODE INSTALLATION. WELD LENGTH OF 4" MIN REQUIRED PER LONG SIDE OF STEEL TAB/CORE. WELD FULL LENGTH ACROSS ENDS.
 -



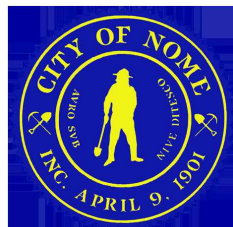
ALUMINUM ANODE ELEVATION
NTS



TYPICAL EXISTING TAIL WALL SECTION
NTS



ANODE REPLACEMENT DETAIL
NTS



**ISSUED FOR
CONSTRUCTION**
AUGUST 2020

PND Engineers, Inc. is not responsible for safety programs, methods or procedures of operation, or the construction of the design shown on these drawings. Where specifications are general or not called out, the specifications shall conform to standards of industry. Drawings are for use on this project only and are not intended for reuse without written approval from PND. Drawings are also not to be used in any manner that would constitute a detriment directly or indirectly to PND.

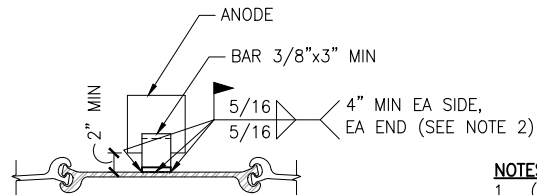
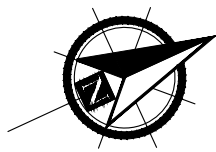
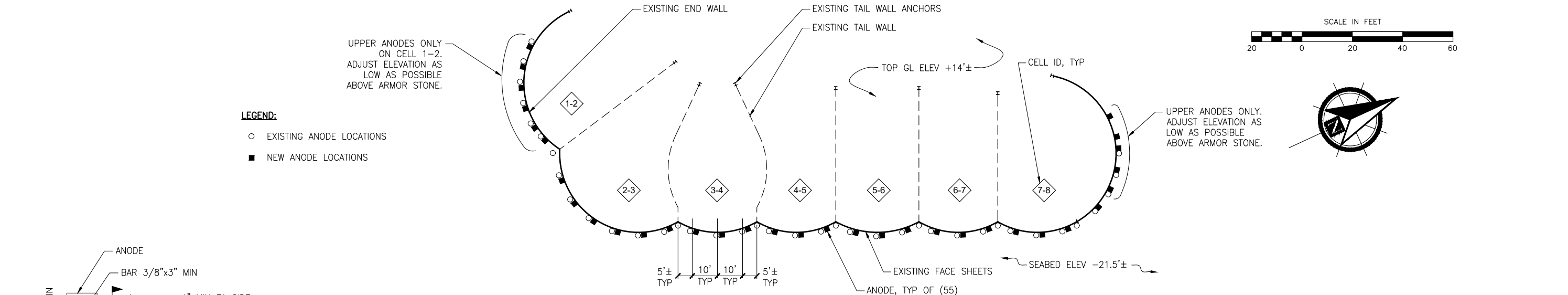
REV	DATE	DESCRIPTION



1506 West 36th Avenue
Anchorage, Alaska 99503
Phone: 907.561.1011
www.pndengineers.com
AK. LIC# AECC250

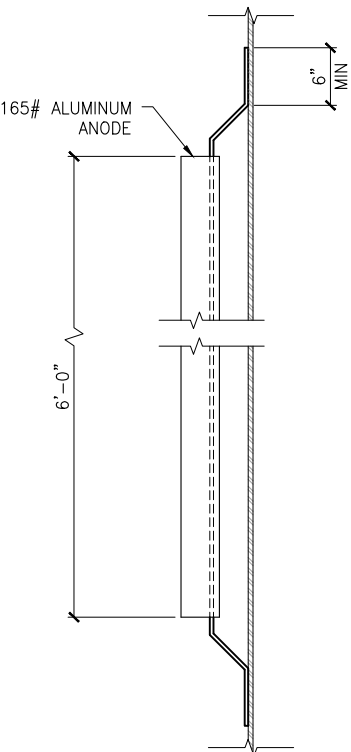


PROJECT:			
PORT OF NOME ANODE REPLACEMENT			
TITLE:			
WEST GOLD DOCK			
DESIGNED BY:	BH	DATE:	8/31/2020
CHECKED BY:	DDH	PROJECT NO:	201128
SHEET NO:			2 OF 3

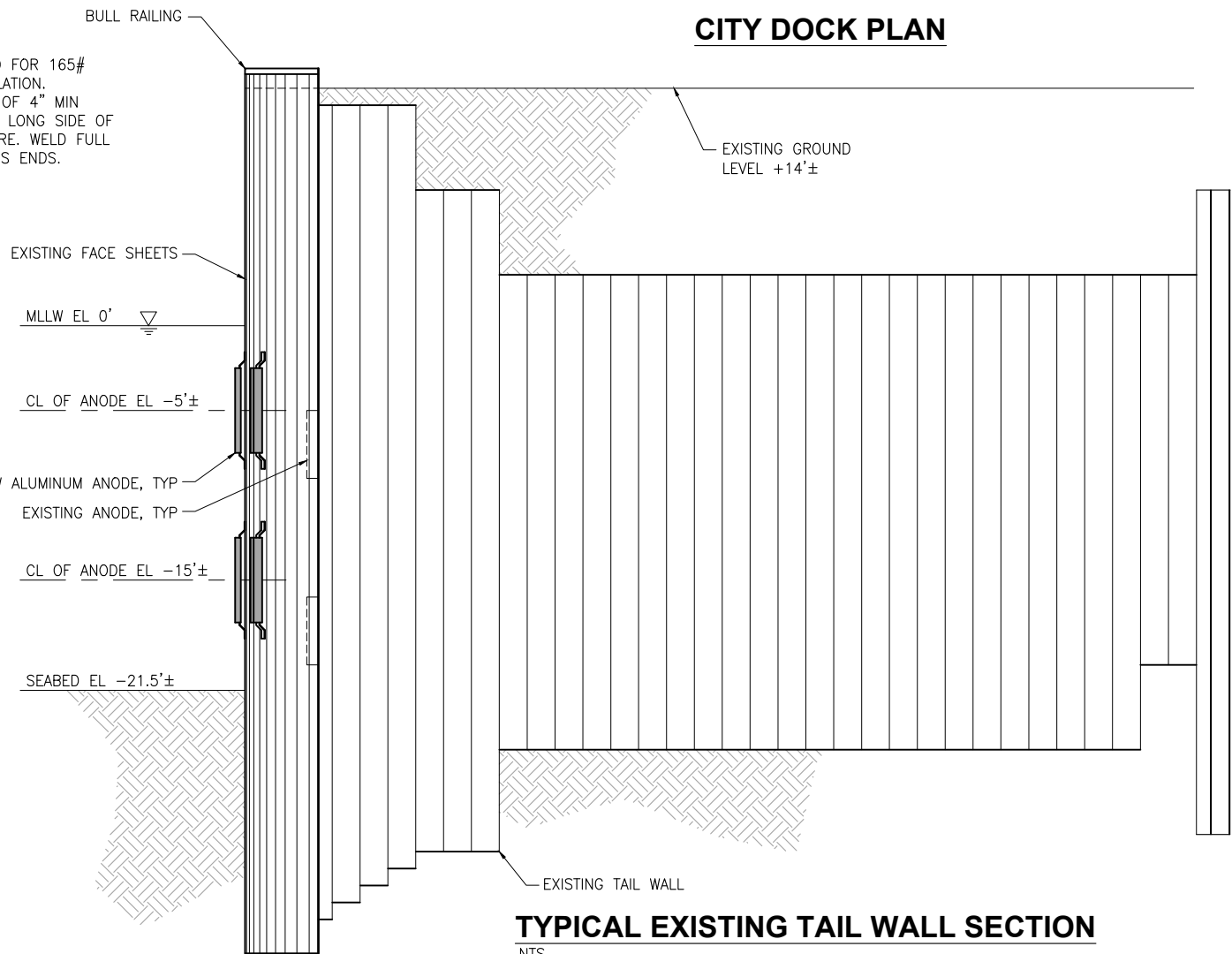


ALUMINUM ANODE DETAIL
NTS

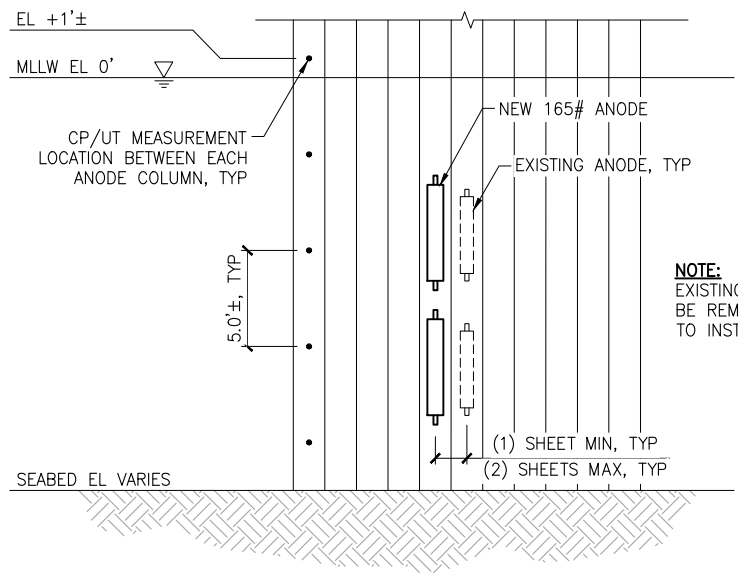
- NOTES:
- (55) REQUIRED FOR 165# ANODE INSTALLATION.
 - WELD LENGTH OF 4" MIN REQUIRED PER LONG SIDE OF STEEL TAB/CORE. WELD FULL LENGTH ACROSS ENDS.



ALUMINUM ANODE ELEVATION
NTS

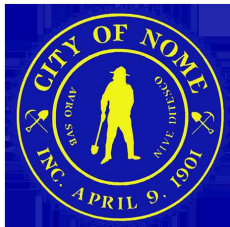


TYPICAL EXISTING TAIL WALL SECTION
NTS



NOTE:
EXISTING ANODES SHALL BE REMOVED AS REQUIRED TO INSTALL NEW ANODES

ANODE REPLACEMENT DETAIL
NTS



ISSUED FOR
CONSTRUCTION
AUGUST 2020

PND Engineers, Inc. is not responsible for safety programs, methods or procedures of operation, or the construction of the design shown on these drawings. Where specifications are general or not called out, the specifications shall conform to standards of industry. Drawings are for use on this project only and are not intended for reuse without written approval from PND. Drawings are also not to be used in any manner that would constitute a detriment directly or indirectly to PND.

REV	DATE	DESCRIPTION



1506 West 36th Avenue
Anchorage, Alaska 99503
Phone: 907.561.1011
www.pndengineers.com
AK. LIC# AECC250



PROJECT:		PORT OF NOME ANODE REPLACEMENT	
TITLE:		CITY DOCK	
DESIGNED BY:	BH	DATE:	8/31/2020
CHECKED BY:	DDH	PROJECT NO:	201128
SHEET NO:		3 OF 3	



AUGUST 10, 2020

PROPOSAL FOR THE PORT OF NOME

We are pleased to offer you the enclosed cost proposal, based on your verbal Scope of Work, dated July 2020 to include the following:

~~Item 1~~

~~Drain down the 8" cargo pipeline as necessary and Install new isolation kit between the city flange and Crowley's valve located adjacent to the CMS pump house, purchase two each isolation kits with gasket, Mylar bolt covers and fiber washers once the CMS pipe support is remove from the expansion joint/ flexible pipe section. The Isolation kits were purchased in July and are in hand.~~

Isolation kit	Labor	Room & Board	ODC	
	\$2,000.00	\$500.00	\$1,306.35	\$3,806.00

~~Item 2~~

~~Cut out two 3/8" brackets and attach one bracket to each of the two 6" cargo pipelines spools flange bolts so the cathodic protection wires can be cad welded to the brackets instead of the spools.
Cover the drip pan with treated 3/4" plywood, with welded in 2"x2" angle iron supports under pig catcher adjacent to BFI~~

Cathodic	Labor	Room & Board	ODC	
	\$1,000.00	\$250.00	\$50.00	\$1,300.00
Drip pan cover	\$1,000.00	\$250.00	\$500.00	\$1,750.00

plywood

Item 3

Rebuild the 6" double block and bleed valve at the port with new slips as necessary, gaskets, bolts, boots and sand blast and paint. Remove valve from header and rebuild at tent building shop, blank the port header out with blind flange until we reinstall the valve.

Rebuild 6" Header Valve	Labor	Room & Board	ODC	
	\$3,000.00	\$750.00	\$1,810.00	\$5,560.00

For this Proposal, our estimated cost is ~~\$ 12,416.00~~

SEAKERS, Inc.

P.O. BOX 871725 WASILLA, AK 99687 POST OFFICE STREET ADDRESS 401 N MAIN ST # 871725 WASILLA ALASKA, 99687
E-mail address is seakers@gci.net CELL (907) 224-1606, OFFICE (907) 229-6023 FAX (907) 376-9326

Page - 1 -



ASSUMPTIONS:

1. All fuel transfers to be completed by others except as noted.
2. Client to supply at no charge to Contractor: all power, all fuel and lubricants, site security, disposal of all generated wastes, including trash debris and all other wastes.
3. We are not responsible for costs incurred due to timeliness of services and materials provided by others, or for the appropriateness of services and materials provided by others.
4. Our terms are net 30 days from date of invoice unless other arrangements are made in advance.

Exclusions:

- 1) Any Permitting required.
- 2) Payment and performance bonds.
- 3) Any design cost.
- 4) Any electrical work.
- 5) Any cathodic protection work.

Commercial Clarifications

Commercial modifications are to be in accordance with the Owner/SEAKERS, Inc. contract agreement or purchase order as applicable. Our pricing is based on general liability standard insurance coverage, with Port of Nome required project specific limits of \$5m.

Taxes

The above pricing excludes state, county, or city sales or use taxes. These and any other gross receipt taxes, value added taxes or similar taxes imposed upon SEAKERS Inc. or customer under this proposal are excluded. If applicable, they will be invoiced at our direct cost plus 20%, as additions to the pricing quoted in this proposal.

Payment Schedule

SEAKERS, Inc. proposes to invoice 100% payable at job completion.

Offered by: 

Name

Date

Todd C. Fisher
Chief Operations Officer
SEAKERS, Inc.

Accepted by: _____

Name

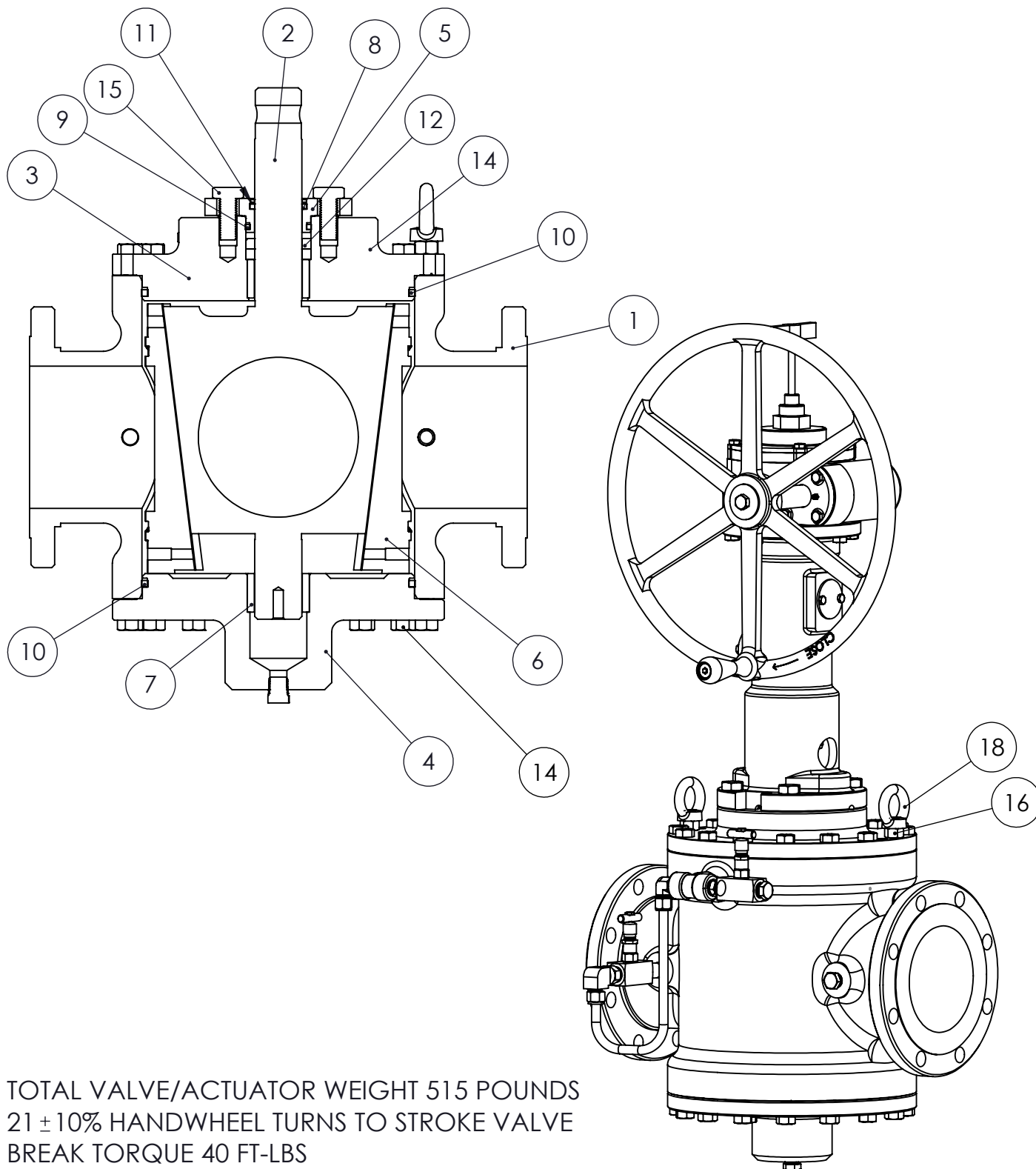
Date

Lucas Stott's
Harbormaster
Port of Nome


SEAKERS, Inc.

P.O. BOX 871725 WASILLA, AK 99687 POST OFFICE STREET ADDRESS 401 N MAIN ST # 871725 WASILLA ALASKA, 99687
E-mail address is seakers@gci.net CELL (907) 224-1606, OFFICE (907) 229-6023 FAX (907) 376-9326

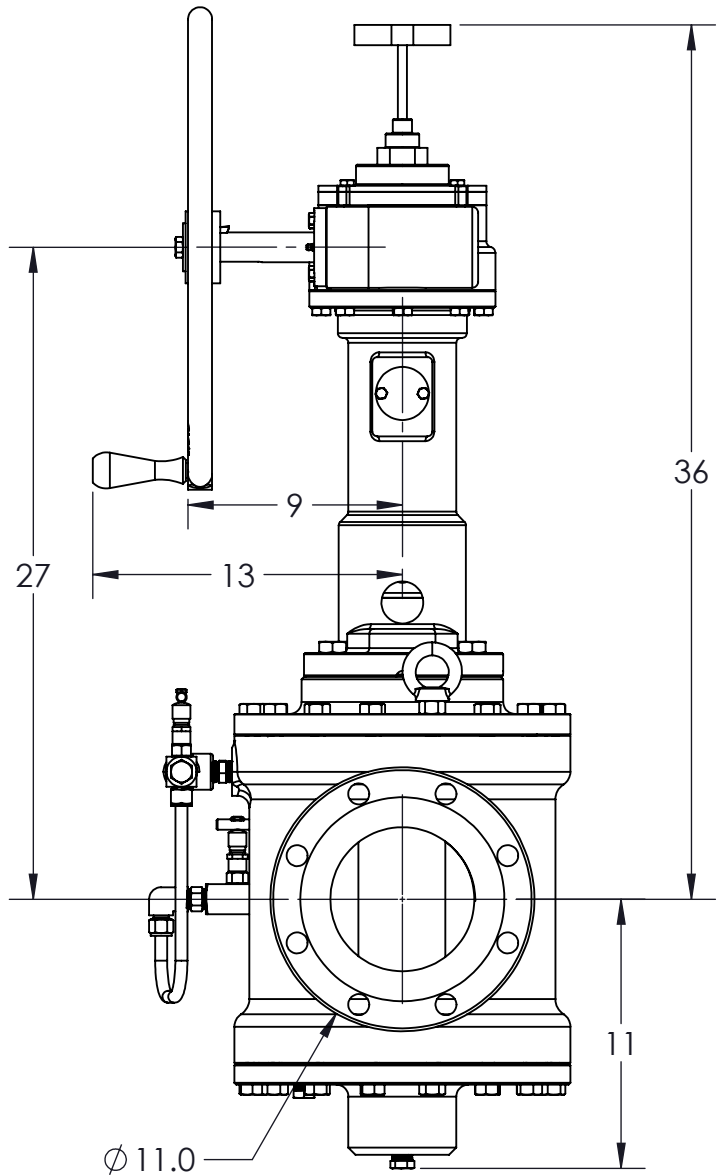
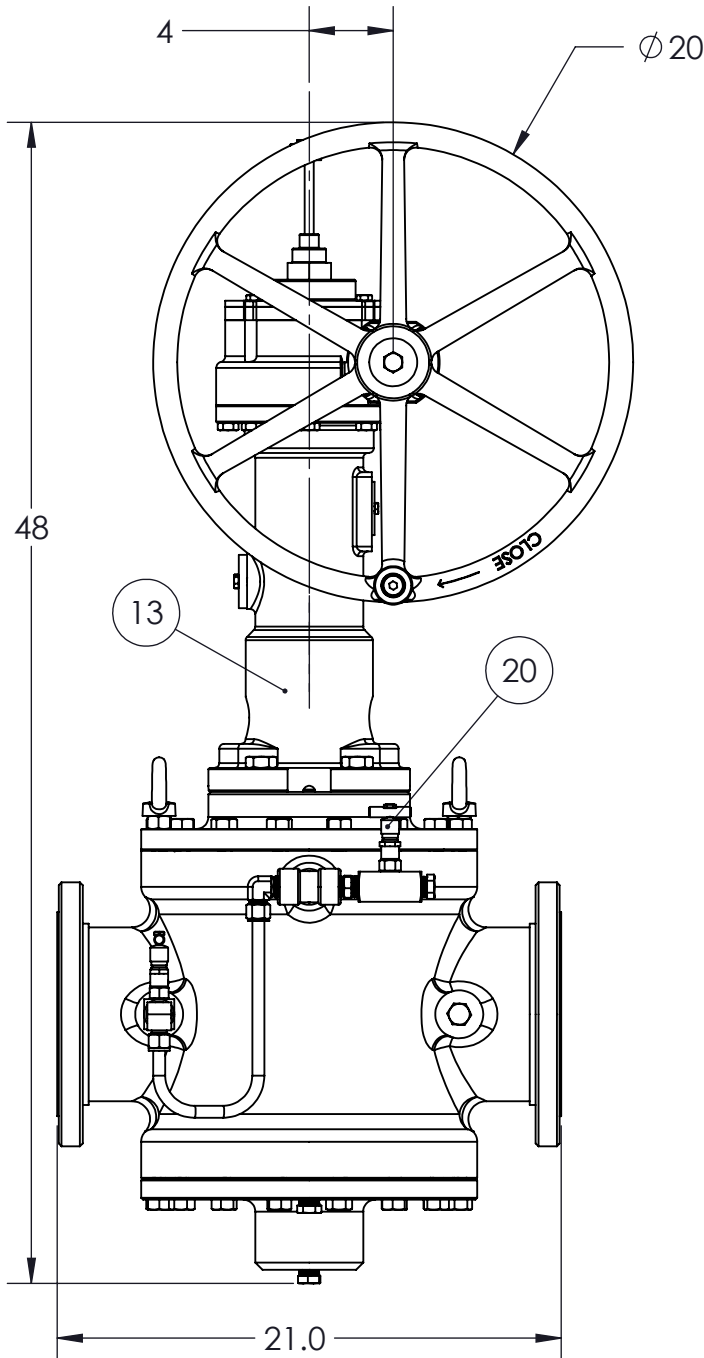
Page - 2 -



TOTAL VALVE/ACTUATOR WEIGHT 515 POUNDS
 21 ± 10% HANDWHEEL TURNS TO STROKE VALVE
 BREAK TORQUE 40 FT-LBS
 CV = 5000 GPM/1 PSI PRESSURE DROP WATER

THIS DOCUMENT CONTAINS CONFIDENTIAL INFORMATION WHICH IS THE PROPERTY OF FRANKLIN VALVE, LP. THIS DOCUMENT AND THE INFORMATION WHICH IT CONTAINS SHALL NOT BE USED, EXPLOITED OR SOLD WITHOUT THE EXPRESS WRITTEN PERMISSION OF FVS. SHALL NOT BE COPIED OR OTHERWISE REPRODUCED IN WHOLE OR IN PART AND SHALL NOT BE REVEALED OR DISCLOSED TO THIRD PARTIES. THIS DOCUMENT SHALL REMAIN THE PROPERTY OF FV AND SHALL BE RETURNED ON DEMAND.	UNLESS OTHERWISE SPECIFIED			500 Northpark Central Drive Suite 100 Houston, Texas, 77073				PH. (713)-812-7100 FAX (713)-686-5158 www.franklinvalve.com	
	TOLERANCES		SURFACE FINISH	DO NOT SCALE DWG		TITLE 6" 150#HFB DURASEAL D611			
	.X	±.1	500						
	.XX	± .02	250	DWN BY/DATE: DT 07/08/20		SIZE	DRAWING NUMBER		SHEET 1 OF 3
	.XXX	± .005	125	APV'D BY/DATE:		A	SK-104HFB-00		REV
	ANGLES	± 1/2°	N/A	WEIGHT:					A01

TO REMOVE BONNET AND PLUG 26 " MINIMUM CLEARANCE REQUIRED ABOVE VALVE
TO REMOVE LOWER PLATE AND SLIPS 15" MINIMUM CLEARANCE REQUIRED BELOW VALVE



THIS DOCUMENT CONTAINS
CONFIDENTIAL INFORMATION
WHICH IS THE PROPERTY OF
FRANKLIN VALVE, LP. THIS
DOCUMENT AND THE INFORMATION
WHICH IT CONTAINS SHALL NOT BE
USED, EXPLOITED OR SOLD WITHOUT
THE EXPRESS WRITTEN PERMISSION
OF FVS. SHALL NOT BE COPIED OR
OTHERWISE REPRODUCED IN WHOLE
OR IN PART AND SHALL NOT BE
REVEALED OR DISCLOSED TO THIRD
PARTIES. THIS DOCUMENT SHALL
REMAIN THE PROPERTY OF FV AND
SHALL BE RETURNED ON DEMAND.

UNLESS OTHERWISE SPECIFIED

ALL DIMENSIONS ARE IN INCHES.
ALL EDGE BREAKS .03 X 45° OR .03R. ALL
DIAMETERS CONCENTRIC WITH .005 T.I.R.
ALL STENCILING TO BE LOW STRESS TYPE

500 Northpark Central Drive
Suite 100
Houston, Texas, 77073



PH. (713)-812-7100
FAX (713)-686-5158
www.franklinvalve.com

TOLERANCES		SURFACE FINISH
.X	±.1	500
.XX	± .02	250
.XXX	± .005	125
ANGLES	± 1/2°	N/A

DO NOT SCALE DWG

DWN BY/DATE: DT 07/08/20

APV'D BY/DATE:


WEIGHT:

TITLE
6" 150#HFB DURASEAL D611

SIZE A	DRAWING NUMBER SK-104HFB-00	SHEET 2 OF 3 REV. A01
------------------	---------------------------------------	---

SOLIDWORKS

ITEM NO.	PART NUMBER	PART	MATERIAL	QTY.
1	D-1-104HFB	BODY	ASTM A216 WCB CHROME PLATED ID	1
2	D-2-405F	PLUG	ASTM A216 WCB NICKEL PLATED	1
3	D-3-104HFB	BONNET	ASTM A216 WCB	1
4	D-4-104HFB	LOWER PLATE	ASTM A216 WCB	1
5	D-5-104	PACKING GLAND	ASTM A182 F316	1
6	D-18-405F	SLIP	DUCTILE IRON	2
7	D-19-401	STEM BUSHING	BRONZE	2
8	D-31-329	O-RING 329	VITON	1
9	D-31-332	O-RING 332	VITON	1
10	D-31-451	O-RING 451	VITON	2
11	D-32-329	BACKUP RING 329	TEFLON	1
12	D-34-401	STEM PACKING	DIE FORMED GRAPHITE	2
13	SK-O-401-00	401 OPERATOR	SEE SK-O-401-00	1
14	HEX CAP SCREW 5/8-11X1.75	HEX CAP SCREW 5/8-11X1.75	B7	30
15	HEX CAP SCREW 3/4-10UNC X 1.75	HEX CAP SCREW 3/4-10UNC X 1.75	B7	2
16	5/8-11 NUT	5/8-11 NUT	B7	2
17	5/8-11 X 3.00 STUD	5/8-11 X 3.0 STUD	B7	2
18	EYE NUT, 5/8"-11UNC	EYE NUT, 5/8"-11UNC	STEEL	2
19	76-5000	1/2NPT HEX PLUG	CS	2
20	D-DTR-005	1/2" CS DTR SYSTEM	SEE D-DTR-005	1

THIS DOCUMENT CONTAINS CONFIDENTIAL INFORMATION WHICH IS THE PROPERTY OF FRANKLIN VALVE, LP. THIS DOCUMENT AND THE INFORMATION WHICH IT CONTAINS SHALL NOT BE USED, EXPLOITED OR SOLD WITHOUT THE EXPRESS WRITTEN PERMISSION OF FVS. SHALL NOT BE COPIED OR OTHERWISE REPRODUCED IN WHOLE OR IN PART AND SHALL NOT BE REVEALED OR DISCLOSED TO THIRD PARTIES. THIS DOCUMENT SHALL REMAIN THE PROPERTY OF FV AND SHALL BE RETURNED ON DEMAND.	UNLESS OTHERWISE SPECIFIED		500 Northpark Central Drive Suite 100 Houston, Texas, 77073		PH. (713)-812-7100 FAX (713)-686-5158 www.franklinvalve.com					
	ALL DIMENSIONS ARE IN INCHES. ALL EDGE BREAKS .03 X 45° OR .03R. ALL DIAMETERS CONCENTRIC WITH .005 T.I.R. ALL STENCILING TO BE LOW STRESS TYPE									
	TOLERANCES		SURFACE FINISH	DO NOT SCALE DWG	TITLE 6" 150#HFB DURASEAL D611					
	.X	±.1	500							
	.XX	± .02	250				DWN BY/DATE: DT 07/08/20	SIZE A	DRAWING NUMBER SK-104HFB-00	SHEET 3 OF 3
	.XXX	± .005	125				APV'D BY/DATE:			REV. A01
	ANGLES	± 1/2°	N/A				WEIGHT:			

SOLIDWORKS

Puget Sound Pipe & Supply Co. #3
ANCHORAGE, AK 99501
907-277-7473 Fax 907-277-9656

Quotation

QUOTE DATE	QUOTE NUMBER
06/16/14	S1482373
ORDER TO: Puget Sound Pipe & Supply Co. ANCHORAGE, AK 99501 907-277-7473 Fax 907-277-9656	PAGE NO. 1

QUOTE TO:
CITY OF NOME
NOME, AK 99762

SHIP TO:
CITY OF NOME
NOME, AK 99762

CUSTOMER NUMBER		CUSTOMER ORDER NUMBER	RELEASE NUMBER	SALESPERSON	
21342		JOY BAKER	cash sale acct	MATT LIENHART	
WRITER		SHIP VIA	TERMS	SHIP DATE	FREIGHT ALLOWED
MARK LIENHART		WC WILL CALL	Net Due On Invoice	06/16/14	No
REL #	ORDER QTY	DESCRIPTION		UNIT PRICE	NET AMOUNT
	1ea	6" 150 FLANGED DOUBLE BLOCK & BLEE PLUG VALVE, WCC BODY, FULL PORT, VITON GF SEATS & VITON SEALS, GEAR OPERATED WITH SIDE MOUNT HAND WHEEL, COMPLETE WITH DTR, GENERAL TWIN SEAL, P/N C911-625TS-VGF/V-DTR ***** ALLOW 28-WEEKS TO SHIP ARO. PRICING IS FOB ANCHORAGE ALLOW 30-WEEKS ARO. THANK YOU, MARK LIENHART 263-6616		19548.90/ea	19548.90
TAXES NOT INCLUDED					

*** This is a quotation ***

All PO's for random length pipe must allow
quantities plus or minus 10% or one length
Prices are firm for 30 days and subject to
change without notice after 30 days.

Applicable taxes extra!

Subtotal	19548.90
S&H CHGS	0.00
Amount Due	19548.90