



City of Newberry City Hall Conceptual Design Workshop

July 27, 2021
7:00 p.m.

25440 West Newberry Road
Newberry, Florida 32669

MINUTES

CALL TO ORDER

Mayor Marlowe called the meeting to order at 7:00 p.m.

APPROVAL OF AGENDA

Mayor Marlowe asked for approval of the agenda.

**Motion made by Commissioner Farnsworth to
approve the agenda.**

Seconded by Commissioner Mazon.

**Voting Yea: Commissioner Coleman, Commissioner
Clark, Commissioner Farnsworth, and Commissioner
Mazon.**

MOTION PASSED 4-0

QUORUM CHECK

Mayor

Jordan Marlowe

Commissioners

Ricky Coleman

Mark Clark

Monty Farnsworth

Tony Mazon

City Manager

Mike New

City Clerk

Judy Rice

Staff:

Fire Chief

Ben Buckner

Director of Finance and Administration

Dallas Lee

Director of Planning and Economic Development

Bryan Thomas

Principal Planner

Wendy Kinser-Maxwell

Absent:

Commissioner

Tim Marden

City Attorney

Scott Walker

AGENDA ITEMS

1. City Hall Conceptual Design.

Mr. Barnett Chenault, SVM Architect, presented a PowerPoint presentation to the commission showing three different concepts, Exhibits A, B, and C.

Discussion ensued.

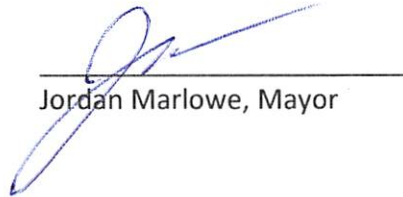
COMMENTS

Commissioner Mazon and Mayor Marlowe made comments.

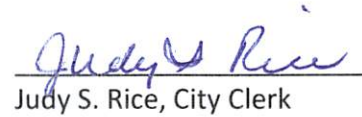
MEETING ADJOURNMENT

Meeting adjourned at 8:51 p.m.

Signed and dated this 9th day of August 2021.

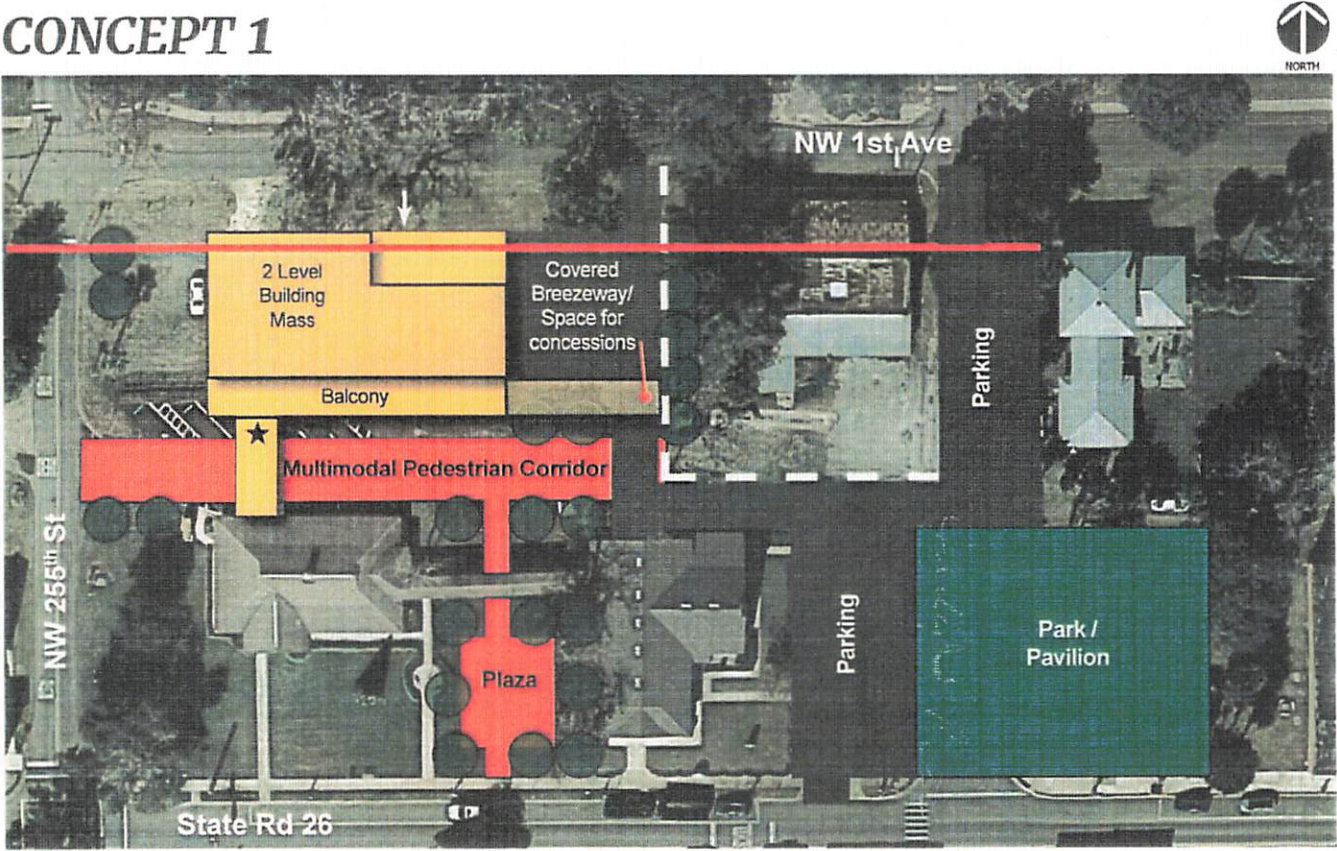


Jordan Marlowe, Mayor



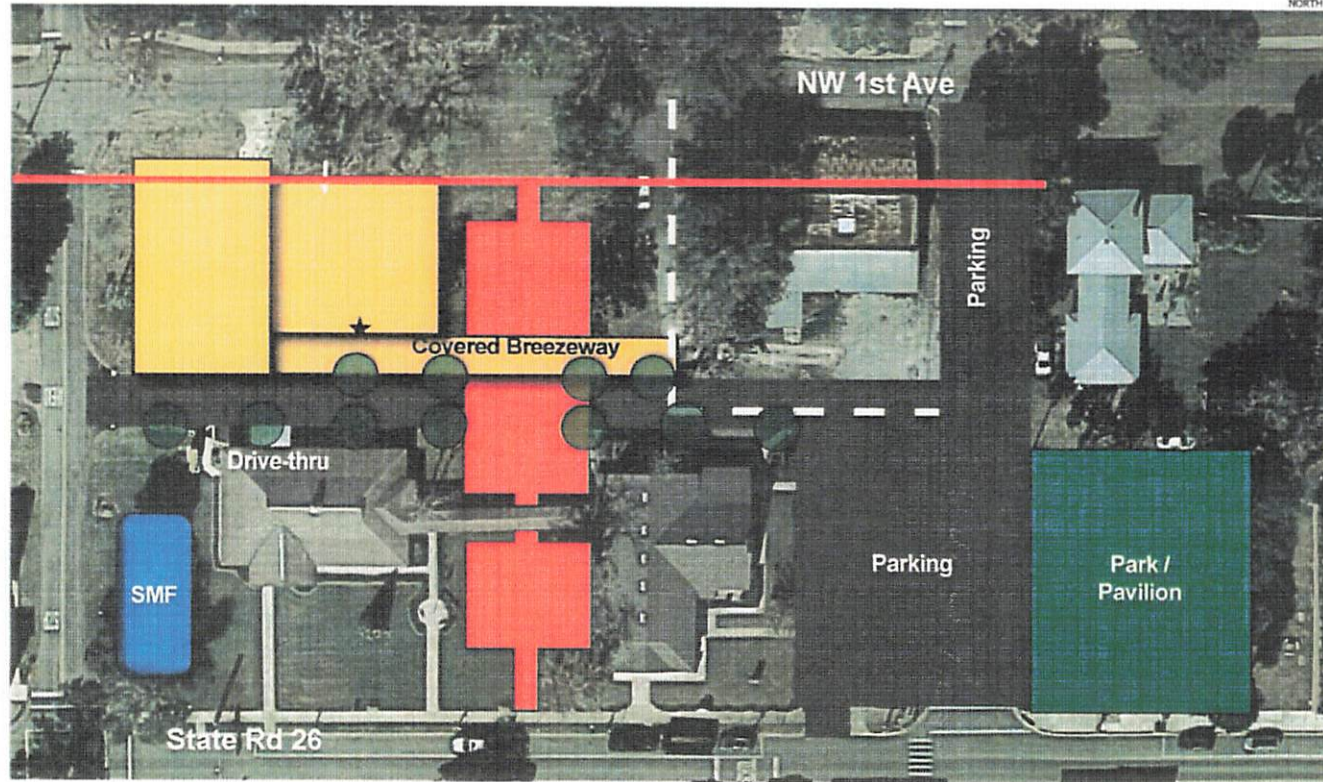
Judy S. Rice, City Clerk

CONCEPT 1



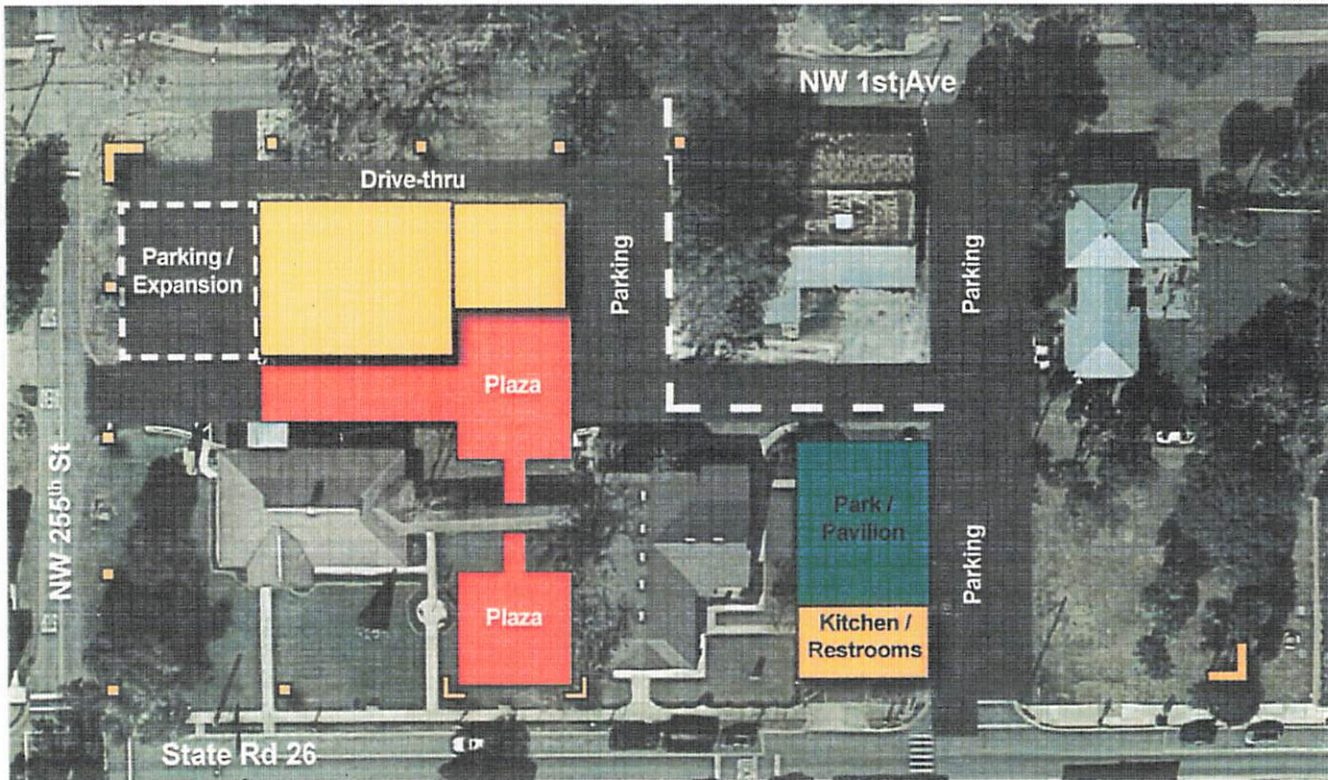
- Bldg on 1st and 2nd floor: ±19,000 sf
- Parking lot: ±30 parking spaces
- Covered connection to existing City Hall building
- Stormwater buried in order to accommodate surface parking

CONCEPT 2



- 2 floors: approx. 20,000 sf
- Parking lot: ± 45 parking spaces
- Parking lot provides room for future expansion
- Surface stormwater pond also serve as aesthetic wetland feature
- Covered arcade adjacent to parking lot provides vendor space for farmer's market and other events

CONCEPT 3



- 1st floor building: 15,000 sf
- Parking lot: ±30 parking spaces
- Future expansion: 10,000 sf
- Stormwater buried
- Perimeter defined with columns / arbors to define character of City Hall with material and landscaping
- Drive-thru service lane on north side of building
- Commission meeting room with view to south Plaza