



# PARKS & RECREATION COMMISSION REGULAR VIDEO MEETING

## Thursday, March 2, 2023 at 5:00 PM

### COMMISSIONERS:

Chair Jodi McCarthy  
Vice Chair Peter Struck  
Commissioners: Don Cohen,  
Paul Burstein, Sara Marxen,  
Rory Westberg, Ashley Hay

### LOCATION & CONTACT

Zoom Meeting  
Phone: 206.275.7600 | [www.mercerisland.gov](http://www.mercerisland.gov)

*We strive to create an inclusive and accessible experience. Those requiring accommodation for meetings should notify the Staff Liaison's Office 3 days prior to the meeting at 206.275.7870 or by emailing [ryan.daly@mercerisland.gov](mailto:ryan.daly@mercerisland.gov).*

The virtual meeting will be broadcast live on Zoom and recorded and saved on the City Council's [YouTube Channel](#)

**Registering to Speak:** Individuals wishing to speak live during Appearances will need to register their request with the staff liaison at **206.275.7861** or [email](#) and leave a message before 4 PM on the day of the Commission meeting. Please reference "Appearances" on your correspondence and state if you would like to speak either in person at Mercer Island Community & Event Center or remotely using Zoom. Each speaker will be allowed three (3) minutes to speak.

**Join by Telephone at 5:00 PM:** To listen to the meeting via telephone, please call **253.215.8782** and enter Webinar ID **825 9108 6996** and Password **896196** when prompted.

**Join by Internet at 5:00 PM:** To watch the meeting over the internet via your computer, follow these steps:

- 1) Click [this link](#)
- 2) If the Zoom app is not installed on your computer, you will be prompted to download it.
- 3) If prompted for Webinar ID, enter **825 9108 6996** and Password **896196**

**Join in person at Mercer Island Community & Event Center at 5:00 PM:** Mercer Island Community & Event Center  
8236 SE 24<sup>th</sup> Street.

### CALL TO ORDER & ROLL CALL - 5:00 PM

### PUBLIC APPEARANCES

### DEPARTMENT REPORT

1. Department Report

### REGULAR BUSINESS HYPERLINK "appIS80d34e03b253455db0ca10b38419e40a"

2. [Approve the minutes of the February 2, 2023 Regular Meeting](#)  
**Recommended Action:** [Approve minutes](#)
3. [Aubrey Davis Park Trail Safety Improvement Project 30% Design](#)  
**Recommended Action:** [Ask questions of panelists; discuss design options presented; consider motion\(s\) as proposed](#)
4. [Luther Burbank Park Sport Courts Renovation](#)  
**Recommended Action:** [Approve the recommendation to amend the project scope to convert a third Luther Burbank tennis court to pickleball use.](#)

### OTHER BUSINESS

5. [PRC 2023 Planning Schedule Update](#)

6. [Commissioner Reports](#)

[ADJOURN](#)

# City of Mercer Island

## Parks and Recreation Commission

### Department Report

March 3, 2023





# Staffing Updates

- Tom Flynn promoted to Parks Maintenance Foreman
- Jordan Fischer has come back as our Volunteer Coordinator
- Alex Lee (MICEC)- New hire as Recreation Facilities Supervisor



Tom



Jordan



Alex

Now Hiring:

<https://www.governmentjobs.com/careers/mercerisland>





# Island Lanterns @ Mercerdale

- Lantern kits were made available to the community beginning in January and City Staff and volunteers installed the community created lanterns at Mercerdale Park on Feb. 25.
  - Due to construction impacts, the display was moved from its planned location.
- The lanterns will be up through the end of April (and depending on weather, wind is not good)
- For those who didn't get their lanterns hung last weekend, you can drop them off at the MICEC and we are happy to hang them for you.
- Thank you to MIVAL, ArtsWA, and the National Endowment for the Arts for supporting this project.
- Visit [www.mercerisland.gov/islandlanterns](http://www.mercerisland.gov/islandlanterns) for details.

Item 1.



# Good News: Luther Burbank Docks Project

- Last week City staff received notification the State's Recreation and Conservation Office (RCO) regarding a grant request for the Luther Burbank Dock Reconfiguration Project
- The project ranked #4 in priority out of 14 projects.
- This ranking puts the project in a strong position to receive the \$1 million for new dock construction.
- The comprehensive renovation of the docks is scheduled to start this year and be completed in 2024.
- To date, staff anticipates funding across (3) State grants to total \$3 million for this project. (Pending passage of the state budget)
- The total project cost is estimated at \$7.5 million.

For more information visit:  
<https://letstalk.mercergov.org/lbdock>





# Calling All Mercer Island Artists

- The Arts Council is inviting local amateur and professional artists to enter a competition for a design highlighting Island events.
- This design will be premiered at Summer Celebration 2023, as the event shirt(s) and used for various merchandise options throughout the year.
- Designs should reflect the spirit of Mercer Island, love for the community and what Mercer Island means to the artist.
- Originality and creativity are paramount.
- Deadline for submissions is April 15.
- For full details, rules, and guidelines visit [www.mercerisland.gov/summercelebration-artistcall](http://www.mercerisland.gov/summercelebration-artistcall)





# Maintenance and Operations Update: Turf Blanket Pilot

- The City piloted the use of turf blankets on some of the turfgrass in Aubrey Davis Park to see how they improve turfgrass through the winter.
- Good news – we are seeing success!
- Crews saw improved color and growth compared to non-covered areas over the two-month test period.
- We will continue to utilize this tool in the future.



# Leap for Green Fair Returns

- Mark your calendars – Leap for Green Earth Day Fair returns this spring!
- The event is scheduled for **Saturday, April 22 from 10am – 2pm** at the Community Center.
- Activities include entertainment, food trucks, sustainability vendors, and more.
- Visit [www.mercerisland.gov/greenfair](http://www.mercerisland.gov/greenfair) for details.





Item 1.

## Sponsors Needed:

**Presenting:**

\$20,000

**Site:**

\$10,000

**Entertainment:**

\$5,000

**Supporter:**

\$2,500 - \$1,000

To support contact:

[Katie.Herzog@mercergov.org](mailto:Katie.Herzog@mercergov.org)

# SUMMER CELEBRATION

JULY 15, 2023

**Mercerdale Park 10am - 4:30pm**

**Luther Burbank Park 6 - 10:15pm**

**Fireworks at 10pm!**

[WWW.MERCERISLAND.GOV/SUMMERCELEBRATION](http://WWW.MERCERISLAND.GOV/SUMMERCELEBRATION)



# Mercer Island Community and Event Center

## \*Slumber Party\*

- On Tuesday night, the Recreation Division partnered with the MIHS Band to provide sleeping space for approx. 50 students in MICEC meeting Rooms.
- The students were from the Moses Lake High School Wind Ensemble and taking part in the MISD Band Festival, to perform early Wednesday morning.
- The students were outstanding guests, and a huge thank you to the MISD staff and chaperons who spent the night.



**Thank you!**





## PARKS & RECREATION COMMISSION REGULAR MEETING MINUTES February 2, 2023

### CALL TO ORDER

Chair McCarthy called the meeting to order at 5:00pm via Zoom Online meeting.

### ROLL CALL

Chair Jodi McCarthy, Vice Chair Peter Struck, and Commissioners Don Cohen, Paul Burstein, and Ashley Hay were present for the Parks & Recreation Commission.

Staff present were Jason Kintner, Alaine Sommargren, Clint Morris, Ryan Daly, Paul West, Sarah Bluvas, Katie Herzog, and Raven Gillis.

### APPEARANCES

1. Yu L. Chan commented on Bike Skills Area
2. Jennifer Vincent commented on Bike Skills Area
3. Nancy Highiet Morse commented on Bike Skills Area
4. Karen Grove commented on Bike Skills Area
5. Brian Shiers commented on Bike Skills Area

### DEPARTMENT REPORT

#### 1. Division Manager Ryan Daly reported on the following items:

- Mercer Island Community & Event Center – 2023 Hours
- Partnered Programs
- Promoting Recreation at the MIPA Preschool Fair
- MIYFS Foundation 21<sup>st</sup> Annual Fundraising Breakfast
- MICEC Blood Drive
- Island Lanterns
- South Mercer Playfield Project Update
- Summer Celebration! July 15, 2023 – Sponsors Needed

### REGULAR BUSINESS

#### 2. Approval of Minutes

Minutes from the January 5, 2023 Regular Meeting were presented.

It was moved by Hay; seconded by Struck to:

**Approve the minutes from the January 5, 2023 meeting**

Passed: 5 – 0

#### 3. 2023 CIP Project Update

Jason Kintner, Chief of Operations, Clint Morris, Capital Division Manager, Paul West, CIP Project Manager, and Sarah Bluvas, CIP Project Manager presented. Commissioners reviewed the presentation, asked questions, engaged in discussion, and provided feedback.



#### 4. **Bike Skills Area Update & Conceptual Design**

Jason Kintner, Chief of Operations, Alaine Sommargren, Deputy Public Works Director, Sarah Bluvas, CIP Project Manager, and consultants presented. Commissioners reviewed the presentation, asked questions, engaged in discussion, and provided feedback.

It was moved by Burstein; seconded by McCarthy to:

**Approve the Bike Skills Area 30% design and recommend the City Council proceed to the 60% phase design process.**

Passed: 3 – 2

### **OTHER BUSINESS**

#### 5. **2023 Planning Schedule Update**

Ryan Daly, Division Manager, provided an update on the 2023 Planning Schedule.

#### 6. **Commissioner Reports / Work Plan Update**

Struck reported that when he tried to sign up for the recent volunteer event at Luther Burbank Park all the vacancies were filled. He extended a congratulations to the 25 volunteers who signed up early and were able to participate, and made a note to himself, as well as alerted others, to sign up early for these popular events, since they are like Taylor Swift concerts and sell out quickly.

Cohen shared his appreciation to Staff for their responsiveness to his inquiries when he's walking around the parks.

Hay reported that she enjoyed a beautiful day at Luther Burbank Park over the weekend and despite the weather being chilly she noticed the park was full of children enjoying the playground, and the tennis courts were filled with people playing pickleball, as well as a wait list of people waiting to play.

### **ADJOURNMENT at 6:43 PM**



# PARKS & RECREATION COMMISSION STAFF REPORT

Item 3  
March 2, 2023  
Regular Business

## AGENDA ITEM INFORMATION

<b>TITLE:</b>	Aubrey Davis Park Trail Safety Improvement Project 30% Design	<input type="checkbox"/> Discussion Only
<b>RECOMMENDED ACTION:</b>	Ask questions of panelists; discuss design options presented; consider motion(s) as proposed	<input checked="" type="checkbox"/> Action Needed: <input checked="" type="checkbox"/> Motion <input type="checkbox"/> Ordinance <input type="checkbox"/> Resolution

<b>STAFF:</b>	Paul West, Senior CIP Project Manager	
<b>COUNCIL LIAISON:</b>	Craig Reynolds	
<b>EXHIBITS:</b>	<ol style="list-style-type: none"> <li>72<sup>nd</sup> Ave Overpass Intersection Options diagrams</li> <li>72<sup>nd</sup> Ave Overpass Intersection Options comparison</li> </ol>	

## SUMMARY

### BACKGROUND

The [Aubrey Davis Park Master Plan](#) (2019, page 43, bullet D. Convergence Area) identified the trail intersection under the 72<sup>nd</sup> Ave SE Overpass as a “potential location for a trail roundabout to improve safety for bicyclists and pedestrians.” As part of the Aubrey Davis Trail Safety Improvements project, City staff and the design team have sought to implement this master plan element. An initial roundabout concept was presented as part of the draft 30% design to the Parks and Recreation Commission (PRC) at the [June 2, 2022](#) meeting. The design team revised the 30% design, including the roundabout element, for [July 7, 2022](#) and [September 1, 2022](#) meetings based on input from the public and the PRC. At the September meeting, the PRC resolved questions about all elements of the 30% design except for the roundabout element. The direction for this intersection remains the only outstanding issue in the PRC’s 30% design recommendation.

In the fall of 2022, WSDOT reviewed the 30% design. WSDOT staff provided extensive input on the roundabout feature. To address these comments, the design team developed two options for the roundabout. At its [January 5, 2023](#) meeting, the PRC reviewed the two roundabout options. Option 1, the larger roundabout with a 14’ travelway and a prominent 16’ diameter center island, was preferred by WSDOT and presented as the staff recommendation. Option 2, the smaller roundabout, had a 12’ travelway and an at-grade 10’ diameter concrete center. The PRC asked several questions about the proposal for Option 1 and shared concerns regarding the size. Questions included:

- What is the evidence that contributes to WSDOT’s preference for Option 1?
- Is there a way to reduce the size of Option 1?
- Is Option 2 an acceptable option to WSDOT?
- Are there other options that can be considered?

The PRC decided to delay forwarding a recommendation to City Council until it could further evaluate alternatives for the roundabout feature.

## WSDOT AND DESIGN TEAM PARTICIPATION

As requested by several commissioners, City staff has arranged for staff from WSDOT and the design team to be present at Thursday's meeting to answer questions. Once they have answered questions, WSDOT staff will have the option of leaving the meeting. The design team will remain to be available to assist with evaluating design alternatives.

## THREE UPDATED DESIGN OPTIONS

To support the PRC's direction, staff asked the design team to develop three options, including two non-roundabout options. These three options are presented in Exhibit 1. All three options will improve trail safety in comparison to the existing condition. City staff, the design team, and WSDOT staff have discussed these three options. Staff prepared a comparison matrix of the three options presented as Exhibit 2.

**Option 1: Roundabout** This option remains mostly the same as the preferred option presented in January. The center island height has been slightly reduced. This option remains the WSDOT preferred design.

**Option 2.1: New "mixing zone" option** This design is an update of the Option 2 presented in January. It removes the roundabout circulation pattern. Option 2.1 addresses concerns about the ability to function as a roundabout by reconfiguring it as a "mixing zone", similar to the mixing zones proposed for the restroom area. It provides more room for trail users to maneuver around each other.

**Option 3: Retain existing trail width through the intersection** The existing intersection remains substantially as-is. This option reduces the width of the spur path to the parking lot; it expands gravel shoulders to provide sight clearance and refuge for pedestrians, and it adds traffic control improvements to the existing condition.

Signage has been updated in all options to reflect WSDOT's recommendation to rely more on pavement markings and less on signs for traffic control. Signage details will be further developed in the 60% design phase.

## RECOMMENDED OPTION:

The 72<sup>nd</sup> Ave Overpass Intersection is a place where many trail users converge with differing goals, travel speeds, and behaviors. Trail users include bike commuters, recreational cyclists, recreational walkers, dog walkers, athletic teams, picnic shelter rental groups, kids and parents headed to the playground, and riders of new and emerging electric-powered devices, such as E-bikes and scooters. The volume of trail users is expected to continue to grow in coming decades.

There are three strategies to improve this intersection to reduce conflict among these users:

1. Provide adequate sight distance so trail users can anticipate the intersection.
2. Provide striping, pavement markings, and signs to alert users and alter their behavior.
3. Provide adequate maneuvering space for users to pass each other with reasonable separation.

All three options incorporate the first two strategies. However only Options 1 and 2.1 provide adequate maneuvering space for users. The 12' trail width in Option 3 limits how trail users crossing paths can maneuver around each other. The greater trail width of Options 1 and 2.1 provides each trail user more choices and more time to signal their intentions.

Additionally, Option 1 will achieve speed reduction by deflecting faster moving trail users around the center island. The defined circulation pattern will promote predictable behavior by all users and encourage users to



move through the intersection. Option 2.1 provides sufficient space but does not direct trail users as well. Also, Option 2.1 as a mixing zone would need to be designed so that it is not mistaken as a place to gather or rest. It will need to be different than the mixing zone by the restrooms. Aesthetic impacts of Option 1 are likely to be greater and could be a basis for choosing Option 2.1.

Option 1 is recommended to be incorporated into the 30% design. Selecting this option provides the greatest safety for current and future trail users. The difference in costs between Options 1 and 2.1 are insignificant. Aesthetic impacts of Option 1 can be mitigated to some degree in the subsequent design of the center island and the surrounding landscaping.

The budget impact of Option 1 can be addressed in several ways. The project can be split into phases and the roundabout construction postponed until funding can be secured. City staff have identified two grant programs that could fund the budget shortfall of approximately \$170,000 to complete this project. It is also possible that additional state funding could be obtained in future budget cycles. City Council may also consider this work a priority and appropriate additional capital funding to complete the project if it is available.

If the PRC selects an option, that will complete its 30% design recommendation. The design will be ready to transmit to City Council. The PRC could also ask the design team to modify one of these options if there is consensus to do so. However, if the modifications are minor, it would be more efficient to record them and defer such changes to the next design stage.

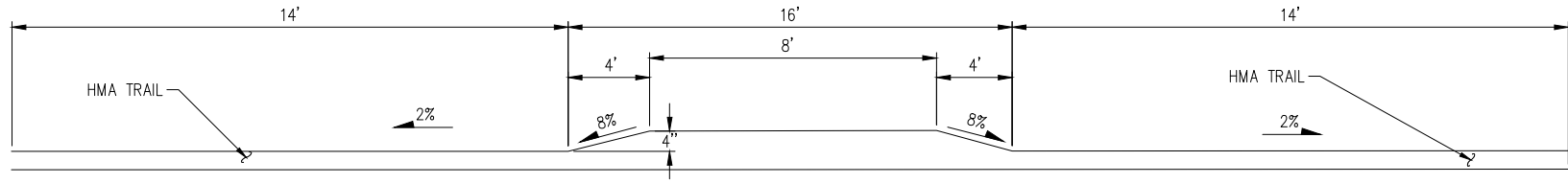
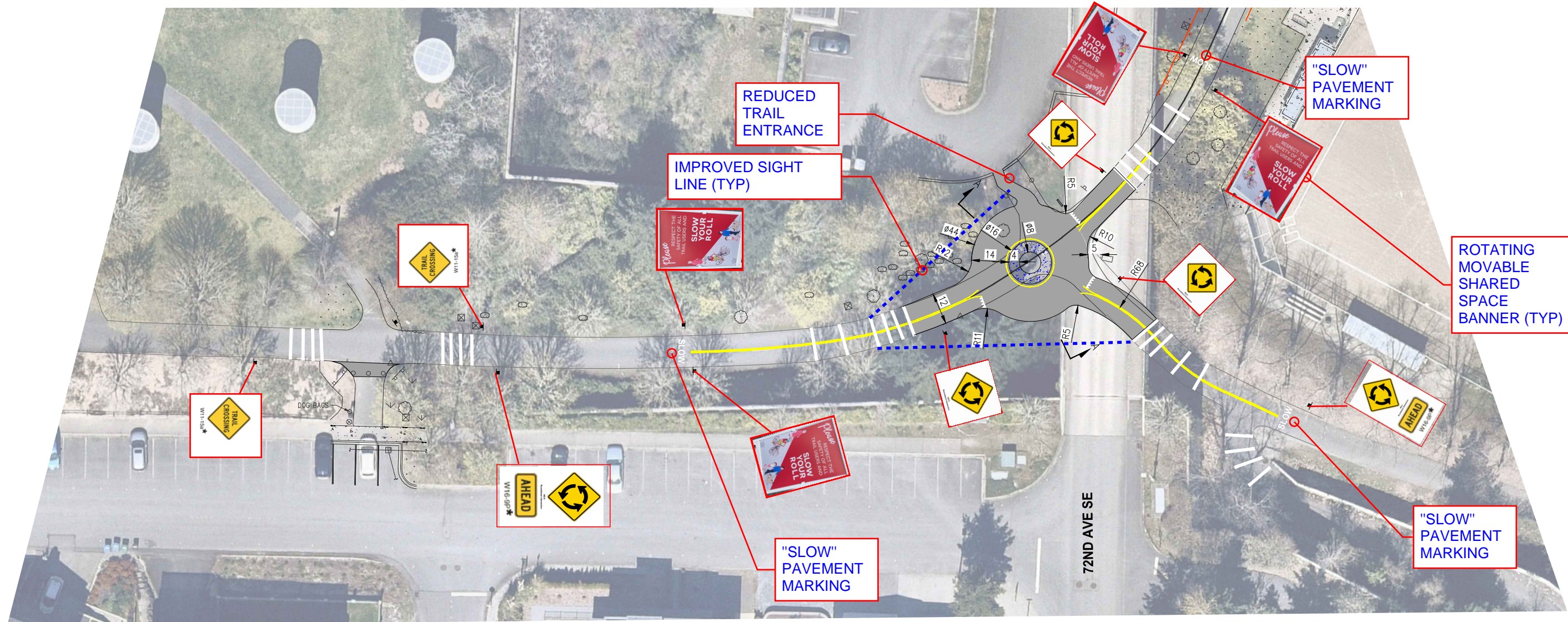
It is important to note that if the PRC selects Option 2 or 3, it will be taking a direction different from that suggested in the Aubrey Davis Park Master Plan, as mentioned in the **Background** section of this report. Staff believe that this may be justified given the effort expended to implement a roundabout solution at this location. Staff would document the decision in its agenda bill to City Council when the 30% design is transmitted. The PRC may also wish to discuss this effort in a transmittal memo if one of those options is selected.

#### **NEXT STEPS**

If the PRC selects an option for the 72<sup>nd</sup> Ave Overpass Intersection, staff recommends that the PRC's transmittal memo be referred to a subcommittee for finalization. Once the memo is approved by the PRC, City staff will work with the chair to transmit the memo to the City Council. Staff then will work with the Design Team to develop the 60% design and, if directed by the City Council, return to the PRC in Q2 2023 for 60% design review. The project was originally scheduled to construct in spring 2023; however, construction is now expected to begin in fall 2023 or later.

#### **RECOMMENDED ACTION**

1. Discuss design alternatives with WSDOT engineers and the design team.
2. Motion to include Option 1 in the 30% design.
3. If the PRC completes 30% design, direct staff to finalize the 30% design for presentation to the City Council. Authorize a subcommittee to finalize the recommendation memo and return it to the chair for PRC approval at the April 2023 meeting.



SECTION A-A

ECTS\MERCER IS\21098-Aubrey Davis Park Improvements\DESIGN\Drawings\Working\X21098PRP\_PRC\_OPT 1.dwg 2/20/2023 3:05 PM

NO.	DATE	BY	APPR.	REVISIONS

Approved By		X21098PRP_PRC_OPT 1.dwg FILENAME	
ENGINEERING MANAGER	DATE	DESIGNED BY	DATE
PROJECT MANAGER	DATE	DRAWN BY	DATE
PROJECT ENGINEER	DATE	CHECKED BY	DATE

**KPG**  
PSOMAS  
Seattle  
3131 Elliott Avenue, Suite 400  
Seattle, WA 98121 206.286.1640  
Tacoma | Wenatchee | KPG.com

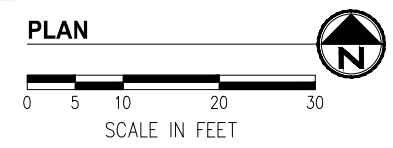
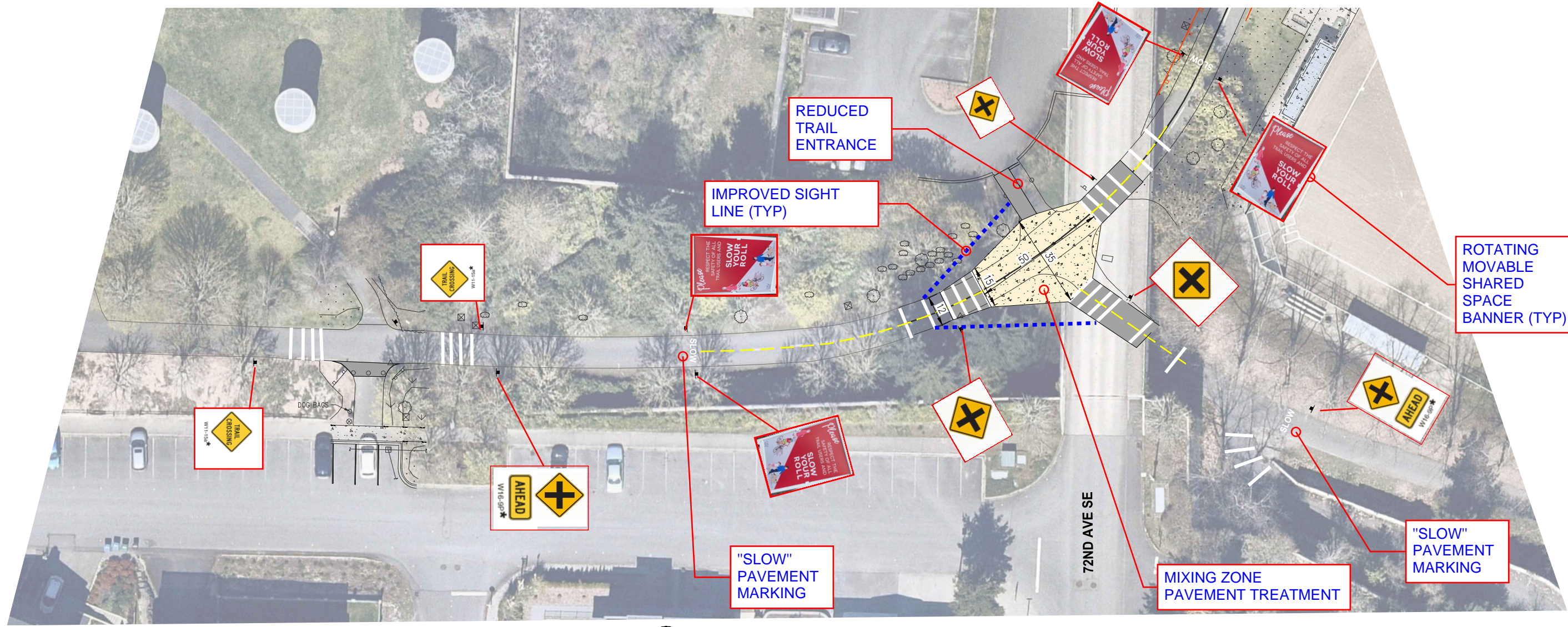
**30% REVIEW  
SUBMITTAL**



CITY OF MERCER ISLAND  
AUBREY DAVIS PARK  
TRAIL SAFETY IMPROVEMENTS

OPTION 1 ROUNDBOUT	
KPG PROJECT No. ---	SHT 1 OF 3





ECTS\MERCER IS\21098-Aubrey Davis Park Improvements\DESIGN\Drawings\Working\X21098PRP\_PRC\_OPT 2.dwg 2/22/2023 1:46 PM

NO.	DATE	BY	APPR.	REVISIONS

Approved By		X21098PRP_PRC_OPT 2.dwg FILENAME	
ENGINEERING MANAGER	DATE	DESIGNED BY	DATE
PROJECT MANAGER	DATE	DRAWN BY	DATE
PROJECT ENGINEER	DATE	CHECKED BY	DATE

**KPG**  
PSOMAS

Seattle  
3131 Elliott Avenue, Suite 400  
Seattle, WA 98121 206.286.1640  
Tacoma | Wenatchee | KPG.com

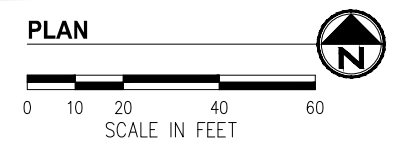
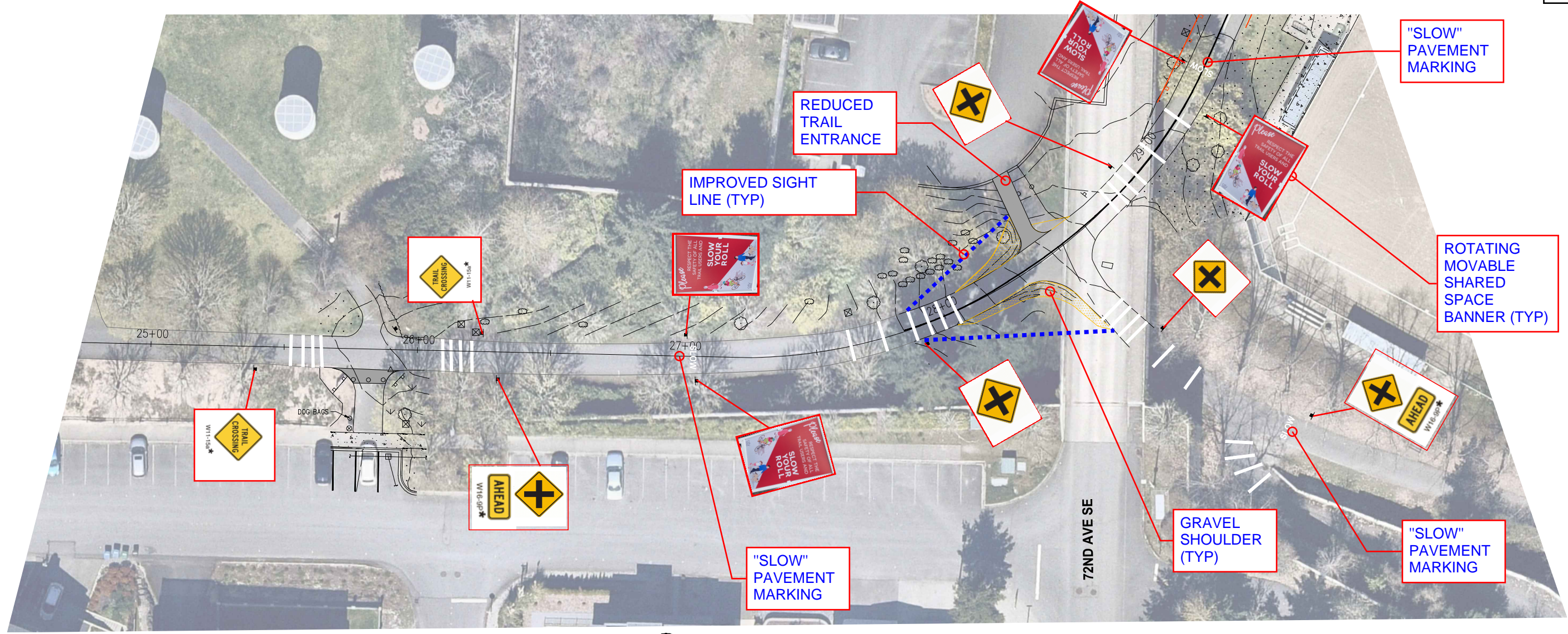
**30% REVIEW  
SUBMITTAL**



**CITY OF MERCER ISLAND  
AUBREY DAVIS PARK  
TRAIL SAFETY IMPROVEMENTS**

OPTION 2.1 MIXING ZONE	
KPG PROJECT No. ---	SHT <u>2</u> OF <u>3</u>





ECTS\MERCER IS\21098-Aubrey Davis Park Improvements\DESIGN\Drawings\Working\X21098PRP\_PRC\_OPT 3.dwg 2/20/2023 3:07 PM

NO.	DATE	BY	APPR.	REVISIONS

Approved By		X21098PRP_PRC_OPT 3.dwg FILENAME	
ENGINEERING MANAGER	DATE	DESIGNED BY	DATE
PROJECT MANAGER	DATE	DRAWN BY	DATE
PROJECT ENGINEER	DATE	CHECKED BY	DATE

**KPG**  
PSOMAS

Seattle  
3131 Elliott Avenue, Suite 400  
Seattle, WA 98121 206.286.1640  
Tacoma | Wenatchee | KPG.com

**30% REVIEW  
SUBMITTAL**



CITY OF MERCER ISLAND  
AUBREY DAVIS PARK  
TRAIL SAFETY IMPROVEMENTS

OPTION 3 CHANNELIZATION & SIGNAGE	
KPG PROJECT No. ---	SHT <u>3</u> OF <u>3</u>

**Aubrey Davis Park Trail Safety Improvements**  
**Exhibit 2: 72<sup>nd</sup> Ave Overpass Intersection Options Comparison**

	<b>Option 1: 44 foot diameter roundabout with signage, pavement markings and lighting to be further developed in subsequent design phases.</b>	<b>Option 2.1: 50' by 35' mixing zone with signage, pavement markings and lighting to be further developed in subsequent design phases.</b>	<b>Option 3: the existing trail width with signage, pavement markings, shoulder improvements and lighting to be developed in subsequent design phases</b>
<b>Total Cost (entire trail project)</b>	\$477,000	\$474,000	\$384,000
<b>Impervious Surface Comparison</b>	2670 SF (43% increase over existing intersection coverage)	2250 SF (21% increase over existing intersection coverage)	1857 SF (5% decrease over existing intersection coverage)
<b>Trail User Safety Features</b>	The 16 foot center island contrasts distinctly from the travelway, providing deflection of traffic to control speeds of all trail users; 14 foot trail width provides space for a variety of trail users to maneuver to avoid each other; signs and pavement markings warn trail users of the intersection and reduce speeds of compliant trail users; lighting increases visibility of the intersection	A wider trail "mixing zone" provides space for various users to maneuver past each other; this option does not provide traffic deflection like Option 1; signs and pavement markings warn trail users of the intersection and reduce speeds of compliant trail users; lighting increases visibility of the intersection	Signs and pavement markings warn trail users of the intersection and reduce speeds of compliant trail users; lighting increases visibility of the intersection; expanded shoulders provide limited maneuvering and refuge options
<b>Maneuvering Space</b>	Most improvement with defined circulation and wider trail section	Significant improvement with wider mixing zone trail section	Minimal improvement with the expanded trail shoulders
<b>Field User Safety</b>	Ballfield users would experience lower trail traffic speeds more consistently	Ballfield users would experience lower trail traffic speeds on average	Ballfield users would experience lower trail traffic speeds on average
<b>Environmental Impacts</b>	Increased pavement surface slightly increases the rate of runoff into WSDOT stormwater system that drains to Lake Washington	Increased pavement surface slightly increases the rate of runoff into WSDOT stormwater system that drains to Lake Washington	Similar to current condition: runoff drains into WSDOT stormwater system that drains to Lake Washington



	<b>Option 1: 44 foot diameter roundabout with signage, pavement markings and lighting to be further developed in subsequent design phases.</b>	<b>Option 2.1: 50' by 35' mixing zone with signage, pavement markings and lighting to be further developed in subsequent design phases.</b>	<b>Option 3: the existing intersection pavement with signage, pavement markings, shoulder improvements and lighting to be developed in subsequent design phases</b>
<b>Landscape Aesthetics</b>	Larger area of pavement reduces living landscape area; center island and lighting is an opportunity for creative detailing or a placemaking feature; existing landscape in the surrounding area would be cut back for visibility	Larger area of pavement reduces living landscape area, but slightly less so than Option 1; pavement treatment is an opportunity for creative detailing or placemaking; existing landscape in the surrounding area would be cut back for visibility	Existing landscape in the surrounding area would be cut back for visibility; location under overpass is shady and has limited ability to grow plants
<b>Long-term performance</b>	This facility would mitigate higher traffic volumes and more diverse trail users, such as E-bikes and scooters	This facility would handle existing traffic volumes. It would mitigate an increase in traffic volume, but not as well as Option 1	This facility would handle existing traffic volumes. It would not mitigate an increase in traffic volume as well as Options 1 or 2
<b>Forward Compatibility</b>	This facility would make future options for this intersection more difficult to implement	This facility would make future options for this intersection more difficult to implement	This facility could be upgraded to a roundabout or other intersection configuration as a future project if needed



# PARKS & RECREATION COMMISSION STAFF REPORT

Item 4  
March 2, 2023  
Regular Business

## AGENDA ITEM INFORMATION

<b>TITLE:</b>	Luther Burbank Park Sport Courts Renovation	<input type="checkbox"/> Discussion Only <input checked="" type="checkbox"/> Action Needed: <input checked="" type="checkbox"/> Motion <input type="checkbox"/> Ordinance <input type="checkbox"/> Resolution
<b>RECOMMENDED ACTION:</b>	Approve the recommendation to amend the project scope to convert a third Luther Burbank tennis court to pickleball use.	

<b>STAFF:</b>	Sarah Bluvas, CIP Project Manager Paul West, CIP Project Manager
<b>COUNCIL LIAISON:</b>	Craig Reynolds
<b>EXHIBITS:</b>	n/a

## SUMMARY

The purpose of this agenda item is to provide background information to the Parks & Recreation Commission (PRC) on the Luther Burbank Park Sport Courts Renovation capital project and to seek the PRC’s approval to convert a third Luther Burbank Park tennis court to dedicated pickleball use instead of a dual-use court for tennis/pickleball. The other two courts will also be renovated for dedicated pickleball use as originally planned, converting the Luther Burbank Park sport courts facility into a pickleball-only facility.

### BACKGROUND

Luther Burbank Park features three sport courts that have hosted summer tennis camps and first-come, first-served open play by community members and off-Island visitors. The courts were constructed in 1972 below grade on top of dense soil; the subgrade has settled over the last 50 years; they have endured tree root intrusion and have become wavy, affecting recreational tennis play and general useability. In summer 2018, the City closed the courts to repair extensive cracking, and the courts closed again in 2020 to prevent players from congregating during the COVID-19 pandemic.

### PICKLEBALL AND LUTHER BURBANK PARK

Prior to the pandemic, pickleball players played indoors during drop-in hours at the Mercer Island Community and Event Center. The Community Center closed in March 2020 due to the pandemic, and indoor pickleball play did not resume until the facility reopened with limited hours and use in 2021. While the Community Center was closed, residents worked with the City to temporarily stripe the Luther Burbank Park courts for dual-use pickleball and tennis play. Pickleball players voluntarily coordinate playtime using two online platforms, and pickleball play has consistently been the primary use on the courts since the temporary striping was installed.

The 2022 PROS Plan found that access to pickleball courts and access to tennis courts were of equal importance to survey respondents (34% very important/somewhat important to 36% very important/somewhat important, respectively). However, Mercer Island currently has fourteen dedicated, outdoor public tennis courts but zero dedicated, outdoor pickleball courts (an additional six tennis courts are

available to the public at the Mercer Island High School when school activities are not in session). The PROS Plan also states that the City should “plan for a grouping of new, dedicated pickleball courts” and identifies Luther Burbank Park as a preferred site for converting tennis courts to pickleball.

Renovating the Luther Burbank Park sport courts was approved in the 2023-2024 Biennial Budget and Capital Improvement Program. This capital project includes:

- Resurfacing and restriping the courts, with pickleball as the primary use;
- Replacing netting systems; and
- ADA improvements such as limited grading at the facility’s southwest corner to improve access to the courts.

The City received a grant from the King County Parks Capital and Open Space grant program, which is funded by the King County Parks Levy, to support this project. DA Hogan has been retained to design the court renovations, and construction is anticipated to begin in fall 2023.

#### **DEDICATED FACILITY VS. DUAL-USE FACILITY**

The original scope for this capital project included converting two tennis courts to six dedicated pickleball courts and renovating the third tennis court to be a dual-use tennis/pickleball court. This would result in eight pickleball courts and one tennis court at the renovated facility. However, staff now recommend amending the project scope to convert all three tennis courts to dedicated pickleball courts, resulting in an additional number of pickleball courts to be determined in final design. Reasoning for this recommendation is provided below.

- **Diminished experience for both sports:** These sports feature different playing styles and logistics, making it difficult to maintain the experience of each individual sport in a dual-use facility.
- **Operational challenges posed by a dual-use sport court:** After the sport courts at Luther Burbank Park are renovated, the facility will continue to be operated on a self-regulated, first-come, first-served basis, using guidelines posted at the facility. Dual-use facilities that are open-scheduled often require an additional level of customer service to address conflicts between user groups.
- **Guidance from the 2022 PROS Plan:** The 2022 PROS Plan found that access to pickleball courts and access to tennis courts were of equal importance to survey respondents (34% very important/somewhat important to 36% very important/somewhat important, respectively). However, Mercer Island currently has fourteen dedicated, outdoor public tennis courts but zero dedicated, outdoor pickleball courts. Through the recommended change, the community will gain at least eight dedicated pickleball courts while maintaining access to eleven public tennis courts. Additionally, the PROS Plan notes the following when planning new pickleball facilities: *Outdoor pickleball courts are most successful if clustered rather than spread individually throughout the park system. Such a grouping promotes [revenue generating] leagues, pick-up tournaments, and related social interaction. Courts are best located in groups (at least two, but preferably six to eight to accommodate the social aspects of the sport) to provide for the regular league activity that grows as the sport is adopted within a community.*

On Thursday night, staff will seek the PRC’s support to convert the third Luther Burbank Park tennis court to dedicated pickleball use.

#### **NEXT STEPS**

After a decision is made for the third tennis court, staff will update the grant project scope with King County. No major impacts to the grant award or construction cost estimate/timeline are anticipated by making this

change. DA Hogan will finalize the design this spring and prepare the project for construction, which is planned for two phases. The bulk of work will be completed in fall 2023, and the courts will be temporarily restriped to allow pickleball play until acrylic surfacing and permanent striping can be installed (tentatively planned to complete by spring 2024).

**RECOMMENDED ACTION**

Approve the recommendation to amend the project scope to convert a third Luther Burbank tennis court to pickleball use.

# PA0119: Luther Burbank Park Sport Courts Renovation

Parks & Recreation Commission

26 March 2, 2023



Item 4.



# Condition of the Courts

- Three sport courts available for first-come, first-served play during park hours
- Built in 1972 below-grade on dense soil; subgrade has settled over the last 50 years
- Courts suffered from major root intrusions and became wavy, affecting play and general use.
- City repaired extensive cracking in 2018.
- Renovations approved in the 2023-2024 City Budget and Capital Improvement Program



# Pickleball at Luther Burbank Park



- MICEC Pickleball stopped when facility closed in March 2020 due to the pandemic
- Community members worked with City to clean up the courts, return the nets, and temporarily stripe the courts for pickleball
- Shared-use courts still open for first-come, first-served play

# King County Parks Capital & Open Space Grant

Item 4.

- Grant program funded by the King County Parks Levy
- City received funds to design and renovate the Luther Burbank courts in 2023/2024
- Grant scope included:
  - **Permanently striping two courts for pickleball**, for a total of six dedicated pickleball courts
  - **Striping the third court for tennis/pickleball shared-use**, resulting in two pickleball courts and one tennis court
- The **third tennis court** is the focus of our discussion tonight.



# Managing a Multi-Use Facility

- Difficult to **maintain the experience** for each sport
- Pose **operational challenges**, including when facilities are used on first-come, first-served basis
- **2022 PROS Plan** found access to pickleball courts and to tennis courts of equal importance among survey respondents and advises that “pickleball courts are most successful if clustered rather than spread” through park system



# Additional Public Comment Received

- 50 comments e-mailed to PRC
- Themes from the comments
  - Sports have different pace of play, which impacts court turnover/wait times.
  - Players of both sports prefer to play on dedicated courts over shared-use.
  - Support for permanent striping for eight pickleball courts



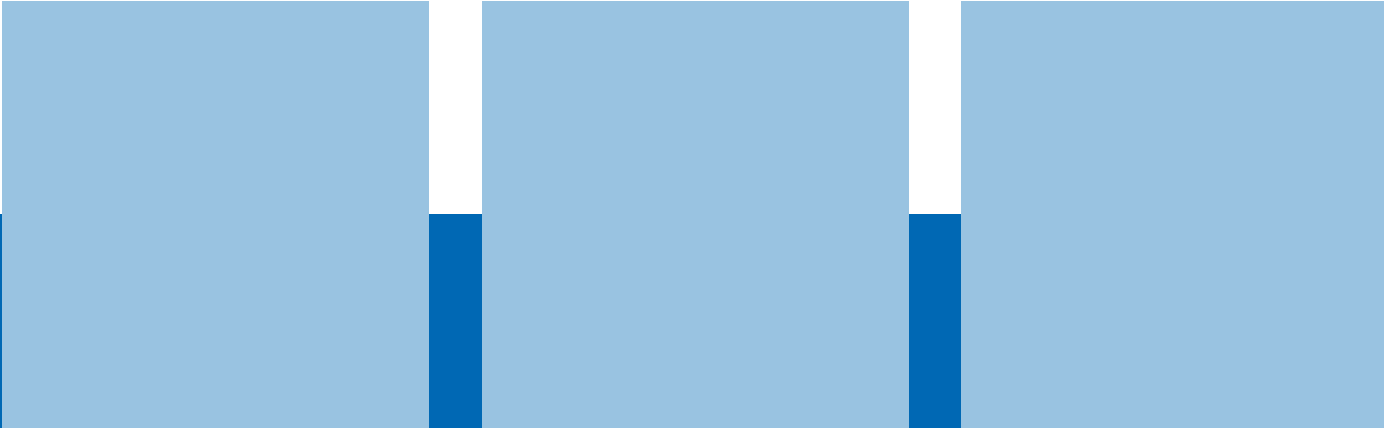
# Recommendation + Next Steps

- Staff recommend permanently striping the third court for pickleball use instead of striping for shared tennis/pickleball use.
- Number of pickleball courts and court configuration would be finalized during design
- Renovated facility would still be used on a first-come, first-served basis and be available for other sport court activities but would be permanently reconfigured/striped for pickleball
- Next steps include:
  - Update grant scope with King County – Grant Manager has indicated that there shouldn't be any impacts to grant funding with this change
  - Finalize design – Staff will update the PRC on progress at future meeting(s)
  - Construct the project – Anticipated to take place over two phases in Fall 2023 and Spring 2024





# Questions?



# Parks & Recreation Commission

## 2023 Planning Schedule

1st Thursday of Month- Regular Meetings



Updated: 2/24/23

Date	Meeting Type	Agenda Item
5-Jan	Regular	ADTS Improvement Project 30% Design Recommendation
		Bike Skills Area Conceptual Design Update
2-Feb	Regular	2023 CIP Projects Update
		Bike Skills Area Design Update
2-Mar	Regular	ADTS Improvement Project 30% Design Update
		LB Pickleball Court- Exclusivity Discussion
April (TBD)	Regular	2022 Recreation Division Annual Report (Memo)
4-May	Regular	Mercer Island Library- Annual Update
1-Jun	Regular	Chair/Vice-Chair Elections
6-Jul	Regular	Bylaws Review
August	No Meetings Summer Break	
7-Sep	Regular	
5-Oct	Regular	
2-Nov	Regular	
Dec.TBD	Regular	PROS Plan Goals and CIP Progress Update
		Recreation Policy Implementation Status Update (Memo)



Item Type	Items to be scheduled
Policy	Park Code/Rules Updates- signage in parks, appropriate uses of space, etc. <i>(as needed)</i>
Policy	Recreation Facility Naming
Policy	Recreation Sponsorship
Policy	Recreation Service Scholarship
Project	Mercerdale/Groveland & Clarke Master Plan Kick-off
Project	Luther Docks Project <i>(Periodic touch points)</i>
Project	Aubrey Davis Trail Safety Project <i>(Periodic touch points)</i>
Project	Bike Skills Area <i>(Periodic Touch points)</i>
Annual Agenda Items	
KCLS- Mercer Island Branch Operations Update (March)	
Annual PRC Chair/Vice-Chair Elections (May)	
PROS Plan Goals/Implementation Update (June)	
Annual Bylaws Review (July)	
Various CIP Recommendations (TBD)	
Annual Year-End Report	