



OPEN SPACE CONSERVANCY TRUST REGULAR HYBRID MEETING

Thursday, July 17, 2025 at 5:00 PM

BOARD MEMBERS

Chair: Geraldine Poor

Vice Chair: Hillary Ethe

Secretary: Marie Bender

Board Members: Thomas Hildebrandt,
Brian Gaspar, Carol Lynn Berseth and Daniel Becker

LOCATION & CONTACT

Mercer Island Community & Event Center and Zoom

8236 SE 24th Street | Mercer Island, WA 98040

Phone: 206.275.7600 | www.mercerisland.gov

We strive to create an inclusive and accessible experience. Those requiring accommodation for meetings should notify the Staff Liaison's Office 3 days prior to the meeting at 206.275.7874 or by emailing sam.harb@mercerisland.gov

The virtual meeting will be broadcast live on Zoom and recorded and saved on the City Council's [YouTube Channel](#)

Registering to Speak: Individuals wishing to speak live during Appearances will need to register their request with staff at **206.275.7861** and leave a message or [email](#) before 4 PM on the day of the meeting. Each speaker will be allowed three (3) minutes to speak.

Join by Telephone at 5:00 PM: Call **253.215.8782** and enter Webinar ID **853 2331 6198** and Password **316105** when prompted.

Join by Internet at 5:00 PM: To watch the meeting, or speak under appearances, over the internet via your computer, follow these steps:

- 1) Click [this link](#)
- 2) If the Zoom app is not installed on your computer, you will be prompted to download it.
- 3) If prompted for Webinar ID, enter **853 2331 6198**; Enter Password **316105**

Join in person at 5:00 PM: Mercer Island Community & Event Center - 8236 SE 24th Street, Mercer Island

CALL TO ORDER & ROLL CALL – 5:00 PM

PUBLIC APPEARANCES

REGULAR BUSINESS

1. Open Space Conservancy Trust April 29, 2025 Minutes

Recommended Action: Approve minutes

2. Election of Officers

Recommended Action: Elect Officers

3. Herbicide Application Report

Recommended Action: Receive report

4. Off Leash Dog Evaluation

Recommended Action: Discussion

5. Pioneer Signage Inventory and Update

Recommended Action: Discussion

OTHER BUSINESS

6. [Department Update](#)

7. [Quadrant](#) Reports
8. Topics for Future Discussion
9. [Next](#) Scheduled Meeting – October 16, 2025

ADJOURNMENT



OPEN SPACE CONSERVANCY TRUST SPECIAL HYBRID MEETING MINUTES April 29, 2025

CALL TO ORDER

The Open Space Conservancy Trust meeting was called to order by Chair Poor at 5:02pm.

ROLL CALL

Chair Geraldine Poor, Vice Chair Hillary Ethe, Secretary Marie Bender, and Trustees Thomas Hildebrandt, Carol Lynn Berseth, and Brian Gaspar were present.

Parks Operations Manager Sam Harb, Natural Resources Program Manager Lizzy Stone, City Engineer Patrick Yamashita, Transportation Engineer Rebecca Corigliano, and Recreation Specialist Raven Gillis were present.

APPEARANCES

No public appearances

REGULAR BUSINESS

1. Approval of Minutes

Minutes from January 16, 2025, Regular Meeting

It was moved by Hildebrandt; seconded by Bender to:

Approve the minutes from January 16, 2025, meeting.

Passed: 6 – 0

2. Tribute to City Councilmember Jake Jacobson

Trustees shared memories about Councilmember Jacobson.

A video in memoriam was played in remembrance of Councilmember Jacobson.

3. Island Crest Way and SE 68th Street Intersection Update

City Engineer Patrick Yamashita and Transportation Engineer Rebecca Corigliano presented.

Trustees asked questions, engaged in discussion, and provided input.

4. 2025 Restoration and Trails Work Plan

Natural Resources Program Manager Lizzy Stone presented. Trustees asked questions, engaged in discussion, and provided feedback.

It was moved by Hildebrandt; seconded by Berseth to:

Approve the 2025 Restoration and Trails Work Plan

Passed: 6 – 0

5. 2024 Forest Health Assessment Overview

Natural Resources Program Manager Lizzy Stone presented. Trustees asked questions, engaged in discussion, and provided feedback.

OTHER BUSINESS

6. Department Report

Parks Operations Manager Sam Harb presented. Trustees received the report.

7. Quadrant Reports

Northwest quadrant – Bender & Hildebrandt reported.

Northeast quadrant – Berseeth & Gaspar reported.

Southeast quadrant – Ethe & Poor reported.

8. Topics for future discussion

Trustees shared their recommendations for future discussion.

Chair Poor noted that elections will be conducted during the next meeting on July 17th and asked if there are any planned absences for that meeting. Vice Chair Ethe reported they will not be able to attend.

9. Next Meeting

The next regular meeting is scheduled for July 17, 2025, at 5:00 PM.

ADJOURNMENT at 6:55 PM



OPEN SPACE CONSERVANCY TRUST

STAFF REPORT

Item (3)
July 17, 2025
Regular Business

AGENDA ITEM INFORMATION

TITLE:	Annual Herbicide Application Report 2025	<input checked="" type="checkbox"/> Discussion Only
RECOMMENDED ACTION:	Receive report.	<input type="checkbox"/> Action Needed: <input type="checkbox"/> Motion <input type="checkbox"/> Ordinance <input type="checkbox"/> Resolution
STAFF:	Lizzy Stone, Natural Resources Program Manager	
EXHIBITS:	1. 2024 Herbicide Application Map 2. 2025 Monitoring and Herbicide Treatment Map	

SUMMARY

In May 2010, the Open Space Conservancy Trust adopted the Herbicide Use Protocol which prescribes the situations in which herbicide may be used on Trust properties. The protocol is updated periodically to reflect changes to best practices, which are driven by research on treatment effectiveness, environmental impact, and other factors. The protocol requires City staff to report to the Trust annually on the recent use and planned uses of herbicides for the year.

2024 REPORT

In 2024, Mercer Island's Natural Resources team conducted monitoring for yellow archangel (*Lamium galeobdolon*), knotweed (*Polygonum* spp.), yellow flag iris (*Iris pseudacorus*), spotted jewelweed (*Impatiens capensis*), and shiny geranium (*Geranium lucidum*) in Pioneer Park or Engstrom Open Space. Yellow archangel was the only of those species found on Trust property.

Yellow archangel was first identified and treated in Pioneer Park in 2010. This initial treatment was largely successful and eradicated approximately 90-95% of the infestation. Regular monitoring of the area has resulted in subsequent treatments to manage remaining infestations. In 2024, lingering patches of yellow archangel were identified along the north edge of the NW quadrant, as well as in the south edge of the SE quadrant. Both populations were treated in the spring and the fall with a formulation of 1.5% triclopyr, 2.5% glyphosate, and 2% adjuvant. All products used were aquatic-approved formulations. Adjacent neighbors were contacted and resources were shared about the weed, with the goal of developing a collaborative approach to eliminating the populations.

While conducting Comprehensive Weed Removal and Invasive Removal Maintenance on over 36.9 acres of Trust property, contractors removed or treated any invasive trees that were found throughout these sites. Where invasive trees were found, seedlings were manually removed, smaller trees were cut and the cut stem was painted with triclopyr, and larger trees were injected using EZ-Ject lance Copperhead shells containing the herbicide imazapyr. Trees that were included in these treatments are: English holly (*Ilex aquifolium*),

English laurel (*Prunus laurocerasus*), English hawthorn (*Crataegus monogyna*), and Portugal laurel (*Prunus lusitanica*).

Additionally, contractors removed all herbaceous weeds from areas receiving Comprehensive Weed Removal and Invasive Removal Maintenance work. The vast majority of this work was manual removal of English ivy and non-native blackberry. In select patches of non-native blackberry where the roots could not be manually removed without disturbing an adjacent native plant, contractors painted cut stems with the herbicide triclopyr. This was needed in situations where blackberry is growing through, or directly next to, a native plant. A cut-paint herbicide application involves cutting stems to approximately 6-inches tall and immediately applying herbicide to the cut stem using a paint brush or dropper. This approach allows for targeted control of a species, without risking off-target spray to nearby desirable species.

Invasive trees were treated throughout 16.6 acres of Pioneer Park Northeast and 1.6 acres of Pioneer Park Northwest. Non-native blackberry was treated with a cut-paint application of herbicide across 4.6 acres of Pioneer Park Northeast and 1.6 acres of Pioneer Park Northwest. Invasive trees and blackberry were also found in Pioneer Park Southeast and Engstrom Open Space, but the plants were able to be removed manually in these locations.

Exhibit 1 shows the points where yellow archangel was found and treated, as well as contractor zones where surveys found at least some invasive trees or non-native blackberry populations that required herbicide treatment. This map does not represent a full survey of all non-native trees and blackberry on Trust properties.

2025 PLAN

In 2025, the Natural Resources team will again be monitoring noxious weed populations in Pioneer Park and Engstrom Open Space. The crew will survey for yellow archangel, knotweed, yellow flag iris, spotted jewelweed, and shiny geranium.

Contracted crews will be conducting Comprehensive Weed Removal work across 23.5 acres of Pioneer Park NE, 10.1 acres of Pioneer Park SE, and 5 acres of Engstrom Open Space. As part of this work they will be locating and removing or treating any invasive trees or invasive blackberries that cannot be removed manually.

Exhibit 2 shows areas where yellow archangel has been found previously, as well as contractor zones where comprehensive weed removal work will be taking place. These contractor zones are areas where invasive tree or blackberry treatment may occur.

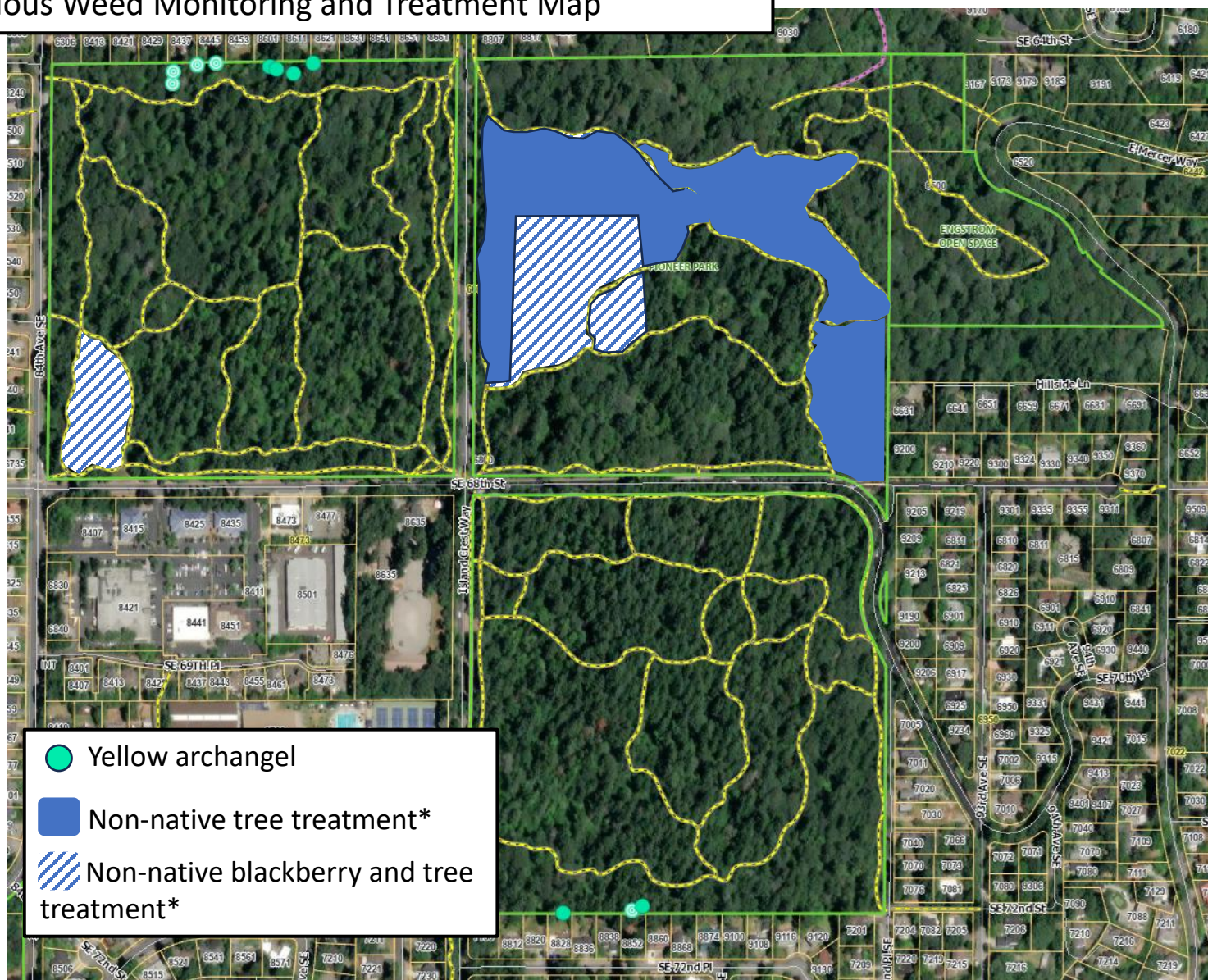
RECOMMENDED ACTION

Receive report.

Pioneer Park and Engstrom Open Space

Exhibit 1: 2024 Noxious Weed Monitoring and Treatment Map

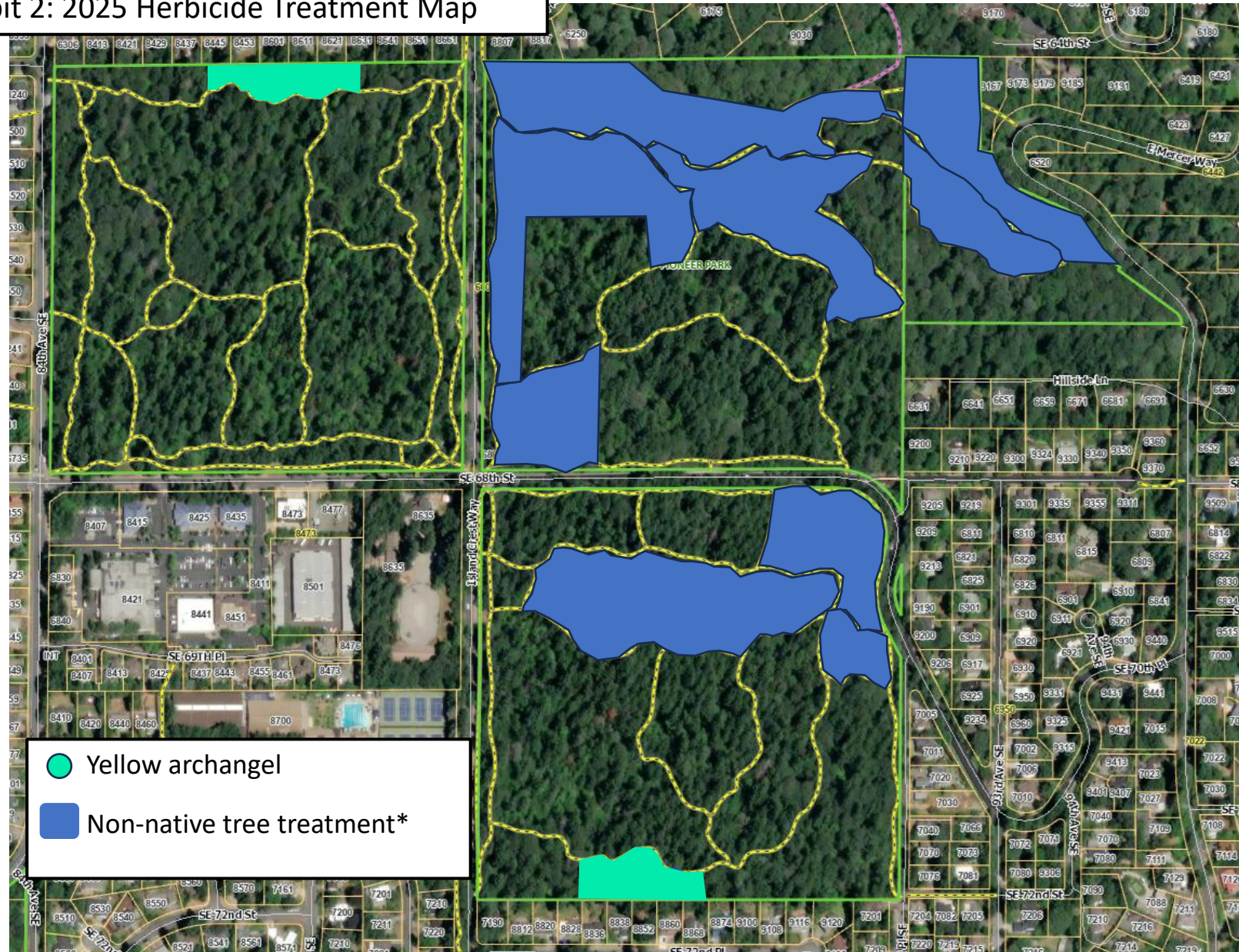
Item 3.



*Highlighted locations received treatment where non-native trees were found that could not be effectively dug up and where non-native blackberry was growing up through native plants. These are sites where work was contracted in 2024. This map does not represent a full survey of all non-native trees or blackberry on Trust property.

Pioneer Park and Engstrom Open Space Exhibit 2: 2025 Herbicide Treatment Map

Item 3.



*Highlighted locations received treatment where non-native trees were found that could not be effectively dug up. These are sites where work was contracted in 2025. This map does not represent a full survey of all non-native trees or blackberry on Trust property.



2024 Herbicide Report and 2025 Plan

Open Space Conservancy Trust
July 17th, 2025

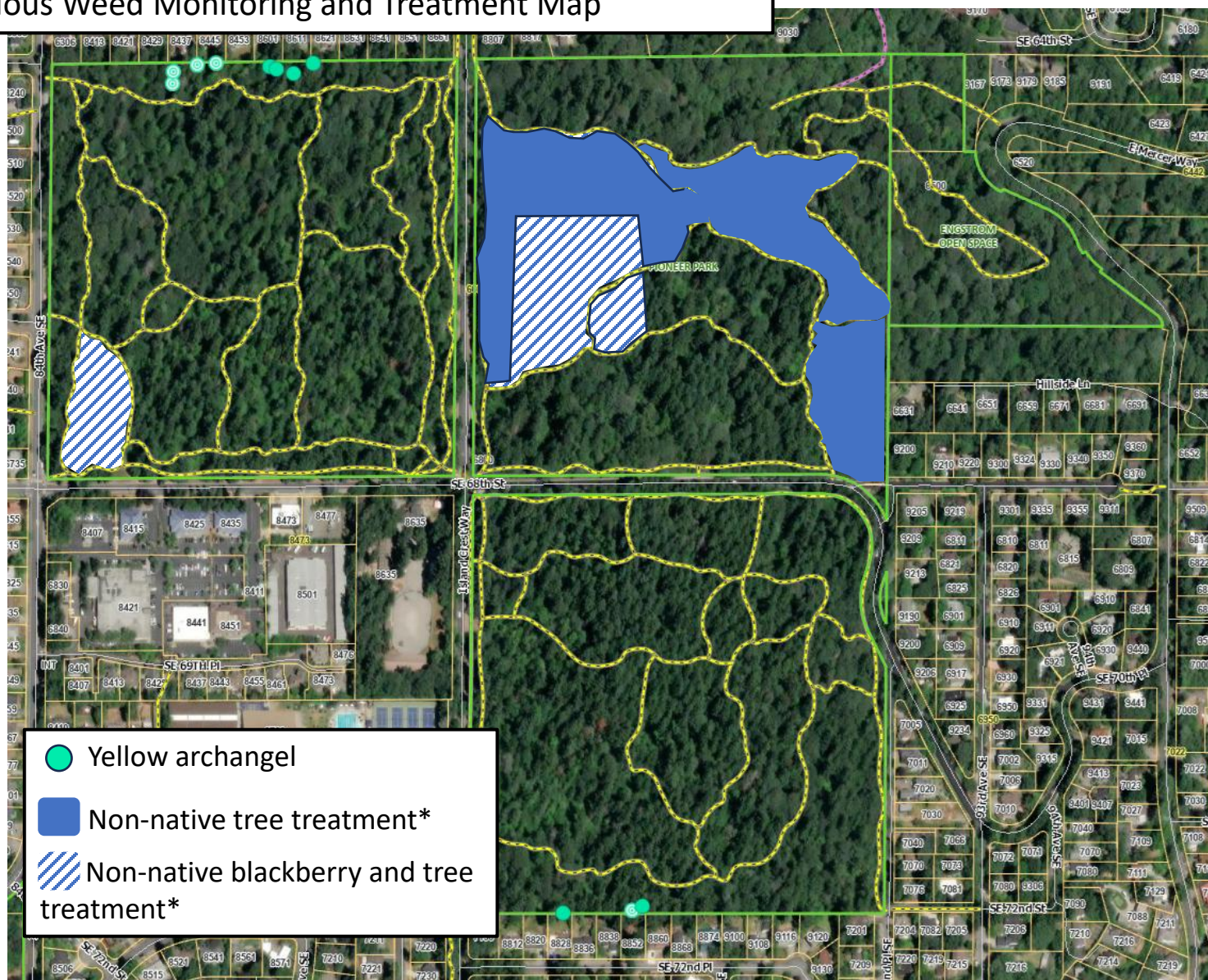
Open Space Conservancy Trust Herbicide Use Protocol

- Prescribes when herbicide may be used in Pioneer Park and Engstrom Open Space.
- Adaptive management framework to ecological restoration.
- Allows for strategic herbicide use when manual removal would cause greater ecological damage.

Pioneer Park and Engstrom Open Space

Exhibit 1: 2024 Noxious Weed Monitoring and Treatment Map

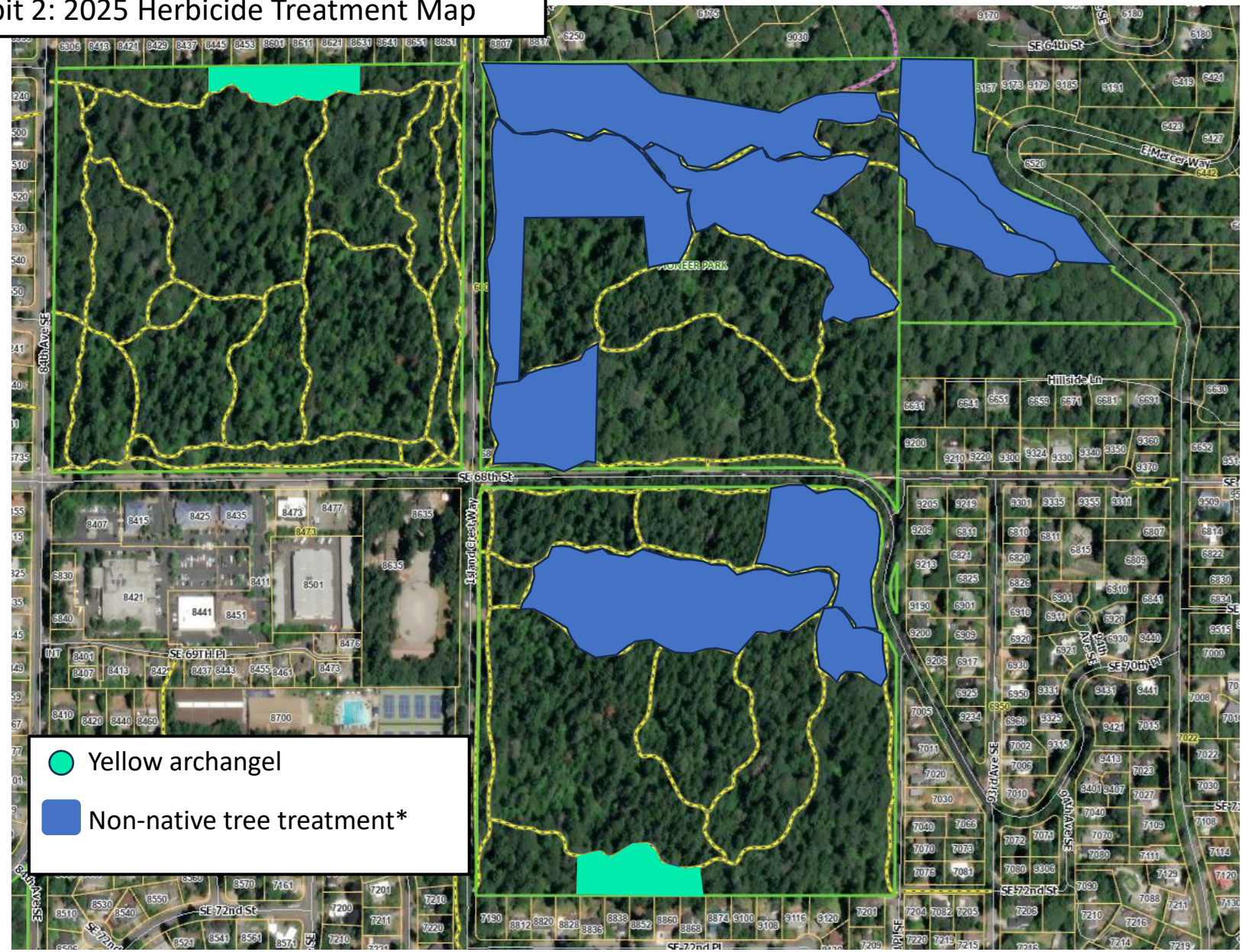
Item 3.



*Highlighted locations received treatment where non-native trees were found that could not be effectively dug up and where non-native blackberry was growing up through native plants. These are sites where work was contracted in 2024. This map does not represent a full survey of all non-native trees or blackberry on Trust property.

Pioneer Park and Engstrom Open Space
Exhibit 2: 2025 Herbicide Treatment Map

Item 3.



*Highlighted locations received treatment where non-native trees were found that could not be effectively dug up. These are sites where work was contracted in 2025. This map does not represent a full survey of all non-native trees or blackberry on Trust property.



Yellow archangel

- Fast-growing, herbaceous perennial
- Spreads by stem fragments, root fragments, and seeds
- Class B noxious weed in King County-control is recommended, not required
- Hand pull small patches
- Treated in spring and fall using glyphosate + triclopyr + surfactant (spreader-sticker)



Invasive Tree Treatment

- English laurel (*Prunus laurocerasus*)
 - English holly (*Ilex aquifolium*)
 - European mountain ash (*Sorbus aucuparia*)
 - English hawthorn (*Crataegus monogyna*)
 - wild cherry (*Prunus avium*)
 - Portugal laurel (*Prunus lusitanica*)
 - black locust (*Robinia pseudoacacia*)
 - cherry plum (*Prunus cerasifera*)
 - tree-of-heaven (*Ailanthus altissima*)
- EZ-Ject lance for larger trees
 - Cut and paint for smaller trees



Himalayan and evergreen blackberry

- Quickly forms dense thickets
- Prevents tree regeneration
- Manually dig roots of most plants
- Where growing up through or immediately next to native plant, cut- paint herbicide



2025 Pioneer Park Off Leash Dog Evaluation

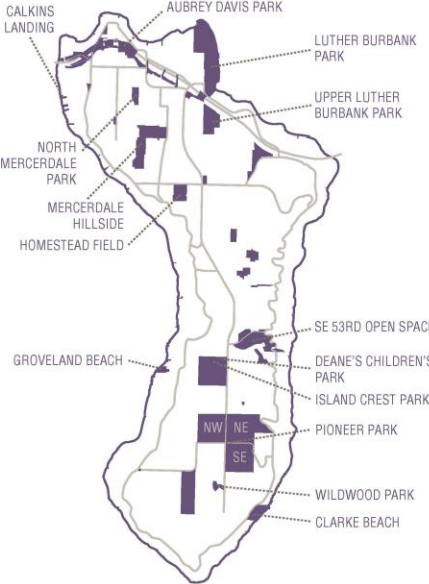


Background

- Standing agenda item in our work plan
- Issue in the past, more public comment and City outreach including “off leash dog training”
- In 2024 there were 4 complaints about off leash dogs and 3 reports of lost dogs per MIPD
- Since January 2025 MIPD has logged 4 calls related to dogs in the area
- Currently stocking Dog Owners Guide in the park


Current Guide

Item 4.



CALKINS LANDING
AUBREY DAVIS PARK
LUTHER BURBANK PARK
UPPER LUTHER BURBANK PARK
NORTH MERCERDALE PARK
MERCERDALE HILLSIDE
HOMESTEAD FIELD
GROVELAND BEACH
SE 53RD OPEN SPACE
DEANE'S CHILDREN'S PARK
ISLAND CREST PARK
PIONEER PARK
WILDWOOD PARK
CLARKE BEACH

NW NE SE



DOG OWNER'S GUIDE

to Mercer Island Parks

GOOD MANNERS ARE CONTAGIOUS!

Spread the dog love by following these simple etiquette tips in Mercer Island Parks:


- Pick up your dog's waste, and dispose of it properly
- Be prepared to leash your dog if necessary
- Prevent your dog from chasing wildlife
- Encourage your dog to stay on the trail to avoid damaging forest vegetation
- Prevent your dog from approaching other park users, unless invited
- Use designated off-leash areas or non-forested areas to play fetch


QUESTIONS ABOUT DOGS IN PARKS?

Contact the Mercer Island Parks & Recreation Department at miparks@mercergov.org or (206) 275-7609

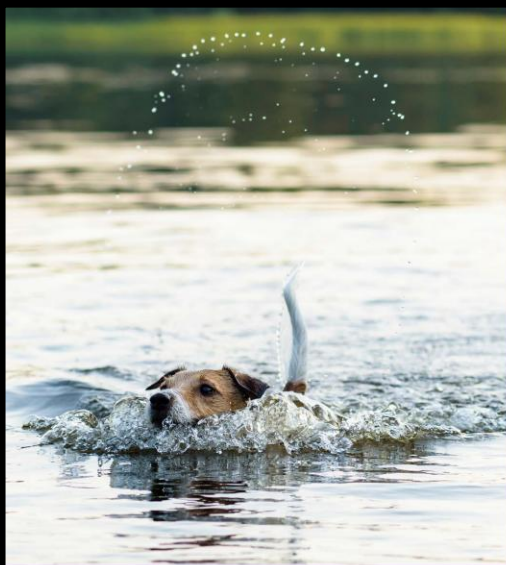
Report any violations of the Animal Code to woof@mercergov.org or to the non-emergency line at (425) 577-5656. Please include date and time of violation, location, dog name and breed (if known)

This pamphlet summarizes selected components of MICC 7.04, which governs animal regulations on Mercer Island





CITY OF MERCER ISLAND
PARKS & RECREATION



VOICE / SIGNAL CONTROL AREAS

There are many parks where you can take your dog off-leash, once they are voice control trained.

If you like big trees and winding trails, try:

- Mercedale Hillside
- Island Crest Park
- SE 53rd Open Space
- North Mercedale Park
- Upper Luther Burbank Park
- Pioneer Park, NW & SE Quadrants

If you like open lawn areas, try:

- Aubrey Davis Park
- Homestead Field (while sports fields are not in use)

WHAT DOES 'VOICE / SIGNAL CONTROL' MEAN?

Voice or signal control is not as easy as it sounds! A properly trained off-leash dog under voice and/or signal control:

- Immediately returns to person in control when signaled or called
- Does not charge, chase, jump on or display aggression toward other people or animals
- Does not cause any physical or property damage
- Is always within sight of the person in control

OFF-LEASH AREAS

Luther Burbank Park

- Fenced
- Sand base
- Small/shy dog designated area
- Water access

Wildwood Park

- Unfenced
- Large lawn area

ON-LEASH ONLY

- NE Quadrant of Pioneer Park
- Deane's Children's Park (Dragon Park)
- Luther Burbank Park (except off-leash area)

NO DOGS ALLOWED, ANYTIME

- Any school property or facility
- Any playground
- Any sports court (tennis, basketball, etc)
- Any synthetic turf field
- Any sport field while practice or game is in progress

PUBLIC SWIMMING AREAS

*No dogs allowed May 1 - Sep 30
Dogs allowed on leash between Oct 1 - Apr 30*

- Luther Burbank Park
- Groveland Beach
- Clarke Beach
- Calkins Landing

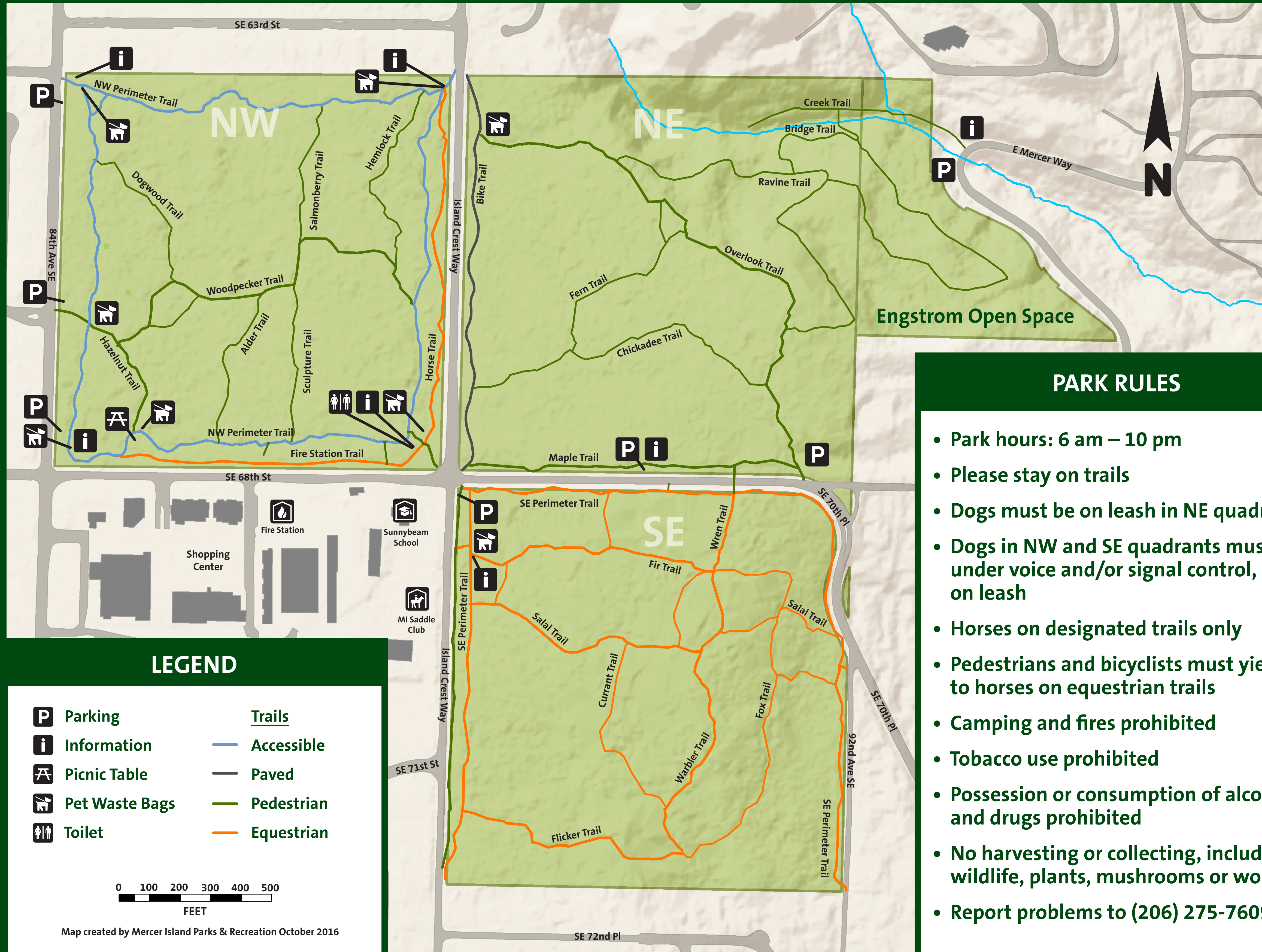


Discussion



CITY OF MERCER ISLAND
PARKS & RECREATION

Pioneer Park & Engstrom Open Space



PIONEER PARK SIGN INVENTORY 2016

NW Quadrant

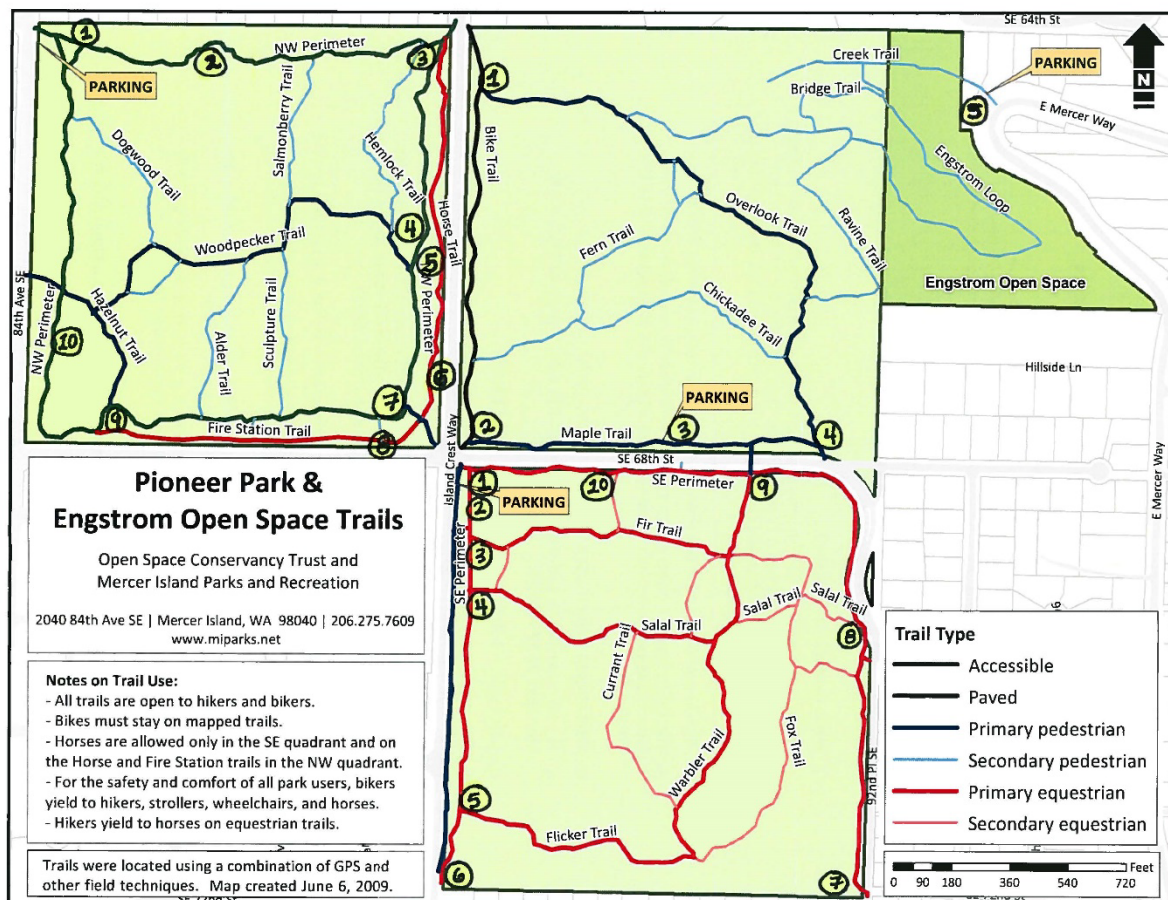
- 1 Map sign
Map box
DOG OWNERS (cites MI code regarding voice/signal control)
- 2 Recycling in Nature
- 3 Entrance sign
Map sign
Map box
Tobacco-free
Equestrian symbol with arrow
Attention Dog Owners! (voice/signal control)
- 4 Earth to Sky
- 5 Equestrian symbol with arrow
- 6 Map kiosk (city and public bulletin boards)
Map sign
Map box
DOG OWNERS (cites MI code regarding voice/signal control)
Tobacco-free
NO HARVESTING
Certified Wildlife Habitat
- 7 City Vehicles Only
No parking – tow zone
- 8 City vehicles only
No parking – tow zone
- 9 Map sign
Map box
Tobacco-free
- 10 Forest Succession

NE Quadrant/Engstrom OS

- 1 Dogs Must Be On Leash
Map box
NO HARVESTING
- 2 Entrance sign
Dogs Must Be On Leash
NO HARVESTING
- 3 Map sign
Map box
NO HARVESTING
Parallel parking only
- 4 Dogs Must Be On Leash
NO HARVESTING
- 5 Dogs Must Be On Leash
Map sign and map box missing!

SE Quadrant

- 1 Utility Corridor Vegetation Management Project
- 2 Attention Dog Owners! (voice/signal control)
NO HARVESTING
Yield
- 3 Map sign
Map box
Attention Dog Owners! (voice/signal control)
NO HARVESTING
Tobacco-free
Yield
- 4 Yield
- 5 Yield
- 6 Yield
- 7 Yield
- 8 Yield
- 9 No Horses Permitted
Yield
- 10 Yield













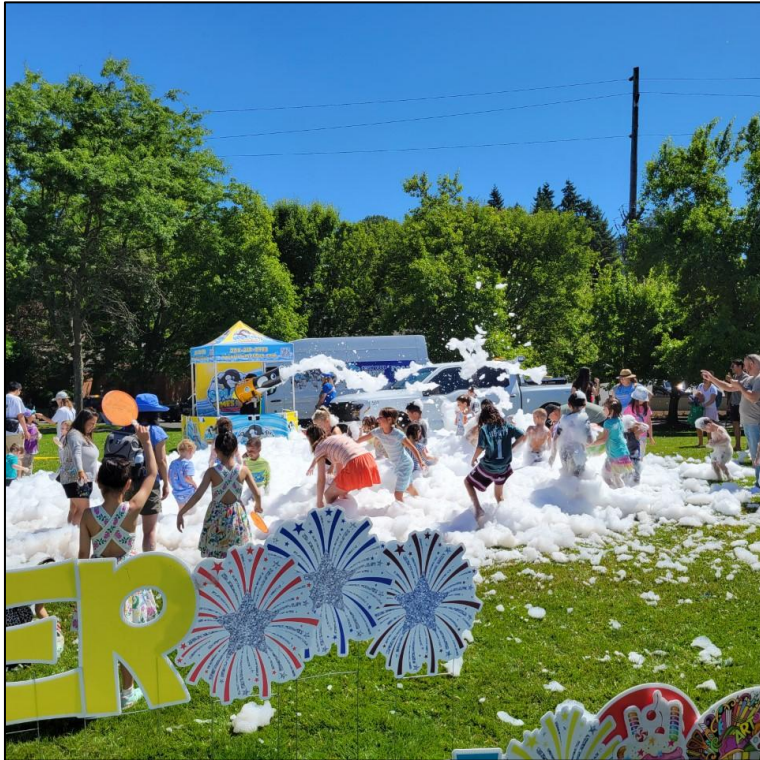


Department Report July 17th, 2025

Open Space Conservancy Trust



Summer Celebration- Thank you!





2025

MOSTLY MUSIC IN THE PARK

PRESENTED BY:



**THURSDAYS
6:30 - 8:30PM
MERCERDALE PARK**

JULY 17

PAPERBACK WRITER | BEATLES TRIBUTE

JULY 24

MIMX | MERCER ISLAND COVER BAND

JULY 31

GIMME SHELTER | ROLLING STONES TRIBUTE

AUG 7

BRICKHOUSE | 70'S DISCO FUNK

AUG 14

PIONEER SQUARES | CLASSIC ROCK VARIETY

AUG 21

PROM DATE MIXTAPE | 80'S NEW WAVE

SPONSORED BY:



Playground Replacements – Roanoke & First Hill

- **Roanoke Park:** Poured in place surfacing finished, pouring remaining concrete, installing site furnishings and vegetation restoration. Opening TBD this summer
- **First Hill Park:** Permits have been issued, and City staff are finalizing the construction schedule with the project team.



Playground Replacements - Deane's Children's Park

- Take the online survey – open July 12 through August 4 - share your input on preliminary park designs and preferences for different types of play equipment in the park.
- Visit the Deane's Children's Park booth at two upcoming community events! Check out early park designs developed from community feedback, and share your thoughts on the look, feel, and character of play structures for the park.
 - Summer Celebration on Saturday, July 12 from 10:30 AM - 3:00 PM at the Public Works Area on 77th Avenue SE
 - Mostly Music in the Park on Thursday, July 31 from 6:30 PM - 8:30 PM at Mercerdale Park (3009 77th Avenue SE)



Luther Burbank Park Sport Courts

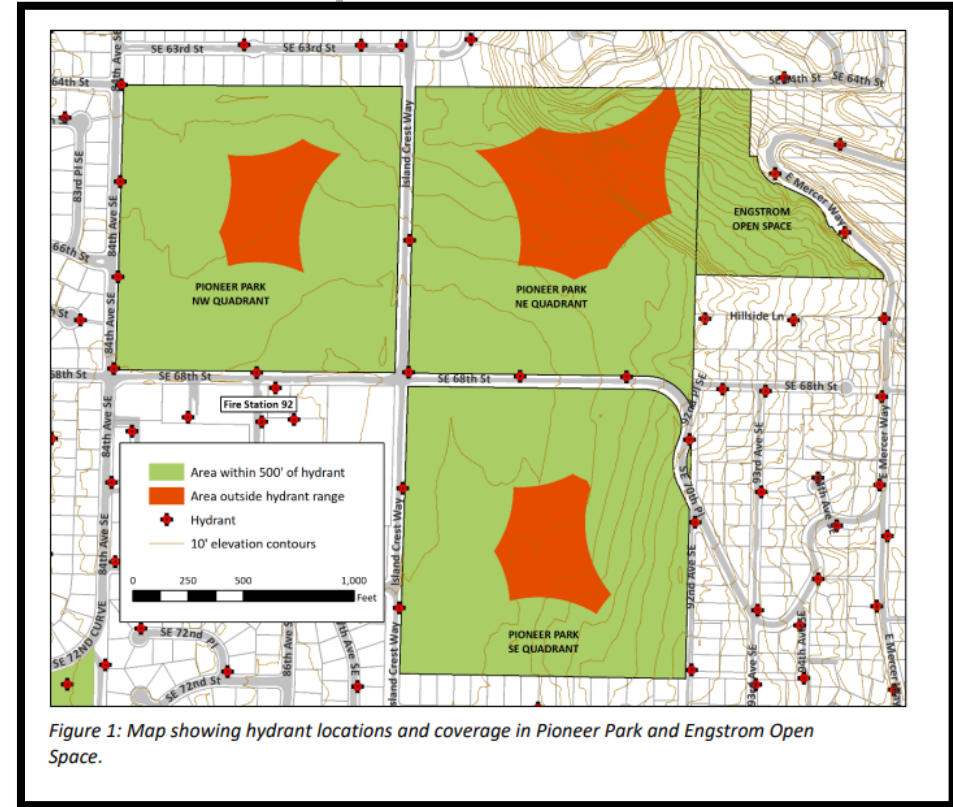
- Courts are finished and mural *Summer in the Wetlands* has been restored
- Crew will be posting signage for short maintenance closures throughout the summer



www.mercerisland.gov/lbpcourts

Appendix M: Pioneer Park and Engstrom Open Space Fire Management Plan

- Pioneer Park Forest Management Plan
- This time of year we get a lot of customer service inquiries
- Updated in 2022 collaboration with MIFD
- Staff in contact with Eastside Fire and Rescue for neighbor resources



- <https://www.mercerisland.gov/parksrec/page/pioneer-park-forest-management-plan-2003-amended-2022>

Volunteer and Outreach events:

- 7/19 Restoration Event, SE 53rd Open Space
- 7/25 BAT Night Luther Burbank Park
- 7/26 Restoration Event, Pioneer Park
- 7/31 Restoration Event, Upper Luther Burbank
- Please RSVP mercerisland.gov/calendar



2025 Open Space Conservancy Trust Board Meeting Schedule

- January 16th
- April 29th (Rescheduled)
- July 17th
- October 16th

*Quarterly meetings on the third Thursday of the month.
Meetings will take place from 5pm-7pm.*

January						
S	M	T	W	T	F	S
				1	2	3
4	5	6	7	8	9	10
11	12	13	14	15	16	17
18	19	20	21	22	23	24
25	26	27	28	29	30	31

February						
S	M	T	W	T	F	S
						1
2	3	4	5	6	7	8
9	10	11	12	13	14	15
16	17	18	19	20	21	22
23	24	25	26	27	28	

March						
S	M	T	W	T	F	S
						1
2	3	4	5	6	7	8
9	10	11	12	13	14	15
16	17	18	19	20	21	22
23	24	25	26	27	28	29
30	31					

April						
S	M	T	W	T	F	S
				1	2	3
4	5	6	7	8	9	10
11	12	13	14	15	16	17
18	19	20	21	22	23	24
25	26	27	28	29	30	

May						
S	M	T	W	T	F	S
						1
2	3	4	5	6	7	8
9	10	11	12	13	14	15
16	17	18	19	20	21	22
23	24	25	26	27	28	29
30	31					

June						
S	M	T	W	T	F	S
						1
2	3	4	5	6	7	8
9	10	11	12	13	14	15
16	17	18	19	20	21	22
23	24	25	26	27	28	29
30						

July						
S	M	T	W	T	F	S
						1
2	3	4	5	6	7	8
9	10	11	12	13	14	15
16	17	18	19	20	21	22
23	24	25	26	27	28	29
30	31					

August						
S	M	T	W	T	F	S
						1
2	3	4	5	6	7	8
9	10	11	12	13	14	15
16	17	18	19	20	21	22
23	24	25	26	27	28	29
30	31					

September						
S	M	T	W	T	F	S
						1
2	3	4	5	6	7	8
9	10	11	12	13	14	15
16	17	18	19	20	21	22
23	24	25	26	27	28	29
30						

October						
S	M	T	W	T	F	S
						1
2	3	4	5	6	7	8
9	10	11	12	13	14	15
16	17	18	19	20	21	22
23	24	25	26	27	28	29
30	31					

November						
S	M	T	W	T	F	S
						1
2	3	4	5	6	7	8
9	10	11	12	13	14	15
16	17	18	19	20	21	22
23	24	25	26	27	28	29
30						

December						
S	M	T	W	T	F	S
						1
2	3	4	5	6	7	8
9	10	11	12	13	14	15
16	17	18	19	20	21	22
23	24	25	26	27	28	29
30	31					