



ARTS COUNCIL

REGULAR HYBRID MEETING

Wednesday, April 15, 2026 | 5:30pm

BOARD MEMBERS:

Chair: Jonathan Harrington
Vice Chair: Suzanne Skone
Councilors: Irene Rajagopal, Pam Rock,
Katie Kratzer, and Smriti Agarwal

LOCATION & CONTACT

MICEC – Slater Room Council Chambers
and via Zoom
8236 SE 24th Street | Mercer Island, WA 98040
Phone: 206.275.7600 | www.mercerisland.gov

We strive to create an inclusive and accessible experience. Those requiring accommodation for meetings should notify the Staff Liaison's Office 3 days prior to the meeting at 206.795.8518 or by emailing Katie.Herzog@mercerisland.gov.

The virtual meeting will be broadcast live on Zoom and recorded and saved on the City's [YouTube Channel](#)

Individuals wishing to speak live during Public Appearances (public comment period) must register their request with staff at **206.275.7861** or [email](#) before 4 PM on the day of the Arts Council meeting. Each speaker will be allowed three (3) minutes to speak.

Join the meeting at 5:30 PM (Appearances will start sometime after 5:30 PM) by:

- 1) **Telephone:** Call 253.215.8782 and enter Webinar ID 891 2336 1265 and Password 076260.
- 2) **Zoom:** Click [this link](#) (Webinar ID 891 2336 1265 and Password 076260)
- 3) **In person at 5:30 PM:** Mercer Island Community & Event Center - 8236 SE 24th Street, Mercer Island

CALL TO ORDER & ROLL CALL - 5:30 PM

PUBLIC APPEARANCES

STAFF LIAISON REPORT

1. **Staff Liaison Report and Planning Schedule**

REGULAR BUSINESS

2. **Approve the minutes of the January 21, 2026 Regular Hybrid Meeting**
Recommended Action: Approve minutes.
3. **AC26-05: Clarke and Groveland Joint Infrastructure Plan – Public Art Opportunities**
Recommended Action: Discuss opportunities for public art integration as part of the Clarke and Groveland Joint Infrastructure Plan
4. **AC26-06: Standing Strong Veterans Pergola – Cost Estimates, Appropriate Use and Maintenance Guidelines**
Recommended Action: Recommend staff include Pergola improvements in the 2027-2028 biennial operating budget and endorse the draft Pergola Appropriate Use and Maintenance Guidelines

OTHER BUSINESS

5. **Absences**

ADJOURNMENT



**Department Report
[Placeholder]
Coming soon**



ARTS COUNCIL 2026 PLANNING SCHEDULE

Items are not listed in any particular order.
Agenda items & meeting dates are subject to change.

REMINDER: NO MEETINGS IN AUGUST

JULY 15, 5:30 PM Absences:		STAFF WORK TUE	AGENDA GO LIVE WED
TIME/TOPIC		STAFF	
	Chair & Vice Chair Elections		
	ACXX-XX: Art in Public Places 6-Year Spending Plan	Sarah Bluvus	
	ACXX-XX: 2025 Recreation Division Annual Report	Katie Herzog	
	ACXX-XX: 2027-2028 City Arts & Culture Workplan Priorities	Katie Herzog	

OCTOBER 21, 5:30 PM Absences:		STAFF WORK TUE	AGENDA GO LIVE WED
TIME/TOPIC		STAFF	
	ACXX-XX: Update Arts & Culture Comprehensive Plan		
	ACXX-XX: 2025-2026 Workplan Update	Katie Herzog	
	ACXX-XX: AIPP Annual Update	Sarah Bluvus	
	ACXX-XX: GHOSG Activation Plan Kick-Off	Sarah Bluvus	



ARTS COUNCIL MINUTES

REGULAR HYBRID MEETING

Wednesday, January 21, 2026

CALL TO ORDER

Chair Harrington called the meeting to order at 5:32pm.

ROLL CALL

Chair Jonathan Harrington and Councilors Pam Rock, Katie Kratzer, and Irene Rajagopal were present.

Vice Chair Suzanne Skone & Councilor Hannah Youn were absent

City Clerk Andrea Larson, Recreation Manager Ryan Daly, Supervisor Katie Herzog, and Recreation Specialist Raven Gillis were present.

PUBLIC APPEARANCES

Robert Harper, Mercer Island resident, addressed the Arts Council regarding the Standing Strong Veterans Pergola at Mercerdale Park.

STAFF LIAISON REPORT

1. Staff Liaison Report & Planning Schedule Update

Katie Herzog, Recreation Supervisor, reported on the following:

- Updates
 - Gateway Installation Damage
 - Deane's Children's Park Site Plan
 - Boards & Commission Recruitment
- Programs/Events
 - December Events!
 - City of Mercer Island's Public Art and Photography Show & Reception
 - MIVAL Art Workshops
 - 2026 Lunar New Year with MICA
 - Senior Resource Fair
 - Winter Programs
 - Nancy Stewart's Free Guitar Classes
 - Open Art Studio with Irene Rajagopal
- Arts Council Planning Schedule

REGULAR BUSINESS

2. Approval of Minutes

Minutes from the October 15, 2025, Regular Meeting

It was moved by Rock; seconded by Kratzer to:

Approve the minutes from the October 15, 2025, Regular Meeting.

Passed: 4 – 0

3. AC26-01: Guiding Documents Workshop

Andrea Larson, City Clerk, Ryan Daly, Recreation Manager, and Katie Herzog, Recreation Supervisor, presented. Councilors asked questions and engaged in discussion.

4. AC 26-02: MICEC Gallery Viewing & Reception

Katie Herzog, Recreation Supervisor, presented. Councilors attended the Art Reception in the MICEC Gallery and engaged with MIVAL and community members.

The Arts Council attended the Art Reception from 6:47pm to 7:20pm

OTHER BUSINESS

5. Absences

Councilors Kratzer & Rajagopal may not be able to attend the February 18 Special Meeting in person and will try to attend via Zoom.

Chair Harrington asked for a motion to excuse Vice Chair Skone and Councilor Youn's absence.

It was moved by Rock; seconded by Rajagopal to:

Excuse Vice Chair Skone and Council Youn's absence from the meeting

Passed: 4 – 0

ADJOURNMENT

The Regular Hybrid Meeting adjourned at 7:27pm.



ARTS COUNCIL STAFF REPORT

AC26-05
April 15, 2026
Regular Business

AGENDA ITEM INFORMATION

TITLE:	AC26-05: Clarke and Groveland Joint Infrastructure Plan – Public Art Opportunities	<input checked="" type="checkbox"/> Discussion Only
RECOMMENDED ACTION:	Discuss opportunities for public art integration as part of the Clarke and Groveland Joint Infrastructure Plan	<input type="checkbox"/> Action Needed: <input type="checkbox"/> Motion <input type="checkbox"/> Ordinance <input type="checkbox"/> Resolution

STAFF:	Sarah Bluvas, CIP Project Manager	
COUNCIL LIAISON:	n/a	
EXHIBITS:	<ol style="list-style-type: none"> 1. Project Location Map 2. Concept Alternatives Engagement Summary 3. Preferred Plan – Clarke Beach Park 4. Preferred Plan – Groveland Beach Park 5. Guidelines for Administering the Mercer Island Public Art Program 	

SUMMARY

PROJECT INITIATION

Developed in the 1960s and 1970s, Clarke and Groveland Beach Parks (Exhibit 1) are two of three major public waterfronts located on Mercer Island. These parks offer amenities such as docks, swimming areas, concrete bulkheads, walking paths, picnic and barbeque areas, restroom facilities, and more. However, many of these features are at or nearing the end of their useful life and will need to be replaced or removed soon. Waterfront access at both parks is located at the bottom of steep hills, and accessibility improvements must be evaluated where feasible.

The [2022 Parks, Recreation, and Open Space Plan \(PROS Plan\)](#) identified the need for a joint planning effort to efficiently prioritize capital projects for these parks and to navigate the challenging regulatory environment for implementing shoreline improvements. The City Council approved this joint planning effort with the 2023-2024 Biennial Budget and Capital Improvement Program, and, in July 2023, the City engaged Berger Partnership as the design consultant to facilitate this planning work.

ASSESSMENT OF EXISTING CONDITIONS

An analysis of existing conditions at both beach parks was conducted from August 2023 to December 2024 and included:

- Topographic surveys, bathymetric (underwater topography) surveys, and delineation of the ordinary high-water mark (OHWM)
- Condition assessments of the in-water structures, including docks, swim enclosures, and concrete bulkheads
- Accessibility audit of the existing restroom facilities
- Critical area reconnaissance
- Geotechnical review to inform future study and permitting

- Background survey to gather information on current community uses, access challenges, recreational opportunities, and other needs to be considered in the planning process (229 responses)

A high-level summary of findings from the existing conditions assessment is provided below.

Condition of Overwater Structures

The overwater structures at Clarke have reached the end of their useful lives, and immediate repairs are recommended to prevent further deterioration. Overwater structures at Groveland are in fair to good condition and should be monitored with routine inspections to minimize further deterioration.

Geotechnical Review

Both sites show signs of soil settling, including under asphalt footpaths, at beach areas, and near the playground at Groveland. Specific issues at Clarke Beach include a sink hole beneath the concrete steps, which was repaired by Parks Maintenance staff in fall 2023 but may worsen due to continual erosion. Chronic settlement at Groveland Beach is causing a stormwater outfall pipe to fracture. Further geotechnical investigation will be required during the design and construction of improvements at both parks to address ongoing soil settling.

Restroom Accessibility

Restroom facilities at both parks do not comply with federal and local accessibility standards. Non-compliant conditions include inadequate maneuvering clearances and turning space, lack of wheelchair-accessible stalls, inaccessible reach heights and amenities, and inadequate accessible paths to the buildings. Some issues could be resolved with little impact on the existing structures, while others require significant alterations to the buildings and plumbing systems.

Background Survey on Community Uses and Needs

Currently, the most common reason for visiting both parks is beach access, followed by strolling/walking at Clarke and swimming at Groveland. The community's primary concerns include accessibility, park maintenance, amenities (such as picnic tables and trash receptacles), and park safety.

Staff presented the existing conditions to the City Council on March 18, 2025, and received authorization to move forward with developing a Joint Infrastructure Plan for Clarke and Groveland Beach Parks. The City Council identified the following priorities for the plan:

1. Dock and beachfront improvements
2. Shoreline erosion control and stabilization
3. ADA accessibility
4. Other amenities, such as restrooms, wayfinding/signage, and parking

The joint infrastructure plan will include preferred plans and cost estimates for both parks that will be further developed and implemented through future capital improvement programs as resources allow.

COMMUNITY ENGAGEMENT SUMMARY – DESIGN CONCEPT ALTERNATIVES

From October to December 2025, the project team conducted in-person and virtual engagement to collect community input on three design concept alternatives developed for each park. Each concept generally represented a different level of investment in park features, with individual elements designed to be interchangeable. For example, a dock configuration from one Clarke Beach concept and a picnic area design from another could be combined in the preferred plan. Community members were encouraged to “mix and match” their preferred elements as they participated in outreach opportunities.

Key themes from this community engagement effort included:

Clarke Beach Park

- Strong support for accessibility overall
- Preference for a combination of grass areas, tiered seating, and natural features at the waterfront
- Strong preference for two pier structures (either repaired or replaced) over a single pier
- Support for amenities (picnic areas, benches, etc.) that facilitate individual rather than group experiences
- Overall, improving dock/pier amenities is most important for the infrastructure plan, while providing new play opportunities is least important.

Groveland Beach Park

- Preference for grass seating areas and picnic pockets at the waterfront
- Strong support for a new floating dock with an expanded platform and/or detached floating dock
- Preference for upgrades to the play area in the existing location, including adding seating
- Interest in a boardwalk and/or viewing deck, but priority should be given to making improvements to existing infrastructure first
- Overall, improving dock/pier amenities is most important for the infrastructure plan, while improving play opportunities and enhancing accessible pathways are least important.

A detailed summary of this engagement is provided in Exhibit 2.

PREFERRED INFRASTRUCTURE PLAN

The project team refined the design concepts into a preferred plan for each park (Exhibits 3 and 4). The preferred plans reflect input received during the community engagement process, feedback from the Parks and Recreation Commission, considerations of site constraints, and City staff input. A summary of elements included in each preferred plan is provided below. Staff will review the preferred plans during the Arts Council meeting.

Clarke Beach Park

- **Waterfront Amenities:** The preferred plan removes the concrete bulkheads to support shoreline restoration and replaces them with gradual beach transitions, a gravel mix for fish habitat, and natural beach elements such as logs, boulders, and plantings. The enclosed swim area, including the sheet pile wall, would be removed and replaced with a rope-delineated swim area to maintain informal swimming opportunities. A flat grass area near the existing picnic area, along with concrete seat steps, provides additional space for lounging. The restroom would be replaced with a gender-neutral facility.
- **Pier Configuration:** Both existing piers would be restored in their current configuration. Shoreline vegetation between the piers would be enhanced, and the trail leading to the secondary pier at the south end of the park would be improved.
- **Upland Improvements:** The preferred plan maintains and renovates the existing picnic area as well as improves existing pedestrian connections to East Mercer Way.
- **ADA Accessibility:** An ADA-accessible path would connect the parking lot to the waterfront. Existing ADA parking stalls would be improved and expanded.

Groveland Beach Park

- **Waterfront Amenities:** The preferred plan removes the concrete bulkhead and replaces it with a gradual transition from sand beach to gravel mix to support fish habitat while maintaining a sandy swim beach. A wide grass terrace with oversized seat steps offers additional space for lounging, and new paths

provide accessible routes from the restroom to the dock and the beach. The restroom would be updated and/or replaced with a gender-neutral stall facility.

- **Dock Configuration:** The existing swim dock would be replaced with a new pier structure that includes a floating swim dock, a fixed pier platform with a diving board and hammock, and two gangway connectors.
- **Upland Improvements:** The preferred plan replaces the existing playground with a nature-inspired play area for ages 2-12+. Improvements to the trail and stairs at the south end of the parking lot enhance access to the beach. The preferred plan also identifies a future opportunity for an ADA-accessible boardwalk extending from the north end of the parking lot to a new overlook seating area and connection to the play area.
- **Teen Hangout Space:** A designated teen hangout space is identified on the beach that would be refined with Mercer Island youth/teens during future design efforts.

PUBLIC ART INTEGRATION – OPPORTUNITIES

During the presentation, staff will provide the Arts Council with an overview of the project and seek input on opportunities to integrate public art and/or placemaking elements using the 1% for Art in Public Places funding generated by future capital projects that will result from the final plan. Capital projects for each park may be implemented in phases; at this stage, staff are presenting a selection of potential public art opportunities to consider incorporating into the final Joint Infrastructure Plan. Identified projects would be implemented using the Guidelines for Administering the Mercer Island Public Art Program as outlined in the 6-Year Work Plan for Art in Public Places (Exhibit 5).

NEXT STEPS

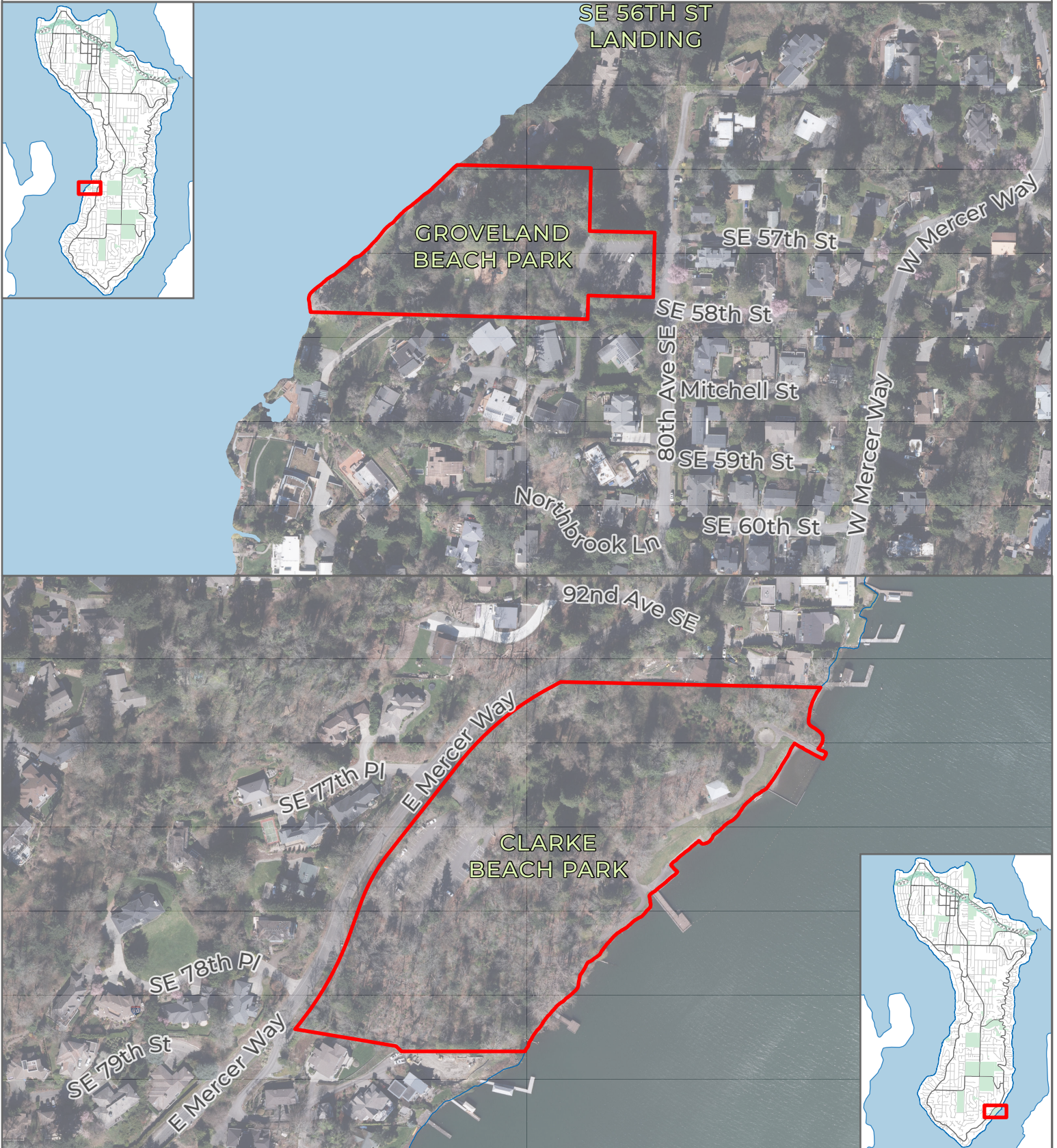
Staff will compile Arts Council input on preferred public art opportunities and document them in the final Joint Infrastructure Plan. Review and adoption of the plan is expected to conclude by the end of 2026. The Arts Council will be reengaged on specific public art projects as future capital projects for Clarke and Groveland Beach Parks are developed.

RECOMMENDED ACTION

Discuss opportunities for public art integration as part of the Clarke and Groveland Joint Infrastructure Plan.

90.25.0013 Clarke and Groveland Beach Parks Joint Infrastructure Plan

Item 3.



 Project Area



CLARKE & GROVELAND BEACH PARKS JOINT INFRASTRUCTURE PLAN

ENGAGEMENT SUMMARY

CONCEPT ALTERNATIVES

PROJECT OVERVIEW

Developed in the 1960s and 1970s, Clarke and Groveland Beach Parks are two of three major public waterfronts located on Mercer Island. These parks offer amenities such as docks, swimming areas, concrete bulkheads, walking paths, picnic and barbeque areas, restroom facilities, and more. However, many of these features are at or nearing the end of their useful life and will need to be replaced or removed soon. Waterfront access at both parks is located at the bottom of steep hills, and accessibility improvements must be evaluated where feasible.

The 2022 Parks, Recreation and Open Space Plan (PROS Plan) identified the need for a joint planning effort to efficiently prioritize capital projects for these parks and to navigate the challenging regulatory environment for implementing shoreline improvements. From August 2023 to December 2024, the project team conducted site assessments and community engagement to learn about the existing conditions and current uses of each park. On March 18, 2025, the City Council authorized staff to move forward with developing the Joint Infrastructure Plan for Clarke and Groveland Beach Parks. When adopted, the infrastructure plan may address the following areas:

1. Dock and beachfront improvements
2. Shoreline erosion control and stabilization
3. ADA accessibility
4. Other amenities, such as restrooms, wayfinding/signage, and parking

ENGAGEMENT PROCESS

Technical assessments and preliminary community engagement informed the development of three design concepts for each park that were shared with the community in fall 2025. Concepts reflected a different level of investment for various park features, including dock/pier configurations, beach improvements, and upland improvements, and features within each concept were designed to be interchangeable, providing a “mix-and-match” approach for community members to determine their preferences for each park. For example, a community member may have favored the pier configuration in concept 1 for Clarke Beach and preferred the beach improvements identified in concept 2 for the park. Community engagement opportunities were designed to collect feedback on individual park features as well as overall input to inform the preferred plan for each park.

From October to December 2025, the project team shared virtual open house presentations and digital concept boards as well as conducted a community-wide survey on Let’s Talk; hosted project booths at the Mercer Island Chinese Association’s Mid-Autumn Festival and the City’s Town Center Trick-or-Treat; and met with park neighbors and students at Islander Middle School to solicit feedback on the concepts.

Opportunities for engagement were promoted through a variety of channels, including:

- Mailer to park neighbors (1,000 ft mailing radius, 400+ mailers sent)
- Let’s Talk and social media posts
- MI Weekly e-newsletter articles
- Direct outreach to community partners such as the Mercer Island School District, the Mercer Island Preschool Association, and the Rotary Club of Mercer Island
- A-frame posters staged at Clarke Beach, Groveland Beach, Mercerdale, and Luther Burbank parks

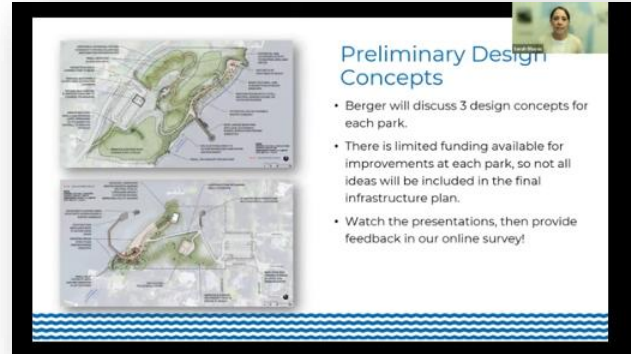
Unique URL links and QR codes were set up for the various promotional channels to track the effectiveness of each outreach effort. Channels that received the most engagement were the MI Weekly e-newsletter (146 clicks), social media posts (92 clicks), and posters at the parks (6 QR code scans).

The following sections summarize key themes and findings from these engagement activities.

Virtual Open House Presentations & Digital Concept Boards

The project team recorded presentations to share the existing conditions and walk through the design concepts for each park. Community members were invited to learn about the project and concepts through the “virtual open house,” then take the accompanying survey.

Each concept was also presented on digital boards on Let's Talk. Boards included overall designs and shoreline enlargements to provide greater detail on proposed waterfront features. Community members could review these boards in advance and reference them while completing the survey.



During the community engagement period from October 3 to November 3, 2025, the presentations were viewed 124 total times, the concept boards were downloaded a total of 653 times, and the Let's Talk page was visited more than 1,000 times.

Design Concepts Survey

An online survey was open from October 3 to November 3, 2025, and received 180 total responses. It asked about preferences for waterfront amenities, pier/dock configurations, and upland improvements at each park, as well as park-specific questions regarding accessibility and recreation priorities. Respondents could provide input for one or both parks.

Survey Demographics

Approximately 58% of survey respondents provided input for Clarke Beach, and 73% for Groveland Beach. Visitors to both parks primarily arrive by car or walking, with nearly half of respondents for each park reporting that they visit on a weekly or monthly basis.

More than half of respondents resided in the central part of the island, between SE 40th and SE 68th Street, while 29% live south of SE 68th Street and 17% live north of SE 40th Street. Most survey respondents (60%) are between the ages of 20 and 54, and over half of respondents have at least one child under 18 living at home.

Clarke Beach Park Survey Results

- ADA Accessibility
 - 62% of respondents said an accessible path from the parking lot to the waterfront is very or somewhat important.
- North Waterfront: Three concepts were presented, varying in beach size, seating type, and play opportunities.
 - 50% preferred Concept 1: terraced seating and a large natural beach at the north end
 - Respondents emphasized maintaining swimming access, noting Clarke Beach as one of the “few safe, uncrowded swimming areas” on Mercer Island.
- Central Waterfront: Three options focused on the area near the picnic tables and the central pier.
 - 44% preferred Concept 2: a mix of large flat grass areas, tiered concrete seating, and natural waterfront
- Pier Configuration: Two concepts included two piers, and one concept included a single long pier.
 - 68% preferred two piers, either repaired or replaced.
- Upland Improvements

- Respondents favored small-scale, individual, or small-group experiences, including individual picnic tables and benches.
- Overall Amenities Prioritization
 1. Dock/pier enhancements
 2. Restroom upgrades
 3. Accessible paths to beach/beach amenities
 4. Gathering spaces/seating amenities
 5. New play opportunities
- Other Comments/Suggestions
 - Support for maintaining a natural character with minimal changes.
 - Mixed opinions on sandy beaches – some prefer it for swimming, others noted “dirty” sand beach.
 - Support for garbage cans, bike racks, outdoor showers, non-gender single stall restrooms, and more picnic tables.
 - Interest in motorboat-friendly design and temporary docking, plus support for kayak/small craft access.
 - Requests for more lighting and safety monitoring, especially at the small fishing pier area.
 - Deep personal/sentimental connection to the park.
 - Preference for lower investment at Clarke Beach, suggesting funds be focused on improvements at Groveland Beach.

Groveland Beach Park Survey Results

- Waterfront Amenities: Survey questions for Groveland Beach asked about a few different waterfront amenities.
 - Sand volleyball court: 32% had no preference; removing it slightly more popular than improving it (27% vs. 25%). Additional youth outreach conducted from December 2025 to March 2026 will inform final recommendations.
 - Restroom facility: outdoor rinse-off station rated high priority (127 responses). Changing rooms and small lockers were less important.
 - Beach and gathering area: respondents preferred large grass terraces and picnic pockets, though interest across all three concepts was fairly evenly split.
- Dock Configuration: Three options were presented for the swim dock.
 - While descriptions for concepts 2 and 3 were initially swapped, 80% preferred a dock with an expanded swim platform.
 - 54% prioritized adding a detached floating dock based on the survey images.
- Upland Improvements:
 - Play area & seating: 42% preferred upgrading the existing play area and adding more upland seating (Concept 3). Concepts 1 (pollinator garden + seating) and 2 (relocated volleyball court) each received approximately 28%.
 - Tree canopy boardwalk vs. viewing deck: 63% preferred prioritizing other upland improvements before adding either feature, with slightly more preference for a tree canopy boardwalk.
- Overall Amenities Prioritization
 1. Dock/pier enhancements
 2. Restroom upgrades
 3. Gathering spaces/seating amenities
 4. New play opportunities and accessible paths to beach/beach amenities
- Other Comments/Suggestions
 - Support for maintaining a natural character with minimal change.
 - Emphasis on ADA-friendly access where feasible, acknowledging topography challenges.
 - Mixed opinions on sand volleyball court: popular with some, but disagreement on opinions on relocating or removing.
 - Support for maintaining swimming access, a defining feature of the park.
 - Interest in better access for hand-powered watercraft.

Pop-Ups at Community Events

In October 2025, City staff promoted the planning process, shared the design concepts, and invited community members to complete the survey during three community events.

On October 5, 2025, staff engaged with more than 100 multi-generational attendees of the Mid-Autumn Festival hosted by the Mercer Island Chinese Association at the Mercer Island Community and Event Center. Attendees were invited to ask questions about the concepts and participated in a “vote with your own dollars” exercise for each park. Each participant received stickers representing a quarter, dime, nickel, and penny for each park, which they could use to prioritize investment across five categories for each park:

- Dock/pier enhancements
- Restroom upgrades
- New play opportunities
- Accessible paths to beach/beach amenities
- Gathering spaces/seating amenities



At Clarke, most participants “funded” restroom upgrades and new play opportunities with some or all their investment, while investment primarily went to new play opportunities at Groveland. These results are likely attributed to the large number of families with young children in attendance at the event.

On October 31, 2025, staff also hosted a project booth at the Town Center Trick-or-Treat event. Although it was a very rainy afternoon, more than 100 community members visited the booth to learn more about the project. Given the weather conditions, staff decided not to host the voting exercise and instead focused on promoting the survey and answering questions about the concepts for each park.

Additionally, project materials were shared with volunteers at the Arbor Day event at Clarke Beach on October 25, 2026.

Park Neighbor Engagement

To encourage park neighbors to participate in the engagement process, a mailer with project information and survey link/QR code was sent to residents living within a 1,000-ft radius of each park, resulting in more than 400 mailers to park neighbors. The mailer included an invitation to meet City staff at either park to discuss the planning process and specific neighborhood concerns and needs. One neighbor of Groveland accepted the offer to meet, and staff joined them for a park walk on October 16, 2025. Primary topics of discussion included:

- Plans for the sand volleyball court
- Potential direct impacts to neighbors on the property line, including noise issues
- Concerns about dock design and neighboring waterfront properties

Public comment provided by this community member is attached as Appendix A.

Mercer Island Student Engagement

Following preliminary discussions with the Parks & Recreation Commission about early engagement results, staff also conducted additional outreach to Islander Middle School (IMS) and Mercer Island High School to solicit student feedback about the volleyball court at Groveland Beach and other park needs. On December 11, 2025, staff met with 15 students

in grades 6-8 through the IMS Principal’s Student Advisory and received feedback about play and hangout opportunities at the parks. Additional engagement with high school students is underway, and outcomes will be incorporated into the final report for the joint infrastructure plan.

NEXT STEPS

From December 2025 to March 2026, the project team used feedback from this engagement process to refine the design alternatives into a preferred plan for each park. The preferred plan will be shared with the community on March 20, 2026, through Let’s Talk at www.mercerisland.gov/cgip, and the Mercer Island Parks & Recreation Commission (PRC) will begin discussions of the preferred plan on March 26, 2026. It is anticipated that the PRC’s recommendation of the Joint Infrastructure Plan for Clarke and Groveland Beach Parks will be transmitted to the Mercer Island City Council for review and adoption in fall 2026.

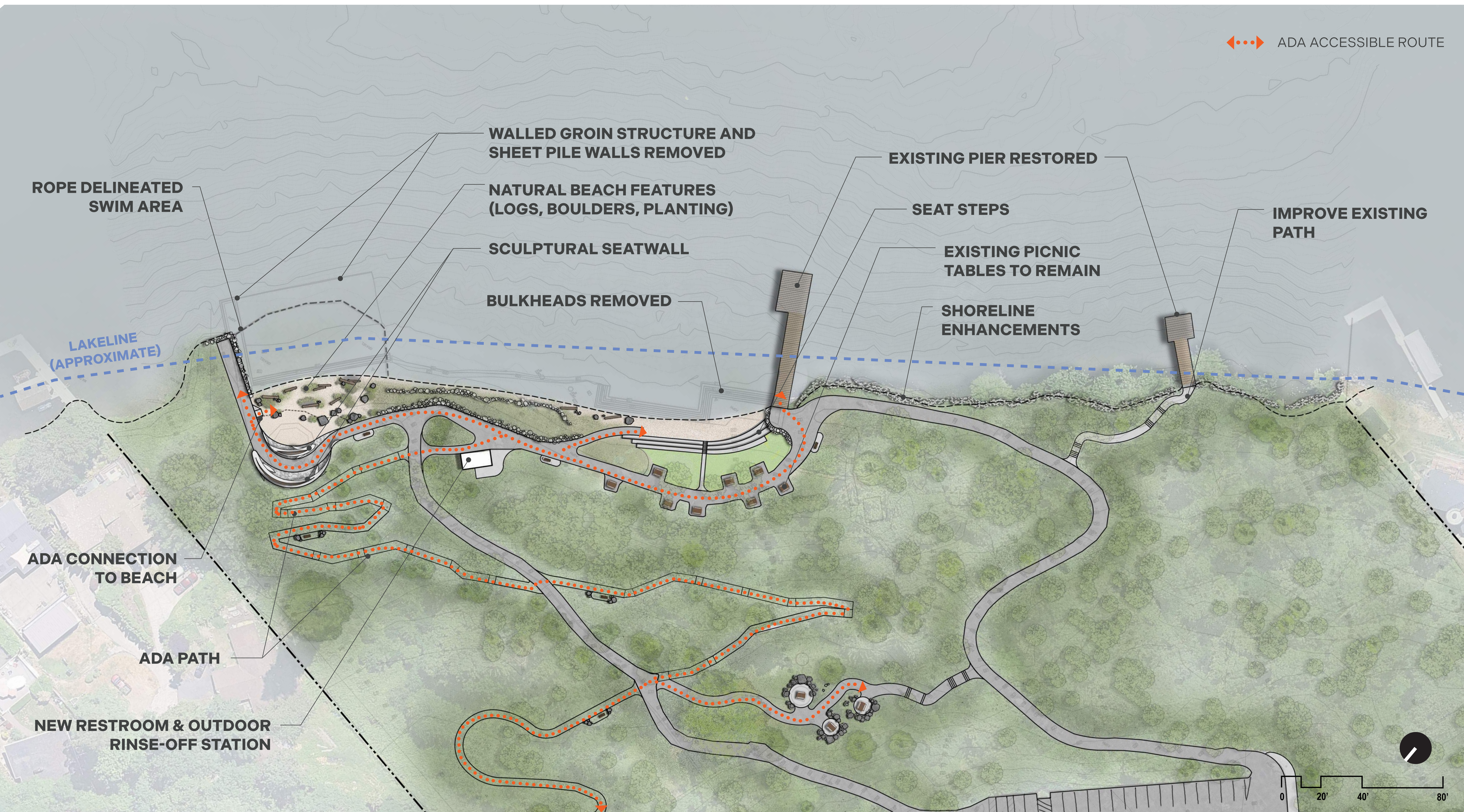
APPENDIX

Item 3.

Appendix A – Public Comment Provided by Groveland Beach Park Neighbor

1. **Noise Impact** – Volleyball play generates consistent yelling, cheering, swearing and ball impacts, and use of boom boxes especially during evenings and weekends, which disturbs nearby residents and lowers the quality of life.
2. **Attractive Nuisance** – The court attracts unsupervised teens and off-island groups after hours, creating liability risks and potential for vandalism or trespassing.
3. **Lack of Restroom Facilities** – With no restrooms nearby, players and spectators will use adjacent landscaping or residential areas, creating sanitation and hygiene issues.
4. **Parking Congestion** – Increased court accessibility will further overwhelm existing parking spaces.
5. **Increased Foot Traffic** – A court close to homes increases through-traffic by non-residents, potentially compromising neighborhood privacy and security.
6. **Late-Night Activity** – Even without lighting, some players may use the court after dark, leading to loitering, noise, and potential safety or law enforcement concerns.
7. **Property Value Impact** – Proximity to active recreational features like a volleyball court can negatively affect property values due to noise, traffic, and reduced privacy.
8. **Incompatibility with Residential Zoning Intent** – Active recreational use is better suited for center of the park areas and near restrooms, not near property lines or homes, where passive recreation is typically planned.
9. **Increased Litter and Debris** – Without nearby adequate trash facilities or restrooms, players will leave bottles, cups, diapers, food and other litter, creating maintenance and visual blight.
10. **Better Alternative Locations Exist** – Placing the court in a more central or buffered area of the park can still meet recreation goals without negatively affecting residents. A far better location is the 98 acre Luther Burbank park has ample space and ample rest room facilities.

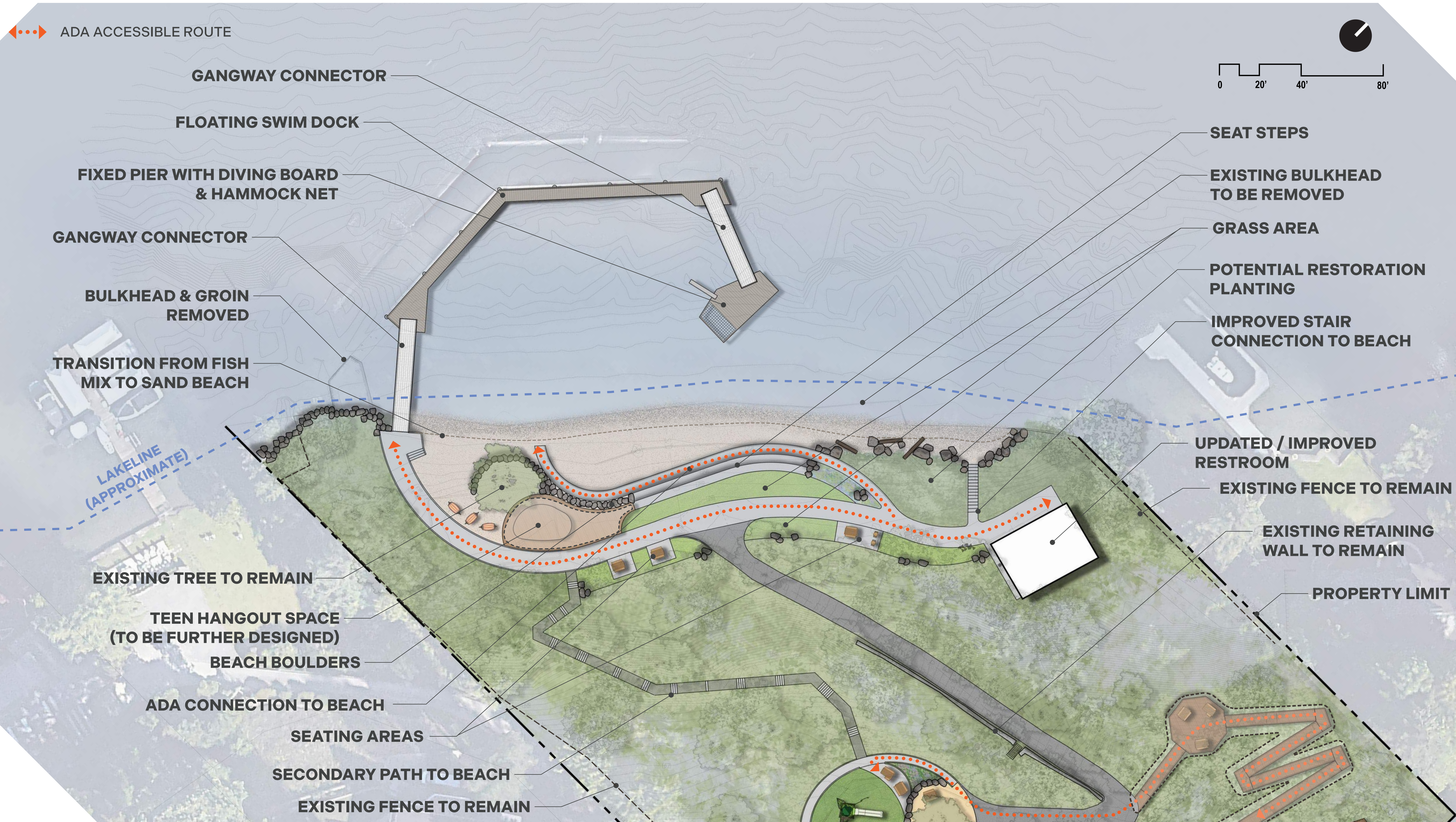
Joe



OVERALL PLAN



SHORELINE ENLARGEMENT



Appendix D. Guidelines for Administering the Mercer Island Public Art Program

These guidelines establish the procedures for administering the City of Mercer Island (“City”) public art program.

The Mercer Island Arts Council (“Arts Council”) and City staff oversee the public art program and are responsible for ensuring it is fair, equitable, and appropriate given the scope of a specific project and the evolving needs of the Mercer Island community.

The Mercer Island City Council (“City Council”) is responsible for approving public art projects as described in the City’s 6-Year Work Plan for Art in Public Places and, when necessary, may request process steps in addition to or different from those outlined in these guidelines.

This document outlines the following procedures:

- Developing a Public Art Project – The general process for review, approval, and launching a public art commission.
- Evaluating Submittals for Artist/Artwork Selection – The general process for evaluating artists and/or artworks submitted for a permanent public art acquisition, a public art donation, a proposal to temporarily exhibit art in public space, or another request deemed public art.
- Accepting Community-Initiated Project Proposals – The general process for reviewing and accepting community-generated proposals for a permanent public art acquisition or a request to temporarily exhibit art in public space.
- Deaccessioning Public Art – The general process for withdrawing a work or works from the public art collection.

Developing a Public Art Project

Procedure

When a new opportunity to commission a permanent work of public art is identified by the City, the following process will be used to seek approval of and launch the proposed project.

1. Establish a Public Art Committee.

The Arts Council, in collaboration with City staff, will appoint a Public Art Committee consisting of 1-2 Arts Council members, City staff, and relevant project stakeholders, which could include other City board members, Mercer Island residents, outside consultants, and/or others interested in the project.

2. Develop the proposed project scope.

The Public Art Committee is responsible for developing and proposing an appropriate project scope that may include, but not be limited to, the following:

- Artist selection methods: Methods may include Open Competition, Limited Competition, or Direct Selection.
- Project goals: Identify metrics for gauging the success of the project, such as goals for artist/artwork representation, community engagement, use of sustainable materials, etc.
- Project site and context: Describe the project's location, intent, and historical, cultural, or other significance (if relevant). If a specific location is not proposed, identify potential sites available for the project.
- Public benefit: Describe the expected public benefit of the project, including the significance of the selected site, theme, etc.
- Project budget and schedule: Include major milestones such as Selection Panel review period, City Council approval date, and estimated project completion/installation date.
- Submittal requirements: Basic requirements are outlined at the end of this section. Additional materials may be required based on the scope and needs of the project.
- Proposed Selection Panel: Identify individuals to serve on the Selection Panel, the group responsible for reviewing artist/artwork submittals and recommending an artist/artwork for selection for the project. (More information about the Selection Panel is detailed in the "Evaluating Submittals for a Public Art Project" section.)

3. Seek approval of project scope.

Once the proposed project scope is developed, the Public Art Committee will present it to the Arts Council for review and recommendation. Depending on the scope of the project, the Public Art Committee may seek endorsement from other City Boards or Commissions before presenting to the Arts Council. City staff will transmit the Arts Council's final recommendation to the City Council for approval of the project and authorization to open the project for submittals.

4. Open the project for submittals.

Following City Council approval, City staff will develop and issue a Request for Qualifications or Request for Proposals, as appropriate to and based on the approved project scope.

Submittal Requirements

Standard submittal requirements outlined in a Request for Qualifications include:

- **Narrative of artwork intent/approach:** The narrative should articulate the submitter's intent for the project, including how their work, process, and experience relate to the project. The narrative should explain how the proposed Artist/Artwork will meet the stated goals of the project.
- **Artist's vision/approach:** Describe the vision for the project, including the submitter's specific approach to the site, the themes, and/or the Mercer Island community in general. Include the submitter's personal and/or artistic approach to promoting Diversity, Equity, Inclusion, and Sustainability.
- **Community engagement approach:** Summarize how the submitter intends to engage the community in the creative process.
- **Artist's statement:** Provide a brief bio that can be used in future communications and promotions about the project.
- **Resume/CV:** Submit a current, professional resume. Artist Teams should submit resumes for each team member compiled into one document.
- **Images of previous work:** Provide up to five (5) images of previous work by the Artist or Artist Team that demonstrate the submitter's ability to complete the project. (JPEG format, 1920 pixels maximum on the longest size, 72 dpi, with compression settings resulting in the best image quality where the file size remains under 2MB.)
- **Ability to work within city government structure:** Describe the submitter's ability to successfully execute a public art project, including previous work with local governments or other experience working with municipal staff, elected official, volunteer boards, or others to complete public sector projects.
- **References:** Submit three (3) current references, including the reference's name, phone, e-mail, and title as well as a brief description of the reference's professional association to the submitter.

If the City decides to issue a Request for Proposals, the following additional submittal materials will be required:

- **Artwork concept design(s):** Provide concept designs, including potential site locations, for the proposed artwork(s). Include up to five (5) images, including sketches, plans, models, renderings, precedents, or concepts.
- **Cost estimates:** Provide cost estimates for each proposed art piece, including best estimates of current year material, artist time, and installation costs.

Evaluating Submittals for Artist/Artwork Selection

Procedure

When the City receives submittals for a permanent or temporary public art project, including for public art commissions administered by the City, requests for public art donation, and other requests deemed public art, a Selection Panel will review submittals and recommend a preferred selection. The Selection Panel may consist of the following individuals:

- Working artist generally recognized for producing quality work
- Resident with special interest in the proposed project – Based on the project scope and location
- Mercer Island Arts Council Member – Serves as the Chair of the Selection Panel
- Other Mercer Island Board or Commission Member(s) – Based on the project scope and location
- Mercer Island City Council Member
- City Staff – Non-voting member
- Other individuals as appropriate

City staff and the Arts Council will propose a Selection Panel to the City Council as part of the process to seek approval for a proposed public art project. Once a Selection Panel is approved, the following process will be administered.

1. Review submittals.

Panelists will individually review and preliminarily score submittals using the Four Public Art Pillars Selection Criteria outlined at the end of this section.

2. Convene the Selection Panel.

After individually reviewing the submittals, Panelists will meet to review each submittal, compare their preliminary scores, and rank the submittals. Depending on the Panel's rankings and the scope of the project, the Panel may choose to invite a finalist or finalists to a finalist interview. Finalists will be compensated with an honorarium, the amount of which will be determined based on the overall project budget but will not be less than \$500 per finalist.

3. Seek approval of artist or artwork selection.

Once the Selection Panel reaches a consensus, the Chair will report the Panel's decision to the Arts Council for review and recommendation. City staff will transmit the Arts Council's recommendation to the City Council for approval and budget appropriation (if necessary).

4. Implement the project.

Upon City Council approval, City staff will notify all finalists of the result and move forward with the appropriate administrative steps (execute a contract, complete the donor transfer, etc.). Staff will also identify specific milestones relevant to the project scope and timeline for communicating progress to the Arts Council.

Conflict of Interest

To avoid any conflict of interest or appearance thereof, any Panelist having an association with an applicant must disclose the association to the Selection Panel Chair immediately upon becoming

aware of such association. The Selection Panel Chair will determine if the association exempts the Panelist from discussion or dismissal from the Selection Panel.

Rejection of All Submittals

If the Selection Panel finds that no submittal conforms to the Selection Criteria, it may recommend that the Arts Council:

- Reject all submittals and request a new solicitation;
- Cancel the project; or
- Another option as identified by the Arts Council and/or City staff.

Four Public Art Pillars Selection Criteria

The criteria for selecting artists and/or artwork are based on Four Public Art Pillars outlined below.

Public Art Pillar	Evaluation Questions	Score
Aesthetic	<ul style="list-style-type: none"> • Quality – Does the proposal demonstrate high artistic merit? • Representation – Will the proposal add new mediums, materials, artmaking processes, styles/genres, and/or artists to the public art collection? • Originality and Innovation – Will the proposal bring something fresh and unique to the public art collection? • Sustainability – Is resource conservation thoughtfully considered for the design and creation of the proposed project? 	
Place	<ul style="list-style-type: none"> • Context – Does the proposal demonstrate understanding of the project site and its historical, cultural, and environmental context? • Functionality – How will the proposal integrate into and/or enhance site? • Sense of Identity – Will the proposal enhance and/or cultivate a strong sense of place for residents and visitors? 	
Connection	<ul style="list-style-type: none"> • Inspiration – Will the proposal provoke feeling in the viewer? • Collaboration – Does the proposal provide opportunities for Mercer Island residents, community groups, and others to participate in the public art process? • Diversity – Will the proposed project resonate with people of diverse abilities, backgrounds, and beliefs? • Community Cohesion – Will the proposal foster community dialogue and enhance community members' understanding of each other? • Inclusion & Accessibility – Does the proposal provide a safe and inclusive public art experience for all? 	
Longevity	<ul style="list-style-type: none"> • Staying Power – Does the proposal demonstrate appeal for future Mercer Island generations? • Collection Care – Can the proposed project be completed and maintained within budget? 	
		Total Score (out of 100)

Accepting Community-Initiated Project Proposals

Procedure

Occasionally, members of the Arts Council, the community, or local organizations may propose a public art project for the City's consideration. The City may choose to establish a formal "Call for Project Proposals" or accept proposals on a rolling basis. To properly evaluate these proposals, the following process will be used.

1. Intake proposal.

City staff review project proposals and determine, in consultation with Arts Council leadership, whether the proposal should be transmitted to the Arts Council for review.

2. Present proposal to the Arts Council.

When a proposal is sent to the Arts Council for review, the proposal author will be invited to present to the Arts Council at a regular or special meeting. Following the presentation, the Arts Council will review the proposal using the Four Public Art Pillars Selection Criteria and either:

- Preliminarily accept the proposal;
- Reject the proposal;
- Seek additional information from the proposal author; or
- Request other next steps as identified by the Arts Council and/or City staff.

3. Advance the project proposal.

If the Arts Council decides to preliminarily accept the proposal, they may choose to recommend the following:

- Add the project to the Project Opportunities List for consideration in a future biennium;
- Prioritize the project in the current biennium; or
- Another option as identified by the Arts Council and/or City staff.

Following preliminary acceptance, City staff will seek relevant approvals, which may include from other City departments impacted by the proposed project and the City Council.

Proposal Requirements

Community-initiated project proposals will include, but not be limited to, the following materials:

- Project overview
- Proposed location
- Design concepts
- Anticipated budget and funding strategy
- Demonstration of community support
- Description of public benefit
- Preferred project timeline

Deaccessioning Public Art

Deaccession is a procedure to permanently withdraw an artwork from the public art collection. All artworks owned by the City are eligible for deaccession. (For donated works, all legal documents relating to the donation will be consulted prior to beginning the deaccession process.)

City staff are responsible for assessing the public art collection and recommending deaccession needs to the Arts Council. Works will be carefully and impartially evaluated within the context of the entire collection, and staff may consult other qualified individuals, including the artist, an art conservator, an appraiser, a curator, and/or the City Attorney's office, before recommending deaccession. Additionally, staff may consider notifying and seeking input from community members, organizations, and other individuals before making deaccession recommendations to the Arts Council.

Criteria for Deaccession

A deaccession may be recommended for one or more of the following reasons:

- The artwork is being displaced from its current location and cannot be re-sited.
- The artwork has been damaged or has deteriorated, and repair is impractical or unfeasible.
- The condition or security of the artwork cannot be reasonably guaranteed by the City.
- The artwork endangers public safety.
- The artwork is not, or is only rarely, exhibited due to the lack of a suitable installation site.
- The artwork has been determined to be significantly incompatible or inferior in the context of the public art collection.
- The City wishes to replace the artwork with work of more significance by the same artist.
- The artwork requires excessive maintenance or has faults of design or workmanship.
- In the case of site-specific artwork, the artwork is destroyed by severely altering its relationship to the site.

Seeking Approval to Deaccession

After a work has been identified for deaccession, City staff will present the assessment to the Arts Council for review and recommendation to the City Council. Upon receiving the Arts Council's recommendation, City staff will transmit the recommendation to the City Council for approval at a regularly scheduled meeting. Once City Council approves the recommendation, City staff will move forward with finalizing the deaccession, including coordinating deinstallation needs, updating the public art record, and messaging to the public.

Disposing of Deaccessioned Artwork

Depending on the condition of the artwork and the conditions of the deaccession, City staff and the Arts Council may recommend that the work be:

- Returned to the artist;
- Traded for one or more works of comparable value by the artist;
- Sold in compliance with law and policies governing surplus property;
- Responsibly destroyed; or
- Responsibly disposed of in some other reasonable manner.



ARTS COUNCIL CITY OF MERCER ISLAND

AC26-06
April 15, 2026
Regular Business

AGENDA BILL INFORMATION

TITLE:	AC26-06: Standing Strong Veterans Pergola – Cost Estimates, Appropriate Use and Maintenance Guidelines	<input type="checkbox"/> Discussion Only <input checked="" type="checkbox"/> Action Needed: <input type="checkbox"/> Motion <input checked="" type="checkbox"/> Recommendation
RECOMMENDED ACTION:	Recommend staff include Pergola improvements in the 2027-2028 biennial operating budget and endorse the draft Pergola Appropriate Use and Maintenance Guidelines	

STAFF:	Katie Herzog, Interim Recreation Manager
EXHIBITS:	1. Draft Pergola Appropriate Use and Maintenance Guidelines

EXECUTIVE SUMMARY

This follow-up agenda bill builds on prior discussion under [AC 25-06](#) regarding the Standing Strong Veterans Pergola in Mercerdale Park.

At the Arts Council’s direction, at the [October 15, 2025](#) meeting, staff have:

- Developed refined cost estimates for potential improvements, including additional commemorative plaques and repainting of the pergola structure
- Prepared draft Appropriate Use and Maintenance Guidelines (Exhibit 1)

Tonight, staff is seeking Arts Council support on the potential improvements, draft guidelines for use and maintenance of the Pergola.

BACKGROUND

At its October 2025 meeting, the Arts Council reviewed the history, purpose, and current use of the Standing Strong Veterans Pergola and discussed potential updates, including:

- Addition of plaques representing all branches of the Armed Forces
- Replacement or reconsideration of the pergola cover
- Clarification of appropriate uses of the structure
- Need for a formal maintenance plan

The Arts Council directed staff to return with additional information, including cost estimates for plaque(s), guidelines for pergola use, and a maintenance plan to include cost estimate to repaint the pergola. The Arts Council decided unanimously not to seek further price estimates on the pergola cover.

ISSUE/DISCUSSION

At the time the pergola was designed and installed, maintenance and operational guidelines were not established. Since installation, use of the Pergola has been managed by Parks and Recreation staff, guided by the original community vision and design intent as a memorial and gathering space.

Recent community feedback identified two key issues:

- The absence of representation for the U.S. Space Force among the military branch plaques
- The need for repainting to restore the structure's original vibrancy

Cost Estimates – Plaques and Repainting

The U.S. Space Force was officially established as the sixth branch of the U.S. Armed Forces on December 20, 2019. Staff evaluated the addition of plaques representing both the U.S. Space Force and the National Guard. Based on further review and community input (including from members of the VFW), staff recommend adding only the U.S. Space Force plaque, as the National Guard is represented within other branches of the military.

Updated cost estimates for fabrication and installation of additional bronze plaques are as follows:

- Fabrication: approximately \$1,000
- Installation: approximately \$2,000 - \$3,000

Pergola Repainting:

The pergola was last repainted in 2011. Based on current conditions and lifecycle expectations, repainting is recommended to preserve structural integrity and visual quality of the artwork.

- Estimated repainting cost: \$15,000.00

Draft Pergola Appropriate Use and Maintenance Guidelines (Exhibit 1)

Staff have developed draft guidelines to clarify and document appropriate use of the Pergola, ensuring activities remain consistent with its artistic intent as a memorial and community gathering space. These guidelines are intended to preserve the dignity of the site while allowing for meaningful community use.

In addition, the Pergola currently does not have a formal maintenance plan. Staff recommend the Arts Council endorse the Pergola Appropriate Use and Maintenance Guidelines to provide clarity to the use and operation of this park asset and to support the long-term preservation, safety, and visual integrity of the structure. This plan includes routine cleaning and inspections, timely repairs, and scheduled lifecycle maintenance such as repainting.

Tonight, staff will provide a brief presentation and be seeking the Arts Council's input and endorsement of the Appropriate Use and Maintenance Guidelines, and a recommendation to include repainting costs, procurement and installation of U.S. Space Force plaque in the 2027-2028 biennial budget.

NEXT STEPS

Based on Arts Council direction, staff will:

- Develop a budget request to submit as part of the biennial budget development process
- Collaborate with park maintenance and permitting staff on use and maintenance guidelines

RECOMMENDED ACTION

- Recommend staff include repainting costs, procurement and installation of U.S. Space Force plaque in the 2027-2028 biennial operating budget
- Endorse the draft Pergola Appropriate Use and Maintenance Guidelines



Appropriate Use and Maintenance Guidelines Standing Strong Veterans Pergola Mercerdale Park

Appropriate Use Guidelines

- **Permitted Uses/Installations:**

- Civic and community events (e.g., small public gatherings, City-sponsored events, Veterans and memorial-related ceremonies)
- Cultural and artistic performances
- Passive use such as reflection, small group gatherings, picnicking, and informal seating
- City-installed seasonal decorations, displays, and enhancements (e.g., lighting, flower baskets, sunshade)
- Arts Council supported temporary art installations
- Organized group activities or classes
- Filming or photography (non-commercial or permitted commercial use)

- **Prohibited Uses:**

- Activities that detract from the dignity of the memorial, including loud, disruptive behavior
- Installations that obscure plaques, inscriptions, or key design elements
- Unauthorized signage, postings, or advertisements
- Commercial sales or vending, unless explicitly permitted by the City
- Uses that may damage or deface the structure, including the attachment of items (decor, signage, equipment)
- Climbing, hanging, or misuse of structural elements
- Any activity that poses a safety risk

Maintenance Guidelines:**Routine Maintenance coordinated by Parks Maintenance:**

- Weekly site inspection
- Weekly light cleaning to remove dirt, debris, and organic build up
- Immediate removal of graffiti and unauthorized signage
- Monthly checks for wear, corrosion, loose components or damage
- Monthly evaluation of surrounding site conditions (landscaping, tree canopy, drainage)
- Annual deep cleaning- including pressure washing
- Annual review of plaques and inscriptions
- Schedule repainting every 10–15 years (or as needed based on condition).