



CITY OF MERCER ISLAND

LUTHER BURBANK DOCKS DESIGN CHARRETTE

Thursday, August 6, 2020 at 5:00 PM

A Note About Registering to Speak: Individuals wishing to speak live during the public input portions of the design charrette are asked to notify Paul West at 206.275.7833 or email paul.west@mercergov.org and leave a message before 4 pm on the day of the workshop. Please reference "Luther Burbank Dock" in your correspondence. The moderator will call on you by name or telephone number when it is your turn to speak.

Join by Telephone at 5:00 pm: To listen to the meeting or speak live during public input via telephone, please call 253.215.8782 and enter **Webinar ID 980 9512 6334** and **Password 020977** when prompted. The moderator will call on you by name or the telephone number you provide when registering to speak. Please note, the phone number you provide must match the number you call in on. For meeting security, unrecognized numbers will not be granted access.

Join by Internet at 5:00 pm: To watch the meeting over the internet or speak live during public input, via your computer microphone, follow these steps:

- 1) Click [this link](#)
- 2) If the Zoom app is not installed on your computer, you will be prompted to download it.
- 3) If prompted for Webinar ID, enter 980 9512 6334) Enter Password 020977
- 4) The moderator will call on you by name or refer to your email address when it is your turn to speak. Please confirm that your audio works prior to participating.

Submitting Written Comments: Written comments may be submitted at the [Mercer Island Lets Talk Luther Burbank Dock](#) page. Written comments received by 4:00 pm on August 6, 2020, will be read or summarized at the design charrette and become part of the project record on the Let's Talk site.

For the safety and wellbeing of the public and staff, the City strongly recommends that people attend the meeting by viewing the live feed using Zoom and join by Internet or phone using the link provided above.

INTRODUCTIONS AND ROLES

1. Introductions

OVERVIEW OF THE SCOPE OF THE PROJECT

GOALS FOR THE DESIGN CHARRETTE

PHYSICAL, FINANCIAL, AND ENVIRONMENTAL LIMITATIONS OF THE PROJECT

FOCUS AREAS OVERVIEW

- [2.](#) Focus Area: Floating Docks
- [3.](#) Focus Area: Breakwater
- [4.](#) Focus Area: Shoreline Access and ADA
- [5.](#) Focus Area: Plaza Elements

GOALS AND EVALUATION OF ALTERNATIVES

NEXT STEPS

ADJOURNMENT

Luther Burbank Dock Reconfiguration and Repair Design Charrette

August 6, 2020

Mercer Island & via Zoom teleconferencing



Introductions and Roles

- **City Staff** – navigate the agenda, provide context, record comments
- **Consultants** – frame choices, provide information
- **Stakeholders** – provide a range of perspectives
- **Individual participants** – observe, add perspectives not previously expressed



Participant Introductions

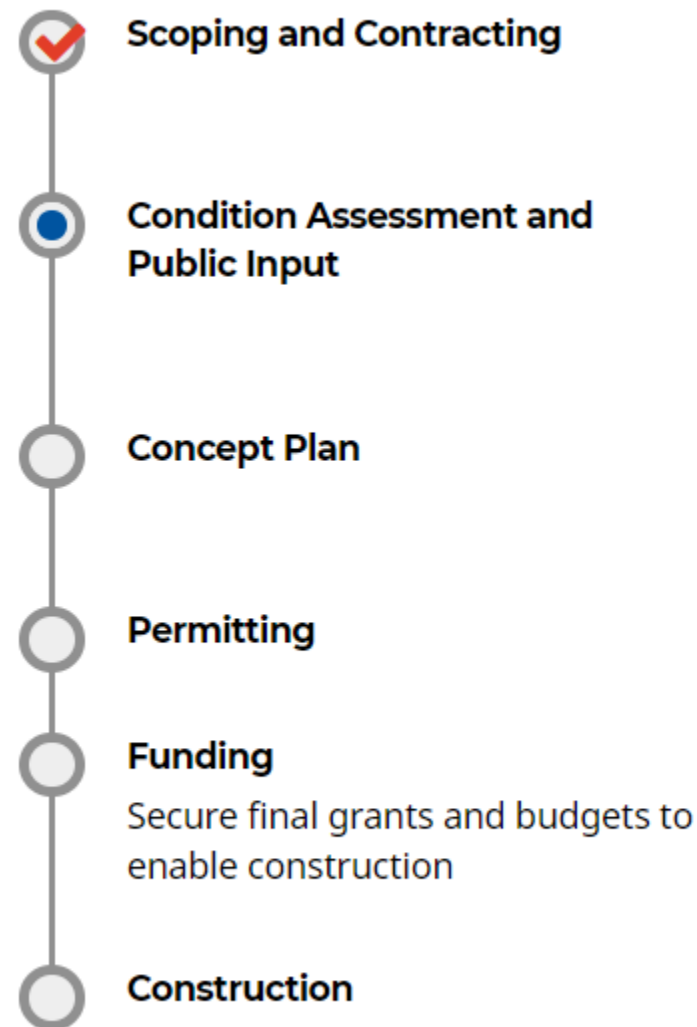
- City staff
- Consultants
- Dept. of Natural Resources staff (landowner)
- City Council
- Parks and Recreation Commission
- Arts Council
- YFS Foundation
- Other organizations
- Individuals



Where are we in the process?

- ✓ Scoping and Contracting
- ✓ Condition Assessment
- **Design Charrette**
 - Design Alternatives
 - Online Open House – end of August
 - Preferred Alternative
 - Parks and Rec Commission
 - City Council approve concept

Timeline



Objectives for the Design Charrette

GOAL: Develop a concept plan for the waterfront that centers on small boat recreation.

- Understand the technical issues involved
- Share ideas and different perspectives
- Consider the range of opinions expressed
- Give the design team (City and consultants) constructive feedback



Focus Areas

1. Floating Docks
2. Breakwater
3. Accessibility
4. Placemaking

Procedure

- a. Presentation of issues
- b. Clarifying questions –all
- c. Initial impressions from stakeholders
- d. Public input
- e. Reactions and Prioritization exercise

Ground rules for the meeting

- Raise hand (Zoom) when you want to speak
- Mute when you are not speaking, unmute when you are called on
- Turn video off if you are not actively participating
- Do not restate opinions that have already been expressed and recorded



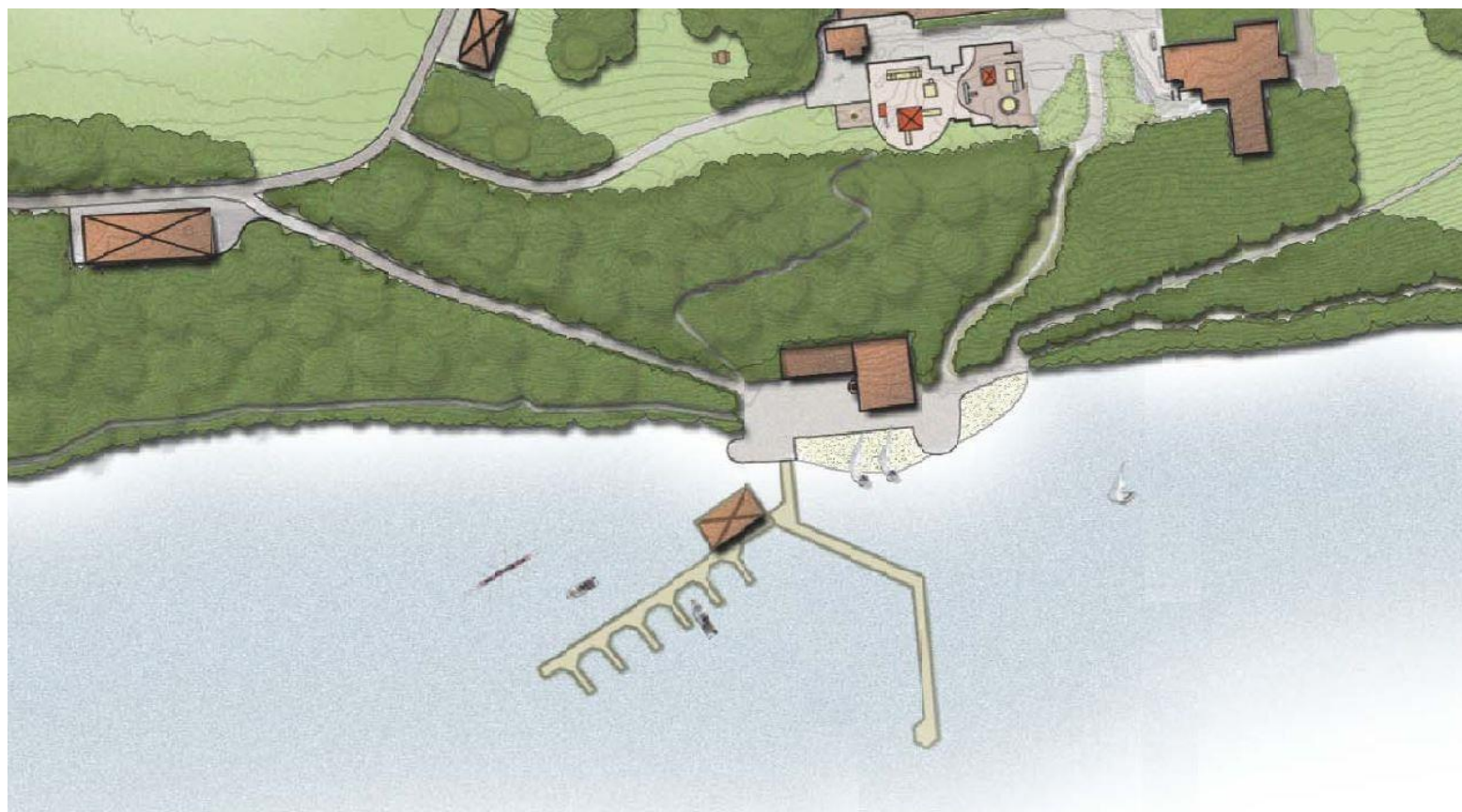
Tips for a good meeting

- Focus on topics that are of interest.
- Pace yourself. It's OK to step away if needed.
- Step back and look at the big picture periodically.
- Use Chat to put questions into the queue, not for commenting.
- Be patient with the new technology and format.
- Follow up on Let's Talk with additional comments.



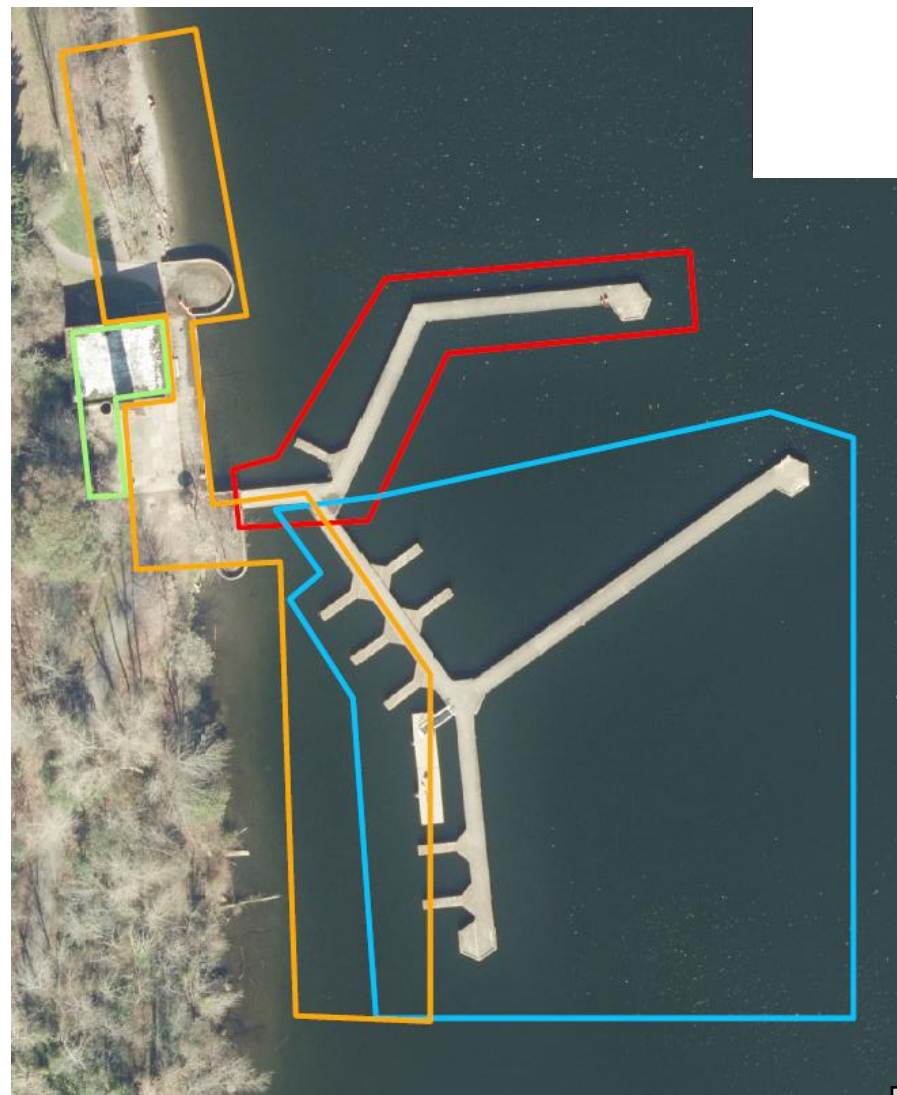
Overview of the Project

Luther Burbank Master Plan (2006) provides the conceptual vision for the waterfront. The focus is on paddlecraft, small boats and shoreline access.



Overview of the Project

- Dock Reconfiguration – replace south piers with floating docks for better boating access
- Dock Repair – Retain and renovate north pier
- Access and Placemaking – improve shoreline access, provide ADA access, provide for non-boating uses of the waterfront.



Project Limitations

- Physical – topography, existing structures
- Environmental – highly regulated environment and on leased aquatic shorelands
- Financial – Grant programs limits, Parks Operations Levy expires in 2023



Project Grant Sources

	Project Component	Grant Limit	Match Requirement
Boating Facilities Program (state)	Floating docks for small powerboats	\$1,000,000	25%
Boating Infrastructure Grant (federal)	Fixed piers for large powerboats	\$1,440,645	25%
Aquatic Lands Enhancement Account (state)	Shoreline access and small paddlecraft	\$1,000,000	50% (currently 25%)
Land and Water Conservation Fund (federal)	Shoreline access	\$960,430	50%

Focus Areas

- Floating Docks
- Breakwater
- Accessibility
- Placemaking

Procedure

- a. Presentation of issues
- b. Clarifying questions
- c. Initial impressions
- d. Public input
- e. Reactions and
Prioritization exercise

On BREAK

Luther Burbank Dock Reconfiguration and Repair Design Charrette



Item 2.

-

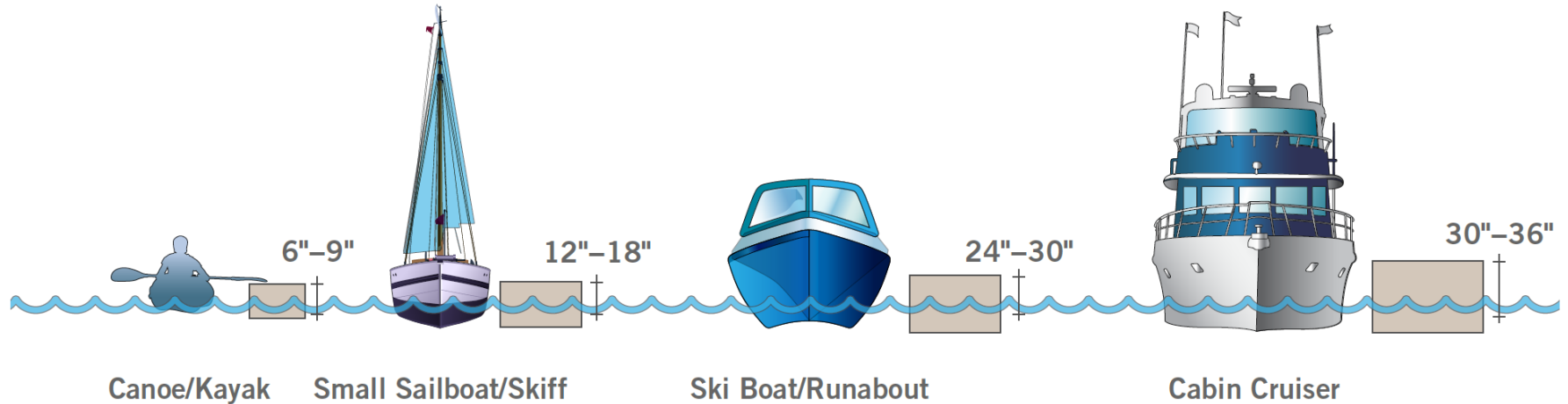
Docks: Fixed Pier vs Floating Dock

Item 2.



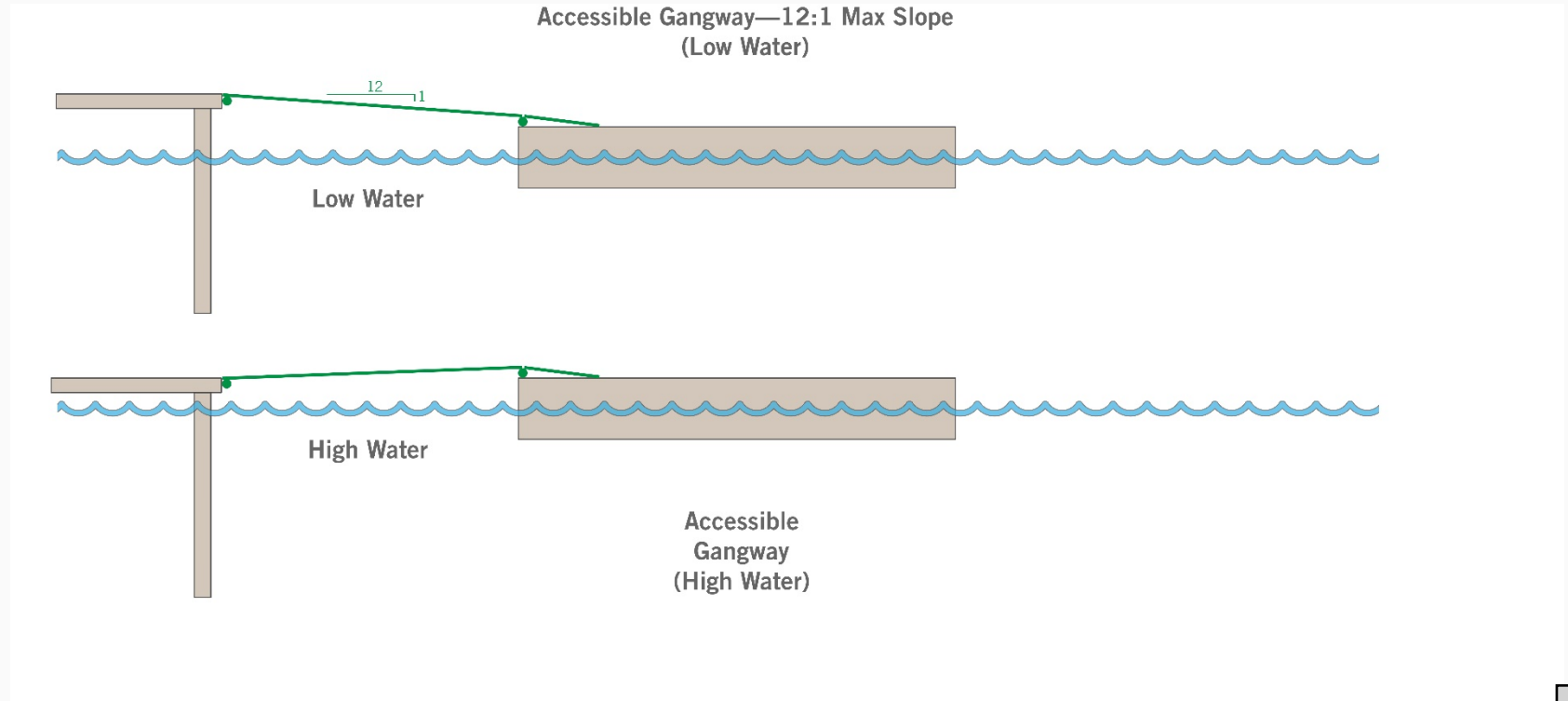
Docks: Boat Size and Dock Freeboard

Item 2.



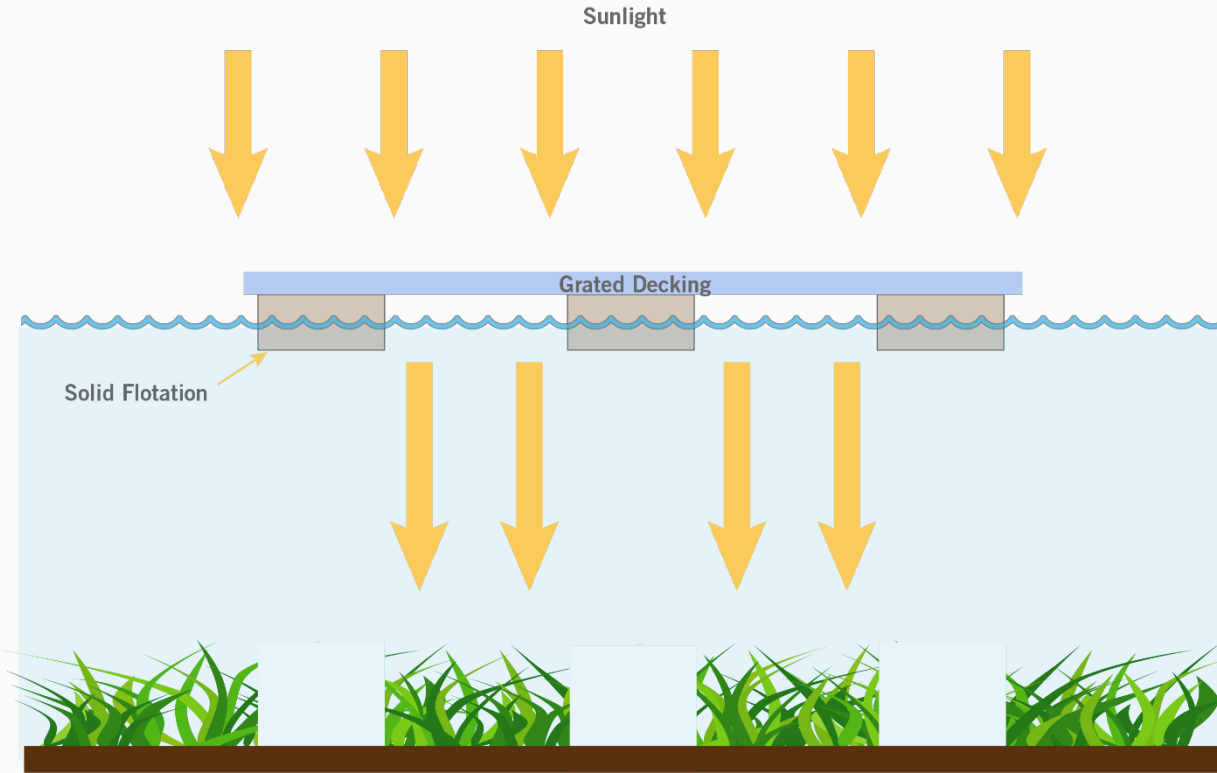
Docks: Gangway Slope

Item 2.



Docks: Open Grating

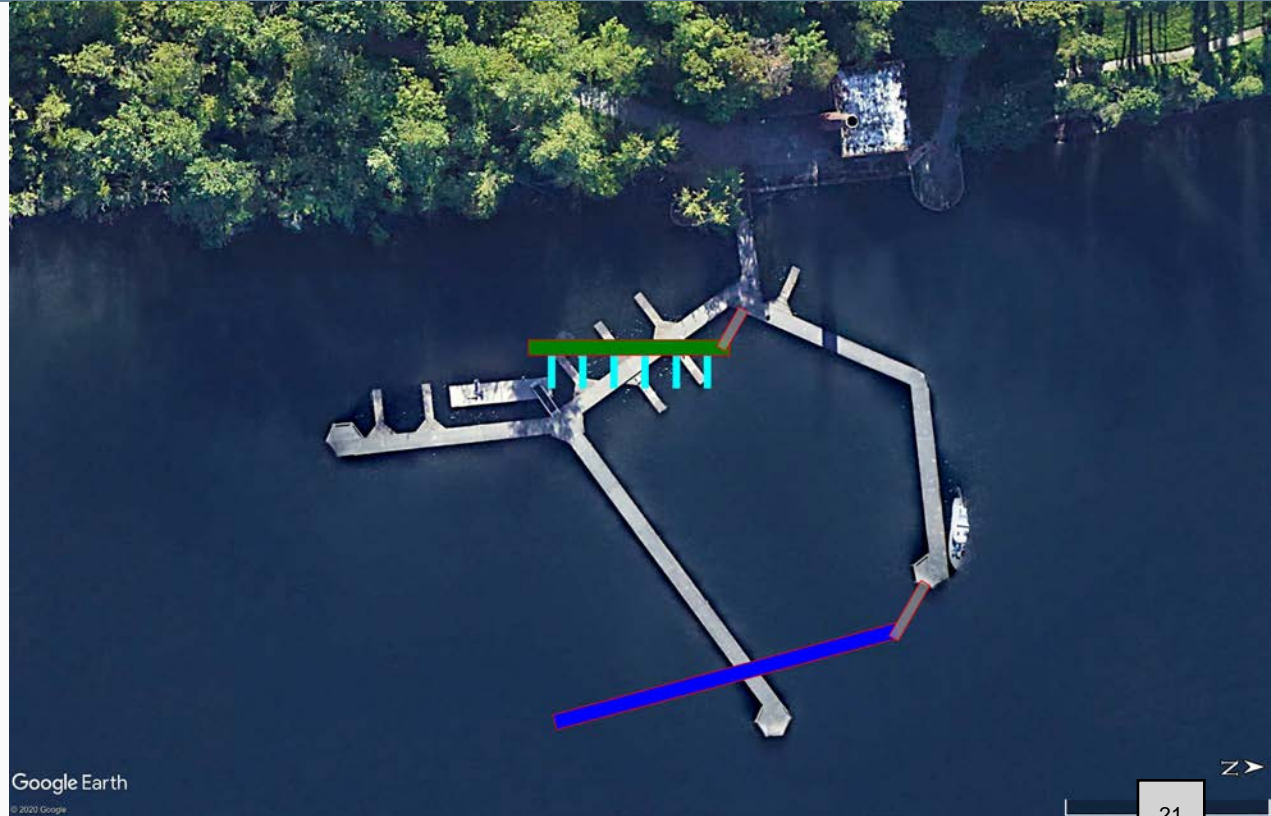
Item 2.



Docks Alternative 1: End of North Pier

Item 2.

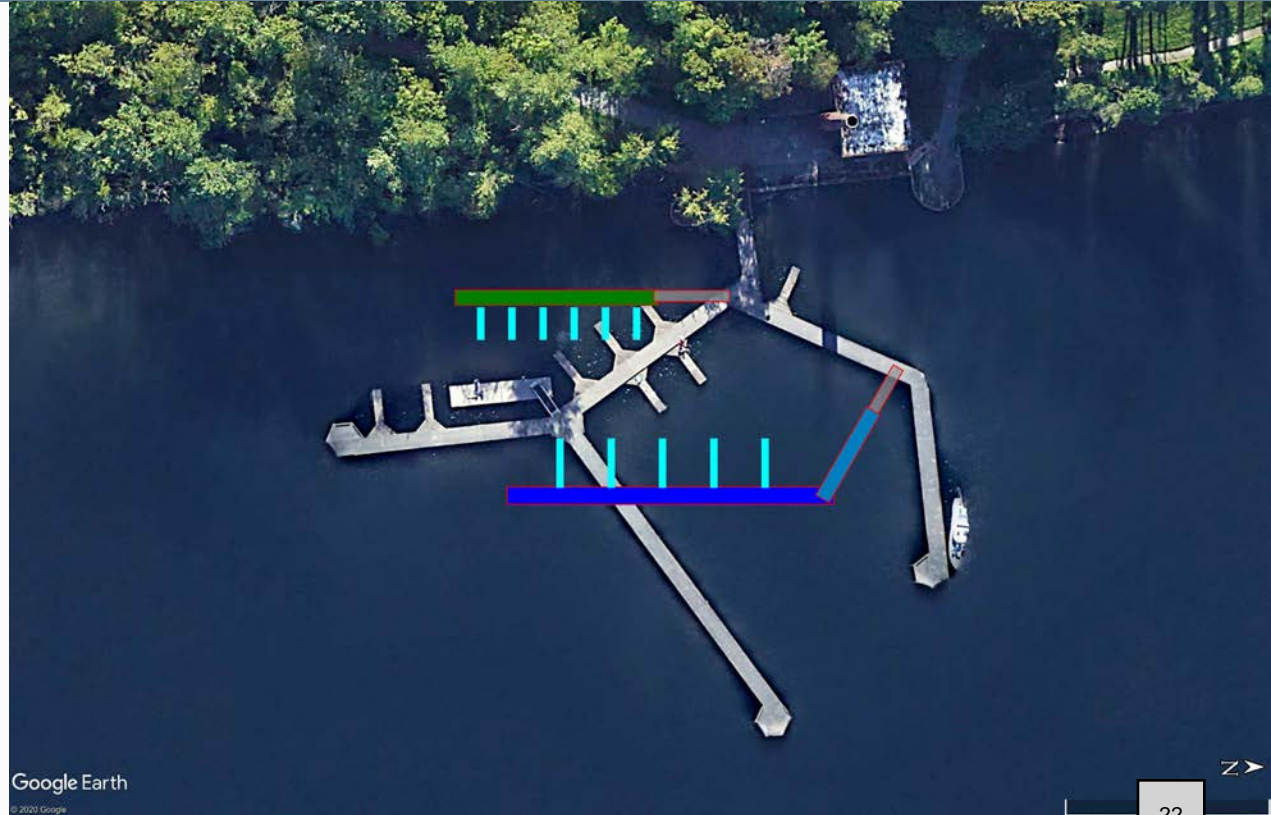
- Breakwater and small motorboat dock furthest from small sailboat and hand-powered craft dock
- Longer breakwater without small motorboat docks
- North pier provides access to small motorboat dock and passive uses



Docks Alternative 2: Approach to North Pier

Item 2.

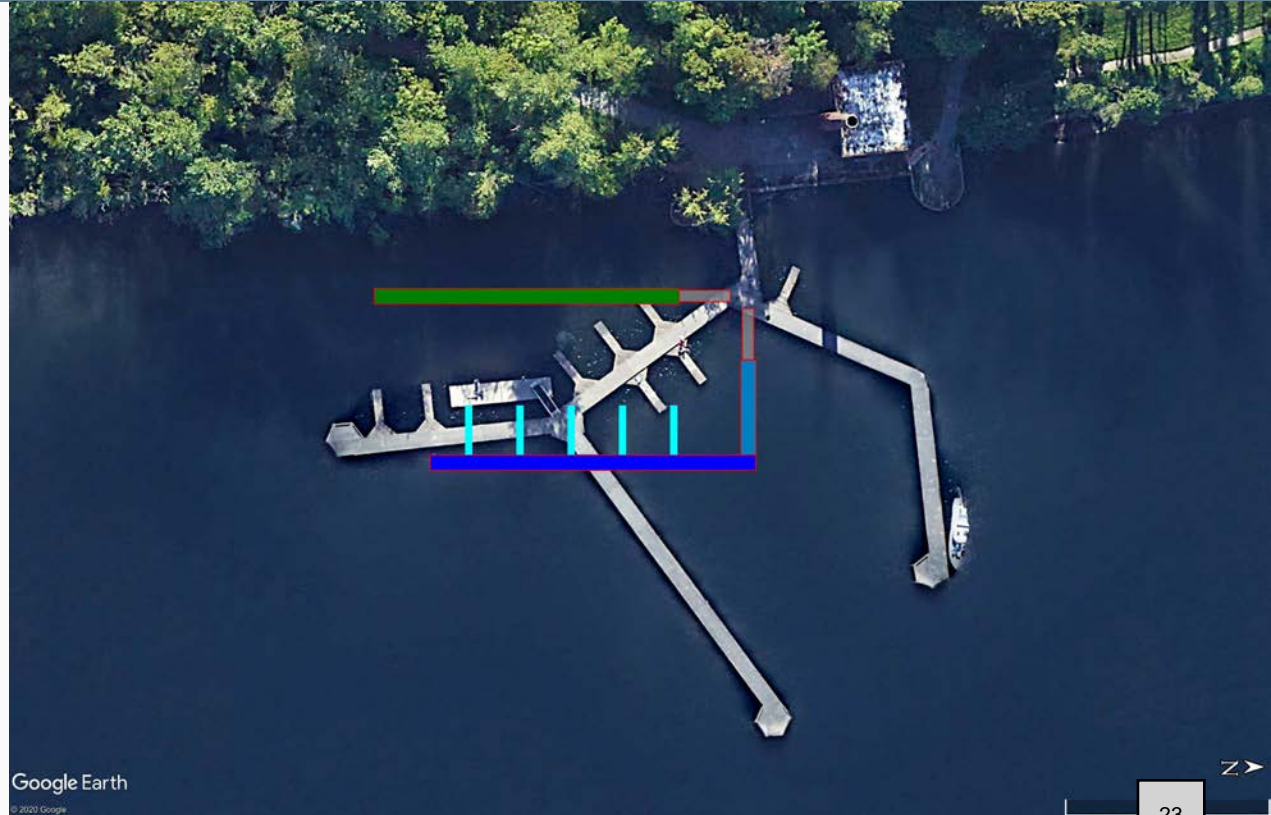
- Small motor boat dock furthest from small sailboat and hand-powered craft dock
- Outer portion of north pier reserved for passive uses; inner portion shared use



Docks Alternative 3: First Hexagon

Item 2.

- Shortest access route to small motorboat docks.
- North pier reserved for passive use
- No slips for sailboats or hand-powered craft



Alternatives Evaluation Criteria

Item 2.

- Safety
- Cost
- Environmental impact
- Alignment with grant criteria
- Revenue generation
- Access from shore
- Access from water
- ???

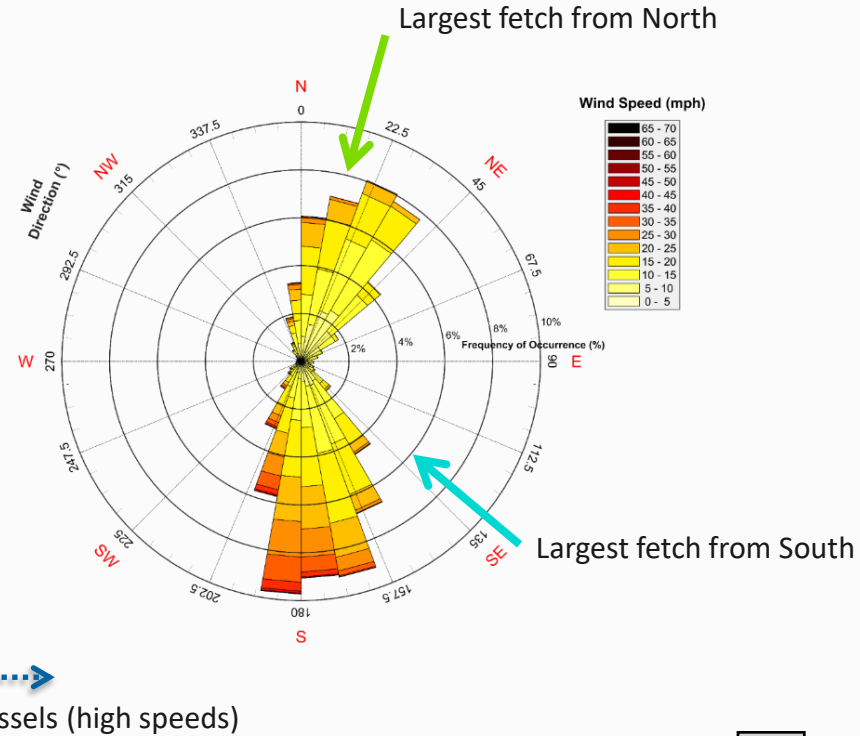
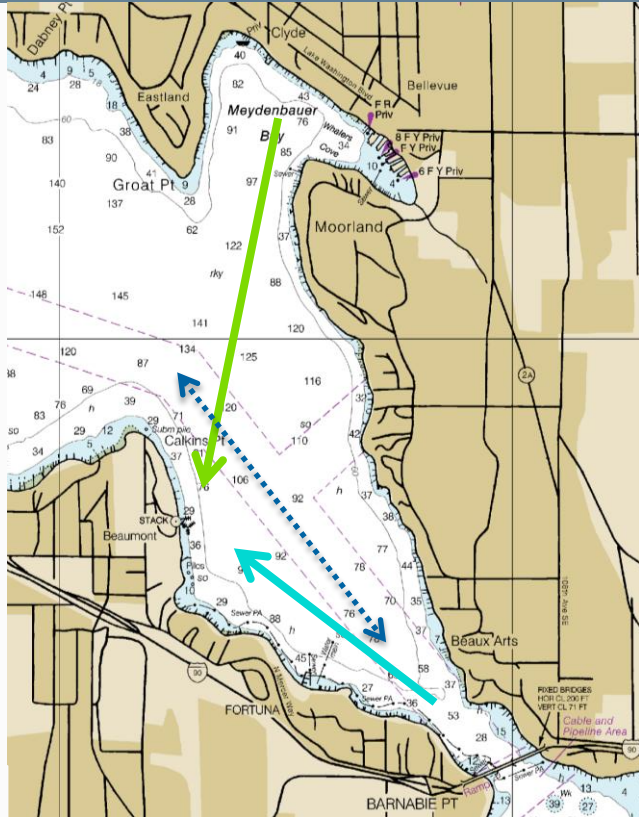


July 24, 2020

Luther Burbank Park Waterfront Plaza & Docks Coastal Processes 101

Coastal Processes: Wind-Waves and Wakes

Item 3.



Coastal Processes: Floating Breakwaters (1/1)

Item 3.

Floating Breakwaters let some wave energy through; work best for smaller, choppy waves



Larger waves



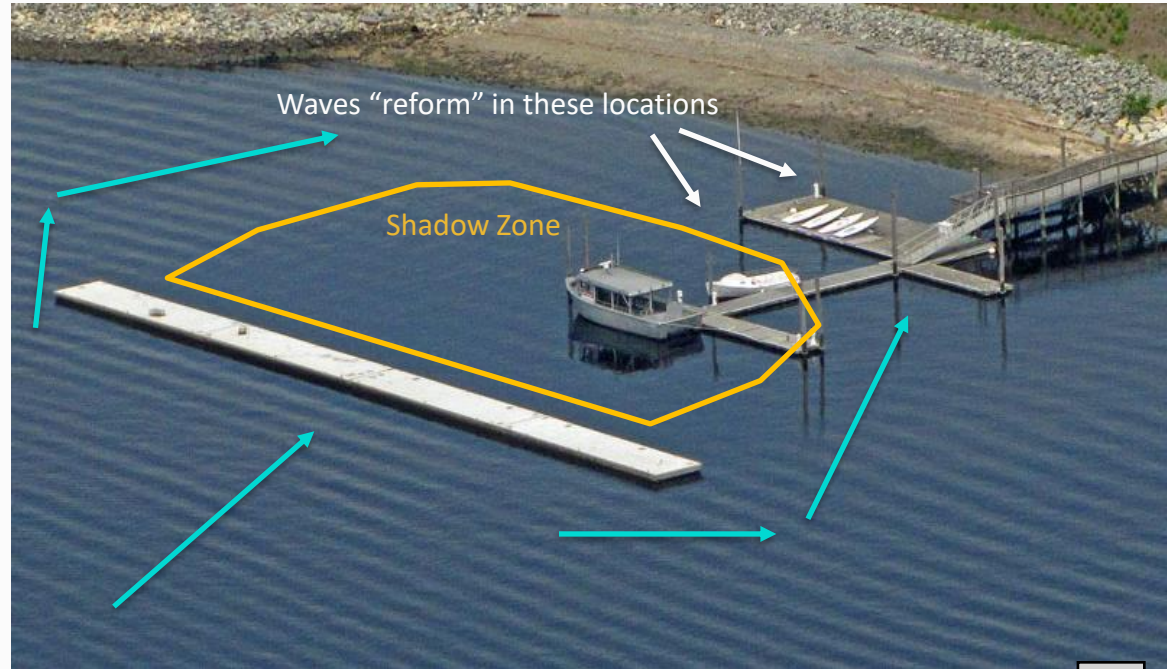
Smaller, choppy waves

Coastal Processes: Floating Breakwaters (2/2)

Item 3.

Breakwaters, including floating breakwaters, work best when they are close to facility

- “Shadow zone” of calmer water occurs on the leeward side on the landward side of the breakwater
- Waves will diffract around the ends of the breakwater and “re-form” some distance landward of the structure
- When you move the breakwater you move the “shadow zone”



Opportunities & Constraints: Coastal Processes

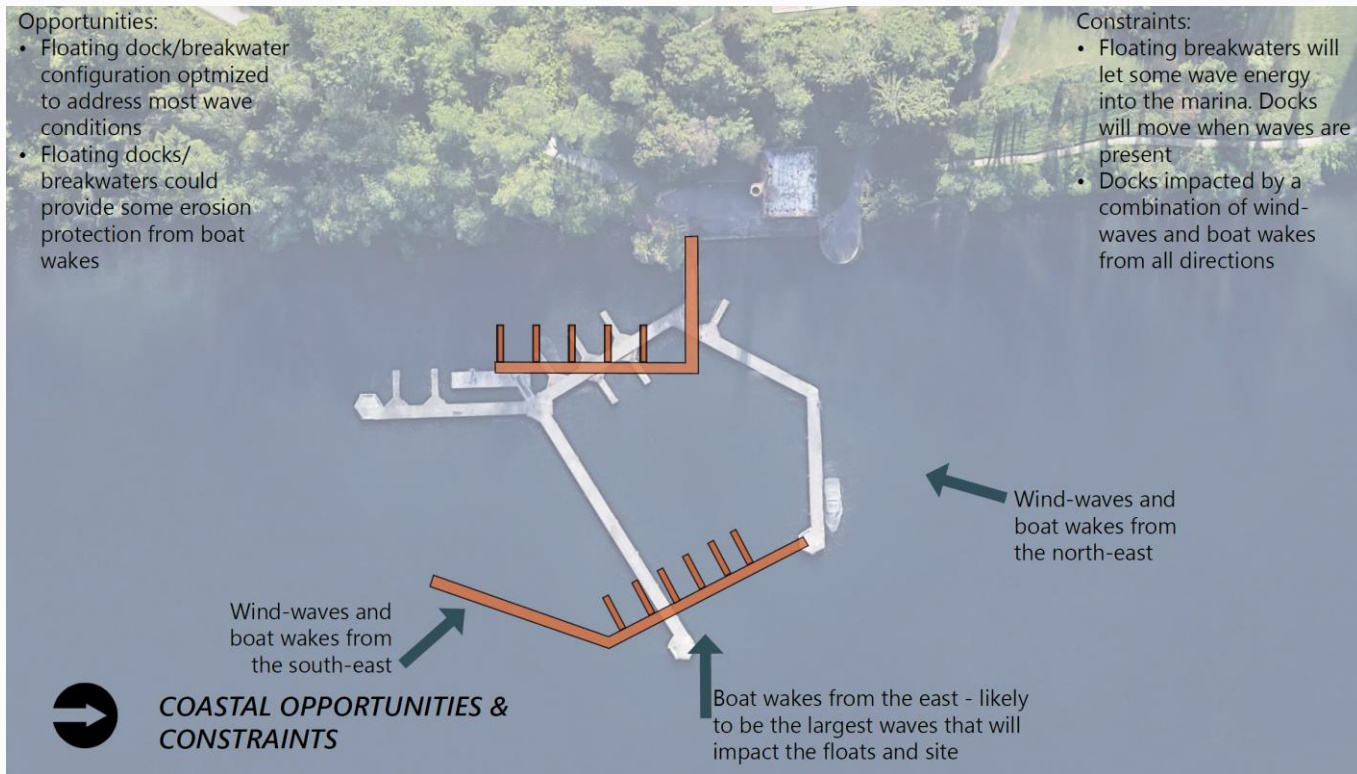
Item 3.

Opportunities:

- Floating dock/breakwater configuration optimized to address most wave conditions
- Floating docks/breakwaters could provide some erosion protection from boat wakes

Constraints:

- Floating breakwaters will let some wave energy into the marina. Docks will move when waves are present
- Docks impacted by a combination of wind-waves and boat wakes from all directions



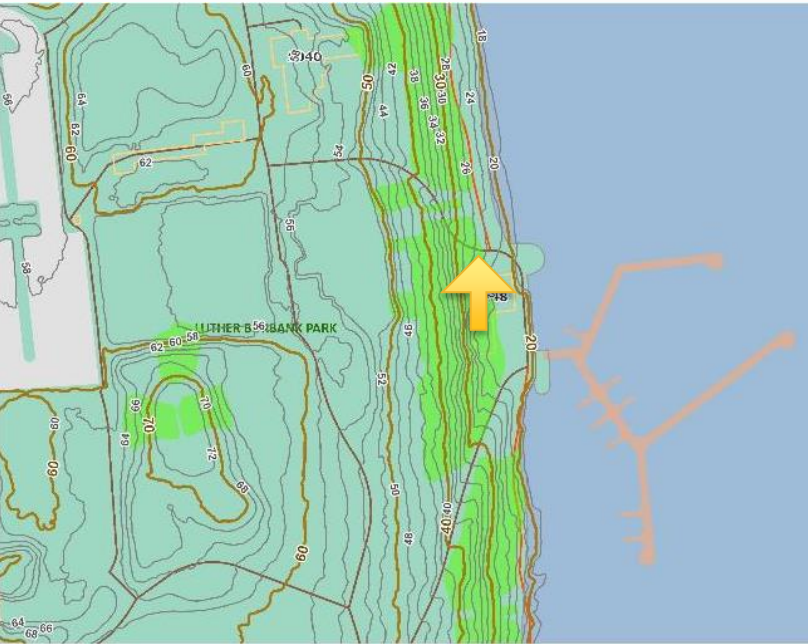
Project Site Access

Item 4.



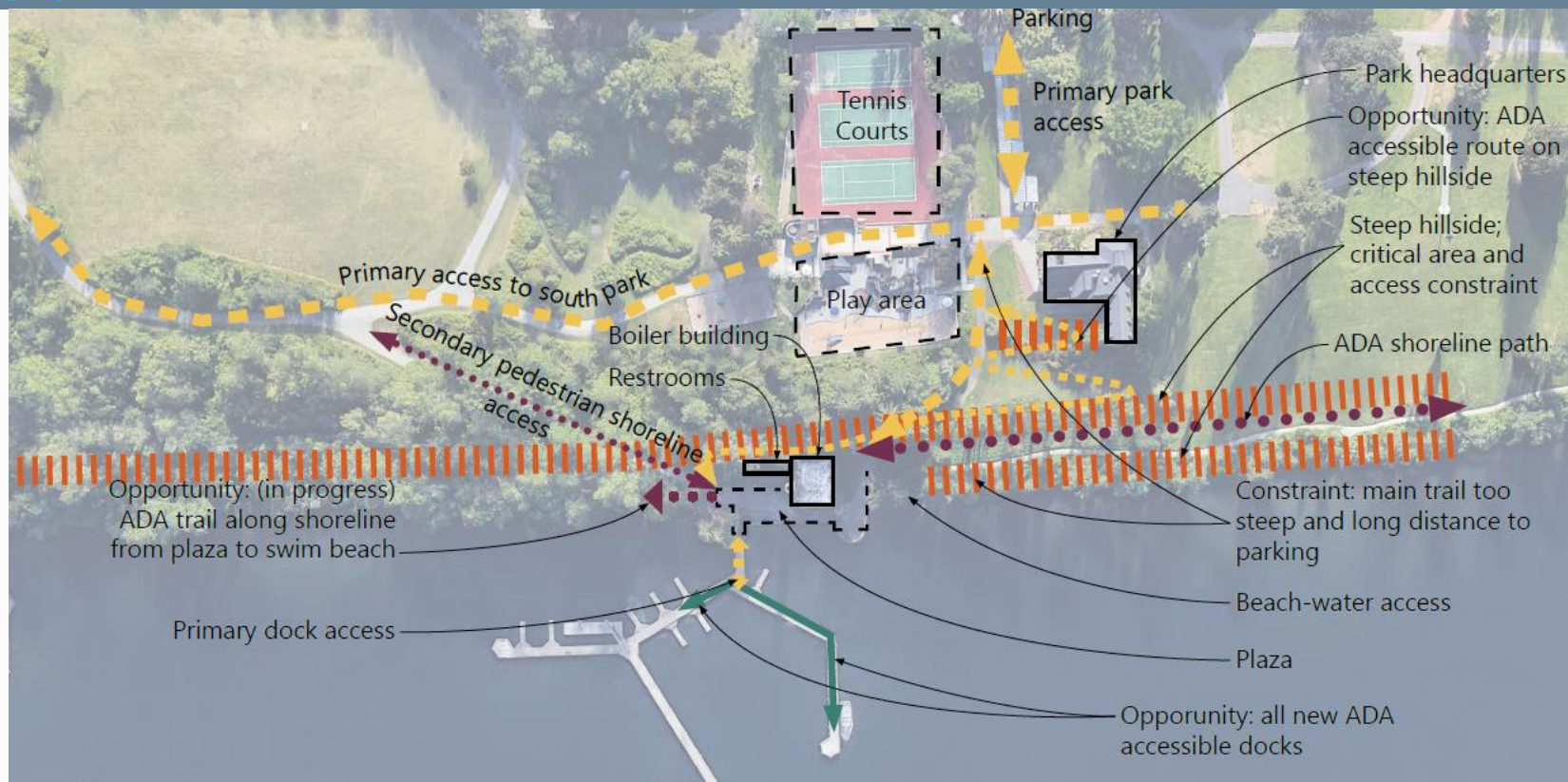
Steep Slope Conditions Effecting Access

Item 4.



Opportunities and Constraints: Access

Item 4.



Opportunities Steep Slope Access

Item 4.



Calkins Landing Park

Item 4.

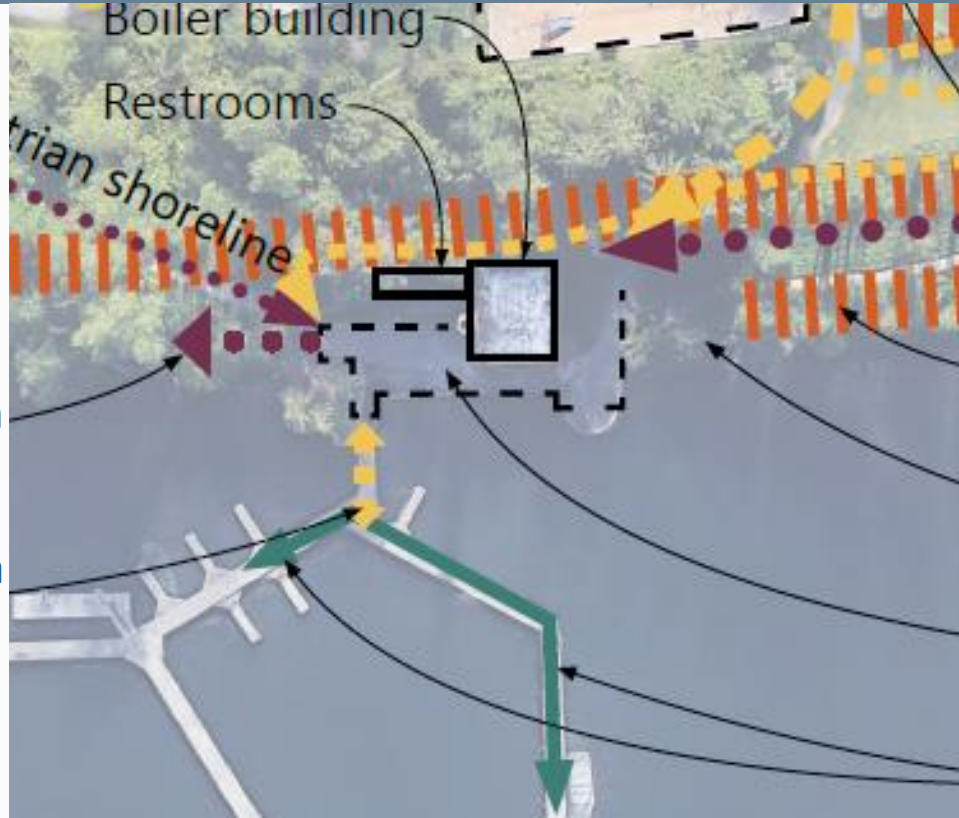


Potential Improved Connections This Project

Item 4.

South Shoreline
Path ADA Connection
(Underway)

Dock to Plaza
Connection



North Shoreline
Path Connections

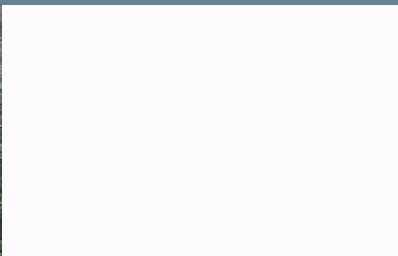
Beach
Connection

Plaza Access to Shoreline

New & Existing Dock
Connections

North Shoreline and Plaza to Beach Connection

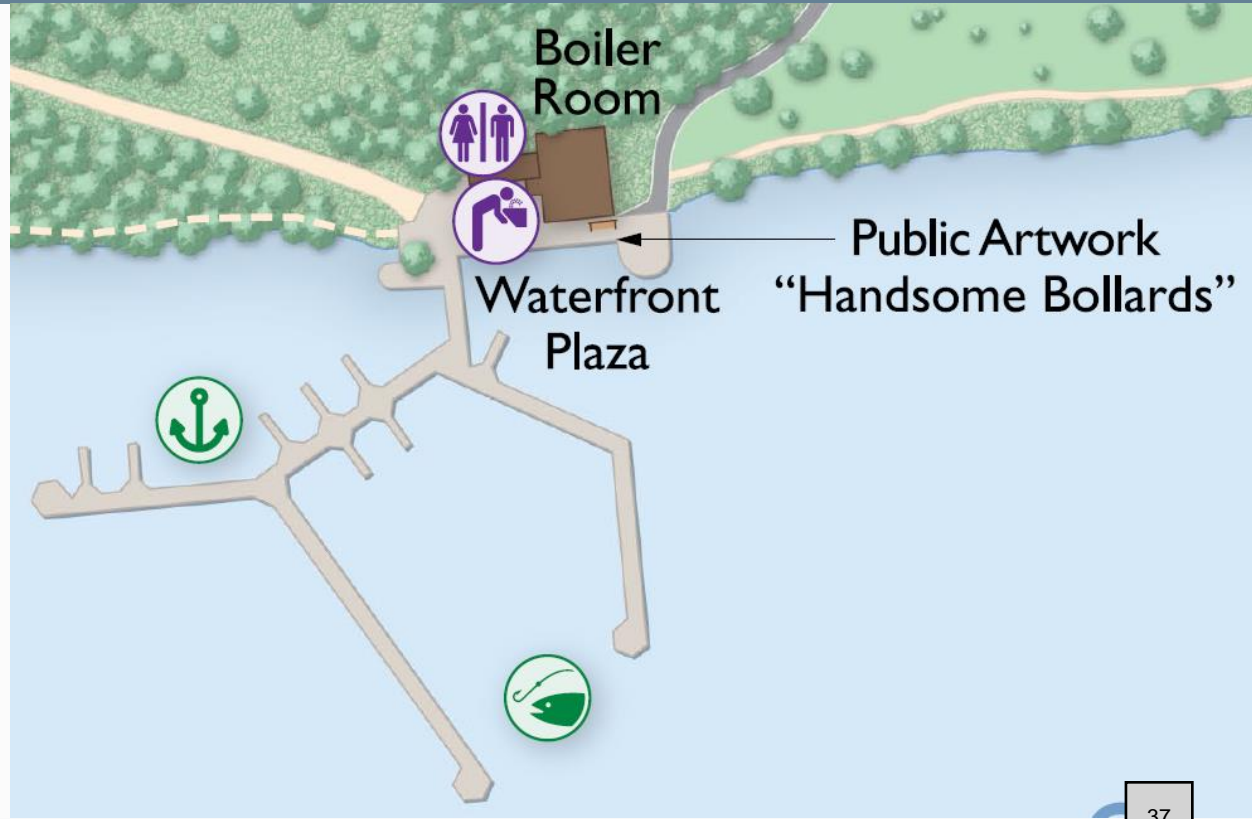
Item 4.



Plaza and Placemaking Goals

Item 5.

- Activate the docks, waterfront plaza, and adjacent areas to support the LBP Master Plan
- Plaza: Use a variety of design elements to create a distinct, contextual gathering space
 - Paving
 - Public art
 - Architecture
 - Lighting
 - Landscape
 - Site furnishings



What is Placemaking?

Item 5.

Placemaking capitalizes on a local community's assets, inspiration, and potential, with the intention of creating public spaces that promote people's health, happiness, and well-being

Source: Wikipedia

*Placemaking inspires people to collectively reimagine and reinvent public spaces ... and social identities that **define** a place and support its ongoing evolution.*

Source: Project for Public Spaces



Seattle Arboretum



Olympic Sculpture Park

The Project Site

Item 5.



Source: Google

Existing Conditions: Plaza and Boiler Building

Item 5.



Item 5.



Opportunities: Plaza Activation & Placemaking

Item 5.



North Shore, Magnuson Park



Meydenbauer Bay Park

Placemaking: What Is Most Important To You?

Item 5.

- Paving
- Public Art
- Architecture
- Lighting
- Landscape Planting
- Site Furnishings
- Views
- Entry Design



Source: Google