



**AGENDA
CITY OF LAUREL
PARK BOARD
THURSDAY, JUNE 03, 2021
5:30 PM
COUNCIL CHAMBERS**

Public Input: *Citizens may address the committee regarding any item of business that is not on the agenda. The duration for an individual speaking under Public Input is limited to three minutes. While all comments are welcome, the committee will not take action on any item not on the agenda.*

General Items

1. Approval of Park Board Minutes of May 6, 2021

New Business

2. Discussion on Sale of Parks Property on W. 12th Street
3. Discussion of lights at American Legion Ball Field

Old Business

4. Campground Update
5. Riverside Park Update
6. Pickle Ball Update
7. Skate Park Update
8. Kids Kingdom Update

Other Items

Announcements

9. Next Park Board meeting July 1, 2021.

The City makes reasonable accommodations for any known disability that may interfere with a person's ability to participate in this meeting. Persons needing accommodation must notify the City Clerk's Office to make needed arrangements. To make your request known, please call 406-628-7431, Ext. 2, or write to City Clerk, PO Box 10, Laurel, MT 59044, or present your request at City Hall, 115 West First Street, Laurel, Montana.

DATES TO REMEMBER

File Attachments for Item:

1. Approval of Park Board Minutes of May 6, 2021

May 6, 2021

Laurel Park Board Meeting

Started 5:36 PM with Irv Wilke, Jon Rutt, Evan Bruce, Phyllis Bromgard, Matt Wheeler.

No Public Comment

Phyllis moved Evan 2nd to approve the minutes of the April 1st meeting.

New Business:

Pickle Ball organization represented by Lisa Thompson is beginning to fundraise approximately \$30,000 for 2 courts in a Laurel Park. Several locations were discussed. Smaller than a tennis court, approximately 44 feet by 20 feet. Park board approved sending the information to the City Council for support. Possibly present to workshop on May 18th.

Old Business:

Riverside Park tree was removed. Online campground reservation is with city attorney. Repairs to Jaycee Hall to repair wiring and safety lighting were quoted with Canyon Electric having the best price. Evan made a motion to recommend proceeding with repairs to get Jaycee hall opened, Phyllis 2nd and it passed.

Kids Kingdom updated us on the funds raised, \$80,000 towards a \$150,000 budget. The Laurel Park Board agreed that the City Council should consider adding the funds needed to get the project done this summer. MOU was finalized to allow the City to consider this. The playground would be installed by a professional company in the business of Playground erection. This was approved to be forwarded to the council.

Skateboard Park Group in Laurel has organized is actively raising funds The group is scheduling activities to raise awareness of the benefits of skateboarding to the community and gather support for this project. They have signed an agreement with the Laurel Montana Community Foundation to provide fiscal sponsorship and raise funds with tax deductible donations.

Meeting adjourned at 7:25

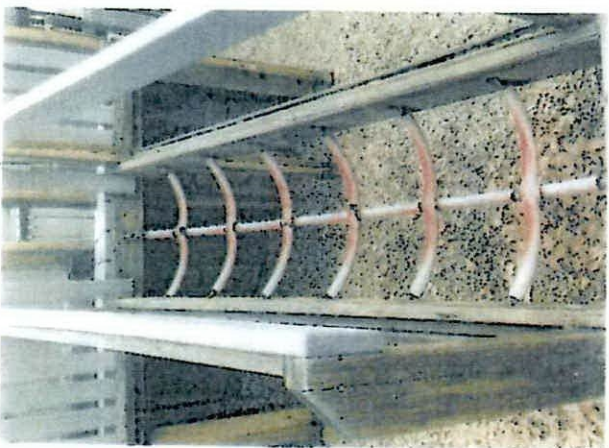
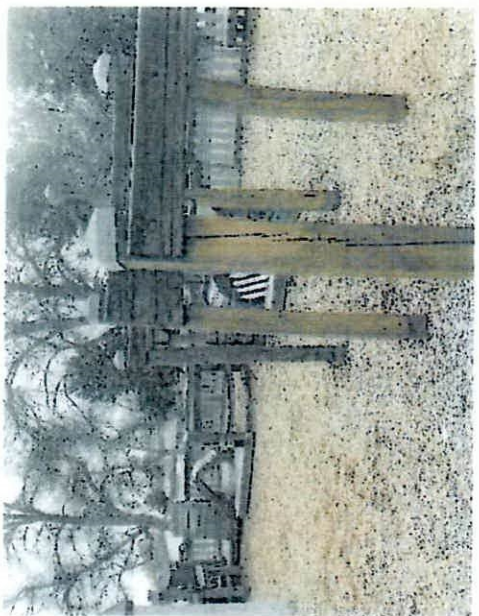
Jon Rutt



Kids' Kingdom Playground Restore or Rebuild

COST/ANALYSIS/RECOMMENDATION

Grace Bible Church/Playground Restoration Team



LEATHERS & ASSOCIATES, INC.
725 North A1A, Unit C201
Jupiter, FL 33477
(877) 564-6464
<http://www.leathersassociates.com>



INVOICE

BILL TO
City of Laurel
P.O. Box 10
Laurel, MT 59044

INVOICE # 11351
DATE 10/14/2020
DUE DATE 10/29/2020

DESCRIPTION	AMOUNT
Playground Assessment by William Huglil on 10/16-17/20	1,800.00
<hr/>	
BALANCE DUE	\$1,800.00

Make checks payable to Leathers & Associates. We also accept credit cards. Card payments over \$2,000 will be assessed a 2.5% fee. A finance charge of 1.5% per month is added to any outstanding balances after due date.



Playground built by
LEATHERS
Dream. Build. Play!

**Playground renovation Proposal
Kiwanis Park Playground**

City of Laurel, MT
115 West 1st Street
Laurel, MT 59044

DATE: 12/27/20
Project Manager: TBD
Construction Week: 12-16 May 2021

READ THIS ENTIRE PROPOSAL CAREFULLY. IT CONTAINS IMPORTANT INFORMATION FOR YOUR PROJECT.

This proposal constitutes an estimate of the work our office will provide for your project and the associated fees. The fees described in this proposal assume that we are providing standard services based on our community build model as summarized in the "Playground Planning Guide" and this document. The fees outlined here will vary only if additional work is requested or required. Examples of work that would generate additional fees include details above and beyond those necessary for us to build the project, a major change in project's scope, or a change of site.

The construction phase will not change except by mutual agreement between Leathers & Associates and the community. Certain conditions may be encountered during construction that significantly affects consultants' total number of hours. Variables such as weather and low volunteer turnout are impossible to identify until the time of construction and may affect the total hour's necessary for construction consultation. However, additional fees will be charged only if construction continues beyond the final scheduled day.

The following pages contain an outline of the remaining services we are to provide. If you have any questions about this proposal, please contact us by 1/27/21. Otherwise, we will assume the proposal is acceptable and will proceed with your project.

The following is an outline of fees for Leathers & Associates' professional services:

<u>Design Phase</u>	\$ 2,500
<u>Construction Phase Fee</u> <i>(The Construction Phase fee confirms your construction date and is due upon acceptance of your proposal.)</i>	\$ 950
<u>Design Development & Construction Documents Phase</u>	
Design Development, Detailed drawings, Rendering	\$ 12,600
Project management services, Materials list	\$ 4,400
<u>Organization Phase</u>	
Organization Phase Fee	\$ 1,900
Estimated travel expenses	\$ 1,200
<u>Construction Consultation</u>	
Construction Consultants (estimated 5 days)	\$ 17,900
Estimated travel expenses. *Hotel accommodations are <u>not</u> included and are typically donated.	\$ 3,000
<u>Estimated materials</u> (TBD upon completion of Schematic design)	\$ 100,000
<u>Sub-total</u>	\$ 145,550
Materials contingency	\$ 2,500
Project contingency	\$ 4,000
<u>TOTAL ESTIMATED BUDGET</u>	\$ 152,050

725 North A1A, Unit C201, Jupiter, FL 33477
Toll Free 877-564-6464 Florida 561-746-9581
www.leathersassociates.com

CONSTRUCTION OPTIONS

Most of our projects are constructed through community volunteers. This process is L&A's heart and soul. The community build method not only saves money but empowers communities with limitless potential and benefits. At the same time, we understand that the community build model may not be an option or the best choice. In those situations, we also can work with contractors, city workers, volunteers, and a variety of combinations. In many cases L&A can also provide a turn-key option for the project. Our goal is to find the right solution for your community and situations.

ASSOCIATED COSTS

An estimate for the proposed scope of work above including L&A fees (design, project management and construction consultation) and all materials is estimated at around \$140,000. It's anticipated that the work can be completed in five days.

As a reminder this is just an estimate until we define the final scope of work and get actual quotes for the materials.

Due the structures age and condition, we have provided an estimated cost to replace the playground with a new design utilizing all of today's latest materials (no wood). Today's playgrounds are expected to last minimally 30 years with minimal maintenance needs.

A custom designed community build replacement estimate is around \$260,000 for a playground with similar square footage as your existing playground. This cost estimate is based on utilizing our community built model.. It's anticipated that the work can be completed in five days. While a renovation is an option, consideration should be given to the total amount budgeted vs. the expected longevity of each option. Also yearly maintenance cost and needs for upkeep must be kept in mind.

Removal or demo of the existing playground is not included in any of these estimates. If neither of the two options above are within an obtainable budget a smaller scope based on a reduced budget could be developed.

NEXT STEPS

Work with L&A to develop a final scope of work based on your budget and our recommendations. Review when you would want the work completed by and develop a timeline from there. Please contact us if you have any questions. We truly appreciate the opportunity to work with your community again.



6100 3rd Ave South, Great Falls, MT 59405

QUOTATION

406 / 454- 0420

FAX ----- 406 / 454- 0439

Quotation #	
P.O. #	

PREPARED FOR:

NAME: Tami

SCHOOL: Grace Bible Church

ADDRESS: 917 Washington Ave
Laurel, MT

Revised 1-19-2021

INQUIRY #	DUE DATE	COUNTY	DISTRICT	STATE	SALESMAN

QTY.	UNIT	DESCRIPTION	UNIT PRICE	EXTENDED
		Playcraft		
		R5 Custom Play System - R5053D8FA		
		PC 3490 Toddler Train, Engine		
		PC 2474 Stand-n-Spin (Enclosed)		
		PC 2479 Mini-Go-Round		
		PC 1347 Astro Rider		
		PC 2442 Spring Fling, Duo		
		PC 2120 Arch Swing (2B)		
		PC 2010 7ft Arch Tire Swing		
		PC 2190 T-Swing (2FB)		
		Access Ramp (1-Section, Female Pivot		
		Border Timber w/ Stake		
		Freight	\$	3,200.00
		Equipment Total	\$	74,738.00
		EWF 300 Cubic Yards	\$	5,850.00
		Freight	\$	1,125.00
		EWF Total	\$	6,975.00
		Install of EWF and Equipment	\$	29,500.00
		Total	\$	111,213.00
		Does not include extreme digging,ground prep or tear out		

TERMS: NET 30 DAYS

FREIGHT: FOB-----

PRICES FIRM FOR 30 DAYS ONLY

SPECIFICATIONS: ALL manufacturer's
standard construction and finishes.

THANK YOU ----

BY: Bob Remy

bob@mtschoolequipment.com

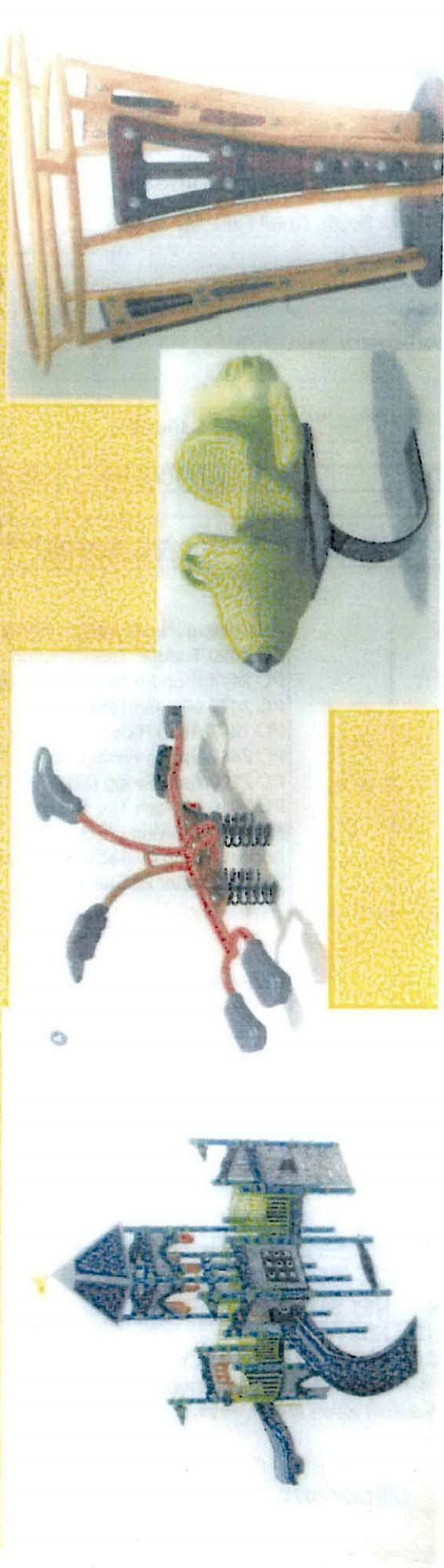
Title ----- contract sales dept.
Montana School Equipment Co.

MSEC 5/6/2021

--RS--



Some of the new components of Kids Kingdom Playground



**GRACE CHURCH
TOP VIEW**

ADA ACCESSIBILITY GUIDELINE - ADAAG CONFORMANCE

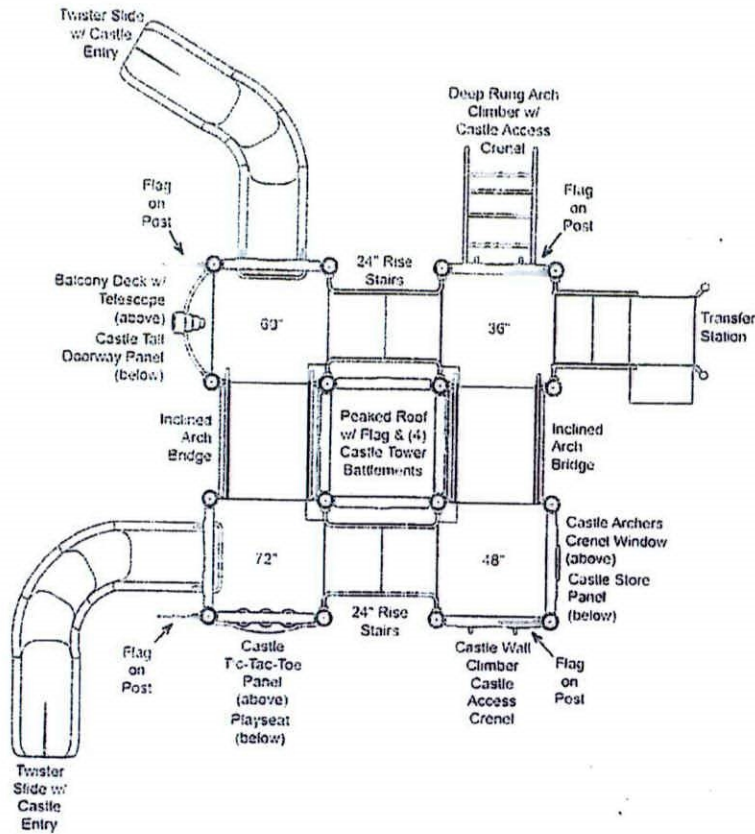
ELEVATED	ACCESSIBLE	RAMP ACCESSIBLE	GROUND	TYPES
6	6/3	0	1/2	2/2

R5 FOR KIDS
AGES
2-12

GENERAL NOTES:

This conceptual plan is based on information provided prior to construction. Detailed site information, including the following, should be obtained, evaluated, and utilized in the final project design. Exact site dimensions, topography, existing utilities, soil conditions and drainage solutions.

WARNING: Accessible safety surfacing material is required beneath and around this equipment that has a critical height value (Fall Height) appropriate for the highest accessible part of this equipment. Refer to the CPSC's Handbook For Public Playground Safety, Section 4: Surfacing.



STRUCTURE#: R5053D8FA
PROJECT#: MSE212D938B
DATE: 1/18/2021 | DRAWN BY: Alyssa

MIN. USE ZONE: 35' x 36'

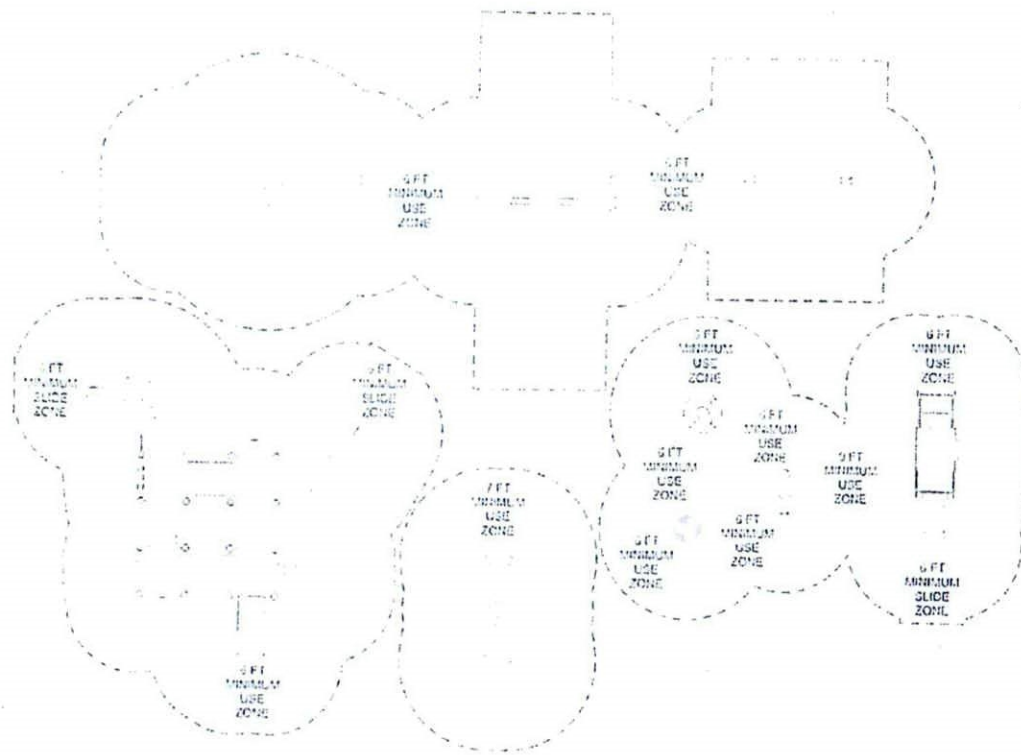
PLAYCRAFT REP:
Montana School Equipment Con

**GRACE CHURCH
SITE PLAN**

ADA ACCESSIBILITY GUIDELINE - ADAAG CONFORMANCE

ELEVATED	ACCESSIBLE	RAMP ACCESSIBLE	GROUND	TYPES
6	6/3	0	13/2	4/2

R5 FOR KIDS
AGES
[Mixed]



GENERAL NOTES:
This Preliminary Site Plan is based on measurements that were provided in the initial planning phase. All dimensions must be verified prior to the submission of a purchase order. Playcraft Systems will not be held responsible for any discrepancies between actual dimensions and dimensions submitted in the planning phase.

The Minimum Use Zone for a play structure is based on the product design at the time of proposal. Components and structure designs may be subject to change which may affect dimensions. Therefore, before preparing the site, we strongly recommend obtaining final drawings from the factory (available after the order is placed and included in the Assembly Manual).

WARNING: Accessible safety surfacing material is required beneath and around this equipment that has a critical height value (Fall Height) appropriate for the highest accessible part of this equipment. Refer to the CPSC's Handbook For Public Playground Safety, Section 4: Surfacing.

PROJECT#: MSE212D938B
DATE: 1/18/2021 | DRAWN BY: Alyssa

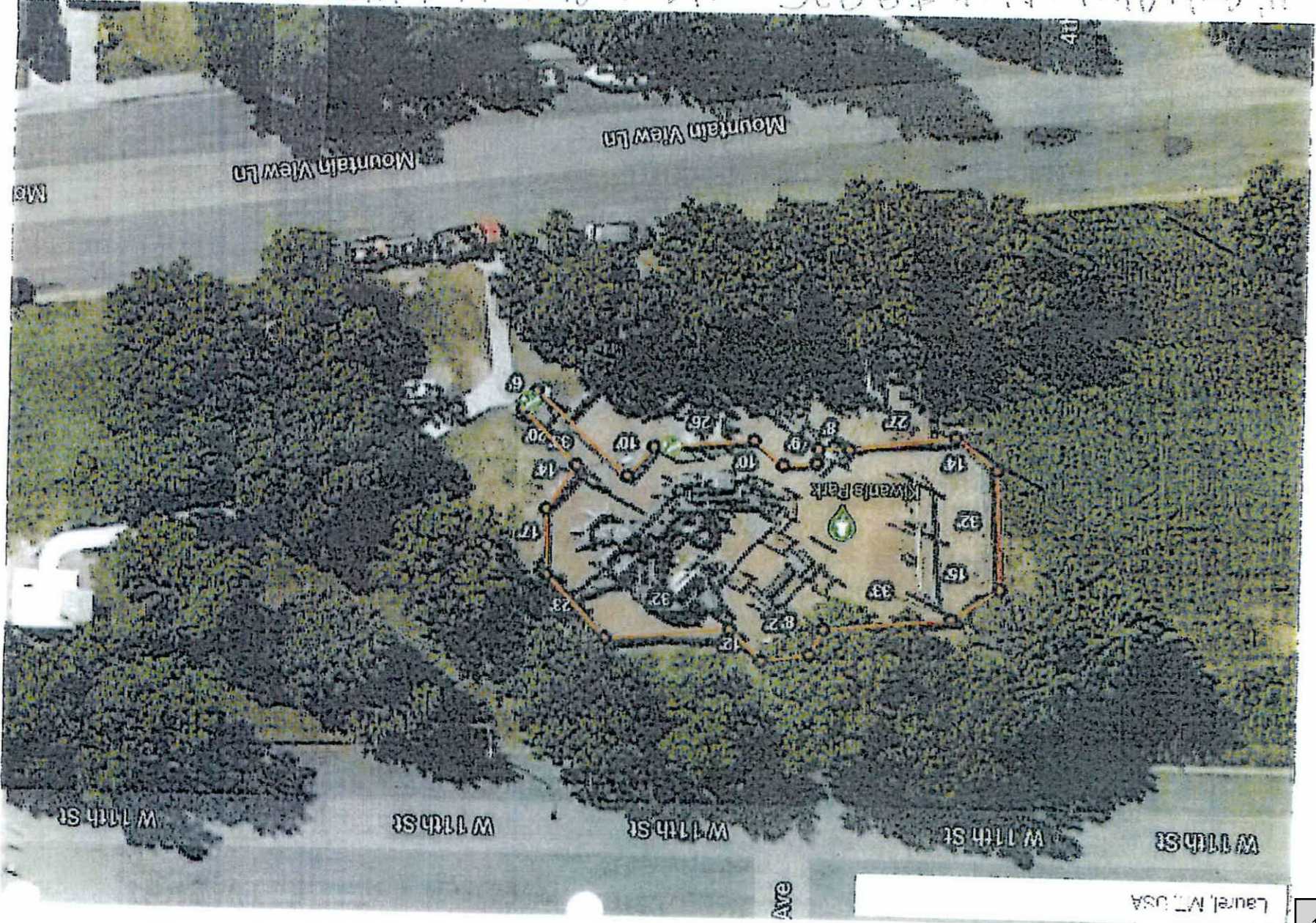
MIN. USE ZONE: 85' x 60'

PLAYCRAFT REP:
Montana School Equipment Co

LOT ON PLOTS \$15,330

6' Galv Chain Link \$11,385. 4' V2 steel \$20,875.
6' Black Chain Link \$13,675. New Frame work

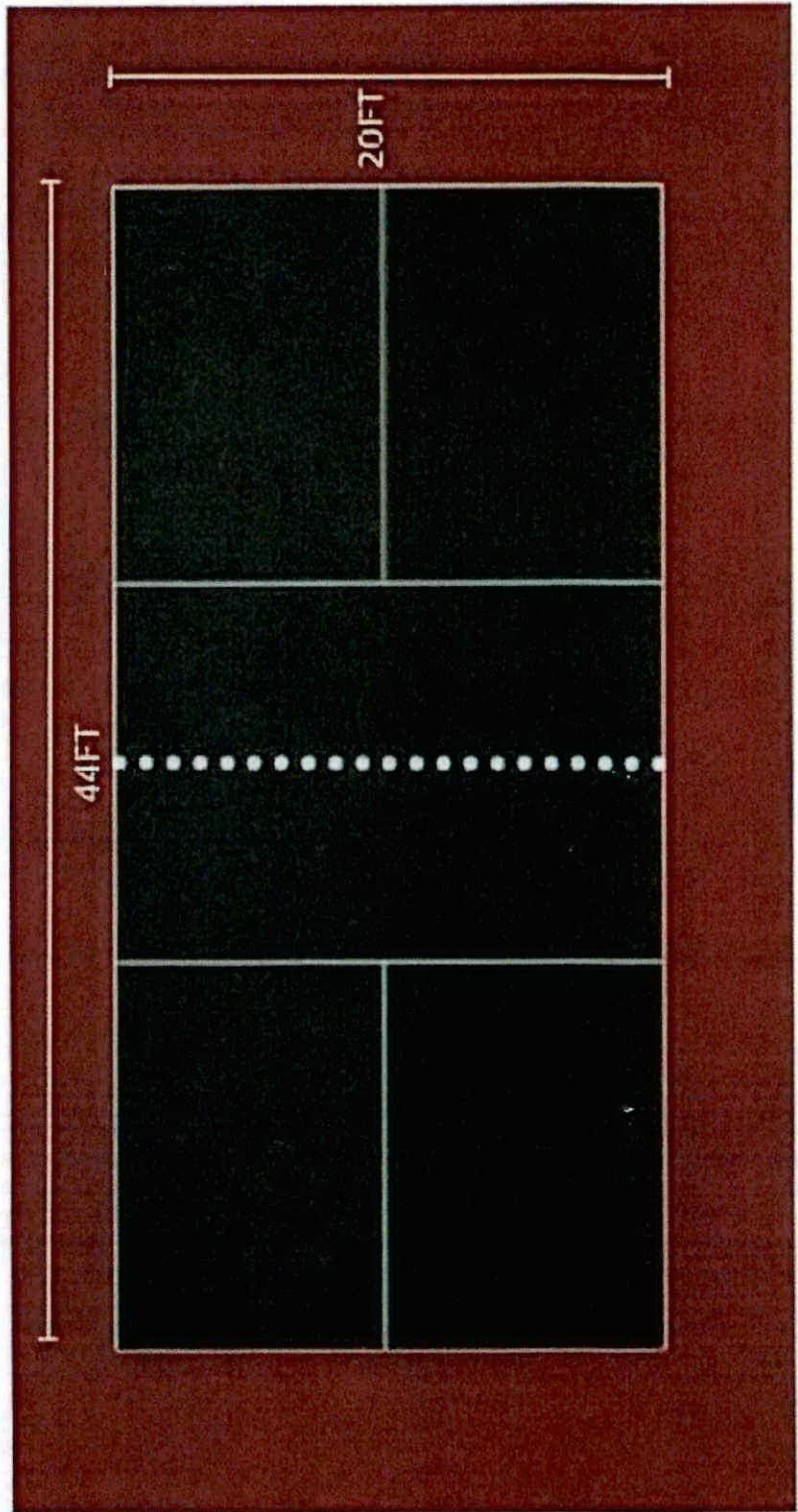
4' Galv Chain Link \$9,925.
4' Black Chain Link \$12,480.

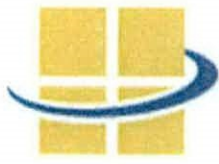










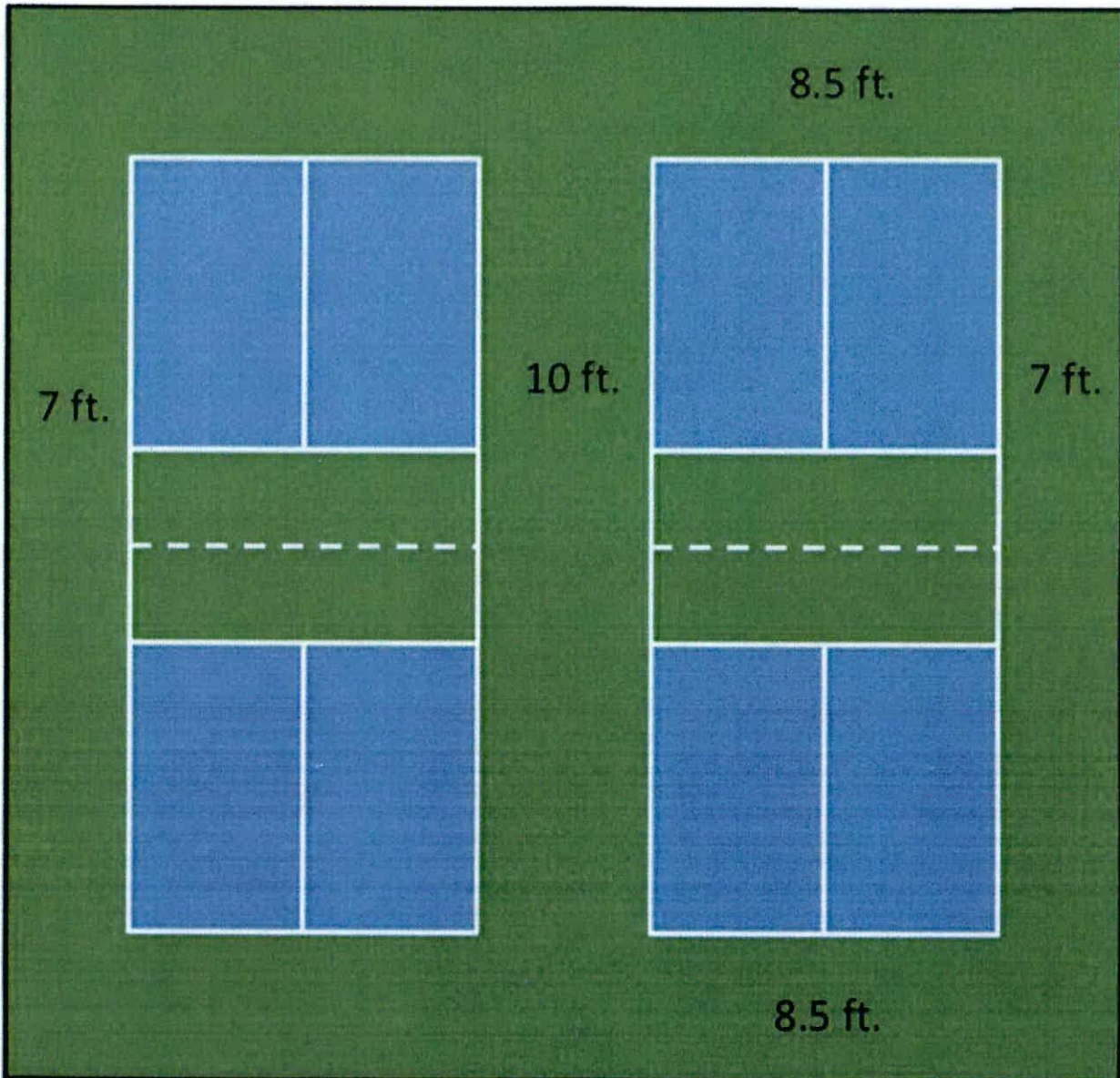


AccessFixtures

High-Performance Lighting Solutions

AccessFixtures.com 800.468.9925 Sales@AccessFixtures.com

Single Pickleball Court Area 44' Long x 20' Wide
Twin Pickleball Court Fenced in Area 61' Long x 64' Wide



Who is Eligible for State-side LWCF funds?

There are several state entities that are eligible for LWCF state-side funds, they include incorporated cities, towns, counties, school districts, state agencies, and tribal governments. We want to highlight that all tribal entities in Montana are eligible to apply for these funds. If you have questions about eligibility please reach out to Montana State Parks: <http://stateparks.mt.gov/recreation/lwcf.html>.

Utility of SCORP

This plan acts as a resource for outdoor recreation providers and organizations. The goals and recommendations should guide future planning efforts, assist with grant applications, and be a unifying vision of outdoor recreation for the state. Specifically, applications for LWCF state-side grants should use language from this document when applying for funding. We recommend highlighting how individual projects align with the SCORP goals and recommendations. These plans are produced by all 50 states and are recognized by local, state, and federal agencies as being the primary guiding documents for outdoor recreation. This means this SCORP document can be used as justification in grant applications, future planning efforts, and can assist organizations in justifying resources. The Society of Outdoor Recreation Professionals (SORP) (<https://www.recpro.org/>) is a resource for organizations who want to know how to utilize SCORP for planning, management, and research. Additionally, SORP has an electronic database of all 50 states' SCORP reports.

Planning Process

This plan is possible because of the hard work and dedication of our SCORP Advisory Committee (see pg. II). The Advisory Committee was comprised of outdoor recreation representatives from public and private sectors, local, state, and federal agencies, and advocacy organizations. With the guidance from the Advisory Committee we developed a planning process that met the intent of SCORP. The approach was to utilize facilitated group discussions to gather input from the outdoor recreation community and pair that with existing data sets to develop a robust set of goals and recommendations.

The primary data collection effort took place during three facilitated discussion groups held in March of 2019 in Kalispell, Butte, and Billings. Over 300 outdoor recreation related people were invited to attend our meetings to share ideas about trends, needs, and goals for the next five years (Appendix A). We then paired the major themes from the discussions with existing data on recreation trends in Montana (Appendix C). This provided a foundation for our SCORP Advisory Committee to develop goals and recommendations.

REFERENCES

Grau, Kara; Nickerson, Norma P.; Sage, Jeremy L.; and Schultz, Megan, "Resident Travel in Montana" (2018). *Institute for Tourism and Recreation Research Publications*. 369.

Moore, R.L., Driver B.L. (2005) Introduction to Outdoor Recreation: Providing and Managing Natural Resource Based Opportunities. Venture Publishing, Inc. State College, Pennsylvania.

United States Forest Service. Developing Forest-Wide Plan Components. 2016.

Vincent, C.H, Hanson, L., Argueta, C. (2017). Federal Land Ownership: Overview and Data. Congressional Research Service, 1–25.

2020–2024 SCORP Goals



GOAL 1: Promote Outdoor Recreation Opportunities for All Montanans



GOAL 2: Enhance Public Access to Outdoor Recreation Resources and Facilities



GOAL 3: Support Economic Vitality of Communities and State



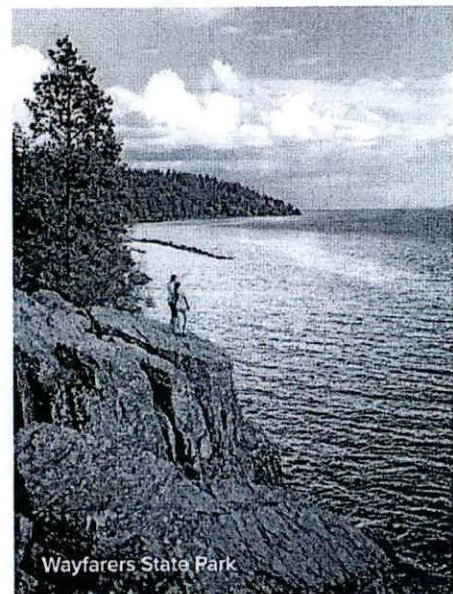
GOAL 4: Improve Quality of Life through Outdoor Recreation Experiences



GOAL 5: Adapt Outdoor Recreation for a Changing Environment



GOAL 6: Honor Montana's Outdoor Legacy



Andy Austin (andy.austinphoto.com)