



**CITY OF LANDER  
CITY COUNCIL WORK SESSION MEETING**

**Tuesday, July 23, 2024 at 6:00 PM  
City Council Chambers, 240 Lincoln Street**

**AGENDA**

---

Join Zoom Meeting

<https://us06web.zoom.us/j/83403658376?pwd=w23G3Qkol9PsJFRx0icnEZculhVyVl.1>

Meeting ID: 834 0365 8376

Passcode: 563609

**1. MAYOR AND COUNCIL UPDATES**

**2. STAFF REPORTS**

**3. NEW BUSINESS (NON-ACTION ITEMS)**

- [A.](#) Public Works Director / City Engineer Lance Hopkin's Council Presentation "What is Happening with Infrastructure in 2024 -2025".

**4. ADJOURNMENT**

**Upcoming Council Meetings:**

**Regular Meetings:**

6:00 PM Tuesday, August 13, 2024, City Council Chambers

6:00 PM Tuesday, September 10, 2024, City Council Chambers

**Work Sessions:**

6:00 PM Tuesday, August 27, 2024, City Council Chambers

6:00 PM Tuesday, September 24, 2024, City Council Chambers

**All meetings are subject to cancellation or change.**

# 2024-2025 City of Lander Infrastructure Projects

# Lander 4 MG Tank and Pumping Station Project



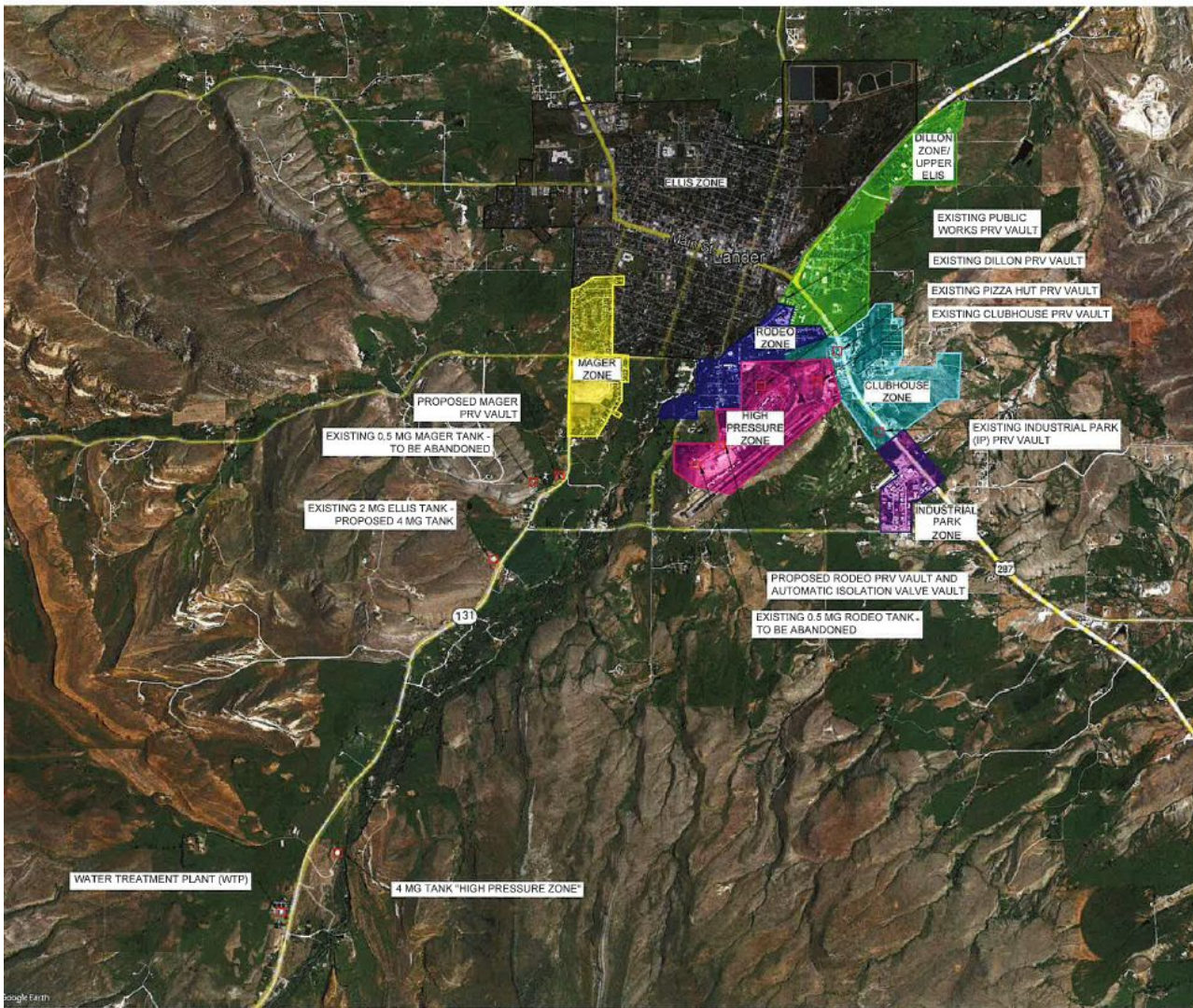
# Purpose

Replace three failing tanks and pumping station with a new larger tank and new pumping station.

Section 3, Item A.

SEQUENCING AND SERVICE REQUIREMENTS SUMMARY

1. COORDINATE ALL SHUTDOWNS AND WATER CHANGES WITH OWNER. PROVIDE OWNER 48 HOURS MINIMUM WRITTEN NOTICE OF INTENT TO SHUT DOWN, REROUTE SERVICE FOR PROJECT.
2. PRIOR TO SUBMITTALS, VERIFY EXISTING 36" RCP CASING AND PIPELINE ELEVATIONS AT BOTH ENDS OF CASING SO APPROPRIATELY SIZED CASING SPACERS MAY BE ORDERED. REFERENCE SHEET 01C008.
3. PRIOR TO ANY WORK AT ELLIS SITE, INSTALL 12" SACRIFICIAL INSERTION VALVE AND THRUST BLOCK AT STA. 11+00, REFERENCE SHEET 01C008.
4. ELLIS ZONE SHALL BE FED AT A MINIMUM THROUGH THE ELLIS BYPASS PRV (PRV-EX-520, SHEET 02D001) DURING MAY THROUGH JULY. DURING ALL OTHER PERIODS, ELLIS ZONE CAN BE FED THROUGH THE PUBLIC WORKS PRV AND DILLON PRV. REFERENCE SHEETS 00G008-00G010, 02D001.
5. CATTLE IN FIELD NORTH OF ELLIS TANK SITE FROM APPROXIMATELY NOVEMBER THROUGH MAY. MAINTAIN ACCESS. COORDINATE WITH LANDOWNER, AND PROJECT WORK. REFERENCE SHEET 01C001.
6. HOSPITAL PUMP STATION AND INSERTION VALVE WEST OF HOSPITAL TO BE ONLINE AND APPROVED PRIOR TO ANY WORK ON ACTUATED VALVE VAULT NEAR RODEO OR ELLIS PRV VAULT. TEMPORARY SERVICE TO AIRPORT TO BE MAINTAINED. REFERENCE SHEETS 03C001 AND 03C002.
7. 12" INSERTION VALVE ON INLET LINE TO ELLIS TANK TO BE INSTALLED BEFORE ANY WORK ON THE ELLIS VAULT. REFERENCE SHEET 01C004.
8. TEMPORARY BYPASS FOR MAGER TRANSMISSION LINE IS REQUIRED. REFERENCE SHEET 05C002.
9. SLURRY TRENCH AND PIPE PLUG SHALL BE INSTALLED AFTER NEW PUMP STATION IS ONLINE AND ACCEPTED, AND OLD PUMP STATION LINE(S) ABANDONMENT IS COMPLETE. REFERENCE SHEET 04C003.
10. INSTALLATIONS SHOWN ON SHEET 01C008 WITH THE EXCEPTION OF 12" SACRIFICIAL INSERTION VALVE AND THRUST BLOCK SHALL OCCUR ONLY AFTER PUMP STATION AND 4 MG ELLIS TANK ARE OPERATIONAL.
11. INSTALLATION OF 24"x16" RESTRAINED REDUCER WITH THRUST BLOCK, 16" VALVE AT ~ STA. 12+68, AND RESTRAINED JOINT WATER LINE INSTALL UP TO TEE AT STA. 11+50 SHOWN ON SHEET 01C008 MUST BE INSTALLED WITH THE VALVE OPERATIONAL WITHIN 48 HOURS OF MAIN LINE SHUT DOWN. THIS INSTALLATION MUST TAKE PLACE BEGINNING ON A SATURDAY.



PROPOSED MAGER PRV VAULT  
EXISTING 0.5 MG MAGER TANK - TO BE ABANDONED

EXISTING 2 MG ELLIS TANK - PROPOSED 4 MG TANK

MAGER ZONE

ELLIS ZONE

DILLON ZONE/  
UPPER ELLIS

EXISTING PUBLIC WORKS PRV VAULT

EXISTING DILLON PRV VAULT

EXISTING PIZZA HUT PRV VAULT

EXISTING CLUBHOUSE PRV VAULT

RODEO ZONE

HIGH PRESSURE ZONE

CLUBHOUSE ZONE

EXISTING INDUSTRIAL PARK (IP) PRV VAULT

INDUSTRIAL PARK ZONE

PROPOSED RODEO PRV VAULT AND AUTOMATIC ISOLATION VALVE VAULT

EXISTING 0.5 MG RODEO TANK - TO BE ABANDONED

WATER TREATMENT PLANT (WTP)

4 MG TANK "HIGH PRESSURE ZONE"



**HORIZONTAL AND VERTICAL CONTROL POINTS**

SYMBOL	POINT	DESCRIPTION	NORTHING	EASTING	ELEV
▲	CP-1	1/2" Rebar, on hill NE of Mount Hope Dr, next to fence just before Cemetery Entrance	847002.371	1978214.222	5532.640
▲	CP-3	1/2" Rebar, SW side of Rodeo Ground Entrance next to fence	844130.909	1973094.195	5570.100
▲	CP-4	1/2" Rebar, Located in field just NE of Hunt Field Airport & Buena Vista Dr, Entrance	844443.178	1974075.358	5265.045
▲	CP-5	Nail in Sidewalk, NE of Sinks Canyon Rd & Squaw Creek Rd, intersection near power pole	845877.814	1968929.059	5443.384
▲	CP-18	1/2" Rebar located behind SageWest Hospital (NE side) on hill	845918.308	1974710.348	5538.624
▲	BARCAP-100	WYDOT Survey Marker, 3.25" Cap, marked ELS10052_2017	841881.046	1967801.074	5498.111

GPS OBSERVATIONS COMPLETED BY HDR. BEARINGS AND DISTANCES ARE GRID VALUES, WYOMING STATE PLANE ZONE 4903, 1983 (2011) DISTANCES ARE IN U.S. SURVEY FOOT, VERTICAL DATUM NAVD 88.



## **Project Cost**

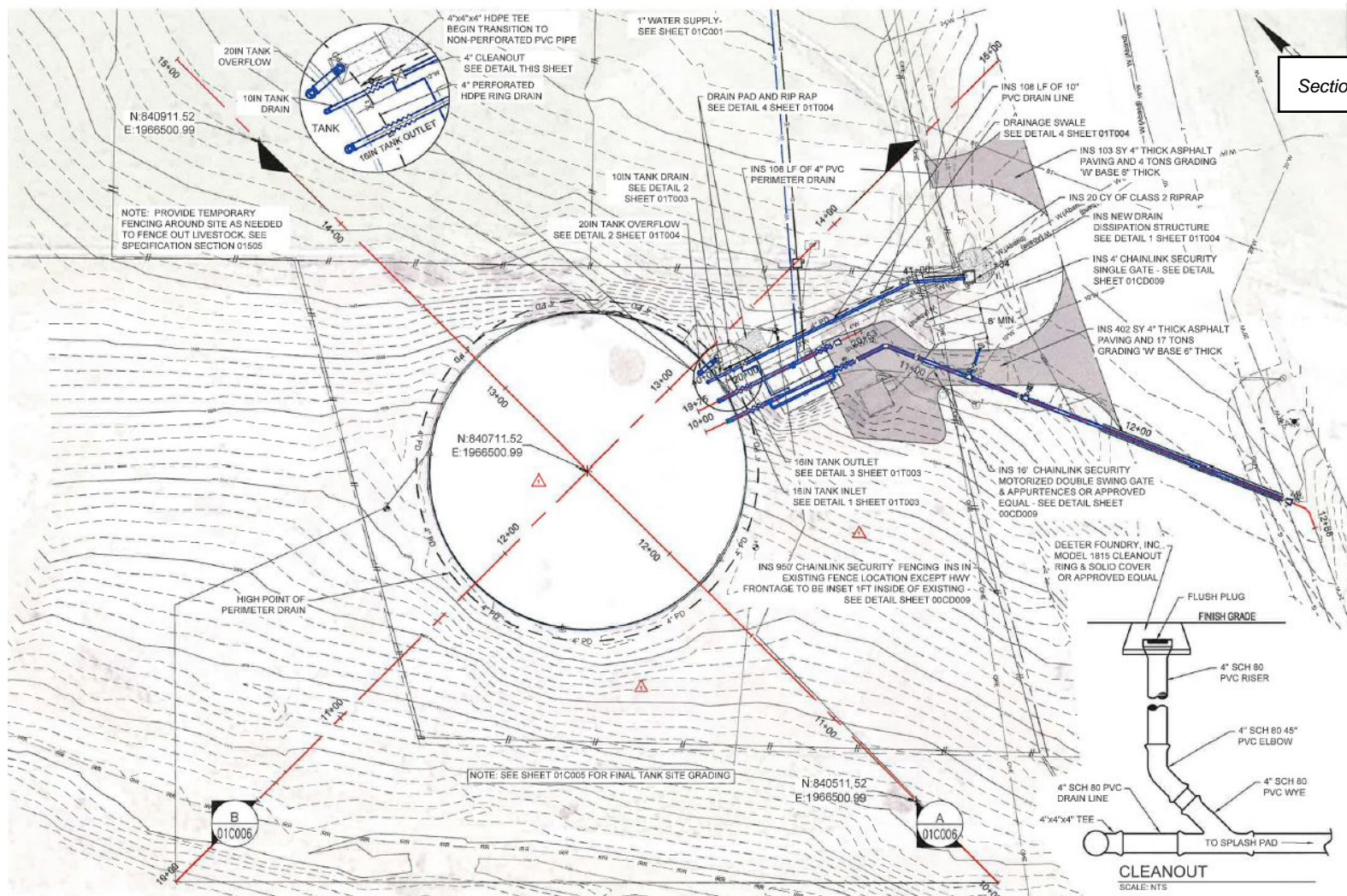
**Roughly \$10,000,000 project and funded almost entirely on grants.**

**Abandoned Mine Lands - 3.5 million**

**Wyoming Water Development - 6.5 million**







FINAL - TANK SITE PLAN

CLEANOUT  
SCALE: NTS































Section 3, Item A.









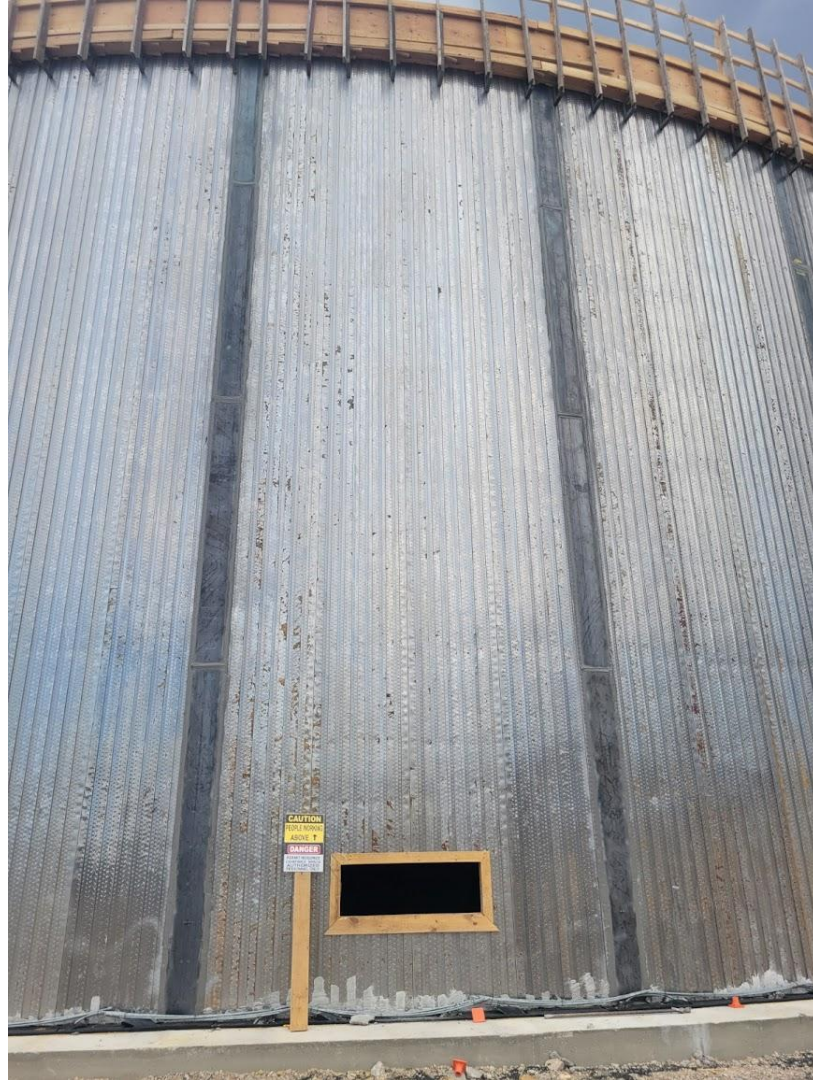


Section 3, Item A.





Section 3, Item A.







Section 3, Item A.



Section 3, Item A.











Section 3, Item A.

Section 3, Item A.



Section 3, Item A.









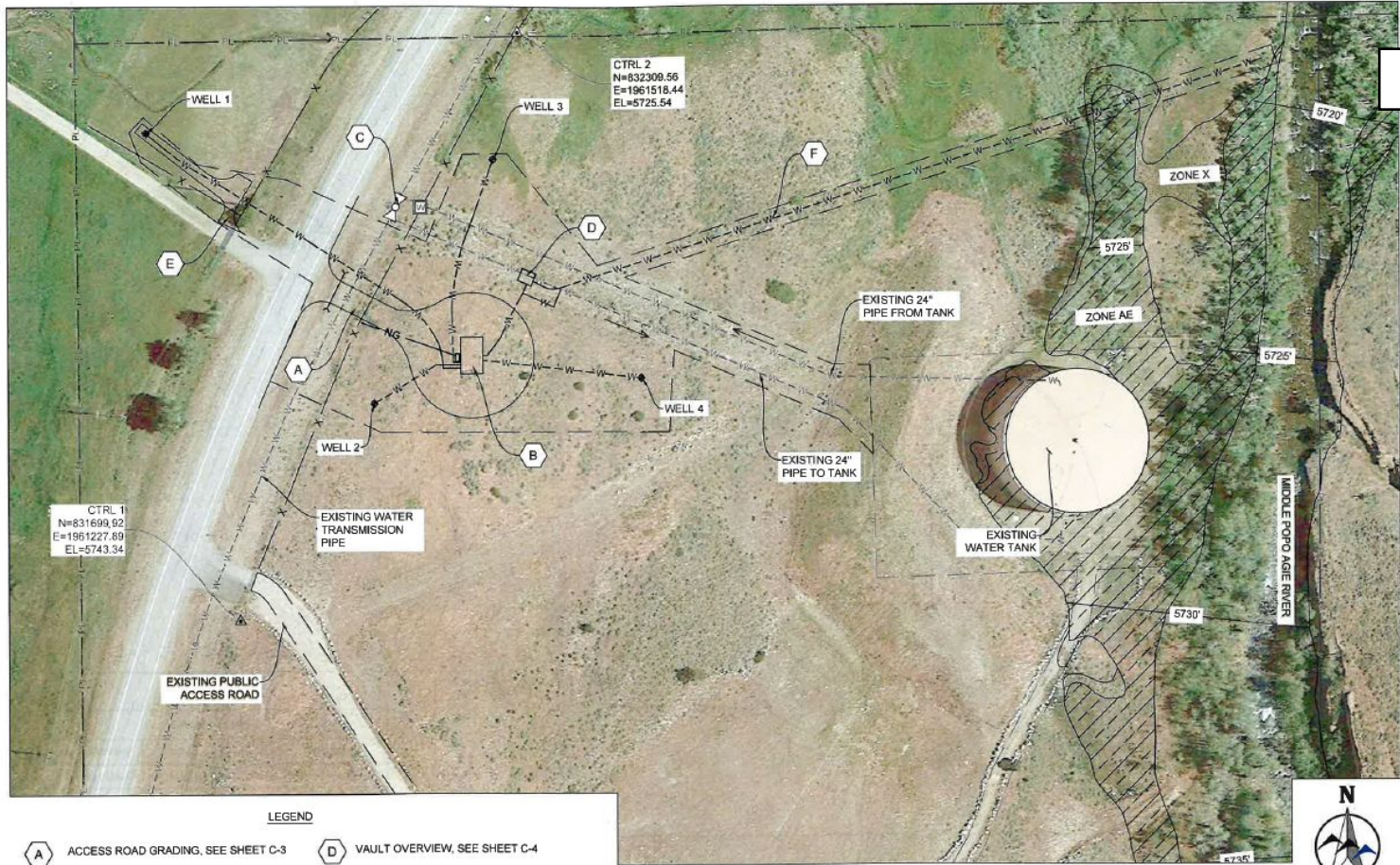
Section 3, Item A.





Section 3, Item A.

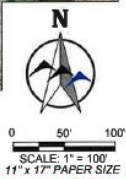
# Lander Wells and Transmission Pipeline



- LEGEND**
- A** ACCESS ROAD GRADING, SEE SHEET C-3
  - B** BUILDING OVERVIEW, SEE SHEET C-4
  - C** EXISTING 24" BUTTERFLY VALVE AND PROPOSED 24" BUTTERFLY VALVE, SEE SHEET C-4
  - D** VAULT OVERVIEW, SEE SHEET C-4
  - E** ACCESS ROAD TO WELL 1, SEE SHEET PP-1 TYPICAL SECTION
  - F** 12" DISCHARGE PIPE AND CHANNEL, SEE SHEET PP-6

**NOTES:**

- FEMA FLOOD HAZARD ZONES ARE SHOWN FOR THE MIDDLE POPO AGIE RIVER AND ARE EFFECTIVE AS OF SEPTEMBER 16, 2011. FLOOD DATA IS FROM FEMA'S FLOOD INSURANCE RATE MAP MAP NUMBER 56013C3367E. ZONE AE REPRESENTS AREAS WHERE BASE FLOOD ELEVATION HAS BEEN DETERMINED. BASE FLOOD ELEVATION CONTOURS ARE SHOWN. ZONE X REPRESENTS AREAS OF 0.2% ANNUAL CHANCE FLOOD.



**100% DESIGN**



# Project Cost and Schedule

**\$1.5 Million Dollar Cost Estimate Before Covid and \$4 Million Dollar Estimate Post Covid**

**Project is currently in bidding phase and City will try to secure 67% Grant from Water Development next month.**

**2024 Award with 2025 Construction**

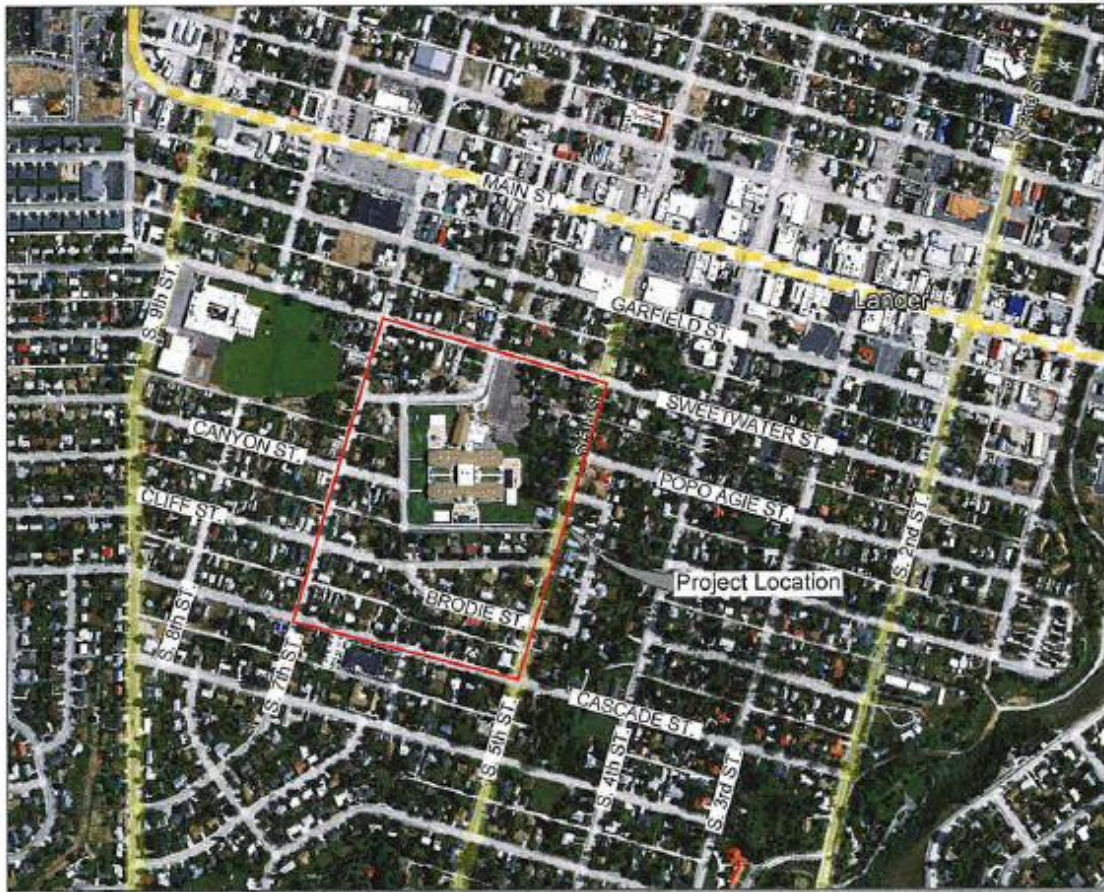
# Lander Sidewalk Improvements Proejct - Phase 1



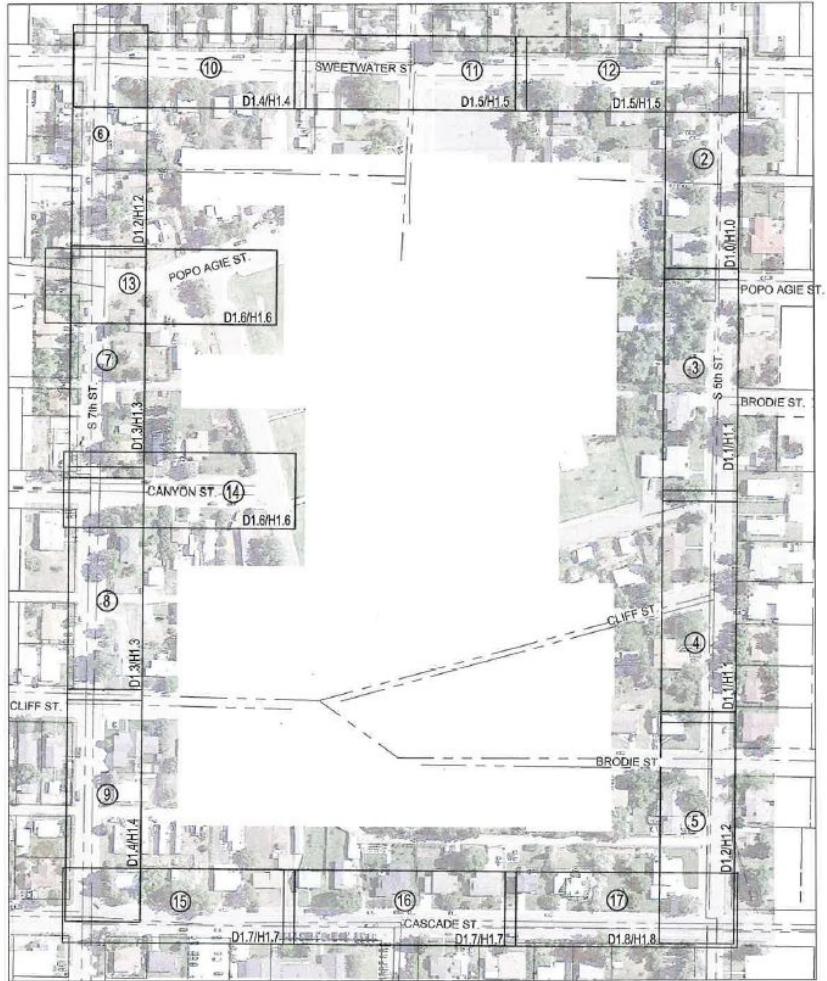
# Purpose

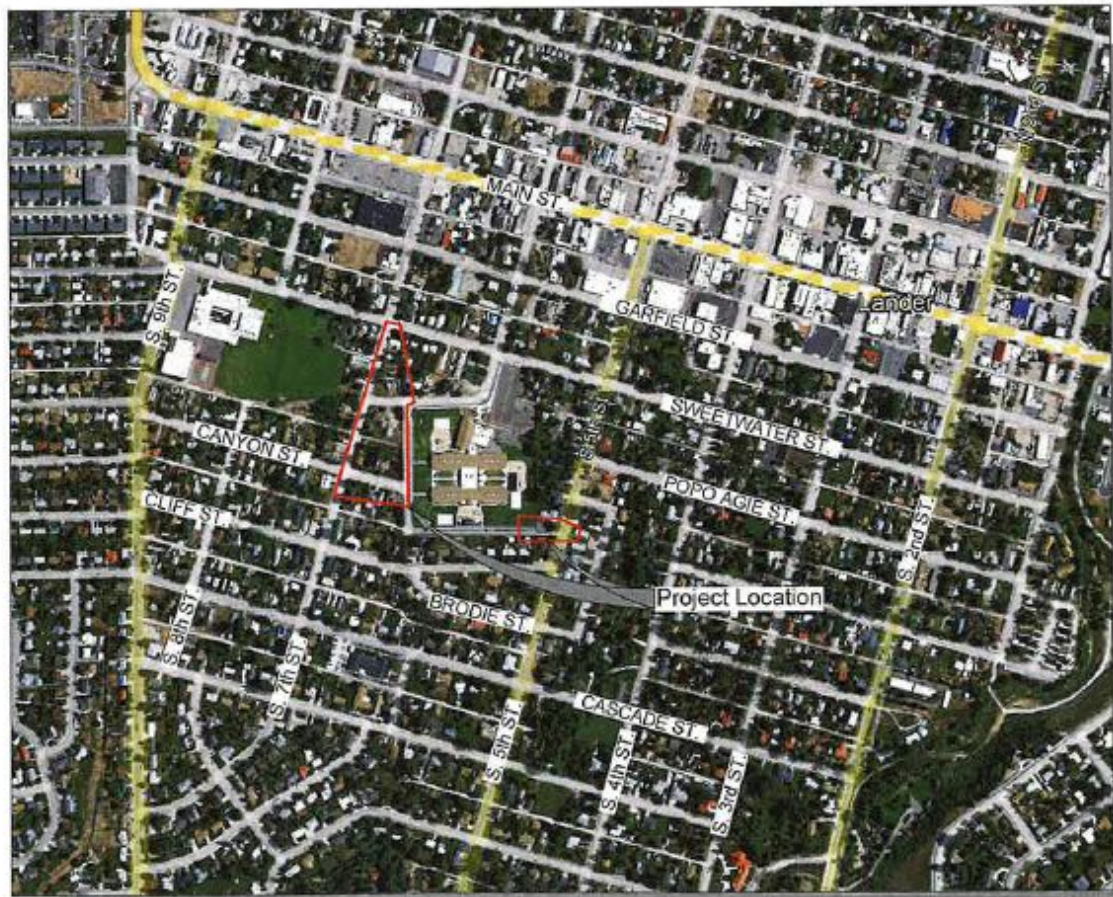
Improve Accessibility and Safety Around Gannett Peak Elementary School



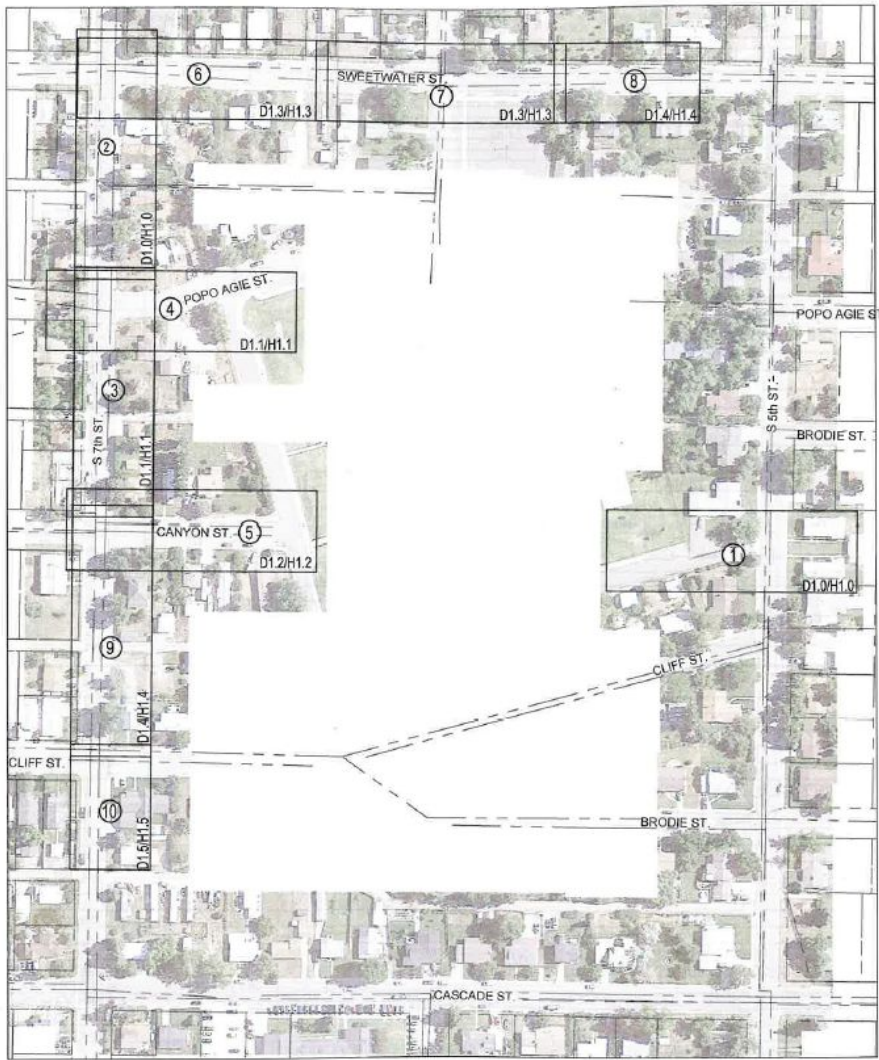


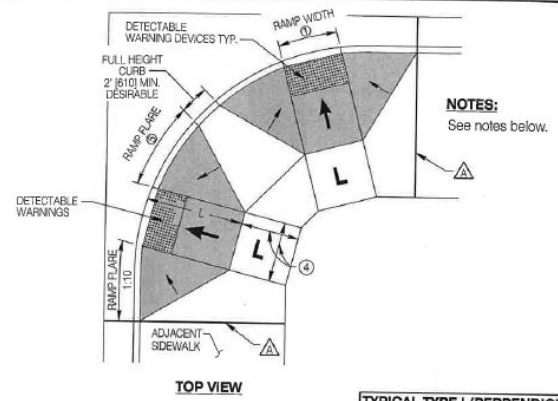
**Location Map**



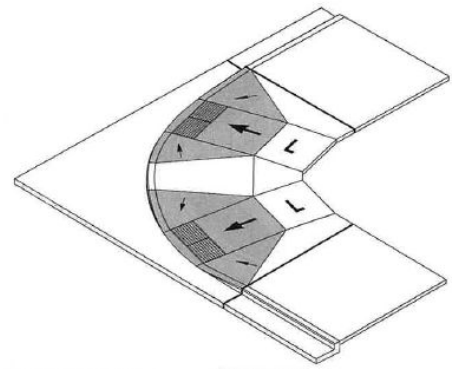


**Location Map**

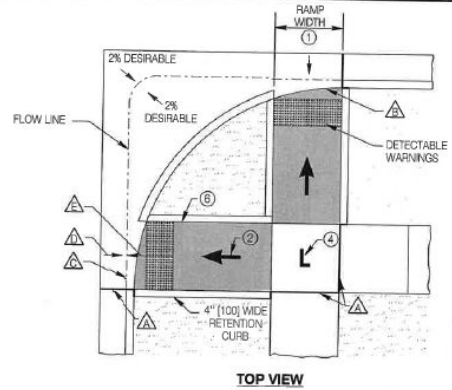




TYPICAL TYPE I (PERPENDICULAR) CORNER RAMPS WITH FLARED RETURNS

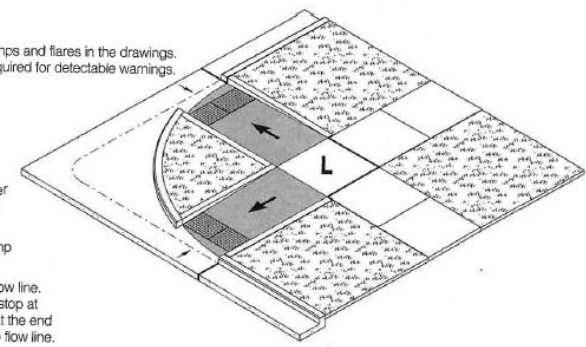


ISOMETRIC VIEW



TYPICAL TYPE I (PERPENDICULAR) CORNER RAMPS WITH VERTICAL RETURNS

- NOTES:**  
 Shaded areas are intended to highlight ramps and flares in the drawings. Color contrast from the sidewalk is only required for detectable warnings.
- Notes ① through ⑥ - See **SHEET 3**
- ⚠ Expansion Joint - See **SHEET 1**
  - ⚠ Not a grade break line.
  - ⚠ Make grade breaks (such as the gutter flow line) perpendicular to the ramps.
  - ⚠ Gutter counter slopes should be 2% maximum where possible at curb ramp locations.
  - ⚠ Typically ramp run should extend to flow line. However, when specified, ramp may stop at curb line. In those cases, beginning at the end of the ramp, slope downward at 2% to flow line.

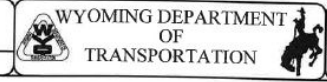


ISOMETRIC VIEW

DATE	BY	CHKD	APP'D
05-08-14	WYDOT	WYDOT	WYDOT

TYPE I PERPENDICULAR RAMPS (CONTINUED)

Note: Units shown in brackets [ ] are metric and are in millimeters (mm) unless other units are shown.



CONCRETE SIDEWALK AND ADA ACCESSIBILITY  
 STANDARD PLAN

STANDARD PLAN NUMBER  
**608-1B**  
 SHEET 4 of 8  
 NORTH ENGINEERING SERVICES  
 Rev. Issued JULY 2016

CITY OF LANDER  
 SIDEWALK IMPROVEMENT PROJECT -  
 PHASE I  
 LANDER, WYOMING

Prepared By:  
**FDR**  
 FDR ENGINEERING INC.  
 1025 E. 10TH ST.  
 P.O. BOX 407  
 LANDER, WY 82520

Scale:	Drawn By:	Checked By:
	WYDOT	WYDOT
Design Date:	Project Name:	Project No.:
05/08/2014	LANDER SIDEWALK IMPROVEMENT	608-1B
Contract Job No.:	Survey Date:	Revision:
10023055	FEB 2012	

Sheet No. 000000  
 WYDOT - STANDARD DETAILS  
 Sheet E1.6

# Lincoln Street Improvements Project



# Purpose

## Replace Failing Infrastructure on Lincoln Street

- Water
- Sewer
- Storm
- ADA
- Pavement

# PROJECT DRAWINGS FOR LINCOLN STREET IMPROVEMENTS PROJECT

Section 3, Item A.

## INDEX OF SHEETS

Sheet Number	Sheet Title
<b>LINCOLN STREET IMPROVEMENTS</b>	
<b>LINCOLN STREET WATER REPAIR</b>	
COVER	
1	GENERAL NOTES, LEGEND & CONTACTS
2	TYPICAL SECTIONS
3A	SUMMARY TABLES - SHEET 1 OF 4
3B	SUMMARY TABLES - SHEET 2 OF 4
3C	SUMMARY TABLES - SHEET 3 OF 4
3D	SUMMARY TABLES - SHEET 4 OF 4
4	SHEET INDEX MAP
<b>LINCOLN STREET SEWER REPAIR</b>	
P-1	PLAN SHEET - STA 0+00 TO 5+05
P-2	PLAN SHEET - STA 5+05 TO 10+00
P-3	PLAN SHEET - STA 10+00 TO 15+00
P-4	PLAN SHEET - STA 15+00 TO 20+00
P-5	PLAN SHEET - STA 20+00 TO 25+00
P-5B	4TH TO 5TH STREETS
P-6	PLAN SHEET - STA 25+00 TO 30+00
P-7	PLAN SHEET - STA 30+00 TO 35+00
P-7B	LINCOLN STREET - 600 BLOCK
P-8	PLAN SHEET - STA 35+00 TO 40+00
P-8B	735 & 775 LINCOLN STREET
P-8C	775 & 797 LINCOLN STREET
P-9	PLAN SHEET - STA 40+00 TO 45+00
P-10	PLAN SHEET - STA 45+00 TO 50+00
D-1	DETAIL SHEET 1 OF 9

D-2	DETAIL SHEET 2 OF 9
D-3	DETAIL SHEET 3 OF 9
D-4	DETAIL SHEET 4 OF 9
D-5	DETAIL SHEET 5 OF 9
D-6	DETAIL SHEET 6 OF 9
D-7	DETAIL SHEET 7 OF 9
D-8	DETAIL SHEET 8 OF 9
D-9	DETAIL SHEET 9 OF 9
D-10	STORM SEWER DETAILS
D-11	IRRIGATION DETAILS
D-12	IRRIGATION DETAILS
<b>LINCOLN STREET SEWER REPAIR</b>	
G-101	GENERAL NOTES, LEGEND & CONTACTS
C-100	SHEET INDEX MAP
C-101	PLAN & PROFILE - STA 0+00 TO 5+00
C-102	PLAN & PROFILE - STA 5+00 TO 10+00
C-103	PLAN & PROFILE - STA 10+00 TO 15+00
C-104	PLAN & PROFILE - STA 15+00 TO 20+00
C-105	PLAN & PROFILE - STA 20+00 TO 25+00
C-106	PLAN & PROFILE - STA 25+00 TO 30+00
C-107	PLAN & PROFILE - STA 30+00 TO 35+00
C-108	PLAN & PROFILE - STA 35+00 TO 40+00
C-109	PLAN & PROFILE - STA 40+00 TO 45+00
C-110	PLAN & PROFILE - STA 45+00 TO 50+00
C-501	SANITARY SEWER DETAILS - SHEET 1 OF 2
C-502	SANITARY SEWER DETAILS - SHEET 2 OF 2

SURVEY CONTROL AND STAKING POINTS	
SC-1	Survey Control Map with Point Code Legend
SV-1	Survey Points Existing - 1st to 3rd Street
SV-2	Survey Points Existing - 3rd to 4th Street
SV-3	Survey Points Exist / Prop - 4th to 6th Street
SV-3B	Survey Points Proposed - 4th to 5th Street
SV-4	Survey Points Exist / Prop - 6th to 8th Street
SV-4B	Survey Points Proposed - 6th to 7th Street
SV-4C	Survey Points Proposed - 7th to 8th Street
SV-4D	Survey Points Proposed - 7th to 8th Street
SV-5	Survey Points Existing - 8th to 10th Street
SV-6	Survey Points Information Tables
SV-7	Survey Points Information Tables
SV-8	Survey Points Information Tables
SV-9	Survey Points Information Tables



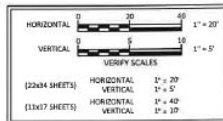
LOCATION MAP



NOT TO SCALE

OWNER INFORMATION  
CITY OF LANDER  
240 LINCOLN STREET  
LANDER, WYOMING 82520  
CONTACT: LANCE HOPKIN  
PHONE: 307-332-3956

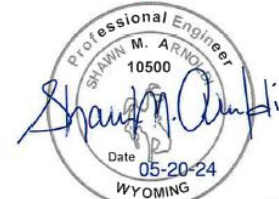
THIS NOTE APPLIES TO SHEETS P-1 TO P-10  
AND SHEETS C-101 TO C-110



## PROJECT VICINITY MAP



BIDDING  
DOCUMENTS  
ONLY



PROJECT ENGINEER

DATE	PLANS PROGRESS / REVISIONS	BY
9-1-2021	50% REVIEW DOCUMENTS	JPL
7-20-2023	SEWER/WATER/RESURFACING - 99% REVIEW DOCUMENTS	SV
11-17-2023	AGENCY REVIEW DOCUMENTS	SMA
05-20-2024	BIDDING DOCUMENTS ONLY	SMA



155 N 1st Street, Suite A | Lander, WY 82520  
Phone 307-335-5646 | Fax 307-362-6064





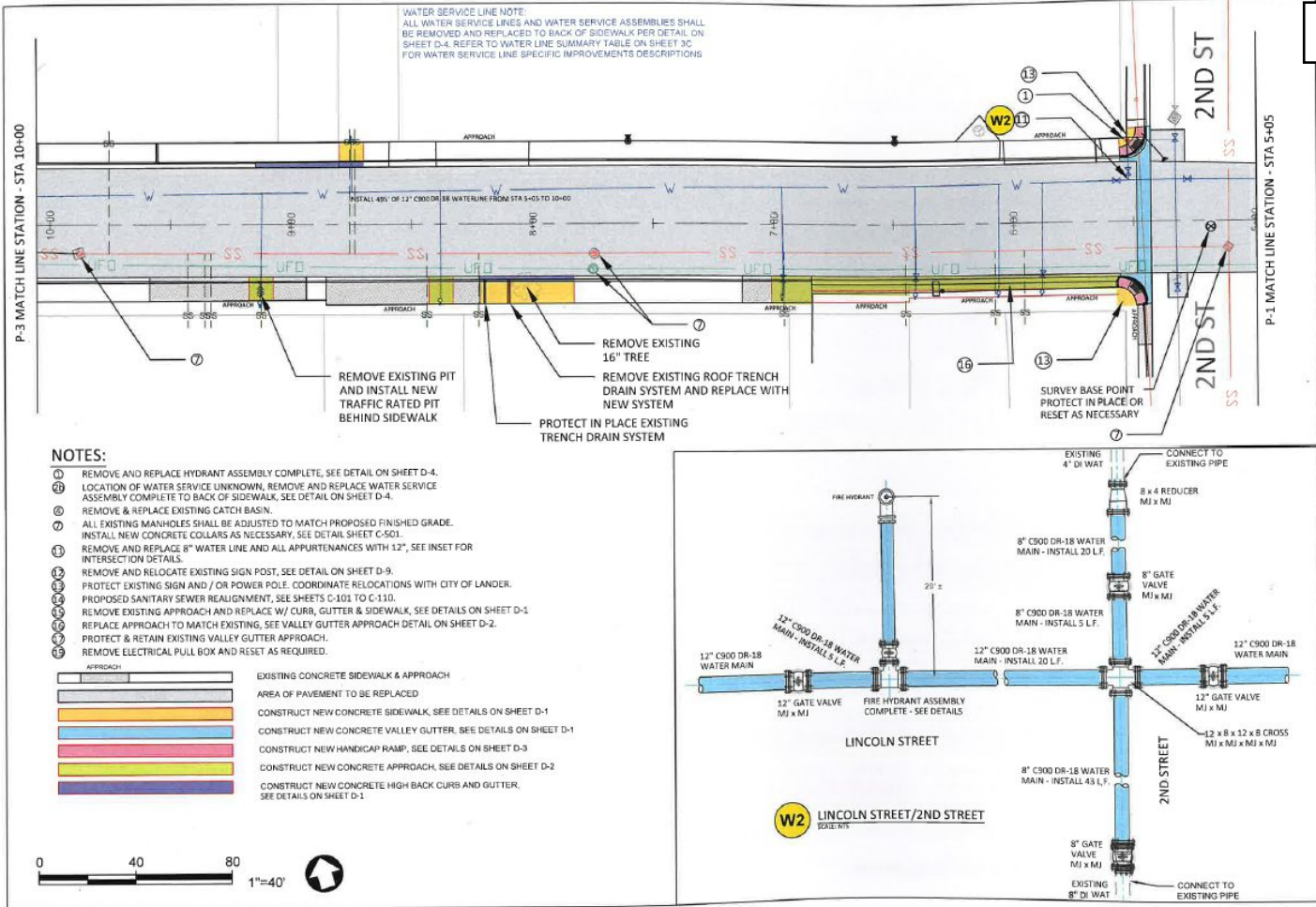
Section 3, Item A.



CITY OF LANDER  
240 LINCOLN STREET  
LANDER, WY 82520

REV: -  
DATE: 05-03-2024  
CITY OF LANDER  
**LINCOLN STREET WATER REPAIR  
STREET RECONSTRUCTION PROJECT**  
PLAN SHEET - STA 5+05 TO 10+00

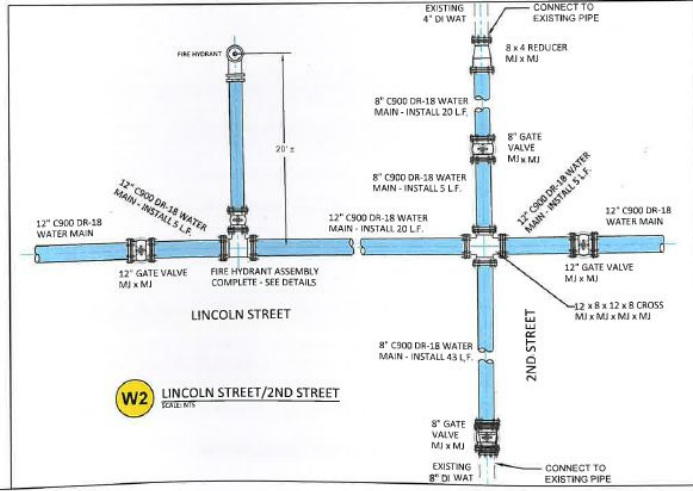
PROJECT NO.: 17063  
DRAWN BY: JPL  
REVIEWED BY: SMA  
SHEET NO.: **P-2**



**NOTES:**

- ① REMOVE AND REPLACE HYDRANT ASSEMBLY COMPLETE, SEE DETAIL ON SHEET D-4.
- ② LOCATION OF WATER SERVICE UNKNOWN, REMOVE AND REPLACE WATER SERVICE ASSEMBLY COMPLETE TO BACK OF SIDEWALK, SEE DETAIL ON SHEET D-4.
- ③ REMOVE & REPLACE EXISTING CATCH BASIN.
- ④ ALL EXISTING MANHOLES SHALL BE ADJUSTED TO MATCH PROPOSED FINISHED GRADE. INSTALL NEW CONCRETE COLLARS AS NECESSARY. SEE DETAIL SHEET C-501.
- ⑤ REMOVE AND REPLACE 8" WATER LINE AND ALL APPURTENANCES WITH 12", SEE INSET FOR INTERSECTION DETAILS.
- ⑥ REMOVE AND RELOCATE EXISTING SIGN POST, SEE DETAIL ON SHEET D-9.
- ⑦ PROTECT EXISTING SIGN AND / OR POWER POLE. COORDINATE RELOCATIONS WITH CITY OF LANDER.
- ⑧ PROPOSED SANITARY SEWER REALIGNMENT, SEE SHEETS D-101 TO C-110.
- ⑨ REMOVE EXISTING APPROACH AND REPLACE W/ CURB, GUTTER & SIDEWALK, SEE DETAILS ON SHEET D-1.
- ⑩ REPLACE APPROACH TO MATCH EXISTING, SEE VALLEY GUTTER APPROACH DETAIL ON SHEET D-2.
- ⑪ PROTECT & RETAIN EXISTING VALLEY GUTTER APPROACH.
- ⑫ REMOVE ELECTRICAL PULL BOX AND RESET AS REQUIRED.

	EXISTING CONCRETE SIDEWALK & APPROACH
	AREA OF PAVEMENT TO BE REPLACED
	CONSTRUCT NEW CONCRETE SIDEWALK, SEE DETAILS ON SHEET D-1
	CONSTRUCT NEW CONCRETE VALLEY GUTTER, SEE DETAILS ON SHEET D-1
	CONSTRUCT NEW HANDICAP RAMP, SEE DETAILS ON SHEET D-3
	CONSTRUCT NEW CONCRETE APPROACH, SEE DETAILS ON SHEET D-2
	CONSTRUCT NEW CONCRETE HIGH BACK CURBS AND GUTTER, SEE DETAILS ON SHEET D-1





# Cost and Contractor

Eng Estimate of 5 Million

Bid of 7.2 Million

Awarded to High Country This Month

Additional ARPA Funds?

2024/2025 Construction

# City Master Plan Update

**AYRES**  
PLANNING + DEVELOPMENT



## 2024 MASTER PLAN UPDATE AND PARKS AND RECREATION PLAN

### THURSDAY, JULY 18

2:00-4:00 PM

DROP-IN SESSION | COMMUNITY CENTER  
*PRESENTATION AT 3 PM*

5:00 PM

BOOTH | LANDER PRESENTS AT CITY PARK

### FRIDAY, JULY 19

7:30-10:30 AM

OPEN HOUSE | LANDER BAKE SHOP

7:30-10:30 AM

OPEN HOUSE | LINCOLN STREET BAKERY

11:00 AM-1:00 PM

OPEN HOUSE | LANDER SENIOR CENTER

2:00-4:00 PM

DROP-IN SESSION | LANDER LIBRARY  
*PRESENTATION AT 3 PM*

### SATURDAY, JULY 20

11:00 AM-4:00 PM BOOTH | PIG ROAST AT CITY PARK



**WE WANT TO HEAR FROM YOU!  
THIS IS AN OPPORTUNITY TO GET  
INVOLVED AND SHAPE OUR  
COMMUNITY'S FUTURE!**

UNABLE TO ATTEND?  
CONTACT [AEVEN@LANDERWYOMING.ORG](mailto:AEVEN@LANDERWYOMING.ORG)  
332-2870 X113

# Upcoming Projects



## Additional 44 Million in State Land and Investments Board Loan With Forgiveness

- Buena Vista
- Cascade and South 6th Street
- Sewer Lagoon Improvements
- Fremont Street Sewer
- 5th Street
- Baldwin Creek
- McFarlane Drive
- First Street
- Dillion Vista Subdivision

Questions??