

CITY OF LABELLE



AGENDA

Regular Commission Meeting

Thursday, December 11, 2025, at 5:30 PM

LaBelle Commission Chambers
481 West Hickpochee Ave
LaBelle, FL 33975

CITY COMMISSION:

Julie C. Wilkins, Mayor
Kevin Holland, Commissioner
Jackie Ratica, Commissioner
Bobbie Spratt, Commissioner
Hugo Vargas, Commissioner

ADMINISTRATION:

Tijauna Warner, MPA, MMC, Deputy City Clerk
Derek Rooney, Esq., City Attorney
Mitchell Wills, Superintendent PW

Agenda

1. **Call to Order**
2. **Roll Call**
3. **Invocation and Pledge of Allegiance**
4. **Additions of Emergency Basis From Mayor, Deletions and Approval of Agenda Items**
5. **Presentations**
 - A. SunnyGrove Landscaping Inc. Thank You Letter
6. **Consent Agenda Items for Consideration**

(Any commissioner or citizen may request to have an item removed from the consent agenda and placed on the regular agenda for further discussion.)

 - A. **Approval of November Check Register**
 - B. **Approval of Minutes:**
November 13, 2025 City Commission Meeting
 - C. **Approval of Staff Reports:**
 - HCSO- Lt. Allen Hudson
 - Fire Department- Chief Brent Stevens
 - Building Department- Mark Lynch
 - Code Enforcement- Zane Mungillo
 - D. K&B Pump & Electrical Emergency Purchase Ratification
 - E. LaBelle Fire Department Vehicle Purchase - 2026 Chevrolet Tahoe (Hardy Chevrolet)
 - F. RCM Utilities Description of Work
7. **Non-Public Hearing Items for Consideration**

(Limited to 15 minutes per item: 3-5 minutes optional presentation time with the remaining time for discussion by the Commission)

 - A. TREE REMOVAL PERMIT_RESIDENCE @ GRAND OAKS_#1511
8. **Public Hearings and/or Ordinances**
9. **Public Comment on Non-Agenda Items**

(Limited to 3 minutes per person)
10. **City Related Business by Commissioners**
11. **Adjournment**

Upcoming Meetings:

January 8, 2026 LPA & City Commission Meeting

*Be advised that the Commission may take action on items not listed on the agenda.

City of Labelle Office Closures:

December 23, 2025 at noon Staff Appreciation Luncheon

December 24-26, 2025 Christmas Holiday

January 1-2, 2026 New Year's Holiday

Meeting Records Request

Any person requesting the appeal of a decision of the City Commission will require a verbatim record of the proceedings and for that purpose will need to ensure that such verbatim record is made. Pursuant to FS. 286.0105, the record must include the testimony and evidence upon which the appeal is to be based. The City of LaBelle does not prepare or provide such verbatim record.

Notice of Commission Meetings and Agendas

The second Thursday of each month are regular meeting dates for the City Commission; special or workshop meetings may be called, whenever necessary. Commission Agendas are posted on the City's website on the Friday prior to each Commission meeting. A copy of the meeting audio and the complete agenda may be requested at tiawarner@citylabelle.com or 863-675-2872.

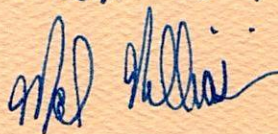
Americans with Disabilities Act

In accordance with the provisions of the Americans with Disabilities Act (ADA), this document can be made available in an alternate format upon request. Special accommodations can be provided upon request with five (5) days advance notice of any meeting, by contacting Deputy City Clerk Tijauna Warner at LaBelle City Hall, 481 W. Hickpochee Avenue, LaBelle, Florida. Phone No. 863-675-2872. Hearing Assistance: If hearing impaired, contact Florida Relay at 800-955-8771 (TDD) or 800-955-8770 (Voice), for assistance. (Reference: Florida Statute 286.26)

MAYOR WILKINS & THE BOARD OF
COMMISSIONERS.

THANK YOU FOR THE OPPORTUNITY
TO WORK WITH YOU ON THE OAK
PLANTING PROJECT IN BARRON
PARK. LOOKING FORWARD TO
WORKING WITH YOU AGAIN IN
THE FUTURE.

- JERAD CLUMP



CONGRATS
ON
100 YEARS!

A THANK YOU FROM

Sunny Grove Landscaping
& Nursery, Inc.

Range of Checking Accts: First to Last Range of Check Dates: 11/01/25 to 11/30/25
Report Type: All Checks Report Format: Super Condensed Check Type: Computer: Y Manual: Y Dir Deposit: Y

Check #	Check Date	Vendor	Amount Paid	Reconciled/Void	Ref Num
GEN FUND POOLED	GENERAL FUND POOLED CASH				
92078	11/03/25	ABP ACCENT BUSINESS PRODUCTS	150.89		9718
92079	11/03/25	AMARINES A.MARINES ROAD SERV & TIRE INC	1,015.00		9718
92080	11/03/25	BROWEL BROWN'S WELDING LLC	330.00		9718
92081	11/03/25	CTTF COUNTY TRANSPORTATION TRST FND	6,428.05		9718
92082	11/03/25	FROGS005 FROGS AUTO REPAIR DBA	1,609.00		9718
92083	11/03/25	JCW JULIE CRAICY WILKINS	104.11		9718
92084	11/03/25	JRATICA JACQUELINE RATICA	512.38		9718
92085	11/03/25	MCS MONRO COMMERCIAL SOLUTIONS	1,745.18		9718
92086	11/03/25	PBBI PITNEY BOWES BANK INC	405.00		9718
92087	11/03/25	WLMINC WOLFF'S LAWN MACHINES INC	2,039.73		9718
92088	11/03/25	WSC WINDMILL SPRINKLER CO., INC.	87.73		9718
92089	11/04/25	BSS BUSINESS SERVICES & SOLUTIONS	295.00		9720 Direct Deposit
92090	11/04/25	CHPC005 CPH CONSULTING, LLC	148.98		9720 Direct Deposit
92091	11/04/25	EDMUNDS EDMUNDS GOVTECH	19,980.08		9720 Direct Deposit
92092	11/04/25	FWEI FOUR WATERS ENGINEERING, INC	26,253.79		9720 Direct Deposit
92093	11/04/25	MJW MARY JO WILSON	142.50		9720 Direct Deposit
92094	11/04/25	MUNES MUNICIPAL EMERGENCY SERVICES	3,870.81		9720 Direct Deposit
92095	11/04/25	PTLLC PROTECTED TRUST LLC	2,311.82		9720 Direct Deposit
92096	11/04/25	THEMA005 THE MAKER'S MOTIF INC.	354.90		9720 Direct Deposit
92098	11/05/25	FRS FLORIDA RETIREMENT SYSTEM	31,931.10		9723
92097	11/07/25	SOFDU ST OF FL. DISBURSEMENT UNIT	127.34		9722
92099	11/07/25	OPENS005 OPEN SKY PRODUCTIONS LLC	11,500.00	11/07/25 VOID	9725 Direct Deposit (Reason: PYMT RETURNED)
92100	11/07/25	AMACS AMAZON CAPITAL SERVICES	5,200.66		9726
92101	11/07/25	PC PETTY CASH	400.00		9727
92103	11/12/25	ALLSTATE AMERICAN HERITAGE LIFE INS CO	2,889.39	11/12/25 VOID	9729 (Reason: CHANGE AMOUNT)
92104	11/12/25	BOBBIES BOBBIE SPRATT	31.95		9729
92105	11/12/25	CHS CALOOSA HUMANE SOCIETY	135.00		9729
92106	11/12/25	FMPT2 FLORIDA MUNICIPAL PENSION TRST	19,950.70		9729
92107	11/12/25	GAFS GREAT AMERICA FINANCIAL SVCS	345.96		9729
92108	11/12/25	JRATICA JACQUELINE RATICA	427.60		9729
92109	11/12/25	KME KENNY GLISSON	20.00		9729
92110	11/12/25	LEGALSH LEGAL SHIELD	73.75		9729
92111	11/12/25	SUNNY005 SUNNY GROVE LANDSCAPING	1,000.00		9729
92112	11/12/25	UNWAYLEE UNITED WAY OF LEE COUNTY	30.00		9729
92113	11/12/25	CMCP CLARKE MOSQUITO CONTROL PROD	1,799.94		9731 Direct Deposit
92114	11/12/25	CULL CULLIGAN WATER	164.50		9731 Direct Deposit
92115	11/12/25	DEXI DEX IMAGING LLC	355.72		9731 Direct Deposit
92116	11/12/25	INM INDEPENDENT NEWSMEDIA INC USA	77.52		9731 Direct Deposit
92117	11/12/25	LDRC LABELLE DOWNTOWN	1,741.00		9731 Direct Deposit
92118	11/12/25	LNATL GLOBE LIFE	454.59		9731 Direct Deposit
92119	11/12/25	TEMPC005 TEMPCO PEST CONTROL	1,655.00		9731 Direct Deposit
92120	11/12/25	THEMA005 THE MAKER'S MOTIF INC.	769.00		9731 Direct Deposit
92121	11/12/25	WRMLLC WORLD RISK MANAGEMENT	1,361.00		9731 Direct Deposit
92122	11/12/25	ALLSTATE AMERICAN HERITAGE LIFE INS CO	2,828.83		9733
92102	11/14/25	SOFDU ST OF FL. DISBURSEMENT UNIT	127.34		9728
92123	11/14/25	OPENS005 OPEN SKY PRODUCTIONS LLC	11,500.00		9734 Direct Deposit
92159	11/17/25	JRATICA JACQUELINE RATICA	151.30		9741
92125	11/18/25	AAP ADVANCE AUTO PARTS	169.55		9736

Check #	Check Date	Vendor	Amount Paid	Reconciled/Void	Ref Num
GEN FUND POOLED	GENERAL FUND POOLED CASH	Continued			
92126	11/18/25	ABP ACCENT BUSINESS PRODUCTS	68.34		9736
92127	11/18/25	ALADT005 Aladtec, LLC	2,700.00		9736
92128	11/18/25	AMARINES A.MARINES ROAD SERV & TIRE INC	20.00		9736
92129	11/18/25	BESPO005 Bespoke Unlimited LLC DBA	84.95		9736
92130	11/18/25	C-000005 CASSANDRA M RAMIREZ	500.00		9736
92131	11/18/25	CENTLINK CENTURYLINK	768.18		9736
92132	11/18/25	CHS CALOOSA HUMANE SOCIETY	1,345.12		9736
92133	11/18/25	COMCAST COMCAST	235.95		9736
92134	11/18/25	CPC CAMPBELL PET COMPANY	2,292.01		9736
92135	11/18/25	DOOPE005 DOOPER POOPERS PORTA POTTIES	1,200.00		9736
92136	11/18/25	FDOR FLORIDA DEPT OF REVENUE	98.50		9736
92137	11/18/25	FPL FLORIDA POWER & LIGHT	174.07		9736
92138	11/18/25	HOMDEF HOMETEAM PEST DEFENSE INC	1,039.50		9736
92139	11/18/25	HRCH HENDRY REGIONAL CORP. HEALTH	795.00		9736
92140	11/18/25	ISBC IPITOMY SMARTER BUSINESS COMMU	73.15		9736
92141	11/18/25	LISAA LISA AWBREY	42.00		9736
92142	11/18/25	MGL MGL PRINTING SOLUTIONS	484.00		9736
92143	11/18/25	NATIO010 NATIONAL RESCUE CONSULTANTS	3,950.00		9736
92144	11/18/25	SWCO SHERWIN WILLIAMS CO.	2,819.57		9736
92145	11/18/25	WOCF WATERWAY OF CENTRAL FL., LLC	2,509.20		9736
92146	11/18/25	AES AIM ENGINEERING & SURVEYING	8,951.37		9739 Direct Deposit
92147	11/18/25	CHPC005 CPH CONSULTING, LLC	33,100.07		9739 Direct Deposit
92148	11/18/25	CQL CAPTAINS QUICK LUBE	269.00		9739 Direct Deposit
92149	11/18/25	FWEI FOUR WATERS ENGINEERING, INC	19,532.50		9739 Direct Deposit
92150	11/18/25	KTC KELLY TRACTOR COMPANY	202.24		9739 Direct Deposit
92151	11/18/25	LILLIO05 LILLIAN M DAVENPORT	213.60		9739 Direct Deposit
92152	11/18/25	MAUJEN MAULDIN & JENKINS LLC	5,000.00		9739 Direct Deposit
92153	11/18/25	NP NEWS-PRESS	1,484.88		9739 Direct Deposit
92154	11/18/25	POSTIVE POSITIVE PROMOTIONS INC.	1,115.50		9739 Direct Deposit
92155	11/18/25	PRM PUBLIC RISK MANAGEMENT	59,424.26		9739 Direct Deposit
92156	11/18/25	QUALITY QUALITY 1 AUTO CARE INC	1,773.13		9739 Direct Deposit
92157	11/18/25	SSW SHARON SANDERS WHITE	165.00		9739 Direct Deposit
92158	11/18/25	TFSLLC TEN-8 FIRE & SAFETY, LLC	550.00		9739 Direct Deposit
92124	11/21/25	SOFDU ST OF FL. DISBURSEMENT UNIT	127.34		9735
92161	11/21/25	VISA VISA	33,681.80		9744
92162	11/24/25	AFL AMERICAN FAMILY LIFE ASSR CO.	2,104.10		9745
92163	11/24/25	BCC BOARD OF COUNTY COMMISSIONERS	182.71		9745
92164	11/24/25	BCCHCSO BOARD OF CO.COMM. C/O HCSO	280,000.00		9745
92165	11/24/25	C-000006 UNITED WAY OF LEE COUNTY INC	250.00		9745
92166	11/24/25	C-000007 JESUS OLVERA	500.00		9745
92167	11/24/25	CC-C CRACKER COOKIN' & CATERIN'	6,521.04		9745
92168	11/24/25	COLW2 CITY OF LABELLE WATER AND SANI	3,048.15		9745
92169	11/24/25	CTTF COUNTY TRANSPORTATION TRST FND	8,442.55		9745
92170	11/24/25	HO HOMERO OLIVAREZ, JR	225.00		9745
92171	11/24/25	VAH VISION ACE HARDWARE-LABELLE	0.00	11/24/25 VOID	0
92172	11/24/25	VAH VISION ACE HARDWARE-LABELLE	0.00	11/24/25 VOID	0
92173	11/24/25	VAH VISION ACE HARDWARE-LABELLE	2,290.99		9745
92174	11/24/25	BPE BARRY'S POWER EQUIPMENT	18.36		9748 Direct Deposit
92175	11/24/25	JLRFI005 JLR FIRE INSPECTIONS LLC	3,166.00		9748 Direct Deposit
92176	11/24/25	MJW MARY JO WILSON	142.50		9748 Direct Deposit
92160	11/25/25	SOFDU ST OF FL. DISBURSEMENT UNIT	127.34		9743

Check #	Check Date	Vendor	Amount Paid	Reconciled/Void	Ref Num
GEN FUND POOLED GENERAL FUND POOLED CASH Continued					
Checking Account Totals		Paid	Void	Amount Paid	Amount Void
Checks:		61	3	436,078.71	2,889.39
Direct Deposit:		34	1	208,344.56	11,500.00
Total:		95	4	644,423.27	14,389.39
UTILITY DEPOSIT Water Revenue Deposit					
2651	11/18/25	U-000291 RODRIGUEZ RAMOS, EMERITA	62.08		9737
2652	11/18/25	U-000292 EDWARDS, EARLE E III	77.12		9737
2653	11/18/25	U-000293 SABELLA HOLDINGS LLC	49.12		9737
2654	11/18/25	U-000294 VETS TRANSITIONAL HOME HRY CTY	46.42		9737
2655	11/18/25	U-000295 GONZALEZ, VERONICA GUADALUPE	94.08		9737
2656	11/18/25	U-000296 GUZMAN RAMIREZ, JUAN CARLOS	94.08		9737
2657	11/18/25	U-000297 GLOBAL BUSINESS GROUP J&L, LLC	221.66		9737
2658	11/21/25	U-000159 MORENO, JESSE	65.00		9742
2659	11/24/25	U-000298 SABELLLA HOLDINGS LLC	155.00		9746
2660	11/24/25	U-000299 HOEFFLIGER, ROGER & CAROL	60.39		9746
2661	11/24/25	U-000300 BARBER, KIMBERLY DAWN	7.19		9746
Checking Account Totals		Paid	Void	Amount Paid	Amount Void
Checks:		11	0	932.14	0.00
Direct Deposit:		0	0	0.00	0.00
Total:		11	0	932.14	0.00
UTILITY POOLED UTILITY FUND POOLED CASH					
1173	11/03/25	ABP ACCENT BUSINESS PRODUCTS	94.23		9719
1174	11/03/25	CORE CORE & MAIN LP	1,163.00		9719
1175	11/03/25	CTTF COUNTY TRANSPORTATION TRST FND	897.90		9719
1176	11/03/25	TRIPP005 TRIPP ELECTRIC MOTORS, INC.	11,340.78		9719
1177	11/03/25	WILADA US WATER SERVICE CORP	351,340.27		9719
1178	11/04/25	EDMUNDS EDMUNDS GOVTECH	5,392.18		9721 Direct Deposit
1179	11/04/25	FWEI FOUR WATERS ENGINEERING, INC	26,824.50		9721 Direct Deposit
1180	11/04/25	KBPI K&B PUMP & ELECTRICAL, LLC	10,030.07		9721 Direct Deposit
1181	11/04/25	PTLLC PROTECTED TRUST LLC	469.30		9721 Direct Deposit
1182	11/04/25	SSSES SOUTHERN SEWER EQUIPMENT SALES	671.99		9721 Direct Deposit
1183	11/05/25	FRS FLORIDA RETIREMENT SYSTEM	7,560.55		9724
1184	11/12/25	WASTEC WASTE CONNECTIONS INC	91,631.82		9730
1185	11/12/25	BMI BADGER METER INC.	491.04		9732 Direct Deposit
1186	11/12/25	CULL CULLIGAN WATER	50.00		9732 Direct Deposit
1187	11/12/25	INDUSCO INDUSCO ENVIRONMENTAL	19,825.00		9732 Direct Deposit
1188	11/12/25	SSSES SOUTHERN SEWER EQUIPMENT SALES	12,001.14		9732 Direct Deposit
1189	11/12/25	UTISOL UTILITY SOLUTIONS & AUTOMATION	25,170.20		9732 Direct Deposit
1190	11/18/25	ABP ACCENT BUSINESS PRODUCTS	64.27		9738
1191	11/18/25	CENTLINK CENTURYLINK	256.06		9738
1192	11/18/25	FPL FLORIDA POWER & LIGHT	1,036.01		9738
1193	11/18/25	ISBC IPITOMY SMARTER BUSINESS COMMU	24.39		9738
1194	11/18/25	LUMEN LUMEN	1,078.50		9738
1195	11/18/25	HARNRO HARN R/O SYSTEMS, INC	9,363.70		9740 Direct Deposit
1196	11/18/25	KBPI K&B PUMP & ELECTRICAL, LLC	33,840.85		9740 Direct Deposit
1197	11/18/25	PRM PUBLIC RISK MANAGEMENT	9,940.77		9740 Direct Deposit
1198	11/18/25	TETRA005 TETRA TECH, INC	4,095.00		9740 Direct Deposit
1199	11/18/25	USAB USA BLUEBOOK	14,274.87		9740 Direct Deposit
1200	11/24/25	COLW2 CITY OF LABELLE WATER AND SANI	2,770.01		9747
1201	11/24/25	CTTF COUNTY TRANSPORTATION TRST FND	568.04		9747

Check #	Check Date	Vendor	Amount Paid	Reconciled/Void	Ref Num
UTILITY POOLED UTILITY FUND POOLED CASH Continued					
1202	11/24/25	VAH VISION ACE HARDWARE-LABELLE	389.70		9747
1203	11/24/25	KGAUSE KATHARINA GAUSE	150.00		9749 Direct Deposit
1204	11/24/25	WOODARD WOODARD & CURRAN INC	156,552.42		9749 Direct Deposit
Checking Account Totals					
		Paid Void Amount Paid Amount Void			
		Checks: 15 0 470,215.53 0.00			
		Direct Deposit: 17 0 329,143.03 0.00			
		Total: 32 0 799,358.56 0.00			
Report Totals					
		Paid Void Amount Paid Amount Void			
		Checks: 87 3 907,226.38 2,889.39			
		Direct Deposit: 51 1 537,487.59 11,500.00			
		Total: 138 4 1,444,713.97 14,389.39			

Totals by Year-Fund					
Fund Description	Fund	Expend Total	Revenue Total	G/L Total	Total
GENERAL FUND	5-001	323,007.94	0.00	0.00	323,007.94
WATER FUND	5-041	54,824.58	0.00	0.00	54,824.58
SEWER FUND	5-042	404,882.26	0.00	0.00	404,882.26
Year Total:		782,714.78	0.00	0.00	782,714.78
GENERAL FUND	6-001	299,815.63	0.00	21,599.70	321,415.33
WATER FUND	6-041	165,281.70	0.00	0.00	165,281.70
SEWER FUND	6-042	82,738.20	0.00	0.00	82,738.20
SANITATION OPERATION FUND	6-043	91,631.82	0.00	0.00	91,631.82
Year Total:		639,467.35	0.00	21,599.70	661,067.05
WATER FUND	x-041	230.00	0.00	0.00	230.00
SEWER FUND	x-042	324.41	0.00	0.00	324.41
SANITATION OPERATION FUND	x-043	377.73	0.00	0.00	377.73
Year Total:		932.14	0.00	0.00	932.14
Total of All Funds:		1,423,114.27	0.00	21,599.70	1,444,713.97

Totals by Fund					
Fund Description	Fund	Expend Total	Revenue Total	G/L Total	Total
GENERAL FUND	001	622,823.57	0.00	21,599.70	644,423.27
WATER FUND	041	220,336.28	0.00	0.00	220,336.28
SEWER FUND	042	487,944.87	0.00	0.00	487,944.87
SANITATION OPERATION FUND	043	92,009.55	0.00	0.00	92,009.55
Total of All Funds:		1,423,114.27	0.00	21,599.70	1,444,713.97

Fund Description	Fund	Current	Prior Rcvd	Prior Open	Paid Prior	Fund Total
GENERAL FUND	5-001	323,007.94	0.00	0.00	0.00	323,007.94
WATER FUND	5-041	54,824.58	0.00	0.00	0.00	54,824.58
SEWER FUND	5-042	404,882.26	0.00	0.00	0.00	404,882.26
Year Total:		782,714.78	0.00	0.00	0.00	782,714.78
GENERAL FUND	6-001	299,815.63	0.00	0.00	0.00	299,815.63
WATER FUND	6-041	165,281.70	0.00	0.00	0.00	165,281.70
SEWER FUND	6-042	82,738.20	0.00	0.00	0.00	82,738.20
SANITATION OPERATION FUND	6-043	91,631.82	0.00	0.00	0.00	91,631.82
Year Total:		639,467.35	0.00	0.00	0.00	639,467.35
WATER FUND	x-041	230.00	0.00	0.00	0.00	230.00
SEWER FUND	x-042	324.41	0.00	0.00	0.00	324.41
SANITATION OPERATION FUND	x-043	377.73	0.00	0.00	0.00	377.73
Year Total:		932.14	0.00	0.00	0.00	932.14
Total of All Funds:		1,423,114.27	0.00	0.00	0.00	1,423,114.27

CITY OF LABELLE



MINUTES

Regular Commission Meeting

Thursday, November 13, 2025, at 5:30 PM

LaBelle Commission Chambers
481 West Hickpochee Ave
LaBelle, FL 33975

CITY COMMISSION:

Julie C. Wilkins, Mayor
Kevin Holland, Commissioner
Jackie Ratica, Commissioner
Bobbie Spratt, Commissioner
Hugo Vargas, Commissioner

ADMINISTRATION:

Tijauna Warner, MPA, MMC, Deputy City Clerk
Derek Rooney, Esq., City Attorney
Mitchell Wills, Superintendent PW

Minutes

1. Call to Order

The meeting was called to order by Vice Mayor Ratica at 5:30 PM.

2. Roll Call

PRESENT

Mayor Julie C. Wilkins

Vice Mayor Jackie Ratica

Commissioner Bobbie Spratt

Commissioner Hugo Vargas

Commissioner Kevin Holland

City Attorney Derek Rooney

Deputy City Clerk Tijauna Warner

Motion made by Commissioner Spratt to approve Mayor Julie C. Wilkins attending via phone, Seconded by Commissioner Vargas. Vice Mayor Ratica called for the question. Motion passed unanimously.

Voting Yea: Mayor Wilkins, Vice Mayor Ratica, Commissioner Spratt, Commissioner Vargas, Commissioner Holland

3. Invocation and Pledge of Allegiance

Commissioner Holland led the invocation, Commissioner Spratt led the Pledge of Allegiance.

4. Additions of Emergency Basis From Mayor, Deletions and Approval of Agenda Items

5. Presentations

A. LaBelle Chamber of Commerce - Chris Hernandez, President

6. Consent Agenda Items for Consideration

(Any commissioner or citizen may request to have an item removed from the consent agenda and placed on the regular agenda for further discussion.)

A. Approval of October Check Register

B. Approval of October Minutes:

October 09, 2025 City Commission Meeting Minutes

C. Approval of Staff Reports:

-HCSO- Lt. Allen Hudson

-Fire Department- Chief Brent Stevens

-Building Department- Mark Lynch

-Code Enforcement- Zane Mungillo

Regular Commission Meeting
November 13, 2025

- D. RESOLUTION 2025-20 A RESOLUTION OF THE CITY COMMISSION OF THE CITY OF LABELLE, FLORIDA; HENDRY COUNTY, FLORIDA; ADOPTING THE 2025 REVISED HENDRY COUNTY LOCAL MITIGATION STRATEGY AS A PLAN.

- E. Property Disposition for Auction - Jeremiah Elio

Motion made by Commissioner Vargas to approve Consent Agenda Items excluding Item 6E: Holiday Greetings WAFC 2025, Seconded by Commissioner Spratt. Vice Mayor Ratica called for the question. Motion passed unanimously.
Voting Yea: Mayor Wilkins, Vice Mayor Ratica, Commissioner Spratt, Commissioner Vargas, Commissioner Holland

7. Non-Public Hearing Items for Consideration

(Limited to 15 minutes per item: 3-5 minutes optional presentation time with the remaining time for discussion by the Commission)

- A. Holiday Greetings WAFC 2025

Motion made by Commissioner Spratt to not approve Holiday Greetings WAFC 2025, Seconded by Commissioner Holland. Vice Mayor Ratica called for the question. Motion passed unanimously.
Voting Yea: Mayor Wilkins, Vice Mayor Ratica, Commissioner Spratt, Commissioner Vargas, Commissioner Holland

- B. Temporary Use & Special Events Application Smoke Under the Oaks

Motion made by Commissioner Vargas to approve the Temporary Use & Special Events Application Smoke Under the Oaks, Seconded by Commissioner Spratt. Vice Mayor Ratica called for the question. Motion passed (4-1).
Voting Yea: Mayor Wilkins, Vice Mayor Ratica, Commissioner Spratt, Commissioner Vargas
Voting Nay: Commissioner Holland

- C. Approval of a Paralegal Position (Salary \$90,000)

Mayor Wilkins and Derek Rooney gave a brief description of the paralegal position. A discussion ensued. The commission requested a job description for the paralegal position.

8. Public Hearings and/or Ordinances

- A. ORDINANCE 2025 - 03 (first reading) AN ORDINANCE OF THE CITY OF LABELLE, FLORIDA; AMENDING THE CITY OF LABELLE CODE, CHAPTER 11, ARTICLE V, STREET VENDING; AND AMENDING APPENDIX B, LAND DEVELOPMENT CODE, CHAPTER 4, ARTICLE V, SUPPLEMENTARY DISTRICT REGULATIONS, CREATING SECTION 4-92; AMENDING REGULATIONS RELATING TO MOBILE VENDING; PROVIDING FOR RATIFICATION OF PRIOR ACTIONS; PROVIDING FOR CODIFICATION, SEVERABILITY, CONFLICTS AND AN EFFECTIVE DATE.

Derek Rooney read Ordinance 2025-03 title into the record.

Patty Kulak gave a brief explanation of Ordinance 2025-03.

Public Hearing Open

Public comments made by the following: Jericka Mungillo, Zane Mungillo, and Mitchell Wills.

Regular Commission Meeting
November 13, 2025

Public Hearing Closed

Motion made by Commissioner Vargas to table Ordinance 2025-03, Seconded by Commissioner Spratt. Vice Mayor Ratica called for the question. A discussion ensued. Motion passed (4-1).
Voting Yea: Vice Mayor Ratica, Commissioner Spratt, Commissioner Vargas, Commissioner Holland
Voting Nay: Mayor Wilkins

9. Public Comment on Non-Agenda Items

(Limited to 3 minutes per person)

10. City Related Business by Commissioners

Commissioner Holland requested adding April Aguilar to the agenda to discuss accepting credit card payments for deposits.

April Aguilar gave a brief description of the city's procedures for deposit payments and an explanation to why the city does not take credit card payments. A discussion ensued.

11. Adjournment

Motion made by Commissioner Spratt to adjourn the meeting, Seconded by Commissioner Vargas. Vice Mayor Ratica called for the question. Motion passed unanimously.
Voting Yea: Mayor Wilkins, Vice Mayor Ratica, Commissioner Spratt, Commissioner Vargas, Commissioner Holland

There being no further business to discuss, Vice Mayor Ratica adjourned the meeting at 7:03 PM.

Julie C. Wilkins, Mayor

ATTEST: Tijauna Warner, MPA, MMC, City Clerk

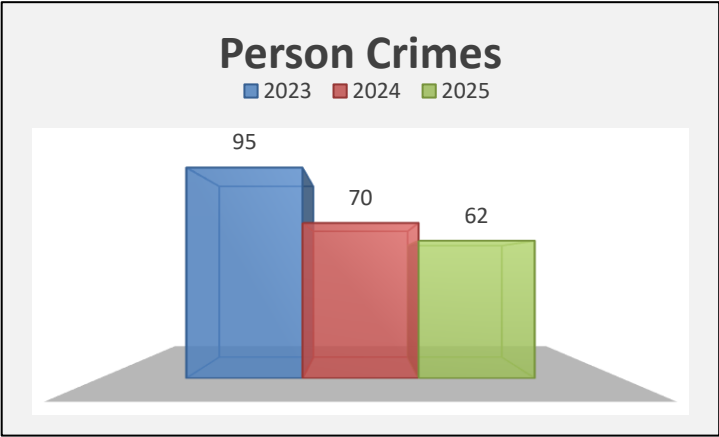
Hendry County Sheriff's Office

City of LaBelle Crime Report for December 2025 Meeting

Dates: 11/01-11/28

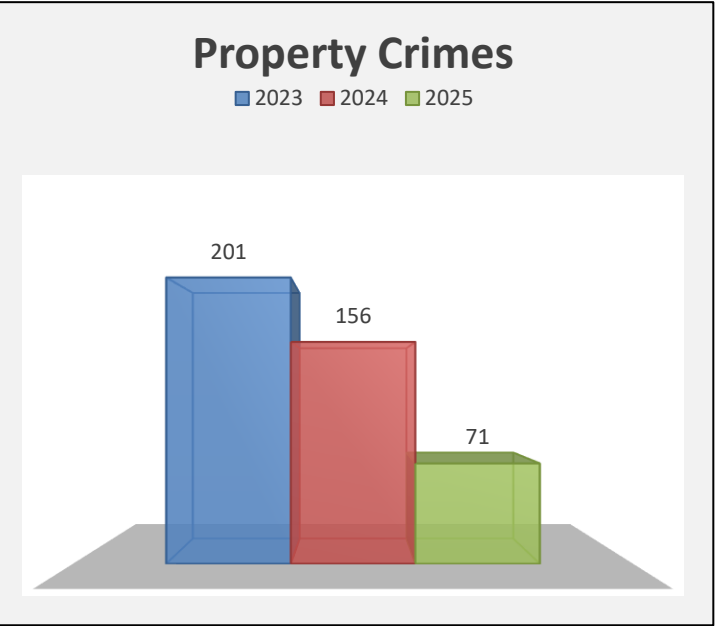
Person Crimes	Nov.	Oct.	Sept.	Aug.
Homicide	0	0	0	0
Robbery	0	0	0	0
Sex Crime	1	1	2	2
Assault	0	0	0	2
Battery - Simple	1	0	3	4
Domestic	2	2	1	2
TOTAL	4	3	6	10

YTD 2025	YTD 2024	YTD 2023
0	0	0
0	2	1
11	12	16
10	5	13
17	28	35
24	23	30
62	70	95



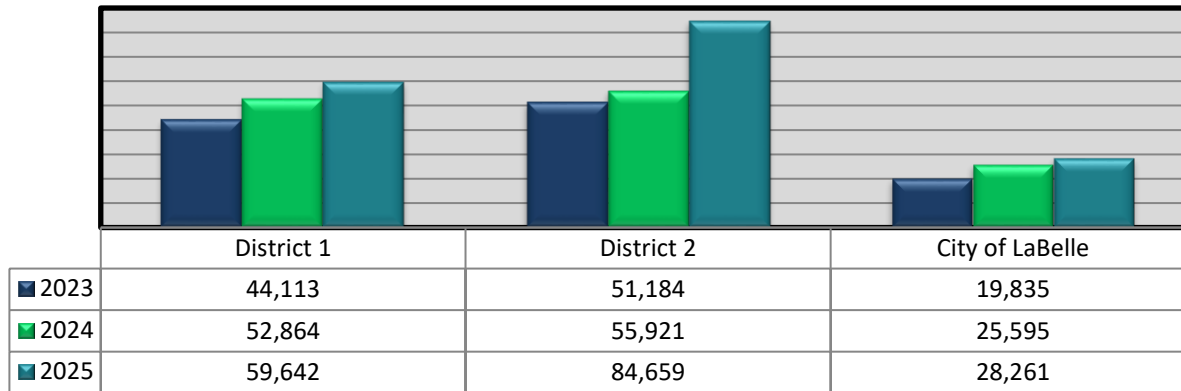
Property Crimes	Nov.	Oct.	Sept.	Aug.
Stolen Vehicle	0	0	2	1
Theft				
- Construction	0	0	0	0
- Residential	2	1	2	1
- Retail	0	1	0	0
Burglary				
- Residential	0	0	1	0
- Business	0	1	0	0
- Vehicle	1	2	1	2
Criminal Mischief	1	0	0	0
TOTAL	4	5	6	4

YTD 2025	YTD 2024	YTD 2023
11	16	32
0	2	0
20	50	71
7	23	30
5	11	11
3	5	4
8	24	27
17	25	26
71	156	201

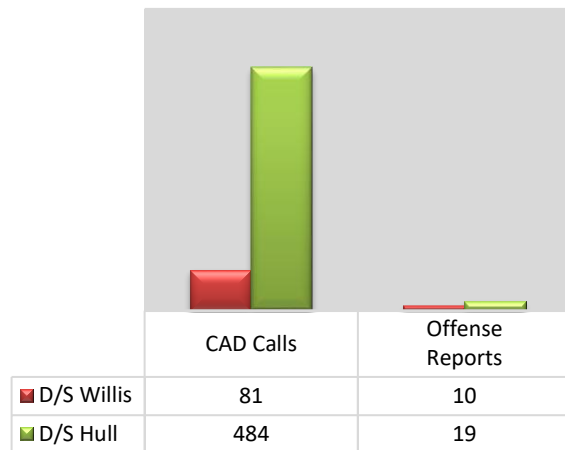


54.5% Decrease in Property Crimes

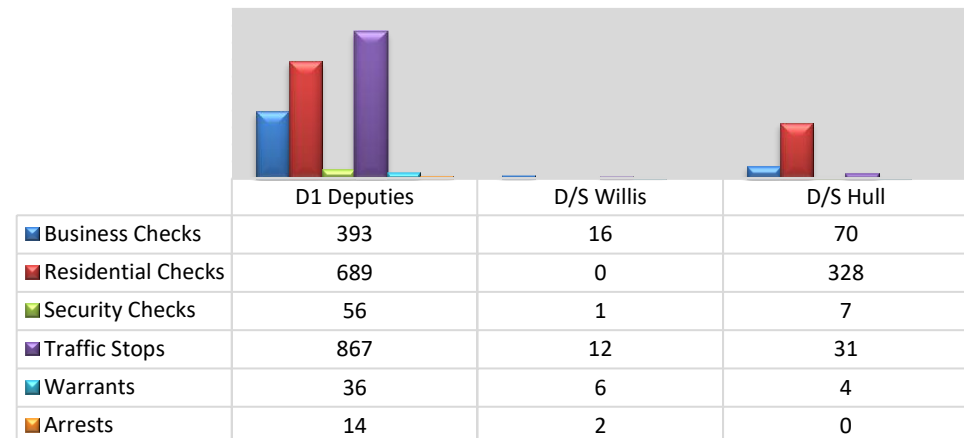
Year-to-Date Call Summary, by District



City Units



City of LaBelle





LABELLE FIRE DEPARTMENT

CHIEF BRENT R. STEVENS

863-675-1537
bstevens@citylabelle.com
jhubbard@citylabelle.com
280 S Main St LaBelle, FL 33935

Agenda Items

LaBelle Fire Department Response:

- November Calls- 53
- Public Relation Events-2

Engine Status

- All Engines are in working order.

Truck Repairs

- All trucks are in working order.

County Response

- LaBelle Fire Department has responded 77 times for mutual aid to outlining areas.

Station & Ladder

- Station design is underway.
- Awaiting arrival of the ladder truck.

Thank You,

Chief Brent Stevens
LaBelle Fire Department
863-234-8639

Range: First to Last Issue Date Range: 11/01/25 to 11/30/25 **Indicates payment is in batch
NOTE: Too many Building Codes included in this report. The totals are correct, but please print to Excel to see the complete detail.

	Alteration Cost	New Volume	BP D2Y BUILDING MECHANICAL PLAN REVIEW	BP D2Z CONTRACTOR PL ROW PLANNING	TOTAL RSRC ELECTRICAL PL UA LT PLUMBING
Grand Totals:	144,550.45	0	PAID: 0.00	0.00 998.50 100.00 0.00	0.00 0.00 0.00 700.00
			PERMIT COUNT:	0 7 1 0	0 4 0 2

BP SURC2 - Bldg Code Admin & Inspect Brd		BP SURCH - FL Building Commission Surchar	
1. Number of permits issued at the minimum surcharge rate 4 x \$2	\$ 8.00	1. Number of permits issued at the minimum surcharge rate 7 x \$2	\$ 14.00
2. Permit fees collected at other than minimum surcharge	\$ 1,039.80	2. Permit fees collected at other than minimum surcharge	\$ 543.20
3. Surcharge amount due (1.5% of line 2 or line 2 x 1.5)	\$ 15.60	3. Surcharge amount due (1.0% of line 2 or line 2 x 0.010)	\$ 5.43
4. Total of Lines 1 & 3	\$ 23.60	4. Total of Lines 1 & 3	\$ 19.43
5. Less surcharge amount retained (10% of line 4 or line 4 x 0.10)	\$ 2.36	5. Less surcharge amount retained (10% of line 4 or line 4 x 0.10)	\$ 1.94
6. Surcharge amount due (line 4 less line 5)	\$ 21.24	6. Surcharge amount due (line 4 less line 5)	\$ 17.49

*NOTE: This report contains only PAID & WAIVED fees.

Range: PID: First to Last

:

:

:

Range of Codes: BUI to BUI

Range of Batch Ids: First to Last

Range of Reference #s: First to Last

Print Ref Num: N

Payment Type Includes:

Sp Charges: Y

Voucher Agency: Y

Misc: Y

Payment Method Includes:

Cash: Y

Range of Installment Due Dates: First to Last

Print Only Miscellaneous w/Parcel Id: N

Print Only Miscellaneous w/Utility Id: N

Range of Util Accounts: First to Last

Range of Customers: First to Last

Range of Years: First to 2027

Range of Dates: 11/01/25 to 11/30/25

Range of Sections: First to Last

Name to Print: Bill To

Prop Lien: N

Sp Assmnt: Y

Water: Y

Sewer: Y

Garbage: Y

Invoice: Y

Check: Y

Credit: Y

Voucher: N

VT: Y

Sort Miscellaneous Payments by Utility Account: N

		----- Principal -----						
Code	Description	Count	Arrears/Other	Fiscal 2025	Fiscal 2026	Fiscal 2027	Interest	Total
BUI	BUILDING DEPT PYMTS	31	1,233.20	0.00	0.00	0.00	0.00	1,233.20
	Invoice Payments	31	1,233.20	0.00	0.00	0.00	0.00	1,233.20
Payments Total:		31	1,233.20	0.00	0.00	0.00	0.00	1,233.20
Cash O/S Total:		0	0.00	0.00	0.00	0.00	0.00	0.00
NSF Reversals Total:		0	0.00	0.00	0.00	0.00	0.00	0.00
Total:		31	1,233.20	0.00	0.00	0.00	0.00	1,233.20
Total Cash:		0.00						
Total Check:		464.80						
Total Credit:		160.00						
Total V Term:		608.40						

Hugo Vargas
Commissioner

Kevin Holland
Commissioner



Jackie Ratica
Commissioner

Bobbie Spratt
Commissioner

"The City of Oaks"

Julie C. Wilkins
Mayor

Code Enforcement Report

November 2025

11/01/2025 – 11/30/2025

During the month of November, Code Enforcement managed a total number of open cases, with twenty-seven new cases opened and seventeen cases closed. Staff issued 37 courtesy notices, 2 compliance notices, and 6 Notices of Violation/Notices of Hearing (NOV/NOH). A total of ten citizen complaints were received and investigated, and staff completed 101 inspections during the reporting period.

Legal activity included 3 hearings, resulting in 1 Finding of Fact and 6 Notices of Continuance. Additionally, thirteen lien searches were completed during the month.

On the safety front, staff held three meetings with Centex to support system coordination and response planning. Panic button badges are now active and in use by employees, and staff continued monitoring and supporting their implementation across City facilities.

In terms of emergency management, the City continued its preparedness efforts, including the distribution of FEMA training to staff to support ongoing readiness and compliance with federal emergency management standards.

Finally, the City Dock recorded 16 reservations during November, generating a total of \$941.76 in revenue. As with previous months, revenue reflects activity completed within the reporting period, with deposits processed weekly and posted one week behind.

Zane Mungillo
Code Enforcement

K&B Pump & Electrical

Section 6, Item D.

1225 Commerce Drive
 Labelle, Fl. 33935
 Phone 863-675-2265 Fax 863-675-7126

QUOTE:110325
 DATE:11/03/2025

City of LaBelle / Juan / Sal

SALESPERSON	P.O. NUMBER	REQUISITIONER	SHIPPED VIA	F.O.B. POINT	TERMS
					Due on receipt

QUANTITY	DESCRIPTION	UNIT PRICE	TOTAL
	<p>Helms Well #2</p> <p>Troubleshoot Well #2 VFD, power, pump, motor, controls and check valve. Found VFD checked out ok, check valve appears to be working correctly, well head shows signs of vibrating and motor is drawing high amperage. Pump was faulting on over current. Pump appears to be making correct flow rates according to tests performed.</p> <p>Estimate to stop well from flowing, supply and install new SME 150hp, 460 volt, 3 phase SS submersible motor and necessary fittings and fasteners. M&L 1 to 2 weeks</p> <p>Estimate to stop well from flowing, supply and install new Grundfos 150hp, 460 volt, 3 phase SS submersible motor and necessary fittings and fasteners. M&L 3 to 4 weeks</p> <ul style="list-style-type: none"> Exact amount of salt required to remove pump unknown. Condition of motor, pump, coupling and submersible cable are unknown until pump is removed from well. 		<p>\$395.00</p> <p>\$26,750.00 to \$29,520.00</p> <p>\$37,740.00 to \$39,920.00</p>

Approved by:

SUBTOTAL
 SALES TAX
 SHIPPING & HANDLING
 TOTAL DUE

Est.
 \$675.00

Make all checks payable to K&B Pump & Electrical
 If you have any questions concerning this Quote, contact me.
 Thank You, Chuck Holt



**City of LaBelle Board of Commissioners
Agenda Request**

To: Honorable Mayor and City Commission
Prepared By: Fire Chief Brent Stevens
Date of Meeting: 12/11/2025
Date Submitted: 11/25/2025
Title of Agenda Item: Vehicle Purchase
Agenda Location: Consent Agenda Item

Report in brief:

The purchase of command vehicles will replace outdated equipment that has presented a negative financial impact on the Fire Department due to maintenance & repair. Hendry County has approved the purchase. All bids acquired from the Florida's Sheriffs Association Cooraporative Purchasing Program.

Staff Comments: Request Board approval.

Fiscal Impact: 2025 -

Has the request been budgeted? X Yes No

If yes, expected cost and account name. Capital Outlay

If no, amount needed and proposed account:

Recommended Actions: Review and Approve the purchase of vehicles from Hardy Chevrolet.

Bid Award

Section 6, Item E.

Contract: FSA25-VEL33.0, Pursuit, Administrative, and Other Vehicles

Group: Utility & Hybrid Utility Vehicles – 4x4 and AWD

Item: 287, Chevrolet, Tahoe 4x4 1FL 21, CK10706

Zone	Rank	Vendor	Price	Build File	Options File
Western	Primary	HARDY CHEVROLET GMC, INC	\$58,878.00	Build	Options
	Alternate	Garber Chevrolet Buick GMC, Inc.	\$59,156.00	Build	Options
	Alternate	Stingray Chevrolet	\$59,800.00	Build	Options
Northern	Primary	HARDY CHEVROLET GMC, INC	\$58,878.00	Build	Options
	Alternate	Garber Chevrolet Buick GMC, Inc.	\$58,956.00	Build	Options
	Alternate	Stingray Chevrolet	\$59,500.00	Build	Options
Central	Primary	HARDY CHEVROLET GMC, INC	\$58,878.00	Build	Options
	Alternate	Stingray Chevrolet	\$58,900.00	Build	Options
	Alternate	Garber Chevrolet Buick GMC, Inc.	\$59,056.00	Build	Options
Southern	Primary	HARDY CHEVROLET GMC, INC	\$58,878.00	Build	Options
	Alternate	Stingray Chevrolet	\$59,000.00	Build	Options
	Alternate	Garber Chevrolet Buick GMC, Inc.	\$59,156.00	Build	Options




Specification #	201
Unit Description	CHEVY TAHOE 4X4 PPV CK10706/9C1

Prepared for: Prepared by:

11/24/2025
LABELLE FIRE DEPARTMENT
ATTN: JENNIFER HUBBARD
JHUBBARD@CITYLABELLE.COM
863.458.6953

Garber Chevrolet GMC Inc.
 Todd Brandt
 (904) 264-2442 ext.2348 FAX: (904) 284-0054
 3340 Hwy 17 Green Cove Springs, FL 32043
tbrandt@garberautomall.com

ORDER



Florida Sheriffs Association

Prices are published by the Florida Sheriffs Association (www.flsheriffs.org) Purchasing contract number is FSA25-VEL33.0 Pursuit, Administrative & Other Vehicles, expiring September 30th, 2026. If you have any questions regarding this quote please call!

				SOUTHERN ZONE
CK10706	2025 Chevrolet Tahoe 4X4 PPV, CK10706/9C1			\$55,856.00
Codes	Optional Equipment	Unit Price		Net Price
1FL	Commercial Preferred Equipment Group	Included	0.0	\$0.00
9C1	Identifier for Police Package Vehicle	Included	0.0	\$0.00
L84	Engine, 5.3L EcoTec3 V8	Included	0.0	\$0.00
MHU	Transmission, 10-speed automatic	Included	0.0	\$0.00
GBA	BLACK PAINT	Included	0.0	\$0.00
H1T/A50	Jet Black, Cloth Bucket seat trim w//floor console	350	7.0	\$343.00
AMF	Remote Keyless Entry Package includes 4 additional transmitters	Included	0.0	\$0.00
6J7	Flasher system, headlamp and taillamp	N/C	0.0	\$0.00
NZV	Wheels, 20" x 9" (50.8 cm x 22.9 cm) machined aluminum w/charcoal pockets	350	7.0	\$343.00
5J0	Calibration, Front (only) Park Assist Disable	N/C	0.0	\$0.00
5J1	Calibration, keyless remote panic button and exterior lights/horn disable	N/C	0.0	\$0.00
5T5	Seats, front cloth and second row vinyl	N/C	0.0	\$0.00
5Y1	Front center seat (20% seat) delete	N/C	0.0	\$0.00
(7x3)	DELETE Left-Hand Spotlight	-200	0.0	(\$200.00)
INST	Program (4) Additional Factory Key Fobs	125	0.0	\$125.00
	NON OEM OPTIONS:			
TTAG/DEL	TEMP TAG AND DELIVERY	6		\$6.00
TOTAL PURCHASE AMOUNT PER VEHICLE				\$ 56,473.00



Specification #	201
Unit Description	CHEVY TAHOE 4X4 PPV CK10706/9C1

Prepared for:

Prepared by:

11/24/2025

LABELLE FIRE DEPARTMENT

ATTN: JENNIFER HUBBARD

JHUBBARD@CITYLABELLE.COM

863.458.6953

Garber Chevrolet GMC Inc.

Todd Brandt

(904) 264-2442 ext.2348 FAX: (904) 284-0054

3340 Hwy 17 Green Cove Springs, FL 32043

tbrandt@garberautomall.com

ORDER



Florida Sheriffs Association

Prices are published by the Florida Sheriffs Association (www.flsheriffs.org) Purchasing contract number is FSA25-VEL33.0 Pursuit, Administrative & Other Vehicles, expiring September 30th, 2026. If you have any questions regarding this quote please call!

SOUTHERN ZONE

CK10706

2025 Chevrolet Tahoe 4X4 PPV, CK10706/9C1

\$55,856.00

Codes	Optional Equipment	Unit Price		Net Price
1FL	Commercial Preferred Equipment Group	Included	0.0	\$0.00
9C1	Identifier for Police Package Vehicle	Included	0.0	\$0.00
L84	Engine, 5.3L EcoTec3 V8	Included	0.0	\$0.00
MHU	Transmission, 10-speed automatic	Included	0.0	\$0.00
GBA	BLACK PAINT	Included	0.0	\$0.00
H1T	Jet Black, Cloth Bucket seat trim	Included	0.0	\$0.00
AMF	Remote Keyless Entry Package includes 4 additional transmitters	Included	0.0	\$0.00
6J7	Flasher system, headlamp and taillamp	N/C	0.0	\$0.00
NZV	Wheels, 20" x 9" (50.8 cm x 22.9 cm) machined aluminum w/charcoal pockets	350	7.0	\$343.00
5J0	Calibration, Front (only) Park Assist Disable	N/C	0.0	\$0.00
5J1	Calibration, keyless remote panic button and exterior lights/horn disable	N/C	0.0	\$0.00
5T5	Seats, front cloth and second row vinyl	N/C	0.0	\$0.00
5Y1	Front center seat (20% seat) delete	N/C	0.0	\$0.00
(7x3)	DELETE Left-Hand Spotlight	-200	0.0	(\$200.00)
INST	Program (4) Additional Factory Key Fobs	125	0.0	\$125.00
NON OEM OPTIONS:				
CONSOLE	VEHICLE SPECIFIC CONSOLE W/ARM REST AND CUPHOLDERS	795	1HR	\$795.00
LABOR	1HR LABOR FOR EVT CERTIFIED INSTALLATION OF POLICE EQUIPMENT	125		\$125.00
TTAG/DEL	TEMP TAG AND DELIVERY	6		\$6.00

TOTAL PURCHASE AMOUNT PER VEHICLE

\$ 57,050.00

X2

TOTAL

\$114,100



Vehicle: [Fleet] 2026 Chevrolet Tahoe (CK10706) 4WD 4dr Commercial



Quote Worksheet

	MSRP
Base Price	\$57,200.00
Dest Charge	\$2,595.00
Total Options	\$1,850.00
Subtotal	\$61,645.00
FSA ADJUSTMENT FSA25-VEL33.0	(\$4,700.00)
Subtotal Pre-Tax Adjustments	(\$4,700.00)
Less Customer Discount	\$0.00
Subtotal Discount	\$0.00
Trade-In	\$0.00
Subtotal Trade-In	\$0.00
Taxable Price	\$56,945.00
Sales Tax	\$0.00
Subtotal Taxes	\$0.00
Subtotal Post-Tax Adjustments	\$0.00
Total Sales Price	\$56,945.00



Hardy Chevrolet Buick GMC Inc

Desmond Delesline | 6787803034 | ddelesline@hardyautomotive.com

Section 6, Item E.

Vehicle: [Fleet] 2026 Chevrolet Tahoe (CK10706) 4WD 4dr Commercial (✔ Complete)

Dealer Signature / Date

Customer Signature / Date

Selected Model and Options

MODEL		
CODE	MODEL	MSRP
CK10706	2026 Chevrolet Tahoe 4WD 4dr Commercial	\$57,200.00

COLORS	
CODE	DESCRIPTION
GBA	Black

SUSPENSION PKG				
CODE	DESCRIPTION	FRONT WEIGHT	REAR WEIGHT	MSRP
Z56	Suspension Package, heavy-duty, police-rated. Full independent suspension with monotube dampers, linear coil springs, 35mm solid front stabilizer bar and 32mm hollow rear stabilizer bar (Included and only available with (9C1) Police Vehicle.)	0.00 lbs	0.00 lbs	Inc.

EMISSIONS				
CODE	DESCRIPTION	FRONT WEIGHT	REAR WEIGHT	MSRP
FE9	Emissions, Federal requirements	0.00 lbs	0.00 lbs	\$0.00

ENGINE				
CODE	DESCRIPTION	FRONT WEIGHT	REAR WEIGHT	MSRP
L84	Engine, 5.3L EcoTec3 V8 with Dynamic Fuel Management, Direct Injection and Variable Valve Timing, includes aluminum block construction (355 hp [265 kW] @ 5600 rpm, 383 lb-ft of torque [518 Nm] @ 4100 rpm) (STD)	0.00 lbs	0.00 lbs	\$0.00

This document contains information considered Confidential between GM and its Clients uniquely. The information provided is not intended for public disclosure. Prices, specifications, and availability are subject to change without notice, and do not include certain fees, taxes and charges that may be required by law or vary by manufacturer or region. Performance figures are guidelines only, and actual performance may vary. Photos may not represent actual vehicles or exact configurations. Content based on report preparer's input is subject to the accuracy of the input provided.
Data Version: 27063. Data Updated: Nov 23, 2025 6:45:00 PM PST.



Hardy Chevrolet Buick GMC Inc

Desmond Delesline | 6787803034 | ddelesline@hardyautomotive.com

Section 6, Item E.

Vehicle: [Fleet] 2026 Chevrolet Tahoe (CK10706) 4WD 4dr Commercial (Complete)

TRANSMISSION				
CODE	DESCRIPTION	FRONT WEIGHT	REAR WEIGHT	MSRP
MHU	Transmission, 10-speed automatic electronically controlled with overdrive, includes Traction Select System including tow/haul (Included and only available with (9C1) Police Vehicle or (5W4) Special Service Vehicle.)	0.00 lbs	0.00 lbs	Inc.

GVWR				
CODE	DESCRIPTION	FRONT WEIGHT	REAR WEIGHT	MSRP
C6G	GVWR, 7600 lbs. (3447 kg) (4WD models only.) (STD)	0.00 lbs	0.00 lbs	\$0.00

AXLE				
CODE	DESCRIPTION	FRONT WEIGHT	REAR WEIGHT	MSRP
GU5	Rear axle, 3.23 ratio	0.00 lbs	0.00 lbs	\$0.00

PREFERRED EQUIPMENT GROUP				
CODE	DESCRIPTION	FRONT WEIGHT	REAR WEIGHT	MSRP
1FL	Commercial Preferred Equipment Group includes standard equipment	0.00 lbs	0.00 lbs	\$0.00

WHEEL TYPE				
CODE	DESCRIPTION	FRONT WEIGHT	REAR WEIGHT	MSRP
NZV	Wheels, 20" x 9" (50.8 cm x 22.9 cm) machined aluminum with Charcoal pockets (Includes (XC1) 275/60R20SL all-season, blackwall tires unless (QAE) 275/60R20SL all-terrain, blackwall tires are ordered.)	0.00 lbs	0.00 lbs	\$350.00

TIRES				
CODE	DESCRIPTION	FRONT WEIGHT	REAR WEIGHT	MSRP
XCS	Tires, 275/55R20SL all-season, blackwall, Firestone Firehawk Pursuit (Included and only available with (9C1) Police Vehicle.)	0.00 lbs	0.00 lbs	Inc.

This document contains information considered Confidential between GM and its Clients uniquely. The information provided is not intended for public disclosure. Prices, specifications, and availability are subject to change without notice, and do not include certain fees, taxes and charges that may be required by law or vary by manufacturer or region. Performance figures are guidelines only, and actual performance may vary. Photos may not represent actual vehicles or exact configurations. Content based on report preparer's input is subject to the accuracy of the input provided.
Data Version: 27063. Data Updated: Nov 23, 2025 6:45:00 PM PST.



Hardy Chevrolet Buick GMC Inc

Desmond Delesline | 6787803034 | ddelesline@hardyautomotive.com

Section 6, Item E.

Vehicle: [Fleet] 2026 Chevrolet Tahoe (CK10706) 4WD 4dr Commercial (✔ Complete)

PAINT				
CODE	DESCRIPTION	FRONT WEIGHT	REAR WEIGHT	MSRP
GBA	Black	0.00 lbs	0.00 lbs	\$0.00

SEAT TYPE				
CODE	DESCRIPTION	FRONT WEIGHT	REAR WEIGHT	MSRP
A50	Seats, front bucket (4WD only. Requires (9C1) Police Vehicle, (PQA) 1FL Safety Package and (UDA) OnStar deactivated. Includes (D07) floor console. Not available with SEO (5Y1) front center seat delete or SEO (5T5) front cloth and second row vinyl seats.)	0.00 lbs	0.00 lbs	\$350.00

SEAT TRIM				
CODE	DESCRIPTION	FRONT WEIGHT	REAR WEIGHT	MSRP
H1T	Jet Black, Cloth seat trim (Requires (9C1) Police Vehicle or (5W4) Special Service Vehicle.)	0.00 lbs	0.00 lbs	\$0.00

RADIO				
CODE	DESCRIPTION	FRONT WEIGHT	REAR WEIGHT	MSRP
URW	Audio system, 17.7" diagonal advanced color LCD display with Google built-in compatibility (select service plan required, terms and limitations apply), including navigation capability, connected apps, personalized profiles for each driver's settings, Natural Voice Recognition and Phone Integration (STD)	0.00 lbs	0.00 lbs	\$0.00

This document contains information considered Confidential between GM and its Clients uniquely. The information provided is not intended for public disclosure. Prices, specifications, and availability are subject to change without notice, and do not include certain fees, taxes and charges that may be required by law or vary by manufacturer or region. Performance figures are guidelines only, and actual performance may vary. Photos may not represent actual vehicles or exact configurations. Content based on report preparer's input is subject to the accuracy of the input provided.

Data Version: 27063. Data Updated: Nov 23, 2025 6:45:00 PM PST.



Hardy Chevrolet Buick GMC Inc

Desmond Delesline | 6787803034 | ddelesline@hardyautomotive.com

Section 6, Item E.

Vehicle: [Fleet] 2026 Chevrolet Tahoe (CK10706) 4WD 4dr Commercial (Complete)

ADDITIONAL EQUIPMENT - PACKAGE				
CODE	DESCRIPTION	FRONT WEIGHT	REAR WEIGHT	MSRP
9C1	Identifier for Police Package Vehicle includes, (K47) heavy-duty air filter, (KX4) 250 amp high output alternator, (K6K) 760 cold-cranking amps auxiliary battery, electrical power & vehicle signals for customer connection located at the center front floor. Auxiliary battery circuit for customer connection located in the rear cargo area, (Z56) heavy-duty, police-rated suspension, (XCS) 275/55R20SL all-season tires, (RAV) 275/55R20 all-season spare tire, Police brakes, (RC1) front skid plate, (PXT) 20" steel wheels, Certified speedometer, SEO (5J3) Surveillance Mode interior lighting calibration, SEO (UT7) blunt cut cargo area and blunt cut console area ground wires, (V53) delete luggage rack side rails and (ATD) third row seat delete) (Also includes (NP0) active single-speed transfer case.) *Upon selection of this option the base price will change*	0.00 lbs	0.00 lbs	\$0.00
AMF	Remote Keyless Entry Package includes 4 additional transmitters, NOTE: programming of remotes is at customer's expense. Programming remotes is not a warranty expense (Included and only available with (9C1) Police Vehicle or (5W4) Special Service Vehicle.)	0.00 lbs	0.00 lbs	Inc.
PQA	1FL Safety Package includes (UEU) Forward Collision Alert, (UKM) Enhanced Lane Keep Assist with Lane Departure Warning, (UKI) Blind Zone Steering Assist, (UHY) Automatic Emergency Braking, (UFB) Rear Cross Traffic Braking, (UKT) Front Pedestrian and Bicyclist Braking, (CTB) Intersection Automatic Emergency Braking, (UOW) Side Bicyclist Alert, (DRZ) Rear Camera Mirror and (TQ5) IntelliBeam headlamps (Requires (9C1) Police Vehicle or (5W4) Special Service Vehicle.)	0.00 lbs	0.00 lbs	\$825.00

This document contains information considered Confidential between GM and its Clients uniquely. The information provided is not intended for public disclosure. Prices, specifications, and availability are subject to change without notice, and do not include certain fees, taxes and charges that may be required by law or vary by manufacturer or region. Performance figures are guidelines only, and actual performance may vary. Photos may not represent actual vehicles or exact configurations. Content based on report preparer's input is subject to the accuracy of the input provided.
Data Version: 27063. Data Updated: Nov 23, 2025 6:45:00 PM PST.



Hardy Chevrolet Buick GMC Inc

Desmond Delesline | 6787803034 | ddelesline@hardyautomotive.com

Section 6, Item E.

Vehicle: [Fleet] 2026 Chevrolet Tahoe (CK10706) 4WD 4dr Commercial (Complete)

ADDITIONAL EQUIPMENT - MECHANICAL				
CODE	DESCRIPTION	FRONT WEIGHT	REAR WEIGHT	MSRP
5J9	Calibration, taillamp flasher, Red/White (Included and only available with (9C1) Police Vehicle or (5W4) Special Service Vehicle.)	0.00 lbs	0.00 lbs	Inc.
5LO	Calibration, taillamp flasher, Red/Red (Included and only available with (9C1) Police Vehicle or (5W4) Special Service Vehicle.)	0.00 lbs	0.00 lbs	Inc.
6J7	Flasher system, headlamp and taillamp, DRL compatible with control wire (Included and only available with (9C1) Police Vehicle or (5W4) Special Service Vehicle.)	0.00 lbs	0.00 lbs	Inc.
—	Capless Fuel Fill (Included and only available with (9C1) Police Vehicle or (5W4) Special Service Vehicle.)	0.00 lbs	0.00 lbs	Inc.
J55	Brake system, heavy duty with front Brembo calipers and 16" front rotors (Included and only available with (9C1) Police Package.)	0.00 lbs	0.00 lbs	Inc.
K3W	Battery, 900 cold-cranking amps with 95 amp hour rating (Included and only available with (9C1) Police Vehicle or (5W4) Special Service Vehicle.)	0.00 lbs	0.00 lbs	Inc.
K6K	Battery, auxiliary, 760 cold-cranking amps with 70 amp hour rating (packaged behind left rear cargo area panel) (Included and only available with (9C1) Police Vehicle or (5W4) Special Service Vehicle.)	0.00 lbs	0.00 lbs	Inc.
KX4	Alternator, 250 amps (Included and only available with (9C1) Police Vehicle or (5W4) Special Service Vehicle.)	0.00 lbs	0.00 lbs	Inc.
RC1	Skid plate, front (Included and only available with (9C1) Police Vehicle or (5W4) Special Service Vehicle.)	0.00 lbs	0.00 lbs	Inc.
T66	Wiring provision, for outside mirrors and cargo side mirrors (Included and only available with (9C1) Police Vehicle or (5W4) Special Service Vehicle.)	0.00 lbs	0.00 lbs	Inc.
UT7	Ground wires, blunt cut cargo area and blunt cut console area (Included and only available with (9C1) Police Vehicle or (5W4) Special Service Vehicle.)	0.00 lbs	0.00 lbs	Inc.
V03	Cooling system, extra capacity (Included and only available with (9C1) Police Vehicle.)	0.00 lbs	0.00 lbs	Inc.
V76	Recovery hooks, 2 front, frame-mounted, Black (Requires (9C1) Police Vehicle or (5W4) Special Service Vehicle. Required on all models going to Alaska, Guam, Hawaii, Puerto Rico and Virgin Islands. All Tahoe (9C1) and (5W4) vehicles include front fascia with recovery hook openings.)	0.00 lbs	0.00 lbs	Inc.

This document contains information considered Confidential between GM and its Clients uniquely. The information provided is not intended for public disclosure. Prices, specifications, and availability are subject to change without notice, and do not include certain fees, taxes and charges that may be required by law or vary by manufacturer or region. Performance figures are guidelines only, and actual performance may vary. Photos may not represent actual vehicles or exact configurations. Content based on report preparer's input is subject to the accuracy of the input provided.
Data Version: 27063. Data Updated: Nov 23, 2025 6:45:00 PM PST.



Hardy Chevrolet Buick GMC Inc

Desmond Delesline | 6787803034 | ddelesline@hardyautomotive.com

Section 6, Item E.

Vehicle: [Fleet] 2026 Chevrolet Tahoe (CK10706) 4WD 4dr Commercial (Complete)

ADDITIONAL EQUIPMENT - EXTERIOR

CODE	DESCRIPTION	FRONT WEIGHT	REAR WEIGHT	MSRP
—	Exterior ornamentation delete (front & rear Chevrolet bowties will remain) (Included and only available with (9C1) Police Vehicle or (5W4) Special Service Vehicle.)	0.00 lbs	0.00 lbs	Inc.
RAV	Tire, spare 275/55R20 all-season, blackwall, Firestone Firehawk Pursuit (Included and only available with (9C1) Police Vehicle.)	0.00 lbs	0.00 lbs	Inc.
RNQ	Wheel, full-size spare, matching 20" (50.8 cm) steel wheel without center cap (Included and only available with (9C1) Police Vehicle.)	0.00 lbs	0.00 lbs	Inc.
TQ5	IntelliBeam, automatic high beam on/off (Standard on Commercial Models. When ordered with (9C1) Police Vehicle or (5W4) Special Service Vehicle, included and only available with (PQA) 1FL Safety Package.)	0.00 lbs	0.00 lbs	Inc.
V53	Luggage rack side rails, delete (Included and only available with (9C1) Police Vehicle or (5W4) Special Service Package.)	0.00 lbs	0.00 lbs	Inc.
WUA	Fascia, front high-approach angle with recovery hook openings, but does not include hooks (Included and only available with (9C1) Police Vehicle or (5W4) Special Service Vehicle.)	0.00 lbs	0.00 lbs	Inc.

ADDITIONAL EQUIPMENT - ENTERTAINMENT

CODE	DESCRIPTION	FRONT WEIGHT	REAR WEIGHT	MSRP
UDA	OnStar deactivated (does not delete Bluetooth) (4WD only. Requires (9C1) Police Vehicle, (PQA) 1FL Safety Package, and (A50) front bucket seats.	0.00 lbs	0.00 lbs	\$50.00

This document contains information considered Confidential between GM and its Clients uniquely. The information provided is not intended for public disclosure. Prices, specifications, and availability are subject to change without notice, and do not include certain fees, taxes and charges that may be required by law or vary by manufacturer or region. Performance figures are guidelines only, and actual performance may vary. Photos may not represent actual vehicles or exact configurations. Content based on report preparer's input is subject to the accuracy of the input provided.
Data Version: 27063. Data Updated: Nov 23, 2025 6:45:00 PM PST.



Hardy Chevrolet Buick GMC Inc

Desmond Delesline | 6787803034 | ddelesline@hardyautomotive.com

Section 6, Item E.

Vehicle: [Fleet] 2026 Chevrolet Tahoe (CK10706) 4WD 4dr Commercial (Complete)

ADDITIONAL EQUIPMENT - INTERIOR				
CODE	DESCRIPTION	FRONT WEIGHT	REAR WEIGHT	MSRP
5J3	Calibration, Surveillance Mode interior lighting (Included and only available with (9C1) Police Vehicle or (5W4) Special Service Vehicle.)	0.00 lbs	0.00 lbs	Inc.
—	Instrumentation, analog with certified 140 mph speedometer, odometer with trip odometer, engine hour meter, fuel level, voltmeter, engine temperature, oil pressure and tachometer (Included and only available with (9C1) Police Vehicle or (5W4) Special Service Vehicle.)	0.00 lbs	0.00 lbs	Inc.
—	Power supply, 100-amp, auxiliary battery, rear electrical center (Included and only available with (9C1) Police Vehicle or (5W4) Special Service Vehicle.)	0.00 lbs	0.00 lbs	Inc.
—	Power supply, 120-amp, (4) 30-amp circuit, Primary battery, relay controlled, passenger compartment harness wiring (Included and only available with (9C1) Police Vehicle or (5W4) Special Service Vehicle.)	0.00 lbs	0.00 lbs	Inc.
—	Power supply, 50-amp, power supply, auxiliary battery, passenger compartment wiring harness (Included and only available with (9C1) Police Vehicle or (5W4) Special Service Vehicle.)	0.00 lbs	0.00 lbs	Inc.
—	Theft-deterrent system, vehicle, PASS-Key III (Included and only available with (9C1) Police Vehicle or (5W4) Special Service Vehicle.)	0.00 lbs	0.00 lbs	Inc.
ATD	Seat delete, third row passenger	0.00 lbs	0.00 lbs	Inc.
AX2	Key, unique Included and only available with (9C1) Police Vehicle or (5W4) Special Service Vehicle.)	0.00 lbs	0.00 lbs	Inc.
B30	Floor covering, color-keyed carpeting in occupant area. When ordered with (9C1) Police Package or (5W4) Special Service Package, Horizontal surface of cargo area covered in black vinyl.	0.00 lbs	0.00 lbs	\$195.00
B58	Floor mats, color-keyed carpeted first and second row, removable (Requires and only available with (B30) color-keyed carpeting floor covering. Not available with any LPO floor mats or LPO floor liners.)	0.00 lbs	0.00 lbs	\$80.00
BCV	Lock control, driver side auto door lock disable (Included and only available with (9C1) Police Vehicle or (5W4) Special Service Vehicle.)	0.00 lbs	0.00 lbs	Inc.
BTV	Remote start (Included and only available with (9C1) Police Vehicle or (5W4) Special Service Vehicle.)	0.00 lbs	0.00 lbs	Inc.
D07	Console, floor with storage area and removable storage tray (Requires (9C1) Police Vehicle. Included and only available with (A50) front bucket seats.)	0.00 lbs	0.00 lbs	Inc.

This document contains information considered Confidential between GM and its Clients uniquely. The information provided is not intended for public disclosure. Prices, specifications, and availability are subject to change without notice, and do not include certain fees, taxes and charges that may be required by law or vary by manufacturer or region. Performance figures are guidelines only, and actual performance may vary. Photos may not represent actual vehicles or exact configurations. Content based on report preparer's input is subject to the accuracy of the input provided.
Data Version: 27063. Data Updated: Nov 23, 2025 6:45:00 PM PST.



Hardy Chevrolet Buick GMC Inc

Desmond Delesline | 6787803034 | ddelesline@hardyautomotive.com

Section 6, Item E.

Vehicle: [Fleet] 2026 Chevrolet Tahoe (CK10706) 4WD 4dr Commercial (Complete)

DRZ	Rear Camera Mirror, inside rearview auto-dimming with full camera display (Requires (9C1) Police Package or (5W4) Special Service Package. Included with (PQA) 1FL Safety Package. When (PQA) 1FL Safety Package is not ordered, requires (UE1) OnStar and (AZ3) 40/20/40 split-bench seat.)	0.00 lbs	0.00 lbs	Inc.
K34	Cruise control, electronic with set and resume speed (Included and only available with (9C1) Police Vehicle or (5W4) Special Service Vehicle.)	0.00 lbs	0.00 lbs	Inc.
UBC	USB ports, 2 type-A and C, charge and data located inside center console (Requires (9C1) Police Vehicle. Included and only available with (A50) front bucket seats.)	0.00 lbs	0.00 lbs	Inc.
UUA	Display, automatic occupant sensing (Included and only available with (9C1) Police Vehicle or (5W4) Special Service Vehicle.)	0.00 lbs	0.00 lbs	Inc.
VZ2	Speedometer calibration (Included and only available with (9C1) Police Vehicle or (5W4) Special Service Vehicle.)	0.00 lbs	0.00 lbs	Inc.

ADDITIONAL EQUIPMENT - SAFETY-MECHANICAL				
CODE	DESCRIPTION	FRONT WEIGHT	REAR WEIGHT	MSRP
CTB	Intersection Automatic Emergency Braking intersection alert, braking (Standard on Commercial models except when (9C1) Police Package is ordered. Included with (PQA) 1FL Safety Package.)	0.00 lbs	0.00 lbs	Inc.
UHY	Automatic Emergency Braking (Requires (9C1) Police Package or (5W4) Special Service Package. Included with (PQA) 1FL Safety Package.)	0.00 lbs	0.00 lbs	Inc.
UKT	Front Pedestrian and Bicyclist Braking (Standard on Commercial models except when (9C1) Police Package is ordered. Included with (PQA) 1FL Safety Package.)	0.00 lbs	0.00 lbs	Inc.

This document contains information considered Confidential between GM and its Clients uniquely. The information provided is not intended for public disclosure. Prices, specifications, and availability are subject to change without notice, and do not include certain fees, taxes and charges that may be required by law or vary by manufacturer or region. Performance figures are guidelines only, and actual performance may vary. Photos may not represent actual vehicles or exact configurations. Content based on report preparer's input is subject to the accuracy of the input provided.
Data Version: 27063. Data Updated: Nov 23, 2025 6:45:00 PM PST.



Hardy Chevrolet Buick GMC Inc

Desmond Delesline | 6787803034 | ddelesline@hardyautomotive.com

Section 6, Item E.

Vehicle: [Fleet] 2026 Chevrolet Tahoe (CK10706) 4WD 4dr Commercial (Complete)

ADDITIONAL EQUIPMENT - SAFETY-INTERIOR

CODE	DESCRIPTION	FRONT WEIGHT	REAR WEIGHT	MSRP
—	Active Hill Hold Assist (Included and only available with (9C1) Police Vehicle or (5W4) Special Service Vehicle.)	0.00 lbs	0.00 lbs	Inc.
—	Seat belts, 3-point, all seating positions (Included and only available with (9C1) Police Vehicle or (5W4) Special Service Vehicle.)	0.00 lbs	0.00 lbs	Inc.
UD7	Rear Parking Assist (Included and only available with (9C1) Police Vehicle and (5W4) Special Service Vehicle.)	0.00 lbs	0.00 lbs	Inc.
UEU	Forward Collision Alert (Standard on Commercial models except when (9C1) Police Package is ordered. Included with (PQA) 1FL Safety Package.)	0.00 lbs	0.00 lbs	Inc.
UFB	Rear Cross Traffic Braking (Standard on Commercial models except when (9C1) Police Package is ordered. Included with (PQA) 1FL Safety Package.)	0.00 lbs	0.00 lbs	Inc.
UKI	Blind Zone Steering Assist (Included and only available with (PQA) 1FL Safety Package.)	0.00 lbs	0.00 lbs	Inc.
UKM	Lane Keep Assist with Lane Departure Warning, enhanced (Included and only available with (PQA) 1FL Safety Package.)	0.00 lbs	0.00 lbs	Inc.
UOW	Side Bicyclist Alert (Standard on Commercial models except when (9C1) Police Package is ordered. Included with (PQA) 1FL Safety Package.)	0.00 lbs	0.00 lbs	Inc.

ADDITIONAL EQUIPMENT - OTHER

CODE	DESCRIPTION	FRONT WEIGHT	REAR WEIGHT	MSRP
—	Protected idle allows vehicle engine to remain idling and vehicle immobilized while FOB is outside vehicle (Included and only available (9C1) Police Vehicle or (5W4) Special Service Vehicle.)	0.00 lbs	0.00 lbs	Inc.
Options Total		0.00 lbs	0.00 lbs	\$1,850.00

Standard Equipment

Mechanical

Engine, 5.3L EcoTec3 V8 with Dynamic Fuel Management, Direct Injection and Variable Valve Timing, includes aluminum block construction (355 hp [265 kW] @ 5600 rpm, 383 lb-ft of torque [518 Nm] @ 4100 rpm) (STD)
Transmission, 10-speed automatic electronically controlled with overdrive, includes Traction Select System including tow/haul (STD)
Rear axle, 3.23 ratio

This document contains information considered Confidential between GM and its Clients uniquely. The information provided is not intended for public disclosure. Prices, specifications, and availability are subject to change without notice, and do not include certain fees, taxes and charges that may be required by law or vary by manufacturer or region. Performance figures are guidelines only, and actual performance may vary. Photos may not represent actual vehicles or exact configurations. Content based on report preparer's input is subject to the accuracy of the input provided.
Data Version: 27063. Data Updated: Nov 23, 2025 6:45:00 PM PST.



Hardy Chevrolet Buick GMC Inc

Desmond Delesline | 6787803034 | ddelesline@hardyautomotive.com

Section 6, Item E.

Vehicle: [Fleet] 2026 Chevrolet Tahoe (CK10706) 4WD 4dr Commercial (Complete)

Mechanical

Suspension, Premium Smooth Ride (STD)
GVWR, 7600 lbs. (3447 kg) (4WD models only.) (STD)
Keyless start, push button
Automatic Stop/Start (Not available with (9C1) Police Vehicle or (5W4) Special Service Vehicle.)
Engine control, stop/start system disable button, non-latching
Engine air filtration monitor
Fuel, gasoline, E15
Transfer case, active, single-speed, electronic Autotrac does not include neutral. Cannot be dinghy towed
Differential, mechanical limited-slip
4-wheel drive
Air filter, heavy-duty
Cooling, external engine oil cooler, heavy-duty air-to-oil integral to driver side of radiator
Cooling, auxiliary transmission oil cooler, heavy-duty air-to-oil
Battery, 730 cold-cranking amps with 80 amp hour rating (Not available with (9C1) Police Package or (5W4) Special Service Package.)
Alternator, 220 amps (Not available with (9C1) Police Vehicle or (5W4) Special Service Vehicle.)
Trailer equipment includes trailering hitch platform, 7-wire harness with independent fused trailering circuits mated to a 7-way connector and 2" trailering receiver
Trailer sway control (Not available with (9C1) Police Vehicle or (5W4) Special Service Vehicle.)
Hitch Guidance
Suspension, front coil-over-shock with stabilizer bar (Not available with (9C1) Police Vehicle or (5W4) Special Service Vehicle.)
Suspension, rear multi-link with coil springs (Not available with (9C1) Police Vehicle or (5W4) Special Service Vehicle.)
Steering, power
Brakes, 4-wheel antilock, 4-wheel disc with DURALIFE rotors (Not available with (9C1) Police Vehicle.)
Exhaust, single system, single-outlet
Mechanical Jack with tools

Exterior

Wheels, 18" x 8.5" (45.7 cm x 21.6 cm) Bright Silver painted aluminum (STD)
Tires, 265/65R18SL all-season, blackwall (Standard with (RCV) 18" Bright Silver painted aluminum wheels only.) (STD)

This document contains information considered Confidential between GM and its Clients uniquely. The information provided is not intended for public disclosure. Prices, specifications, and availability are subject to change without notice, and do not include certain fees, taxes and charges that may be required by law or vary by manufacturer or region. Performance figures are guidelines only, and actual performance may vary. Photos may not represent actual vehicles or exact configurations. Content based on report preparer's input is subject to the accuracy of the input provided.
Data Version: 27063. Data Updated: Nov 23, 2025 6:45:00 PM PST.



Hardy Chevrolet Buick GMC Inc

Desmond Delesline | 6787803034 | ddelesline@hardyautomotive.com

Section 6, Item E.

Vehicle: [Fleet] 2026 Chevrolet Tahoe (CK10706) 4WD 4dr Commercial (Complete)

Exterior

- Wheel, full-size spare, 17" (43.2 cm) steel (Not available with (9C1) Police Vehicle.)
- Tire, spare P265/70R17 all-season, blackwall (Not available with (9C1) Police Vehicle or (5W4) Special Service Vehicle.)
- Tire carrier, lockable outside spare, winch-type mounted under frame at rear
- Active aero shutters, upper (Not available with (9C1) Police Vehicle or (5W4) Special Service Vehicle.)
- Fascia, front (Not available with (9C1) Police Vehicle or (5W4) Special Service Vehicle.)
- Luggage rack side rails, roof-mounted, Black, standard (Available with (5W4) Special Services Vehicle.)
- Assist steps, Black
- IntelliBeam, automatic high beam on/off (Deleted when (9C1) Police Vehicle is ordered.)
- Headlamps, LED
- Tail lamps, LED
- Mirrors, outside heated power-adjustable, manual-folding, body-color
- Mirror caps, body-color
- Glass, deep-tinted (all windows, except light-tinted glass on windshield and driver- and front passenger-side glass)
- Glass, acoustic, laminated
- Glass, windshield shade band
- Windshield, solar absorbing
- Wipers, front intermittent, Rainsense
- Wiper, rear intermittent with washer
- Door handles, body-color
- Liftgate, rear manual

Entertainment

- Audio system, 17.7" diagonal advanced color LCD display with Google built-in compatibility (select service plan required, terms and limitations apply), including navigation capability, connected apps, personalized profiles for each driver's settings, Natural Voice Recognition and Phone Integration (STD)
- Audio system feature, 6-speaker system
- Bluetooth for phone personal cell phone connectivity to vehicle audio system
- 5G Wi-Fi Hotspot capable (Requires (UE1) OnStar. Terms and limitations apply. See onstar.com or dealer for details.)
- Wi-Fi Hotspot capable (Requires (UE1) OnStar. Terms and limitations apply. See onstar.com or dealer for details.)

This document contains information considered Confidential between GM and its Clients uniquely. The information provided is not intended for public disclosure. Prices, specifications, and availability are subject to change without notice, and do not include certain fees, taxes and charges that may be required by law or vary by manufacturer or region. Performance figures are guidelines only, and actual performance may vary. Photos may not represent actual vehicles or exact configurations. Content based on report preparer's input is subject to the accuracy of the input provided.
Data Version: 27063. Data Updated: Nov 23, 2025 6:45:00 PM PST.



Vehicle: [Fleet] 2026 Chevrolet Tahoe (CK10706) 4WD 4dr Commercial (Complete)

Entertainment

- SiriusXM, delete
- Wireless Apple CarPlay/Wireless Android Auto

Interior

- Seats, front 40/20/40 split-bench (STD)
- Seat trim, cloth
- Seat adjuster, driver 8-way power
- Seat adjuster, front passenger 6-way power
- Seat adjuster, driver 2-way power lumbar
- Seat adjuster, front passenger 2-way power lumbar
- Seats, second row 60/40 split-folding bench, manual
- Seats, third row 60/40 split-folding bench, manual (Not available with (9C1) Police Package or (5W4) Special Service Package.)
- Floor covering, Black rubberized vinyl (Deleted when (B30) floor covering is ordered.)
- Electronic Precision Shift
- Steering column lock, electrical
- Steering column, manual tilt and telescopic
- Steering wheel, vinyl
- Steering wheel controls, mounted audio, Driver Information Center, Adaptive Cruise Control, Forward Collision Alert following gap button and heated steering wheel (when equipped)
- Driver Information Center, 11" diagonal multi-color digital display
- Door locks, power programmable with lockout protection. Auto Lockout is disabled on driver door.
- Keyless Open includes extended range Remote Keyless Entry
- Window, power with driver Express-Up/Down
- Window, power with front passenger Express-Up/Down
- Windows, power with rear Express-Down
- Adaptive Cruise Control (Not available with (9C1) Police Vehicle or (5W4) Special Service Vehicle.)
- Universal Vehicle Module
- Theft-deterrent system, electrical, unauthorized entry
- USB ports, 2 type-A and C, charge and data, located on front console
- USB ports, 2 type-C, charge-only, located in third row

This document contains information considered Confidential between GM and its Clients uniquely. The information provided is not intended for public disclosure. Prices, specifications, and availability are subject to change without notice, and do not include certain fees, taxes and charges that may be required by law or vary by manufacturer or region. Performance figures are guidelines only, and actual performance may vary. Photos may not represent actual vehicles or exact configurations. Content based on report preparer's input is subject to the accuracy of the input provided.
Data Version: 27063. Data Updated: Nov 23, 2025 6:45:00 PM PST.



Hardy Chevrolet Buick GMC Inc

Desmond Delesline | 6787803034 | ddelesline@hardyautomotive.com

Section 6, Item E.

Vehicle: [Fleet] 2026 Chevrolet Tahoe (CK10706) 4WD 4dr Commercial (Complete)

Interior

- Air conditioning, tri-zone automatic climate control with individual climate settings for driver, right front passenger and rear seat occupants
- Air conditioning, rear
- Defogger, rear-window electric
- Power outlets, 2, 120-volt, located on the rear of the center console and rear cargo area (NOTE: When ordered with (9C1) Police Package or (5W4) Special Service Package, the location of the outlets will change from the rear of the center console to the rear of the center seat.)
- Mirror, inside rearview manual day/night
- Visors, driver and front passenger illuminated vanity mirrors, sliding
- Assist handles, overhead, driver and front passenger, located in headliner
- Assist handles, front passenger A-pillar and second row outboard B-pillar
- Lighting, interior with dome light, driver- and passenger-side door switch with delayed entry feature, cargo lights, door handle or Remote Keyless Entry-activated illuminated entry and map lights in front and second seat positions
- Cargo management system (Not available with (9C1) Police Vehicle or (5W4) Special Service Vehicle.)
- Chevrolet Connected Access capable (Subject to terms. See onstar.com or dealer for details.) (Not available with (9C1) Police Vehicle or (5W4) Special Service Vehicle.)

Safety-Mechanical

- Front Pedestrian and Bicyclist Braking (Deleted when (9C1) Police Vehicle is ordered.)
- Intersection Automatic Emergency Braking intersection alert, braking (Deleted when (9C1) Police Vehicle is ordered.)
- Enhanced Automatic Emergency Braking (Not available with (9C1) Police Vehicle or (5W4) Special Service Vehicle.)
- Reverse Automatic Braking (Not available with (9C1) Police Vehicle or (5W4) Special Service Vehicle.)
- StabiliTrak, stability control system with brake assist, includes traction control

Safety-Interior

- Airbags, Frontal airbags for driver and front outboard passenger; Seat-mounted side-impact airbags for driver and front outboard passenger; Head-curtain airbags for all rows in outboard seating positions (Always use seat belts and child restraints. Children are safer when properly secured in a rear seat in the appropriate child restraint. See the Owner's Manual for more information.)
- Front outboard Passenger Sensing System for frontal outboard passenger airbag (Always use seat belts and child restraints. Children are safer when properly secured in a rear seat in the appropriate child restraint. See the Owner's Manual for more information.)
- Hill Start Assist (Not available with (9C1) Police Vehicle or (5W4) Special Services Vehicle.)
- OnStar Services capable (On 4WD model, deleted when (UDA) OnStar deactivated is ordered. See onstar.com for details and limitations. Services vary by model. Service plan required.)

This document contains information considered Confidential between GM and its Clients uniquely. The information provided is not intended for public disclosure. Prices, specifications, and availability are subject to change without notice, and do not include certain fees, taxes and charges that may be required by law or vary by manufacturer or region. Performance figures are guidelines only, and actual performance may vary. Photos may not represent actual vehicles or exact configurations. Content based on report preparer's input is subject to the accuracy of the input provided.
Data Version: 27063. Data Updated: Nov 23, 2025 6:45:00 PM PST.



Vehicle: [Fleet] 2026 Chevrolet Tahoe (CK10706) 4WD 4dr Commercial (Complete)

Safety-Interior
Enhanced Automatic Parking Assist (Not available with (9C1) Police Vehicle or (5W4) Special Service Vehicle.)
HD Surround Vision
Rear Camera Washer
Rear Cross Traffic Braking (Deleted when (9C1) Police Vehicle is ordered.)
Rear Pedestrian Alert
Side Bicyclist Alert (Deleted when (9C1) Police Vehicle is ordered.)
Forward Collision Alert (Deleted when (9C1) Police Vehicle is ordered.)
Safety Alert Seat (Not available with (9C1) Police Vehicle or (5W4) Special Service Vehicle.)
Rear Seat Reminder
Buckle to Drive prevents vehicle from being shifted out of Park until driver seat belt is fastened; times out after 20 seconds and encourages seat belt use, can be turned on and off in Settings or Teen Driver menu (Defaulted off. Feature can be turned on in the infotainment menu.)
Door locks, rear child security, manual
LATCH system (Lower Anchors and Tethers for CHildren), for child restraint seats lower anchors and top tethers located in all second-row seating positions, top tethers located in third row seating positions
Teen Driver a configurable feature that lets you activate customizable vehicle settings associated with a key fob, to help encourage safe driving behavior. It can limit certain available vehicle features, and it prevents certain safety systems from being turned off. An in-vehicle report card gives you information on driving habits and helps you to continue to coach your new driver
Tire Pressure Monitoring System auto learn, includes Tire Fill Alert (does not apply to spare tire)
Warning tones headlamp on, driver and right-front passenger seat belt unfasten and turn signal on
OnStar Basics (OnStar Fleet Basics for Fleet) Drive confidently with core OnStar services including remote commands, built-in voice assistance, real-time traffic and navigation, and Automatic Crash Response to help if you're in need. (Requires (UE1) OnStar. OnStar Basics includes remote commands, Navigation, Voice Assistance, and Automatic Crash Response, for eligible vehicles with compatible software. OnStar Basics is standard for 8 years; OnStar plan, working electrical system, cell reception and GPS signal required. OnStar links to emergency services. Service coverage varies with conditions and location. Service availability, features and functionality vary by device and software version. See onstar.com for details and limitations.)



Hardy Chevrolet Buick GMC Inc

Desmond Delesline | 6787803034 | ddelesline@hardyautomotive.com

Section 6, Item E.

Vehicle: [Fleet] 2026 Chevrolet Tahoe (CK10706) 4WD 4dr Commercial (Complete)

WARRANTY

Warranty Note: <<< Preliminary 2026 Warranty >>>
Basic Years: 3
Basic Miles/km: 36,000
Drivetrain Years: 5
Drivetrain Miles/km: 60,000
Drivetrain Note: 3.0L & 6.0L Duramax® Turbo-Diesel engines, and certain commercial, government, and qualified fleet vehicles: 5 years/100,000 miles
Corrosion Years (Rust-Through): 6
Corrosion Years: 3
Corrosion Miles/km (Rust-Through): 100,000
Corrosion Miles/km: 36,000
Roadside Assistance Years: 5
Roadside Assistance Miles/km: 60,000
Roadside Assistance Note: 3.0L & 6.0L Duramax® Turbo-Diesel engines, and certain commercial, government, and qualified fleet vehicles: 5 years/100,000 miles
Maintenance Note: First Visit: 12 Months/12,000 Miles

This document contains information considered Confidential between GM and its Clients uniquely. The information provided is not intended for public disclosure. Prices, specifications, and availability are subject to change without notice, and do not include certain fees, taxes and charges that may be required by law or vary by manufacturer or region. Performance figures are guidelines only, and actual performance may vary. Photos may not represent actual vehicles or exact configurations. Content based on report preparer's input is subject to the accuracy of the input provided.
Data Version: 27063. Data Updated: Nov 23, 2025 6:45:00 PM PST.



Vehicle: [Fleet] 2026 Chevrolet Tahoe (CK10706) 4WD 4dr Commercial



Quote Worksheet

	MSRP
Base Price	\$57,200.00
Dest Charge	\$2,595.00
Total Options	\$350.00
Subtotal	\$60,145.00
FSA ADJUSTMENT FSA25-VEL33.0	(\$4,600.00)
Subtotal Pre-Tax Adjustments	(\$4,600.00)
Less Customer Discount	\$0.00
Subtotal Discount	\$0.00
Trade-In	\$0.00
Subtotal Trade-In	\$0.00
Taxable Price	\$55,545.00
Sales Tax	\$0.00
Subtotal Taxes	\$0.00
Subtotal Post-Tax Adjustments	\$0.00
Total Sales Price	\$55,545.00
Total for x2	\$111,090.00



Hardy Chevrolet Buick GMC Inc

Desmond Delesline | 6787803034 | ddelesline@hardyautomotive.com

Section 6, Item E.

Vehicle: [Fleet] 2026 Chevrolet Tahoe (CK10706) 4WD 4dr Commercial (Complete)

Dealer Signature / Date

Customer Signature / Date

Selected Model and Options

MODEL		
CODE	MODEL	MSRP
CK10706	2026 Chevrolet Tahoe 4WD 4dr Commercial	\$57,200.00

COLORS	
CODE	DESCRIPTION
GBA	Black

SUSPENSION PKG				
CODE	DESCRIPTION	FRONT WEIGHT	REAR WEIGHT	MSRP
Z56	Suspension Package, heavy-duty, police-rated. Full independent suspension with monotube dampers, linear coil springs, 35mm solid front stabilizer bar and 32mm hollow rear stabilizer bar (Included and only available with (9C1) Police Vehicle.)	0.00 lbs	0.00 lbs	Inc.

EMISSIONS				
CODE	DESCRIPTION	FRONT WEIGHT	REAR WEIGHT	MSRP
FE9	Emissions, Federal requirements	0.00 lbs	0.00 lbs	\$0.00

ENGINE				
CODE	DESCRIPTION	FRONT WEIGHT	REAR WEIGHT	MSRP
L84	Engine, 5.3L EcoTec3 V8 with Dynamic Fuel Management, Direct Injection and Variable Valve Timing, includes aluminum block construction (355 hp [265 kW] @ 5600 rpm, 383 lb-ft of torque [518 Nm] @ 4100 rpm) (STD)	0.00 lbs	0.00 lbs	\$0.00

This document contains information considered Confidential between GM and its Clients uniquely. The information provided is not intended for public disclosure. Prices, specifications, and availability are subject to change without notice, and do not include certain fees, taxes and charges that may be required by law or vary by manufacturer or region. Performance figures are guidelines only, and actual performance may vary. Photos may not represent actual vehicles or exact configurations. Content based on report preparer's input is subject to the accuracy of the input provided.
Data Version: 27005. Data Updated: Nov 16, 2025 6:46:00 PM PST.



Hardy Chevrolet Buick GMC Inc

Desmond Delesline | 6787803034 | ddelesline@hardyautomotive.com

Section 6, Item E.

Vehicle: [Fleet] 2026 Chevrolet Tahoe (CK10706) 4WD 4dr Commercial (Complete)

TRANSMISSION				
CODE	DESCRIPTION	FRONT WEIGHT	REAR WEIGHT	MSRP
MHU	Transmission, 10-speed automatic electronically controlled with overdrive, includes Traction Select System including tow/haul (Included and only available with (9C1) Police Vehicle or (5W4) Special Service Vehicle.)	0.00 lbs	0.00 lbs	Inc.

GVWR				
CODE	DESCRIPTION	FRONT WEIGHT	REAR WEIGHT	MSRP
C6G	GVWR, 7600 lbs. (3447 kg) (4WD models only.) (STD)	0.00 lbs	0.00 lbs	\$0.00

AXLE				
CODE	DESCRIPTION	FRONT WEIGHT	REAR WEIGHT	MSRP
GU5	Rear axle, 3.23 ratio	0.00 lbs	0.00 lbs	\$0.00

PREFERRED EQUIPMENT GROUP				
CODE	DESCRIPTION	FRONT WEIGHT	REAR WEIGHT	MSRP
1FL	Commercial Preferred Equipment Group includes standard equipment	0.00 lbs	0.00 lbs	\$0.00

WHEEL TYPE				
CODE	DESCRIPTION	FRONT WEIGHT	REAR WEIGHT	MSRP
NZV	Wheels, 20" x 9" (50.8 cm x 22.9 cm) machined aluminum with Charcoal pockets (Includes (XCI) 275/60R20SL all-season, blackwall tires unless (QAE) 275/60R20SL all-terrain, blackwall tires are ordered.)	0.00 lbs	0.00 lbs	\$350.00

TIRES				
CODE	DESCRIPTION	FRONT WEIGHT	REAR WEIGHT	MSRP
XCS	Tires, 275/55R20SL all-season, blackwall, Firestone Firehawk Pursuit (Included and only available with (9C1) Police Vehicle.)	0.00 lbs	0.00 lbs	Inc.

This document contains information considered Confidential between GM and its Clients uniquely. The information provided is not intended for public disclosure. Prices, specifications, and availability are subject to change without notice, and do not include certain fees, taxes and charges that may be required by law or vary by manufacturer or region. Performance figures are guidelines only, and actual performance may vary. Photos may not represent actual vehicles or exact configurations. Content based on report preparer's input is subject to the accuracy of the input provided.
Data Version: 27005. Data Updated: Nov 16, 2025 6:46:00 PM PST.



Hardy Chevrolet Buick GMC Inc

Desmond Delesline | 6787803034 | ddelesline@hardyautomotive.com

Section 6, Item E.

Vehicle: [Fleet] 2026 Chevrolet Tahoe (CK10706) 4WD 4dr Commercial (Complete)

PAINT				
CODE	DESCRIPTION	FRONT WEIGHT	REAR WEIGHT	MSRP
GBA	Black	0.00 lbs	0.00 lbs	\$0.00

SEAT TYPE				
CODE	DESCRIPTION	FRONT WEIGHT	REAR WEIGHT	MSRP
AZ3	Seats, front 40/20/40 split-bench (STD)	0.00 lbs	0.00 lbs	\$0.00

SEAT TRIM				
CODE	DESCRIPTION	FRONT WEIGHT	REAR WEIGHT	MSRP
H1T	Jet Black, Cloth seat trim (Requires (9C1) Police Vehicle or (5W4) Special Service Vehicle.)	0.00 lbs	0.00 lbs	\$0.00

RADIO				
CODE	DESCRIPTION	FRONT WEIGHT	REAR WEIGHT	MSRP
URW	Audio system, 17.7" diagonal advanced color LCD display with Google built-in compatibility (select service plan required, terms and limitations apply), including navigation capability, connected apps, personalized profiles for each driver's settings, Natural Voice Recognition and Phone Integration (STD)	0.00 lbs	0.00 lbs	\$0.00

This document contains information considered Confidential between GM and its Clients uniquely. The information provided is not intended for public disclosure. Prices, specifications, and availability are subject to change without notice, and do not include certain fees, taxes and charges that may be required by law or vary by manufacturer or region. Performance figures are guidelines only, and actual performance may vary. Photos may not represent actual vehicles or exact configurations. Content based on report preparer's input is subject to the accuracy of the input provided.
Data Version: 27005. Data Updated: Nov 16, 2025 6:46:00 PM PST.



Hardy Chevrolet Buick GMC Inc

Desmond Delesline | 6787803034 | ddelesline@hardyautomotive.com

Section 6, Item E.

Vehicle: [Fleet] 2026 Chevrolet Tahoe (CK10706) 4WD 4dr Commercial (Complete)

ADDITIONAL EQUIPMENT - PACKAGE

CODE	DESCRIPTION	FRONT WEIGHT	REAR WEIGHT	MSRP
9C1	Identifier for Police Package Vehicle includes, (K47) heavy-duty air filter, (KX4) 250 amp high output alternator, (K6K) 760 cold-cranking amps auxiliary battery, electrical power & vehicle signals for customer connection located at the center front floor. Auxiliary battery circuit for customer connection located in the rear cargo area, (Z56) heavy-duty, police-rated suspension, (XCS) 275/55R20SL all-season tires, (RAV) 275/55R20 all-season spare tire, Police brakes, (RC1) front skid plate, (PXT) 20" steel wheels, Certified speedometer, SEO (5J3) Surveillance Mode interior lighting calibration, SEO (UT7) blunt cut cargo area and blunt cut console area ground wires, (V53) delete luggage rack side rails and (ATD) third row seat delete) (Also includes (NP0) active single-speed transfer case.) *Upon selection of this option the base price will change*	0.00 lbs	0.00 lbs	\$0.00
AMF	Remote Keyless Entry Package includes 4 additional transmitters, NOTE: programming of remotes is at customer's expense. Programming remotes is not a warranty expense (Included and only available with (9C1) Police Vehicle or (5W4) Special Service Vehicle.)	0.00 lbs	0.00 lbs	Inc.

This document contains information considered Confidential between GM and its Clients uniquely. The information provided is not intended for public disclosure. Prices, specifications, and availability are subject to change without notice, and do not include certain fees, taxes and charges that may be required by law or vary by manufacturer or region. Performance figures are guidelines only, and actual performance may vary. Photos may not represent actual vehicles or exact configurations. Content based on report preparer's input is subject to the accuracy of the input provided.
Data Version: 27005. Data Updated: Nov 16, 2025 6:46:00 PM PST.



Vehicle: [Fleet] 2026 Chevrolet Tahoe (CK10706) 4WD 4dr Commercial (Complete)

ADDITIONAL EQUIPMENT - MECHANICAL				
CODE	DESCRIPTION	FRONT WEIGHT	REAR WEIGHT	MSRP
5J9	Calibration, taillamp flasher, Red/White (Included and only available with (9C1) Police Vehicle or (5W4) Special Service Vehicle.)	0.00 lbs	0.00 lbs	Inc.
5LO	Calibration, taillamp flasher, Red/Red (Included and only available with (9C1) Police Vehicle or (5W4) Special Service Vehicle.)	0.00 lbs	0.00 lbs	Inc.
6J7	Flasher system, headlamp and taillamp, DRL compatible with control wire (Included and only available with (9C1) Police Vehicle or (5W4) Special Service Vehicle.)	0.00 lbs	0.00 lbs	Inc.
—	Capless Fuel Fill (Included and only available with (9C1) Police Vehicle or (5W4) Special Service Vehicle.)	0.00 lbs	0.00 lbs	Inc.
J55	Brake system, heavy duty with front Brembo calipers and 16" front rotors (Included and only available with (9C1) Police Package.)	0.00 lbs	0.00 lbs	Inc.
K3W	Battery, 900 cold-cranking amps with 95 amp hour rating (Included and only available with (9C1) Police Vehicle or (5W4) Special Service Vehicle.)	0.00 lbs	0.00 lbs	Inc.
K6K	Battery, auxiliary, 760 cold-cranking amps with 70 amp hour rating (packaged behind left rear cargo area panel) (Included and only available with (9C1) Police Vehicle or (5W4) Special Service Vehicle.)	0.00 lbs	0.00 lbs	Inc.
KX4	Alternator, 250 amps (Included and only available with (9C1) Police Vehicle or (5W4) Special Service Vehicle.)	0.00 lbs	0.00 lbs	Inc.
RC1	Skid plate, front (Included and only available with (9C1) Police Vehicle or (5W4) Special Service Vehicle.)	0.00 lbs	0.00 lbs	Inc.
T66	Wiring provision, for outside mirrors and cargo side mirrors (Included and only available with (9C1) Police Vehicle or (5W4) Special Service Vehicle.)	0.00 lbs	0.00 lbs	Inc.
UT7	Ground wires, blunt cut cargo area and blunt cut console area (Included and only available with (9C1) Police Vehicle or (5W4) Special Service Vehicle.)	0.00 lbs	0.00 lbs	Inc.
V03	Cooling system, extra capacity (Included and only available with (9C1) Police Vehicle.)	0.00 lbs	0.00 lbs	Inc.
V76	Recovery hooks, 2 front, frame-mounted, Black (Requires (9C1) Police Vehicle or (5W4) Special Service Vehicle. Required on all models going to Alaska, Guam, Hawaii, Puerto Rico and Virgin Islands. All Tahoe (9C1) and (5W4) vehicles include front fascia with recovery hook openings.)	0.00 lbs	0.00 lbs	Inc.

This document contains information considered Confidential between GM and its Clients uniquely. The information provided is not intended for public disclosure. Prices, specifications, and availability are subject to change without notice, and do not include certain fees, taxes and charges that may be required by law or vary by manufacturer or region. Performance figures are guidelines only, and actual performance may vary. Photos may not represent actual vehicles or exact configurations. Content based on report preparer's input is subject to the accuracy of the input provided.
Data Version: 27005. Data Updated: Nov 16, 2025 6:46:00 PM PST.



Vehicle: [Fleet] 2026 Chevrolet Tahoe (CK10706) 4WD 4dr Commercial ( Complete)

ADDITIONAL EQUIPMENT - EXTERIOR

CODE	DESCRIPTION	FRONT WEIGHT	REAR WEIGHT	MSRP
—	Exterior ornamentation delete (front & rear Chevrolet bowties will remain) (Included and only available with (9C1) Police Vehicle or (5W4) Special Service Vehicle.)	0.00 lbs	0.00 lbs	Inc.
RAV	Tire, spare 275/55R20 all-season, blackwall, Firestone Firehawk Pursuit (Included and only available with (9C1) Police Vehicle.)	0.00 lbs	0.00 lbs	Inc.
RNQ	Wheel, full-size spare, matching 20" (50.8 cm) steel wheel without center cap (Included and only available with (9C1) Police Vehicle.)	0.00 lbs	0.00 lbs	Inc.
V53	Luggage rack side rails, delete (Included and only available with (9C1) Police Vehicle or (5W4) Special Service Package.)	0.00 lbs	0.00 lbs	Inc.
WUA	Fascia, front high-approach angle with recovery hook openings, but does not include hooks (Included and only available with (9C1) Police Vehicle or (5W4) Special Service Vehicle.)	0.00 lbs	0.00 lbs	Inc.

This document contains information considered Confidential between GM and its Clients uniquely. The information provided is not intended for public disclosure. Prices, specifications, and availability are subject to change without notice, and do not include certain fees, taxes and charges that may be required by law or vary by manufacturer or region. Performance figures are guidelines only, and actual performance may vary. Photos may not represent actual vehicles or exact configurations. Content based on report preparer's input is subject to the accuracy of the input provided.
Data Version: 27005. Data Updated: Nov 16, 2025 6:46:00 PM PST.



Vehicle: [Fleet] 2026 Chevrolet Tahoe (CK10706) 4WD 4dr Commercial (Complete)

ADDITIONAL EQUIPMENT - INTERIOR				
CODE	DESCRIPTION	FRONT WEIGHT	REAR WEIGHT	MSRP
5J3	Calibration, Surveillance Mode interior lighting (Included and only available with (9C1) Police Vehicle or (5W4) Special Service Vehicle.)	0.00 lbs	0.00 lbs	Inc.
5Y1	Front center seat (20% seat) delete power driver and passenger bucket seats in base cloth trim. Derived from RPO (AZ3) 40/20/40 split-bench seat with the 20% section removed, which also removes the auxiliary power outlet, USB port and input jack for audio system. Does not include a floor console. All exposed floor area will remain untrimmed. (On 4WD model, requires (9C1) Police Vehicle or (5W4) Special Service Vehicle. Not available with (A50) front bucket seats or (B30) color-keyed carpeting floor covering. (UBD) 2 type-A and C, charge and data USB ports and (K14) 2, 120-volt power outlets are bundled and shipped loose when ordered for upfitter installation.)	0.00 lbs	0.00 lbs	\$0.00
—	Instrumentation, analog with certified 140 mph speedometer, odometer with trip odometer, engine hour meter, fuel level, voltmeter, engine temperature, oil pressure and tachometer (Included and only available with (9C1) Police Vehicle or (5W4) Special Service Vehicle.)	0.00 lbs	0.00 lbs	Inc.
—	Power supply, 100-amp, auxiliary battery, rear electrical center (Included and only available with (9C1) Police Vehicle or (5W4) Special Service Vehicle.)	0.00 lbs	0.00 lbs	Inc.
—	Power supply, 120-amp, (4) 30-amp circuit, Primary battery, relay controlled, passenger compartment harness wiring (Included and only available with (9C1) Police Vehicle or (5W4) Special Service Vehicle.)	0.00 lbs	0.00 lbs	Inc.
—	Power supply, 50-amp, power supply, auxiliary battery, passenger compartment wiring harness (Included and only available with (9C1) Police Vehicle or (5W4) Special Service Vehicle.)	0.00 lbs	0.00 lbs	Inc.
—	Theft-deterrent system, vehicle, PASS-Key III (Included and only available with (9C1) Police Vehicle or (5W4) Special Service Vehicle.)	0.00 lbs	0.00 lbs	Inc.
ATD	Seat delete, third row passenger	0.00 lbs	0.00 lbs	Inc.
AX2	Key, unique Included and only available with (9C1) Police Vehicle or (5W4) Special Service Vehicle.)	0.00 lbs	0.00 lbs	Inc.
BCV	Lock control, driver side auto door lock disable (Included and only available with (9C1) Police Vehicle or (5W4) Special Service Vehicle.)	0.00 lbs	0.00 lbs	Inc.
BTV	Remote start (Included and only available with (9C1) Police Vehicle or (5W4) Special Service Vehicle.)	0.00 lbs	0.00 lbs	Inc.

This document contains information considered Confidential between GM and its Clients uniquely. The information provided is not intended for public disclosure. Prices, specifications, and availability are subject to change without notice, and do not include certain fees, taxes and charges that may be required by law or vary by manufacturer or region. Performance figures are guidelines only, and actual performance may vary. Photos may not represent actual vehicles or exact configurations. Content based on report preparer's input is subject to the accuracy of the input provided.
Data Version: 27005. Data Updated: Nov 16, 2025 6:46:00 PM PST.



Hardy Chevrolet Buick GMC Inc

Desmond Delesline | 6787803034 | ddelesline@hardyautomotive.com

Section 6, Item E.

Vehicle: [Fleet] 2026 Chevrolet Tahoe (CK10706) 4WD 4dr Commercial (Complete)

K34	Cruise control, electronic with set and resume speed (Included and only available with (9C1) Police Vehicle or (5W4) Special Service Vehicle.)	0.00 lbs	0.00 lbs	Inc.
UUA	Display, automatic occupant sensing (Included and only available with (9C1) Police Vehicle or (5W4) Special Service Vehicle.)	0.00 lbs	0.00 lbs	Inc.
VZ2	Speedometer calibration (Included and only available with (9C1) Police Vehicle or (5W4) Special Service Vehicle.)	0.00 lbs	0.00 lbs	Inc.

ADDITIONAL EQUIPMENT - SAFETY-INTERIOR

CODE	DESCRIPTION	FRONT WEIGHT	REAR WEIGHT	MSRP
—	Active Hill Hold Assist (Included and only available with (9C1) Police Vehicle or (5W4) Special Service Vehicle.)	0.00 lbs	0.00 lbs	Inc.
—	Seat belts, 3-point, all seating positions (Included and only available with (9C1) Police Vehicle or (5W4) Special Service Vehicle.)	0.00 lbs	0.00 lbs	Inc.
UD7	Rear Parking Assist (Included and only available with (9C1) Police Vehicle and (5W4) Special Service Vehicle.)	0.00 lbs	0.00 lbs	Inc.

ADDITIONAL EQUIPMENT - OTHER

CODE	DESCRIPTION	FRONT WEIGHT	REAR WEIGHT	MSRP
—	Protected idle allows vehicle engine to remain idling and vehicle immobilized while FOB is outside vehicle (Included and only available (9C1) Police Vehicle or (5W4) Special Service Vehicle.)	0.00 lbs	0.00 lbs	Inc.
Options Total		0.00 lbs	0.00 lbs	\$350.00

This document contains information considered Confidential between GM and its Clients uniquely. The information provided is not intended for public disclosure. Prices, specifications, and availability are subject to change without notice, and do not include certain fees, taxes and charges that may be required by law or vary by manufacturer or region. Performance figures are guidelines only, and actual performance may vary. Photos may not represent actual vehicles or exact configurations. Content based on report preparer's input is subject to the accuracy of the input provided.
Data Version: 27005. Data Updated: Nov 16, 2025 6:46:00 PM PST.



Stingray Chevrolet

"Magic" Peter | 407-221-7600 | magicpeterfleet@gmail.com

Section 6, Item E.

Fire Chief Special 9C1 A50



Additional Options:



Stingray Chevrolet

"Magic" Peter | 407-221-7600 | magicpeterfleet@gmail.com

Section 6, Item E.

Vehicle: [Fleet] 2026 Chevrolet Tahoe (CK10706) 4WD 4dr Commercial (✔ Complete)

Window Sticker

SUMMARY

[Fleet] 2026 Chevrolet Tahoe (CK10706) 4WD 4dr CommercialMSRP:\$57,200.00

Interior:Jet Black, Cloth seat trim

Exterior 1:Summit White

Exterior 2:No color has been selected.

Engine, 5.3L EcoTec3 V8

Transmission, 10-speed automatic

OPTIONS

CODE	MODEL	MSRP
CK10706	[Fleet] 2026 Chevrolet Tahoe (CK10706) 4WD 4dr Commercial	\$57,200.00
OPTIONS		
1FL	Commercial Preferred Equipment Group	\$0.00
5J3 *	Calibration, Surveillance Mode interior lighting	Inc.
5J9 *	Calibration, taillamp flasher, Red/White	Inc.
5LO *	Calibration, taillamp flasher, Red/Red	Inc.
6J7 *	Flasher system, headlamp and taillamp, DRL compatible with control wire	Inc.
9C1	Identifier for Police Package Vehicle	\$0.00
A50	Seats, front bucket	\$350.00
AMF	Remote Keyless Entry Package	Inc.
ATD	Seat delete, third row passenger	Inc.
AX2	Key, unique	Inc.
BCV	Lock control, driver side auto door lock disable	Inc.
BTV	Remote start	Inc.
C6G	GVWR, 7600 lbs. (3447 kg)	Inc.
CTB	Intersection Automatic Emergency Braking	Inc.
D07	Console, floor included w/ A50	Inc.
DRZ	Rear Camera Mirror, inside rearview auto-dimming	Inc.
FE9	Emissions, Federal requirements	\$0.00
GAZ	Summit White	\$0.00

This document contains information considered Confidential between GM and its Clients uniquely. The information provided is not intended for public disclosure. Prices, specifications, and availability are subject to change without notice, and do not include certain fees, taxes and charges that may be required by law or vary by manufacturer or region. Performance figures are guidelines only, and actual performance may vary. Photos may not represent actual vehicles or exact configurations. Content based on report preparer's input is subject to the accuracy of the input provided.
Data Version: 26682. Data Updated: Oct 8, 2025 6:51:00 PM PDT.



Stingray Chevrolet

"Magic" Peter | 407-221-7600 | magicpeterfleet@gmail.com

Section 6, Item E.

Vehicle: [Fleet] 2026 Chevrolet Tahoe (CK10706) 4WD 4dr Commercial (Complete)

GU5	Rear axle, 3.23 ratio		\$0.00
H1T	Jet Black, Cloth seat trim		\$0.00
K34	Cruise control, electronic with set and resume speed	Inc.	
K3W	Battery, 850 cold-cranking amps with 95 amp hour rating	Inc.	
K6K	Battery, auxiliary, 760 cold-cranking amps with 70 amp hour rating	Inc.	
KX4	Alternator, 250 amps	Inc.	
L84	Engine, 5.3L EcoTec3 V8		\$0.00
MHU	Transmission, 10-speed automatic	Inc.	
NZV	Wheels, 20" x 9" (50.8 cm x 22.9 cm) machined aluminum wit Charcoal pockets		\$350.00
PQA	1FL Safety Package required w/ A50 on PPV		\$825.00
RAV	Tire, spare 275/55R20 all-season, blackwall, Firestone Firehawk Pursuit	Inc.	
RC1	Skid plate, front	Inc.	
RNQ	Wheel, full-size spare, matching 20" (50.8 cm) steel wheel without center cap	Inc.	
T66	Wiring provision, for outside mirrors and cargo side mirrors	Inc.	
TQ5	IntelliBeam, automatic high beam on/off	Inc.	
UD7	Rear Parking Assist	Inc.	
UDA	OnStar deactivated (does not delete Bluetooth) required w/ A50 on PPV		\$50.00
UEU	Forward Collision Alert	Inc.	
UFB	Rear Cross Traffic Braking	Inc.	
UHY	Automatic Emergency Braking	Inc.	
UKI	Blind Zone Steering Assist	Inc.	
UKM	Lane Keep Assist	Inc.	
UKT	Front Pedestrian and Bicyclist Braking	Inc.	
UOW	Side Bicyclist Alert	Inc.	
URW	Audio system, 17.7" diagonal advanced color LCD display		\$0.00
UT7	Ground wires, blunt cut cargo area and blunt cut console area	Inc.	
V03	Cooling system, extra capacity	Inc.	
V53	Luggage rack side rails, delete	Inc.	
V76	Recovery hooks, 2 front, frame-mounted, Black	Inc.	
VK3	License plate front mounting package		\$0.00

this item is
entirely optional; it
replaces black steel
wheels

This document contains information considered Confidential between GM and its Clients uniquely. The information provided is not intended for public disclosure. Prices, specifications, and availability are subject to change without notice, and do not include certain fees, taxes and charges that may be required by law or vary by manufacturer or region. Performance figures are guidelines only, and actual performance may vary. Photos may not represent actual vehicles or exact configurations. Content based on report preparer's input is subject to the accuracy of the input provided.
Data Version: 26682. Data Updated: Oct 8, 2025 6:51:00 PM PDT.



Stingray Chevrolet

"Magic" Peter | 407-221-7600 | magicpeterfleet@gmail.com

Section 6, Item E.

Vehicle: [Fleet] 2026 Chevrolet Tahoe (CK10706) 4WD 4dr Commercial (Complete)

VZ2	Speedometer calibration	Inc.
WUA	Fascia, front high-approach angle	Inc.
XCS	Tires, 275/55R20SL all-season, blackwall, Firestone Firehawk Pursuit	Inc.
Z56	Suspension Package, heavy-duty, police-rated.	Inc.
—	Capless Fuel Fill	Inc.
—	Exterior ornamentation delete	Inc.
—	Instrumentation, analog	Inc.
—	Theft-deterrent system, vehicle, PASS-Key III	Inc.
—	Power supply, 50-amp, power supply, auxiliary battery, passenger compartment wiring harness	Inc.
—	Power supply, 100-amp, auxiliary battery, passenger compartment wiring harness	Inc.
—	Power supply, 120-amp, (4) 30-amp circuit, Primary battery, relay controlled, passenger compartment harness wiring	Inc.
—	Seat belts, 3-point, all seating positions	Inc.
—	Active Hill Hold Assist	Inc.
—	Protected idle	Inc.
SUBTOTAL		\$58,775.00
Adjustments Total		\$0.00
Destination Charge		\$2,595.00
TOTAL PRICE		\$61,370.00

FUEL ECONOMY	
Est City:N/A	
Est Highway:N/A	
Est Highway Cruising Range:N/A	

This document contains information considered Confidential between GM and its Clients uniquely. The information provided is not intended for public disclosure. Prices, specifications, and availability are subject to change without notice, and do not include certain fees, taxes and charges that may be required by law or vary by manufacturer or region. Performance figures are guidelines only, and actual performance may vary. Photos may not represent actual vehicles or exact configurations. Content based on report preparer's input is subject to the accuracy of the input provided.
Data Version: 26682. Data Updated: Oct 8, 2025 6:51:00 PM PDT.



Vehicle: [Fleet] 2026 Chevrolet Tahoe (CK10706) 4WD 4dr Commercial (Complete)

Standard Equipment

Mechanical	
	Engine, 5.3L EcoTec3 V8 with Dynamic Fuel Management, Direct Injection and Variable Valve Timing, includes aluminum block construction (355 hp [265 kW] @ 5600 rpm, 383 lb-ft of torque [518 Nm] @ 4100 rpm) (STD)
	Transmission, 10-speed automatic electronically controlled with overdrive, includes Traction Select System including tow/haul (STD)
	Rear axle, 3.23 ratio
	Suspension, Premium Smooth Ride
	GVWR, 7600 lbs. (3447 kg) (4WD models only.) (STD)
	Keyless start, push button
	Automatic Stop/Start (Not available when (9C1) Police Vehicle or (5W4) Special Service Vehicle is ordered.)
	Engine control, stop/start system disable button, non-latching (Not available when (9C1) Police Vehicle or (5W4) Special Service Vehicle is ordered.)
	Engine air filtration monitor
	Fuel, gasoline, E15
	Transfer case, active, single-speed, electronic Autotrac does not include neutral. Cannot be dinghy towed
	Differential, mechanical limited-slip
	4-wheel drive
	Air filter, heavy-duty
	Cooling, external engine oil cooler, heavy-duty air-to-oil integral to driver side of radiator
	Cooling, auxiliary transmission oil cooler, heavy-duty air-to-oil
	Battery, 730 cold-cranking amps with 80 amp hour rating (Not available with (9C1) Police Package or (5W4) Special Service Package.)
	Alternator, 220 amps (Not available with (9C1) Police Vehicle or (5W4) Special Service Vehicle.)
	Trailer equipment includes trailering hitch platform, 7-wire harness with independent fused trailering circuits mated to a 7-way connector and 2" trailering receiver
	Trailer sway control
	Hitch Guidance
	Suspension, front coil-over-shock with stabilizer bar
	Suspension, rear multi-link with coil springs
	Steering, power
	Brakes, 4-wheel antilock, 4-wheel disc with DURALIFE rotors
	Exhaust, single system, single-outlet

This document contains information considered Confidential between GM and its Clients uniquely. The information provided is not intended for public disclosure. Prices, specifications, and availability are subject to change without notice, and do not include certain fees, taxes and charges that may be required by law or vary by manufacturer or region. Performance figures are guidelines only, and actual performance may vary. Photos may not represent actual vehicles or exact configurations. Content based on report preparer's input is subject to the accuracy of the input provided.
Data Version: 26682. Data Updated: Oct 8, 2025 6:51:00 PM PDT.



Stingray Chevrolet

"Magic" Peter | 407-221-7600 | magicpeterfleet@gmail.com

Section 6, Item E.

Vehicle: [Fleet] 2026 Chevrolet Tahoe (CK10706) 4WD 4dr Commercial (✔ Complete)

Mechanical

Mechanical Jack with tools

Exterior

- Wheels, 18" x 8.5" (45.7 cm x 21.6 cm) Bright Silver painted aluminum (STD)
- Tires, 265/65R18SL all-season, blackwall (Standard with (RCV) 18" Bright Silver painted aluminum wheels only.) (STD)
- Wheel, full-size spare, 17" (43.2 cm) steel
- Tire, spare P265/70R17 all-season, blackwall
- Tire carrier, lockable outside spare, winch-type mounted under frame at rear
- Active aero shutters, upper
- Fascia, front
- Luggage rack side rails, roof-mounted, Black, standard (Available with (5W4) Special Services Vehicle.)
- Assist steps, Black with chrome accent strip
- Headlamps, LED
- Tail lamps, LED
- Mirrors, outside heated power-adjustable, manual-folding, body-color
- Mirror caps, body-color
- Glass, deep-tinted (all windows, except light-tinted glass on windshield and driver- and front passenger-side glass)
- Glass, acoustic, laminated
- Glass, windshield shade band
- Windshield, solar absorbing
- Wipers, front intermittent, Rainsense
- Wiper, rear intermittent with washer
- Door handles, body-color
- Liftgate, rear manual

Entertainment

- Audio system, 17.7" diagonal advanced color LCD display with Google built-in compatibility (select service plan required, terms and limitations apply), including navigation capability, connected apps, personalized profiles for each driver's settings, Natural Voice Recognition and Phone Integration (STD)
- Audio system feature, 6-speaker system
- Bluetooth for phone personal cell phone connectivity to vehicle audio system
- 5G Wi-Fi Hotspot capable (Requires (UE1) OnStar. Terms and limitations apply. See onstar.com or dealer for details.)

This document contains information considered Confidential between GM and its Clients uniquely. The information provided is not intended for public disclosure. Prices, specifications, and availability are subject to change without notice, and do not include certain fees, taxes and charges that may be required by law or vary by manufacturer or region. Performance figures are guidelines only, and actual performance may vary. Photos may not represent actual vehicles or exact configurations. Content based on report preparer's input is subject to the accuracy of the input provided.
Data Version: 26682. Data Updated: Oct 8, 2025 6:51:00 PM PDT.



Stingray Chevrolet

"Magic" Peter | 407-221-7600 | magicpeterfleet@gmail.com

Section 6, Item E.

Vehicle: [Fleet] 2026 Chevrolet Tahoe (CK10706) 4WD 4dr Commercial (Complete)

Entertainment

- Wi-Fi Hotspot capable (Requires (UE1) OnStar. Terms and limitations apply. See onstar.com or dealer for details.)
- SiriusXM, delete
- Wireless Apple CarPlay/Wireless Android Auto

Interior

- Seats, front 40/20/40 split-bench (STD)
- Seat adjuster, driver 8-way power
- Seat adjuster, front passenger 6-way power
- Seat adjuster, front passenger 8-way power
- Seat adjuster, driver 2-way power lumbar
- Seat adjuster, front passenger 2-way power lumbar
- Seats, second row 60/40 split-folding bench, manual
- Seats, third row 60/40 split-folding bench, manual (Not available with (9C1) Police Package or (5W4) Special Service Package.)
- Floor covering, Black rubberized vinyl (Deleted when (B30) floor covering is ordered.)
- Electronic Precision Shift
- Steering column lock, electrical
- Steering column, manual tilt and telescopic
- Steering wheel, vinyl
- Steering wheel controls, mounted audio, Driver Information Center, Adaptive Cruise Control, Forward Collision Alert following gap button and heated steering wheel (when equipped)
- Driver Information Center, 11" diagonal multi-color digital display
- Door locks, power programmable with lockout protection and delayed locking
- Keyless Open includes extended range Remote Keyless Entry
- Window, power with driver Express-Up/Down
- Window, power with front passenger Express-Up/Down
- Windows, power with rear Express-Down
- Adaptive Cruise Control (Not available with (9C1) Police Vehicle or (5W4) Special Service Vehicle.)
- Universal Vehicle Module
- Theft-deterrent system, electrical, unauthorized entry
- Display, automatic occupant sensing (Requires (9C1) Police Vehicle or (5W4) Special Service Vehicle.)
- Wireless Phone Charging, for portable devices

This document contains information considered Confidential between GM and its Clients uniquely. The information provided is not intended for public disclosure. Prices, specifications, and availability are subject to change without notice, and do not include certain fees, taxes and charges that may be required by law or vary by manufacturer or region. Performance figures are guidelines only, and actual performance may vary. Photos may not represent actual vehicles or exact configurations. Content based on report preparer's input is subject to the accuracy of the input provided.
Data Version: 26682. Data Updated: Oct 8, 2025 6:51:00 PM PDT.



Stingray Chevrolet

"Magic" Peter | 407-221-7600 | magicpeterfleet@gmail.com

Section 6, Item E.

Vehicle: [Fleet] 2026 Chevrolet Tahoe (CK10706) 4WD 4dr Commercial (✔ Complete)

Interior

- USB ports, 2 type-A and C, charge and data, located on front console
- USB ports, 2 type-C, charge-only, located in third row
- Air conditioning, tri-zone automatic climate control with individual climate settings for driver, right front passenger and rear seat occupants
- Air conditioning, rear
- Defogger, rear-window electric
- Power outlets, 2, 120-volt, located on the rear of the center console and rear cargo area
- Mirror, inside rearview manual day/night
- Visors, driver and front passenger illuminated vanity mirrors, sliding
- Assist handles, overhead, driver and front passenger, located in headliner
- Assist handles, front passenger A-pillar and second row outboard B-pillar
- Lighting, interior with dome light, driver- and passenger-side door switch with delayed entry feature, cargo lights, door handle or Remote Keyless Entry-activated illuminated entry and map lights in front and second seat positions
- Cargo management system
- Chevrolet Connected Access capable (Subject to terms. See onstar.com or dealer for details.)

Safety-Interior

- Forward Collision Alert (Deleted when (9C1) Police Vehicle or (5W4) Special Service Vehicle is ordered.)
- Front Pedestrian and Bicyclist Braking (Deleted when (9C1) Police Vehicle or (5W4) Special Service Vehicle is ordered.)
- Forward Collision Alert (Deleted when (9C1) Police Vehicle or (5W4) Special Service Vehicle is ordered.)
- Airbags, Frontal airbags for driver and front outboard passenger; Seat-mounted side-impact airbags for driver and front outboard passenger; Head-curtain airbags for all rows in outboard seating positions (Included and only available with (9C1) Police Vehicle or (5W4) Special Services Vehicle.)
- Front outboard Passenger Sensing System for frontal outboard passenger airbag (Always use seat belts and child restraints. Children are safer when properly secured in a rear seat in the appropriate child restraint. See the Owner's Manual for more information.)
- Hill Start Assist
- OnStar Services capable (On 4WD model, deleted when (UDA) OnStar deactivated is ordered. See onstar.com for details and limitations. Services vary by model. Service plan required.)
- Enhanced Automatic Parking Assist (Not available with (9C1) Police Vehicle or (5W4) Special Service Vehicle.)
- HD Surround Vision
- Rear Camera Washer
- Forward Collision Alert (Deleted when (9C1) Police Vehicle or (5W4) Special Service Vehicle is ordered.)

This document contains information considered Confidential between GM and its Clients uniquely. The information provided is not intended for public disclosure. Prices, specifications, and availability are subject to change without notice, and do not include certain fees, taxes and charges that may be required by law or vary by manufacturer or region. Performance figures are guidelines only, and actual performance may vary. Photos may not represent actual vehicles or exact configurations. Content based on report preparer's input is subject to the accuracy of the input provided.
Data Version: 26682. Data Updated: Oct 8, 2025 6:51:00 PM PDT.



Vehicle: [Fleet] 2026 Chevrolet Tahoe (CK10706) 4WD 4dr Commercial (Complete)

Safety-Interior

- Rear Pedestrian Alert
- Forward Collision Alert (Deleted when (9C1) Police Vehicle or (5W4) Special Service Vehicle is ordered.)
- Forward Collision Alert (Deleted when (9C1) Police Vehicle or (5W4) Special Service Vehicle is ordered.)
- Safety Alert Seat
- Rear Seat Reminder
- Buckle to Drive prevents vehicle from being shifted out of Park until driver seat belt is fastened; times out after 20 seconds and encourages seat belt use, can be turned on and off in Settings or Teen Driver menu (Defaulted off. Feature can be turned on in the infotainment menu.)
- Door locks, rear child security, manual
- LATCH system (Lower Anchors and Tethers for CHildren), for child restraint seats lower anchors and top tethers located in all second-row seating positions, top tethers located in third row seating positions
- Teen Driver a configurable feature that lets you activate customizable vehicle settings associated with a key fob, to help encourage safe driving behavior. It can limit certain available vehicle features, and it prevents certain safety systems from being turned off. An in-vehicle report card gives you information on driving habits and helps you to continue to coach your new driver
- Tire Pressure Monitoring System auto learn, includes Tire Fill Alert (does not apply to spare tire)
- Warning tones headlamp on, driver and right-front passenger seat belt unfasten and turn signal on
- OnStar Basics (OnStar Fleet Basics for Fleet) Drive confidently with core OnStar services including remote commands, built-in voice assistance, real-time traffic and navigation, and Automatic Crash Response to help if you're in need. (Requires (UE1) OnStar. OnStar Basics includes remote commands, Navigation, Voice Assistance, and Automatic Crash Response, for eligible vehicles with compatible software. OnStar Basics is standard for 8 years; OnStar plan, working electrical system, cell reception and GPS signal required. OnStar links to emergency services. Service coverage varies with conditions and location. Service availability, features and functionality vary by device and software version. See onstar.com for details and limitations.)

Safety-Mechanical

- Enhanced Automatic Emergency Braking
- Reverse Automatic Braking (Not available with (9C1) Police Vehicle or (5W4) Special Service Vehicle.)
- StabiliTrak, stability control system with brake assist, includes traction control

This document contains information considered Confidential between GM and its Clients uniquely. The information provided is not intended for public disclosure. Prices, specifications, and availability are subject to change without notice, and do not include certain fees, taxes and charges that may be required by law or vary by manufacturer or region. Performance figures are guidelines only, and actual performance may vary. Photos may not represent actual vehicles or exact configurations. Content based on report preparer's input is subject to the accuracy of the input provided.
Data Version: 26682. Data Updated: Oct 8, 2025 6:51:00 PM PDT.



Stingray Chevrolet

"Magic" Peter | 407-221-7600 | magicpeterfleet@gmail.com

Section 6, Item E.

Vehicle: [Fleet] 2026 Chevrolet Tahoe (CK10706) 4WD 4dr Commercial (Complete)

WARRANTY

Warranty Note: <<< Preliminary 2026 Warranty >>>
Basic Years: 3
Basic Miles/km: 36,000
Drivetrain Years: 5
Drivetrain Miles/km: 60,000
Drivetrain Note: 3.0L & 6.0L Duramax® Turbo-Diesel engines, and certain commercial, government, and qualified fleet vehicles: 5 years/100,000 miles
Corrosion Years (Rust-Through): 6
Corrosion Years: 3
Corrosion Miles/km (Rust-Through): 100,000
Corrosion Miles/km: 36,000
Roadside Assistance Years: 5
Roadside Assistance Miles/km: 60,000
Roadside Assistance Note: 3.0L & 6.0L Duramax® Turbo-Diesel engines, and certain commercial, government, and qualified fleet vehicles: 5 years/100,000 miles
Maintenance Note: First Visit: 12 Months/12,000 Miles

Selected Model and Options

MODEL

CODE	MODEL	MSRP
CK10706	2026 Chevrolet Tahoe 4WD 4dr Commercial	\$57,200.00

COLORS

CODE	DESCRIPTION
GAZ	Summit White

SUSPENSION PKG

CODE	DESCRIPTION	MSRP
Z56	Suspension Package, heavy-duty, police-rated.	Inc.

EMISSIONS

CODE	DESCRIPTION	MSRP
FE9	Emissions, Federal requirements	\$0.00

ENGINE

CODE	DESCRIPTION	MSRP
L84	Engine, 5.3L EcoTec3 V8	\$0.00

This document contains information considered Confidential between GM and its Clients uniquely. The information provided is not intended for public disclosure. Prices, specifications, and availability are subject to change without notice, and do not include certain fees, taxes and charges that may be required by law or vary by manufacturer or region. Performance figures are guidelines only, and actual performance may vary. Photos may not represent actual vehicles or exact configurations. Content based on report preparer's input is subject to the accuracy of the input provided.
Data Version: 26682. Data Updated: Oct 8, 2025 6:51:00 PM PDT.



Stingray Chevrolet

"Magic" Peter | 407-221-7600 | magicpeterfleet@gmail.com

Section 6, Item E.

Vehicle: [Fleet] 2026 Chevrolet Tahoe (CK10706) 4WD 4dr Commercial (Complete)

TRANSMISSION

CODE	DESCRIPTION	MSRP
MHU	Transmission, 10-speed automatic	Inc.

GVWR

CODE	DESCRIPTION	MSRP
C6G	GVWR, 7600 lbs. (3447 kg)	Inc.

AXLE

CODE	DESCRIPTION	MSRP
GU5	Rear axle, 3.23 ratio	\$0.00

PREFERRED EQUIPMENT GROUP

CODE	DESCRIPTION	MSRP
1FL	Commercial Preferred Equipment Group	\$0.00

WHEEL TYPE

CODE	DESCRIPTION	MSRP
NZV	Wheels, 20" x 9" (50.8 cm x 22.9 cm) machined aluminum wit Charcoal pockets	\$350.00

TIRES

CODE	DESCRIPTION	MSRP
XCS	Tires, 275/55R20SL all-season, blackwall, Firestone Firehawk Pursuit	Inc.

PAINT

CODE	DESCRIPTION	MSRP
GAZ	Summit White	\$0.00

SEAT TYPE

CODE	DESCRIPTION	MSRP
A50	Seats, front bucket	\$350.00

SEAT TRIM

CODE	DESCRIPTION	MSRP
H1T	Jet Black, Cloth seat trim	\$0.00

This document contains information considered Confidential between GM and its Clients uniquely. The information provided is not intended for public disclosure. Prices, specifications, and availability are subject to change without notice, and do not include certain fees, taxes and charges that may be required by law or vary by manufacturer or region. Performance figures are guidelines only, and actual performance may vary. Photos may not represent actual vehicles or exact configurations. Content based on report preparer's input is subject to the accuracy of the input provided.
Data Version: 26682. Data Updated: Oct 8, 2025 6:51:00 PM PDT.



Stingray Chevrolet

"Magic" Peter | 407-221-7600 | magicpeterfleet@gmail.com

Section 6, Item E.

Vehicle: [Fleet] 2026 Chevrolet Tahoe (CK10706) 4WD 4dr Commercial (Complete)

RADIO

CODE	DESCRIPTION	MSRP
URW	Audio system, 17.7" diagonal advanced color LCD display	\$0.00

ADDITIONAL EQUIPMENT - PACKAGE

CODE	DESCRIPTION	MSRP
9C1	Identifier for Police Package Vehicle	\$0.00
PQA	1FL Safety Package	\$825.00
AMF	Remote Keyless Entry Package	Inc.

ADDITIONAL EQUIPMENT - MECHANICAL

CODE	DESCRIPTION	MSRP
V03	Cooling system, extra capacity	Inc.
K3W	Battery, 850 cold-cranking amps with 95 amp hour rating	Inc.
K6K	Battery, auxiliary, 760 cold-cranking amps with 70 amp hour rating	Inc.
KX4	Alternator, 250 amps	Inc.
V76	Recovery hooks, 2 front, frame-mounted, Black	Inc.
RC1	Skid plate, front	Inc.
—	Capless Fuel Fill	Inc.
UT7	Ground wires, blunt cut cargo area and blunt cut console area	Inc.
T66	Wiring provision, for outside mirrors and cargo side mirrors	Inc.
6J7	Flasher system, headlamp and taillamp, DRL compatible with control wire	Inc.
5J9	Calibration, taillamp flasher, Red/White	Inc.
5LO	Calibration, taillamp flasher, Red/Red	Inc.

This document contains information considered Confidential between GM and its Clients uniquely. The information provided is not intended for public disclosure. Prices, specifications, and availability are subject to change without notice, and do not include certain fees, taxes and charges that may be required by law or vary by manufacturer or region. Performance figures are guidelines only, and actual performance may vary. Photos may not represent actual vehicles or exact configurations. Content based on report preparer's input is subject to the accuracy of the input provided.
Data Version: 26682. Data Updated: Oct 8, 2025 6:51:00 PM PDT.



Stingray Chevrolet

"Magic" Peter | 407-221-7600 | magicpeterfleet@gmail.com

Section 6, Item E.

Vehicle: [Fleet] 2026 Chevrolet Tahoe (CK10706) 4WD 4dr Commercial (✔ Complete)

ADDITIONAL EQUIPMENT - EXTERIOR

CODE	DESCRIPTION	MSRP
RNQ	Wheel, full-size spare, matching 20" (50.8 cm) steel wheel without center cap	Inc.
RAV	Tire, spare 275/55R20 all-season, blackwall, Firestone Firehawk Pursuit	Inc.
WUA	Fascia, front high-approach angle	Inc.
V53	Luggage rack side rails, delete	Inc.
TQ5	IntelliBeam, automatic high beam on/off	Inc.
—	Exterior ornamentation delete	Inc.
VK3	License plate front mounting package	\$0.00

ADDITIONAL EQUIPMENT - ENTERTAINMENT

CODE	DESCRIPTION	MSRP
UDA	OnStar deactivated (does not delete Bluetooth)	\$50.00

ADDITIONAL EQUIPMENT - INTERIOR

CODE	DESCRIPTION	MSRP
ATD	Seat delete, third row passenger	Inc.
D07	Console, floor	Inc.
VZ2	Speedometer calibration	Inc.
—	Instrumentation, analog	Inc.
AX2	Key, unique	Inc.
BTV	Remote start	Inc.
K34	Cruise control, electronic with set and resume speed	Inc.
—	Theft-deterrent system, vehicle, PASS-Key III	Inc.
—	Power supply, 50-amp, power supply, auxiliary battery, passenger compartment wiring harness	Inc.
—	Power supply, 100-amp, auxiliary battery, passenger compartment wiring harness	Inc.
—	Power supply, 120-amp, (4) 30-amp circuit, Primary battery, relay controlled, passenger compartment harness wiring	Inc.
DRZ	Rear Camera Mirror, inside rearview auto-dimming	Inc.
5J3	Calibration, Surveillance Mode interior lighting	Inc.
BCV	Lock control, driver side auto door lock disable	Inc.

This document contains information considered Confidential between GM and its Clients uniquely. The information provided is not intended for public disclosure. Prices, specifications, and availability are subject to change without notice, and do not include certain fees, taxes and charges that may be required by law or vary by manufacturer or region. Performance figures are guidelines only, and actual performance may vary. Photos may not represent actual vehicles or exact configurations. Content based on report preparer's input is subject to the accuracy of the input provided.
Data Version: 26682. Data Updated: Oct 8, 2025 6:51:00 PM PDT.



Stingray Chevrolet

"Magic" Peter | 407-221-7600 | magicpeterfleet@gmail.com

Section 6, Item E.

Vehicle: [Fleet] 2026 Chevrolet Tahoe (CK10706) 4WD 4dr Commercial (Complete)

ADDITIONAL EQUIPMENT - SAFETY-MECHANICAL

CODE	DESCRIPTION	MSRP
UKT	Front Pedestrian and Bicyclist Braking	Inc.
CTB	Intersection Automatic Emergency Braking	Inc.
UHY	Automatic Emergency Braking	Inc.

ADDITIONAL EQUIPMENT - SAFETY-INTERIOR

CODE	DESCRIPTION	MSRP
___	Seat belts, 3-point, all seating positions	Inc.
___	Active Hill Hold Assist	Inc.
UKI	Blind Zone Steering Assist	Inc.
UFB	Rear Cross Traffic Braking	Inc.
UOW	Side Bicyclist Alert	Inc.
UKM	Lane Keep Assist	Inc.
UD7	Rear Parking Assist	Inc.
UEU	Forward Collision Alert	Inc.

ADDITIONAL EQUIPMENT - OTHER

CODE	DESCRIPTION	MSRP
___	Protected idle	Inc.
Options Total		\$1,575.00

This document contains information considered Confidential between GM and its Clients uniquely. The information provided is not intended for public disclosure. Prices, specifications, and availability are subject to change without notice, and do not include certain fees, taxes and charges that may be required by law or vary by manufacturer or region. Performance figures are guidelines only, and actual performance may vary. Photos may not represent actual vehicles or exact configurations. Content based on report preparer's input is subject to the accuracy of the input provided.
Data Version: 26682. Data Updated: Oct 8, 2025 6:51:00 PM PDT.



RCM Utilities, LLC
1451 Pine Grove Road
Eustis, FL 32726
352-561-2990
billing@rcmutilities.com

Estimate 3136074
Estimate Date 8/8/2025

Section 6, Item F.

Billing Address

City of LaBelle
481 West Hickpochee Avenue
LaBelle, FL 33935 USA

Job Address

Labelle Valve Installs
481 West Hickpochee Avenue
LaBelle, FL 33935 USA

Description of work

Updated 11/12/25:
City of LaBelle Valve Installs as indicated below.

Service #	Description	Quantity	Your Price	Total
Job:Valve Replacement	Bridge Street Valve: #578 Excavate the 6-inch water main on Bridge Street. Install (1) 6-inch insertion valve. Install new valve can and lid. Abandon the old inoperable 6-inch valve by removing the existing valve can and lid. Backfill, compact excavation area and lay sod.	1.00	\$20,726.45	\$20,726.45
Job:Valve Replacement	Broward Ave & South Main Valve: #900 Excavate the 10-inch water main on Broward Ave and South Main Street. Install (1) 10-inch insertion valve. Install new valve can and lid. Abandon the old inoperable 10-inch valve by removing the existing valve can and lid. Backfill, compact excavation area, and lay sod.	1.00	\$29,454.95	\$29,454.95
Job:Valve Replacement	Hall St Valve: #905 Excavate the 8-inch water main on Hall Street. Install (1) 8-inch insertion valve. Install new valve can and lid. Abandon the old inoperable 8-inch valve by removing the existing valve can and lid. Backfill, compact excavation area, and lay sod.	1.00	\$21,702.80	\$21,702.80
Job:Valve Replacement	S. Main St/Lincoln Ave Valve: #586 Excavate the 12-inch water main on South Main Street and Lincoln Ave. Install (1) 12-inch insertion valve. Install new valve can and lid. Abandon the old inoperable 12-inch valve by removing the existing valve can and lid. Backfill, compact excavation area, and lay sod.	1.00	\$33,292.50	\$33,292.50
Job:Valve Replacement	S Main St Auto Zone Valve: #783 Excavate the 12-inch water main on S Main Street in front of the Auto Zone. Install (1) 12-inch insertion valve. Install new valve can and lid. Abandon the old inoperable 12-inch valve by removing the existing valve can and lid. Backfill, compact excavation area, and lay sod.	1.00	\$33,292.50	\$33,292.50
Job:Valve Replacement	Hickpochee Ave: Excavate the 12-inch water main on W Hickpochee Ave between Bridge Street and Main Street. Install (1) 12-inch insertion valve. Install new valve can and lid. Backfill, compact excavation area, replace sidewalk, and lay sod.	1.00	\$35,592.50	\$35,592.50
Job:Valve Replacement	Forrey Dr: Excavate the 6-inch water main on the South end of Forrey Drive. Install (1) 6-inch insertion valve. Install new valve can and lid. Backfill, compact excavation area, and lay sod.	1.00	\$20,726.45	\$20,726.45

**Sub-Total
Tax**

Section 6, Item F.

Total Due

\$194,788.15

Deposit/Downpayment

\$0.00

A service charge of 4% will be applied to all credit card purchases. For your convenience, customers may avoid this extra fee by paying with cash or a check. Payment is due within 30 days of the date of invoice. Thereafter, monthly finance charges of 1.5% or the maximum allowed by law, whichever is less, will be assessed on unpaid amounts.

****ESTIMATE IS VALID FOR 30 DAYS****

****ESTIMATE INCLUDES ALL APPLICABLE SALES TAXES.****

- DUE TO CURRENT MARKET CONDITIONS MATERIAL PRICING IS SUBJECT TO CHANGE. RCM HOLDS THE RIGHT TO REPRICE BASED ON DATE OF ORDER. DATE OF ORDER IS WHEN ALL STAMPED PLANS AND SUBMITTALS ARE RETURNED, NOT THE RELEASE OF PURCHASE ORDER OR SUB CONTRACT.

Force Majeure. Neither party shall be liable in damages nor have the right to terminate this Contract for any delay or default in performing hereunder if such delay or default is caused by conditions beyond their control including, but not limited to natural disasters, including but not limited to ground subsidence or upheaval, acts of God, Government restrictions (including the denial or cancellation of any permits, tax incentive, or other license or approvals), covid-19, labor shortage, material delays, wars, insurrections and/or any other cause beyond the reasonable control of the party whose performance is affected. Furthermore, neither party shall be liable for any failure or delay in performance under this Contract to the extent said failures or delays are proximately caused by those causes beyond that party's reasonable control and occurring without its fault or negligence, including, without limitation, failure of suppliers, subcontractors, and carriers, or any other party to substantially meet its performance obligations under this Contract. The party experiencing the difficulty shall give the other prompt written notice, with details following the occurrence of the cause relied upon. Dates by which performance obligations are scheduled to be met will be extended for a period equal to the time lost due to any delay so caused. Contractor's failure to perform any term or condition of this Contract because of conditions beyond its control mentioned herein or other conditions that cause delay, damage, or destruction of its work by others shall not be deemed a breach of this Contract.

Material Escalation. The Contract Price for this Project has been calculated based on the current prices for the component building materials. However, the market for these building materials is considered volatile and sudden price increases could occur. Contractor agrees to use its best efforts to obtain the lowest possible prices from available building material suppliers but should there be an increase in the prices of these materials that are purchased after execution of this Contract for use in this Project, then Owner or General Contractor agrees and shall pay the substantiated cost increase to Contractor. Any request or change order for payment of a cost increase shall state the increased cost, the building materials in question, and the source of supply, supported by invoices or bills of sale.

1. This proposal is an offer to enter into a contract, with the mutual promises contained herein constituting valuable and sufficient consideration. The execution of this proposal by the owner listed above (the "Owner") shall constitute acceptance of the offer and formation of contract (the "Contract") between the Owner (the "Owner") and RCM Utilities, LLC. The terms set forth herein, including those after the acceptance signature below and/or on subsequent pages, shall govern the Contract.
2. Warranty. The Contractor warrants all supplied materials and workmanship to be free of defects for a period of one year after installation. The Contractor warrants that materials and equipment furnished under the Contract will be new and good quality.
3. Payment. The Contractor will invoice the Owner in accordance with the schedule set forth above or, if no terms are set forth above, monthly for work performed during each calendar month. The Owner agrees that there shall be no retainage except as set forth in the schedule above. Payment is due within 30 days of the date of invoice. Thereafter, monthly finance charges of 1.5% or the maximum allowed by law, whichever is less, will be assessed on unpaid amounts.
4. Time. The Contractor shall achieve substantial completion of the work within a commercially reasonable time. At the Owner's request, the Contractor shall submit for information a construction schedule for the work, and the Contractor shall revise the schedule at appropriate intervals as required by the conditions of the work. Schedule information set forth above are estimates. The Contractor shall not be responsible for delays caused by circumstances outside the control of the Contractor.
5. Permits and Approvals. The Contractor shall secure and pay for the building permits, fees, licenses and inspections by government agencies necessary for proper execution and completion of the work. This responsibility is limited to building permits and, for the avoidance of doubt, does not extend to land use approvals, environmental permits, consumptive use permits, or other governmental approvals outside of building permits.
6. Contract Documents. Except as otherwise provided herein, the Owner shall furnish, at its expense, all necessary surveys, plans, drawings, approvals, easements, assignments, and changes required for the construction and use of the improvements. The Owner warrants the information, plans and specifications provided to the Contractor. The Contractor shall be entitled to rely on the plans and drawings supplied by the Owner; the Contractor warrants only that the work will conform to the design documents and shall have no responsibility or obligation arising out of design defects. The Contractor's warranties contained in this Contract exclude remedy for damage or defect caused by abuse, alterations to the work not executed by the Contractor, improper or insufficient maintenance, improper operation, or normal wear and tear.
7. Termination. The Contractor may terminate this Contract if the Owner fails to make payment as set forth herein and the failure continues for 10 days after notice, if the Contractor is unable to perform due to the failure of the owner to provide access to the site, necessary approvals, or its efforts to complete the work are frustrated by the actions or omissions of the Owner. In the event the Contractor terminates the Contract, it may recover payment for work executed, included reasonable overhead and profit, costs incurred by reason of such termination, and damages. No refund of payments made by the Owner shall be due as a result of termination under this section.
8. Governing Law; Venue; Attorney Fees. This Contract shall be governed by the laws of the state of Florida. Venue for any dispute arising in connection with this Contract shall lie exclusively in the court of appropriate jurisdiction in the county where the work is to be performed. The parties hereby irrevocably waive the right to a jury trial in connection with any matter related to or arising out of this contract or the work performed hereunder and consent to a bench trial in any such action. The prevailing party in any litigation shall be entitled to recover its reasonable attorneys' fees from the other party.
9. Assignment; Subcontractors. This Agreement may not be assigned without consent; provided, however that nothing herein shall limit the right of the Contractor to use subcontractors and contract labor in completion of the work. Notwithstanding the foregoing, the

Contract may be assigned by the Owner to a lender providing construction financing if the lender has assumed the Owner's obligations under the Contract.

Section 6, Item F.

10. Hazards. The Owner represents that, except as disclosed in writing, there is no hazardous condition, material or substance at the site of the work. The Owner shall indemnify and hold harmless the Contractor, its subcontractors, agents and employees from and against claims, damages, losses, and expense arising out of or resulting from performance of the work in the affected area if in fact, a hazardous condition, material or substance presents the risk of bodily injury or death and has not been rendered harmless, except to the extent that such damage, loss or expense is due to the fault or negligence of the party seeking indemnity. If, without negligence on the part of the Contractor, the Contractor is held liable by a government agency for the cost of remediation of a hazardous material or substance by reason of performing the work described herein, the Owner shall indemnify the Contractor for all cost and expenses thereby incurred.

11. Insurance; Beneficiaries. The Contractor shall maintain appropriate commercial general liability insurance and statutory worker's compensation insurance and will provide certificates of insurance upon the request of the Owner. The Owner shall be responsible for purchasing and maintaining the Owner's usual liability insurance and property insurance until the work is complete. This Contract has no third-party beneficiaries.

12. Consequential Damages. The Owner waives claims against the Contractor for consequential damages arising out of or relating to this Contract. This waiver includes damages incurred by Owner for rental expenses, for losses of use, income, profit, financing, business and reputation, and for loss of management or employee productivity or of the services of such persons. This waiver is applicable to damages due to termination.

13. Entire Agreement; Modifications. This Contract, together with the information, plans, and specifications provided to the Contractor, constitute the entire agreement. Any previous agreements and understanding between the parties regarding the subject matter of this Contract, whether oral or in writing, are superseded by the Contract. Any amendments, modifications, or change orders must be in writing. Any change orders require the agreement of the Contractor and shall include appropriate modifications to the contract price to include the Contractor's cost of labor, material, equipment, and reasonable overhead and profit.

14. ANY CLAIMS FOR CONSTRUCTION DEFECTS ARE SUBJECT TO THE NOTICE AND CURE PROVISIONS OF CHAPTER 558, FLORIDA STATUTES. 15. ACCORDING TO FLORIDA'S CONSTRUCTION LIEN LAW (SECTIONS 713.001-713.37, FLORIDA STATUTES), THOSE WHO WORK ON YOUR PROPERTY OR PROVIDE MATERIALS AND SERVICES AND ARE NOT PAID IN FULL HAVE A RIGHT TO ENFORCE THEIR CLAIM FOR PAYMENT AGAINST YOUR PROPERTY. THIS CLAIM IS KNOWN AS A CONSTRUCTION LIEN. IF YOUR CONTRACTOR OR A SUBCONTRACTOR FAILS TO PAY SUBCONTRACTORS, SUB-SUBCONTRACTORS, OR MATERIAL SUPPLIERS, THOSE PEOPLE WHO ARE OWED MONEY MAY LOOK TO YOUR PROPERTY FOR PAYMENT, EVEN IF YOU HAVE ALREADY PAID YOUR CONTRACTOR IN FULL. IF YOU FAIL TO PAY YOUR CONTRACTOR, YOUR CONTRACTOR MAY ALSO HAVE A LIEN ON YOUR PROPERTY. THIS MEANS IF A LIEN IS FILED YOUR PROPERTY COULD BE SOLD AGAINST YOUR WILL TO PAY FOR LABOR, MATERIALS, OR OTHER SERVICES THAT YOUR CONTRACTOR OR A SUBCONTRACTOR MAY HAVE FAILED TO PAY. TO PROTECT YOURSELF, YOU SHOULD STIPULATE IN THIS CONTRACT THAT BEFORE ANY PAYMENT IS MADE, YOUR CONTRACTOR IS REQUIRED TO PROVIDE YOU WITH A WRITTEN RELEASE OF LIEN FROM ANY PERSON OR COMPANY THAT HAS PROVIDED TO YOU A "NOTICE TO OWNER." FLORIDA'S CONSTRUCTION LIEN LAW IS COMPLEX, AND IT IS RECOMMENDED THAT YOU CONSULT AN ATTORNEY

Approved By: _____ Date: _____

Tree Removal Application (A)



DATE RECEIVED: 10/29/25
APPLICATION # 1511
CUSTOMER # FORWARD
INVOICE #: I2500508
SUPERINTENDANT APPROVED: Y (N)
COMMISSION APPROVAL DATE: NOV 7

Please select one:

- ☐ Single Family (1 Site) Administrative
☐ Single Family (1 Site) Public Hearing
☐ Commercial / All Other Administrative
☒ Commercial / All Other Public Hearing

1. APPLICANT: Dan-Nico Properties
(As Shown on Deed or Articles of Incorporation)
Name of Person Applying: Justyna Gale, Forward Planning & Design
Mailing Address: 19046 Bruce B. Downs Boulevard, #308
City: Tampa State: Florida Zip: 33647
Email: Justyna@fwdplanning.com Phone: (352) 514-6158

2. PROPERTY OWNER (IF DIFFERENT FROM APPLICANT-YOU MUST LIST ALL OWNERS-
PROVIDE A SEPARATE SHEET IF NECESSARY):
Owners Name: Dan-Nico Properties
Mailing Address: 424 NE 2nd Street
City: Boca Raton State: Florida Zip: 33432
Email: BHerbert@galloherbert.com Phone: (954)461-6625

3. SPECIFIC LOCATION OF SUBJECT PROPERTY AFFECTED BY THIS APPLICATION:
Address/Location: 2250 S State Road 29
City: Labelle State: Florida Zip: 33935
Tax Parcel I. D. #: 1 29 43 20 A00 0002.0200

4. SUMMARY OF APPLICANT’S REQUEST:
Applicant requests to move (7) seven significant Oaks on the property. The internal location
of the Oaks makes preservation impractical for development. All Significant Oaks near
the exterior of the site and in non -developed areas will be preserved and protected
during construction. The total tree DBH requested for removal is 188 inches.
Removing these (7) seven oaks allows the preservation of many other trees on the west side.

5. PLEASE PROVIDE THE FOLLOWING ITEMS TO:

MWills@citylabelle.com and KimBarselou@citylabelle.com or City Hall, 481 West Hickpochee Avenue, LaBelle, FL 33975

- ☒ **A. Completed Tree Removal Application Form**
- ☒ **B. Affidavit of Ownership (Notarized)**
- ☒ **C. Agent Authorization (Notarized):** The name of all parties having interest in the subject property and certification that the applicant is authorized to sign the application as owner or authorized agent.
- ☐ **D. Proof of Ownership:** A copy of the tax bill or a printout from the Property Appraisers office is required with a legal description.
- ☒ **E. Narrative & Mitigation Statement:** Written narrative explaining the existing conditions (number, location, species and size of existing significant oak trees); why the significant oak trees prevent reasonable development of the property; what alternatives have been considered by the applicant; description of method of tree removal or relocation (where applicable); and description of mitigation plan (number, location, species and size of oak trees proposed for planting), and details of off-site mitigation planting location (where applicable).
- ☒ **F. Existing Conditions Exhibit/Drawing:** Drawing demonstrating the property boundary and location and type of significant oak tree(s) proposed for removal on 8 ½" x 11" paper (minimum size) with legible text showing all data pertinent to the application including the following:
1. Date of drawing
 2. Scale
 3. North arrow
 4. Name of person or firm preparing the plan
 5. Property boundary
 6. Trees proposed for removal, size and name of species
 7. Existing physical improvements including but not limited to existing building, access points, driveways, parking areas, easements (utility, drainage, electric).
- ☒ **G. Proposed Conditions Exhibit/Drawing:** Drawing demonstrating the property boundary and location and type of proposed mitigation tree planting on 8 ½" x 11" paper (minimum size) with legible text showing all data pertinent to the proposed mitigation, including at least the following:
1. Date of drawing
 2. Scale
 3. North arrow
 4. Name of person or firm preparing the plan
 5. Property boundary
 6. Trees proposed for removal, size and name of species
 7. Existing physical improvements including but not limited to existing building, access points, driveways, parking areas, easements (utility, drainage, electric).

- N/A H. Verification Letters (where applicable):** Letter from a certified arborist, licensed landscape architect in the State of Florida, or other suitable expert verifying health of trees (only required where removal is requested due to failing health of the tree) AND/OR letter from certified engineer in the State of Florida verifying the tree proposed for removal is causing structural damage to existing structures (only required where applicable).
- X I. Certified Boundary and Tree Survey:** Required for commercial public hearing applications. May be required for single family public hearing applications.
- J. Additional Data:** Any additional data, materials or information deemed necessary by the Superintendent of Public Works or the city commission to make a determination. If additional documents are required, they shall become a part of this permit.
- X K. Application Fee:** Check made payable to “City of LaBelle”. See the fee schedule on our website. [City of LaBelle](#)

ATTENTION:

This application must be completed (please type or legibly print) and submitted, with all requirements herein, to the Superintendent of Public Works, at City Hall 481 W. Hickpochee Ave., LaBelle, FL 33975 or via email to: mwills@citylabelle.com and kimbarselou@citylabelle.com. This application must be signed by the owner or the designated agent. If the applicant is different than the owner of the subject property, then an agent affidavit in a form approved by the City of LaBelle is required from the owner of the property. The agent affidavit must be completely filled out and submitted with this application. If the property is in multiple ownerships, then all owners or their designated agent(s) must sign this application. All owners of property that will be affected by this application must either sign this application or fill out an agent affidavit.

The applicant is fully responsible for researching and knowing any and all laws which may be applicable and affect the outcome of any decision on the applicant’s request. The City of LaBelle assumes no responsibility or liability relating to the failure of research and know all applicable laws including, but not limited to, state, federal and city laws, codes land development regulations or the adopted comprehensive plan. The city strongly recommends that all applicants consider consulting an attorney regarding their application.

Other Permits: Copies of all necessary state and federal permits must be submitted prior to the commencement of construction work on the site. The City of LaBelle is not responsible for determining applicable State and Federal permits.

PUPLIC HEARING APPLICATION – CITY COMMISSION ACTION:

If this application cannot be approved by administrative review, by the Superintendent of Public Works or their assignees, it will be forwarded to the City Planner to go before the city commission through the Public Hearing process for review. This process can take approximately two to three months from start to finish. The applicant will be responsible for all expenses for advertisements and outside consultants.

AFFIDAVIT OF OWNERSHIP (B)

I, BRIAN P. HERBERT certify that I am the owner or authorized representative of the property described herein, and that all answers to the questions in this application and any site plans, data or other supplementary matter attached to and made a part of this application, are honest and true to the best of my knowledge and belief.

[Signature] 3/12/25
Signature of Authorized Agent Date

BRIAN P. HERBERT, MANAGER
Print or Type Name of Person Signing Above

DAN-NICO PROPERTIES, LLC
Name of Owner/Agent Entity if a Corporation, L.L.C., Partnership, or Trust

MANAGER
Representative capacity of person signing Affidavit: President or Vice President of Corporation, Managing Member of L.L.C., General Partner or Trustee

STATE OF Florida COUNTY OF Broward

The foregoing instrument was sworn to (or affirmed) and subscribed before me on 3/12/25 by Brian P. Herbert,
Date Name of Person Providing Oath or Affirmation

who is personally known to me or who has produced _____
as identification. Type of Identification

NOTARY PUBLIC STAMP/SEAL:



[Signature]
Signature of Notary Public
HEATHER CHABOT
Printed Name of Notary Public
6-26-27
Commission Expires

AGENT AUTHORIZATION (C)

The undersigned to hereby swear or affirm that they are the fee simple title holders and owners of the record of property commonly known as RESIDENCES AT GRAND OAKS and legally described in Exhibit "D" attached hereto.

We hereby designate Robert Haught and Justyna Gale, Forward Planning & Design as the legal representative of the property in the course of seeking approval of this application. This representative will remain the only entity to authorize development activity until such time as a new or amended authorization is delivered to the City of LaBelle.

[Signature] 3/12/25
Signature of Authorized Agent Date
BRIAN P. HERBERT, MANAGER
Print or Type Name of Person Signing Above
DAN. NILO PROPERTIES, LLC
Name of Owner/Agent Entity if a Corporation, L.L.C., Partnership, or Trust
MANAGER
Representative Capacity of Person signing Affidavit: President or Vice President of Corporation, Managing Member of L.L.C., General Partner or Trustee

STATE OF Florida COUNTY OF Broward

The foregoing instrument was sworn to (or affirmed) and subscribed before me on 3/12/25 by Brian P. Herbert,
Date Name of Person Providing Oath or Affirmation

who is personally known to me or who has produced _____
as identification. Type of Identification

NOTARY PUBLIC STAMP/SEAL:



[Signature]
Signature of Notary Public
HEATHER CHABOT
Printed Name of Notary Public
6-26-27
Commission Expires

SITE DATA

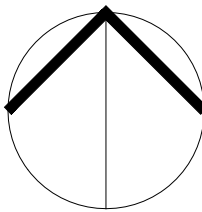
TOTAL SITE = 26.12AC

SIGNIFICANT OAK

PLAN DISCLAIMER

THIS PLAN IS BASED ON A SURVEY PROVIDED
BY BSM & ASSOCIATES , DATED OCT 8, 2024

PREPARED BY



Forward
Planning & Design



SCALE:

DATE: 10/14/25

TREE TABLE			TREE TABLE			TREE TABLE			TREE TABLE			TREE TABLE			TREE TABLE			TREE TABLE			TREE TABLE			TREE TABLE			TREE TABLE			TREE TABLE			TREE TABLE			TREE TABLE		
POINT#	DESCRIPTION	TREE#	POINT#	DESCRIPTION	TREE#	POINT#	DESCRIPTION	TREE#	POINT#	DESCRIPTION	TREE#	POINT#	DESCRIPTION	TREE#	POINT#	DESCRIPTION	TREE#	POINT#	DESCRIPTION	TREE#	POINT#	DESCRIPTION	TREE#	POINT#	DESCRIPTION	TREE#	POINT#	DESCRIPTION	TREE#	POINT#	DESCRIPTION	TREE#	POINT#	DESCRIPTION	TREE#			
10000	14' Palm	10036	16' Pine	10072	12' Palm	10108	12' Palm	10144	12' Palm	10180	12' Palm	10216	16' Pine	10252	14' Palm	10288	16' Pine	10324	14' Palm	10361	20' Pine	10397	12' Pine	10433	14' Palm	10469	12' Palm	10505	12' Palm	10541	12' Palm	10577	12' Palm	10613	12' Palm			
10001	12' Palm	10037	12' Palm	10073	16' Palm	10109	12' Palm	10145	14' Palm	10181	12' Palm	10217	12' Palm	10253	14' Palm	10289	12' Palm	10325	12' Palm	10362	12' Palm	10398	14' Palm	10434	12' Palm	10470	14' Palm	10506	12' Palm	10542	12' Palm	10578	12' Palm	10614	12' Palm			
10002	16' Pine	10038	12' Palm	10074	14' Palm	10110	16' Palm	10146	14' Palm	10182	12' Palm	10218	12' Palm	10254	12' Palm	10290	12' Palm	10326	14' Palm	10363	16' Pine	10399	16' Palm	10435	12' Pine	10471	14' Palm	10507	16' Pine	10543	12' Palm	10579	16' Pine	10615	12' Palm			
10003	12' Pine	10039	12' Palm	10075	12' Palm	10111	12' Palm	10147	14' Palm	10183	12' Pine	10219	14' Palm	10255	12' Palm	10291	12' Palm	10327	18' Oak	10364	12' Pine	10400	16' Pine	10436	12' Palm	10472	14' Palm	10508	20' Oak	10544	12' Palm	10580	20' Oak	10616	12' Palm			
10004	14' Palm	10040	12' Palm	10076	12' Palm	10112	12' Palm	10148	14' Palm	10184	12' Palm	10220	14' Palm	10256	14' Palm	10292	12' Palm	10328	22' Oak	10365	14' Palm	10401	18' Pine	10437	12' Palm	10473	12' Palm	10509	14' Palm	10545	12' Palm	10581	12' Palm					
10005	12' Palm	10041	12' Palm	10077	12' Pine	10113	16' Pine	10149	12' Palm	10185	12' Palm	10221	18' Pine	10257	18' Pine	10293	12' Palm	10329	12' Palm	10366	14' Palm	10402	14' Palm	10438	12' Palm	10474	12' Palm	10510	18' Oak	10546	12' Palm	10582	12' Palm					
10006	16' Pine	10042	12' Palm	10078	12' Pine	10114	22' Pine	10150	14' Palm	10186	14' Palm	10222	14' Palm	10258	12' Palm	10294	16' Pine	10330	14' Palm	10367	14' Palm	10403	14' Palm	10439	12' Palm	10475	12' Palm	10511	18' Oak	10547	12' Palm	10583	12' Palm					
10007	16' Pine	10043	20' Pine	10079	14' Pine	10115	22' Pine	10151	14' Pine	10187	14' Palm	10223	14' Palm	10259	18' Pine	10295	12' Pine	10331	16' Palm	10368	14' Palm	10404	14' Pine	10440	14' Pine	10476	12' Palm	10512	18' Oak	10548	12' Palm	10584	12' Palm					
10008	16' Pine	10044	14' Palm	10080	12' Palm	10116	12' Palm	10152	14' Palm	10188	14' Pine	10224	14' Pine	10260	12' Palm	10296	12' Palm	10332	12' Palm	10369	20' Pine	10405	12' Palm	10441	12' Palm	10477	12' Palm	10513	22' Pine	10549	12' Palm	10585	12' Palm					
10009	12' Pine	10045	14' Palm	10081	12' Palm	10117	12' Pine	10153	12' Palm	10189	14' Pine	10225	16' Palm	10261	14' Palm	10297	14' Pine	10333	16' Pine	10370	12' Pine	10406	14' Palm	10442	22' Pine	10478	12' Palm	10514	12' Palm	10550	12' Palm	10586	12' Palm					
10010	20' Pine	10046	12' Palm	10082	12' Palm	10118	14' Palm	10154	12' Pine	10190	14' Palm	10226	12' Palm	10262	12' Palm	10298	16' Pine	10334	16' Pine	10371	12' Pine	10407	20' Palm	10443	24' Pine	10479	12' Palm	10515	12' Palm	10551	12' Palm	10587	12' Palm					
10011	12' Palm	10047	20' Pine	10083	12' Palm	10119	12' Palm	10155	12' Palm	10191	14' Palm	10227	12' Palm	10263	16' Pine	10299	12' Palm	10335	12' Pine	10372	14' Pine	10408	14' Palm	10444	20' Pine	10480	12' Palm	10516	12' Palm	10552	12' Palm	10588	12' Palm					
10012	18' Pine	10048	14' Pine	10084	12' Palm	10120	20' Pine	10156	20' Oak	10192	14' Palm	10228	12' Pine	10264	14' Palm	10300	12' Palm	10336	12' Palm	10373	12' Pine	10409	14' Palm	10445	18' Pine	10481	12' Palm	10517	12' Palm	10553	12' Palm	10589	12' Palm					
10013	16' Pine	10049	20' Pine	10085	12' Palm	10121	20' Palm	10157	14' Palm	10193	14' Palm	10229	14' Pine	10265	14' Palm	10301	12' Pine	10337	24' Pine	10374	14' Palm	10410	14' Palm	10446	16' Pine	10482	12' Palm	10518	12' Palm	10554	12' Palm	10590	12' Palm					
10014	18' Pine	10050	20' Pine	10086	12' Palm	10122	16' Palm	10158	17' Palm	10194	14' Palm	10230	12' Palm	10266	16' Pine	10302	12' Palm	10338	12' Palm	10375	14' Palm	10411	16' Palm	10447	16' Palm	10483	12' Palm	10519	12' Palm	10555	12' Palm	10591	12' Palm					
10015	14' Pine	10051	40' Pine	10087	12' Palm	10123	12' Palm	10159	14' Palm	10195	16' Pine	10231	14' Palm	10267	12' Palm	10303	14' Palm	10339	14' Palm	10376	14' Palm	10412	16' Palm	10448	20' Pine	10484	12' Palm	10520	12' Palm	10556	12' Palm	10592	12' Palm					
10016	14' Pine	10052	14' Palm	10088	12' Palm	10124	14' Palm	10160	14' Palm	10196	12' Pine	10232	14' Palm	10268	14' Palm	10304	16' Pine	10340	14' Palm	10377	14' Palm	10413	14' Palm	10449	12' Pine	10485	12' Palm	10521	12' Palm	10557	12' Palm	10593	12' Palm					
10017	12' Palm	10053	40' Oak	10089	12' Palm	10125	14' Palm	10161	12' Palm	10197	14' Palm	10233	12' Palm	10269	14' Palm	10305	12' Palm	10341	12' Pine	10378	12' Palm	10414	14' Palm	10450	14' Palm	10486	12' Palm	10522	12' Palm	10558	12' Palm	10594	12' Palm					
10018	12' Palm	10054	12' Palm	10090	14' Palm	10126	14' Palm	10162	14' Pine	10198	14' Pine	10234	14' Palm	10270	12' Palm	10306	12' Palm	10342	12' Palm	10379	14' Palm	10415	14' Palm	10451	14' Palm	10487	12' Palm	10523	12' Palm	10559	12' Palm	10595	12' Palm					
10019	14' Palm	10055	16' Palm	10091	14' Pine	10127	14' Palm	10163	18' Pine	10199	16' Palm	10235	12' Pine	10271	16' Pine	10307	12' Palm	10343	16' Palm	10380	16' Palm	10416	14' Palm	10452	20' Pine	10488	12' Palm	10524	12' Palm	10560	12' Palm	10596	12' Palm					
10020	14' Palm	10056	16' Palm	10092	12' Palm	10128	12' Palm	10164	14' Palm	10200	12' Palm	10236	12' Palm	10272	18' Pine	10308	12' Palm	10344	14' Palm	10381	12' Palm	10417	14' Palm	10453	16' Pine	10489	12' Palm	10525	12' Palm	10561	12' Palm	10597	12' Palm					
10021	20' Pine	10057	20' Palm	10093	12' Palm	10129	12' Palm	10165	14' Palm	10201	12' Palm	10237	12' Palm	10273	16' Pine	10309	14' Palm	10345	14' Palm	10382	12' Palm	10418	12' Palm	10454	12' Palm	10490	12' Palm	10526	12' Palm	10562	12' Palm	10598	12' Palm					
10022	16' Palm	10058	12' Palm	10094	16' Palm	10130	14' Palm	10166	14' Palm	10202	20' Palm	10238	12' Palm	10274	14' Palm	10310	12' Palm	10346	14' Palm	10383	14' Palm	10419	20' Pine	10455	12' Palm	10491	12' Palm	10527	12' Palm	10563	12' Palm	10599	12' Palm					
10023	12' Palm	10059	14' Pine	10095	12' Palm	10131	14' Palm	10167	14' Pine	10203	12' Palm	10239	14' Palm	10275	12' Palm	10311	12' Palm	10347	14' Palm	10384	14' Palm	10420	14' Palm	10456	12' Palm	10492	12' Palm	10528	12' Palm	10564	12' Palm	10600	12' Palm					
10024	16' Pine	10060	18' Pine	10096	14' Pine	10132	16' Palm	10168	14' Palm	10204	12' Palm	10240	14' Palm	10276	12' Palm	10312	12' Palm	10348	12' Pine	10385	16' Palm	10421	14' Palm	10457	12' Palm	10493	12' Palm	10529	12' Palm	10565	12' Palm	10601	12' Palm					
10025	20' Pine	10061	40' Oak	10097	12' Palm	10133	16' Pine	10169	14' Palm	10205	18' Oak	10241	12' Pine	10277	14' Palm	10313	14' Palm	10349	20' Pine	10386	14' Palm	10422	14' Palm	10458	12' Palm	10494	12' Palm	10530	12' Palm	10566	12' Palm	10602	12' Palm					
10026	12' Pine	10062	16' Oak	10098	12' Palm	10134	12' Palm	10170	12' Palm	10206	12' Palm	10242	14' Palm	10278	14' Palm	10314	14' Palm	10350	14' Palm	10387	12' Palm	10423	14' Palm	10459	12' Palm	10495	12' Palm	10531	12' Palm	10567	12' Palm	10603	12' Palm					
10027	14' Palm	10063	14' Palm	10099	14' Palm	10135	14' Palm	10171	16' Pine	10207	12' Palm	10243	12' Palm	10279	14' Palm	10315	14' Palm	10351	14' Palm	10388	14' Palm	10424	16' Pine	10460	12' Palm	10496	12' Palm	10532	12' Palm	10568	12' Palm	10604	12' Palm					
10028	14' Pine	10064	24' Pine	10100	14' Palm	10136	12' Palm	10172	14' Palm	10208	16' Palm	10244	12' Palm	10280	12' Palm	10316	14' Palm	10352	14' Palm	10389	14' Palm	10425	14' Palm	10461	12' Palm	10497	12' Palm	10533	12' Palm	10569	12' Palm	10605	12' Palm					
10029	16' Pine	10065	12' Palm	10101	12' Palm	10137	20' Pine	10173	12' Palm	10209	12' Palm	10245	16' Pine	10281	12' Pine	10317	12' Palm	10353	20' Pine	10390	24' Pine	10426	14' Palm	10462	12' Palm	10498	12' Palm	10534	12' Palm	10570	12' Palm	10606	12' Palm					
10030	14' Palm	10066	14' Pine	10102	12' Palm	10138	12' Palm	10174	12' Palm	10210	12' Palm	10246	14' Palm	10282	14' Palm	10318	14' Palm	10354	14' Palm	10391	12' Palm	10427	14' Palm	10463	12' Palm	10499	12' Palm	10535	12' Palm	10571	12' Palm	10607	12' Palm					
10031	20' Pine	10067	18' Pine	10103	16' Palm	10139	12' Palm	10175	14' Palm	10211	12' Palm	10247	16' Palm	10283	12' Pine	10319	16' Palm	10355	14' Palm	10392	14' Palm	10428	12' Pine	10464	12' Palm	10500	12' Pine	10536	12' Pine	10572	12' Pine	10608	12' Pine					
10032	18' Pine	10068	16' Palm	10104	12' Pine	10140	14' Palm	10176	20' Pine	10212	14' Palm	10248	22' Oak	10284	14' Palm	10320	14' Palm	10356	12' Pine	10393	12' Pine	10429	14' Palm	10465	12' Pine	10501	12' Pine	10537	12' Pine	10573	12' Pine	10609	12' Pine					
10033	16' Pine	10069	12' Palm	10105	14' Palm	10141	18' Pine	10177	12' Palm	10213	12' Palm	10249	16' Pine	10285	16' Pine	10321	12' Pine	10357	14' Palm	10394	14' Palm	10430	14' Palm	10466	12' Palm	10502	12' Pine	10538	12' Pine	10574	12' Pine	10610	12' Pine					
10034	16' Palm	10070	18' Pine	10106	12' Palm	10142	12' Palm	10178	16' Pine	10214	12' Palm	10250	12' Pine	10286	12' Palm	10322	14' Palm	10358	12' Pine	10395	12' Pine	10431	14' Palm	10467	12' Palm	10503	12' Pine	10539	12' Pine	10575	12' Pine	10611	12' Pine					
10035	16' Palm	10071	22' Pine	10107	12' Palm	10143	12' Palm	10179	12' Pine	10215	12' Palm	10251	14' Palm	10287	14' Palm	10323	14' Palm	10359	12' Pine	10396	16' Palm	10432	12' Palm	10468	12' Palm	10504	12' Pine	10540	12' Palm	10576	12' Palm	10612	12' Palm					

Significant Tree Removal Narrative.

Currently, this project site is undeveloped and contains no improvements. The Owner is attempting to develop it into a mixed-use development with multi-family and retail uses

There are 16 Significant Oak trees currently on the Project site. The Owner requests the removal of (7) six of the exterior trees. The remaining (9) significant oaks will remain and be protected during construction.

The Owner has attempted several times to redesign the site to reduce the number of significant Oaks to be removed. However, due to the Oak’s internal location to the site, the elevation differences, and the effect of vehicular circulation, this was shown to be impractical. The redesign of the site did allow the largest tree on the site to be remain, a 48” oak.

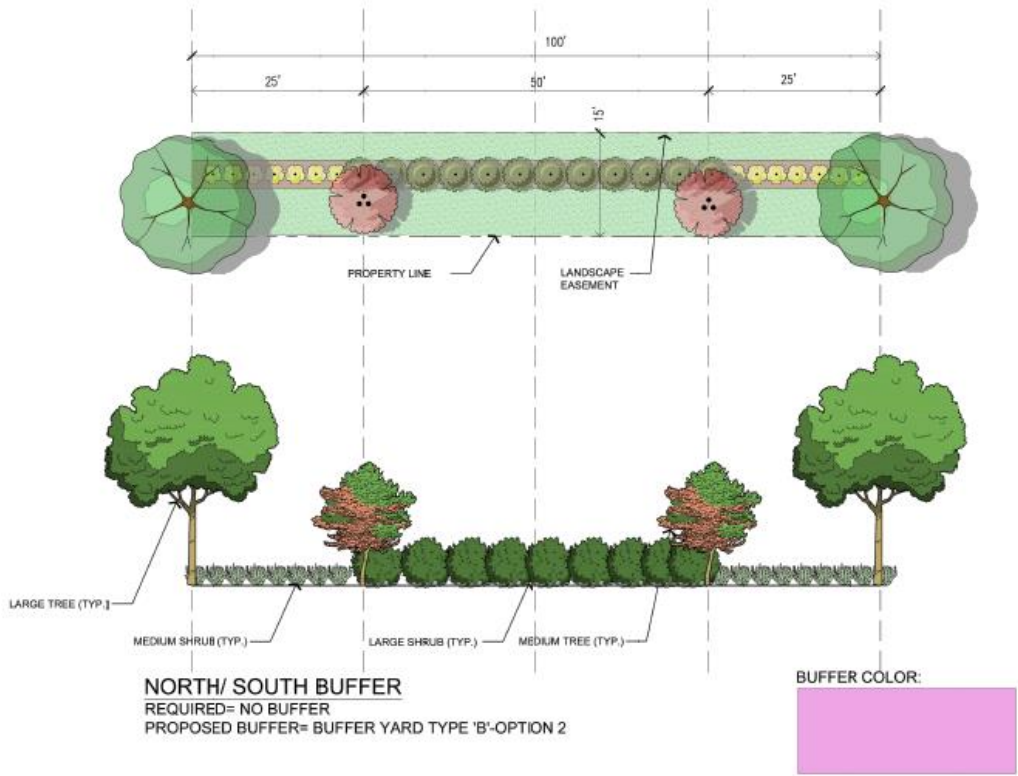
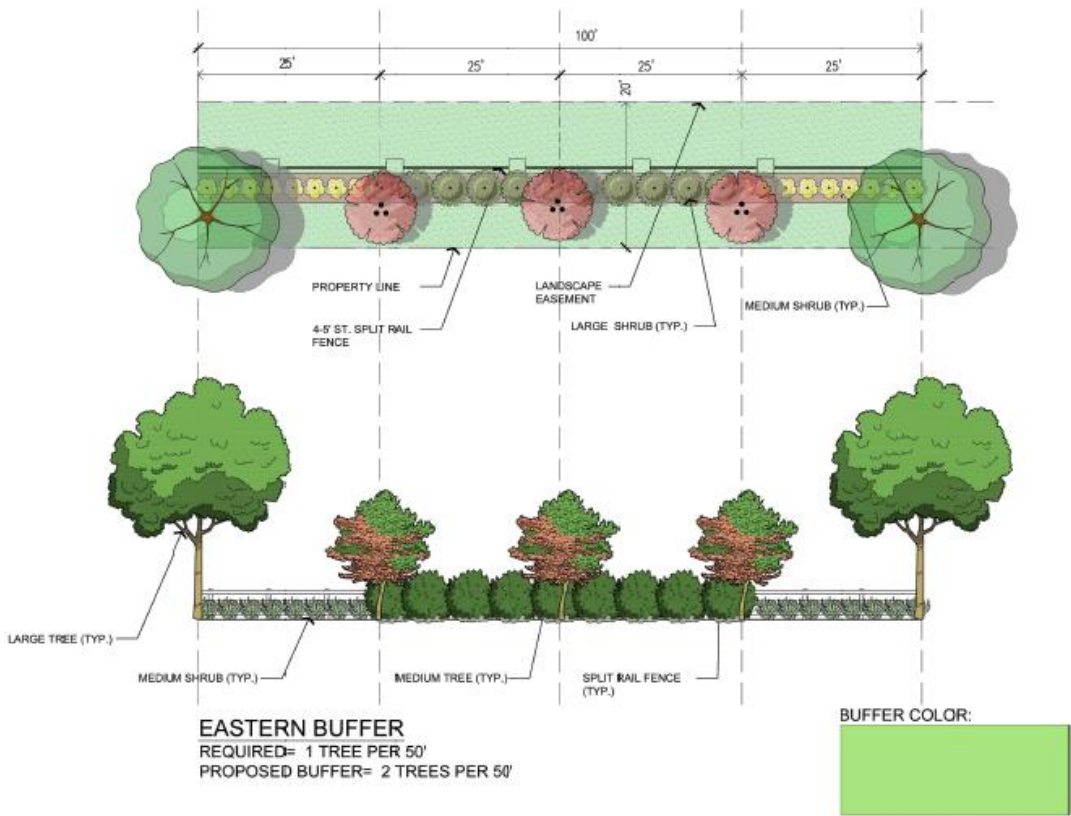
The following trees are proposed for removal. The numbers are shown on the Existing and proposed condition exhibits.

Tree #	Species	DBH
30000	Oak	36”
30013	Oak	32”
30019	Oak	34”
30031	Oak	32”
30032	Oak	16”
30056	Oak	26”
30059	Oak	18”

Mitigation for removal of Significant Oak: The proposed landscape will exceed what is required by code, to help compensate for the trees being removed.

Northern and Southern Property line: No buffer is required by code. The owner proposes installing a Type B- Option 2 buffer.

Eastern Property Line (Main St.): 1 tree per 50 LF is required by code. The Owner proposes to install 2 trees for every 50 LF



TITLE

THE RESIDENCE OF
GRAND OAKS
MULTI-FAMILY/ RETAIL
SIGNIFICANT OAKS
PROPOSED CONDITION

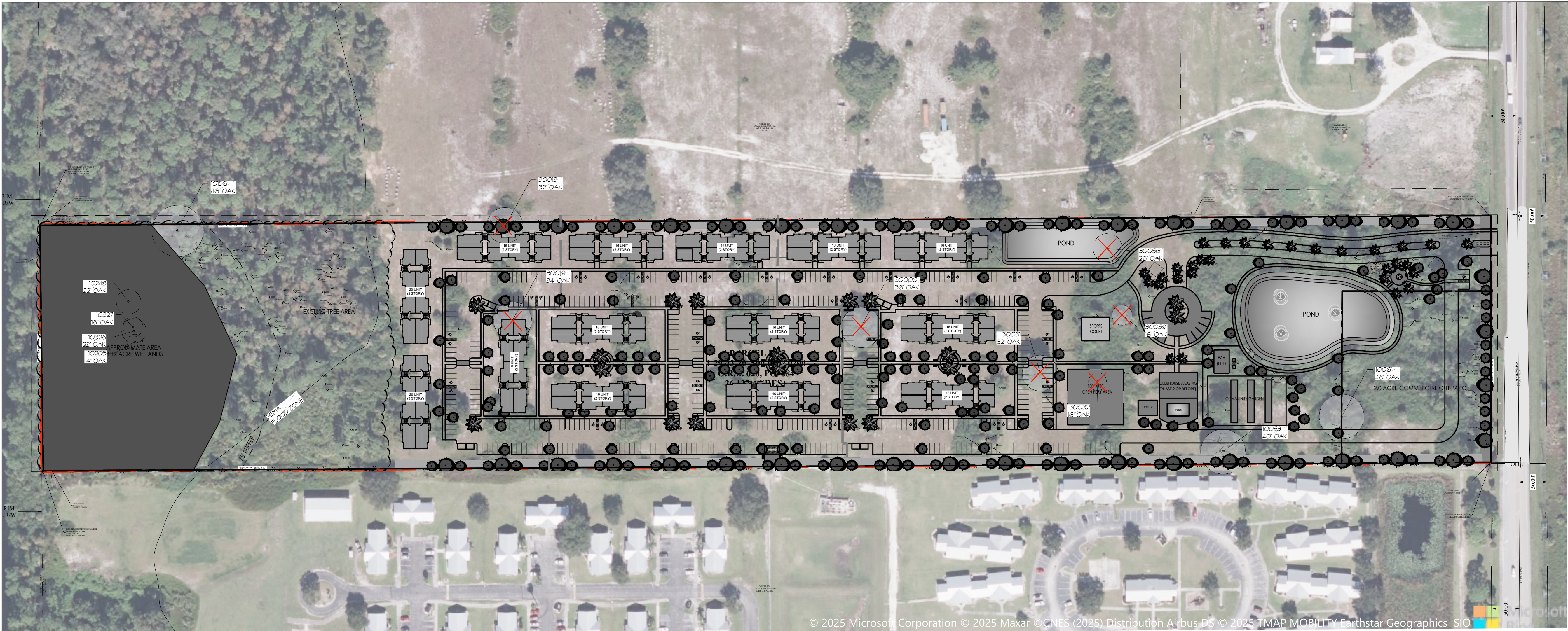
LOCATION

LABELLE, FLORIDA

PREPARED FOR

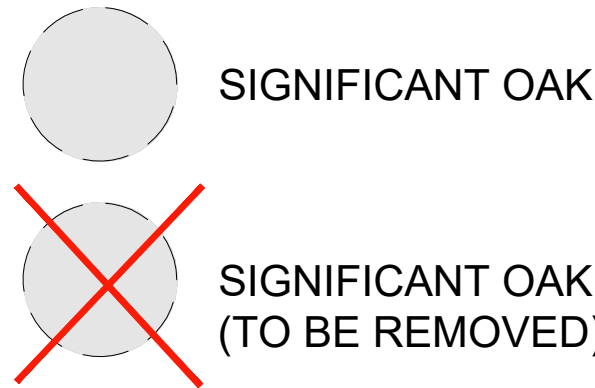
SITE DATA

TOTAL SITE = 26.12AC



© 2025 Microsoft Corporation © 2025 Maxar ©CNES (2025) Distribution Airbus DS © 2025 TMAP MOBILITY Earthstar Geographics SIO

LEGEND

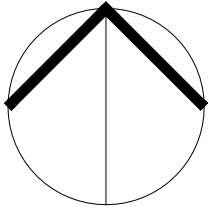


TREE TABLE		TREE TABLE		TREE TABLE		TREE TABLE		TREE TABLE		TREE TABLE		TREE TABLE		TREE TABLE		TREE TABLE		TREE TABLE		TREE TABLE		TREE TABLE		TREE TABLE		TREE TABLE		TREE TABLE	
POINT #	DESCRIPTION	POINT #	DESCRIPTION	POINT #	DESCRIPTION	POINT #	DESCRIPTION	POINT #	DESCRIPTION	POINT #	DESCRIPTION	POINT #	DESCRIPTION	POINT #	DESCRIPTION	POINT #	DESCRIPTION	POINT #	DESCRIPTION	POINT #	DESCRIPTION	POINT #	DESCRIPTION	POINT #	DESCRIPTION	POINT #	DESCRIPTION	POINT #	DESCRIPTION
10000	14' Palm	10036	16' Pine	10072	12' Palm	10108	12' Palm	10144	12' Palm	10180	12' Palm	10216	16' Pine	10252	14' Palm	10288	16' Pine	10324	14' Palm	10361	20' Pine	10397	12' Pine	10433	14' Palm	10469	14' Pine	10505	12' Palm
10001	12' Palm	10037	12' Palm	10073	16' Pine	10109	12' Pine	10145	12' Palm	10181	12' Palm	10217	12' Palm	10253	14' Palm	10289	12' Palm	10325	12' Palm	10362	14' Pine	10398	14' Pine	10434	12' Palm	10470	14' Pine	10506	12' Palm
10002	16' Pine	10038	12' Palm	10074	12' Palm	10110	16' Palm	10146	14' Palm	10182	12' Palm	10218	12' Palm	10254	12' Palm	10290	12' Palm	10326	14' Pine	10363	16' Pine	10399	16' Palm	10435	12' Pine	10471	14' Pine	10507	12' Palm
10003	12' Pine	10039	12' Palm	10075	12' Palm	10111	12' Palm	10147	14' Palm	10183	12' Pine	10219	14' Palm	10255	12' Palm	10291	12' Palm	10327	18' Oak	10364	12' Pine	10400	16' Pine	10436	12' Palm	10472	14' Palm	10508	12' Palm
10004	14' Pine	10040	12' Palm	10076	12' Palm	10112	12' Palm	10148	16' Pine	10184	12' Pine	10220	14' Pine	10256	12' Palm	10292	14' Palm	10328	22' Oak	10365	14' Palm	10401	18' Pine	10437	12' Palm	10473	14' Palm	10509	14' Palm
10005	12' Palm	10041	12' Palm	10077	12' Palm	10113	16' Pine	10149	12' Palm	10185	12' Palm	10221	18' Pine	10257	16' Pine	10293	16' Palm	10329	12' Palm	10366	14' Palm	10402	14' Palm	10438	12' Palm	10474	14' Pine	10510	14' Palm
10006	16' Pine	10042	12' Palm	10078	12' Pine	10114	22' Pine	10150	14' Palm	10186	14' Pine	10222	14' Palm	10258	12' Palm	10294	18' Pine	10330	14' Palm	10367	14' Palm	10403	14' Palm	10439	12' Palm	10475	14' Pine	10511	14' Palm
10007	16' Pine	10043	20' Pine	10079	14' Pine	10115	22' Pine	10151	14' Pine	10187	14' Palm	10223	14' Palm	10259	18' Pine	10295	12' Pine	10331	16' Palm	10368	14' Palm	10404	14' Pine	10440	12' Palm	10476	14' Pine	10512	12' Palm
10008	16' Pine	10044	14' Palm	10080	12' Palm	10116	12' Pine	10152	14' Pine	10188	14' Pine	10224	14' Pine	10260	16' Pine	10296	12' Palm	10332	12' Palm	10369	20' Pine	10405	12' Pine	10441	12' Palm	10477	12' Palm	10513	12' Palm
10009	12' Pine	10045	14' Palm	10081	12' Palm	10117	12' Pine	10153	12' Palm	10189	14' Pine	10225	16' Palm	10261	14' Palm	10297	14' Pine	10333	16' Pine	10370	12' Pine	10406	14' Palm	10442	22' Pine	10478	12' Palm	10514	12' Palm
10010	20' Pine	10046	12' Palm	10082	12' Palm	10118	14' Pine	10154	12' Palm	10190	14' Palm	10226	12' Palm	10262	12' Palm	10298	16' Pine	10334	16' Pine	10371	12' Pine	10407	20' Pine	10443	24' Pine	10479	12' Palm	10515	12' Palm
10011	12' Palm	10047	20' Pine	10083	12' Palm	10119	12' Palm	10155	12' Palm	10191	14' Palm	10227	12' Palm	10263	16' Pine	10299	12' Palm	10335	12' Pine	10372	14' Pine	10408	14' Palm	10444	20' Pine	10480	12' Palm	10516	12' Palm
10012	16' Pine	10048	18' Pine	10084	12' Palm	10120	20' Pine	10156	40' Oak	10192	14' Palm	10228	14' Palm	10264	14' Palm	10300	12' Pine	10336	12' Palm	10373	12' Palm	10409	14' Pine	10445	18' Pine	10481	12' Palm	10517	12' Palm
10013	12' Palm	10049	20' Pine	10085	20' Pine	10121	14' Palm	10157	20' Pine	10193	12' Palm	10229	12' Palm	10265	14' Palm	10301	12' Pine	10337	24' Pine	10374	14' Palm	10410	14' Palm	10446	16' Pine	10482	12' Palm	10518	12' Palm
10014	18' Pine	10050	20' Pine	10086	12' Palm	10122	16' Palm	10158	12' Palm	10194	12' Pine	10230	14' Palm	10266	16' Pine	10302	12' Pine	10338	12' Palm	10375	12' Palm	10411	16' Palm	10447	20' Pine	10483	12' Palm	10519	12' Palm
10015	14' Pine	10051	40' Pine	10087	12' Palm	10123	12' Palm	10159	14' Palm	10195	16' Pine	10231	14' Palm	10267	12' Palm	10303	14' Palm	10339	14' Palm	10376	14' Palm	10412	14' Pine	10448	20' Pine	10484	12' Palm	10520	12' Palm
10016	14' Pine	10052	14' Palm	10088	12' Palm	10124	14' Palm	10160	14' Palm	10196	12' Pine	10232	14' Palm	10268	14' Palm	10304	16' Pine	10340	14' Palm	10377	14' Palm	10413	14' Palm	10449	12' Pine	10485	12' Palm	10521	12' Palm
10017	12' Palm	10053	40' Oak	10089	12' Palm	10125	14' Palm	10161	10' Pine	10197	14' Palm	10233	12' Palm	10269	14' Palm	10305	14' Palm	10341	12' Pine	10378	12' Palm	10414	14' Pine	10451	24' Pine	10486	12' Palm	10522	12' Palm
10018	12' Palm	10054	12' Palm	10090	14' Palm	10126	14' Palm	10162	14' Pine	10198	14' Pine	10234	14' Palm	10270	12' Palm	10306	12' Pine	10342	12' Palm	10379	14' Palm	10415	14' Palm	10452	20' Pine	10487	12' Palm	10523	12' Palm
10019	14' Palm	10055	16' Palm	10091	14' Pine	10127	14' Palm	10163	18' Pine	10199	16' Palm	10235	12' Pine	10271	16' Pine	10307	12' Pine	10343	16' Palm	10380	14' Palm	10416	14' Pine	10453	16' Pine	10488	12' Palm	10524	12' Palm
10020	14' Palm	10056	16' Palm	10092	12' Palm	10128	12' Palm	10164	14' Palm	10200	12' Palm	10236	12' Palm	10272	14' Pine	10308	12' Palm	10344	12' Palm	10381	12' Palm	10417	14' Palm	10454	16' Pine	10489	12' Palm	10525	12' Palm
10021	20' Pine	10057	20' Pine	10093	12' Palm	10129	16' Palm	10165	14' Palm	10201	12' Palm	10237	16' Pine	10273	12' Pine	10309	14' Palm	10345	14' Palm	10382	12' Palm	10418	12' Palm	10455	18' Pine	10490	12' Palm	10526	12' Palm
10022	16' Palm	10058	16' Palm	10094	16' Pine	10130	14' Palm	10166	14' Palm	10202	12' Palm	10238	12' Pine	10274	14' Palm	10310	12' Palm	10346	14' Pine	10383	14' Pine	10419	20' Pine	10456	12' Palm	10491	12' Palm	10527	12' Palm
10023	12' Palm	10059	18' Pine	10095	12' Palm	10131	14' Palm	10167	14' Pine	10203	12' Palm	10239	14' Palm	10275	12' Palm	10311	12' Palm	10347	14' Pine	10384	12' Palm	10420	12' Palm	10457	12' Palm	10492	12' Palm	10528	12' Palm
10024	16' Pine	10060	16' Pine	10096	14' Pine	10132	16' Palm	10168	18' Pine	10204	12' Palm	10240	14' Palm	10276	12' Palm	10312	12' Palm	10348	22' Pine	10385	16' Palm	10421	14' Palm	10458	12' Palm	10493	12' Palm	10529	12' Palm
10025	20' Pine	10061	40' Oak	10097	12' Palm	10133	16' Pine	10169	14' Pine	10205	14' Oak	10241	12' Pine	10277	14' Palm	10313	14' Palm	10349	20' Pine	10386	14' Palm	10422	14' Palm	10459	12' Palm	10494	12' Palm	10530	12' Palm
10026	12' Pine	10062	18' Oak	10098	12' Palm	10134	12' Palm	10170	12' Palm	10206	12' Palm	10242	14' Palm	10278	14' Pine	10314	14' Palm	10350	14' Palm	10387	12' Palm	10423	14' Pine	10460	12' Palm	10495	12' Palm	10531	12' Palm
10027	14' Palm	10063	14' Palm	10099	14' Palm	10135	14' Palm	10171	16' Pine	10207	12' Palm	10243	12' Palm	10279	14' Palm	10315	14' Palm	10351	14' Palm	10388	14' Palm	10424	16' Pine	10461	12' Palm	10496	12' Palm	10532	12' Palm
10028	14' Pine	10064	24' Pine	10100	16' Palm	10136	12' Palm	10172	14' Palm	10208	16' Pine	10244	12' Palm	10280	12' Palm	10316	14' Palm	10352	14' Palm	10389	14' Palm	10425	14' Pine	10462	12' Palm	10497	12' Palm	10533	12' Palm
10029	12' Palm	10065	12' Palm	10101	12' Palm	10137	20' Pine	10173	12' Palm	10209	12' Palm	10245	16' Pine	10281	12' Pine	10317	12' Palm	10353	14' Pine	10390	24' Pine	10426	14' Palm	10463	12' Palm	10498	12' Palm	10534	12' Palm
10030	14' Pine	10066	14' Pine	10102	14' Pine	10138	12' Palm	10174	12' Palm	10210	20' Pine	10246	24' Pine	10282	14' Palm	10318	12' Palm	10354	14' Pine	10391	12' Palm	10427	14' Palm	10464	12' Palm	10499	12' Palm	10535	12' Palm
10031	20' Palm	10067	16' Pine	10103	16' Palm	10139	12' Palm	10175	14' Palm	10211	12' Palm	10247	16' Pine	10283	12' Pine	10319	16' Pine	10355	* Palm	10392	14' Palm	10428	12' Pine	10465	12' Palm	10500	12' Palm	10536	12' Palm
10032	18' Pine	10068	16' Palm	10104	12' Pine	10140	14' Palm	10176	20' Pine	10212	14' Palm	10248	14' Palm	10284	14' Palm	10320	14' Palm	10356	12' Pine	10393	18' Pine	10429	14' Pine	10466	12' Palm	10501	12' Palm	10537	12' Palm
10033	16' Pine	10069	12' Palm	10105	14' Palm	10141	18' Pine	10177	12' Palm	10213	12' Palm	10249	12' Pine	10285	16' Pine	10321	12' Pine	10357	14' Palm	10394	14' Palm	10430	14' Palm	10467	12' Palm	10502	12' Palm	10538	12' Palm
10034	16' Palm	10070	18' Pine	10106	12' Palm	10142	12' Palm	10178	16' Pine	10214	12' Palm	10250	12' Pine	10286	12' Palm	10322	14' Palm	10358	12' Pine	10395	12' Palm	10431	14' Palm	10468	12' Palm	10503	12' Palm	10539	12' Palm
10035	16' Pine	10071	22' Pine	10107	12' Palm	10143	12' Pine	10179	12' Pine	10215	12' Palm	10251	14' Palm	10287	14' Palm	10323	14' Palm	10360	16' Pine	10396	16' Palm	10432	12' Pine	10469	12' Palm	10504	12' Palm	10540	12' Palm

PLAN DISCLAIMER

THIS PLAN IS BASED ON A SURVEY PROVIDED
BY BSM & ASSOCIATES , DATED OCT 8, 2024

PREPARED BY



SCALE:

DATE: 10/14/25