



UTILITY COMMITTEE MEETING AGENDA

July 01, 2025 at 5:45 PM

Kronenwetter Municipal Center - 1582 Kronenwetter Drive Board Room (Lower Level)

1. CALL MEETING TO ORDER

- A. Pledge of Allegiance
- B. Roll Call

2. PUBLIC COMMENT

Please be advised per State Statute Section 19.84(2), information will be received from the public. It is the policy of this Village that Public Comment will take no longer than 15 minutes with a three-minute time period, per person, with time extension per the Chief Presiding Officer's discretion. Be further advised that there may be limited discussion on the information received, however, no action will be taken under public comments.

3. REPORTS AND DISCUSSIONS

- [C.](#) Director of Public Works and Utilities Report
- [D.](#) Finance Director Report

4. OLD BUSINESS - DISCUSSION AND POSSIBLE ACTION

- [E.](#) Financial Management Plan
- [F.](#) Air Relief Change Order

5. NEXT MEETING: Aug 5th, 2025

6. CONSIDERATION OF ITEMS FOR FUTURE AGENDA

7. ADJOURNMENT

WRITTEN COMMENTS: You can send comments on agenda items to kcoyle@kronenwetter.org

NOTE: *Requests from persons with disabilities who need assistance to participate in this meeting or hearing should be made at least 24 hours in advance to the Village Clerk's office at (715) 693-4200 during business hours.*

Posted: 06/27/2025 Kronenwetter Municipal Center and www.kronenwetter.org

Faxed: WAOW, WSAU, City Pages, Mosinee Times | Emailed: Wausau Daily Herald, WSAW, WAOW, Mosinee Times, Wausau Pilot and Review, City Pages



Report to Utility Committee

Item Name: Director of Public Works and Utilities Report

Meeting Date: July 1, 2025

Referring Body:

Committee Contact:

Staff Contact: Greg Ulman

Report Prepared by: Greg Ulman

- The annual Consumer Confidence Report is in the process of being printed and mailed out, a big thanks to Kim Coyle for her great work on this.
- Staff has been working on finishing the lead and galvanized inventory to go public. We have a July 1st deadline set by the EPA.
- Earth Inc, has been in a holding phase for the last month since they bored a pipe underneath the interstate by Kowalski Rd. Earth Inc. has proposed a longer pipe with less connections and was under review by our engineer, Rob from RPS, and a question was proposed to Earth Inc., and no response was given back to Rob. We have been trying to make contact with Earth Inc. but have heard nothing regarding their timeline either. Hass Inc, is looking to pave Kronenwetter Dr soon, but we anticipated Earth Inc. would have completed the boring down Kronenwetter Dr by this point, and this puts the paving a bit behind.
- On June 17 staff met with Becher-Hoppe and Kurita to determine the next steps of completing the areas of needs at the water filtration plant. The following are the highlights from the conference call.
 - Air Release Pipes – Currently there are 3 air release pipes that have fittings on the tanks for 2” pipes, but 1” pipes were installed via a reducer at the tank. Becher-Hoppe stated, “Eventhough it’s not recommended, the one-ince piping should work. It’ll just take a little longer to fill the tank.” Jered Close from Kurita responded, “The one-ince air release pipes are choking the CFM’s which in turn surcharges the water out the waste pipe, and it loses media.”
 - Ball Valve at the bottom of the verticle tanks – Kurita acknowledged that there should be a ball valve at the lowest point of the verticle tanks to let any sediment out. They said this was an oversight on their drawings/plans.
 - Actuator on the sticky valve – There is corrosion on the housing, which Becher-Hoppe says is a “warranty issue”. We are already in the process in getting this replaced from Kurita, we are just waiting for a shipping date.



VILLAGE OF KRONENWETTER WATER UTILITY

ANNUAL CONSUMER CONFIDENCE REPORT

Section 3, Item C.

Produced by: Kimberly Coyle, Kronenwetter Water Utility Clerk

The Consumer Confidence Report (CCR) provides information on your local drinking water quality. Every community water supplier must provide an annual report by July 1 of each year to its customers. The CCR shows the findings of water testing from the previous calendar year. Your current CCR, for example, will display information about your drinking water from the previous year.



This report contains important information about your drinking water. Have someone translate it for you or talk to someone who understands it.

Este informe contiene información importante acerca de su agua potable. Haga que alguien lo traduzca para usted, o hable con alguien que lo entienda.

Dlaim ntawv tshaabzu nuav muaj lug tseemceeb heev nyob rua huv kws has txug cov dlej mej haus. Kuas ib tug paab txhais rua koj, los nrug ib tug kws paub lug thaam.

YOUR UTILITY BILL AND WATER RATES IN 2024

Your utility bill is sent out on a quarterly basis at the end of the billing cycle to the property owner or tenant for the service address, and will be due on the 20th of the following month. Please keep in mind when mailing checks, that *the day your payment reaches the Water Utility office* is the day that it is processed and not the date on the check or the postmark on the envelope. Mail is not delivered to the Municipal Center on Saturdays.

Delinquent water and sewer bills accrue interest (late charges) every month until paid in full (water and fire protection 1% and sewer 3%). Late charges are added on all amounts due on the first business day after the 20th of every month. Late charges may not be waived.

If you are unable to pay your quarterly water bill by the due date, please contact the Water Utility office to set up a deferred payment agreement (DPA). Customers may be able to avoid disconnection of service by entering into a DPA. Service will not be disconnected if the customer pays 25% of the outstanding bill and agrees to pay the remaining outstanding balance in installment amounts. Balance must be paid in full before next quarterly bill is due.

Your utility bill consists of 3 components: a base charge, a volume charge for water, and a volume charge for sewer. The base charge consists of 3 components as well: a water base charge, a sewer base charge, and a fire protection charge. See the table below for pricing. Most residential homes have a 5/8" meter installed.

BASE CHARGE:	WATER	SEWER	FIRE PROTECTION (Public)	TOTAL
5/8" meter	\$16.20	\$43.45	\$13.20	\$72.85
3/4" meter	\$16.20	\$43.45	\$13.20	\$72.85
1" meter	\$30.00	\$220.07	\$33.00	\$283.07
1 1/2" meter	\$36.00	\$467.81	\$66.00	\$569.81
2" meter	\$51.00	\$701.65	\$105.00	\$857.65
2" compound meter	\$51.00	\$1403.41	\$105.00	\$1559.41
3" compound meter	\$75.00	\$1403.41	\$198.00	\$1676.41

VOLUME CHARGE – WATER

First 15,000 gallons - \$3.59 per 1,000 gallons of metered water
Over 15,000 gallons - \$3.43 per 1,000 gallons of metered water

VOLUME CHARGE – SEWER

Each 1,000 gallons - \$6.75 per 1,000 gallons of metered water

Detected Contaminants

Your water was tested for many contaminants last year. We are allowed to monitor for some contaminants less frequently than once a year. The following tables list only those contaminants which were detected in your water. If a contaminant was detected last year, it will appear in the following tables without a sample date. If the contaminant was not monitored last year, but was detected within the last 5 years, it will appear in the tables below along with the sample date.

DETECTED CONTAMINANTS DISINFECTION BYPRODUCTS

Contaminant (units)	Site	MCL	MCLG	Level Found	Range	Sample Date (if prior to 2023)	Violation	Typical Source of Contaminant
HAA5 (ppb)	DBP-1	60	60	16	16		No	By-product of drinking water chlorination
TTHM (ppb)	DBP-2	80	0	61.2	61.2		No	By-product of drinking water chlorination

INORGANIC CONTAMINANTS

Contaminant (units)	Site	MCL	MCLG	Level Found	Range	Sample Date (if prior to 2023)	Violation	Typical Source of Contaminant
ARSENIC (ppb)		10	n/a	1	1-1		No	Erosion of natural deposits; Runoff from orchards; Runoff from glass and electronics production wastes
BARIUM (ppm)		2	2	0.036	0.029-0.036	06/12/2023	No	Discharge of drilling wastes; Discharge from metal refineries; Erosion of natural deposits
CHROMIUM (ppb)		100	100	1	0-1		No	Discharge from steel and pulp mills; Erosion of natural deposits
FLUORIDE (ppm)		4	4	0.1	0.1-0.1	06/12/2023	No	Erosion of natural deposits; Water additive which promotes strong teeth; Discharge from fertilizer and aluminum factories
NITRATE (NO ₃ -N) (ppm)		10	10	3.70	1.20-3.70		No	Runoff from fertilizer use; Leaching from septic tanks, sewage; Erosion of natural deposits
SODIUM (ppm)		n/a	n/a	14.00	10.00-14.00	06/12/2023	No	n/a

Contaminant (units)	Action Level	MCLG	90th Percentile Level Found	# of Results	Sample Date (if prior to 2023)	Violation	Typical Source of Contaminant
COPPER (ppm)	AL=1.3	1.3	0.2900	0 of 20 results were above the action level.	08/22/2023	No	Corrosion of household plumbing systems; Erosion of natural deposits; Leaching from wood preservatives
LEAD (ppb)	AL=15	0	.76	1 of 20 results were above the action level.	08/22/2023	No	Corrosion of household plumbing systems; Erosion of natural deposits

RADIOACTIVE CONTAMINANTS

Contaminant (units)	Site	MCL	MCLG	Level Found	Range	Sample Date (if prior to 2023)	Violation	Typical Source of Contaminant
GROSS ALPHA, EXCL. R & U (pCi/l)		15	0	0.4	0.4-0.4	09/01/2020	No	Erosion of natural deposits
COMBINED URANIUM (ug/l)		30	0	0.5	0.4-0.5	09/01/2020	No	Erosion of natural deposits

Contaminants with a Public Health Groundwater Standard, Health Advisory Level, or a Secondary Maximum Contaminant Level or a Secondary Maximum Contaminant Level

The following table lists contaminants which were detected in your water and that have either a Public Health Groundwater Standard (PHGS), Health Advisory Level (HAL), or a Secondary Maximum Contaminant Level (SMCL), or both. There are no violations for detections of contaminants that exceed Health Advisory Levels, Public Health Groundwater Standards or Secondary Maximum Contaminant Levels. Secondary Maximum Contaminant Levels are levels that do not present health concerns but may pose aesthetic problems such as objectionable taste, odor, or color. Public Health Groundwater Standards and Health Advisory Levels are levels at which concentrations of the contaminant present a health risk.

Contaminant (units)	Site	SMCL (ppm)	PHGS or HAL (ppm)	Level Found	Range	Sample Date (if prior to 2023)	Typical Source of Contaminant
IRON (ppm)		0.3		0.82	0.79-0.88		Runoff/leaching from natural deposits, indus-
MANGANESE (ppm)		0.05	0.3	0.27	0.26 - 0.29		Leaching from natural deposits

Health effects for any contaminants with MCL violations/Action Level

Contaminant	Health Effects
IRON	Waters containing iron in quantities above the SMCL are not hazardous to health but may be objectionable for taste, odor, or color.
MANGANESE	Waters containing manganese in quantities above the SMCL are not hazardous to health but may be objectionable for taste, odor, or color.

Additional Information on Service Line Materials

We are required to develop an initial inventory of service lines connected to our distribution system by October 16, 2024 and to make the inventory publicly accessible. You can access the service line inventory here/by: The lead service line inventory can be viewed at: Kronenwetter Municipal Center 1582 Kronenwetter Dr. Kronenwetter, WI 54455 715-693-4200 (phone) 715-693-4202 (fax)

Definitions

Term	Definition
AL	Action Level: The concentration of a contaminant which, if exceeded, triggers treatment or other requirements which a water system must follow.
HA	HA: Health Advisory. An estimate of acceptable drinking water levels for a chemical substance based on health & effects information.
HAL	HAL: Health Advisory Level is a concentration of a contaminant which, if exceeded, poses a health risk and may require a system to post a public notice. Health Advisories are determined by US EPA.
HI	HI: Hazard Index: A Hazard Index is used to assess the potential health impacts associated with mixtures of contaminants. Hazard Index guidance for a class of contaminants or mixture of contaminants may be determined by the US EPA or Wisconsin Department of Health Services. If a Health Index is exceeded a system may be required to post a public notice.
Level 1	A Level 1 assessment is a study of the water system to identify potential problems and determine, if possible, why Assessment total coliform bacteria have been found in our water system.
Level 2	A Level 2 assessment is a very detailed study of the water system to identify potential problems and determine, if Assessment possible, why an E. coli MCL violation has occurred or why total coliform bacteria have been found in our water system, or both, on multiple occasions.
MCL	Maximum Contaminant Level: The highest level of a contaminant that is allowed in drinking water. MCLs are set as close to the MCLGs as feasible using the best available treatment technology.
MCLG	Maximum Contaminant Level Goal: The level of a contaminant in drinking water below which there is no known or expected risk to health. MCLGs allow for a margin of safety.
MFL	million fibers per liter
MRDL	Maximum residual disinfectant level: The highest level of a disinfectant allowed in drinking water. There is convincing evidence that addition of a disinfectant is necessary for control of microbial contaminants.
MRDLG	Maximum residual disinfectant level goal: The level of a drinking water disinfectant below which there is no known or expected risk to health. MRDLGs do not reflect the benefits of the use of disinfectants to control microbial contaminants. mrem/year millirems per year (a measure of radiation absorbed by the body)
Mrem/	Maximum residual disinfectant level goal: The level of a drinking water disinfectant below which there is not known or expected risk to health. MRDLG's do not reflect the benefits of the use of disinfectants to control microbial contaminants.
NTU	Nephelometric Turbidity Units
pCi/l	picocuries per liter (a measure of radioactivity)
ppm	parts per million, or milligrams per liter (mg/l)
ppb	parts per billion, or micrograms per liter (ug/l)
ppt	parts per trillion, or nanograms per liter
ppq	parts per quadrillion, or picograms per liter
PHGS	PHGS: Public Health Groundwater Standards are found in NR 140 Groundwater Quality. The concentration of a contaminate which, if exceeded, poses a health risk and may require a system to post a public notice.
RPHGS	RPHGS: Recommended Public Health Groundwater Standards: Groundwater standards proposed by the Wisconsin Department of Health Services. The concentration of a contaminant which, if exceeded, poses a health risk and may require a system to post a public notice.
SMCL	Secondary drinking water standards or Secondary Maximum Contaminant Levels for contaminants that affect taste, odor, or appearance of the drinking water. The SMCLs do not represent health standards.
TCR	Total Coliform Rule
TT	Treatment Technique: A required process intended to reduce the level of a contaminant in drinking water.

PFAS CONTAMINANTS WITHIN RECOMMENDED HEALTH ADVISORY LEVEL

Perfluoroalkyl and polyfluoroalkyl substances (PFAS) are a large group of human-made chemicals that have been used in industry and consumer products worldwide since the 1950. The following table list PFAS contaminants which were detected in your water and that have a Recommended Public Health Groundwater Standard (RPHGS) or Health Advisory Level (HAL). There are no violations for detections of contaminants that exceed the RPHGS or HAL. The RPHGS are levels at which concentrations of the contaminant present a health risk and are based on guidance provided by the Wisconsin Department of Health Services.

Note: The recommended health-based levels in the table below were in effect in 2024. These levels were revised by WDHS in 2025. They can be found here <https://www.dhs.wisconsin.gov/water/gws.htm>.

UNREGULATED CONTAMINANTS

Contaminant	Site	Recommended HAL (PPT)	Level Found	Range	Sample Date (if prior to 2023)	Typical Source of Contaminant
Perfluorooctanoic acid (PFOA)	Well 1 and Well 2	20 ppt	<.004	1.59-2.04	07/24/2024	Drinking water is one way that people can be exposed to PFAS. In Wisconsin, two-thirds of people use groundwater as their drinking water source. PFAS can get in groundwater from places that make or use PFAS and releases from certain types of waste in landfills.
Perfluorooctanesulfonic acid (PFOS)		20 ppt	<.004	0.82-1.10	07/24/2024	
Combined (PFOS, and PFOA) ⁽¹⁾ Note: PFOSA, Net-FOSE, Net-FOSA, Net-FOSAA were not sampled as part of method used for sampling.		20 ppt	<.004	1.59-2.04	07/24/2024	
Hexafluoropropylene oxide dimer acid (HPFO-DA; GenX)		300 ppt	<.005	ND	07/24/2024	
Perfluorobutanesulfonic acid (PFBS)		450,000 ppt	<.003	0.85-0.90	07/24/2024	
Perfluorohexanesulfonic acid (PFHxS)		40 ppt	<.003	0.44-0.52	07/24/2024	
Perfluorodecanoic acid (PFDA)		300 ppt	<.003	ND	07/24/2024	
Perfluorododecanoic acid (PFDoA)		500 ppt	<.003	ND	07/24/2024	
Perfluorohexanoic acid (PFHxA)		150,000 ppt	<.003	ND	07/24/2024	
Perfluorononanoic acid (PFNA)		30 ppt	<.004	ND	07/24/2024	
Perfluorotetradecanoic acid (PFTeA)		10,000 ppt	ND	ND	03/15/2022	
Perfluoroundecanoic acid (PFUnA)		3,000 ppt	<.002	ND	07/24/2024	
DONA (4,8-Dioxa-3H-perfluorononanoic acid)		3,000 ppt	ND	ND	03/15/2022	
DHS Hazard Index		1.0 (no units)	0.12	0.09-0.12	03/15/2022	

⁽¹⁾ DHS recommends a combined enforcement standard of 20 ng/L for PFOSA, Net-FOSE, Net-FOSA, NetFOSAA, PFOS, and PFOA. The recommended limit is 20 ppt for any *one* of these 6 compounds or the *combined total* of all 6. EPA Method 537.1 was used for Kronenwetter sampling and did not include results for PFOSA, Net-FOSE, Net-FOSA, NetFOSAA.

HEALTH INFORMATION

Drinking water, including bottled water, may reasonably be expected to contain at least small amounts of some contaminants. The presence of contaminants does not necessarily indicate that water poses a health risk. More information about contaminants and potential health effects can be obtained by calling the Environmental Protection Agency's safe drinking water hotline (800-426-4791).

Some people may be more vulnerable to contaminants in drinking water than the general population. Immuno-compromised persons such as persons with cancer undergoing chemotherapy, persons who have undergone organ transplants, people with HIV/AIDS or other immune systems disorders, some elderly, and infants can be particularly at risk from infections. These people should seek advice about drinking water from their health care providers. EPA/CDC guidelines on appropriate means to lessen the risk of infection by cryptosporidium and other microbial contaminants are available from the Environmental Protection Agency's safe drinking water hotline (800-426-4791).

WATER SYSTEM OPERATIONS

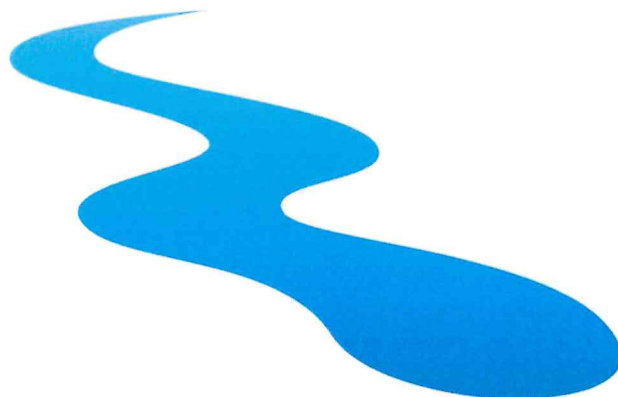
Reports on water system operations are included in the Utility Committee meeting packets every month. The meeting is generally held the 1st Tuesday of the month at 5:45 pm at the Village of Kronenwetter Municipal Center. Meeting packets are posted on the Village's website at http://www.kronenwetter.org/meeting_repository/utility_committee.php#. If you would like more information, please contact the Village at 715-693-4200.

EDUCATIONAL INFORMATION

The sources of drinking water, both tap water and bottled water, include rivers, lakes, streams, ponds, reservoirs, springs, and wells. As water travels over the surface of the land or through the ground, it dissolves naturally occurring minerals and, in some cases, radioactive material, and can pick up substances resulting from the presence of animals or from human activity.

Contaminants that may be present in source water include:

- Microbial contaminants, such as viruses and bacteria, which may come from sewage treatment plants, septic systems, agricultural livestock operations and wildlife.
- Inorganic contaminants, such as salts and metals, which can be naturally occurring or result from urban stormwater runoff, industrial or domestic wastewater discharges, oil and gas production, mining or farming.
- Pesticides and herbicides, which may come from a variety of sources such as agriculture, urban stormwater runoff and residential uses.
- Organic chemical contaminants, including synthetic and volatile organic chemicals, which are by-products of industrial processes and petroleum production, and can also come from gas stations, urban stormwater runoff and septic systems.
- Radioactive contaminants, which can be naturally occurring or be the result of oil and gas production and mining activities.



In order to ensure that tap water is safe to drink, EPA prescribes regulations that limit the amount of certain contaminants in water provided by public water systems. FDA regulations establish limits for contaminants in bottled water, which shall provide the same protection for public health.

Additional Health Information

Lead can cause serious health effects in people of all ages, especially pregnant people, infants (both formula-fed and breastfed), and young children. Lead in drinking water is primarily from materials and parts used in service lines and in home plumbing. Kronenwetter Water & Sewer Utility is responsible for providing high quality drinking water and removing lead pipes but cannot control the variety of materials used in the plumbing in your home. Because lead levels may vary over time, lead exposure is possible even when your tap sampling results do not detect lead at one point in time. You can help protect yourself and your family by identifying and removing lead materials within your home plumbing and taking steps to reduce your family's risk. Using a filter, certified by an American National Standards Institute accredited certifier to reduce lead, is effective in reducing lead exposures.

Follow the instructions provided with the filter to ensure the filter is used properly. Use only cold water for drinking, cooking, and making baby formula. Boiling water does not remove lead from water. Before using tap water for drinking, cooking, or making baby formula, flush your pipes for several minutes. You can do this by running your tap, taking a shower, doing laundry or a load of dishes. If you have a lead service line or galvanized requiring replacement service line, you may need to flush your pipes for a longer period.

If you are concerned about lead in your water and wish to have your water tested, contact Kronenwetter Water & Sewer Utility at 715-693-5732. Information on lead in drinking water, testing methods, and steps you can take to minimize exposure is available at <https://www.epa.gov/safewater/lead>.

HOW TO REMOVE BLACK STAINS IN PORCELAIN TOILETS

The black stains in your toilet bowl are from manganese in the water. Manganese is a metal that is often in small doses in your water supply. When mixed with minerals, such as iron and calcium, a brown or black discoloration occurs. Manganese can leave black stains in your toilets. Removing these stains requires minimal effort and leaves your toilets looking clean once again!

Things You Will Need

- Cream of tartar
- 3% hydrogen peroxide
- Toilet or scrub brush

Instructions

1. Shut the water off to your toilet.
2. Flush the toilet several times to get rid of the water.
3. Mix cream of tartar and 3% hydrogen peroxide into a thick paste.
4. Apply the paste to the stain, making sure it is completely covered.
5. Allow the paste to sit on the stain for at least 15 minutes.
6. Rinse the area with clean water to remove the paste.
7. Scrub the area with a toilet brush to remove any residual stain and repeat the process if necessary.



SOURCE(S) OF WATER

To obtain a summary of the source water assessment please contact, Greg Ullman at 715-693-4200.

Source ID	Source	Depth (in feet)	Status
1	Groundwater	90	Active
2	Groundwater	80	Active

DIGGERS HOTLINE

 Dial **811** or (800) 242-8511
www.DiggersHotline.com

HYDRANT FLUSHING

The Village water supply quality meets safe drinking water standards set by the EPA and the Wisconsin Department of Natural Resources. However, one well produces water with iron and manganese concentrations that are above secondary standards, which create aesthetic issues. These are common minerals found in central Wisconsin groundwater. The Village treats the well water with a sequestering agent to suspend the minerals in the water, so they are less visible. However, with time and oxidation from the disinfection process, some of the minerals drop out of suspension and coat the interior the water mains.

The Village bi-annually flushes the water mains for a number reasons. One of which is to flush the accumulated minerals out of the mains. In the past several years, a few months before the scheduled annual flushing, there were increasing numbers of random “discolored” water concerns. A flow disturbance within the water system stirred up the minerals and produced a black (manganese) or reddish (iron) tinted water. If a customer draws water as this cloud of tinted water passes their service, it can be noticeable (generally in a large volume such as a bathtub or toilet bowl). Most often, the tinted water clears in a short time period. However, some areas have experience tinted water for several days before it clears. The Village has conducted follow-up bacteriological testing after a number of the events, all with safe samples. The Village also conducts eight (8) bac-t tests monthly throughout the distribution system.

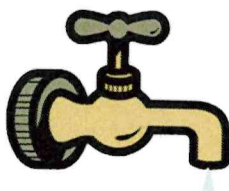


During the actual flushing process, customers may experience some disturbance in the water service such as a short-term decrease in water pressure or the appearance of “brown or discolored water”. The water is safe to drink, although it is best to avoid drinking the water until it runs clear from the tap. If discolored water should occur, please allow the water to settle down for a few hours and try again later. Those with sensitive water needs should draw water before the hours of flushing. If possible, wash clothes on the weekends to avoid the possibility of getting stained clothes. Using a product such as Iron Out may reduce the risk of staining.

The Village continues to evaluate the water supply quality; a phased approach has recently been adopted to address these issues. In the past, the Village has adjusted the sequestering agents feed rate and additional flushing activities have been implemented. While some of these items may reduce the tinted/colored water events, they will never be completely eliminated. While the water may periodically be tinted a darker color, it remains safe to use.

HIGH WATER USAGE? CHECK FOR LEAKS

Toilets are the biggest water culprits when it comes to a possible leak at your house. Check the toilet for leaks by removing the top off the tank and look very closely. If you see any water movement at all, try to locate where it is coming from. If you see no movement, then when you go to bed, add a couple drops of red food coloring in the tank (not the bowl) of the toilet. Wait overnight. When you wake up, check the toilet to see if there is any coloring in the bowl. If there is any coloring in the bowl, you have a leaking toilet.



If you know that you are not using any water in the house and no water is running outside, locate the water meter in your house (most likely in your basement). See if the digital display on your water meter is moving. If you are aware of no water being used, and the digital display is moving, then the leak is somewhere on the property. Check garden hoses, taps, and drip irrigation systems outside.

WATER QUALITY UPDATE

The Village of Kronenwetter in November 2020 received a letter from the DNR requesting that the Village submit a plan to the DNR detailing how the Village will address water quality concerns raised from “an appreciable number of persons,” who are customers of the utility. In January and February 2021, the Village Board consulted with a water quality consultant. The consultant put a plan of action together that the Village Board approved. The consultant submitted the program to the DNR, and the DNR accepted the plan. The highlights of the program are below:

The first phase involved the adjustment of our current wells. The Village worked with the DNR on blending water from Well #1 and Well #2 while also slowly reducing the amount of water used from Well #2. The production from Well #2 was reduced by 30% from 700 GPM to 500 GPM.

Currently the second phase of the response, which is purchasing treated water from the Village of Rothschild, is on hold. In early 2022 PFAS were detected in some of the Rothschild wells. The levels of PFAS in the Rothschild water were at levels that were below or just above the Wisconsin Department of Health Services recommended ground water standards. With the metering station complete the plan is to purchase water from Rothschild once the PFAS levels have been reduced from the Rothschild wells.

The water filtration treatment plant design was awarded to Becher Hopper Associates Inc. and construction began June 2023 with final completion was January 2025

The third phase has begun, with the site for a third well chosen west of the Water Tower. A site plan has been submitted to the DNR for review. Kronenwetter's continued growth will drive the timeline for future events such as second storage facility.

To follow updates, please visit the Village website's **Water Quality Efforts** page at https://www.kronenwetter.org/departments/water_quality_efforts.php.

SECURITY OF THE UTILITY FACILITIES

The water utility field operators are on-call 24 hours a day. The operators also visit most facilities daily to make sure the equipment is operating efficiently. If you see suspicious activity, please report it to the Kronenwetter Police Department immediately. The non-emergency number is 715-693-4215. There is a reward for prosecution of violators.

Thank you for your help in protecting our valuable resources.



5 EASY WAYS TO PAY YOUR WATER UTILITY BILL

Drop Box: We have a locked drop box located outside our building for after-hours payments. Place payment (check/money order and stub) in an envelope and deposit in the locked drop box.

Community Portal: <https://kronenwetterwi.ourcommunityconnect.com/login>

Automatic: We offer automatic bill payments from your checking or savings account. A **Direct Payment Authorization Form** can be found in our website's Forms Center at http://www.kronenwetter.org/document_center/index.php# or call 715-693-5732 to have one mailed or emailed to you.

Electronic: To make a credit or debit card payment, visit www.allpaid.com (use Pay Location Code a000qz) or stop by the Municipal Center. A payment on this website or swipe at the Municipal Center is the fastest way to make a payment, which is received in "real time". *Please be aware that AllPaid charges a service fee.*

Mail: Mail payments to Kronenwetter Water Utility (KWU), 1582 Kronenwetter Drive, Kronenwetter, WI 54455. *Please note that the day your payment reaches the Water Utility office is the day that it is processed and not the date on the check or the postmark on the envelope.*

SEWER MAINTENANCE

The Village is facing ever increasing costs with regard to lift station maintenance. Products marketed as "flushable", to avoid filling up landfills, are actually just products taking a more time consuming and costly path to landfills. These "flushable" products are causing a significant rise in maintenance costs across the country and Kronenwetter is no exception. As maintenance costs rise so do utility bills.

All of the Kronenwetter Water Utility's wastewater is pumped to the Rib Mountain Metro Sewerage District (RMMSD) wastewater treatment plant. We must not only abide by the Water Utility's sewer ordinances, but also the RMMSD sewer ordinances. Dumping of automobile oil, gasoline, or other contaminants into the sanitary sewer system is prohibited.

The municipal sewer system is equipped to handle normal sanitary waste. Sewer backups occasionally occur on a sudden and random basis. Cooking oil and grease should not be dumped down the drain as it can solidify in the cooler, deep sewers. Please do not use your toilet as an ashtray, wastebasket, or garbage disposal. **PLEASE DO NOT FLUSH ITEMS SUCH AS CLOTH RAGS, DISPOSABLE WIPES AND CLEANING CLOTHS (TO INCLUDE THE SWIFFER TYPE DISPOSABLE CLOTHS), PLASTIC/LATEX PRODUCTS (INCLUDING PLASTIC TAMPON APPLICATORS AND CONDOMS) DOWN THE TOILET.** These things should go into the wastebasket. These items can clog pumps and valves in the lift stations creating backups and flooding into your basement.

The Water Utility will not provide any compensation to property owners or renters for damage done by sudden and accidental sewer backups. We recommend that you add to your homeowner's insurance policy coverage for this hazard. Some companies offer coverage without additional cost, while others charge a modest fee. We also urge you to install a check valve in your basement floor drain. While this check valve requires periodic cleaning to insure proper working conditions, it can reduce the devastating effects of a sewer backup.

CROSS CONNECTION HAZARDS

What is a cross connection?

Water can become contaminated if connections to your plumbing system are not properly protected. A cross connection is an actual or potential connection between the safe drinking water supply and a source of contamination or pollution.

Water normally flows in one direction, however, under certain conditions, water can actually flow backwards. This is known as backflow. There are two situations that can cause water to flow backwards:

1. Back siphonage may occur due to a loss of pressure in the municipal water system during a fire fighting emergency, a water main break, or a system repair. This creates a siphon in your plumbing system which can draw water out of a sink or bucket and back into your water or the public water system.
2. Backpressure may be created when a source of pressure (such as a boiler) creates a pressure greater than the pressure supplied from the public water system. This may cause contaminated water to be pushed into your plumbing system through an unprotected cross connection.

To avoid contamination, backflow preventers are required by state plumbing codes wherever there is an actual or potential hazard for a cross connection.

Outside

Hoses, Pools, Buckets, Ponds

Keep the ends of hoses clear of all possible contaminants, and never submerge hoses which are connected to a faucet in buckets, pools, tubs, sinks, or ponds. For extra protection, install a bib vacuum breaker on your faucet.

In the Kitchen

Sinks, Faucets, Dishwashers

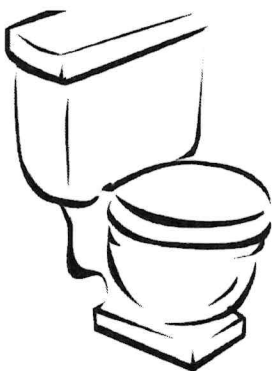
All hoses connected to sinks/faucets, dishwashers, and water treatment devices must have proper backflow prevention devices or methods. Dishwashers should be installed with a proper "air gap" device.

Water softeners and faucets should have the proper "air gap" which is a minimum of 1 inch above any drain or fixture outlet.

In the Bathroom

Toilets and Showerheads

While most toilets come from the manufacturer with the proper ballcock assembly, some do not. Make sure your toilet tanks have the approved ASSE 1002 Anti-Siphon Ballcock Assembly backflow preventer installed. If they don't, you can purchase the assembly at most local home improvement stores for under \$25. Make sure you look for the approved ASSE 1002 Assembly, as unapproved products which do not meet the state requirements may also be sold at retailers.



Hand-held shower heads which comply with state regulations from cross connection will have the same code ASME 112.18.1 stamped on the handle. In addition, make sure your hand-held shower head is at least 1 inch above the top of the flood level rim of the tub when it's hanging freely.

UTILITY CUSTOMER BILL OF RIGHTS

What if you have a complaint?

If you have a dispute regarding water service, the Public Service Commission of Wisconsin (PSCW) can help:



Did you contact your utility to resolve the dispute?

- Both you and the utility must make reasonable attempts to resolve a dispute

No?

- Contact the utility using its contact information included with the bill or notice

Yes?

- You may contact PSCW Consumer Affairs to try to resolve the issue

Disconnections

A utility can disconnect your service for:

- Nonpayment
- Default on a deferred payment agreement
- Nonpayment of a deposit
- "Name switching" on an account where a customer did not pay their bill and continues to reside at that address
- Tampering with utility equipment
- Safety hazards or other emergencies
- Failure to provide access to a meter or utility-owned equipment (such as required meter exchanges)

A utility must:

- Send you notice before disconnection (except where there is a safety hazard or self-reconnection)
- Include the reason(s) for disconnection, ways to contact the utility, and the dispute procedure on the notice

Delinquent Bills Levied as a Tax or Lien

Under state law, some delinquent municipal utility bills may be transferred as a tax to the property tax bill of the property owner or as a lien on tenant's personal assets.

Deferred Payment Agreements (DPAs)

You may request a deferred payment agreement (DPA) to pay a current or past due balance. A DPA consists of a 25% down payment on the balance of your utility bill. Installment payments toward the remaining balance are negotiated between you and your utility. The outstanding must be paid in full before the next quarterly bill is due. If the agreed installment plans are not paid, the utility may disconnect your service and add late fees. Municipal utilities may not be required to offer a DPA to some customers.

Meter Readings

Generally, meter readings are based on actual meter readings by the utility or the customer. If a utility cannot read your meter, a customer does not provide a reading, or there is an emergency, you may receive an estimated bill. You must allow utilities to perform meter readings or your service can be disconnected.

Medical/Protective Service Emergencies

If a disconnection will aggravate a medical or protective services emergency, the utility may delay service shut-off for up to 21 days. The utility may require documentation from a professional involved with the medical emergency or crisis. Contact your utility about any such special circumstances.

Contact Us

Phone (Local/Toll Free)

General: 608-266-5481 / 888-816-3831

Consumer Affairs: 608-266-2001 / 800-225-7729

Web

<http://psc.wi.gov>

You can also Log a Complaint Online at:

<http://apps.psc.wi.gov/pages/complaint.htm>

PRIVATE WELL REGULATIONS

All dwellings within the Kronenwetter Water Utility boundaries that have a private well must have a private well operating permit issued by the Village of Kronenwetter (Sec. 508-64). All unused, unsafe and/or noncompliant wells must be abandoned.

The Kronenwetter Water Utility may disconnect water services if a permit is not obtained or renewed. State and municipal codes require that wells be abandoned if they do not have a valid permit, meet code requirements, or are not in use. All well abandonments must be done by a certified well driller or pump installer. If you abandon your well, please forward a copy of the abandonment form to the Water Utility office as we keep this form on file.

The Village permit is a five-year permit. In five years you will receive a notice from the Water Utility with instructions on renewing your well permit.

Driven Point (Sand-Point) Well

To install a point well (sometimes called a sand-point well), call the Madison DNR office directly at 608-266-1054 to request a *Driven Point Well Packet*.

Obtain a DNR Notification number (before construction) by visiting any of over [1000 Licensing Sales Locations](#) where you can purchase a DNR hunting or fishing license OR by making an online purchase using the Quick Sales Catalog or your account on [GoWild](#). This number is required for your Well Construction Report Form.

More information can be found at <https://dnr.wi.gov/topic/Wells/constructionnotification.html#WNN>.

Drilled Well

To install a drilled well, contact a licensed well driller. The driller will design the well project and submit the required reports.

After a Driven Point or Drilled Well is Constructed

After your well is constructed and the Well Construction Report is completed, you will need to contact a licensed well driller or pump installer have a compliance inspection, cross-connection inspection, and water test for your Private Well Operating Permit completed. The permit will be issued after the DNR has approved your Well Construction Report and you have provided a safe water sample and certification for compliance.

The well must produce one SAFE test result. If the first test should fail, you will need to do additional testing at your own time and expense. You will have 90 days from the time of inspection to complete the permit process. After such time penalties shall be issued in accordance with Village Ordinance. Wells that do not meet compliance regulations will have to be abandoned. All abandonments must be completed by a licensed well driller or pump installer.

For additional information on private wells, you may contact Drinking Water and Groundwater staff at the DNR Regional Offices throughout the State or your local licensed well driller or pump installer or visit <https://dnr.wi.gov/topic/Wells/homeowners.html>.



Kronenwetter Water Utility
1582 Kronenwetter Drive
Kronenwetter WI 54455
Phone 715-693-5732
Fax 715-693-4202

Section 3, Item C.

PRSRT STD
U.S. POSTAGE
PAID
PERMIT NO. 6235
WAUSAU, WI
UMS

Current Resident Or

GO PAPERLESS!

Get your water utility bill emailed to you.

Go to http://www.kronenwetter.org/departments/receiving_emailled_water_bill.php
to obtain an **Emailing Water Bills Authorization Form** or contact
Kimberly Coyle, Water Utility Clerk, at 715-693-5732. You are now able to view and pay
your bill online at <https://kronenwetterwi.ourcommunityconnect.com>

Water Utility Office (Daytime) 715-693-5732
Emergency (After Hours) 715-571-2697
Business Hours: 8:00 am-4:30 pm, Monday-Friday



REPORT TO VILLAGE BOARD and APC

Section 3, Item D.

ITEM NAME: Finance/Treasurer Office Update: Comparative Internal Financial Statements for Year-to-Date thru 3/31/2025 & 3/31/2024
PREPARED BY: John Jacobs, Interim Finance Director
DATE PREPARED: 6/27/2025

I have compiled the Comparative Internal Financial Statements for Year-to-Date thru 3/31/2025 & 3/31/2024 for the Water & Sewer Funds for the APC meeting next week.

Here are some of the highlights.

Water Utility Fund:

- 2025 Revenues over Expenses = \$99,741
- 2024 Revenues (under) Expenses = (\$106,088) Deficit
- Therefore, the 2025 fund balance will have ADDED \$99,741 to the Water Utility fund balance as of 3/31/2025.
- No capital costs are recorded as “expenses” in the Water Utility Fund for 2025. Rather, all capital costs are “capitalized” as an Asset, and will be depreciated over the useful life of the capital asset.
- The Village utilized \$3,158,591 of the Safe Drinking Water Loan Program (out of a maximum of \$3,385,500) as of 3/31/2025. The remaining balance of \$226,909 will be utilized during second quarter 2025. The Village paid no interest of during 1st quarter 2025 on this loan in 2024. Principal payments will begin annually starting on 5/01/2025.
- The 2025 budget had been set with a budgetary surplus = \$147,879

Sewer Utility Fund:

- 2025 Revenues over Expenses = \$187,149
- 2024 Revenues over Expenses = \$14,393
- Therefore, the 2025 fund balance will have ADDED \$187,149 to the Sewer Utility fund balance as of 3/31/2025.
- No capital costs are recorded as “expenses” in the Sewer Utility Fund for 2025. Rather, all capital costs are “capitalized” as an Asset, and will be depreciated over the useful life of the capital asset.
- The Rib Mt Sewerage District expenses for first quarter 2025 = \$68,629, as compared to \$78,746 for first quarter 2024.
- There presently is no debt in the Sewer Utility Fund as of 3/31/2025.
- The 2025 budget had been set with a budgetary deficit = (\$470,458).

VILLAGE OF KRONENWETTER
Water Utility Fund
Year-to-Date Ended March 31, 2025 and 2024
(25% of Year Completed)

REVENUES:	3/31/2025 YTD Actual	2025 Original Budget	2025 Amended Budget	2025 Budget Variance - Positive (Negative)	3/31/2024 YTD Actual
Metered Sales-Residential	\$ 108,569	\$ 388,237	\$ 388,237	\$ (279,668)	\$ 71,270
Metered Sales-Commercial	9,702	39,320	39,320	(29,618)	8,416
Metered Sales-Industrial	2,636	8,349	8,349	(5,713)	1,786
Private Fire Protection	1,346	5,326	5,326	(3,980)	1,302
Public Fire Protection	32,707	115,014	115,014	(82,307)	20,972
Industrial Fire Protection	541	-	-	541	102
Commercial Fire Protection	1,576	-	-	1,576	1,571
Metered Sales-Public Authority	137	390	390	(253)	89
Metered Sales-Multi Family Residential	15,217	51,500	51,500	(36,283)	9,233
Cell Tower Rental on Water Tower	-	31,360	31,360	(31,360)	-
Water Connection Fees	275	1,000	1,000	(725)	550
Misc Operating Revenues	-	1,290	1,290	(1,290)	26
Clear Water Revenues	4,444	706,335	706,335	(701,891)	2,645
Contributed Assets	-	-	-	-	-
Interest on Investments	18,200	50,000	50,000	(31,800)	20,980
Interest on Lease Receivables	-	-	-	-	-
Forfeited Discounts	823	-	-	823	875
Misc Non-Operating Revenues	-	-	-	-	-
Apply Unrestricted Fund Balance	-	542,500	542,500	(542,500)	-
TOTAL REVENUES	\$ 196,173	\$ 1,940,621	\$ 1,940,621	\$ (1,744,448)	\$ 139,817
<i>Budget Percentage Received YTD</i>	<i>10.11%</i>				
EXPENSES:					
Utility Committee	\$ 270	\$ -	\$ -	\$ (270)	\$ -
Maintenance Meters	224	5,000	5,000	4,776	-
Pumping Expense	37,564	92,447	92,447	54,883	23,969
Purchased Water	-	250,000	250,000	250,000	-
Water Treatment Expense	3,029	34,000	34,000	30,971	7,644
Capital Projects	-	542,500	542,500	542,500	116,894
Trans/Distribution Expense	9,438	109,188	109,188	99,750	42,863
Billing Expense	8,387	55,385	55,385	46,998	9,840
Water Administration	24,029	160,414	160,414	136,385	35,134
Misc Water Expense	13,491	72,757	72,757	59,266	9,561
Safe Drinking Loan - Interest	-	71,051	71,051	71,051	-
Depreciation	-	400,000	400,000	400,000	-
Transfer to General Fund	-	-	-	-	-
TOTAL EXPENSES	\$ 96,432	\$ 1,792,742	\$ 1,792,742	\$ 1,696,310	\$ 245,905
<i>Budget Percentage Expended YTD</i>	<i>5.38%</i>				
NET CHANGE IN NET POSITION	\$ 99,741	\$ 147,879	\$ 147,879	\$ (48,138)	\$ (106,088)

VILLAGE OF KRONENWETTER
Sewer Utility Fund
Year-to-Date Ended March 31, 2025 and 2024
(25% of Year Completed)

REVENUES:	3/31/2025 YTD Actual	2025 Original Budget	2025 Amended Budget	2025 Budget Variance - Positive (Negative)	3/31/2024 YTD Actual
Metered Sales-Residential	\$ 230,479	\$ 817,691	\$ 817,691	\$ (587,212)	\$ 134,905
Metered Sales-Commercial	23,818	91,889	91,889	(68,071)	17,947
Metered Sales-Industrial	7,614	23,783	23,783	(16,169)	4,281
Metered Sales-Multi Family Residential	49,339	168,292	168,292	(118,953)	25,778
Metered Sales-Public Authority	875	3,253	3,253	(2,378)	744
Sewer Connection Fees	275	700	700	(425)	525
Misc Operating Revenues	-	-	-	-	-
Contributed Assets	-	-	-	-	-
Interest on Investments	13,116	35,000	35,000	(21,884)	15,743
Sewer Tax Roll	-	-	-	-	-
Forfeited Discounts	3,415	12,000	12,000	(8,585)	2,597
Misc Non-Operating Revenues	-	-	-	-	-
Apply Unrestricted Fund Balance	-	-	-	-	-
TOTAL REVENUES	\$ 328,931	\$ 1,152,608	\$ 1,152,608	\$ (823,677)	\$ 202,520
<i>Budget Percentage Received YTD</i>	<i>28.54%</i>				
EXPENSES:					
Sewer Administration/Crew	\$ 45,469	\$ 217,041	\$ 217,041	\$ 171,572	\$ 47,393
Sewer Operations/Maintenance	27,684	288,525	288,525	260,841	58,161
Rib Mt Sewerage District	68,629	430,000	430,000	361,371	78,746
Capital Projects	-	407,500	407,500	407,500	3,827
Depreciation	-	280,000	280,000	280,000	-
Transfer to General Fund	-	-	-	-	-
TOTAL EXPENSES	\$ 141,782	\$ 1,623,066	\$ 1,623,066	\$ 1,481,284	\$ 188,127
<i>Budget Percentage Expended YTD</i>	<i>8.74%</i>				
NET CHANGE IN NET POSITION	\$ 187,149	\$ (470,458)	\$ (470,458)	\$ 657,607	\$ 14,393

Greg,

Thank you for reaching out! Please know we never agreed to send the templates over as that is proprietary information (meaning we do not do that for any community). We can help with updating the figures. I believe the Board budgeted to have us assist with a Financial Management Plan (see Lisa's attached email for financial forecasting (including the item you are requesting) under line 100-51400-510-000 Independent Audit/Accounting for 16,000. The utility analysis would be 3k each (or 6k of the total 16k) and we are ready to start whenever. Let us know and we can send a disclosure for the full scope of work. Once we get the signed disclosure back the next steps are:

- Ehlers to send information needs to Village staff
- Village staff return information needs
- Ehlers works on analysis and in 4 weeks sends draft analysis to staff to review over Teams
- Ehlers makes any adjustments necessary based on draft review meeting and sends deliverables for packets
- Ehlers attends governing body meeting of choice to review deliverable

John,

FYI, the full FMP was proposed as it was a big issue with S&P that the Village had not done financial forecasting in quite awhile. The rest of the 10k covers the full Village operating (of levy supported funds) and capital plan beyond the utilities.

Thank you,
Brian

Brian Roemer

Senior Municipal Advisor

O: (262) 796-6178 | ehlers-inc.com



This e-mail and any attachments may contain information which is privileged or confidential. If you are not the intended recipient, note that any disclosure, copying, distribution or use of the contents of this message is prohibited. If you have received this e-mail in error, please destroy it and notify us immediately by return e-mail or at our telephone number, 800-552-1171. Any views or opinions presented in this e-mail are solely those of the author and may not represent the views or opinions of Ehlers Companies.



Report to Utility Committee

Agenda Item: Discussion and Possible Action: Completion of Water Filtration Plant Items

Meeting Date: July 1, 2025

Referring Body: Utility Committee

Committee Contact:

Staff Contact: Greg Ulman

Report Prepared by: Greg Ulman

AGENDA ITEM: Discussion and Possible Action: Completion of Water Filtration Plant Items

OBJECTIVE(S): To approve the change order for the water filtration plant.

HISTORY/BACKGROUND: There have been warning alarms when we do the backwash sequence since the plant came online, we've been reaching out to Becher-Hoppe as well as Kurita for an explanation. After many site visits Kurita determined the piping for the air release valve needed to be upsized on the horizontal filter tank. This also requires 1-inch taps to be installed at the bottom of each pipe on the vertical detention tanks. Fixing this problem will allow the air to move properly in the backwash sequence and eliminate the alarms as well.

RECOMMENDED ACTION: UC take action as it sees fit.

ATTACHMENTS: Change Order paperwork



3201 Stanley St
Stevens Point, WI 54481
PH: 715-345-5000
FAX: 715-345-5007

Section 4, Item F.

ES-08

CHANGE ORDER BREAKDOWN -- WORKSHEET				
<p>JOB NAME: Kronenwetter Well</p> <p>ARCH JOB NO: 2021.022</p> <p>ELLIS JOB NO: 23061</p> <p>CHANGE ORDER NUMBER: ES-08</p> <p>DESCRIPTION: RFP 04</p> <p>DATE: 05/14/25</p>				
ITEM	MATERIAL	LABOR	VENDOR/SUB	
General Conditions	0	63	425	
Ellis Construction		1,250		
Supervision for 2 days				
Howard Grote & Sons			876	
Remobilization and painting associated piping				
Rohde Brothers				
Air Release Piping			2,248	
Detention Tank Drains			5,378	
SUB - TOTALS	0	1,313	8,927	
SALES TAX ON MATERIAL 5.50%	0			
TAX & INS ON LABOR 27.00%		354		
LIABILITY INS 0.600%	0	10	54	
BOND 1.00%	0	17	90	
SUB - TOTALS	0	1,694	9,070	
PROFIT & OVERHEAD :				
LAB & MAT = 5.00%	0	85		
SUBCONTRACTORS = 5.00%			454	
SUB - TOTALS	0	1,778	9,524	
TOTAL CHANGE ORDER AMOUNT			\$11,302	
CONTRACT TIME WILL BE INCREASED BY: Work Days				
SUBMITTED BY ELLIS STONE CONSTRUCTION: BY: DATE:				
ARCHITECT'S APPROVAL OF CHANGE: BY: DATE:				
OWNER'S APPROVAL CHANGE: BY: DATE:				

ITEM:	QUAN	UNITS	UNIT \$ L	LABOR	UNIT \$ M	MAT'L
Supervision	20.0	HRS	\$62.50	\$1,250		Section 4, Item F.
				\$0		
				\$0		\$0.00
				\$0		\$0.00
				\$0		\$0.00
				\$0		\$0.00
				\$0		\$0.00
				\$0		\$0.00
				\$0		\$0.00
				\$0		\$0.00
				\$0		\$0.00
				\$0		\$0.00
TOTALS:				\$1,250		\$0



Ellis Stone Construction Co, Inc.
3201 Stanley Street
Stevens Point, Wisconsin 54481
Phone: (715) 345-5000
Fax: (715) 345-5007

Project: 23061 - Kronenwetter Well No. 2
1979 Lea Rd
Kronenwetter, Wisconsin 54455

CE #014 - RFP 04 - Modifications to Air Release Piping and Detention Tank Taps

CREATED BY:	Zach Gilmaster	CREATED DATE:	5/8/2025
STATUS:	Under Review	POTENTIAL CHANGE ORDER:	(None)
ASSIGNEE:	Kurt Grote (Howard Grote & Sons Painting, Inc.)		
DISTRIBUTION:			
SCOPE DESCRIPTION:			
REQUEST DETAILS:			
CE #014 - RFP 04 - Modifications to Air Release Piping and Detention Tank Taps			
ATTACHMENTS:			
RFP 04 - Taps on Pipes Air Release Piping.pdf			

RESPONSES					
Date	Response By	Quote Amount	Schedule Impact	Comments	Attachments/Details
05/14/2025	Kurt Grote	\$876.00	1 day	8 hours plus materials	

CHANGE ORDER COMPONENTS	
CCO:	(None)
NEGOTIATED AMOUNT:	

Zach Gilmaster

From: Kurt Grote <kgrote@groteandsons.com>
Sent: Wednesday, May 28, 2025 10:39 AM
To: Zach Gilmaster
Cc: Maureen Wells
Subject: RE: Kronenwetter Well No. 2: CE #014 - RFP 04 - Modifications to Air Release Piping and Detention Tank Taps DUE 05/13/25

CAUTION: This email originated from outside your organization. Exercise caution when opening attachments or clicking links, especially from unknown senders.

Hello Zach,

I can't get into Procore to change what I had written before.

Material includes paint and sundries such as thinner, brushes, rollers, rags, etcetera.	\$87.00
Mobilization to the job and return.	\$441.25
Labor to prep and paint PVC and touchups.	<u>\$264.75</u>
Total	\$876.00

Please let me know if there is anything else you need.

Kind regards,
Kurt R. Grote

President
Howard Grote & Sons, Inc.
FINISHING CONTRACTORS SINCE 1940
4900 Ivywood Trail McFarland, Wisconsin 53558
O: 608.838.6756 | F: 608.838.6762 | C: 608.576.8302

This communication is for use by the intended recipient and contains information that may be Privileged, confidential or copyrighted under applicable law. If you are not the intended recipient, you are hereby formally notified that any use, copying or distribution of this e-mail, in whole or in part, is strictly prohibited. Please notify the sender by return e-mail and delete this e-mail from your system. Unless explicitly and conspicuously designated as "E-Contract Intended", this e-mail does not constitute a contract offer, a contract amendment, or an acceptance of a contract offer. This e-mail does not constitute a consent to the use of sender's contact information for direct marketing purposes or for transfers of data to third parties.

From: Zach Gilmaster <zach@elliswi.com>
Sent: Wednesday, May 28, 2025 6:46 AM
To: Kurt Grote <kgrote@groteandsons.com>
Subject: RE: Kronenwetter Well No. 2: CE #014 - RFP 04 - Modifications to Air Release Piping and Detention Tank Taps DUE 05/13/25

Kurt,

Good morning. Following up on our phone call last week, were you able to put something together for the Kronenwetter RFP by chance? A breakdown of labor and material rates should suffice.

Thank you,

Zach Gilmaster

Proposal

Ellis Construction
Attn: Zach Gilmaster
3201 Stanley Street
Stevens Point, WI 54481

Proposal#: 20487
Date: 09-May-25

W5745 Woodchuck Lane
P.O. Box 409
Plymouth, WI 53073-0409
Phone: (920) 893-5905
Fax: (920) 893-5908

Department Totals

Pipe Fitting	\$2,248.00
--------------	------------

We hereby propose to furnish all material and labor necessary to complete work as described below, in a good and workmanlike manner, for the sum of: \$2,248

Two Thousand Two Hundred Forty-Eight Dollars

Description

Upsize discharge piping on three air release to 2" pipe size. Pipe and fittings to be sch 80 PVC routed to 6" above the floor with a #24 mesh screen.

All work to be done normal first shift hours 7am-3pm, Monday thru Friday.

According to plans and specifications as drawn by: Becher Hoppe

Project #: 23-066 Project: Air Release Piping

Location of Work: Kronenwetter Owner: Kronenwetter

Terms: Net 30 Days. Finance charge of 1-1/2% per month (Annual Percentage rate of 18%) added after 30 days after first billing date.

Accepted By: _____ Date: _____

Title: _____

Respectfully Submitted,

Brian Marquardt

Per: Brian Marquardt

ROHDE BROTHERS, INC.

This proposal when signed by you and returned to us shall constitute a valid and binding contract, which shall be governed and construed according to the laws of the State of Wisconsin. This proposal is subject to 30 days acceptance from the date of this proposal and may be changed without notice before actual receipt of acceptance. This proposal is based on a form of contract using the latest editions of AIA Document A201. "General Conditions of the Contract for Construction" in conjunction with either AIA Document A101, "Standard Form of Agreement Between Owner and Contractor" of AIA Document A401, "SUBCONTRACT Standard Form of Agreement Between Contractor and Subcontractor", or on a time and material form of contract using the latest edition of Rohde Brothers, Inc. "Standard Form of Construction Contract Proposal For Cost Of Work Plus A Fee". Rohde Brothers shall also be reimbursed for all expenses it incurs while protecting its rights in the performance of this work. This shall include any appropriate legal or administrative action that Rohde Brothers must take to protect its interests, such as, but not limited to, attorney and accounting fees, court reporter fees, filing fees, the actual cost of effecting service of papers or providing witnesses, and expenses incurred by Rohde Brothers itself.

CONFIDENTIAL CUSTOMER COPY

**Kronenwetter****Breakdown of Rohde Proposal #20487****Proposal Name: Air Release Piping**

Material	Cost
2" PVC 90's	\$ 13.32
2" PVC coupling	\$ 16.53
2" PVC Male Adapters	\$ 36.54
2" PVC pipe	\$ 120.20
2" PVC unions	\$ 60.09
2" SS clevis hangers	\$ 48.03
2" SS unistrut clamps	\$ 44.55
Glue	\$ 25.69
Primer	\$ 13.05
Total Before Adjustment	\$ 378.00
Allowable Adjustment	15.0%
Total Material Cost	\$ 434.70

Labor	Cost
Field Deliveries @\$65.00	\$ 130.00
Journeyman pipefitter @\$65.37	\$ 1,176.66
Room and Board	\$ 270.00
Total Before Adjustment	\$ 1,576.66
Allowable Adjustment	15.0%
Total Labor Cost	\$ 1,813.16

Material Total:	\$ 435
Total Labor	\$ 1,813
Total Subcontractor	\$ 0
Total Change Order	\$ 2,248

Proposal

Ellis Construction
Attn: Zach Gilmaster
3201 Stanley Street
Stevens Point, WI 54481

Proposal#: 20488

Date: 09-May-25

W5745 Woodchuck Lane
P.O. Box 409
Plymouth, WI 53073-0409
Phone: (920) 893-5905
Fax: (920) 893-5908

Department Totals

Pipe Fitting	\$5,379.00
--------------	------------

We hereby propose to furnish all material and labor necessary to complete work as described below, in a good and workmanlike manner, for the sum of: \$5,379

Five Thousand Three Hundred Seventy-Nine Dollars

Description

Install a 1" drain on the bottom of each U-bend under the four detention tanks. A 1" stainless steel butt weld 90 will be welded into the bottom of each u-bend with a horizontal piece of 1" pipe extending out to a 1" stainless steel threaded ball valve. Detention tanks will need to be bypassed for a period of up to two days to perform the work. U-bends to be swabbed with a chlorine solution and put back into service.

All work to be done normal first shift hours 7am-3pm, Monday thru Friday.
Pipe and fittings will not meet AIS requirements.
Bac T testing not included.

According to plans and specifications as drawn by: Becher Hoppe

Project #: 23-066 Project: Detention Tank Drains

Location of Work: Kronenwetter Owner: Kronenwetter

Terms: Net 30 Days. Finance charge of 1-1/2% per month (Annual Percentage rate of 18%) added after 30 days after first billing date.

Respectfully Submitted,

Brian Marquardt

Accepted By: _____ Date: _____

Per: Brian Marquardt

Title: _____

ROHDE BROTHERS, INC.

This proposal when signed by you and returned to us shall constitute a valid and binding contract, which shall be governed and construed according to the laws of the State of Wisconsin. This proposal is subject to 30 days acceptance from the date of this proposal and may be changed without notice before actual receipt of acceptance. This proposal is based on a form of contract using the latest editions of AIA Document A201. "General Conditions of the Contract for Construction" in conjunction with either AIA Document A101, "Standard Form of Agreement Between Owner and Contractor" of AIA Document A401, "SUBCONTRACT Standard Form of Agreement Between Contractor and Subcontractor", or on a time and material form of contract using the latest edition of Rohde Brothers, Inc. "Standard Form of Construction Contract Proposal For Cost Of Work Plus A Fee". Rohde Brothers shall also be reimbursed for all expenses it incurs while protecting its rights in the performance of this work. This shall include any appropriate legal or administrative action that Rohde Brothers must take to protect its interests, such as, but not limited to, attorney and accounting fees, court reporter fees, filing fees, the actual cost of effecting service of papers or providing witnesses, and expenses incurred by Rohde Brothers itself.

CONFIDENTIAL CUSTOMER COPY

**Kronenwetter****Breakdown of Rohde Proposal #20488****Proposal Name: Detention Tank Drains**

Material	Cost
1" 90	\$ 18.86
1" Ball Valves	\$ 505.12
1" pipe	\$ 134.97
1" plug	\$ 26.44
Total Before Adjustment	\$ 685.39
Allowable Adjustment	15.0%
Total Material Cost	\$ 788.20

Labor	Cost
Field Deliveries @\$65.00	\$ 130.00
Journeyman Pipefitter @\$65.37	\$ 2,941.65
Room and Board	\$ 660.00
Shop Fab @\$65.00	\$ 260.00
Total Before Adjustment	\$ 3,991.65
Allowable Adjustment	15.0%
Total Labor Cost	\$ 4,590.40

Material Total:	\$ 788
Total Labor	\$ 4,590
Total Subcontractor	\$ 0
Total Change Order	\$ 5,378



330 N. 4th Street, Wausau, WI 54403-5417
715-845-8000 | becherhoppe.com

May 7, 2025

Mr. Zach Gilmaster
Ellis Construction
3201 Stanley Street
Stevens Point, WI 54481

Subject: Request for Proposal 04 – Air Release Piping Modifications and Tap Installations

Please provide a cost proposal including labor hours, cost of labor, material costs, subcontractor costs (also broken down into labor hours, labor cost, and material costs) and supporting vendor pricing information for the following:

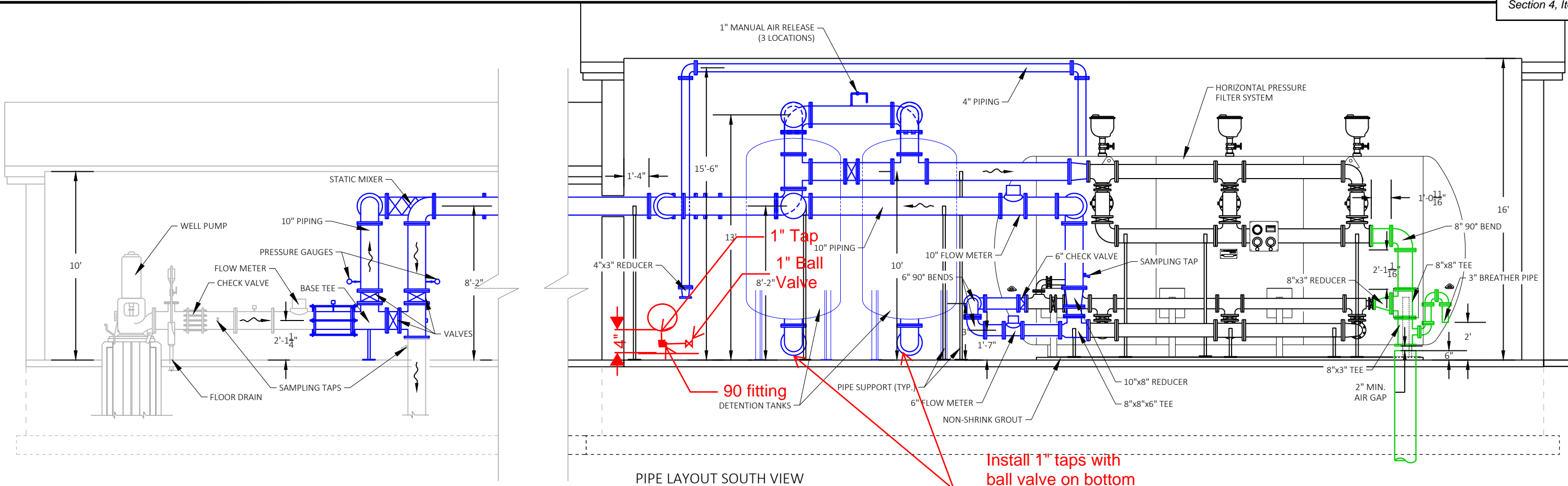
1. Modify the three (3) air release valve piping located on the top of the pressure filters from 1" PVC piping to 2" PVC Piping with #24 mesh.
2. Modify process piping between detention tanks to include two (2) 1" taps, 90 bend fittings and a ball valve.

Sincerely,

A handwritten signature in blue ink, appearing to read "Joe Kafczynski". The signature is fluid and cursive, with the first name "Joe" being more prominent.

Joe Kafczynski
Project Engineer

Enclosures

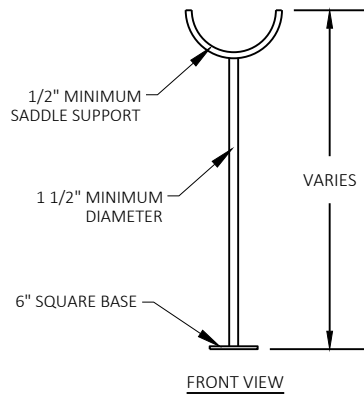
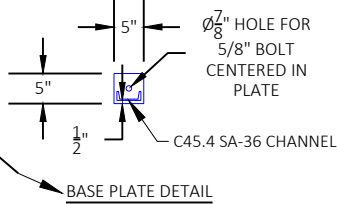


PIPE LAYOUT SOUTH VIEW

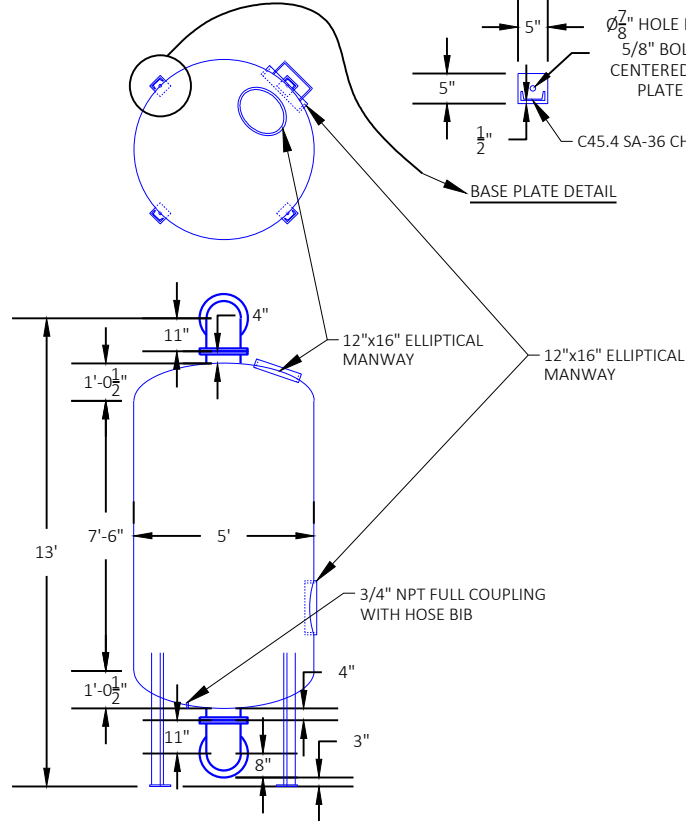
Install 1" taps with ball valve on bottom of each pipe. Total 2 taps.

Provide 2" PVC Piping for Air Release Valve with #24 Mesh Screen Placed 24" above floor

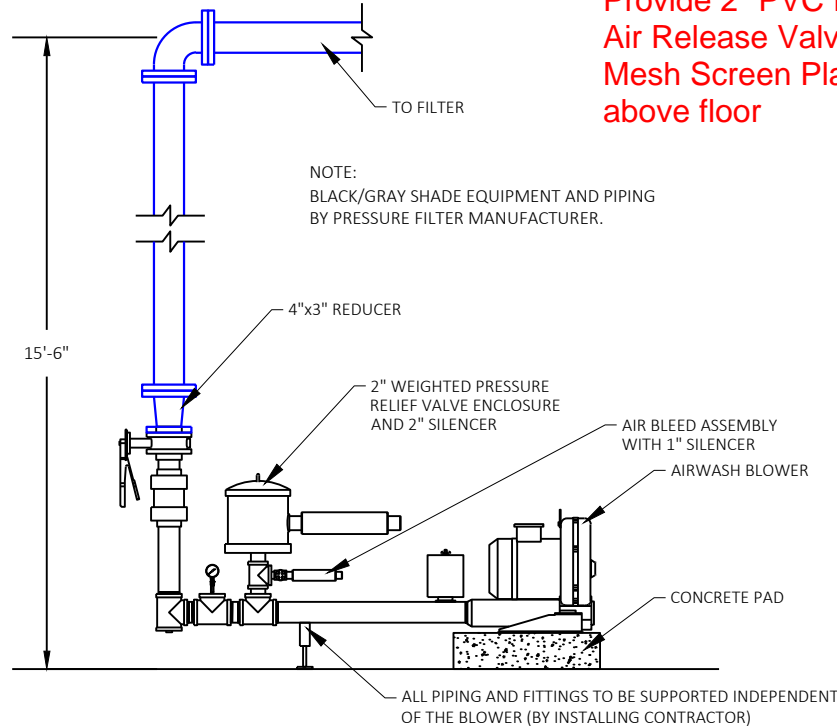
NOTE
THE PRESSURE FILTER VESSEL AND FACE PIPING DRAWINGS FROM TONKA WATER A KURITA BRAND.



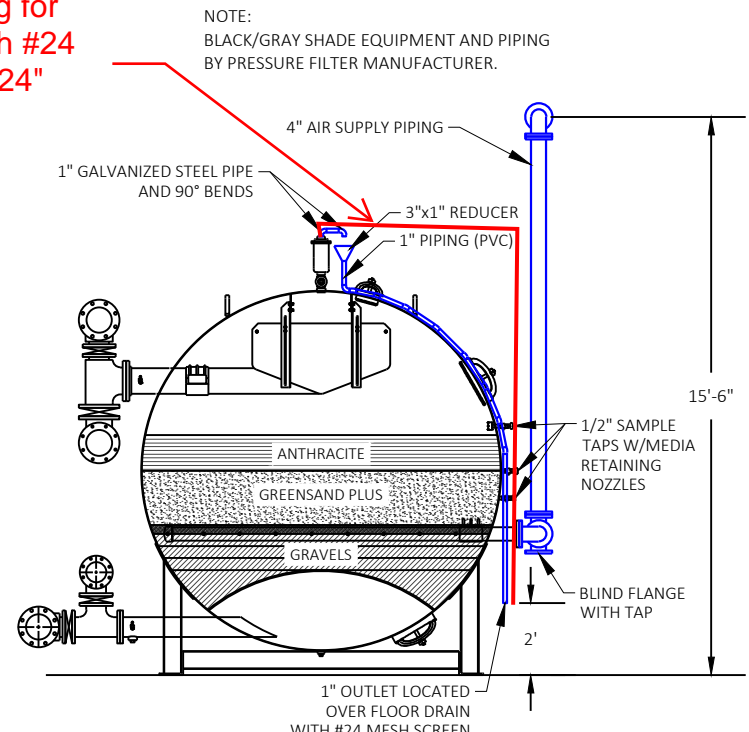
TYPICAL PIPE SUPPORT DETAIL
NOT TO SCALE



DETENTION TANK DETAIL
NOT TO SCALE



AIRWASH BLOWER SYSTEM DETAIL
NOT TO SCALE



PRESSURE FILTER DETAIL - SECTION VIEW
NOT TO SCALE

LAYOUT: 805
PLOT TIME: 3/23/2023 3:43 PM
FILE NAME: P:\2021\2021.022 - Kronenwetter - Meter Station-DWTF\CAD - DWTF Well 2\CAD\Plans\21022_8-00-W2-pl.dwg
Copyright 2022, Becher-Hoppe Assoc. Inc.



330 N. 4th Street, Wausau, WI 54403-5417
715-845-8000 | becherhoppe.com

CONTRACT: Village of Kronenwetter – Well #2 Treatment Facility

To: Zach Gilmaster Ellis Construction 3201 Stanley Street Stevens Point, WI 54481 Phone: 715.345-5000, ext 133 Email: zach@elliswi.com	From: Joe Kafczynski Becher-Hoppe Associates, Inc. 330 N. 4th Street Wausau, WI 54403 Phone: 715.845.0436 Email: jkafczynski@becherhoppe.com
---	---

Received Date:	May 14, 2025
----------------	--------------

WE ARE RESPONDING TO THE FOLLOWING RFP:	
RFP # :	04
Section:	N/A
Description:	Proposal 4 Review Response

COMMENTS:

- Please revise and resubmit.
- Please provide additional break downs of materials and labor and their costs as provided in the marks up enclosed.

REVIEWER(S)
J. Kafczynski

DATE
5-15-2025



Ellis Stone Construction Co, Inc.
3201 Stanley Street
Stevens Point, Wisconsin 54481
Phone: (715) 345-5000
Fax: (715) 345-5007

Project: 23061 - Kronenwetter Well No. 2
1979 Lea Rd
Kronenwetter, Wisconsin 54455

CE #014 - RFP 04 - Modifications to Air Release Piping and Detention Tank Taps

CREATED BY:	Zach Gilmaster	CREATED DATE:	5/8/2025
STATUS:	Under Review	POTENTIAL CHANGE ORDER:	(None)
ASSIGNEE:	Kurt Grote (Howard Grote & Sons Painting, Inc.)		
DISTRIBUTION:			
SCOPE DESCRIPTION:			
REQUEST DETAILS:			
CE #014 - RFP 04 - Modifications to Air Release Piping and Detention Tank Taps			
ATTACHMENTS:			
RFP 04 - Taps on Pipes Air Release Piping.pdf			

RESPONSES

Date	Response By	Quote Amount	Schedule Impact	Comments	Attachments/Details
05/14/2025	Kurt Grote	\$876.00	1 day	8 hours plus materials	

CHANGE ORDER COMPONENTS

CCO: (None)

NEGOTIATED AMOUNT:

Please provide additional information on what will be painted/coated.

Please provide breakdown of labor and materials.

Proposal

Ellis Construction
Attn: Zach Gilmaster
3201 Stanley Street
Stevens Point, WI 54481

Proposal#: 20487
Date: 09-May-25

W5745 Woodchuck Lane
P.O. Box 409
Plymouth, WI 53073-0409
Phone: (920) 893-5905
Fax: (920) 893-5908

Department Totals

Pipe Fitting	\$2,240.00
--------------	------------

We hereby propose to furnish all material and labor necessary to complete work as described below, in a good and workmanlike manner, for the sum of: \$2,240

Two Thousand Two Hundred Forty Dollars

Description

Upsize discharge piping on three air release to 2" pipe size. Pipe and fittings to be sch 80 PVC routed to 6" above the floor with a #24 mesh screen.

All work to be done normal first shift hours 7am-3pm, Monday thru Friday.

According to plans and specifications as drawn by: Becher Hoppe

Project #: 23-066 Project: Air Release Piping

Location of Work: Kronenwetter Owner: Kronenwetter

Terms: Net 30 Days. Finance charge of 1-1/2% per month (Annual Percentage rate of 18%) added after 30 days after first billing date.

Accepted By: _____ Date: _____

Title: _____

Respectfully Submitted,

Brian Marquardt

Per: Brian Marquardt

ROHDE BROTHERS, INC.

This proposal when signed by you and returned to us shall constitute a valid and binding contract, which shall be governed and construed according to the laws of the State of Wisconsin. This proposal is subject to 30 days acceptance from the date of this proposal and may be changed without notice before actual receipt of acceptance. This proposal is based on a form of contract using the latest editions of AIA Document A201. "General Conditions of the Contract for Construction" in conjunction with either AIA Document A101, "Standard Form of Agreement Between Owner and Contractor" of AIA Document A401, "SUBCONTRACT Standard Form of Agreement Between Contractor and Subcontractor", or on a time and material form of contract using the latest edition of Rohde Brothers, Inc. "Standard Form of Construction Contract Proposal For Cost Of Work Plus A Fee". Rohde Brothers shall also be reimbursed for all expenses it incurs while protecting its rights in the performance of this work. This shall include any appropriate legal or administrative action that Rohde Brothers must take to protect its interests, such as, but not limited to, attorney and accounting fees, court reporter fees, filing fees, the actual cost of effecting service of papers or providing witnesses, and expenses incurred by Rohde Brothers itself.

CONFIDENTIAL CUSTOMER COPY

**Kronenwetter****Breakdown of Rohde Proposal #20487****Proposal Name: Air Release Piping**

Material	Cost
Pipe, Fittings, Hangers	\$ 378.00
Total Before Adjustment	\$ 378.00
Allowable Adjustment	15.0%
Total Material Cost	\$ 434.70

Labor	Cost
Field Deliveries	\$ 130.00
Field Installation	\$ 1,440.00
Total Before Adjustment	\$ 1,570.00
Allowable Adjustment	15.0%
Total Labor Cost	\$ 1,805.50

Material Total:	\$ 435
Total Labor	\$ 1,806
Total Subcontractor	\$ 0
Total Change Order	\$ 2,241

Break out Labor. Example:

1. Number of Employees and Classification
2. Provide Rate
3. Provide total hours and total

2 Laborers at \$90/hour = XXXX.XX

Proposal

Ellis Construction
Attn: Zach Gilmaster
3201 Stanley Street
Stevens Point, WI 54481

Proposal#: 20488
Date: 09-May-25

W5745 Woodchuck Lane
P.O. Box 409
Plymouth, WI 53073-0409
Phone: (920) 893-5905
Fax: (920) 893-5908

Department Totals

Pipe Fitting	\$5,377.00
--------------	------------

We hereby propose to furnish all material and labor necessary to complete work as described below, in a good and workmanlike manner, for the sum of: \$5,377

Five Thousand Three Hundred Seventy-Seven Dollars

Description

Install a 1" drain on the bottom of each U-bend under the four detention tanks. A 1" stainless steel butt weld 90 will be welded into the bottom of each u-bend with a horizontal piece of 1" pipe extending out to a 1" stainless steel threaded ball valve. Detention tanks will need to be bypassed for a period of up to two days to perform the work. U-bends to be swabbed with a chlorine solution and put back into service.

All work to be done normal first shift hours 7am-3pm, Monday thru Friday.
Pipe and fittings will not meet AIS requirements.
Bac T testing not included.

According to plans and specifications as drawn by: Becher Hoppe

Project #: 23-066 Project: Detention Tank Drains

Location of Work: Kronenwetter Owner: Kronenwetter

Terms: Net 30 Days. Finance charge of 1-1/2% per month (Annual Percentage rate of 18%) added after 30 days after first billing date.

Accepted By: _____ Date: _____

Title: _____

Respectfully Submitted,

Brian Marquardt

Per: Brian Marquardt

ROHDE BROTHERS, INC.

This proposal when signed by you and returned to us shall constitute a valid and binding contract, which shall be governed and construed according to the laws of the State of Wisconsin. This proposal is subject to 30 days acceptance from the date of this proposal and may be changed without notice before actual receipt of acceptance. This proposal is based on a form of contract using the latest editions of AIA Document A201. "General Conditions of the Contract for Construction" in conjunction with either AIA Document A101, "Standard Form of Agreement Between Owner and Contractor" of AIA Document A401, "SUBCONTRACT Standard Form of Agreement Between Contractor and Subcontractor", or on a time and material form of contract using the latest edition of Rohde Brothers, Inc. "Standard Form of Construction Contract Proposal For Cost Of Work Plus A Fee". Rohde Brothers shall also be reimbursed for all expenses it incurs while protecting its rights in the performance of this work. This shall include any appropriate legal or administrative action that Rohde Brothers must take to protect its interests, such as, but not limited to, attorney and accounting fees, court reporter fees, filing fees, the actual cost of effecting service of papers or providing witnesses, and expenses incurred by Rohde Brothers itself.

CONFIDENTIAL CUSTOMER COPY

**Kronenwetter****Breakdown of Rohde Proposal #20488****Proposal Name: Detention Tank Drains**

Material	Cost
Pipe, Fittings, Valves	\$ 685.39
Total Before Adjustment	\$ 685.39
Allowable Adjustment	15.0%
Total Material Cost	\$ 788.20

Labor	Cost
Field Deliveries	\$ 130.00
Field Installation	\$ 3,600.00
Shop Fab	\$ 260.00
Total Before Adjustment	\$ 3,990.00
Allowable Adjustment	15.0%
Total Labor Cost	\$ 4,588.50

Material Total:	\$ 788
Total Labor	\$ 4,589
Total Subcontractor	\$ 0
Total Change Order	\$ 5,377

Break out materials If more than one item used. Example:

1. Piping \$XXX.XX = XX FT = \$XXXX.XX
2. Fittings \$XXX.XX = XX EACH = \$XXXX.XX

Break out Labor. Example:

1. Number of Employees and Classification
2. Provide Rate
3. Provide total hours and total

2 Laborers at \$90/hour = XXXX.XX