



CITY OF KETCHUM, IDAHO
ARTS COMMISSION SPECIAL MEETING
Friday, May 24, 2024, 12:00 PM
191 5th Street West, Ketchum, Idaho 83340

AGENDA

PUBLIC PARTICIPATION INFORMATION

Public information on this meeting is posted outside City Hall.

We welcome you to watch Ketchum Arts Commission Meetings via live stream.

You will find this option on our website at www.ketchumidaho.org/meetings.

If you would like to comment on a public hearing agenda item, please select the best option for your participation:

1. Join us via Zoom (*please mute your device until called upon*).
Join the Webinar: <https://ketchumidaho-org.zoom.us/j/85194109799>
Webinar ID: 851 9410 9799
2. Join us at City Hall.
3. Submit your comments in writing at participate@ketchumidaho.org (*by noon the day before the meeting*)

This agenda is subject to revisions. All revisions will be underlined.

CALL TO ORDER: By Sophie Sawyers

ROLL CALL: Pursuant of Idaho Code Section 74-204(4), all agenda items are action items, and a vote may be taken on these items

COMMUNICATIONS FROM CHAIRMAN AND COMMISSIONERS:

CONSENT AGENDA:

1. Recommendation to approve April 18, 2024 Meeting Minutes

PUBLIC HEARING:

NEW BUSINESS:

2. Recommendation to approve Artwork selection for Sun Valley Road/Spruce Avenue
3. Recommendation to approve artwork selections for Art on 4th

ADJOURNMENT:



CALL TO ORDER: Chairperson Carter Hedberg called the meeting to order at 12:05 PM.
(00:00:13 in video)

Roll Call:

Carter Hedberg
Kristin Poole (*via teleconference*)
Jill Lear
Mylan Chacon
Sophie Sawyers (*via teleconference*)
Jean Pierre Veillet

Absent:

Elizabeth Youmans
Wendal Wirth
Meredith Skillman

ALSO PRESENT:

Daniel Hansen—Community Engagement Manager
Trent Donat—Business Manager/City Clerk
Dawn Hofheimer—Administrative Specialist

CONSENT AGENDA:

- 1. Motion to approve March 21, 2024, minutes. (00:01:23 in video)**
Mover: Mylan Chacon
Second: Jill Lear
Result: Adopted
- 2. Recommendation to approve reissue of Call to Artists for Sun Valley and Spruce Avenue Art Instillation.**
Presented by: Daniel Hansen (00:01:56 in video)

Motion to approve reissue of Call to Artists for Sun Valley and Spruce Avenue Art Instillation. (00:04:36 in video)

Mover: Mylan Chacon
Second: Jean Pierre Veillet
Result: Adopted

NEW BUSINESS:

- 3. Reissue Call to Artists for Sun Valley Road and East Avenue/Sun Valley Road/Walnut Crosswalk.**
Presented by: Daniel Hansen (00:05:14 in video)

Comments, questions, and discussion by commissioners (00:07:46 in video)

Motion to approve reissue of Call to Artists for Sun Valley Road and East Avenue/Sun Valley Road/Walnut Crosswalk with the changes as outlined by Daniel Hansen. (00:14:46 in video)

Mover: Carter Hedberg
Second: Kristen Poole
Result: Adopted

Daniel Hansen added that he has asked the Streets Department to lay down an additional base to add vibrancy and add extension to the life of the design. (00:15:05 in video)

4. Update on the garage door art installation at the Recreation Department Building.
Presented by: Daniel Hansen (00:16:24 in video)
5. Update on past Arts Commission members' gifts.
Presented by: Carter Hedberg (00:17:52 in video)
6. Report on status of 5% for Art funding associated with Main Street Construction.
Presented by: Daniel Hansen (00:18:54 in video)
7. Art on 4th Call to Artists.
Presented by: Carter Hedberg (00:30:36 in video)

Comments, questions, and discussion by commissioners (00:31:34 in video)

ADJOURNMENT:

Motion to adjourn. (00:49:53 in video)
Mover: Jean Pierre Veillet
Second: Mylan Chacon
Result: Adjourned

Carter Hedberg—Commissioner Chairperson

Trent Donat—City Clerk



City of Ketchum

KETCHUM ARTS COMMISSION MEETING AGENDA MEMO

Meeting Date: Staff Member/Dept:

Agenda Item:

Recommended Motion:

I approve the artwork piece selected by the majority of present Arts Commissioners to be installed this year for the Sun Valley Road and Spruce Avenue exhibition.

Reasons for Recommendation:

Five artists submitted 10 qualifying pieces of artwork during the last two rounds of calls to artists for the Sun Valley Road and Spruce Avenue exhibition.

All artists who submitted art for the Art on 4th call to artists have agreed to have their work considered for the Sun Valley Road and Spruce Ave. location as well.

All submissions appear to meet the installation requirements.

Policy Analysis and Background (non-consent items only):

Sustainability Impact:

None OR state impact here:

Financial Impact:

None OR Adequate funds exist in account:

Attachments:

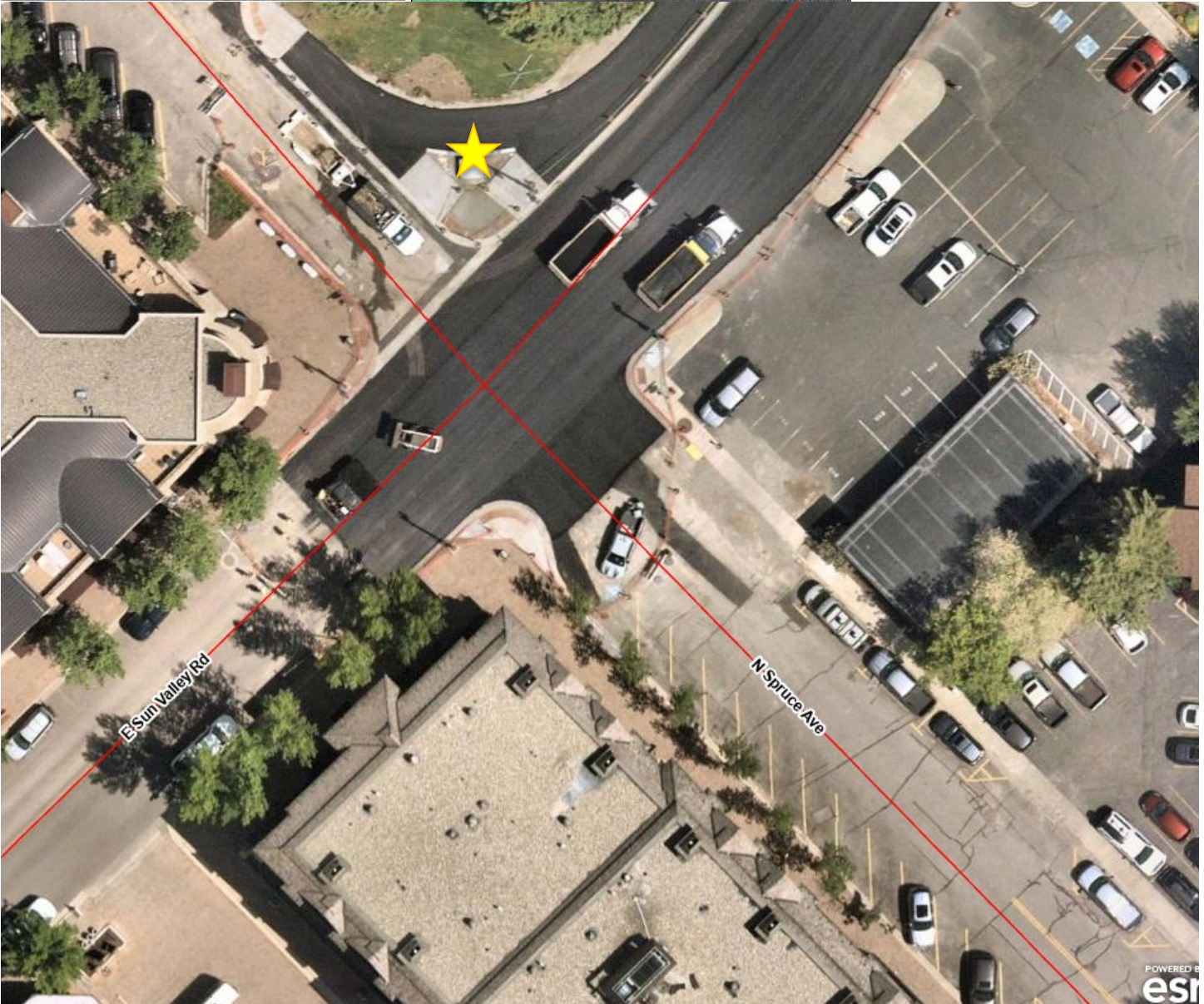
- 1. Art installation location
- 2. Ascension: steel with rust patina

3. Mountain Horse: bronze
4. Modern Man: direct metal sculpture
5. Transparencies in Time: Cuahpohualli embedded in ethnopoetic language poetry
6. Epiphany: direct metal sculpture
7. Lively Spiral with Rust Spots: steel pipe
8. Floating Spiral with Rust Spots: steel pipe
9. Dots and Lines: steel pipe
10. Spotted Spiral: steel pipe
11. Brush Stroke Spiral: steel pipe

Art installation location

Sun Valley Road and Spruce Avenue

On the pedestal in the north east sidewalk corner of Sun Valley Road and Spruce Avenue.



Ascension

Medium: Steel with rust patina

Dimensions: 132" high x 56" wide x 33" deep

Installation method/requirements: To be mounted to a minimum 4" thick x 24" x 48" concrete pad using (4) 3/8" concrete strike anchors.

Note: this is a new sculpture. The patina was applied to the top portion on 5-13-2024 and will naturally blend to the darker color of the bottom portion within a few weeks.



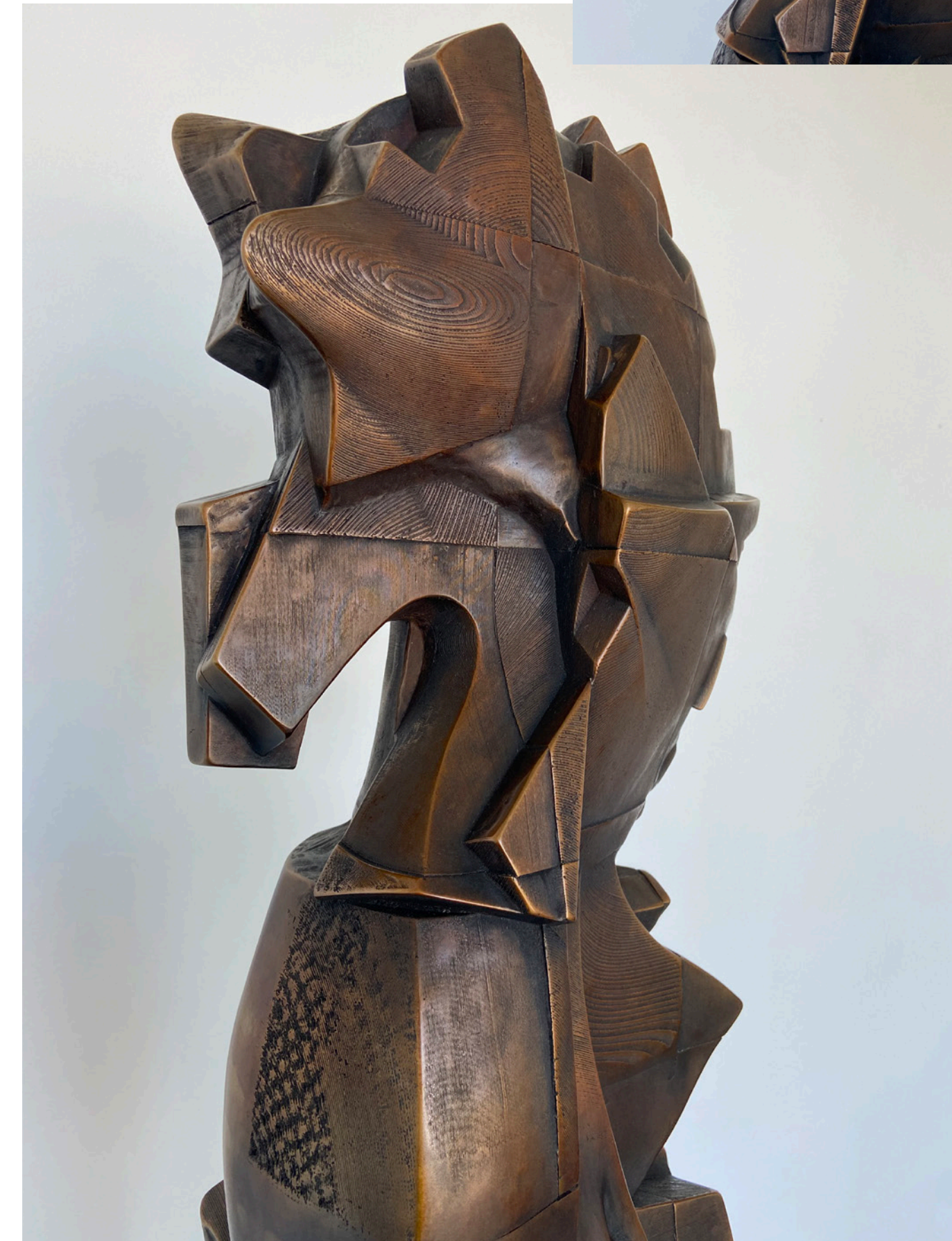
Mountain Horse

Medium: Bronze

Dimensions: 74 x 16 x 16 inches

Installation method/requirements:

This sculpture has a steel base with bolt holes. It can be welded to a steel pedestal or bolted into concrete.



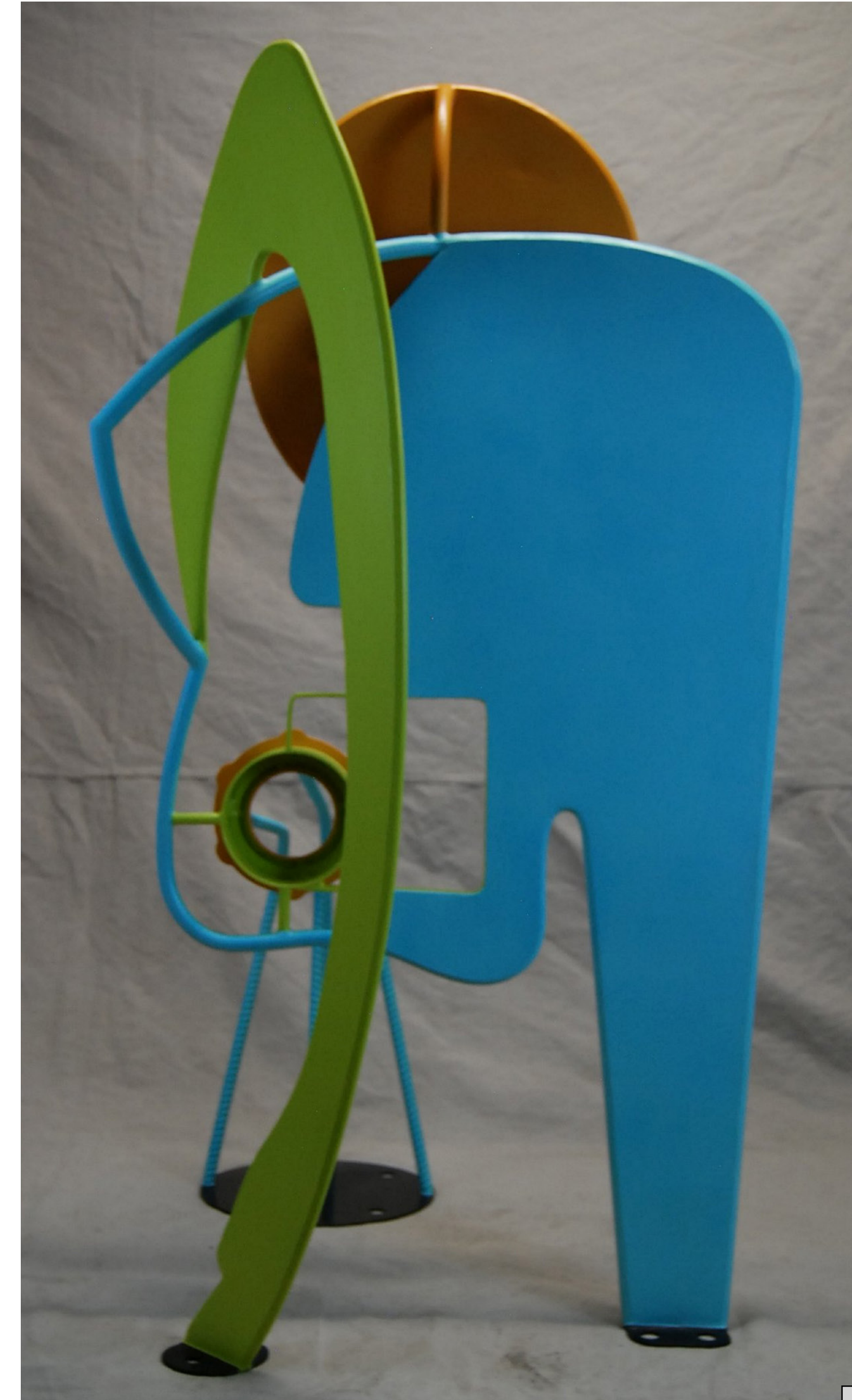
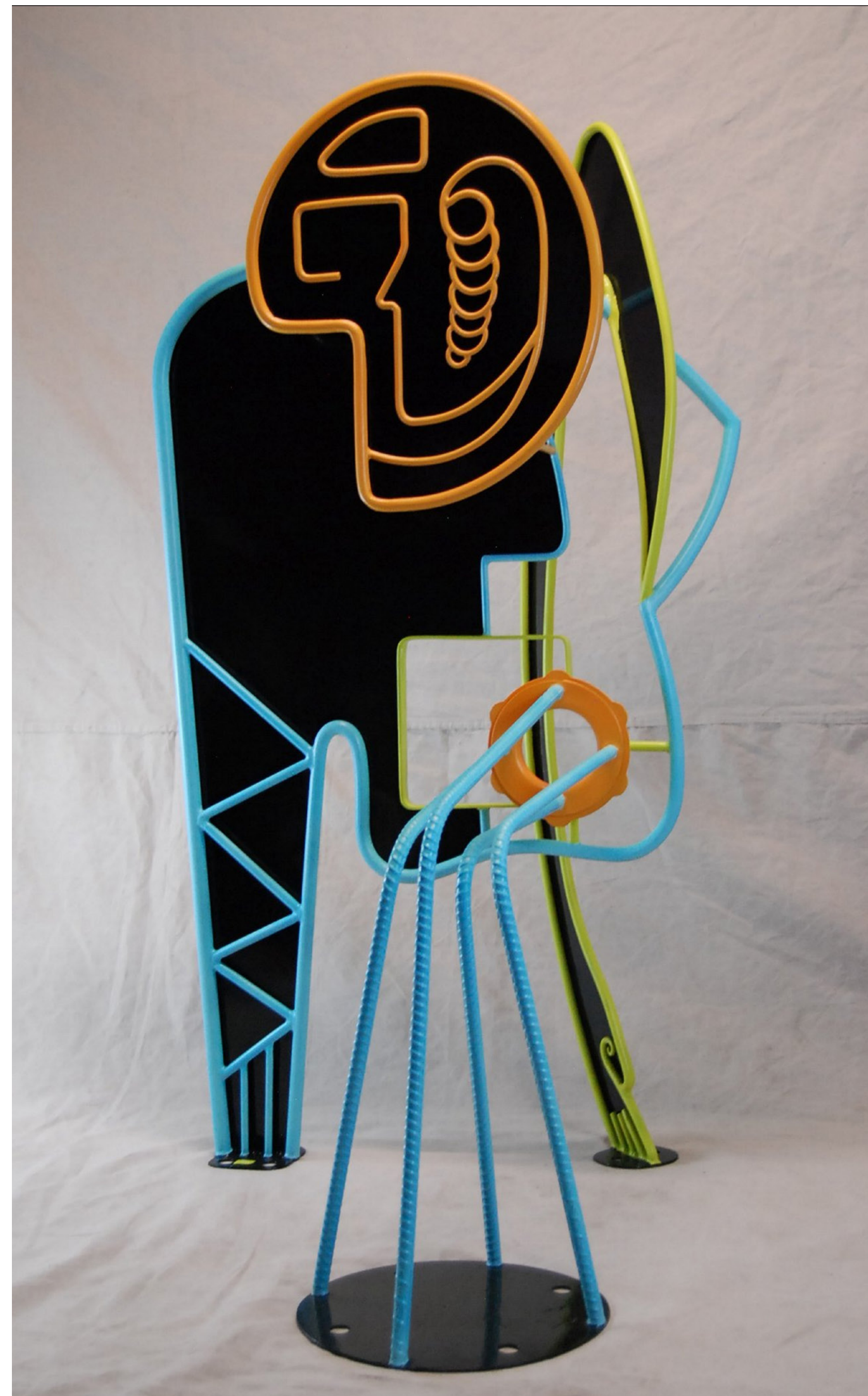
Modern Man

Medium: Direct Metal Sculpture (made out of mild steel, finished with oil base paint)

Dimensions: 55" x 30" x 37"

Installation method/requirements:

Mount/install with (10) 1/2" concrete lags. Electricity on site. Approx weight 150lb.



Epiphany

Medium: Direct Metal Sculpture (Picasso inspired horse: made out of mild steel and finished with oil base paint)

Dimensions: 105" x 36" x 89"

**Installation method/
requirements:**

Electricity on site. (5) 3/8 inch concrete lags. Weight approx. 250lbs. 2-3 additional men to help with placement.



Lively Spiral with Rust Spots

Medium: Steel Pipe

Dimensions: 102" x 24"
x24'

**Installation method/
requirements:** A
simple anchor bolt in
the cement to secure
the base



Floating Spiral with Rust Spots

Medium: Steel Pipe

Dimensions: 101" x 22"
x22"

**Installation method/
requirements:** A
simple anchor bolt in
the cement to secure
the base

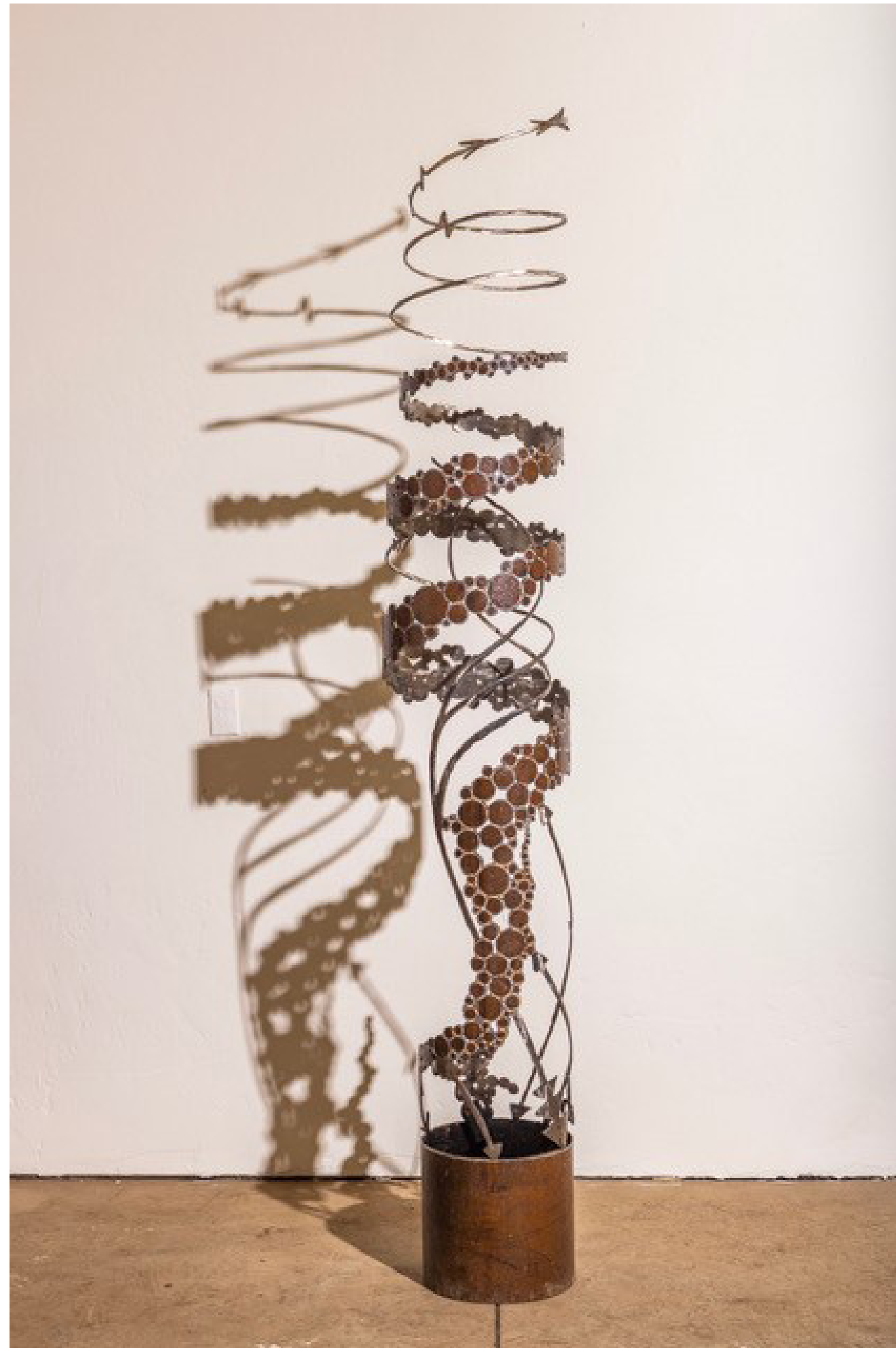


Dots and Lines

Medium: Steel Pipe

Dimensions: 96" x 18" x 18"

Installation method/ requirements: A simple anchor bolt in the cement to secure the base.



Spotted Spiral

Medium: Steel Pipe

Dimensions: 90" x 16" x 16"

**Installation method/
requirements:** A simple
anchor bolt in the cement to
secure the base.



Brush Stroke Spiral

Medium: Steel Pipe

Dimensions: 94"x 17"

**Installation method/
requirements:** A simple
anchor bolt in the cement to
secure the base.





City of Ketchum

KETCHUM ARTS COMMISSION MEETING AGENDA MEMO

Meeting Date: Staff Member/Dept:

Agenda Item:

Recommended Motion:

I approve the two artwork pieces selected by the majority of present Arts Commissioners to be installed for this year's Art on Fourth Exhibition.

Reasons for Recommendation:

Five qualified artists submitted 10 pieces of artwork for the Commission's Call for Artists for this year's Art on Fourth Exhibition.

All artists who submitted artwork for the Sun Valley and Spruce call to artists have agreed to have their artwork considered for the Art on 4th call as well.

All submissions appear to meet the installation requirements.

Policy Analysis and Background (non-consent items only):

Sustainability Impact:

None OR state impact here:

Financial Impact:

None OR Adequate funds exist in account: Adequate funds exist in account

Attachments:

- 1. Art installation locations
- 2. Ascension: steel with rust patina

3. Mountain Horse: bronze
4. Modern Man: direct metal sculpture
5. Transparencies in Time: Cuahpohualli embedded in ethnopoetic language poetry
6. Epiphany: direct metal sculpture
7. Lively Spiral with Rust Spots: steel pipe
8. Floating Spiral with Rust Spots: steel pipe
9. Dots and Lines: steel pipe
10. Spotted Spiral: steel pipe
11. Brush Stroke Spiral: steel pipe

Art installation locations

4th and Washington Avenue

Mid-block on 4th Street between Main and Washington Avenue (south of the asphalt Despo's Parking area)



Forest Service Park

North end of Town Square in the center patch of grass.



Ascension

Medium: Steel with rust patina

Dimensions: 132" high x 56" wide x 33" deep

Installation method/requirements: To be mounted to a minimum 4" thick x 24" x 48" concrete pad using (4) 3/8" concrete strike anchors.

Note: this is a new sculpture. The patina was applied to the top portion on 5-13-2024 and will naturally blend to the darker color of the bottom portion within a few weeks.



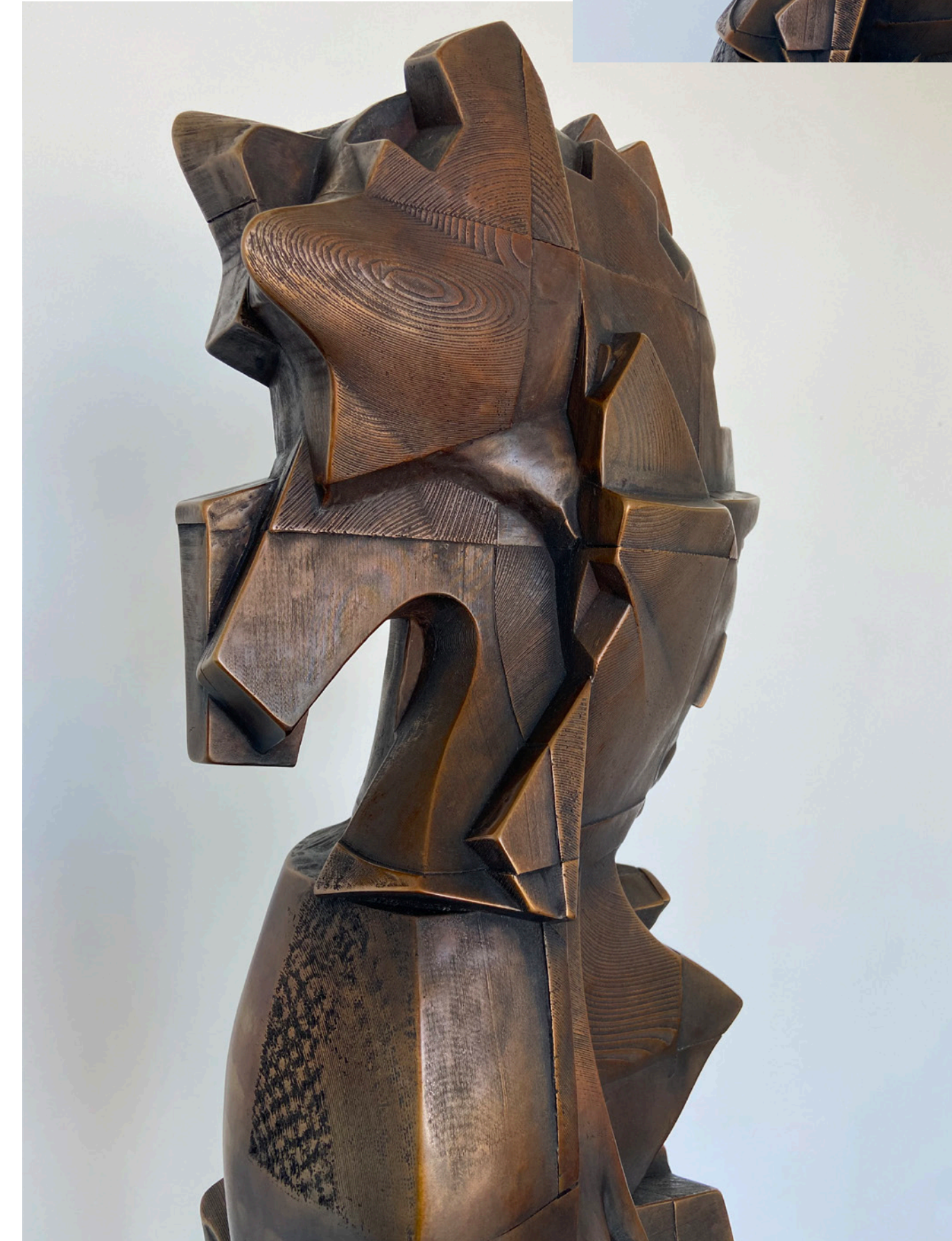
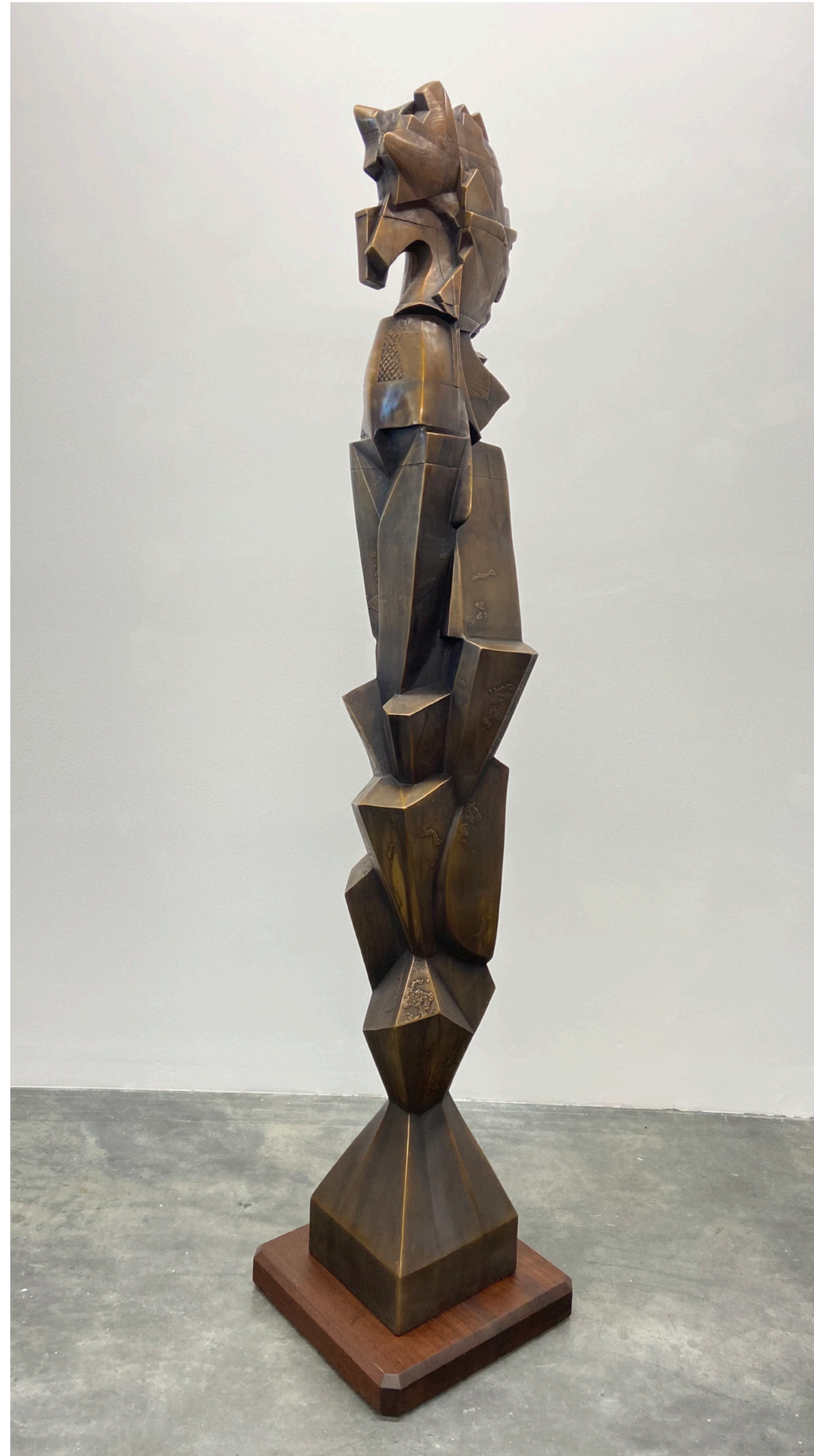
Mountain Horse

Medium: Bronze

Dimensions: 74 x 16 x 16 inches

Installation method/requirements:

This sculpture has a steel base with bolt holes. It can be welded to a steel pedestal or bolted into concrete.



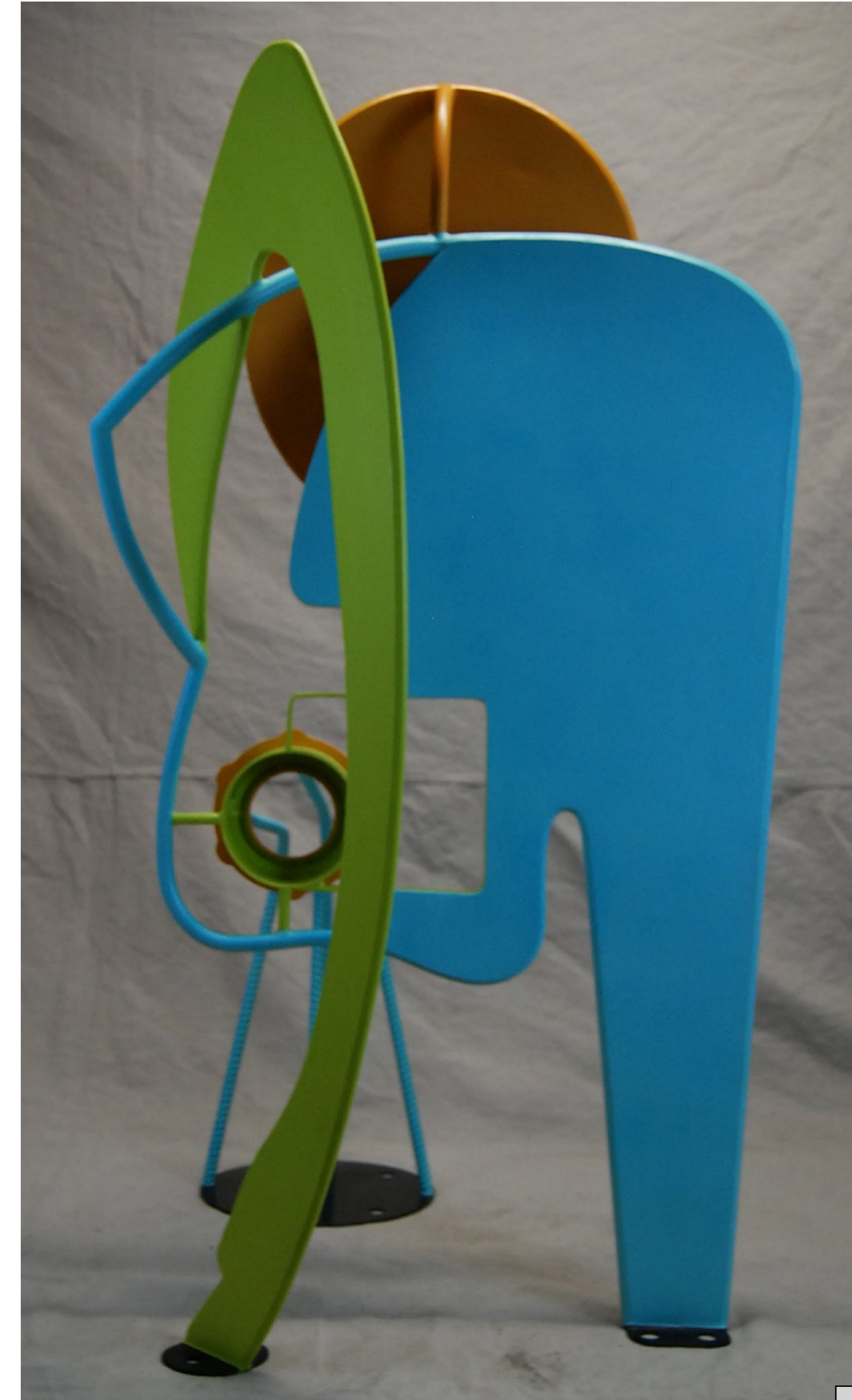
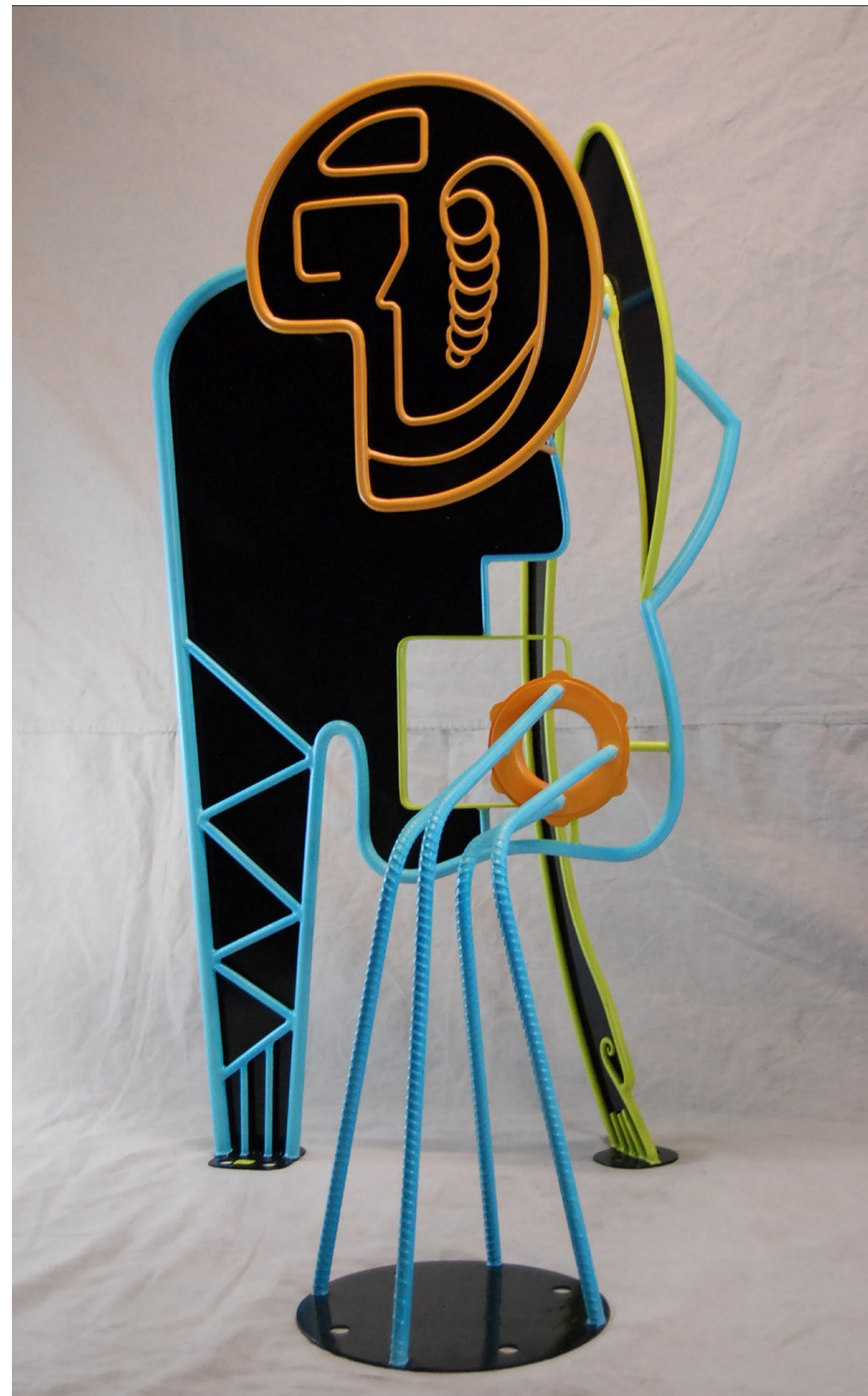
Modern Man

Medium: Direct Metal Sculpture (made out of mild steel, finished with oil base paint)

Dimensions: 55" x 30" x 37"

Installation method/requirements:

Mount/install with (10) 1/2" concrete lags. Electricity on site. Approx weight 150lb.



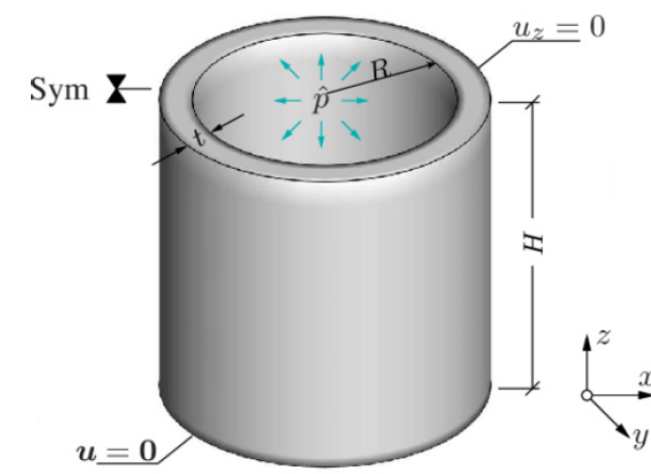
Transparencies in Time

Medium: Cuahpohualli embedded in ethnopoetic language poetry

Dimensions: 7' x 7' x 3' (opt. 1) or 8.5' x 8.5' x 3' (opt. 2)

Installation method/requirements: on-site construction required, which would take a couple months. Would also include multimedia powered by solar panels (audio playback, lighting, and ability to rotate the artwork)

Shape/construction



Similar artist installations



Artwork/ written poems displayed in the Plexiglass

Words locate silence: nahualli (Nahuatl) plural form of Nahual - speaking people / nombre que se dio a las naciones cubas que hablan la lengua mexicana [6] Lightning in the breads this poetic stream. All I got is the ink to bleed. The crows reflect black panels glass sheets and/or shiny threads humming birds razor sharp light indecent. Ghost hunt the plains. TTONALIL's tone's statistics, spirit, soul. Spirit returns are the essence one breathes. TEZCATLIPUCA, mirror mirror king as writing this blue lightning inside the temezcalitlapi sweet lodge ceremony. NEXTL's names condense / condense in the memories blue voices coalesce raindrops of flowers in new thoughts bright as sunrise burn night stars. TLAHUICZALPANTECUHLI's el surto de la auto-venus first light of dawn breaks past the jade its glass silks shreds language. We do not all see the same. metzli matlacay poetry speaks in words/facerate shard crate language. Nah-steepled in the bone stone pyramid corral-jeade soul earth-between skin earth red sky, emerald glass silks cuts, you breathe in-lore when conch thunderstorms in the shewee! etzucualitl macuil living proof of multiple dimen-code as silks splinters into and pseudonyms hidden...

Udicuahuatxer de las salinas -you can feel the coded in. So when it comes you got too be ready 7th becaea on quahuallit that a flutyllytranspantly/evacuity. Phend of locutitloteitl our aat chhuat/woman of the salt-dunes -blue and white- calendars overridelapses in the spacetime continuum. Today's mess in how ethereal entities survive hour - glass. Silks cuts what you're thinking edged/ heteroglyphic, stables in the neural picture are transcribing into ocean breeze. Energys in optical cortex simulated in between dreams. Weaved in the carbon -14 frame as pyramidal shift here: meld in the melanin

Transparent thoughts in the poolside eclipse that's hard you see. When there's a langu Age-but no one to speak it too Nahua/taqui/Purepecha huchan un picau -por mullista F.azca. Carry over eight how language bleed in yellow and/or suspended annotation. Adamantine steel. It's the child in me to breathe these images into 3 dimensions its Glass. 17P cycle guards chhcome aat/ill nahua/taqui/lls the period of repose. Tactacuepeltitl is the fullness transparency how these words were shard into/ Belowst visual cortex. Equamill's dark eyed scriber hollowed conodes carving Tezcatlipoca -read in the periphery. 1510 a nothe: teze (jywanid) pygms bleed Within this art an erased camera zoom you can read behind these words tales. Desert sands inscribed in the DNA matted ethics shard jagged flint. Terns encoded in a topography scarred with an unbalanced cross/double Helix 3 stripes on the right temple tear stripes of the jaguar how silence Weighs. Hayshah blunder dreams breathe into thalloodoosum Eagle feathers breeze the melanin darkens blue lightning night/waafage ceremony -spirits awaken the memory I landscapes. Slowly time engulfs streams of consciousness. 2,brats in the above count read a seven need period Seduction four silks. Farasico to edit/lovedo in Memoria and so (a hat breathing in multiple dimensions. Sun's retract rainbows kaleidoscope casts stars. Lobo Xocoyotzin there are transparencies the minds I. Winistom's lexicon of brown white lightning how words immaterial face-ratons in time. Step back and you will see a pyramid shaft in the (spao)lme condensate a cascade -when you palm your hands. Organic poets cut deep in the spiritlessness: displacement lateral en to que ves. Owe's reflect jade screens in plish dark forest whiteholoch shades of ceramem embedded ded in virides frosts. Petroglyph origins of the carbon -14frame: omeurs serates from geoglyphy & winds fissures! It's a satiation that u are reading stone words cut under-world corridors in Tonine. Besides u see invisible jaguar open scrolls.

Chicome Itzucuilil Almazotl. Yn Acatl

Chicome Itzucuilil Tlal Nahu Tezcatl

Epiphany

Medium: Direct Metal Sculpture (Picasso inspired horse: made out of mild steel and finished with oil base paint)

Dimensions: 105" x 36" x 89"

Installation method/ requirements:

Electricity on site. (5) 3/8 inch concrete lags. Weight approx. 250lbs. 2-3 additional men to help with placement.

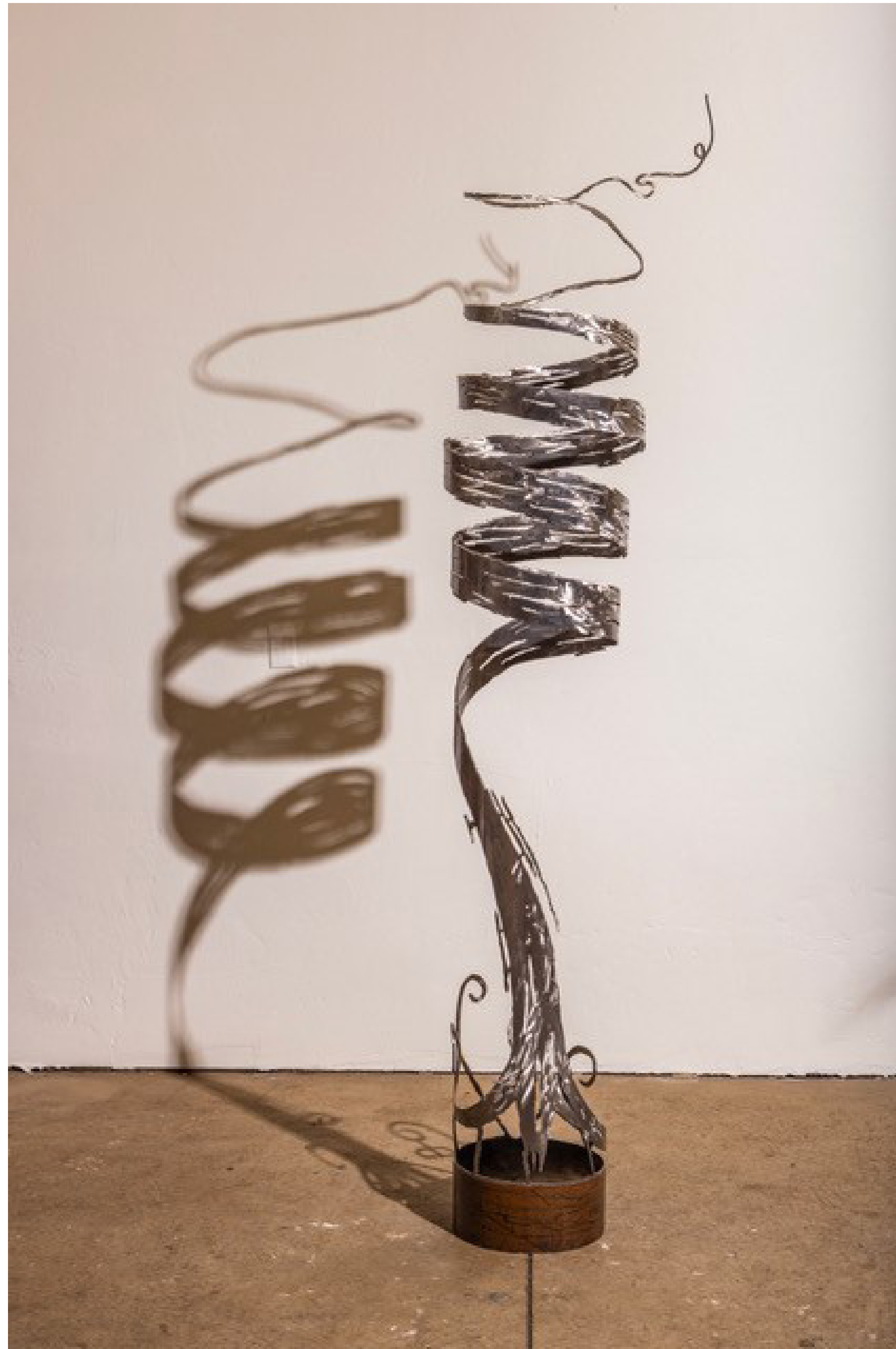


Lively Spiral with Rust Spots

Medium: Steel Pipe

Dimensions: 102" x 24"
x24'

**Installation method/
requirements:** A
simple anchor bolt in
the cement to secure
the base

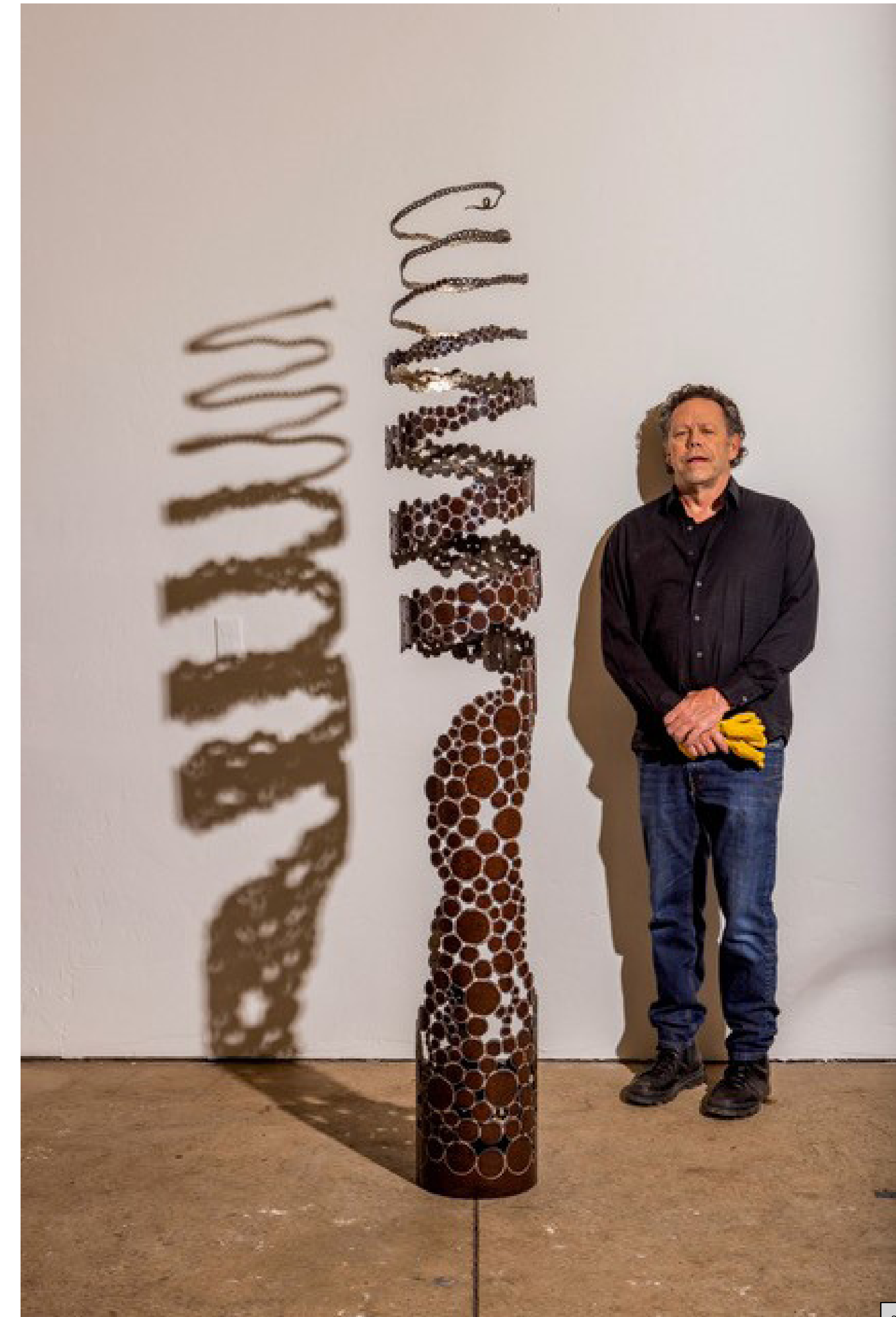


Floating Spiral with Rust Spots

Medium: Steel Pipe

Dimensions: 101" x 22"
x22"

**Installation method/
requirements:** A
simple anchor bolt in
the cement to secure
the base

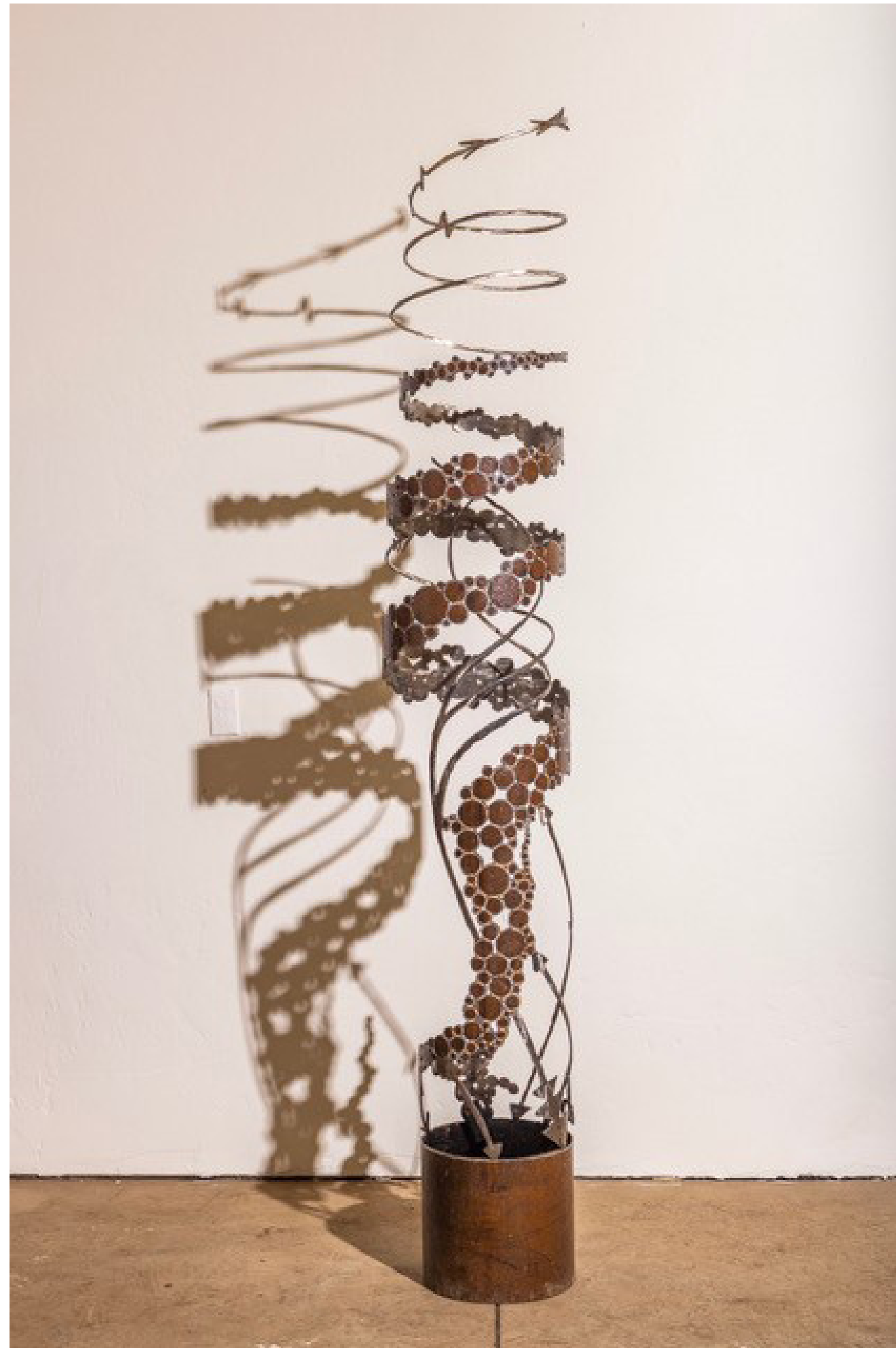


Dots and Lines

Medium: Steel Pipe

Dimensions: 96" x 18" x 18"

Installation method/ requirements: A simple anchor bolt in the cement to secure the base.



Spotted Spiral

Medium: Steel Pipe

Dimensions: 90" x 16" x 16"

**Installation method/
requirements:** A simple
anchor bolt in the cement to
secure the base.



Brush Stroke Spiral

Medium: Steel Pipe

Dimensions: 94"x 17"

**Installation method/
requirements:** A simple
anchor bolt in the cement to
secure the base.

