

BOARD OF PUBLIC WORKS

City of Kaukauna
Council Chambers
Municipal Services Building
144 W. Second Street, Kaukauna



Monday, December 04, 2023 at 6:00 PM

AGENDA

In-Person

1. Correspondence.
2. Discussion Topics.
 - [a.](#) Authorization to seek bids for Project 2-24 - W. Tobacnoir Street Area Utility Relay – Phase 1.
 - [b.](#) Authorization to seek bids for Project 4-24 – Asphalt Parking Lot Paving.
 - [c.](#) Draft Memorandum of Understanding (MOU) - Outagamie County Highway Department.
 - d. Update on Waste Ordinance Implementation.
 - e. Public Works Update.
3. Adjourn.

NOTICES

Notice is hereby given that a majority of the City Council will be present at the meeting of the Board of Public Works meeting scheduled for Monday, December 4, 2023 at 6:00 P.M. to gather information about a subject over which they have decision making responsibility.

IF REQUESTED THREE (3) DAYS PRIOR TO THE MEETING, A SIGN LANGUAGE INTERPRETER WILL BE MADE AVAILABLE AT NO CHARGE.



City of Kaukauna
Board of Public Works
tdc/engr dept

December 4, 2023

Agenda Item #2a

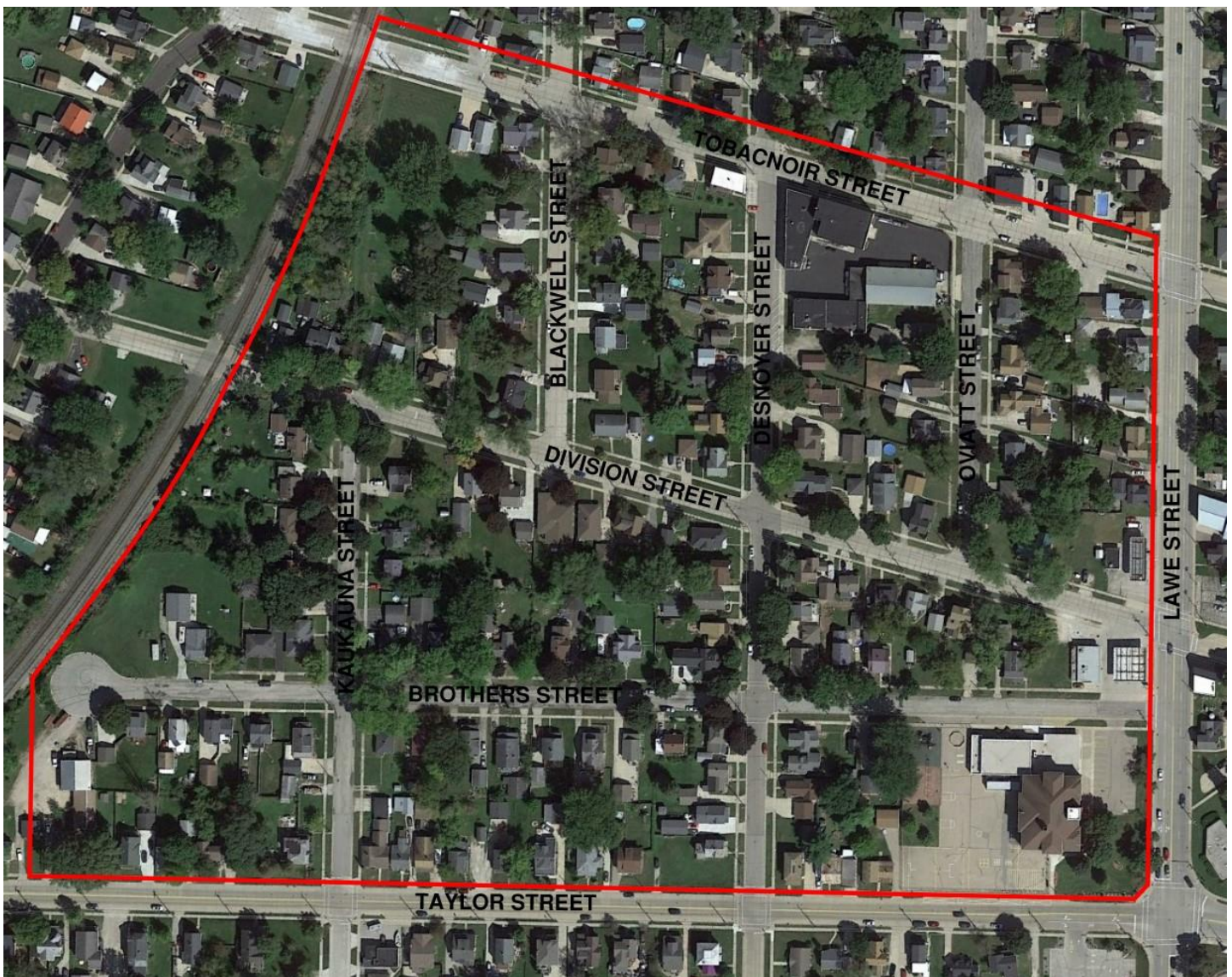
Authorization to seek bids for Project #2-24, W. Tobacnoir Street Area Utility Relay – Phase 1 (Brothers Street, Kaukauna Street, Desnoyer Street, Division Street, Blackwell Street, Oviatt Street)

Background

The Engineering Department is completing plans for our annual utility relay project with Kaukauna Utilities. The proposed project is in the Taylor Street to Tobacnoir Street neighborhoods; a map is shown below. The project will include replacement of sanitary sewer, water mains, private laterals from the main to the homes, temporary asphalt overlay, and restoration of the affected areas.

Recommended Action

Motion to authorize the Engineering Department to seek bids for Project #2-24, W. Tobacnoir Street Area Utility Relay – Phase 1





City of Kaukauna
Board of Public Works – December 4th, 2023
JJB/engr dept

Agenda Item #2B
Authorization to seek bids for Project #4-24 Asphalt Paving

Paving Areas:

- Pool Road – Dodge Street to 650' south of Dodge Street
- Pool Building Parking Lot – west of new Pool Building, east of Pool Road
- South Pool Road Parking Lots – Boyd Avenue to 430' west, both lots
- Horseshoe Park Parking Lot – north of Twelfth Street, 370' east of Crooks Avenue

Background

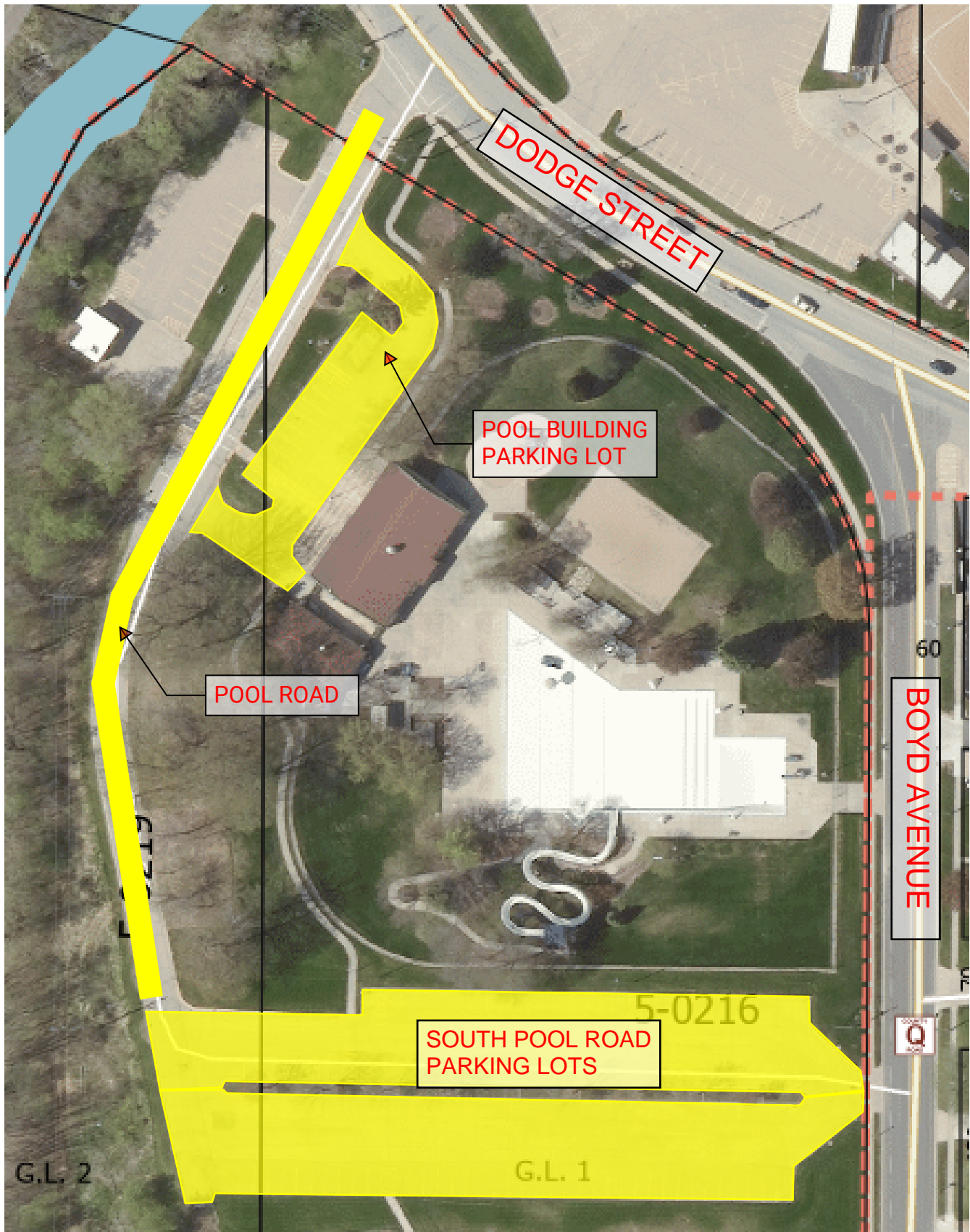
The Engineering Department has completed survey and is finalizing design for asphalt paving for the above listed road and parking lots (also as shown on the attached maps.)

The milling and asphalt paving of the parking lots and road outlined in the maps are in need of asphalt surface replacement, this project will include replacement of some storm sewer in the South Pool Road Parking Lots.

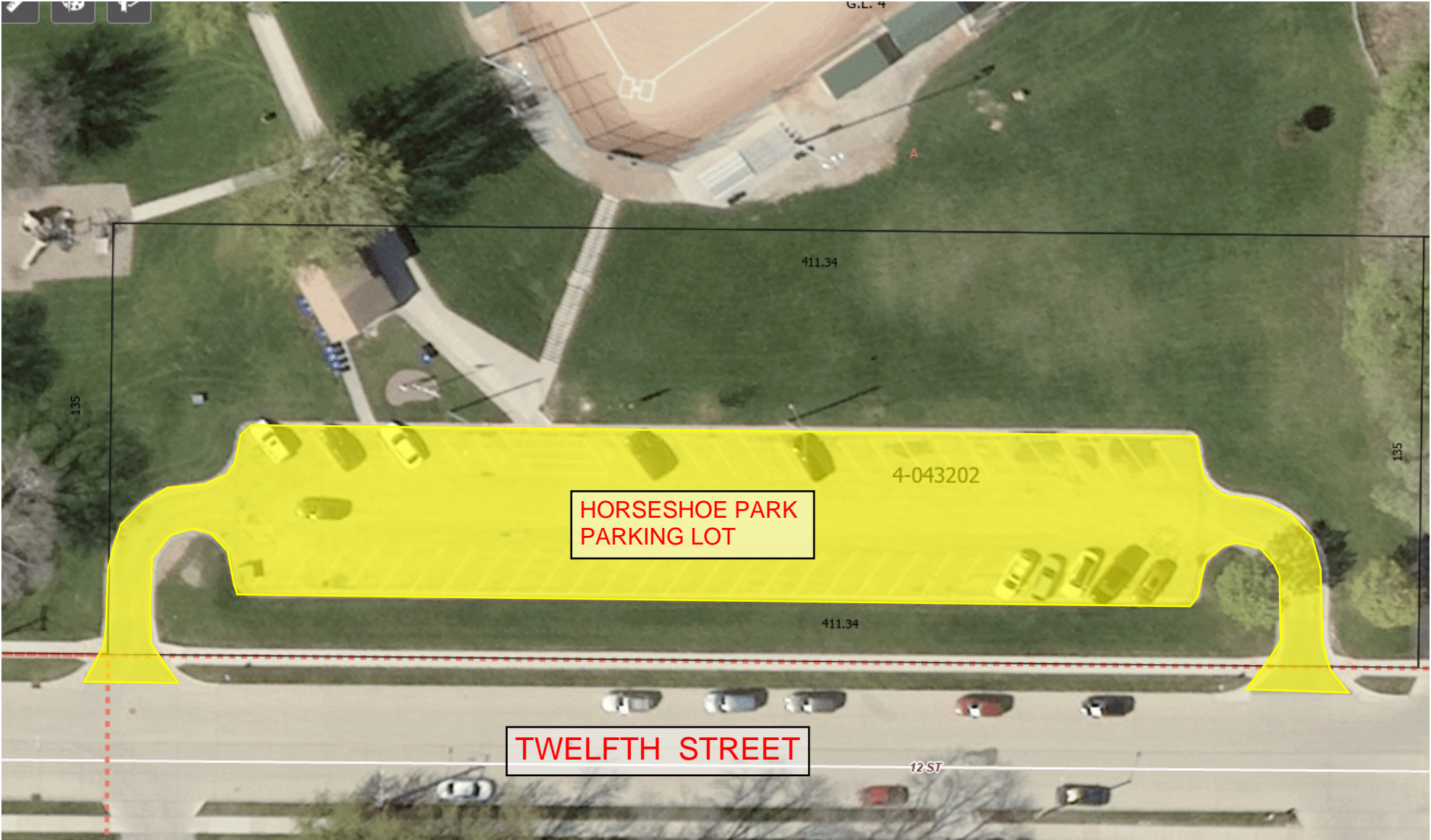
Recommended Action

Motion to authorize the Engineering Department to seek bids for Project #4-24 Asphalt Paving

POOL ROAD AND PARKING LOTS



HORSESHOE PARK PARKING LOT





Highway Department

1313 Holland Road, Appleton, WI 54911-8947

Phone: (920) 832-5673 Fax: (920) 832-2032

Visit our website at www.outagamie.org

Find us on  @Outagamie County Highway Department

MEMORANDUM OF UNDERSTANDING OF COUNTY HIGHWAY MAINTENANCE RESPONSIBILITIES

This Memorandum of Understanding establishes the highway maintenance responsibilities for Outagamie County highways within the City of Kaukauna. This understanding is in regards to maintenance operations only, and does not change how capital project costs are shared. The maintenance responsibilities are designated as outlined on the attached **Exhibit A**, and may be modified at any time based on mutual written agreement by both Outagamie County and the municipality named below.

BY: _____

DATE: _____

John W. Neumeier
Director of Public Works / City Engineer
City of Kaukauna

BY: _____

DATE: _____

Dean E. Steingraber
Highway Commissioner
Outagamie County

Att. Exhibit A, City of Kaukauna Maintenance Overview

Exhibit A: City of Kaukauna

| | | Pavement Maintenance | Curb & Gutter Maintenance | Storm Sewer Maintenance ² | Pavement Marking ¹ | Signage ¹ | Traffic Signals | Pedestrian Signals & Warning Devices | Bicycle Signage & Pavement Markings | Street Lighting | Sidewalk Maintenance | Tree & Landscaping Maintenance | Tree & Landscaping Maintenance | Ditch Mowing | Winter Maintenance | Street Sweeping | Project-Specific Agreement? |
|---|---------------------------------|----------------------|---------------------------|--------------------------------------|-------------------------------|----------------------|---------------------|--------------------------------------|-------------------------------------|-----------------|----------------------|--------------------------------|--------------------------------|--------------|--------------------|-----------------|-----------------------------|
| | County Highway Segment | | | | | | | | | | | (Islands & RAB) | (Terraces) | | | | (Yes / No) |
| | Rosehill Road (CTH CC) | | | | | | | | | | | | | | | | |
| | I-41 to Evergreen Dr | County | Kaukauna | Kaukauna (B) | County | County | N/A | Kaukauna | Kaukauna | Kaukauna | Kaukauna | N/A | Kaukauna | County | County | Kaukauna | No |
| | E College Avenue (CTH CE) | | | | | | | | | | | | | | | | |
| | DeBruin Rd to Crooks Ave | County | Kaukauna | Kaukauna (A) | County | County | N/A | Kaukauna | Kaukauna | N/A | Kaukauna | County | Kaukauna | County | County | County | No |
| | Crooks Ave to Loderbauer Rd | County | Kaukauna | Kaukauna (A) | County | County | N/A | Kaukauna | Kaukauna | N/A | Kaukauna | N/A | Kaukauna | County | County | County | Yes |
| | Loderbauer Rd to Weiler Rd | County | Kaukauna | Kaukauna (B) | County | County | Kaukauna | Kaukauna | Kaukauna | N/A | Kaukauna | N/A | Kaukauna | County | County | Kaukauna | Yes |
| | Debruin Road (CTH HH) | | | | | | | | | | | | | | | | |
| # | E College Avenue to State St | County | Kaukauna | Kaukauna (B) | County | County | N/A | Kaukauna | CL/Kaukauna | Other | Kaukauna | County | Kaukauna | County | County | Kaukauna | Yes |
| | Lawe Street (CTH J) | | | | | | | | | | | | | | | | |
| | Delanglade St to Lamplighter Dr | County | Kaukauna | Kaukauna (A) | County | County | Kaukauna | Kaukauna | Kaukauna | Kaukauna | Kaukauna | N/A | N/A | N/A | County (24') | Kaukauna | Yes |
| # | I-41 to CTH JJ/Edgewood Dr | County | Kaukauna | N/A | County | County | N/A | Kaukauna | Kaukauna | Kaukauna | Kaukauna | County | N/A | County | County | County | Yes |
| | North Avenue (CTH OO) | | | | | | | | | | | | | | | | |
| | Joan Ct to STH 55 | County | Kaukauna | Kaukauna (A) | County | County | County ³ | Kaukauna | Kaukauna | Kaukauna | Kaukauna | Kaukauna | Kaukauna | County | County | Kaukauna | No |
| | STH 55 to Kelso Rd | County | Kaukauna | Kaukauna (A) | County | County | N/A | Kaukauna | Kaukauna | Kaukauna | Kaukauna | Kaukauna | N/A | County | County | Kaukauna | No |
| | Hillcrest Drive (CTH Q) | | | | | | | | | | | | | | | | |
| | E College Ave to Dodge St | County | Kaukauna | Kaukauna (A) | County | County | Kaukauna | Kaukauna | Kaukauna | Kaukauna | Kaukauna | N/A | Kaukauna | County | County (24') | Kaukauna | Yes |
| | Dodge Street (CTH Z) | | | | | | | | | | | | | | | | |
| | DeBruin Rd to Crooks Ave | County | Kaukauna | Kaukauna (A) | County | County | N/A | Kaukauna | Kaukauna | Kaukauna | Kaukauna | N/A | Kaukauna | N/A | County (24') | Kaukauna | No |
| | Crooks Ave to Island St | Kaukauna | Kaukauna | Kaukauna (A) | County | County | N/A | Kaukauna | Kaukauna | Kaukauna | Kaukauna | N/A | Kaukauna | N/A | Kaukauna | Kaukauna | No |
| | Island St to Haas Rd | County | Kaukauna | Kaukauna (A) | County | County | N/A | Kaukauna | Kaukauna | Kaukauna | Kaukauna | N/A | Kaukauna | County | County (24') | Kaukauna | No |

1 Roadway only; pedestrian signing & markings/crosswalks are responsibility of the municipality

2 Includes casting and adjoining curb and gutter

 A) For existing storm sewer system(s): Both parties agree to jointly inspect and/or televise system before City accepts maintenance responsibilities. Cost responsibility for any necessary repair(s) to be determined on a case-by-case basis.

 B) For new construction: City accepts all maintenance responsibilities.

3 County OO & Gertrude intersection, flashing stop sign

East side of roadway only

@ West side of roadway only

DRAFT

For Review