

BOARD OF PUBLIC WORKS

City of Kaukauna
Council Chambers
Municipal Services Building
144 W. Second Street, Kaukauna



Wednesday, February 19, 2025 at 6:00 PM

AGENDA

In-Person and Remote Teleconference via ZOOM

1. Correspondence.
2. Discussion Topics.
 - a. Recommendation to award Project #2-25 –Sanitary Sewer and Water Main Joint Utility Project.
 - b. Authorization to seek bids for Project #9-25 – Linda Court Utility Relay and K4 Stormwater Basin Improvements.
 - c. State/Municipal Financial Agreement for (SMFA) for County Trunk Highway(CTH) CC/Rosehill Road and CTH J/Lawe Street.
3. Adjourn.

NOTICES

Notice is hereby given that a majority of the City Council will be present at the meeting of the Board of Public Works meeting scheduled for Wednesday, February 19, 2025 at 6:00 P.M. to gather information about a subject over which they have decision making responsibility.

IF REQUESTED THREE (3) DAYS PRIOR TO THE MEETING, A SIGN LANGUAGE INTERPRETER WILL BE MADE AVAILABLE AT NO CHARGE.

MEETING ACCESS INFORMATION:

You can access this meeting by one of three methods: from your telephone, computer, or by an app. Instructions are below.

To access the meeting by telephone:

1. Dial 1-312-626-6799
2. When prompted, enter Meeting ID 234 605 4161 followed by #
3. When prompted, enter Password 54130 followed by #

To access the meeting by computer:

1. Go to <http://www.zoom.us>
2. Click the blue link in the upper right hand side that says Join a Meeting
3. Enter Meeting ID 234 605 4161
4. Enter Password 54130
5. Allow Zoom to access your microphone or camera if you wish to speak during the meeting

To access the meeting by smartphone or tablet:

1. Download the free Zoom app to your device
2. Click the blue button that says Join a Meeting
3. Enter Meeting ID 234 605 4161
4. Enter Password 54130
5. Allow the app to access your microphone or camera if you wish to speak during the meeting

Members of the public will be muted unless there is an agenda item that allows for public comment or if a motion is made to open the floor to public comment.



MEMO

Engineering Department

To: Board of Public Works
 From: Taylor Conger
 Date: February 19th, 2025
 Re: **Agenda Item #2a:** Recommendation to award Project #2-25 – Sanitary Sewer and Water Main Joint Utility Project

Background information:

The Engineering Department has reviewed and analyzed the bids from Feaker & Sons, Kruczek Construction, Carl Bowers & Sons, DeGroot Inc., Advance Construction, Dorner Inc., David Tenor Corp., and PTS Contractors received on February 5th, 2025 at 4:00pm for the 2-25 Sanitary Sewer and Water Main Joint Utility Project. The Engineering Department received eight bids for this project and compared said bids against the Engineer’s estimate that was put together prior to bid opening. The Engineer’s estimate is compiled utilizing previous years’ prices and adjusted for inflation and changes in work descriptions. The lowest bidder was \$81,080.65 lower than the Engineer estimate, and was \$83,436.65 lower than the second lowest bidder, which shows that the City is getting a great price to complete this work. Seven of the eight bidders were within \$490,000 which shows that the bids were competitive, with the four lowest bidders within \$200,000. See attached Bid Tabulation.

Strategic Plan:

N/A

Budget:

Funds for this project will come from Sanitary Utility funds and Capital Borrowing. Estimated City expense to be approximately \$850,000 with the remaining costs to be invoiced to Kaukauna Utilities.

Staff Recommended Action:

Motion to Award Project #2-25 Sanitary Sewer and Water Main Joint Utility Project to Carl Bowers & Sons, Kaukauna, WI for Base Bid Units A thru E and Alternate Unit F, a total amount of \$3,671,905.15.

UNIT C - GENERAL/RESTORATION

Table with columns: ITEM, DESCRIPTION, QUANTITY, UNITS, UNIT PRICE, TOTAL PRICE, UNIT PRICE, TOTAL PRICE, UNIT PRICE, TOTAL PRICE, UNIT PRICE, TOTAL PRICE, UNIT PRICE, TOTAL PRICE, UNIT PRICE, TOTAL PRICE, UNIT PRICE, TOTAL PRICE, UNIT PRICE, TOTAL PRICE. Rows C1 to C13 and a summary row.

Summary table with columns: SUB-TOTAL UNIT A, SUB-TOTAL UNIT B, SUB-TOTAL UNIT C, TOTAL BID, TOTAL BASE BID. Values in thousands of dollars.

PART B: INDUSTRIAL PARK WATER MAIN

MALONEY ROAD, PROSPECT LANE, BADGER ROAD, EAST LINE ROAD, TOWER DRIVE

Main table for Unit D - Water Mains & Services. Columns include contractor names (CARL BOWERS & SONS, DORNER, INC., KRUCZEK CONSTRUCTION, FEAKE & SONS, DeGROOT, INC., PTS CONTRACTORS, DAVID TENOR CORP, ADVANCE CONSTRUCTION) and item details. Rows D1 to D21 and a summary row.

UNIT E - GENERAL/RESTORATION

Table with columns: ITEM, DESCRIPTION, QUANTITY, UNITS, UNIT PRICE, TOTAL PRICE, UNIT PRICE, TOTAL PRICE, UNIT PRICE, TOTAL PRICE, UNIT PRICE, TOTAL PRICE, UNIT PRICE, TOTAL PRICE, UNIT PRICE, TOTAL PRICE, UNIT PRICE, TOTAL PRICE, UNIT PRICE, TOTAL PRICE. Rows E1 to E8.

E9	Furnish, install, and maintain traffic control, 1 Lump Sum, all complete for:	1	LS	\$3,725.00	\$3,725.00	\$6,181.00	\$6,181.00	\$4,500.00	\$4,500.00	\$4,000.00	\$4,000.00	\$4,848.00	\$4,848.00	\$4,150.00	\$4,150.00	\$4,100.00	\$4,100.00	\$3,925.00	Item 2.a.
E10	Furnish mobilization/demobilization of all needed equipment, 1 Lump Sum, all complete for:	1	LS	\$72,000.00	\$72,000.00	\$19,315.00	\$19,315.00	\$6,000.00	\$6,000.00	\$13,600.00	\$13,600.00	\$19,087.99	\$19,087.99	\$2,650.00	\$2,650.00	\$3,000.00	\$3,000.00	\$23,300.00	
UNIT TOTAL				\$242,985.00	\$242,985.00	\$211,062.00	\$211,062.00	\$279,971.00	\$279,971.00	\$342,550.00	\$342,550.00	\$445,740.99	\$445,740.99	\$356,705.40	\$356,705.40	\$384,600.00	\$384,600.00	\$338,225.00	
SUB-TOTAL UNIT D				\$1,456,087.18	\$1,456,087.18	\$1,503,581.00	\$1,503,581.00	\$1,529,221.57	\$1,529,221.57	\$1,400,952.00	\$1,400,952.00	\$1,565,396.54	\$1,565,396.54	\$1,546,315.00	\$1,546,315.00	\$1,673,141.00	\$1,673,141.00	\$1,645,505.18	
SUB-TOTAL UNIT E				\$242,985.00	\$242,985.00	\$211,062.00	\$211,062.00	\$279,971.00	\$279,971.00	\$342,550.00	\$342,550.00	\$445,740.99	\$445,740.99	\$356,705.40	\$356,705.40	\$384,600.00	\$384,600.00	\$338,225.00	
TOTAL BID				\$1,699,072.18	\$1,699,072.18	\$1,714,643.00	\$1,714,643.00	\$1,809,192.57	\$1,809,192.57	\$1,743,502.00	\$1,743,502.00	\$2,011,137.53	\$2,011,137.53	\$1,903,020.40	\$1,903,020.40	\$2,057,741.00	\$2,057,741.00	\$1,983,730.18	
TOTAL BID ALL UNITS A-E				\$3,569,405.15	\$3,569,405.15	\$3,652,841.80	\$3,652,841.80	\$3,672,222.22	\$3,672,222.22	\$3,765,363.10	\$3,765,363.10	\$3,988,151.25	\$3,988,151.25	\$4,023,556.00	\$4,023,556.00	\$4,058,083.90	\$4,058,083.90	\$4,504,162.15	

ALTERNATE UNIT F - CONCRETE ITEMS IN INDUSTRIAL PARK																			
ITEM	DESCRIPTION	QUANTITY	UNITS	UNIT PRICE	TOTAL PRICE	UNIT PRICE	TOTAL PRICE	UNIT PRICE	TOTAL PRICE	UNIT PRICE	TOTAL PRICE	UNIT PRICE	TOTAL PRICE	UNIT PRICE	TOTAL PRICE	UNIT PRICE	TOTAL PRICE	UNIT PRICE	TOTAL PRICE
F1	Furnish and install 8" Doweled Concrete Pavement, 1250 square yards, more or less, all complete for:	1250	SY	\$80.00	\$100,000.00	\$88.00	\$110,000.00	\$87.00	\$108,750.00	\$85.00	\$106,250.00	\$85.85	\$107,312.50	\$85.00	\$106,250.00	\$99.00	\$123,750.00	\$85.00	\$106,250.00
F2	Furnish and install materials to Adjust Manholes, 5 each, more or less, all complete for:	5	EA	\$500.00	\$2,500.00	\$651.00	\$3,255.00	\$695.00	\$3,475.00	\$700.00	\$3,500.00	\$858.50	\$4,292.50	\$665.00	\$3,325.00	\$773.00	\$3,865.00	\$500.00	\$2,500.00
UNIT TOTAL				\$102,500.00	\$102,500.00	\$113,255.00	\$113,255.00	\$112,225.00	\$112,225.00	\$109,750.00	\$109,750.00	\$111,605.00	\$111,605.00	\$109,575.00	\$109,575.00	\$127,615.00	\$127,615.00	\$108,750.00	



MEMO

Engineering Department

To: Board of Public Works
 From: Taylor Conger
 Date: February 19th, 2025
 Re: **Agenda Item #2b:** Authorization to seek bids for Project #9-25 – Linda Court Utility Relay and K4 Stormwater Basin Improvements

Background information:

The Engineering Department is completing plans with Kaukauna Utilities for a utility relay/construction project. A main focus of this project will be to provide Stormwater storage and relieve flooding caused by the flow restrictions within the K4 Basin, specifically in the Linda Court area. Additional work on this project will replace failing water mains, sanitary sewer mains, and services as well as providing turf restoration and an asphalt overlay. Work would be restricted to summer months in an effort to limit any disturbance to school traffic. A map depicting the work locations is shown on the following page.

Strategic Plan:

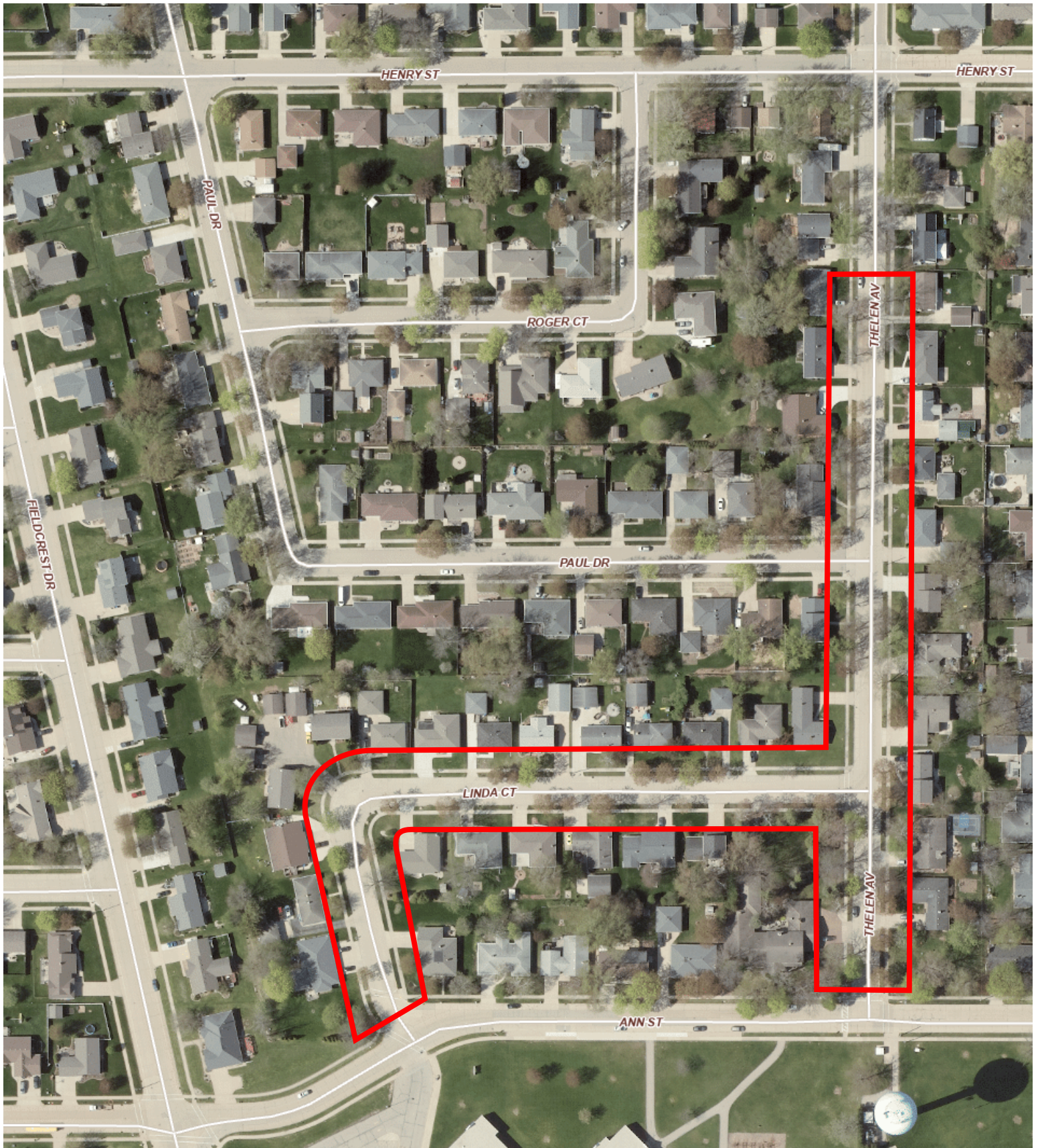
N/A

Budget:

Funds for this project will come from multiple sources, including Sanitary and Stormwater Utility funds, capital borrowing, and Kaukauna Utilities. Total estimated project cost is \$1.5 Million.

Staff Recommended Action:

Authorize the Engineering Department to seek bids for Project #9-25, Linda Court Utility Relay and K4 Stormwater Basin Improvements.





**ORIGINAL
STATE/MUNICIPAL
FINANCIAL AGREEMENT FOR
A STATE – LET HIGHWAY
PROJECT**

Date: 1/28/2025
ID: 1130-66-82 (Design: 1130-63-01)
IH 41
Title: Appleton – De Pere
Limits: Buchanan St Overpass
County: Outagamie
Roadway Length:0.188 miles

The signatory Village of Little Chute, City of Kaukauna, and Outagamie County, hereinafter called the Municipality, through its undersigned duly authorized officers or officials, hereby requests the State of Wisconsin Department of Transportation, hereinafter called the State, to initiate and affect the highway or street improvement hereinafter described.

The authority for the Municipality to enter into this agreement with the State is provided by Section 86.25(1), (2), and (3) of the Statutes.

NEEDS AND ESTIMARY SUMMARY:

Existing Facility - Describe and give reason for request:

IH 41, which passes below the Buchanan Street Overpass, has four travel lanes (two in each direction), is congested and sees a higher rate of crashes than similarly configured freeways in Wisconsin. By federal standards, the project area has multiple roadway design deficiencies, and much of the pavement and several bridges are nearing the end of their useful service lives and must be replaced.

Much of the original pavement on IH 41 was built in the 1960’s and has reached the end of its useful life, meaning further rehabilitation are no longer cost-effective. The road also has narrow shoulders, outdated ramp designs, and interchanges spaced too closely to one another. As part of this project, the Buchanan Street Overpass requires improvements to meet interstate vertical requirements, design year traffic projections, and roadway approach reconstruction to match the new structure.

Proposed Improvement – Nature of work:

The proposed Buchanan Street Overpass project will replace the existing 4-span concrete girder bridge structure (B-44-0038) over IH 41 with a new 2-span concrete girder bridge structure (B-44-0332). The new structure will be 206.5-ft in length and have a 36-ft clear width (12-ft lane and 6-ft bicycle accommodation in each direction). Additionally, the structure will have 6-ft wide pedestrian accommodation on each side of the structure separated from traffic by a single slope parapet. To match into the new bridge structure, approximately 800-ft of roadway approach reconstruction is proposed. The proposed urban roadway section consists of a 12-ft lane and 6-ft bicycle accommodation in each direction flanked by 6-in vertical faced curb and a 6-ft width of sidewalk directly behind the back of curb along the west side and east side. The proposed approach roadway will be constructed with 8-in concrete pavement, with 25-ft HMA pavement transitions at each end of the project. A retaining wall (R-44-0057) is proposed in the northwest quadrant of IH 41/Buchanan Street to minimize impacts to the adjacent local roadway. This project also includes community sensitive design (CSD) elements for the Holland Rd, Vandenbroek Rd, CTH N, Rose Hill Road (CTH CC) and CTH J bridges over IH 41.

Describe non-participating work included in the project and other work necessary to finish the project completely which will be undertaken independently by the municipality:

Non-participating work is not necessary to finish the project, but the Municipality has requested a 100% non-participating category be included to be able to address any unanticipated non-participating needs during construction.

SUMMARY OF COSTS

¹ Phase	Total Est. Cost	Federal/State Funds	%	Outagamie County	%	Village of Little Chute	%	City of Kaukauna	%	
Design Engineering	N/A	N/A		\$0.00	0%	\$0.00	0%	\$0.00	0%	
Real Estate Acquisition	N/A	N/A		\$0.00	0%	\$0.00	0%	\$0.00	0%	
Municipal Utility Coordination	N/A	N/A		\$0.00	0%	\$0.00	0%	\$0.00	0%	
²Construction: 1130-66-82										
Category	Description									
1000	Roadway	\$1,867,440.27	\$1,867,440.27	100%	\$0.00	0%	\$0.00	0%	\$0.00	0%
1100	Lighting	\$30,762.50	\$30,762.50	100%	\$0.00	0%	\$0.00	0%	\$0.00	0%
1400	Buchanan St CSD Items ³	\$48,426.50	\$38,741.20	80% MAX	\$4,842.65	10% +BAL	\$4,842.65	10% +BAL	\$0.00	0%
1410	Holland Road CSD Items ⁴	\$32,628.38	\$26,102.70	80% MAX	\$3,262.84	10% +BAL	\$3,262.84	10% +BAL	\$0.00	0%
1420	Vandenbroek Road CSD Items ⁵	\$34,937.00	\$27,949.60	80% MAX	\$3,493.70	10% +BAL	\$3,493.70	10% +BAL	\$0.00	0%
1430	CTH N Interchange CSD Items ⁶	\$27,643.13	\$22,114.50	80% MAX	\$2,764.32	10% +BAL	\$2,764.31	10% +BAL	\$0.00	0%
1440	Rose Hill Road (CTH CC) CSD Items ⁷	\$32,536.38	\$26,029.10	80% MAX	\$3,253.64	10% +BAL	\$1,626.82	5% +BAL	\$1,626.82	5% +BAL
1450	CTH J Interchange CSD Items ⁸	\$44,047.88	\$35,238.30	80% MAX	\$4,404.79	10% +BAL	\$0.00	0%	\$4,404.79	10% +BAL
1600	Local/Non-Participating, Village of Little Chute	\$26.45	\$0.00	0%	\$0.00	0%	\$26.45	100%	\$0.00	0%
1610	Sidewalk, Village of Little Chute	\$71,360.95	\$57,088.76	80%	\$0.00	0%	\$14,272.19	20%	\$0.00	0%
1800	100% State Funded	\$1,150.00	\$1,150.00	100%	\$0.00	0%	\$0.00	0%	\$0.00	0%
2000	Structure B-44-0332	\$2,097,638.74	\$2,097,638.74	100%	\$0.00	0%	\$0.00	0%	\$0.00	0%
2010	Structure B-44-179 Fencing	\$79,373.00	\$79,373	100%	\$0.00	0%	\$0.00	0%	\$0.00	0%
4000	Structure R-44-0057	\$793,755.88	\$793,755.88	100%	\$0.00	0%	\$0.00	0%	\$0.00	0%
Construction Subtotal		\$5,161,727.06	\$5,103,384.55		\$22,021.94		\$30,288.96		\$6,031.61	
Total Est. Cost Distribution		\$5,161,727.06	\$5,103,384.55		\$22,021.94		\$30,288.96		\$6,031.61	

¹Costs shown are estimates only and may be updated as design progresses.

²Estimates include construction engineering.

³Community Sensitive Design (CSD) amenities for Buchanan St are funded with 80% federal funding up to a maximum of \$48,000.

⁴Community Sensitive Design (CSD) amenities for Holland Road are funded with 80% federal funding up to a maximum of \$32,000.

⁵Community Sensitive Design (CSD) amenities for Vandenbroek Road are funded with 80% federal funding up to a maximum of \$35,000.

⁶Community Sensitive Design (CSD) amenities for CTH N Interchange are funded with 80% federal funding up to a maximum of \$22,000.

⁷Community Sensitive Design (CSD) amenities for Rose Hill Road (CTH CC) are funded with 80% federal funding up to a maximum of \$32,000.

⁸Community Sensitive Design (CSD) amenities for CTH J Interchange are funded with 80% federal funding up to a maximum of \$44,000.

³⁻⁸State funding shall not be used for CSD items. Federal and Municipal funding is permitted for CSD items.

³⁻⁸Costs in excess of the federal amenities funding limit shall be the responsibility of the Municipality.

This request shall constitute agreement between the Municipality and the State; is subject to the terms and conditions that follow (pages [3] – [9]); is made by the undersigned under proper authority to make such request for the designated Municipality, upon signature by the State, upon fully executed signature of applicable State Municipal Maintenance Agreement and delivery to the Municipality. The initiation and accomplishment of the improvement will be subject to the applicable federal and state regulations. No term or provision of neither the State/Municipal Financial Agreement nor any of its attachments may be changed, waived or terminated orally but only by an instrument in writing executed by both parties to the State/Municipal Financial Agreement.

Signed for and on behalf of the Village of Little Chute	
Name <small>(print)</small>	Title
Signature	Date
Signed for and on behalf of the City of Kaukauna	
Name <small>(print)</small>	Title
Signature	Date
Signed for and on behalf of the County of Outagamie	
Name <small>(print)</small>	Title
Signature	Date
Signed for and on behalf of the State	
Name <small>(print)</small>	Title
Signature	Date

(please sign in blue ink)

TERMS AND CONDITIONS:

1. The Municipality shall pay to the State all costs incurred by the State in connection with the improvement which exceeds federal/state financing commitments or are ineligible for federal/state financing. Local participation shall be limited to the items and percentages set forth in the Summary of Costs table, which shows Municipal funding participation. In order to guarantee the Municipality’s foregoing agreements to pay the State, the Municipality, through its above duly authorized officers or officials, agrees and authorizes the State to set off and withhold the required reimbursement amount as determined by the State from General Transportation Aids or any moneys otherwise due and payable by the State to the Municipality.
2. Funding of each project phase is subject to inclusion in an approved program and per the State’s Facility Development Manual (FDM) standards. Federal aid and/or state transportation fund financing will be limited to participation in the costs of the following items as specified in the Summary of Costs:

- (a) Design engineering and state review services.
 - (b) Real Estate necessitated for the improvement.
 - (c) Compensable utility adjustment and railroad force work necessitated for the project.
 - (d) The grading, base, pavement, curb and gutter, and structure costs to State standards, excluding the cost of parking areas.
 - (e) Storm sewer mains, culverts, laterals, manholes, inlets, catch basins, and connections for surface water drainage of the improvement; including replacement and/or adjustments of existing storm sewer manhole covers, and inlet grates as needed.
 - (f) Construction engineering incidental to inspection and supervision of actual construction work, except for inspection, staking, and testing of sanitary sewer and water main.
 - (g) Signing and pavement marking necessitated for the safe and efficient flow of traffic, including detour routes.
 - (h) Replacement of existing sidewalks necessitated by construction and construction of new sidewalk at the time of construction. Sidewalk is considered to be new if it's constructed in a location where it has not existed before.
 - (i) Replacement of existing driveways, in kind, necessitated by the project.
 - (j) New installations or alteration resulting from roadway construction of standard State street lighting and traffic signals or devices. Alteration may include salvaging and replacement of existing components.
 - (k) Eligible Community Sensitive Design (CSD) amenities considered to be the preference of the community, not to exceed CSD funding limit for the project.
3. Work necessary to complete the improvement to be financed entirely by the Municipality or other utility or facility owner includes the following items:
- (a) New installations of or alteration of sanitary sewers and connections, water, gas, electric, telephone, telegraph, fire or police alarm facilities, parking meters, and similar utilities.
 - (b) New installation or alteration of signs not necessary for the safe and efficient flow of traffic.
 - (c) Roadway and bridge width in excess of standards.
 - (d) Construction inspection, staking, and material testing and acceptance for construction of sanitary sewer and water main.
 - (e) Provide complete plans, specifications, and estimates for sanitary sewer and water main work. The Municipality assumes full responsibility for the design, installation, inspection, testing, and operation of the sanitary sewer and water system. This relieves the State and all of its employees from the liability for all suits, actions, or claims resulting from the sanitary sewer and water system construction.
 - (f) Parking lane costs.
 - (g) Coordinate, clean up, and fund any hazardous materials encountered for city utility construction. All hazardous material cleanup work shall be performed in accordance to state and federal regulations.
 - (h) 20% of costs of eligible Community Sensitive Design (CSD) amenities considered to be the preference of the community up to the CSD funding limit for the project, plus 100% of costs of eligible CSD amenities in excess of the CSD funding limit for the project.
4. As the work progresses, the Municipality will be billed for work completed which is not chargeable to federal/state funds. Upon completion of the project, a final audit will be made to determine the final division of costs.

- 5. If the Municipality should withdraw the project, it shall reimburse the State for any costs incurred by the State on behalf of the project.
- 6. The work will be administered by the State and may include items not eligible for federal/state participation.
- 7. The Municipality shall, in cooperation with the State, assist with public relations for the project and announcements to the press and such outlets as would generally alert the affected property owners and the community of the nature, extent, and timing of the project and arrangements for handling traffic within and around the project.
- 8. Basis for local participation:

Design Engineering, Real Estate Acquisition, Utility Coordination:

The State will pay 100% of the cost for design engineering, real estate acquisition, and utility coordination.

Costs for design engineering, real estate acquisition, and utility coordination are shown as not applicable (N/A) in the summary of costs table due to the complexities of isolating individual Let Project costs from the Appleton-Green Bay corridor wide design ID (1130-63-01) and this information is not relevant to the municipal construction cost share.

Construction ID: 1130-66-82

The Project Agreement will be revised, if necessary, as the project progresses. All costs shown are approximate and subject to final audit.

Category 1000 – Roadway

The State will pay 100% of the construction costs under Category 1000 – Roadway unless otherwise noted.

Category 1100 – Lighting

In accordance with Local Participation policy section 3-25-5 of the State’s Program Management Manual, the State will participate in the costs of new continuous street lighting if it is installed at the time of project construction. Where an alternate design acceptable to WisDOT is installed, up to 50 percent of the cost equivalent to lighting meeting WisDOT standards is eligible, not to exceed 50 percent of actual costs.

The participating total is based on 50% of the total estimated street lighting costs which includes \$30,762.50 for WisDOT installed lighting component costs and \$43,322.80 for above-ground components (including poles and luminaires) to be completed by Village of Little Chute and that will meet WisDOT standards. Because locally funded lighting costs exceed the estimate for WisDOT installed work, no local participation is proposed for this category.

$50\% \times (\$30,762.50 + \$43,322.80) = \$37,042.65$

\$37,042.65 > \$30,762.50 so no local participation is required to make up the 50% overall lighting cost difference.

Category 1400 – Buchanan St. CSD Items

CSD amenities are funded with 80% federal funding up to a maximum of \$48,000 when the Municipality agrees to provide the remaining 20% and any funds in excess of the CSD category funding limit. The Village of Little Chute and Outagamie County will split the local cost share at 10% each up to the CSD amenities category limit and split any costs in excess of the CSD category limit at 50% each.

Buchanan St. CSD items requested by the municipality and included in this project:

- Staining Structure (B-44-0332) - \$22,672.25
- Staining Structure (R-44-0057) - \$14,254.25
- Decorative silhouettes (B-44-0332) - \$11,500

CSD item costs are estimated to be \$48,426.50.

CSD funding is governed by Wis. Stat. 85.0205. The department will regularly review the total CSD funding on this and any associated improvement projects to ensure total CSD funding does not exceed statutory limits. If at any point CSD funding exceeds statutory limits, the department will notify the Municipality of any adjustments to CSD funding that may be required to remain in compliance with state statutes.

Category 1410 – Holland Road CSD Items

CSD amenities are funded with 80% federal funding up to a maximum of \$32,000 when the Municipality agrees to provide the remaining 20% and any funds in excess of the CSD category funding limit. The Village of Little Chute and Outagamie County will split the local cost share at 10% each up to the CSD amenities category limit and split any costs in excess of the CSD category limit at 50% each.

Holland Road CSD items requested by the municipality and included in this project:

- Staining Structure (B-44-0330) - \$21,128.38
- Decorative silhouettes (B-44-0330) - \$11,500

Holland Road CSD items costs are estimated to be \$32,628.38.

CSD funding is governed by Wis. Stat. 85.0205. The department will regularly review the total CSD funding on this and any associated improvement projects to ensure total CSD funding does not exceed statutory limits. If at any point CSD funding exceeds statutory limits, the department will notify the Municipality of any adjustments to CSD funding that may be required to remain in compliance with state statutes.

Category 1420 – Vandebroek Road CSD Items

CSD amenities are funded with 80% federal funding up to a maximum of \$35,000 when the Municipality agrees to provide the remaining 20% and any funds in excess of the CSD category funding limit. The Village of Little Chute and Outagamie County will split the local cost share at 10% each up to the CSD amenities category limit and split any costs in excess of the CSD category limit at 50% each.

Vandebroek Road CSD items requested by the municipality and included in this project:

- Staining Structure (B-44-0331) - \$23,437.00
- Decorative silhouettes (B-44-0331) - \$11,500.00

Vandebroek Road CSD items costs are estimated to be \$34,937.00.

CSD funding is governed by Wis. Stat. 85.0205. The department will regularly review the total CSD funding on this and any associated improvement projects to ensure total CSD funding does not exceed statutory limits. If at any point CSD funding exceeds statutory limits, the department will notify the Municipality of any adjustments to CSD funding that may be required to remain in compliance with state statutes.

Category 1430 – CTH N Interchange CSD Items

CSD amenities are funded with 80% federal funding up to a maximum of \$22,000 when the Municipality agrees to provide the remaining 20% and any funds in excess of the CSD category funding limit. The Village of Little Chute and Outagamie County will split the local cost share at 10% each up to the CSD amenities category limit and split any costs in excess of the CSD category limit at 50% each.

CTH N Interchange CSD items requested by the municipality and included in this project:

- Staining Structure (B-44-0179) - \$22,672.25

CTH N Interchange CSD items costs are estimated to be \$22,672.25.

CSD funding is governed by Wis. Stat. 85.0205. The department will regularly review the total CSD funding on this and any associated improvement projects to ensure total CSD funding does not exceed statutory limits. If at any point CSD funding exceeds statutory limits, the department will notify the Municipality of any adjustments to CSD funding that may be required to remain in compliance with state statutes.

Category 1440 – Rose Hill Road (CTH CC) CSD Items

CSD amenities are funded with 80% federal funding up to a maximum of \$32,000 when the Municipality agrees to provide the remaining 20% and any funds in excess of the CSD category funding limit. Outagamie County, the city of Kaukauna, and the village of Little Chute will split the local cost share. Outagamie County will pay 10% and the city of Kaukauna and the village of Little Chute will pay 5% each up to the CSD amenities category limit. They will split any costs in excess of the CSD category limit with Outagamie County paying 50%, and the city of Kaukauna and village of Little Chute each paying 25%.

Rose Hill Road (CTH CC) CSD items requested by the municipality and included in this project:

- Staining Structure (B-44-0333) - \$21,036.38
- Decorative silhouettes (B-44-0333) - \$11,500

Rose Hill Road (CTH CC) CSD items costs are estimated to be \$32,536.38.

CSD funding is governed by Wis. Stat. 85.0205. The department will regularly review the total CSD funding on this and any associated improvement projects to ensure total CSD funding does not exceed statutory limits. If at any point CSD funding exceeds statutory limits, the department will notify the Municipality of any adjustments to CSD funding that may be required to remain in compliance with state statutes.

Category 1450 – CTH J Interchange CSD Items

CSD amenities are funded with 80% federal funding up to a maximum of \$44,000 when the Municipality agrees to provide the remaining 20% and any funds in excess of the CSD category funding limit. The city of Kaukauna and Outagamie County will split the local cost share at 10% each up to the CSD amenities category limit and split any costs in excess of the CSD category limit at 50% each.

CTH J Interchange CSD items requested by the municipality and included in this project:

- Staining Structure (B-44-0338) - \$23,434.13
- Staining Structure (R-44-0050) - \$3,944.50
- Staining Structure (R-44-0051) - \$5,169.25
- Decorative silhouettes (B-44-0338) - \$11,500

CTH J Interchange CSD items costs are estimated to be \$44,047.88.

CSD funding is governed by Wis. Stat. 85.0205. The department will regularly review the total CSD funding on this and any associated improvement projects to ensure total CSD funding does not exceed statutory limits. If at any point CSD funding exceeds statutory limits, the department will notify the Municipality of any adjustments to CSD funding that may be required to remain in compliance with state statutes.

Category 1600 – Local/Non-Participating, Village of Little Chute

In accordance with Local Participation Policy Section 3-25-5 of the State’s Program Management Manual proposed improvements requested by the Municipality within the project limits, but outside the original project scope, are considered 100% the responsibility of the Municipality.

Item Number	Item Description	Units	Estimated Qty	Unit Price	Amount
305.0120	Base Aggregate Dense 1 ¼-Inch	TON	1	\$23	\$23

1130-66-82 Construction Total \$23
 15% Construction Engineering \$3.45
 1130-66-82 Project Total \$26.45

Category 1610 – Sidewalk, Village of Little Chute

In accordance with Local Participation Policy Section 3-25-5 of the State’s Program Management Manual, the State will participate in the construction costs of new sidewalks if they are installed at the time of project construction. Costs of sidewalk constructed to WisDOT standards and installed at the time of the project construction are 80% eligible for WisDOT participation.

Item Number	Item Description	Units	Estimated Qty	Unit Price	Amount
305.0120	Base Aggregate Dense 1 ¼ Inch	Ton	180	\$23	\$4,140.00
602.0405	Concrete Sidewalk 4-Inch	SF	7988	\$7.25	\$57,913.00

1130-66-82 Sidewalk Total \$62,053.00
 15% Construction Contingency \$9,307.95
 1130-66-82 Project Total \$71,360.95

Category 1800 – 100% State Funded

The State will pay 100% of the construction costs under Category 1800 – 100% State Funded unless otherwise noted.

Category 2000 – Structure B-44-0332

The State will pay 100% of the construction costs under Category 2000 – Structure B-44-0332 unless otherwise noted.

Category 2010 – Structure B-44-179 Fencing

The State will pay 100% of the construction costs under Category 2010 – Structure B-44-179 Fencing unless otherwise noted.

Category 4000 – Structure R-44-0057

The State will pay 100% of the construction costs under Category 4000 – Structure R-44-0057 unless otherwise noted.

Comments and Clarification: This agreement is an active agreement that may need to be amended as the project is designed. It is understood that these amendments may be needed as some issues have not been fully evaluated or resolved. The purpose of this agreement is to specify the local and state involvement in funding the project. A signed agreement is required before the State will prepare or participate in the preparation of detailed designs, acquire right-of-way, or participate in construction of a project that merits local involvement.



SB- River



NB - Fox

Aesthetics: Structures

I-41 Overpass Bridge



Retaining Wall



*Final design is subject to change

