



PARKS & RECREATION ADVISORY COMMITTEE AGENDA

March 05, 2024 at 5:30 PM

Assembly Chambers/Zoom Webinar

<https://juneau.zoom.us/j/94184441385> or +1 669 444 9171 US Webinar ID: 941 8444 1385

A. CALL TO ORDER

B. ROLL CALL

C. DIRECTOR'S REPORT

1. March 5th Director's Report

D. APPROVAL OF AGENDA

E. APPROVAL OF MINUTES

2. Minutes from February 6, 2024

F. PUBLIC PARTICIPATION ON NON-AGENDA ITEMS

G. NEW BUSINESS

3. Court Reconfiguration at Adair-Kennedy Memorial Park

4. RED FOLDER - Public Comment on Court Reconfiguration at Adair-Kennedy Memorial Park

H. UNFINISHED BUSINESS

I. STAFF REPORTS

5. Christopher Trail Reroute Project Update

6. Division Update

J. COMMITTEE MEMBER / LIAISON COMMENTS AND QUESTIONS

K. NEXT MEETING DATE

L. ADJOURNMENT

ADA accommodations available upon request: Please contact the Clerk's office 36 hours prior to any meeting so arrangements can be made for closed captioning or sign language interpreter services depending on the meeting format. The Clerk's office telephone number is 586-5278, TDD 586-5351, e-mail: city.clerk@juneau.gov.



TO: Parks & Recreation Advisory Committee
FROM: George Schaaf, Parks & Recreation Director
DATE: February 28, 2024
RE: March 5, 2024 Meeting

DIRECTOR'S REPORT

Please find enclosed the information supporting your agenda topics for this meeting. The meeting is anticipated to last 60 minutes and will take place in person at City Hall and virtually via **Zoom Webinar**. To join the Zoom Webinar, go to <https://juneau.zoom.us/j/94184441385> or call 1-253-205-0468. **Webinar ID:** 87003674124.

G. NEW BUSINESS

1. Court Reconfiguration at Adair-Kennedy Memorial Park

Adair-Kennedy Memorial Park currently has two tennis courts and two basketball courts. The surfaces of both courts need to be refurbished and the fence around the existing tennis courts must be replaced. With the explosion in popularity of pickleball in Juneau, there is tremendous demand for dedicated pickleball courts in the community. The Department currently provides one court at Cope Park that is striped for both tennis and pickleball, which is in near constant use during the summer. Similarly, the tennis courts at Adair-Kennedy Memorial Park are primarily used by groups of pickleball players. To better accommodate growing demand for pickleball, staff propose reconfiguring the existing courts to provide 4-6 pickleball courts, one basketball court, and one tennis court.

While this will result in the loss of one basketball court, there are three covered basketball courts located nearby at Kaxdigoowu Héen Elementary School, Glacier Valley Elementary School, and Mendenhall River School. Given current levels of use and the proximity of indoor tennis courts at The Alaska Club nearby, staff believe that one tennis court at this location is adequate to meet existing demand.

Recommended Motion:

I move that the Parks & Recreation Advisory Committee recommend that the Department reconfigure courts at Adair-Kennedy Memorial Park to provide 4-6 pickleball courts, one tennis court, and one basketball court.

I. STAFF REPORTS

1. Christopher Trail Reroute Project Update

At its February 5, 2024 meeting, the PRAC requested an update regarding the Christopher Trail Reroute project.

This project was previously discussed in detail by the PRAC at its regular meeting on September 6, 2022. Deputy Director Michele Elfers and Trail Mix Executive Director Ryan O'Shaughnessy presented information regarding the project's goals and a map showing the proposed route. This information is included again in the packet for tonight's meeting, as well as the minutes of the September 6, 2022 meeting.

No members of the public provided comments on the project at that meeting. Following a discussion of the project by Committee members, the PRAC unanimously recommended that the Parks & Recreation Department proceed with the project and pursue any required leases with AEL&P, AJT, and the Alaska Dept. of Natural Resources. The project was subsequently reviewed by the PRAC as part of the Department's Capital Improvement Plan on November 1, 2022 and December 6, 2022. The Assembly Public Works & Facilities Committee received information on the project during a presentation by staff on December 19, 2022. The project was included in the Department's FY23 Capital Improvement Plan and approved by the Assembly during the FY23 budget process.

As was presented to the PRAC in 2022, the purpose of this project is to reduce conflicts between bicyclists and pedestrians on the Flume, which is owned by AEL&P. A 1989 agreement between AEL&P and CBJ limits access to foot traffic only because the structure is too narrow for two-way traffic that includes bicycles or other wheeled transportation. The Christopher Trail Reroute provides bicyclists with an alternative to the Flume, where they are not allowed. The project includes improving an abandoned roadbed above the Flume and constructing a new trail to a future bridge across Gold Creek in Cope Park. While these improvements are accessible by pedestrians, they are designed primarily for use by bicycles. An existing social trail leading to the Flume from the old water main east of Cope Park remains available.

2. Division Updates

Aquatics

The ribbon cutting for Augustus Brown Pool was held on Friday, March 1st, with limited hours available the week of March 4th. A grand reopening will take place on March 9th, including a free community swim. Thanks to the efforts of staff from Parks & Recreation, Engineering & Public Works, and general contractor Dawson Construction, we accomplished more work than originally planned while also keeping the project under budget. In addition to replacing nearly all of the building's mechanical systems, significant renovations and improvements were made to the locker rooms and lobby areas. A former staff office has also been converted to a small event room that will be available for birthday parties and other rentals. Other improvements include LED lighting inside the natatorium, resurfacing of the leisure pool, new signage, a refurbished sauna, and security cameras.

Our Facilities Maintenance Division is working to replace a main pump at the Dimond Park Aquatic Center. Unfortunately, the new pump arrived in Juneau with significant issues, resulting in a two-day closure of the leisure pool. The leisure pool will be closed again briefly in coming weeks to complete the final repairs.

The Aquatics Division hosted a job expo at Augustus Brown in mid-February to recruit lifeguards and other staff to operate the downtown pool once the renovation is complete. Seven new lifeguards recently completed their training, and we received another 10 applications for Aquatic Attendants.



Our latest Dive-in Movie was a hit! Over 100 people enjoyed **Jaws** thanks to our sponsor, Allen Marine Tours. For our next movie, we're taking the big screen to Treadwell Arena!



Treadwell Arena

Our Facilities Maintenance Division installed new digital controls for the ice plant at Treadwell Arena in February, following an unscheduled closure due to a failure of the old system. The new controls are standardized with other CBJ facilities, allowing remote operation and adjustment of key building systems. Thanks to the efforts of the staff at Treadwell Arena and Facilities Maintenance, we were never in danger of losing the ice during this incident; however, a number of private rentals were canceled as a result.

Speed skating lessons are being offered every other Sunday at 2:45 p.m., with the next session on March 17th. Each one-hour session costs \$15+tax and speed skates are included.



We are planning to offer a range of activities this summer while the ice is out at Treadwell Arena, including pickleball, floorball, and roller skating beginning the week of May 20th – stay tuned!

Youth Services

Registration for Start Smart Baseball & Softball (ages 3-4) opened Friday, March 1 at 12 p.m. We are offering 25 spots at a cost of \$40 each (scholarships are available).

Zach Gordon Youth Center's Spring Break Camp offers a week of adventure at Juneau Pools, Treadwell Arena, Dimond Park Field House, and more! As of February 28th, we still had 2 spots available. The camp takes place March 18-22 from 9 a.m. to 3 p.m., offering kids safe activities while school is out and parents are working.

Dimond Park Field House

Family Fun Nights hosted by AEYC-SEA continue to be a hit at the Field House, drawing hundreds of kids and their grownups.



Parks & Landscape

With summer dates opening up 90 days in advance, demand for the Amalga Cabin has increased. The cabin has been booked nearly every day since it opened, reflecting not only its popularity, but also its low rental price. While we may never meet demand for cabins like this, we are committed to building more and keeping prices affordable for everyone in our community. This summer we expect to finalize the location of a second public use cabin, with construction planned for 2025.

We are aware that some folks have been unable to book the Amalga Cabin and have shared some tips with the public, including:

- Reservations open 90 days out and the next available date is released every evening at 6 p.m.
- The reservation site works best on a computer, where you can view all available dates (it's not unusual to see no availability because the cabin is almost always 100% booked).

- To improve your chances, log in a few minutes before 6 p.m. and then refresh your browser at the top of the hour.

It's also worth busting a few myths:

- The lack of availability is not because people are securing multiple reservations. There is a three-rental limit per person, per year. This is enforced by the reservation system and monitored by our staff.
- We have confirmed with our reservation system provider, CivicRec, that reservations are not being scooped up by "bots." Reservations also are not being scalped online. Many of our staff are members of various local groups on social media (i.e. Juneau Cabin Swap on Facebook) and would catch this behavior.
- There is not a problem with the availability calendar online. If no nights are available, it's because they are booked. Summer bookings are much more popular than winter, typically going a minute or two after 6 p.m. In winter, however, reservations might be available for hours or even days. In the last 12 months, there were only 4 nights where the cabin wasn't rented.
- We believe offering a new reservation each night at 6 p.m. gives everyone the best chance of success. Offering a bucket of reservations (i.e. 6 months of availability) all at once would mean some folks might have to wait half a year to try again. It also could encourage no-shows or forgotten reservations that other people could use.
- Finally (and I can't believe I have to say this), P&R staff are not accessing the system to book reservations for themselves before the public has a chance. We use the same system and play by the same rules as everyone else, which is why I've only been able to book the Amalga Cabin once since it was built!



PARKS & RECREATION ADVISORY COMMITTEE **DRAFT** MINUTES

February 06, 2024 at 5:30 PM

Assembly Chambers/Zoom Webinar



<https://juneau.zoom.us/j/94184441385> or +1 669 444 9171 US Webinar ID: 941 8444 1385

A. CALL TO ORDER

PRAC Chair Chris Mertl called the meeting to order at 5:58 PM

B. ROLL CALL

Present: Chris Mertl, Makayla Pfaff, Josh Anderson, Paulette Schirmer, Charles Westmoreland, Christina Mounce, Portland Highbaugh

Absent: Emma Van Nes, Danika Swanson

Staff Present: George Schaaf, Parks and Recreation Director; Lauren Verrelli, Parks and Recreation Deputy Director; Lauren Anderson, Treadwell Arena Manager; Michelle Hale, Assembly Liaison; Annie Carroll, Parks and Recreation Staff Liaison

C. DIRECTOR'S REPORT

1. February 6th Director's Report

D. APPROVAL OF AGENDA

Mr. Mertl suggested that the agenda be rearranged to cover Staff Reports after Public Participation on No-Agenda Items. Mr. Anderson motioned to approve the agenda as amended. No objections were heard, and the agenda was approved.

E. APPROVAL OF MINUTES

2. Minutes from December 5, 2023

Ms. Schirmer motioned to approve the minutes for the December 5th, 2023 PRAC meeting. No objections were heard, and the minutes were approved.

F. PUBLIC PARTICIPATION ON NON-AGENDA ITEMS

Rob Roy, a resident of downtown Juneau offered comment on the Christopher Trail. Mr. Roy expressed concern that there have been alterations made to the trail last summer to change it from a pedestrian trail into primarily a mountain bike trail. He shared that he, and the trail users he's spoken to, are upset about this change.

Mr. Mertl asked Mr. Schaaf if he had any knowledge of these changes. Mr. Schaaf stated that he would be happy to prepare a report for the next meeting with information on the trail.

G. NEW BUSINESS

3. Abandoned Vehicles Policy – Presented by G. Schaaf

Mr. Schaaf began by explaining that there has been an increase in abandoned vehicles in Parks & Rec lots and garages in recent years. To solve this problem Parks & Rec has worked with the Law Department, to change city code to extend Parks & Rec the authority to impound vehicles in place. It is his hope that this policy will give the department better tools to manage abandoned vehicles as citations have not acted as a sufficient deterrent in these cases.

Mr. Westmoreland said that a month seems incredibly generous for a car to be considered abandoned and asked how often vehicles that have been left for 3 to 4 weeks are retrieved by their owner. Mr. Schaaf answered that while vehicles abandoned for weeks are rarely retrieved, these time periods were selected because they are what is required by state law which supersedes city code.

Ms. Schirmer asked if this policy proposes that auctions take place throughout the Juneau area based on where the vehicle is located. Mr. Schaaf answered that that is not the case; the department would use the same online auction service the CBJ uses for police impounded vehicles and surplus equipment.

Mr. Anderson motioned for the Parks & Recreation Advisory Committee to recommend that the Director adopt Policy No. 100-006. No objections were heard, and the motion passed.

4. Glacier Valley Rotary Club Riverside Rotary Park Weed Removal – Presented by G. Schaaf

Mr. Schaaf explained to the PRAC that there has been an excessive amount of aquatic weed growth in the pond at Riverside Rotary Park and that the options for limiting the weeds growth have been limited. The department was approached by Charlie Williams from the Glacier Valley Rotary (GVR) with an innovative solution, and he is present tonight to share more information.

Mr. Williams shared with the PRAC that GVR wants to purchase a machine called The WaterShark that will cut the milfoil weed in the pond so that it can be harvested from the shore and disposed of either through Juneau Composts or the community gardens. He said removing the milfoil will be beneficial to the ducks, allow for more ice skating in the winter, and prevent people from becoming entangled should they fall into water. Mr. Williams asks that the Parks & Rec department provide storage for the machine at their Riverside facility. GVR intends to fundraise for the purchase of this machine which they will maintain and operate themselves, therefore not impacting the department's staff time.

Ms. Mounce expressed her support of the idea; however, she noted that Invasive weeds should not be disposed of through compost, and the milfoil appears to be aggressively spreading. Mr. Mertl asked if there was any collaboration with Audubon or Fish and Game to develop a strategy for protecting the natural habitat by potentially only removing a portion of the milfoil. Mr. Schaaf shared that the department will not move forward until they have consulted with Fish and Game.

Ms. Highbaugh noted that the GVR letter of intent mentioned that the WaterShark could be a shared investment opportunity which could be used at twin lakes. She then asked if GVR will need funding from Parks and Rec in the future for this machine. Mr. Williams answered that GVR doesn't Invision needing funding at this time.

Ms. Pfaff motioned for the Parks and Recreation advisory Committee to recommend that the Director accept the donation of an aquatic weed harvester from the Glacier Valley Rotary Club, and work with the club to clear aquatic weeds from the Riverside Rotary Park pond. No objections were heard, and the Motion passed.

H. UNFINISHED BUSINESS - None

I. STAFF REPORTS

5. Treadwell Arena Update – Presented by L. Anderson

Treadwell Arena Manager Lauren Anderson Presented the PRAC with updates about the division's programs and operations. Ms. Anderson's presentation provided information about the arena, its purpose, and core user groups as well as about recent and upcoming improvements to the facility.

Mr. Westmoreland asked about why The Juneau skating club has been using the facility less since 2019. Ms. Anderson shared that the organization has faced challenges with their group lesson program, but that numbers are on the rise. Mr. Westmoreland asked what plans there are to acquire more full-time

staff members, and if more funding will be necessary. Ms. Anderson shared that the arena is requesting a slight increase in funding, however the division is currently restructuring to make more full-time positions which will help with cost savings.

Mr. Mertl asked about when or if a second sheet of ice will be added to the arena. Ms. Anderson answered that a second sheet of ice has been added to the CIP list and will be pursued after a study is executed. She noted that other facility improvements such as space for dry land training, meeting rooms, and increased on-site equipment storage are currently a higher priority.

Mr. Westmoreland asked about Treadwell's current revenue vs annual expenses and how a second sheet of ice may impact that. Ms. Anderson answered that Treadwell's operating revenue for 2023 was just over \$460,000, and operating expenditures were \$884,000 including personnel and building maintenance. She added that financially it would be best to have the second sheet as close to the existing facility as possible so that the ice resurfacing and staff resources can be shared.

Mr. Anderson asked about the prospect of hosting events with concessions and beer gardens at the arena. Ms. Anderson answered that they found it difficult to find businesses with the resources to bring additional staff offsite for such events, and that the prospect was not as popular as they initially hoped.

6. 2024 Project Update – Presented by G. Schaaf

Mr. Schaaf updated the PRAC on the capital improvement construction projects. He shared that Improvements to Savikko Park and Capital Park are going to be completed this year in the spring and summer. Projects planned to start construction in the summer of 2024 include playground replacements at Sigoowu Ye Park, Si't Tuwan Park, and Eagles Edge Playground. Improvements to the pathway and lighting at Riverside Rotary Park, and the creation of a parking lot for the 35 Mile ORV Park are both scheduled to begin in 2024. He also shared about ongoing projects at Adair Kennedy Park, The Hank Harmon Public Range, and Kaxdigoowu Heen Dei Trail that will be advanced this year.

Mr. Anderson asked if there have been any plans for extending the length of the range out to 1000 Yards at The Hank Harmon Public Range. Mr. Schaaf answered that there was discussion about extending the range, however that would substantially increase costs beyond the budget, cause delay and require a greater level of environmental review.

Mr. Mertl asked about the Dupont Trail bridge replacement. Mr. Schaaf confirmed that an engineer from the State of Alaska Department of Transportation (DOT) confirmed by their assessment the bridge is going to fail imminently and that they are open to working with CBJ and The Forest Service to get it replaced. Parks & Rec has been working with Trail Mix to apply for a Federal Lands Access Program (FLAP) grant for these improvements. There has been a delay to this project as DOT has refused to grant permission to reconstruct the bridge because part of the Dupont Trail is in an area where DOT has plans to build a road to Atlin, British Columbia.

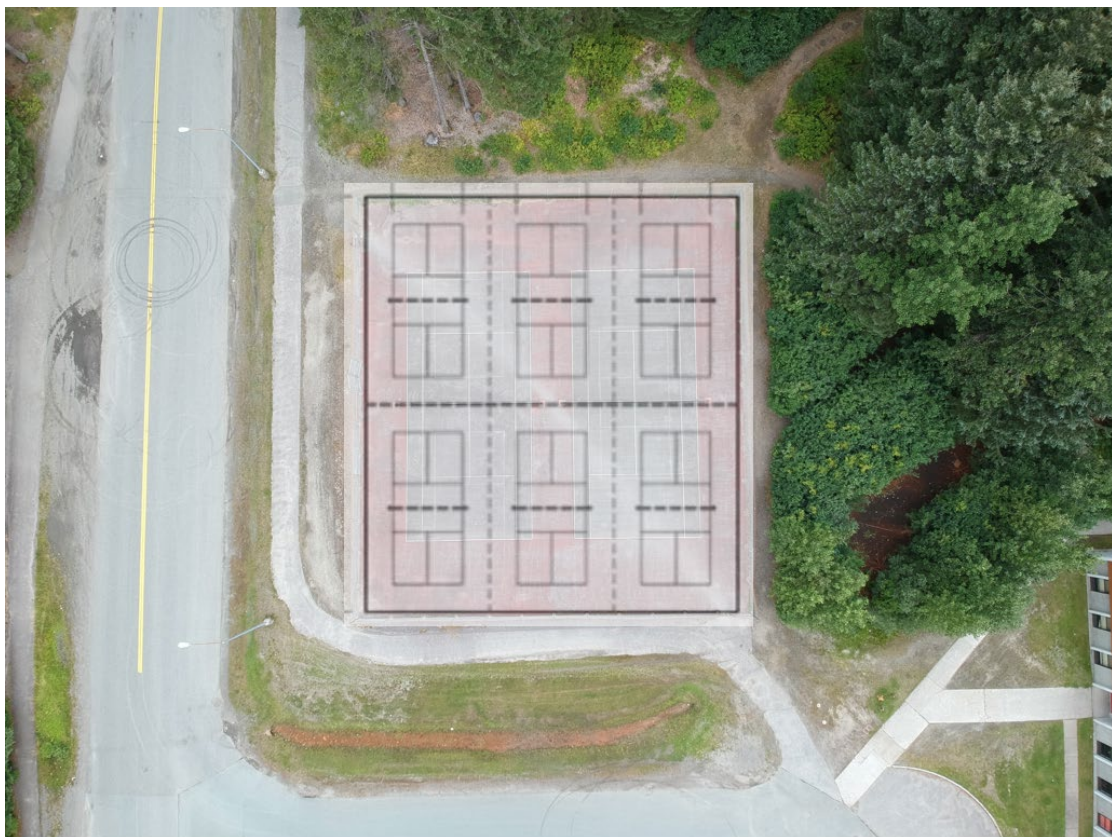
J. COMMITTEE MEMBER / LIAISON COMMENTS AND QUESTIONS

Mr. Mertl shared that the Lands, Housing, and Economic Development Committee met to discuss housing, Telephone hill, updates on tourism, and the results from the visitor survey which provides insight on how people are experiencing our community.

K. NEXT MEETING DATE – March 5, 2024

L. ADJOURNMENT – Ms. Schirmer motioned to adjourn. No objections were heard, and the meeting was adjourned at 7:09pm

Respectfully submitted by Annie Carroll, Administrative Assistant 2/27/2024



From: [Beatrice Franklin](#)
To: [Parks Rec](#)
Subject: Elimination of a tennis court at FD
Date: Monday, March 4, 2024 1:52:32 PM

Sent from my iPhone

Am unable to attend your March 5th meeting but would like to express dissatisfaction with your current proposal regarding upgrading courts at Floyd Dryden

They do seem long overdue for resurfacing. I am a tennis player who doesn't want to see one less court in our community. Yes there are two nearby indoor courts at a private facility whose membership fees are not affordable by all. Those who can afford them still enjoy playing outdoors on nice Spring/Summer days.

Tennis players have in recent years stayed away from the FD courts because of uneven surfaces and also because pickleball users have not (I hear) adhered to time limits on the court. Yes pickleball is popular and yes in an ideal world there should be dedicated courts.

Pickleball players have more places to play in Juneau. Our tennis community which is growing, including the infusion of youth through lessons and the high school team, have currently only 6 courts city-wide.

Please please do not make it more difficult to participate in a sport we love.

I do applaud you for taking care of many of the recreational needs of our community.

Beatrice Franklin
907-209-6199
19009 Glacier Hwy
Juneau, Ak. 99801

From: [Lauren Smoker](#)
To: [Parks Rec](#)
Cc: [Mona Mametsuka](#); [Austin Stefanich](#)
Subject: Please keep both tennis courts at Adair-Kennedy Memorial Park
Date: Monday, March 4, 2024 1:57:27 PM

Dear committee members:

I've recently learned (within the last day) that the Parks and Rec Advisory committee is voting tomorrow (March 5) to reconfigure Adair-Kennedy Memorial Park to provide 4-6 pickleball courts, one basketball court, and one tennis court.

I respectfully request that the Committee please maintain two tennis courts at Floyd Dryden. The Committee can accommodate the pickleball community at Floyd Dryden without a 50% reduction in tennis opportunities for valley residents, and the Juneau Community at large.

First, as is occurring now, pickleball can be played on a tennis court so maintaining two tennis courts at Floyd Dryden does not remove opportunity and space for pickleball play. However, tennis cannot be played on a regulation-size pickleball court.

Second, the Floyd Dryden courts are used by the tennis community regularly. I have personally played on those courts many times, and particularly when the weather is good. I have to say that the state of the surface of the FD tennis courts is terrible, and some tennis players I know have tripped and fallen as a result of the degraded surface. If the courts have not been used as frequently for tennis, it is likely because the surface is really bad and potentially dangerous to players. So the Committee's intent to resurface the courts is much appreciated.

Third, the FD courts are open and freely available to all in the Juneau community who would like to play tennis. The Committee minutes state that "The Alaska Club is nearby" as a reason to eliminate one tennis court. However, to play tennis at The Alaska Club requires a membership with the Club, and the cost of the membership is not insignificant. Juneau has a strong tennis community and outdoor courts that are free should continue to be made available.

Finally, the pickleball striping on one of the tennis courts at Cope Park makes it almost impossible to play tennis on that court. If the Committee decides to add 4-6 pickleball courts at Floyd Dryden, I request that no pickleball striping be placed on either tennis court. Chalk lines or removeable pickleball lines can easily be put down on the tennis courts and then easily removed.

I will end my comments by saying that both pickleball and tennis can be accommodated at Floyd Dryden without the loss of a tennis court. With only two free tennis courts in the valley, the Parks and Rec department should strive to maintain both tennis courts for all tennis players, both young and old, who live there and play there.

Sincerely,
Lauren Smoker

From: [Kate Hudson](#)
To: [Parks Rec](#)
Subject: Tennis v pickleball
Date: Monday, March 4, 2024 2:21:00 PM

Please do not convert the tennis courts at Floyd Dryden to pickleball.

The only other tennis courts available for valley dwellers are at the Alaska club which means an hugely expensive membership that many cannot afford.

Now that Floyd Dryden is being closed as a school, what about the gym? Why can't that be made available to pickleball players year round?

Tennis players have very few options in Juneau. Please don't remove more.

Thanks

Kate Hudson

From: [Jodi Arnold](#)
To: [Parks Rec](#)
Subject: Tennis courts at Floyd
Date: Monday, March 4, 2024 3:15:33 PM

Good afternoon,

I recently heard that parks and rec are considering taking away one of the tennis courts at Floyd. As a tennis player, I am very concerned about this. That will bring us to only 3 FREE outdoor courts in all of Juneau. This will greatly limit access.

Furthermore, I have heard rumor that the indoor courts at the Alaska Club are being used in whatever equation you use to determine the number of courts needed. They should absolutely not be considered courts for the valley. There is a steep membership fee that is a barrier for most players. Alaska Club Courts are not publicly funded, and therefore cannot be factored into CBJ's assessment.

We have a thriving tennis community in Juneau. This can be seen in the reservation usage at the Alaska Club and the involvement of high school students in the tennis program. Please do not sacrifice one sport to appease another.

Thank you,

Jodi Arnold

From: [RICHARD C. LEE](#)
To: [Parks Rec](#)
Subject: Floyd Dryden tennis courts
Date: Monday, March 4, 2024 3:27:32 PM

To Parks and Rec,

Please do not eliminate a tennis court at FD. During the summer many tourists and/or Pickle players will be using the Cope Park courts and the FD are the only other ones (after closing the sandy beach courts) available to the public. While I appreciate the need for more pickle ball courts, that should not be at the expense of sacrificing the one or 2 tennis courts left for residents, tourists and non pickle ball players.

Richard Lee

From: [Mona Mametsuka](#)
To: [Parks Rec](#)
Subject: Adair-Kennedy Court Feedback
Date: Monday, March 4, 2024 3:55:28 PM

Greetings Parks & Rec Advisory Committee Members,

I just learned about your upcoming agenda to discuss and possibly decide on a reconfiguration to the Adair-Kennedy courts. I appreciate the committee's efforts to improve the courts and meet the varying needs in Juneau.

I am a tennis player who loves the game and has used the Adair-Kennedy tennis courts throughout the years. I am also a supporter of the pickleball community. But I also need to advocate for two tennis courts and ask that the PRAC would not take away from one recreational community for the sake of another.

I would like to create some awareness for the committee members to consider in your decision making process.

- The courts are a public good that serve three different sports (basketball, pickleball and tennis). While basketball and pickleball can be played in smaller spaces, tennis has limited places to play.
- The Alaska Club is a private club and not affordable to all. So public tennis courts are a very important resource for our community.
- Tennis usage is under-represented due to access issues. Pickleball is often played with large groups of people that rotate in which makes it difficult for tennis players to "wait" for a court to open. Tennis players just give up and leave. It is also unreasonable to expect 2-4 tennis players to ask 30+ pickleball players to vacate the court after an hour time limit
- Consider keeping 2 tennis courts, building 4-6 pickleball courts across the way and extend/add a new basketball court to the footprint.

I am not interested in creating conflict (which happens all too often in other communities between tennis and pickleball) but merely to advocate that both sports should be properly considered. I love Juneau. I love tennis. And I love our pickleball and basketball community. And I also really want the reconfiguration to work in such a way that allows tennis resources to remain accessible.

Thank you for your time and consideration.

Respectfully,
Mona Mametsuka

From: [Colleen McKenna](#)
To: [Parks Rec](#)
Subject: Court Reconfiguration Proposal
Date: Monday, March 4, 2024 4:00:13 PM

Members of the PRAC,

It has come to our attention that you are considering eliminating one of the two tennis courts at Floyd Dryden in favor of replacing it with pickleball courts. We strongly encourage you to consider putting all of the pickleball courts into the existing basketball courts and leaving the two tennis courts intact and solely dedicated to tennis. As mentioned in the proposal, there are already multiple basketball courts in the area, and we rarely see the basketball courts at Floyd in use. There is no reason that pickleball needs to be played on a tennis court – they don’t use the nets, they don’t use the lines, and the surface is geared toward fuzzy balls, not plastic ones.

As I’m sure you’ve heard, the Juneau pickleball and tennis communities have had numerous clashes over space, noise, and collegiality, and your proposal is only going to intensify that conflict. Juneau’s outdoor (free) tennis courts have been overrun by pickleball players, and it is often very difficult to get on a tennis court. At this time, there are only three usable outdoor tennis courts in Juneau. This does not include the far tennis court at Cope Park, which is unusable for tennis matches due to the impossibility of making line calls (see attached photo and imagine trying to call whether a ball moving at 70-100mph was in or out).

In addition, while tennis requires concentration, pickleball is extraordinarily loud and disruptive (this is not just our opinion, please see the links below). Not only are the plastic balls and paddles loud, but players also tend to talk loudly between games, to yell frequently, and to walk around and often even into the tennis-playing space. Unfortunately, many of the Juneau pickleball community are unaware of long-standing tennis court etiquette, and are infuriated when tennis players try to politely pass along these guidelines. The last link below (“Pickleball is wreaking havoc...”) describes some of the types of conflicts that exist between tennis and pickleball players.

The documentation about the Floyd Dryden proposal said that “Given current levels of use and the proximity of indoor tennis courts at The Alaska Club nearby, staff believe that one tennis court at this location is adequate to meet existing demand.” To set the record straight, the Alaska Club actually has four pickleball courts and two tennis courts. They use the same space, and certain days are set aside for tennis, while others are set aside for pickleball. Available tennis time has been cut in half, with no reduction in membership fees.

The high school tennis coaches have been doing an amazing job of growing the young tennis community in Juneau. However, once the high school season is over, most of the kids are not able to continue playing due to the high cost of tennis membership at the Alaska Club (we pay \$170 per month). With the recent pickleball takeover of the two tennis courts at Floyd, these kids have very few options for playing outside the very short high school season. The tennis coaches also teach tennis lessons for younger children, and there are dozens of new youngsters in Juneau who play tennis and would likely use those outdoor courts. If you were to convert the basketball space to dedicated pickleball space, and designate that the two tennis courts are solely for tennis, you would provide kids (and adults) an opportunity to play tennis for free for several months of the year.

If you do move forward with your proposal, please do not put four pickleball courts into a single tennis court. In order to do this, you would need to have the pickleball lines well outside the existing tennis court lines (as at Cope Park). While the courts at Cope Park are far enough apart to accommodate that, the ones at Floyd are too close together already. Tennis players play as much from outside the lines as they do from inside the lines. If you put pickleball players, their nets, and rolling balls (AKA ankle-killers) in such close proximity to the playable space around a tennis court, there are sure to be a large number of injuries. We encourage you to consult with tennis experts who will help you to understand the risk and liability of this decision.

Also, if you eliminate one tennis court, please post clear signage stating that the remaining tennis court is dedicated to tennis. Tennis players can’t play tennis on a pickleball court, but we’ve seen

pickleball players alter tennis nets to turn a tennis court into a pickleball court (often with the net unusable for tennis afterward). They also often put down tape that causes slips and trips (as the tape starts coming up).

In conclusion, both tennis and pickleball are lifelong sports that promote health and well-being. More opportunities (for both) are best for the community. Rather than minimizing opportunities for tennis players, we encourage you to create separate, dedicated spaces for each. There should be equitable opportunities to participate in both pickleball and tennis. Right now, improving pickleball access at the cost of tennis access is inequitable and unnecessary.

Please feel free to reach out if you have any questions.

Thanks,

Colleen and Dave McKenna

907-957-0008

Links:

Shattered nerves, sleepless nights: Pickleball noise is driving everyone nuts:

<https://www.nytimes.com/2023/06/30/sports/pickleball-noise-complaints-lawsuits.html>

'What's All The Racket?' Neighbors and Pickleball Players Face Off Over Noise:

<https://www.1kldnow.com/whats-all-the-racket-neighbors-and-pickleball-players-face-off-over-noise/>

Noise. Lights. Crowds. Pickleball problems plague neighbors: <https://ksltv.com/565667/noise-lights-crowds-pickleball-problems-plague-neighbors/>

Pickleball is wreaking havoc across the US — and it's only going to get worse:

<https://nypost.com/2023/10/02/pickleball-is-wreaking-havoc-across-the-us/>



From: [Abby O'Brien](#)
To: [Parks Rec](#)
Subject: Parks and Rec Meeting for 3.5.24 - Public Comment re: Adair Kennedy Courts
Date: Monday, March 4, 2024 4:11:03 PM

Good afternoon,

I am writing out of concern for CBJ's plan to remove one of the tennis courts at Adair Kennedy/Floyd Dryden with the new resurfacing. This is a one-sided proposal benefiting a singular group in Juneau, and proper consideration was not given to other members of the community who utilize the space.

With CBJ's proposal, one major worry is "Staff believe that one tennis court at this location is adequate" and that tennis players are supposed to utilize the indoor courts at the Alaska Club. What staff member made this determination? Do they play tennis and see the need for court space that the sport requires? Were members of the tennis community contacted by this staff member to discuss the proposal? The Alaska Club is a private business, and not accessible to everyone in the community. The courts at Adair Kennedy are free to the public through use of their tax dollars. How is saying "go pay for it on your own" an effective solution? Will CBJ be subsidizing memberships to the Alaska Club now for tennis players who have been disenfranchised by this proposal?

I am concerned that CBJ is also being misled when it comes to the definition of "court usage". When the weather allows, the pickleball community will consistently set up BBQs, tents, lawn chairs, tables, etc., and spend the entirety of the day on the courts. The CBJ court usage time limits are ignored, and any other community members wishing to do so cannot access the facility. To say that the tennis community isn't utilizing the courts when they are actively being prevented from doing so is a falsehood. (This situation is not exclusive to Adair Kennedy, as the same thing happens at Cope Park)

While the pickleball has been advocating for playing space, they are doing so by transplantation and usurpation of areas utilized by other groups in town. For example, last August, they advocated for courts at Jackie Renninger Park, which would potentially affect the local skating community. (Attachment 1) Now, the tennis community's access to facilities is again in the crosshairs with the Adair Kennedy resurfacing proposal.

Part of the lure of pickleball is its portability. It can be played in school and church gyms. The JACC and UAS already have court space allotted for pickleball. Tennis is not afforded the same luxury. A larger court space is needed to play the sport, and this proposal would eliminate 25% of the available public playing space in Juneau.

Over the past few years, Juneau Tennis has maintained its attendance and grown the sport

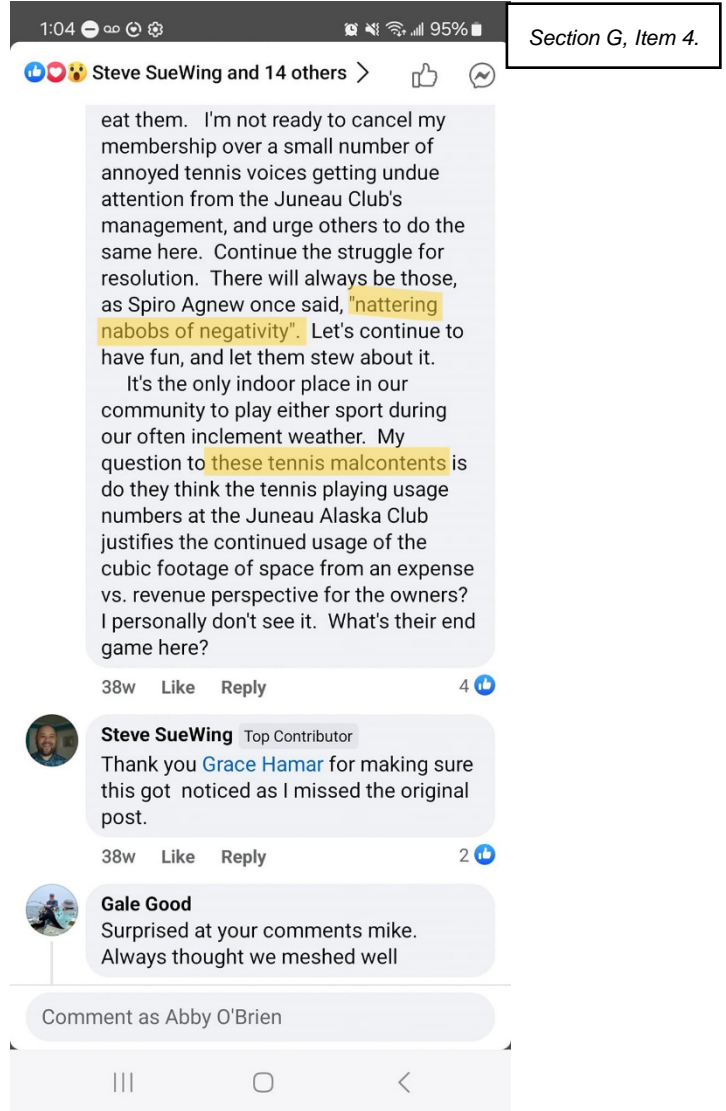
despite losing out on court time and playing space. We are home to the defending high school mixed doubles team in the state, and the year prior, the high school Girls' champion. Reduction of court space would disproportionately affect JSD tennis teams and their ability to practice and compete.

The Capital Cup annual tournament has been re-instated post pandemic, with Juneau traveling to our sister city of Whitehorse, Yukon, to defend its championship title this coming July. We have accomplished this while having to navigate a culture of bullying and harassment from supposed ambassadors of the pickleball community, deeming us "nattering nabobs of negativity" and "tennis malcontents". (Attachment 2)

Continuing to give to a group that has done only taking without reciprocity is the antithesis of a supportive sports community. Should CBJ resurface the courts at Adair Kennedy, then they need to do so by use of maintaining them as a multi-use facility. Keep both existing tennis courts and utilize hybrid lines on the courts so that either community can access the space when needed. (Attachment 3)

The current popularity of one activity does not necessitate the destruction of another long-established pastime. I sincerely hope that CBJ invests in all members of its community when considering utilization of their public funds. Your support and consideration are appreciated.

Thank you,
Abby O'Brien



From: [Sutton, Anne](#)
To: [Parks Rec](#)
Subject: Floyd Dryden courts
Date: Monday, March 4, 2024 4:24:18 PM

Dear members of the Parks and Rec Advisory Committee,

As a tennis player, I want to thank you for planning to have the Floyd Dryden tennis courts resurfaced. It is long overdue. However, I am disappointed to hear that these same plans include getting rid of one of the two tennis courts. Tennis has been for many years and still is a mainstay sport in this town. Our numbers may be fewer than in pickleball but there are still many tennis players in Juneau (including a high school sports team!) and they are no less passionate about their sport. Unlike tennis players, pickleball players also have other venues where they can play, such as the covered basketball courts and Jumbo gym, to name a couple. Meeting the demands of one particular sport by disenfranchising another is unacceptable.

The information packet for Tuesday's meeting states tennis players have the Alaska Club to fall back on. This is really not a fair rationale. The club over the years has gone from seven courts to two and the hours of use of those two courts is now divided in half between tennis players and pickleball players. While tennis opportunities at the club are dwindling, it's worth noting that not every tennis player—or pickleball player—can afford the high fees at the Alaska Club. And please don't discount the particular joy us Juneauites feel to be able to play our favorite sport on those rare, much loved days of sunshine.

I am happy that pickleball is being enjoyed by so many. It is a healthy, happy sport and we need that in these anxious times. However, we do not need this wonderful activity to create conflict and ill will among sports groups by allowing sheer numbers to take away the pleasure and recreation of a smaller group. I beg you to help this community develop a plan to better serve all players and in the meantime allow the courts to be used by both groups.

Thank you.

Anne Sutton

618 Gold ST

From: [New J & S Gmail](#)
To: [Parks Rec](#)
Subject: P & R advisory committee/ FDMS Courts
Date: Monday, March 4, 2024 4:25:47 PM

To: the CBJ parks and recreation advisory committee

Please do not eliminate any of the tennis courts at Floyd Dryden Middle School; they are the only tennis courts open and free to the public in the Valley. My wife and I play both tennis and pickle ball and we do not want to lose a single court.

Both courts can stay as is and accommodate both Tennis and Pickleball with duplicate lines. It would be even better if more court space could be added.

Thank you,

Jeff and Susan Sloss
15775 Glacier Hwy
Juneau, AK 99801

From: [Austin Stefanich](#)
To: [Parks Rec](#)
Subject: Adair-Kennedy Memorial Park
Date: Monday, March 4, 2024 4:30:35 PM

Good afternoon committee members,

I recently learned about the vote tomorrow regarding the tennis courts at Floyd Dryden Middle School.

I am emailing to kindly request that you delay the extreme action of taking one tennis court away from our tennis community. The way it is, on any given (non rainy) day, it is almost impossible as a tennis player to access tennis courts without having to sit on the benches and wait for the hour limit to be up.

There have been times where I have not been able to reserve a court at the Alaska Club, so I drove to Cope Park to find people already waiting to play. I then decided to drive to Floyd Dryden courts in hopes that there was an available court there, only to find the same thing.

The Juneau tennis community is much larger than just people who are members of the Alaska Club. I have multiple friends who are not able to pay to be a member at the Club, and therefore I can only play with them on the outdoor courts. With such limited court access, this is only going to deter people from playing this lifelong sport even more.

In addition, I am the high school tennis coach for the Juneau Schools. Outside of season, many of our players utilize the outdoor tennis courts to practice and get ready for the season that starts at the beginning of August. The Alaska Club is very expensive, especially for our community's youth. To watch their access to tennis courts get cut in half in the valley, would be such a detriment.

Last year was one of our largest teams (with 30 high school students) in the most recent decade and we are only growing. My hope is that their access to tennis courts be preserved, so they can play now, and in the future as members of our community.

Thank you,
Austin Stefanich

From: [David Carnes](#)
To: [Parks Rec](#)
Cc: lrnsmoker458@gmail.com
Subject: Court Reconfiguration at Adair-Kennedy Memorial Park
Date: Monday, March 4, 2024 5:46:44 PM

Members of the CBJ Parks and Rec Advisory Committee:

This letter is in reference to the Court Reconfiguration at Adair-Kennedy Memorial Park as outlined on your March 5, 2024 Meeting Agenda.

My wife and I are now what may be termed casual tennis players. However, in years past we have been active in the Juneau Alaska Club's tennis program and have participated in the Club's competitive tennis program. Tournaments from this program resulted in Juneau taking the state championship, as well as participating in the NW regional program. Juneau representatives also participate in yearly Capitol-to-Capitol tournaments with Whitehorse, YT.

In past years, in addition to the Adair-Kennedy MP courts and Cope Park courts, there were three tennis courts in the location of the Treadwell Arena. These courts were sacrificed by the city's tennis players in order to have a location for an ice-skating rink. Cope Park courts have been redone in recent years, but no longer serve as full tennis courts due to one of them being sacrificed to Pickle ball. **In recent years the Alaska Club has reduced their tennis courts from five to two.** Pickle ball has required the relining of one of the remaining two courts for Pickle ball play making it almost unusable for competitive tennis.

The Alaska Club does not cater to the general public, but requires membership for use of their facilities. I have not seen CBJ's Staff report on tennis court use, but hope that they outlined the individual expense for court use at the Alaska Club. As a long-time member of the Alaska Club, I have had to relinquish my club membership due to the cost of monthly dues. I might add that Alaska Club tennis membership is a different membership than just regular club membership, and is much more expensive.

I recommend the refurbishing of the Adair-Kennedy MP tennis courts and conversion of one of the basket ball courts for Pickle-ball courts. **However, the two tennis courts should remain and be resurfaced and lined for tennis play.** If needed for Pickle-ball play, one of the courts can be relined by chalk for Pickle-ball. **You can make Pickle-ball courts out of tennis courts, but you cannot make tennis courts out of Pickle-ball courts.**

Keeping the two outdoor tennis courts allows for free casual tennis play, as well as the ability to play outdoors. When competing with outside teams it is important to have played on outdoor courts. Adjusting play for wind, sun, and shadows is important for players when training for tennis meets. This experience cannot be duplicated on an indoor court, such as are found in the Alaska Club.

I hope that maximum consideration will be given to the following factors: Lack of outdoor courts at the Alaska Club, closed cost-membership of the Alaska Club, need for outdoor tennis courts in Juneau, and reduction in tennis courts due to Pickle-ball court conversion.

Respectfully, DAVID CARNES 3211 Pioneer Avenue, Juneau, AK 99801

March 4, 2024

Dear Committee Members,

I read the proposal concerning the reconfiguration of the sports courts at Adair-Kennedy Memorial Park and wanted to share my thoughts on this topic which is important to many community members whether they engage in those activities or not. I believe the current proposal to reduce Adair-Kennedy to one tennis court should be very carefully considered and other alternatives explored.

First of all, I play tennis and have also played pickleball. There are many differences between the two activities, but both provide opportunities to improve physical and mental fitness. I believe providing those opportunities to its residents is a crucial role of the City & Borough of Juneau with guidance from the Parks and Recreation Advisory Committee.

Sports Popularity

It is true that pickleball has exploded in popularity in recent years. This is true locally as well as nationally. There is significant support for the activity in Juneau and interested participants should have opportunities to participate. With that said, it is also true that tennis has also increased participation nationally in recent years and tennis participation in Juneau remains strong.

Tennis Courts in Juneau

4 tennis courts would probably be a minimum number of public courts for a city the size of Juneau. This number would support youth development as well as high-school and adult tennis. When you consider that Juneau's existing 4 courts are shared with Juneau's pickleball community, tennis is clearly underserved. Juneau is somewhat weather constrained when it comes to outdoor tennis, but community members are ready to get out and play when the weather is nice. I rate Cope Park very high on my list of scenic places to enjoy the sport – the setting is truly special.

The current courts at Adair-Kennedy are in poor shape which contributes to their lack of use for tennis. A more frequent resurfacing plan and better upkeep would greatly increase demand for the sports courts at Adair-Kennedy as well as Cope Park. There is also competition for the courts during prime hours (i.e., weekends and early evenings in the summer) which discourages casual junior and adult tennis players from getting court time.

The Committee's recommended proposal notes that Juneau has 2 indoor courts at The Alaska Club, a private sports facility. These courts are currently used for both tennis and pickleball. By default, they provide the only tennis programs for Juneau youth and are the only viable (i.e., indoor) courts for the high school tennis season. Membership fees are cost prohibitive for many potential participants, and court usage declines considerably in the summer when tennis participants look to experience the joy of outdoor tennis in Juneau's beautiful settings. There is no guarantee that the Alaska Club or a future owner will retain these courts indefinitely.

Tennis Courts vs Pickleball Courts

I have read many articles over the past 5 – 10 years as I have tried to better understand the conversion of tennis courts to pickleball only or shared pickleball/tennis. In many instances, the tennis courts were underutilized, particularly those held privately. In other instances, I believe the pickleball community in those areas was looking for a suitable court surface with fencing to minimize the time spent chasing balls, and they saw existing tennis courts and other enclosed sports-surfaced areas as a quick and easy solution – not necessarily the best long-term solution.

In Conclusion

Tennis for me is a life-long sport that I have played for 50 of my 62 years. I feel fit and healthy and attribute that to the habits developed through tennis and other athletic and recreational activities available to the public in the communities where I have lived.

I believe the committee should come up with a long-term (5 – 10 year) plan for court facilities that includes tennis, pickleball and other sports. Expansion of these facilities should occur if necessary. Favoring one activity to the detriment of another because it is currently the “hot” activity seems short-sighted. Please do not approve any motions that would reduce the number of tennis courts at Adair-Kennedy.

Sincerely,



Mark Poplis
Juneau, AK

From: [Gale Good](#)
To: [Parks Rec](#)
Subject: Floyd Dryden tennis courts
Date: Tuesday, March 5, 2024 6:25:39 AM

Please don't eliminate the tennis courts. I play tennis 6 hours a week and have to pay 150\$ a month at private club. I also pay taxes for schools and don't have kids. What's wrong with this picture?

Sent from my iPhone

From: [George Crowder](#)
To: [Parks Rec](#)
Subject: Valley tennis courts
Date: Tuesday, March 5, 2024 9:21:55 AM

When I moved to Juneau there were 7 public tennis courts and 4 tennis courts at the Juneau Racquet Club

They removed the 3 courts in Douglas for the ice rink.

The JRC removed 2 courts in the valley.

Our population has almost doubled during this time and now tennis shares all 6 courts (2 at Cope Park; 2 at Floyd Dryden; 2 at JRC) with a growing number of Pickleball and Tennis players.

We should be looking at expanding these recreational opportunities as opposed to reducing them.

There are many youths that play tennis and pickleball in town. They compete for time on the courts with many adults.

Please do not take any more courts away.

Thanks for your understanding.

George Crowder

Sent from my iPhone

From: [Bill Kramer](#)
To: [Parks Rec](#)
Subject: Parks and Rec Meeting, March 5, 2024, Public comments
Date: Tuesday, March 5, 2024 11:29:17 AM

March 4, 2024

Dear Parks and Recreation Department,

I am writing to express my strong opposition to the proposal to eliminate one of the two existing tennis courts at Adair-Kennedy Memorial Park in order to create additional pickleball courts. While I understand the popularity of pickleball, removing a public tennis court is detrimental to the tennis community in Juneau.

The justification provided that indoor tennis courts are available at the nearby private Alaska Club is misleading and fails to consider the financial realities that many Juneau residents face. With monthly membership fees over \$150, the Alaska Club is simply not an affordable or accessible option for many public tennis players and families. Suggesting that this private facility can substitute for maintaining adequate public tennis courts is unfair.

Juneau's public parks should aim to provide recreational opportunities that are free and open to all residents, regardless of income level. Eliminating one of just two dedicated public tennis courts would severely limit access for those who cannot afford expensive private club memberships.

Furthermore, the local high school tennis team had 30 members last year and expects similar membership this year. These student-athletes need outdoor public courts to practice and play during the spring and summer seasons when good weather allows. Reducing the limited stock of public courts will make it difficult to accommodate the high school team players.

I suggest exploring "hybrid" striping options that allow courts to be used for both tennis and pickleball. Many public courts have taken this approach to enable flexible use for multiple sports on the same surface. Pickleball can also be played on basketball courts if they have the hybrid striping. This would help accommodate pickleball while still maintaining the existing tennis court capacity. In addition, dedicated court hours for each group might help resolve issues between competing interests.

I urge you to reconsider this proposal, and maintain both existing tennis courts at Adair-Kennedy Memorial Park, and evaluate hybrid striping as

a solution to enable use for multiple sports. Providing adequate facilities for tennis and pickleball and basketball should be the goal.

Thank you for your time and consideration of my concerns.

*Respectfully,
Bill Kramer*



TO: Chris Mertl, Chair Parks and Recreation Advisory Committee
FROM: Michele Elfers, Deputy Director Parks and Recreation
DATE: September 6, 2022
RE: Christopher Trail Reroute

Trail Mix and Parks and Recreation staff are proposing a change to the Christopher Trail corridor to avoid a steep, erosive slope and to minimize bike and pedestrian conflict on the Flume. The lower section of Christopher Trail has been closed for a few years due to an eroding section of the Gold Creek bank and Trail Mix has been planning to reconstruct it this year. The planned improvements would likely only last five or ten years and then major maintenance would have to be done again to keep the trail open along this slope. However, this slope can be avoided and a more stable route is possible by installing a bridge further downstream on Gold Creek. This option had been deemed too expensive in the past but now a bridge is being removed from the Kaxdigoowu Heen Dei Trail with the appropriate span and can be used at Cope Park.

As part of a Transportation Alternatives Program grant, ADOT will be replacing the pedestrian bridge over Montana Creek on the Kaxdigoowu Heen Dei Trail next summer. The bridge span is too short as Montana Creek is incising and widening, however the bridge is in good shape, with an appropriate span for Gold Creek.

Trail Mix has identified and flagged a new route for the Christopher Trail that starts at the lower asphalt plaza and picnic area and joins up with the existing route of the Christopher Trail on the North (Mt. Juneau) side of Gold Creek. The trail then crosses the flume and continues uphill to an existing old bench road above the flume and connects to Perseverance Trail.

The proposed trail alignment will be safer, requires less maintenance and will help to resolve issues along the flume of pedestrian and biker conflict. A 1989 agreement between CBJ and AELP outlines ownership and management of the flume structure and trail. AELP owns the flume structure and maintains it. CBJ maintains the pedestrian walkway atop the flume structure including the deck boards and hand rails. The agreement states that no bikes, skateboards, skates, skis, sleds, motorbikes, wagons, ATV's or rollerblades can use the flume. Bikes do use the flume and CBJ receives complaints from the public about the conflict in use as the flume is narrow and can't accommodate a bike and pedestrian side by side in some areas.

The proposed trail would create a connection for bikers from Perseverance trails to Cope Park pump track and lower downtown. By designing the trail as a fun bike trail for beginners with some low rollers, it will encourage biker use and move bikers off of the flume. The trail could also be used by pedestrians, and the low rollers are easy to walk over. Juneau Mountain Bike Alliance (JMBA) is supportive of this proposed route and plan.

The proposed route as shown on the attached map passes through CBJ, AELP, AJT, DNR and private land. CBJ will need to develop easements with AELP, AJT and DNR for the trail corridor. Staff requests a motion of support from the PRAC to obtain easements for the Christopher Trail corridor with AELP, AJT and DNR.

**PARKS & RECREATION ADVISORY COMMITTEE****TUESDAY, SEPTEMBER 6, 2022 – 5:30 PM****Zoom Webinar****I. Call to Order at 5:32 p.m. – C. Mertl, Chair**

Present: Makayla Chappell, Emily Haynes, Brandie Hofmeister, Chris Mertl, Will Muldoon, Taylor Murph, Danika Swanson

Absent: Josh Anderson, Christina Mounce

Staff Present: George Schaaf, Director; Michele Elfers, Deputy Director; Lauren Verrelli, Recreation & Public Services Manager

II. Agenda Changes – None**III. Approval of Meeting Minutes – None****IV. Public Participation on Non-Agenda Items – None****V. New Business****A. Christopher Trail Reroute**

M. Elfers presented the proposed reroute for the Christopher Trail to avoid a steep erosive slope and to minimize bike and pedestrian conflict on the Flume. Included in the proposal is the relocation of a bridge from the Kaxdigoowu Heen Dei Trail to Christopher Trail. This relocation will be grant funded.

Ryan O'Shaughnessy, Trail Mix, explained the new trail route allows for bikers to enjoy the trail with less conflict with hikers. Trail Mix worked with Parks & Rec and it was decided that locating the bridge in Cope Park would be a good fit and the location would allow for easy access for the heavy equipment necessary to move and install the bridge.

B. Hofmeister – Has the homeowner been consulted? Does the department see any downsides to the project?

Ryan O'Shaughnessy – Trail Mix has been in touch with the homeowner and they have expressed support. They will meet again and have more discussion but scheduling the meeting has been a challenge.

M. Elfers - Possible downsides include that the trail will still cross landslide areas. This is due to topography in the area. Like other trails in steep areas, they will design, build, and maintain the trail accordingly.

B. Hofmeister – Is there a chance of increased user conflict?

M. Elfers - The trail will be built with bicyclists in mind but it will not be exclusively for bicyclists. There will be signage so it will be known that it is a bike trail but hikers will be able to use it. They should know to give right of way to the bicycles.

W. Muldoon moves that the Parks and Recreation Advisory Committee recommends that the Department pursue obtaining leases with AELP, AJT and DNR for the Christopher Trail Reroute. **Adopted.**

B. Policy No. 700-002 – Amplified Sound Permits

G. Schaaf – explained the amplified sound policy for CBJ allows for people to obtain a permit and avoid disturbing the peace charges if neighbors complain. In general, most forms of speech are protected under the First Amendment, including amplified sound. The purpose of the permits is, in part, more to remind people to be courteous to the neighborhood by observing time and noise level limits in the permits.

W. Muldoon – Which are the parks that have the most noise complaints? Do we have a definition in code for what is ‘reasonable’ noise level?

G. Schaaf – The Disturbing the Peace ordinance is at 42.20.095(b)(2). Melvin Park gets the most complaints regarding lighting but Savikko Park and Adair Kennedy Memorial Park receive the most noise complaints.

E. Haynes – Would the permits be written into code?

G. Schaaf – It does not need to be added as it is covered by 42.20.095(e).

C. Mertl – When applying for a permit, do people need to say what the event is that they are permitting?

G. Schaaf – They don’t but we can ask Law if we can or should.

C. Mertl – Do Park Rangers have authority to enforce this?

G. Schaaf – They do not have authority to enforce amplified sound.

E. Haynes moves that the Parks and Recreation Advisory Committee recommends that the Department adopt the Amplified Sound Policy No 700-002. **Adopted.**

C. Board Assignments

Chair: C. Mertl (nominated by W. Muldoon)

Co-Chair: W. Muldoon (nominated by M. Chappell)

VI. Unfinished Business – None

VII. Staff Reports – None

W. Muldoon – What is the plan for opening Capital Park?

M. Elfers – The park will be open in the fall but the Grand opening is planned for spring.

VIII. Committee, Liaison, and Board Member Reports

A. Chair Report — None

B. Liaison to the Assembly Report — None

C. Liaison Reports —

Aquatics – W. Muldoon: Met over the summer and have hired a new Aquatics Manager. Also, introduced a resolution to change membership requirements to help with recruitment.

YAB – J. Anderson: None.

Eaglecrest – None

Jensen-Olson Arboretum – None

Lands, Economic Development, Housing – C. Merti: They've met and have been talking about downtown restoration and downtown housing. Tlingit & Haida housing said that if they are able to develop the Pedersen Hill lots then they will set aside some of the land for park development.

Park Foundation – M. Elfers: Community Day event occurred at Eagle Valley Center in late August. About 200 people participated. It was a success.

Treadwell Arena Board – None

Trail Mix – E. Haynes: None

1% for Art – J. Anderson: None

Other Member Business – None

Adjournment – 6:27 p.m. *Having no other business before the board.*

Respectfully submitted by Kathleen Jorgensen Business Assists (907)723-6134

Christopher Trail Proposal

