



JUNEAU COMMISSION ON AGING WORKGROUP SUBCOMMITTEE AGENDA

May 13, 2025 at 3:00 PM

Zoom Webinar

<https://juneau.zoom.us/j/82442177751?pwd=Y4xxvhXb6L2fFmL2IDkWD9aTw9H1wn.1>

Or Call In: 1-253-215-8782 Meeting ID: 824 4217 7751 Passcode: 111520

Please note, this Zoom link is different from Regular JCOA meeting Zoom link

A. CALL TO ORDER/ROLL CALL

Present:

Absent:

Others Present:

B. APPROVAL OF AGENDA

C. AGENDA TOPICS

1. Age-Friendly Community Planning

D. COMMITTEE MEMBER / ASSEMBLY LIAISON COMMENTS AND QUESTIONS

E. NEXT MEETING DATES - at 3pm via Zoom (check top of agenda for correct Zoom link)

May 20, 2025 - JCOA Regular Meeting

May 27, 2025 - JCOA Workgroup Meeting

F. SUPPLEMENTAL MATERIALS

G. ADJOURNMENT

ADA accommodations available upon request: Please contact the Clerk's office 36 hours prior to any meeting so arrangements can be made for closed captioning or sign language interpreter services depending on the meeting format. The Clerk's office telephone number is 586-5278, e-mail: city.clerk@juneau.gov.



JUNEAU AGE-FRIENDLY COMMUNITY PLANNING JUNE 2025

EXECUTIVE SUMMARY

Following is phase one of the Age-Friendly Community Plan for Juneau, Alaska. We joined the Age-Friendly Network in late 2023 and are submitting our plan after a 6-month extension. The plan has been prepared as a joint effort of the AARP Community Action Team of Juneau and the Juneau Commission on Aging, as well as engaging community partners. This plan will also be submitted to the City and Borough of Juneau for consideration during their five-year Comprehensive Planning process that began this year. Our goal is to weave senior/elder issues into all phases of our community planning processes as we develop our Age-Friendly Plan.

AGE-FRIENDLY COMMUNITY PLANNING – JUNEAU ALASKA
LETTER OF SUPPORT FROM MAYOR

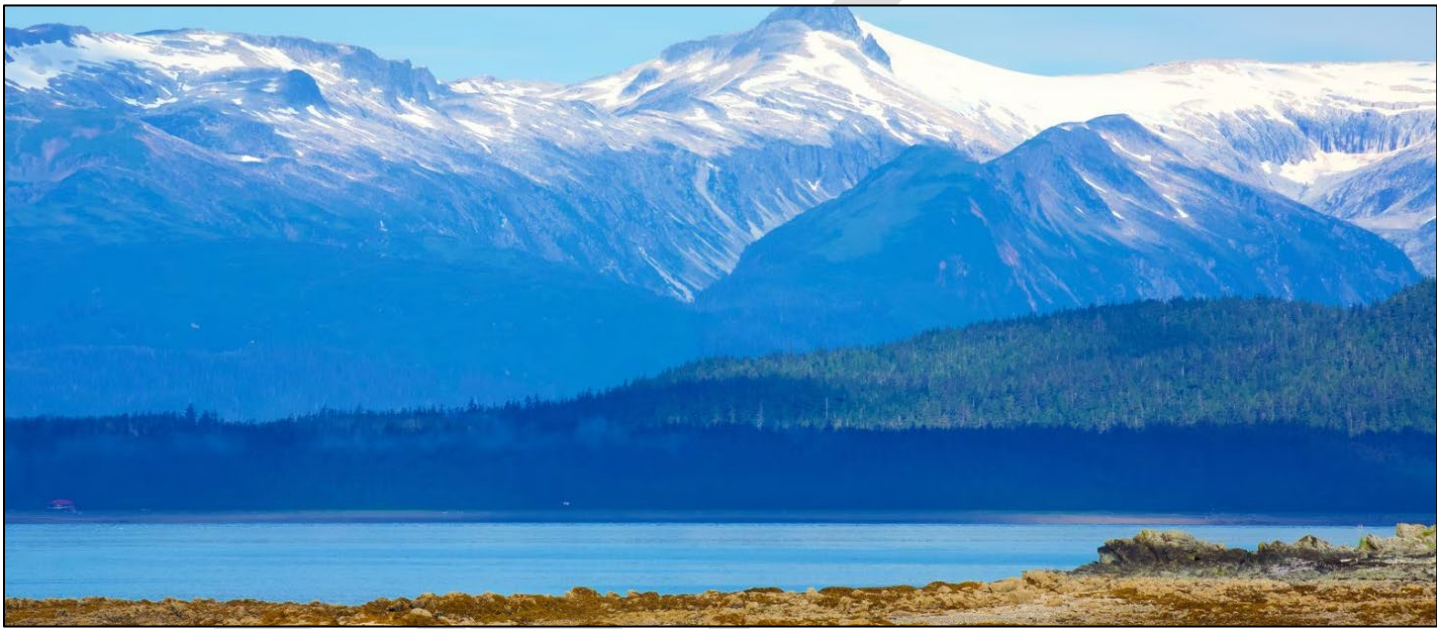
Section C, Item 1.

DRAFT

COMMUNITY PROFILE

Alaska's capital is a land locked southeast coastal rainforest community located in a unique geographical area surrounded by glaciers, mountains, and tidal waters.

The Tlingit people and their clans were well established and actively trading in Southeast Alaska when European explorers made their first advances into the Gastineau Channel in the 1700s. The A'akw and T'aak̓u Kwáan maintained thriving villages in the Juneau, Auke Bay, Douglas and Taku River area for over 750 years.



In the late 1800s rumors of gold findings lured prospectors to the Gastineau Channel and in 1880 and 1881 Juneau and Douglas were founded as townships. Soon Douglas was operating one of the world's largest hard rock gold mines. By the mid-1900s, the Juneau was operating three mines and became the capital of the territory. It was also a travel and trading hub in and out of Alaska with regular Canadian Pacific Steamship arrivals and departures. In the 1920s Filipino workers were brought to Juneau to work in the mines, and the canneries and many stayed and married contributing to our community and cultural fabric.



Alaska achieved statehood in 1959 and Juneau became the capitol of the 49th state. Today, the City and Borough of Juneau is the second largest (square miles) municipality in the United States and is a vibrant and diverse multicultural city of about 32,000 people. Our Capitol conducts state business and houses the legislature from January-May.

Alaska has always experienced surging economic periods: fur trade, gold, fisheries, military, oil and gas.

AGE-FRIENDLY COMMUNITY PLANNING – JUNEAU ALASKA

and now tourism. Over a million summer visitors contribute to the tourism industry and experience our rich wilderness and cultural experiences. Regional and local Native Corporations headquartered in Juneau benefit tribal citizens and share native culture and history. Two productive mines operate outside the city. The University of Alaska Juneau offers advanced education with about 3000 students actively attending classes. Additionally, Juneau has an active parks and recreation program and a robust boating community with four harbors and houses the third largest fishing fleet in Southeast Alaska.



Juneau continues to be home to a strong community of Alaska Native families, a magnet for young people seeking adventure and has become the home of a high number of active, healthy seniors: almost 30% of Juneau's residents are over 55. Juneau's seniors tend to be homeowners, active in the community and contributors both financially and as volunteers.



CITY AND BOROUGH OF
JUNEAU
ALASKA'S CAPITAL CITY

OFFICE OF THE CITY CLERK General Information Boards & Committees MUNICIPAL ELECTIONS Contact Us

JUNEAU COMMISSION ON AGING – JCOA

Empowering Juneau's Seniors

JCOA's mandate is to advise the CBJ Assembly on actions and policies that improve the quality of life for seniors. Our mission is to provide CBJ with proactive, coordinated, culturally sensitive and holistic strategies to support Juneau seniors' unique needs as we age in this community we love and call home.

SENIOR SERVICES IN ALASKA & JUNEAU

JCOA PRIORITIES

JUNEAU SENIOR SURVEY

AGE-FRIENDLY PLANNING

SENIOR PROFILES

COMMISSIONERS

CALENDAR / CONTACT US

VOLUNTEERS

ACTIVITIES

Get out and play! Visit a friend!

Aging! So cool, everyone is doing it!

The City and Borough of Juneau reinstated the Juneau Assembly appointed Commission on Aging (JCOA) in 2017 to continue the early work of advocating for Seniors within the community and have an established website for disseminating news:

<https://juneau.org/clerk/boards-committees/jcoa>

The JCOA also provides monthly updates to the community on the local Public Radio Station during "Juneau Afternoon" Radio show.

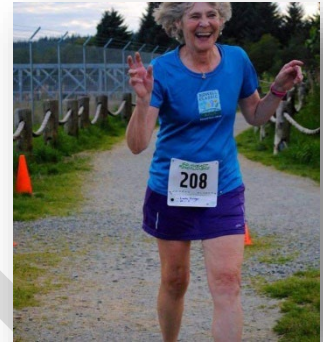
AGE-FRIENDLY COMMUNITY PLANNING – JUNEAU ALASKA

MISSION, VISION AND VALUES



MISSION STATEMENT: Our mission is to support a community where all people live with dignity and purpose and are able to fulfill their goals and dreams in an inclusive, equitable, age and ability friendly Juneau. (Seniors on Mt. Juneau, Alaska)

VISION: Juneau is a livable vibrant community that is safe and accessible, and supports age and ability friendly actions by empowering residents, fostering collaboration, and implementing innovative strategies that enhance accessibility, social connection, and quality of life for individuals of all ages and abilities.



VALUE STATEMENTS

1. Inclusion: We value our community's diversity and strive to create a welcoming environment where all residents, regardless of age or ability, can thrive.
2. Equity: We are committed to addressing systemic disparities and ensuring that resources, opportunities, and programs are accessible to all, particularly marginalized and underserved groups.
3. Collaboration: We believe in the power of partnerships and work collectively with residents, organizations, and policymakers to create sustainable solutions.



4. Empowerment: We aim to empower individuals through education, resources, and opportunities, enabling them to lead fulfilling, independent, and connected lives.

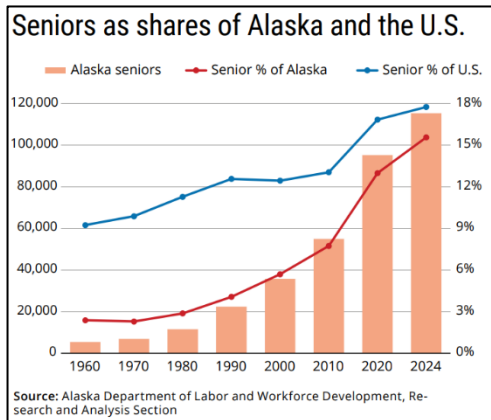
5. Innovation: We embrace creative approaches and adaptive strategies to address the evolving needs of our community.

6. Sustainability: We prioritize long-term impact and resilience, ensuring the success of age & ability-friendly initiatives for generations to come.



AGE-FRIENDLY COMMUNITY PLANNING – JUNEAU ALASKA

COMMUNITY PROFILE



The number of Alaskans 65 or older has skyrocketed over the last decade and a half, continuing to rise even as youth and working-age populations have declined. Today, seniors play a bigger role in Alaska than they ever have. As Alaska has always been a young state, this shift toward an older population is one of the ways Alaska has begun to look more like the rest of the country. The highest concentration of seniors are in Southeast Alaska, of which Juneau is the largest community. Juneau's Senior population (60+) has steadily grown 39% (3.3% annually) between 2012 and 2021. There are 11,494 seniors 50+ living in Juneau. 3,997 are AARP members.

Juneau Commission On Aging

2020 Senior Survey Findings

Seniors are healthier and better off than in previous survey years:

- 28.7% of Juneau residents are 55 and older**
- 84% own their own homes and pay taxes
- 80-90% (depending on age) drive the car
- 63% volunteer in the community
- 95% over 65 have Medicare
- 66% over 65 have Medicaid
- 40% have Long Term Care Insurance
- 42-46% (depending on age) are in the high school education class
- 72 – 84% (depending on age) are active (walking, hiking, etc.)

** AKDOL has updated the

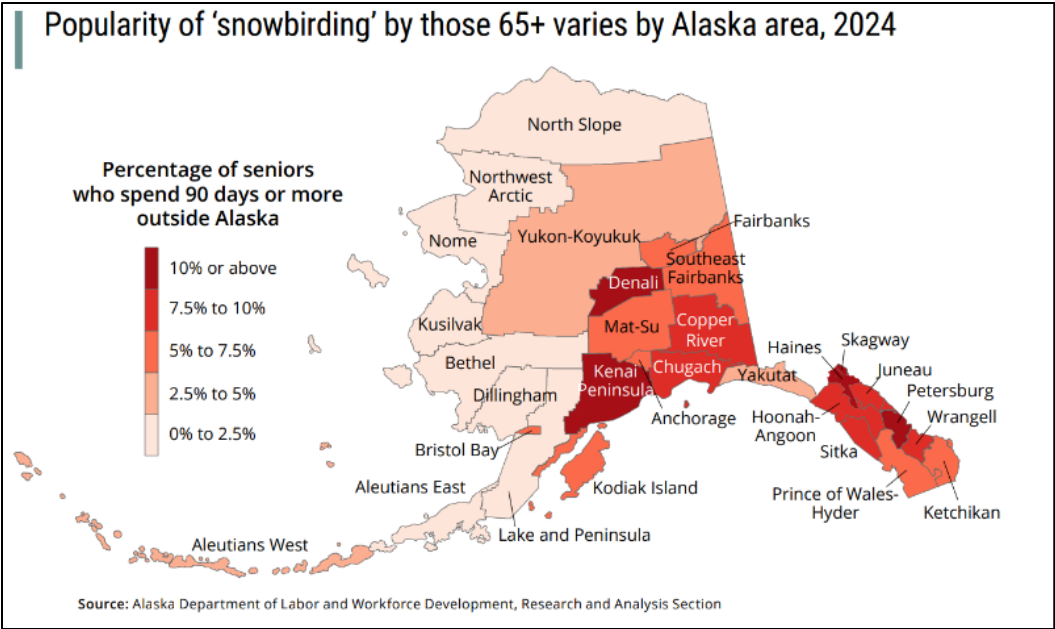


The City and Borough of Juneau facilitates a Senior Survey every decade via the Juneau Commission on Aging. In 2020, the JCOA reached out to a broad swath of the community for the fourth Senior Survey in 40 years and found that seniors are a growing demographic that is doing generally well due to a number of factors.

“It’s a common perception that Alaska retirees move south for warmer weather or the services they can’t get in Alaska. The massive growth in the 65-plus population puts to rest the idea that they all flee after retirement — but given Alaska’s 12-year streak of negative net migration, that raises the

AGE-FRIENDLY COMMUNITY PLANNING – JUNEAU ALASKA

question: How much has the larger elder population contributed to the overall outflow? People relocate less as they get older and while seniors have always been a low percentage of movers, they have increasingly influenced net migration numbers in recent years.” (AK DOLWD)



Even though outflow continues to increase, the senior population continues to grow in Alaska, particularly Southeast but senior outflow has “created an undertow to the state’s migration numbers that didn’t exist before, which has baked in a steady net loss”. SE Seniors continue to bring significant value to the community and

are a resource that the Juneau Commission on Aging has focused on ensuring the community recognizes and works to keep Seniors in community. This will be accomplished by ensuring Age Friendly Community values are recognized and promoted.

AARP PUBLIC POLICY INSTITUTE LIVABILITY SCORES FOR JUNEAU AREA

Characteristics of Juneau Borough, Alaska

Demographics

Total Population: **32,108**

Black/African American: 1%

Asian American: 7%

Hispanic/Latino: 7%

White: 64%

American Indian/Alaska Native: 9%

Hawaiian: 1%

Two or More Races: 15%

Some Other Race: 2%

Age 50+: 35%

Age 65+: 15%

% of the population with a disability: 12%

Life Expectancy: 81 years old

Households Without a Vehicle: 9%

Median Household Income: \$98,191

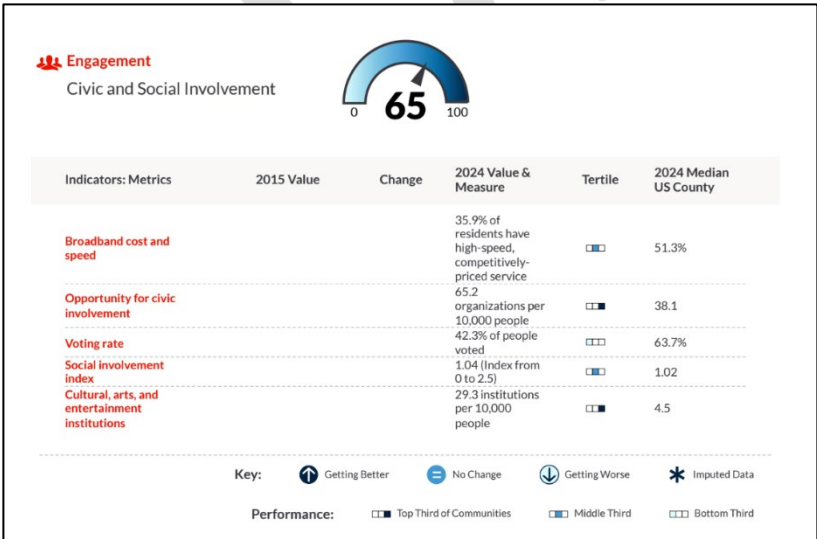
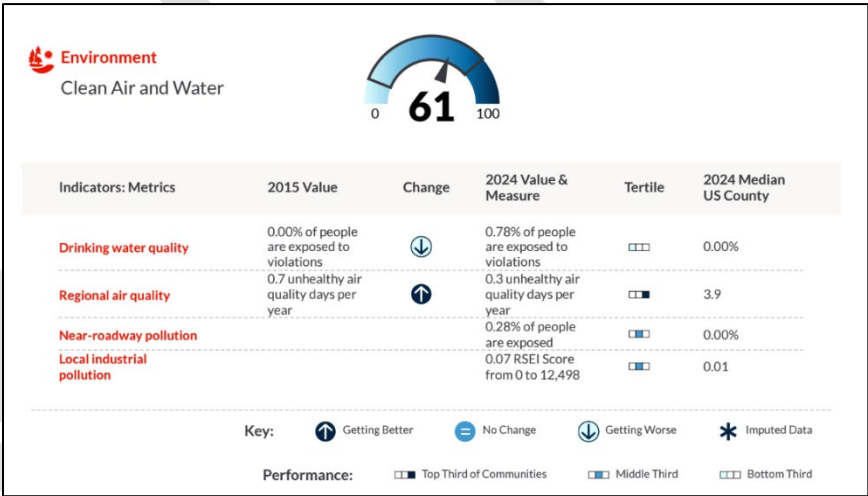
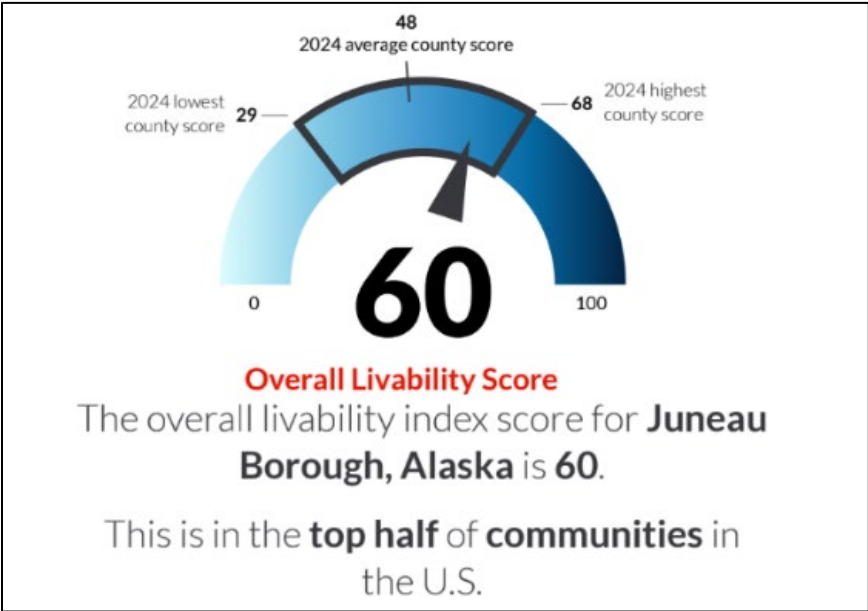
% of the population with income below poverty: 7%

Upward Mobility : 76

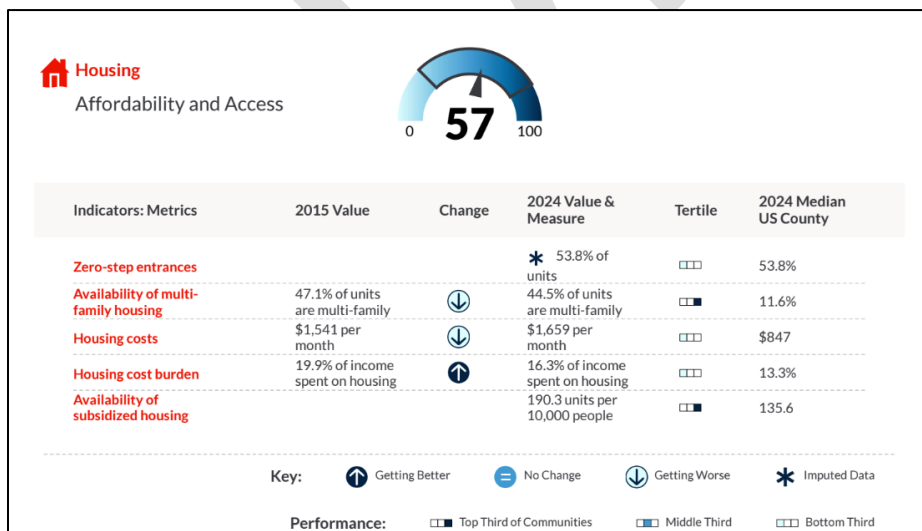
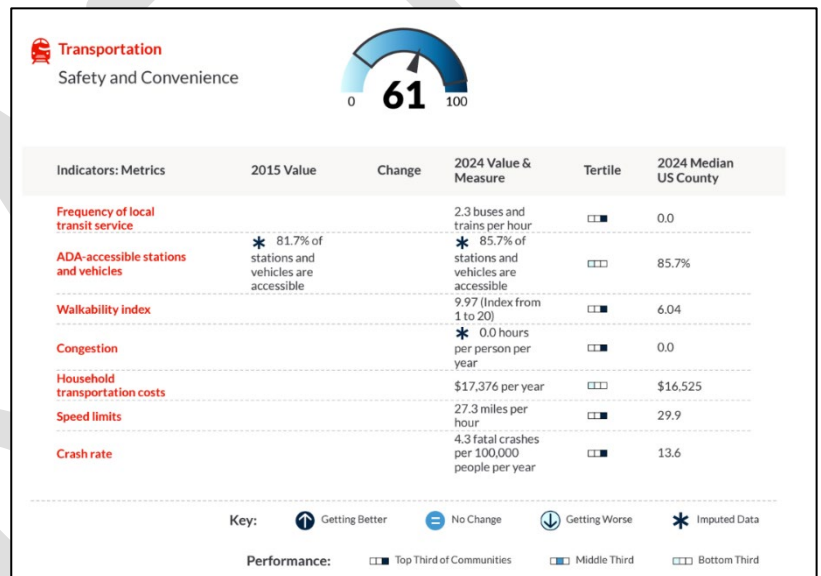
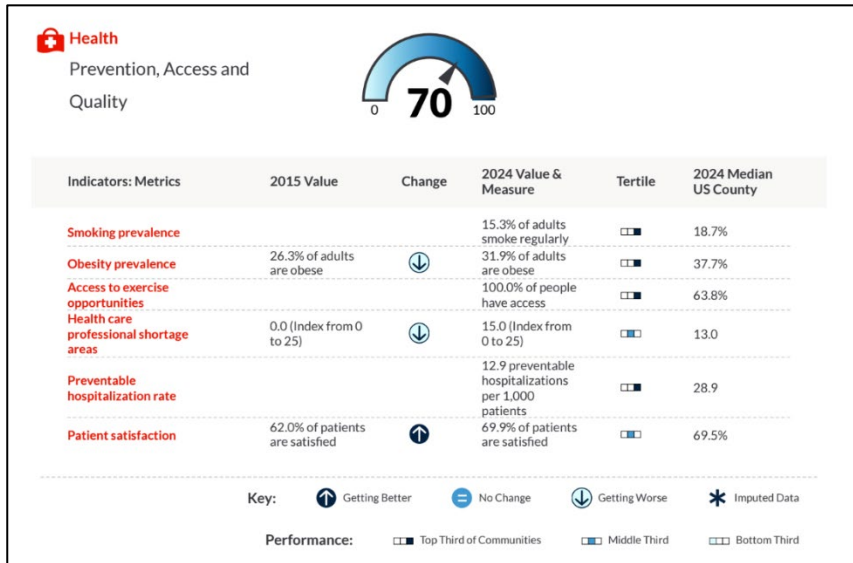
Climate

2023 Temperature	January	July	2023 Avg. Precipitation	January	July
Lowest	21°	43°		19"	4"
Average	26°	50°			
Highest	30°	57°			

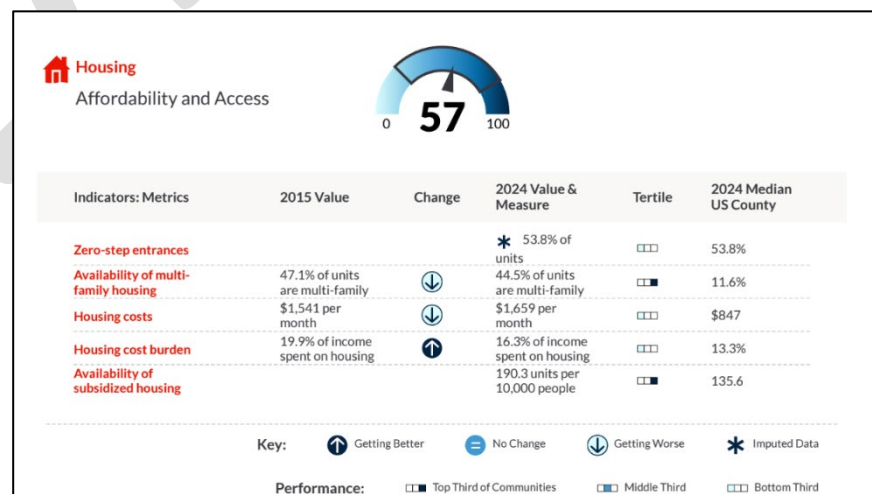
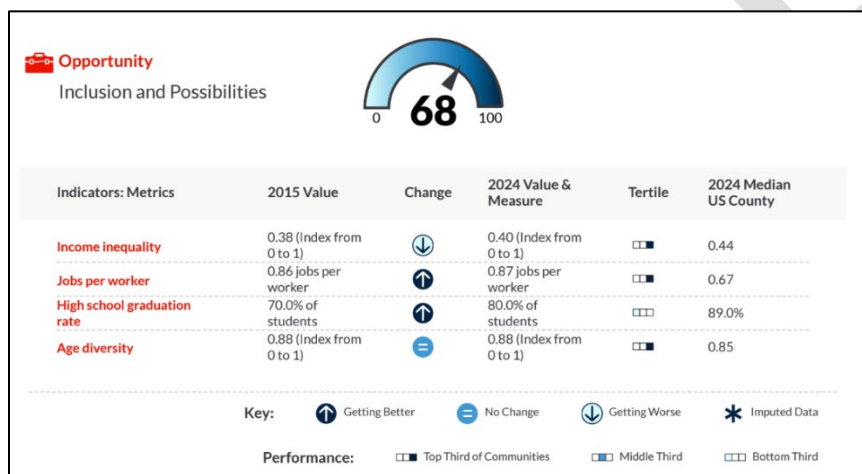
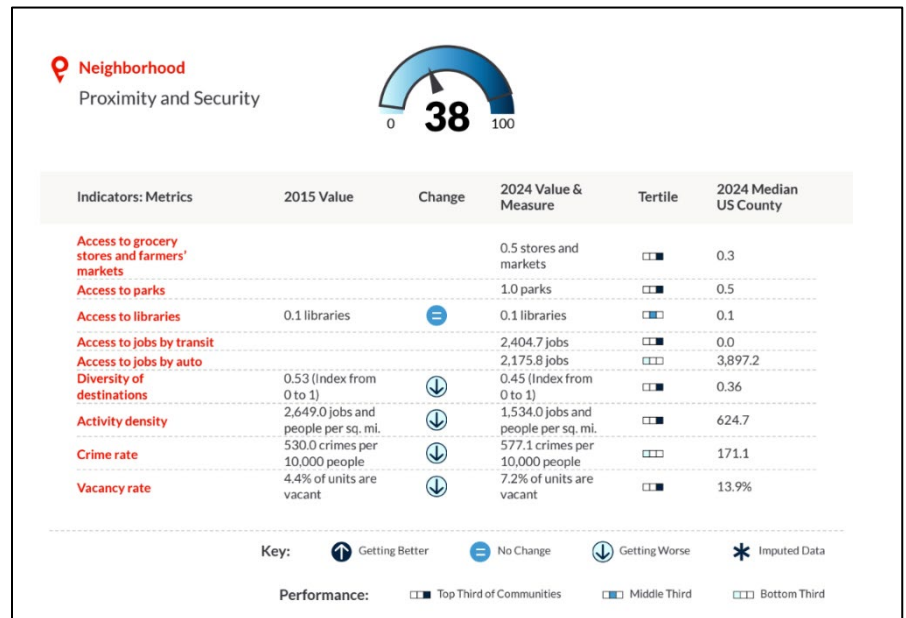
AGE-FRIENDLY COMMUNITY PLANNING – JUNEAU ALASKA



AGE-FRIENDLY COMMUNITY PLANNING – JUNEAU ALASKA



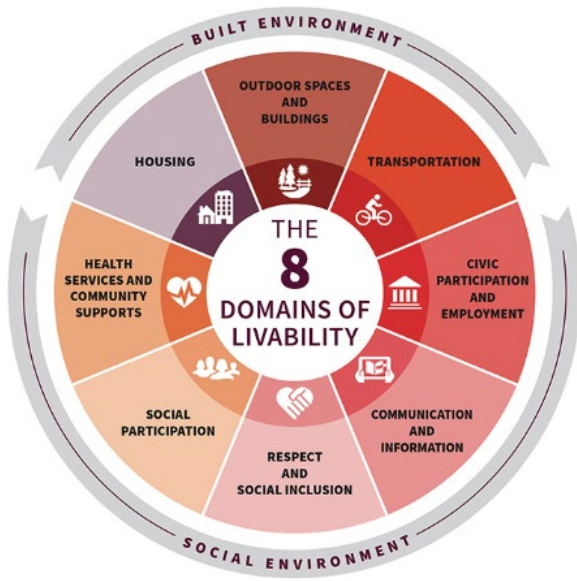
AGE-FRIENDLY COMMUNITY PLANNING – JUNEAU ALASKA



SUMMARY OF COMMUNITY ASSESSMENTS

Survey and Listening Sessions 2023 and 2025

In celebration of National Older Americans Month in **May 2023**, the Juneau AARP Community Action Team (CAT) and the Juneau Commission on Aging (JCOA) co-sponsored three listening sessions to gather information for Age-Friendly Juneau planning. In early 2023 Juneau became the second Age-Friendly community in Alaska. The co-chairs of Age-Friendly Juneau at the time, Dr. Emily Kane (Chair of the Juneau Commission on Aging) and Linda Kruger (Lead for the AARP Juneau CAT), announced the kick-off of Age-Friendly Juneau and the listening sessions on KTOO Radio's Juneau Afternoon program. The listening sessions were held on consecutive Tuesdays at the three local libraries.



Eight flip charts, representing each of the Age-Friendly domains, were posted around the room. A ninth flip chart welcomed comments that didn't fit any of the eight categories or applied to more than one. Participants wrote comments and suggestions on post-it notes and posted them on the appropriate flip chart pages. Several participants completed a long questionnaire providing detailed suggestions for improving Juneau for seniors.

In addition to JCOA and CAT members (who had lots of ideas!) around twenty-five members of the public participated in the sessions. Several people who could not attend in person submitted comments by email.

After a short introduction about the AARP Age-Friendly Network, the AARP-CAT and Juneau COA, there were lively discussions of what could help Juneau become more Age-Friendly. Comments and suggestions from the listening sessions, completed questionnaires (hard copies and online), and other comments that are received will be compiled into a report and provide the background for a five-year plan for moving Age-Friendly Juneau forward. Suggestions included: a dedicated senior center for presentations, information (with a navigator), social events and games, and senior exercise classes; transportation to senior events and congregate meals and provision of transportation services out past the ferry terminal; an affordable, pedestrian friendly, small-scale co-housing village for seniors; CBJ support for home modifications to help seniors stay in their homes; senior specific exercise classes; more in-person social activities and programs for seniors; an Age-Friendly Day; Hospice and Homecare services; and additional affordable and accessible senior apartments.

To be more inclusive the Age-Friendly Juneau co-chairs reached out to groups in the community who may not have participated in the listening sessions. Several individuals completed an online or paper questionnaire. The most responses that were received related to the Age-Friendly Domains of

AGE-FRIENDLY COMMUNITY PLANNING – JUNEAU ALASKA

Social Participation, Communication and Information, Outdoor Spaces and Buildings, Civic Participation and Employment, and Health Services and Community Supports. Housing and Transportation were close behind leading us to include each of these domains in our workplan. We decided it is also important to include Respect and Social Inclusion since these are key foundations of whatever is implemented. We also recommend working with other community groups to address Community Emergency Preparedness.

Additionally, AARP held additional listening sessions in **February of 2025** using a similar model of data gathering. The following represents the input first from the 2023 Listening Sessions, then input updated from the 2025 Listening Sessions.

Outdoor Spaces and Buildings

Concept: Availability of safe and recreational facilities.

2023: Community members expressed a desire for a **Community Senior Activity Center** with fitness center/gym and meeting spaces for classes and gatherings in a central location; community gardens – Mendenhall Valley Library; group walks and socials; indoor and outdoor walking opportunities (recovery from surgeries, fitness, socializing); complete Brotherhood Bridge Trail look through Vintage Park; publish a directory of places people with limited mobility can connect with nature/accessible trails; more trails for seniors and mobility impaired people, and more benches on trails; improve rain canopies (2nd and Seward, St., by the courthouse on Seward St.), add lights on walking trails near Thunder Mountain Middle School, Vintage Park – Brotherhood Bridge Trail; add **indoor senior walking hours** at area schools, walking track downstairs around the turf at Dimond Park.

2025: Community members expressed interest in the Park Fieldhouse and use of the **Marie Drake Gym**, safe and accessible public spaces, especially more covered areas (corner of 2nd and Seward, next to the Court House, etc., more indoor meeting spaces - (**community center**), more community gardens (near the Valley Library), more indoor and outdoor walking opportunities for all abilities and completion of the Brotherhood Bridge Trail Loop.

Transportation

Concept: Safe and affordable modes of private and public transportation.

2023 Community members expressed a desire for improved cross walk safety - need more flashing cross walk lights (like at the Egan Drive-- Glacier Ave access to Juneau Seawalk); bus stop needed near Global CU and Petro One Station; more weatherproof bus shelters; transportation for events such as the Juneau Symphony, Perseverance Theatre, etc.; improve Capital AKcess (Care-A-Van) and bus service for seniors, including past DeHarts and Lena Loop; easier access to obtain a senior pass; Senior Day with bus service to pools, libraries, grocery stores, Bartlett, etc.; Improve sidewalks and crossings, especially around Riverview Senior Living, Trillium Landing and Vintage Park; help with snow removal on sidewalks and driveways.

2025 Community members expressed interest in: safe and accessible public spaces, especially more covered areas, “Make all buses on Mendenhall Loop go the same way”, many crosswalks need flashing lights (like the Egan to Sea walk crossing) - at 4 Points Hotel, Cordova and Douglas Highway and others, bus stop is needed near the Global Credit Union and Petro Gas Station across from Fred Meyers and transportation to events similar to a Senior Uber/Lyft Service, especially for community events like concerts and plays

AGE-FRIENDLY COMMUNITY PLANNING – JUNEAU ALASKA

Housing

Concept: Availability of home modification programs for aging in place as well as range of age-friendly housing options.

2023: Community members expressed a desire for: Affordable, first floor senior units are needed; update code to include universal design features; tiny homes, cottages, or apartments for homeless; small scale affordable co-housing, apartments, and cottages for seniors; (Riverview is “too expensive for many” and Fireweed Place and Trillium Landing are “too industrial.”) Lower property taxes, grandfather in lower tax rates, or have a ceiling for seniors; home modifications are needed- SAIL has done home evaluations for senior safety features; home modification stipends are desired.

2025 Community members expressed interest in: Affordable, accessible senior housing.

Social participation

Concept: Access to leisure and cultural activities, including opportunities for older residents to socialize and engage with their peers as well as with younger people.

2023: Community members expressed a desire for: Community Senior Activity Center; Geocaching, movies for grown-ups, share your love and talents campaign, senior activity center with movie nights, music nights, game nights, daytime events for seniors who don’t drive at night, card game clubs, senior lunches, transportation to events, book clubs, partner with senior living facilities for events, art classes, music events; JACC hosted senior events; senior movies at Goldtown Theater; tiny homes or cottages would promote social engagement; AARP driver’s safety and other classes; a dedicated senior activity center and scheduled activities at public libraries; arts and craft classes, AARP events, community gatherings and celebrations, counseling services.

2025 Community members expressed interest in: a **Community Senior Activity Center** with art classes, exercise, movie nights, card and game nights, music nights and events during the day for seniors who don’t drive at night, free senior lunch programs, book clubs, group walks, multicultural events and celebrations, geocaching for seniors, movies for grownups, share your love and talents campaign, publish (print and online) a directory of places people with mobility challenges can experience nature

Respect & Inclusion

Concept: Programs that promote ethnic and cultural diversity, as well as multigenerational interaction and dialogue.

Community members expressed a desire for: **Community Senior Activity Center** open to all with regular schedule of activities; flowers for homebound residents, like meals on wheels; safe and accessible public spaces for walking and gathering; multi-cultural events and celebrations like Festival of Holi in March; Social events; Age- Friendly Days; work across community groups; support prison-release programs to support re-entry, voting, healthy life-practices, housing. **OFFICE OF AGING**

Communication and Information

Concept: Access to communications technology and other resources so older residents can connect with their community, friends and family.

Community members expressed a desire for: Juneau Seniors Facebook Page; semi-annual senior expo; online senior events calendar, also posted around town; fliers for concerts and other events posted at senior living facilities; share information on seniors’ contributions to the community; Ag

AGE-FRIENDLY COMMUNITY PLANNING – JUNEAU ALASKA

Friendly Juneau webpage; write articles for Senior Voice and AARP publications. Emergency Directory.

2025 Community members expressed interest in: Facebook posts for seniors, semi-annual expo highlighting senior oriented information, monthly fliers for concerts, plays, other events (online calendar)

Community and Health Services

Concept: Access to home based care services, health clinics and programs that promote wellness and active aging.

Community members expressed a desire for: Community Senior Activity Center; **group workshops and information sessions**; geriatric care (encourage Bartlett to recruit a gerontologist, rheumatologist, cardiologist, gastroenterologist, and neurologist), Meals-on Wheels and congregate meals at Senior activity centers, encourage CAN and nursing programs at UAS, Friends of Seniors - help with small projects like changing smoke alarm batteries, etc., support Bartlett Home Health and Hospice, develop a directory of Medicare/Medicaid providers, promote wellness talks and activities (libraries, Bartlett, and senior housing).

2025 Community members expressed interest in: **group informational sessions and workshops on health-related topics**; flowers for the homebound (like Meals on Wheels).

Work and Civic Engagement

Concept: Paid work and volunteer activities for older residents and opportunities to engage in formulation of policies relevant to their lives.

2023 Community members expressed a desire for: **Community Senior Activity Center**, financial assistance (car maintenance, banking, bill paying, household chores, senior-helper/Friends of Seniors Program), share information on the Dept. of Labor “Return to Work Programs”, directory of volunteer opportunities.

AGE FRIENDLY COMMUNITY PLANNING – JUNEAU ALASKA

AGE AND ABILITY FRIENDLY PRIORITY AREA ACTION ITEMS

Housing, Transportation, Outdoor Spaces and Buildings, Respect and Social Inclusion

Housing Statement

[Click here to enter Domain Name Action Plan Matrix](#)

Vision for this Domain: [Click here to enter vision.](#)

Objectives/Actions	By Whom	By When	Resources and Support		Potential barriers or resistance	Outputs	Outcomes - Impact	
			Available	Needed			Short- and Medium-Term	Long-Term
Click here to enter text.	Click here to enter text.	Click here to enter text.	Click here to enter text.	Click here to enter text.	Click here to enter text.	Click here to enter text.	Click here to enter text.	Click here to enter text.
Click here to enter text.	Click here to enter text.	Click here to enter text.	Click here to enter text.	Click here to enter text.	Click here to enter text.	Click here to enter text.	Click here to enter text.	Click here to enter text.
Click here to enter text.	Click here to enter text.	Click here to enter text.	Click here to enter text.	Click here to enter text.	Click here to enter text.	Click here to enter text.	Click here to enter text.	Click here to enter text.
Click here to enter text.	Click here to enter text.	Click here to enter text.	Click here to enter text.	Click here to enter text.	Click here to enter text.	Click here to enter text.	Click here to enter text.	Click here to enter text.
Click here to enter text.	Click here to enter text.	Click here to enter text.	Click here to enter text.	Click here to enter text.	Click here to enter text.	Click here to enter text.	Click here to enter text.	Click here to enter text.
Click here to enter text.	Click here to enter text.	Click here to enter text.	Click here to enter text.	Click here to enter text.	Click here to enter text.	Click here to enter text.	Click here to enter text.	Click here to enter text.

AARP Network of Age-Friendly States and Communities

AGE FRIENDLY COMMUNITY PARTNERS

1. **Bartlett Regional Hospital**
2. **Senior Services Southeast**
3. **SE Regional Health Consortium**

AGE FRIENDLY PLANNING TEAM MEMBERS

Linda statement

Linda Kruger,
Juneau Community Action Team Leader
Jane Lindsey
AARP Community Action Team
Deborah Craig,
Chair Juneau Commission on Aging
Barbara Murray,
Juneau Commission on Aging

DATA SOURCES

Age-Friendly Juneau Data Sources (4/10/25)

2019-2021 Community Needs Assessment Six Month Update, Rural Alaska Community Action Program, Inc.

Juneau Assembly Goals 2025 (Approved 2/3/2025)

Alaska's Community Capacity Review: 2019 Statewide Public Health System Assessment, Alaska Department of Health & Social Services

Juneau Surveys and Listening Sessions

2020 Juneau Senior Needs Survey (include link in Age-Friendly Plan)

2023 Listening Sessions: 5/9 Downtown Library; 5/16 Valley Library; 5/23 Douglas Library

Participants and other residents also were encouraged to submit written comments.

2/25/25 Juneau AARP Reception Listening Session

Other References

Making our Roads Safer, US Department of Transportation, October 2012

APPENDIX

Buildings and Outdoor Spaces Action Plan Matrix

Vision for this Domain: Create availability for those over 50 to engage socially, physically and to obtain information.

Objectives/Actions	By Whom	By When	Resources and Support		Potential barriers or resistance	Outputs	Outcomes - Impact	
			Available	Needed			Short- and Medium-Term	Long-Term
Promote development of a Senior Community Center	CBJ, JCOA, AARP and interested community orgs	FY 2026	CBJ Marie Drake Complex via Parks and Recs	Support to use space – Juneau Empire, KTOO	Support and funding	A Senior Center open for use year round.	Determine availability of space for 2026	Space open and usable
Click here to enter text.	Click here to enter text.	Click here to enter text.	Click here to enter text.	Click here to enter text.	Click here to enter text.	Click here to enter text.	Click here to enter text.	Click here to enter text.
Click here to enter text.	Click here to enter text.	Click here to enter text.	Click here to enter text.	Click here to enter text.	Click here to enter text.	Click here to enter text.	Click here to enter text.	Click here to enter text.
Click here to enter text.	Click here to enter text.	Click here to enter text.	Click here to enter text.	Click here to enter text.	Click here to enter text.	Click here to enter text.	Click here to enter text.	Click here to enter text.
Click here to enter text.	Click here to enter text.	Click here to enter text.	Click here to enter text.	Click here to enter text.	Click here to enter text.	Click here to enter text.	Click here to enter text.	Click here to enter text.
Click here to enter text.	Click here to enter text.	Click here to enter text.	Click here to enter text.	Click here to enter text.	Click here to enter text.	Click here to enter text.	Click here to enter text.	Click here to enter text.

Click here to enter text.	Click here to enter text.	Click here to enter text.	Click here to enter text.	Click here to enter text.	Click here to enter text.	Click here to enter text.	Click here to enter text.	Section C, Item 1. to enter text.
Click here to enter text.	Click here to enter text.	Click here to enter text.	Click here to enter text.	Click here to enter text.	Click here to enter text.	Click here to enter text.	Click here to enter text.	Click here to enter text.
Click here to enter text.	Click here to enter text.	Click here to enter text.	Click here to enter text.	Click here to enter text.	Click here to enter text.	Click here to enter text.	Click here to enter text.	Click here to enter text.
Click here to enter text.	Click here to enter text.	Click here to enter text.	Click here to enter text.	Click here to enter text.	Click here to enter text.	Click here to enter text.	Click here to enter text.	Click here to enter text.
Click here to enter text.	Click here to enter text.	Click here to enter text.	Click here to enter text.	Click here to enter text.	Click here to enter text.	Click here to enter text.	Click here to enter text.	Click here to enter text.

Who is responsible for maintaining and updating information: Click here to enter text.

Frequency of Meetings: Click here to enter text.

Social Participation and Inclusion Action Plan Matrix

Vision for this Domain: Improve Opportunities for and Actual Community Engagement

Objectives/Actions	By Whom	By When	Resources and Support		Potential barriers or resistance	Outputs	Outcomes - Impact	
			Available	Needed			Short- and Medium-Term	Long-Term
Increase opportunities for senior engagement and awareness of opportunities	Juneau Commission on Aging and AARP Juneau	2027	Juneau Public Libraries, Juneau Parks and Recreation, UAS, Community Schools, Cooperative Extension,	Community Support Creative ideas	Creativity, facilities	Age-Friendly activities	Increased information about senior activities and new offerings	Increased participation in senior activities
Host more senior events - music events, art classes, senior movies, book clubs, walks, arts and crafts classes	CBJ Parks and Recreation, UAS, Community Schools, Cooperative Extension, Juneau Public Libraries, Bartlett Hospital,	2025-ongoing	Existing programs, New Programs, Community Members, AARP, UAS/UAF	Community Support and engagement	Competition for time, facilities	Reduction in mortality related to social determinants of health; reduction in isolation	Focused efforts to improve social determinants of health and provide more opportunities for seniors	Reduction in preventable/avoidable mortality and isolation

Coordinate efforts to establish a Community Senior Activity Center	Juneau Commission on Aging, AARP Juneau, CBJ, others	2025-ongoing	Enthusiastic support	A physical space and funding	Funding, lack of available space	A location to have movie nights, daytime events, social lunches, music events, classes, physical activities like yoga and tai chi,	Increased social engagement, more active seniors	Improved mental and physical health
Reach out to Tlingit and Haida, the Filipino Community and others	Juneau Commission on Aging and AARP Juneau	2025-ongoing	Interest	Interest	Lack of interest, already overcommitted	More inclusive events	More diverse offerings and participants	Greater variety of programming
Partner with senior living facilities for events and classes	Riverview Senior Living, Juneau Pioneer Home, others	2025-ongoing	Interest in working together	Time and attention, ideas	Funding, ideas for collaboration	More offerings reaching more people in varied locations	Increased engagement	Increased services and participation
Establish a Senior Legacy Project	UAS, AARP, JCOA, others	2025-ongoing	Framework and interest	Time, coordination and interest	Fear of the unknown or of working with others	Increased understanding across generations	Increased socializing	Improved mental health, reduced isolation

Click here to enter text.	Click here to enter text.	Click here to enter text.	Click here to enter text.	Click here to enter text.	Click here to enter text.	Click here to enter text.	Click here to enter text.	<div>Section C, Item 1.</div> enter text.
Click here to enter text.	Click here to enter text.	Click here to enter text.	Click here to enter text.	Click here to enter text.	Click here to enter text.	Click here to enter text.	Click here to enter text.	Click here to enter text.
Click here to enter text.	Click here to enter text.	Click here to enter text.	Click here to enter text.	Click here to enter text.	Click here to enter text.	Click here to enter text.	Click here to enter text.	Click here to enter text.
Click here to enter text.	Click here to enter text.	Click here to enter text.	Click here to enter text.	Click here to enter text.	Click here to enter text.	Click here to enter text.	Click here to enter text.	Click here to enter text.

Who is responsible for maintaining and updating information: Click here to enter text.

Frequency of Meetings: Click here to enter text.

Communication and Information Action Plan Matrix

Vision for this Domain: Improve Communication and Information for and about those over 50 - *“Do the best you can until you know better. Then when you know better, do better.”* -Maya Angelou

Objectives/Actions	By Whom	By When	Resources and Support		Potential barriers or resistance	Outputs	Outcomes - Impact	
			Available	Needed			Short- and Medium-Term	Long-Term
Improve communication of senior events and services	Juneau Commission on Aging and AARP Juneau	2025-ongoing	Juneau Empire, KTOO and other radio stations, postering	Community Support	Time to administer efforts	Distribution of information on a regular basis	Improved access to senior information	Improved Communication of information important to Seniors leading to increased engagement
Expand partnerships with organizations and businesses serving seniors	JCOA, AARP Juneau	2025-ongoing	Existing groups	Collaboration plans	Competition for time, lack of understanding of benefits	Focused efforts to improve awareness of information important to seniors	Improved access to senior information and understanding of senior needs	Improved Communication of information important to Seniors and understanding of senior needs

Expand understanding of what seniors add to the community	JCOA and AARP Juneau	2025-ongoing	AARP and other resources	Attention to getting materials out into the community	Competition for time	Materials to describe benefits seniors contribute	Increased understanding of the benefits seniors bring to the community	<div>Section C, Item 1.</div> appreciation of the benefits seniors bring to the community
Provide classes for seniors	UAS, Bartlett Hospital, Juneau Parks and Rec, Juneau Public Libraries, others	2025-ongoing	AARP classes, Senior Planet, UAS curriculum, Cooperative Extension	Understanding of what information is needed/helpful	Time, commitment	Increased understanding, actionable information	Click here to enter text.	Click here to enter text.
Click here to enter text.	Click here to enter text.	Click here to enter text.	Click here to enter text.	Click here to enter text.	Click here to enter text.	Click here to enter text.	Click here to enter text.	Click here to enter text.
Click here to enter text.	Click here to enter text.	Click here to enter text.	Click here to enter text.	Click here to enter text.	Click here to enter text.	Click here to enter text.	Click here to enter text.	Click here to enter text.
Click here to enter text.	Click here to enter text.	Click here to enter text.	Click here to enter text.	Click here to enter text.	Click here to enter text.	Click here to enter text.	Click here to enter text.	Click here to enter text.

Click here to enter text.	Click here to enter text.	Click here to enter text.	Click here to enter text.	Click here to enter text.	Click here to enter text.	Click here to enter text.	Click here to enter text.	<div>Section C, Item 1.</div> enter text.
Click here to enter text.	Click here to enter text.	Click here to enter text.	Click here to enter text.	Click here to enter text.	Click here to enter text.	Click here to enter text.	Click here to enter text.	Click here to enter text.
Click here to enter text.	Click here to enter text.	Click here to enter text.	Click here to enter text.	Click here to enter text.	Click here to enter text.	Click here to enter text.	Click here to enter text.	Click here to enter text.

Who is responsible for maintaining and updating information: Click here to enter text.

Frequency of Meetings: Click here to enter text.

Transportation Action Plan Matrix

Vision for this Domain: Promote safe and affordable transportation

Objectives/Actions	By Whom	By When	Resources and Support		Potential barriers or resistance	Outputs	Outcomes - Impact	
			Available	Needed			Short- and Medium-Term	Long-Term
Encourage public transportation use	City and Borough of Juneau	ongoing	AARP, federal and state funding	Publicity of available options	Reluctance or lack of knowledge	Increased use of services	More seniors ride buses	Better services and increased ridership
Additional bus stops and improved facilities	City and Borough	ongoing	Federal, state and local funding	Community engagement	Lack of understanding of what is needed	Improved service	Weatherproof bus stop shelters	Routes convenient to services for seniors
Vintage Park Trail Improvements	Southeast Alaska Land Trust, Trail Mix, local businesses and residents	2026	Community support, willing partners	Funding for purchase of land and trail renovation and development	Funding, permitting, river course changing	2 miles of improved trail	Transfer of land to SEALT and work with Trail Mix to improve the trail	Loop trail is used by all-ages to access local facilities and for recreation
Improve sidewalks, crossings, parking, etc at Vintage Park	Alaska Department of Transportation and CBJ	2025-26	Funding is available, planning is underway	Community Support	River flooding, changing course	Improved traffic flow, parking, pedestrian crossings and sidewalks	Increased, safe pedestrian use of area	Increased pedestrian use of the area and safety for all users

Improved crossings throughout the City and Borough	CBJ and DOT-PF	ongoing	DOT and CBJ have highway/road funds for improvements	Community support to help identify needs	Continued funding	Safe streets	Safe pedestrian and car access	Section C, Item 1. pedestrian and car access
Click here to enter text.	Click here to enter text.	Click here to enter text.	Click here to enter text.	Click here to enter text.	Click here to enter text.	Click here to enter text.	Click here to enter text.	Click here to enter text.
Click here to enter text.	Click here to enter text.	Click here to enter text.	Click here to enter text.	Click here to enter text.	Click here to enter text.	Click here to enter text.	Click here to enter text.	Click here to enter text.
Click here to enter text.	Click here to enter text.	Click here to enter text.	Click here to enter text.	Click here to enter text.	Click here to enter text.	Click here to enter text.	Click here to enter text.	Click here to enter text.
Click here to enter text.	Click here to enter text.	Click here to enter text.	Click here to enter text.	Click here to enter text.	Click here to enter text.	Click here to enter text.	Click here to enter text.	Click here to enter text.
Click here to enter text.	Click here to enter text.	Click here to enter text.	Click here to enter text.	Click here to enter text.	Click here to enter text.	Click here to enter text.	Click here to enter text.	Click here to enter text.

Who is responsible for maintaining and updating information: Click here to enter text.

Frequency of Meetings: Click here to enter text.

Health Services and Community Supports Action Plan Matrix

Vision for this Domain: Improve Community Health Opportunities for those over 50

Objectives/Actions	By Whom	By When	Resources and Support		Potential barriers or resistance	Outputs	Outcomes - Impact	
			Available	Needed			Short- and Medium-Term	Long-Term
Work toward Age-Friendly status for Bartlett Hospital	Rhonda Ward	2027	Bartlett Hospital Board and Staff	Community Support	Time to process	Age-Friendly recognition and implementation of processes	Improved senior services	Improved Senior Services
Reduce preventable/avoidable mortality	Hospital Staff	2028	Bartlett Hospital Staff and Community Members	Community Support and engagement	Competition for time	Reduction in mortality related to social determinants of health and lack of community preparedness	Focused efforts to improve awareness of and actions toward improving social determinants of health and community preparedness	Reduction in preventable/a voidable mortality
Provide resources and classes through partnerships	Bartlett Hospital Staff, UAS, AARP, others	2025-ongoing	Bartlett Hospital Staff, AARP Volunteers,	Community support and participation	Lack of imagination for what could be	Educational programs	Improved knowledge and individual and community action	Improved community health and well-being

Encourage recreational and social programs and outdoor opportunities	Bartlett Hospital, Juneau Parks and Recreation, AARP, UAS, others	2025-ongoing	Staff at Bartlett Hospital, Juneau Parks and Recreation, AARP, UAS, others	Community engagement	Shortage of creative ideas and community engagement	Increased cultural and recreational opportunities and programs	Increased participation by older adults	Section C, Item 1. health and longevity
Identify community health risks	Bartlett Hospital, UAS, AARP, CBJ,	2025-ongoing	Bartlett Hospital, AARP, Alaska Public Health, Community Groups	Community Engagement	Lack of understanding /knowledge	Listing of health risks	Efforts to address risks	Reduced Risk
Fall prevention/Better Bones and Balance Classes	UAF, community instructors	2025-ongoing	UAF Cooperative Extension, Juneau Parks and Recreation, community instructors	Community Engagement	Lack of knowledge, interest	Community classes	Reduced injuries from falls	Reduced injuries from falls
Click here to enter text.	Click here to enter text.	Click here to enter text.	Click here to enter text.	Click here to enter text.	Click here to enter text.	Click here to enter text.	Click here to enter text.	Click here to enter text.
Click here to enter text.	Click here to enter text.	Click here to enter text.	Click here to enter text.	Click here to enter text.	Click here to enter text.	Click here to enter text.	Click here to enter text.	Click here to enter text.

Click here to enter text.	Click here to enter text.	Click here to enter text.	Click here to enter text.	Click here to enter text.	Click here to enter text.	Click here to enter text.	Click here to enter text.	Click here to enter text.
Click here to enter text.	Click here to enter text.	Click here to enter text.	Click here to enter text.	Click here to enter text.	Click here to enter text.	Click here to enter text.	Click here to enter text.	Click here to enter text.

Who is responsible for maintaining and updating information: Click here to enter text.

Frequency of Meetings: Click here to enter text.