



# Metropolitan Development Commission Regional Center Hearing Examiner (June 27, 2024) Meeting Agenda

## Meeting Details

Notice is hereby given that the Regional Center Hearing Examiner of the Metropolitan Development Commission of Marion County, IN, will hold public hearings on:

**Date:** Thursday, June 27, 2024

**Time:** 10:00 AM

**Location:** Room 2001, 20th Floor, City-County Building, 200 E. Washington Street

Upon the following Regional Center petitions as authorized by Chapter 735, Article VI of the Revised Code of the Consolidated City and County, as amended by General Ordinance 56, 2008.

## Business:

### Special Requests

None.

## PETITIONS REQUESTING TO BE CONTINUED:

### Petitions for Public Hearing

#### PETITIONS FOR PUBLIC HEARING (Continued Petitions):

- 1. 2024-REG-016B | 501 Indiana Avenue**  
Center Township, CD #12, Zoned CBD-2 (RC)  
Indiana Avenue Partners, LLC, by Chris Mulloy

Regional Center Approval to provide for construction of a 12-story mixed-use development, consisting of 263 dwelling units, 323 parking spaces within a parking garage, and approximately 35,475 square feet of amenity space, office space, and retail space.

#### PETITIONS FOR PUBLIC HEARING (New Petitions):

- 2. 2024-REG-028 | 639 South Delaware Street**  
Center Township, CD #18, Zoned I-3 (RC)  
Eli Lilly and Company, by Andi M. Metzel

Regional Center Approval to provide for a 775-person, two-story conference center, within an existing corporate campus.

## Additional Business:

\*\*The addresses of the proposals listed above are approximate and should be confirmed with the Division of Planning. Copies of the proposals are available for examination prior to the hearing by emailing [planneroncall@indy.gov](mailto:planneroncall@indy.gov). Written

objections to a proposal are encouraged to be filed via email at [planneroncall@indy.gov](mailto:planneroncall@indy.gov) before the hearing and such objections will be considered. At the hearing, all interested persons will be given an opportunity to be heard in reference to the matters contained in said proposals. The hearing may be continued from time to time as may be found necessary. For accommodations needed by persons with disabilities planning to attend this public hearing, please call the Office of Disability Affairs at (317) 327-7093, at least 48 hours prior to the meeting. Department of Metropolitan Development - Current Planning Division.

## STAFF REPORT

### REGIONAL CENTER HEARING EXAMINER - HIGH IMPACT CASE

<b>Case Number</b>	2024-REG-016B
<b>Address (approx.)</b>	501 Indiana Avenue
<b>Location</b>	Center Township, Council District # 12
<b>Petitioner</b>	Indiana Avenue Partners, LLC., by Chris Mulloy
<b>Zoning</b>	CBD-2 (RC)
<b>Request</b>	Regional Center Approval to provide for: Construction of a 12-story mixed-use development, consisting of 263 dwelling units, 323 parking spaces within a parking garage, and approximately 35,475 square feet of amenity space, office space, and retail space.

#### GENERAL INFORMATION

<b>Existing Zoning</b>	CBD-2 (RC)		
<b>Existing Land Use</b>	Office building (vacant) and surface parking lot		
<b>Urban Design Guidelines District Typology</b>	Village Mixed-use		
<b>Regional Center Plan</b>	Medium-density mixed-use development		
<b>Surrounding Context</b>	<b>Zoning</b>	<b>Land Use</b>	
	North: CBD-S (RC)	Multi-family dwellings	
	South: CBD-2 (RC)	Mixed-uses	
	East: CBD-2 (RC)	Canal / office / multi-family dwellings	
	West: CBD-2 (RC)	Mixed-uses	
<b>Thoroughfare Plan</b>			
	Indiana Avenue	Primary arterial	78-foot existing and proposed
	Michigan Street	Primary arterial	78-foot existing and proposed
<b>Site Plan – Submittal Dates</b>	File-dated March 7, 2024; revised March 28, 2024; revised April 18, 2024; revised April 24, 2024; revised June 13, 2024		
<b>Elevations– Submittal Dates</b>	File-dated March 7, 2024; revised March 28, 2024; revised April 18, 2024; revised May 16, 2024; revised June 13, 2024		
<b>Meeting Date</b>	April 11, 2024 (Continued); May 9, 2024 (Part A – approved, Part B - Continued); May 23, 2024 (Part B – Continued); June 13, 2024 (Part B – Continued); June 27, 2024 (Part B)		

#### DETAILED SUMMARY OF REQUEST

##### History:

On May, 9, 2024, the Regional Center Hearing Examiner approved Part A of the request, which would demolish the existing office structure. The Metropolitan Development Commission gave final approval for the demolition on June 5, 2024. Since May 9, 2024, staff has met with the petitioner twice to discuss Part B of the request and received updated plans on two occasions in response to those discussions.

##### Request:

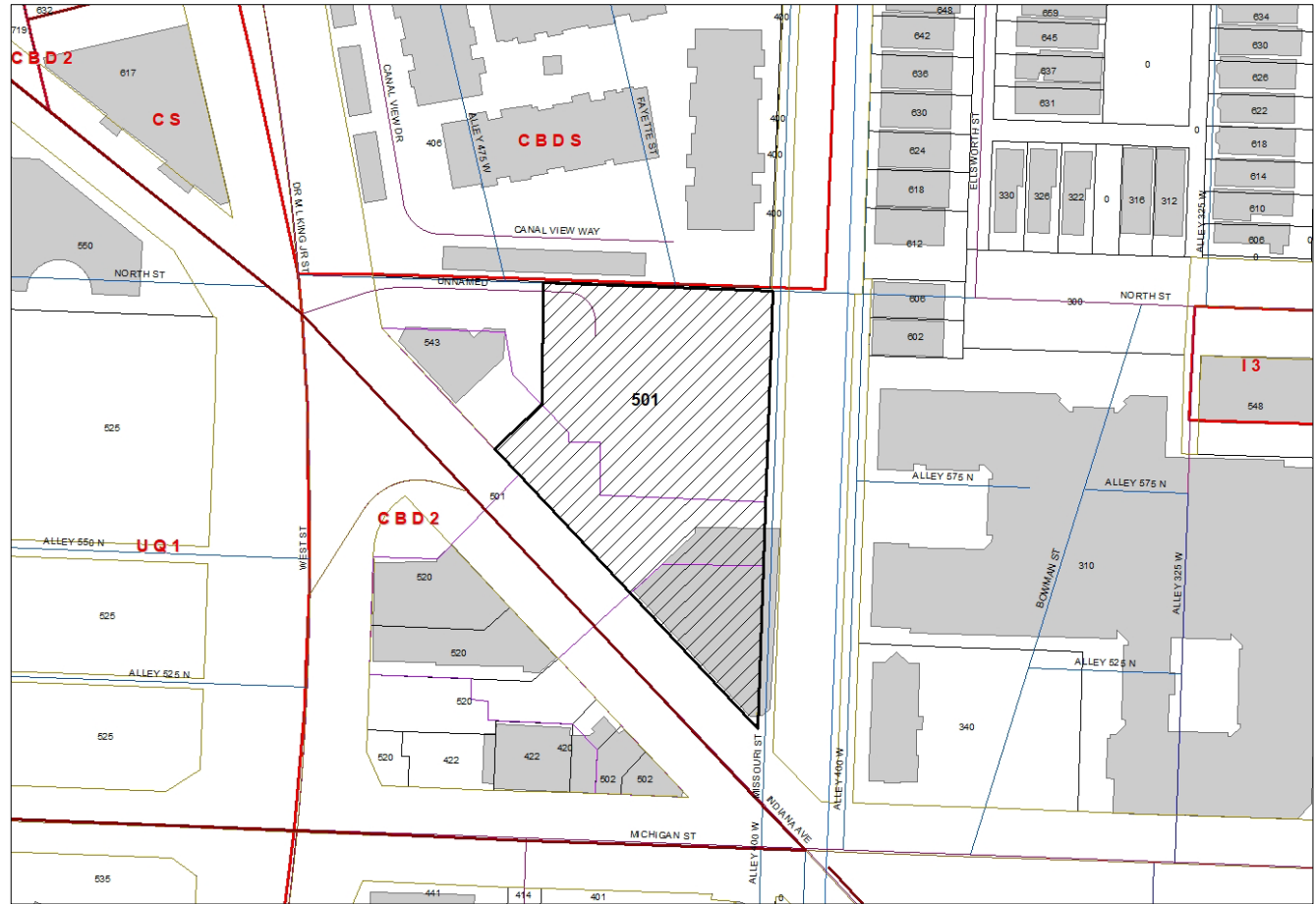
Part B would construct a 12-story, mixed-use building with frontage on Indiana Avenue and the Central Canal. Three retail spaces would be provided at street level along Indiana Avenue, with an office for the apartments. Garage access would be gained at the northwest corner of the building, along Indiana Avenue.

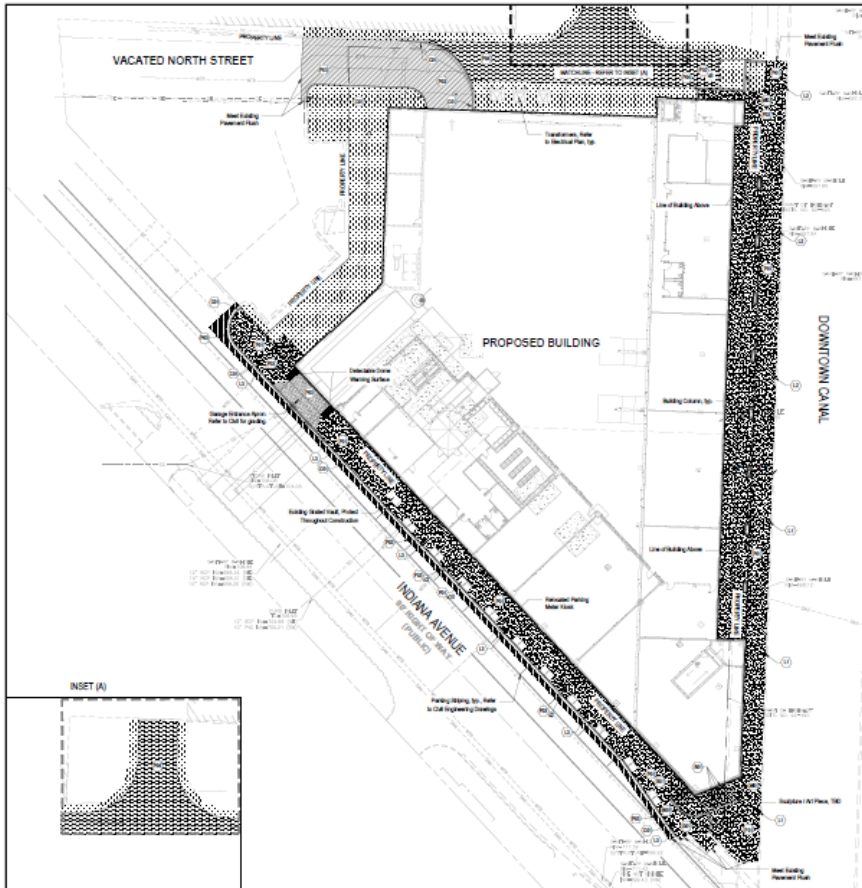
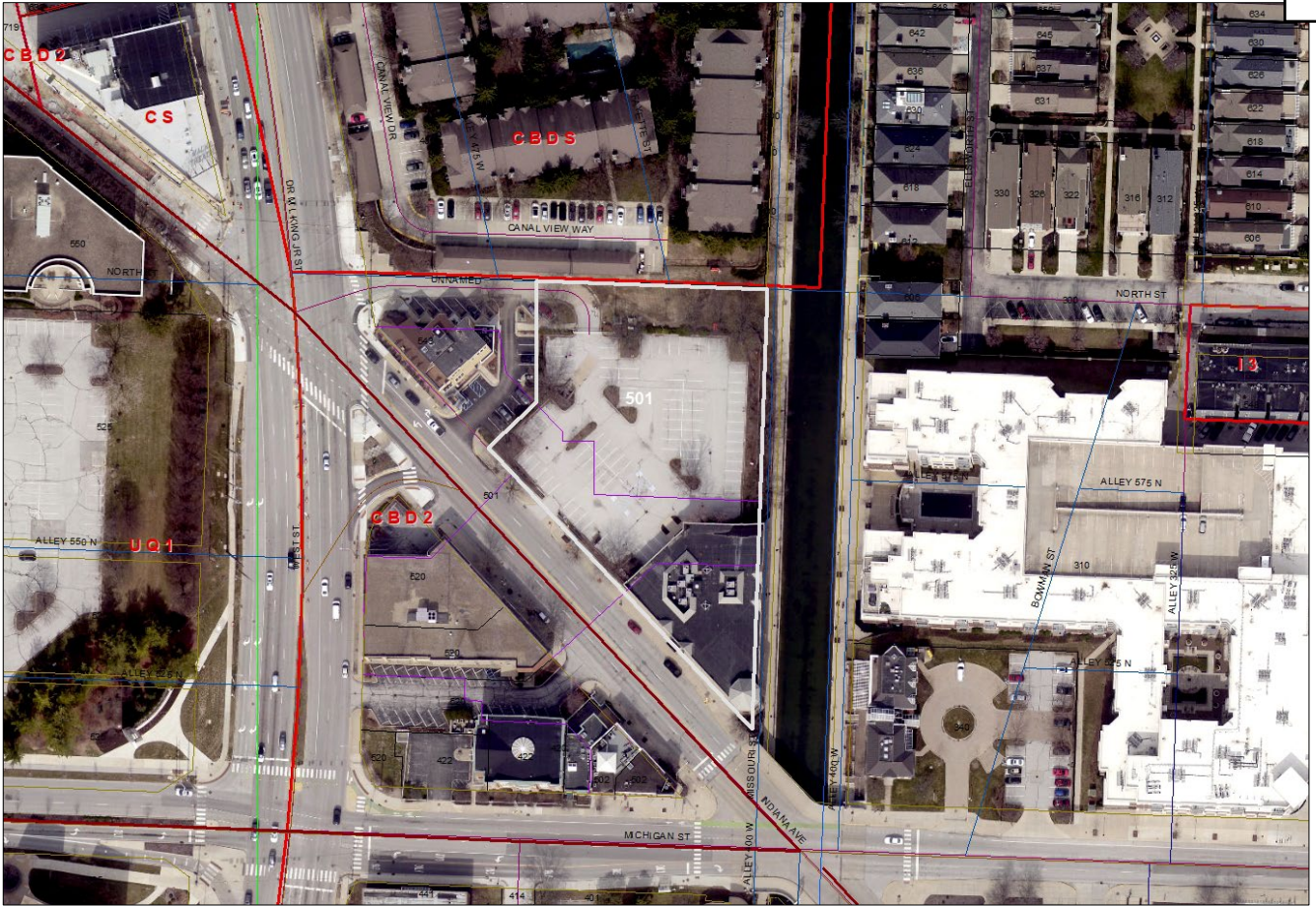
The garage would be four stories, from the street level through the fifth floor. Additional office, amenity, or commercial space would be on the second level above the street. The canal level floor plan is unmarked as to the type of uses that would be within those spaces. This oversight must be clarified before the hearing. Apartment units would be on floors five through 12.

Along the canal would be a multi-story projecting structure that would provide cover for pedestrians along the canal a full 12 feet of walkable space beneath the structure, with at least 11 feet of walkable space that would remain open for pedestrians from the structure support columns to the canal edge.

Building materials include thin brick, masonry veneer, faux limestone (StoCast) accent trim, vision glass, steel or aluminum canopies, and metal awnings.

Marlee Brabin, AIA, City Architect, has submitted written comments to the file, which are below.





NO.	DESCRIPTION	DATE	BY	CHECKED
1	PRELIMINARY	10/20/18	J. H. [unreadable]	[unreadable]
2	REVISED	11/15/18	J. H. [unreadable]	[unreadable]
3	REVISED	12/10/18	J. H. [unreadable]	[unreadable]
4	REVISED	1/15/19	J. H. [unreadable]	[unreadable]
5	REVISED	2/10/19	J. H. [unreadable]	[unreadable]
6	REVISED	3/10/19	J. H. [unreadable]	[unreadable]
7	REVISED	4/10/19	J. H. [unreadable]	[unreadable]
8	REVISED	5/10/19	J. H. [unreadable]	[unreadable]
9	REVISED	6/10/19	J. H. [unreadable]	[unreadable]
10	REVISED	7/10/19	J. H. [unreadable]	[unreadable]
11	REVISED	8/10/19	J. H. [unreadable]	[unreadable]
12	REVISED	9/10/19	J. H. [unreadable]	[unreadable]
13	REVISED	10/10/19	J. H. [unreadable]	[unreadable]
14	REVISED	11/10/19	J. H. [unreadable]	[unreadable]
15	REVISED	12/10/19	J. H. [unreadable]	[unreadable]
16	REVISED	1/10/20	J. H. [unreadable]	[unreadable]
17	REVISED	2/10/20	J. H. [unreadable]	[unreadable]
18	REVISED	3/10/20	J. H. [unreadable]	[unreadable]
19	REVISED	4/10/20	J. H. [unreadable]	[unreadable]
20	REVISED	5/10/20	J. H. [unreadable]	[unreadable]
21	REVISED	6/10/20	J. H. [unreadable]	[unreadable]
22	REVISED	7/10/20	J. H. [unreadable]	[unreadable]
23	REVISED	8/10/20	J. H. [unreadable]	[unreadable]
24	REVISED	9/10/20	J. H. [unreadable]	[unreadable]
25	REVISED	10/10/20	J. H. [unreadable]	[unreadable]
26	REVISED	11/10/20	J. H. [unreadable]	[unreadable]
27	REVISED	12/10/20	J. H. [unreadable]	[unreadable]
28	REVISED	1/10/21	J. H. [unreadable]	[unreadable]
29	REVISED	2/10/21	J. H. [unreadable]	[unreadable]
30	REVISED	3/10/21	J. H. [unreadable]	[unreadable]
31	REVISED	4/10/21	J. H. [unreadable]	[unreadable]
32	REVISED	5/10/21	J. H. [unreadable]	[unreadable]
33	REVISED	6/10/21	J. H. [unreadable]	[unreadable]
34	REVISED	7/10/21	J. H. [unreadable]	[unreadable]
35	REVISED	8/10/21	J. H. [unreadable]	[unreadable]
36	REVISED	9/10/21	J. H. [unreadable]	[unreadable]
37	REVISED	10/10/21	J. H. [unreadable]	[unreadable]
38	REVISED	11/10/21	J. H. [unreadable]	[unreadable]
39	REVISED	12/10/21	J. H. [unreadable]	[unreadable]
40	REVISED	1/10/22	J. H. [unreadable]	[unreadable]
41	REVISED	2/10/22	J. H. [unreadable]	[unreadable]
42	REVISED	3/10/22	J. H. [unreadable]	[unreadable]
43	REVISED	4/10/22	J. H. [unreadable]	[unreadable]
44	REVISED	5/10/22	J. H. [unreadable]	[unreadable]
45	REVISED	6/10/22	J. H. [unreadable]	[unreadable]
46	REVISED	7/10/22	J. H. [unreadable]	[unreadable]
47	REVISED	8/10/22	J. H. [unreadable]	[unreadable]
48	REVISED	9/10/22	J. H. [unreadable]	[unreadable]
49	REVISED	10/10/22	J. H. [unreadable]	[unreadable]
50	REVISED	11/10/22	J. H. [unreadable]	[unreadable]
51	REVISED	12/10/22	J. H. [unreadable]	[unreadable]
52	REVISED	1/10/23	J. H. [unreadable]	[unreadable]
53	REVISED	2/10/23	J. H. [unreadable]	[unreadable]
54	REVISED	3/10/23	J. H. [unreadable]	[unreadable]
55	REVISED	4/10/23	J. H. [unreadable]	[unreadable]
56	REVISED	5/10/23	J. H. [unreadable]	[unreadable]
57	REVISED	6/10/23	J. H. [unreadable]	[unreadable]
58	REVISED	7/10/23	J. H. [unreadable]	[unreadable]
59	REVISED	8/10/23	J. H. [unreadable]	[unreadable]
60	REVISED	9/10/23	J. H. [unreadable]	[unreadable]
61	REVISED	10/10/23	J. H. [unreadable]	[unreadable]
62	REVISED	11/10/23	J. H. [unreadable]	[unreadable]
63	REVISED	12/10/23	J. H. [unreadable]	[unreadable]
64	REVISED	1/10/24	J. H. [unreadable]	[unreadable]
65	REVISED	2/10/24	J. H. [unreadable]	[unreadable]
66	REVISED	3/10/24	J. H. [unreadable]	[unreadable]
67	REVISED	4/10/24	J. H. [unreadable]	[unreadable]
68	REVISED	5/10/24	J. H. [unreadable]	[unreadable]
69	REVISED	6/10/24	J. H. [unreadable]	[unreadable]
70	REVISED	7/10/24	J. H. [unreadable]	[unreadable]
71	REVISED	8/10/24	J. H. [unreadable]	[unreadable]
72	REVISED	9/10/24	J. H. [unreadable]	[unreadable]
73	REVISED	10/10/24	J. H. [unreadable]	[unreadable]
74	REVISED	11/10/24	J. H. [unreadable]	[unreadable]
75	REVISED	12/10/24	J. H. [unreadable]	[unreadable]
76	REVISED	1/10/25	J. H. [unreadable]	[unreadable]
77	REVISED	2/10/25	J. H. [unreadable]	[unreadable]
78	REVISED	3/10/25	J. H. [unreadable]	[unreadable]
79	REVISED	4/10/25	J. H. [unreadable]	[unreadable]
80	REVISED	5/10/25	J. H. [unreadable]	[unreadable]
81	REVISED	6/10/25	J. H. [unreadable]	[unreadable]
82	REVISED	7/10/25	J. H. [unreadable]	[unreadable]
83	REVISED	8/10/25	J. H. [unreadable]	[unreadable]
84	REVISED	9/10/25	J. H. [unreadable]	[unreadable]
85	REVISED	10/10/25	J. H. [unreadable]	[unreadable]
86	REVISED	11/10/25	J. H. [unreadable]	[unreadable]
87	REVISED	12/10/25	J. H. [unreadable]	[unreadable]
88	REVISED	1/10/26	J. H. [unreadable]	[unreadable]
89	REVISED	2/10/26	J. H. [unreadable]	[unreadable]
90	REVISED	3/10/26	J. H. [unreadable]	[unreadable]
91	REVISED	4/10/26	J. H. [unreadable]	[unreadable]
92	REVISED	5/10/26	J. H. [unreadable]	[unreadable]
93	REVISED	6/10/26	J. H. [unreadable]	[unreadable]
94	REVISED	7/10/26	J. H. [unreadable]	[unreadable]
95	REVISED	8/10/26	J. H. [unreadable]	[unreadable]
96	REVISED	9/10/26	J. H. [unreadable]	[unreadable]
97	REVISED	10/10/26	J. H. [unreadable]	[unreadable]
98	REVISED	11/10/26	J. H. [unreadable]	[unreadable]
99	REVISED	12/10/26	J. H. [unreadable]	[unreadable]
100	REVISED	1/10/27	J. H. [unreadable]	[unreadable]

**context**  
SITE PLAN

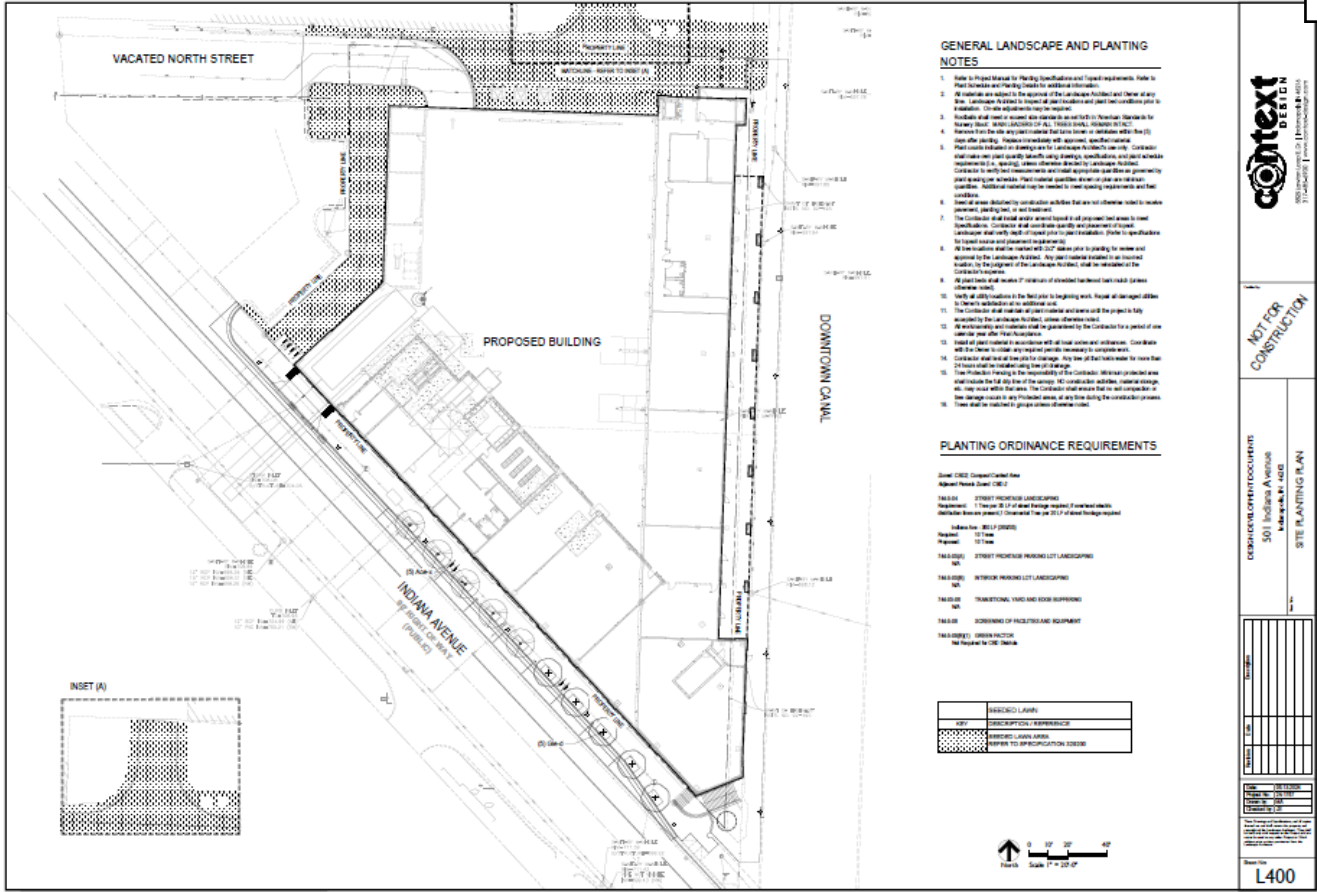
**NOT FOR CONSTRUCTION**

PROJECT: 501 Indiana Avenue  
 ADDRESS: 501 Indiana Avenue  
 CITY: INDIANAPOLIS, IN 46204

DATE: 12/10/2023

SCALE: 1" = 20'-0"

PROJECT NO: L100



- GENERAL LANDSCAPE AND PLANTING NOTES**
1. Refer to Project Manual for Planting Specifications and Typical Requirements. Refer to Plant Schedule and Planting Details for additional information.
  2. All materials are subject to the approval of the Landscape Architect and shall be substituted or replaced by an approved substitute in kind and color prior to construction.
  3. All materials shall be subject to the approval of the Landscape Architect and shall be substituted or replaced by an approved substitute in kind and color prior to construction.
  4. All materials shall be subject to the approval of the Landscape Architect and shall be substituted or replaced by an approved substitute in kind and color prior to construction.
  5. All materials shall be subject to the approval of the Landscape Architect and shall be substituted or replaced by an approved substitute in kind and color prior to construction.
  6. All materials shall be subject to the approval of the Landscape Architect and shall be substituted or replaced by an approved substitute in kind and color prior to construction.
  7. All materials shall be subject to the approval of the Landscape Architect and shall be substituted or replaced by an approved substitute in kind and color prior to construction.
  8. All materials shall be subject to the approval of the Landscape Architect and shall be substituted or replaced by an approved substitute in kind and color prior to construction.
  9. All materials shall be subject to the approval of the Landscape Architect and shall be substituted or replaced by an approved substitute in kind and color prior to construction.
  10. All materials shall be subject to the approval of the Landscape Architect and shall be substituted or replaced by an approved substitute in kind and color prior to construction.
  11. All materials shall be subject to the approval of the Landscape Architect and shall be substituted or replaced by an approved substitute in kind and color prior to construction.
  12. All materials shall be subject to the approval of the Landscape Architect and shall be substituted or replaced by an approved substitute in kind and color prior to construction.
  13. All materials shall be subject to the approval of the Landscape Architect and shall be substituted or replaced by an approved substitute in kind and color prior to construction.
  14. All materials shall be subject to the approval of the Landscape Architect and shall be substituted or replaced by an approved substitute in kind and color prior to construction.
  15. All materials shall be subject to the approval of the Landscape Architect and shall be substituted or replaced by an approved substitute in kind and color prior to construction.
  16. All materials shall be subject to the approval of the Landscape Architect and shall be substituted or replaced by an approved substitute in kind and color prior to construction.

- PLANTING ORDINANCE REQUIREMENTS**
- Zone: CSD Commercial Center  
 Special District: CSD-2  
 Section: STREET FRONT LANDSCAPING  
 Requirement: 1. Street front landscaping shall be provided for all lots fronting on the street.  
 Minimum height: 6 feet 0 inches. Maximum height: 10 feet 0 inches.  
 Minimum canopy coverage: 75% of the lot area.  
 Minimum spacing between plants: 6 feet.  
 Minimum spacing from sidewalk: 4 feet.
- Reference: CITY CODE  
 Chapter: 11  
 Article: 11-100  
 Section: 11-100-1
- SECTION: STREET FRONT PARKING LOT LANDSCAPING  
 Requirement: 1. Street front parking lot landscaping shall be provided for all parking lots fronting on the street.  
 Minimum height: 6 feet 0 inches. Maximum height: 10 feet 0 inches.  
 Minimum canopy coverage: 75% of the lot area.  
 Minimum spacing between plants: 6 feet.  
 Minimum spacing from sidewalk: 4 feet.
- SECTION: INTERIOR PARKING LOT LANDSCAPING  
 Requirement: 1. Interior parking lot landscaping shall be provided for all parking lots not fronting on the street.  
 Minimum height: 6 feet 0 inches. Maximum height: 10 feet 0 inches.  
 Minimum canopy coverage: 75% of the lot area.  
 Minimum spacing between plants: 6 feet.  
 Minimum spacing from sidewalk: 4 feet.
- SECTION: TRANSITIONAL YARD AND EXTERIOR SPACES  
 Requirement: 1. Transitional yard and exterior spaces shall be provided for all lots.  
 Minimum height: 6 feet 0 inches. Maximum height: 10 feet 0 inches.  
 Minimum canopy coverage: 75% of the lot area.  
 Minimum spacing between plants: 6 feet.  
 Minimum spacing from sidewalk: 4 feet.
- SECTION: SCREENING OF UTILITIES AND EQUIPMENT  
 Requirement: 1. Utilities and equipment shall be screened from public view.  
 Minimum height: 6 feet 0 inches. Maximum height: 10 feet 0 inches.  
 Minimum canopy coverage: 75% of the lot area.  
 Minimum spacing between plants: 6 feet.  
 Minimum spacing from sidewalk: 4 feet.
- SECTION: GREEN FACTOR  
 Requirement: 1. Green factor shall be calculated according to the City Code.  
 Minimum value: 1.00

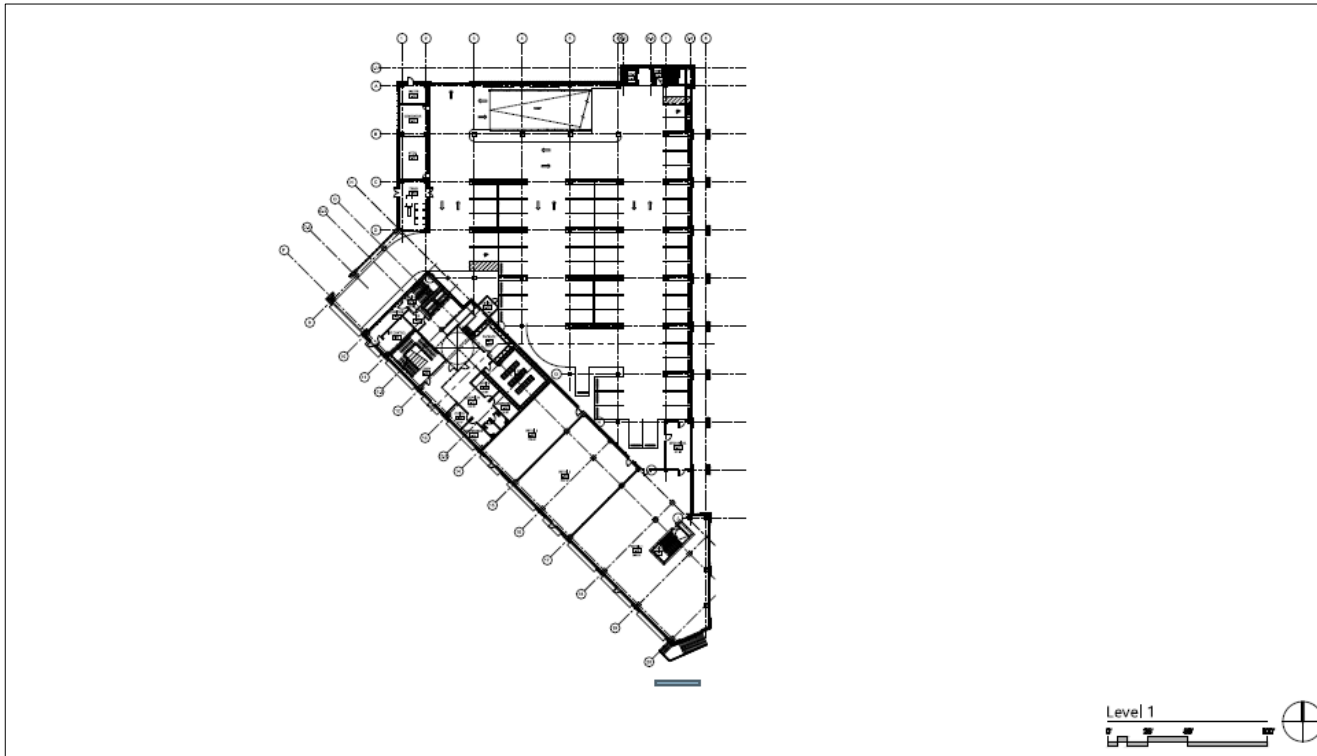
**context**  
 DESIGN  
 201 W. 12th Street, Indianapolis, IN 46204  
 (317) 343-1000  
 www.contextdesign.com

NOT FOR CONSTRUCTION

DEVELOPMENT DOCUMENTS  
 501 Indiana Avenue  
 Indianapolis, IN 46204  
 SITE PLANTING PLAN

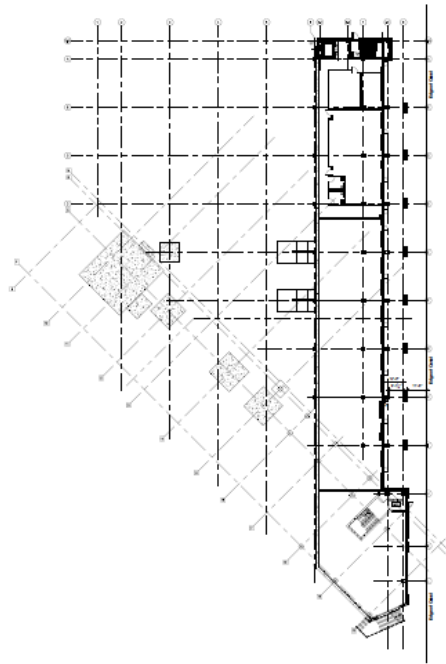
NO.	DESCRIPTION	DATE

Scale: 1/8" = 1'-0"  
 Date: 10/18/2024  
 Project: 24-00001-01  
 Drawing: 24-00001-01-SITE PLANTING PLAN  
 Revision: L400



CSO

501 Indiana Avenue  
 Indianapolis, IN | 13 June 2024

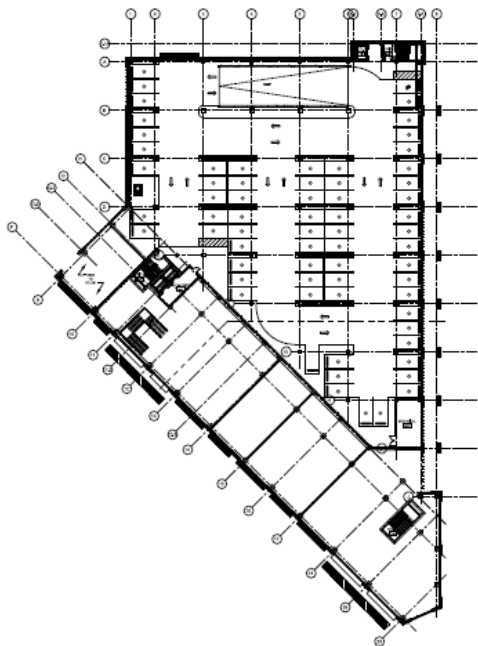


Sub-Level 1: Canal Level

501 Indiana Avenue  
Indianapolis, IN | 13 June 2024

19142

CSO

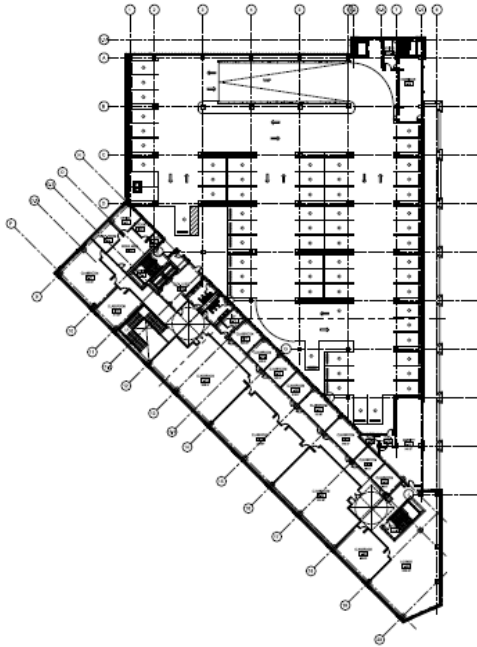


Level 2 (Grade+1)

501 Indiana Avenue  
Indianapolis, IN | 13 June 2024

19142

CSO

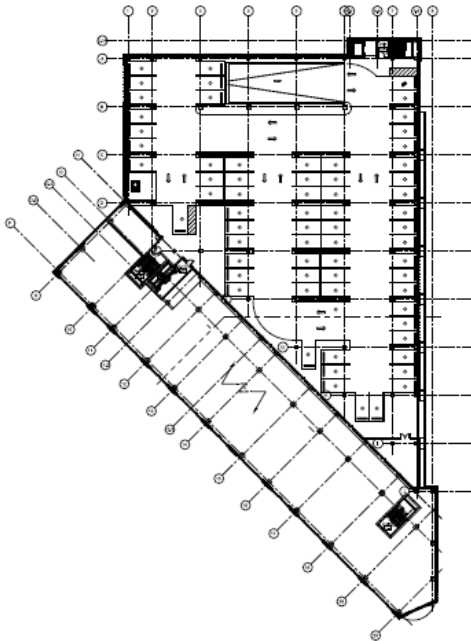


Level 3 (Grade +2)

CSO

501 Indiana Avenue  
Indianapolis, IN | 13 June 2024

19/42



Level 4 (Grade +3)

CSO

501 Indiana Avenue  
Indianapolis, IN | 13 June 2024

19/42





CSO

501 Indiana Avenue  
Indianapolis, IN | 13 June 2024

19142



CSO

501 Indiana Avenue  
Indianapolis, IN | 13 June 2024

19142

**NOTE: FACADE AT ANGLE-SEE WEST ELEVATION**

**MATERIALS KEY:**

- A Unit Stone Masonry Veneer  
Color: Buff
- B Thin Brick  
Color: Med. Red/Brown
- C SolidCast Limestone Accent Color  
Color: Buff
- D 1" Insulated Cladding (Wentel, In Warm Frame)  
Color: Black Mullions
- E Steel or Aluminum Canopy  
Color: Black
- F Standing Seam Metal Awning  
Canopy w/ Suspension Rods  
Color: Dark Graphite
- G Fiberglass Frame Window  
Color: Black Frame
- H Sconce Light
- I Aluminum Cladding  
Color: Black
- J Aluminum Cornice Profile w/ Detail Brackets  
Color: Black
- K Painted Channel Detail  
Color: Black
- L Decorative Screen:  
Perforated Aluminum Profile,  
Oversized
- M Louver  
Color: Black

**Key Plan: NTS**

**Southwest Elevation**  
0' 16' 32' 64'

**CSO** 501 Indiana Avenue  
Indianapolis, IN | 13 June 2024

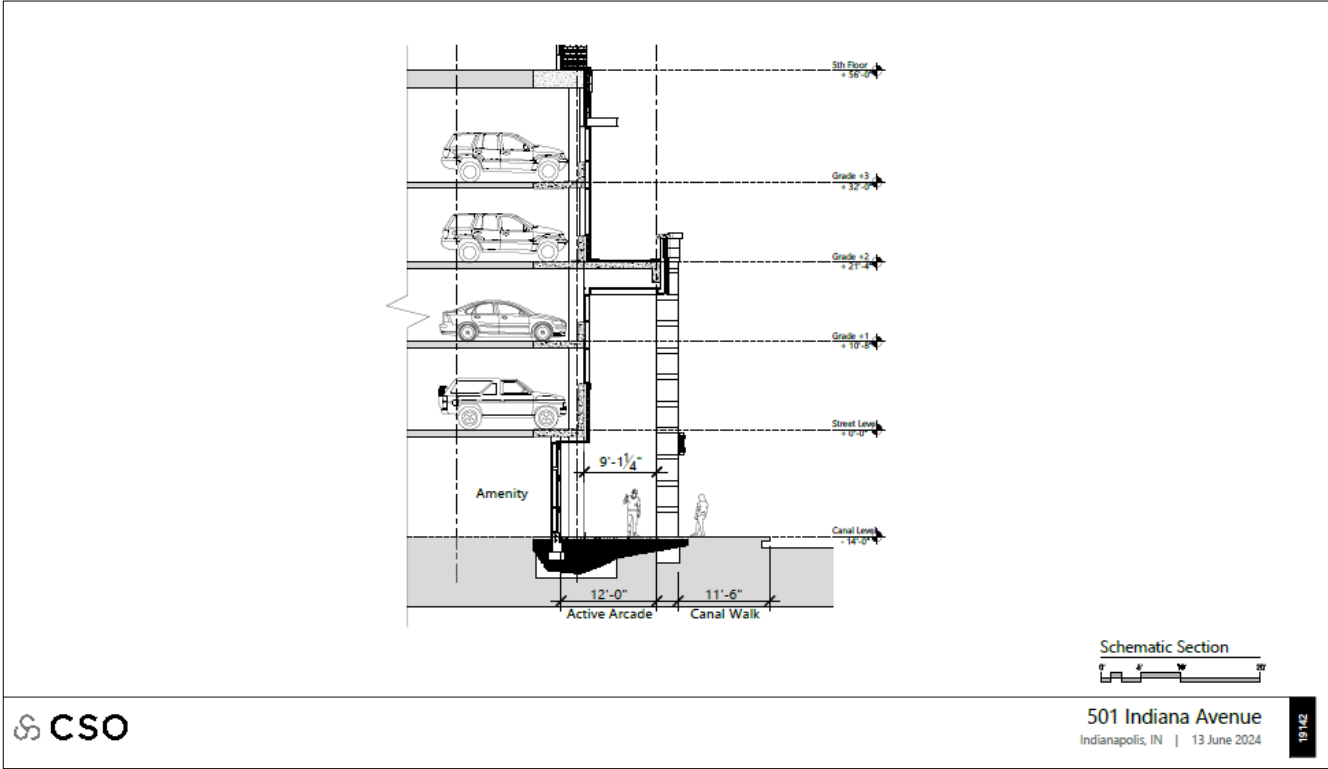
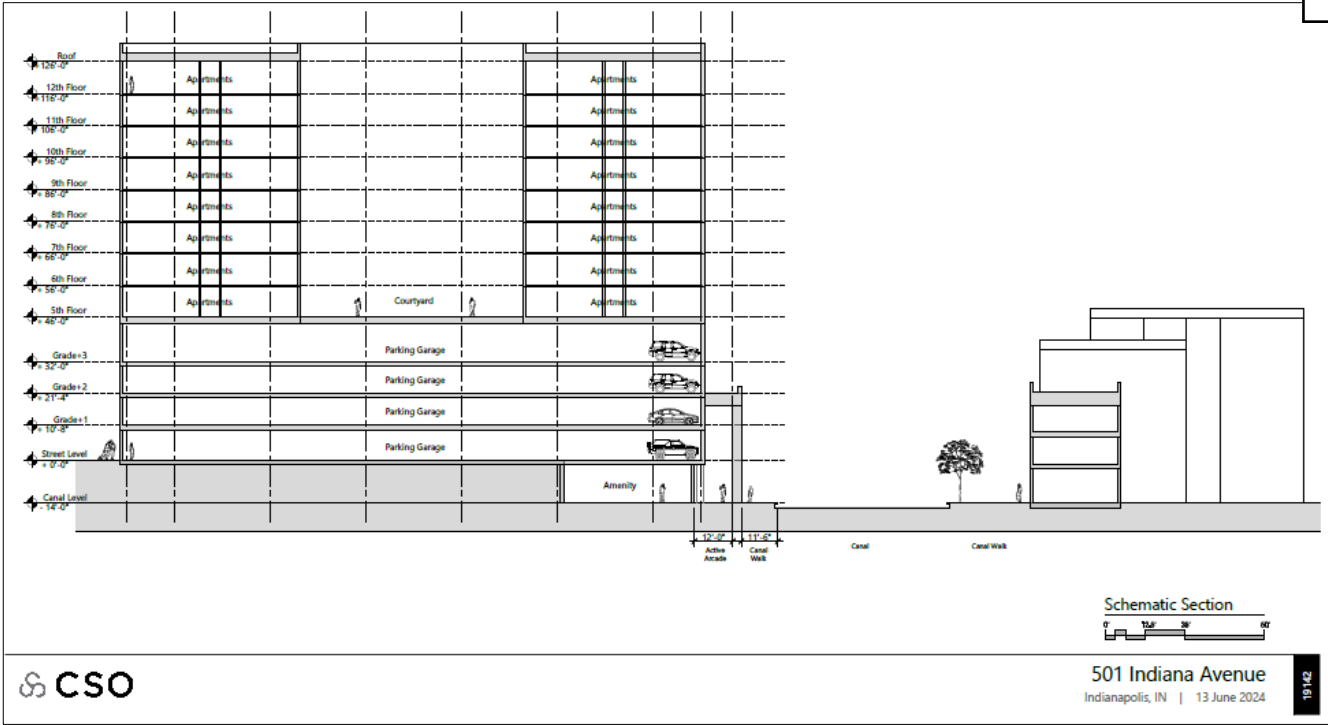
**MATERIALS KEY:**

- A Unit Stone Masonry Veneer  
Color: Buff
- B Thin Brick  
Color: Med. Red/Brown
- C SolidCast Limestone Accent Color  
Color: Buff
- D 1" Insulated Cladding (Wentel, In Warm Frame)  
Color: Black Mullions
- E Steel or Aluminum Canopy  
Color: Black
- F Standing Seam Metal Awning  
Canopy w/ Suspension Rods  
Color: Dark Graphite
- G Fiberglass Frame Window  
Color: Black Frame
- H Sconce Light
- I Aluminum Cladding  
Color: Black
- J Aluminum Cornice Profile w/ Detail Brackets  
Color: Black
- K Painted Channel Detail  
Color: Black
- L Decorative Screen:  
Perforated Aluminum Profile,  
Oversized
- M Louver  
Color: Black

**Key Plan: NTS**

**East Elevation**  
0' 16' 32' 64'

**CSO** 501 Indiana Avenue  
Indianapolis, IN | 13 June 2024





## City Architect Comments

<b>Project Name:</b>	501 Indiana Ave – New Construction
<b>Property Address:</b>	501 Indiana Ave
<b>Developer/Architect:</b>	Arrow Street/ CSO Architects
<b>Comments:</b>	<p><b>6/21/2024</b> – Staff has met with the petitioner multiple times to discuss the design and programming of the proposed development. Our primary concerns have centered on the building’s approach to the adjacent Canal Walk and its presence along Indiana Ave, particularly at the prominent southeast corner of the site.</p> <p>The proposed design’s angled southeast corner creates a strong, successful presence and the patterning and materials speak well to Indiana Ave. The public stair that leads down to the canal is designed in an inviting way that integrates well with the building and the proposed art.</p> <p>The canal-level walkway is successful at creating 12’-0” wide sidewalks both under the colonnade and directly along the canal edge as requested. This will make both spaces usable for outdoor dining, as well as users of the Cultural Trail.</p> <p>The parking garage located directly adjacent to the canal does not meet the Canal Walk Design Guidelines. Interior spaces facing the Canal Walk are typically best suited for active uses with windows and balconies that relate to the pedestrian scale of the Canal, and the proposed design only achieves this at the lower canal-level of the building. The screening of garage with glass storefront is less noticeable as a parking structure than the previously proposed design option of metal screening. We request material samples of the glass proposed for the parking garage area and encourage the use of tinted or frosted glass, so vehicles are not visible from the exterior.</p> <p>The mechanical louvers on the East Elevation seem to stand out from the rest of the storefront and detract from overall façade. Ideally these louvers would be located on the north or west walls of the garage to allow the canal-facing elevation to feel like a true front of the building. A darker tinted window would help these blend in more with the storefront compared to the rendered elevation.</p> <p>Placeholder signage is proposed along the retail tenant areas of the Canal Walk but is not indicated elsewhere on the building. We encourage signage along Indiana Ave be integrated with the flat canopies at the first-floor storefront openings, and we request Administrator’s Approval of all proposed signage.</p>
<b>Staff Recommendation:</b>	Approval
<b>Approval Date:</b>	-

## APPLICABLE DISTRICT TYPOLOGY

### Village Mixed-Use (VMU)

The Village Mixed- Use typology occurs on commercial corridors with mixed-use development. Building ground floors are primarily retail shops, with a possibility of specialized uses such as arts, entertainment venues, inns and some higher-density residential development. The environment is pedestrian in nature with links to transit. Retail shops are supported primarily by the surrounding neighborhood. Massachusetts Avenue is an example of this typology.

## APPLICABLE GUIDELINES

### URBAN STRUCTURE (US) GUIDELINES

*Urban Structure Guidelines relate to large-scale urban design components like viewsheds, landmarks, public spaces and historic resources. Guidelines also relate to historic and current plans for the Downtown area.*

*REQ = Required guideline; ADV = Recommended (Advised) guideline; INFO = Informational; NA = Guideline does not apply.*

<p><b>US1.1 - Consistency with Adopted Plans</b></p>	<p>The Regional Center Zoning Ordinance is the legal basis for the review of development activities in the Regional Center, and the Indianapolis Regional Center Plan 2020 is the legal articulation of the plan components, goals, and standards for the area. The specific guidelines contained in this document are directly related to the implementation of the Indianapolis Regional Center Plan 2020 adopted by the Metropolitan Development Commission. The Indianapolis Regional Center Plan 2020 document contains proposed land use, proposed housing development, pedestrian and bicycle routes, land use framework and other relevant information.</p>	<p>APPRAISAL</p>
<p>REQ</p>	<p><i>US 1.1.1 – Proposals subject to Regional Center review shall be consistent with the following adopted plans, where applicable:</i></p> <ul style="list-style-type: none"> <li>• <i>Indianapolis Regional Center Plan 2020</i></li> <li>• <i>Sixteenth to Thirtieth Street Meridian Street Corridor Land Use Plan</i></li> <li>• <i>Subarea Plans</i></li> <li>• <i>Redevelopment Area Plans</i></li> <li>• <i>Marion County Thoroughfare Plan</i></li> <li>• <i>Indianapolis Regional Pedestrian Plan</i></li> <li>• <i>Indianapolis Metropolitan Planning Area Multi-Modal Corridor and Public Space Design Guidelines</i></li> <li>• <i>Indianapolis Marion County Park, Recreation and Open Space Plan</i></li> </ul>	<p><b>Satisfied</b></p>
<p><b>US1.2 - Boundaries &amp; Edges</b></p>	<p>The mixed-use nature of the Regional Center sometimes produces incompatible land use neighbors, and the incompatible elements should be minimized. Frontage streets and landscaped corridors also function as buffers, boundaries and edges.</p>	<p>APPRAISAL</p>
<p>ADV</p>	<p><i>US 1.2.1 – Buffers consisting of berms, evergreens and/or walls should be constructed in cases where the Indianapolis Regional Center Plan 2020 land use plan indicates residential development or campus development adjacent to industrial development, railroads or Interstates and as the right-of-way or site permits.</i></p>	<p>Not Applicable</p>
<p>REQ</p>	<p><i>US 1.2.2 – High- or medium-density development adjacent to, or near to, low-density residential development (6 to 15 Units/Acre and/or 16 to 27 Units/Acre) is to be designed to minimize traffic congestion on local streets, noise, glare and other negative impacts.</i></p>	<p><b>Satisfied</b></p>
<p>REQ</p>	<p><i>US 1.2.3 – In areas undergoing transformation in land use (such as from industrial to residential), new development should consider the character and impact of existing development. New development should consider mitigating the impacts of existing noise, traffic, service access and other undesirable conditions.</i></p>	<p><b>Satisfied</b></p>

<p><b>US1.3 - Viewsheds, Vistas &amp; Landmarks</b></p>	<p><i>Views of landmark buildings, monuments and plazas and of the downtown skyline are public assets that should be protected. Views of the Soldiers and Sailors Monument, the Capitol Building, the World War Memorial Plaza and the Public Library are the top priorities considered here.</i></p> <p><i>For the purposes of these guidelines protected viewsheds are: (1) Meridian Street from Washington Street to Fall Creek, (2) Market Street from New Jersey Street to Capitol Avenue, (3) Capitol Avenue from Washington Street to Ohio Street, (4) Pennsylvania Street from Ohio Street to St. Joseph Street and (5) Monument Circle.</i></p>	<p>APPRAISAL</p>
<p>REQ</p>	<p><i>US 1.3.1 – Protected viewsheds shall not be obstructed by signs, canopies, awnings, bus shelters, pedestrian bridges, banners, utilities or traffic control signs. A maximum projection of four feet from the property line with a minimum Clear Height Zone of nine feet is not considered to be a visual obstruction.</i></p>	<p><b>Satisfied</b></p>
<p>REQ</p>	<p><i>US 1.3.2 – Only deciduous trees are permitted to be planted in the public sphere (right-of-way) or adjacent to the Pedestrian Way.</i></p>	<p>None proposed</p>
<p>REQ</p>	<p><i>US 1.3.3 – Hotels located along protected viewsheds are to develop any covered vehicle “drop off and pick up” areas on side streets. Hotel pedestrian entrance canopies may be permitted along a viewshed because the hotels provide 24/7 sidewalk activity and access. Design must minimize view obstruction, have no side “curtains,” and be of high quality, durable materials. No pull through drop-off permitted along a protected viewshed. Curbside designated areas are permitted if curbside parking restrictions are compatible.</i></p>	<p><b>Satisfied - location is not within a protected viewshed</b></p>
<p><b>US1.4 - Gateways</b></p>	<p><i>Gateways create a sense of arrival at a place. They can be (1) transitional corridors such as the West Washington Street corridor adjacent to the Zoo linking the downtown and the west side neighborhoods, (2) a physical element marking a point of transition between districts, such as the Interstate underpasses approaching the downtown or (3) the sequence of views leading to a destination, such as views of the downtown skyline starting at 121st Street when southbound on North Meridian Street.</i></p>	<p>APPRAISAL</p>
<p>REQ</p>	<p><i>US 1.4.1 – Existing physical elements in the public sphere, such as bridges and underpasses, are to be designed to be safe for pedestrians, bicycles and vehicles.</i></p>	<p>Not Applicable</p>
<p>ADV</p>	<p><i>US 1.4.2 – The design of bridges, underpasses and other gateways should incorporate unique lighting, painting, graphics and materials.</i></p>	<p>Not Applicable</p>
<p>ADV</p>	<p><i>US 1.4.3 – All gateway projects that are proposed by “grassroots” initiatives will be reviewed for contextual relationships, durability and cultural relevance to the area.</i></p>	<p>Not Applicable</p>
<p><b>US1.5 - Public Art</b></p>	<p><i>Art should be an integral part of infrastructure improvements and new construction. Interactive art, fountains, paving, landscaping, graphics, lighting and sculpture can communicate our culture’s values and create a more vital environment. Art (for the purposes of these guidelines) is defined as original works created by an individual or team that is experienced in their discipline. The following disciplines are included as having the potential for producing original creative works:</i></p> <ul style="list-style-type: none"> <li><i>(1) Artists - visual arts, performing arts and literary arts,</i></li> <li><i>(2) Craftsmen - glass, metal, weaving, quilting, pottery, etc., or</i></li> <li><i>(3) Design professionals - architecture, landscapes, interiors, engineers, etc.</i></li> </ul> <p><i>In general, art is a creative expression by an individual or design team that also ultimately controls the aesthetic outcome.</i></p>	<p>APPRAISAL</p>
<p>ADV</p>	<p><i>US 1.5.1 – Support for the arts is recommended to be integrated into the design of every new public and new commercial project with a floor area over 50,000 square feet in size or having a construction cost of over \$1,000,000.</i></p>	<p>None proposed</p>
<p>ADV</p>	<p><i>US 1.5.2 – Public Art is recommended to be integrated with all new public institution and government construction projects greater than \$1,000,000 in value. Public Art is art that is located on public property and/or integrated with public construction projects. Public Art can include all forms of original works of art, exterior or interior, which are accessible to the public during normal hours of operation.</i></p>	<p>None proposed</p>

REQ	<i>US 1.5.3 – All permanent installations of art located in the Public Sphere or Quasi-Public Sphere shall be constructed of durable materials, not interfere with public safety, and be free of advertising. The installation shall provide access for as many individuals as possible (the provision of access for the mobility, hearing and vision impaired is encouraged), consider public safety and liability issues; consider vehicular and pedestrian traffic patterns; consider the relationship to architectural and natural features, landscape design, environmental impact, and future plans for the area. Petitioners are encouraged to develop a long-term maintenance program for all permanent installations.</i>	None proposed
REQ	<i>US 1.5.4 – All temporary installations of art shall not interfere with public safety and be free of advertising. Petitioners are encouraged to develop a long-term maintenance program for any such installation that uses recurring temporary or non-durable elements (such as flags or banners).</i>	None proposed
ADV	<i>US 1.5.5 – Large scale installations of landscaping (environmental art), urban graphics or art consisting of dispersed components are encouraged. Projects will be reviewed for compatibility with these guidelines.</i>	None proposed

<b>US1.6 - Festivals, Ceremonies &amp; Parades</b>	<i>The Regional Center contains many of the primary festival and celebration spaces in the Central Indiana region, including World War Memorial Plaza, Military Park, Monument Circle, the City Market, White River State Park and the Central Canal Corridor.</i>	APPRAISAL
--	--	-----------

NA	<i>US 1.6.1 – Projects over 150,000 square feet in size should consider developing space for receptions, special events and related activities. The space can be located in the Public, Quasi-public or Private built environment sphere. Ensure that all areas are ADA Accessible.</i>	<b>Satisfied</b>
REQ	<i>US 1.6.2 – Ensure that the responsibility for maintenance of all improvements located in the quasi-public sphere or public sphere is established.</i>	<b>Satisfied</b>

<b>US2.1 - Historic Districts</b>	<i>The Regional Center has many of the most historic resources in the Central Indiana region, and these should be preserved and reinforced. Development in a National Register or locally protected historic district should be contextually sensitive.</i>	APPRAISAL
-----------------------------------	---	-----------

REQ	<i>US 2.1.1– In historic districts designated by the National Register of Historic Places (NRHP) that are not designated by the IHPC, new development shall be contextually sensitive to the district. The Infill Housing Guidelines will be used in reviewing single-family proposals in these districts.</i>	Not Applicable
-----	--	----------------

<b>US2.2 - Individual Historic Resources</b>	<i>The Regional Center has many of the most historic resources in the Central Indiana region, and these should be preserved and reinforced. Reusing and preserving older buildings provides a unique frame for new development, reinforces our sense of place, and environmental concern for recycling.</i>	APPRAISAL
--	---	-----------

REQ	<i>US 2.2.1 – Changes to the exterior of historic resources shall be reviewed for negative effect to the historic character of the building. [See the Guidelines for the General Principles for Historic Preservation.]</i>	Not Applicable
REQ	<i>US 2.2.2 – All proposed development which is located on a site that is intersected by a 200 foot buffer around an historic site, as determined to be historic under Guideline US 2.2.1, are to be reviewed for contextual sensitivity. The potential for the reinforcement of exterior space (corridors, plazas, and historic sites), the incorporation and allusion to details in the existing environment, the use of contextual colors and materials, the reinforcing of landscape precedents, the contribution to the social environment and the design response to seasonal change and the day-night cycle will be considered in the design review. This is not meant to restrict creativity, but rather to encourage development that does not destroy or damage those surrounding characteristics that are important and positive. At one end of the spectrum, this may result in new design that is highly reflective of the surrounding built environment, at the other end, it may result in new design that contrasts, but complements the surrounding built environment. In either case, or all cases in between, new design should make a conscious effort to relate in some meaningful way to its surroundings. Where the immediately surrounding built environment is weak or conflicts with the goals of the Regional Center guidelines, one should look beyond the immediate surroundings for context.</i>	<b>Satisfied</b>

<b>US2.3 - “Mile Square” Plan</b>		<i>Indianapolis is a planned city, platted by Alexander Ralston in 1821. This historic plan is highly unique and should be preserved.</i>	APPRAISAL
REQ	US 2.3.1 – New development is to be designed to reinforce the original Ralston “Mile Square” Plan. Original rights-of-way are to be retained or restored to preserve the historic character of the “Mile Square.”		<b>Satisfied</b>
ADV	US 2.3.2 – Development of the triangular sites on the diagonal avenues should reflect the site configuration.		<b>Satisfied</b>
<b>US3.1 - Demolition</b>		<i>Demolitions are necessary for the evolution of the urban environment. Buildings that are functionally obsolete, unsafe or economically obsolete can negatively affect the potential for orderly transition in growth areas. Demolitions must be done in a manner that is supportive of proposed land use, environmental goals, conservation goals and does not significantly impact the community’s cultural heritage preserved in historic buildings. A demolition should be pursued only out of necessity and not simply out of convenience.</i>	APPRAISAL
REQ	US 3.1.1 – Demolition requests shall receive Regional Center Approval prior to issuing a permit. Demolition requests will be reviewed (1) to determine if the structure is in a Redevelopment District or a special economic development district and might be eligible for incentives, (2) to determine if the proposed reuse of the site is consistent with the Indianapolis Regional Center Plan 2020 and/or Redevelopment Plans and (3) to determine if the property is historic (as defined in US2.2.1) so that interested parties may solicit development alternatives.		<b>Approved under 2024-REG-016A</b>

**SITE CONFIGURATION (SC) GUIDELINES**

Site Configuration Guidelines relate to site use, layout and orientation. They guide building uses and orientation, relationships to adjacent development and corridors and the relationship of site components such as open space, parking, access, service delivery and site security.

REQ = Required guideline; ADV = Recommended (Advised) guideline; INFO = Informational; NA = Guideline does not apply.

<b>SC1.1 - Regional Center Plan 2020</b>		The Indianapolis Regional Center Plan 2020 is the guiding document for land use changes in the Regional Center. As part of the Comprehensive Plan for Marion County, it helps to assure orderly development, protect property values and to promote the regional welfare of the city. Development in the Sixteenth to Thirtieth Street Meridian Street Corridor is also subject to Regional Center Zoning review. The Sixteenth to Thirtieth Street Meridian Street Corridor Land Use Plan is adopted as a segment of the Comprehensive Plan and is to be used to guide development in that area.	APPRAISAL
REQ	SC 1.1.1 – Changes in a site’s land use shall be evaluated relative to its primary zoning classification and the recommendations of the Indianapolis Regional Center Plan 2020 or the Sixteenth to Thirtieth Street Meridian Street Corridor Land Use Plan. Changes in or deviations from a site’s primary zoning shall be as recommended in the Indianapolis Regional Center Plan 2020 or the Sixteenth to Thirtieth Street Meridian Street Corridor Land Use Plan.		<b>Satisfied</b>
<b>SC1.2 - Mixed-Use Development</b>		The Regional Center is a dynamic urban environment where live, work and play space is intimately related. Buildings should be mixed-use in character to reinforce this environment and to spread economic viability over several categories of markets.	APPRAISAL
REQ	SC 1.2.1 – New development and changes in use in areas proposed as High-Density Mixed-Use, Medium-Density Mixed-Use, and Research Community Mixed-Use in the Indianapolis Regional Center Plan 2020 are to have multiple uses in each building or multiple uses controlled by a single development entity. In buildings that are designed primarily for a single use, such as garages or office buildings, highly active grade level uses such as retail, restaurants, cafeterias, lobbies, security and other similar uses will be considered as mixed-use.		<b>Satisfied</b>
<b>SC1.3 - Grade Level Use</b>		Pedestrian activity is encouraged in the Regional Center, and this activity is encouraged both by the presence of pedestrian facilities like sidewalks as well as by the environment through which the pedestrian passes. An active grade level street front is encouraged.	APPRAISAL



	REQ	<i>SC 1.3.1 – In areas proposed as High-Density Mixed-Use, Medium-Density Mixed-Use and Research Community Mixed-Use in the Indianapolis Regional Center Plan 2020, all grade level uses shall be designed to activate the adjacent pedestrian ways. Retail, restaurant and commercial uses are encouraged. Exhibit windows and public art may also be acceptable for areas where retail and commercial uses are not currently feasible.</i>	See Summary
	REQ	<i>SC 1.3.2 – Some or all activity areas of corporate, educational and institutional buildings should be highly visible and located at the grade level. Examples of such activity areas include food services, show rooms, meeting rooms, security offices, exercise rooms and other support functions. Special uses, such as places of worship, court buildings and sports arenas are exempt from this guideline.</i>	See Summary
<b>SC1.4 - Outdoor Living Space</b>		The Regional Center has substantial public greenspace, but the value of land and the density of development effectively reduces or eliminates private greenspace. The opportunity for residents to access outdoor space also increases the amount of social interaction, their visual surveillance and their sense of ownership.	APPRAISAL
	REQ	<i>SC 1.4.1 – New residential development including conversions of existing buildings with more than ten units shall provide 32 square feet of usable outdoor, tenant/owner accessible, plaza space per unit. This area should be designed for active use by residents, and may be associated with outdoor common areas associated with the entry, in a rooftop zone, adjacent to a pedestrian way or adjacent to a parking zone. It shall contain benches, paving, screening, lighting and landscaping. This requirement may be waived if public park, trail or plaza space is within 400 feet (linear along the public sidewalk or pedestrian way) of the primary entrance or if private patios, porches and/or balconies provide at least 32 square feet of usable space for each unit. This requirement will not be applicable to a project that involves the conversion or reuse of an existing building when conditions prevent implementation.</i>	Satisfied, with the Central Canal abutting the site
<b>SC2.1 - Environmental Site Context</b>		Many sites in the Regional Center have location specific characteristics that may require unique design accommodation. Adjacency to streams, levees or greenways, locations in Wellfield Protection or Airspace Zoning Districts, and changes in the grade level all require special consideration.	APPRAISAL
	REQ	<i>SC 2.1.1 – The design, character, grade, location, and orientation of all uses is to be appropriate for the uses proposed, logically related to existing and proposed topology, and other conditions.</i>	See Summary
	REQ	<i>SC 2.1.2 – Development adjacent to a public waterway or public greenway shall not prohibit or substantially hinder public access to such features.</i>	Satisfied
	INFO	<i>SC 2.1.3 – Development regulations established by wellfield protection districts, adjacency to waterways or flood hazards, air space districts, and other environmental regulations may require deviation from some guidelines. Petitioner is to provide documentation for any requested exemption of these guidelines because of such regulations.</i>	Information
<b>SC2.2 - Site Circulation Context</b>		The typical public right-of-way pattern in the Regional Center forms a one-tenth of a mile grid. This pattern allows flexibility in movement and access, flexibility in corridor typology and flexibility in connectivity from one site to another.	APPRAISAL
	REQ	<i>SC 2.2.1 – New development proposals shall not (1) in cases where public right-of-way is proposed to be vacated, isolate or reduce access to nearby sites, (2) in situations where there are multiple public street frontages, create a “back door” image by placing service or security systems exclusively on one frontage and (3) reduce the alternative routes available to accommodate traffic, service access and to provide emergency access in the vicinity of the site.</i>	See Summary
	ADV	<i>SC 2.2.2 – Primary pedestrian access to the site is to be from the public pedestrian way. However, additional pedestrian connections are also encouraged to be made in non-public right-of-way from one site to another.</i>	Satisfied
<b>SC2.3 - Orientation</b>		Buildings in the Regional Center should be urban in nature and located to maintain a sense of defined urban space along a corridor.	APPRAISAL
	REQ	<i>SC 2.3.1 – The lower two levels of the primary facade zone of a building, is to be built to minimum height of 26 feet along the front property line(s) and is to be increased in height at a ratio of one foot vertical for each three feet horizontal if the building facade is set back from the property line. Grade level uses shall be designed to relate to the public pedestrian way and the street grid. The minimum height of 26 feet shall be exclusive of sloped roof forms.</i>	Satisfied
	ADV	<i>SC 2.3.2 – Levels above the second floor (or above a height of 26 feet) may be oriented to relate to views, daylight, and/or energy conservation.</i>	Satisfied

REQ	SC 2.3.3 – In all areas with recommended land use of Residential 6-15 units per acre, buildings shall be set back consistent with the “established setback” of adjacent buildings. Major structures related to parks, plazas, monuments, churchyards and other formal, site-related elements shall not be construed to establish setback requirements.	Not Applicable
REQ	SC 2.3.4 – In areas where High-Density Mixed-Use, Medium-Density Mixed-Use, and Research Community Mixed-Use land use are proposed by the Indianapolis Regional Center Plan 2020, and when the existing right-of-way is a minimum of 90 feet, buildings, shall be a minimum of 26 feet in height and shall be built to the property line on all sides abutting public streets. All streets in the Mile Square have 90 foot or greater rights-of-way. Along all primary and secondary arterial street corridors (as listed in the Official Thoroughfare Plan) with a right-of-way less than 90 feet, buildings shall be a minimum of 26 feet in height and shall be built to a line that is 45 feet from the centerline of the street, on all sides abutting public streets. The additional setback in these locations will enable the provision of bus shelters, deliveries, improved sidewalks, landscaping, improved vehicular circulation, curbside drop-off/pick-up and/or other assets. The following local/collector streets are to be treated as arterial streets: (1) North Alabama Street from St. Clair Street to North Street, (2) North Belmont Avenue from White River Parkway West Drive to West 10th Street, (3) Fletcher Avenue from Calvary Street to South Shelby Street, (4) Ft. Wayne Avenue from East 10th Street to Alabama Street, (5) West Merrill Street from Kentucky Avenue to South Missouri Street, (6) North Pershing Avenue continuation of White River Parkway West Drive to West 16th Street, (7) Riverside Drive East from Waterway Boulevard to West 16th Street, (8) St. Clair Street from Indiana Avenue to Ft. Wayne Avenue, (9) Waterway Boulevard from Indiana Avenue to Riverside Drive East, (10) White River Parkway West Drive from West Michigan Street to North Pershing Avenue, and (11) Milburn Street from Indiana Avenue to West 16th Street.	Satisfied
ADV	SC 2.3.5 – Entry plazas, colonnades, programmed outdoor space and sidewalk circulation related development may be permissible in establishing the build-to line referenced in SC 2.3.1 and SC 3.2.4.	Satisfied

#### SC2.4 - Site Utilization, Maintenance & Safety

The urban environment is a mix of public, quasi-public, and private uses and users, and sites should be designed to improve utilization, maintenance and safety.

APPRAISAL

REQ	SC 2.4.1 – Sites shall be designed to clearly define proposed site utilization and treated accordingly. The private sphere (tenant/owner private space) may be secured and/or treated as quasi-public space. Guest and visitor quasi-public space is to be supervised, lighted, landscaped and clearly marked. Publicly accessible space in the quasi-public sphere is to be treated compatibly with the street and pedestrian way treatment. When establishing any quasi-public sphere zone, ensure that the ownership/maintenance of that zone is arranged prior to opening up such a space to the public.	Satisfied
REQ	SC 2.4.2 – Portions of the site which are “leftover” such as: (1) weed lines in the space between the fence and the alley, (2) spaces between closely adjoining buildings, (3) offsets and notches at the base of the building and (4) emergency egress and loading areas, shall be designed to require low maintenance.	Satisfied
REQ	SC 2.4.3 – Each public right-of-way frontage with secured fenced or walled areas shall have at least one access gate per frontage to encourage owner maintenance and litter removal.	Satisfied

#### SC2.5 - Adaptability

Buildings inevitably undergo change as economic conditions change. Buildings should be designed from the beginning to maximize their adaptability to different configurations and uses. Buildings that are difficult to adapt often fall into blight and have negative impacts on surrounding properties.

APPRAISAL

REQ	SC 2.5.1 – New development that has “zero lot line” side yards abutting existing development is to be designed so that floor heights align on as many floors as possible. At a minimum, the grade level and one additional level must be aligned with adjoining buildings.	Satisfied
ADV	SC 2.5.2 – Commercial and institutional buildings should be designed to accommodate change associated with new technologies, future needs of owners and potential reuse.	Satisfied

REQ	SC 2.5.3 – All new development, including parking structures, in areas identified by the Indianapolis Regional Center Plan 2020 as High-Density Mixed-Use, Medium-Density Mixed-Use, and Research Community Mixed-Use, shall be designed and constructed with provisions for active grade level uses adjacent to pedestrian ways.	<b>Satisfied</b>
-----	---	------------------

<b>SC2.6 - Building Access</b>	As the center of the Central Indiana region and a destination for visitors from all over, the Regional Center built environment must enhance wayfinding.	APPRAISAL
--------------------------------	--	-----------

REQ	SC 2.6.1 – The primary pedestrian access to a building should be easily identifiable and directly from the public pedestrian way. In no case shall primary access across a parking zone be permitted. In situations where the primary pedestrian access to a building is not directly on the public pedestrian way, landscaped pedestrian corridors or plazas shall link entrances directly to the primary pedestrian way serving the use.	<b>Satisfied</b>
-----	--	------------------

<b>SC3.1 - Zoning Required Parking</b>	Each Primary Zoning classification sets forth requirements for parking. However, in the Regional Center, policies to diminish the amount of land devoted to the automobile and to encourage multi-modal transportation should be employed. Parking shall be provided as specified in the primary zoning ordinance. On-street parking, shared parking and commercial parking availability may be considered in granting variances. Existing parking located on the same parcel as new development shall be upgraded to meet all development standards and these Guidelines when there is a greater than 15 percent change in the number of parking spaces. Existing parking that will serve the new development and that is located on other parcels that are unaffected by the new development will not require Regional Center Approval.	APPRAISAL
--	--	-----------

ADV	SC 3.1.1 – Surface parking lots are discouraged. Site related constraints that result from existing building configurations and/or that relate to small unbuildable parcels and/or that are 20 or less parking spaces in size will be taken into consideration in the review of proposed surface parking. Surface parking that is proposed as part of a master plan to achieve ultimate density recommendations will be permitted.	None proposed
-----	--	---------------

ADV	SC 3.1.2 – Parking structures are encouraged in order to increase the density of Regional Center uses.	<b>Satisfied</b>
-----	--	------------------

INFO	SC 3.1.3 – In order to support growth in the use of mass transit and to increase density, development located in the CBD 1 or CBD 2 Zoning Districts and also located in the Mile Square, and all development located in the CBD 3 Zoning District is not required to provide parking.	Information
------	--	-------------

<b>SC3.2 - Surface Parking</b>	Each Primary Zoning classification sets forth requirements for parking. However, in the Regional Center, policies to diminish the amount of land devoted to the automobile and to encourage multi-modal transportation should be employed. Parking shall be provided as specified in the primary zoning ordinance. On-street parking, shared parking and commercial parking availability may be considered in granting variances. Existing parking located on the same parcel as new development shall be upgraded to meet all development standards and these Guidelines when there is a greater than 15 percent change in the number of parking spaces. Existing parking that will serve the new development and that is located on other parcels that are unaffected by the new development will not require Regional Center Approval.	APPRAISAL
--------------------------------	--	-----------

ADV	SC 3.2.1 – Surface parking lots are discouraged. Site related constraints that result from existing building configurations and/or that relate to small unbuildable parcels and that are 20 or less parking spaces in size will be taken into consideration in the review of proposed surface parking. Surface parking that is proposed as part of a master plan to achieve ultimate density recommendations will be permitted.	None proposed
-----	---	---------------

REQ	SC 3.2.2 – New or substantially reconstructed surface parking areas shall be designed considering visibility and safety. They shall also be screened permeably from public rights-of-way and pedestrian ways.	None proposed
-----	---	---------------

REQ	SC 3.2.3 – When surface parking is provided with new construction locate the parking area to the rear or to the side to allow the building facade to front the pedestrian way.	None proposed
-----	--	---------------

REQ	SC 3.2.4 – Provide accessible walkways for pedestrians from the parking lot area connecting to the public pedestrian way.	None proposed
-----	---	---------------

ADV	SC 3.2.5 – Design parking areas to facilitate back-in parking to improve driver vision and safety.	None proposed
-----	--	---------------

ADV	SC 3.2.6 – Provide bio-swales at regular intervals to reduce the heat island effect and improve storm water management as well as provide places for snow storage during the winter.	None proposed
-----	--	---------------

<b>SC3.3 - Parking Structures</b>	The density of the Regional Center necessitates the use of parking structures. Such structures should, however, be treated as buildings that contribute to the surrounding area and not simply utilitarian structures.	APPRAISAL
REQ	SC 3.3.1 – All structured parking fronting on public pedestrian ways shall have the grade level designed to accommodate active uses that generate pedestrian activity, such as retail shops, restaurants, business services and offices.	See Summary
REQ	SC 3.3.2 – Generally the exterior facade of garages visible from the public right-of-way shall be designed to reflect a dominant rectilinear pattern. Exposed sloped ramps often conflict contextually. If sloped parking decks are desired, they should be placed behind a rectilinear pattern facade.	Satisfied
REQ	SC 3.3.3 – Parking structures shall have an articulated façade as if they were an active building. Complete facades with contextually-patterned openings and materials attached to the superstructure (posts and beams) are preferred. Superstructure elements (posts and beams) may form portions of the facade if they incorporate substantial decorative castings and patterns.	See Summary
ADV	SC 3.3.4 – New parking structures serving new development should be integrated with the design of the primary building. Consistency of materials, pattern, grade level development and signage is encouraged. When existing parking structures are used to support new development they should be improved to include consistent signage, lighting, security and landscape features.	See Summary
REQ	SC 3.3.5 – Automobiles and glare from headlights shall be screened from view from the public right-of-way.	Satisfied
REQ	SC 3.3.6 – Exits and entrances shall be designed to minimize pedestrian conflicts. When the right-of-way permits, alley access and parking structures located in the interior of the block are encouraged.	Satisfied
<b>SC3.4 - Access to Parking</b>	Parking must be accommodated and must be easily located. However, it must also not detract from the urban environment.	APPRAISAL
ADV	SC 3.4.1 – Grade level parking facing the perimeter of the block is discouraged.	None proposed
REQ	SC 3.4.2 – Parking lot screening is required if parked vehicles are visible from a public street or pedestrian way. It shall be designed to be permeable, considering visibility and safety.	None proposed
ADV	SC 3.4.3 – Entrances to parking areas should be designed for their intended audience. Public entrances should have a higher-profile entrance than an entrance to a restricted parking area.	Satisfied
ADV	SC 3.4.4 – When the right-of-way permits, alley access and parking in the interior of the block is encouraged.	See Summary
REQ	SC 3.4.5 – Commercial convenience drive-thru pick-up windows are permitted only when not located facing a public street (public right-of-way that is greater than 40 feet in width). High-density and medium-density residential development (as defined by the Indianapolis Regional Center Plan 2020) may provide convenience drop-off and pick-up improvements for residents. The improvements shall not reduce or impede pedestrian or vehicular effectiveness.	Not Applicable
<b>SC4.1 - Construction Site Control</b>	The density of the Regional Center provides all sites with a significant public profile. Construction sites should remain clean and secure and mitigate impacts on surrounding buildings or activities. The public right-of-way shall be maintained clear and free of construction materials, debris, gravel and dust at all times unless a permit has been issued for use of such right-of-way and the construction has been appropriately secured.	APPRAISAL
REQ	SC 4.1.1 – Construction sites shall be fully secured. Construction fences may have creative artwork or informational material specifically about the project under construction. Chain link fencing will be allowed along a pedestrian way to secure a site during construction provided it is covered with canvas or a similar material which may display artwork or informational material specifically about the project under construction.	Satisfied
REQ	SC 4.1.2 – All barriers and alternative pedestrian routes shall be compliant with Americans with Disabilities Act (ADA) standards.	Satisfied
REQ	SC 4.1.3 – Protected pedestrian passageways (ADA compliant) shall be provided when a sidewalk needs to be closed for more than 72 hours because of maintenance activities or new construction. Continued use of vehicular, bicycle and pedestrian modes of transportation shall be provided for during the construction period.	Satisfied

<b>SC4.2 - Service &amp; Delivery Access</b>		Service access to buildings in the Regional Center should balance logistical convenience and the desire to maintain design integrity, public safety, and the pedestrian experience.	APPRAISAL
REQ	SC 4.2.1 – All service and delivery access shall be on site and fully screened, contained within the building, or located below grade and accessible from the alley when alleys serve the site.		<b>Satisfied</b>
REQ	SC 4.2.2 – No trash dumpsters shall be placed directly adjacent to a pedestrian way.		<b>Satisfied</b>
<b>SC4.3 - Security Fencing, Walls &amp; Barriers</b>		In some circumstances security fencing and/or barriers are required for site control. Public sidewalks, alleys and other areas outside of the fence are areas where weeds and litter frequently accumulate.	APPRAISAL
REQ	SC 4.3.1 – Permanent security fencing shall be designed to enhance the building design.		None proposed
REQ	SC 4.3.2 – No chain link fencing is to be visible from a sidewalk or pedestrian way.		None proposed
REQ	SC 4.3.3 – No barbed wire or razor wire is permitted.		None proposed
REQ	SC 4.3.4 – Each public right-of-way frontage with secured fenced or walled areas shall have at least one access gate per frontage to encourage owner maintenance and litter removal.		None proposed
REQ	SC 4.3.5 – Vehicle security barriers or planters are to be designed into the site, and all pedestrian ways must remain Americans with Disabilities Act (ADA) accessible. New development is encouraged to use site design (such as raised steps or planting beds) in lieu of individual security barriers or planters.		None proposed

## **MASSING AND DENSITY (MD) GUIDELINES**

Massing & Density Guidelines relate to general building form, such as building bulk and density.

REQ = Required guideline; ADV = Recommended (Advised) guideline; INFO = Informational; NA = Guideline does not apply.

<b>MD1.1 - Massing</b>		Viewsheds, sight lines, landmark buildings and monuments and other larger-scale urban design elements are public assets that development should enhance and protect. Also refer to CBD Zoning Ordinance “Sky Exposure Plane” requirements.	APPRAISAL
ADV	MD 1.1.1 – New development is to be designed to maximize sight lines to and from the development. The design should provide viewing opportunities from the building of the sidewalk, public areas, and landmarks, as well as incorporate building elements which assist in wayfinding. Balconies, rooftop gardens, courtyards, large windows, grade level visibility, glass elevators, high-rise lobbies with exterior views and public observation decks are encouraged.		<b>Satisfied</b>
ADV	MD 1.1.2 – The impact of shadows, glare, and “wind tunnels” shall be considered in the design of landscaping and site improvements.		<b>Satisfied</b>
REQ	MD 1.1.3 – Views of landmarks, respect for identified Viewsheds, enhanced wayfinding and enhanced pedestrian circulation are to be identified and documented with the plans submitted.		<b>Satisfied</b>
ADV	MD 1.1.4 – The corners of buildings located at the intersection of two, or more, streets should be emphasized in order to create identity, take advantage of the high visibility and enhance wayfinding.		<b>Satisfied</b>
NA	MD 1.1.5 – New structures shall not cast shadows on the south quadrant of the upper plaza (grade plus 20 feet and 100 feet in diameter) of the Soldiers and Sailors Monument between the hours of 10:00 AM solar time and 2:00 PM solar time, from February 21 through October 21. This limitation considers the Azimuth, Altitude and the Intercept created by the 150 foot permissible height for structures located on Monument Place. During Daylight Savings Time the area is protected from 11:55 AM to 3:55 PM clock time. It shifts back one hour during Eastern Standard Time.		Not Applicable
<b>MD2.1 - Density</b>		While a variety of densities are present in even the densest of cities, it is recognized that as the center of the Central Indiana region, low-density, suburban-style development is a	APPRAISAL

detriment to the promotion of pedestrian activity and to the overall economic vitality of the Regional Center.

REQ	<p><i>MD 2.1.1 – Regional Center Floor Area Ratios (RCFAR) shall be met in accordance with the following:</i></p> <p style="padding-left: 40px;"><i>High-Density Mixed-Use: 4:1 and greater;</i></p> <p style="padding-left: 40px;"><i>Medium-Density Mixed-Use: 2:1 and greater;</i></p> <p style="padding-left: 40px;"><i>Research Community: 1.5:1 and greater.</i></p> <p><i>Floor area data by level and use must be provided. In situations where development is proposed to be phased over a period of time greater than five years, a master plan showing phasing is to be submitted. The first phase of the proposed development shall conform to Guideline SC2.6.1: Building Access.</i></p>	<b>Satisfied</b>
-----	--	------------------

## **CHARACTER AND APPEARANCE (CA) GUIDELINES**

*Character & Appearance Guidelines relate to the look and performance of buildings and related elements. They provide guidance on architectural style, individual building components and materials, exterior user amenities and environmental performance.*

*REQ = Required guideline; ADV = Recommended (Advised) guideline; INFO = Informational; NA = Guideline does not apply.*

<b>CA1.1 - Regional Center Zoning Ordinance</b>	The Regional Center Zoning Ordinance, as amended, is the guiding legal ordinance and sets forth general design parameters.	APPRAISAL
INFO	<p><i>CA 1.1.1 – All new development or change of use, signage, building facade treatment, street furnishings and landscaping within the right-of-way, landscape treatment on the site, development intensity and massing of structures shall be so designed to be in conformity with the Indianapolis Regional Center Plan 2020 and Regional Center Zoning Ordinance.</i></p>	Information
<b>CA1.2 - Style</b>	The Regional Center is a dynamic place where each generation expresses itself through the built environment. The architectural style of a building should reflect the time in which it was constructed, but should also be respectful of surrounding styles.	APPRAISAL
ADV	<p><i>CA 1.2.1 – New design should make a conscious effort to relate in some meaningful way to its surroundings. The potential for the reinforcement of exterior space (corridors, plazas and historic sites), the incorporation and allusion to details in the existing environment, the use of contextual colors and materials, the reinforcing of landscape precedents, the contribution to the social environment and the design response to seasonal change and the day-night cycle will be considered in the design review. This may result in new design that is reflective of the surrounding built environment, or it may result in new design that contrasts but complements the surrounding built environment.</i></p>	<b>See Summary</b>
ADV	<p><i>CA 1.2.2 – Buildings should be designed as a whole and in general should not attempt to mix diverse architectural styles.</i></p>	<b>Satisfied</b>
ADV	<p><i>CA 1.2.3 – Literal replication of historic styles is strongly discouraged.</i></p>	<b>Satisfied</b>
ADV	<p><i>CA 1.2.4 – Low- and medium-density franchise or corporate design is discouraged. Buildings should be designed to relate to their context.</i></p>	<b>Satisfied</b>
<b>CA1.3 – Theme</b>	Most urban areas have very distinct districts that are identified by a unique architectural style, streetscape or other physical design. The identity of such districts should be enhanced in the Regional Center.	APPRAISAL
ADV	<p><i>CA 1.3.1 – Historic themes and district themes related to documented initiatives (such as designated Cultural Districts) are encouraged to be promoted in site and building design. Petitioner shall cite the initiative and their design response.</i></p>	Not Applicable

NA	CA 1.3.2 – Significant structures that contribute to the overall form of the Regional Center, such as buildings over 20 stories high, sports and entertainment venues and public buildings, will be reviewed in the broader context of the entire Regional Center.	Not Applicable
----	--	----------------

<b>CA2.1 – Facade Character</b>	The facades of buildings are one of the most important contributors to the urban environment. From the interaction with a building at the pedestrian level to the appearance of skyscrapers from a distance, building facades contribute significantly to the character of the Regional Center.	APPRAISAL
---------------------------------	---	-----------

REQ	CA 2.1.1 – All new buildings shall have a cohesive architectural treatment on all facades as well as on any solid screening elements such as walls. The colors, patterns and quality of materials shall create a unified building form. In situations where there are “zero lot lines” the sides and rear of buildings may conform to the dominant contextual precedent. This guideline is not intended to prohibit variation in the facade treatment that sensitively responds to context, to building code requirements, to service access or to limit the variation in façade design that is large in scale and forms the wall(s) of exterior spaces.	See Summary
-----	--	-------------

ADV	CA 2.1.2 – The facades of buildings shall be designed to have three-dimensional interest. Transparent facade treatment may be used. Flat and minimally textured facades are discouraged.	See Summary
-----	--	-------------

REQ	CA 2.1.3 – In new commercial buildings a minimum of forty percent of the length of the grade level facade, adjacent to the pedestrian way, shall be glazed between two feet and eight feet above grade. In situations where tenants require wall space, the back of shelving may be set back a minimum of two feet and displays placed in the window areas. This guideline is intended to encourage occupant interaction with exterior space, in order to engender “natural surveillance” and social interaction.	Satisfied
-----	---	-----------

REQ	CA 2.1.4 – At the grade level, adjacent to pedestrian ways, glass and/or other glazing materials shall have high transmissivity of visible light and low reflectivity qualities. The percent of visible light transmitted less the percent reflected shall be no less than 59 percent. For example: (1) Clear monolithic uncoated laminated glass transmits 86 percent and reflects 8 percent for a net factor of 78 percent and (2) Aqua-green low reflectivity glass transmits 66 percent and reflects 7 percent for a net factor of 59 percent.	See Summary
-----	--	-------------

ADV	CA 2.1.5 – The articulation of openings, roof line, base and materials should be designed to protect materials from staining. Care should be taken in the detailing of water run-off, use of untreated ground water, use of porous materials, and also the use of copper, core-ten steel or other oxidizing metals. The impact of starling and pigeon roosting habits should also be considered and discouraged adjacent to pedestrian ways and balconies. Such birds prefer to roost on flat ledges or crevices that offer protection from the elements.	Satisfied
-----	---	-----------

REQ	CA 2.1.6 – When a new project requires that an opaque wall or fence be constructed adjacent to the public sidewalk or pedestrian way, the design shall incorporate features to provide visual interest at a minimum of 30-foot intervals. A thirty-foot long expanse would require no features and a 40-foot long expanse would require a minimum of two features. Permanently installed landscape, lighting features, public art, windows and cutouts may be used to create interest. When “new tenant” leasehold improvements are made in existing buildings this guideline applies only to the new construction.	Satisfied
-----	---	-----------

<b>CA2.2 – Materials</b>	Technological advancements have produced a palette of facade materials that varies drastically from the relatively limited palette of the past. A limited palette produced districts with uniform character and appearance, and modern materials should be used to create a similar result. These guidelines are directed toward creating an overall urban fabric with a strong sense of place that reinforces the definition of corridors (such as Meridian Street, the Canal and Mass Avenue) and places (such as University Park and Monument Circle.)	APPRAISAL
--------------------------	---	-----------

REQ	CA 2.2.1 – Materials shall be compatible with the Regional Center urban environment in durability, color, texture and use. Examples of current materials include red to brown tone brick, buff tone brick, limestone, granite, low reflectivity glass, metal frames, concrete and metal panels. Projects should be constructed to be as maintenance free as possible.	See Summary
-----	---	-------------

ADV	CA 2.2.2 – <i>Contrasting, bright colors and light may be used (on less than five percent of facade) for design accent and building identification.</i>	Satisfied
REQ	CA 2.2.3 – <i>Only in residential situations where context permits shall wood siding or cedar shakes be permitted as the primary cladding material.</i>	None Proposed
REQ	CA 2.2.4 – <i>Mirrored glass, polished stainless steel and other highly reflective materials shall only be used in moderation. In no case shall glare create an unsafe driving condition. An analysis of the impact of reflected sunlight (related to glare and heat) shall be submitted if greater than 20 percent of any facade is composed of materials that reflect greater than thirty percent of visible light.</i>	See Summary

<b>CA2.3 – Pattern, Scale &amp; Texture</b>	Building facades or facade sections can provide visual cues to users through varying patterns and scales. Such cues are important in creating a legible built environment.	APPRAISAL
---	--	-----------

ADV	CA 2.3.1 – <i>Patterns reflected in materials and/or the installation of materials should be scaled in context with their use on the building. Generally flat and minimally textured facades are discouraged. Uses that often have opaque exterior walls such as theaters, stadiums, museums, gymnasiums, utilities and industries are to include pattern, scale and texture elements.</i>	See Summary
ADV	CA 2.3.2 – <i>The scale of entrances, fenestration, articulation of the structure and use of materials shall create a balanced, cohesive visual composition that relates to the use and size of the building.</i>	See Summary
ADV	CA 2.3.3 – <i>The pattern, perceived size and placement of fenestration or other building openings and horizontal bands should reflect and/or reconcile similar patterns on adjacent buildings.</i>	Satisfied
ADV	CA 2.3.4 – <i>In general, patterns should be more fine-grained and provide greater texture and visual interest nearer the ground level, especially when adjacent to a pedestrian way.</i>	Satisfied

<b>CA2.4 – Window Treatment</b>	Mirrored, tinted or otherwise blocked windows create undesirable “dead zones” along the sidewalk. The interaction between the public sphere and private sphere is critical to developing an accessible, inviting and safe pedestrian environment.	APPRAISAL
---------------------------------	---	-----------

REQ	CA 2.4.1 – <i>At the grade level, adjacent to pedestrian ways, glass and/or other glazing materials shall have high transmissivity of visible light and low reflectivity qualities. The percent of visible light transmitted less the percent reflected shall be no less than 59 percent. For example: (1) Clear monolithic uncoated laminated glass transmits 86 percent and reflects 8 percent for a net factor of 78 percent and (2) Aqua-green low reflectivity glass transmits 66 percent and reflects 7 percent for a net factor of 59 percent.</i>	See Summary
REQ	CA 2.4.2 – <i>Upper-level windows that are mirrored or otherwise highly-reflective must not significantly reflect light onto adjacent buildings, plazas or public rights-of-way. Mirrored glass shall be used in moderation. An analysis of the impact of reflected sunlight (related to glare and heat) shall be submitted if greater than 20 percent of any facade is composed of materials that reflect greater than 30 percent of visible light. In no case shall glare create an unsafe driving condition. This information may be submitted conceptually at the schematic design phase. If additional analysis is warranted the architect may submit impact information at the appropriate design phase.</i>	See Summary
REQ	CA 2.4.3 – <i>The fenestration pattern of grade level windows and openings shall be compatible with the grade level use and the urban context. Movable security accordion type gates and overhead security barriers are not permitted. Permanently installed grills shall be compatible and integrated with the building design.</i>	Satisfied
REQ	CA 2.4.4 – <i>Awnings, shutters and other energy conservation devices shall be designed integral with the building.</i>	Satisfied
REQ	CA 2.4.5 – <i>All sides of the building with fenestration and/or required openings that are abutting developable property not controlled by the owner shall be offset and/or set back from the property line a distance consistent with the requirements of the relevant building codes and/or fire rated as required, unless air-rights (or development rights) are acquired from adjacent properties.</i>	Satisfied



ADV	CA 2.4.6 – <i>In the Village Mixed-Use district typology, it is recommended that all grade level windows on new structures that are adjacent to the public sidewalk be able to be opened.</i>	None proposed
<b>CA2.5 – Signs</b>		APPRAISAL
REQ	CA 2.5.1 – <i>Buildings shall be designed to incorporate building and business signs into the facade design. Signs shall be compatible with the architectural pattern, style and fenestration of the building.</i>	See Recommendations
REQ	CA 2.5.2 – <i>Signs shall be “architectural type” letters. The individual letters may be lighted, back lit or neon type letters. Backlit panel or “box type” signs are generally discouraged. If these sign types are used, the background shall be non-reflective, opaque and dark in color with lettering light in color.</i>	See Recommendations
REQ	CA 2.5.3 – <i>Projecting signs shall be permitted when they are integrated with the building design and when contextual relationships are compatible. Signs shall have maximum projection of four feet in to the right-of-way with a minimum Clear Height Zone of nine feet.</i>	See Recommendations
REQ	CA 2.5.4 – <i>Strobe lights, motion and other attention-getting devices shall not be used.</i>	None proposed
ADV	CA 2.5.5 – <i>Grade level window signs and displays are permitted but shall not obscure more than 15 percent of the total window area or more than 15 percent of any single storefront window panel and shall only contain materials for products or services (or representative of services) available on premises.</i>	See Recommendations
REQ	CA 2.5.6 – <i>Signs are to have an 80 percent contrast ratio to enhance legibility for the sight impaired.</i>	See Recommendations
ADV	CA 2.5.7 – <i>Signs are encouraged to be designed creatively and artistically.</i>	See Recommendations
REQ	CA 2.5.8 – <i>All buildings shall have the street address number clearly visible, daytime and nighttime, from the pedestrian way and from the vehicle travel lanes for each public entrance. Numbers shall be a minimum of four inches in height.</i>	See Recommendations
<b>CA2.6 – Rooflines/Rooftops</b>		APPRAISAL
REQ	CA 2.6.1 – <i>The uppermost portion of the facade (building massing, roof form, eave, cornice, upper floor level(s), roof top design and/or parapet) of all buildings shall be articulated with a treatment in scale with the building.</i>	Satisfied
REQ	CA 2.6.2 – <i>Rooftop zones are to be designed integral with the building with consideration given for the view from the grade level and from other buildings. Mechanical equipment shall be placed to complement the building design and/or screened with materials consistent with the building’s design.</i>	Satisfied
ADV	CA 2.6.3 – <i>Public art and rooftop gardens are encouraged in rooftop design.</i>	None proposed
ADV	CA 2.6.4 – <i>The illumination of the uppermost portion of the facade (building massing, roof form, eave, cornice and/or parapet) of buildings over 10 stories in height is recommended. Design principles related to energy conservation and light pollution are to be followed.</i>	None proposed
<b>CA2.7 – Facade Lighting</b>		APPRAISAL
ADV	CA 2.7.1 – <i>The architectural lighting of building features and special seasonal power should be incorporated into the building design.</i>	None proposed
ADV	CA 2.7.2 – <i>In the Campus, Entertainment, Urban Mixed-Use, Village Mixed-Use and Urban Core district typologies, where night time use is typical, the lighting of facade features is encouraged.</i>	None proposed
REQ	CA 2.7.3 – <i>Facade lighting should be done in a manner as to minimize light “overspray” onto adjacent properties or public rights-of-way. It should also be done with a minimum amount of lighting to minimize light pollution.</i>	None proposed

ADV	CA 2.7.4 – <i>The illumination of the uppermost portion of buildings over 10 stories in height is recommended.</i>	None proposed
ADV	CA 2.7.5 – <i>When lighting (such as to accent windows or architectural elements) is used to contribute significantly to the overall design of structure or site, the installation should require low maintenance and be easily accessible. When operating, no more than 10 percent of the lighting shall be nonfunctioning at any point in time.</i>	None proposed
ADV	CA 2.7.6 – <i>Except in the Entertainment Mixed-Use district typology, the non-sign use of exposed neon tubing (such as to accent windows or architectural elements) should be used sparingly.</i>	None proposed

<b>CA2.8 – Awnings &amp; Canopies</b>	Awnings and canopies can contribute to the public streetscape while providing protection from the elements for pedestrians. They may also be used for energy conservation and as signage.	APPRAISAL
---------------------------------------	---	-----------

ADV	CA 2.8.1 – <i>Awnings and canopies are encouraged in order to provide energy conservation and inclement weather protection to clients and pedestrians.</i>	<b>Satisfied</b>
REQ	CA 2.8.2 – <i>Awnings and canopies may have business identification signage on no greater than 15 percent of any surface.</i>	<b>Satisfied</b>
REQ	CA 2.8.3 – <i>Backlit or internally-illuminated vinyl or plastic awnings are not allowed.</i>	<b>Satisfied</b>
REQ	CA 2.8.4 – <i>Awnings shall have no greater than a four foot projection into the public right-of-way. Marquees associated with entertainment venues will be reviewed separately as a component of entrance design.</i>	<b>Satisfied</b>
REQ	CA 2.8.5 – <i>Awnings and canopies shall maintain the clear height zone with a minimum clearance of nine feet under the lowest part of the assembly.</i>	<b>Satisfied</b>
REQ	CA 2.8.6 – <i>Canopies and canopy supports shall not impede pedestrian traffic, or narrow or otherwise restrict the pedestrian way. Canopies should not be located on building corners at intersections unless their supports do not interfere with pedestrian movement. All development in the right-of-way is subject to the issuance of an Encroachment Permit by the Indianapolis Department of Public Works.</i>	<b>Satisfied</b>

<b>CA 3.1 – Building Entrances/Exits</b>	As the center of the Central Indiana region and a destination for visitors from all over, the Regional Center built environment must be universally legible.	APPRAISAL
--	--	-----------

REQ	CA 3.1.1 – <i>New building entrances shall face the public street, be emphasized and weather protected when possible.</i>	<b>Satisfied</b>
ADV	CA 3.1.2 – <i>Building entrances should be designed in a manner to provide visual cues, such as entry scale, that differentiate public and private entrances.</i>	<b>Satisfied</b>
REQ	CA 3.1.3 – <i>Entries shall be lighted from dusk until dawn. Design principles related to energy conservation and light pollution are to be followed.</i>	<b>See Summary</b>
ADV	CA 3.1.4 – <i>Buildings at the intersection of two streets, or more, should consider corner access in order to treat each frontage equally and to provide easy access for pedestrians from the crosswalks.</i>	<b>Satisfied</b>
REQ	CA 3.1.5 – <i>Exit doors that open directly into the pedestrian way, street or alley shall be designed to provide safe egress and to not conflict with the sidewalk or Pedestrian Way utilization. Each door condition should be evaluated based on the volume of use, user visibility, accessibility and safety. Pedestrians normally maintain an 18 inch clear zone when walking adjacent to a wall.</i>	<b>Satisfied</b>

<b>CA 3.2 – Arcades, Tunnels &amp; Walkways</b>	The density of the Regional Center promotes pedestrian activity year-round. Protection from inclement weather should be promoted to enhance the pedestrian experience.	APPRAISAL
---	--	-----------

ADV	CA 3.2.1 – <i>Interior arcades that are integral with the design of the building are encouraged in public buildings, hotels and mixed-use buildings.</i>	<b>Satisfied</b>
ADV	CA 3.2.2 – <i>Protection from inclement weather should be provided at transit stops when possible.</i>	None proposed
ADV	CA 3.2.3 – <i>Existing non-grade level walkway systems (skywalk, Canal level and tunnel) are to be extended and enhanced.</i>	<b>Satisfied</b>

<b>CA 4.1 – Exterior Site Furnishings</b>		Exterior site furnishings located in the public and semi-public spheres contribute to the character of the public corridor and accommodate pedestrians and public gatherings.	APPRAISAL
REQ	CA 4.1.1 – All exterior light standards, tree grates, seating, etc. shall be dark finished metal, granite or other durable materials. Dark green, dark red, black or dark anodized colors are Color and material variations will be considered when the design of the site furnishings is directly related to the architectural materials and treatment of the building. This Guideline does not apply to art (defined as original works created by an individual or team that is experienced in their discipline.)	See Recommendations	
REQ	CA 4.1.2 – Benches, bollards, trash receptacles, light standards and other similar elements shall not have advertising or business identification signage.	See Recommendations	
REQ	CA 4.1.3 – All elements that are approved to be in the public right-of-way placed by the adjacent property owner shall be maintained by the property owner and removed as required for safety, access and utility maintenance.	See Recommendations	
REQ	CA 4.1.4 – Because of the visual clutter created by the misalignment of movable exterior site furnishings, movable waste receptacles, tables and planters are to be circular in plan. This does not apply to furnishings placed as a component of a regulated Sidewalk Restaurant.	See Recommendations	
ADV	CA 4.1.5 – All outdoor site furniture is encouraged to incorporate artistic elements or be designed as a work of public art.	See Recommendations	
<b>CA 4.2 – Pedestrian &amp; Bicycle Amenities</b>		The Regional Center should accommodate and promote pedestrian and bicycle activity as a way to reduce vehicle traffic and pollution and to promote public health.	APPRAISAL
ADV	CA 4.2.1 – In areas identified by the Indianapolis Regional Center Plan 2020 as High-Density Mixed-Use, Medium-Density Mixed-Use and Research Community Mixed-Use, outdoor seating, bicycle parking and weather protection are encouraged adjacent to or accessible from the pedestrian way.	Satisfied	
REQ	CA 4.2.2 – Commercial and institutional developments of more than 50,000 square feet are required to provide at least one bicycle parking space per 10,000 square feet of building.	See Summary	
ADV	CA 4.2.3 – Office, institutional and industrial developments are encouraged to provide shower and changing facilities for employees commuting by bicycle or by walking.	None proposed	
REQ	CA 4.2.4 – Residential development containing 20 or more residential units shall provide sheltered and secure bicycle storage with a no-step entry for alternative transportation modes (such as bicycle, scooter or motorcycle). Such facilities shall be provided at a ratio of at least one space per four residential units. The storage may be accommodated by providing space in a dedicated storage room designed for this purpose, space in a parking facility, or exterior storage facilities that are integrated with the site development. Projects composed of town homes or apartments with direct access to their own private garages are exempted.	See Summary	
<b>CA 4.3 – Site Lighting</b>		Lighting should be provided in all built environment spheres at an appropriate level to provide for the safety and security of users.	APPRAISAL
REQ	CA 4.3.1 – Pedestrian circulation corridors are to have pedestrian scale lighting.	See Summary	

REQ	CA 4.3.2 – Building entries, sidewalks and heavily used pedestrian areas in areas designated by the Indianapolis Regional Center Plan 2020 as High- Density Mixed-Use, Medium-Density Mixed-Use or Research Community Mixed-Use, as well as in the Campus district typology, are to be lit to a level of 4 to 8 foot-candles. Metal halide lamps (because of more effective visibility and better color rendition in the ultraviolet range) are preferred in high activity pedestrian areas. General lighting shall be provided to light vehicular parking, vehicular travel surfaces, plazas and service areas. The foot-candle level shall be designed to provide the minimum lighting needed for safety. A level of 1 to 5 foot-candles with a maximum variance of 4 to 1 for the brightest to dimmest lit spot is recommended by the Illuminating Engineering Society of North America (IESNA). High pressure sodium may be used in areas where general lighting is provided. Outdoor lighting design should take into account, (1) specific site conditions, (2) reducing light pollution, (3) reducing energy consumption, (4) improving safety and (5) aesthetic considerations.	See Summary
REQ	CA 4.3.3 – Light sources shall be “full cut” shielded and direct light onto the surface area only. Lighting filaments in excess of 2000 lumens shall not be visible at the lot line, adjacent buildings or from above the source. Likewise shall the level of light from a light source not exceed one foot-candle at the lot line, entering an adjacent building or above the source. When appropriate, exceptions may be made for decorative, ornamental and “historic period” lights (acorn globe, pendant, etc.), which shall be designed to minimize light overspray and light source contrast.	See Summary

<b>CA 4.4 – Screening</b>	The impact of parking zones and service/utility equipment and similar facilities should be minimized aesthetically and functionally on surrounding properties and pedestrian ways.	APPRAISAL
---------------------------	--	-----------

REQ	CA 4.4.1 – Mechanical equipment, loading docks and trash removal areas shall be screened from view from the public streets and pedestrian ways. Dumpsters shall not be located adjacent to a pedestrian way.	See Summary
REQ	CA 4.4.2 – Screening materials are to be the same as the primary building materials and/or composed of permanent landscape elements such as: architectural metal fencing, masonry, trees, evergreen plant material, and berms.	Satisfied
REQ	CA 4.4.3 – Surface parking areas adjacent to the public right-of- way or pedestrian way shall have a minimum four foot deep planting area to provide for screening with trees, walls, berms and/or ground planting. Clear sightlines between three feet and seven feet above the sidewalk grade are to be maintained to promote visibility and safety (except where the primary zoning ordinance requires clear sightlines between two and one-half feet and nine feet at clear sight triangle areas at vehicular intersections). The design of the lower three feet (two and one-half feet in clear sight triangle areas) of the screening shall be permanent, durable and easily maintained. A solid “knee wall” or berm with ground level evergreen planting is recommended.	None Proposed

<b>CA 4.5 – Paving Materials</b>	Paved areas of a site, including sidewalks, plazas, and parking zones should be designed integral with the building and should also minimize storm water runoff that significantly contributes to water pollution.	APPRAISAL
----------------------------------	--	-----------

ADV	CA 4.5.1 – Paving materials and installation patterns shall complement the building design and site utilization.	Satisfied
REQ	CA 4.5.2 – Plazas, sidewalks, outside eating areas and all other paved areas in the public or quasi-public spheres and not in a parking zone or service zone shall be constructed of masonry pavers or concrete (no asphalt or crushed stone permitted.)	Satisfied
REQ	CA 4.5.3 – Parking zones with more than 20 parking spaces shall be constructed of a permanent permeable material (such as permeable asphalt or unit masonry systems) or shall provide and maintain bio-swales or other natural methods to substantially eliminate storm water runoff. Creative and artistic solutions are encouraged. If petitioner proposes standard asphalt, concrete or other non-permeable paving, runoff and onsite detention documentation must be provided.	Satisfied
REQ	CA 4.5.4 – Paving systems and materials installed in the right-of-way by property owners shall meet Department of Public Works and Americans with Disabilities Act (ADA) standards.	Satisfied

<b>CA 4.6 – Urban Forestry &amp; Plant Material</b>		The density of development in the Regional Center produces an “urban heat island” created by the absorption of heat by pavement and buildings. Planting materials can mitigate this effect while also reducing pollution and storm water runoff and creating a more aesthetic environment.	APPRAISAL
REQ	CA 4.6.1 – Plant materials are to be selected to exhibit seasonal coloration and flowers. All landscape design is to emphasize seasonal variation.	See Recommendations	
REQ	CA 4.6.2 – In parking zones, deciduous shade trees (minimum of four inch caliper) are to be provided and maintained at a minimum of one tree for each 1,600 square feet of paving in order to achieve 25 percent canopy coverage in 10 years of growth. Required trees may be clustered in islands, but only if such clustering will not impact the target of 25 percent of the parking zone being covered by tree canopy in 10 years of growth.	Not applicable	
REQ	CA 4.6.3 – Tree islands in parking lots should be a minimum of 130 square feet per tree with irrigation or 150 square feet per tree without irrigation. This minimum requirement may be waived if the pavement is permeable. All tree islands shall be curbed to prevent damage to the tree.	Not applicable	
REQ	CA 4.6.4 – Planting materials selected must be suitable to urban conditions. Trees with shallow root systems that could severely impact paved areas, or be severely impacted by paved areas, should be avoided. A wide range of species might be used depending on general conditions such as hardiness and site-specific conditions related to performance, soil, sunlight, exposure to pollutants, etc. Each site plan will be reviewed to determine the appropriateness of the proposed plant material.	See Recommendations	
REQ	CA 4.6.5 – Interior trees should be selected that have large canopies in order to maximize the surface area of pavement covered by the tree canopy. Perimeter trees should be selected that are columnar in order to visually maintain the urban “wall” of the corridor. Also consult guidelines relating to the adjacent public corridor for guidelines relating to street trees.	None proposed	
REQ	CA 4.6.6 – Clear sightlines between three feet and seven feet above the sidewalk and/or parking grade are to be maintained to promote visibility and safety.	None proposed	
REQ	CA 4.6.7 – All trees in parking zones or adjacent to a pedestrian way or activity zone must maintain a clear height zone of no less than nine feet. Only deciduous trees are permitted to be planted in the public sphere (right-of-way) or adjacent to the pedestrian way.	None proposed	
INFO	CA 4.6.8 – Alternative, documented systems of reducing urban heat build-up may be proposed.	Information	
INFO	CA 4.6.9 – Designers should consult the Indianapolis Metropolitan Planning Area Multi-Modal and Public Space Design Guidelines for information related to plantings in the public right-of-way. Designers should also refer to current City Ordinances that regulate maintenance, planting and trees.	Information	
<b>CA 5.1 – LEED Standards</b>		Development in the Regional Center should reflect innovation in environmentally sustainable building methods and materials.	APPRAISAL
ADV	CA 5.1.1 – Building and site development which conforms to Leadership in Energy and Environmental Design (LEED) Standards published by the U.S. Green Building Council are encouraged.	Information	
INFO	CA 5.1.2 – Environmentally sound design solutions may include elements that are not anticipated in these Design Guidelines. Exceptions to the Design Guidelines will be considered for documented energy and environmental components.	Information	
<b>CA 5.2 – Rooftop Gardens</b>		Green roofs can reduce urban heat islands, reduce sewage system loads by assimilating large amounts of rainwater, absorb air pollution, collect airborne particulates, store carbon and insulate a building from extreme temperatures.	APPRAISAL
ADV	CA 5.2.1 – Wherever practical, install “green roofs” consisting of vegetation and soil, or a growing medium, planted over a waterproof membrane. Additional layers, such as a root barrier and drainage and irrigation systems may also be included.	None proposed	

CA 5.3 – Passive Heating/Cooling	Buildings designed for passive solar and daylighting incorporate design features such as large south-facing windows and building materials that absorb and slowly release the sun’s heat. No mechanical means are employed in passive solar heating. Incorporating passive solar designs can reduce heating bills as much as 50 percent. Passive solar designs can also include natural ventilation for cooling. Windows are an important aspect of passive solar design. In cold climates, south-facing windows designed to let the sun’s heat in while insulating against the cold are ideal. Interior spaces requiring the most light, heat, and cooling are located along the south face of the building, with less used space to the north.	APPRAISAL
ADV	CA 5.3.1 – All projects should incorporate passive solar heating, cooling and daylighting strategies recommended by the Energy Efficiency and Renewable Energy (EERE) section of the U.S. Department of Energy.	Information
CA 5.4 – Energy Use	For businesses and residential development, a strategic approach to energy management can produce significant savings for operation costs and the environment. Also, the Federal Energy Policy Act of 2005 outlines energy efficient residential systems for which Federal Tax Credits are available. The eligible energy systems include certified: (1) Windows & Doors, (2) Roofing Insulation, (3) HVAC Systems, (4) Water Heaters, (5) Solar Energy Systems, (6) Fuel Cells, (7) Air Source Heat Pumps, (8) Geo-Thermal Heat Pumps, (9) Solar Water heating, (10) Photovoltaic Systems and (11) Fuel Cells.	APPRAISAL
ADV	CA 5.4.1 – All projects are encouraged to follow standards recommended by Environmental Protection Agency’s (EPA ) ENERGY STAR partnership which offers an energy management strategy that helps in measuring current energy performance, setting goals, tracking savings and rewarding improvements.	Information
CA 6.1 – Utilities	The Regional Center is the postcard of Central Indiana, the primary destination for visitors to the area and a major economic center. Therefore the visual presence of utilities should be minimized. The inherent maintenance and innovation related to utilities should be planned and incorporated into the building and site to minimize future disruption.	APPRAISAL
REQ	CA 6.1.1 – All on-site utility service access is to be buried when new construction is located more than 20 feet from an existing utility supply. New development is encouraged to provide for long-term utility and communication access flexibility.	Satisfied
REQ	CA 6.1.2 – Any utility and service connections and equipment placed along a pedestrian way are to be placed in the frontage zone and shall not impede the pedestrian way. Where possible, all such connections and equipment should be located in a screened service zone or other area not adjacent to a pedestrian way.	Satisfied
CA 6.2 – Curb Cuts/Driveways	In the Regional Center, accommodating the pedestrian is paramount. Service drives, parking access drives, and other crossing zones must be designed in a way so as not to impede the continuity of the accessible pedestrian network.	APPRAISAL
REQ	CA 6.2.1 – Pedestrian way paving treatment shall be continuous through curb cuts (and also compliant with Americans with Disabilities Act (ADA) standards.) Textured pavement and other “Traffic Calming” devices shall be used to create a safe environment for pedestrians.	Satisfied
ADV	CA 6.2.2 – When the right-of-way permits, alley access and parking in the interior of the block is encouraged.	Satisfied
REQ	CA 6.2.3 – Locate driveway aprons outside of the pedestrian way, with the sloped portion entirely within the separation zone (SZ).	Satisfied
REQ	CA 6.2.4 – Maintain the pedestrian way pavement and pattern at a cross slope of 1:50 (one foot high, 50 feet long) across the driveway.	Satisfied
ADV	CA 6.2.5 – Where necessary to keep the driveway slope from exceeding 1:10 (one foot high, 10 feet long), the sidewalk may be partially dropped to meet the grade at the top of the apron. This is preferred to extending the sloped apron into the pedestrian way.	Satisfied

## SUMMARY

Review of the Guidelines against the submitted plans reveals the following items that remain outstanding or require explanation:

1. The east elevation includes material labels that are incorrectly identified. Specifically, the storefront windows at the parking garage are identified as Decorative Screen (L). The installation of storefront windows would be a consistent material in these areas, per SC 3.3.1, SC 3.3.3, SC 3.3.4, CA 1.2.1, CA 2.1.1, CA 2.1.2, CA 2.3.1, and CA 2.3.2. An amended east elevation shall be submitted and subject to staff review and approval, prior to the issuance of an Improvement Location Permit.
2. The east elevation indicates that there would be two different glass types on the upper and lower storefront openings. Glass shall not be highly reflective in any area of the building. Glass samples shall be submitted for review at the hearing. See CA 1.2.1, CA 2.1.1, CA 2.2.4, and CA 2.4.2. In addition, glass at grade level, adjacent to pedestrian ways, shall have a minimum 59% visible light and low reflectivity qualities. See CA 2.1.4 and CA 2.4.1.
3. The east elevation includes two areas where mechanical equipment would be shielded with the use of metal louvers, and the mechanical room also appears to be in a different location than shown on the plans. This must be clarified, prior to approval of this request. Additionally, staff is concerned with the use of a large new building material in place of storefront windows. See CA 1.2.1, CA 2.1.1, CA 2.1.2, CA 2.2.1, CA 2.3.1, CA 2.3.2, and CA 4.4.1.
4. The canal level floor plan does not identify room labels, such as use for retail, amenity, etc. This level is adjacent to the Central Canal and a highly used pedestrian way. An amended canal level floor shall be submitted prior to the hearing. See SC 1.3.1, SC 1.3.2, SC 2.1.1, and SC 2.2.1.
5. The parking garage would be accessed from Indiana Avenue. Alley access is not possible. Therefore, SC 3.4.4, a recommended Guideline, cannot be met.
6. A lighting plan was not submitted to the file to identify the location of lighting standards. Additionally, a photometric plan has not been submitted to the file. A photometric plan should detail light standards and photometric levels for the site and at each entrance. Lighting must be provided at each entrance and must be dusk to dawn. Only full cut and shielded light standards are permitted with minimum foot-candle power outlined in CA 4.3.2 and CA 4.3.3. Pedestrian areas and entries must be lighted for safety (CA 3.1.3 and CA 4.3.1). A lighting and photometric plan shall be submitted and subject to planning staff review and approval, prior to installation.
7. The submitted plans do not detail potential locations of bicycle parking, other than four bicycle spaces proposed along Indiana Avenue. In accordance with CA 4.2.2, one bicycle space per 10,000 square feet of building area is required, plus, residential development of over 20 units shall be provided sheltered and secured bicycle storage, per CA 4.2.4. An amended bicycle plan shall be submitted and subject to staff review and approval, prior to the issuance of an Improvement Location Permit.

**RECOMMENDATIONS**

Staff **recommends approval** of Part B of this Regional Center Approval petition, subject to the following conditions:

1. The Summary items must be met.
2. A 'Right of Entry' shall be granted by the City for work to be completed within the 'Grant of Easement' area defined under Instrument No: 920000495.
3. Signage locations along Indiana Avenue shall be identified on an amended site plan, prior to the issuance of an Improvement Location Permit. See CA 2.5.1, CA 2.5.2, CA 2.5.3, CA 2.5.5, CA 2.5.6, and CA 2.5.7.
4. An amended landscape plan shall be submitted and subject to staff review and approval, prior to installation. Said landscape plan shall identify specific flora species. See CA 4.6.1 and CA 4.6.4.
5. All exterior materials (i.e., furniture) shall be submitted and subject to planning staff review and approval prior to installation. See CA 4.1.1, CA 4.1.2, CA 4.1.3, CA 4.1.4, and CA 4.1.5.
6. Address numerals shall be installed on the building façade prior to occupancy of the building, per CA 2.5.8.

**ZONING HISTORY**

**2024-REG-016A; 501 Indiana Avenue**, requested Regional Center Approval to demolish an existing office structure, **approved**.

JY

\*\*\*\*\*



# STAFF REPORT

## REGIONAL CENTER HEARING EXAMINER - HIGH IMPACT CASE

<b>Case Number</b>	2024-REG-028
<b>Address (approx.)</b>	639 South Delaware Street
<b>Location</b>	Center Township, Councilmanic District # 18
<b>Petitioner</b>	Eli Lilly and Company, by Andi M. Metzger
<b>Zoning</b>	I-3 (RC)
<b>Request</b>	Regional Center Approval to provide for a 775-person, two-story conference center, within an existing corporate campus.

### GENERAL INFORMATION

<b>Existing Zoning</b>	I-3 (RC)	
<b>Existing Land Use</b>	Surface parking lot	
<b>Urban Design Guidelines District Typology</b>	Campus	
<b>Center Township Land Use Plan</b>	Regional Special Use	
<b>Surrounding Context</b>	<b>Zoning</b>	<b>Land Use</b>
	North: I-3 (RC)	Greenspace
	South: I-3 (RC)	Corporate campus
	East: I-3 (RC)	Surface parking lot
	West: I-3 (RC)	Surface parking lot
<b>Thoroughfare Plan</b>		
Alabama Street	Local Street	48-foot right-of-way existing and proposed
Delaware Street	Primary Arterial	78-foot right-of-way existing and proposed
Henry Street	Local Street	48-foot right-of-way existing and proposed
<b>Site Plan – Submittal Date</b>	File-dated May 9, 2024	
<b>Elevation– Submittal Date</b>	File-dated May 9, 2024	
<b>Hearing Date</b>	June 27, 2024	

### DETAILED SUMMARY OF REQUEST

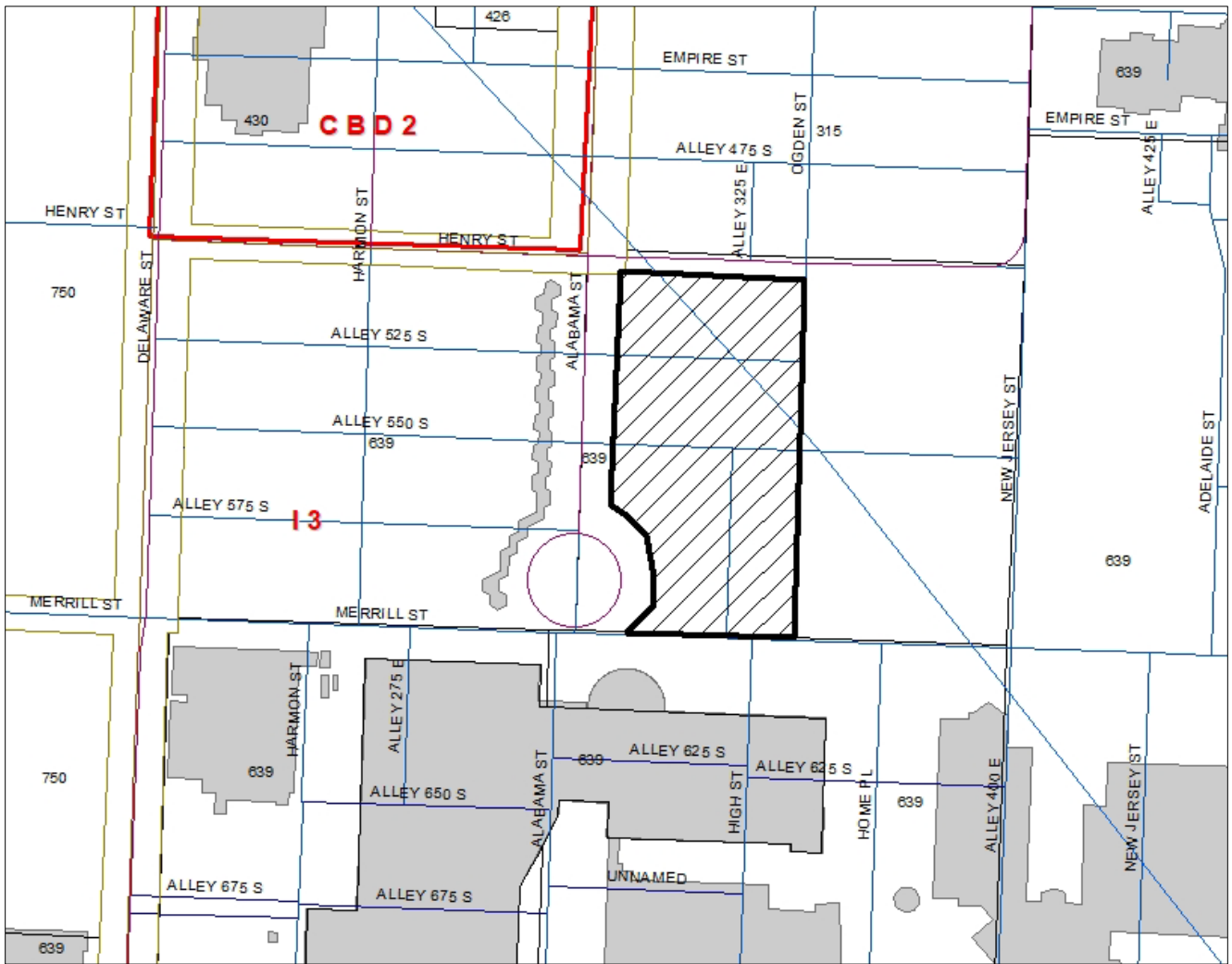
This request would provide for a corporate campus convention center, directly north of a global corporate headquarters office facility. The specific site is a surface parking lot, abutting a private drive circle or ‘round-a-bout’.

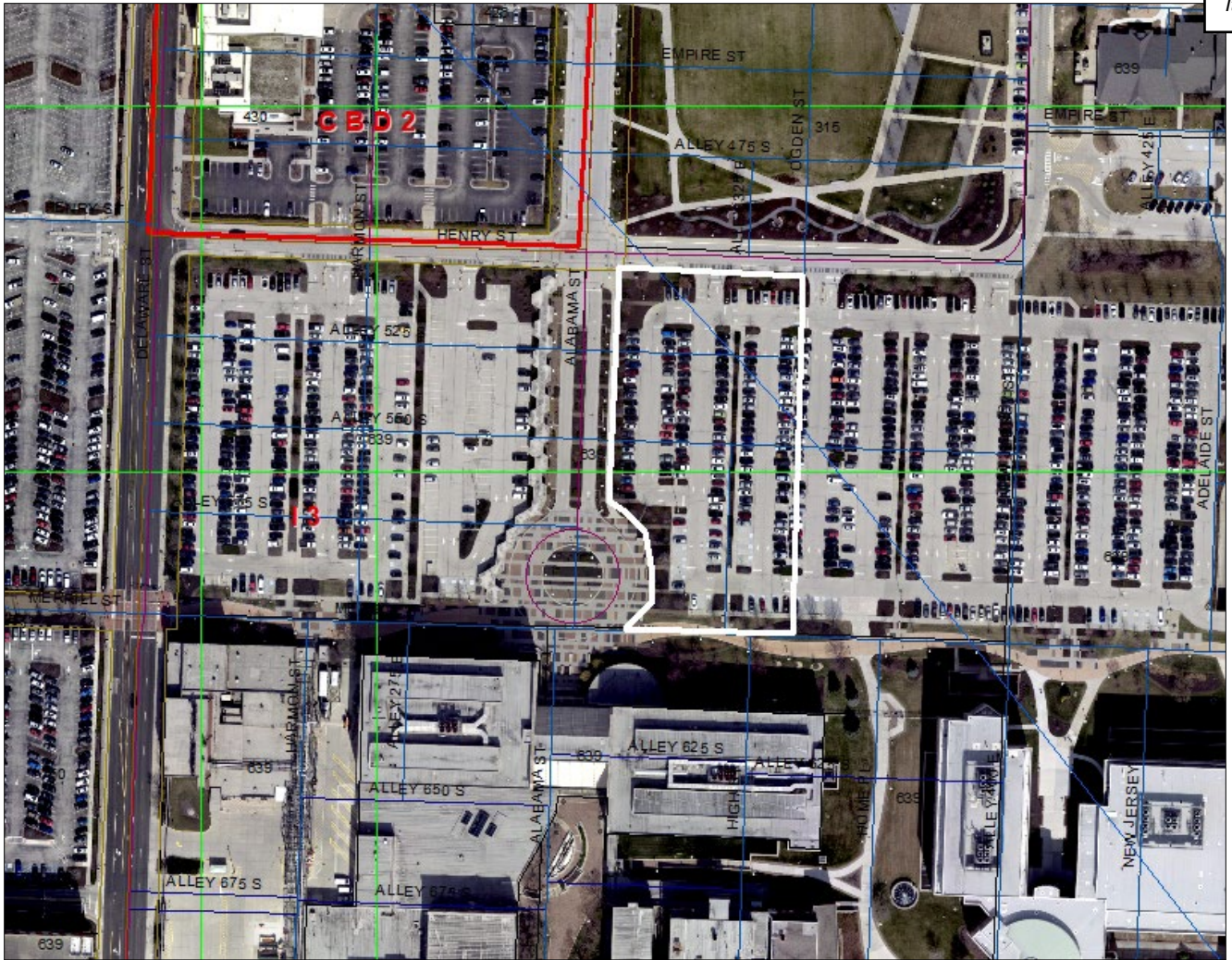
The site area that would be developed is over 140,000 square feet, with a building footprint of 42,038 square feet. The two-story building would be a total of approximately 57,000 square feet. A small surface parking area would be located east of the proposed structure. This parking area would be mostly accessible and electric vehicle parking and security access through a gate would be required.

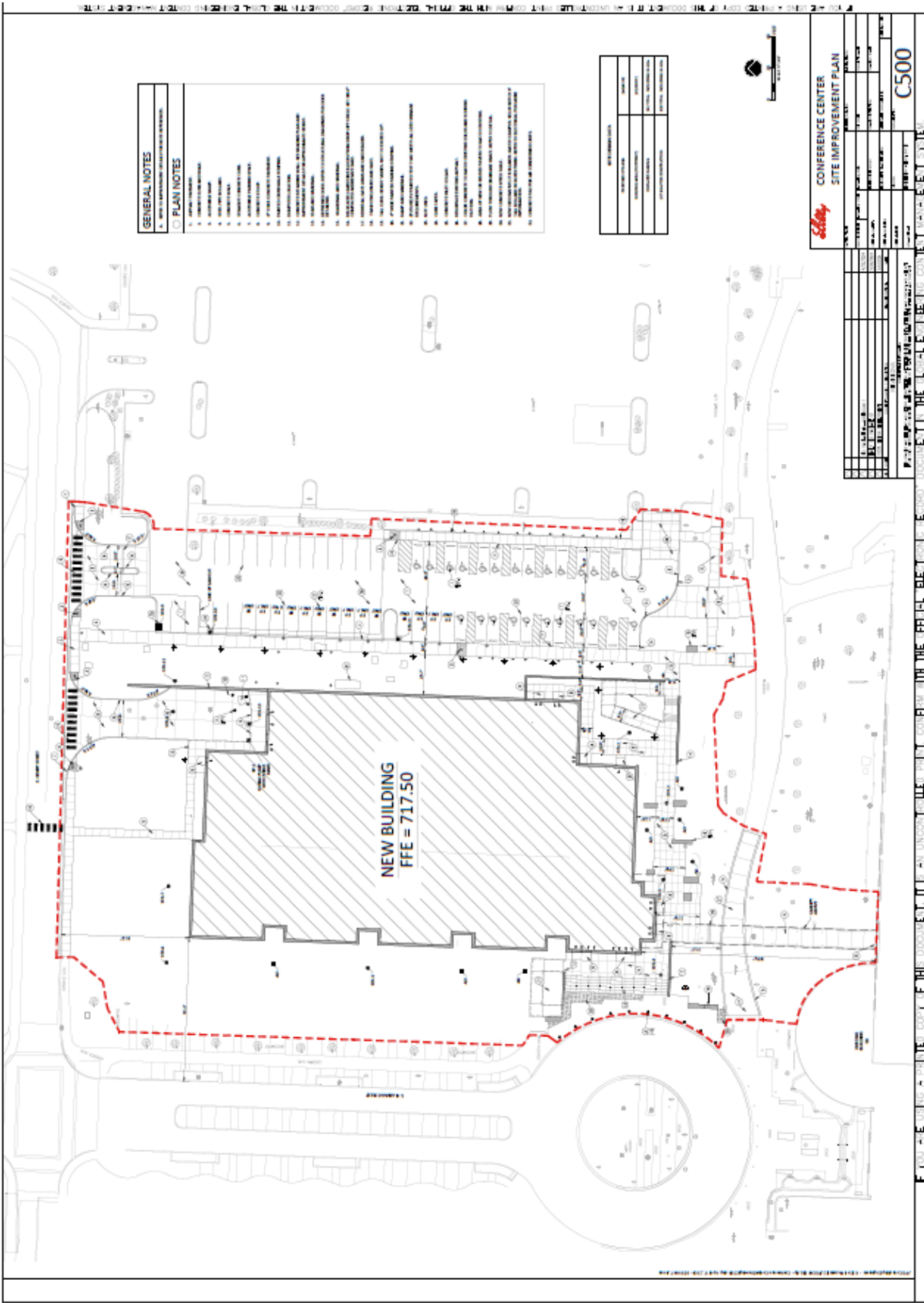
As a result of this structure, 261 parking spaces would be removed from the overall campus parking area. Substantial surface parking would remain for employees and visitors, in addition to several parking garages adjacent to and on the campus.

Building materials include brick, glass, and concrete colors representative of Indiana Limestone. The façade would include a display of building blocks of medicine and molecular proteins. Glazing would allow for natural light into the pre-function and meeting rooms.

A loading area would be contained to an area on the northeast portion of the building, accessed from a vacated portion of Henry Street, east of Alabama Street. The access drive from the private street to the loading dock is shielded from view by a retaining wall and significant landscaping. Additionally, the access drive is reduced at the access point at the street, then widens southward toward the dock, reducing the impact of the dock area.







**GENERAL NOTES**

1. ALL DIMENSIONS SHALL BE IN FEET AND INCHES.
2. ALL DIMENSIONS SHALL BE TO THE FACE UNLESS OTHERWISE NOTED.
3. ALL DIMENSIONS SHALL BE TO THE CENTERLINE UNLESS OTHERWISE NOTED.
4. ALL DIMENSIONS SHALL BE TO THE CENTERLINE UNLESS OTHERWISE NOTED.
5. ALL DIMENSIONS SHALL BE TO THE CENTERLINE UNLESS OTHERWISE NOTED.
6. ALL DIMENSIONS SHALL BE TO THE CENTERLINE UNLESS OTHERWISE NOTED.
7. ALL DIMENSIONS SHALL BE TO THE CENTERLINE UNLESS OTHERWISE NOTED.
8. ALL DIMENSIONS SHALL BE TO THE CENTERLINE UNLESS OTHERWISE NOTED.
9. ALL DIMENSIONS SHALL BE TO THE CENTERLINE UNLESS OTHERWISE NOTED.
10. ALL DIMENSIONS SHALL BE TO THE CENTERLINE UNLESS OTHERWISE NOTED.
11. ALL DIMENSIONS SHALL BE TO THE CENTERLINE UNLESS OTHERWISE NOTED.
12. ALL DIMENSIONS SHALL BE TO THE CENTERLINE UNLESS OTHERWISE NOTED.
13. ALL DIMENSIONS SHALL BE TO THE CENTERLINE UNLESS OTHERWISE NOTED.
14. ALL DIMENSIONS SHALL BE TO THE CENTERLINE UNLESS OTHERWISE NOTED.
15. ALL DIMENSIONS SHALL BE TO THE CENTERLINE UNLESS OTHERWISE NOTED.
16. ALL DIMENSIONS SHALL BE TO THE CENTERLINE UNLESS OTHERWISE NOTED.
17. ALL DIMENSIONS SHALL BE TO THE CENTERLINE UNLESS OTHERWISE NOTED.
18. ALL DIMENSIONS SHALL BE TO THE CENTERLINE UNLESS OTHERWISE NOTED.
19. ALL DIMENSIONS SHALL BE TO THE CENTERLINE UNLESS OTHERWISE NOTED.
20. ALL DIMENSIONS SHALL BE TO THE CENTERLINE UNLESS OTHERWISE NOTED.

**PLAN NOTES**

1. CONCRETE
2. ASPHALT
3. GRAVEL
4. LANDSCAPING
5. CONCRETE
6. ASPHALT
7. GRAVEL
8. LANDSCAPING
9. CONCRETE
10. ASPHALT
11. GRAVEL
12. LANDSCAPING
13. CONCRETE
14. ASPHALT
15. GRAVEL
16. LANDSCAPING
17. CONCRETE
18. ASPHALT
19. GRAVEL
20. LANDSCAPING

NO.	DESCRIPTION	DATE	BY

**CONFERENCE CENTER SITE IMPROVEMENT PLAN**

*Stacy*

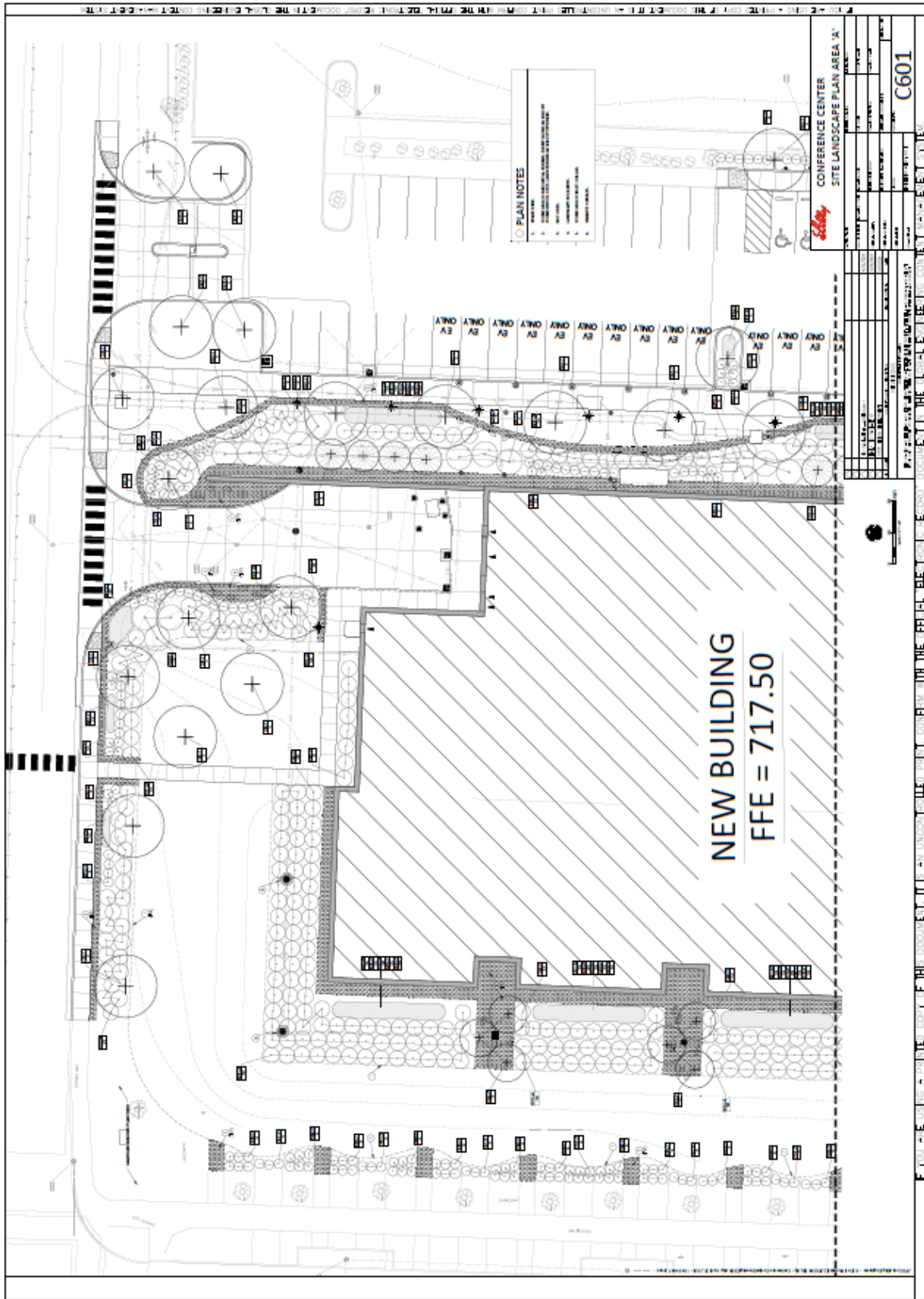
PROJECT NO.	
DATE	
SCALE	
CAD FILE	
DATE PLOTTED	
BY	
CHECKED BY	
DATE CHECKED	
SCALE	
PROJECT NO.	
DATE	
SCALE	
CAD FILE	
DATE PLOTTED	
BY	
CHECKED BY	
DATE CHECKED	

**C500**

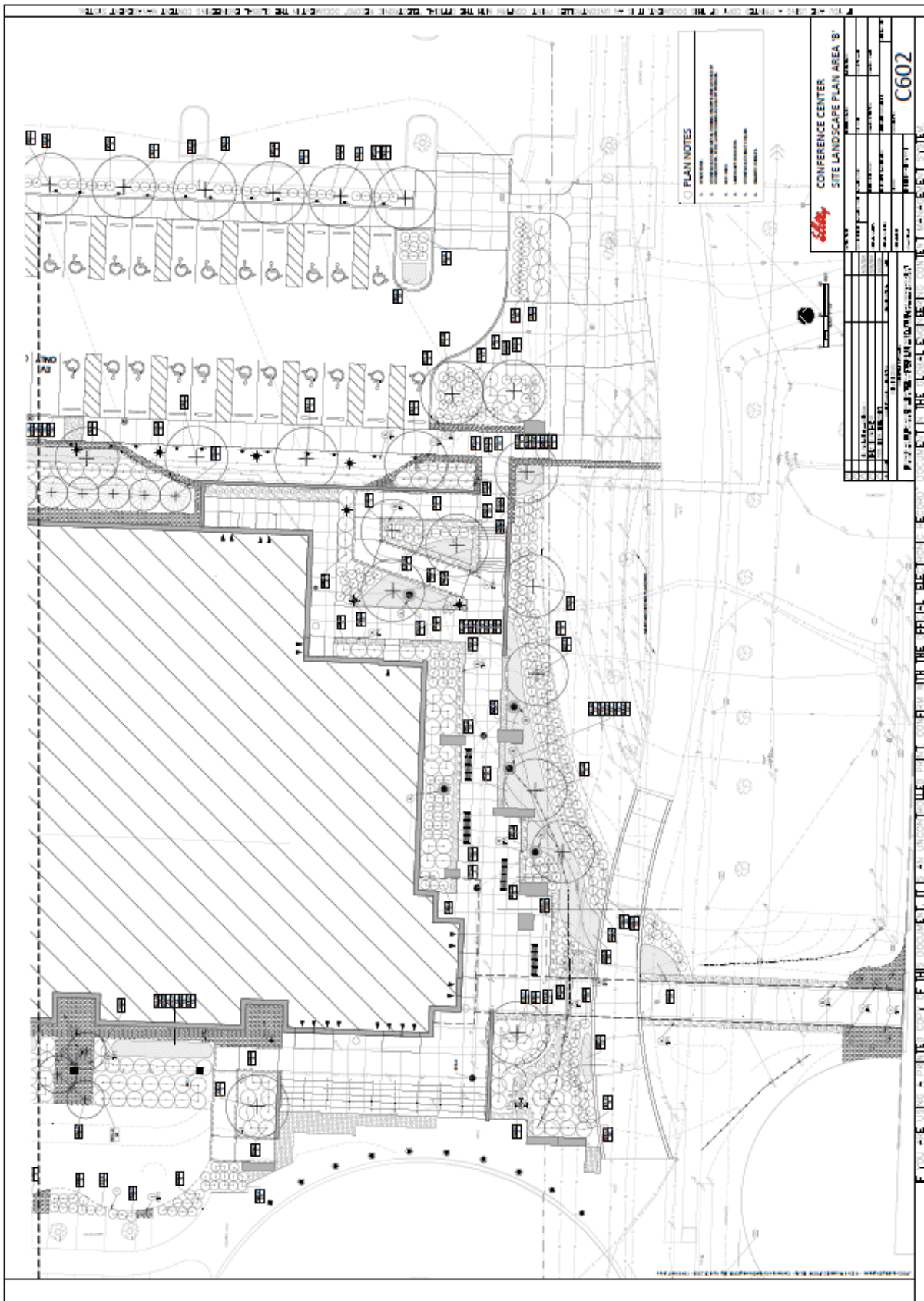
FOR THE RECORD - THE ABOVE INFORMATION IS SUBJECT TO THE TERMS AND CONDITIONS OF THE CONTRACT AND THE CONTRACT DOCUMENTS. THE CLIENT SHALL BE RESPONSIBLE FOR THE ACCURACY OF THE INFORMATION PROVIDED TO THE ARCHITECT.

Site plan





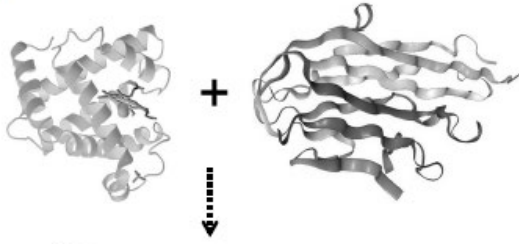
Landscape plan detail area 'A' (north)



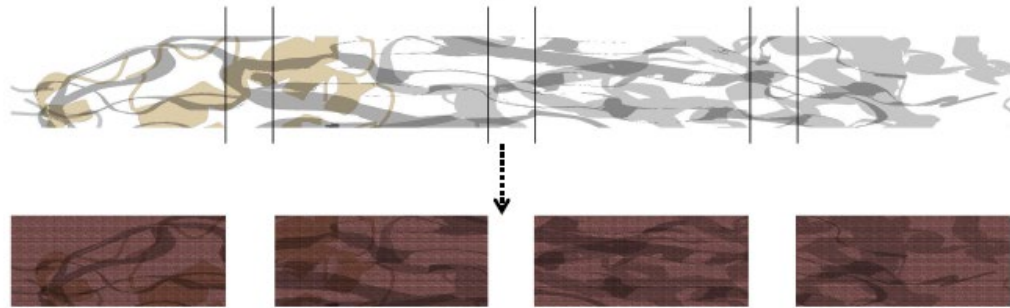
Landscape plan detail area 'B' (south)

# Building Concept Development

Proteins  
Alpha Helices  
and Beta Sheets

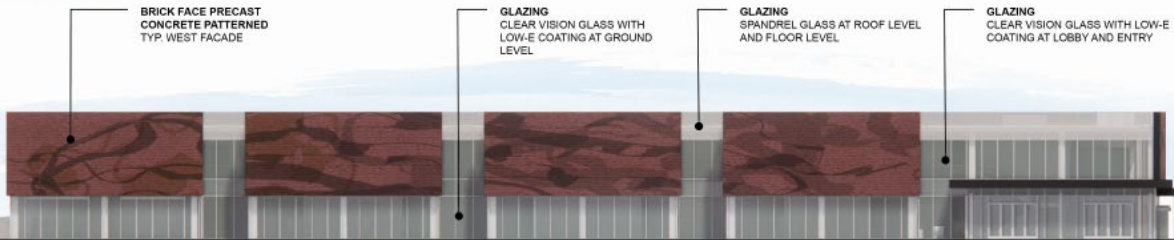


Overlay

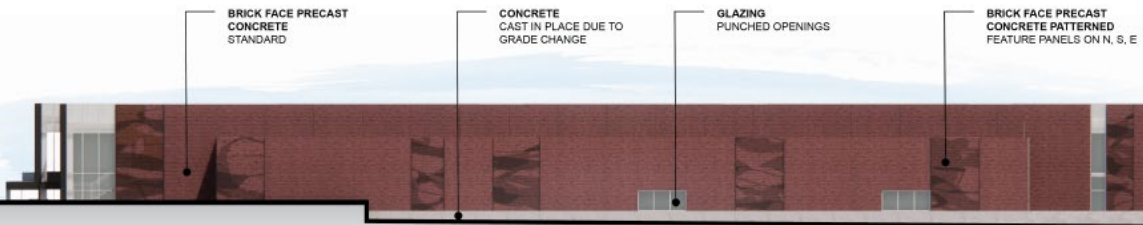


LCC Conference Center | Building Design

## Elevations



WEST ELEVATION



EAST ELEVATION

LCC Conference Center | Building Design



### Elevations



#### NORTH ELEVATION



#### SOUTH ELEVATION

LCC Conference Center | Building Design

### Northwest View



LCC Conference Center | Building Design

**West View**



LCC Conference Center | Building Design

**South View**



LCC Conference Center | Building Design

**Southeast View**



LCC Conference Center | Building Design

**Aerial View (South and West Facades)**



LCC Conference Center | Building Design

**Aerial View (East Facade)**



LCC Conference Center | Building Design

**Aerial View (East and South Facade)**



LCC Conference Center | Building Design

**APPLICABLE DISTRICT TYPOLOGY –** *Typology description directly from the Regional Center Design Guidelines.*

**Campus (C)**

The Campus typology is characterized by a campus-style orientation of buildings, often organized around a central node such as a plaza or open space. The environment is pedestrian in nature and usually master-planned. Parking is clustered in garages, but there may be large surface parking lots at the edges of the development. There is typically a single educational, corporate or government owner. Examples are the Lilly Corporate Center, IUPUI and Medical Center and the Indiana Government Center.

**APPLICABLE GUIDELINES**

**URBAN STRUCTURE (US) GUIDELINES**

*Urban Structure Guidelines relate to large-scale urban design components like viewsheds, landmarks, public spaces and historic resources. Guidelines also relate to historic and current plans for the Downtown area.*

*REQ = Required guideline; ADV = Recommended (Advised) guideline; INFO = Informational; NA = Guideline does not apply.*

<p><b>US1.1 - Consistency with Adopted Plans</b></p>	<p>The Regional Center Zoning Ordinance is the legal basis for the review of development activities in the Regional Center, and the Indianapolis Regional Center Plan 2020 is the legal articulation of the plan components, goals, and standards for the area. The specific guidelines contained in this document are directly related to the implementation of the Indianapolis Regional Center Plan 2020 adopted by the Metropolitan Development Commission. The Indianapolis Regional Center Plan 2020 document contains proposed land use, proposed housing development, pedestrian and bicycle routes, land use framework and other relevant information.</p>	<p>APPRAISAL</p>
<p>REQ</p>	<p><i>US 1.1.1 – Proposals subject to Regional Center review shall be consistent with the following adopted plans, where applicable:</i></p> <ul style="list-style-type: none"> <li>• <i>Indianapolis Regional Center Plan 2020</i></li> <li>• <i>Sixteenth to Thirtieth Street Meridian Street Corridor Land Use Plan</i></li> <li>• <i>Subarea Plans</i></li> <li>• <i>Redevelopment Area Plans</i></li> <li>• <i>Marion County Thoroughfare Plan</i></li> <li>• <i>Indianapolis Regional Pedestrian Plan</i></li> <li>• <i>Indianapolis Metropolitan Planning Area Multi-Modal Corridor and Public Space Design Guidelines</i></li> <li>• <i>Indianapolis Marion County Park, Recreation and Open Space Plan</i></li> </ul>	<p><b>Satisfied</b></p>
<p><b>US1.2 - Boundaries &amp; Edges</b></p>	<p>The mixed-use nature of the Regional Center sometimes produces incompatible land use neighbors, and the incompatible elements should be minimized. Frontage streets and landscaped corridors also function as buffers, boundaries and edges.</p>	<p>APPRAISAL</p>
<p>ADV</p>	<p><i>US 1.2.1 – Buffers consisting of berms, evergreens and/or walls should be constructed in cases where the Indianapolis Regional Center Plan 2020 land use plan indicates residential development or campus development adjacent to industrial development, railroads or Interstates and as the right-of-way or site permits.</i></p>	<p><b>Satisfied</b></p>
<p>NA</p>	<p><i>US 1.2.2 – High- or medium-density development adjacent to, or near to, low-density residential development (6 to 15 Units/Acre and/or 16 to 27 Units/Acre) is to be designed to minimize traffic congestion on local streets, noise, glare and other negative impacts.</i></p>	<p><b>Not Applicable</b></p>

NA	<i>US 1.2.3 – In areas undergoing transformation in land use (such as from industrial to residential), new development should consider the character and impact of existing development. New development should consider mitigating the impacts of existing noise, traffic, service access and other undesirable conditions.</i>	Not Applicable
<b>US1.3 - Viewsheds, Vistas &amp; Landmarks</b>	<p><i>Views of landmark buildings, monuments and plazas and of the downtown skyline are public assets that should be protected. Views of the Soldiers and Sailors Monument, the Capitol Building, the World War Memorial Plaza and the Public Library are the top priorities considered here.</i></p> <p><i>For the purposes of these guidelines protected viewsheds are: (1) Meridian Street from Washington Street to Fall Creek, (2) Market Street from New Jersey Street to Capitol Avenue, (3) Capitol Avenue from Washington Street to Ohio Street, (4) Pennsylvania Street from Ohio Street to St. Joseph Street and (5) Monument Circle.</i></p>	APPRAISAL
NA	<i>US 1.3.1 – Protected viewsheds shall not be obstructed by signs, canopies, awnings, bus shelters, pedestrian bridges, banners, utilities or traffic control signs. A maximum projection of four feet from the property line with a minimum Clear Height Zone of nine feet is not considered to be a visual obstruction.</i>	Not Applicable
REQ	<i>US 1.3.2 – Only deciduous trees are permitted to be planted in the public sphere (right-of-way) or adjacent to the Pedestrian Way.</i>	<b>Satisfied</b>
REQ	<i>US 1.3.3 – Hotels located along protected viewsheds are to develop any covered vehicle “drop off and pick up” areas on side streets. Hotel pedestrian entrance canopies may be permitted along a viewshed because the hotels provide 24/7 sidewalk activity and access. Design must minimize view obstruction, have no side “curtains,” and be of high quality, durable materials. No pull through drop-off permitted along a protected viewshed. Curbside designated areas are permitted if curbside parking restrictions are compatible.</i>	Not Applicable – refers to hotels
<b>US1.4 - Gateways</b>	<i>Gateways create a sense of arrival at a place. They can be (1) transitional corridors such as the West Washington Street corridor adjacent to the Zoo linking the downtown and the west side neighborhoods, (2) a physical element marking a point of transition between districts, such as the Interstate underpasses approaching the downtown or (3) the sequence of views leading to a destination, such as views of the downtown skyline starting at 121st Street when southbound on North Meridian Street.</i>	APPRAISAL
REQ	<i>US 1.4.1 – Existing physical elements in the public sphere, such as bridges and underpasses, are to be designed to be safe for pedestrians, bicycles and vehicles.</i>	<b>Satisfied</b>
ADV	<i>US 1.4.2 – The design of bridges, underpasses and other gateways should incorporate unique lighting, painting, graphics and materials.</i>	None proposed
ADV	<i>US 1.4.3 – All gateway projects that are proposed by “grassroots” initiatives will be reviewed for contextual relationships, durability and cultural relevance to the area.</i>	<b>Satisfied</b>
<b>US1.5 - Public Art</b>	<p><i>Art should be an integral part of infrastructure improvements and new construction. Interactive art, fountains, paving, landscaping, graphics, lighting and sculpture can communicate our culture’s values and create a more vital environment. Art (for the purposes of these guidelines) is defined as original works created by an individual or team that is experienced in their discipline. The following disciplines are included as having the potential for producing original creative works:</i></p> <p><i>(1) Artists - visual arts, performing arts and literary arts,</i>  <i>(2) Craftsmen - glass, metal, weaving, quilting, pottery, etc., or</i>  <i>(3) Design professionals - architecture, landscapes, interiors, engineers, etc.</i></p> <p><i>In general, art is a creative expression by an individual or design team that also ultimately controls the aesthetic outcome.</i></p>	APPRAISAL
ADV	<i>US 1.5.1 – Support for the arts is recommended to be integrated into the design of every new public and new commercial project with a floor area over 50,000 square feet in size or having a construction cost of over \$1,000,000.</i>	<b>Satisfied</b>
ADV	<i>US 1.5.2 – Public Art is recommended to be integrated with all new public institution and government construction projects greater than \$1,000,000 in value. Public Art is art that is located on public property and/or integrated with public construction projects. Public Art can include all forms of original works of art, exterior or interior, which are accessible to the public during normal hours of operation.</i>	<b>Satisfied</b>

REQ	<i>US 1.5.3 – All permanent installations of art located in the Public Sphere or Quasi-Public Sphere shall be constructed of durable materials, not interfere with public safety, and be free of advertising. The installation shall provide access for as many individuals as possible (the provision of access for the mobility, hearing and vision impaired is encouraged), consider public safety and liability issues; consider vehicular and pedestrian traffic patterns; consider the relationship to architectural and natural features, landscape design, environmental impact, and future plans for the area. Petitioners are encouraged to develop a long-term maintenance program for all permanent installations.</i>	<b>Satisfied</b>
REQ	<i>US 1.5.4 – All temporary installations of art shall not interfere with public safety and be free of advertising. Petitioners are encouraged to develop a long-term maintenance program for any such installation that uses recurring temporary or non-durable elements (such as flags or banners).</i>	<b>Satisfied</b>
ADV	<i>US 1.5.5 – Large scale installations of landscaping (environmental art), urban graphics or art consisting of dispersed components are encouraged. Projects will be reviewed for compatibility with these guidelines.</i>	<b>Satisfied</b>

**US1.6 - Festivals, Ceremonies & Parades**      *The Regional Center contains many of the primary festival and celebration spaces in the Central Indiana region, including World War Memorial Plaza, Military Park, Monument Circle, the City Market, White River State Park and the Central Canal Corridor.*      APPRAISAL

ADV	<i>US 1.6.1 – Projects over 150,000 square feet in size should consider developing space for receptions, special events and related activities. The space can be located in the Public, Quasi-public or Private built environment sphere. Ensure that all areas are ADA Accessible.</i>	<b>Satisfied</b>
REQ	<i>US 1.6.2 – Ensure that the responsibility for maintenance of all improvements located in the quasi-public sphere or public sphere is established.</i>	<b>Satisfied</b>

**US2.1 - Historic Districts**      *The Regional Center has many of the most historic resources in the Central Indiana region, and these should be preserved and reinforced. Development in a National Register or locally protected historic district should be contextually sensitive.*      APPRAISAL

REQ	<i>US 2.1.1– In historic districts designated by the National Register of Historic Places (NRHP) that are not designated by the IHPC, new development shall be contextually sensitive to the district. The Infill Housing Guidelines will be used in reviewing single-family proposals in these districts.</i>	<b>Satisfied</b>
-----	--	------------------

**US2.2 - Individual Historic Resources**      *The Regional Center has many of the most historic resources in the Central Indiana region, and these should be preserved and reinforced. Reusing and preserving older buildings provides a unique frame for new development, reinforces our sense of place, and environmental concern for recycling.*      APPRAISAL

REQ	<i>US 2.2.1 – Changes to the exterior of historic resources shall be reviewed for negative effect to the historic character of the building. [See the Guidelines for the General Principles for Historic Preservation.]</i>	<b>Not Applicable – not an historic area or site</b>
REQ	<i>US 2.2.2 – All proposed development which is located on a site that is intersected by a 200 foot buffer around an historic site, as determined to be historic under Guideline US 2.2.1, are to be reviewed for contextual sensitivity. The potential for the reinforcement of exterior space (corridors, plazas, and historic sites), the incorporation and allusion to details in the existing environment, the use of contextual colors and materials, the reinforcing of landscape precedents, the contribution to the social environment and the design response to seasonal change and the day-night cycle will be considered in the design review. This is not meant to restrict creativity, but rather to encourage development that does not destroy or damage those surrounding characteristics that are important and positive. At one end of the spectrum, this may result in new design that is highly reflective of the surrounding built environment, at the other end, it may result in new design that contrasts, but complements the surrounding built environment. In either case, or all cases in between, new design should make a conscious effort to relate in some meaningful way to its surroundings. Where the immediately surrounding built environment is weak or conflicts with the goals of the Regional Center guidelines, one should look beyond the immediate surroundings for context.</i>	<b>Not Applicable – not an historic area or site</b>

<b>US2.3 - “Mile Square” Plan</b>		<i>Indianapolis is a planned city, platted by Alexander Ralston in 1820. This historic plan is highly unique and should be preserved.</i>	APPRAISAL
NA	<i>US 2.3.1 – New development is to be designed to reinforce the original Ralston “Mile Square” Plan. Original rights-of-way are to be retained or restored to preserve the historic character of the “Mile Square.”</i>		Not Applicable
NA	<i>US 2.3.2 – Development of the triangular sites on the diagonal avenues should reflect the site configuration.</i>		Not Applicable
<b>US3.1 - Demolition</b>		<i>Demolitions are necessary for the evolution of the urban environment. Buildings that are functionally obsolete, unsafe or economically obsolete can negatively affect the potential for orderly transition in growth areas. Demolitions must be done in a manner that is supportive of proposed land use, environmental goals, conservation goals and does not significantly impact the community’s cultural heritage preserved in historic buildings. A demolition should be pursued only out of necessity and not simply out of convenience.</i>	APPRAISAL
REQ	<i>US 3.1.1 – Demolition requests shall receive Regional Center Approval prior to issuing a permit. Demolition requests will be reviewed (1) to determine if the structure is in a Redevelopment District or a special economic development district and might be eligible for incentives, (2) to determine if the proposed reuse of the site is consistent with the Indianapolis Regional Center Plan 2020 and/or Redevelopment Plans and (3) to determine if the property is historic (as defined in US2.2.1) so that interested parties may solicit development alternatives.</i>		None proposed

**SITE CONFIGURATION (SC) GUIDELINES**

Site Configuration Guidelines relate to site use, layout and orientation. They guide building uses and orientation, relationships to adjacent development and corridors and the relationship of site components such as open space, parking, access, service delivery and site security.

REQ = Required guideline; ADV = Recommended (Advised) guideline; INFO = Informational; NA = Guideline does not apply.

<b>SC1.1 - Regional Center Plan 2020</b>		The Indianapolis Regional Center Plan 2020 is the guiding document for land use changes in the Regional Center. As part of the Comprehensive Plan for Marion County, it helps to assure orderly development, protect property values and to promote the regional welfare of the city. Development in the Sixteenth to Thirtieth Street Meridian Street Corridor is also subject to Regional Center Zoning review. The Sixteenth to Thirtieth Street Meridian Street Corridor Land Use Plan is adopted as a segment of the Comprehensive Plan and is to be used to guide development in that area.	APPRAISAL
REQ	<i>SC 1.1.1 – Changes in a site’s land use shall be evaluated relative to its primary zoning classification and the recommendations of the Indianapolis Regional Center Plan 2020 or the Sixteenth to Thirtieth Street Meridian Street Corridor Land Use Plan. Changes in or deviations from a site’s primary zoning shall be as recommended in the Indianapolis Regional Center Plan 2020 or the Sixteenth to Thirtieth Street Meridian Street Corridor Land Use Plan.</i>		Satisfied
<b>SC1.2 - Mixed-Use Development</b>		The Regional Center is a dynamic urban environment where live, work and play space is intimately related. Buildings should be mixed-use in character to reinforce this environment and to spread economic viability over several categories of markets.	APPRAISAL
NA	<i>SC 1.2.1 – New development and changes in use in areas proposed as High-Density Mixed-Use, Medium-Density Mixed-Use, and Research Community Mixed-Use in the Indianapolis Regional Center Plan 2020 are to have multiple uses in each building or multiple uses controlled by a single development entity. In buildings that are designed primarily for a single use, such as garages or office buildings, highly active grade level uses such as retail, restaurants, cafeterias, lobbies, security and other similar uses will be considered as mixed-use.</i>		Not Applicable
<b>SC1.3 - Grade Level Use</b>		Pedestrian activity is encouraged in the Regional Center, and this activity is encouraged both by the presence of pedestrian facilities like sidewalks as well as by the environment through which the pedestrian passes. An active grade level street front is encouraged.	APPRAISAL



NA	<i>SC 1.3.1 – In areas proposed as High-Density Mixed-Use, Medium-Density Mixed-Use and Research Community Mixed-Use in the Indianapolis Regional Center Plan 2020, all grade level uses shall be designed to activate the adjacent pedestrian ways. Retail, restaurant and commercial uses are encouraged. Exhibit windows and public art may also be acceptable for areas where retail and commercial uses are not currently feasible.</i>	Not Applicable
REQ	<i>SC 1.3.2 – Some or all activity areas of corporate, educational and institutional buildings should be highly visible and located at the grade level. Examples of such activity areas include food services, show rooms, meeting rooms, security offices, exercise rooms and other support functions. Special uses, such as places of worship, court buildings and sports arenas are exempt from this guideline.</i>	<b>Satisfied</b>
<b>SC1.4 - Outdoor Living Space</b>		APPRAISAL
REQ	<i>SC 1.4.1 – New residential development including conversions of existing buildings with more than ten units shall provide 32 square feet of usable outdoor, tenant/owner accessible, plaza space per unit. This area should be designed for active use by residents, and may be associated with outdoor common areas associated with the entry, in a rooftop zone, adjacent to a pedestrian way or adjacent to a parking zone. It shall contain benches, paving, screening, lighting and landscaping. This requirement may be waived if public park, trail or plaza space is within 400 feet (linear along the public sidewalk or pedestrian way) of the primary entrance or if private patios, porches and/or balconies provide at least 32 square feet of usable space for each unit. This requirement will not be applicable to a project that involves the conversion or reuse of an existing building when conditions prevent implementation.</i>	<b>Not applicable - refers to residential development</b>
<b>SC2.1 - Environmental Site Context</b>		APPRAISAL
REQ	<i>SC 2.1.1 – The design, character, grade, location, and orientation of all uses is to be appropriate for the uses proposed, logically related to existing and proposed topology, and other conditions.</i>	<b>Satisfied</b>
REQ	<i>SC 2.1.2 – Development adjacent to a public waterway or public greenway shall not prohibit or substantially hinder public access to such features.</i>	Not proposed
INFO	<i>SC 2.1.3 – Development regulations established by wellfield protection districts, adjacency to waterways or flood hazards, air space districts, and other environmental regulations may require deviation from some guidelines. Petitioner is to provide documentation for any requested exemption of these guidelines because of such regulations.</i>	Information
<b>SC2.2 - Site Circulation Context</b>		APPRAISAL
REQ	<i>SC 2.2.1 – New development proposals shall not (1) in cases where public right-of-way is proposed to be vacated, isolate or reduce access to nearby sites, (2) in situations where there are multiple public street frontages, create a “back door” image by placing service or security systems exclusively on one frontage and (3) reduce the alternative routes available to accommodate traffic, service access and to provide emergency access in the vicinity of the site.</i>	<b>Satisfied</b>
ADV	<i>SC 2.2.2 – Primary pedestrian access to the site is to be from the public pedestrian way. However, additional pedestrian connections are also encouraged to be made in non-public right-of-way from one site to another.</i>	<b>Satisfied</b>
<b>SC2.3 - Orientation</b>		APPRAISAL
NA	<i>SC 2.3.1 – The lower two levels of the primary facade zone of a building, is to be built to minimum height of 26 feet along the front property line(s) and is to be increased in height at a ratio of one foot vertical for each three feet horizontal if the building facade is set back from the property line. Grade level uses shall be designed to relate to the public pedestrian way and the street grid. The minimum height of 26 feet shall be exclusive of sloped roof forms.</i>	Not Applicable

NA	SC 2.3.2 – Levels above the second floor (or above a height of 26 feet) may be oriented to relate to views, daylight, and/or energy conservation.	Not Applicable
REQ	SC 2.3.3 – In all areas with recommended land use of Residential 6-15 units per acre, buildings shall be set back consistent with the “established setback” of adjacent buildings. Major structures related to parks, plazas, monuments, churchyards and other formal, site-related elements shall not be construed to establish setback requirements.	Not Applicable – recommended for Regional Special Use development
NA	SC 2.3.4 – In areas where High-Density Mixed-Use, Medium-Density Mixed-Use, and Research Community Mixed-Use land use are proposed by the Indianapolis Regional Center Plan 2020, and when the existing right-of-way is a minimum of 90 feet, buildings, shall be a minimum of 26 feet in height and shall be built to the property line on all sides abutting public streets. All streets in the Mile Square have 90 foot or greater rights-of-way. Along all primary and secondary arterial street corridors (as listed in the Official Thoroughfare Plan) with a right-of-way less than 90 feet, buildings shall be a minimum of 26 feet in height and shall be built to a line that is 45 feet from the centerline of the street, on all sides abutting public streets. The additional setback in these locations will enable the provision of bus shelters, deliveries, improved sidewalks, landscaping, improved vehicular circulation, curbside drop-off/pick-up and/or other assets. The following local/collector streets are to be treated as arterial streets: (1) North Alabama Street from St. Clair Street to North Street, (2) North Belmont Avenue from White River Parkway West Drive to West 10th Street, (3) Fletcher Avenue from Calvary Street to South Shelby Street, (4) Ft. Wayne Avenue from East 10th Street to Alabama Street, (5) West Merrill Street from Kentucky Avenue to South Missouri Street, (6) North Pershing Avenue continuation of White River Parkway West Drive to West 16th Street, (7) Riverside Drive East from Waterway Boulevard to West 16th Street, (8) St. Clair Street from Indiana Avenue to Ft. Wayne Avenue, (9) Waterway Boulevard from Indiana Avenue to Riverside Drive East, (10) White River Parkway West Drive from West Michigan Street to North Pershing Avenue, and (11) Milburn Street from Indiana Avenue to West 16th Street.	Not Applicable
ADV	SC 2.3.5 – Entry plazas, colonnades, programmed outdoor space and sidewalk circulation related development may be permissible in establishing the build-to line referenced in SC 2.3.1 and SC 3.2.4.	Satisfied

Item 2.

SC2.4 - Site Utilization, Maintenance & Safety		APPRAISAL
	The urban environment is a mix of public, quasi-public, and private uses and users, and sites should be designed to improve utilization, maintenance and safety.	
REQ	SC 2.4.1 – Sites shall be designed to clearly define proposed site utilization and treated accordingly. The private sphere (tenant/owner private space) may be secured and/or treated as quasi-public space. Guest and visitor quasi-public space is to be supervised, lighted, landscaped and clearly marked. Publicly accessible space in the quasi-public sphere is to be treated compatibly with the street and pedestrian way treatment. When establishing any quasi-public sphere zone, ensure that the ownership/maintenance of that zone is arranged prior to opening up such a space to the public.	Satisfied
REQ	SC 2.4.2 – Portions of the site which are “leftover” such as: (1) weed lines in the space between the fence and the alley, (2) spaces between closely adjoining buildings, (3) offsets and notches at the base of the building and (4) emergency egress and loading areas, shall be designed to require low maintenance.	Satisfied
REQ	SC 2.4.3 – Each public right-of-way frontage with secured fenced or walled areas shall have at least one access gate per frontage to encourage owner maintenance and litter removal.	Satisfied

<b>SC2.5 - Adaptability</b>		Buildings inevitably undergo change as economic conditions change. Buildings should be designed from the beginning to maximize their adaptability to different configurations and uses. Buildings that are difficult to adapt often fall into blight and have negative impacts on surrounding properties.	APPRAISAL
NA	SC 2.5.1 – <i>New development that has “zero lot line” side yards abutting existing development is to be designed so that floor heights align on as many floors as possible. At a minimum, the grade level and one additional level must be aligned with adjoining buildings.</i>	Not Applicable	
ADV	SC 2.5.2 – <i>Commercial and institutional buildings should be designed to accommodate change associated with new technologies, future needs of owners and potential reuse.</i>	<b>Satisfied</b>	
NA	SC 2.5.3 – <i>All new development, including parking structures, in areas identified by the Indianapolis Regional Center Plan 2020 as High-Density Mixed-Use, Medium-Density Mixed-Use, and Research Community Mixed-Use, shall be designed and constructed with provisions for active grade level uses adjacent to pedestrian ways.</i>	Not Applicable	
<b>SC2.6 - Building Access</b>		As the center of the Central Indiana region and a destination for visitors from all over, the Regional Center built environment must enhance wayfinding.	APPRAISAL
REQ	SC 2.6.1 – <i>The primary pedestrian access to a building should be easily identifiable and directly from the public pedestrian way. In no case shall primary access across a parking zone be permitted. In situations where the primary pedestrian access to a building is not directly on the public pedestrian way, landscaped pedestrian corridors or plazas shall link entrances directly to the primary pedestrian way serving the use.</i>	<b>Satisfied</b>	
<b>SC3.1 - Zoning Required Parking</b>		Each Primary Zoning classification sets forth requirements for parking. However, in the Regional Center, policies to diminish the amount of land devoted to the automobile and to encourage multi-modal transportation should be employed. Parking shall be provided as specified in the primary zoning ordinance. On-street parking, shared parking and commercial parking availability may be considered in granting variances. Existing parking located on the same parcel as new development shall be upgraded to meet all development standards and these Guidelines when there is a greater than 15 percent change in the number of parking spaces. Existing parking that will serve the new development and that is located on other parcels that are unaffected by the new development will not require Regional Center Approval.	APPRAISAL
ADV	SC 3.1.1 – <i>Surface parking lots are discouraged. Site related constraints that result from existing building configurations and/or that relate to small unbuildable parcels and/or that are 20 or less parking spaces in size will be taken into consideration in the review of proposed surface parking. Surface parking that is proposed as part of a master plan to achieve ultimate density recommendations will be permitted.</i>	<b>Satisfied</b>	
ADV	SC 3.1.2 – <i>Parking structures are encouraged in order to increase the density of Regional Center uses.</i>	<b>Satisfied, with existing structures</b>	
INFO	SC 3.1.3 – <i>In order to support growth in the use of mass transit and to increase density, development located in the CBD 1 or CBD 2 Zoning Districts and also located in the Mile Square, and all development located in the CBD 3 Zoning District is not required to provide parking.</i>	Information	
<b>SC3.2 - Surface Parking</b>		Each Primary Zoning classification sets forth requirements for parking. However, in the Regional Center, policies to diminish the amount of land devoted to the automobile and to encourage multi-modal transportation should be employed. Parking shall be provided as specified in the primary zoning ordinance. On-street parking, shared parking and commercial parking availability may be considered in granting variances. Existing parking located on the same parcel as new development shall be upgraded to meet all development standards and these Guidelines when there is a greater than 15 percent change in the number of parking spaces. Existing parking that will serve the new development and that is located on other parcels that are unaffected by the new development will not require Regional Center Approval.	APPRAISAL
ADV	SC 3.2.1 – <i>Surface parking lots are discouraged. Site related constraints that result from existing building configurations and/or that relate to small unbuildable parcels and that are 20 or less parking spaces in size will be taken into consideration in the review of proposed surface parking. Surface parking that is proposed as part of a master plan to achieve ultimate density recommendations will be permitted.</i>	<b>Satisfied</b>	

REQ	SC 3.2.2 – New or substantially reconstructed surface parking areas shall be designed considering visibility and safety. They shall also be screened permeably from public rights-of-way and pedestrian ways.	Satisfied
REQ	SC 3.2.3 – When surface parking is provided with new construction locate the parking area to the rear or to the side to allow the building facade to front the pedestrian way.	New construction portion – Satisfied
REQ	SC 3.2.4 – Provide accessible walkways for pedestrians from the parking lot area connecting to the public pedestrian way.	Satisfied
ADV	SC 3.2.5 – Design parking areas to facilitate back-in parking to improve driver vision and safety.	Satisfied
ADV	SC 3.2.6 – Provide bio-swailes at regular intervals to reduce the heat island effect and improve storm water management as well as provide places for snow storage during the winter.	None proposed

<b>SC3.3 - Parking Structures</b>	The density of the Regional Center necessitates the use of parking structures. Such structures should, however, be treated as buildings that contribute to the surrounding area and not simply utilitarian structures.	APPRAISAL
-----------------------------------	--	-----------

REQ	SC 3.3.1 – All structured parking fronting on public pedestrian ways shall have the grade level designed to accommodate active uses that generate pedestrian activity, such as retail shops, restaurants, business services and offices.	None proposed
REQ	SC 3.3.2 – Generally the exterior facade of garages visible from the public right-of-way shall be designed to reflect a dominant rectilinear pattern. Exposed sloped ramps often conflict contextually. If sloped parking decks are desired, they should be placed behind a rectilinear pattern facade.	None proposed
REQ	SC 3.3.3 – Parking structures shall have an articulated façade as if they were an active building. Complete facades with contextually-patterned openings and materials attached to the superstructure (posts and beams) are preferred. Superstructure elements (posts and beams) may form portions of the facade if they incorporate substantial decorative castings and patterns.	None proposed
ADV	SC 3.3.4 – New parking structures serving new development should be integrated with the design of the primary building. Consistency of materials, pattern, grade level development and signage is encouraged. When existing parking structures are used to support new development they should be improved to include consistent signage, lighting, security and landscape features.	None proposed
REQ	SC 3.3.5 – Automobiles and glare from headlights shall be screened from view from the public right-of-way.	Satisfied
REQ	SC 3.3.6 – Exits and entrances shall be designed to minimize pedestrian conflicts. When the right-of-way permits, alley access and parking structures located in the interior of the block are encouraged.	Satisfied

<b>SC3.4 - Access to Parking</b>	Parking must be accommodated and must be easily located. However, it must also not detract from the urban environment.	APPRAISAL
----------------------------------	--	-----------

ADV	SC 3.4.1 – Grade level parking facing the perimeter of the block is discouraged.	Satisfied
REQ	SC 3.4.2 – Parking lot screening is required if parked vehicles are visible from a public street or pedestrian way. It shall be designed to be permeable, considering visibility and safety.	Satisfied
ADV	SC 3.4.3 – Entrances to parking areas should be designed for their intended audience. Public entrances should have a higher-profile entrance than an entrance to a restricted parking area.	Satisfied
ADV	SC 3.4.4 – When the right-of-way permits, alley access and parking in the interior of the block is encouraged.	None proposed
NA	SC 3.4.5 – Commercial convenience drive-thru pick-up windows are permitted only when not located facing a public street (public right-of-way that is greater than 40 feet in width). High-density and medium-density residential development (as defined by the Indianapolis Regional Center Plan 2020) may provide convenience drop-off and pick-up improvements for residents. The improvements shall not reduce or impede pedestrian or vehicular effectiveness.	Not Applicable

SC4.1 - Construction Site Control	<p>The density of the Regional Center provides all sites with a significant public profile. Construction sites should remain clean and secure and mitigate impacts on surrounding buildings or activities.</p> <p>The public right-of-way shall be maintained clear and free of construction materials, debris, gravel and dust at all times unless a permit has been issued for use of such right-of-way and the construction has been appropriately secured.</p>	APPRAISAL
REQ	<p>SC 4.1.1 – Construction sites shall be fully secured. Construction fences may have creative artwork or informational material specifically about the project under construction. Chain link fencing will be allowed along a pedestrian way to secure a site during construction provided it is covered with canvas or a similar material which may display artwork or informational material specifically about the project under construction.</p>	Satisfied
REQ	<p>SC 4.1.2 – All barriers and alternative pedestrian routes shall be compliant with Americans with Disabilities Act (ADA) standards.</p>	Satisfied
REQ	<p>SC 4.1.3 – Protected pedestrian passageways (ADA compliant) shall be provided when a sidewalk needs to be closed for more than 72 hours because of maintenance activities or new construction. Continued use of vehicular, bicycle and pedestrian modes of transportation shall be provided for during the construction period.</p>	Satisfied
SC4.2 - Service & Delivery Access	<p>Service access to buildings in the Regional Center should balance logistical convenience and the desire to maintain design integrity, public safety, and the pedestrian experience.</p>	APPRAISAL
REQ	<p>SC 4.2.1 – All service and delivery access shall be on site and fully screened, contained within the building, or located below grade and accessible from the alley when alleys serve the site.</p>	Satisfied
REQ	<p>SC 4.2.2 – No trash dumpsters shall be placed directly adjacent to a pedestrian way.</p>	Satisfied
SC4.3 - Security Fencing, Walls & Barriers	<p>In some circumstances security fencing and/or barriers are required for site control. Public sidewalks, alleys and other areas outside of the fence are areas where weeds and litter frequently accumulate.</p>	APPRAISAL
REQ	<p>SC 4.3.1 – Permanent security fencing shall be designed to enhance the building design.</p>	Satisfied
REQ	<p>SC 4.3.2 – No chain link fencing is to be visible from a sidewalk or pedestrian way.</p>	None proposed
REQ	<p>SC 4.3.3 – No barbed wire or razor wire is permitted.</p>	None proposed
REQ	<p>SC 4.3.4 – Each public right-of-way frontage with secured fenced or walled areas shall have at least one access gate per frontage to encourage owner maintenance and litter removal.</p>	Satisfied
REQ	<p>SC 4.3.5 – Vehicle security barriers or planters are to be designed into the site, and all pedestrian ways must remain Americans with Disabilities Act (ADA) accessible. New development is encouraged to use site design (such as raised steps or planting beds) in lieu of individual security barriers or planters.</p>	Satisfied

## MASSING AND DENSITY (MD) GUIDELINES

Massing & Density Guidelines relate to general building form, such as building bulk and density.

REQ = Required guideline; ADV = Recommended (Advised) guideline; INFO = Informational; NA = Guideline does not apply.

MD1.1 - Massing	<p>Viewsheds, sight lines, landmark buildings and monuments and other larger-scale urban design elements are public assets that development should enhance and protect.</p> <p>Also refer to CBD Zoning Ordinance “Sky Exposure Plane” requirements.</p>	APPRAISAL
ADV	<p>MD 1.1.1 – New development is to be designed to maximize sight lines to and from the development. The design should provide viewing opportunities from the building of the sidewalk, public areas, and landmarks, as well as incorporate building elements which assist in wayfinding. Balconies, rooftop gardens, courtyards, large windows, grade level visibility, glass elevators, high-rise lobbies with exterior views and public observation decks are encouraged.</p>	Satisfied

ADV	MD 1.1.2 – The impact of shadows, glare, and “wind tunnels” shall be considered in the design of landscaping and site improvements.	Satisfied
REQ	MD 1.1.3 – Views of landmarks, respect for identified Viewsheds, enhanced wayfinding and enhanced pedestrian circulation are to be identified and documented with the plans submitted.	Satisfied
ADV	MD 1.1.4 – The corners of buildings located at the intersection of two streets should be emphasized in order to create identity, take advantage of the high visibility and enhance wayfinding.	Satisfied
NA	MD 1.1.5 – New structures shall not cast shadows on the south quadrant of the upper plaza (grade plus 20 feet and 100 feet in diameter) of the Soldiers and Sailors Monument between the hours of 10:00 AM solar time and 2:00 PM solar time, from February 21 through October 21. This limitation considers the Azimuth, Altitude and the Intercept created by the 150 foot permissible height for structures located on Monument Place. During Daylight Savings Time the area is protected from 11:55 AM to 3:55 PM clock time. It shifts back one hour during Eastern Standard Time.	Not Applicable

**MD2.1 - Density** While a variety of densities are present in even the densest of cities, it is recognized that as the center of the Central Indiana region, low-density, suburban-style development is a detriment to the promotion of pedestrian activity and to the overall economic vitality of the Regional Center. APPRAISAL

NA	<p>MD 2.1.1 – Regional Center Floor Area Ratios (RCFAR) shall be met in accordance with the following:</p> <p>High-Density Mixed-Use: 4:1 and greater;          Medium-Density Mixed-Use: 2:1 and greater;          Research Community: 1.5:1 and greater.</p> <p>Floor area data by level and use must be provided. In situations where development is proposed to be phased over a period of time greater than five years, a master plan showing phasing is to be submitted. The first phase of the proposed development shall conform to Guideline SC2.6.1: Building Access.</p>	Not Applicable
----	---	----------------

**CHARACTER AND APPEARANCE (CA) GUIDELINES**

Character & Appearance Guidelines relate to the look and performance of buildings and related elements. They provide guidance on architectural style, individual building components and materials, exterior user amenities and environmental performance.

REQ = Required guideline; ADV = Recommended (Advised) guideline; INFO = Informational; NA = Guideline does not apply.

**CA1.1 - Regional Center Zoning Ordinance** The Regional Center Zoning Ordinance, as amended, is the guiding legal ordinance and sets forth general design parameters. APPRAISAL

INFO	CA 1.1.1 – All new development or change of use, signage, building facade treatment, street furnishings and landscaping within the right-of-way, landscape treatment on the site, development intensity and massing of structures shall be so designed to be in conformity with the Indianapolis Regional Center Plan 2020 and Regional Center Zoning Ordinance.	Information
------	--	-------------

**CA1.2 - Style** The Regional Center is a dynamic place where each generation expresses itself through the built environment. The architectural style of a building should reflect the time in which it was constructed, but should also be respectful of surrounding styles. APPRAISAL

ADV	CA 1.2.1 – <i>New design should make a conscious effort to relate in some meaningful way to its surroundings. The potential for the reinforcement of exterior space (corridors, plazas and historic sites), the incorporation and allusion to details in the existing environment, the use of contextual colors and materials, the reinforcing of landscape precedents, the contribution to the social environment and the design response to seasonal change and the day-night cycle will be considered in the design review. This may result in new design that is reflective of the surrounding built environment, or it may result in new design that contrasts but complements the surrounding built environment.</i>	<b>Satisfied</b>
ADV	CA 1.2.2 – <i>Buildings should be designed as a whole and in general should not attempt to mix diverse architectural styles.</i>	<b>Satisfied</b>
ADV	CA 1.2.3 – <i>Literal replication of historic styles is strongly discouraged.</i>	<b>Satisfied</b>
NA	CA 1.2.4 – <i>Low- and medium-density franchise or corporate design is discouraged. Buildings should be designed to relate to their context.</i>	Not Applicable
<b>CA1.3 – Theme</b>	Most urban areas have very distinct districts that are identified by a unique architectural style, streetscape or other physical design. The identity of such districts should be enhanced in the Regional Center.	APPRAISAL
ADV	CA 1.3.1 – <i>Historic themes and district themes related to documented initiatives (such as designated Cultural Districts) are encouraged to be promoted in site and building design. Petitioner shall cite the initiative and their design response.</i>	<b>Satisfied</b>
NA	CA 1.3.2 – <i>Significant structures that contribute to the overall form of the Regional Center, such as buildings over 20 stories high, sports and entertainment venues and public buildings, will be reviewed in the broader context of the entire Regional Center.</i>	Not Applicable
<b>CA2.1 – Facade Character</b>	The facades of buildings are one of the most important contributors to the urban environment. From the interaction with a building at the pedestrian level to the appearance of skyscrapers from a distance, building facades contribute significantly to the character of the Regional Center.	APPRAISAL
REQ	CA 2.1.1 – <i>All new buildings shall have a cohesive architectural treatment on all facades as well as on any solid screening elements such as walls. The colors, patterns and quality of materials shall create a unified building form. In situations where there are “zero lot lines” the sides and rear of buildings may conform to the dominant contextual precedent. This guideline is not intended to prohibit variation in the facade treatment that sensitively responds to context, to building code requirements, to service access or to limit the variation in façade design that is large in scale and forms the wall(s) of exterior spaces.</i>	<b>Satisfied</b>
ADV	CA 2.1.2 – <i>The facades of buildings shall be designed to have three-dimensional interest. Transparent facade treatment may be used. Flat and minimally textured facades are discouraged.</i>	<b>Satisfied</b>
NA	CA 2.1.3 – <i>In new commercial buildings a minimum of forty percent of the length of the grade level facade, adjacent to the pedestrian way, shall be glazed between two feet and eight feet above grade. In situations where tenants require wall space, the back of shelving may be set back a minimum of two feet and displays placed in the window areas. This guideline is intended to encourage occupant interaction with exterior space, in order to engender “natural surveillance” and social interaction.</i>	Not Applicable
NA	CA 2.1.4 – <i>At the grade level, adjacent to pedestrian ways, glass and/or other glazing materials shall have high transmissivity of visible light and low reflectivity qualities. The percent of visible light transmitted less the percent reflected shall be no less than 59 percent. For example: (1) Clear monolithic uncoated laminated glass transmits 86 percent and reflects 8 percent for a net factor of 78 percent and (2) Aqua-green low reflectivity glass transmits 66 percent and reflects 7 percent for a net factor of 59 percent.</i>	Not Applicable

ADV	CA 2.1.5 – <i>The articulation of openings, roof line, base and materials should be designed to protect materials from staining. Care should be taken in the detailing of water run-off, use of untreated ground water, use of porous materials, and also the use of copper, core-ten steel or other oxidizing metals. The impact of starling and pigeon roosting habits should also be considered and discouraged adjacent to pedestrian ways and balconies. Such birds prefer to roost on flat ledges or crevices that offer protection from the elements.</i>	<b>Satisfied</b>
REQ	CA 2.1.6 – <i>When a new project requires that an opaque wall or fence be constructed adjacent to the public sidewalk or pedestrian way, the design shall incorporate features to provide visual interest at a minimum of 30 foot intervals. A thirty foot long expanse would require no features and a 40 foot long expanse would require a minimum of two features. Permanently installed landscape, lighting features, public art, windows and cutouts may be used to create interest. When “new tenant” leasehold improvements are made in existing buildings this guideline applies only to the new construction.</i>	<b>Satisfied</b>

<b>CA2.2 – Materials</b>	Technological advancements have produced a palette of facade materials that varies drastically from the relatively limited palette of the past. A limited palette produced districts with uniform character and appearance, and modern materials should be used to create a similar result. These guidelines are directed toward creating an overall urban fabric with a strong sense of place that reinforces the definition of corridors (such as Meridian Street, the Canal and Mass Avenue) and places (such as University Park and Monument Circle.)	APPRAISAL
--------------------------	---	-----------

REQ	CA 2.2.1 – <i>Materials shall be compatible with the Regional Center urban environment in durability, color, texture and use. Examples of current materials include red to brown tone brick, buff tone brick, limestone, granite, low reflectivity glass, metal frames, concrete and metal panels. Projects should be constructed to be as maintenance free as possible.</i>	<b>Satisfied</b>
ADV	CA 2.2.2 – <i>Contrasting, bright colors and light may be used (on less than five percent of facade) for design accent and building identification.</i>	<b>Satisfied</b>
REQ	CA 2.2.3 – <i>Only in residential situations where context permits shall wood siding or cedar shakes be permitted as the primary cladding material.</i>	None proposed
REQ	CA 2.2.4 – <i>Mirrored glass, polished stainless steel and other highly reflective materials shall only be used in moderation. In no case shall glare create an unsafe driving condition. An analysis of the impact of reflected sunlight (related to glare and heat) shall be submitted if greater than 20 percent of any facade is composed of materials that reflect greater than thirty percent of visible light.</i>	<b>Satisfied</b>

<b>CA2.3 – Pattern, Scale &amp; Texture</b>	Building facades or facade sections can provide visual cues to users through varying patterns and scales. Such cues are important in creating a legible built environment.	APPRAISAL
---	--	-----------

ADV	CA 2.3.1 – <i>Patterns reflected in materials and/or the installation of materials should be scaled in context with their use on the building. Generally flat and minimally textured facades are discouraged. Uses that often have opaque exterior walls such as theaters, stadiums, museums, gymnasiums, utilities and industries are to include pattern, scale and texture elements.</i>	<b>Satisfied</b>
ADV	CA 2.3.2 – <i>The scale of entrances, fenestration, articulation of the structure and use of materials shall create a balanced, cohesive visual composition that relates to the use and size of the building.</i>	<b>Satisfied</b>
ADV	CA 2.3.3 – <i>The pattern, perceived size and placement of fenestration or other building openings and horizontal bands should reflect and/or reconcile similar patterns on adjacent buildings.</i>	<b>Satisfied</b>
ADV	CA 2.3.4 – <i>In general, patterns should be more fine-grained and provide greater texture and visual interest nearer the ground level, especially when adjacent to a pedestrian way.</i>	<b>Satisfied</b>



CA2.4 – Window Treatment		Mirrored, tinted or otherwise blocked windows create undesirable “dead zones” along the sidewalk. The interaction between the public sphere and private sphere is critical to developing an accessible, inviting and safe pedestrian environment.	APPRAISAL
NA	CA 2.4.1 – At the grade level, adjacent to pedestrian ways, glass and/or other glazing materials shall have high transmissivity of visible light and low reflectivity qualities. The percent of visible light transmitted less the percent reflected shall be no less than 59 percent. For example: (1) Clear monolithic uncoated laminated glass transmits 86 percent and reflects 8 percent for a net factor of 78 percent and (2) Aqua-green low reflectivity glass transmits 66 percent and reflects 7 percent for a net factor of 59 percent.		Not Applicable
REQ	CA 2.4.2 – Upper-level windows that are mirrored or otherwise highly-reflective must not significantly reflect light onto adjacent buildings, plazas or public rights-of-way. Mirrored glass shall be used in moderation. An analysis of the impact of reflected sunlight (related to glare and heat) shall be submitted if greater than 20 percent of any facade is composed of materials that reflect greater than 30 percent of visible light. In no case shall glare create an unsafe driving condition. This information may be submitted conceptually at the schematic design phase. If additional analysis is warranted the architect may submit impact information at the appropriate design phase.		Satisfied
REQ	CA 2.4.3 – The fenestration pattern of grade level windows and openings shall be compatible with the grade level use and the urban context. Movable security accordion type gates and overhead security barriers are not permitted. Permanently installed grills shall be compatible and integrated with the building design.		Satisfied
REQ	CA 2.4.4 – Awnings, shutters and other energy conservation devices shall be designed integral with the building.		Satisfied
NA	CA 2.4.5 – All sides of the building with fenestration and/or required openings that are abutting developable property not controlled by the owner shall be offset and/or set back from the property line a distance consistent with the requirements of the relevant building codes and/or fire rated as required, unless air-rights (or development rights) are acquired from adjacent properties.		Not Applicable
NA	CA 2.4.6 – In the Village Mixed-Use district typology, it is recommended that all grade level windows on new structures that are adjacent to the public sidewalk be able to be opened.		Not Applicable
CA2.5 – Signs		Building signage is important to help people easily locate destinations and to promote a Regional Center that is legible. Signage can also, however, detract from these purposes.	APPRAISAL
REQ	CA 2.5.1 – Buildings shall be designed to incorporate building and business signs into the facade design. Signs shall be compatible with the architectural pattern, style and fenestration of the building.		Satisfied
REQ	CA 2.5.2 – Signs shall be “architectural type” letters. The individual letters may be lighted, back lit or neon type letters. Backlit panel or “box type” signs are generally discouraged. If these sign types are used, the background shall be non-reflective, opaque and dark in color with lettering light in color.		See Recommendations
REQ	CA 2.5.3 – Projecting signs shall be permitted when they are integrated with the building design and when contextual relationships are compatible. Signs shall have maximum projection of four feet in to the right-of-way with a minimum Clear Height Zone of nine feet.		None proposed
NA	CA 2.5.4 – Strobe lights, motion and other attention-getting devices shall not be used.		None proposed
NA	CA 2.5.5 – Grade level window signs and displays are permitted but shall not obscure more than 15 percent of the total window area or more than 15 percent of any single storefront window panel and shall only contain materials for products or services (or representative of services) available on premises.		None proposed
REQ	CA 2.5.6 – Signs are to have an 80 percent contrast ratio to enhance legibility for the sight impaired.		See Recommendations

ADV	CA 2.5.7 – Signs are encouraged to be designed creatively and artistically.	See Recommendations
REQ	CA 2.5.8 – All buildings shall have the street address number clearly visible, daytime and nighttime, from the pedestrian way and from the vehicle travel lanes for each public entrance. Numbers shall be a minimum of four inches in height.	See Recommendations

**CA2.6 – Rooflines/Rooftops**

	In the Regional Center, rooftops are usually visible from high-rise buildings and should therefore contribute to the overall character of the area.	APPRAISAL
REQ	CA 2.6.1 – The uppermost portion of the facade (building massing, roof form, eave, cornice, upper floor level(s), roof top design and/or parapet) of all buildings shall be articulated with a treatment in scale with the building.	Satisfied
REQ	CA 2.6.2 – Rooftop zones are to be designed integral with the building with consideration given for the view from the grade level and from other buildings. Mechanical equipment shall be placed to complement the building design and/or screened with materials consistent with the building’s design.	Satisfied
ADV	CA 2.6.3 – Public art and rooftop gardens are encouraged in rooftop design.	None proposed
ADV	CA 2.6.4 – The illumination of the uppermost portion of the facade (building massing, roof form, eave, cornice and/or parapet) of buildings over 10 stories in height is Design principles related to energy conservation and light pollution are to be followed.	None proposed

**CA2.7 – Facade Lighting**

	The architectural lighting of facades can provide additional character at night but can also create light pollution.	APPRAISAL
ADV	CA 2.7.1 – The architectural lighting of building features and special seasonal power should be incorporated into the building design.	None proposed
ADV	CA 2.7.2 – In the Campus, Entertainment, Urban Mixed-Use, Village Mixed-Use and Urban Core district typologies, where night time use is typical, the lighting of facade features is encouraged.	None proposed
REQ	CA 2.7.3 – Facade lighting should be done in a manner as to minimize light “overspray” onto adjacent properties or public rights-of-way. It should also be done with a minimum amount of lighting to minimize light pollution.	None proposed
NA	CA 2.7.4 – The illumination of the uppermost portion of buildings over 10 stories in height is recommended.	Not Applicable
ADV	CA 2.7.5 – When lighting (such as to accent windows or architectural elements) is used to contribute significantly to the overall design of structure or site, the installation should require low maintenance and be easily accessible. When operating, no more than 10 percent of the lighting shall be nonfunctioning at any point in time.	None proposed
NA	CA 2.7.6 – Except in the Entertainment Mixed-Use district typology, the non-sign use of exposed neon tubing (such as to accent windows or architectural elements) should be used sparingly.	Not Applicable

**CA2.8 – Awnings & Canopies**

	Awnings and canopies can contribute to the public streetscape while providing protection from the elements for pedestrians. They may also be used for energy conservation and as signage.	APPRAISAL
ADV	CA 2.8.1 – Awnings and canopies are encouraged in order to provide energy conservation and inclement weather protection to clients and pedestrians.	Satisfied
REQ	CA 2.8.2 – Awnings and canopies may have business identification signage on no greater than 15 percent of any surface.	Satisfied
REQ	CA 2.8.3 – Backlit or internally-illuminated vinyl or plastic awnings are not allowed.	Satisfied
REQ	CA 2.8.4 – Awnings shall have no greater than a four foot projection into the public right-of-way. Marquees associated with entertainment venues will be reviewed separately as a component of entrance design.	Satisfied
REQ	CA 2.8.5 – Awnings and canopies shall maintain the clear height zone with a minimum clearance of nine feet under the lowest part of the assembly.	Satisfied

NA	CA 2.8.6 – Canopies and canopy supports shall not impede pedestrian traffic, or narrow or otherwise restrict the pedestrian way. Canopies should not be located on building corners at intersections unless their supports do not interfere with pedestrian movement. All development in the right-of-way is subject to the issuance of an Encroachment Permit by the Indianapolis Department of Public Works.	Not Applicable
<b>CA 3.1 – Building Entrances/Exits</b>		APPRAISAL
NA	CA 3.1.1 – New building entrances shall face the public street, be emphasized and weather protected when possible.	Not Applicable
ADV	CA 3.1.2 – Building entrances should be designed in a manner to provide visual cues, such as entry scale, that differentiate public and private entrances.	Satisfied
REQ	CA 3.1.3 – Entries shall be lighted from dusk until dawn. Design principles related to energy conservation and light pollution are to be followed.	See Summary
ADV	CA 3.1.4 – Buildings at the intersection of two streets should consider corner access in order to treat each frontage equally and to provide easy access for pedestrians from the crosswalks.	Satisfied
REQ	CA 3.1.5 – Exit doors that open directly into the pedestrian way, street or alley shall be designed to provide safe egress and to not conflict with the sidewalk or Pedestrian Way utilization. Each door condition should be evaluated based on the volume of use, user visibility, accessibility and safety. Pedestrians normally maintain an 18 inch clear zone when walking adjacent to a wall.	Satisfied
<b>CA 3.2 – Arcades, Tunnels &amp; Walkways</b>		APPRAISAL
ADV	CA 3.2.1 – Interior arcades that are integral with the design of the building are encouraged in public buildings, hotels and mixed-use buildings.	None proposed
ADV	CA 3.2.2 – Protection from inclement weather should be provided at transit stops when possible.	Satisfied
ADV	CA 3.2.3 – Existing non-grade level walkway systems (skywalk, Canal level and tunnel) are to be extended and enhanced.	None proposed
<b>CA 4.1 – Exterior Site Furnishings</b>		APPRAISAL
REQ	CA 4.1.1 – All exterior light standards, tree grates, seating, etc. shall be dark finished metal, granite or other durable materials. Dark green, dark red, black or dark anodized colors are Color and material variations will be considered when the design of the site furnishings is directly related to the architectural materials and treatment of the building. This Guideline does not apply to art (defined as original works created by an individual or team that is experienced in their discipline.)	See Recommendations
REQ	CA 4.1.2 – Benches, bollards, trash receptacles, light standards and other similar elements shall not have advertising or business identification signage.	See Recommendations
NA	CA 4.1.3 – All elements that are approved to be in the public right-of-way placed by the adjacent property owner shall be maintained by the property owner and removed as required for safety, access and utility maintenance.	Not Applicable
REQ	CA 4.1.4 – Because of the visual clutter created by the misalignment of movable exterior site furnishings, movable waste receptacles, tables and planters are to be circular in plan. This does not apply to furnishings placed as a component of a regulated Sidewalk Restaurant.	Satisfied
ADV	CA 4.1.5 – All outdoor site furniture is encouraged to incorporate artistic elements or be designed as a work of public art.	Satisfied

<b>CA 4.2 – Pedestrian &amp; Bicycle Amenities</b>		The Regional Center should accommodate and promote pedestrian and bicycle activity as a way to reduce vehicle traffic and pollution and to promote public health.	APPRAISAL
ADV	CA 4.2.1 – <i>In areas identified by the Indianapolis Regional Center Plan 2020 as High-Density Mixed-Use, Medium- Density Mixed-Use and Research Community Mixed-Use, outdoor seating, bicycle parking and weather protection are encouraged adjacent to or accessible from the pedestrian way.</i>	<b>Not applicable-Regional Special Use recommendation</b>	
REQ	CA 4.2.2 – <i>Commercial and institutional developments of more than 50,000 square feet are required to provide at least one bicycle parking space per 10,000 square feet of building.</i>	Not Applicable – private use	
ADV	CA 4.2.3 – <i>Office, institutional and industrial developments are encouraged to provide shower and changing facilities for employees commuting by bicycle or by walking.</i>	None proposed	
REQ	CA 4.2.4 – <i>Residential development containing 20 or more residential units shall provide sheltered and secure bicycle storage with a no-step entry for alternative transportation modes (such as bicycle, scooter or motorcycle). Such facilities shall be provided at a ratio of at least one space per four residential units. The storage may be accommodated by providing space in a dedicated storage room designed for this purpose, space in a parking facility, or exterior storage facilities that are integrated with the site development. Projects composed of town homes or apartments with direct access to their own private garages are exempted.</i>	Not Applicable	
<b>CA 4.3 – Site Lighting</b>		Lighting should be provided in all built environment spheres at an appropriate level to provide for the safety and security of users.	APPRAISAL
REQ	CA 4.3.1 – <i>Pedestrian circulation corridors are to have pedestrian scale lighting.</i>	<b>See Summary</b>	
REQ	CA 4.3.2 – <i>Building entries, sidewalks and heavily used pedestrian areas in areas designated by the Indianapolis Regional Center Plan 2020 as High- Density Mixed-Use, Medium-Density Mixed-Use or Research Community Mixed-Use, as well as in the Campus district typology, are to be lit to a level of 4 to 8 foot-candles. Metal halide lamps (because of more effective visibility and better color rendition in the ultraviolet range) are preferred in high activity pedestrian areas. General lighting shall be provided to light vehicular parking, vehicular travel surfaces, plazas and service areas. The foot-candle level shall be designed to provide the minimum lighting needed for safety. A level of 1 to 5 foot-candles with a maximum variance of 4 to 1 for the brightest to dimmest lit spot is recommended by the Illuminating Engineering Society of North America (IESNA). High pressure sodium may be used in areas where general lighting is provided. Outdoor lighting design should take into account, (1) specific site conditions, (2) reducing light pollution, (3) reducing energy consumption, (4) improving safety and (5) aesthetic considerations.</i>	<b>See Summary</b>	
REQ	CA 4.3.3 – <i>Light sources shall be “full cut” shielded and direct light onto the surface area only. Lighting filaments in excess of 2000 lumens shall not be visible at the lot line, adjacent buildings or from above the source. Likewise, shall the level of light from a light source not exceed one foot-candle at the lot line, entering an adjacent building or above the source. When appropriate, exceptions may be made for decorative, ornamental and “historic period” lights (acorn globe, pendant, etc.), which shall be designed to minimize light overspray and light source contrast.</i>	<b>See Summary</b>	
<b>CA 4.4 – Screening</b>		The impact of parking zones and service/utility equipment and similar facilities should be minimized aesthetically and functionally on surrounding properties and pedestrian ways.	APPRAISAL
REQ	CA 4.4.1 – <i>Mechanical equipment, loading docks and trash removal areas shall be screened from view from the public streets and pedestrian ways. Dumpsters shall not be located adjacent to a pedestrian way.</i>	<b>Satisfied</b>	
REQ	CA 4.4.2 – <i>Screening materials are to be the same as the primary building materials and/or composed of permanent landscape elements such as: architectural metal fencing, masonry, trees, evergreen plant material, and berms.</i>	<b>Satisfied</b>	

REQ	CA 4.4.3 – Surface parking areas adjacent to the public right-of-way or pedestrian way shall have a minimum four foot deep planting area to provide for screening with trees, walls, berms and/or ground planting. Clear sightlines between three feet and seven feet above the sidewalk grade are to be maintained to promote visibility and safety (except where the primary zoning ordinance requires clear sightlines between two and one-half feet and nine feet at clear sight triangle areas at vehicular intersections). The design of the lower three feet (two and one-half feet in clear sight triangle areas) of the screening shall be permanent, durable and easily maintained. A solid “knee wall” or berm with ground level evergreen planting is recommended.	<b>Satisfied</b>
<b>CA 4.5 – Paving Materials</b>		APPRAISAL
ADV	CA 4.5.1 – Paving materials and installation patterns shall complement the building design and site utilization.	<b>Satisfied</b>
REQ	CA 4.5.2 – Plazas, sidewalks, outside eating areas and all other paved areas in the public or quasi-public spheres and not in a parking zone or service zone shall be constructed of masonry pavers or concrete (no asphalt or crushed stone permitted.)	<b>Satisfied</b>
REQ	CA 4.5.3 – Parking zones with more than 20 parking spaces shall be constructed of a permanent permeable material (such as permeable asphalt or unit masonry systems) or shall provide and maintain bio-swales or other natural methods to substantially eliminate storm water runoff. Creative and artistic solutions are encouraged. If petitioner proposes standard asphalt, concrete or other non-permeable paving, runoff and onsite detention documentation must be provided.	<b>Satisfied</b>
REQ	CA 4.5.4 – Paving systems and materials installed in the right-of-way by property owners shall meet Department of Public Works and Americans with Disabilities Act (ADA) standards.	<b>Satisfied</b>
<b>CA 4.6 – Urban Forestry &amp; Plant Material</b>		APPRAISAL
REQ	CA 4.6.1 – Plant materials are to be selected to exhibit seasonal coloration and flowers. All landscape design is to emphasize seasonal variation.	<b>Satisfied</b>
REQ	CA 4.6.2 – In parking zones, deciduous shade trees (minimum of four inch caliper) are to be provided and maintained at a minimum of one tree for each 1,600 square feet of paving in order to achieve 25 percent canopy coverage in 10 years of growth. Required trees may be clustered in islands, but only if such clustering will not impact the target of 25 percent of the parking zone being covered by tree canopy in 10 years of growth.	<b>Satisfied</b>
REQ	CA 4.6.3 – Tree islands in parking lots should be a minimum of 130 square feet per tree with irrigation or 150 square feet per tree without irrigation. This minimum requirement may be waived if the pavement is permeable. All tree islands shall be curbed to prevent damage to the tree.	<b>Satisfied</b>
REQ	CA 4.6.4 – Planting materials selected must be suitable to urban conditions. Trees with shallow root systems that could severely impact paved areas, or be severely impacted by paved areas, should be avoided. A wide range of species might be used depending on general conditions such as hardiness and site-specific conditions related to performance, soil, sunlight, exposure to pollutants, etc. Each site plan will be reviewed to determine the appropriateness of the proposed plant material.	<b>Satisfied</b>
REQ	CA 4.6.5 – Interior trees should be selected that have large canopies in order to maximize the surface area of pavement covered by the tree canopy. Perimeter trees should be selected that are columnar in order to visually maintain the urban “wall” of the corridor. Also consult guidelines relating to the adjacent public corridor for guidelines relating to street trees.	<b>Satisfied</b>

REQ	CA 4.6.6 – Clear sightlines between three feet and seven feet above the sidewalk and/or parking grade are to be maintained to promote visibility and safety.	Satisfied
REQ	CA 4.6.7 – All trees in parking zones or adjacent to a pedestrian way or activity zone must maintain a clear height zone of no less than nine feet. Only deciduous trees are permitted to be planted in the public sphere (right-of-way) or adjacent to the pedestrian way.	Satisfied
INFO	CA 4.6.8 – Alternative, documented systems of reducing urban heat buildup may be proposed.	Information
INFO	CA 4.6.9 – Designers should consult the Indianapolis Metropolitan Planning Area Multi-Modal and Public Space Design Guidelines for information related to plantings in the public right-of-way. Designers should also refer to current City Ordinances that regulate maintenance, planting and trees.	Information

**CA 5.1 – LEED Standards**      Development in the Regional Center should reflect innovation in environmentally sustainable building methods and materials.      APPRAISAL

ADV	CA 5.1.1 – Building and site development which conforms to Leadership in Energy and Environmental Design (LEED) Standards published by the U.S. Green Building Council are encouraged.	Information
INFO	CA 5.1.2 – Environmentally sound design solutions may include elements that are not anticipated in these Design Guidelines. Exceptions to the Design Guidelines will be considered for documented energy and environmental components.	Information

**CA 5.2 – Rooftop Gardens**      Green roofs can reduce urban heat islands, reduce sewage system loads by assimilating large amounts of rainwater, absorb air pollution, collect airborne particulates, store carbon and insulate a building from extreme temperatures.      APPRAISAL

ADV	CA 5.2.1 – Wherever practical, install “green roofs” consisting of vegetation and soil, or a growing medium, planted over a waterproof membrane. Additional layers, such as a root barrier and drainage and irrigation systems may also be included.	None proposed
-----	--	---------------

**CA 5.3 – Passive Heating/Cooling**      Buildings designed for passive solar and daylighting incorporate design features such as large south-facing windows and building materials that absorb and slowly release the sun’s heat. No mechanical means are employed in passive solar heating. Incorporating passive solar designs can reduce heating bills as much as 50 percent. Passive solar designs can also include natural ventilation for cooling. Windows are an important aspect of passive solar design. In cold climates, south-facing windows designed to let the sun’s heat in while insulating against the cold are ideal. Interior spaces requiring the most light, heat, and cooling are located along the south face of the building, with less used space to the north.      APPRAISAL

ADV	CA 5.3.1 – All projects should incorporate passive solar heating, cooling and daylighting strategies recommended by the Energy Efficiency and Renewable Energy (EERE) section of the U.S. Department of Energy.	Information
-----	---	-------------

**CA 5.4 – Energy Use**      For businesses and residential development, a strategic approach to energy management can produce significant savings for operation costs and the environment. Also, the Federal Energy Policy Act of 2005 outlines energy efficient residential systems for which Federal Tax Credits are available. The eligible energy systems include certified: (1) Windows & Doors, (2) Roofing Insulation, (3) HVAC Systems, (4) Water Heaters, (5) Solar Energy Systems, (6) Fuel Cells, (7) Air Source Heat Pumps, (8) Geo-Thermal Heat Pumps, (9) Solar Water heating, (10) Photovoltaic Systems and (11) Fuel Cells.      APPRAISAL

ADV	CA 5.4.1 – All projects are encouraged to follow standards recommended by Environmental Protection Agency’s (EPA ) ENERGY STAR partnership which offers an energy management strategy that helps in measuring current energy performance, setting goals, tracking savings and rewarding improvements.	Information
-----	---	-------------

<b>CA 6.1 – Utilities</b>		The Regional Center is the postcard of Central Indiana, the primary destination for visitors to the area and a major economic center. Therefore the visual presence of utilities should be minimized. The inherent maintenance and innovation related to utilities should be planned and incorporated into the building and site to minimize future disruption.	APPRAISAL
REQ	CA 6.1.1 – All on-site utility service access is to be buried when new construction is located more than 20 feet from an existing utility supply. New development is encouraged to provide for long-term utility and communication access flexibility.		<b>Satisfied</b>
REQ	CA 6.1.2 – Any utility and service connections and equipment placed along a pedestrian way are to be placed in the frontage zone and shall not impede the pedestrian way. Where possible, all such connections and equipment should be located in a screened service zone or other area not adjacent to a pedestrian way.		<b>Satisfied</b>
<b>CA 6.2 – Curb Cuts/Driveways</b>		In the Regional Center, accommodating the pedestrian is paramount. Service drives, parking access drives, and other crossing zones must be designed in a way so as not to impede the continuity of the accessible pedestrian network.	APPRAISAL
REQ	CA 6.2.1 – Pedestrian way paving treatment shall be continuous through curb cuts (and also compliant with Americans with Disabilities Act (ADA) standards.) Textured pavement and other “Traffic Calming” devices shall be used to create a safe environment for pedestrians.		<b>Satisfied</b>
ADV	CA 6.2.2 – When the right-of-way permits, alley access and parking in the interior of the block is encouraged.		<b>Satisfied</b>
REQ	CA 6.2.3 – Locate driveway aprons outside of the pedestrian way, with the sloped portion entirely within the separation zone (SZ).		<b>Satisfied</b>
REQ	CA 6.2.4 – Maintain the pedestrian way pavement and pattern at a cross slope of 1:50 (one foot high, 50 feet long) across the driveway.		<b>Satisfied</b>
ADV	CA 6.2.5 – Where necessary to keep the driveway slope from exceeding 1:10 (one foot high, 10 feet long), the sidewalk may be partially dropped to meet the grade at the top of the apron. This is preferred to extending the sloped apron into the pedestrian way.		<b>Satisfied</b>

**SUMMARY**

Review of the Guidelines against the submitted plans reveals the following items that remains outstanding or require explanation:

1. A lighting plan was not submitted to the file to identify the location of lighting standards. Additionally, a photometric plan has not been submitted to the file. A photometric plan should detail light standards and photometric levels for the site and at each entrance. Lighting must be provided at each entrance and must be dusk to dawn. Only full cut and shielded light standards are permitted with minimum foot-candle power outlined in CA 4.3.2 and CA 4.3.3. Pedestrian areas and entries must be lighted for safety (CA 3.1.3 and CA 4.3.1). A lighting and photometric plan shall be submitted and subject to planning staff review and approval, prior to installation.
2. Final scaled building elevations shall be submitted prior to the required pre-construction meeting.

**RECOMMENDATIONS**

Staff **recommends approval** of the Regional Center Approval petition subject to the following conditions:

1. The above Summary items must be met.

- 2. Within two years of MDC approval, any proposed signage and additional awnings or canopies shall be submitted and subject to planning staff review and approval prior to installation, per CA 2.5.2, CA 2.5.6, CA 2.5.7, and CA 2.5.8.
- 3. All exterior materials (i.e., furniture) shall be submitted and subject to planning staff review and approval prior to installation, per CA 4.1.1 and CA 4.1.2.
- 4. Address numerals shall be installed on the building façade prior to occupancy of the building, per CA 2.5.8.

**ZONING HISTORY**

**2011-CVR-812 / 2011-CVC-812; 639 South Delaware Street, 430 and 504 South Alabama Street,** Requests a variance of development standards of the Industrial Zoning Ordinance and the Regional Center Ordinance to provide for a 7.25-foot tall, 45-square foot free-standing sign a the southwest corner of South Street and Alabama Street, with a parking lot with a four-foot setback from the right-of-way of Delaware Street, with a nineteen-foot east side transitional yard and a 32-foot north side transitional yard and a vacation of Harmon Street, **approved (high impact project).**

**2010-REG-071; 639 South Delaware Street,** requested Regional Center Approval to provide for exterior renovation of an existing industrial building and landscaping, **approved (high impact project).**

**2009-REG-036; 639 South Delaware Street,** requested Regional Center Approval for the demolition of three attached buildings and one detached building, **approved (high impact project).**

**2011-REG-002; 750 South Delaware Street,** requested Regional Center Approval to provide for a surface parking lot, **approved (high impact project).**

**2011-DV3-004; 750 South Delaware Street,** requested a variance of development standards of the Industrial Zoning Ordinance to provide for a surface parking lot, with a fifteen-foot setback along Delaware Street and a zero-foot setback along Merrill Street, **granted.**

**2010-REG-119; 301 South Delaware Street,** requested Regional Center Approval to provide for a mixed-use development consisting of a hotel, conference center, multi-family dwellings, retail, office and two parking garages, **approved (high impact project).**

**2010-REG-101; 750 South Delaware Street,** requested Regional Center Approval for demolition of a warehouse building, **approved.**

**2008-APP-112; 639 South Delaware Street and 401 and 427 South Alabama Street,** requests Regional Center Approval to provide for an urban sustainable garden, **approved.**

**2010-ZON-077; 301 South Delaware Street; 337 and 430 South Alabama Street,** requests a rezoning of 14.016 acres to the CBD-2 (RC) District to provide for a mixed-use development with hotel conference center, office, retail and residential uses, **approved.**

**2010-REG-122; 301 South Delaware Street,** requests Regional Center Approval for a construction fence with signage, **approved.**

**2010-HOV-042; 301 South Delaware Street,** requests variance of the Sign Regulations for a construction fence with signage, **granted.**

JY

\*\*\*\*\*