



**CITY OF HENDERSONVILLE**  
**ENVIRONMENTAL SUSTAINABILITY BOARD**  
City Operations Building - Second Floor Conference Room | 305 Williams St. |  
Hendersonville, NC 28792  
Tuesday, February 11, 2025 – 4:30 PM



---

## **AGENDA**

**1. CALL TO ORDER**

**2. APPROVAL OF AGENDA**

**3. APPROVAL OF MINUTES**

A. Approval of January 2025 meeting minutes

**4. PUBLIC COMMENT**

**5. SUBCOMMITTEE UPDATES**

A. Hendo Earth Fest update - Omar Zafra, Chair and Betsey Zafra, Co-Chair - 15 minutes

**6. NEW BUSINESS**

A. Stormwater presentation - *Mike Huffman, Stormwater Director - 45 minutes*

**7. UPCOMING CITY COUNCIL TOPICS PERTINENT TO ESB**

**8. CITY COUNCIL LIAISON UPDATE**

**9. CITY COUNCIL LIAISON UPDATE**

A. Food Connections Hendersonville launch

Presenting Sustainability Strategic Plan Annual Report at 2/12 City Council meeting

**10. OLD BUSINESS**

A. Sustainability Hero Award update - *Virginia Tegel, Chair - 5 minutes*

B. ESB student member update - *Omar Zafra, Member and Virginia Tegel, Chair - 5 minutes*

C. Stream restoration update, *Jill Carter and Jane Edgar, Members - 5 minutes*

D. Green Business initiative update, *Jane Edgar and Tanya Guzman - 5 minutes*

E. Sustainability Demonstration Station schedule - *Virginia Tegel, Chair - 10 minutes*

F. Mayor's Monarch Pledge 2025 activities - *Jill Carter, Member - 10 minutes*

**11. ADJOURNMENT**

*The City of Hendersonville is committed to providing accessible facilities, programs and services for all people in compliance with the Americans with Disabilities Act (ADA). Should you need assistance or an accommodation for this meeting please contact the City Clerk no later than 24 hours prior to the meeting at 697-3005.*



**CITY OF HENDERSONVILLE**  
**ENVIRONMENTAL SUSTAINABILITY BOARD**  
City Operations Center Second Floor Conference Room  
Tuesday, January 21, 2025 – 4:30 PM



---

## MINUTES

### CALL TO ORDER

The meeting was called to order at 4:40p.m. Emily Davidson, Omar Zafra, Virginia Tegel, Tanya Guzman, and Jane Edgar were present.

### APPROVAL OF AGENDA

Jane Edgar approved first followed by Omar Zafra.

### NEW BUSINESS

1. Vote on new meeting time

Tanya motioned first followed by Virginia Tegel to have meetings on Tuesdays at 4:30p.m. Omar Zafra then motioned first followed by Jane Edgar to have meetings on the second Tuesday of the month. There was unanimous approval.

### ADJOURNMENT

The meeting was adjourned at 4:49p.m.

*The City of Hendersonville is committed to providing accessible facilities, programs and services for all people in compliance with the Americans with Disabilities Act (ADA). Should you need assistance or an accommodation for this meeting please contact the City Clerk no later than 24 hours prior to the meeting at 697-3005.*

**FOOD**

connection

---

**Reducing Waste.  
Easing Hunger.**

# Food Connection was born in Asheville, NC in 2014

Item A.



# Food waste statistics in the US

In the United States, people waste 92 billion pounds of food annually, equal to 145 billion meals. They throw away over \$473 billion worth of food annually. Shockingly, they waste 38% of all the food in America.

**92B**  
pounds of food go to waste each year.

**38%**  
of all food goes unsold or uneaten.

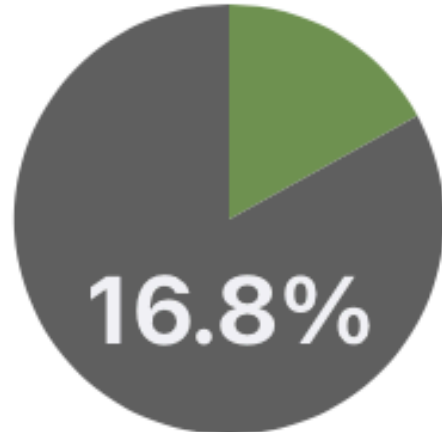
**145B**  
meals' worth of food goes to landfills.

**51.7%**  
of waste comes from the food industry.

# BUNCOMBE COUNTY

FOOD INSECURE POPULATION (CHILD): 8,120

FOOD INSECURITY RATE (CHILD)



ESTIMATED PROGRAM ELIGIBILITY AMONG FOOD INSECURE PEOPLE CHILD

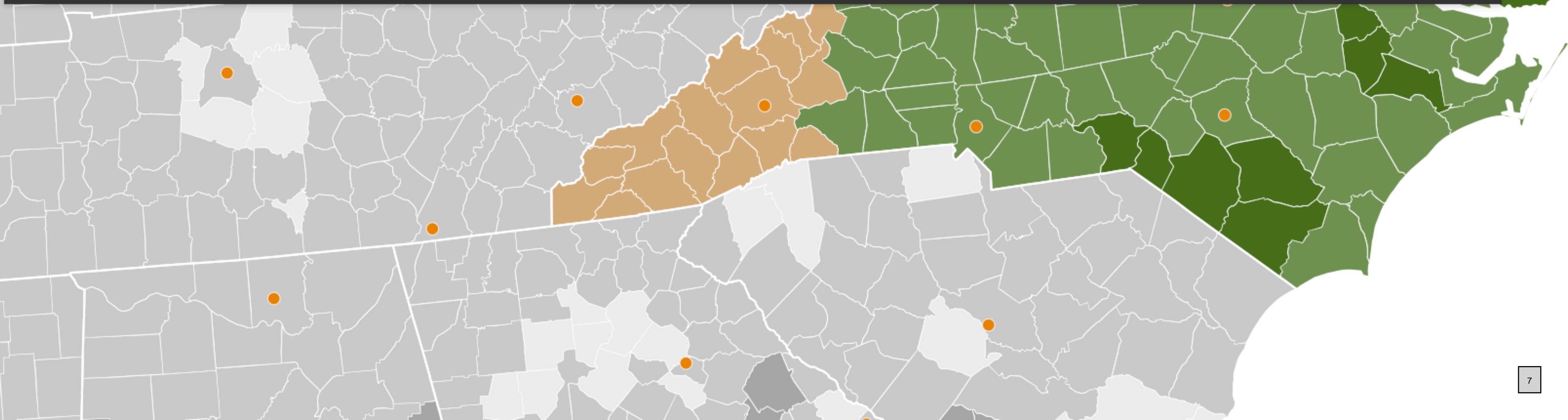


- 12%** Likely ineligible for federal nutrition programs (incomes above 185% of poverty)
- 88%** Income eligible for federal nutrition programs (incomes at or below 185% of poverty)

AVERAGE MEAL COST  
**\$ 3.07**

ADDITIONAL MONEY REQUIRED TO MEET FOOD NEEDS  
**\$ 16,460,000**

Click a County to view details



# Food Connection reduces food waste and eases hunger by rescuing surplus chef prepared food and distributing it to our neighbors in need!

Item A.







## **Federal Protection for food donors**

**The Bill Emerson Good Samaritan Food Donation Act was passed in 1996 during the Clinton Administration.**

**Few people knew about it.**

**This law has never been contested in the courts.**



**Our Mobile Meals Truck delivers individually packaged, nutritionally balanced meals directly to communities who do not have enough to eat**







# TODAY'S MENU

CHICKEN with  
mashed potatoes + vegetables

CHOPPED STEAK  
mashed potatoes + veggies

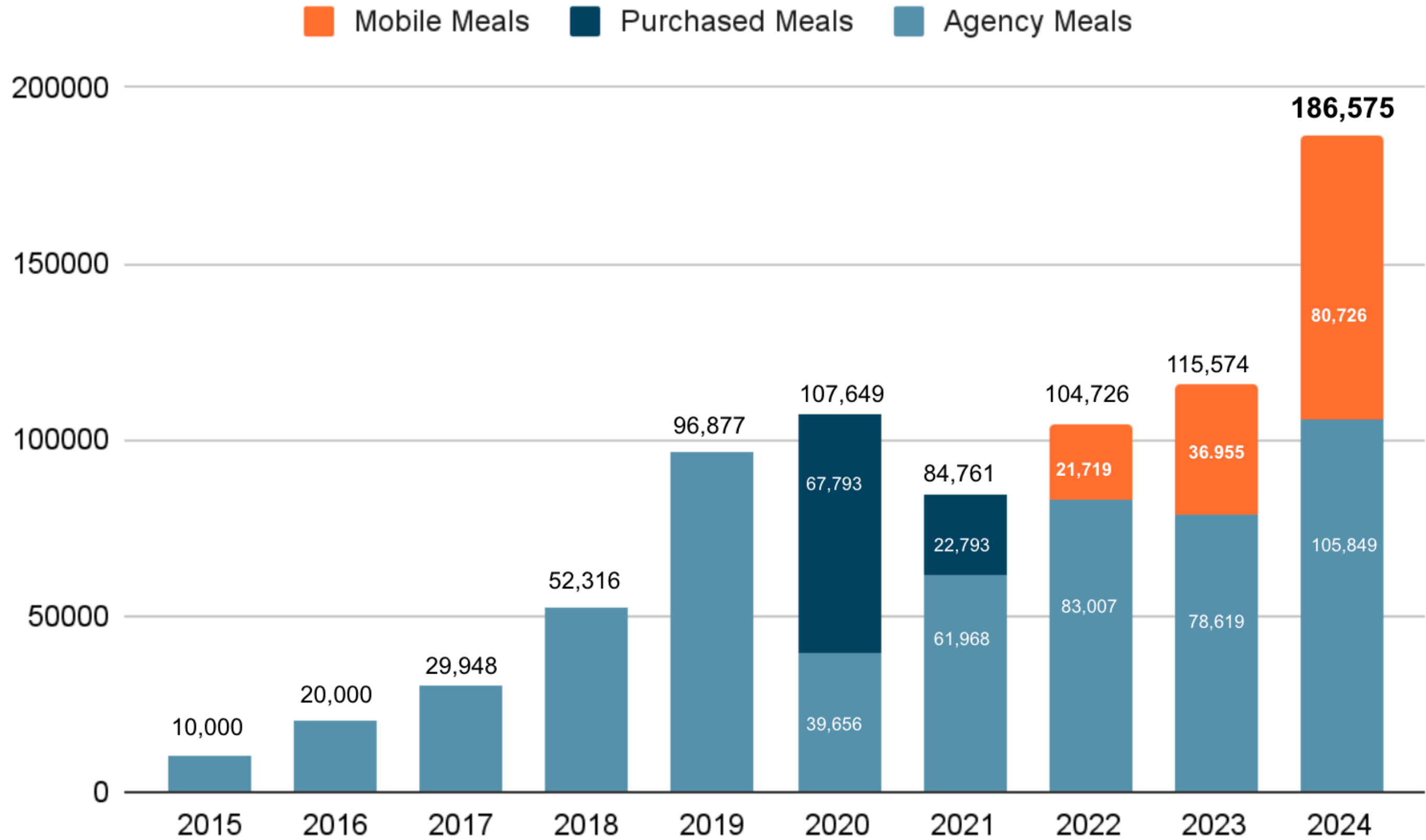
BLACK BEAN BURGERS  
with mixed veggies + salad

ALL are welcome

NO CHARGE 😊



# Historical Meals Distributed by Type



# Food Donor Partners

## Institutional Donors

Asheville Academy  
 Asheville School  
 Behavioral Health Group  
 Belfor Property Restoration  
 Biltmore Church  
 Blue Ridge Assembly  
 Blue Ridge Power  
 Bounty & Soul  
 Caiyalynn Burrell Child Crisis Center  
 Care Partners  
 Cragmont Assembly  
 Deerfield  
 Enka High School  
 Evergreen Charter School  
 Game of Throwing Leicester  
 Givens Highland Farm  
 Grace Episcopal Church  
 Gwynn Valley  
 Haw Creek Commons  
 HCA Healthcare

## Homegrown

MANNA FoodBank  
 Meals on Wheels  
 Mercy Chefs  
 Mission Hospital  
 Montreat Conference Center  
 Pinegate Renewables  
 Ridgecrest Conference Center  
 Taste of Asheville  
 The Cathedral of All Souls  
 The Farm  
 Thoughtful Pies  
 UNCA  
 Warren Wilson College  
 Whole Foods  
 World Central Kitchen

## Gifted Food Donors

Explore Asheville  
 Feeding Charlotte  
 Fresh Point  
 Halal Food Truck  
 Jetti Rae's  
 Locals Seafood  
 Spanish for Fun

## Restaurant Donors

Beradu  
 Bold Rock  
 Catering by Corey  
 Celine & Company  
 Chai Pani  
 Chipotle  
 Chop Shop  
 Cliffs at Walnut  
 Crest Center  
 Dining Innovations  
 Dogwood Health Trust  
 Everyday Gourmet  
 Filo  
 Fioreously Delicious  
 Good Wheel Farm  
 Harrah's Cherokee Center  
 Highland Brewing Company  
 Homegrown  
 LongHorn Steakhouse  
 Luella's BBQ

Mountain Madre  
 Old School Subs  
 Omni Grove Park Inn  
 Pack's Tavern  
 Pinegate Renewables  
 Posana  
 Rabbit Rabbit  
 Red Radish  
 Sage and Spice  
 Sierra Nevada  
 Smash Events  
 Starbucks  
 The Venue  
 United Way  
 Urban Orchard



# Food Recipient Partners

12 Baskets  
 ABCCM Daily Meal  
 ABCCM Hominy Valley Crisis Ministry  
 ABCCM South Crisis Ministry  
 ABCCM Transformation Village  
 ABCCM Veterans Restoration Quarter  
 Asheville Terrace Apartments via Meals on Wheels  
 BEAR Closet in Marion  
 Behavioral Health Group  
 Bell Church UMC  
 Big Ivy Community Center  
 Black Mountain Helene Distribution Center  
 Black Mountain Home for Children  
 Black Mountain Open Table  
 Blue Ridge Apartments  
 Bounty and Soul  
 Bountiful Cities  
 Bread of Life  
 Collins Center  
 Community Pick-up (Squashgate)

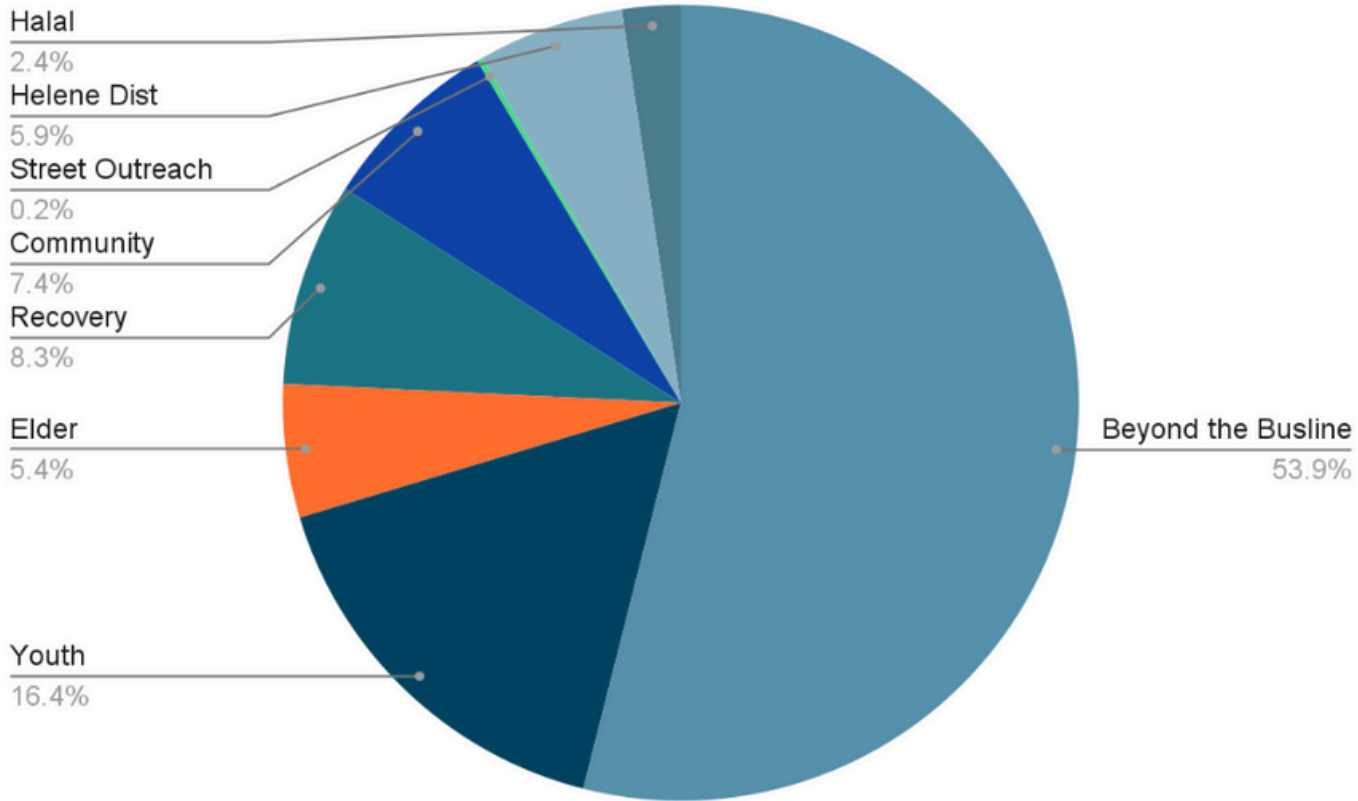
Compass Point  
 Chop Shop  
 Dream Center  
 East Asheville Welcome Table  
 Equal Plates Project  
 Food Waste Solutions  
 Foothills Food Hub  
 Francis Asbury United Methodist Church  
 Givens Gerber Park  
 Grass Roots  
 Haywood Respite  
 Homeward Bound's AHOPE Day Center  
 Hope for Tomorrow  
 Loving Food Resources  
 Lutheran Church  
 Mercy Chefs  
 Mi Kasa Criolla  
 Montessori Learning Community Of Asheville  
 PODS  
 Place Church

Regina's  
 Rosetta's  
 Taqueria Munoz  
 Unete's MANOS Program  
 Sage and Spice  
 Salvation Army  
 Search and Rescue  
 South French Broad Free Fridge  
 St. James Church Food Pantry  
 Swannanoa Valley Christian Ministry  
 Sunrise Community Center  
 Sunrise Respite  
 Western Carolina Rescue Mission  
 YMI Cultural Center

**Henderson County Agency Recipients:**

Back on Track Addiction Ministries  
 Hope United Methodist Church  
 Lighthouse Foundation  
 Providence Baptist Church

# 2024 Mobile Meals Distributions by Program



### **Beyond The Bus Line: 36,885 meals**

- \*Big Ivy: 543
- Candler: 3702
- \*Fairview: 4446
- Leicester Drive Thru: 12702
- Ridgeview: 4665
- Swannanoa Drive Thru: 9964
- Veterans Restoration Quarters: 1163

### **Community Connectors: 5,064 meals**

- Brandee East Asheville: 50
- Brenda: 393
- Craig: 80
- East Asheville Community Connector: 112
- Ellie: 1739
- Equal Plates Project: 50
- Jess: 66
- Loving Food Resources: 104
- Maggie: 24
- Mary Benson: 25
- Nancy: 684
- Nicanda: 55
- South French Broad Fridge: 946
- Stefanie: 88
- Swannanoa Valley Christian Ministries: 610
- Vaudie: 16

### **Helene Distributions: 4,050 meals**

- AB Tech: 240
- Biltmore Iron and Metal: 20
- Blue Ridge Terrace Apartments: 45
- Burnsville Helene Distribution: 200
- Clearmont Fire Department: 40
- Crossroads Church: 83
- Eddington Center: 790
- Emergency Buncombe: 25
- Grace Church: 106
- Green Mountain Helene Distribution: 61
- Johnston Middle School: 50
- Place Fellowship Church: 150
- Reuter Family YMCA: 454
- Rose's: 100
- UNETE: 1363
- Wellcare: 75
- West Yancey Fire Department: 125
- Woodfin Apts: 48
- Woodfin Helene Distribution: 75

### **Halal: 1,630 meals**

- Beloved Asheville: 250
- Biltmore Village: 90
- Fairview: 300
- Reflection Point Village: 150
- Rock Hill Baptist Church: 295
- \*UNETE: 545

### **Youth: 11,215 meals**

- AmeriCorps: 15
- Asheville Youth Collective: 25
- Bear Closet: 132
- Collins Early Learning Center: 420
- Hope for Tomorrow: 760
- In Real Life (AVL Middle): 1018
- Montessori Learning Community: 184
- PEAK Academy: 328
- PODS: 2370
- Verner Center for Early Learning: 3872
- Youth Transformed for Life: 2412

### **Recovery: 5,665 meals**

- Asheville Survival: 56
- Behavioral Health Group: 1614
- Compass Point: 20
- Dream Center: 92
- DSS: 78
- Haywood St Respite: 20
- Helpmate: 225
- Homeward Bound AHOPE: 290
- Lighthouse Collective Foundation: 1406
- Sunrise Community Center: 1343
- Sunrise Respite: 471

### **Elder: 3,708 meals**

- Asheville Terrace Apartments: 2100
- Blue Ridge Apartments: 1471

### **Street Outreach: 166 meals**

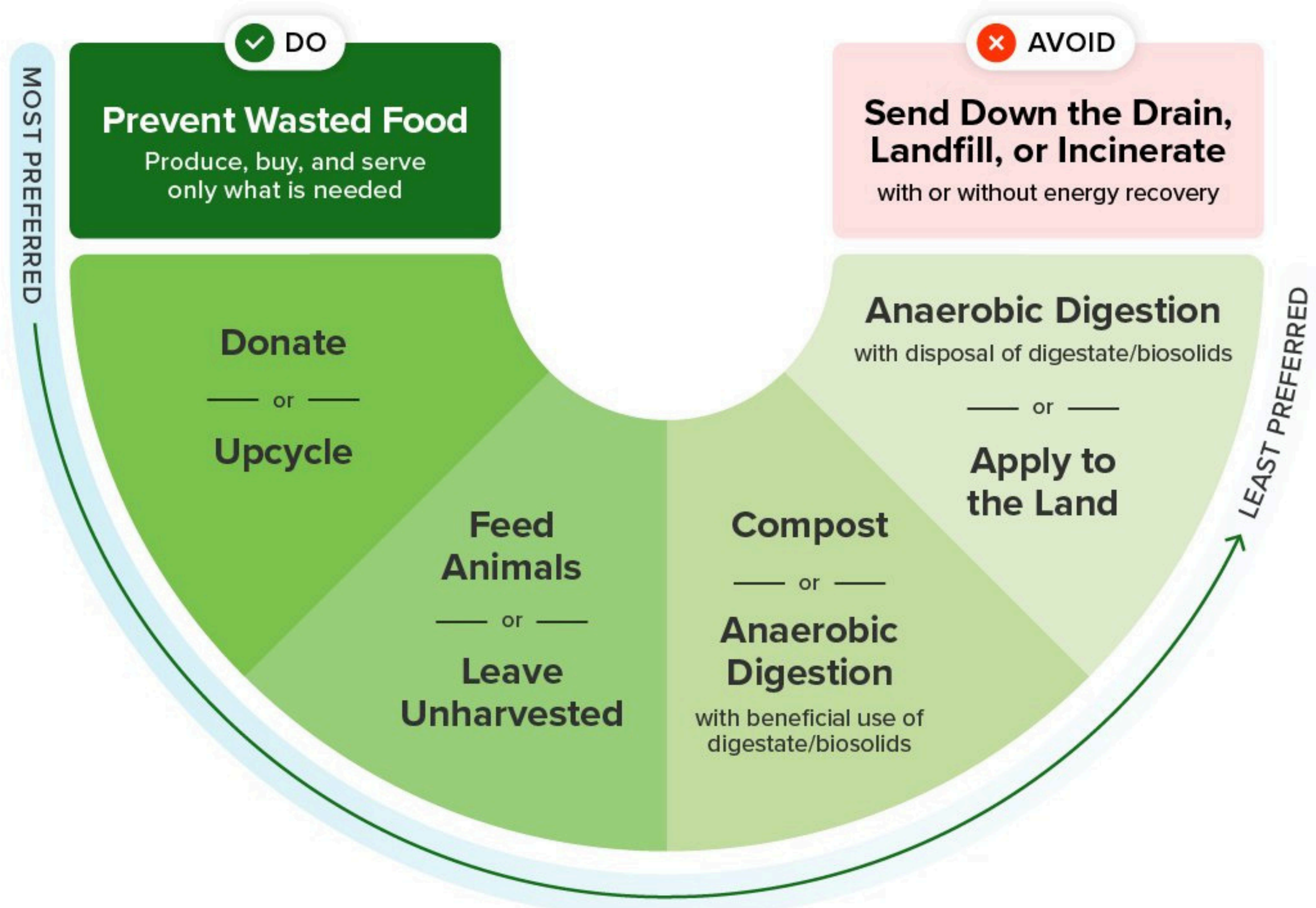


- **70 Donor Partners:**
- **56 Nonprofit/Faith Group Food Recipient Partners**
- **Mobile Meals Distributions: 26**
  - \* Youth 8
  - \* Beyond the Bus Line 6
  - \* Community Connectors 15
  - \* Recovery 10
  - \* Elder 2



# Wasted Food Scale

How to reduce the environmental impacts of wasted food



# Environmental Partners & Initiatives

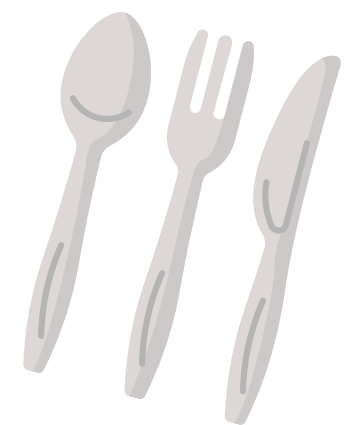


## Recycling Initiatives

- Pan recycling - now a measurable miscellaneous income
- Recycling plastic cutlery and togo boxes from restaurant partners
- Paper/plastic recycling on site for meal packing shifts

## Compost Partners

- Compost NOW
- Warren Wilson
- 12 Baskets

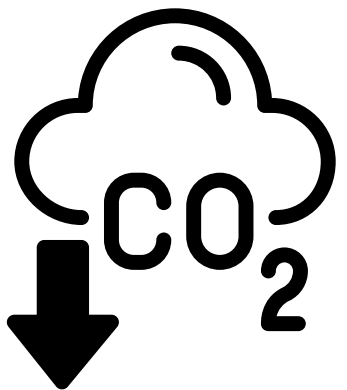


# 2024 Environmental Numbers

## 2024 --> 160,232 lbs diverted from the Buncombe County Landfill

That converts to:

- 416,603 lbs CO2 avoided
- 608,881.6 lbs Methane avoided  
*\*25 times more potent than CO2*
- 481,218 miles driven







# Hendersonville soft launch

## Current Food Donors:

- Gwen Valley Summer Camp

## Food Prospect Donors:

- Kanuga Conference Center
- Fallen Creek
- Eagle's Nest Camp
- Bonclarken Center
- Kenmore Country Club
- Hendersonville Country Club
- Lake Pointe Landing Retirement Center
- Carolina Village Retirement Center

## Location for Trailer: St. James Episcopal

(Food Connection Board Member donated money for the Hendersonvill Trailer!)

## Hendersonville Volunteers Committed: 10+

## Current Food Recipients:

- Back on Track Addiction Ministries
- Hope United Methodist Church
- Lighthouse Foundation
- Providence Baptist Church





**Reducing Food Waste.**  
**Easing Hunger.**

## Food Connection stats:

Total Chef prepared meals served to our neighbors in need:

**808,000+**

Total amount kept out of the landfill:

**350+ TONS**

## SDS Farmers Market schedule 2025

Month	Activity	Possibilities
Feb/March	Work day - spread wood chips, assemble raised bed, install signs and solar equip	
May 3	opening?	Hard to recycle w county
May 10	International Compost Awareness Week (ICAW) in 2025 will take place from May 4-10. The theme for 2025 is "Sustainable Communities Begin with Compost!"	Tree board WNC repair cafe Seed saving
June 14	Pollinator Month	June pollinator event?
July 12	One year celebration	
August 9		
September 13	Monarch Migration	
October 11		
November Holiday		
December Holiday		

**2025 Mayor's Monarch Pledge Actions - City of Hendersonville  
Proposed Action Items**

- 1 - Engage\* with community garden groups and urge them to plant native milkweeds and nectar-producing plants
- 2- Engage\* with Homeowners Associations (HOAs), Community Associations or neighborhood organizations to identify opportunities to plant monarch gardens and revise maintenance and mowing programs
- 3- Plant or maintain a monarch and pollinator-friendly demonstration garden at City Hall or another prominent or culturally significant community location.
- 4- Launch, expand, or continue an invasive species removal program that will support the re-establishment of native habitat for monarch butterflies and other pollinators.
- 5- Display educational signage at monarch gardens and pollinator habitat.



## Action Items

### Communications and Convening:

Action #	Action
1	<p>Issue a proclamation to raise awareness about the decline of the monarch butterfly and the species' need for habitat. This proclamation must incorporate a focus on monarch conservation.</p> <p>Example activities:</p> <ul style="list-style-type: none"> <li>• Issue a Monarch Day Pledge</li> <li>• Incorporate monarchs into your Earth Day, Pollinator Week or other proclamation</li> </ul>
2	<p>Launch or maintain a public communication effort to encourage residents to plant monarch gardens at their homes or in their neighborhoods. (If you have community members who speak a language other than English, we encourage you to also communicate in that language; Champion Pledges must communicate in that language.)</p>
3	<p>Engage* with community garden groups and urge them to plant native milkweeds and nectar-producing plants.</p>
4	<p>Engage* with city parks and recreation, public works, sustainability, and other relevant staff to identify opportunities to revise and maintain mowing programs and milkweed / native nectar plant planting programs.</p>

Action #	Action
5	<p>Engage* with gardening leaders and partners (e.g., Master Naturalists, Master Gardeners, Nature Centers, Native Plant Society Chapters, other long-standing and influential community leaders) to support monarch butterfly conservation.</p> <p>Example Activities:</p> <ul style="list-style-type: none"> <li>• Develop community gardens with local gardening leaders</li> <li>• Host programming and other activities with Nature Centers</li> <li>• Coordinate and collaborate with local gardening groups at schools, colleges, and universities</li> </ul>
6	<p>Engage* with Homeowners Associations (HOAs), Community Associations or neighborhood organizations to identify opportunities to plant monarch gardens and revise maintenance and mowing programs.</p>
7	<p>Engage* with developers, planners, landscape architects, and other community leaders and organizers engaged in planning process to identify opportunities to create monarch habitat.</p>
8	<p>Create a community-driven educational conservation strategy, initiative, or practice that focuses on and benefits local, underserved residents.</p> <p>Example Activities:</p> <ul style="list-style-type: none"> <li>• Conduct outreach and support habitat / green space improvements in underserved communities.</li> <li>• Develop brochures in different languages</li> </ul>

Action #	Action
9	<p>Create a community art project to enhance and promote monarch and pollinator conservation as well as cultural awareness and recognition.</p> <p>Example Activities:</p> <ul style="list-style-type: none"> <li>• Host photo contests</li> <li>• Commission murals</li> <li>• Create and show films and documentaries</li> <li>• Support public art installations</li> <li>• Collaborate with local artists, including school, college, and university art departments to create community-wide art</li> </ul>

\*Engage includes: in-person meetings, conferences and summits, trainings, or regular communication through email, phone, social media, etc.

### Program and Demonstration Gardens:

Action #	Action
10	Host or support a native seed or plant sale, giveaway or swap.
11	Facilitate or support a milkweed seed collection and propagation effort.
12	Plant or maintain a monarch and pollinator-friendly demonstration garden at City Hall or another prominent or culturally significant community location.

Action #	Action
13	Convert vacant lots to monarch habitat.
14	Plant milkweed and pollinator-friendly native nectar plants along roadsides, medians, or public rights-of-way.
15	<p>Launch or maintain an outdoor education program(s) (e.g., at schools, after-school programs, community centers and groups) that builds awareness and creates habitat by engaging students, educators, and the community in planting native milkweed and pollinator-friendly native nectar plants (i.e., National Wildlife Federation’s Schoolyard Habitats® program and Monarch Mission curriculum).</p> <p>Example Activities:</p> <ul style="list-style-type: none"> <li>• <a href="#">Eco-Schools U.S.</a></li> <li>• <a href="#">Schoolyard Habitats® Program</a></li> <li>• <a href="#">PK-12 Monarch Mission Curriculum</a> (English and Spanish)</li> </ul>
16	<p>Earn or maintain recognition for being a wildlife-friendly city by participating in other wildlife and habitat conservation efforts (i.e., National Wildlife Federation’s Community Wildlife Habitat program).</p> <p>Example Activities:</p> <ul style="list-style-type: none"> <li>• Join the <a href="#">Community Wildlife Habitat</a></li> </ul>

Action #	Action
17	<p>Host or support a monarch neighborhood challenge to engage neighborhoods and homeowners' associations within the community to increase awareness, support community unity around a common mission, and/or create habitat for the monarch butterfly.</p> <p>Example Activities:</p> <ul style="list-style-type: none"><li>• Host photo challenges</li><li>• Create property certification challenges</li><li>• Collaborate with schools, universities, and colleges to host joint awareness and habitat creation challenges</li></ul>
18	<p>Initiate or support community science (or citizen science) efforts that help monitor monarch migration and health.</p> <p>Example Activities:</p> <ul style="list-style-type: none"><li>• NWF's Monarch Stewards Program Certification</li><li>• Engage with local colleges and universities science departments to host community-wide opportunities</li><li>• Monarch Migration Tracking (<a href="#">Journey North</a>)</li></ul>
19	<p>Add or maintain native milkweed and nectar-producing plants in gardens in the community.</p>



Action #	Action
20	<p>Launch, expand, or continue an invasive species removal program that will support the re-establishment of native habitat for monarch butterflies and other pollinators.</p> <p>Example Activities:</p> <ul style="list-style-type: none"> <li>• Partner with volunteers and/or stakeholder organizations to remove herbaceous and woody invasive plants from city parks and other natural areas.</li> <li>• Host educational events to teach community members about invasive plant identification and how to safely remove invasives from their personal properties.</li> <li>• Create a distributable list of invasive species to your ecoregion to share with stakeholders and community members.</li> </ul>
21	Host or support a monarch butterfly festival that is accessible to all residents in the community and promotes monarch and pollinator conservation, as well as cultural awareness and recognition.
22	<p>Display educational signage at monarch gardens and pollinator habitat.</p> <p>Example Activities:</p> <ul style="list-style-type: none"> <li>• <a href="#">Neighborhood Garden Signs (Victory Garden of Tomorrow)</a></li> <li>• Create plant labels or interpretive language for community gardens, parks, prairie habitat, rights-of-way, etc.</li> </ul>

### Systems Change:

Action #	Action
23	Remove milkweed from the list of noxious plants in city weed / landscaping ordinances (if applicable).

Action #	Action
24	Change weed or mowing ordinances to allow for native prairie and plant habitats.
25	Increase the percentage of native plants, shrubs and trees that must be used in city landscaping ordinances and encourage use of milkweed, where appropriate.
26	<p>Launch, expand, or continue an effort to change municipal planting ordinances and practices to include more native milkweed and native nectar producing plants at city properties.</p> <p>Example Activities:</p> <ul style="list-style-type: none"> <li>• Pass an ordinance to incorporate the planting and cultivation of native milkweed, where feasible, into the city’s landscape portfolio to increase native biodiversity in public landscapes.</li> <li>• <a href="#">Check out the NWF Lanscaping Guide with Example Ordinances!</a></li> </ul>
27	Integrate monarch butterfly conservation into the city’s Park Master Plan, Sustainability Plan, Climate Resiliency Plan or other city plans.
28	<p>Reduce or eliminate the use of herbicides, pesticides, or other chemicals that are harmful to monarchs and pollinators and urban wildlife.</p> <p>Example Activities:</p> <ul style="list-style-type: none"> <li>• Work with local school districts to eliminate or minimize the use of pesticides, herbicides, and insecticides on school properties</li> <li>• Adopt Integrated Pest Management (IPM) practices</li> <li>• Adopt “chemical-free” landscape practices at city-maintained parks, municipal buildings, and/or other city-maintained properties.</li> </ul>
29	Launch, expand, or continue one or more ordinances to reduce light pollution to benefit urban wildlife.

Action #	Action
	<p>Example Activities:</p> <ul style="list-style-type: none"><li>• Introduce ordinances that require fully shielded outdoor light fixtures that have low color temperature and direct light downwards in city-maintained spaces.</li><li>• Change city ordinances to require that building owners and managers reduce and/or turn off excess lighting during periods of migration (Spring/Fall).</li></ul>
30	California Specific: Pass a resolution to protect over-wintering monarch butterfly habitat on public or private lands.