



CITY OF GUSTAVUS CITY COUNCIL GENERAL MEETING

Monday, September 20, 2021 at 7:00 PM
via Zoom

COUNCIL MEMBERS

Mayor Brittney Cannamore
Vice Mayor Joe Vanderzanden
Council Members: Joe Clark
Tania Lewis, Mike Taylor, John

CITY HALL

City Administrator - Tom Williams Ph.D.
City Clerk, CMC - Karen Platt
City Treasurer - Eduarda Loggins
Phone: 907-697-2451 | clerk@gustavus-ak.gov

DRAFT GENERAL MEETING AGENDA / PACKET FOR REGULAR WORK SESSION

ROLL CALL

Reading of the City of Gustavus Vision Statement

1. [Salmon Beyond Borders and the Southeast Alaska Indigenous Transboundary Commission Presentation](#)

APPROVAL OF MINUTES

2. [08-09-2021 General Meeting Minutes](#)
3. [08-23-2021 Special Meeting Minutes](#)

MAYOR'S REQUEST FOR AGENDA CHANGES

COMMITTEE / STAFF REPORTS

4. [Marine Facilities Advisory Committee Quarterly Report](#)
5. [Gustavus Public Library Quarterly Report](#)
6. [City Treasurer Monthly Financials](#)
7. [City Administrator WORK SESSION Report](#)

PUBLIC COMMENT ON NON-AGENDA ITEMS

CONSENT AGENDA

8. [FY22-XXNCO Introduction of Capital Project Funding 2021 \(Public Hearing 10-11-2021\)](#)
9. [FY22-XXNCO Introduction of Departmental Budgets \(Public Hearing 10-11-2021\)](#)

ORDINANCE FOR PUBLIC HEARING

10. [FY22-04NCO AMLIP Gravel Pit Fund \(Introduced 08-09-2021\)](#)
11. [FY22-05NCO Departmental Budgets \(Introduced 08-09-2021\)](#)
12. [FY22-06NCO Capital Project Funding \(Introduced 08-09-2021\)](#)

UNFINISHED BUSINESS

NEW BUSINESS

13. [Approve Scoping Document - Gustavus Fish Waste Disposal Station](#)

CITY COUNCIL REPORTS

14. [Mayor's Quarterly Report](#)

DRAFT GENERAL MEETING AGENDA/PACKET FOR REVIEW AT WORK SESSION

PUBLIC COMMENT ON NON-AGENDA ITEMS

EXECUTIVE SESSION

ADJOURNMENT

POSTED ON: September 15, 2021 at P.O, Library, City Hall & <https://cms.gustavus-ak.gov/>

ADA NOTICE

Any person with a disability who requires accommodations in order to participate in this meeting should telephone the City Clerk's office at (907) 697-2451, at least 48 hours prior to the meeting in order to make a request for a disability related modification or accommodation.

VISION STATEMENT

We envision a distinctive community:

- *That prospers while and by protecting its natural resources;*
- *With a sustainable economy and infrastructure that assures public health and safety while promoting personal development and initiative; and*
- *Where all members take social responsibility and actively participate in decision making affecting growth, development, regulation and enforcement; and*
- *In which people retain a closeness with and caring for each other individually and collectively while working together to accomplish community goals and preserve community traditions.*

Dear City of Gustavus Council Members and Mayor,

We (the Southeast Alaska Indigenous Transboundary Commission and Salmon Beyond Borders) are looking forward to presenting a drafted resolution for your consideration next week during your work session. [Here is "The Rivers that Feed Us" fact sheet and map insert that provides more context for the transboundary rivers issue and justification for this resolution.](#)

****This resolution builds on the strong letters and resolutions on this topic [submitted to U.S., Canadian, and British Columbia governments from all sectors of Alaska over the last seven years.](#)**

Like past resolutions, this resolution includes a request to President Biden and the U.S. federal government to continue to call on the Canadian federal government to secure binding, enforceable protections for the shared, iconic Taku, Stikine, and Unuk Rivers threatened by British Columbia's large-scale mining pollution upstream. Additionally, this resolution *also* calls on President Biden and the U.S. government to request of Canada a *temporary pause* on B.C. mine exploration, expansions and permitting in transboundary watersheds *until* these watershed protections, consistent with the U.N. Declaration on the Rights of Indigenous Peoples and the U.S.-Canada Boundary Waters Treaty, are implemented. Southeast Alaska Indigenous Transboundary Commission was the first Alaska entity to call for this temporary pause, and Salmon Beyond Borders fully supports this request from Southeast Alaska tribes. Notably, First Nations in B.C. and U.S. tribes in Washington, Idaho, and Montana also support SEITC's pause request and/or are also formally requesting pauses in B.C. mining development along other U.S.-B.C. transboundary rivers that are currently being polluted by upstream B.C. mines.

Moreover, this resolution requests the Biden Administration to call for a *permanent ban on mine waste ("tailings") dams* -- the perpetual storage of toxic mine waste underwater and behind earthen dams -- along shared rivers. Brazil, Chile, and Peru have banned such risky "failings dams," like those that failed at the Mount Polley mine in central B.C. and Brazil in the last seven years. The B.C. Mining Law Reform Network, a collective of over 30 organizations, is also calling for a ban on tailings dams upstream of communities, including communities in U.S.-B.C. transboundary watersheds.

As transboundary salmon runs continue to decline precipitously, the B.C. mining boom in the Taku, Stikine, and Unuk watersheds continues unabated, and Alaskans downstream still have no meaningful say in whether and what kind of mining development B.C. permits along shared rivers, the time is absolutely now to call on President Biden to strongly defend Alaska interests.

Thank you,

Breanna Walker (on behalf of Southeast Alaska Indigenous Transboundary Commission and Salmon Beyond Borders)

-- [Wrangell Sentinel](#) op-ed by SEITC Executive Director Frederick Otilius Olsen, Jr. (9/2/21)

-- [Juneau Empire](#) op-ed by SBB Campaign Director Jill Weitz (8/15/21)



**A RESOLUTION OF SUPPORT
FOR A PERMANENT BAN ON TAILINGS DAMS AND FOR A TEMPORARY HALT TO THE
PERMITTING, EXPLORATION, DEVELOPMENT, AND EXPANSION OF CANADIAN MINES
ALONG ALASKA-BRITISH COLUMBIA TRANSBOUNDARY SALMON RIVERS
UNTIL THE UNITED STATES-CANADA BOUNDARY WATERS TREATY OF 1909 AND
THE UNITED NATIONS DECLARATION ON THE RIGHTS OF INDIGENOUS PEOPLES ARE UPHELD AND AN
INTERNATIONAL AGREEMENT ON WATERSHED PROTECTIONS IS IMPLEMENTED**

WHEREAS, the Boundary Waters Treaty of 1909 was signed to prevent and resolve disputes over the use of shared waters between the United States (U.S.) and Canada, declaring in Article IV that, "it is further agreed that the waters herein defined as boundary waters and waters flowing across the boundary shall not be polluted on either side to the injury of health or property on the other;" and

WHEREAS, the Alaska-British Columbia (B.C.) Memorandum of Understanding and associated Statement of Cooperation on Protection of Transboundary Waters signed by the State of Alaska and the Province of B.C. in 2015 are important, but cannot provide binding, enforceable protections for the residents, rivers, and watersheds of the Alaska-B.C. transboundary region; and

WHEREAS, inadequately regulated Canadian hard rock mines in Northwest B.C., most of which are large-scale and open-pit, are occurring in known acid-generating ore bodies near the transboundary Taku, Stikine, and Unuk Rivers shared with Southeast Alaska, producing massive tailings dams that have to store toxic waste forever, expansive waste rock storage facilities, the need for perpetual water treatment, roads, and other infrastructure, as well as threatening (both in the short term and on geological timescales) the productivity and ecological health of these watersheds through cumulative impacts, contamination, habitat destruction, and/or possible catastrophic failures; and

WHEREAS, the Taku, Stikine, and Unuk Rivers are of tremendous and unique cultural, ecological, subsistence, economic, and recreational value as Indigenous people from several Nations have stewarded the Alaska-B.C. transboundary region since time immemorial and this region is now home to nearly 80,000 people in dozens of communities; and

WHEREAS, the Southeast Alaska Indigenous Transboundary Commission - a consortium of fifteen federally recognized Tribes in Southeast Alaska - in 2018 submitted a petition to the Inter-American Commission on Human Rights, asserting that Canada has violated their human rights by failing to prevent foreseeable harms from hard rock mines in B.C., and on March 31, 2021 sent a request to B.C. Premier Horgan for a pause in the permitting of B.C. mining projects in Alaska-B.C. transboundary watersheds until an agreement is made regarding Alaska Tribal participation in ongoing permit decisions pursuant to the United Nations Declaration on the Rights of Indigenous Peoples (UNDRIP); and

WHEREAS, the clean water and intact habitat of Alaska-B.C. transboundary watersheds are historically some of the most productive wild salmon rivers on the entire west coast of North America, with the Taku, Stikine, and Unuk Rivers alone contributing nearly \$50 million in economic activity, \$34 million in direct spending, over 400 jobs and almost \$20 million in labor income towards Southeast Alaska's annual multi-billion dollar fishing and visitor industries; and

WHEREAS, the leaching of heavy metals to groundwater and sediment from mining can contaminate freshwater systems for decades, preventing recovery of fish populations many



years after the cessation of mining activity and posing a risk to human health, and B.C.'s Tulsequah Chief mine in the Taku River watershed has been abandoned and leaching acid mine drainage since 1957; and

WHEREAS, B.C.'s environmental assessment process does not set legal requirements or standards for assessing cumulative effects of existing and proposed development, and B.C.'s open-pit Red Chris mine has been operating at the headwaters of the Stikine River since 2015, the entire riparian corridor of the Iskut River, the largest tributary of the Stikine River, is staked with B.C. mineral claims, B.C.'s Kerr-Sulphurets-Mitchell project (KSM), if built as proposed in the Unuk-Nass River watersheds, would be the largest open-pit mine in Canada and one of the largest in the world, and more than half of the B.C. portion of the Unuk watershed is staked with mineral claims; and

WHEREAS, the Taku, Stikine, and Unuk Rivers are experiencing a decline in wild salmon populations, resulting in the Alaska Department of Fish and Game listing Chinook salmon in the Unuk River as a Stock of Concern in 2017 and will soon list Chinook salmon in the Taku and Stikine Rivers as Stocks of Concern; and

WHEREAS, on June 30, 2021, Canada's Department of Fisheries and Oceans eliminated 60% of its commercial salmon fleet in B.C. due to poor returns and declining populations - some near 90% declines - resulting in the largest set of commercial salmon fishery closures in B.C. history, while simultaneously B.C. continues to permit industrialization of the headwaters (spawning and rearing grounds) of some of its largest salmon producing systems; and

WHEREAS, the risk of natural forces such as extreme precipitation events and landslides, which are becoming more common due to climate change, add further instability to the mining infrastructure and could trigger catastrophic failure of the tailings waste dams and thereby release contaminants into the Taku, Stikine, and Unuk waterbodies and are inadequately addressed in B.C. mine operations designs; and

WHEREAS, following B.C.'s Mount Polley mine disaster in 2014 an expert panel appointed by the B.C. government found that if mining companies continue their business-as-usual operations the province could face an average of two dam failures every ten years and the same expert panel reported there are 123 active tailings dams in B.C.; and

WHEREAS, the Auditor General of B.C., in her report issued on May 3, 2016, found that the B.C. Ministry of Energy and Mines and Ministry of the Environment's "compliance and enforcement activities of the mining sector are inadequate to protect the province from significant environmental risks", and according to a 2017 report by the United Nations Environment Programme, Canada has the world's second-worst record for mine tailings spills after China, with seven incidents reported in the previous decade; and

WHEREAS, the June 2021 *Audit of Code Requirements for Tailings Storage Facilities* by B.C.'s Mine Audits and Effectiveness Unit, has found provincial mining code changes developed after the Mount Polley disaster lack the definition needed to ensure compliance, verification and enforcement—which means communities and the environment across the province lack full protection against the potentially catastrophic consequences of tailings dam failures that B.C.'s new mining code was meant to provide; and

WHEREAS, B.C. touts itself to U.S. officials and potential investors as a world-class marketplace for responsibly-sourced metals and a mining jurisdiction with highly positive ESG (Environment, Social, Governance) outcomes and yet, B.C. is supporting widespread exploration and the



permitting of open pits and tailings dams at mine sites across B.C. just upriver from four U.S. border states (AK, WA, ID, MT) and at the headwaters of some of North America's last remaining productive wild salmon rivers, without the consultation and consent of local Tribes and communities downstream; and

WHEREAS, Native Tribes in Alaska, First Nations in B.C., commercial fishermen, local communities, conservation groups, thousands of concerned citizens, and local, state, provincial, and federal lawmakers (including all eight Senators from the four border states) on both sides of the U.S.-Canada border have raised concerns since 1998 about B.C. mining development potentially causing significant harm to water quality, fish and wildlife, cultural practices, and local economies in Alaska-B.C. transboundary watersheds and still do not have a meaningful say in the shared management of our shared rivers; and

WHEREAS, the below signed agree to share information and seek all opportunities for collaboration to address these issues, promote methods to protect these vital rivers from harm, and seek to facilitate and promote meaningful dialogue and engagement at the local, state, federal, provincial, and Tribal levels to assure protection of resources on both sides of the border.

We, the undersigned business owners, organizations, and community members, seek a thriving Salmon Coast (AK-B.C. transboundary region) fed by intact ecosystems, healthy salmon populations and landscapes, robust traditional lifestyles, and sustainable economies.

Therefore, BE IT RESOLVED that we call upon President Joe Biden and the United States government and Prime Minister Justin Trudeau and the Canadian government to *immediately*:

1. **Utilize** their authority under the United States-Canada Boundary Waters Treaty of 1909 to prevent and resolve disputes over the use of shared waters; and
2. **Support** an immediate temporary halt to permitting, exploration, development, and expansion of Canadian mines along shared Alaska-B.C. salmon rivers until a binding international agreement on watershed protections, developed by *all* jurisdictions in these shared transboundary watersheds and consistent with the Boundary Waters Treaty of 1909 and the United Nations Declaration on the Rights of Indigenous Peoples, is implemented; and
3. **Convene** with local communities, stakeholders, and Indigenous leaders of the Taku, Stikine, and Unuk watersheds to develop the aforementioned binding international agreement on watershed protections. This agreement will identify and honor no-go zones and decisions by local residents and Indigenous people on both sides of the international border, ensure mining companies and shareholders are liable for cleaning up their waste and compensating impacted communities for all damages, and enforce requirements for mining best practices, including a permanent ban on the perpetual storage of contaminated water and wet tailings behind earthen dams along these irreplaceable Alaska-B.C. transboundary salmon rivers.



TAKU - STIKINE - UNUK

THE RIVERS THAT FEED US



DEFEND AND SUSTAIN THE SALMON COAST

The transboundary Taku, Stikine, and Unuk Rivers of Southeast Alaska and Northwest British Columbia's Salmon Coast are the rivers that feed us - physically, culturally, economically, and spiritually. These wild, glacial rivers flow from the vast boreal forest of British Columbia (B.C.) into the temperate rainforest of Southeast Alaska and the Tongass National Forest.

Along these major salmon river systems, the B.C. government is aggressively pursuing unprecedented industrial development, including large-scale mines, many with massive toxic waste dams - without the meaningful consent of those living downstream.



SALMON BEYOND BORDERS
DEFENDING OUR RIVERS, JOBS, AND WAY OF LIFE.
www.salmonbeyondborders.org

WHAT'S AT STAKE: WILD SALMON & PEOPLE LIVE HERE



T'AA^KÚ: TAK

Item #1.

- Largest roadless river in the world on the West Coast of North America
- U.S. portion is under Tongass Land Use Designation

SHTAX' HÉEN: STIKINE

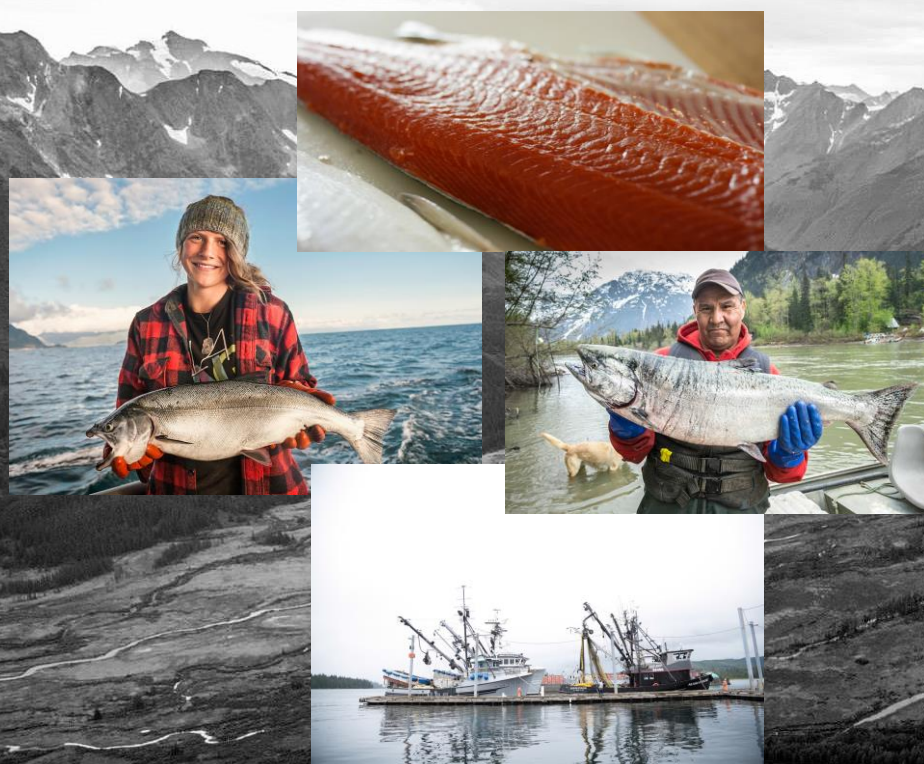
- Fastest free-flowing river in North America
- U.S. portion is within the Stikine-Leconte Wilderness Area

JOONÁK: UNUK

- B.C. has staked approx. 60 % of Canadian side of watershed with mining claims
- U.S. portion is within Misty Fjords National Monument

The Taku, Stikine, and Unuk Rivers are central to life, culture, commerce, sustenance, and ways of life in this region - and home to several Indigenous Nations, including the Tlingit and the Tahltan - linking about 80,000 people in many communities on both sides of the U.S.-Canada border. These rivers are hotspots of biodiversity, climate refugia, and birth all five species of wild Pacific salmon - and serve as economic powerhouses that contribute \$48 million annually to Southeast Alaska's economy. Our transboundary rivers have been stewarded by Indigenous peoples since time immemorial and are subject to the U.S.-Canada Boundary Waters Treaty of 1909.

AT A GLANCE



B.C.'S MODERN-DAY GOLD RUSH

B.C. is feverishly rushing through massive open-pit gold and copper mines, including their colossal toxic waste storage facilities at the headwaters of shared, iconic salmon rivers without the meaningful input of communities and Tribes downstream in Alaska, and despite a global push to ban earthen mine tailings dams.

The industrialization of these river systems is the largest threat to some of the last remaining wild salmon habitat left on the planet. B.C.'s archaic mining laws are not strong enough to protect communities that depend upon cold, clean water, and wild salmon.

Almost 20% of all three AK-B.C. transboundary watersheds are staked with B.C. mineral claims. B.C. markets these mines of the "Golden Triangle" as important for the "clean energy transition." In reality, the vast majority of mining companies are targeting mostly gold. About 80% of the gold they dig up will become jewelry.



TULSEQUAH CHIEF - ABANDONED MINE IN TAKU



RED CHRIS - OPEN-PIT MINE IN STIKINE



RED CHRIS MINE, STIKINE WATERSHED



MOUNT POLLEY MINE, FRASER WATERSHED



TOXIC TAILINGS DAMS

B.C. continues to permit earthen mine "tailings dams" along shared salmon rivers even though these massive mine waste dams have to hold back a toxic slurry of acid-generating waste forever. Society knows these dams pose a great risk to environmental and human health because these tailings dams will ultimately fail. An expert panel who reviewed B.C.'s 2014 Mount Polley mine waste dam failure (pictured right) found B.C. could face an average of two tailings dam failures every ten years. Peru, Chile, and Brazil have all banned upstream tailings dams and it's time these ticking time bombs are also banned along some of the world's last remaining intact salmon rivers.

SPECIAL PROTECTIONS FOR SPECIAL PLACES

This international issue requires an international solution. That is why we are calling for a temporary HALT to exploration, development, and expansion of mines along shared AK-B.C. salmon rivers until the U.S. and Canadian federal governments convene local communities, stakeholders, and Indigenous leaders to develop a binding international agreement that:

- Honors no-go zones and decisions by impacted local residents and Indigenous peoples
- Ensures B.C. mining companies and shareholders are liable for cleaning up their waste
- Permanently bans toxic mine waste dams along AK-B.C. transboundary salmon rivers

**TAKE ACTION AND LEARN MORE AT
SALMONBEYONDBORDERS.ORG AND SEITC.ORG**

THE RIVERS THAT FEED US

NON



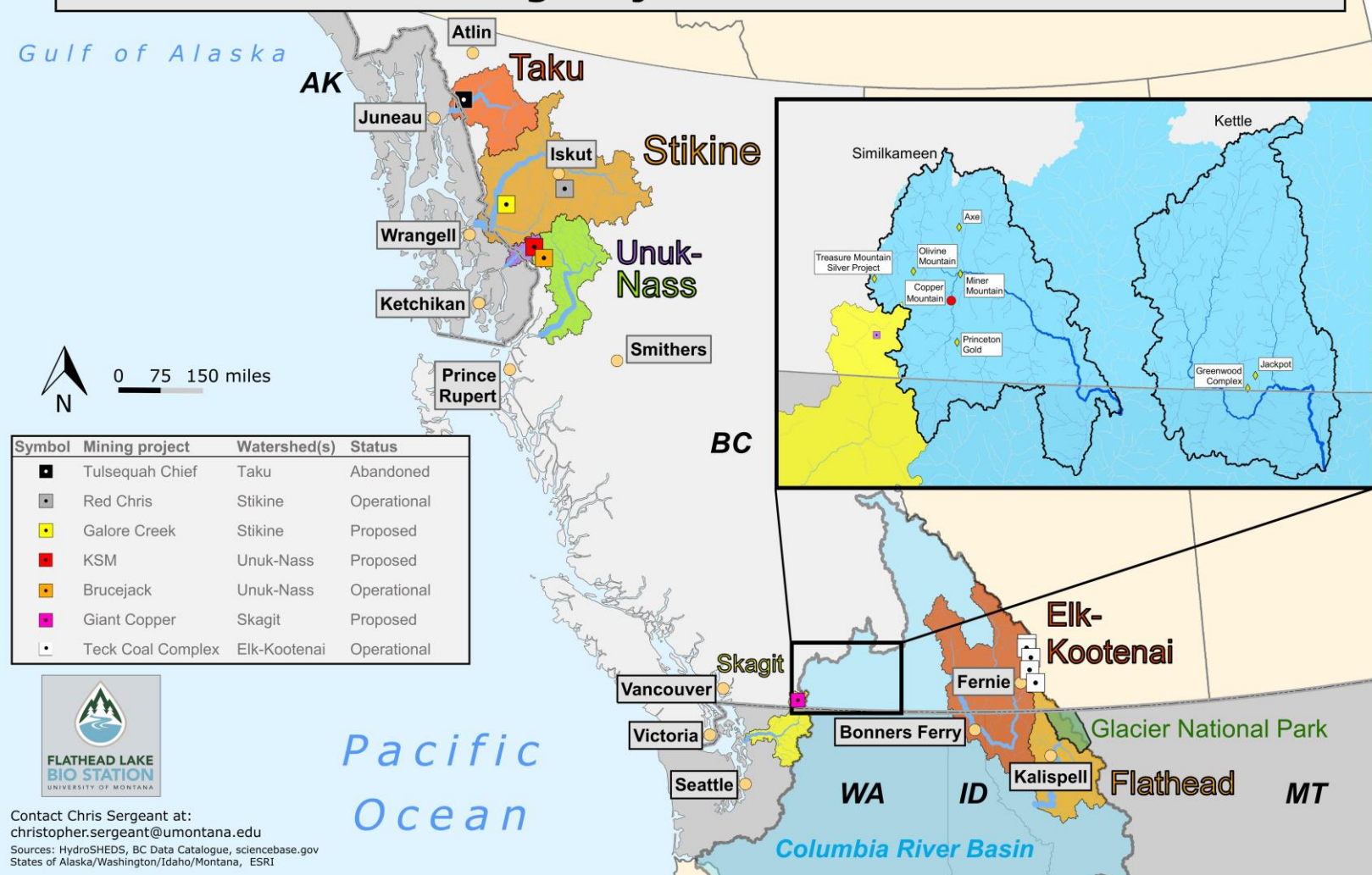
CANADA POLLUTES SHARED WILD RIVERS



Item #1.

Canadian large-scale mines impact the U.S. waters of three other British Columbia (B.C.) border states -- Washington, Idaho, and Montana -- just as they pollute or threaten to pollute the Alaska-B.C. transboundary Taku, Stikine, and Unuk Rivers. For decades, B.C. has stalled meaningful international action between the U.S., Canadian and Indigenous governments to protect shared rivers and salmon. B.C. promotes its handshake agreements (MOUs) with downstream U.S. states, while doubling down on the destruction of critical fish and wildlife habitat so vital to our economies and ways of life. B.C.'s own Auditor General has sharply criticized the B.C. mine evaluation, approval, monitoring, mitigation, and bonding processes, warning that B.C. is at risk of violating the Boundary Waters Treaty in relation to the ongoing B.C. mining-related pollution of international waterways.

British Columbia Mining Projects in Shared US-BC Watersheds



**CITY OF GUSTAVUS
CITY COUNCIL GENERAL MEETING
AUGUST 09, 2021**

Item #2.

MINUTES - PENDING

ROLL CALL

PRESENT

Mayor Brittney Cannamore
Vice Mayor Joe Vanderzanden
Council Member Joe Clark
Council Member Mike Taylor
Council Member John Buchheit
Council Member Tania Lewis
Council Seat E - Vacant

Mayor Cannamore presented a letter of recognition and certificate of appreciation to City Treasurer, Phoebe Vanselow.

Reading of the City of Gustavus Vision Statement

The City of Gustavus Vision Statement was read by Council Member Buchheit.

APPROVAL OF MINUTES

1. 07-19-2021 General Meeting Minutes

Motion made by Council Member Taylor to approve the July 19, 2021, General Meeting Minutes and asks for unanimous consent.

Seconded by Vice Mayor Vanderzanden.

Hearing no objections, the motion passes by unanimous consent.

MAYOR'S REQUEST FOR AGENDA CHANGES

There were no requests for agenda changes.

Hearing no objections, the agenda is set.

COMMITTEE / STAFF REPORTS

2. Gustavus Visitor Association Year End Expense/Progress Report
Gustavus Visitor Association Vice President, Leah Okin submitted a written report and provided an oral summary.
3. Gustavus PFAS Action Coalition Quarterly Report
Gustavus PFAS Action Coalition Chair, Kelly McLaughlin submitted a written report and provided an oral summary.
4. Gustavus Disposal and Recycling Center Quarterly Report
Gustavus Disposal and Recycling Center Manager / Operator, Paul Berry submitted a written quarterly report, five-year comparison and provided an oral summary.
5. City Treasurer Monthly Financials and Quarterly Report

City Treasurer, Phoebe Vanselow submitted monthly financials, a written quarterly and provided an oral summary.

6. City Administrator General Meeting Report
City Administrator, Tom Williams submitted a written General Meeting report and provided an oral summary. Tom added that Senator Murkowski has policy staff from their Team Ocean that will be visiting Gustavus Saturday and hope to meet with city officials to discuss community topics.

PUBLIC COMMENT ON NON-AGENDA ITEMS

There was no Public Comment.

CONSENT AGENDA

Motion made by Council Member Buchheit to adopt the Consent Agenda by unanimous consent as presented.

Seconded by Council Member Clark.

Hearing no objections, Mayor Cannamore announced the Consent Agenda as passed by unanimous consent.

7. Approve Calculation of Endowment Fund Grant Amount for FY22 Cycle
8. FY22-04NCO AMLIP Gravel Pit Fund (Public Hearing 09-20-2021)
9. FY22-05NCO Departmental Budgets (Public Hearing 09-20-2021)
10. FY22-06NCO Capital Project Funding 2021 (Public Hearing 09-20-2021)

ORDINANCE FOR PUBLIC HEARING

11. FY22-01NCO AMLIP FY22 R&R (Introduced 7-19-2021)

Mayor Cannamore opened the Public Hearing at 7:55 PM

Public Testimony: There was no Public Testimony

Mayor Cannamore closed the Public Hearing at 7:56 PM

Motion made by Vice Mayor Vanderzanden to adopt FY22-01NCO AMLIP FY22 R&R (Introduced 7-19-2021)

Seconded by Council Member Clark.

Council Comment: There was no Council Comment.

Voting Yea: Mayor Cannamore, Vice Mayor Vanderzanden, Council Member Clark, Council Member Taylor, Council Member Buchheit, Council Member Lewis

12. FY22-02NCO AMLIP Road Maint - FY22 transfer (Introduced 07-19-2021)

Mayor Cannamore opened the Public Hearing at 7:59 PM

Public Testimony: There was no Public Testimony

Mayor Cannamore closed the Public Hearing at 8:00 PM

Motion made by Vice Mayor Vanderzanden to adopt FY22-02NCO AMLIP Road Maint - FY22 transfer (Introduced 07-19-2021).

Seconded by Mayor Cannamore.

Council Comment: There was no Council Comment.

Voting Yea: Mayor Cannamore, Vice Mayor Vanderzanden, Council Member Clark, Council Member Taylor, Council Member Buchheit, Council Member Lewis

13. FY22-03NCO Capital Project Funding 2021 (Introduced 07-19-2021)

Mayor Cannamore opened the Public Hearing at 8:03 PM

Public Testimony: There was no Public Testimony.

Mayor Cannamore closed the Public Hearing at 8:04 PM

Motion made by Council Member Clark to adopt FY22-03NCO Capital Project Funding 2021 (Introduced 07-19-2021)

Seconded by Council Member Lewis.

Council Comment: There was no Council Comment.

Voting Yea: Mayor Cannamore, Vice Mayor Vanderzanden, Council Member Clark, Council Member Taylor, Council Member Buchheit, Council Member Lewis

UNFINISHED BUSINESS

No Unfinished Business

NEW BUSINESS

14. Request from the City of Gustavus to the SEARHC Gustavus Clinic to implement a Vaccine Incentive Program with funding in the amount of \$1,500 from the Hoonah Indian Association

Motion made by Council Member Lewis to request that SEARHC Gustavus Clinic implement a COVID-19 Vaccine Incentive Program with funding in the amount of \$1,500 received from the Hoonah Indian Association. Upon confirmation from the clinic the city will issue a payment for the full amount of the program.

Seconded by Council Member Taylor.

Public Comment: There was no Public Comment.

Council Comment:
Vice Mayor Vanderzanden

Motion by Vice Mayor Vanderzanden to amend the main motion by striking out the entire motion and substituting with "I move to request the check for \$1500 received from the Hoonah Indian Association for a Vaccine Incentive Program to be turn over to the SEARHC Gustavus Clinic for COVID-19 related expenses to be used at their discretion."

Seconded: Mayor Cannamore

Council Comment:
Vice Mayor Vanderzanden

Council Member Clark
 Council Member Taylor
 Council Member Buchheit

Voting Yea: Mayor Cannamore, Vice Mayor Vanderzanden, Council Member Clark, Council Member Taylor, Council Member Buchheit, Council Member Lewis

CITY COUNCIL REPORTS

Council Member Taylor – Reported on the Grampa's Farm Road culvert removal and bridge installation project grant application with Lynn Canal Icy Straight Resource Advisory Council.

CITY COUNCIL QUESTIONS AND COMMENTS

Council Member Lewis - Clarifying question on amendment to Agenda Item #14.

Mayor Cannamore - Announced the acceptance of resignations from Council Members Clark, McLaughlin and Buchheit.

PUBLIC COMMENT ON NON-AGENDA ITEMS

There was no Public Comment on Non-Agenda Items.

EXECUTIVE SESSION

There was no Executive Session.

ADJOURNMENT

With no further business and hearing no objections, the meeting was adjourned at 8:26 PM.

 Brittney Cannamore, Mayor

 Date

 Attest: Karen Platt CMC, City Clerk

 Date

**CITY OF GUSTAVUS
CITY COUNCIL SPECIAL MEETING
AUGUST 23, 2021**

MINUTES - PENDING

ROLL CALL

PRESENT

Mayor Brittney Cannamore
Vice Mayor Joe Vanderzanden
Council Member Mike Taylor
Council Member John Buchheit
Council Member Tania Lewis
City Council Seat E is currently vacant.

ABSENT

Council Member Joe Clark

Reading of the City of Gustavus Vision Statement

The City of Gustavus Vision Statement was read by Mayor Cannamore.

APPROVAL OF MINUTES

No Approval of Minutes.

MAYOR'S REQUEST FOR AGENDA CHANGES

There were no requests for agenda changes.

Hearing no objections, the agenda is set by unanimous consent.

COMMITTEE / STAFF REPORTS

No Committee / Staff Reports.

PUBLIC COMMENT ON NON-AGENDA ITEMS

There was no Public Comment.

CONSENT AGENDA

No Consent Agenda.

ORDINANCE FOR PUBLIC HEARING

No Ordinance for Public Hearing.

UNFINISHED BUSINESS

No Unfinished Business.

NEW BUSINESS

1. Appointment of City Treasurer

Public Comment: None

Council Comment:
Council Member Buchheit

Motion made by Council Member Taylor, Seconded by Mayor Cannamore.
Voting Yea: Mayor Cannamore, Vice Mayor Vanderzanden, Council Member Taylor, Council Member Buchheit, Council Member Lewis

2. Swearing in of City Treasurer
City Clerk, Karen Platt administered the Oath of Office to Eduarda Loggins.

CITY COUNCIL REPORTS

No Council Reports.

CITY COUNCIL QUESTIONS AND COMMENTS

Mayor Cannamore - Extended a thank you to Marine Facilities Coordinator, Ben Sadler and Members of the public, Eric Syrene and Lewis Sharman for their response to a stranded boater and motorized vessel on Pleasant Island.

PUBLIC COMMENT ON NON-AGENDA ITEMS

Leslie Sirstad

EXECUTIVE SESSION

No Executive Session.

ADJOURNMENT

With no further business and hearing no objections, the meeting was adjourned at 7:20 PM.

Brittney Cannamore, Mayor

Date

Attest: Karen Platt CMC, City Clerk

Date

CITY ADMINISTRATOR'S REPORT SEPTEMBER WORK SESSION

COVID-19 TESTING PROGRAMS

We still have \$4680 available for rapid testing at this point, which should get us through another month or two. Staff proposes to continue the program until funds have been exhausted. We should receive approximately, \$9343 from FEMA for COVID-19, freeing up that amount of CARES funds for use on something else such as testing.

The PCR testing program looks to be extended until September 2022 with the associated funds for the program.

Does the Council wish to continue these programs as long as the funding is available? If so, does the Council direct staff to re-allocate the CARES funds that will be freed up by the FEMA COVID-19 reimbursement for the COVID-19 Rapid Testing program?

GOOD RIVER BRIDGE

The ADOT&PF bridge inspection report have identified the need as "High" to repair the Good River bridge. Staff, with assistance from Council member Taylor, has written a Request for Proposal (RFP) (attached) for the following work:

This work includes addressing the work needed as described by the observations of the report. The City anticipates that at least one site visit will be required to inspect and assess conditions in order to prepare plans for corrective measures. In addition, the selected firm will evaluate the embankment issues, with specific attention along the northwest corner where the side stream enters Good River, and determine what work, if any, is necessary to assure stability and longevity.

The design and specification shall include a construction cost estimate.

Is there interest in having it presented at the General Meeting as an agenda item?

VACCINE INCENTIVE PROGRAM

I spoke with the Clinic, and they will accept the grant for vaccine incentive program. Details are being worked out for how the funds will be used within the eligibility criteria.

SPEEDING TRUCKS ON WILSON ROAD

There have been several complaints about the large trucks speeding along Wilson Rd. I called the SECON project supervisor, and I haven't received any further complaints.

Council member Buchheit asked that the topic be added to the WS for discussion. via call with the project supervisor. I'd like to bring it up at the next work session to see if there's council support for a more formal letter. Where is the contractor at in the timeline: Are they nearing the end of work, or can we anticipate dump truck traffic to continue into the fall?

CITY WELCOMES NEW STAFF

GVFD Interim Fire Chief - We are happy to announce that we have hired Sol Martinez as the Interim Fire Chief. Sol will be taking the reins of the GVFD while the City completes the search period for a full-time Fire Chief.



City Treasurer – We are pleased to announce that Eduarda Loggins has been appointed as the City Treasurer. Eduarda has jumped in with both feet, tackling the many daily projects and duties under the helpful tutorage of Phoebe during the transition – THANK PHOEBE!

Welcome Aboard Sol and Eduarda!

CONTINUED ISSUES AT THE BEACH

We continue to have issues at the beach/restrooms with honey buckets, trash, and dog attacks. After speaking with the Mayor, staff is suggesting placing a camera on a pole that will provide live video of the beach and the restroom. Unless there is objection from the Council, staff will put together a proposal with costs for consideration. As this may be a controversial issue, I intend to reach out to the beach committee and prepare a public notice to post around town and on our media sites. **Are there any questions or comments?**

FEMA SITE VISIT

Council member Taylor and myself met with the FEMA team to review flood recovery work that the City is filing reimbursement for. The paperwork is almost complete for the completed projects and efforts will soon begin for the mitigation projects.





THE STATE
of **ALASKA**
GOVERNOR LUKE DUNLEAVY

Department of Transportation and Public Facilities

Design & Engineering Services
Bridge & Standards Section

3132 Channel Drive
P.O. Box 112500
Juneau, AK 99811-2500
907-465-8890
907-465-3124 (fax)
dot.state.ak.us



August 18, 2021

The Honorable Brittney Cannamore, Mayor
City of Gustavus
P.O. Box 1
Gustavus, AK 99826

Subject: 2021 Bridge Inspections

Dear Mayor Cannamore:

I am enclosing the reports for the bridges listed below with an extra copy for your maintenance personnel. The reports provide the following summary information:

- Bridge location, guardrail, and signing,
- Work Candidates: A list of recommended work or repairs to maintain the bridge. The photographs help identify the recommended repairs,
- Element Inspection: Presents a summary of observed conditions on and around the bridge,
- Hydraulics: Observations, stream bank conditions, soundings and drift,
- Structural Inventory and Appraisal (SI&A) sheet: Presents the condition ratings, appraisal codes, and other information, described in the 1995 Recording and Coding Guide for the Structure Inventory and Appraisal of the Nation's Bridges, found at <http://www.fhwa.dot.gov/BRIDGE/bripub.htm>.

The reports document the biennial inspection required by the National Bridge Inspection Standards (NBIS), and identifies the work necessary to maintain the structures in a safe and serviceable condition.

Please contact Larry Owen, Bridge Management Engineer, at (907) 465-8897 if you have questions regarding the inspection reports.

Sincerely,

Richard A Pratt

Richard A. Pratt, P.E.
Chief Bridge Engineer

Enclosures: Inspection Reports

cc: Pete Forsting, Structures & Research Engineer, FHWA, Juneau (letter only)

Bridge Number	Structure
0445	Good River
2310	Spruce Lane Bridge
2320	Tong Road Bridge
2321	Harry Hall Creek Bridge

DRAFT GENERAL MEETING AGENDA/PACKET FOR REVIEW AT WORK SESSION

Routine Inspection Report

Date: 5/18/2021

Br No 445 j GOOD RIVER

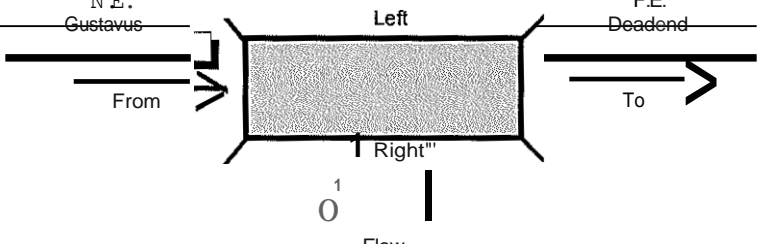
Sunny 60 F

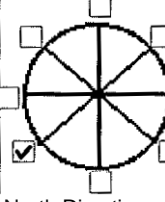
INSPECTOR: Hannah Bailey

ASSISTANT: Leslie Daugherty

initials HCP,

initials f....AD

N.E. Gustavus
 From 
 F.E. Deadend
 To

Appr Rdwy Width (ft) 15.00
 Est Camber (Inch) 0.00
 Bridge Length (ft) 76.00
 Bridge Width 0-0 (ft) 15.00
 North Direction 
 CDS Route 295316
 CDS Mile 0.1

Left

Left				Right				
Type	BRIDGE RAIL	Ht (in)	Curb Height (in)	Transition	Type	Ht (in)	Approach Type/Post	Leading End Treat
W-Beam/Side Mount	Bull 7.5 x 7.5	45.00	11.00	W- Beam	21.00	W-Beam	BCT	
Right				Left				
Type	BRIDGE RAIL	Ht (in)	Curb Height (in)	Transition	Type	Ht (in)	Approach Type/Post	Leading End Treat
W- Beam/Side Mount	Bull 7.5 x 7.5	45.00	11.00	W Beam	21.00	W-Beam	BCT	

SIGNS

Lt. Rt. Near End	Object Markers	oad Limit Wording or Other Sign	Lt. Rt. Far End	Object Markers	Load Limit Wording or Other Signs
<input type="radio"/>	Restricted Width		<input type="radio"/>	Restricted Width	
<input type="radio"/>	Vertical Clear		<input type="radio"/>	Vertical Clear	
<input type="radio"/>	Load Limit		<input type="radio"/>	Load Limit	
	Name Place		<input type="radio"/>	Name Place	

Deck Material Thk(Inches)

j Timber 11 3.50

Location Measured

Edge of Deck

Wear Surface Thk (Inches)

j Timber Run Pl 1 1.50

Wear Location

j Midspan

Drive Condition

j Good

Locality

Route

Utilities

Kind	Size	Location	Owner
Electric	3" Diameter Metal	First US Bay	
Electric	2 2-1/2" Dia PVC	Attached to DS Rail Posts	

Bridge No. 0445, GOOD RIVER

Work Candidates

Inspected on: 05/18/2021

Priority	Description	Quantity	Work Needed
High	Bridge Rail-Replace	24	FE US bull rail: Replace last 24 feet. OS: Replace posts 7 and 10.
High	Approach Railing (EA)	5	NE US: Repair 1W-beam lapped in wrong direction and loose end treatment cable. NE OS: Replace 1rotted post. FE OS: Replace 1post rotted. FE OS: Repair damaged end treatment and lighten cable. FE US: Replace 12 rotted posts and 4 damaged spacers.
High	Misc-Install Sign (EA)	3	Install FE name place sign and one lane bridge sign at both ends.
High	Channel-RepairWashouts /Erosion		Place material behind FE US soldier pile wall. Fill erosion hole with riprap at FE US embankment
Medium	Substructure-Repair (EA)		Replace rotten and loose lagging.

Bridge No. 0445, GOOD RIVER

Element Inspection

J11spectio11Date: 05/18/2021

Element Description		Observations
31	Timber Deck	Sand and gravel accumulated on deck between running planks and on edges, up to 2 inches deep. Moss and weeds growing at curb line at ends of bridge. About 25% of deck planks split at ends full depth. Bottom of deck water stained with isolated areas of minor section loss.
> 510	Wearing Surfaces	Typical: Running planks split and gouged. Nail heads are starting to protrude. Rot initiating at some of the splits. Unable to fully inspect FE of running plank due to gravel on bridge. NE: 1 board rotted for 5 feet.
111	Timber Open Girder/Beam	Beam 1 S3: 6 inch x 1 inch deep split at 2/3 height. Beam 3 S1: 7 foot long x 1 inch deep x 3 inch wide split at bottom. Minor section loss (1 inch or less) to bottom corners on about 5 percent of beams.
206	Timber Column	The pier piles sound a little soft near the water level. Lower ends of diagonal braces are starting to rot. P2 US Pile: Vertical cracking on pile, bottom 1/3 appears soft at face. P3 OS Pile: Splitting below crossbracing.
216	Timber Abutment	Abutment 1 Cap: US 4 foot horizontal crack; OS 2 foot diagonal crack full cap width. Abutment 1 Pile 1: Vertical split full visible height with 4 inches penetration. Abutment 2 Cap: Horizontal cracking along length. Abutment 2 Pile 3: Splitting with rot and section loss at bolts. Abutment 2 Backfill: Settlement of backfill between Piles 2 and 3, up to 8 inches vertically. Abutment 2 Wingwalls: US bottom 3 lagging boards rotated and separated from rest; OS Pile has splits and rot at top. Abutment 2 US retaining wall is sagging and has vegetation growing.
235	Timber Pier Cap	Horizontal splits at mid-height typical on both piers.
330	Metal Bridge Railing	OS: Posts 7 and 10 have full height vertical splits. Bullrail has abrasion and 1/3 of bullrail supports have section loss. NE US bull rail: Split 6 feet between posts 3 and 4. FE US bull rail: Last 24 feet is splitting along top with moss growing out of split. FE DS: Last 3 feet of bullrail has impact damage but still appears functional.
> 515	Steel Protective Coating	
600	Signs Smart Flag	Name plate sign missing at FE. No One Lane Bridge Sign at either end.
602	Approach Rail Smart Flag	Typical: End treatment cables loose; berms of soil reaching bottom of w beams. NE US: 1 W-beam lapped in wrong direction at bridge connection; Post 2 from bridge rotted out at top. NE OS: Post 1 from bridge is rotted. FE US: Post 2 from bridge rotted out at top; 12 rotten posts total and 4 damaged/rotten spacers. FE DS: Post 3 from end rotten; End treatment damaged; Retaining wall piles all rotten at top with about 2 inches remaining section of a 12 inch diameter pile.

ITJ

DRAFT GENERAL MEETING AGENDA/PACKET FOR REVIEW AT WORK SESSION

Bridge No. 0445, GOOD RIVER

606 Approach Fill Erosion Smart Flag

FE US embankment erosion and settlement behind wingwall. It appears an attempt was made to place some material in the erosion area; however, the material looks to be susceptible to further erosion. Retaining wall and soldier pile retaining wall lagging displaced and bsing fill. Vegetation growing from cracks and piles rotting at top. 15 feet x 8 feet of erosion behind US soldier pile retaining wall with tie backs. Some planks show deterioration, vegetation and moss growth on and between planks.

DRAFT GENERAL MEETING AGENDA/PACKET FOR REVIEW AT WORK SESSION

Br No 445 GOOD RIVER

Date: 5/18/2021

09 Odd 2021

INSPECTOR : Hannah Bailey

ASSISTANT: Leslie Daiigheft Y

Weather 445
Sunny

Temperature

HYDRAULICS REPORT

Inspection To Mud line At All Piers and Abuts?

Yes

Apparent HW

Stream
Bottom

AHW Comments

Material

Bank Erosion

Silt

Erosion Comments

NE and FE banks cut and sloughing
along banks US and OS as well as below
bridge.Sand

Activities

Drift Comments

several branches caught at FE OS pile.

Drift

LightRiprap Condition j None apparent.Other Hydraulic
CommentsFE approaches have retaining walls, US wall is loosing
fill behind wall.**SOUNDINGS**

Measured At Surface j Top Rail

Location j Upstream

**Soundings
Report**

All measurements in feet

09 Odd 2021 445

Horiz Dist from NE	Substr Unit No.	Vert Dist to Water Surface	Vert Dist to Stream Bottom	Remarks
0.00		0.0	5.9	Begin Bridge
5.00		0.0	6.8	
11.10		0.0	9.9	
17.90		0.0	11.6	End of Grass
19.40		0.0	14.0	Mud Begins
22.80		0.0	14.6	
24.00		0.0	17.0	
25.00		0.0	17.5	Eow, P2
35.70		0.0	18.9	
42.70		0.0	18.9	
49.20		0.0	19.4	Pier 3
55.60		0.0	18.5	
57.90		0.0	17.5	EOW
61.60		0.0	16.4	
64.00		0.0	14.8	Top of Grass
68.40		0.0	13.0	
75.00		0.0	12.8	End Bridge

Structure Inventory and Appraisal Sheet (English Units)

Bridge Key: 0445 Agency ID: 0445 In Off System: off system SR: 75.9 - so J Fo 1 No: ND. -J

IDENTIFICATION				INSPECTION			
State 1:	02 Alaska	Struc Number 6:	0445	Frequency 91:	24 months	Inspection Date 90:	05/18/2021
Facility Carried 7:	GOOD RIVER ROAD	Location 9:	MILE POINT 01	FC Freq 92A:	NA	FC Insp. Date 93A:	NA
Rte. (On/Under) SA:	Route On Structure	Rte Signing Prefix SB:	8 Other	NeJt FC Inspection:	NA	UW Freq 92B:	NA
Level of Service SC:	0	Rte. Number SO:	NSP00	UW Insp. Date 93B:	NA	Next UW Inspection:	NA
Directional Suffix SE:	ON/A	% Responsibility:		SI Freq. 92C:	NA	SI Date 93C:	NA
SHD District 2:	03 Southcoast	County Code 3:	Hoonah-Angoon Census	Next SI:	NA		
Place Code 4:	Gustavus	Mile Post 11:	039mi	CLASSIFICATION			
Feature Intersected 6:	GOOD RIVER			Defense Highway 100:	0 No a STRAHNET hwy	Parallel Structure 101:	No bridge exists
Latitude 16:	SSd 24 45.0 "	Longitude 17:	135d 46' 196"	Traffic Direction 102:	3 lane Br for 2-way	Temporary Structure 103:	No
Border Bndge Code 96:	Unknown (P)			HighWay System			
STRUCTURE TYPE AND MAT - ; ; ; L5				Toll Facility 20:			
				ONot on NHS		NB S Length 112:	Long Enough

Border Bndge No. 99:	NA	Functional Class 26:	09 Rural Local
of Approach Spans 45 0	Number of Spans Main Unit 45 3	104:	3 On free road
Main Span Mat 1 and Type 43A/B:	7 Wood or Timber	NaU New 00 < 110:	0 Not on truck network <
2 Stringer/Girder		Historical Sig. 37:	5 Not eligible for NRHP
Appr Span Mat 1 and Type 44A/B:	N/A	Owner 22:	City or Municipal Highway Agency
N/A	N/A	Custodian 21:	City or Municipal Highway Agency
Deck Type 107:	6 Wood or Timber	CONDITION	
Membrane 108B:		Deck 58: 6 Satisfactory	Super 59: 6 Satisfactory
		Sub 60:	
Wearing Surface 108A:	7 Wood or Timber	Channel/Ch. Protection 61:	5 Eroding
Deck Protection 108C:	0 None	Cutver 162:	NA

AGE AND SERVICE			
Year Built 27:	1984	Year Reconstructed 106:	
Type of Service on 42A:	5 Highway-pedestrian		
Type of Service under 42B:	5 Waterway		
Lanes on 28A:	Lanes under 288: 0	Detour Length 19:	124 mi
ADT 29:	10	Truck ADT 109: 1%	Year of ADT 30: 2018

GEOMETRIC DATA			
Length Max Span 48:	2500 ft	Structure Length 49:	7667 ft
Curb/Sidewalk Width LSOA:	0.0 ft	Curb/Sidewalk Width R SOB:	0.0 ft
Width Curb to Curb 51:	14.1 ft	Deck IMdth Out to Out 52:	15.3 ft
Approach Roadway Width 32:	16.08 ft	Median 33:	a No median
(w/ shoulders)			
Deck Area:	1,175.6 sq ft		
Skew 34:	0	Structure Flared 35:	0 No Oare
Route Minimum Vertical Clearance 10:	99.99 ft	Route Horizontal Clearance 47:	14.10 ft
Minimum Vertical Clearance Over Bridge 53:	100 ft		
Minimum Vertical Underclearance 54A:	N Feature not hwy or RR		
Minimum Vertical Underclearance 54B:	0 ft		

LOAD RATING AND POSTING			
Operating Rating 64:	HS 28	Operating Method 63:	1 LFR
Inventory Rating 66:	HS 21	Inventory Method 65:	1 LFR
Design Load 31:	SHS-20	Posting 70:	5 A Above legal loads
Posting Status 41:	A Open, no restriction		

APPRAISAL			
Bridge Rail 36A:	0 Substandard	Approach Rail 36C:	1 Meets Standards
Transition 36B:	0 Substandard	Approach Rail Ends 36D:	0 Substandard
Tr Evaluation on 67:	6 Equal Min Criteria	Deck Geometry 66:	6 Equal Min Criteria
Underclearance Vertical and Horizontal 69:	NA		
Waterway Adequacy 71:	7 Better than Min	Approach Alignment 72:	4 Minimum Tolerable
Scour Critical 113:	8 Stable Above Footing		

PROPOSED IMPROVEMENTS			
Bridge Cost 94:	\$0	Type of Work 75:	Unknown
Roadway Cost 95:	\$0	Length of Improvement 76:	0.0 mi
Total Cost 96:	\$0	Future AOT 114:	12
Year of Cost Estimate 97:	Unknown	Year of Future ADT 115:	2035

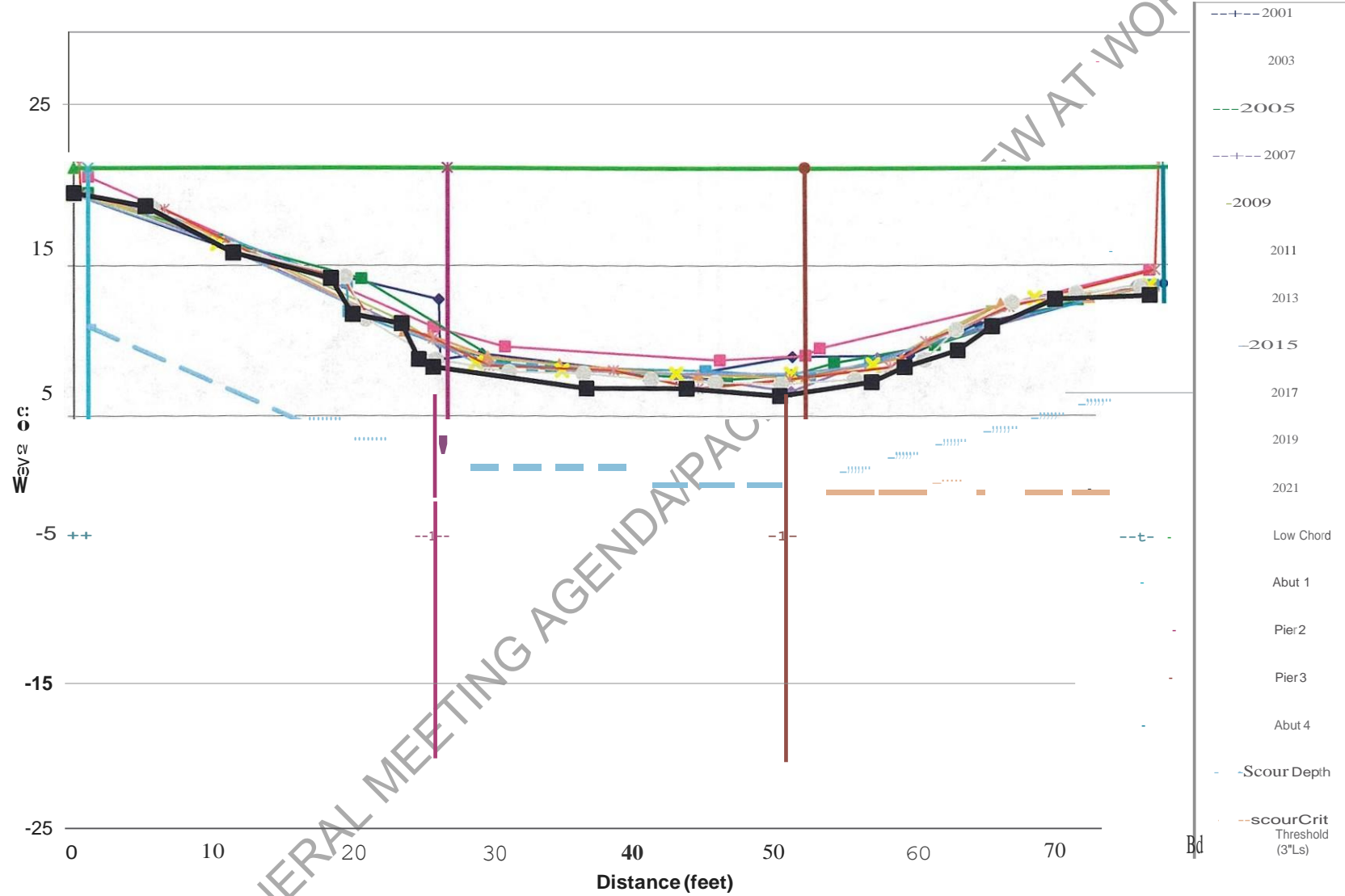
NAVIGATION DATA			
Navigational Control 38:	0 Permit Not Required		
Vertical Clearance 39:	0.0 ft	Horizontal Clearance 40:	0.0 ft
Pier Protection 111:	1 Not required	Lift Bridge Vertical Clearance 116:	0.011

INSP007_Inspection_SIA_English

Printed:Thu 7/1f':1

DRAFT GENERAL MEETING AGENDA/PACKET FOR REVIEW AT WORK SESSION

BN 445 Good River Soundings

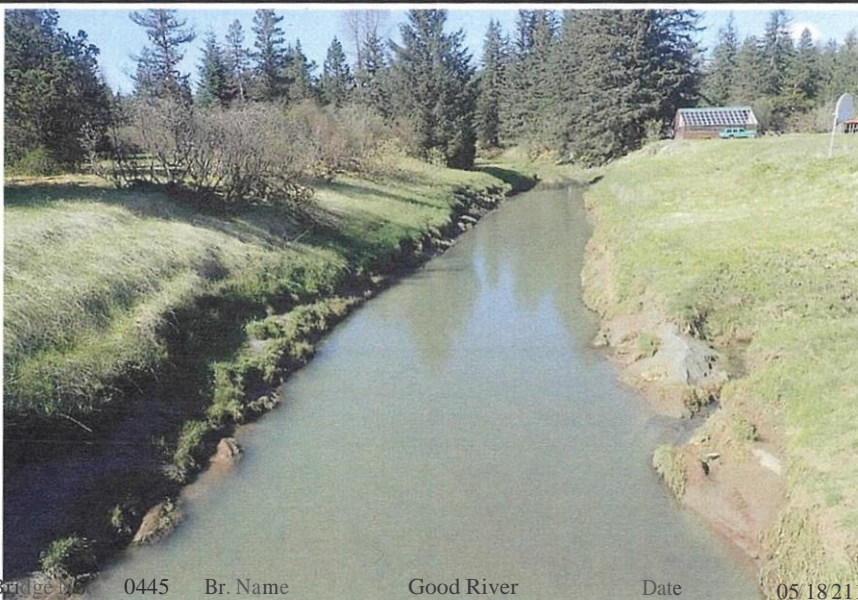




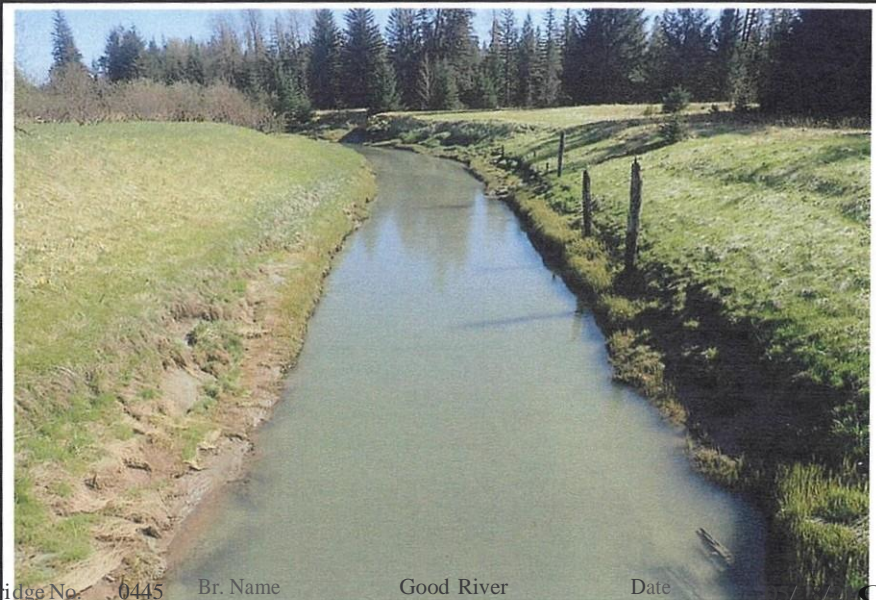
Bridge No. 0445 Br. Name Good River Date 05/18/21
Inspector Bailey / Daugherty Frame 1
Looking Ahead File P5180947.jpg



Bridge No. 0445 Br. Name Good River Date 05/18/21
Inspector Bailey / Daugherty Frame 2
Looking Back File P5180950.jpg



Bridge No. 0445 Br. Name Good River Date 05/18/21
Inspector Bailey / Daugherty Frame 3
Looking US File P5180948.jpg



Bridge No. 0445 Br. Name Good River Date 05/18/21
Inspector Bailey / Daugherty Frame 4
Looking DS File P5180949.jpg

O

DRAFT

SSION

is'

SION



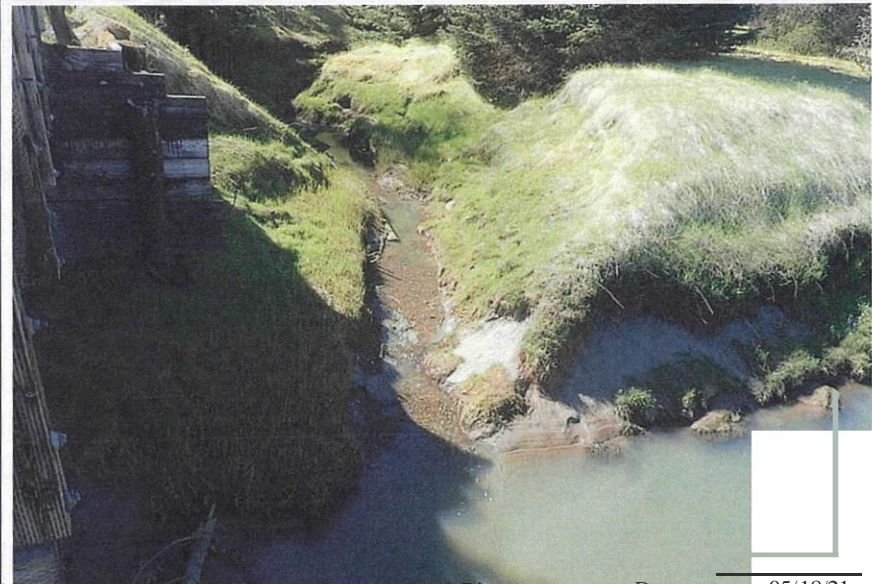
Bridge No. 0445 Br. Name Good River Date 05/18/21
Inspector Bailey / Daugherty Frame 5
NE US Bank File P5180951.jpg



Bridge No. 0445 Br. Name Good River Date 05/18/21
Inspector Bailey / Daugherty Frame 6
NE DS Bank File P5180952.jpg



Bridge No. 0445 Br. Name Good River Date 05/18/21
Inspector Bailey / Daugherty Frame 7
FE DS Bank File P5180954.jpg

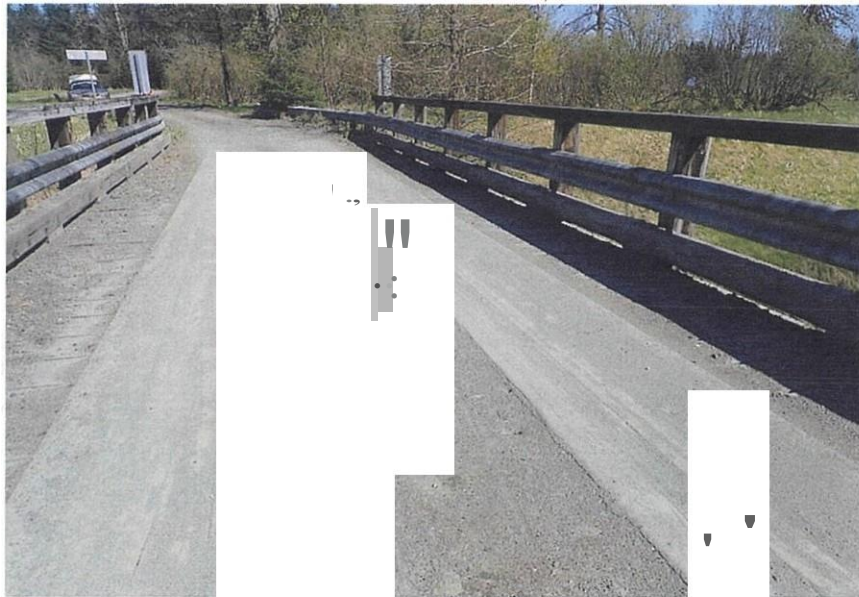


Bridge No. 0445 Br. Name Good River Date 05/18/21
Inspector Bailey / Daugherty Frame 8
FE US Bank File P5180953.jpg

O

DRAFT

11



Bridge No. 0445 Br. Name Good River Date 05/18/21
Inspector Bailey /Daugherty Frame 9
Typ. Deck File

P5180955.jpg



Bridge No. 0445 Br. Name Good River Date 05/18/21
Inspector Bailey /Daugherty Frame 10
NE DS Running Plank Damage File

P5180973.jpg



Bridge No. 0445 Br. Name Good River Date 05/18/21
Inspector Bailey /Daugherty Frame 11
Typ. Rail File

P5180956.jpg



Bridge No. 0445 Br. Name Good River Date 05/18/21
Inspector Bailey /Daugherty Frame 12
FE DS End Treatment File

P5180972.jpg

O

DRAFT

DRAFT GENERAL MEETING AGENDA/PACKET FOR REVIEW AT WORK SESSION

Bridge No. 0445 Br. Name Good River

NE Abotm•nl
Inspector

Date 05/18/21

File
Baile
y /
Daug

P5180958.jpg Pier 2 NE Face
herty

Bridge No. 0445 Br. Name Good River

Frame

P5180961.jpg

File

O

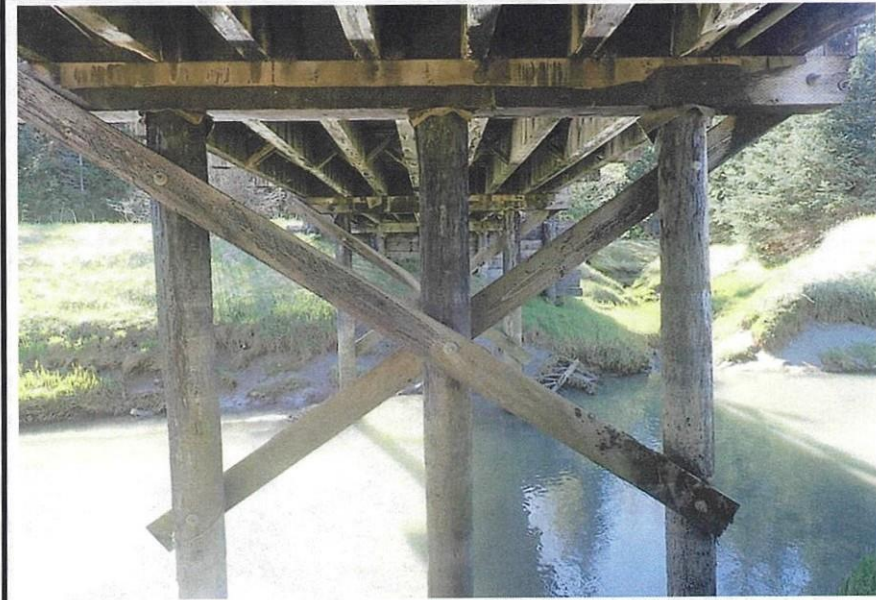
ITJ



Bridge No. 0445 Br. Name Good River Date 05/18/21
 Inspector Bailey / Daugherty Frame 13
 DS Elevation File P5180957.jpg



Bridge No. 0445 Br. Name Good River Date 05/18/21
 Inspector Bailey / Daugherty Frame 14
 Typ. Underside File P5180959.jpg

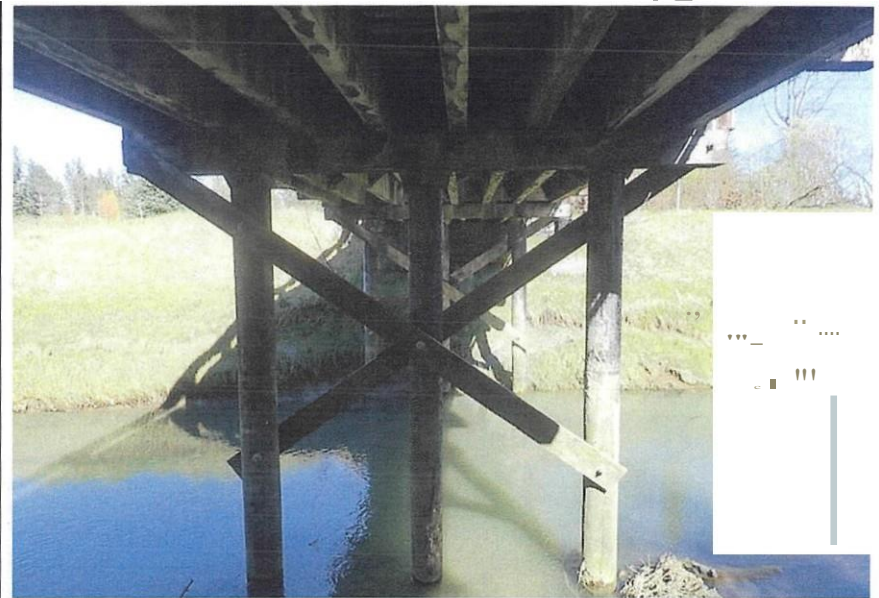


Date 05/18/21

DRAFT



Bridge No. 0445 Br. Name Good River Date 05/18/21
 Inspector Bailey / Daugherty Frame 17
 Pier 2 NE Face of Cap File P5180960.jpg



Bridge No. 0445 Br. Name Good River Date 05/18/21
 Inspector Bailey / Daugherty Frame 18
 Pier 3 FE Face File P5180968.jpg



Bridge No. 0445 Br. Name Good River Date 05/18/21
 Inspector Bailey / Daugherty Frame 19
 FE Abutment File P5180966.jpg



Bridge No. 0445 Br. Name Good River Date 05/18/21
 Inspector Bailey / Daugherty Frame 20
 FE US Abutment File P5180967.jpg

O

DRAFT

m

DRAFT GENERAL MEETING AGENDA/PACKET FOR REVIEW AT WORK SESSION

Inspector
Gap under FE Abutment

O

E OS Wall

Br. Name Good River

Date 05/18/21 Bridge No. 0445

Br. Name Good River

P5180962.jpg

ITJ

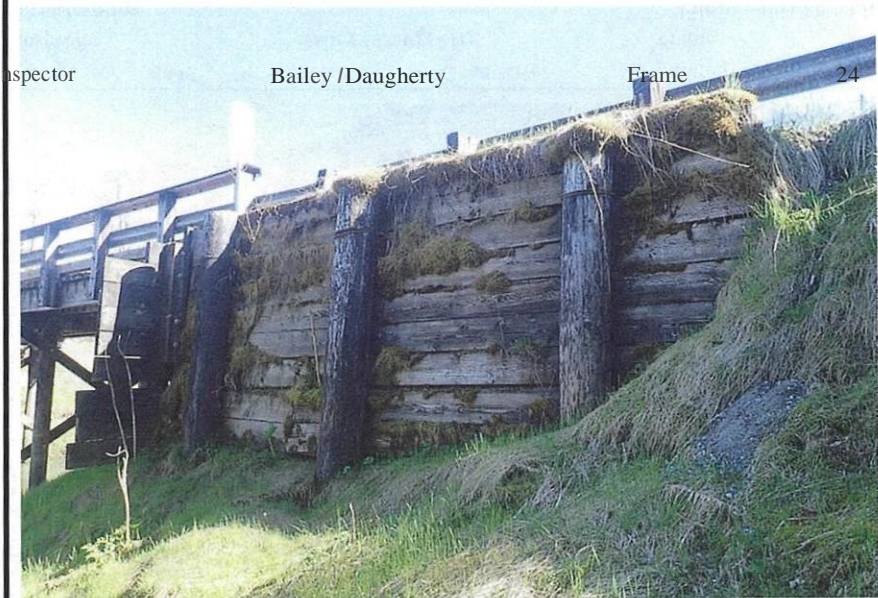
File P518097 1.jpg Typ.Stream Material

File



Inspector Bailey / Daugherty Frame 23

Bridge No. 0445 Br. Name Good River Date 05/18/21
 Bailey / Daugherty Frame 21
 File P5180970.jpg



Inspector Bailey / Daugherty Frame 24

Bridge No. 0445 Br. Name Good River Date 05/18/21
 Inspector Bailey / Daugherty Frame 22
 FE US Retaining Wall File P5180965.jpg



Bridge No. 0445



Date 05/18/21



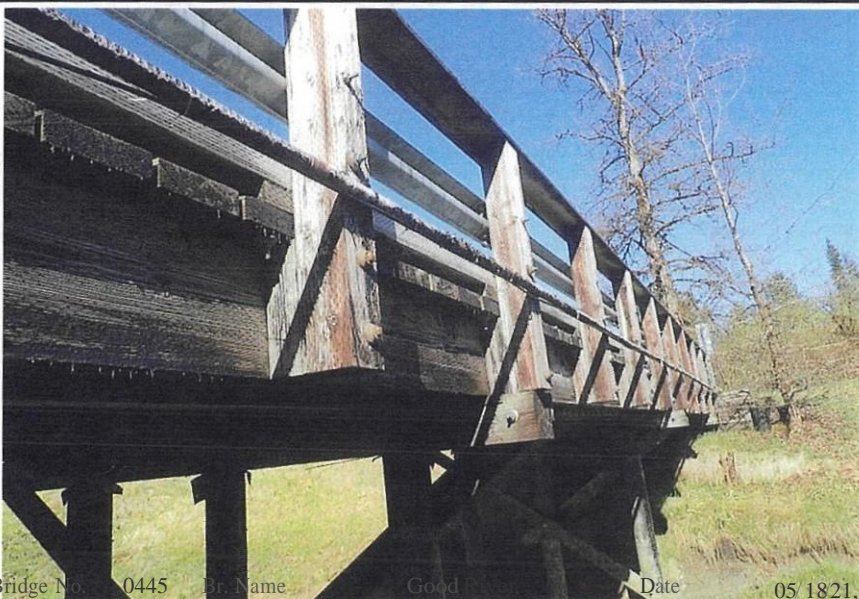
Br. Name Good River

Bridge No. 0445 Bailey / Daugherty Date 05/18/21
 Inspector DS Utility File P5180964.jpg
 Dissection ONE US of Bridge
 Ditch at NE US of

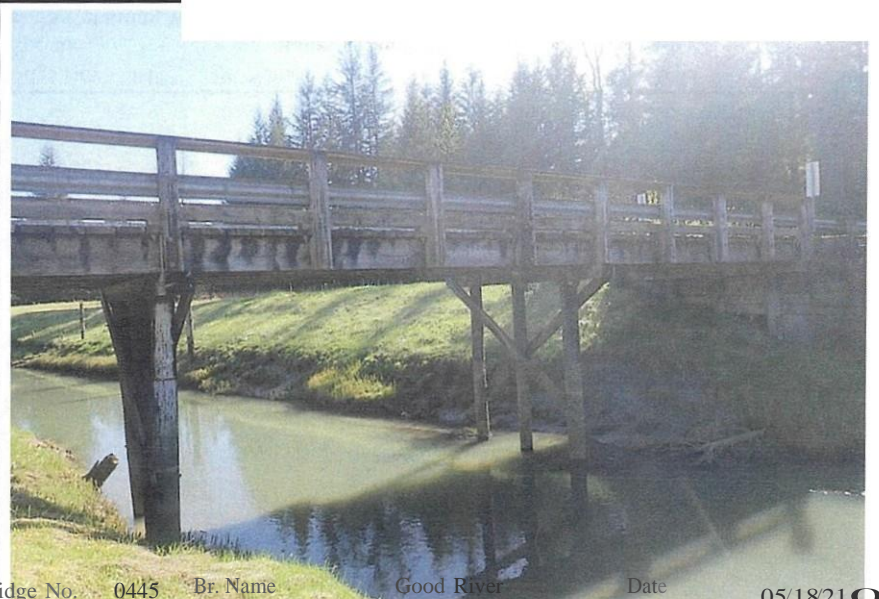


Br. Name Good River

Bridge No. 0445 Bailey / Daugherty Date 05/18/21
 Inspector DS Utility File P5180974.jpg
 Bank Erosion along Ditch at NE US of Bridge
 Bank Erosion along



Bridge No. 0445 Br. Name Good River Date 05/18/21
 Inspector DS Utility File P5180969.jpg
 Elevation



Bridge No. 0445 Br. Name Good River Date 05/18/21
 Inspector DS Utility File P5180963.jpg
 US

O

DRAFT

oai:si192021:

NE. Min. View Road From

Left

Right

Di

Flow

F.E. End of Spruce Ln. To

North Direction

Apprh Rdwy Width (ft) 18.00

Est Camber (inch) 0.00

Bridge Length (ft) 40.00

Bridge Width 0-0 (ft) 19.50

CDSRoute

CDS Mile 0.1

Left							
Type	BRIDGE RAIL	Ht (in)	Curb Height (in)	Transition Type	Ht (in)	Approach Type/Post	Leading End Treat
Timber bullrail		10.50	0.00	None		None	
Right							
Type	BRIDGE RAIL	Ht (in)	Curb Height (in)	Transition Type	Ht (in)	Approach Type/Post	Leading End Treat
Timber bullrail		10.50	0.00	None	11	None	

Lt	Rt	Near End	SIGNS	Lt	Rt	Far End
		Object Markers	Load Limit Wording or Other Signs			Object Markers
		<input type="radio"/> Restricted Width				<input type="radio"/> Restricted Width
		<input type="radio"/> Vertical Clear				<input type="radio"/> Vertical Clear
		<input type="radio"/> Load Limit				<input type="radio"/> Load Limit
		<input type="radio"/> Name Place				<input type="radio"/> Name Place

Deck Material Thk(Inches)

Timber 11 5.25

Location Measured

Edge of Deck

Wear Surface Thk (Inches)

Timber Run Pl 2.00

Wear Location

Edge of Deck

Drive Condition

jGood

Locality

Route

Gustavus

SPRUCE LANE

Utilities

Kind	Size	Location	Owner
OMC	2.5" diameter	Exterior of US girder	Electric company
PVC	2.5" diameter	Exterior of US girder	Phone company

Bridge No. 2310, SPRUCE LANE BRIDGE

Work Candidates

Inspected 011:051192021

Priority	Description	Quantity	Work Needed
Medium	Misc-Provide Access for Inspection (EA)	2	Remove fill from sides of girders at ends. Remove gravel from bridge deck.
Low	Misc-Install Sign	2	Install place name signs.

Bridge No. 2310, SPRUCE LANE BRIDGE

Element Inspection

Inspected 011:051192021

Element	Description	Observations
31	Timber Deck	Gravel and debris collected along bullrail. Deck clips covered with white corrosion and spots of rust. US face has splits in ends of deck planks, about 10%.
> 510	Wearing Surfaces	Running planks covered with packed gravel up to 1.5 inches deep, unable to inspect thoroughly. From 2019 inspection: Running planks worn. FE US: 1 board split. (5 feet) Running planks end 11 inches from each US and OS edge of deck.
111	Timber Open Girder/Beam	Beam 1 NE: Gravel along exterior burying bottom edge for 3 feet. Beam 5 NE: Gouge on US face at NE Abutment 25 inches up to 1/2 inch deep; Gravel along exterior burying bottom edge for 5 feet. Beam 5 FE: Abrasive damage on DS face at 2nd deck clip from FE Abutment; Gravel and debris along exterior burying bottom edge for 2 feet.
216	Timber Abutment	End of mudsills covered with thick layer of soil and gravel. Interior bays covered in mud and water. NE and FE geocell pockets only half full of material. NE Geotextile cloth visible from CL to OS edge of bridge. FE Bay 2 diaphragm has what appears to be squirrel nest built in diaphragm. NE Backwall, top plank rotated toward NE with gap that closes toward OS. US corner rotation measurements: - 2021: 1.75 inches V over 16 inches H - 2019: 125 inches H over 16 inches V FE Backwall, top plank rotated toward FE with cap up to 0.5 inches. US corner rotation measurements: - 2021: 125 inches H over 1575 inches V - 2019: 2 inches H over 20 inches V
332	Timber Bridge Railing	Minor splits along rail typical. US rail has abrasion marks along the NE half of bridge. NE DS: Rail corner has 5 inches of section bss, sounds solid beneath.
600	Signs Smart Flag	Name plate signs missing.

Br No: 2310	SPRUCE LANE BRIDGE	Date: 5/19/2021	09 Odd 2021 2310
INSPECTOR: Hannah Bailey	ASSISTANT: Leslie Daugherty	Weather: Cloudy	Temperature: 45 F

HYDRAULICS REPORT

Inspection To Mud line At All Piers and Abuts? <u>Yes</u>	Apparent HW <u>No</u>	Stream Bottom Material
	AHW Comments	
	Bank Erosion <u>No</u>	Sand
	Erosion Comments	Silt
Activiti	Drift Comments	Gravel
Drift <u>None</u>		
Riprap Condition: Sparse on abutments, but appears to be working.	Other Hydraulic Comments	Drainage ditch at FE OS along road. NE DS pipe appears to be dry.

SOUNDINGS

Measured At Surface Top Curb Location Upstream

Soundings Report		All measurements in feet		09 Odd 2021 2310
Horiz Dist from NE	Substr Unit No.	Vert Dist to Water Surface	Vert Dist to Stream Bottom	Remarks
0.00		0.0	3.0	Begin Bridge
5.40		0.0	3.5	
10.80		0.0	4.8	
14.50		0.0	6.1	EOW
19.60		0.0	7.8	
25.10		0.0	6.0	EOW
28.10		0.0	4.8	
33.10		0.0	4.2	
39.80		0.0	3.0	End Bridge

Structure Inventory and Appraisal Sheet (English Units)

Bridge Key: 2310		Agency ID: 2310		On/Off System: Off System		SR: 88.9		SD/FO/ND: ND	
------------------	--	-----------------	--	---------------------------	--	----------	--	--------------	--

IDENTIFICATION				INSPECTION					
State 1:	02 Alaska	Structure Number 6:	2310	Frequency 91:	24 months	Inspection Date 90:	05/19/2021	Next Inspection:	05/19/2023
Facility Carried 7:	SPRUCE LANE	Location 9:	MILE POINT 0.1	FC Freq. 92A:	NA	FC Insp. Date 93A:	NA	Next FC Inspection:	NA
Rte(On/Under)SA:	Route On Structure	Rte Signing Prefix 58:	SCity Street	UW Freq. 929:	NA	UW Insp. Date 938:	NA	Next UW Inspection:	NA
Level of Service SC:	0	Rte. Number 50:	00000	SI Freq. 92C:	NA	SI Date 93C:	NA	Next SI:	NA
Directional Suffix SE:	0 N/A	% Responsibility:							
SHO District 2:	03 Southcoast	County Code 3:	Hoonah-Angoon Census						
Place Code 4:	Gustavus	Mile Post 11:	0.100 mi						
Feature Intersected 6:	SPRUCE LANE BRIDGE								
Latitude 16:	58d 25' 25.0"	Longitude 17:	135d 45' 26.0"						
Border Bridge Code 98:	Util < known (P)								
Border Bridge No. 99:	NA								

STRUCTURE TYPE AND MATERIALS				CLASSIFICATION			
Number of Approach Spans 46:	0	Number of Spans Main Unit 45:	1	Defense Highway 100:	0 Not a STRAHNET hwy	Parallel Structure 1a1:	Not bridge exists
Main Span Mat'l and Type 43NB:				Traffic Direction 1a2:	22-way traffic	Temporary Structure 103:	No
	7 Wood or number		2 Stringer/Girder	Highway System 104:	a Not on NHS	NBIS Length 112:	Long Enough
Appr Span Mat'l and Type 44NB:				Facility 20:	3 On free road	Functional Class 26:	09 Rural local
	NA		NA	Nat'l. Network 110:	0 Not on truck network	Historical Sig. 37:	5 Not eligible for NRHP
Deck Type 107:			a Wood or Timber	Owner 22:	City or Municipal Highway Agency		
Wearing Surface 108A:			7 Wood or Timber	Custodian 21:	City or Municipal Highway Agency		
Membrane 1088:			0 None				
Deck Protection 108C:			0 None				

AGE AND SERVICE				CONDITION			
Year Built 27:	2014 Year Reconstructed 106:			Deck 58:	a Very Good	Super 59:	8 Very Good
Type of Service on 4:ZA:	1 Highway			CM nne/Ch. Protection 61:	7 Minor repairs needed	Sub 60:	a Very Good
Type of Service under 428:	5 Waterway					Culvert 62:	NA
Lanes on 28A:	2	Lanes under 268:					
ADT 29:	10 Truck ADT 109: 1%	Detour Length 19: 12.4 mi					
		Year or ADT 30: 2016					

GEOMETRIC DATA				LOAD RATING AND POSTING			
Length Max Span 48:	3500 ft	Structure Length 49:	4a.00 ft	Operating Rating 64:	HS 33	Operating Method 63:	1 LFR
Curb/Side Walk/MDLH LSOA:	00 ft	Curb/Sidewalk Width R 508:	00 ft	Inventory Rating 66:	HS 21	Inventory Method 65:	1 LFR
Width Curb to Curb 51:	18.0 ft	Deck - I/MDLH Out to Out 52:	20.0 ft	Design Load 31:	SHS-20	Posting 70:	5 AVA Above legal loads
Approach Roadway Width 32:	18.00 ft	Median 33:	0 No median	Posting Status 41:	A Open, no restriction		
(w/shoulders)							
Deck Area:	800.0 sq ft						
Skew 34:	a	Structure Flared 35:	a No flare				
Route Minimum Vertical Clearance 10:	99.99 ft	Route Horizontal Clearance 47:	18.00 ft				
Minimum Vertical Clearance Over Bridge 63:	100.0 ft						
Minimum Vertical Underclearance 54A:	N Feature not hwy or RR						
Minimum Vertical Underclearance 54B:	0 ft						
Minimum Lateral Underclearance SSA:	N Feature not hwy or RR						
Minimum Lateral Underclearance R SSA:	a.0 ft						
Minimum Lateral Underclearance L 56:	a.0 ft						

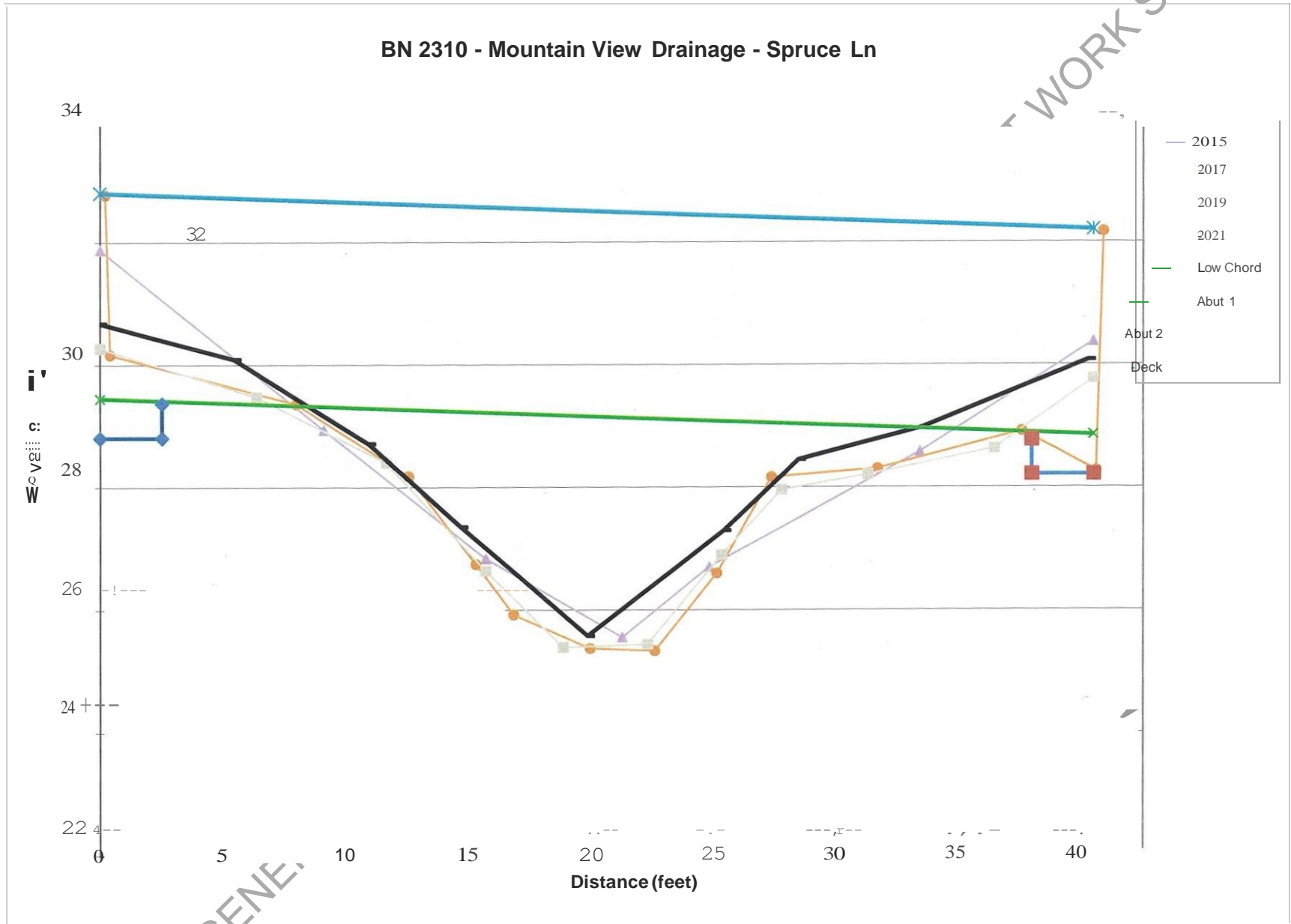
APPRAISAL			
Bridge Rail 36A:	0 Substandard	Approach Rail 36C:	a Substandard
Transition 36B:	0 Substandard	Approach Rail Ends 36D:	0 Substandard
Site Evaluation 67:	8 Equal Defects	Deck Geometry 68:	4 Minimum Tolerable
Underclearance, Vertical and Horizontal 69:	N/A		
Waterway Adequacy 71:	5 Somewhat Better than Min	Approach Alignment 72:	6 Equal Min Criteria
Scour Critical 113:	7 Countermeasures in place		

PROPOSED IMPROVEMENTS			
Bridge Cost 94:	S Type of Work 75:	Unknown	
Roadway Cost 95:	S Length of Improvement 75:	00 ft	
Total Cost 96:	S Future ADT 114:	14	
Year or Cost Estimate 97:	Year of Future ADT 115:	2035	

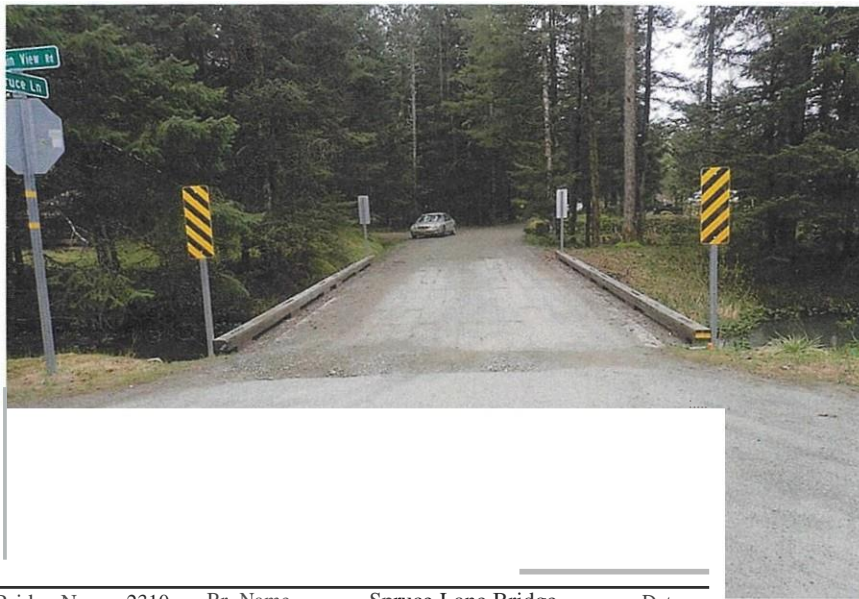
NAVIGATION DATA			
Navigation Control 38:	a Permit Not Required		
Vertical Clearance 39:	00 ft	Horizontal Clearance 40:	a.0 ft
Pier Protection 111:	1 Not required	Lift Bridge Vertical Clearance 116:	0 ft

O

DRAFT GENE.



WORK SESSION



Bridge No.	2310	Br. Name	Spruce Lane Bridge	Date	05/19/21
Inspector		Bailey / Daugherty		Frame	1
Looking Ahead				File	P5191031.jpg



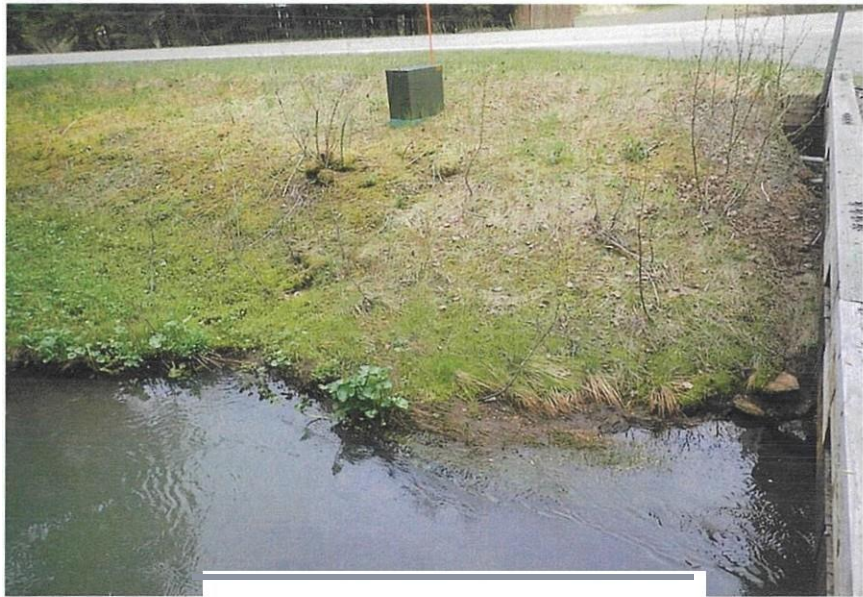
Bridge No.	2310	Br. Name	Spruce Lane Bridge	Date	05/19/21
Inspector		Bailey / Daugherty		Frame	2
Looking Back				File	P5191034.jpg



Bridge No.	2310	Br. Name	Spruce Lane Bridge	Date	05/19/21
Inspector		Bailey / Daugherty		Frame	3
Looking US				File	P5191032.jpg



Bridge No.	2310	Br. Name	Spruce Lane Bridge	Date	05/19/21
Inspector		Bailey / Daugherty		Frame	4
Looking OS				File	P5191033.jpg



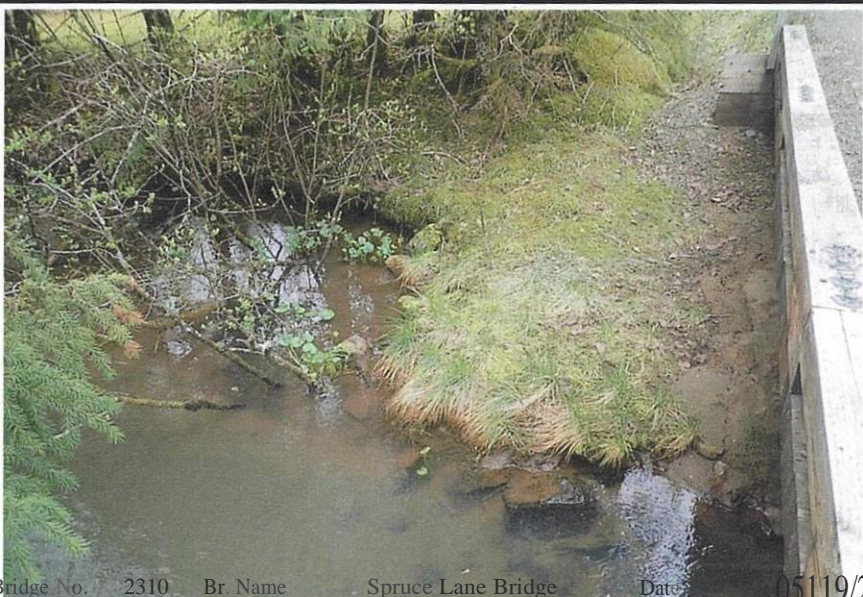
Bridge No. 2310 Br. Name Spruce Lane Bridge Date 05/19/21
 Inspector Bailey /Daugherty Frame 5
 NE US Bank File

P5191035.jpg



Bridge No. 2310 Br. Name Spruce Lane Bridge Date 05/19/21
 Inspector Bailey /Daugherty Frame 6
 NE OS Bank File

P5191036.jpg



Bridge No. 2310 Br. Name Spruce Lane Bridge Date 05/19/21
 Inspector Bailey /Daugherty Frame 7
 FE OS Bank File

P5191038.jpg



Bridge No. 2310 Br. Name Spruce Lane Bridge Date 05/19/21
 Inspector Bailey /Daugherty Frame 8
 FE US Bank File

P5191037.jpg

O

DRAFT

ITJ



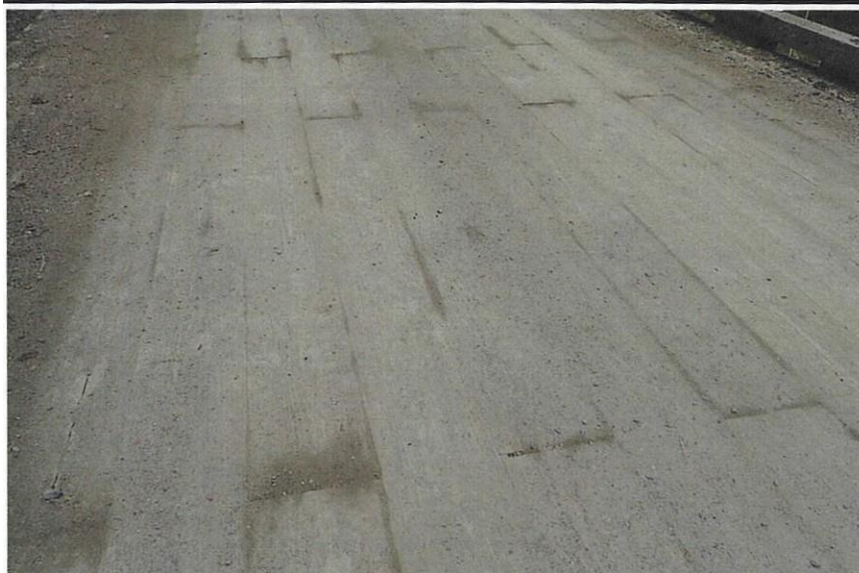
Bridge No. 2310 Br. Name Spruce Lane Bridge Date 05/19/21
 Inspector Bailey /Daugherty Frame 9
 US Elevation File

P5191042.jpg



Bridge No. 2310 Br. Name Spruce Lane Bridge Date 05/19/21
 Inspector Bailey /Daugherty Frame 9
 DS Elevation File

P5191041.jpg



Bridge No. 2310 Br. Name Spruce Lane Bridge Date 05/19/21
 Inspector Bailey /Daugherty Frame 11
 File

P5191039.jpg



Bridge No. 2310 Br. Name Spruce Lane Bridge Date 05/19/21
 Inspector Bailey /Daugherty Frame 12
 File

P5191040.jpg

QTyp. D"k

DRAFT

m



Bridge No. 2310 Br. Name Spruce Lane Bridge Date 05/19/21
 Inspector Bailey / Daugherty Frame 13
 Bullrail and Deck Thickness File P5191049.jpg



Bridge No. 2310 Br. Name Spruce Lane Bridge Date 05/19/21
 Inspector Bailey / Daugherty Frame 14
 NE Abutment File P5191051.jpg



Bridge No. 2310 Br. Name Spruce Lane Bridge Date 05/19/21
 Inspector Bailey / Daugherty Frame 15
 NE US Debris along Girder File P5191043.jpg



Bridge No. 2310 Br. Name Spruce Lane Bridge Date 05/19/21
 Inspector Bailey / Daugherty Frame 16
 NE US Backwall Rotation File P5191054.jpg

0

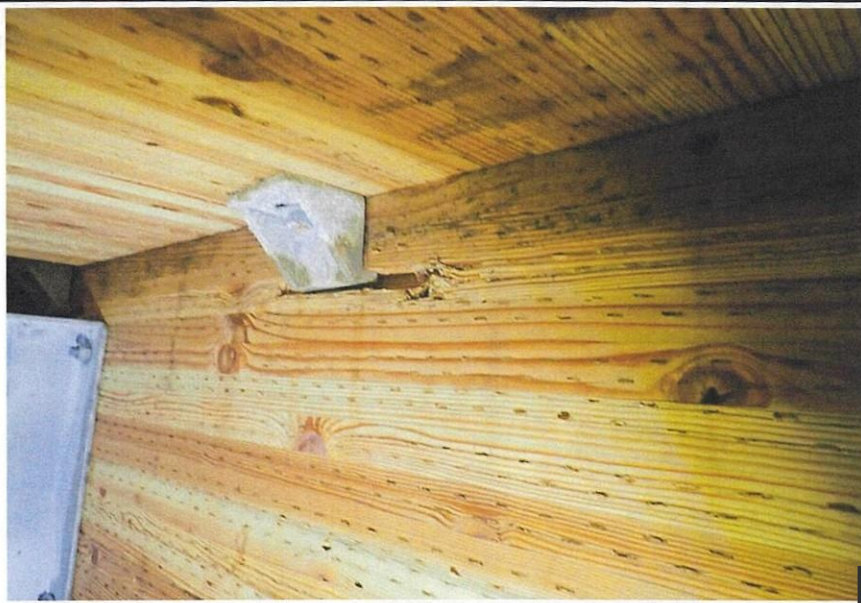
DRAFT



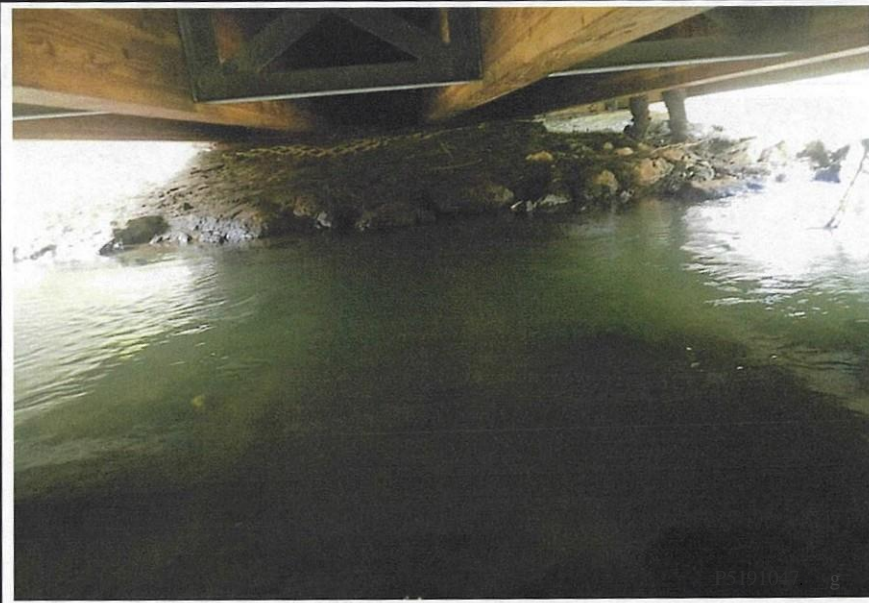
Bridge No. 2310 Br. Name Spruce Lane Bridge Date 05/19/21
 Inspector Bailey / Daugherty Frame 17
 Typ. Underside File P5191045.jpg



Bridge No. 2310 Br. Name Spruce Lane Bridge Date 05/19/21
 Inspector Bailey / Daugherty Frame 18
 Typ. End Diaphragm File P5191044.jpg



Bridge No. 2310 Br. Name Spruce Lane Bridge Date 05/19/21
 Inspector Bailey / Daugherty Frame 19
 FE US G<d" f>eck! lot D>m" File P5191050.jpg



Bridge No. 2310 Br. Name Spruce Lane Bridge Date 05/19/21
 Inspector Bailey / Daugherty Frame
 FE Abutment File

ITJ
O

DRAFT GENERAL MEETING AGENDA/PACKET FOR REVIEW AT WORK SESSION



Br. Name Spruce Lane Bridge

Bridge No. 2310 Br. Name Bailey / Daugherty Date 05/19/21
 Inspector Typ. Geocell Soil R Frame 21
 File P5191046.jpg



Bridge No. 2310 Br. Name Spruce Lane Bridge Date 05/19/21
 Inspector Bailey / Daugherty Frame
 File P5191048:
 Typ. Stream Material



Bridge No. 2310 Br. Name Spruce Lane Bridge Date 05/19/21
 Inspector Bailey / Daugherty Frame 23
 File P5191052.jpg
 NE Potholes



Bridge No. 2310 Br. Name Spruce Lane Bridge Date 05/19/21
 Inspector Bailey / Daugherty Frame 24
 File P5191053.jpg
 FE Potholes

DRAFT

Routine Inspection Report

Date: 5/19/2021

Br No 2320

TONG ROAD BRIDGE

Cloudy

45 F

INSPECTOR: Hannah Bailey

ASSISTANT: Leslie Daugherty

Initials HCB

Initials LKD

NE. Min. View Road From

Left

F.E. End of Tong Rd To

Right

Flow

Apprh Rdwy Width (ft) 24.00

Est Camber (inch) 0.00

Bridge Length (ft) 40.00

Bridge Width 0-0 (ft) 25.10

North Direction

CDS Route

CDS Mile 0.1

Left							
Type	BRIDGE RAIL	Ht (in)	Curb Height (in)	Transition Type	Ht (in)	Approach Type/Post	Leading End Treat
Timber bullrail		10.501	0.001	None		None	
Right							
Type	BRIDGE RAIL	Ht (in)	Curb Height (in)	Transition Type	Ht (in)	Approach Type/Post	Leading End Treat
Timber bullrail		10.501	0.001	None		None	

Lt. Rt. Near End		SIGNS		Lt. Rt. Far End	
Object Markers	Load Limit Wording or Other Sign	Object Markers	Load Limit Wording or Other Sign	Object Markers	Load Limit Wording or Other Sign
<input checked="" type="checkbox"/> Restricted Width		<input type="checkbox"/> Restricted Width		<input type="checkbox"/> Restricted Width	
<input type="checkbox"/> Vertical Clear		<input type="checkbox"/> Vertical Clear		<input type="checkbox"/> Vertical Clear	
<input type="checkbox"/> Load Limit		<input type="checkbox"/> Load Limit		<input type="checkbox"/> Load Limit	
<input type="checkbox"/> Name Place		<input type="checkbox"/> Name Place		<input type="checkbox"/> Name Place	

Deck Material	Thk(Inches)	Wear Surface	Thk (Inches)	Drive Condition	Route
JGiu Lam	5.13	J Timber Run P11	2.00	Good	
Location Measured		Wear Location			
		J Edge of Deck			
Utilities					
ITONG ROAD					
J Edge of Deck	Kind	Size	Location	Owner	
RMC		2" diameter	DS exterior face	Unknown	
PVC		4" diameter	US exterior face	Unknown	

Bridge No. 2320, TONG ROAD BRIDGE

Work Candidates

Inspected on: 05/19/2021

Priority	Description	Quantity	Work Needed
Medium	Misc-Remove Vegetation (EA)	1	Remove gravel from deck.
Low	Substructure-Clean Abutment / Pier Seats (LF)	4	Clean debris and gravel from mudsills at corners.
Low	Misc-Install Sign (EA)	2	Install place name signs.

Bridge No. 2320, TONG ROAD BRIDGE

Element Inspection

Inspected on: 05/19/2021

Element Description		Observations
31	Timber Deck	Shoulders covered with gravel and debris. Several deck clips turned, but appear to be functioning. Bay 2 FE: Water leaking through deck.
> 510	Wearing Surfaces	Wearing surface is covered in packed gravel up to 3 inches deep. Unable to thoroughly inspect wearing surface. Unable to verify from 2019: 1 board with 0.5 inch x 10 feet x 1 foot section loss.
> 1140	Decay/Section Loss	US 2nd bull rail connection from FE: 12 inch x 4 inch section of deck missing where bull rail connection bolts are.
111	Timber Open Girder/Beam	Several deck clips twisted and gouging into beams. Beam 2 NE: US face at bottom, two gouges about 10 feet from NE Abutment (8 inches x 3 inches and 1 inch x 3 inches). Beam 3 NE: US top corner gouge about 8 feet from NE Abutment (6 inches x 1 inch). Beam 5 FE: OS face at Abutment 2 gouge about 9 inches from top (12 inches x 1 inch).
216	Timber Abutment	Mudsills wet and covered by mud. Exterior corners buried by leaves, dirt, and gravel. NE and FE backwalls top plank rotated. As a result, dirt coming through gaps up to 0.5 inches wide onto mudsills. NE US rotation: - 2021: 1 inch H over 17 inches V - 2019: 15 inches H over 18 inches V FE US rotation: - 2021: 2.5 inches H over 16.75 inches V - 2019: 2 inches H over 36 inches V
332	Timber Bridge Railing	NE US rail 2 foot section of minor gouges.
600	Signs Smart Flag	Name plate signs are not present.
609	Utility Smart Flag	Abutment 1 has cable utility base on ground. Originates from utility box on NE of OS beam.

Br No 2320

TONG ROAD BRIDGE

date: 5/19/21

09 Odd 2021 2320

INSPECTOR: Hannah Bailey

ASSISTANT: Leslie Daugherty

Weather Cloudy

Temperature 45 F

HYDRAULICS REPORT

Inspection To Mudline At All Piers and Abuts?

Yes

Apparent HW

No

Stream Bottom Material

AHW Comments

Bank Erosion

Yes

Stream Bottom Material

Sand

Erosion Comments

US and DS trees leaning into river, does not appear new.

Stream Bottom Material

Silt

Activities

Drift Comments

Several sticks caught in trees OS

Stream Bottom Material

Gravel

Drift

Light

Other Hydraulic Comments

Riprap

Appears adequate. Geocell erosion mats in place, not all pockets filled to top.

SOUNDINGS
Measured At Surface I Top Curb
Location j Upstream

Table with 5 columns: Horiz Dist from NE, Substr Unit No., Vert Dist to Water Surface, Vert Dist to Stream Bottom, Remarks. It contains 12 rows of sounding data from 0.00 to 40.50 feet.

Abbreviations: FE=Far End, NE=Near End, DS=Downstream, US=Upstream, LT=Left, RT=Right, P=Pier, FB=Floorbeam, G=Girder, S=Span

Structure Inventory and Appraisal Sheet (English Units)

Bridge Key: 2320

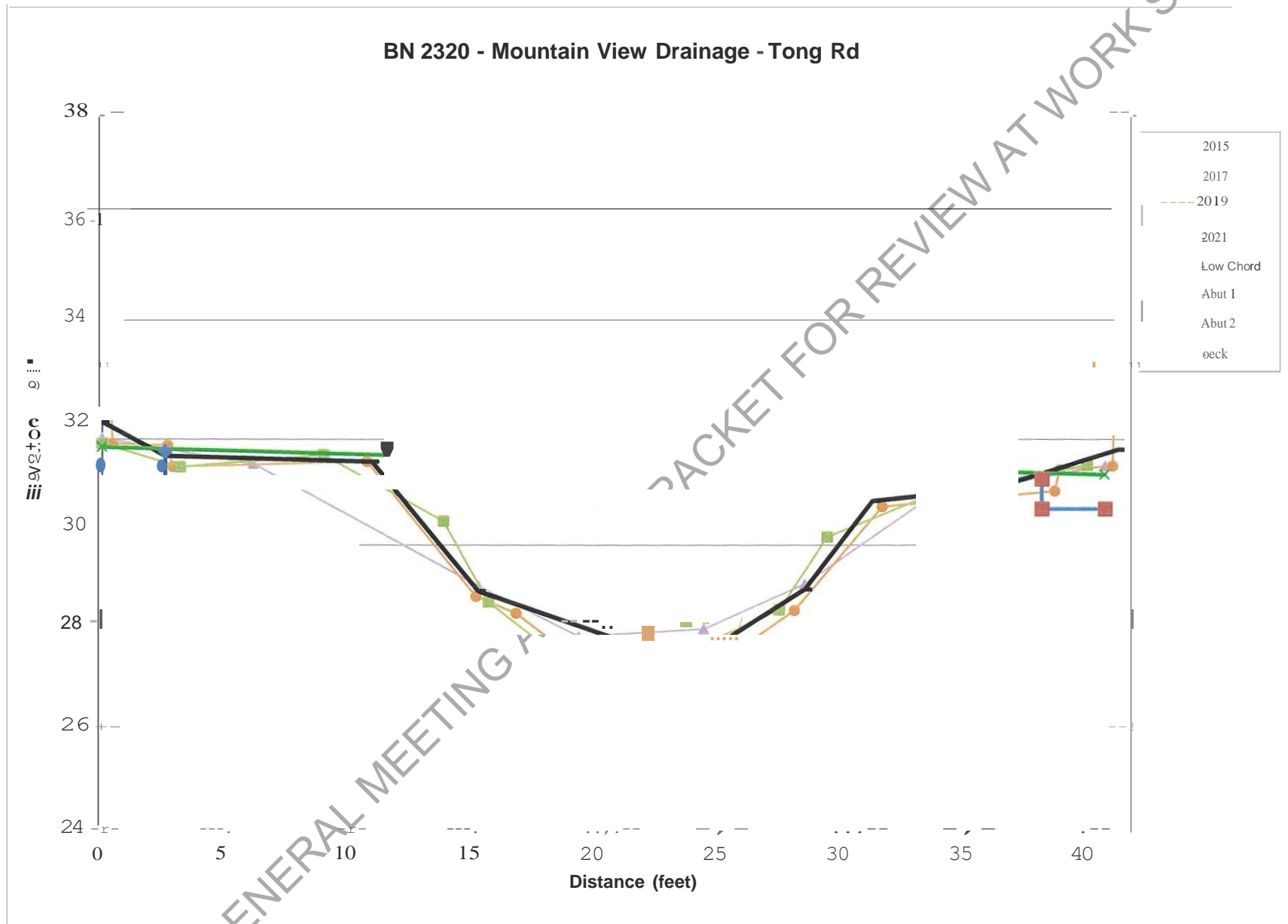
Agency ID: 2320

On/Off System: Off System

SR: 91.9

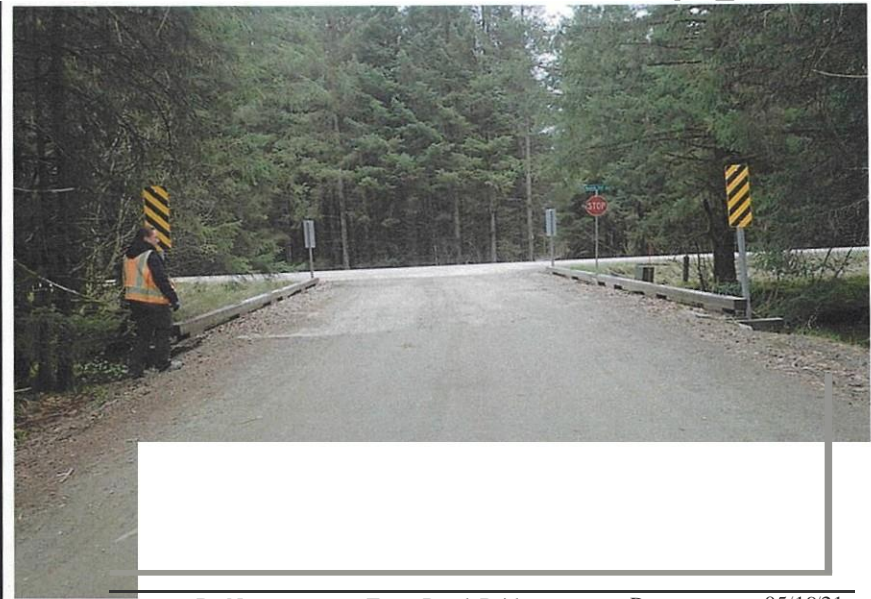
SD/FO/ND: ND

IDENTIFICATION				INSPECTION			
State 1:	02 Alaska	Struc Number 8:	2320	Frequency 91:	24 months	Inspection Date 90:	05/19/2021
Facility Canied 7:	TONG ROAD	Location 9:	MILE POINT 0.1	Next Inspection:			05/19/2023
Rte. (On/Under) 5A:	Route On Structure	Rte Signing Prefix 56:	5 City Street	FC Freq. 92A:	NA	FC Insp. Date 93A:	NA
Level of Service 5C:	0	Rte. Number 5D:	00000	Next FC Inspection:	NA		
Directional Suffix SE:	ON/A	Yo Responsibility:		UW Freq. 92B:	NA	UW Insp. Date 93B:	NA
SHD District 2:	03 Southcoast	County Code 3:	Hoonah Angoon Census	Next UW Inspection:	NA		
Place Code 4:	Gustavus	Mile Post 11:	0.100mi	SIFreq. 92C:	NA	SI Date 93C:	NA
Feature Intersected 6:	TONG ROAD BRIDGE			Next SI:	NA		
Latitude 16:	SSC 25' 38.0"	Longitude 17:	135d 45' 33.0 ..	CLASSIFICATION			
Border Bridge Code 98:	Unknown (P)			Defense Highway 101:	0 Not a STRAHNET Hwy	Parallel Structure 101:	Not bridge exists
Border Bridge No. 99:	NA			Tr. attic Direction 102:	2 2-way traffic	Temporary Structure No 103:	
				Highway System 104:	0 Not en NHS	NBIS Length 112:	Long Enough
				Toti Facility 20:	3 On free road	Functional Class 26:	09 Rural Local
				Natl. Network 110:	0 Not on truck netw O-k	Historical Sig. 37:	5 Not eligible for NRHP
				Owner 22:	City or Municipal Highway Agency		
				Custodian 21:	City or Municipal Highway Agency		
STRUCTURE TYPE AND MATERIALS				CONDITION			
Number of Approach Spans 46:	0	Number of Spans Main Unit 4S:	1	Deck 58:	8 Very Good	Super 59:	9 Very Good
Main Span Mat'l and Type 43NB:				Channel/Ch. Protection 61:	7 Minor repairs needed	Sub 60:	8 Very Good
	7 Wood or Timber		2 Stringer/Girder			Culvert 62:	NA
Appr Span Mat'l and Type 44AIB:				LOAD RATING AND POSTING			
	N/A		NA	Operating Rating 64:	HS 32	Operating Method 63:	1 LFR
Deck Type 107:			8 Wood or Timber	Inventory Rating 66:	HS 22	Inventory Method 65:	1 LFR
Wearing Surface 108A:			7 Wood or Timber	Design Load 31:	5 HS-20	Posting 70:	5 A/Above legal loads
Membrane 108B:			0 None	Posting Status 41:	A Open, no restriction		
Deck Protection 108C:			0 None	APPRAISAL			
				Bridge Rail 36A:	0 Substandard	Approach Rail 36C:	0 Substandard
				Transition 36B:	0 Substandard	Approach Rail Ends 36D:	0 Substandard
				Str Evaluation 67:	8 Equal Desirable	Deck Geometry 68:	6 Equal Min Criteria
				Underclearance, Vertical and Horizontal 69:	NA		
				Waterway Adequacy 71:	6 Equal Min Criteria	Approach Alignment 72:	6 Equal Min Criteria
				Scour Critical 113:	7 Countermeasures in place		
AGE AND SERVICE				PROPOSED IMPROVEMENTS			
Year Built 27:	2015	Year Reconstructed 106:		Bridge Cost 94:		S Type of Work 7S:	Unknown
Type of SeMo on 42A:	1 Highway			Roadway Cost 95:		S Length of Improvement 76:	0.0 ft
Type of SeMo under 42B:	5 Waterway			Total Cost 96:		S Future ADT 114:	1S
Lanes on 28A:	2	Lanes under 28B:	0	Year of Cost Estimate 97:		Year or Future ADT 115:	2035
ADT 29:	10	Truck ADT 109.1%		NAVIGATION DATA			
		Year of ADT 30:	2018	Navigation Control 38:	0 Permit Not Required		
				Vertical Clearance 39:	0.0 ft	Horizontal Clearance 40:	0.0 ft
				Pier Protection 111:	1 Not required	Lift Bridge Vertical Clearance 116:	0.0 ft
GEOMETRIC DATA							
Length Max Span 48:	37.50 ft	Structure Length 49:	400.0 ft				
Curb/Sawtooth IMdth LSOA:	0.0 ft	Cut/Sidewalk IMdth R SOB:	0.0 ft				
IMdth Curb to Curb 51:	24.0 ft	Deck IMdth Out to Out 52:	25.1 ft				
Approach Roadway IMdth 32:	18.00 ft	Median 33:	0 No median				
(w/shoulders)							
Deck Area:	104.0 sq ft						
Skew 34:	0	Structure Bred 35:	0 No flare				
Route Minimum Vertical Clearance 10:	99.99 ft	Route Horizontal Clearance 47:	24.00 ft				
Minimum Vertical Clearance Over Bridge 53:	100.0 ft						
Minimum Vertical Underclearance 54A:	N Feature not hwy or RR						
Minimum Vertical Underclearance 54B:	0 ft						
Minimum Lateral Underclearance 55A:	N Feature not hwy or RR						
Minimum Lateral Underclearance 55B:	0.0 ft						
Minimum Lateral Underclearance 56:	0 ft						





Bridge No.	2320	Br. Name	Tong Road Bridge	Date	05/19/21
Inspector	Bailey / Daugherty		Frame	1	
Looking Ahead			File	P5191004.jpg	



Bridge No.	2320	Br. Name	Tong Road Bridge	Date	05/19/21
Inspector	Bailey / Daugherty		Frame	2	
Looking Back			File	P5191007.jpg	



Bridge No.	2320	Br. Name	Tong Road Bridge	Date	05/19/21
Inspector	Bailey / Daugherty		Frame	3	
Look;og US			File	P5191005.jpg	



Bridge No.	2320	Br. Name	Tong Road Bridge	Date	05/19/21
Inspector	Bailey / Daugherty		Frame	4	
Look;og US			File	P5191006.jpg	



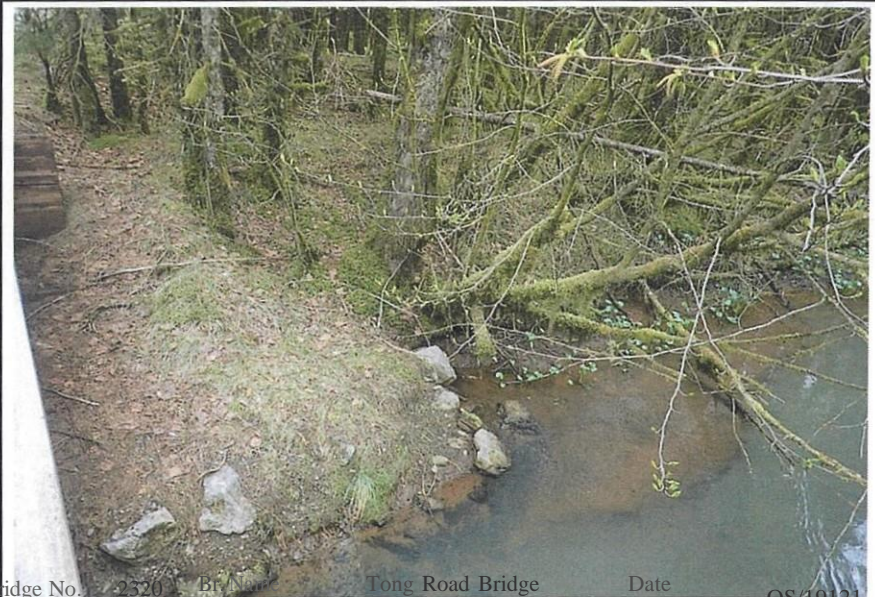
Bridge No. 2320 Br. Name Tong Road Bridge Date 05/19/21
Inspector Bailey / Daugherty Frame 5
NE US Bank File P5191008.jpg



Bridge No. 2320 Br. Name Tong Road Bridge Date 05/19/21
Inspector Bailey / Daugherty Frame 6
NE DS Bank File P5191009.jpg



Bridge No. 2320 Br. Name Tong Road Bridge Date 05/19/21
Inspector Bailey / Daugherty Frame 7
FE DS Bank File P5191011.jpg



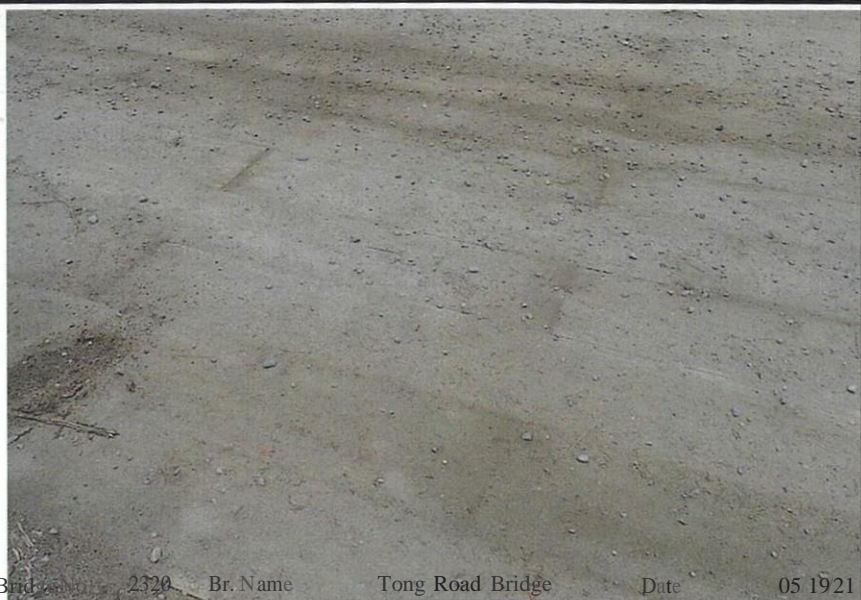
Bridge No. 2320 Br. Name Tong Road Bridge Date 05/19/21
Inspector Bailey / Daugherty Frame 8
FE US Bank File P5191010.jpg



Bridge No. 2320 Br. Name Tong Road Bridge Date 05/19/21
 Inspector Bailey / Daugherty Frame 9
 US Elevation File P5191016.jpg



Br. Name Tong Road Bridge
 Bridge No. 2320 Bailey / Daugherty Frame Date 05/19/21
 Inspector File 10
 DS Elevation File P5191015.jpg



Bridge No. 2320 Br. Name Tong Road Bridge Date 05/19/21
 File P5191012.jpg



Bridge No. 2320 Br. Name Tong Road Bridge Date 05/19/21
 Deck Thickness File P5191017.jpg

OTyp.D'k

Inspector

Bailey / Daugherty

Frame

11

Inspector

Bailey / Daugherty

Frame

12

3

m

DRAFT GENERAL MEETING AGENDA/PACKET FOR REVIEW AT WORK SESSION



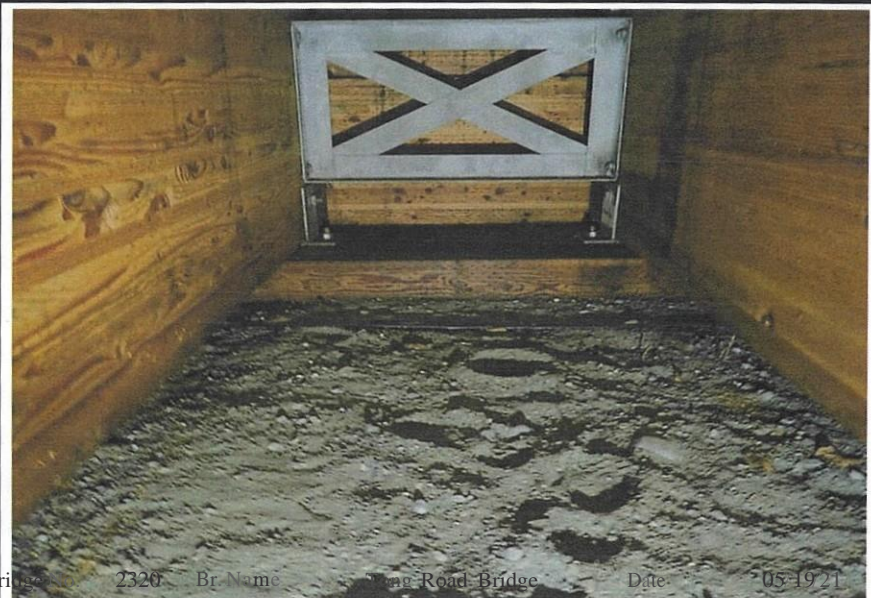
Bridge No. 2320 Br. Name Tong Road Bridge Date 05/19/21
 Inspector Bailey / Daugherty Frame 13
 Deck and Rail Dimensions File P5191018.jpg



Bridge No. 2320 Br. Name Tong Road Bridge Date 05/19/21
 Inspector Bailey / Daugherty Frame 14
 Typ. Rail File P5191014.jpg



Br Name Tong Road Bridge Date 05/19/21
 Inspector Bailey / Daugherty Frame 15
 Bridge No. 2320 NE Abutment File P5191019.jpg



Bridge No. 2320 Br. Name Tong Road Bridge Date 05/19/21
 Inspector Bailey / Daugherty Frame 16
 NE Abutment Utility Cable File P5191024.jpg

O

DRAFT

00



Bridge No. 2320 Br. Name Tong Road Bridge Date 05/19/21
 Inspector Bailey / Daugherty Frame 17
 NE US Backwall Rotation File P5191028.jpg



Bridge No. 2320 Br. Name Tong Road Bridge Date 05/19/21
 Inspector Bailey / Daugherty Frame 18
 NE DS Backwall Rotation File P5191029.jpg



Bridge No. 2320 Br. Name Tong Road Bridge Date 05/19/21
 Inspector Bailey / Daugherty Frame 19
 NE DS Utmty 80> File P5191027.jpg



Bridge No. 2320 Br. Name Tong Road Bridge Date 05/19/21
 Inspector Bailey / Daugherty Frame 20
 Typ. Unders ide File P5191020.jpg



Bridge No. 2320 Br. Name Tong Road Bridge Date 05/19/21
 Inspector Bailey / Daugherty Frame 21
 Typ. Diaphragm File P5191021.jpg



Bridge No. 2320 Br. Name Tong Road Bridge Date 05/19/21
 Inspector Bailey / Daugherty Frame 22
 FE Abutment File P5191022.jpg



Bridge No. 2320 Br. Name Tong Road Bridge Date 05/19/21
 Inspector Bailey / Daugherty Frame 23
 Typ. Soil Reinforcing File P5191023.jpg



Bridge No. 2320 Br. Name Tong Road Bridge Date 05/19/21
 Inspector Bailey / Daugherty Frame 24
 FE US Backwall Rotation File P5191030.jpg

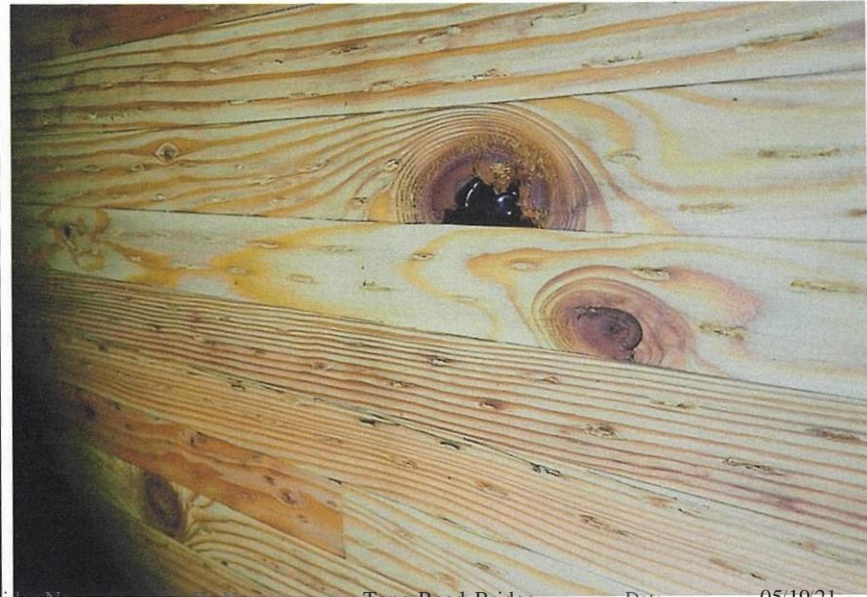
O

m

DRAFT



Bridge No.	2320	Br. Name	Tong Road Bridge	Date	05/19/21
Inspector			Bailey / Daugherty	Frame	25
Sign at NE				File	P5191013."



Bridge No.	2320	Br. Name	Tong Road Bridge	Date	05/19/21
Inspector			Bailey / Daugherty	Frame	26
Knot with Glu				File	P5191026."

Bridge No.	2320	Br. Name	Tong Road Bridge	Date	05/19/21
Inspector			Bailey / Daugherty	Frame	27
				File	

Bridge No.	2320	Br. Name	Tong Road Bridge	Date	05/19/21
Inspector			Bailey / Daugherty	Frame	28
				File	

O

ITJ

Routine Inspection 'fep()rt

Oat: 5/18/2021

Br No 2321 HARRY HALL CREEK BRIDGE

sunny

5S F

INSPECTOR: <Hannah Bailey ASSISTANT! Leslie Daugherty

> Initials

Hep,

>> initial LXD ><

NE. Mtn. View Road From

Left

Right 1'

D 121 Flow

F.E. End of Good Riv Rd To

North Direction

Apprh Rdwy Width (ft) 18.00

Est Camber (inch) 0.00

Bridge Length (ft) 60.00

Bridge Width 0-0 (ft) 20.40

CDS Route 295316

CDS Mile 0.1

Left				Right			
Type	BRIDGE RAIL	Ht (in)	Curb Height (in)	Transition Type	Ht (in)	Approach Type/Post	Leadng End Treat
Timber Side Mount		2a.00j	0.00j	W - Beam	30.00j	Timber	Buried
Type	BRIDGE RAIL	Ht (in)	Curb Height (in)	Transition Type	Ht (in)	Approach Type/Post	Leading End Treat
Timber Side Mount		2a.00j	0.001	W - Beam	30.00j	Timber	Buried

Lt. Rt. Near End	SIGNS	Lt. Rt. Far End
2J0 Object Markers	Load Limit Wording or Other Sign	00 Object Markers
Restricted Width	Narrow Bridge	2J Restricted Width
Vertical Clear		Vertical Clear
Load Limit		Load Limit
Name Place		Name Place

Deck Material Thk(Inches)

Timber 11 5.13

Locat on Measured

JEdge of Deck

Wear Surface Thk (Inches)

Timber Run Plj 2.00

Wear Location

JEdge of Deck

Drive Condition

JGood

Locality

Route

Gustavus

GOOD RIVER ROAD

Utilities

Kind	Size	Location	Owner
Schedule 40	2" diameter	DS exterior face	Unknown
RMC	2" diameter	DS exterior face	Unknown

Bridge No. 2321, HARRY HALL CREEK BRIDGE

Work Candidates

/11spectetl 011:051172021

Priority	Description	Quantity	Work Needed
High	Misc-Repair / Replace Utilities or Signs (EA)	4	Reattach object markers at NE US and FE US. Remove vandalizing on Narrow Bridge signs.
Low	Misc-Provide Access for inspection	4	All 4 corners: Remove soil prior to inspection.
Low	Misc-Install Sign (EA)	2	Install place name sign at each end of the bridge.

Bridge No. 2321, HARRY HALL CREEK BRIDGE

Element Inspection

Inspected 011: 05/17/2021

Element Description		Observations
31	Timber Deck	Deck clips beginning to rust and have white corrosion spots. Many are twisted, but have at least some engagement.
> 510	Wearing Surfaces	Light layer of sand and small gravel on the wearing surface. Planks show slight wear.
111	Timber Open Girder/Beam	Soil is spilling onto the ends of the exterior girders. G1 NE: US Lateral restrainer bracket has a small amount of surface rust.
216	Timber Abutment	NE OS end of cap buried under gravel Backwall rotated away from deck Rotation measurements for NE OS: - 2021: 2.5 inches H over 21.5 inches V - 2019: 3 inches H over 33.5 inches V Rotation measurements for FE US: - 2021: 2.875 inches H over 2175 inches V - 2019: 2.375 inches H over 30 inches FE OS: Geotextile exposed from center line to OS.
332	Timber Bridge Railing	Top of posts split. OS 2nd rail post from NE top is splitting/crushing at bolt.
600	Signs Smart Flag	There are no name plate signs. NE US object marker no longer attached to bridge, leaning against rail. FE US object marker loose, is only attached by one bolt. Narrow Bridge signs on NE and FE have been tampered with, now say "Yarrow Bridge"
602	Approach Rail Smart Flag	NE OS and FE US do not have approach rails. NE US approach rail slipped backward. NE US and FE OS approach rails don't have true transitions. The approach rail ends and the bridge rail starts immediately adjacent to each other. Ends of approach rails buried in pile of soil.
609	Utility Smart Flag	OS brackets too small.

Br No 2321 HARRY HALL CREEK BRIDGE

Date: 09/01/2021

INSPECTOR: Hannah Bailey

ASSISTANT: Leslie Daugherty

Weather
SunnyTemperature
55 F**HYDRAULICS REPORT**

Inspection To Mudline At All Piers and Abuts?

Yes

Apparent HW

No

AHW Comments

Stream
Bottom
Material

Bank Erosion

Silt

Erosion Comments

DS has minor undercutting in banks. NE
OS some trees fallen into river but
unclear if this was hydraulically caused.Cobble

Activities

None.

Drift Comments

Sand

Drift

NoneRiprap Condition Appears adequateOther Hydraulic
Comments**SOUNDINGS**

Measured At Surface

Top Rail

Location Upstream**Soundings
Report**All measurements in feet09/01/2021 2321

Horiz Dist from NE	Substr Unit Nb.	Vert Dist to Water Surface	Vert Dist to Stream Bottom	Remarks
0.00		0.0	5.0	Begin Bridge
5.90		0.0	6.9	
13.10		0.0	8.5	
23.50		0.0	12.1	EQW
31.10		0.0	14.0	
39.90		0.0	12.0	EQW
44.80		0.0	8.6	
50.10		0.0	7.9	
54.90		0.0	6.5	
60.50		0.0	5.1	End Bridge

Bridge Key: 2321	Agency ID: 2321	On/Off System: Off System	SR: 85.0	SDIFOND: ND
------------------	-----------------	---------------------------	----------	-------------

IDENTIFICATION			
State 1:	02 Alaska	Struc Number 8:	2321
Facility Carried 7:	GOOD RIVER ROAD	Location 9:	1.0 MILE POINT 0.2
Rte. (On/Under) SA:	Route On Structure	Rte Sign Prefix 58:	5 City Street
Level of Service 5C:	0	Rte. Number 50:	00000
Directional Suffix SE:	0 N/A	% Responsibility:	
SHD District 2:	03 Southcoast	County Code 3:	Hoonah-Angoon Census
Place Code 4:	Gustavus	Ne Post 11:	0.200mi
Feature Intersected 6:	HARRY HALL CREEK BRIDGE		
Latitude 16:	58d 24' 45.7"	Longitude 17:	135d 45' 32.0"
Border Bridge Code 98:	Unknown (P)		
Border Bridge No. 99:	NA		

STRUCTURE TYPE AND MATERIALS			
Number of Approach Spans 46:	0	Number of Spans Main Unit 45:	1
Main Span Mat 1 and Type 43A/B:	7 Wood or Timber	2 Stringer/Girder	
Approach Span Mat 2 and Type 44A/B:	N/A	NA	
Deck Type 107:	8 Wood or Timber		
Wearing Surface 108A:	7 Wood or Timber		
Membrane 108B:	0 None		
Deck Protection 108C:	0 None		

AGE AND SERVICE			
Year Built 27:	2015	Year Reconstructed 106:	
Type of Service on 42A:	1 Highway		
Type of Service under 42B:	5 Waterway		
Lanes on 26A:	2	Lanes under 28B:	0
AOT 29:	10	Truck ADT 109:	1%
		Year of ADT 30:	2018

GEOMETRIC DATA			
Length Max Span 48:	56.00 ft	Structure Length 49:	60.00 ft
Curb/Sidewalk Width 50A:	0.0 ft	Curb/Sidewalk Width 50B:	0.0 ft
Width Curb to Curb 51:	18.0 ft	Deck Width Out to Out 52:	20.4 ft
Approach Roadway Width 32:	18.00 ft	Median 33:	0 Nonmedian
(w/ shoulders)			
Deck Area:	1,224.0 sq ft		
Skew 34:	60	Structure Flared 35:	0 No flare
Route Minimum Vertical Clearance 10:	99.99 ft	Route Horizontal Clearance 47:	14.10 ft
Minimum Vertical Clearance Over Bridge 53:	100.0 ft		
Minimum Vertical Underclearance 54A:	N Feature not hwy or RR		
Minimum Vertical Underclearance 54B:	0.0 ft		
Minimum Lateral Underclearance 55A:	N Feature not hwy or RR		
Minimum Lateral Underclearance 55B:	0.0 ft		
Minimum Lateral Underclearance 56:	0.0 ft		

INSPECTION			
Frequency 91:	24 months	Inspection Date 90:	05/17/2021
Next Inspection:	05/17/2023		
FC Freq. 92A:	NA	FC Insp. Date 93A:	NA
Next FC Inspection:	NA		
UW Freq. 92B:	NA	UW Insp. Date 93B:	NA
Next UW Inspection:	NA		
SI Freq. 92C:	NA	SI Date 93C:	NA
Next SI:	NA		

CLASSIFICATION			
Defense Highway 100:	0 Not a STRAHNET hwy	Parallel Structure 101:	0 No bridge exists
Traffic Direction 102:	2 2-way traffic	Temporary Structure 103:	0 No
Highway System 104:	0 Not on NHS	NBIS Length 112:	Long Enough
Ton Facility 20:	3 On free road	Functional Class 26:	09 Rural/Local
Nat. Network 110:	0 Not on truck network	Historical Sign. 37:	5 Not eligible for NRHP
Owner 22:	City or Municipal Highway Agency		
Custodian 21:	City or Municipal Highway Agency		

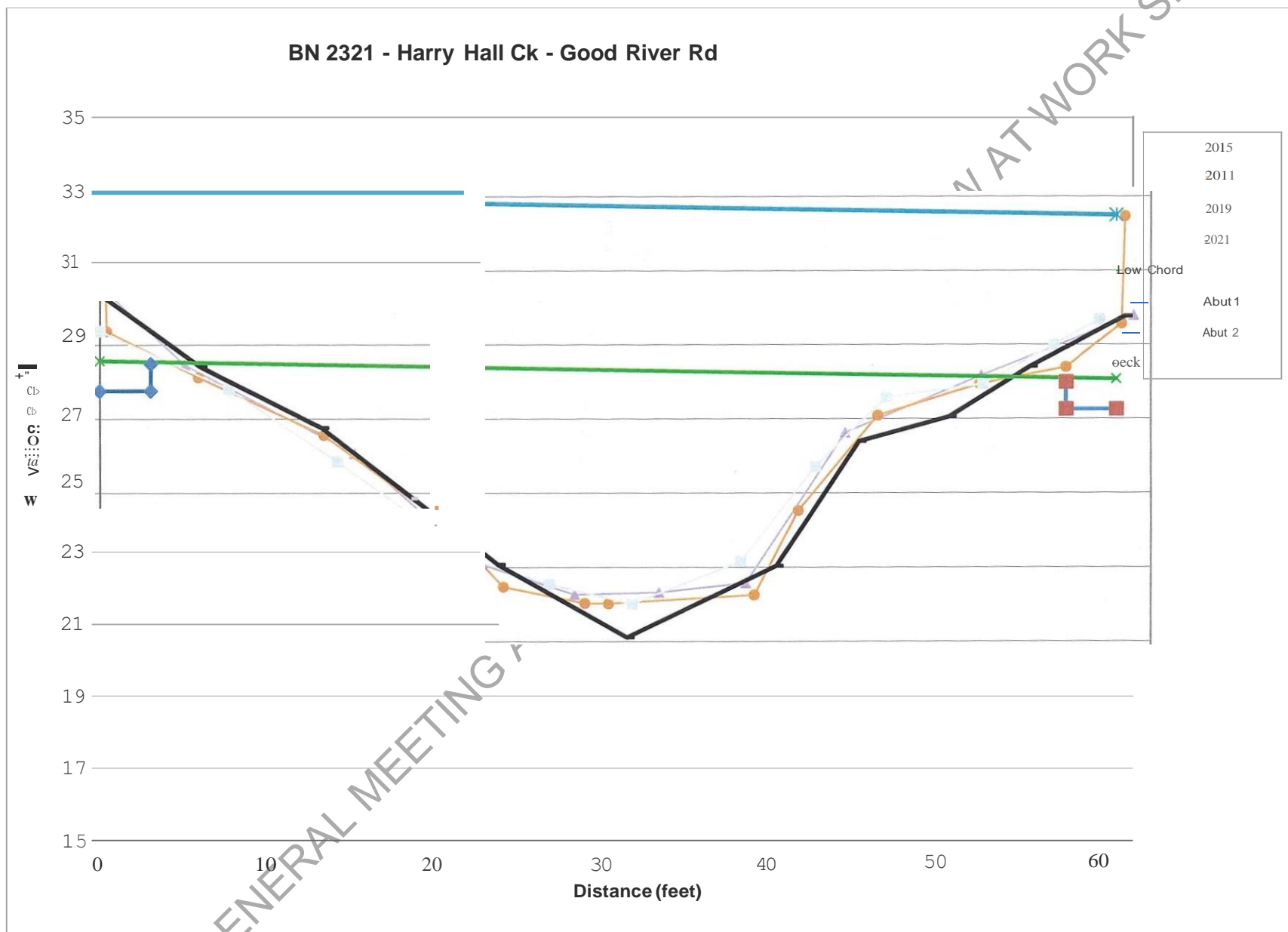
CONDITION			
Deck 58:	8 Very Good	Super 59:	9 Excellent
Sub 60:	8 Very Good		
Channel/Ch. Protection 61:	8 Protected	Culvert 62:	N/A

LOAD RATING AND POSTING			
Operating Rating 64:	HS28	Operating Method 63:	1
Inventory Rating 66:	HS 16	Inventory Method 65:	1
Design Load 31:	5 HS-20	Posting 70:	1 At/Above legal loads
Posting Status 41:	A Open, no restriction		

APPRAISAL			
Bridge Rating 36A:	0 Substandard	Approach Rail 36C:	0 Substandard
Transition 36B:	0 Substandard	Approach Rail Ends 36D:	0 Substandard
Site Evaluation 67:	6 Equal Min Criteria	Deck Geometry 68:	4 Minimum Tolerable
Underclearance, Vertical and Horizontal 69:	N/A		
Waterway Adequacy 71:	8 Equal Desirable	Approach Alignment 72:	8 Equal Desirable Criteria
Scour Critical 113:	7 Countermeasures in place		

PROPOSED IMPROVEMENTS			
Bridge Cost 94:	S Type of Work 75:		Unknown
Roadway Cost 95:	S Length Improvement 76:		0.0 ft
Total Cost 96:	S Future ADT 114:		15
Year of Cost Estimate 97:	Year of Future ADT 115:		2035

NAVIGATION DATA			
Navigation Control 38:	0 Permit Not Required		
Vertical Clearance 39:	0.0 ft	Horizontal Clearance 40:	0.0 ft
Pier Protection 111:	1 Not required	Lift Bridge Vertical Clearance 116:	0.0 ft



DRAFT GENERAL MEETING AGENDA/PACKET FOR REVIEW AT WORK SESSION

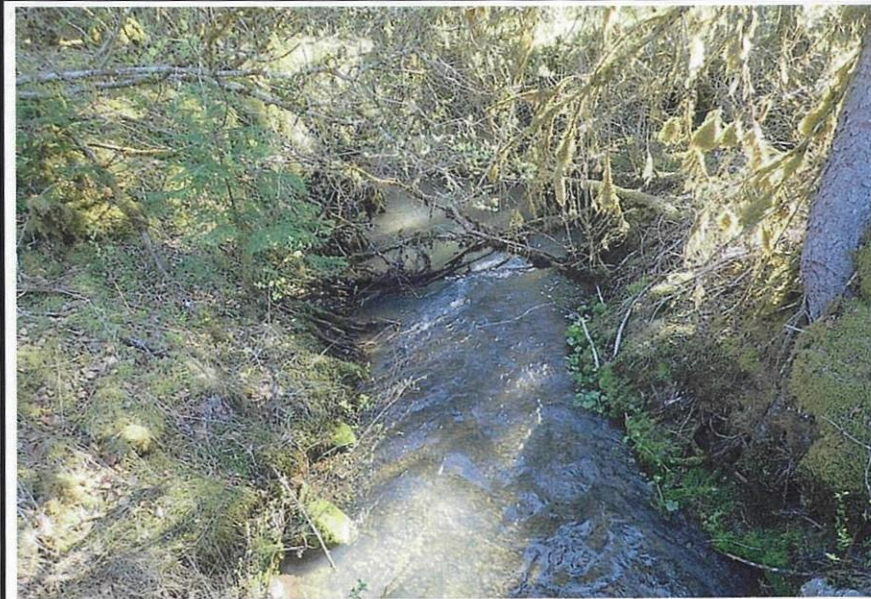
Bridge No.	2321	Br. Name	Harry Hall Creek Bridge	Date	05/18/21	Bridge No.	2321	Br. Name	Harry Hall Creek Bridge	Date	
Looking US				File	P5180976.jpg	Looking DS				File	P5180977.jpg
Inspector		Bailey /Daugherty		Frame	3	Inspector		Bailey /Daugherty		Frame	4



Bridge No. 2321 Br. Name Harry Hall Creek Bridge Date 05/18/21
 Inspector Bailey / Daugherty Frame 1
 Looking Ahead File P5180975.jpg



Bridge No. 2321 Br. Name Harry Hall Creek Bridge Date 05/18/21
 Inspector Bailey / Daugherty Frame 2
 Looking Back File P5180978.jpg



05/18/21

DRAFT



Bridge No. 2321 Br. Name Harry Hall Creek Bridge Date 05/18/21
 Inspector Bailey / Daugherty Frame 5
 NE US Bank File P5180979.jpg



Bridge No. 2321 Br. Name Harry Hall Creek Bridge Date 05/18/21
 Inspector Bailey / Daugherty Frame 6
 NE DS Bank File P5180980.jpg



Bridge No. 2321 Br. Name Harry Hall Creek Bridge Date 05/18/21
 Inspector Bailey / Daugherty Frame 7
 FE DS Bank File PS180982.jpg



Bridge No. 2321 Br. Name Harry Hall Creek Bridge Date 05/18/21
 Inspector Bailey / Daugherty Frame 8
 FE US Bank File PS180981.jpg

DRAFT



Bridge No. 2321 Br. Name Harry Hall Creek Bridge Date 05/18/21
 Inspector Bailey / Daugherty Frame 9
 NE Narrow Bridge Sign File P5180985.jpg



Bridge No. 2321 Br. Name Harry Hall Creek Bridge Date 05/18/21
 Inspector Bailey / Daugherty Frame 10
 NE Narrow Bridge Sign File P5191003.jpg



Bridge No. 2321 Br. Name Harry Hall Creek Bridge Date 05/18/21
 Inspector Bailey / Daugherty Frame 11
 NE US Bridge Rail Transition File P5180988.jpg



Bridge No. 2321 Br. Name Harry Hall Creek Bridge Date 05/18/21
 Inspector Bailey / I Frame 12
 Buried NE US End Treatment File P5180987.jpg



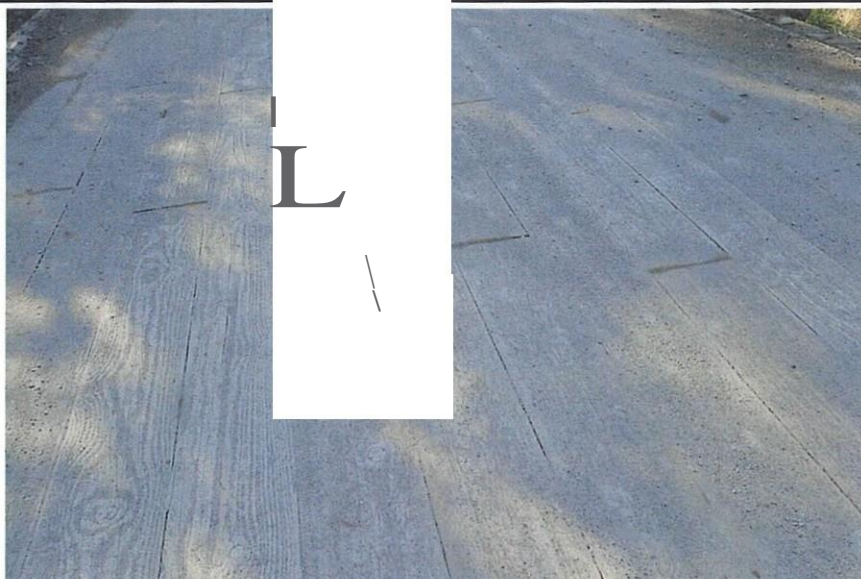
Bridge No. 2321 Br. Name Harry Hall Creek Bridge Date 05/18/21
 Inspector Bailey / Daugherty Frame 13
 US Elevation File

P5180996.jpg



Bridge No. 2321 Br. Name Harry Hall Creek Bridge Date 05/18/21
 Inspector Bailey / Daugherty Frame 14
 DS Elevation and Utility File P5180994."

jpg



Bridge No. 2321 Br. Name Harry Hall Creek Bridge Date 05/18/21
 Inspector Bailey / Daugherty Frame 15
 Typ. Deck File P5180983.jpg



Bridge No. 2321 Br. Name Harry Hall Creek Bridge Date 05/18/21
 Inspector Bailey / Daugherty Frame 16
 Deck Thickness File P5180998.jpg

1% ITJ

DRAFT

O



Bridge No. 2321 Br. Name Harry Hall Creek Bridge Date 05/18/21
 Inspector Bailey /Daugherty Frame 17
 Typ. Rail File

P5180984.jpg



Bridge No. 2321 Br. Name Harry Hall Creek Bridge Date 05/18/21
 Inspector Bailey / Daugherty Frame 18
 NE Abutment File PS181000."

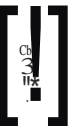


Bridge No. 2321 Br. Name Harry Hall Creek Bridge Date 05/18/21
 NE Abutment Inspector Bailey /Daugherty Frame 19
 File P5180989.jpg



Bridge No. 2321 Br. Name Harry Hall Creek Bridge Date 05/18/21
 Inspector Bailey /Daugherty Frame 20
 Typ. Unders ide File P580992j pg

DRAFT





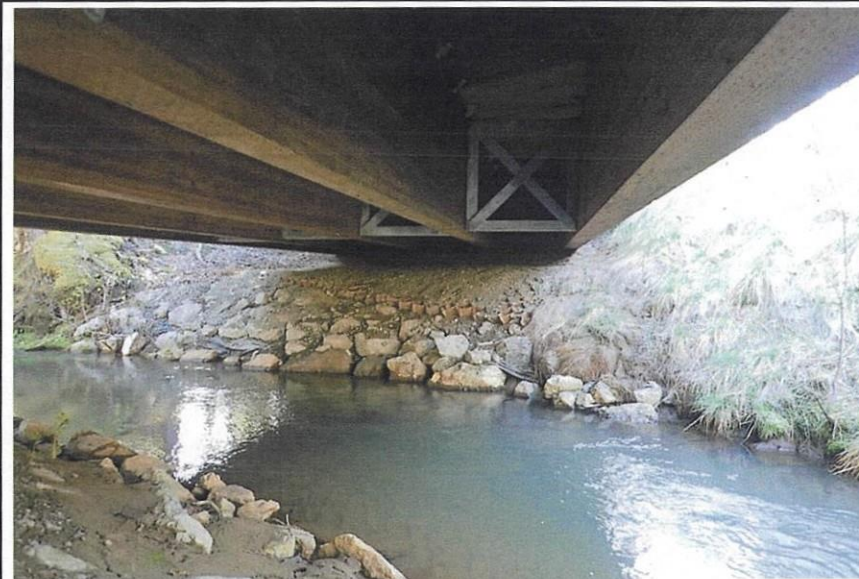
Bridge No. 2321 Br. Name Harry Hall Creek Bridge Date 05/18/21
 Inspector Bailey / Daugherty Frame 21
 NE US Backwall File P5180999.jpg



Bridge No. 2321 Br. Name Harry Hall Creek Bridge Date 05/18/21
 Inspector Bailey / Daugherty Frame 22
 NE DS Backwall Rotation File P5180997.jpg



Bridge No. 2321 Br. Name Harry Hall Creek Bridge Date 05/18/21
 Inspector Bailey / Daugherty Frame 23
 FE Abutment File P5180990.jpg



Bridge No. 2321 Br. Name Harry Hall Creek Bridge Date 05/18/21
 Inspector Bailey / Daugherty Frame 24
 FE Abutment File P5181001.jpg

DRAFT

m

DRAFT GENERAL MEETING AGENDA/PACKET FOR REVIEW AT WORK SESSION

O

Typ. Stream Material

Bridge No. 2321 Br. Name

File

I
n
s

pector

Bailey /Daugherty

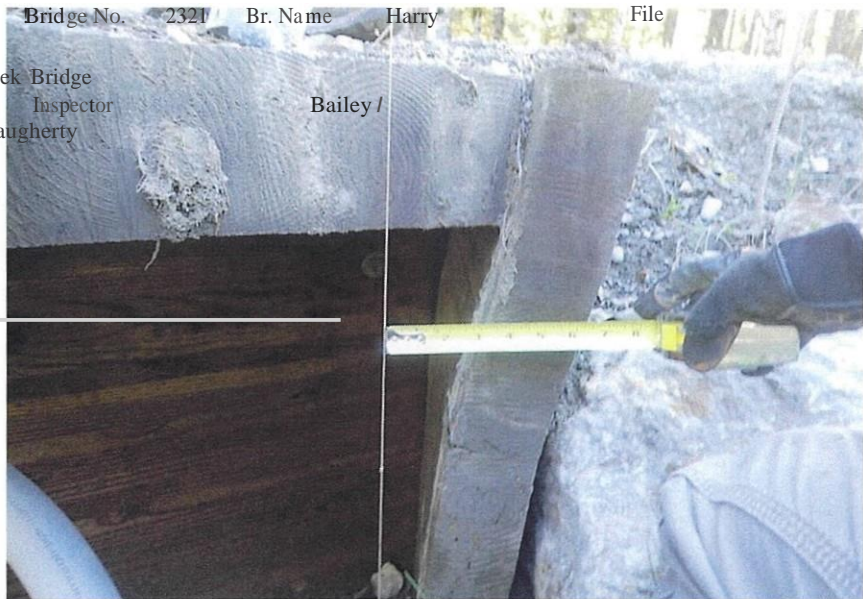
D ate

Frame

P5180991.jpg Stream along NE US Roadway

[!]

Hall Creek Bridge
27 Inspector Bailey /
Daugherty



Bridge No.	2321	Br. Name	Harry Hall Creek Bridge	Date	05/18/21
Inspector	Bailey / Daugherty			Frame	25
FE US Backwall Rotation				File	P5181002.jpg



Harry Hall Creek Bridge

28

P5180986.jpg



Bridge No.	2321	Br. Name	Harry Hall Creek Bridge	Date	05/18/21
Inspector	Bailey / Daugherty			Frame	26
FE DS Backwall and Debris				File	P5180993.jpg



Date **05/18/21**

**CITY OF GUSTAVUS, ALASKA
ORDINANCE FY22-xxNCO**

**AN ORDINANCE FOR THE CITY OF GUSTAVUS PROVIDING FOR THE AMENDMENT OF
THE CITY HELD ACCOUNTS IN FISCAL YEAR 2022**

BE IT ENACTED BY THE GUSTAVUS CITY COUNCIL AS FOLLOWS:

Section 1. Classification. This is a **Non-Code Ordinance**

Section 2. For the Fiscal Year of 2022, the following City held account balance transfers are to be made for the reasons stated.

Section 3. For the current fiscal year, the budget and City held accounts are amended to reflect the changes as follows:

CITY HELD ACCOUNTS	Amounts		Change
	Account Balance*	Amended Balance	
	*Approximate, this is a dynamic value		
AMLIP Capital Improv Current	\$ 49,357.88	\$ 5,000.00	<\$ 44,357.88>
\$40,000 of this was for Wilson Road Improvements, which were funded through reallocated capital project funds already in the FNBA Checking account by FY22-06NCO. The remaining \$4,357.57 of the transfer are unused capital project funds that were returned upon project completion or earnings on the account. The \$5000 being retained in this account was transferred as part of the \$15,000 funding for the library bike shelter/shed (\$10,000 transferred to checking by FY20-04NCO; \$5,000 remains in this account for this project from FY19-19NCO).			
AMLIP Capital Improv Long-Term	\$ 363,799.01	\$ 408,156.89	\$ 44,357.88

CP21-05 DRC Main Building Replacement Phase 1: Design	\$ 0.00	\$ 30,000.00	\$ 30,000.00
Per the Capital Improvement Plan approved by the City Council 4/12/21. Project scoping approved 2/10/20.			
CP21-06 Gustavus Fish Waste Disposal Station	\$ 0.00	\$ 5,000.00	\$ 5,000.00
AMLIP Capital Improv Long-Term	\$ 408,156.89	\$ 373,156.89	<\$ 35,000.00>
=====			
Total Change in City Held Account Balances			\$ 0.00

Section 4. The City held accounts are hereby amended as indicated.

Section 5. Effective Date. This ordinance becomes effective upon its adoption by the Gustavus City Council.

DATE INTRODUCED: September 20, 2021

DATE OF PUBLIC HEARING: October 11, 2021

PASSED and **APPROVED** by the Gustavus City Council this ____ day of _____, 2021.

_____, Mayor

Attest: Eduarda Loggins, City Treasurer

Attest: Karen Platt CMC, City Clerk

**CITY OF GUSTAVUS, ALASKA
ORDINANCE FY22-xxNCO
AN ORDINANCE FOR THE CITY OF GUSTAVUS PROVIDING FOR THE AMENDMENT OF
DEPARTMENT BUDGETS FOR FISCAL YEAR 2022**

BE IT ENACTED BY THE GUSTAVUS CITY COUNCIL AS FOLLOWS:

Section 1. Classification. This is a **Non-Code Ordinance**

Section 2. For the Fiscal Year of 2022 estimated expenditures have changed from the estimates in the approved budget.

Section 3. For the current fiscal year, the budget is amended to reflect the changed estimates as follows:

Budget Category	Amounts		
EXPENSE	Original Budget	Amended Budget	Change
GVFD: Building: Maint & Repair	\$ 3,000.00	\$ 5,000.00	\$ 2,000.00
Admin: Election Expense	\$ 250.00	\$ 350.00	\$ 100.00
<i>For rental of the Gustavus Community Center for the City Council candidate forum in a space large enough for social distancing.</i>			
GVFD: Payroll Expenses: Health Insurance	\$ 7,752.00	\$ 3,900.00	<\$ 3,852.00>
<i>With staffing changes, health insurance expense will be lower for GVFD and training expense will be higher.</i>			
GVFD: Training	\$ 3,000.00	\$ 8,000.00	\$ 5,000.00
Total Change in Expense			\$ 3,248.00

Section 4. The budget is hereby amended as indicated and any portion of the approved budget inconsistent with this amendment is repealed.

Section 5. Effective Date. This ordinance becomes effective upon its adoption by the Gustavus City Council.

DATE INTRODUCED: September 20, 2021

DATE OF PUBLIC HEARING: October 11, 2021

PASSED and **APPROVED** by the Gustavus City Council this ____ day of _____, 2021.

_____, Mayor

Attest: Eduarda Loggins, City Treasurer

Attest: Karen Platt CMC, City Clerk

**CITY OF GUSTAVUS, ALASKA
ORDINANCE FY22-04NCO**

**AN ORDINANCE FOR THE CITY OF GUSTAVUS PROVIDING FOR THE AMENDMENT OF
THE CITY HELD ACCOUNTS IN FISCAL YEAR 2022**

BE IT ENACTED BY THE GUSTAVUS CITY COUNCIL AS FOLLOWS:

Section 1. Classification. This is a **Non-Code Ordinance**

Section 2. For the Fiscal Year of 2022, the following City held account balance transfers are to be made for the reasons stated.

Section 3. For the current fiscal year, the budget and City held accounts are amended to reflect the changes as follows:

CITY HELD ACCOUNTS	Amounts		Amended Balance	Change		
	Account Balance*					
	*Approximate, this is a dynamic value.					
AMLIP Gravel Pit Fund	\$	6,000.00	\$	12,000.00	\$	6,000.00
Contribution to this AMLIP account per the FY22 approved budget.						
FNBA Checking Account	\$	690,019.10	\$	684,019.10	<\$	6,000.00>
Total Change in City Held Account Balances					\$	0.00

Section 4. The City held accounts are hereby amended as indicated.

Section 5. Effective Date. This ordinance becomes effective upon its adoption by the Gustavus City Council.

DATE INTRODUCED: August 9, 2021

DATE OF PUBLIC HEARING: September 20, 2021

PASSED and **APPROVED** by the Gustavus City Council this th day of _____, 2021.

Brittney Cannamore, Mayor

Attest: _____, City Treasurer

Attest: Karen Platt CMC, City Clerk

**CITY OF GUSTAVUS, ALASKA
ORDINANCE FY22-05NCO
AN ORDINANCE FOR THE CITY OF GUSTAVUS PROVIDING FOR THE AMENDMENT OF
DEPARTMENT BUDGETS FOR FISCAL YEAR 2022**

BE IT ENACTED BY THE GUSTAVUS CITY COUNCIL AS FOLLOWS:

Section 1. Classification. This is a **Non-Code Ordinance**

Section 2. For the Fiscal Year of 2022 estimated expenditures have changed from the estimates in the approved budget.

Section 3. For the current fiscal year, the budget is amended to reflect the changed estimates as follows:

Budget Category	Amounts		
	Original Budget	Amended Budget	Change
INCOME			
Federal Revenue: American Rescue Plan	\$ 99,000.00	\$ 107,902.33	\$ 8,902.33
Federal Revenue: Payment in Lieu of Taxes	\$ 113,000.00	\$ 121,077.95	\$ 8,077.95
State Revenue: Community Assist. Program	\$ 77,598.84	\$ 77,370.21	<\$ 228.63 >
Total Change in Income			\$ 16,751.65

EXPENSE	Original Budget	Amended Budget	Change
Building Insurance	\$ 11,710.00	\$ 11,044.48	<\$ 665.52 >
DRC: Equipment Insurance	\$ 265.00	\$ 237.99	<\$ 27.01 >
General Liability	\$ 12,730.00	\$ 15,237.94	\$ 2,507.94
General Liability: Cyber Liability	\$ 0.00	\$ 2,242.67	\$ 2,242.67
<i>Prior to this fiscal year, this was lumped in with the General Liability premium.</i>			
Marine Facilities: Insurance	\$ 2,368.37	\$ 2,486.20	\$ 117.83
Marine Facilities: Training	\$ 0.00	\$ 525.00	\$ 525.00
<i>Emergency Trauma Technician (ETT) training for the Marine Facilities Coordinator.</i>			
Equipment Purchase	\$ 0.00	\$ 8,148.00	\$ 8,148.00
<i>Flux meters purchased for use by the Gustavus PFAS Action Coalition, per their request.</i>			
Total Change in Expense			\$ 12,848.91

Section 4. The budget is hereby amended as indicated and any portion of the approved budget inconsistent with this amendment is repealed.

Section 5. Effective Date. This ordinance becomes effective upon its adoption by the

Gustavus City Council.

DATE INTRODUCED: *August 9, 2021*

DATE OF PUBLIC HEARING: *September 20, 2021*

PASSED and **APPROVED** by the Gustavus City Council this ____ day of _____, 2021.

Brittney Cannamore, Mayor

Attest: _____, City Treasurer

Attest: Karen Platt CMC, City Clerk

DRAFT GENERAL MEETING AGENDA/PACKET FOR REVIEW AT WORK SESSION

**CITY OF GUSTAVUS, ALASKA
ORDINANCE FY22-06NCO**

**AN ORDINANCE FOR THE CITY OF GUSTAVUS PROVIDING FOR THE AMENDMENT OF
THE CITY HELD ACCOUNTS IN FISCAL YEAR 2022**

BE IT ENACTED BY THE GUSTAVUS CITY COUNCIL AS FOLLOWS:

Section 1. Classification. This is a **Non-Code Ordinance**

Section 2. For the Fiscal Year of 2022, the following City held account balance transfers are to be made for the reasons stated.

Section 3. For the current fiscal year, the budget and City held accounts are amended to reflect the changes as follows:

CITY HELD ACCOUNTS	Amounts		Amended Balance	Change
	Account Balance*			
	*Approximate, this is a dynamic value			
CP-18-02 Wilson Road Drainage Imp.	\$ 0.00	\$ 40,000.00	\$ 40,000.00	
CP-19-08 Library Roof Repair/Shed/Awning	\$ 65,715.00	\$ 10,000.00	<\$ 55,715.00>	
\$10,000 of this capital project account was transferred 8/ 14/ 19 for the bike shed project and will remain in the account. The library roof repair is complete, so unused funds are being returned.				
AMLIP Capital Improv Long-Term	\$ 400,907.84	\$ 416,622.84	\$ 15,715.00	
Total Change in City Held Account Balances			\$ 0.00	

Section 4. The City held accounts are hereby amended as indicated.

Section 5. Effective Date. This ordinance becomes effective upon its adoption by the Gustavus City Council.

DATE INTRODUCED: August 9, 2021

DATE OF PUBLIC HEARING: September 20, 2021

PASSED and **APPROVED** by the Gustavus City Council this ____th day of _____, 2021.

Brittney Cannamore, Mayor

Attest: _____, City Treasurer

Attest: Karen Platt CMC, City Clerk



City of Gustavus Capital Improvement Plan

Project Nomination Short Form

Item #13.

Project eligibility

- Does the proposed project represent a major, nonrecurring expense? YES ☒ NO ☐
- Will the proposed project result in a fixed asset (e.g., land, major equipment, building or other structure, road or trail) with an anticipated life of at least two years? YES ☒ NO ☐
- Will the project provide broad community benefit? YES ☒ NO ☐

If you were able to answer YES to all three questions, please provide the following additional information:

1. Project title (Suggested heading in CIP): Gustavus Fish Waste Disposal Station (GFWDS).

2. Project description and benefit. Describe the project in half a page or less, including specific features, stages of construction, etc. Explain how the project will benefit the Gustavus community.

The GFWDS will be a bearproof container bolted to a concrete pad in the Salmon River Boat Harbor. In addition to the Fish Waste container itself we will be using the BearSaver trashcans (currently located at City Hall) to provide a place for non-compostable waste. Originally, we decided that the GFWDS would be set up along the right side (as you enter the launch area) before the informational kiosk. An alternative and perhaps better location would be on the opposite side along the slough that separates the Boat Harbor.

The benefits include giving anglers an alternative to dumping their fish carcasses in the Boat Harbor or off the Dock, lessening the bear attractants currently in the Boat Harbor and Sea Lion attractants being dumped off the Dock, while improving the quality of the DRC's compost program.

3. Plans and progress. Describe in one or two paragraphs what has been accomplished so far (if anything). This may include feasibility study, conceptual design, final design/engineering/permitting, fundraising activity, and total funds raised to date.

To date we have been in contact with other SE Alaskan communities to find out what they have implemented to overcome the problem of unintentional feeding of animals. No two communities seemed to have enacted the same procedures or precautions. Some have invested in commercial Bearproof bins, while others have had custom bins made to serve their unique situations. Commercial Bear Bins are available in all shapes and sizes. We are currently looking for a bin that is both top loading (for anglers) and opens in the front (our only way of moving the fish waste out is with the Bobcat.)

We have spoken with Glacier Bay Construction about pouring the pad (which the City staff will build the frame for.) We have spoken to a Local Business about building a custom box (if that's the route we choose to take.) and have gotten cost estimates for prefabricated Bear Bins. We already own the additional trashcans we would like to use, and they currently have no other purpose. We have found a commercial bin that meets our requirements.

4. Project cost:

A. TOTAL COST (including funds already secured) = NTE \$5000

B. For construction projects, break out preconstruction costs (feasibility/design/permitting):

Preconstruction costs = \$_____

Construction costs = \$1000

Item #13.

5. Timeline: Indicate when you hope to complete each phase of the project.

Please keep in mind that the CIP will not be published until the end of September. Legislative funding (if any) would not be available until July of next year (or later) for state funding and October of next year (or later) for federal funding.

A. For projects that consist of land or equipment purchase only, state when the purchase would be made: N/a

For construction projects:

B. Preconstruction phase to be completed by December 31st, 2021.

C. Construction phase to be completed by May 15th, 2022.

6. Provide a quality digitized photo, drawing, map, or other graphic image of your project if possible.

Included is a picture of the Bearsaver RCE230F (commercial container).

7. Date and name of person submitting form.

Ben Sadler 08/25/2021

SPECIFICATIONS

- Product Name BearSaver Bearier™ Residential Double Trash Can Enclosure - RCE230F
- Manufacturer Name Bearsaver
- Item # RCE230F
- Weight 226 lbs
- Assembled Width 34 in
- Assembled Height 43 in
- Assembled Length 28 in
- Shipped From Ontario, California 91761
- Warranty 1 year

DRAFT GENERAL MEETING AGENDA/PACKET FOR REVIEW AT WORK SESSION



DRAFT GENERAL MEETING A

WORK SESSION