



**Work Session Meeting Agenda
2 Park Drive South, Great Falls, MT
Gibson Room, Civic Center
June 18, 2019
5:30 PM**

CALL TO ORDER

PUBLIC COMMENT

(Public comment on any matter and that is within the jurisdiction of the City Commission. Please keep your remarks to a maximum of five (5) minutes. Speak into the microphone, and state your name and address for the record.)

WORK SESSION ITEMS

1. Neighborhood Council Update - Council #9.
2. City Parks and Boulevard Tree Report- Todd Seymanski.
3. Civic Center Facade Report - Craig Raymond and Tony Houtz.

DISCUSSION POTENTIAL UPCOMING WORK SESSION TOPICS

ADJOURNMENT

City Commission Work Sessions are televised on cable channel 190. If a recording is made, the work session video will be posted on the City's website at <https://greatfallsmt.net/meetings>. Work Session meetings are re-aired on cable channel 190 the following Thursday morning at 10 a.m. and the following Tuesday evening at 5:30 p.m.

UPCOMING MEETING SCHEDULE

Special Budget Work Session -- Thursday June 27, 2019 10:00 a.m.

Work Session -- Tuesday July 2, 2019 5:00 p.m.

Commission Meeting -- Tuesday July 2, 2019 7:00 p.m.



Great Falls Civic Center
Exterior Envelope . A Review

 Malisani Inc.
  HT HYDRO-TECH
  MINERALOGY INC
WHERE SCIENCE GETS DOWN TO EARTH
  WJE
ENGINEERS ARCHITECTS MATERIALS SCIENTISTS
Wiss, Janney, Elstner Associates, Inc.



deterioration of the exterior and lack of mechanical attachment

 Malisani Inc.
  HT HYDRO-TECH
  MINERALOGY INC
WHERE SCIENCE GETS DOWN TO EARTH
  WJE
ENGINEERS ARCHITECTS MATERIALS SCIENTISTS
Wiss, Janney, Elstner Associates, Inc.



heavy separation and entry points for air and water



Malisani Inc.



HYDRO-TECH



MINERALOGY INC
WHERE SCIENCE GETS DOWN TO EARTH

WJE

CONSULTING
ARCHITECTS
MATERIALS SCIENTISTS

Wiss, Janney, Elstner Associates, Inc.

WHAT HAS TRANSPIRED



- a. Full photographic and drone capture of the existing facade
- b. Enhanced Testing, including more cores
- c. Engagement of Hydro-Tech to sample and investigate
- d. Exploration of the results of the testing
- e. Engagement of the Masonry Institute
- f. Solution Development



Malisani Inc.



HYDRO-TECH



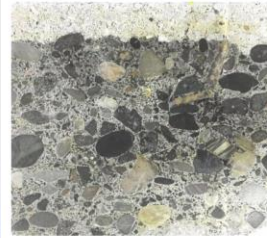
MINERALOGY INC
WHERE SCIENCE GETS DOWN TO EARTH

WJE

CONSULTING
ARCHITECTS
MATERIALS SCIENTISTS

Wiss, Janney, Elstner Associates, Inc.





it's the chlorides



Malisani Inc.



HYDRO-TECH



MINERALOGY INC
WHERE SCIENCE GETS DOWN TO EARTH

WJE

CONSULTING
ARCHITECTS
MATERIALS SCIENTISTS

Wiss, Janney, Elstner Associates, Inc.



A UNIQUE CHALLENGE

- a. A Gravity-Bearing system
- b. Multiple Materials
- c. Phasing and Staging
- d. Current Code and Preservation
- e. How far do we go



Malisani Inc.



HYDRO-TECH



MINERALOGY INC
WHERE SCIENCE GETS DOWN TO EARTH

WJE

CONSULTING
ARCHITECTS
MATERIALS SCIENTISTS

Wiss, Janney, Elstner Associates, Inc.

ASSUMED CONTRACT AWARD DATE: 5/2020
 CONTRACT BID DATE: TBD

REPAIR REMODEL CONSTRUCTION		QTY	YEAR 2020	
			CD STAGE	
Envelope Exterior Cladding Repair		1	\$ 3,979,230.00	\$ 3,979,230.00
Roof Replacement		1	\$ 656,172.00	\$ 656,172.00
Temporary Canopy		1	\$ 97,432.00	\$ 97,432.00
TOTAL (BASE ESTIMATE)				\$ 4,732,834.00
ADD ALTERNATES				
Add Alternate #1: Roof		1	\$ 136,252.00	\$ 136,252.00
Add Alternate #2: Roof		1	\$ 134,028.00	\$ 134,028.00
Add Alternate #3: Roof		1	\$ 8,819.00	\$ 8,819.00
ALTERNATES TOTAL				\$ 279,099.00
Cost Escalation - see below		0	0.0%	\$ -
BASE AND ALTERNATES TOTAL - Construction Costs				\$ 5,011,933.00
Cost Escalation Impacts / Tariff Impacts (7% / 3%)	10%			\$ 501,193.30
Construction Total with Contingency				\$ 5,513,126.30
ADDITIONAL CONSTRUCTION COSTS				
FFE		1.0	LS	
TOTAL ESTIMATE (Construction FFE Costs)				\$ 5,513,126.30



assumptions are included and should be validated

does it go far enough?

